

THE BIRTH OF KIJÉ

Sergei Prokofiev
(1891-1952)

Start *p* (cornet) *rit.*

1 *Doppio movimento* ♩ = 120
Solo
pp

2 *pp*

3 *End* *pp*

4 *p*

5 ♩ = 128-132 *Poco più animato* **6** *(bass drum)*

7 *mf* **8** *Start*

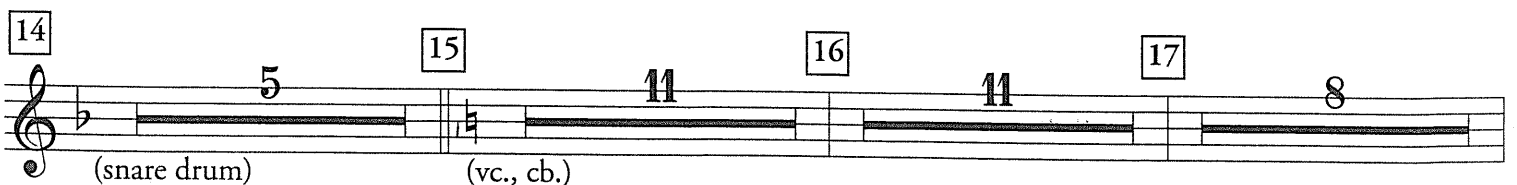
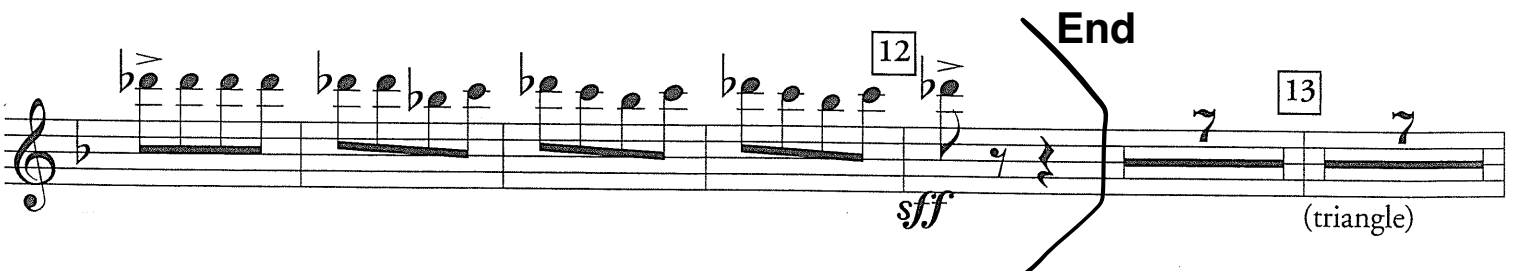
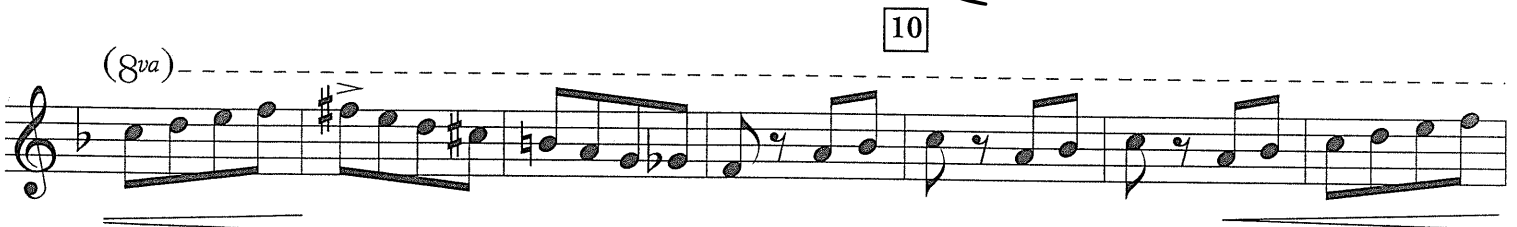
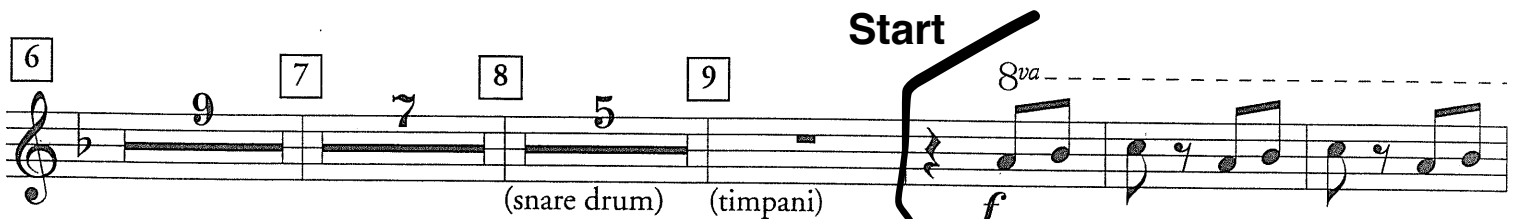
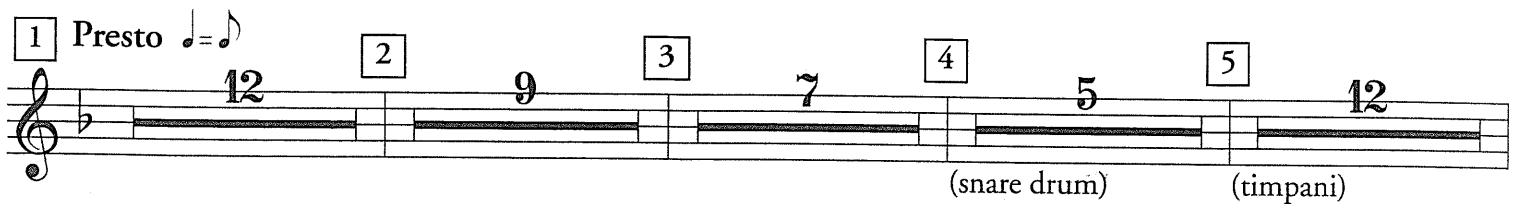
9 *End* *ff*

COLAS BREUGNON OVERTURE

Xilofono

Dimitri Kabalevsky
(1904-1987)

Allegro ♩ = 126-132



The sticking in measure one should be R L R L R L R L R. Use similar stickings throughout to achieve control and uniform phrasing. Count carefully!

Start $\text{♩} = 58-66$
Ab-Bb-Eb

Timpani

15 *ff* *p* *ff* *p* *cresc.* *ff* *End* *p* *ff*