



BASS

LUID 2023

Director's Welcome

Welcome and thank you for your interest in Liberty University's Indoor Drumline! Becoming a member of LUID will be a rewarding challenge. Our website is a great place to look for more information regarding audition materials, audition dates, and locations. Please be proactive and communicate any conflicts with the staff immediately.

LUID is a professional percussion ensemble, in which you will be expected to behave in a professional manner, both on and off the floor. Since we are a Christian university, we will always display a Christ-like attitude to all. Sponsors provide us with high quality instruments, so we need to treat our equipment with the utmost respect and care.

This packet contains our current exercise regime and warm-up package. It is a representation of the techniques and styles that will be reflected in our 2023 presentation. When preparing for auditions, keep your hands/arms relaxed, play rhythms accurately, be confident, keep an open mind for learning new ideas/techniques, practice correctly, and have access to the internet for virtual sessions. Perform each exercise at a variety of tempos with a metronome. AND, have a pencil with you at ALL times!

Membership in LUID is reserved for LU students only. To be considered, please attend one or both audition dates. This will include a staff member's detailed feedback from your performance and consideration for 2023 membership.

Feel free to contact me with any questions you might have. I am looking forward to seeing you soon!



Dr. Thomas Goddard, *Director of Liberty University's Indoor Drumline*

Audition #1 - Sunday, October 23rd, 2-6pm

Audition #2 - Sunday, October 30th, 2-6pm

First Rehearsal - Sunday, November 6th

ELECTRIC BASS - LUID 2023

TWO Mallet Exercises

MY FAVORITE - LUID VERSION

♩ = 100-160+

Musical score for 'MY FAVORITE - LUID VERSION' in bass clef, 2/4 time. The score consists of eight staves of music, each starting with a measure number (1, 8, 15, 22, 27, 34, 40, 47). The music features a variety of rhythmic patterns and key signatures, including major, minor, and chromatic scales. The notation includes eighth and sixteenth notes, rests, and dynamic markings.

ARPEGGIOS

*In all 12 major scales -
ascending chromatically*

♩ = 100-160+

52

Musical score for 'ARPEGGIOS' in bass clef, 3/4 time. The score consists of a single staff of music, starting with a measure number of 52. The music features a variety of rhythmic patterns and key signatures, including major, minor, and chromatic scales. The notation includes eighth and sixteenth notes, rests, and dynamic markings.

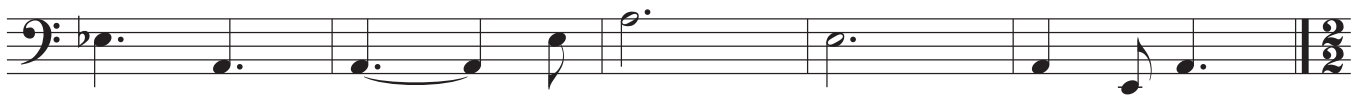
CHROMATIC 16THS

♩ = 100-160+

55



59

**SONATINA**

♩ = 100-110

64



71



78



85



92



98



FOUR MALLET EXERCISES

INDEPENDENT & VERTICALS

♩ = 80-140+

102

107

113

DOUBLE VERTICALS

♩ = 80-140+

119

125

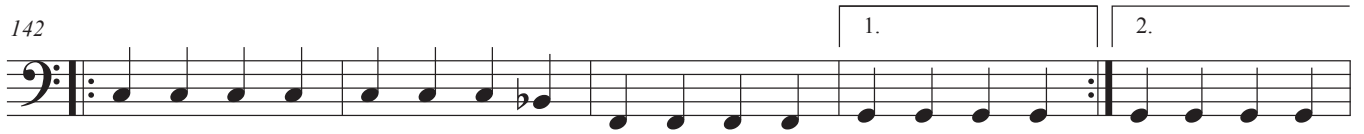
130

SINGLE ALTERNATING

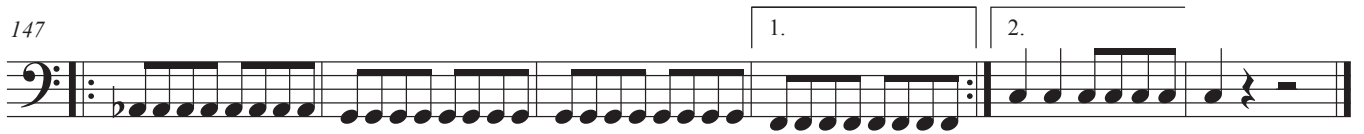
♩ = 80-140+

137

142



147

**DOUBLE LATERALS**

♩ = 115-190

153



158



163



168



174



179



184



189

