

Trumpet Ensemble Audition 2022

Directions:

1. Play excerpts in their entirety from top to bottom in the order listed on this page.
2. No metronome or tuner is allowed to be present on the stand during audition.
3. You may use your own music on the stand, although copies will be provided for you.
4. If recorded, all excerpts must be submitted in one unbroken video, with no editing, splicing, or break between excerpts allowed. You do not have to announce each excerpt before you perform.

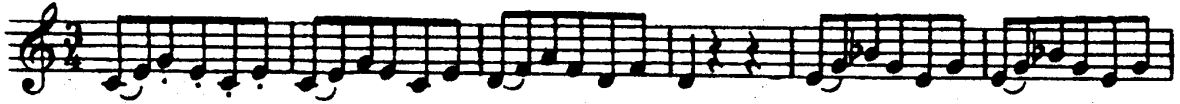
Tips:

- Listen to the orchestral excerpts in context of the performance. There are extra musical things that adjudicators will be listening for that are not marked within the music to convey whether you know the literature as it sounds within the ensemble. A lack of communicating in your playing that you have listened will be reflected in scoring. The orchestral excerpts may all be found on multiple media platforms to hear on the internet.
- Decide on a tempo from recordings and write this at the top of your music so that you know approximately at what speed you will take the excerpt when you begin.
- The most important two elements are rhythm and pitch. Make sure you can accurately perform both as a foundation to performing the excerpt.
- With no tempo indication for the etude, perform it at an Allegro tempo that you can play the most cleanly. Points are not awarded for quickest speed if it is inaccurate.
- Observe all musical markings with dynamics and articulations and learn the excerpt with them.

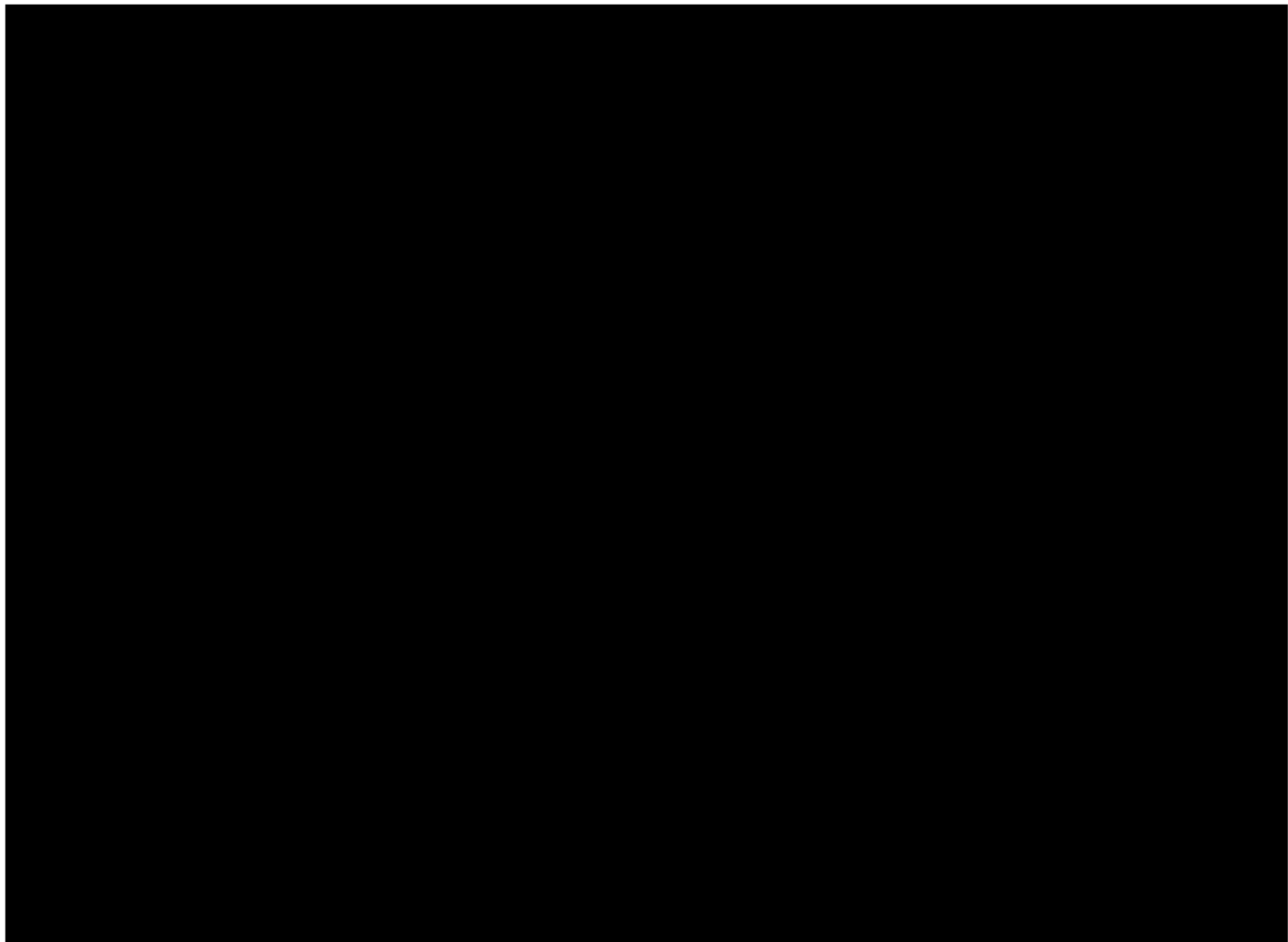
Excerpts: (all excerpts are in Bb trumpet)

- Wurm Etude #32
- D. Shostakovich – Piano Concerto No. 1, mvmt IV: 1 measure after rehearsal 63- rehearsal 65, Trumpet I
- R. Strauss – Ein Heldenleben: rehearsal 80-2 measures before rehearsal 83, Trumpet I

Allegro



mf simile



Trumpet (Bb)

Allegretto poco moderato

Solo
p

61 62 63 64

ad lib.

69 70 71 72

65

80

p

81

dim.

3 *ppp*

6 82 *herrortretend*

f

82

Detailed description: This musical score consists of three staves of music. The first staff, labeled '80', begins with a piano (*p*) dynamic and contains a melodic line with a slur over measures 80 and 81. The second staff, labeled '81', starts with a *dim.* (diminuendo) marking and features a triplet of notes marked *ppp* (pianissimo) at the beginning of measure 81. The third staff, labeled '82', begins with a *f* (forte) dynamic and is marked 'herrortretend' (emerging), with a slur over measures 82 and 83. The key signature has two flats (B-flat and E-flat), and the time signature is 4/4.