

BASS



2022

PACKET

LUID 2022

Director's Welcome

Welcome and thank you for your interest in Liberty University's Indoor Drumline! Becoming a member of LUID will be a rewarding challenge. Our website is a great place to look for more information regarding audition materials, audition dates, and locations. Please be proactive and communicate any conflicts with the staff immediately.

LUID is a professional percussion ensemble, in which you will be expected to behave in a professional manner, both on and off the floor. Since we are a Christian university, we will always display a Christ-like attitude to all. Sponsors provide us with high quality instruments, so we need to treat our equipment with the utmost respect and care.

This packet contains our current exercise regime and warm-up package. It is a representation of the techniques and styles that will be reflected in our 2022 presentation. When preparing for auditions, keep your hands/arms relaxed, play rhythms accurately, be confident, keep an open mind for learning new ideas/techniques, practice correctly, and have access to the internet for virtual sessions. Perform each exercise at a variety of tempos with a metronome. AND, have a pencil with you at ALL times!

Membership in LUID is reserved for LU students only. To be considered, please pay the one-time, non-refundable audition fee. This will include a staff member's detailed feedback from your video submission, virtual clinic/session, and consideration for 2022 membership.

Feel free to contact me with any questions you might have. I am looking forward to seeing you soon!



Tommy Goddard, *Director of Liberty University's Indoor Drumline*

Audition #1 - Sunday, October 24th, 2-6pm

Audition #2 - Sunday, November 7th, 2-6pm

First Rehearsal - Saturday, November 13th

2022 FRONT ENSEMBLE AUDITION PACKET

LIBERTY UNIVERSITY INDOOR DRUMLINE

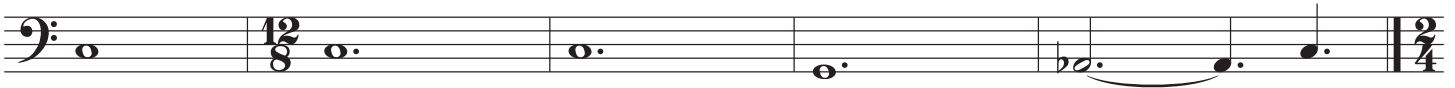
236

♩ = 120-136



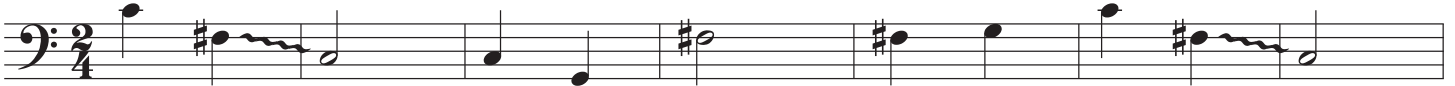
6

♩ = ♩

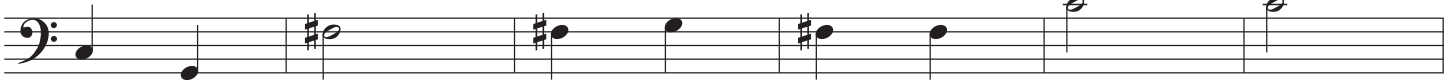


CHROMA TICK

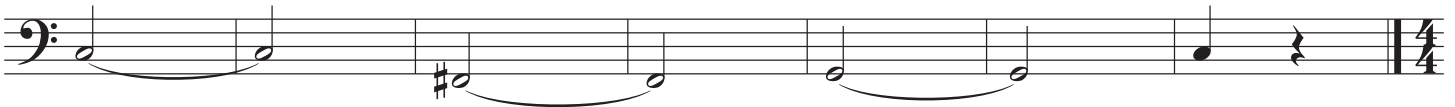
♩ = 85-100
11



18



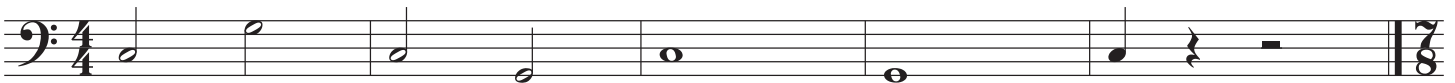
24



CHROMATIC/MAJOR SCALES

♩ = 90-120 ALL MAJOR KEYS

31



SCV 7/8

♩ = 100-130

36



