

**2011-12 Liberty
Women's Basketball
Quick Facts**

General Information

Name of School..... Liberty University
City/Zip Lynchburg, Va. 24502
Founded 1971
Enrollment 12,200
Nickname Lady Flames
School Colors Red, White & Blue
Home Arena..... Vines Center
Capacity..... 8,085
Affiliation NCAA Division I
Conference Big South
Founder Dr. Jerry Falwell
Chancellor Jerry Falwell, Jr.
Director of Athletics..... Jeff Barber
Athletics Dept. Phone..... (434) 582-2100

Women's Basketball Information

Head Coach..... Carey Green
Alma Mater Coastal Carolina, '79
Record at School 286-94 (13th Year)
Career Record..... Same
Assistant Coaches
..... Alexis Sherard (St. Michael's, '93)
..... Heather Stephens (Wyoming, '03)
..... Andy Bloodworth (Calvin, '98)
Certified Athletic Trainer
..... Theresa Hoinsky

History

First Season of Basketball..... 1975-76
All-Time Record 557-422
NCAA Tournament Appearances..... 13
Last NCAA Appearance..... 2010
Opponent..... Kentucky
Result L/77-83 (First Round)
Final/Highest Ranking N/A
Final 2010-11 Record 22-11
Conference Record/Finish..... 14-2/First
Starters Returning/Lost..... 4/1
Letterwinners Returning/Lost..... 9/5
Newcomers..... 5

Athletics Communications Info.

Asst. AD - Communications
..... Todd Wetmore
SID Office Phone..... (434) 582-2292
Email Address..... twetmore@liberty.edu
Assoc. Director..... Ryan Bomberger
Email Address... rbomberger@liberty.edu
Asst. Director Paul Carmany
Cell Phone (434) 221-5575
Email Address..... pjcarmany@liberty.edu
Asst. Director Eric Brown
Email Address..... eqbrown@liberty.edu
Asst. Director Joe Carmany
Email Address..... jacarmany@liberty.edu
Grad. Asst..... Tim Hartin
Email Address..... thartin@liberty.edu
WBB Contact..... Paul Carmany
Ath. Comm. Fax..... (434) 582-2076
Website..... LibertyFlames.com

Media Information

Radio

Station WWMC "The Light" (90.9 FM)
Play-By-Play..... Jamie Hall
Color..... N/A

Television

Station N/A
Play-By-Play..... N/A
Color..... N/A

Video Streaming

UNC Greensboro will offer a free live video stream of Friday's game.

Game No. 1 - November 11, 2011



**Liberty LADY FLAMES
(0-0, 0-0 Big South)**

at



**UNC Greensboro SPARTANS
(0-0, 0-0 SoCon)**

Greensboro, N.C. - Fleming Gymnasium - 7 p.m.

Today's Game

Liberty will tip off its 37th season of women's basketball Friday, when the Lady Flames travel to Greensboro, N.C. to face UNC Greensboro. Tipoff is slated at 7 p.m. inside Fleming Gymnasium. Preseason Big South Conference favorite Liberty will attempt to start its 2011-12 campaign off on the right foot, while the Spartans will be aiming for a win in the collegiate head coaching debut of Wendy Palmer.

The "Starting Five" - Today's Top Storylines

- 1) Liberty will attempt to improve to 6-2 in its last eight season openers. They will also seek their first season-opening victory away from home since a 62-44 triumph at UNC Greensboro on Nov. 13, 2007.
- 2) The Lady Flames will aim to spoil the collegiate head coaching debut of UNC Greensboro's Wendy Palmer.
- 3) Reagan Miller could become the first Liberty freshman to start at point guard in her first collegiate game since Sarah Wilkerson did so on Nov. 23, 1996 against Bluefield.
- 4) Big South Preseason Player of the Year Avery Warley will make her first appearance in a Liberty uniform after playing four contests for Team USA at the Pan American Games in October. It will be Warley's 100th career game as a Lady Flame.
- 5) Liberty will play its fifth straight game in North Carolina, dating back to the end of the 2010-11 season. It will also be the first leg of back-to-back Friday trips to Greensboro, with the Lady Flames scheduled to play at North Carolina A&T on Nov. 18.

Liberty's Probable Starters (Stats from 2010-11 Season)

| No. | Name | Pos. | Ht. | Yr. | PPG | RPG | Stats/Notes |
|-----|---------------|------|------|-------|------|------|--------------------------------------|
| 5 | Reagan Miller | G | 5-7 | Fr. | --- | --- | |
| 40 | Devon Brown | G | 5-10 | R-Jr. | 13.5 | 4.2 | 1st team BSC |
| 12 | Danika Dale | F | 6-1 | Sr. | 2.9 | 2.6 | 3 career starts |
| 22 | Tolu Omotola | F | 6-3 | R-Jr. | 8.5 | 5.9 | 0.8 bpg |
| 23 | Avery Warley | C | 6-3 | R-Sr. | 12.0 | 11.0 | Big South Preseason Player of Yr. |

Reserves

| | | | | | | | |
|----|---------------------|-----|-----|-------|-----|-----|----------------|
| 1 | LaKendra Washington | G | 5-8 | Jr. | 2.6 | 1.1 | 38.9 3FG% |
| 3 | Ellee Rollins | G | 5-7 | Fr. | --- | --- | |
| 21 | Emily Frazier | G | 5-7 | So. | 4.4 | 2.2 | BSC All-Fresh. |
| 24 | Jasmine Gardner | F | 6-2 | So. | 1.3 | 2.7 | 0.2 bpg |
| 30 | Brittany Campbell | G/F | 6-0 | R-Jr. | 1.0 | 1.2 | 0.6 apg |
| 32 | Terika Lunsford | G | 5-9 | R-So. | 0.5 | 0.4 | 11 games |
| 34 | Katelyn Adams | F/C | 6-5 | Fr. | --- | --- | |
| 44 | Catherine Kearney | F/C | 6-5 | Fr. | --- | --- | |
| 55 | Ashley Rininger | F/C | 6-4 | Fr. | --- | --- | |

2011-12 Liberty Women's Basketball Schedule/Results

Overall: 0-0
Big South: 0-0

11/11 at UNC Greensboro 7 p.m.
11/15 VCU^A 7 p.m.
11/18 at North Carolina A&T 7 p.m.
11/22 VIRGINIA-WISE 7 p.m.

Vanderbilt Thanksgiving Tournament (Nashville, Tenn.)

11/25 vs. Oklahoma 5 p.m.
11/26 vs. Lipscomb/Vanderbilt 3/5 p.m.

12/1 JAMES MADISON^A 7 p.m.
12/7 at Virginia 7 p.m.
12/10 GLENVILLE STATE 4 p.m.
12/15 VIRGINIA UNION 7 p.m.
12/20 at Richmond 4 p.m.
12/31 at Radford* 4:30 p.m.

1/7 HIGH POINT^{*A} 7 p.m.
1/9 CAMPBELL^{*A} 7 p.m.
1/14 at Coastal Carolina* 2 p.m.
1/16 at Charleston So.* 7 p.m.
1/21 PRESBYTERIAN CO.^{*A} 2 p.m.
1/23 WINTHROP^{*A} 7 p.m.
1/28 at UNC Asheville* 2 p.m.
1/30 at Gardner-Webb* 7 p.m.

2/4 at Campbell* 1 p.m.
2/6 at High Point* 7 p.m.
2/11 CHARLESTON SO.^{*A} 2 p.m.
2/13 COASTAL CAROLINA^{*A} 7 p.m.
2/18 at Winthrop* 1 p.m.
2/20 at Presbyterian Co.* 7 p.m.
2/25 GARDNER-WEBB^{*A} 7 p.m.
2/27 UNC ASHEVILLE^{*A} 7 p.m.

3/2 RADFORD^A 7 p.m.

Big South WBB Championship (High Point, N.C.)

3/9 Quarterfinals 12/2/5:30/7:30 p.m.
3/10 Semifinals 1:30/3:30 p.m.
3/11 Championship Game 4 p.m.

NCAA Division I WBB Championship

3/17 First Round TBA
3/18 First Round TBA
3/19 Second Round TBA
3/20 Second Round TBA

Home Games in BOLD CAPS

* - Big South Conference Game

All times are Eastern Standard Time

^A - Broadcast on

Flames Sports Network

Team Statistical Leaders (Top Returnees from 2010-11)

Total Points

Avery Warley - 397/12.0 ppg
Devon Brown - 351/13.5 ppg

Total Rebounds

Avery Warley - 363/11.0 rpg
Tolu Omotola - 196/5.9 rpg

Total Assists

Emily Frazier - 85/2.6 apg
Devon Brown - 37/1.4 apg

Total Steals

Tolu Omotola - 36/1.1 spg
Devon Brown - 34/1.3 spg

2011-12 Liberty University Women's Basketball Roster

Numerical Roster

| No. | Name | Year | Pos. | Ht. | Hometown/Previous School |
|-----|---------------------|-------|------|------|---|
| 1 | LaKendra Washington | Jr. | G | 5-8 | Milwaukee, Wis./The Hope School |
| 3 | Ellee Rollins | Fr. | G | 5-7 | Elkton, Md./Caravel Academy |
| 5 | Reagan Miller | Fr. | G | 5-7 | Sanger, Texas/Sanger HS |
| 12 | Danika Dale | Sr. | F | 6-1 | Fort Hood, Texas/Shoemaker HS |
| 21 | Emily Frazier | So. | G | 5-7 | Magnolia, Texas/Home Schooled |
| 22 | Tolu Omotola | R-Jr. | F/C | 6-3 | Houston, Texas/TCU |
| 23 | Avery Warley | R-Sr. | C | 6-3 | Washington, D.C./H.D. Woodson HS |
| 24 | Jasmine Gardner | So. | F | 6-2 | Memphis, Tenn./Mitchell HS |
| 30 | Brittany Campbell | R-Jr. | G/F | 6-0 | Rustburg, Va./Brookville HS |
| 32 | Terika Lunsford | R-So. | G | 5-9 | Suffolk, Va./Albany |
| 34 | Katelyn Adams | Fr. | F/C | 6-5 | Burnsville, Minn./Minnehaha Academy |
| 40 | Devon Brown | R-Jr. | G/F | 5-10 | Waynesboro, Va./Waynesboro HS |
| 44 | Catherine Kearney | Fr. | F/C | 6-5 | Monroeville, N.J./Gloucester Cty. Christ. |
| 55 | Ashley Rininger | Fr. | F/C | 6-4 | Canton, Ohio/GlenOak HS |

Coaching and Support Staff

Head Coach: Carey Green, 13th Year (Coastal Carolina, '79)

Assistant Coach: Alexis Sherard, Fifth Year (St. Michael's, '93)

Assistant Coach: Heather Stephens, Ninth Year (Wyoming, '03)

Assistant Coach: Andrea "Andy" Bloodworth, Fifth Year (Calvin, '98)

Director of Operations: Sarah Boruta, First Year (Ferris State, '08)

Video Coordinator: Sam Choi, Third Year (Liberty, '09)

Certified Athletic Trainer: Theresa Hoinsky, First Year (Liberty, '08)

Pronunciation Guide

Devon Brown..... *Dev-inn Brown*

.....(Rhymes with Kevin)

Danika Dale.....*DON-ick-uh Dale*

.....(Rhymes with harmonica)

Catherine Kearney..... *Catherine Car-knee*

Terika Lunsford..... *Tuh-reek-uh Lunsford*

Reagan Miller.....*Ray-ginn Miller*

.....(Pronounced like the former President)

Tolu Omotola.....*Toe-loo Oh-ma-toe-lah*

Ashley Rininger.....*Ashley RINE-in-grrr*

Ellee Rollins.....*El-lee Rollins*

Avery Warley..... *Avery War-lee*

Head Coach Carey Green's Career Highlights

Record at Liberty: 286-94 (13th Year)

Career Record: Same

Record vs. Big South Conference Opponents: 187-18

10 Big South Tournament Championships: 2000, 2001, 2002, 2003, 2004, 2005, 2006, 2008, 2009, 2010

10 Big South Regular-Season Championships: 2000, 2001, 2002, 2003, 2004, 2005, 2006, 2008, 2009, 2011

10 NCAA Appearances: 2000, 2001, 2002, 2003, 2004, 2005 (Sweet 16), 2006, 2008, 2009, 2010

4 Appearances in the WBCA Academic Top 25: 2000, 2006, 2007, 2008

5-time Big South Coach of the Year: 2000, 2003, 2006, 2008, 2009

3-time VaSID State Coach of the Year: 2003, 2005, 2006

Has Coached 2 WNBA Players: Megan Frazee and Katie (Feenstra) Mattera

Big South Conference Update

Overall Standings

| | W | L | Pct. |
|----------------------|----------|----------|-------------|
| Campbell | 0 | 0 | .000 |
| Charleston Southern | 0 | 0 | .000 |
| Coastal Carolina | 0 | 0 | .000 |
| Gardner-Webb | 0 | 0 | .000 |
| High Point | 0 | 0 | .000 |
| Liberty | 0 | 0 | .000 |
| Presbyterian College | 0 | 0 | .000 |
| Radford | 0 | 0 | .000 |
| UNC Asheville | 0 | 0 | .000 |
| Winthrop | 0 | 0 | .000 |

Conference Standings

| | W | L | Pct. |
|----------------------|----------|----------|-------------|
| Campbell | 0 | 0 | .000 |
| Charleston Southern | 0 | 0 | .000 |
| Coastal Carolina | 0 | 0 | .000 |
| Gardner-Webb | 0 | 0 | .000 |
| High Point | 0 | 0 | .000 |
| Liberty | 0 | 0 | .000 |
| Presbyterian College | 0 | 0 | .000 |
| Radford | 0 | 0 | .000 |
| UNC Asheville | 0 | 0 | .000 |
| Winthrop | 0 | 0 | .000 |

Upcoming Schedule

Friday, Nov. 11

| | |
|-----------------------------------|---------------|
| Presbyterian College at Charlotte | 5 p.m. |
| Southern Va. at Coastal Caro. | 5 p.m. |
| Furman at Charleston So. | 7 p.m. |
| Liberty at UNC Greensboro | 7 p.m. |
| High Point at VCU | 7 p.m. |

Saturday, Nov. 12

| | |
|--------------------------------|--------|
| Gardner-Webb at North Carolina | 1 p.m. |
| Winston-Salem St. at UNCA | 2 p.m. |
| Eastern Mennonite at Radford | 3 p.m. |
| Montreat at Campbell | 6 p.m. |
| So. Wesleyan at Charleston So. | 7 p.m. |

Sunday, Nov. 13

| | |
|------------------|--------|
| Winthrop at Troy | 2 p.m. |
|------------------|--------|

Monday, Nov. 14

| | |
|--------------------------------|--------|
| Charleston So. at W. Carolina | 7 p.m. |
| Coll. of Charleston at Coastal | 7 p.m. |

Tuesday, Nov. 15

| | |
|------------------------------|---------------|
| Kennesaw St. at Gardner-Webb | 7 p.m. |
| VCU at Liberty | 7 p.m. |
| Furman at Presbyterian Coll. | 7 p.m. |

Wednesday, Nov. 16

| | |
|------------------------------|--------|
| Winston-Salem St. at Radford | 7 p.m. |
| UNC Asheville at W. Carolina | 7 p.m. |
| High Point at Virginia | 7 p.m. |

Thursday, Nov. 17

| | |
|-----------------------------|-----------|
| Allen at Presbyterian Coll. | 5:30 p.m. |
| Campbell at N.C. Central | 6 p.m. |

Liberty vs. UNC Greensboro At a Glance

Series History

Series Record: UNC Greensboro leads, 14-6.

Current Streak: Liberty has won two in a row and three of the last four meetings.

Series Record at UNC Greensboro: UNC Greensboro leads, 6-2.

Current Streak: Liberty won the most recent meeting.

Last Meeting: Liberty 60, UNC Greensboro 42 (Nov. 17, 2009 at Liberty)

Last Meeting at UNC Greensboro: Liberty 62, UNC Greensboro 44 (Nov. 13, 2007)

UNC Greensboro's Last Victory: UNC Greensboro 67, Liberty 59 (Dec. 30, 2006)

Coaching Matchup

Liberty Head Coach: Carey Green

Overall Record (Seasons): 286-94 (13th Season)

Record at Liberty (Seasons): Same

Record vs. UNC Greensboro: 2-1

UNC Greensboro Head Coach: Wendy Palmer

Overall Record (Seasons): 0-0 (First Season)

Record at UNC Greensboro (Seasons): Same

Record vs. Liberty: 0-0

Notes and Anecdotes

-- Liberty and UNC Greensboro were Big South Conference rivals for four seasons (1993-94 through 1996-97). The Spartans won eight of 10 matchups against the Lady Flames during that time.

-- Liberty won its first of 13 Big South championships against UNC Greensboro, with an 89-82 victory in the 1997 title contest at the Vines Center on March 1, 1997.

-- This is the second time in the last five seasons that Liberty has opened its season at UNC Greensboro. The Lady Flames posted a 62-44 victory at Fleming Gymnasium on Nov. 13, 2007, tipping off a 28-4 season.

-- Devon Brown excelled in her only previous meeting against UNC Greensboro, a 60-42 Liberty triumph, Nov. 17, 2009 at the Vines Center. In just the second game of her collegiate career, Brown led all players in points (26) and rebounds (9).

-- Friday's game will be Wendy Palmer's first as a collegiate head coach, after she replaced Lynne Agee during the offseason. Agee had served as UNC Greensboro's head coach for the last 30 seasons.

-- Palmer was an assistant coach at Virginia when the Cavaliers defeated the Lady Flames 63-54 in the championship game of the Marriott Cavalier Classic on Dec. 29, 2009. She was also a teammate of Liberty alum Katie (Feenstra) Mattera with the WNBA's San Antonio Silver Stars during Mattera's rookie season in 2005.

Liberty..... Statistical Comparison (2010-11 Stats) UNCG

| | |
|--|-------|
| 22-11.....Record..... | 13-16 |
| 41.3..... Field Goal Percentage..... | 37.5 |
| 34.9..... Opponent Field Goal Percentage..... | 41.6 |
| 28.6..... Three-Point Field Goal Percentage..... | 28.8 |
| 3.2..... Three-Pointers Made Per Game..... | 4.8 |
| 60.5..... Free Throw Percentage..... | 61.8 |
| 43.8..... Rebound Average..... | 37.8 |
| 31.0..... Opponent Rebound Average..... | 40.2 |
| +12.7..... Rebound Differential..... | -2.4 |
| 60.6..... Points Per Game..... | 61.0 |
| 53.9..... Points Allowed Per Game..... | 63.5 |
| +6.8..... Point Differential..... | -2.5 |



**Liberty in the
Big South Stats
(2010-11 Season)**

Team

| | |
|----------------------------------|-----------|
| Scoring Offense (5th) | 60.6 ppg |
| Scoring Defense (1st)..... | 53.9 ppg |
| Scoring Margin (3rd)..... | +6.8 ppg |
| Free Throw Pct. (9th)..... | .605 |
| Field Goal Pct. (1st)..... | .413 |
| Field Goal Pct. Defense (1st) .. | .349 |
| 3-Pt. FG Pct. (7th) | .286 |
| 3-Pt. FG Pct. Defense (2nd).... | .272 |
| 3-Pt. FG Made (9th)..... | 3.2/game |
| Rebounds (1st)..... | 43.8 rpg |
| Opp. Rebounds (1st) | 31.0 rpg |
| Rebounding Margin (1st)..... | +12.7 rpg |
| Offensive Rebounds (1st)..... | 17.2 rpg |
| Defensive Rebounds (1st)..... | 26.6 rpg |
| Blocked Shots (5th) | 3.1 bpg |
| Assists (4th)..... | 12.0 apg |
| Steals (3rd)..... | 9.1 spg |
| Turnover Margin (8th)..... | -2.97 |
| Asst./TO Ratio (5th)..... | 0.6 |

Individual

Scoring

| | |
|--------------------------|----------|
| Devon Brown (6th)..... | 13.5 ppg |
| Avery Warley (12th)..... | 12.0 ppg |
| Jelena Antic (17th)..... | 10.2 ppg |
| Tolu Omotola (25th)..... | 8.5 ppg |

Rebounding

| | |
|--------------------------|----------|
| Avery Warley (1st)..... | 11.0 rpg |
| Jelena Antic (10th)..... | 6.3 rpg |
| Tolu Omotola (12th)..... | 5.9 rpg |

Offensive Rebounds

| | |
|---------------------------|---------|
| Avery Warley (1st)..... | 4.6 rpg |
| Tolu Omotola (11th) | 2.3 rpg |
| Jelena Antic (12th)..... | 2.1 rpg |

Defensive Rebounds

| | |
|--------------------------|---------|
| Avery Warley (2nd)..... | 6.4 rpg |
| Jelena Antic (11th)..... | 4.2 rpg |
| Tolu Omotola (14th)..... | 3.6 rpg |

Field Goal Percentage

| | |
|-------------------------|------|
| Avery Warley (1st)..... | .620 |
| Devon Brown (12th)..... | .384 |

Free Throw Percentage

| | |
|---------------------------|------|
| Devon Brown (9th)..... | .673 |
| Avery Warley (11th) | .630 |

3-Point FG Made

| | |
|-------------------------|----------|
| Devon Brown (10th)..... | 1.3/game |
|-------------------------|----------|

Assists

| | |
|--------------------------|---------|
| Emily Frazier (9th)..... | 2.6 apg |
| Jelena Antic (12th)..... | 2.3 apg |

Blocked Shots

| | |
|--------------------------|---------|
| Avery Warley (7th)..... | 1.2 bpg |
| Tolu Omotola (12th)..... | 0.8 bpg |

Liberty vs. the Southern Conference

Record vs. Current Conference Members: 28-32

Carey Green's Record vs. Current Conference Members: 9-6

Current Streak: Liberty lost the most recent meeting.

Last Meeting: College of Charleston 49, Liberty 46 (Nov. 13, 2010)

Liberty's Last Victory: Liberty 60, UNC Greensboro 42 (Nov. 17, 2009)

Liberty's Record vs. Southern Conference Teams:

| <u>Opponent</u> | <u>Overall Record</u> | <u>Record Under Carey Green</u> |
|-----------------------|-----------------------|---------------------------------|
| Appalachian State | 0-2 | |
| College of Charleston | 2-2 | 0-1 |
| Davidson | 2-0 | |
| Elon | 11-3 | 7-3 |
| Furman | 0-1 | |
| Georgia Southern | 0-2 | |
| Samford | 1-0 | |
| UNC Greensboro | 6-14 | 2-1 |
| Western Carolina | 3-8 | 0-1 |
| Wofford | 3-0 | |
| Total | 28-32 | 9-6 |

Liberty in Season Openers

All-Time Record in Season Openers: 18-18

Record Breakdown: 14-5 (Home), 4-8 (Road), 0-5 (Neutral)

Carey Green's Record in Season Openers: 6-6

Record Breakdown: 5-1 (Home), 1-3 (Road), 0-2 (Neutral)

Current Streak: Liberty lost its season opener in 2010-11.

Last Year's Season Opener: Creighton 40, Liberty 35 (Nov. 12, 2010)

Liberty's Last Victory in a Season Opener: Liberty 71, WSSU 26 (Nov. 13, 2009)

Note: During Carey Green's first 12 seasons as Liberty's head coach, the Lady Flames' only season-opening win away from the Vines Center was a 62-44 decision at UNC Greensboro on Nov. 13, 2007.

Liberty in November

All-Time Record in November: 66-41

Carey Green's Record in November: 31-23

Record This November (Games Remaining): 0-0 (6 games remaining)

Last Five November Records:

2006-07 - 5-1

2007-08 - 6-1

2008-09 - 1-4

2009-10 - 5-0

2010-11 - 3-4

Trekking to the Tar Heel State

-- Liberty will play two of its first three games in North Carolina this season, making back-to-back Friday trips to Greensboro for matchups against UNC Greensboro (Nov. 11) and North Carolina A&T (Nov. 18).

-- Liberty played 10 games in North Carolina last season, including the first two games of the year and the last four games of the season. So, Friday's game will be the Lady Flames' fifth straight contest in North Carolina, dating back to the 2010-11 campaign.

-- The Lady Flames are scheduled to play six regular-season contests in the Tar Heel State in 2011-12 and will return to High Point, N.C. for the 2012 Big South Women's Basketball Championship.

-- Liberty opened the 2007-08 season with consecutive trips to UNC Greensboro (Nov. 13) and North Carolina A&T (Nov. 16), winning both tilts on the way to a 28-4 record.

Miscellaneous Stats For the 2010-11 Lady Flames

Team Scoring Leaders

| | |
|---------------------|----------|
| Avery Warley | 12 times |
| Devon Brown | 11 times |
| Jelena Antic | 7 times |
| Tolu Omotola | 4 times |
| Emily Frazier | 2 times |
| Danika Dale | 1 time |
| Dymond Morgan | 1 time |
| LaKendra Washington | 1 time |

20-Point Games

| | |
|--------------|---------|
| Devon Brown | 2 times |
| Avery Warley | 2 times |
| Jelena Antic | 1 time |

Team Rebounding Leaders

| | |
|-----------------|----------|
| Avery Warley | 23 times |
| Jelena Antic | 5 times |
| Tolu Omotola | 5 times |
| Kylee Beecher | 1 time |
| Jasmine Gardner | 1 time |

10-Rebound Games

| | |
|-----------------|----------|
| Avery Warley | 20 times |
| Jelena Antic | 2 times |
| Tolu Omotola | 2 times |
| Jasmine Gardner | 1 time |

Team Assist Leaders

| | |
|-------------------|----------|
| Jelena Antic | 13 times |
| Emily Frazier | 11 times |
| Dymond Morgan | 6 times |
| Devon Brown | 3 times |
| Danika Dale | 3 times |
| Avery Warley | 3 times |
| Tolu Omotola | 2 times |
| Brittany Campbell | 1 time |
| Rachel McLeod | 1 time |

5-Assist Games

| | |
|-------------------|---------|
| Emily Frazier | 4 times |
| Jelena Antic | 3 times |
| Devon Brown | 1 time |
| Brittany Campbell | 1 time |
| Dymond Morgan | 1 time |
| Avery Warley | 1 time |

Team Steal Leaders

| | |
|-------------------|----------|
| Dymond Morgan | 11 times |
| Jelena Antic | 8 times |
| Devon Brown | 7 times |
| Emily Frazier | 7 times |
| Tolu Omotola | 6 times |
| Avery Warley | 5 times |
| Rachel McLeod | 2 times |
| Kylee Beecher | 1 time |
| Brittany Campbell | 1 time |
| Danika Dale | 1 time |

3-Steal Games

| | |
|---------------------|---------|
| Dymond Morgan | 7 times |
| Emily Frazier | 4 times |
| Tolu Omotola | 4 times |
| Devon Brown | 3 times |
| Rachel McLeod | 3 times |
| Jelena Antic | 2 times |
| Avery Warley | 2 times |
| Danika Dale | 1 time |
| LaKendra Washington | 1 time |

Team Blocked Shot Leaders

| | |
|-------------------|----------|
| Avery Warley | 16 times |
| Tolu Omotola | 11 times |
| Jelena Antic | 4 times |
| Devon Brown | 3 times |
| Kylee Beecher | 2 times |
| Jasmine Gardner | 2 times |
| Brittany Campbell | 1 time |
| Danika Dale | 1 time |
| Emily Frazier | 1 time |

3-Block Games

| | |
|--------------|---------|
| Tolu Omotola | 5 times |
| Avery Warley | 4 times |

Focus on the Freshmen

-- Five Liberty freshmen (Katelyn Adams, Catherine Kearney, Reagan Miller, Ashley Ringer and Ellee Rollins) could make their collegiate debuts on Friday.

-- Reagan Miller is listed as the Lady Flames' probable starter at point guard. If the Sanger, Texas native does start at UNC Greensboro, she would become the first Lady Flame to start at point guard during her first collegiate game since Sarah Wilkerson in 1996-97.

-- Wilkerson posted four points, five rebounds and four steals in an 89-45 home win over Bluefield on Nov. 23, 1996. However, Wilkerson's solid effort was overshadowed by a 30-point outburst by freshman teammate Elena Kisseleva. Kisseleva's mark still stands as the most points ever scored by a Lady Flame in her first game.

First Since Feenstra

-- Freshman forward/center Catherine Kearney has chosen uniform No. 44, making her the first Liberty player to wear that number since Katie Feenstra graduated in 2005. Feenstra is the program's all-time leading rebounder (1,033 rebounds) and one of two Lady Flames to play in the WNBA.

-- Liberty's other WNBA player, Megan Frazee, wore No. 40. That number is currently being sported by redshirt junior guard/forward Devon Brown, a two-time first-team All-Big South honoree.

-- Additionally, sophomore forward Jasmine Gardner is the first Liberty player since Elena Kisseleva to wear No. 24. A 2000 graduate, Kisseleva is Liberty's all-time leading scorer (2,154 points) and a member of both the Liberty and Big South Conference Halls of Fame.

Blowing Out the Candles

Devon Brown will celebrate her 22nd birthday on Saturday (Nov. 12). Meanwhile, Emily Frazier will turn 21 years of age on Sunday (Nov. 13).

Great Expectations

Expectations are high around the Big South Conference for Liberty's 2011-12 campaign. The Lady Flames were a near-unanimous pick to win the conference title, Avery Warley was voted Big South Preseason Player of the Year and Devon Brown joined Warley on the preseason All-Big South roster.

2011-12 Big South Women's Basketball Preseason Poll Team (First-place votes) – Points

- 1) Liberty (19) – 199
- 2) High Point (1) – 160
- 3) Radford – 157
- 4) Gardner-Webb – 143
- 5) Winthrop – 94
- 6) Campbell – 77
- 7) Charleston Southern – 75
- 8) Coastal Carolina – 68
- 9) Presbyterian College – 67
- 10) UNC Asheville – 60

Great Expectations, Part 2

-- For the second straight year, Liberty is ranked in the CollegeInsider.com Women's Mid-Major Top 25 preseason poll. The only Big South team to appear in the preseason poll, the Lady Flames check in at No. 20.

-- Liberty is scheduled to face two other Mid-Major Top 25 teams this season, both inside the Vines Center. The Lady Flames will host No. 19 VCU on Tuesday and will welcome No. 12 James Madison to Lynchburg on Dec. 1.

2011-12 Big South Women's Basketball Preseason All-Conference Team Avery Warley, Liberty (Player of Year) Devon Brown, Liberty Shamia Brown, High Point Da'Naria Erwin-Spencer, Radford Dequesha McClanahan, Winthrop

Liberty's 2010-11 Record

| | |
|--|-------|
| When Liberty controls the tip | 19-7 |
| When opponent controls the tip..... | 3-4 |
| Played at home..... | 10-1 |
| Played on the road | 10-6 |
| Played at a neutral site..... | 2-4 |
| Played a team with a .500+ record..... | 4-6 |
| Played a team with a .500 record..... | 6-1 |
| Played a team with a below .500 record.... | 12-4 |
| When Liberty leads at the half | 19-5 |
| When opponent leads at the half..... | 3-6 |
| When there is a tie at the half..... | 0-0 |
| When Liberty leads with 5:00 left..... | 19-2 |
| When opponent leads with 5:00 left | 3-8 |
| When there is a tie with 5:00 left | 0-1 |
| When Liberty leads with 1:00 left..... | 22-1 |
| When opponent leads with 1:00 left | 0-9 |
| When there is a tie with 1:00 left | 0-1 |
| When Liberty outrebounds opponent | 22-8 |
| When opponent outrebounds Liberty | 0-2 |
| When the teams' rebound totals are equal...0-1 | |
| When Liberty shoots 50% or better (FG)..... | 5-0 |
| When Liberty shoots less than 50% (FG). 17-11 | |
| When Liberty outshoots its opponents | 19-4 |
| When opponents outshoot Liberty | 2-7 |
| When the teams shoot the same pct..... | 1-0 |
| When Liberty shoots more 3-pointers..... | 3-6 |
| When opponent shoots more 3-pointers | 18-5 |
| When same amount of 3-pointers shot..... | 1-0 |
| When Liberty shoots more free throws..... | 19-4 |
| When opponent shoots more free throws..... | 2-6 |
| When same number of free throws taken..... | 1-1 |
| When opponent shoots 50% or better (FG)..0-2 | |
| When opponent shoots less than 50% (FG) 20-11 | |
| When Liberty has more turnovers | 11-10 |
| When opponent has more turnovers | 9-0 |
| When turnovers are the same | 2-1 |
| When Liberty blocks more shots | 10-6 |
| When opponent blocks more shots | 7-3 |
| When blocks are the same..... | 5-2 |
| When Liberty has more steals | 12-3 |
| When opponent has more steals..... | 7-8 |
| When steals are the same..... | 3-0 |
| When Liberty bench outscores opponent.... | 7-5 |
| When opponent bench outscores Liberty ... | 12-6 |
| When both benches score the same..... | 3-0 |
| When Liberty scores 50 or fewer points | 1-5 |
| When Liberty scores 51-60 points..... | 6-4 |
| When Liberty scores 61-70 points | 8-2 |
| When Liberty scores 71-80 points | 6-0 |
| When Liberty scores 81 or more points..... | 1-0 |
| When the game is decided by 1-5 points | 5-6 |
| When the game is decided by 6-10 points ... | 3-2 |
| When the game is decided by 11+ points... 14-3 | |
| November Games | 3-4 |
| December Games | 2-3 |
| January Games | 8-1 |
| February Games..... | 5-1 |
| March Games | 4-2 |
| Sunday | 1-2 |
| Monday | 5-3 |
| Tuesday..... | 3-1 |
| Wednesday..... | 1-1 |
| Thursday..... | 0-0 |
| Friday..... | 3-2 |
| Saturday | 9-2 |
| When wearing white uniforms | 12-2 |
| When wearing red uniforms..... | 3-3 |
| When wearing blue uniforms..... | 7-6 |

Is it Time for Basketball Already?

Friday's game will equal the earliest season opener in Liberty women's basketball history. The 2006-07 Lady Flames tipped off their season with a 91-53 home win over Norfolk State on Nov. 11, 2006.

Outstanding Slate of Opponents

The Lady Flames' schedule features numerous teams coming off strong 2010-11 seasons in which they qualified for NCAA Division I postseason play. The following list is organized chronologically according to Liberty's schedule.

| Date | Opponent | 2010-11 Record | Postseason Results |
|------------------|-----------------------|----------------|--------------------|
| Nov. 15 | VCU | 19-12 | WNIT First Round |
| Nov. 25 | Oklahoma | 23-12 | NCAA Sweet 16 |
| Nov. 26 | Vanderbilt (possible) | 20-12 | NCAA First Round |
| Dec. 1 | James Madison | 26-8 | NCAA First Round |
| Dec. 7 | Virginia | 18-16 | WNIT Quarterfinals |
| Dec. 20 | Richmond | 18-12 | WNIT First Round |
| Jan. 30, Feb. 25 | Gardner-Webb | 23-11 | NCAA First Round |

Winningest Active Coaches

Through 12 seasons at Liberty, head coach Carey Green remains in elite company. He ranks as the 11th-winningest active NCAA Division I women's basketball coach, entering the 2011-12 campaign with a .753 career winning percentage. Here is a look at the top 15 coaches on the impressive list.

Coach, Current Team

| | Yrs. | Won | Lost | Pct. |
|---|-----------|------------|-----------|-------------|
| 1) Geno Auriemma, Connecticut | 26 | 771 | 124 | .861 |
| 2) Pat Summitt, Tennessee | 37 | 1,071 | 199 | .843 |
| 3) Tara VanDerveer, Stanford | 32 | 826 | 198 | .807 |
| 4) Kim Mulkey, Baylor | 11 | 298 | 79 | .790 |
| 5) Joe Foley, UALR | 24 | 609 | 173 | .779 |
| 6) Brian Giorgis, Marist | 9 | 225 | 65 | .776 |
| 7) Wes Moore, Chattanooga | 22 | 507 | 155 | .766 |
| 8) Robin Selvig, Montana | 33 | 758 | 233 | .765 |
| 9) Gail Goestenkors, Texas | 19 | 480 | 149 | .763 |
| 10) Rick Insell, Middle Tennessee State | 6 | 148 | 47 | .759 |
| 11) Carey Green, Liberty | 12 | 286 | 94 | .753 |
| 12) Andy Landers, Georgia | 32 | 773 | 259 | .749 |
| 13) Kevin McGuff, Washington | 9 | 214 | 73 | .746 |
| 14) Sylvia Hatchell, North Carolina | 36 | 859 | 303 | .739 |
| 15) C. Vivian Stringer, Rutgers | 40 | 863 | 308 | .737 |

Rulers of the Rebounds

Liberty has ranked among the nation's top five teams for rebound margin in each of the last nine seasons, leading the country on three occasions.

| Season | National Rank | Rebound Margin |
|----------------|---------------|----------------|
| 2002-03 | 2 | +11.3 |
| 2003-04 | 1 | +11.7 |
| 2004-05 | 1 | +13.8 |
| 2005-06 | 3 | +10.6 |
| 2006-07 | 5 | +10.6 |
| 2007-08 | 5 | +10.2 |
| 2008-09 | 2 | +12.7 |
| 2009-10 | 1 | +13.9 |
| 2010-11 | 2 | +12.7 |

The Container is Half Full

The Lady Flames went 5-0 last season and are now 78-1 under head coach Carey Green when making at least 50 percent of their field goals.

Top 50 Scorers in Liberty History

| | |
|-------------------------|--------------|
| 1. Elena Kisseleva | 2,154 |
| 2. Megan Frazee | 1,883 |
| 3. Katie Feenstra | 1,845 |
| 4. Sharon Wilkerson | 1,733 |
| 5. Sarah Wilkerson | 1,331 |
| 6. Ginny Holloway | 1,180 |
| 7. Sharon Snodgrass | 1,169 |
| 8. Kristal Tharp | 1,161 |
| 9. Moriah Frazee | 1,147 |
| 10. Pam Wilder | 1,120 |
| 11. Brenda Gunsallus | 1,078 |
| 12. Cynthia Thomson | 1,055 |
| 13. Avery Warley | 1,027 |
| 14. Devon Brown | 917 |
| 15. Dawn Coleman | 908 |
| 16. Daina Staugaitiene | 846 |
| 17. Sandra Bridges | 822 |
| 18. Reggie Gomes | 810 |
| 19. Kristi Mercer | 809 |
| 20. Lil Cooper | 808 |
| 21. Michelle Fricke | 803 |
| 22. Stacey White | 801 |
| 23. Malynda Keck | 792 |
| 24. Sheila Ford | 761 |
| 25. Pam Stanfield | 752 |
| 26. Michelle Wyms | 748 |
| 27. Sharon Freet | 727 |
| 28. Jeri Wiley | 717 |
| 29. Annetta Paraham | 705 |
| 30. Trish Harris | 697 |
| 31. Allyson Fasnacht | 672 |
| 32. Courtney Watkins | 669 |
| 33. Rachel Hammond | 663 |
| 34. Harriett Blair | 651 |
| 35. Meribeth Feenstra | 628 |
| 36. Monique Leonard | 624 |
| 37. Rachel Young | 610 |
| 38. Kristina Palaimaite | 600 |
| 39. Carla Weaver | 594 |
| 40. Theresa Bream | 589 |
| 41. Anna Barrington | 579 |
| 42. Molly Frazee | 571 |
| 43. Missy Roberts | 560 |
| 44. Erin Wall | 551 |
| 45T. Beth Ralph | 547 |
| 45T. Irene Sloof | 547 |
| 47. Angie Johnson | 545 |
| 48. Kathy Wooten | 543 |
| 49. Stephanie Walker | 524 |
| 50. Amber Mays | 522 |

Other Current Players:

| | |
|---------------------|-----|
| Tolu Omotola | 280 |
| Danika Dale | 270 |
| LaKendra Washington | 217 |

From Red, White and Blue to Red, White and Blue

-- Avery Warley gained her first experience with USA Basketball in October, playing for Team USA at the Pan American Games.

-- Warley was part of a Team USA squad that went 2-2, finishing in seventh place.

-- Warley finished with 10 points, 16 rebounds, four assists and two steals. She shot 42.9 percent (3-of-7) from the field and 100 percent (4-of-4) from the free throw line.

-- Warley's best showing came in the 7th-place game against Jamaica on Oct. 24. She helped Team USA post an 87-41 win, finishing with six points, 10 rebounds and four assists.

Milestone Watch

Avery Warley enters her senior season within striking distance of Liberty's career rebounding record, Katie Feenstra's total of 1,033 rebounds.

Warley's Career Rebounding Total: 901 rebounds

Rebounds Needed to Pass Feenstra: 133 rebounds

When Warley Would Break the Record at Her 2010-11 Rebounding Pace (11.0 rpg):

Jan. 7, 2012 - Home game vs. High Point

When Warley Would Break the Record at Her Career Rebounding Pace (9.1 rpg):

Jan. 14, 2012 - Road game vs. Coastal Carolina

Milestone Watch, Part 2

Devon Brown begins the 2011-12 campaign needing only 83 points to become the 14th 1,000-point scorer in program history.

Brown's Career Scoring Total: 917 points

Points Needed for 1,000: 83 points

When Brown Would Score Point No. 1,000 at Her 2010-11 Scoring Pace (13.5 ppg):

Dec. 1, 2011 - Home game vs. James Madison

When Brown Would Score Point No. 1,000 at Her Career Scoring Pace (15.5 ppg):

Nov. 26, 2011 - Championship/consolation game at Vanderbilt

Climbing the Charts

Big South Career Rebounds

- 1) Kate Sanford, CSU - 1,127
- 2) Katie Feenstra, Liberty - 1,033
- 3) Karen Bowles, Radford - 1,012
- 4) Megan Frazee, Liberty - 951
- 5) Corrie Fertitta, Radford - 915
- 6) Avery Warley, Liberty - 901**

Liberty Career Offensive Rebounds

- 1T) Katie Feenstra, Sharon Snodgrass - 397
- 3) Avery Warley - 364**

Liberty Career Defensive Rebounds

- 1) Katie Feenstra - 636
- 2) Sharon Snodgrass - 629
- 3) Megan Frazee - 613
- 4) Elena Kisseleva - 548
- 5) Avery Warley - 537**

Liberty Career Double-Doubles

- 1) Megan Frazee - 50
- 2) Katie Feenstra - 49
- 3) Avery Warley - 32**

Liberty Career Blocked Shots

- 1) Katie Feenstra - 257
- 2) Meribeth Feenstra - 223
- 3) Jennifer Fairfax - 131
- 4) Avery Warley - 111**

Liberty Career 3-Pointers

- 1) Cynthia Thomson - 227
- 2) Sharon Wilkerson - 172
- 3) Dawn Coleman - 170
- 4) Kristal Tharp - 151
- 5) Daina Staugaitiene - 106
- 6) Sarah Wilkerson - 104
- 7) Elena Kisseleva - 103
- 8) Megan Frazee - 98
- 9) Genie Stinnett - 95
- 10) Courtney Watkins - 84
- 11) Rachel Hammond - 82
- 12) Irene Sloof - 77
- 13) Rachel Young - 76
- 14) Devon Brown - 75**

**Top 50 Rebounders
in Liberty History**

| | |
|---------------------------|------------|
| 1. Katie Feenstra | 1,033 |
| 2. Sharon Snodgrass | 1,026 |
| 3. Megan Frazee | 951 |
| 4. Avery Warley | 901 |
| 5. Elena Kisseleva | 876 |
| 6. Carla Weaver | 859 |
| 7. Sharon Wilkerson | 625 |
| 8. Moriah Frazee | 601 |
| 9. Sharon Freet | 590 |
| 10. Kristina Palaimaite | 586 |
| 11. Pam Stanfield | 583 |
| 12. Lil Cooper | 578 |
| 13. Annetta Paraham | 556 |
| 14. Meribeth Feenstra | 547 |
| 15. Theresa Bream | 536 |
| 16. Jennifer Fairfax | 533 |
| 17T. Wendy Johnson | 532 |
| 17T. Malynda Keck | 532 |
| 19. Pam Wilder | 529 |
| 20. Kathy Wooten | 504 |
| 21. Michelle Fricke | 500 |
| 22. Helen Gomes | 493 |
| 23. Trish Harris | 484 |
| 24. Flori Willie | 478 |
| 25. Michelle Wyrms | 472 |
| 26. Kristal Tharp | 466 |
| 27. Stacey White | 456 |
| 28. Lynn Beardslee | 450 |
| 29. Karolina Piotrkiewicz | 445 |
| 30. Sarah Wilkerson | 442 |
| 31. Erin Wall | 423 |
| 32T. Ginny Holloway | 420 |
| 32T. Daina Staugaitiene | 420 |
| 34. Dawn Coleman | 405 |
| 35. Jayne Mottershead | 401 |
| 36. Sheila Ford | 395 |
| 37. Angie Johnson | 389 |
| 38. Devon Brown | 379 |
| 39. Trena Criss | 370 |
| 40. Erma Williams | 357 |
| 41. Rebecca Lightfoot | 351 |
| 42. Kylee Beecher | 350 |
| 43. Courtney Watkins | 327 |
| 44. Crystal Peace | 320 |
| 45. Molly Frazee | 319 |
| 46. Monique Leonard | 315 |
| 47. Jelena Antic | 312 |
| 48. Harriett Blair | 310 |
| 49. Reggie Gomes | 308 |
| 50. Jamie Feagin | 303 |

Other Current Players:

| | |
|---------------------|-----|
| Danika Dale | 230 |
| Tolu Omotola | 196 |
| LaKendra Washington | 80 |

The Last Time ...

A Liberty Individual

Scored 25 points in a game
Avery Warley scored 28 points at High Point, 3/12/11

Scored 30 points in a game
Megan Frazee scored 30 points at Radford, 3/6/09

Grabbed 15 rebounds in a game
Avery Warley totaled 16 rebounds versus Gardner-Webb, 3/13/11

Grabbed 20 rebounds in a game
Avery Warley totaled 21 rebounds at Charleston Southern, 2/28/11

Recorded 10 assists in a game
Amber Mays tallied 10 assists versus Winthrop, 1/9/10

Recorded five steals in a game
Tolu Omotola came up with six steals versus Gardner-Webb, 3/13/11

Blocked five shots in a game
Katie Feenstra blocked six Winthrop shots, 2/28/05

Made five three-pointers in a game
Devon Brown sank five three-pointers versus UNC Asheville, 3/4/11

Made 10 free throws in a game
Megan Frazee made 11 free throws versus UNC Asheville, 2/28/09

Made 20 consecutive free throws (multiple games)
Megan Frazee made 21 straight free throws, spanning 2/9/08 to 2/23/08

Team

Scored 100 points in a game
Defeated Virginia Union, 100-29, 11/30/07

Grabbed 60 rebounds in a game
Totaled 65 rebounds versus Gardner-Webb, 2/12/11

Recorded 25 assists in a game
Tallied 25 assists versus Glenville State, 12/5/09

Recorded 20 steals in a game
Came up with 21 steals versus Radford, 2/26/00

Blocked 10 shots in a game
Blocked 12 Columbia Union shots, 11/16/06

Made 10 three-pointers in a game
Sank 10 three-pointers versus Charleston Southern, 2/18/08

Made 30 free throws in a game
Made 32 free throws versus Houston, 11/24/07

Won 10 straight games
Won 10 straight games, 2/15/10 to 3/14/10

Lost 10 straight games
Lost 12 straight games, 1/27/87 to 2/26/87

Won an overtime game
Won at American in double OT, 76-72, 1/6/04

Lost an overtime game
Lost at High Point in OT, 64-62, 1/20/07

Defeated a Top 25 team
Upset No. 17 DePaul, 88-79, 3/22/05

Start Chart

| Player | Career Starts | Current Streak/Last Start |
|-------------------|----------------------|----------------------------------|
| Avery Warley | 99 | 99 |
| Devon Brown | 56 | 23 |
| Tolu Omotola | 32 | 23 |
| Emily Frazier | 30 | 30 |
| Danika Dale | 3 | March 4, 2011 |
| Brittany Campbell | 1 | Dec. 2, 2008 |
| Jasmine Gardner | 1 | Dec. 18, 2010 |



1

LaKendra

Washington
5-8 Junior Guard
Milwaukee, Wis.
The Hope School

Career Highs

Points - 21

at Lafayette (11-28-09)

FG Made - 9

at Lafayette (11-28-09)

FG Attempts - 12 (Two times)

Most recently, at Lafayette (11-28-09)

3FG Made - 4

vs. St. John's (12-28-10)

3FG Attempts - 7

vs. St. John's (12-28-10)

FT Made - 5

at Coastal Carolina (02-26-11)

FT Attempts - 6

vs. Radford (03-05-10)

Rebounds - 6

vs. Glenville State (11-30-10)

Assists - 4

at UNC Asheville (02-27-10)

Steals - 5

vs. Winston-Salem State (11-13-09)

Blocks - 1 (Four times)

Most recently, at Texas A&M (11-22-10)

2010-11 Game-By-Game Statistics

| OPPONENT | DATE | MIN | FG-FGA | 3FG-FGA | FT-FTA | OFF-DEF-TOT | A | TO | BLK | STL | PTS |
|---------------------|----------|-----|--------|---------|--------|--------------|---|----|-----|-----|-----|
| Creighton | 11-12-10 | 4 | 0-0 | 0-0 | 0-0 | 0-0-0 | 0 | 1 | 0 | 0 | 0 |
| Coll. of Charleston | 11-13-10 | 2 | 0-0 | 0-0 | 0-0 | 1-0-1 | 0 | 2 | 0 | 0 | 0 |
| Virginia Union | 11-16-10 | 17 | 3-7 | 2-4 | 1-2 | 1-1-2 | 1 | 2 | 0 | 1 | 9 |
| Lafayette | 11-20-10 | | | | | Did not play | | | | | |
| Texas A&M | 11-22-10 | 20 | 4-9 | 1-3 | 1-1 | 1-0-1 | 2 | 4 | 1 | 0 | 10 |
| Baylor | 11-26-10 | 17 | 1-4 | 0-2 | 2-3 | 1-1-2 | 0 | 2 | 0 | 0 | 4 |
| Glenville State | 11-30-10 | 16 | 3-5 | 1-2 | 0-1 | 5-1-6 | 0 | 5 | 0 | 3 | 7 |
| James Madison | 12-05-10 | 7 | 0-0 | 0-0 | 0-0 | 0-0-0 | 0 | 0 | 0 | 0 | 0 |
| N.C. Central | 12-18-10 | 16 | 1-1 | 1-1 | 0-0 | 0-0-0 | 0 | 0 | 0 | 0 | 3 |
| VCU | 12-21-10 | 20 | 1-2 | 1-2 | 0-0 | 1-3-4 | 2 | 1 | 0 | 1 | 3 |
| St. John's | 12-28-10 | 24 | 4-9 | 4-7 | 1-2 | 0-2-2 | 0 | 0 | 0 | 1 | 13 |
| La Salle | 12-29-10 | 14 | 3-5 | 2-4 | 0-0 | 0-0-0 | 1 | 0 | 0 | 1 | 8 |
| High Point | 01-03-11 | 14 | 0-1 | 0-1 | 2-4 | 0-1-1 | 0 | 2 | 0 | 1 | 2 |
| Presbyterian Coll. | 01-08-11 | 12 | 0-1 | 0-1 | 0-0 | 0-1-1 | 0 | 1 | 0 | 0 | 0 |
| UNC Asheville | 01-09-11 | | | | | Did not play | | | | | |
| Longwood | 01-14-11 | 18 | 1-3 | 0-0 | 0-1 | 1-0-1 | 1 | 0 | 0 | 0 | 2 |
| Radford | 01-17-11 | 5 | 0-0 | 0-0 | 0-2 | 0-0-0 | 0 | 2 | 0 | 0 | 0 |
| Charleston So. | 01-22-11 | 10 | 0-1 | 0-1 | 0-0 | 1-1-2 | 0 | 0 | 0 | 2 | 0 |
| Coastal Carolina | 01-24-11 | 3 | 0-0 | 0-0 | 0-0 | 1-0-1 | 0 | 0 | 0 | 0 | 0 |
| Winthrop | 01-29-11 | 10 | 0-2 | 0-2 | 0-0 | 0-0-0 | 1 | 0 | 0 | 1 | 0 |
| Gardner-Webb | 01-31-11 | 5 | 0-0 | 0-0 | 0-0 | 0-0-0 | 0 | 0 | 0 | 0 | 0 |
| High Point | 02-05-11 | 6 | 0-0 | 0-0 | 0-0 | 0-0-0 | 0 | 1 | 0 | 0 | 0 |
| Gardner-Webb | 02-12-11 | 5 | 0-0 | 0-0 | 0-0 | 0-1-1 | 0 | 1 | 0 | 0 | 0 |
| Winthrop | 02-14-11 | 13 | 2-4 | 2-2 | 0-0 | 0-0-0 | 0 | 1 | 0 | 1 | 6 |
| Radford | 02-19-11 | 4 | 0-3 | 0-1 | 0-0 | 1-2-3 | 0 | 0 | 0 | 1 | 0 |
| Coastal Carolina | 02-26-11 | 15 | 0-4 | 0-2 | 5-5 | 0-2-2 | 0 | 3 | 0 | 2 | 5 |
| Charleston So. | 02-28-11 | 2 | 0-1 | 0-1 | 0-0 | 0-1-1 | 0 | 1 | 0 | 0 | 0 |
| UNC Asheville | 03-04-11 | 3 | 0-0 | 0-0 | 0-0 | 0-0-0 | 0 | 2 | 0 | 0 | 0 |
| Presbyterian Coll. | 03-07-11 | 6 | 0-1 | 0-0 | 0-0 | 1-0-1 | 1 | 0 | 0 | 1 | 0 |
| Coastal Carolina | 03-11-11 | | | | | Did not play | | | | | |
| High Point | 03-12-11 | 5 | 1-1 | 0-0 | 0-0 | 0-0-0 | 1 | 0 | 0 | 0 | 2 |
| Gardner-Webb | 03-13-11 | | | | | Did not play | | | | | |
| Charlotte | 03-16-11 | 3 | 0-0 | 0-0 | 0-0 | 0-0-0 | 0 | 0 | 0 | 0 | 0 |

Career Stats

| Season | GP | GS | Min | Avg | FG | FGA | Pct | 3FG | 3FGA | Pct | FT | FTA | Pct | ORB | DRB | TOT | Avg | Asst | TO | Blk | Stl | Pts | Avg |
|--------------|-----------|----------|------------|-------------|-----------|------------|-------------|-----------|-----------|-------------|-----------|-----------|-------------|-----------|-----------|-----------|------------|-----------|-----------|----------|-----------|------------|------------|
| 2009-10 | 33 | 0 | 478 | 14.5 | 58 | 131 | .443 | 10 | 42 | .238 | 17 | 34 | .500 | 18 | 30 | 48 | 1.5 | 22 | 54 | 3 | 45 | 143 | 4.3 |
| 2010-11 | 29 | 0 | 296 | 10.2 | 24 | 64 | .375 | 14 | 36 | .389 | 12 | 21 | .571 | 15 | 17 | 32 | 1.1 | 10 | 31 | 1 | 16 | 74 | 2.6 |
| TOTAL | 62 | 0 | 774 | 12.5 | 82 | 195 | .421 | 24 | 78 | .308 | 29 | 55 | .527 | 33 | 47 | 80 | 1.3 | 32 | 85 | 4 | 61 | 215 | 3.5 |



3

Ellee Rollins

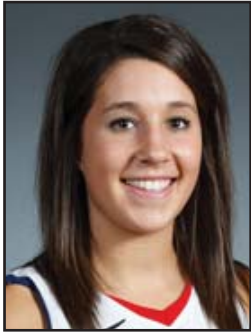
5-7 Freshman Guard

Elkton, Md.

Caravel Academy

Prep: Attended Caravel Academy ... twice named her high school's athlete of the year ... team captain as a senior ... named MVP of the Diamond State Classic Tournament ... Delaware Blue/Gold All-Star selection ... tabbed a Delaware Girls' Basketball Impact Player of the Week ... also played softball, soccer and field hockey during high school ... helped her softball team win a Delaware state championship in 2006 ... served as class president for four years.

Personal: Daughter of Brooke and Corinne Rollins ... grew up in Bulgaria while her parents worked for Athletes In Action ... birthday is on May 14 ... nursing major.



5

Reagan Miller

5-7 Freshman Guard

Sanger, Texas

Sanger HS

Prep: Attended Sanger High School ... helped her team win the District 9-3A title as a senior, capturing District MVP honors in the process ... also garnered all-region and all-state accolades during her senior year ... played in the 2011 TGCA All-Star game ... as a junior, she averaged 16.6 ppg and 3.8 apg, helping Sanger go 23-11 and win a Bi-District championship ... tabbed district co-MVP as a junior ... Sanger won 18 games during her sophomore season, which saw her collect first team all-district and all-area awards ... also starred in volleyball, as evidenced by her District 9-3A MVP award as a senior outside hitter in 2010.

Personal: Daughter of Kevin and Sandra Miller ... father played baseball at North Texas, while mother played basketball at Central Methodist ... birthday is Sept. 18 ... sport management major.

Notes/Highlights

-- Could become the first Lady Flame freshman to start at point guard during her first collegiate game since Sarah Wilkerson did so against Bluefield on Nov. 23. 1996.



12

Danika Dale

*6-1 Senior Forward
Fort Hood, Texas
Shoemaker HS*

Career Highs

Points - 15

vs. N.C. Central (02-04-10)

FG Made - 6

vs. St. John's (12-28-10)

FG Attempts - 9 (Two times)

Most recently, vs. St. John's (12-28-10)

3FG Made - 2 (Three times)

Most recently, vs. Glenville St. (11-30-10)

3FG Attempts - 4

vs. Glenville State (11-30-10)

FT Made - 5

vs. N.C. Central (02-04-10)

FT Attempts - 10

vs. Radford (03-12-10)

Rebounds - 9

vs. Glenville State (12-05-09)

Assists - 6

vs. Presbyterian Coll. (03-02-09)

Steals - 5

vs. Radford (03-05-10)

Blocks - 2 (Four times)

Most recently, at Radford (02-01-10)

2010-11 Game-By-Game Statistics

| OPPONENT | DATE | MIN | FG-FGA | 3FG-FGA | FT-FTA | OFF-DEF-TOT | A | TO | BLK | STL | PTS |
|---------------------|----------|-----|--------|---------|--------|--------------|---|----|-----|-----|-----|
| Creighton | 11-12-10 | 8 | 1-2 | 0-0 | 0-0 | 0-0-0 | 0 | 2 | 0 | 3 | 2 |
| Coll. of Charleston | 11-13-10 | 12 | 2-4 | 0-1 | 0-0 | 1-1-2 | 1 | 2 | 1 | 0 | 4 |
| Virginia Union | 11-16-10 | 14 | 0-3 | 0-1 | 0-0 | 3-4-7 | 4 | 3 | 0 | 2 | 0 |
| Lafayette | 11-20-10 | 17 | 1-3 | 0-2 | 0-2 | 1-4-5 | 2 | 2 | 0 | 1 | 2 |
| Texas A&M | 11-22-10 | 18 | 0-5 | 0-3 | 4-4 | 1-1-2 | 0 | 7 | 0 | 2 | 4 |
| Baylor | 11-26-10 | 15 | 1-4 | 0-2 | 0-0 | 1-3-4 | 1 | 1 | 0 | 1 | 2 |
| Glenville State | 11-30-10 | 18 | 4-9 | 2-4 | 0-0 | 2-1-3 | 0 | 0 | 0 | 2 | 10 |
| James Madison | 12-05-10 | 2 | 0-0 | 0-0 | 0-0 | 0-0-0 | 0 | 0 | 0 | 0 | 0 |
| N.C. Central | 12-18-10 | 9 | 1-4 | 0-1 | 0-1 | 1-1-2 | 0 | 1 | 0 | 0 | 2 |
| VCU | 12-21-10 | 15 | 0-3 | 0-1 | 1-8 | 3-1-4 | 1 | 1 | 0 | 0 | 1 |
| St. John's | 12-28-10 | 23 | 6-9 | 0-1 | 1-4 | 1-2-3 | 1 | 1 | 0 | 0 | 13 |
| La Salle | 12-29-10 | 12 | 0-4 | 0-0 | 0-2 | 5-3-8 | 3 | 0 | 0 | 0 | 0 |
| High Point | 01-03-11 | 15 | 2-5 | 0-0 | 0-2 | 1-5-6 | 0 | 1 | 0 | 1 | 4 |
| Presbyterian Coll. | 01-08-11 | 15 | 0-3 | 0-0 | 2-7 | 3-1-4 | 2 | 1 | 0 | 0 | 2 |
| UNC Asheville | 01-09-11 | 10 | 1-5 | 0-0 | 0-0 | 0-3-3 | 0 | 1 | 0 | 0 | 2 |
| Longwood | 01-14-11 | 4 | 0-1 | 0-1 | 0-0 | 0-1-1 | 0 | 1 | 0 | 0 | 0 |
| Radford | 01-17-11 | 9 | 0-1 | 0-0 | 0-0 | 2-1-3 | 1 | 0 | 0 | 0 | 0 |
| Charleston So. | 01-22-11 | 4 | 0-0 | 0-0 | 0-0 | 0-0-0 | 0 | 0 | 1 | 0 | 0 |
| Coastal Carolina | 01-24-11 | 15 | 1-3 | 0-0 | 2-4 | 0-1-1 | 0 | 2 | 0 | 0 | 4 |
| Winthrop | 01-29-11 | 12 | 0-1 | 0-0 | 2-4 | 0-1-1 | 2 | 2 | 0 | 1 | 2 |
| Gardner-Webb | 01-31-11 | 3 | 0-0 | 0-0 | 0-0 | 0-0-0 | 0 | 1 | 0 | 0 | 0 |
| High Point | 02-05-11 | | | | | Did not play | | | | | |
| Gardner-Webb | 02-12-11 | | | | | Did not play | | | | | |
| Winthrop | 02-14-11 | 10 | 3-3 | 0-0 | 0-0 | 0-2-2 | 0 | 0 | 0 | 0 | 6 |
| Radford | 02-19-11 | 9 | 1-2 | 0-0 | 0-0 | 0-4-4 | 1 | 1 | 0 | 0 | 2 |
| Coastal Carolina | 02-26-11 | 20 | 4-8 | 0-2 | 1-2 | 1-1-2 | 0 | 1 | 0 | 0 | 9 |
| Charleston So. | 02-28-11 | 17 | 2-4 | 0-0 | 0-0 | 0-2-2 | 0 | 5 | 1 | 0 | 4 |
| UNC Asheville | 03-04-11 | 10 | 1-3 | 0-0 | 0-0 | 1-2-3 | 0 | 2 | 1 | 0 | 2 |
| Presbyterian Coll. | 03-07-11 | 15 | 1-3 | 0-2 | 0-0 | 1-1-2 | 0 | 2 | 0 | 0 | 2 |
| Coastal Carolina | 03-11-11 | 3 | 1-2 | 0-0 | 0-0 | 0-0-0 | 1 | 3 | 0 | 0 | 2 |
| High Point | 03-12-11 | 7 | 0-1 | 0-0 | 0-0 | 1-1-2 | 0 | 0 | 0 | 1 | 0 |
| Gardner-Webb | 03-13-11 | 4 | 1-1 | 0-0 | 1-1 | 1-0-1 | 0 | 0 | 0 | 0 | 3 |
| Charlotte | 03-16-11 | 13 | 3-6 | 0-2 | 0-0 | 0-4-4 | 1 | 2 | 0 | 1 | 6 |

Notes/Highlights

-- Made the first three starts of her career last season (Feb. 26 at Coastal Carolina, Feb. 28 at Charleston Southern and March 4 vs. UNC Asheville).

Career Stats

| Season | GP | GS | Min | Avg | FG | FGA | Pct | 3FG | 3FGA | Pct | FT | FTA | Pct | ORB | DRB | TOT | Avg | Asst | TO | Blk | Stl | Pts | Avg |
|--------------|-----------|----------|-------------|-------------|------------|------------|-------------|-----------|-----------|-------------|-----------|------------|-------------|-----------|------------|------------|------------|-----------|------------|-----------|-----------|------------|------------|
| 2008-09 | 26 | 0 | 254 | 9.8 | 16 | 45 | .356 | 3 | 15 | .200 | 8 | 18 | .444 | 10 | 33 | 43 | 1.7 | 21 | 27 | 2 | 12 | 43 | 1.7 |
| 2009-10 | 33 | 0 | 528 | 16.0 | 47 | 114 | .412 | 7 | 24 | .292 | 36 | 59 | .610 | 29 | 77 | 106 | 3.2 | 35 | 56 | 12 | 30 | 137 | 4.2 |
| 2010-11 | 31 | 3 | 358 | 11.5 | 37 | 102 | .363 | 2 | 23 | .087 | 14 | 41 | .341 | 30 | 51 | 81 | 2.6 | 21 | 45 | 4 | 15 | 90 | 2.9 |
| TOTAL | 90 | 3 | 1140 | 12.7 | 100 | 261 | .383 | 12 | 62 | .194 | 58 | 118 | .492 | 69 | 161 | 230 | 2.6 | 77 | 128 | 18 | 57 | 270 | 3.0 |



21

Emily Frazier

*5-7 Sophomore Guard
Magnolia, Texas
Home Schooled*

Career Highs

Points - 14

vs. La Salle (12-29-10)

FG Made - 5

at VCU (12-21-10)

FG Attempts - 10

at VCU (12-21-10)

3FG Made - 2 (Six times)

Most recently, vs. CCU (03-11-11)

3FG Attempts - 4

at James Madison (12-05-10)

FT Made - 6

vs. Lafayette (11-20-10)

FT Attempts - 8

vs. Lafayette (11-20-10)

Rebounds - 6

vs. Radford (01-17-11)

Assists - 8

at High Point (01-03-11)

Steals - 6

at Coastal Carolina (02-26-11)

Blocks - 2

at Winthrop (01-29-11)

2010-11 Game-By-Game Statistics

| OPPONENT | DATE | MIN | FG-FGA | 3FG-FGA | FT-FTA | OFF-DEF-TOT | A | TO | BLK | STL | PTS |
|---------------------|----------|-----|--------|---------|--------|-------------|---|----|-----|-----|-----|
| Creighton | 11-12-10 | 23 | 1-3 | 0-0 | 0-0 | 0-1-1 | 1 | 1 | 0 | 3 | 2 |
| Coll. of Charleston | 11-13-10 | 27 | 3-7 | 0-1 | 0-2 | 2-2-4 | 3 | 0 | 0 | 3 | 6 |
| Virginia Union | 11-16-10 | 16 | 0-5 | 0-2 | 0-0 | 0-0-0 | 6 | 2 | 0 | 1 | 0 |
| Lafayette | 11-20-10 | 20 | 2-6 | 1-1 | 6-8 | 0-2-2 | 3 | 2 | 0 | 1 | 11 |
| Texas A&M | 11-22-10 | 27 | 1-3 | 0-0 | 2-3 | 1-1-2 | 3 | 4 | 0 | 2 | 4 |
| Baylor | 11-26-10 | 25 | 3-4 | 2-3 | 0-1 | 1-1-2 | 1 | 6 | 0 | 0 | 8 |
| Glennville State | 11-30-10 | 21 | 2-2 | 0-0 | 0-0 | 0-3-3 | 2 | 3 | 0 | 1 | 4 |
| James Madison | 12-05-10 | 29 | 3-7 | 2-4 | 0-0 | 0-4-4 | 0 | 0 | 0 | 0 | 8 |
| N.C. Central | 12-18-10 | 15 | 0-2 | 0-1 | 0-0 | 2-0-2 | 1 | 3 | 1 | 0 | 0 |
| VCU | 12-21-10 | 26 | 5-10 | 0-3 | 2-2 | 1-3-4 | 3 | 2 | 0 | 3 | 12 |
| St. John's | 12-28-10 | 25 | 1-3 | 1-2 | 4-4 | 0-2-2 | 3 | 5 | 0 | 0 | 7 |
| La Salle | 12-29-10 | 19 | 4-6 | 2-2 | 4-6 | 1-0-1 | 1 | 2 | 0 | 0 | 14 |
| High Point | 01-03-11 | 29 | 2-4 | 1-2 | 2-2 | 1-2-3 | 8 | 6 | 0 | 0 | 7 |
| Presbyterian Coll. | 01-08-11 | 19 | 0-3 | 0-1 | 2-2 | 1-0-1 | 0 | 0 | 0 | 0 | 2 |
| UNC Asheville | 01-09-11 | 19 | 2-4 | 2-3 | 4-4 | 1-0-1 | 6 | 3 | 0 | 2 | 10 |
| Longwood | 01-14-11 | 32 | 0-5 | 0-1 | 0-1 | 0-5-5 | 4 | 3 | 0 | 1 | 0 |
| Radford | 01-17-11 | 30 | 0-3 | 0-2 | 0-0 | 1-5-6 | 6 | 4 | 0 | 1 | 0 |
| Charleston So. | 01-22-11 | 21 | 2-4 | 1-1 | 5-6 | 0-2-2 | 0 | 6 | 0 | 1 | 10 |
| Coastal Carolina | 01-24-11 | 29 | 1-2 | 1-1 | 0-0 | 0-1-1 | 3 | 1 | 0 | 0 | 3 |
| Winthrop | 01-29-11 | 18 | 2-3 | 2-2 | 0-0 | 0-0-0 | 4 | 4 | 2 | 1 | 6 |
| Gardner-Webb | 01-31-11 | 7 | 0-1 | 0-0 | 1-2 | 0-2-2 | 1 | 3 | 0 | 0 | 1 |
| High Point | 02-05-11 | 19 | 0-2 | 0-0 | 0-1 | 0-2-2 | 3 | 0 | 0 | 0 | 0 |
| Gardner-Webb | 02-12-11 | 31 | 0-3 | 0-1 | 1-2 | 0-1-1 | 2 | 2 | 0 | 1 | 1 |
| Winthrop | 02-14-11 | 20 | 0-0 | 0-0 | 2-2 | 0-0-0 | 1 | 4 | 0 | 1 | 2 |
| Radford | 02-19-11 | 31 | 0-3 | 0-1 | 0-1 | 0-4-4 | 1 | 3 | 0 | 0 | 0 |
| Coastal Carolina | 02-26-11 | 26 | 2-3 | 1-2 | 3-4 | 1-2-3 | 3 | 2 | 0 | 6 | 8 |
| Charleston So. | 02-28-11 | 25 | 1-7 | 1-1 | 0-0 | 0-3-3 | 1 | 4 | 0 | 1 | 3 |
| UNC Asheville | 03-04-11 | 20 | 0-1 | 0-0 | 0-1 | 2-1-3 | 2 | 0 | 0 | 0 | 0 |
| Presbyterian Coll. | 03-07-11 | 20 | 0-3 | 0-2 | 0-1 | 0-1-1 | 4 | 5 | 0 | 1 | 0 |
| Coastal Carolina | 03-11-11 | 36 | 4-5 | 2-2 | 0-0 | 0-1-1 | 2 | 4 | 0 | 2 | 10 |
| High Point | 03-12-11 | 31 | 1-5 | 1-2 | 0-1 | 1-1-2 | 2 | 2 | 0 | 1 | 3 |
| Gardner-Webb | 03-13-11 | 12 | 0-4 | 0-3 | 0-0 | 0-0-0 | 2 | 2 | 0 | 0 | 0 |
| Charlotte | 03-16-11 | 22 | 1-4 | 0-2 | 0-0 | 2-3-5 | 3 | 5 | 0 | 0 | 2 |

Notes/Highlights

- Will celebrate her 21st birthday on Sunday (Nov. 13).
- Named to the Big South All-Freshman team last season.
- Voted Big South Freshman of the Week on Nov. 30 and Jan. 4.
- Her eight assists at High Point on Jan. 3 were the most by a Lady Flame since Amber Mays tallied eight assists versus North Carolina Central on Feb. 4, 2010. It was the first time a Liberty freshman posted eight assists since Rachel McLeod's eight-assist performance versus High Point in the Big South Championship semifinals on March 15, 2008.
- Her six steals at Coastal Carolina on Feb. 26 were tied with Tolu Omotola for the most by a Lady Flame last season. Frazier was the first Liberty freshman to record six steals since Michelle Parker came up with a half-dozen steals at American on Jan. 6, 2004.
- Her 85 assists last season were the most by a Liberty freshman since Allyson Fasnacht had 87 helpers in 2004-05.

Career Stats

| Season | GP | GS | Min | Avg | FG | FGA | Pct | 3FG | 3FGA | Pct | FT | FTA | Pct | ORB | DRB | TOT | Avg | Asst | TO | Blk | Stl | Pts | Avg |
|---------|----|----|-----|------|----|-----|------|-----|------|------|----|-----|------|-----|-----|-----|-----|------|----|-----|-----|-----|-----|
| 2010-11 | 33 | 30 | 770 | 23.3 | 43 | 127 | .339 | 20 | 48 | .417 | 38 | 56 | .679 | 18 | 55 | 73 | 2.2 | 85 | 93 | 3 | 33 | 144 | 4.4 |



22

Tolu Omotola
6-3 R-Junior F/C
Houston, Texas
Bellaire HS (TCU)

Career Highs

Points - 19
at Radford (02-19-11)
FG Made - 7
vs. Gardner-Webb (02-12-11)
FG Attempts - 14
vs. Presbyterian College (03-07-11)
3FG Made - 1 (Four times)
Most recently, vs. G.-Webb (02-12-11)
3FG Attempts - 5
vs. Presbyterian College (03-07-11)
FT Made - 7
at Radford (02-19-11)
FT Attempts - 10
at Texas A&M (11-22-10)
Rebounds - 12 (Two times)
Most recently, vs. High Point (02-05-11)
Assists - 4
at Gardner-Webb (01-31-11)
Steals - 6
vs. Gardner-Webb (03-13-11)
Blocks - 3 (Five times)
Most recently, at High Point (03-12-11)

2010-11 Game-By-Game Statistics

| OPPONENT | DATE | MIN | FG-FGA | 3FG-FGA | FT-FTA | OFF-DEF-TOT | A | TO | BLK | STL | PTS |
|---------------------|----------|-----|--------|---------|--------|-------------|---|----|-----|-----|-----|
| Creighton | 11-12-10 | 22 | 1-8 | 0-3 | 2-2 | 0-2-2 | 0 | 2 | 3 | 3 | 4 |
| Coll. of Charleston | 11-13-10 | 25 | 3-8 | 0-0 | 0-1 | 2-7-9 | 0 | 2 | 2 | 1 | 6 |
| Virginia Union | 11-16-10 | 14 | 5-7 | 0-0 | 2-2 | 2-3-5 | 0 | 1 | 0 | 0 | 12 |
| Lafayette | 11-20-10 | 19 | 2-6 | 0-1 | 0-0 | 3-0-3 | 0 | 3 | 0 | 0 | 4 |
| Texas A&M | 11-22-10 | 25 | 4-6 | 1-1 | 4-10 | 3-4-7 | 0 | 2 | 0 | 1 | 13 |
| Baylor | 11-26-10 | 19 | 2-6 | 0-1 | 0-0 | 3-2-5 | 0 | 4 | 1 | 0 | 4 |
| Glenville State | 11-30-10 | 21 | 5-11 | 0-0 | 2-3 | 5-4-9 | 0 | 2 | 0 | 1 | 12 |
| James Madison | 12-05-10 | 11 | 1-5 | 0-0 | 0-0 | 1-2-3 | 0 | 0 | 0 | 0 | 2 |
| N.C. Central | 12-18-10 | 25 | 4-10 | 0-2 | 0-2 | 2-6-8 | 2 | 3 | 3 | 0 | 8 |
| VCU | 12-21-10 | 24 | 3-7 | 1-1 | 0-0 | 1-2-3 | 0 | 2 | 3 | 2 | 7 |
| St. John's | 12-28-10 | 26 | 2-5 | 0-0 | 0-0 | 4-4-8 | 2 | 5 | 0 | 0 | 4 |
| La Salle | 12-29-10 | 25 | 0-6 | 0-1 | 2-4 | 2-2-4 | 1 | 1 | 0 | 2 | 2 |
| High Point | 01-03-11 | 25 | 4-10 | 0-0 | 1-2 | 4-8-12 | 0 | 2 | 0 | 2 | 9 |
| Presbyterian Coll. | 01-08-11 | 26 | 4-13 | 0-0 | 0-0 | 3-3-6 | 1 | 0 | 0 | 0 | 8 |
| UNC Asheville | 01-09-11 | 20 | 5-7 | 0-0 | 0-0 | 4-2-6 | 0 | 2 | 1 | 0 | 10 |
| Longwood | 01-14-11 | 21 | 5-7 | 0-0 | 0-0 | 1-6-7 | 1 | 2 | 2 | 3 | 10 |
| Radford | 01-17-11 | 25 | 3-6 | 0-0 | 6-8 | 2-2-4 | 1 | 3 | 1 | 0 | 12 |
| Charleston So. | 01-22-11 | 21 | 4-7 | 0-0 | 0-0 | 2-2-4 | 1 | 1 | 0 | 1 | 8 |
| Coastal Carolina | 01-24-11 | 29 | 4-10 | 0-1 | 2-2 | 4-2-6 | 0 | 2 | 0 | 1 | 10 |
| Winthrop | 01-29-11 | 23 | 5-7 | 1-1 | 0-0 | 2-5-7 | 2 | 1 | 1 | 2 | 11 |
| Gardner-Webb | 01-31-11 | 32 | 5-7 | 0-1 | 2-6 | 3-5-8 | 4 | 1 | 1 | 0 | 12 |
| High Point | 02-05-11 | 26 | 3-7 | 0-0 | 1-4 | 4-8-12 | 1 | 6 | 0 | 1 | 7 |
| Gardner-Webb | 02-12-11 | 28 | 7-12 | 1-3 | 2-4 | 6-3-9 | 1 | 1 | 1 | 1 | 17 |
| Winthrop | 02-14-11 | 15 | 5-9 | 0-1 | 2-2 | 1-2-3 | 1 | 0 | 0 | 0 | 12 |
| Radford | 02-19-11 | 32 | 6-13 | 0-0 | 7-7 | 2-3-5 | 0 | 0 | 1 | 0 | 19 |
| Coastal Carolina | 02-26-11 | 16 | 1-5 | 0-0 | 0-0 | 1-2-3 | 0 | 1 | 0 | 1 | 2 |
| Charleston So. | 02-28-11 | 25 | 4-6 | 0-0 | 0-1 | 3-5-8 | 0 | 2 | 0 | 0 | 8 |
| UNC Asheville | 03-04-11 | 29 | 2-4 | 0-0 | 2-5 | 1-4-5 | 3 | 0 | 0 | 1 | 6 |
| Presbyterian Coll. | 03-07-11 | 27 | 3-14 | 0-5 | 1-1 | 1-4-5 | 0 | 1 | 3 | 3 | 7 |
| Coastal Carolina | 03-11-11 | 31 | 6-7 | 0-0 | 2-2 | 1-2-3 | 1 | 1 | 0 | 1 | 14 |
| High Point | 03-12-11 | 23 | 5-10 | 0-0 | 0-1 | 1-5-6 | 2 | 2 | 3 | 2 | 10 |
| Gardner-Webb | 03-13-11 | 30 | 3-10 | 0-3 | 1-2 | 1-5-6 | 2 | 5 | 0 | 6 | 7 |
| Charlotte | 03-16-11 | 22 | 1-6 | 0-1 | 1-2 | 1-4-5 | 1 | 1 | 1 | 1 | 3 |

Notes/Highlights

- Averaged 9.9 ppg and 6.4 rpg during conference play last season.
- Her six steals in the Big South Championship title game against Gardner-Webb tied Emily Frazier for the most by a Lady Flame in a single contest in 2010-11.
- Liberty went 12-2 a year ago when Omotola scored in double figures.
- Trained with the Nigerian National Team during the summer of 2011.

Career Stats

| Season | GP | GS | Min | Avg | FG | FGA | Pct | 3FG | 3FGA | Pct | FT | FTA | Pct | ORB | DRB | TOT | Avg | Asst | TO | Blk | Stl | Pts | Avg |
|---------|----|----|-----|------|-----|-----|------|-----|------|------|----|-----|------|-----|-----|-----|-----|------|----|-----|-----|-----|-----|
| 2010-11 | 33 | 32 | 782 | 23.7 | 117 | 262 | .447 | 4 | 26 | .154 | 42 | 73 | .575 | 76 | 120 | 196 | 5.9 | 27 | 61 | 27 | 36 | 280 | 8.5 |



23

Avery Warley
 6-3 R-Senior Center
 Washington, D.C.
 H.D. Woodson HS

Career Highs

Points - 28
 at High Point (03-12-11)
FG Made - 12
 at High Point (03-12-11)
FG Attempts - 14 (Two times)
 Most recently, at High Point (03-12-11)
3FG Made - 0
 None
3FG Attempts - 1
 at UNC Asheville (02-27-10)
FT Made - 8
 at High Point (01-30-10)
FT Attempts - 13
 vs. Gardner-Webb (02-12-11)
Rebounds - 21
 at Charleston Southern (02-28-11)
Assists - 5
 at Charleston Southern (02-28-11)
Steals - 4 (Two times)
 Most recently, at G.-Webb (01-31-11)
Blocks - 4 (Three times)
 at High Point (03-12-11)

2010-11 Game-By-Game Statistics

| OPPONENT | DATE | MIN | FG-FGA | 3FG-FGA | FT-FTA | OFF-DEF-TOT | A | TO | BLK | STL | PTS |
|---------------------|----------|-----|--------|---------|--------|-------------|---|----|-----|-----|-----|
| Creighton | 11-12-10 | 33 | 5-8 | 0-0 | 1-1 | 2-6-8 | 0 | 6 | 1 | 2 | 11 |
| Coll. of Charleston | 11-13-10 | 14 | 1-3 | 0-0 | 1-3 | 4-1-5 | 0 | 5 | 1 | 1 | 3 |
| Virginia Union | 11-16-10 | 24 | 7-10 | 0-0 | 2-4 | 7-6-13 | 2 | 2 | 0 | 0 | 16 |
| Lafayette | 11-20-10 | 16 | 1-2 | 0-0 | 2-2 | 1-4-5 | 0 | 0 | 0 | 0 | 4 |
| Texas A&M | 11-22-10 | 12 | 1-4 | 0-0 | 0-0 | 3-3-6 | 0 | 1 | 0 | 0 | 2 |
| Baylor | 11-26-10 | 20 | 2-6 | 0-0 | 2-2 | 1-3-4 | 0 | 2 | 0 | 0 | 6 |
| Glennville State | 11-30-10 | 24 | 6-8 | 0-0 | 5-7 | 4-6-10 | 1 | 6 | 2 | 2 | 17 |
| James Madison | 12-05-10 | 35 | 5-9 | 0-0 | 4-4 | 2-5-7 | 0 | 4 | 0 | 1 | 14 |
| N.C. Central | 12-18-10 | 28 | 4-10 | 0-0 | 6-9 | 4-6-10 | 1 | 2 | 1 | 0 | 14 |
| VCU | 12-21-10 | 17 | 2-4 | 0-0 | 1-1 | 3-3-6 | 0 | 2 | 0 | 1 | 5 |
| St. John's | 12-28-10 | 15 | 1-3 | 0-0 | 0-0 | 2-4-6 | 0 | 2 | 0 | 1 | 2 |
| La Salle | 12-29-10 | 27 | 5-6 | 0-0 | 0-3 | 8-6-14 | 1 | 3 | 2 | 1 | 10 |
| High Point | 01-03-11 | 31 | 6-11 | 0-0 | 0-2 | 6-9-15 | 1 | 2 | 2 | 2 | 12 |
| Presbyterian Coll. | 01-08-11 | 21 | 5-6 | 0-0 | 2-3 | 2-5-7 | 2 | 0 | 1 | 0 | 12 |
| UNC Asheville | 01-09-11 | 15 | 4-5 | 0-0 | 3-5 | 5-6-11 | 0 | 0 | 2 | 1 | 11 |
| Longwood | 01-14-11 | 30 | 6-8 | 0-0 | 1-3 | 5-7-12 | 1 | 2 | 0 | 0 | 13 |
| Radford | 01-17-11 | 37 | 6-11 | 0-0 | 2-2 | 5-7-12 | 0 | 4 | 0 | 4 | 14 |
| Charleston So. | 01-22-11 | 34 | 6-9 | 0-0 | 3-3 | 7-9-16 | 1 | 1 | 1 | 2 | 15 |
| Coastal Carolina | 01-24-11 | 32 | 4-7 | 0-0 | 6-7 | 4-9-13 | 0 | 4 | 1 | 2 | 14 |
| Winthrop | 01-29-11 | 22 | 3-6 | 0-0 | 1-2 | 5-1-6 | 1 | 3 | 2 | 0 | 7 |
| Gardner-Webb | 01-31-11 | 34 | 5-9 | 0-0 | 2-7 | 4-9-13 | 1 | 4 | 3 | 4 | 12 |
| High Point | 02-05-11 | 37 | 8-12 | 0-0 | 2-3 | 6-8-14 | 0 | 5 | 1 | 1 | 18 |
| Gardner-Webb | 02-12-11 | 32 | 3-11 | 0-0 | 4-13 | 8-12-20 | 1 | 5 | 1 | 0 | 10 |
| Winthrop | 02-14-11 | 27 | 6-10 | 0-0 | 4-5 | 3-9-12 | 1 | 1 | 2 | 0 | 16 |
| Radford | 02-19-11 | 28 | 7-8 | 0-0 | 5-8 | 6-9-15 | 1 | 1 | 1 | 2 | 19 |
| Coastal Carolina | 02-26-11 | 26 | 4-8 | 0-0 | 2-3 | 4-5-9 | 1 | 2 | 0 | 1 | 10 |
| Charleston So. | 02-28-11 | 37 | 3-3 | 0-0 | 3-4 | 7-14-21 | 5 | 2 | 3 | 1 | 9 |
| UNC Asheville | 03-04-11 | 33 | 10-12 | 0-0 | 4-6 | 7-4-11 | 1 | 1 | 1 | 1 | 24 |
| Presbyterian Coll. | 03-07-11 | 22 | 4-6 | 0-0 | 2-6 | 5-3-8 | 1 | 2 | 2 | 2 | 10 |
| Coastal Carolina | 03-11-11 | 36 | 4-6 | 0-0 | 4-4 | 4-15-19 | 0 | 5 | 3 | 0 | 12 |
| High Point | 03-12-11 | 31 | 12-14 | 0-0 | 4-4 | 7-6-13 | 0 | 2 | 4 | 1 | 28 |
| Gardner-Webb | 03-13-11 | 32 | 4-7 | 0-0 | 5-6 | 7-9-16 | 3 | 0 | 0 | 0 | 13 |
| Charlotte | 03-16-11 | 28 | 5-8 | 0-0 | 4-6 | 3-3-6 | 0 | 1 | 1 | 0 | 14 |

Notes/Highlights

- Played for the USA Pan American Games Team during October.
- Named Big South Conference Preseason Player of the Year for 2011-12.
- Tied for ninth nationally in double-doubles (19) and finished No. 14 in rebounds (11.0 rpg) last season.
- Tabbed Big South Defensive Player of the Year for the first time, and was a first team All-Big South honoree for the second straight season.
- Made the Big South Championship all-tournament team, after averaging 17.7 ppg and grabbing a tournament-record 48 rebounds.
- Broke the Liberty and Big South Conference single-season rebounding records in 2010-11, previously held by Liberty's Katie Feenstra.
- Her double-double (13 points, 16 rebounds) versus Gardner-Webb (March 13) was her 19th of the season and the 32nd of her career. The Lady Flames are 27-5 when she notches a double-double, including 16-3 in 2010-11.

Career Stats

| Season | GP | GS | Min | Avg | FG | FGA | Pct | 3FG | 3FGA | Pct | FT | FTA | Pct | ORB | DRB | TOT | Avg | Asst | TO | Blk | Stl | Pts | Avg |
|--------------|-----------|-----------|-------------|-------------|------------|------------|-------------|----------|----------|-------------|------------|------------|-------------|------------|------------|------------|------------|-----------|------------|------------|-----------|-------------|-------------|
| 2008-09 | 33 | 33 | 832 | 25.2 | 112 | 179 | .626 | 0 | 0 | .000 | 42 | 81 | .519 | 85 | 171 | 256 | 7.8 | 11 | 76 | 47 | 23 | 266 | 8.1 |
| 2009-10 | 33 | 33 | 874 | 26.5 | 149 | 247 | .603 | 0 | 1 | .000 | 66 | 117 | .564 | 128 | 154 | 282 | 8.5 | 13 | 83 | 26 | 32 | 364 | 11.0 |
| 2010-11 | 33 | 33 | 890 | 27.0 | 155 | 250 | .620 | 0 | 0 | .000 | 87 | 138 | .630 | 151 | 212 | 363 | 11.0 | 26 | 82 | 38 | 33 | 397 | 12.0 |
| TOTAL | 99 | 99 | 2596 | 26.2 | 416 | 676 | .615 | 0 | 1 | .000 | 195 | 336 | .580 | 364 | 537 | 901 | 9.1 | 50 | 241 | 111 | 88 | 1027 | 10.4 |



24

Jasmine Gardner

6-2 Soph. Forward

Memphis, Tenn.

Mitchell HS

Career Highs

Points - 10

vs. Glenville State (11-30-10)

FG Made - 4

vs. Glenville State (11-30-10)

FG Attempts - 11

vs. Glenville State (11-30-10)

3FG Made - 0

None

3FG Attempts - 0

None

FT Made - 2 (Three times)

Most recently, vs. Coastal (01-24-11)

FT Attempts - 5

vs. Glenville State (11-30-10)

Rebounds - 13

vs. Glenville State (11-30-10)

Assists - 1 (Three times)

Most recently, vs. Winthrop (02-14-11)

Steals - 2

vs. Winthrop (02-14-11)

Blocks - 2

at Texas A&M (11-22-10)

2010-11 Game-By-Game Statistics

| OPPONENT | DATE | MIN | FG-FGA | 3FG-FGA | FT-FTA | OFF-DEF-TOT | A | TO | BLK | STL | PTS |
|---------------------|----------|-----|--------|---------|--------|--------------|---|----|-----|-----|-----|
| Creighton | 11-12-10 | 2 | 0-0 | 0-0 | 0-0 | 0-0-0 | 0 | 0 | 0 | 0 | 0 |
| Coll. of Charleston | 11-13-10 | 13 | 0-1 | 0-0 | 0-0 | 1-1-2 | 0 | 3 | 0 | 1 | 0 |
| Virginia Union | 11-16-10 | 17 | 2-8 | 0-0 | 0-2 | 4-3-7 | 0 | 3 | 0 | 0 | 4 |
| Lafayette | 11-20-10 | 11 | 1-3 | 0-0 | 0-0 | 3-2-5 | 0 | 0 | 0 | 1 | 2 |
| Texas A&M | 11-22-10 | 21 | 0-1 | 0-0 | 0-2 | 2-4-6 | 1 | 4 | 2 | 1 | 0 |
| Baylor | 11-26-10 | 20 | 1-5 | 0-0 | 1-1 | 2-1-3 | 0 | 1 | 1 | 0 | 3 |
| Glenville State | 11-30-10 | 20 | 4-11 | 0-0 | 2-5 | 5-8-13 | 0 | 4 | 0 | 0 | 10 |
| James Madison | 12-05-10 | 11 | 0-1 | 0-0 | 1-2 | 1-1-2 | 0 | 1 | 0 | 0 | 1 |
| N.C. Central | 12-18-10 | 0+ | 0-0 | 0-0 | 0-0 | 0-0-0 | 0 | 0 | 0 | 0 | 0 |
| VCU | 12-21-10 | | | | | Did not play | | | | | |
| St. John's | 12-28-10 | | | | | Did not play | | | | | |
| La Salle | 12-29-10 | | | | | Did not play | | | | | |
| High Point | 01-03-11 | | | | | Did not play | | | | | |
| Presbyterian Coll. | 01-08-11 | 4 | 0-2 | 0-0 | 0-0 | 2-1-3 | 0 | 0 | 0 | 0 | 0 |
| UNC Asheville | 01-09-11 | 17 | 0-2 | 0-0 | 0-0 | 2-4-6 | 1 | 2 | 1 | 0 | 0 |
| Longwood | 01-14-11 | 6 | 0-1 | 0-0 | 0-0 | 0-0-0 | 0 | 0 | 0 | 0 | 0 |
| Radford | 01-17-11 | 7 | 0-1 | 0-0 | 0-0 | 1-0-1 | 0 | 3 | 0 | 1 | 0 |
| Charleston So. | 01-22-11 | 6 | 0-1 | 0-0 | 2-2 | 1-0-1 | 0 | 0 | 0 | 0 | 2 |
| Coastal Carolina | 01-24-11 | 5 | 0-0 | 0-0 | 2-2 | 2-2-4 | 0 | 2 | 0 | 0 | 2 |
| Winthrop | 01-29-11 | 4 | 1-2 | 0-0 | 1-1 | 1-1-2 | 0 | 1 | 0 | 0 | 4 |
| Gardner-Webb | 01-31-11 | | | | | Did not play | | | | | |
| High Point | 02-05-11 | 4 | 0-0 | 0-0 | 0-0 | 0-0-0 | 0 | 0 | 0 | 0 | 0 |
| Gardner-Webb | 02-12-11 | | | | | Did not play | | | | | |
| Winthrop | 02-14-11 | 14 | 0-2 | 0-0 | 0-0 | 2-1-3 | 1 | 5 | 0 | 2 | 0 |
| Radford | 02-19-11 | 2 | 1-1 | 0-0 | 0-0 | 0-0-0 | 0 | 0 | 0 | 0 | 2 |
| Coastal Carolina | 02-26-11 | 2 | 0-0 | 0-0 | 0-0 | 1-0-1 | 0 | 0 | 0 | 0 | 0 |
| Charleston So. | 02-28-11 | | | | | Did not play | | | | | |
| UNC Asheville | 03-04-11 | 1 | 0-0 | 0-0 | 0-0 | 0-0-0 | 0 | 0 | 0 | 0 | 0 |
| Presbyterian Coll. | 03-07-11 | 11 | 0-3 | 0-0 | 0-0 | 1-1-2 | 0 | 1 | 0 | 1 | 0 |
| Coastal Carolina | 03-11-11 | | | | | Did not play | | | | | |
| High Point | 03-12-11 | 2 | 0-0 | 0-0 | 0-0 | 0-1-1 | 0 | 1 | 0 | 0 | 0 |
| Gardner-Webb | 03-13-11 | | | | | Did not play | | | | | |
| Charlotte | 03-16-11 | | | | | Did not play | | | | | |

Notes/Highlights

-- Made her first career start, Dec. 18 versus North Carolina Central, but played only five seconds before being knocked out of the game with an injury.

-- The first Liberty player to wear No. 24 since the 1999-2000 season, Elena Kisseleva's senior year. Kisseleva is the Lady Flames' all-time leading scorer with 2,154 points and is a member of the Liberty and Big South Conference Athletics Halls of Fame.

Career Stats

| Season | GP | GS | Min | Avg | FG | FGA | Pct | 3FG | 3FGA | Pct | FT | FTA | Pct | ORB | DRB | TOT | Avg | Asst | TO | Blk | Stl | Pts | Avg |
|---------|----|----|-----|-----|----|-----|------|-----|------|------|----|-----|------|-----|-----|-----|-----|------|----|-----|-----|-----|-----|
| 2010-11 | 23 | 1 | 200 | 8.7 | 10 | 45 | .222 | 0 | 0 | .000 | 9 | 17 | .529 | 31 | 31 | 62 | 2.7 | 3 | 31 | 4 | 7 | 29 | 1.3 |



30

Brittany Campbell

6-0 R-Junior G/F

Rustburg, Va.

Brookville HS

Career Highs

Points - 11

vs. Hartford (11-28-08)

FG Made - 4

vs. Hartford (11-28-08)

FG Attempts - 12

at James Madison (12-02-08)

3FG Made - 3

at James Madison (12-02-08)

3FG Attempts - 7

at James Madison (12-02-08)

FT Made - 3

vs. South Alabama (11-29-08)

FT Attempts - 3 (Two times)

Most recently, vs. S. Alabama (11-29-08)

Rebounds - 4

at Coastal Carolina (02-26-11)

Assists - 5

vs. Glenville State (11-30-10)

Steals - 2 (Two times)

Most recently, vs. Va. Union (11-16-10)

Blocks - 1 (Three times)

Most recently, at UNCA (01-09-11)

2010-11 Game-By-Game Statistics

| OPPONENT | DATE | MIN | FG-FGA | 3FG-FGA | FT-FTA | OFF-DEF-TOT | A | TO | BLK | STL | PTS |
|---------------------|----------|-----|--------|---------|--------|--------------|---|----|-----|-----|-----|
| Creighton | 11-12-10 | 3 | 0-0 | 0-0 | 0-0 | 0-1-1 | 0 | 1 | 0 | 0 | 0 |
| Coll. of Charleston | 11-13-10 | 16 | 1-4 | 1-2 | 0-0 | 0-2-2 | 0 | 2 | 0 | 1 | 3 |
| Virginia Union | 11-16-10 | 13 | 1-2 | 0-1 | 0-0 | 0-1-1 | 1 | 1 | 0 | 2 | 2 |
| Lafayette | 11-20-10 | 5 | 0-1 | 0-1 | 0-0 | 0-1-1 | 0 | 1 | 1 | 0 | 0 |
| Texas A&M | 11-22-10 | 5 | 0-1 | 0-1 | 0-0 | 0-0-0 | 0 | 0 | 0 | 0 | 0 |
| Baylor | 11-26-10 | 4 | 0-0 | 0-0 | 0-0 | 0-0-0 | 0 | 0 | 0 | 0 | 0 |
| Glenville State | 11-30-10 | 18 | 0-2 | 0-0 | 0-0 | 2-1-3 | 5 | 3 | 0 | 0 | 0 |
| James Madison | 12-05-10 | | | | | Did not play | | | | | |
| N.C. Central | 12-18-10 | 6 | 0-2 | 0-1 | 0-0 | 0-0-0 | 1 | 0 | 0 | 1 | 0 |
| VCU | 12-21-10 | 9 | 1-2 | 1-2 | 0-0 | 0-2-2 | 0 | 0 | 0 | 0 | 3 |
| St. John's | 12-28-10 | 3 | 1-1 | 1-1 | 0-0 | 0-0-0 | 0 | 2 | 0 | 0 | 3 |
| La Salle | 12-29-10 | 6 | 0-2 | 0-1 | 0-0 | 1-1-2 | 2 | 1 | 0 | 0 | 0 |
| High Point | 01-03-11 | | | | | Did not play | | | | | |
| Presbyterian Coll. | 01-08-11 | 12 | 1-1 | 1-1 | 0-0 | 0-1-1 | 1 | 0 | 0 | 0 | 3 |
| UNC Asheville | 01-09-11 | 13 | 0-4 | 0-2 | 0-0 | 0-2-2 | 3 | 1 | 1 | 1 | 0 |
| Longwood | 01-14-11 | 10 | 1-1 | 0-0 | 1-2 | 0-1-1 | 0 | 0 | 0 | 0 | 3 |
| Radford | 01-17-11 | 4 | 0-1 | 0-0 | 0-0 | 0-0-0 | 0 | 1 | 0 | 0 | 0 |
| Charleston So. | 01-22-11 | 1 | 0-0 | 0-0 | 0-0 | 0-0-0 | 0 | 0 | 0 | 0 | 0 |
| Coastal Carolina | 01-24-11 | | | | | Did not play | | | | | |
| Winthrop | 01-29-11 | 11 | 1-4 | 1-2 | 0-0 | 1-2-3 | 0 | 2 | 0 | 0 | 3 |
| Gardner-Webb | 01-31-11 | | | | | Did not play | | | | | |
| High Point | 02-05-11 | | | | | Did not play | | | | | |
| Gardner-Webb | 02-12-11 | | | | | Did not play | | | | | |
| Winthrop | 02-14-11 | 7 | 1-2 | 0-0 | 0-1 | 1-1-2 | 0 | 0 | 0 | 1 | 2 |
| Radford | 02-19-11 | 3 | 0-1 | 0-0 | 0-0 | 0-0-0 | 0 | 0 | 0 | 0 | 0 |
| Coastal Carolina | 02-26-11 | 18 | 1-3 | 0-1 | 0-0 | 1-3-4 | 0 | 1 | 0 | 0 | 2 |
| Charleston So. | 02-28-11 | 11 | 0-2 | 0-1 | 0-0 | 0-0-0 | 2 | 0 | 0 | 0 | 0 |
| UNC Asheville | 03-04-11 | 5 | 0-1 | 0-1 | 2-2 | 0-0-0 | 0 | 0 | 0 | 0 | 2 |
| Presbyterian Coll. | 03-07-11 | 9 | 0-3 | 0-1 | 0-0 | 2-0-2 | 1 | 0 | 0 | 1 | 0 |
| Coastal Carolina | 03-11-11 | 7 | 0-0 | 0-0 | 0-0 | 1-0-1 | 0 | 2 | 0 | 1 | 0 |
| High Point | 03-12-11 | 3 | 0-1 | 0-0 | 0-0 | 0-2-2 | 0 | 0 | 0 | 0 | 0 |
| Gardner-Webb | 03-13-11 | | | | | Did not play | | | | | |
| Charlotte | 03-16-11 | | | | | Did not play | | | | | |

Notes/Highlights

-- Missed the last 28 games of the 2008-09 campaign and the entire 2009-10 season, due to two separate knee injuries.

Career Stats

| Season | GP | GS | Min | Avg | FG | FGA | Pct | 3FG | 3FGA | Pct | FT | FTA | Pct | ORB | DRB | TOT | Avg | Asst | TO | Blk | Stl | Pts | Avg |
|--------------|-----------|----------|------------|-------------|-----------|-----------|-------------|-----------|-----------|-------------|-----------|-----------|-------------|-----------|-----------|-----------|------------|-----------|-----------|----------|-----------|-----------|------------|
| 2008-09 | 5 | 1 | 104 | 20.8 | 11 | 31 | .355 | 6 | 18 | .333 | 7 | 9 | .778 | 5 | 6 | 11 | 2.2 | 1 | 6 | 1 | 4 | 35 | 7.0 |
| 2009-10 | | | | | | | | | | | | | | | | | | | | | | | |
| 2010-11 | 25 | 0 | 202 | 8.1 | 9 | 41 | .220 | 5 | 19 | .263 | 3 | 5 | .600 | 9 | 21 | 30 | 1.2 | 16 | 18 | 2 | 8 | 26 | 1.0 |
| TOTAL | 30 | 1 | 306 | 10.2 | 20 | 72 | .278 | 11 | 37 | .297 | 10 | 14 | .714 | 14 | 27 | 41 | 1.4 | 17 | 24 | 3 | 12 | 61 | 2.0 |



32

Terika Lunsford

5-9 R-Soph. Guard

Suffolk, Va.

Lakeland HS (Albany)

Career Highs

Points - 3

vs. La Salle (12-29-10)

FG Made - 1 (Two times)

Most recently, at Winthrop (01-29-11)

FG Attempts - 2 (Three times)

Most recently, at UNCA (01-09-11)

3FG Made - 1

vs. La Salle (12-29-10)

3FG Attempts - 2

vs. La Salle (12-29-10)

FT Made - 0

None

FT Attempts - 1

vs. Presbyterian College (03-07-11)

Rebounds - 1 (Four times)

Most recently, vs. PC (03-07-11)

Assists - 1

at Coastal Carolina (02-26-11)

Steals - 1

vs. La Salle (12-29-10)

Blocks - 0

None

2010-11 Game-By-Game Statistics

| OPPONENT | DATE | MIN | FG-FGA | 3FG-FGA | FT-FTA | OFF-DEF-TOT | A | TO | BLK | STL | PTS |
|---------------------|----------|-----|--------|---------|--------|--------------|---|----|-----|-----|-----|
| Creighton | 11-12-10 | | | | | Did not play | | | | | |
| Coll. of Charleston | 11-13-10 | | | | | Did not play | | | | | |
| Virginia Union | 11-16-10 | | | | | Did not play | | | | | |
| Lafayette | 11-20-10 | | | | | Did not play | | | | | |
| Texas A&M | 11-22-10 | | | | | Did not play | | | | | |
| Baylor | 11-26-10 | | | | | Did not play | | | | | |
| Glennville State | 11-30-10 | | | | | Did not play | | | | | |
| James Madison | 12-05-10 | | | | | Did not play | | | | | |
| N.C. Central | 12-18-10 | | | | | Did not play | | | | | |
| VCU | 12-21-10 | | | | | Did not play | | | | | |
| St. John's | 12-28-10 | 2 | 0-0 | 0-0 | 0-0 | 0-1-1 | 0 | 1 | 0 | 0 | 0 |
| La Salle | 12-29-10 | 9 | 1-2 | 1-2 | 0-0 | 1-0-1 | 0 | 0 | 0 | 1 | 3 |
| High Point | 01-03-11 | | | | | Did not play | | | | | |
| Presbyterian Coll. | 01-08-11 | 4 | 0-2 | 0-1 | 0-0 | 0-0-0 | 0 | 0 | 0 | 0 | 0 |
| UNC Asheville | 01-09-11 | 5 | 0-2 | 0-1 | 0-0 | 1-0-1 | 0 | 1 | 0 | 0 | 0 |
| Longwood | 01-14-11 | | | | | Did not play | | | | | |
| Radford | 01-17-11 | | | | | Did not play | | | | | |
| Charleston So. | 01-22-11 | 1 | 0-0 | 0-0 | 0-0 | 0-0-0 | 0 | 0 | 0 | 0 | 0 |
| Coastal Carolina | 01-24-11 | | | | | Did not play | | | | | |
| Winthrop | 01-29-11 | 4 | 1-1 | 0-0 | 0-0 | 0-0-0 | 0 | 0 | 0 | 0 | 2 |
| Gardner-Webb | 01-31-11 | | | | | Did not play | | | | | |
| High Point | 02-05-11 | | | | | Did not play | | | | | |
| Gardner-Webb | 02-12-11 | | | | | Did not play | | | | | |
| Winthrop | 02-14-11 | 5 | 0-0 | 0-0 | 0-0 | 0-0-0 | 0 | 0 | 0 | 0 | 0 |
| Radford | 02-19-11 | 1 | 0-0 | 0-0 | 0-0 | 0-0-0 | 0 | 0 | 0 | 0 | 0 |
| Coastal Carolina | 02-26-11 | 5 | 0-1 | 0-1 | 0-0 | 0-0-0 | 1 | 2 | 0 | 0 | 0 |
| Charleston So. | 02-28-11 | | | | | Did not play | | | | | |
| UNC Asheville | 03-04-11 | | | | | Did not play | | | | | |
| Presbyterian Coll. | 03-07-11 | 4 | 0-0 | 0-0 | 0-1 | 0-1-1 | 0 | 0 | 0 | 0 | 0 |
| Coastal Carolina | 03-11-11 | | | | | Did not play | | | | | |
| High Point | 03-12-11 | 2 | 0-0 | 0-0 | 0-0 | 0-0-0 | 0 | 0 | 0 | 0 | 0 |
| Gardner-Webb | 03-13-11 | | | | | Did not play | | | | | |
| Charlotte | 03-16-11 | | | | | Did not play | | | | | |

Notes/Highlights

-- Started the 2009-10 season as a member of the Albany women's basketball team, before transferring to Liberty after the fall semester.

-- Never appeared in a game for Albany.

-- Had to sit out a full year, due to NCAA transfer regulations.

Career Stats

| Season | GP | GS | Min | Avg | FG | FGA | Pct | 3FG | 3FGA | Pct | FT | FTA | Pct | ORB | DRB | TOT | Avg | Asst | TO | Blk | Stl | Pts | Avg |
|---------|----|----|-----|-----|----|-----|------|-----|------|------|----|-----|------|-----|-----|-----|-----|------|----|-----|-----|-----|-----|
| 2010-11 | 11 | 0 | 42 | 3.8 | 2 | 8 | .250 | 1 | 5 | .200 | 0 | 1 | .000 | 2 | 2 | 4 | 0.4 | 1 | 4 | 0 | 1 | 5 | 0.5 |



34

Katelyn Adams

6-5 Freshman F/C

Burnsville, Minn.

Minnehaha Academy

Prep: Helped Minnehaha Academy reach the Minnesota state tournament all four years, including a AA state championship season in 2009-10 ... Minnehaha also finished as state runner-up during her senior campaign, 2010-11 ... played in the Minnesota Coaches Association All-Star Game as a senior ... three-time All-Trimetro Conference honoree ... averaged 13.3 ppg and 8.0 rpg as a junior and made the all-state tournament roster ... bumped her scoring average up to 13.7 ppg the next year.

Personal: Daughter of Tom and Gail Adams ... birthday is on Sept. 28 ... nursing major.



40

Devon Brown
5-10 R-Junior G/F
Waynesboro, Va.
Waynesboro HS

Career Highs

Points - 29

at High Point (01-30-10)

FG Made - 12

at High Point (01-30-10)

FG Attempts - 19

vs. UNC Asheville (03-04-11)

3FG Made - 5

vs. UNC Asheville (03-04-11)

3FG Attempts - 8

vs. UNC Asheville (03-04-11)

FT Made - 8 (Three times)

Most recently, at JMU (12-05-10)

FT Attempts - 9 (Four times)

Most recently, at JMU (12-05-10)

Rebounds - 13 (Four times)

Most recently, vs. G.-Webb (02-08-10)

Assists - 5

at Longwood (01-14-11)

Steals - 5 (Two times)

Most recently, vs. Coastal (02-20-10)

Blocks - 2 (Six times)

Most recently, vs. High Point (02-05-11)

2010-11 Game-By-Game Statistics

| OPPONENT | DATE | MIN | FG-FGA | 3FG-FGA | FT-FTA | OFF-DEF-TOT | A | TO | BLK | STL | PTS |
|---------------------|----------|-----|--------|---------|--------|--------------|---|----|-----|-----|-----|
| Creighton | 11-12-10 | | | | | Did not play | | | | | |
| Coll. of Charleston | 11-13-10 | | | | | Did not play | | | | | |
| Virginia Union | 11-16-10 | | | | | Did not play | | | | | |
| Lafayette | 11-20-10 | | | | | Did not play | | | | | |
| Texas A&M | 11-22-10 | | | | | Did not play | | | | | |
| Baylor | 11-26-10 | | | | | Did not play | | | | | |
| Glennville State | 11-30-10 | | | | | Did not play | | | | | |
| James Madison | 12-05-10 | 17 | 3-12 | 0-4 | 8-9 | 1-3-4 | 0 | 2 | 0 | 0 | 14 |
| N.C. Central | 12-18-10 | 23 | 4-13 | 1-4 | 0-1 | 2-3-5 | 0 | 2 | 1 | 0 | 9 |
| VCU | 12-21-10 | 25 | 3-11 | 0-4 | 4-6 | 2-1-3 | 0 | 2 | 0 | 1 | 10 |
| St. John's | 12-28-10 | 25 | 3-14 | 0-4 | 5-6 | 4-2-6 | 1 | 2 | 0 | 0 | 11 |
| La Salle | 12-29-10 | 25 | 8-15 | 2-5 | 1-3 | 2-2-4 | 1 | 3 | 0 | 2 | 19 |
| High Point | 01-03-11 | 31 | 4-9 | 3-5 | 6-8 | 1-0-1 | 3 | 0 | 0 | 0 | 17 |
| Presbyterian Coll. | 01-08-11 | 23 | 4-12 | 1-4 | 4-4 | 0-2-2 | 0 | 0 | 0 | 0 | 13 |
| UNC Asheville | 01-09-11 | 23 | 3-10 | 1-4 | 1-1 | 3-4-7 | 2 | 4 | 1 | 2 | 8 |
| Longwood | 01-14-11 | 29 | 9-18 | 4-7 | 5-5 | 4-2-6 | 5 | 2 | 1 | 1 | 27 |
| Radford | 01-17-11 | 28 | 2-11 | 1-5 | 1-2 | 1-2-3 | 3 | 1 | 1 | 2 | 6 |
| Charleston So. | 01-22-11 | 27 | 4-12 | 1-4 | 3-4 | 1-2-3 | 2 | 3 | 0 | 2 | 12 |
| Coastal Carolina | 01-24-11 | 25 | 4-8 | 1-1 | 2-2 | 0-4-4 | 0 | 5 | 0 | 3 | 11 |
| Winthrop | 01-29-11 | 24 | 5-9 | 4-7 | 1-5 | 1-4-5 | 0 | 4 | 0 | 3 | 15 |
| Gardner-Webb | 01-31-11 | 34 | 4-14 | 0-4 | 6-8 | 2-3-5 | 4 | 2 | 0 | 0 | 14 |
| High Point | 02-05-11 | 35 | 6-11 | 0-3 | 3-6 | 1-3-4 | 2 | 1 | 2 | 3 | 15 |
| Gardner-Webb | 02-12-11 | 37 | 5-13 | 2-5 | 4-8 | 1-4-5 | 1 | 3 | 0 | 1 | 16 |
| Winthrop | 02-14-11 | 19 | 5-12 | 1-4 | 2-2 | 1-1-2 | 1 | 1 | 0 | 2 | 13 |
| Radford | 02-19-11 | 20 | 2-7 | 1-2 | 3-4 | 4-3-7 | 1 | 2 | 0 | 1 | 8 |
| Coastal Carolina | 02-26-11 | 24 | 7-14 | 0-2 | 1-2 | 1-3-4 | 2 | 1 | 0 | 2 | 15 |
| Charleston So. | 02-28-11 | 33 | 7-15 | 2-6 | 3-7 | 0-2-2 | 0 | 4 | 0 | 1 | 19 |
| UNC Asheville | 03-04-11 | 28 | 9-19 | 5-8 | 4-4 | 2-3-5 | 0 | 2 | 0 | 2 | 27 |
| Presbyterian Coll. | 03-07-11 | 18 | 5-12 | 2-3 | 0-1 | 0-3-3 | 0 | 0 | 0 | 2 | 12 |
| Coastal Carolina | 03-11-11 | 11 | 0-2 | 0-0 | 0-0 | 0-1-1 | 2 | 1 | 0 | 0 | 0 |
| High Point | 03-12-11 | 24 | 4-11 | 0-0 | 5-5 | 3-2-5 | 4 | 1 | 0 | 1 | 13 |
| Gardner-Webb | 03-13-11 | 37 | 5-14 | 2-7 | 1-5 | 3-3-6 | 2 | 8 | 1 | 1 | 13 |
| Charlotte | 03-16-11 | 24 | 6-17 | 1-5 | 1-2 | 3-3-6 | 1 | 5 | 0 | 2 | 14 |

Notes/Highlights

- Will celebrate her 22nd birthday on Saturday (Nov. 12).
- Preseason All-Big South honoree.
- First team All-Big South selection for the second season in a row a year ago.
- Scored 21 of her 27 points after halftime, Jan. 14, 2011 at Longwood. It was the most points in a half by any Lady Flame since Nov. 25, 2007, when Megan Frazee tossed in 21 second-half points during a win at Xavier.
- Also finished with six rebounds and a career-high five assists at Longwood, becoming the first Lady Flame to post at least 25 points, five rebounds and five assists in the same game since Feb. 20, 1997. That day, Elena Kisseleva notched 27 points, 17 rebounds and seven assists against UNC Greensboro.
- Her career-high five three-pointers versus UNC Asheville on March 4 made her the first Lady Flame with a five three-pointer game since Jan. 31, 2009. Rachel Hammond made five triples against High Point in that contest.
- Ranks No. 14 in Liberty history with 917 career points, making her one of only two Liberty players (also Elena Kisseleva) ever to reach the 900-point mark during their sophomore season.

Career Stats

| Season | GP | GS | Min | Avg | FG | FGA | Pct | 3FG | 3FGA | Pct | FT | FTA | Pct | ORB | DRB | TOT | Avg | Asst | TO | Blk | Stl | Pts | Avg |
|--------------|-----------|-----------|-------------|-------------|------------|------------|-------------|-----------|------------|-------------|------------|------------|-------------|------------|------------|------------|------------|-----------|------------|-----------|-----------|------------|-------------|
| 2009-10 | 33 | 33 | 923 | 28.0 | 208 | 421 | .494 | 40 | 120 | .333 | 110 | 149 | .738 | 83 | 188 | 271 | 8.2 | 46 | 80 | 17 | 65 | 566 | 17.2 |
| 2010-11 | 26 | 23 | 669 | 25.7 | 121 | 315 | .384 | 35 | 107 | .327 | 74 | 110 | .673 | 43 | 65 | 108 | 4.2 | 37 | 61 | 7 | 34 | 351 | 13.5 |
| TOTAL | 59 | 56 | 1592 | 27.0 | 329 | 736 | .447 | 75 | 227 | .330 | 184 | 259 | .710 | 126 | 253 | 379 | 6.4 | 83 | 141 | 24 | 99 | 917 | 15.5 |



44

Catherine Kearney

*6-5 Freshman F/C
Monroeville, N.J.
Gloucester County
Christian School*

Prep: Attended Gloucester County Christian School ... became the first player in Tri-State Christian Athletic Conference history to eclipse the 2,000-point barrier, doing so on an assist from her sister Sarah ... finished with 2,011 points, over 1,000 rebounds and 450 blocked shots for her career ... helped her team win its first-ever Tri-State Association of Christian Schools (TSACS) Tournament as a sophomore ... Gloucester County Christian went 74-6 during her final three seasons on the team ... as a junior, she averaged 21.5 ppg and 12.3 rpg, earning MVP of both the TSACS and the Garden State Association of Christian Schools (GSACS).

Personal: Daughter of Steve and Kate Kearney ... parents both played basketball at St. Joseph's ... birthday is Dec. 4 ... major is sport management.

Notes/Highlights

-- The first Lady Flame to wear No. 44 since Katie Feenstra (2002-05), the program's all-time leading rebounder (1,033 boards) and No. 3 in points (1,845 points). Feenstra went on to play five seasons in the WNBA.



55

Ashley Rininger

6-4 Freshman F/C

Canton, Ohio

GlenOak HS

Prep: Attended GlenOak High School ... honorable mention All-Ohio Division I selection as both a junior and senior ... also earned first team All- Federal League, all-district and All-Stark County recognition both years ... averaged 13.7 ppg and 11.2 rpg as a junior ... senior season statistics included 14.6 ppg and 9.9 rpg ... garnered first team Academic All-County laurels as a senior, thanks to a GPA above 4.0.

Personal: Daughter of Michael Rininger and Joyce Rininger ... birthday is April 15 ... majoring in criminal justice.

Official Basketball Box Score -- Game Totals -- Final Statistics
UNC Greensboro vs Liberty
11-17-09 7:05 p.m. at Lynchburg, Va. (Vines Center)

UNC Greensboro 42 • 1-1

| ## | Player | f | Total | | | 3-Ptr | | | Rebounds | | | PF | TP | A | TO | Blk | Stl | Min |
|--------|--------------------|---|-------|-----|----|-------|----|-----|----------|-----|-----|----|----|----|----|-----|-----|-----|
| | | | FG | FGA | FT | FTA | FG | FGA | FT | FTA | Off | | | | | | | |
| 33 | SMITH, Kendra | f | 1 | 7 | 0 | 0 | 0 | 0 | 1 | 2 | 3 | 2 | 2 | 0 | 3 | 0 | 1 | 25 |
| 41 | GIRSTAUTAITE, Agne | c | 0 | 1 | 1 | 3 | 0 | 0 | 3 | 1 | 4 | 4 | 1 | 0 | 3 | 1 | 0 | 18 |
| 12 | HYSON, Lakhia | g | 4 | 11 | 1 | 5 | 0 | 2 | 1 | 0 | 1 | 3 | 9 | 3 | 3 | 0 | 4 | 23 |
| 15 | FLOYD, Monique | g | 1 | 3 | 3 | 6 | 0 | 0 | 2 | 5 | 7 | 2 | 5 | 2 | 3 | 0 | 2 | 30 |
| 22 | LEIGH, Amanda | g | 3 | 12 | 2 | 9 | 0 | 0 | 1 | 2 | 3 | 1 | 8 | 1 | 3 | 0 | 0 | 23 |
| 02 | DORSETT, Brey | | 1 | 7 | 0 | 3 | 3 | 4 | 1 | 1 | 2 | 1 | 5 | 0 | 3 | 0 | 3 | 17 |
| 03 | MORKUNAITE, Agneta | | 2 | 3 | 0 | 1 | 1 | 2 | 1 | 0 | 1 | 2 | 5 | 2 | 0 | 0 | 0 | 3 |
| 13 | FOLWELL, Sarah | | 1 | 3 | 0 | 2 | 0 | 0 | 1 | 1 | 2 | 1 | 2 | 1 | 1 | 0 | 0 | 16 |
| 14 | BANNER, TaShama | | 0 | 1 | 0 | 0 | 0 | 0 | 0 | 0 | 0 | 1 | 0 | 0 | 0 | 0 | 0 | 2 |
| 24 | RICHBOW, Dayshaun | | 1 | 3 | 1 | 2 | 0 | 2 | 0 | 2 | 2 | 2 | 3 | 1 | 2 | 0 | 0 | 21 |
| 44 | CLAPPER, Amy | | 1 | 1 | 0 | 0 | 0 | 0 | 0 | 2 | 2 | 1 | 2 | 0 | 0 | 0 | 1 | 16 |
| 45 | CORBETT, Dee | | 0 | 0 | 0 | 0 | 0 | 0 | 0 | 1 | 1 | 1 | 0 | 0 | 0 | 0 | 0 | 6 |
| Team | | | | | | | | | 5 | 2 | 7 | | | | | | | |
| Totals | | | 15 | 52 | 4 | 24 | 8 | 19 | 16 | 19 | 35 | 21 | 42 | 10 | 21 | 1 | 11 | 200 |

FG % 1st Half: 9-25 36.0% 2nd half: 6-27 22.2% Game: 15-52 28.8% Deadball
 3FG % 1st Half: 1-9 11.1% 2nd half: 3-15 20.0% Game: 4-24 16.7% Rebounds
 FT % 1st Half: 2-8 25.0% 2nd half: 6-11 54.5% Game: 8-19 42.1% 5

Liberty 60 • 2-0

| ## | Player | f | Total | | | 3-Ptr | | | Rebounds | | | PF | TP | A | TO | Blk | Stl | Min |
|--------|--------------------|---|-------|-----|----|-------|----|-----|----------|-----|-----|----|----|----|----|-----|-----|-----|
| | | | FG | FGA | FT | FTA | FG | FGA | FT | FTA | Off | | | | | | | |
| 15 | BEECHER, Kylee | f | 4 | 8 | 0 | 0 | 3 | 7 | 2 | 3 | 5 | 0 | 11 | 0 | 4 | 0 | 0 | 37 |
| 23 | WARLEY, Avery | f | 0 | 0 | 0 | 0 | 0 | 0 | 2 | 5 | 7 | 4 | 0 | 0 | 1 | 0 | 1 | 19 |
| 21 | MAYS, Amber | g | 4 | 7 | 1 | 1 | 2 | 6 | 0 | 1 | 1 | 2 | 11 | 4 | 5 | 0 | 4 | 26 |
| 32 | McLEOD, Rachel | g | 1 | 7 | 0 | 3 | 0 | 0 | 0 | 1 | 1 | 1 | 2 | 2 | 3 | 0 | 2 | 25 |
| 40 | BROWN, Devon | g | 11 | 15 | 1 | 2 | 3 | 7 | 4 | 5 | 9 | 2 | 26 | 2 | 3 | 0 | 3 | 30 |
| 01 | WASHINGTON, LaKend | | 0 | 2 | 0 | 2 | 2 | 2 | 0 | 0 | 0 | 5 | 2 | 0 | 0 | 0 | 1 | 9 |
| 12 | DALE, Danika | | 0 | 3 | 0 | 0 | 0 | 0 | 1 | 3 | 4 | 2 | 0 | 0 | 1 | 2 | 2 | 16 |
| 25 | MORGAN, Dymond | | 3 | 5 | 0 | 1 | 0 | 0 | 1 | 4 | 5 | 0 | 6 | 2 | 2 | 0 | 1 | 24 |
| 54 | COY, Carra | | 1 | 2 | 0 | 0 | 0 | 0 | 1 | 3 | 4 | 1 | 2 | 0 | 0 | 2 | 0 | 14 |
| Team | | | | | | | | | 2 | 2 | 4 | | | | | | | |
| Totals | | | 24 | 49 | 2 | 9 | 10 | 22 | 13 | 27 | 40 | 17 | 60 | 10 | 19 | 4 | 14 | 200 |

FG % 1st Half: 13-26 50.0% 2nd half: 11-23 47.8% Game: 24-49 49.0% Deadball
 3FG % 1st Half: 1-3 33.3% 2nd half: 1-6 16.7% Game: 2-9 22.2% Rebounds
 FT % 1st Half: 5-7 71.4% 2nd half: 5-15 33.3% Game: 10-22 45.5% 5

Officials: Mark Hardcastle (R), Karen Gruca, Karl Gildner
 Technical fouls: UNC Greensboro-None. Liberty-None.
 Attendance: 786
 Fouled Out: LU #01 (21.0, 2nd)

| Score by periods | 1st | 2nd | Total |
|------------------|-----|-----|-------|
| UNC Greensboro | 21 | 21 | 42 |
| Liberty | 32 | 28 | 60 |

[Contact Us](#)

Liberty (22-11)
Women's Basketball National Ranking Summary
Thru Games 04/05/2011

[Back to team selections](#)[Big South - All Teams](#)

| Category | Rank | Actual | National Leader | Actual |
|--|------|--------|-------------------------------|--------|
| Scoring Offense (333 ranked) | 218 | 60.6 | Gonzaga | 85.3 |
| Scoring Defense (333 ranked) | 17 | 53.9 | Marist | 49.7 |
| Scoring Margin (333 ranked) | 69 | 6.8 | Connecticut | 26.5 |
| Field-Goal Percentage (333 ranked) | 93 | 41.3 | Connecticut | 49.4 |
| Field-Goal Percentage Defense (333 ranked) | 12 | 34.9 | Baylor | 32.3 |
| Free-Throw Percentage (333 ranked) | 324 | 60.5 | Bowling Green | 79.9 |
| Rebound Margin (333 ranked) | 2 | 12.7 | Syracuse | 13.4 |
| Three-Point Field Goals Per Game (333 ranked) | 318 | 3.2 | Fresno St. | 9.8 |
| Three-Point Field-Goal Percentage (278 ranked) | | | Penn St. | 41.5 |
| Won-Lost Percentage (333 ranked) | 62 | 66.7 | Connecticut | 94.7 |
| Assists Per Game (333 ranked) | 211 | 12.0 | Gonzaga | 20.1 |
| Blocked Shots Per Game (333 ranked) | 180 | 3.1 | Baylor | 7.4 |
| Steals Per Game (333 ranked) | 101 | 9.1 | Oral Roberts | 14.4 |
| Turnovers Per Game (333 ranked) | 299 | 20.5 | Marist | 11.2 |
| Personal Fouls Per Game (333 ranked) | 88 | 15.9 | Wyoming | 12.1 |
| Assist Turnover Ratio (333 ranked) | 274 | 0.59 | Gonzaga | 1.51 |
| Three Pt FG Defense (333 ranked) | 13 | 27.2 | Savannah St. | 24.1 |
| Turnover Margin (333 ranked) | 290 | -2.97 | Texas A&M | 8.03 |

| Category | Player | Rank | Actual | National Leader | Actual |
|--|------------------------------|------|--------|--|--------|
| Points Per Game (250 ranked) | | | | Kevi Luper, ORobt | 23.7 |
| Rebounds Per Game (250 ranked) | Avery Warley | 14 | 11.0 | Courtney Hurt, VCU | 12.4 |
| Assists Per Game (250 ranked) | | | | Courtney Vandersloot, Gonzga | 10.2 |
| Blocked Shots Per Game (250 ranked) | Avery Warley | 186 | 1.2 | Louella Tomlinson, StMary | 4.7 |
| Steals Per Game (250 ranked) | | | | Kevi Luper, ORobt | 3.7 |
| Field-Goal Percentage (250 ranked) | | | | Carolyn Swords, BC | 71.4 |
| Free-Throw Percentage (250 ranked) | | | | Emily London, Samfrd | 93.6 |
| Three-Point Field-Goal Percentage (250 ranked) | | | | Cerie Mosgrove, UMass | 49.7 |
| Three-Point Field Goals Per Game (250 ranked) | | | | Katie Tull, CharSo | 3.6 |
| Double Doubles (30 ranked) | Avery Warley | 9 | 19.0 | Courtney Hurt, VCU | 25.0 |
| Triple Doubles (30 ranked) | | | | Louella Tomlinson, StMary | 2.0 |
| Assist Turnover Ratio (250 ranked) | | | | Courtney Vandersloot, Gonzga | 3.08 |

2010-11 Liberty Women's Basketball
Liberty Season Schedule/Results & Leaders (as of Oct 05, 2011)
All games

| RECORD: | OVERALL | HOME | AWAY | NEUTRAL |
|----------------|----------------|-------------|-------------|----------------|
| ALL GAMES | 22-11 | 10-1 | 10-6 | 2-4 |
| CONFERENCE | 14-2 | 7-1 | 7-1 | 0-0 |
| NON-CONFERENCE | 8-9 | 3-0 | 3-5 | 2-4 |

| Date | Opponent | Score | Att. | High Points | High Rebounds |
|-------------|---------------------------|--------------|-------------|---|---------------------------------------|
| 11-12-10 | %vs Creighton | 35-40 L | 2043 | (11)WARLEY, Avery | (8)WARLEY, Avery |
| 11-13-10 | %vs College of Charleston | 46-49 L | 1291 | (16)ANTIC, Jelena | (9)OMOTOLA, Tolu (9)BEECHER, Kylee |
| 11-16-10 | VIRGINIA UNION | w 71-19 | 802 | (17)ANTIC, Jelena | (13)WARLEY, Avery |
| 11-20-10 | LAFAYETTE | w 64-52 | 384 | (16)ANTIC, Jelena | (7)ANTIC, Jelena |
| 11-22-10 | at No. 8/8 Texas A&M | 49-81 L | 3808 | (13)OMOTOLA, Tolu (13)MORGAN, Dymond | (7)OMOTOLA, Tolu |
| 11-26-10 | at No. 2/3 Baylor | 42-81 L | 6492 | (8)FRAZIER, Emily | (5)OMOTOLA, Tolu |
| 11-30-10 | GLENVILLE STATE | w 93-75 | 631 | (17)WARLEY, Avery | (13)GARDNER, Jasmine |
| 12-05-10 | at James Madison | 51-54 L | 2149 | (14)BROWN, Devon (14)WARLEY, Avery | (8)ANTIC, Jelena |
| 12-18-10 | at North Carolina Central | 48-50 L | 183 | (14)WARLEY, Avery | (10)WARLEY, Avery |
| 12-21-10 | at VCU | w 59-57 | 382 | (12)FRAZIER, Emily (12)ANTIC, Jelena | (10)ANTIC, Jelena |
| 12-28-10 | &vs No. 17/17 St. John's | 66-81 L | 4433 | (13)WASHINGTON, LaKen (13)DALE, Danika | (8)OMOTOLA, Tolu |
| 12-29-10 | &vs La Salle | w 73-53 | 1548 | (19)BROWN, Devon | (14)WARLEY, Avery |
| 01-03-11 | *at High Point | w 68-60 | 527 | (17)BROWN, Devon | (15)WARLEY, Avery |
| 01-08-11 | *at Presbyterian College | w 51-40 | 502 | (13)BROWN, Devon | (7)ANTIC, Jelena (7)WARLEY, Avery |
| 01-09-11 | *at UNC Asheville | w 61-44 | 287 | (11)WARLEY, Avery | (11)WARLEY, Avery |
| 01-14-11 | at Longwood | w 75-71 | 350 | (27)BROWN, Devon | (12)WARLEY, Avery |
| 01-17-11 | *RADFORD | 53-62 L | 911 | (15)ANTIC, Jelena | (12)WARLEY, Avery |
| 01-22-11 | *CHARLESTON SOUTHERN | w 63-46 | 858 | (15)WARLEY, Avery | (16)WARLEY, Avery |
| 01-24-11 | *COASTAL CAROLINA | w 58-54 | 868 | (14)WARLEY, Avery | (13)WARLEY, Avery |
| 01-29-11 | *at Winthrop | w 70-33 | 525 | (15)BROWN, Devon | (7)OMOTOLA, Tolu |
| 01-31-11 | *at Gardner-Webb | w 68-56 | 531 | (22)ANTIC, Jelena | (13)WARLEY, Avery |
| 02-05-11 | *HIGH POINT | w 58-57 | 908 | (18)WARLEY, Avery | (14)WARLEY, Avery |
| 02-12-11 | *GARDNER-WEBB | w 56-51 | 1297 | (17)OMOTOLA, Tolu | (20)WARLEY, Avery |
| 02-14-11 | *WINTHROP | w 72-38 | 523 | (16)WARLEY, Avery | (12)WARLEY, Avery |
| 02-19-11 | *at Radford | w 66-50 | 702 | (19)WARLEY, Avery (19)OMOTOLA, Tolu | (15)WARLEY, Avery |
| 02-26-11 | *at Coastal Carolina | w 64-44 | 306 | (15)BROWN, Devon | (9)WARLEY, Avery |
| 02-28-11 | *at Charleston Southern | 51-54 L | 512 | (19)BROWN, Devon | (21)WARLEY, Avery |
| 03-04-11 | *UNC ASHEVILLE | w 72-58 | 1004 | (27)BROWN, Devon | (11)WARLEY, Avery |
| 03-07-11 | *PRESBYTERIAN COLLEGE | w 49-40 | 635 | (12)BROWN, Devon | (8)WARLEY, Avery |
| 03-11-11 | #vs Coastal Carolina | w 51-44 | 682 | (14)OMOTOLA, Tolu | (19)WARLEY, Avery |
| 03-12-11 | #at High Point | w 76-55 | 949 | (28)WARLEY, Avery | (13)WARLEY, Avery |
| 03-13-11 | #vs Gardner-Webb | 66-67 L | 602 | (19)ANTIC, Jelena | (16)WARLEY, Avery |
| 03-16-11 | ^at Charlotte | 56-62 L | 428 | (14)BROWN, Devon (14)WARLEY, Avery | (8)ANTIC, Jelena |

% = Sheraton Raleigh Wolfpack Invitational (Raleigh, N.C.)
 & = Terrapin Classic (College Park, Md.)
 # = Big South Women's Basketball Championship (High Point, N.C.)
 ^ = Postseason WNIT
 * = Big South Conference game

| Attendance Summary | Games | Attend | Avg/Game |
|---------------------------|--------------|---------------|-----------------|
| Home | 11 | 8821 | 802 |
| Away | 16 | 18633 | 1165 |
| Neutral | 6 | 10599 | 1766 |
| Total | 33 | 38053 | 1153 |

2010-11 Liberty Women's Basketball
Liberty Combined Team Statistics (as of Oct 05, 2011)
All games

| RECORD: | OVERALL | HOME | AWAY | NEUTRAL |
|----------------|----------------|-------------|-------------|----------------|
| ALL GAMES | 22-11 | 10-1 | 10-6 | 2-4 |
| CONFERENCE | 14-2 | 7-1 | 7-1 | 0-0 |
| NON-CONFERENCE | 8-9 | 3-0 | 3-5 | 2-4 |

| # | Player | gp-gs | min | avg | Total | | 3-Point | | F-Throw | | Rebounds | | | | pf | dq | a | to | blk | stl | pts | avg |
|----------------|--------------------|-------|------|------|----------|------|---------|------|---------|------|----------|-----|------|------|-----|----|-----|-----|-----|-----|------|------|
| | | | | | fg-fga | fg% | 3fg-fga | 3fg% | ft-fa | ft% | off | def | tot | avg | | | | | | | | |
| 40 | BROWN, Devon | 26-23 | 669 | 25.7 | 121-315 | .384 | 35-107 | .327 | 74-110 | .673 | 43 | 65 | 108 | 4.2 | 43 | 0 | 37 | 61 | 7 | 34 | 351 | 13.5 |
| 23 | WARLEY, Avery | 33-33 | 890 | 27.0 | 155-250 | .620 | 0-0 | .000 | 87-138 | .630 | 151 | 212 | 363 | 11.0 | 89 | 4 | 26 | 82 | 38 | 33 | 397 | 12.0 |
| 11 | ANTIC, Jelena | 31-30 | 880 | 28.4 | 118-286 | .413 | 17-69 | .246 | 64-93 | .688 | 66 | 129 | 195 | 6.3 | 57 | 1 | 72 | 84 | 9 | 42 | 317 | 10.2 |
| 22 | OMOTOLA, Tolu | 33-32 | 782 | 23.7 | 117-262 | .447 | 4-26 | .154 | 42-73 | .575 | 76 | 120 | 196 | 5.9 | 58 | 2 | 27 | 61 | 27 | 36 | 280 | 8.5 |
| 21 | FRAZIER, Emily | 33-30 | 770 | 23.3 | 43-127 | .339 | 20-48 | .417 | 38-56 | .679 | 18 | 55 | 73 | 2.2 | 57 | 0 | 85 | 93 | 3 | 33 | 144 | 4.4 |
| 25 | MORGAN, Dymond | 33-3 | 629 | 19.1 | 54-141 | .383 | 4-20 | .200 | 31-65 | .477 | 15 | 48 | 63 | 1.9 | 70 | 1 | 64 | 76 | 0 | 51 | 143 | 4.3 |
| 12 | DALE, Danika | 31-3 | 358 | 11.5 | 37-102 | .363 | 2-23 | .087 | 14-41 | .341 | 30 | 51 | 81 | 2.6 | 19 | 0 | 21 | 45 | 4 | 15 | 90 | 2.9 |
| 01 | WASHINGTON, LaKen | 29-0 | 296 | 10.2 | 24-64 | .375 | 14-36 | .389 | 12-21 | .571 | 15 | 17 | 32 | 1.1 | 28 | 0 | 10 | 31 | 1 | 16 | 74 | 2.6 |
| 32 | McLEOD, Rachel | 30-10 | 400 | 13.3 | 27-72 | .375 | 1-8 | .125 | 19-29 | .655 | 8 | 24 | 32 | 1.1 | 22 | 0 | 17 | 38 | 2 | 16 | 74 | 2.5 |
| 15 | BEECHER, Kylee | 26-0 | 411 | 15.8 | 19-63 | .302 | 3-9 | .333 | 18-30 | .600 | 28 | 45 | 73 | 2.8 | 34 | 0 | 15 | 29 | 3 | 6 | 59 | 2.3 |
| 24 | GARDNER, Jasmine | 23-1 | 200 | 8.7 | 10-45 | .222 | 0-0 | .000 | 9-17 | .529 | 31 | 31 | 62 | 2.7 | 25 | 0 | 3 | 31 | 4 | 7 | 29 | 1.3 |
| 30 | CAMPBELL, Brittany | 25-0 | 202 | 8.1 | 9-41 | .220 | 5-19 | .263 | 3-5 | .600 | 9 | 21 | 30 | 1.2 | 12 | 0 | 16 | 18 | 2 | 8 | 26 | 1.0 |
| 43 | MAINE, Kittery | 19-0 | 71 | 3.7 | 4-15 | .267 | 0-1 | .000 | 4-7 | .571 | 7 | 5 | 12 | 0.6 | 8 | 0 | 3 | 8 | 1 | 2 | 12 | 0.6 |
| 03 | LUNSFORD, Terika | 11-0 | 42 | 3.8 | 2-8 | .250 | 1-5 | .200 | 0-1 | .000 | 2 | 2 | 4 | 0.4 | 3 | 0 | 1 | 4 | 0 | 1 | 5 | 0.5 |
| Team | | | | | | | | | | | 67 | 53 | 120 | | | | 16 | | | | | |
| Total..... | | 33 | 6600 | | 740-1791 | .413 | 106-371 | .286 | 415-686 | .605 | 566 | 878 | 1444 | 43.8 | 525 | 8 | 397 | 677 | 101 | 300 | 2001 | 60.6 |
| Opponents..... | | 33 | 6600 | | 631-1807 | .349 | 175-644 | .272 | 341-506 | .674 | 385 | 639 | 1024 | 31.0 | 587 | - | 383 | 579 | 79 | 321 | 1778 | 53.9 |

| TEAM STATISTICS | LIBERTY | OPP | Date | Opponent | Score | Att. | |
|------------------------|----------------|------------|-------------|---------------------------|----------------------|-------------|------|
| SCORING | 2001 | 1778 | % 11-12-10 | vs Creighton | L 35-40 | 2043 | |
| Points per game | 60.6 | 53.9 | % 11-13-10 | vs College of Charleston | L 46-49 | 1291 | |
| Scoring margin | +6.8 | - | 11-16-10 | VIRGINIA UNION | w 71-19 | 802 | |
| FIELD GOALS-ATT | 740-1791 | 631-1807 | 11-20-10 | LAFAYETTE | w 64-52 | 384 | |
| Field goal pct | .413 | .349 | 11-22-10 | at No. 8/8 Texas A&M | L 49-81 | 3808 | |
| 3 POINT FG-ATT | 106-371 | 175-644 | 11-26-10 | at No. 2/3 Baylor | L 42-81 | 6492 | |
| 3-point FG pct | .286 | .272 | 11-30-10 | GLENVILLE STATE | w 93-75 | 631 | |
| 3-pt FG made per game | 3.2 | 5.3 | 12-05-10 | at James Madison | L 51-54 | 2149 | |
| FREE THROWS-ATT | 415-686 | 341-506 | 12-18-10 | at North Carolina Central | L 48-50 | 183 | |
| Free throw pct | .605 | .674 | 12-21-10 | at VCU | w 59-57 | 382 | |
| F-Throws made per game | 12.6 | 10.3 | & 12-28-10 | vs No. 17/17 St. John's | L 66-81 | 4433 | |
| REBOUNDS | 1444 | 1024 | & 12-29-10 | vs La Salle | w 73-53 | 1548 | |
| Rebounds per game | 43.8 | 31.0 | * 01-03-11 | at High Point | w 68-60 | 527 | |
| Rebounding margin | +12.7 | - | * 01-08-11 | at Presbyterian College | w 51-40 | 502 | |
| ASSISTS | 397 | 383 | * 01-09-11 | at UNC Asheville | w 61-44 | 287 | |
| Assists per game | 12.0 | 11.6 | 01-14-11 | at Longwood | w 75-71 | 350 | |
| TURNOVERS | 677 | 579 | * 01-17-11 | RADFORD | L 53-62 | 911 | |
| Turnovers per game | 20.5 | 17.5 | * 01-22-11 | CHARLESTON SOUTHERN | w 63-46 | 858 | |
| Turnover margin | -3.0 | - | * 01-24-11 | COASTAL CAROLINA | w 58-54 | 868 | |
| Assist/turnover ratio | 0.6 | 0.7 | * 01-29-11 | at Winthrop | w 70-33 | 525 | |
| STEALS | 300 | 321 | * 01-31-11 | at Gardner-Webb | w 68-56 | 531 | |
| Steals per game | 9.1 | 9.7 | * 02-05-11 | HIGH POINT | w 58-57 | 908 | |
| BLOCKS | 101 | 79 | * 02-12-11 | GARDNER-WEBB | w 56-51 | 1297 | |
| Blocks per game | 3.1 | 2.4 | * 02-14-11 | WINTHROP | w 72-38 | 523 | |
| ATTENDANCE | 8821 | 29232 | * 02-19-11 | at Radford | w 66-50 | 702 | |
| Home games-Avg/Game | 11-802 | 16-1165 | * 02-26-11 | at Coastal Carolina | w 64-44 | 306 | |
| Neutral site-Avg/Game | - | 6-1766 | * 02-28-11 | at Charleston Southern | L 51-54 | 512 | |
| Score by Periods | 1st | 2nd | Totals | * 03-04-11 | UNC ASHEVILLE | w 72-58 | 1004 |
| Liberty | 996 | 1005 | 2001 | * 03-07-11 | PRESBYTERIAN COLLEGE | w 49-40 | 635 |
| Opponents | 825 | 953 | 1778 | # 03-11-11 | vs Coastal Carolina | w 51-44 | 682 |
| | | | | # 03-12-11 | at High Point | w 76-55 | 949 |
| | | | | # 03-13-11 | vs Gardner-Webb | L 66-67 | 602 |
| | | | | ^ 03-16-11 | at Charlotte | L 56-62 | 428 |

% = Sheraton Raleigh Wolfpack Invitational (Raleigh, N.C.)
 & = Terrapin Classic (College Park, Md.)
 # = Big South Women's Basketball Championship (High Point, N.C.)
 ^ = Postseason WNIT
 * = Big South Conference game