

**2009-10 Liberty
Women's Basketball
Quick Facts**

General Information

Name of School..... Liberty University
City/Zip Lynchburg, Va. 24502
Founded 1971
Enrollment 11,311
Nickname..... Lady Flames
School Colors Red, White & Blue
Home Arena..... Vines Center
Capacity..... 8,085
Affiliation..... NCAA Division I
Conference..... Big South
Founder..... Dr. Jerry Falwell
Chancellor..... Jerry Falwell, Jr.
Director of Athletics..... Jeff Barber
Athletics Dept. Phone..... (434) 582-2100

Women's Basketball Information

Head Coach..... Carey Green
Alma Mater Coastal Carolina, '79
Record at School 257-82 (11th Year)
Career Record..... Same
Assistant Coaches
..... Alexis Sherard (St. Michael's, '93)
..... Heather Stephens (Wyoming, '03)
..... Andy Bloodworth (Calvin, '98)
Certified Athletic Trainer
..... Madeline Bosek

History

First Season of Basketball..... 1975-76
All-Time Record..... 528-410
NCAA Tournament Appearances..... 12
Last NCAA Appearance..... 2009
Opponent..... Louisville
Result..... L/42-62 (First Round)
Final/Highest Ranking N/A
Final 2008-09 Record..... 24-9
Conference Record/Finish..... 15-1/First
Starters Returning/Lost..... 2/3
Letterwinners Returning/Lost..... 7/7
Newcomers..... 6

Athletics Communications Info.

Asst. AD - Communications
..... Todd Wetmore
SID Office Phone..... (434) 582-2292
Cell Phone..... (434) 841-8974
Email Address..... twetmore@liberty.edu
Assoc. Director Ryan Bomberger
Cell Phone (434) 221-5576
Email Address... rbomberger@liberty.edu
Asst. Director..... Paul Carmany
Cell Phone (434) 221-5575
Email Address... pjcarmany@liberty.edu
Asst. Director..... Eric Brown
Cell Phone (434) 221-8817
Email Address..... eqbrown@liberty.edu
Grad. Assistant..... Jennifer Shelton
Cell Phone..... (828) 638-3876
Email Address... jbskelton2@liberty.edu
WBB Contact..... Paul Carmany
Ath. Comm. Fax..... (434) 582-2076
Website..... LibertyFlames.com

Media Information

Radio

Station WWMC "The Light" (90.9 FM)
Play-By-Play Jamie Hall
Color..... Josh Wood

Television

Station None
Play-By-Play..... N/A
Color..... N/A

Game No. 26 - Feb. 27, 2010



**Liberty LADY FLAMES
(20-5, 10-2 Big South)**

at



**UNC Asheville BULLDOGS
(7-19, 2-11 Big South)**

Asheville, N.C. - Justice Center - 2 p.m.

The Game

Liberty (20-5, 10-2 Big South) will open its final road trip of the regular season with a Saturday afternoon contest at UNC Asheville (7-19, 2-11 Big South). Tipoff is scheduled for 2 p.m. at the Justice Center, as the Lady Flames aim to complete a season sweep of the Bulldogs. Liberty defeated UNC Asheville by an 82-40 count, Jan. 18 at the Vines Center.

Liberty has been victorious in each of its last 12 meetings with UNC Asheville at the Justice Center and is 29-1 in its last 30 contests against the Bulldogs overall.

Last Time Out

Liberty redshirt sophomore Avery Warley made all nine of her field goal attempts, Monday versus Charleston Southern, setting a Vines Center single-game field goal percentage record. Her effort, which included 22 points, 10 rebounds and three steals, helped the Lady Flames end the Buccaneers' four-game winning streak with a 66-56 triumph at the Vines Center. Teammate Devon Brown added 20 points and a game-high 12 boards.

On Deck

The Lady Flames will play their final road game of the 2009-10 regular season, Monday night at Presbyterian College. Tipoff at the Templeton Center is slated for 7 p.m.

Liberty is 4-0 all-time versus the Blue Hose, including a 73-27 win at the Vines Center on Jan. 16.

Lady Flames On The Air

All Lady Flames basketball games may be heard LIVE on WWMC 90.9 FM "The Light." Jamie Hall, in the midst of his 16th year of broadcasting Lady Flames basketball, is once again handling the courtside play-by-play duties for road games. Nick Pierce and Josh Wood serve as the primary commentators for home contests.

Liberty's Probable Starters

No.	Name	Pos.	Ht.	Yr.	PPG	RPG	Other Stats
21	Amber Mays	G	5-6	Sr.	8.5	1.6	4.1 apg
32	Rachel McLeod	G	5-10	Jr.	5.2	2.3	1.7 apg
40	Devon Brown	G	5-10	R-Fr.	16.7	8.8	2.0 spg
15	Kylee Beecher	F	6-4	So.	6.8	4.0	74.0 FT%
23	Avery Warley	F	6-3	R-So.	10.5	8.4	59.2 FG%

Reserves

1	LaKendra Washington	G	5-8	Fr.	4.3	1.6	1.3 spg
11	Jelena Antic	F	6-2	Fr.	7.7	5.2	1.6 apg
12	Danika Dale	G	6-1	So.	4.1	3.2	1.0 apg
25	Dymond Morgan	G	5-7	Jr.	4.0	1.6	1.5 spg
30	Brittany Campbell	G	6-0	R-Fr.	--	--	--
43	Kittery Maine	F	6-4	Jr.	--	--	--
54	Carra Coy	F	6-6	Fr.	1.1	1.6	0.4 bpg

2009-10 Liberty Women's Basketball Schedule/Results

Overall: 20-5
Big South: 10-2

11/13 WINSTON-SALEM ST.* W, 71-26
11/17 UNC GREENSBORO^ W, 60-42

Navy Classic (Annapolis, Md.)

11/20 vs. Tulane W, 63-52
11/21 at Navy W, 55-43

11/28 at Lafayette W, 90-55

12/1 JAMES MADISON^ L, 50-60
12/5 GLENVILLE STATE^ W, 86-45
12/15 at Auburn L, 64-70

Marriott Cavalier Classic (Charlottesville, Va.)

12/28 vs. Cornell W, 70-40
12/29 at No. 21/23 Virginia L, 54-63

1/2 at Gardner-Webb* L, 65-70
1/5 N.C. A&T^ W, 57-51
1/9 WINTHROP*^ W, 67-38
1/12 LONGWOOD^ W, 78-55
1/16 PRESBYTERIAN*^ W, 73-27
1/18 UNC ASHEVILLE*^ W, 82-40
1/23 at Charleston So.* W, 65-52
1/25 at Coastal Carolina* W, 57-38
1/30 at High Point* W, 75-62

2/1 at Radford* W, 63-45
2/4 N.C. CENTRAL^ W, 64-44
2/8 GARDNER-WEBB* & L, 56-59
2/15 at Winthrop* W, 52-18
2/20 COASTAL CAR.*^ W, 57-55
2/22 CHARLESTON SO.*^ W, 66-56
2/27 at UNC Asheville* 2 p.m.

3/1 at Presbyterian* 7 p.m.
3/5 RADFORD*^ 7 p.m.
3/8 HIGH POINT*^ 7 p.m.

Big South WBB Championship (High Point, N.C.)

3/12 Quarterfinals TBA
3/13 Semifinals# 1/3 p.m.
3/14 Championship Game# 2 p.m.

NCAA Tournament

3/20-21 First Round TBA
3/22-23 Second Round TBA

Home Games in BOLD CAPS

* - Big South Conference Game
All times are Eastern Standard Time
^ - Broadcast on
Flames Sports Network
& - Broadcast on SportSouth/MASN

Team Statistical Leaders

Total Points

Devon Brown - 418/16.7 ppg
Avery Warley - 263/10.5 ppg

Total Rebounds

Devon Brown - 220/8.8 rpg
Avery Warley - 211/8.4 rpg

Total Assists

Amber Mays - 103/4.1 apg
Rachel McLeod - 43/1.7 apg

Total Steals

Amber Mays - 57/2.3 spg
Devon Brown - 49/2.0 spg

Head Coach Carey Green

Record at Liberty: 257-82 (11th Year)
Career Record: Same

9 Big South Championships: 2000, 2001, 2002, 2003, 2004, 2005, 2006, 2008, 2009
8 NCAA Appearances: 2000, 2001, 2002, 2003, 2004, 2005 (Sweet 16), 2006, 2008, 2009
5-time Big South Coach of the Year: 2000, 2003, 2006, 2008, 2009
3-time VaSID State Coach of the Year: 2003, 2005, 2006

Liberty head women's basketball coach Carey Green, in his 11th season with the Lady Flames, has instilled quite a winning tradition during his tenure at the institution. His teams have averaged more than 23 victories per year, putting his name alongside the nation's premier women's basketball coaches.

Green has accumulated a 257-82 record on the Liberty bench, good for a winning percentage of .758. He currently ranks ninth all-time among NCAA Division I women's basketball coaches in winning percentage, ahead of renowned coaching names like Rutgers' Vivian Stringer, LSU's Van Chancellor and North Carolina's Sylvia Hatchell.

More importantly, Liberty has won the Big South Tournament title and advanced to the NCAA Tournament nine times with Green as head coach. Liberty has totaled 23 or more victories during eight of those years, including the 2004-05 season, which saw the Lady Flames reach the Sweet 16 for the first time in program history.

Green has actually been to the postseason on 21 occasions as a women's basketball coach, a span which includes a dozen years as an assistant coach at Clemson. In all but one of the 21 appearances, he has experienced the NCAA Tournament.

Last season, Green earned his unprecedented fifth Big South Coach of the Year award, after guiding a team decimated by ACL injuries to a 24-9 record and its 12th NCAA Tournament appearance in the last 13 years. The Lady Flames also won the Hokie Hardwood Classic, claiming their first-ever victory over Virginia Tech in the tournament championship game.

At season's end, Green saw his second player selected in the WNBA Draft, as Megan Frazee was taken in the second round by the San Antonio Silver Stars. She then played part of her rookie season alongside 2005 Liberty alum Katie (Feenstra) Mattera in San Antonio.

Rebounding and defense have always been staples of Green-coached teams, and the 2008-09 Lady Flames were no exception. Liberty outrebounded opponents by an average of 12.7 caroms per game, ranking second nationally. The Lady Flames have now been listed among the nation's top five teams in rebounding margin for six straight years. Liberty led the nation in the category in 2003-04 and 2004-05. The Lady Flames also ended the season ranked in the top 10 nationally for scoring defense (second, 52.6 ppg) and field goal percentage defense (sixth, .345).

A key late-season conference victory over High Point in 2006 made Green the winningest coach in Big South Conference history. He is also Liberty's career wins leader.

The 2004-05 year was a special one on Liberty Mountain, for many reasons. A senior-laden Lady Flames team recorded upset wins over No. 4 seed Penn State (78-70) and No. 5 seed DePaul (88-79) in the first two rounds of the NCAA Tournament, becoming just the second team ever to advance to the Sweet 16 as a No. 13 seed. The Lady Flames ended the season with their highest national ranking to date, No. 21 (USA Today/ESPN).

Green's track record shows he has the ability to meet those challenges. The Lady Flames have recorded two wins over UNLV, Virginia and West Virginia and solo victories over No. 19 DePaul, No. 17 Kansas State, No. 25 Penn State, Virginia Tech and Wake Forest during Green's tenure. The upset victory over No. 25 Virginia in 2003 marked Liberty's first win over a Top 25 team.

His record against conference foes is equally impressive. He led the Lady Flames on a Big South record 47-game winning streak and currently owns a .911 (164-16) winning percentage against conference teams. Green has marched through conference play with one or fewer setbacks seven times, while guiding the Lady Flames to two undefeated conference seasons.

Big South Conference Update

(Records Updated Through 2/22)

Overall Standings

	W	L	Pct.
Gardner-Webb	24	3	.889
Liberty	20	5	.800
Coastal Carolina	15	10	.600
High Point	16	11	.593
Charleston So.	15	11	.577
Winthrop	10	16	.385
UNC Asheville	7	19	.269
Radford	5	19	.208
Presbyterian	5	21	.192

Conference Standings

	W	L	Pct.
Gardner-Webb	13	1	.929
Liberty	10	2	.833
High Point	9	5	.643
Charleston So.	7	6	.538
Coastal Carolina	6	7	.462
Winthrop	4	8	.333
Radford	4	9	.308
Presbyterian	3	9	.250
UNC Asheville	2	11	.154

Upcoming Schedule

Saturday, Feb. 27

Liberty at UNC Asheville	2 p.m.
Charleston So. at Gardner-Webb	3 p.m.
High Point at Winthrop	4 p.m.
Radford at Presbyterian	5 p.m.

Monday, March 1

Coastal Carolina at Winthrop	7 p.m.
Radford at UNC Asheville	7 p.m.
Liberty at Presbyterian	7 p.m.

Friday, March 5

Gardner-Webb at Coastal Car.	7 p.m.
Winthrop at UNC Asheville	7 p.m.
Presbyterian at Charleston So.	7 p.m.
Radford at Liberty	7 p.m.

Monday, March 8

Winthrop at Charleston So.	7 p.m.
High Point at Liberty	7 p.m.
Presbyterian at Coastal Car.	7 p.m.

End Regular Season

Scouting UNC Asheville

Saturday's game begins a three-game, season-closing homestand for UNC Asheville at the Justice Center. The Bulldogs dropped all eight of their road Big South contests, but they have won two of five home conference tilts, claiming wins over Coastal Carolina and Presbyterian College. Overall, UNC Asheville is 1-6 in its last seven games, entering Saturday's contest.

A pair of juniors are leading the Bulldogs this season, including 5-10 forward Lindsey Montgomery. She paces UNC Asheville in both points (12.4 ppg) and rebounds (10.3 rpg), while leading the Big South in both rebounds and double-doubles (10). Montgomery is looking to become the first Big South Conference player since Liberty's Katie Feenstra in 2004-05 to average a double-double for an entire season. Okoli, a 5-7 guard, chips in 8.3 ppg and 5.1 rpg, ranking second on the team in both categories.

UNC Asheville outrebounds opponents by an average of 4.0 boards per contest. Only Liberty owns a better rebounding margin among Big South Conference squads.

The Coaching Matchup

Liberty Head Coach Carey Green is in his 11th season with the Lady Flames, and has led his team to nine Big South titles. A five-time Big South Coach of the Year, Green owns a 257-82 career record and is the all-time wins leader at Liberty and among Big South women's basketball coaches. His career winning percentage (.758) ranked ninth all-time among NCAA Division I women's basketball coaches at the season's outset. Green is 24-1 all-time against UNC Asheville.

Betsy Blose is 105-128 in her eighth season as UNC Asheville's head coach. Her overall record as a collegiate head coach stands at 219-205 in 15 years, which includes seven campaigns at Shepherd University in West Virginia. Blose, who began her coaching career at Altavista High School, just south of Lynchburg on Route 29, led the Bulldogs to the 2007 Big South title. She owns a 1-16 record coaching versus the Lady Flames.

Liberty-UNC Asheville Series Notes

Liberty is 39-7 all-time versus UNC Asheville, including victories in 29 of its last 30 meetings with the Bulldogs.

The Lady Flames have won 12 straight contests against UNC Asheville at the Justice Center. The last time the Bulldogs defeated Liberty in Asheville was Feb. 8, 1997, when UNC Asheville claimed a 68-59 decision.

The Bulldogs' most recent victory over the Lady Flames was a 54-51 win at the Vines Center on Feb. 24, 2007. UNC Asheville made three free throws in the final minute to spoil Liberty's Senior Day. The victory helped propel the Bulldogs to the Big South title two weeks later at the Justice Center.

Liberty defeated UNC Asheville, 82-40, Jan. 18 at the Vines Center, in the teams' first matchup this season. Four Lady Flames scored in double figures, led by Kylee Beecher and Amber Mays with 14 points apiece. Liberty won the rebounding battle, 49-27, and scored 33 points off of UNC Asheville turnovers. Lindsey Montgomery paced the Bulldogs in both points (10) and rebounds (8).

Liberty.....Statistical Comparison..... UNC Asheville

20-5	Record	7-19
47.7	Field Goal Percentage	35.8
34.1	Opponent Field Goal Percentage	40.9
30.2	Three-Point Field Goal Percentage	29.3
2.6	Three-Pointers Made Per Game	4.4
63.9	Free Throw Percentage	69.8
40.5	Rebound Average	39.8
25.7	Opponent Rebound Average	35.9
+14.8	Rebound Differential	+4.0
65.6	Points Per Game	57.6
482	Points Allowed Per Game	65.1
+17.4	Point Differential	-7.5



NCAA Top 25 Polls

AP Top 25

1) Connecticut (27-0).....	1,000 pts.
2) Stanford (25-1)	959
3) Nebraska (25-0)	918
4) Tennessee (24-2)	882
5) Xavier (22-3).....	809
6) Duke (23-4)	791
7) Notre Dame (23-3)	724
8) West Virginia (24-3).....	706
9) Florida State (23-4).....	676
10) Ohio State (26-4).....	663
11) Oklahoma (19-7).....	592
12) Texas A&M (19-6).....	514
13) Georgetown (22-4)	493
14) Texas (19-7)	457
15) Iowa State (20-5).....	438
16) Kentucky (23-4).....	422
17) Baylor (19-7).....	372
18) St. John's (21-5).....	309
19) Gonzaga (23-4)	236
20) LSU (18-7).....	185
21) Virginia (20-6).....	176
22) Georgia Tech (21-7)	129
23) Oklahoma State (18-8).....	118
24T) Georgia (20-7).....	114
24T) Hartford (23-3).....	114

2009-10 Opponents in Bold

ESPN/USA Today Coaches Top 25

1) Connecticut (27-0).....	775 pts.
2) Stanford (25-1)	742
3) Nebraska (25-0)	715
4) Tennessee (25-2)	679
5) Xavier (22-3).....	646
6) Duke (23-4)	608
7) West Virginia (24-3).....	580
8) Notre Dame (23-3)	558
9) Florida State (24-4)	533
10) Oklahoma (19-7)	467
11) Georgetown (22-4)	460
12) Ohio State (26-4).....	441
13) Iowa State (20-5).....	373
14) Kentucky (23-4).....	367
15) Texas A&M (19-7).....	304
16) Texas (19-7)	293
17) Baylor (20-7).....	289
18) Virginia (20-7).....	222
19) St. John's (21-5).....	201
20) Gonzaga (23-4)	188
21) Oklahoma State (18-8).....	140
22) Vanderbilt (19-8).....	120
23) Hartford (23-3).....	119
24) Georgia (20-7).....	64
25) Michigan State (19-8).....	26

2009-10 Opponents in Bold

Liberty Versus the Big South Conference

Liberty has enjoyed a considerable amount of success versus Big South Conference opposition, since joining the league for the 1991-92 season. The Lady Flames have won the conference tournament 12 times and captured 11 regular-season championships.

Liberty is 237-69 (.775) all-time against Big South opponents, including 201-63 in regular-season matchups and 36-6 in Big South Championship tilts. During Carey Green's tenure as head coach, the Lady Flames are 164-16 (.911) when facing Big South foes.

Fabulous in February

Liberty has won 96 of its last 102 games played during the month of February, dating back to the 1997 Big South Championship. The only teams to defeat the Lady Flames in February since then are High Point (three times), Gardner-Webb, UNC Asheville and Winthrop.

The Lady Flames own a 177-122 all-time mark during the year's second month, including a 77-6 record under Carey Green. Liberty, which went 6-0 in February a season ago and is 5-1 this February, has seven games scheduled this month.

Taking On the Tar Heel Staters

Saturday's game will be Liberty's ninth contest against a team from North Carolina this season. The Lady Flames have gone 6-2 versus Tar Heel State foes in 2009-10, with both setbacks coming to Gardner-Webb.

Accurate Avery

Redshirt sophomore Avery Warley shot a perfect 9-for-9 from the field, Monday evening against Charleston Southern, setting a new Vines Center record for single-game field goal percentage. Former Lady Flame Moriah Frazee previously held the record, after shooting 8-for-8 versus Virginia Union on Nov. 30, 2007.

The record-setting performance propelled Warley to the top of the Big South Conference field goal percentage chart, at .592 on the season.

Warley has made nine straight field goals entering Saturday's game, leaving her three shy of a new personal best. Last season, the Washington, D.C., native connected on 11 consecutive field goals between Feb. 9 and Feb. 21.

12th Time with 20

Liberty's 66-56 victory over Charleston Southern on Monday was its 20th win this season. The Lady Flames have now won 20 or more games 12 times in the last 14 campaigns.

11 in a Row

The Lady Flames' 66-56 triumph over Charleston Southern on Monday boosted Liberty's conference record to 10-2. Liberty has won 10 or more Big South games 11 seasons in a row.

Coming Through in the Close Ones

Liberty had lost five of its first six close contests this year. The Lady Flames have now won back-to-back games decided by 10 or fewer points, though, defeating Coastal Carolina 57-55 on Feb. 20 and taking down Charleston Southern by a 66-56 score on Feb. 22.

The Game is Decided by the Opening Tip

In a bit of a statistical oddity, Liberty is a perfect 15-0 when Avery Warley wins the opening tip this season. When the opponent takes the jump ball, however, the Lady Flames are only 5-5.

Dominating Defensive Effort

The Lady Flames enjoyed a record-setting defensive performance Feb. 15 at Winthrop. Liberty established new program records for fewest points allowed (18) and lowest opponent field goal percentage (.119) during its 52-18 triumph.

Liberty also came just two points away from equaling the fewest points ever allowed in a game between two Division I women's basketball teams.

**Liberty in the
Big South Stats**
(Through Games of 2/22)

Team

Scoring Offense (4th)	65.6 ppg
Scoring Defense (1st).....	48.2 ppg
Scoring Margin (1st)	+17.4 ppg
Free Throw Pct. (8th).....	.639
Field Goal Pct. (1st).....	.477
Field Goal Pct. Defense (1st) ..	.341
3-Pt. FG Pct. (5th)302
3-Pt. FG Pct. Defense (1st).....	.274
3-Pt. FG Made (9th).....	2.6/game
Rebounds (1st).....	40.5 rpg
Opp. Rebounds (1st)	25.7 rpg
Rebounding Margin (1st).....	+14.8 rpg
Offensive Rebounds (1st).....	16.0 rpg
Defensive Rebounds (6th).....	24.5 rpg
Blocked Shots (7th)	2.6 bpg
Assists (3rd).....	13.0 apg
Steals (1st)	11.3 spg
Turnover Margin (6th)	+0.84
Asst./TO Ratio (4th).....	0.64

Individual

Scoring

Devon Brown (1st).....	16.7 ppg
Avery Warley (14th).....	10.5 ppg
Amber Mays (24th)	8.5 ppg

Rebounding

Devon Brown (2nd).....	8.8 rpg
Avery Warley (3rd).....	8.4 rpg

Offensive Rebounds

Avery Warley (2nd).....	3.8 rpg
Devon Brown (6th).....	2.6 rpg
Kylee Beecher (15th).....	1.8 rpg

Defensive Rebounds

Devon Brown (1st).....	6.2 rpg
Avery Warley (5th).....	4.6 rpg

Field Goal Pct.

Avery Warley (1st)592
Devon Brown (4th).....	.471

Assists

Amber Mays (2nd).....	4.1 apg
-----------------------	---------

Free Throw Pct.

Devon Brown (4th).....	.735
------------------------	------

Steals

Amber Mays (3rd).....	2.3 spg
Devon Brown (8th).....	2.0 spg
Dymond Morgan (T-15th)	1.5 spg

Three-Point FG Made

Devon Brown (12th).....	1.2/game
-------------------------	----------

Blocked Shots

Avery Warley (8th).....	0.7 bpg
Devon Brown (12th).....	0.6 bpg

One Milestone Down, One to Go

Redshirt sophomore Avery Warley reached a career milestone during the Feb. 15 game at Winthrop. With her putback hoop 13:42 before halftime, Warley became the 50th player in program to score 500 career points.

Warley is also closing in on the 500-rebound milestone, as she has collected 467 boards during the first 58 games of her career. Only 20 Lady Flames have ever tallied 500 career rebounds.

Bravo to Brown

Devon Brown won the Big South Player of the Week award on Feb. 9, for the second time this season. She averaged 24.5 ppg and 11.0 rpg during the Lady Flames' road wins at High Point and Radford.

Brown is one of three conference players to capture a pair of Big South Player of the Week awards so far in 2009-10. It also marked the fourth consecutive week a Liberty player received a conference award. Jelena Antic captured back-to-back Big South Freshman of the Week plaudits on Jan. 12 and 19, while Avery Warley was recognized as Big South Player of the Week on Jan. 26.

20/20 Vision

Devon Brown (29 points) and Avery Warley (26 points) both set new career highs for points during a Jan. 30, 75-62 victory at High Point. In the process, the duo became the first pair of Lady Flames to score 20 points in the same game since Megan Frazee had 22 points and sister Moriah Frazee added 20 in a 76-57 triumph over High Point on Jan. 29, 2008.

Brown and Warley were at it again, Monday against Charleston Southern. Warley paced all players with 22 points, while Brown added 20 markers of her own against the Buccaneers.

National Leader

Liberty, which has outrebounded 24 of its 25 opponents this season, ranks as the nation's No. 1 team in rebound margin, including games played through Feb. 21. The Lady Flames, who own a +14.8 rebound margin, have ranked among the nation's top five rebounding squads for six consecutive seasons. Liberty led the nation in rebound margin in back-to-back years, 2003-04 and 2004-05.

First-Half Defense

Points have come at a premium for Liberty's opponents during the first half this season. The Lady Flames limited Winthrop to 10 first-half markers on Feb. 15, the eighth time Liberty has held its opponent under 20 points in the opening period. The Lady Flames have gone on to win all eight contests.

Only three of Liberty's first 25 opponents have managed to score 30 points during the opening 20 minutes of play. The Lady Flames are yielding an average of just 23.2 points in the first half of games in 2009-10.

No Triples? No Problem

Liberty only made one three-pointer during its win over Charleston Southern on Monday, shooting 1-8 from behind the arc. It was the ninth time this season that the Lady Flames have connected on either zero or one triples in a contest. Liberty is 8-1 in those games, despite its lack of three-point shooting.

70 is the Magic Number

Liberty is 8-0 this season when scoring at least 70 points in a game, extending a lengthy streak. The Lady Flames have now won 90 consecutive games when reaching the 70-point plateau offensively.

No. 24 Boston College was the most recent team to defeat Liberty when the Lady Flames tallied 70 points. The Eagles dealt the Lady Flames a 74-70 overtime loss, Dec. 6, 2003 at the Brown Classic.

Liberty has not dropped a game when scoring 70 points in regulation since Dec. 4, 2002. That day, the Lady Flames fell at Richmond by an 88-74 count.

Miscellaneous Stats For the 2009-10 Lady Flames

Team Scoring Leaders

Devon Brown	14 times
Avery Warley	6 times
Jelena Antic	3 times
Amber Mays	3 times
Kylee Beecher	1 time
Danika Dale	1 time
LaKendra Washington	1 time

20-Point Games

Devon Brown	7 times
Avery Warley	2 times
LaKendra Washington	1 time

Team Rebounding Leaders

Devon Brown	13 times
Avery Warley	10 times
Jelena Antic	3 times
Danika Dale	1 time

10-Rebound Games

Devon Brown	11 times
Avery Warley	10 times
Jelena Antic	2 times

Team Assist Leaders

Amber Mays	17 times
Rachel McLeod	6 times
Devon Brown	4 times
Jelena Antic	3 times
Dymond Morgan	2 times
Kylee Beecher	1 time
Danika Dale	1 time
Avery Warley	1 time

5-Assist Games

Amber Mays	9 times
Dymond Morgan	2 times
Rachel McLeod	1 time

Team Steal Leaders

Devon Brown	9 times
Amber Mays	9 times
Dymond Morgan	6 times
LaKendra Washington	6 times
Kylee Beecher	3 times
Rachel McLeod	3 times
Avery Warley	2 times
Danika Dale	1 time

3-Steal Games

Amber Mays	10 times
Devon Brown	9 times
Dymond Morgan	7 times
LaKendra Washington	6 times
Avery Warley	3 times
Jelena Antic	2 times
Danika Dale	2 times
Rachel McLeod	2 times
Kylee Beecher	1 time

Team Blocked Shot Leaders

Avery Warley	11 times
Devon Brown	10 times
Danika Dale	6 times
Carra Coy	5 times
Kylee Beecher	3 times
LaKendra Washington	2 times
Jelena Antic	1 time
Amber Mays	1 time

3-Block Games

Avery Warley	2 times
--------------	---------

Including Ties

Road Winning Streak

Liberty enters this weekend's two-game road swing on a five-game road winning streak. The Lady Flames have not lost a game away from the Vines Center since Jan. 2, when they lost, 70-65, at Gardner-Webb.

During the streak, Liberty has outscored its opponents by an average of 19.4 points per game (62.4-43.0) and Avery Warley is averaging a double-double (13.4 ppg, 11.0 rpg).

Big Wins, Tight Losses

The Lady Flames' 20 victories this season have come by an average of 23.4 points. Liberty's tightest win was a 57-55 home victory over Coastal Carolina on Feb. 20.

Meanwhile, Liberty has lost its five games by a total of 33 points. James Madison posted the widest margin of victory over the Lady Flames, defeating Liberty 60-50, Dec. 1 at the Vines Center.

Double-Double x 2

Before Jan. 12, the Lady Flames had not seen a pair of players record double-doubles in the same game since Nov. 24, 2007. However, Liberty has accomplished the feat five times in its last 12 games.

Longwood (Jan. 12): Jelena Antic (19 pts., 10 rebs.) & Devon Brown (16 pts., 13 rebs.)
Coastal Carolina (Jan. 25): D. Brown (17 pts., 10 rebs.) & A. Warley (15 pts., 12 rebs.)
High Point (Jan. 30): Devon Brown (29 pts., 11 rebs.) & Avery Warley (26 pts., 14 rebs.)
Gardner-Webb (Feb. 8): D. Brown (13 pts., 13 rebs.) & A. Warley (15 pts., 10 rebs.)
Charleston So. (Feb. 22): D. Brown (20 pts., 12 rebs.) & A. Warley (22 pts., 10 rebs.)

Tournament Tested

Liberty has played in a pair of tournaments this season, the Navy Classic (Nov. 20-21) and the Marriott Cavalier Classic (Dec. 28-29). The Lady Flames won the Navy Classic, while finishing second at this week's Marriott Cavalier Classic.

Liberty has won four regular-season tournament championships during the last three years, a list which also includes the 2008 National City Xavier Invitational, the 2008 UNLV Lady Rebel Christmas Classic and the 2009 Hokie Hardwood Classic.

Wanted for Theft

Liberty has employed an aggressive, trapping defense this season, helping the Lady Flames pace the Big South with 11.3 steals per contest. Liberty has tallied double-digit steals 18 times in its first 25 games of the year, after doing so only nine times during the entire 2008-09 campaign. Leading the way is senior Amber Mays, who has accounted for 57 of the Lady Flames' 282 thefts.

The Container is Half Full

This season, the Lady Flames are 10-0, when shooting 50 percent or higher from the field. Liberty is now 69-0 under head coach Carey Green, when the Lady Flames sink at least half of their field goals.

Painting a Masterpiece

Last season, Liberty regularly controlled the area around the basket, outscoring 29 of 33 opponents in the "points in the paint" statistical category.

This year, the Lady Flames are off to an outstanding start in racking up "points in the paint" once again. Liberty has outscored all 25 opponents inside the paint in 2009-10, by an average margin of 24.1 points (39.5 to 15.4).

14 x 10 for No. 40

Redshirt freshman Devon Brown scored 20 points during Monday's game versus Charleston Southern, putting her in double figures for the 14th straight game. Gardner-Webb was the last opponent to hold the Big South's leading scorer under 10 points, limiting Brown to nine tallies on Jan. 2.

2009 graduate Megan Frazee set the school record by scoring in double figures 68 straight times (Jan. 27, 2007 through March 15, 2009).

Liberty's Record ...

When Liberty controls the tip	15-0
When opponent controls the tip.....	5-5
Played at home.....	11-2
Played on the road	7-3
Played at a neutral site	2-0
Played a team with a .500+ record.....	10-5
Played a team with a .500 record.....	2-0
Played a team with a below .500 record.....	8-0
When Liberty leads at the half	17-1
When opponent leads at the half.....	3-3
When there is a tie at the half.....	0-1
When Liberty leads with 5:00 left.....	20-1
When opponent leads with 5:00 left	0-4
When there is a tie with 5:00 left	0-0
When Liberty leads with 1:00 left.....	20-0
When opponent leads with 1:00 left	0-4
When there is a tie with 1:00 left	0-1
When Liberty outrebounds opponent	20-4
When opponent outrebounds Liberty	0-1
When the teams' rebound totals are equal...	0-0
When Liberty shoots 50% or better (FG)....	10-0
When Liberty shoots less than 50% (FG)...	10-5
When Liberty outshoots its opponents	19-2
When opponents outshoot Liberty	1-3
When the teams shoot the same pct	0-0
When Liberty shoots more 3-pointers.....	4-1
When opponent shoots more 3-pointers	16-4
When same amount of 3-pointers shot.....	0-0
When Liberty shoots more free throws	18-1
When opponent shoots more free throws.....	2-4
When same number of free throws taken.....	0-0
When opponent shoots 50% or better (FG)...	0-1
When opponent shoots less than 50% (FG)...	20-4
When Liberty has more turnovers	7-3
When opponent has more turnovers	10-2
When turnovers are the same	3-0
When Liberty blocks more shots	12-2
When opponent blocks more shots	4-2
When blocks are the same	4-1
When Liberty has more steals	16-4
When opponent has more steals.....	3-1
When steals are the same.....	1-0
When Liberty bench outscores opponent...	13-1
When opponent bench outscores Liberty	7-4
When both benches score the same	0-0
When Liberty scores 50 or fewer points	0-1
When Liberty scores 51-60 points	6-2
When Liberty scores 61-70 points	7-2
When Liberty scores 71-80 points	4-0
When Liberty scores 81 or more points.....	3-0
When the game is decided by 1-5 points	1-2
When the game is decided by 6-10 points	2-3
When the game is decided by 11+ points...	17-0
November Games	5-0
December Games	2-3
January Games	8-1
February Games.....	5-1
March Games	0-0
Sunday	0-0
Monday	6-1
Tuesday.....	3-3
Wednesday.....	0-0
Thursday.....	1-0
Friday.....	2-0
Saturday	8-1
When wearing white uniforms	13-2
When wearing red uniforms.....	2-0
When wearing blue uniforms.....	5-3

All-Time Winningest Coaches

Through 10 seasons at Liberty, head coach Carey Green remains in elite company. He ranks as the ninth-winningest NCAA Division I women's basketball coach of all time, entering the 2009-10 campaign with a .755 career winning percentage. Here is a look at the top 15 coaches on the all-time list.

Coach, Team(s)	Yrs.	Won	Lost	Pct.
1) Leon Barmore, Louisiana Tech	20	576	87	.867
2) Geno Auriemma, Connecticut	24	696	122	.851
3) Pat Summitt, Tennessee	35	1,005	193	.839
4) Tara VanDerveer, Idaho, Ohio St., Stanford	30	757	193	.797
5) Bill Sheahan, Mt. St. Mary's	17	372	104	.782
6) Robin Selvig, Montana	31	725	204	.780
7) Gail Goestenkors, Duke, Texas	17	439	124	.780
8) Wes Moore, Maryville, F. Marion, Chattanooga	20	466	132	.779
9) Carey Green, Liberty	10	237	77	.755
10) Andy Landers, Georgia	30	725	239	.752
11) Marsha Sharp, Texas Tech	24	571	189	.751
12) C. Vivian Stringer, Cheyney, Iowa, Rutgers	38	825	280	.747
13) Jody Conradt, Sam Houston St., UTA, Texas	38	900	309	.744
14) Sylvia Hatchell, F. Marion, North Carolina	34	812	282	.742
15) Van Chancellor, Mississippi, LSU	21	489	171	.741

Longest-Tenured Assistant Coaches

The 2009-10 season is Heather Stephens' seventh campaign as an assistant coach on Carey Green's coaching staff. This season, she snapped a tie with Jeri (Wiley) Porter as the longest-tenured assistant coach in Liberty women's basketball history. Porter is now the head coach at George Mason.

The Lady Flames have gone 166-50 and won five Big South titles during Stephens' tenure and made the "Sweet 16" of the 2005 NCAA Tournament.

Same Number, New Face

A new Lady Flame is wearing No. 40 this year, after Megan Frazee donned the number for the last four seasons. Among many other accomplishments and accolades, Frazee graduated as the No. 2 scorer (1,883 points) and No. 3 rebounder (951 rebounds) in program history, leaving some very big shoes to fill.

Liberty's new No. 40, Devon Brown, has worn the number proudly so far. The redshirt freshman from Waynesboro, Va. is averaging a Big South-high 16.7 ppg and 8.8 rpg, pacing the Lady Flames in both categories. No freshman has finished the year as the conference's leading scorer since Liberty's Elena Kisseleva in 1996-97.

Tallest Since Feenstra

Carra Coy, one of three new freshmen on this year's team, stands 6-6. That makes the Summerville, S.C., native the tallest Lady Flame since 6-8 Katie Feenstra graduated after the 2004-05 campaign.

International Flavor

Freshman Jelena Antic hails from Skopje, Macedonia and sophomore Tolu Omotola was born in London, England, giving Liberty international players on its roster for the 16th consecutive season. The last time the Lady Flames' roster consisted solely of American-born players was the 1993-94 campaign. Every Carey Green-coached team at Liberty has featured at least one international player.

Local Flavor

Even though Jelena Antic was born in Macedonia, she played high school basketball at Liberty Christian Academy in Lynchburg, Va. She is one of four current Lady Flames who attended high school within 70 miles of the Liberty campus, joining Kylee Beecher (Hidden Valley), Devon Brown (Waynesboro) and Brittany Campbell (Brookville).

Top 50 Scorers in Liberty History

1. Elena Kisseleva	2,154
2. Megan Frazee	1,883
3. Katie Feenstra	1,845
4. Sharon Wilkerson	1,733
5. Sarah Wilkerson	1,331
6. Ginny Holloway	1,180
7. Sharon Snodgrass	1,169
8. Kristal Tharp	1,161
9. Moriah Frazee	1,147
10. Pam Wilder	1,120
11. Brenda Gunsallus	1,078
12. Cynthia Thomson	1,055
13. Dawn Coleman	908
14. Daina Staugaitiene	846
15. Sandra Bridges	822
16. Reggie Gomes	810
17. Kristi Mercer	809
18. Lil Cooper	808
19. Michelle Fricke	803
20. Stacey White	801
21. Malynda Keck	792
22. Sheila Ford	761
23. Pam Stanfield	752
24. Michelle Wyms	748
25. Sharon Freet	727
26. Jeri Wiley	717
27. Annetta Paraham	705
28. Trish Harris	697
29. Allyson Fasnacht	672
30. Courtney Watkins	669
31. Rachel Hammond	663
32. Harriett Blair	651
33. Meribeth Feenstra	628
34. Monique Leonard	624
35. Rachel Young	610
36. Kristina Palaimaite	600
37. Carla Weaver	594
38. Theresa Bream	589
39. Anna Barrington	579
40. Molly Frazee	571
41. Missy Roberts	560
42. Erin Wall	551
43T. Beth Ralph	547
43T. Irene Sloof	547
45. Angie Johnson	545
46. Kathy Wooten	543
47. Avery Warley	529
48. Stephanie Walker	524
49. Jennifer Fairfax	513
50. Trena Criss	509

Other Current Players:

Amber Mays	458
Devon Brown	418
Rachel McLeod	391

Gaining Some National Recognition

Liberty earned a single vote in the most recent ESPN/USA Today Coaches Top 25 Poll, released on Dec. 8, marking the second straight week the Lady Flames received a vote.

Liberty also collected one vote in the AP Top 25 Poll, released on Nov. 30.

Turning Up the Heat in the Furnace

The 2009-10 campaign is the 18th season the Liberty women's basketball team has called the Vines Center its full-time home. The "Furnace" has served as a favorable venue for the Lady Flames over the years. Liberty is 199-53 (.790) all-time at the Vines Center, including 10-2 last season.

The Lady Flames are 11-2 to start this year's 15-game home schedule and are 107-11 in their last 118 home games, dating back to the 2001-02 season.

Corralling the Caroms

Liberty has ranked among the nation's top five teams in rebounding margin for six consecutive seasons, including a No. 2 listing in 2008-09. Even though two of the top three rebounders from last year's squad graduated, the Lady Flames have hit the boards hard again this season.

Liberty has won the rebounding battle in 24 of its first 25 games this season, by a nation-high average of 14.8 boards per contest. Leading the way are redshirt freshman Devon Brown (8.8 rpg) and redshirt sophomore Avery Warley (8.4 rpg).

Lack of Overtime

Liberty has played only one overtime game in its last 204 outings, a 64-62 setback at High Point on Jan. 20, 2007. Since that contest at the Millis Center, the Lady Flames have played 103 consecutive games without needing extra time. No players on Liberty's current roster have competed in an overtime game with the Lady Flames.

The Lady Flames' most recent overtime victory came on Jan. 6, 2004, when Liberty defeated American, 76-72, on the road in double overtime.

Liberty's most recent overtime contest at the Vines Center was a memorable one. The Lady Flames defeated Virginia, 77-69, in overtime on Nov. 26, 2002, to claim their first-ever win over the Cavaliers. It also marked Liberty's first win over a ranked opponent, as Virginia entered the game with a No. 25 national ranking.

Big Shoes to Fill

Seven seniors graduated from last year's Liberty team, which went 24-9 and won its second consecutive Big South title. Alexandria Bream, Megan Frazee, Molly Frazee, Moriah Frazee, Rachel Hammond, Rebecca Lightfoot and Jessica Nelson accounted for 57.0 percent of the Lady Flames' points and 41.7 percent of the team's rebounds in 2008-09.

Headlining the group was Megan Frazee, who claimed the Big South Player of the Year and Big South Championship MVP awards.

Youth will be Served

Underclassmen have stepped up to fill the void left by the seven seniors who graduated from the 2008-09 Liberty roster. Through the first 25 games of the 2009-10 campaign, the Lady Flames' freshmen and sophomores are accounting for 72.9 percent of the team's points and 75.1 percent of Liberty's rebounds.

The Lady Flames' top five rebounders are all either freshmen or sophomores, as are four of their top five scorers.

There is Only One

Starting point guard Amber Mays is the only senior on this year's team roster. Liberty has not had so few seniors since the 2005-06 Lady Flames played the season without a single senior.

Mays has played well during her final collegiate campaign, leading the Lady Flames in assists (4.1 apg) and steals (2.3 apg), while ranking second in field goal percentage (.545) and third in scoring (8.5 ppg).

Top 50 Rebounders in Liberty History

1. Katie Feenstra	1,033
2. Sharon Snodgrass	1,026
3. Megan Frazee	951
4. Elena Kisseleva	876
5. Carla Weaver	859
6. Sharon Wilkerson	625
7. Moriah Frazee	601
8. Sharon Freet	590
9. Kristina Palaimaite	586
10. Pam Stanfield	583
11. Lil Cooper	578
12. Annetta Paraham	556
13. Meribeth Feenstra	547
14. Theresa Bream	536
15. Jennifer Fairfax	533
16T. Wendy Johnson	532
16T. Malynda Keck	532
18. Pam Wilder	529
19. Kathy Wooten	504
20. Michelle Fricke	500
21. Helen Gomes	493
22. Trish Harris	484
23. Flori Willie	478
24. Michelle Wyrms	472
25. Avery Warley	467
26. Kristal Tharp	466
27. Stacey White	456
28. Lynn Beardslee	450
29. Karolina Piotrkiewicz	445
30. Sarah Wilkerson	442
31. Erin Wall	423
32T. Ginny Holloway	420
32T. Daina Staugaitiene	420
34. Dawn Coleman	405
35. Jayne Mottershead	401
36. Sheila Ford	395
37. Angie Johnson	389
38. Trena Criss	370
39. Erma Williams	357
40. Rebecca Lightfoot	351
41. Courtney Watkins	327
42. Crystal Peace	320
43. Molly Frazee	319
44. Monique Leonard	315
45. Harriett Blair	310
46. Reggie Gomes	308
47. Jamie Feagin	303
48. Rachel Young	301
49. Roli-Ann Nikagbatse	296
50T. Rachel Hammond	287
50T. Beth Ralph	287

Other Current Players:

Kylee Beecher	239
Devon Brown	220
Rachel McLeod	184

A Tale of Two Halves

Liberty has regularly stepped up its level of play during the second half this season. The Lady Flames are outscoring opponents by an average score of 35.2-25.0 during the final 20 minutes of play, thus far this season.

Liberty is shooting .500 from the field after halftime, while limiting opponents to a .331 second-half field goal percentage.

Furious Comeback

The Lady Flames fell behind Navy, 20-4, 7:56 into the Navy Classic championship game on Nov. 21. Liberty then outscored the host Midshipmen, 51-23, during the remainder of the game to claim an improbable 55-43 victory.

It was the Lady Flames' largest comeback since Nov. 27, 2001, in a matchup with VCU at the Vines Center. The Rams owned a 38-22 advantage with 18:41 remaining in the second half, before the Lady Flames rallied for a 65-60 victory.

Furious Comeback, The Sequel

Liberty trailed host Coastal Carolina, 28-18, with 17 minutes remaining in their game on Jan. 25. The Lady Flames then outscored the Chanticleers by a 39-10 count the rest of the way, closing out their 57-38 with a game-ending 24-2 run.

Darlings of Defense

Strong defense has been a staple of all Carey Green-coached teams at Liberty, but this year's team has been one of his best defensive squads. Below is a comparison between the 2009-10 Lady Flames' defensive statistics and the existing school records.

Statistic: 2009-10 average (school record)

Opponent Points per Game: 48.2 ppg (52.6 ppg in 2008-09)

Opponent Field Goal Percentage: .341 (.328 in 2004-05)

Steals: 282/11.3 per game (347/11.2 per game in 1999-2000)

Warley Wins

Redshirt sophomore forward Avery Warley averaged 16.5 ppg and 14.0 rpg as Liberty went 2-0 on its annual South Carolina "Beach Trip." As a result, she earned the first Big South Player of the Week award of her career on Jan. 26.

Antic Repeats

Jelena Antic claimed her second consecutive Big South Freshman of the Week certificate on Jan. 19, after averaging 13.3 ppg and 5.7 rpg in a trio of Liberty victories.

She is the first Lady Flame to win back-to-back Big South Freshman of the Week honors since Feb. 12 and 19, 2002, when Kristal Tharp accomplished the feat.

Freshman of the Week

LaKendra Washington's 21-point, four-steal performance at Lafayette on Nov. 28 was recognized by the Big South Conference on Dec. 1. The freshman guard was named the Big South Freshman of the Week, marking the second consecutive week a Liberty rookie was honored by the Big South.

First Since Frazee

After averaging 21.0 ppg and 10.7 rpg during Liberty's 3-0 week, Devon Brown was honored as Big South Player of the Week on Nov. 24. She became the first Lady Flames freshman to win the award since Megan Frazee captured it twice during her rookie season (Dec. 5, 2005 & Jan. 16, 2006).

National Statistical Rankings

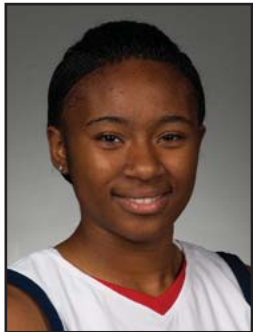
Through the contests of Feb. 21, the Lady Flames were ranked among the NCAA's top 20 teams in seven statistical categories. At that juncture, Liberty sat No. 1 in rebound margin (+14.5), No. 2 in scoring defense (47.9 ppg), No. 5 both in field goal percentage (.475) and field goal percentage defense (.337), No. 7 in three-point field goal percentage defense (.267), No. 11 in scoring margin (+17.7) and No. 16 in steals per game (11.3 spg).

Liberty's 2009-10 Starting Lineups

Game	Date	Opponent	Result	Guard	Guard	Guard	Forward	Forward	Record
1	Nov. 13	WSSU	W, 71-26	Mays	McLeod	Brown	Beecher	Warley	1-0
2	Nov. 17	UNCG	W, 60-42	Mays	McLeod	Brown	Beecher	Warley	2-0
3	Nov. 20	Tulane	W, 63-52	Mays	McLeod	Brown	Beecher	Warley	3-0
4	Nov. 21	Navy	W, 55-43	Mays	McLeod	Brown	Beecher	Warley	4-0
5	Nov. 28	Lafayette	W, 90-55	Mays	McLeod	Brown	Beecher	Warley	5-0
6	Dec. 1	JMU	L, 50-60	Mays	McLeod	Brown	Beecher	Warley	5-1
7	Dec. 5	Glennville St.	W, 86-45	Mays	McLeod	Brown	Beecher	Warley	6-1
8	Dec. 15	Auburn	L, 64-70	Mays	McLeod	Brown	Beecher	Warley	6-2
9	Dec. 28	Cornell	W, 70-40	Mays	McLeod	Brown	Antic	Warley	1-0
10	Dec. 29	Virginia	L, 54-63	Mays	McLeod	Brown	Antic	Warley	1-1
11	Jan. 2	G.-Webb	L, 65-70	Mays	McLeod	Brown	Antic	Warley	1-2
12	Jan. 5	N.C. A&T	W, 57-51	Mays	McLeod	Brown	Antic	Warley	2-2
13	Jan. 9	Winthrop	W, 67-38	Mays	McLeod	Brown	Antic	Warley	3-2
14	Jan. 12	Longwood	W, 78-55	Mays	McLeod	Brown	Antic	Warley	4-2
15	Jan. 16	Presbyterian	W, 73-27	Mays	McLeod	Brown	Antic	Warley	5-2
16	Jan. 18	UNCA	W, 82-40	Mays	McLeod	Brown	Antic	Warley	6-2
17	Jan. 23	CSU	W, 65-52	Mays	McLeod	Brown	Beecher	Warley	7-2
18	Jan. 25	Coastal Car.	W, 57-38	Mays	McLeod	Brown	Beecher	Warley	8-2
19	Jan. 30	High Point	W, 75-62	Mays	McLeod	Brown	Beecher	Warley	9-2
20	Feb. 1	Radford	W, 63-45	Mays	McLeod	Brown	Beecher	Warley	10-2
21	Feb. 4	N.C. Central	W, 64-44	Mays	McLeod	Brown	Beecher	Warley	11-2
22	Feb. 8	G.-Webb	L, 56-59	Mays	McLeod	Brown	Beecher	Warley	11-3
23	Feb. 15	Winthrop	W, 52-18	Mays	McLeod	Brown	Beecher	Warley	12-3
24	Feb. 20	Coastal Car.	W, 57-55	Mays	McLeod	Brown	Beecher	Warley	13-3
25	Feb. 22	CSU	W, 66-56	Mays	McLeod	Brown	Beecher	Warley	14-3

Miscellaneous Stats

Date	Opponent	LU Result	LU Big				Opp Big			LC	LU in			Opp in		Paint		Off TOs		2nd Ch		Bench	
			Lead	Lead	Ties	LC	Lead	Lead	Tied		Lead	Lead	Tied	LU	Opp	LU	Opp	LU	Opp	LU	Opp	LU	Opp
Nov. 13	Winston-Salem State	W, 71-26	45	0	0	0	0	38:11	0:00	1:49	38	12	35	10	13	7	18	15					
Nov. 17	UNC Greensboro	W, 60-42	19	2	1	1	35:17	0:18	4:25	40	10	18	14	9	9	10	17						
Nov. 20	Tulane	W, 63-52	20	2	1	1	37:33	1:16	1:11	34	18	23	18	9	2	11	9						
Nov. 21	Navy	W, 55-43	12	16	0	1	12:24	26:56	0:40	26	12	16	12	16	6	8	11						
Nov. 28	Lafayette	W, 90-55	36	0	0	0	39:41	0:00	0:19	64	16	38	22	23	6	34	10						
Dec. 1	James Madison	L, 50-60	2	15	1	1	1:53	35:58	2:09	30	24	10	12	13	12	6	19						
Dec. 5	Glennville State	W, 86-45	42	0	0	0	39:56	0:00	0:04	64	10	19	17	15	16	34	20						
Dec. 15	Auburn	L, 64-70	2	14	2	4	0:54	37:50	1:16	42	20	16	11	6	16	8	25						
Dec. 28	Cornell	W, 70-40	36	0	0	0	39:48	0:00	0:12	44	6	22	12	15	6	24	9						
Dec. 29	No. 21/23 Virginia	L, 54-63	6	11	6	17	15:09	21:19	3:32	36	28	14	35	14	7	16	21						
Jan. 2	Gardner-Webb	L, 65-70	0	13	4	0	0:00	37:52	2:08	34	20	13	21	10	5	20	17						
Jan. 5	North Carolina A&T	W, 57-51	14	2	1	2	37:12	1:21	1:27	32	18	21	20	17	0	9	7						
Jan. 9	Winthrop	W, 67-38	35	7	2	3	30:52	5:41	3:27	34	12	29	8	10	2	25	21						
Jan. 12	Longwood	W, 78-55	24	0	0	0	39:24	0:00	0:36	54	18	27	24	19	11	19	26						
Jan. 16	Presbyterian	W, 73-27	49	0	0	0	39:45	0:00	0:15	38	12	39	6	7	4	21	12						
Jan. 18	UNC Asheville	W, 82-40	46	0	2	0	37:08	0:00	2:52	38	12	33	12	23	11	33	11						
Jan. 23	Charleston Southern	W, 65-52	18	0	0	0	39:56	0:00	0:04	48	6	13	19	16	7	9	18						
Jan. 25	Coastal Carolina	W, 57-38	19	10	5	7	17:01	17:44	5:15	20	8	25	6	18	5	9	6						
Jan. 30	High Point	W, 75-62	13	9	10	11	13:29	20:16	6:15	42	22	16	9	16	2	8	21						
Feb. 1	Radford	W, 63-45	18	2	2	1	36:57	1:12	1:51	36	12	27	13	10	14	7	17						
Feb. 4	N.C. Central	W, 64-44	20	0	0	0	39:08	0:00	0:52	42	22	17	13	20	8	21	17						
Feb. 8	Gardner-Webb	L, 56-59	9	6	2	8	26:46	10:47	2:27	34	30	18	15	15	5	9	11						
Feb. 15	Winthrop	W, 52-18	34	0	0	0	38:42	0:00	1:18	30	8	19	7	11	0	20	13						
Feb. 20	Coastal Carolina	W, 57-55	12	5	2	2	35:46	2:33	1:41	44	12	16	19	5	5	17	5						
Feb. 22	Charleston Southern	W, 66-56	17	2	4	6	33:59	3:55	2:06	44	16	29	23	22	6	10	18						



1
LaKendra
Washington
5-8 Freshman Guard
Milwaukee, Wis.
The Hope School

Season/Career Highs

Points - 21
at Lafayette (11-28-09)
FG Made - 9
at Lafayette (11-28-09)
FG Attempts - 12 (Two times)
Most recently, at Lafayette (11-28-09)
3FG Made - 2 (Three times)
Most recently, vs. NCCU (02-04-10)
3FG Attempts - 6
vs. Winston-Salem State (11-13-09)
FT Made - 2 (Three times)
Most recently, at Lafayette (11-28-09)
FT Attempts - 4 (Two times)
Most recently, at Lafayette (11-28-09)
Rebounds - 5 (Three times)
Most recently, at Virginia (12-29-09)
Assists - 2 (Four times)
Most recently, vs. NCCU (02-04-10)
Steals - 5
vs. Winston-Salem State (11-13-09)
Blocks - 1 (Three times)
Most recently, vs. NCCU (02-04-10)

2009-10 Game-By-Game Statistics

OPPONENT	DATE	MIN	FG-FGA	3FG-FGA	FT-FTA	OFF-DEF-TOT	A	TO	BLK	STL	PTS
Winston-Salem St.	11-13-09	22	4-12	1-6	0-0	0-2-2	1	3	0	5	9
UNC Greensboro	11-17-09	9	0-2	0-2	2-2	0-0-0	0	0	0	1	2
Tulane	11-20-09	10	1-2	0-1	0-0	0-1-1	0	2	1	0	2
Navy	11-21-09	15	2-3	0-0	2-4	0-4-4	0	1	0	0	6
Lafayette	11-28-09	26	9-12	1-2	2-4	0-0-0	2	1	0	4	21
James Madison	12-01-09	8	1-4	0-0	0-0	1-0-1	0	0	0	0	2
Glenville St.	12-05-09	20	4-9	0-0	0-0	1-4-5	2	5	0	2	8
Auburn	12-15-09	11	1-3	0-1	0-0	0-1-1	0	0	0	0	2
Cornell	12-28-09	21	4-10	0-3	1-2	1-4-5	2	3	1	2	9
Virginia	12-29-09	15	2-4	0-0	1-1	3-2-5	1	3	0	2	5
Gardner-Webb	01-02-10	7	0-2	0-0	0-0	0-0-0	0	0	0	1	0
N.C. A&T	01-05-10	14	0-4	0-1	0-0	1-1-2	0	2	0	0	0
Winthrop	01-09-10	17	2-5	1-2	0-0	1-0-1	1	1	0	3	5
Longwood	01-12-10	8	0-2	0-2	1-2	2-0-2	1	4	0	0	1
Presbyterian	01-16-10	20	3-5	0-2	0-0	1-2-3	0	5	0	2	6
UNC Asheville	01-18-10	16	2-6	2-4	0-3	1-0-1	0	2	0	4	6
Charleston So.	01-23-10	13	2-3	0-1	0-0	0-1-1	0	0	0	1	4
Coastal Carolina	01-25-10	12	2-3	2-2	1-2	0-1-1	0	0	0	0	7
High Point	01-30-10	3	0-0	0-0	0-0	0-0-0	0	0	0	0	0
Radford	02-01-10	18	0-0	0-0	0-0	0-0-0	1	3	0	0	0
N.C. Central	02-04-10	21	2-3	2-3	0-0	1-1-2	2	4	1	3	6
Gardner-Webb	02-08-10	4	0-0	0-0	0-0	0-0-0	1	0	0	0	0
Winthrop	02-15-10	17	1-1	0-0	0-1	1-1-2	1	2	0	3	2
Coastal Carolina	02-20-10	12	2-3	0-1	0-0	0-1-1	0	0	0	0	4
Charleston So.	02-22-10	5	0-0	0-0	0-0	1-0-1	0	1	0	0	0

2009-10 Notes/Highlights

- Tabbed Big South Freshman of the Week on Dec. 1.
- Became Liberty's first true freshman to score 20 points in a game since Megan Frazee during the 2005-06 season, when she exploded for 21 points at Lafayette on Nov. 28.
- Has made six of her last 11 triples, after making only three of 22 three-point attempts during the season's first 15 games.

Career Stats

Season	GP	GS	Min	Avg	FG	FGA	Pct	3FG	3FGA	Pct	FT	FTA	Pct	ORB	DRB	TOT	Avg	Asst	TO	Blk	Stl	Pts	Avg
2009-10	25	0	344	13.8	44	98	.449	9	33	.273	10	21	.476	15	26	41	1.6	15	42	3	33	107	4.3



11

Jelena Antic

6-2 Freshman G/F

Skopje, Macedonia

Liberty Christian Academy

Season/Career Highs

Points - 19

vs. Longwood (01-12-10)

FG Made - 8

vs. Longwood (01-12-10)

FG Attempts - 11

vs. Longwood (01-12-10)

3FG Made - 2

at Gardner-Webb (01-02-10)

3FG Attempts - 3

at Auburn (12-15-09)

FT Made - 6

vs. North Carolina A&T (01-05-10)

FT Attempts - 7

vs. North Carolina A&T (01-05-10)

Rebounds - 10 (Two times)

Most recently, vs. Longwood (01-12-10)

Assists - 4

vs. North Carolina A&T (01-05-10)

Steals - 3 (Two times)

Most recently, vs. Presby. (01-16-10)

Blocks - 1 (Two times)

Most recently, vs. N.C. A&T (01-05-10)

2009-10 Game-By-Game Statistics

OPPONENT	DATE	MIN	FG-FGA	3FG-FGA	FT-FTA	OFF-DEF-TOT	A	TO	BLK	STL	PTS
Winston-Salem St.	11-13-09					Did not play					
UNC Greensboro	11-17-09					Did not play					
Tulane	11-20-09					Did not play					
Navy	11-21-09	18	0-4	0-0	0-1	4-1-5	3	1	0	0	0
Lafayette	11-28-09	23	2-5	0-0	0-1	2-2-4	2	2	0	3	4
James Madison	12-01-09	12	0-3	0-1	1-2	0-4-4	0	2	0	0	1
Glenville St.	12-05-09	24	5-8	0-0	2-4	2-8-10	0	6	0	1	12
Auburn	12-15-09	23	2-8	0-3	0-0	2-1-3	1	3	0	1	4
Cornell	12-28-09	21	4-5	1-1	2-2	4-4-8	2	1	0	0	11
Virginia	12-29-09	34	2-7	1-1	0-0	3-0-3	3	1	1	0	5
Gardner-Webb	01-02-10	25	4-6	2-2	0-0	3-2-5	1	1	0	0	10
N.C. A&T	01-05-10	29	4-8	0-0	6-7	1-3-4	4	3	1	1	14
Winthrop	01-09-10	27	4-7	0-1	1-1	3-3-6	1	3	0	1	9
Longwood	01-12-10	30	8-11	0-0	3-5	5-5-10	2	5	0	2	19
Presbyterian	01-16-10	24	7-7	0-0	0-0	1-2-3	1	3	0	3	14
UNC Asheville	01-18-10	18	3-5	1-1	0-0	4-0-4	0	3	0	0	7
Charleston So.	01-23-10					Did not play					
Coastal Carolina	01-25-10					Did not play					
High Point	01-30-10					Did not play					
Radford	02-01-10					Did not play					
N.C. Central	02-04-10					Did not play					
Gardner-Webb	02-08-10					Did not play					
Winthrop	02-15-10					Did not play					
Coastal Carolina	02-20-10	20	0-2	0-1	2-4	1-2-3	1	2	0	2	2
Charleston So.	02-22-10	19	2-4	0-0	0-2	2-4-6	3	3	0	1	4

2009-10 Notes/Highlights

-- Returned to action versus Coastal Carolina on Feb. 20, after missing seven games due to a leg injury.

-- Won her second consecutive Big South Freshman of the Week award on Jan. 19, after contributing 13.3 ppg and 5.7 rpg, while shooting 78.3 percent (18-of-23) from the field, during Liberty's 3-0 week.

-- Liberty's first player to win consecutive Big South Freshman of the Week honors since Kristal Tharp did so Feb. 12 and 19, 2002.

-- Previously named Big South Freshman of the Week on Jan. 12, after posting 11.0 ppg, 5.0 rpg and 2.5 apg during wins over North Carolina A&T and Winthrop.

-- Made her first appearance in the starting lineup, Dec. 28 versus Cornell.

-- Has made 15 of her last 21 field goal attempts, dating back to the second half of the Longwood game (Jan. 12).

-- Has connected on five of her last seven three-pointers, dating back to a Dec. 28 victory over Cornell.

Career Stats

Season	GP	GS	Min	Avg	FG	FGA	Pct	3FG	3FGA	Pct	FT	FTA	Pct	ORB	DRB	TOT	Avg	Asst	TO	Blk	Stl	Pts	Avg
2009-10	15	8	347	23.1	47	90	.522	5	11	.455	17	29	.586	37	41	78	5.2	24	39	2	15	116	7.7



12

Danika Dale

6-1 Sophomore G/F
Fort Hood, Texas
Shoemaker HS

Season Highs

Points - 15

vs. N.C. Central (02-04-10)

FG Made - 5

vs. N.C. Central (02-04-10)

FG Attempts - 8

at Winthrop (02-15-10)

3FG Made - 1 (Five times)

Most recently, vs. G.-Webb (02-08-10)

3FG Attempts - 3 (Two times)

Most recently, vs. Presby. (01-16-10)

FT Made - 5

vs. N.C. Central (02-04-10)

FT Attempts - 8

vs. N.C. Central (02-04-10)

Rebounds - 9

vs. Glenville State (12-05-09)

Assists - 3 (Three times)

Most recently, vs. Winthrop (01-09-10)

Steals - 3 (Two times)

Most recently, vs. Glen. St. (12-05-09)

Blocks - 2 (Four times)

Most recently, at Radford (02-01-10)

Career Highs

Points - 15

vs. N.C. Central (02-04-10)

FG Made - 5

vs. N.C. Central (02-04-10)

FG Attempts - 8

at Winthrop (02-15-10)

3FG Made - 2

vs. Auburn (12-07-08)

3FG Attempts - 3 (Four times)

Most recently, vs. Presby. (01-16-10)

FT Made - 5

vs. N.C. Central (02-04-10)

FT Attempts - 9

vs. Saint Paul's (12-13-08)

Rebounds - 9

vs. Glenville State (12-05-09)

Assists - 6

vs. Presbyterian (03-02-09)

Steals - 4

vs. Saint Paul's (12-13-08)

Blocks - 2 (Four times)

Most recently, at Radford (02-01-10)

2009-10 Game-By-Game Statistics

OPPONENT	DATE	MIN	FG-FGA	3FG-FGA	FT-FTA	OFF-DEF-TOT	A	TO	BLK	STL	PTS
Winston-Salem St.	11-13-09	23	1-5	0-2	4-4	2-5-7	3	3	2	3	6
UNC Greensboro	11-17-09	16	0-3	0-0	0-0	1-3-4	0	1	2	2	0
Tulane	11-20-09	11	0-1	0-0	0-0	1-0-1	1	1	0	2	0
Navy	11-21-09	3	0-2	0-2	0-0	1-1-2	1	0	0	0	0
Lafayette	11-28-09	15	2-2	1-1	1-2	0-4-4	1	0	0	0	6
James Madison	12-01-09	21	1-4	1-1	0-0	0-5-5	1	2	2	0	3
Glenville St.	12-05-09	19	2-3	0-0	2-3	1-8-9	3	4	0	3	6
Auburn	12-15-09	4	0-1	0-0	0-0	0-0-0	0	1	0	0	0
Cornell	12-28-09	19	2-4	0-1	1-2	3-4-7	2	0	0	0	5
Virginia	12-29-09	14	1-6	0-3	1-2	1-3-4	0	4	0	0	3
Gardner-Webb	01-02-10	12	4-5	1-2	1-2	0-0-0	1	2	0	0	10
N.C. A&T	01-05-10	10	1-2	0-0	0-1	0-2-2	1	2	0	0	2
Winthrop	01-09-10	20	2-3	0-1	0-0	2-3-5	3	1	0	1	4
Longwood	01-12-10	9	1-3	0-1	0-0	2-2-4	1	1	0	1	2
Presbyterian	01-16-10	18	2-6	1-3	0-0	2-3-5	1	3	0	1	5
UNC Asheville	01-18-10	12	2-4	0-1	1-1	2-1-3	1	2	1	1	5
Charleston So.	01-23-10	19	1-4	0-1	1-2	2-2-4	2	3	0	1	3
Coastal Carolina	01-25-10	24	0-2	0-0	0-0	0-4-4	2	1	1	2	0
High Point	01-30-10	21	0-2	0-0	2-2	1-1-2	0	0	0	1	2
Radford	02-01-10	20	1-2	0-0	0-0	0-1-1	0	1	2	1	2
N.C. Central	02-04-10	23	5-7	0-0	5-8	2-1-3	2	3	1	0	15
Gardner-Webb	02-08-10	21	2-3	1-1	1-1	0-0-0	0	1	0	0	6
Winthrop	02-15-10	23	4-8	0-0	3-3	1-4-5	0	5	0	0	11
Coastal Carolina	02-20-10	12	1-1	0-0	3-4	0-0-0	0	0	0	0	5
Charleston So.	02-22-10	9	0-0	0-0	1-2	0-0-0	0	0	0	0	1

2009-10 Notes/Highlights

Career Stats

Season	GP	GS	Min	Avg	FG	FGA	Pct	3FG	3FGA	Pct	FT	FTA	Pct	ORB	DRB	TOT	Avg	Asst	TO	Blk	Stl	Pts	Avg
2008-09	26	0	254	9.8	16	45	.356	3	15	.200	8	18	.444	10	33	43	1.7	21	27	2	12	43	1.7
2009-10	25	0	398	15.9	35	83	.422	5	20	.250	27	39	.692	24	57	81	3.2	26	41	11	19	102	4.1
TOTAL	51	0	652	12.8	51	128	.398	8	35	.229	35	57	.614	34	90	124	2.4	47	68	13	31	145	2.8



15

Kylee Beecher
6-4 Sophomore F
Roanoke, Va.
Hidden Valley HS

Season Highs

Points - 14 (Two times)

Most recently, vs. UNCA (01-18-10)

FG Made - 7

vs. Glenville State (12-05-09)

FG Attempts - 9

at Charleston So. (01-23-10)

3FG Made - 1

at Winthrop (02-15-10)

3FG Attempts - 2 (Three times)

Most recently, at Winthrop (02-15-10)

FT Made - 8

vs. UNC Asheville (01-18-10)

FT Attempts - 10

vs. UNC Asheville (01-18-10)

Rebounds - 9 (Three times)

Most recently, at Radford (02-01-10)

Assists - 4

vs. N.C. Central (02-04-10)

Steals - 3

at Radford (02-01-10)

Blocks - 2

at Winthrop (02-15-10)

Career Highs

Points - 18

vs. Saint Paul's (12-13-08)

FG Made - 7

vs. Glenville State (12-05-09)

FG Attempts - 10

vs. Saint Paul's (12-13-08)

3FG Made - 1 (Three times)

Most recently, at Winthrop (02-15-10)

3FG Attempts - 2 (Five times)

Most recently, at Winthrop (02-15-10)

FT Made - 8

vs. UNC Asheville (01-18-10)

FT Attempts - 10

vs. UNC Asheville (01-18-10)

Rebounds - 10 (Three times)

Most recently, vs. High Point (01-31-09)

Assists - 5

vs. Saint Paul's (12-13-08)

Steals - 3 (Three times)

Most recently, at Radford (02-01-10)

Blocks - 2

at Winthrop (02-15-10)

2009-10 Game-By-Game Statistics

OPPONENT	DATE	MIN	FG-FGA	3FG-FGA	FT-FTA	OFF-DEF-TOT	A	TO	BLK	STL	PTS
Winston-Salem St.	11-13-09	23	2-3	0-0	4-4	1-1-2	2	0	1	0	8
UNC Greensboro	11-17-09	37	4-8	0-0	3-7	2-3-5	0	4	0	0	11
Tulane	11-20-09	36	3-5	0-0	0-0	3-0-3	2	4	0	1	6
Navy	11-21-09	36	2-8	0-1	0-0	0-2-2	0	2	0	1	4
Lafayette	11-28-09	25	2-2	0-0	1-2	1-2-3	2	0	1	0	5
James Madison	12-01-09	26	2-4	0-0	0-0	3-3-6	1	1	1	2	4
Glenville St.	12-05-09	21	7-8	0-0	0-0	4-2-6	0	1	0	0	14
Auburn	12-15-09	25	1-4	0-0	5-6	0-0-0	1	0	0	2	7
Cornell	12-28-09	20	2-6	0-2	1-2	3-0-3	0	4	0	0	5
Virginia	12-29-09	21	2-4	0-1	2-2	2-0-2	0	0	0	0	6
Gardner-Webb	01-02-10	16	1-3	0-1	2-3	0-3-3	0	1	0	0	4
N.C. A&T	01-05-10	18	0-1	0-0	0-0	0-3-3	0	4	1	1	0
Winthrop	01-09-10	19	2-3	0-0	1-1	0-2-2	2	1	1	1	5
Longwood	01-12-10	25	3-5	0-0	4-5	1-5-6	1	3	0	0	10
Presbyterian	01-16-10	18	1-1	0-0	3-6	0-3-3	1	2	0	1	5
UNC Asheville	01-18-10	27	3-8	0-0	8-10	2-3-5	2	2	0	2	14
Charleston So.	01-23-10	33	4-9	0-0	2-2	4-5-9	0	2	0	2	10
Coastal Carolina	01-25-10	32	2-6	0-0	2-2	8-1-9	1	2	0	1	6
High Point	01-30-10	21	0-4	0-1	3-4	2-2-4	2	0	0	0	3
Radford	02-01-10	38	5-8	0-0	3-4	3-6-9	0	4	0	3	13
N.C. Central	02-04-10	19	1-7	0-0	1-2	1-1-2	4	3	0	0	3
Gardner-Webb	02-08-10	30	2-6	0-2	0-0	3-1-4	2	0	0	1	4
Winthrop	02-15-10	29	2-7	1-2	4-6	1-4-5	1	0	2	1	9
Coastal Carolina	02-20-10	25	4-7	0-1	1-1	1-0-1	0	2	0	1	9
Charleston So.	02-22-10	28	0-3	0-1	4-4	1-1-2	1	1	0	0	4

2009-10 Notes/Highlights

-- Ranks No. 15 in the Big South with 1.8 offensive rebounds per game.

Career Stats

Season	GP	GS	Min	Avg	FG	FGA	Pct	3FG	3FGA	Pct	FT	FTA	Pct	ORB	DRB	TOT	Avg	Asst	TO	Blk	Stl	Pts	Avg
2008-09	31	4	664	21.4	54	118	.458	2	7	.286	27	38	.711	43	97	140	4.5	19	45	2	18	137	4.4
2009-10	25	17	648	25.9	57	130	.438	1	12	.083	54	73	.740	46	53	99	4.0	25	43	7	20	169	6.8
TOTAL	56	21	1312	23.4	111	248	.448	3	19	.158	81	111	.730	89	150	239	4.3	44	88	9	38	306	5.5



21
Amber Mays
5-6 Senior Guard
Pasadena, Calif.
Pasadena HS
(State Fair CC)

Season Highs

Points - 18
at Auburn (12-15-09)
FG Made - 9
at Auburn (12-15-09)
FG Attempts - 15
vs. James Madison (12-01-09)
3FG Made - 2
vs. UNC Asheville (01-18-10)
3FG Attempts - 2
vs. UNC Asheville (01-18-10)
FT Made - 4 (Two times)
Most recently, at Coastal (01-25-10)
FT Attempts - 7
at Coastal Carolina (01-25-10)
Rebounds - 5 (Two times)
Most recently, at High Point (01-30-10)
Assists - 10
vs. Winthrop (01-09-10)
Steals - 5
vs. Longwood (01-12-10)
Blocks - 1
at Charleston So. (01-23-10)

Career Highs

Points - 18
at Auburn (12-15-09)
FG Made - 9
at Auburn (12-15-09)
FG Attempts - 15
vs. James Madison (12-01-09)
3FG Made - 2 (Two times)
Most recently, vs. UNCA (01-18-10)
3FG Attempts - 3
at Vanderbilt (12-22-08)
FT Made - 6
at UNC Asheville (01-19-09)
FT Attempts - 8
vs. UC Riverside (11-21-08)
Rebounds - 6 (Two times)
Most recently, vs. Radford (02-02-09)
Assists - 10
vs. Winthrop (01-09-10)
Steals - 8
vs. East Tennessee St. (01-13-09)
Blocks - 1 (Three times)
Most recently, at CSU (01-23-10)

2009-10 Game-By-Game Statistics

OPPONENT	DATE	MIN	FG-FGA	3FG-FGA	FT-FTA	OFF-DEF-TOT	A	TO	BLK	STL	PTS
Winston-Salem St.	11-13-09	24	3-7	0-0	1-2	0-0-0	6	1	0	4	7
UNC Greensboro	11-17-09	26	4-7	1-1	2-6	0-1-1	4	5	0	4	11
Tulane	11-20-09	33	4-6	0-0	2-4	0-2-2	3	4	0	4	10
Navy	11-21-09	30	2-5	0-0	4-5	2-0-2	5	3	0	1	8
Lafayette	11-28-09	31	4-6	0-0	3-4	1-3-4	4	5	0	4	11
James Madison	12-01-09	33	7-15	0-1	0-1	0-2-2	2	1	0	1	14
Glenville St.	12-05-09	18	2-3	0-0	1-2	0-2-2	4	2	0	2	5
Auburn	12-15-09	35	9-13	0-0	0-0	0-1-1	3	6	0	4	18
Cornell	12-28-09	20	2-2	0-0	0-0	0-2-2	8	2	0	4	4
Virginia	12-29-09	28	2-4	0-0	3-4	0-0-0	3	7	0	3	7
Gardner-Webb	01-02-10	33	4-9	0-0	2-6	3-2-5	6	4	0	1	10
N.C. A&T	01-05-10	25	2-4	0-0	0-0	0-2-2	3	2	0	1	4
Winthrop	01-09-10	22	1-3	0-0	1-2	0-0-0	10	2	0	2	3
Longwood	01-12-10	30	3-4	1-1	0-0	0-0-0	3	5	0	5	7
Presbyterian	01-16-10	21	4-6	0-0	0-0	0-2-2	6	1	0	2	8
UNC Asheville	01-18-10	23	5-8	2-2	2-2	1-0-1	5	0	0	3	14
Charleston So.	01-23-10	27	6-9	0-0	2-5	0-0-0	3	1	1	1	14
Coastal Carolina	01-25-10	31	2-6	0-1	4-7	1-1-2	2	4	0	2	8
High Point	01-30-10	26	2-6	0-0	3-4	0-5-5	2	6	0	1	7
Radford	02-01-10	24	4-6	0-0	2-4	1-0-1	7	5	0	3	10
N.C. Central	02-04-10	28	3-6	0-0	2-2	0-2-2	8	4	0	1	8
Gardner-Webb	02-08-10	34	2-7	0-1	2-6	1-0-1	3	2	0	2	6
Winthrop	02-15-10	20	0-1	0-0	1-2	0-1-1	1	4	0	0	1
Coastal Carolina	02-20-10	34	6-10	0-0	0-0	1-2-3	2	1	0	1	12
Charleston So.	02-22-10	20	2-3	0-0	2-4	0-0-0	0	5	0	1	6

2009-10 Notes/Highlights

- The only senior on Liberty's 2009-10 roster.
- Leads the Big South in assist-to-turnover ratio (1.26), while ranking No. 2 in assists (4.2 apg) and No. 3 in steals (2.3 spg).
- Distributed a career-high 10 assists against Winthrop (Jan. 9), the most by a Lady Flame since Daina Staugaitiene's 10 assists versus Morgan State on Nov. 22, 2002.
- Had recorded a steal in 24 consecutive games, prior to the Feb. 15 game at Winthrop. Has notched a steal in 34 of her last 36 outings.
- First Lady Flame to distribute 100 assists in back-to-back seasons since Daina Staugaitiene did so three straight years (2002-03, 2003-04 and 2004-05).

Career Stats

Season	GP	GS	Min	Avg	FG	FGA	Pct	3FG	3FGA	Pct	FT	FTA	Pct	ORB	DRB	TOT	Avg	Asst	TO	Blk	Stl	Pts	Avg
2008-09	33	31	1002	30.4	92	201	.458	5	15	.333	56	86	.651	11	75	86	2.6	126	114	2	68	245	7.4
2009-10	25	25	676	27.0	85	156	.545	4	7	.571	39	72	.542	11	30	41	1.6	103	82	1	57	213	8.5
TOTAL	58	56	1678	28.9	177	357	.496	9	22	.409	95	158	.601	22	105	127	2.2	229	196	3	125	458	7.9



23

Avery Warley
 6-3 R-Sophomore F
 Washington, D.C.
 H.D. Woodson HS

Season Highs

Points - 26
 at High Point (01-30-10)
FG Made - 9 (Two times)
 Most recently, vs. CSU (02-22-10)
FG Attempts - 13 (Two times)
 Most recently, at High Point (01-30-10)
3FG Made - 0
 None
3FG Attempts - 0
 None
FT Made - 8
 at High Point (01-30-10)
FT Attempts - 11
 at High Point (01-30-10)
Rebounds - 16
 at Charleston So. (01-23-10)
Assists - 2 (Three times)
 Most recently, vs. UNCA (01-18-10)
Steals - 3 (Three times)
 Most recently, vs. CSU (02-22-10)
Blocks - 3 (Two times)
 Most recently, at Winthrop (02-15-10)

Career Highs

Points - 26
 at High Point (01-30-10)
FG Made - 9 (Two times)
 Most recently, vs. CSU (02-22-10)
FG Attempts - 13 (Two times)
 Most recently, at High Point (01-30-10)
3FG Made - 0
 None
3FG Attempts - 0
 None
FT Made - 8
 at High Point (01-30-10)
FT Attempts - 11
 at High Point (01-30-10)
Rebounds - 18
 at Virginia Tech (12-30-08)
Assists - 3
 vs. Saint Paul's (12-13-08)
Steals - 3 (Five times)
 Most recently, vs. CSU (02-22-10)
Blocks - 4 (Two times)
 Most recently, vs. Winthrop (02-16-09)

2009-10 Game-By-Game Statistics

OPPONENT	DATE	MIN	FG-FGA	3FG-FGA	FT-FTA	OFF-DEF-TOT	A	TO	BLK	STL	PTS
Winston-Salem St.	11-13-09	26	2-6	0-0	0-2	4-5-9	2	5	0	0	4
UNC Greensboro	11-17-09	19	0-0	0-0	0-0	2-5-7	0	1	0	1	0
Tulane	11-20-09	37	4-10	0-0	1-2	6-5-11	1	4	0	1	9
Navy	11-21-09	32	5-7	0-0	0-0	3-3-6	0	6	0	0	10
Lafayette	11-28-09	21	8-13	0-0	3-3	8-3-11	0	1	0	0	19
James Madison	12-01-09	29	3-7	0-0	3-4	3-4-7	2	2	0	1	9
Glenville St.	12-05-09	25	3-6	0-0	1-4	2-4-6	0	1	1	0	7
Auburn	12-15-09	33	4-6	0-0	2-2	3-3-6	0	2	0	0	10
Cornell	12-28-09	22	4-5	0-0	2-6	2-5-7	0	2	1	1	10
Virginia	12-29-09	32	6-12	0-0	0-0	3-5-8	0	5	0	2	12
Gardner-Webb	01-02-10	26	4-8	0-0	2-5	3-3-6	0	5	1	3	10
N.C. A&T	01-05-10	26	4-8	0-0	1-4	6-5-11	0	5	0	2	9
Winthrop	01-09-10	23	2-2	0-0	1-2	1-4-5	1	5	1	1	5
Longwood	01-12-10	21	6-7	0-0	0-1	3-2-5	1	1	0	0	12
Presbyterian	01-16-10	25	1-2	0-0	4-7	2-0-2	0	3	0	1	6
UNC Asheville	01-18-10	24	2-8	0-0	2-6	4-6-10	2	2	3	0	6
Charleston So.	01-23-10	30	8-12	0-0	2-4	5-11-16	0	2	0	0	18
Coastal Carolina	01-25-10	28	6-9	0-0	3-8	7-5-12	0	2	1	0	15
High Point	01-30-10	38	9-13	0-0	8-11	5-9-14	0	0	1	2	26
Radford	02-01-10	24	2-4	0-0	0-0	1-4-5	0	1	2	1	4
N.C. Central	02-04-10	34	8-11	0-0	0-1	6-5-11	0	2	1	1	16
Gardner-Webb	02-08-10	32	5-10	0-0	5-7	3-7-10	0	3	2	1	15
Winthrop	02-15-10	26	2-3	0-0	0-0	3-5-8	1	1	3	2	4
Coastal Carolina	02-20-10	20	2-6	0-0	1-2	4-4-8	1	4	1	3	5
Charleston So.	02-22-10	34	9-9	0-0	4-9	6-4-10	1	2	0	3	22

2009-10 Notes/Highlights

- Set the Vines Center single-game field goal percentage record Monday versus Charleston Southern, connecting on all nine of her attempts.
- Named Big South Player of the Week on Jan. 26, after averaging 16.5 ppg and 14.0 rpg during Liberty's 2-0 South Carolina "Beach Trip."
- Leads the Big South in field goal percentage (.592) and ranks No. 2 in offensive rebounds (3.8 rpg), No. 3 in total rebounds (8.4 rpg), No. 5 in defensive rebounds (4.6 rpg) and No. 8 in blocked shots (0.7 bpg).
- Tabbed a "Rising Star" by the Richmond Times-Dispatch.
- Named to the Marriott Cavalier Classic all-tournament team, after averaging 11.0 ppg and 7.5 rpg in two games.
- Has tallied 467 career boards, putting her in 25th place in program history.
- Has scored 529 career points, putting her in 47th place in program history.
- Became the 50th Lady Flame ever to reach the 500-point milestone Feb. 15 at Winthrop, with a putback hoop, 13:42 before halftime.
- Has notched seven double-doubles this season (at Lafayette on Nov. 28; at Charleston Southern on Jan. 23; at Coastal Carolina on Jan. 25; at High Point on Jan. 30; vs. N.C. Central on Feb. 4; vs. Gardner-Webb on Feb. 8; vs. Charleston Southern on Feb. 22) and nine in her career.

Career Stats

Season	GP	GS	Min	Avg	FG	FGA	Pct	3FG	3FGA	Pct	FT	FTA	Pct	ORB	DRB	TOT	Avg	Asst	TO	Blk	Stl	Pts	Avg
2008-09	33	33	832	25.2	112	179	.626	0	0	.000	42	81	.519	85	171	256	7.8	11	76	47	23	266	8.1
2009-10	25	25	687	27.5	109	184	.592	0	0	.000	45	90	.500	95	116	211	8.4	12	67	18	26	263	10.5
TOTAL	58	58	1519	26.2	221	363	.609	0	0	.000	87	171	.509	180	287	467	8.1	23	143	65	49	529	9.1



25
Dymond Morgan
5-7 Junior Guard
Lynwood, Calif.
Lynwood HS
(Midland College)

Season/Career Highs

Points - 11
vs. Winthrop (01-09-10)
FG Made - 4
vs. Winthrop (01-09-10)
FG Attempts - 7 (Two times)
Most recently, at Winthrop (02-15-10)
3FG Made - 2
vs. Winthrop (01-09-10)
3FG Attempts - 3 (Two times)
Most recently, at Winthrop (02-15-10)
FT Made - 3 (Two times)
Most recently, at Radford (02-01-10)
FT Attempts - 4 (Two times)
Most recently, at Radford (02-01-10)
Rebounds - 7
vs. Glenville State (12-05-09)
Assists - 7
vs. Glenville State (12-05-09)
Steals - 5
vs. Presbyterian (01-16-10)
Blocks - 0
None

2009-10 Game-By-Game Statistics

OPPONENT	DATE	MIN	FG-FGA	3FG-FGA	FT-FTA	OFF-DEF-TOT	A	TO	BLK	STL	PTS
Winston-Salem St.	11-13-09	16	0-2	0-0	0-0	1-3-4	1	2	0	1	0
UNC Greensboro	11-17-09	24	3-5	0-1	0-0	1-4-5	2	2	0	1	6
Tulane	11-20-09	18	3-6	1-1	2-2	0-2-2	0	4	0	2	9
Navy	11-21-09	15	1-2	0-0	0-0	1-2-3	0	2	0	0	2
Lafayette	11-28-09	4	0-1	0-0	1-2	0-0-0	0	1	0	0	1
James Madison	12-01-09	7	0-0	0-0	0-0	0-0-0	0	1	0	0	0
Glenville St.	12-05-09	22	2-2	0-0	2-3	0-7-7	7	8	0	1	6
Auburn	12-15-09	10	1-1	0-0	0-0	0-2-2	0	0	0	1	2
Cornell	12-28-09	22	0-3	0-0	2-2	1-0-1	1	5	0	3	2
Virginia	12-29-09	12	1-2	0-0	0-0	1-0-1	0	3	0	0	2
Gardner-Webb	01-02-10	13	2-4	0-0	2-3	0-1-1	1	0	0	2	6
N.C. A&T	01-05-10	17	2-3	0-0	1-2	0-0-0	1	1	0	3	5
Winthrop	01-09-10	20	4-7	2-3	1-2	0-1-1	1	1	0	2	11
Longwood	01-12-10	15	2-6	0-1	2-2	0-3-3	3	2	0	1	6
Presbyterian	01-16-10	18	2-3	0-0	1-1	0-0-0	4	2	0	5	5
UNC Asheville	01-18-10	22	3-6	0-2	0-0	0-2-2	6	2	0	4	6
Charleston So.	01-23-10	13	0-2	0-1	2-3	0-1-1	0	3	0	0	2
Coastal Carolina	01-25-10	14	1-5	0-2	0-0	0-0-0	1	1	0	0	2
High Point	01-30-10	19	1-5	1-1	3-4	0-0-0	1	1	0	3	6
Radford	02-01-10	17	1-5	0-0	3-4	1-2-3	1	3	0	3	5
N.C. Central	02-04-10	12	0-3	0-2	0-0	1-0-1	1	1	0	0	0
Gardner-Webb	02-08-10	9	1-2	0-1	1-2	0-0-0	1	0	0	0	3
Winthrop	02-15-10	23	2-7	1-3	0-0	0-1-1	1	5	0	2	5
Coastal Carolina	02-20-10	14	1-2	0-0	1-2	0-1-1	1	1	0	0	3
Charleston So.	02-22-10	23	2-5	0-1	1-2	0-1-1	2	3	0	3	5

2009-10 Notes/Highlights

-- Tied for 15th in the Big South Conference with 1.5 steals per contest.

Career Stats

Season	GP	GS	Min	Avg	FG	FGA	Pct	3FG	3FGA	Pct	FT	FTA	Pct	ORB	DRB	TOT	Avg	Asst	TO	Blk	Stl	Pts	Avg
2009-10	25	0	399	16.0	35	89	.393	5	19	.263	25	36	.694	7	33	40	1.6	36	55	0	37	100	4.0



30

Brittany Campbell
6-0 R-Freshman Guard
Rustburg, Va.
Brookville HS

Career Highs

Points - 11
vs. Hartford (11-28-08)
FG Made - 4
vs. Hartford (11-28-08)
FG Attempts - 12
at James Madison (12-02-08)
3FG Made - 3
at James Madison (12-02-08)
3FG Attempts - 7
at James Madison (12-02-08)
FT Made - 3
vs. South Alabama (11-29-08)
FT Attempts - 3 (Two times)
Most recently, vs. S. Alabama (11-29-08)
Rebounds - 3 (Three times)
Most recently, at JMU (12-02-08)
Assists - 1
vs. Hartford (11-28-08)
Steals - 2
vs. South Alabama (11-29-08)
Blocks - 1
vs. South Alabama (11-29-08)

2009-10 Game-By-Game Statistics

OPPONENT	DATE	MIN	FG-FGA	3FG-FGA	FT-FTA	OFF-DEF-TOT	A	TO	BLK	STL	PTS
Winston-Salem St.	11-13-09										Did not play
UNC Greensboro	11-17-09										Did not play
Tulane	11-20-09										Did not play
Navy	11-21-09										Did not play
Lafayette	11-28-09										Did not play
James Madison	12-01-09										Did not play
Glenville St.	12-05-09										Did not play
Auburn	12-15-09										Did not play
Cornell	12-28-09										Did not play
Virginia	12-29-09										Did not play
Gardner-Webb	01-02-10										Did not play
N.C. A&T	01-05-10										Did not play
Winthrop	01-09-10										Did not play
Longwood	01-12-10										Did not play
Presbyterian	01-16-10										Did not play
UNC Asheville	01-18-10										Did not play
Charleston So.	01-23-10										Did not play
Coastal Carolina	01-25-10										Did not play
High Point	01-30-10										Did not play
Radford	02-01-10										Did not play
N.C. Central	02-04-10										Did not play
Gardner-Webb	02-08-10										Did not play
Winthrop	02-15-10										Did not play
Coastal Carolina	02-20-10										Did not play
Charleston So.	02-22-10										Did not play

2009-10 Notes/Highlights

-- Has missed the first 25 games of the 2009-10 season, due to a knee injury.

Career Stats

Season	GP	GS	Min	Avg	FG	FGA	Pct	3FG	3FGA	Pct	FT	FTA	Pct	ORB	DRB	TOT	Avg	Asst	TO	Blk	Stl	Pts	Avg
2008-09	5	1	104	20.8	11	31	.355	6	18	.333	7	9	.778	5	6	11	2.2	1	6	1	4	35	7.0



32

Rachel McLeod
5-10 Junior Guard
Houston, Texas
Home Schooled

Season Highs

Points - 11

vs. Presbyterian (01-16-10)

FG Made - 4 (Two times)

Most recently, vs. G.-Webb (02-08-10)

FG Attempts - 8 (Two times)

Most recently, vs. NCCU (02-04-10)

3FG Made - 2

vs. UNC Asheville (01-18-10)

3FG Attempts - 3 (Three times)

Most recently, vs. UNCA (01-18-10)

FT Made - 5

at Radford (02-01-10)

FT Attempts - 6

at Radford (02-01-10)

Rebounds - 8

at Gardner-Webb (01-02-10)

Assists - 7

vs. Glenville State (12-05-09)

Steals - 4

vs. UNC Asheville (01-18-10)

Blocks - 1

vs. Longwood (01-12-10)

Career Highs

Points - 13

at Coastal Carolina (02-21-09)

FG Made - 4 (Six times)

Most recently, vs. G.-Webb (02-08-10)

FG Attempts - 13

at Old Dominion (03-23-08)

3FG Made - 2 (Four times)

Most recently, vs. UNCA (01-18-10)

3FG Attempts - 5

at Old Dominion (03-23-08)

FT Made - 5 (Two times)

Most recently, at Radford (02-01-10)

FT Attempts - 6 (Two times)

Most recently, at Radford (02-01-10)

Rebounds - 8 (Two times)

Most recently, at G.-Webb (01-02-10)

Assists - 8

vs. High Point (03-15-08)

Steals - 4 (Two times)

Most recently, vs. UNCA (01-18-10)

Blocks - 1 (Eight times)

Most recently, vs. Longwood (01-12-10)

2009-10 Game-By-Game Statistics

OPPONENT	DATE	MIN	FG-FGA	3FG-FGA	FT-FTA	OFF-DEF-TOT	A	TO	BLK	STL	PTS
Winston-Salem St.	11-13-09	25	3-5	0-1	2-2	1-0-1	2	0	0	2	8
UNC Greensboro	11-17-09	25	1-7	0-3	0-0	0-1-1	2	3	0	2	2
Tulane	11-20-09	23	3-4	0-0	3-5	0-2-2	2	2	0	0	9
Navy	11-21-09	18	3-4	0-0	0-2	1-1-2	0	1	0	0	6
Lafayette	11-28-09	18	1-4	0-0	2-2	0-1-1	0	1	0	1	4
James Madison	12-01-09	23	3-6	0-3	2-2	0-1-1	0	4	0	1	8
Glenville St.	12-05-09	18	2-6	0-0	2-4	1-1-2	7	2	0	2	6
Auburn	12-15-09	22	0-6	0-0	2-2	0-1-1	1	1	0	0	2
Cornell	12-28-09	17	1-2	1-1	0-0	0-0-0	0	2	0	0	3
Virginia	12-29-09	19	2-2	0-0	1-1	0-2-2	0	3	0	0	5
Gardner-Webb	01-02-10	32	2-4	0-0	2-2	2-6-8	2	4	0	0	6
N.C. A&T	01-05-10	25	1-8	0-0	2-2	2-0-2	1	0	0	1	4
Winthrop	01-09-10	20	2-3	0-0	0-0	1-2-3	2	0	0	1	4
Longwood	01-12-10	27	2-6	0-0	1-2	0-2-2	4	2	1	0	5
Presbyterian	01-16-10	20	4-6	1-1	2-2	1-2-3	1	0	0	2	11
UNC Asheville	01-18-10	23	3-7	2-3	2-2	1-4-5	3	0	0	4	10
Charleston So.	01-23-10	29	0-3	0-0	3-4	1-1-2	1	1	0	0	3
Coastal Carolina	01-25-10	30	1-5	0-0	0-0	2-1-3	2	2	0	1	2
High Point	01-30-10	32	0-3	0-1	2-2	1-0-1	2	3	0	0	2
Radford	02-01-10	21	2-4	0-0	5-6	0-1-1	2	1	0	1	9
N.C. Central	02-04-10	30	3-8	0-0	0-0	2-2-4	1	1	0	0	6
Gardner-Webb	02-08-10	33	4-7	1-2	0-0	2-0-2	3	2	0	2	9
Winthrop	02-15-10	28	1-4	0-2	1-2	2-2-4	1	1	0	3	3
Coastal Carolina	02-20-10	24	0-2	0-0	0-0	0-2-2	3	1	0	0	0
Charleston So.	02-22-10	27	2-4	0-0	0-0	1-1-2	1	0	0	1	4

2009-10 Notes/Highlights

-- Scored in double figures in back-to-back games for the first time in her career, Jan. 16 vs. Presbyterian and Jan. 18 vs. UNC Asheville.

Career Stats

Season	GP	GS	Min	Avg	FG	FGA	Pct	3FG	3FGA	Pct	FT	FTA	Pct	ORB	DRB	TOT	Avg	Asst	TO	Blk	Stl	Pts	Avg
2007-08	32	0	531	16.6	50	108	.463	12	33	.364	27	41	.659	10	46	56	1.8	66	60	4	25	139	4.3
2008-09	30	5	622	20.7	39	120	.325	9	34	.265	34	45	.756	11	60	71	2.4	73	82	3	29	121	4.0
2009-10	25	25	609	24.4	46	120	.383	5	17	.294	34	44	.773	21	36	57	2.3	43	37	1	24	131	5.2
TOTAL	87	30	1762	20.3	135	348	.388	26	84	.310	95	130	.731	42	142	184	2.1	182	179	8	78	391	4.5



40

Devon Brown

*5-10 R-Freshman G
Waynesboro, Va.
Waynesboro HS*

Season/Career Highs

Points - 29

at High Point (01-30-10)

FG Made - 12

at High Point (01-30-10)

FG Attempts - 18

vs. Gardner-Webb (02-08-10)

3FG Made - 3 (Four times)

Most recently, vs. Presby. (01-16-10)

3FG Attempts - 6 (Three times)

Most recently, vs. CSU (02-22-10)

FT Made - 8 (Two times)

Most recently, at Radford (02-01-10)

FT Attempts - 9 (Two times)

Most recently, at Radford (02-01-10)

Rebounds - 13 (Four times)

Most recently, vs. G.-Webb (02-08-10)

Assists - 4 (Two times)

Most recently, at CSU (01-23-10)

Steals - 5 (Two times)

Most recently, vs. Coastal (02-20-10)

Blocks - 2 (Four times)

Most recently, at High Point (01-30-10)

2009-10 Game-By-Game Statistics

OPPONENT	DATE	MIN	FG-FGA	3FG-FGA	FT-FTA	OFF-DEF-TOT	A	TO	BLK	STL	PTS
Winston-Salem St.	11-13-09	22	11-14	3-5	1-1	4-3-7	1	2	0	0	26
UNC Greensboro	11-17-09	30	11-15	1-2	3-7	4-5-9	2	3	0	3	26
Tulane	11-20-09	32	6-13	3-4	3-6	3-9-12	1	2	2	1	18
Navy	11-21-09	33	4-13	3-5	8-9	3-8-11	2	1	0	5	19
Lafayette	11-28-09	20	8-14	1-3	0-0	2-1-3	4	2	0	1	17
James Madison	12-01-09	34	1-16	0-3	7-8	4-9-13	0	6	0	1	9
Glenville St.	12-05-09	18	8-11	0-1	4-6	2-7-9	2	1	0	0	20
Auburn	12-15-09	37	7-9	2-3	3-3	0-8-8	0	3	1	0	19
Cornell	12-28-09	23	8-14	1-3	1-3	1-5-6	1	2	1	2	18
Virginia	12-29-09	25	4-13	1-6	0-0	1-5-6	0	4	2	3	9
Gardner-Webb	01-02-10	31	2-11	1-4	4-4	3-8-11	0	2	0	3	9
N.C. A&T	01-05-10	32	6-15	1-5	4-7	4-9-13	3	3	1	2	17
Winthrop	01-09-10	23	8-16	2-6	3-3	1-5-6	1	1	0	2	21
Longwood	01-12-10	30	5-17	0-4	6-6	6-7-13	3	4	2	3	16
Presbyterian	01-16-10	21	5-8	3-5	0-0	1-4-5	3	1	1	2	13
UNC Asheville	01-18-10	25	5-10	2-4	0-0	2-6-8	2	4	1	0	12
Charleston So.	01-23-10	32	4-7	1-3	2-5	2-4-6	4	4	0	3	11
Coastal Carolina	01-25-10	29	6-16	1-3	4-4	2-8-10	1	1	1	4	17
High Point	01-30-10	39	12-17	0-3	5-8	1-10-11	2	4	2	1	29
Radford	02-01-10	32	6-12	0-3	8-9	3-8-11	1	2	0	3	20
N.C. Central	02-04-10	27	4-6	2-4	0-0	2-4-6	0	1	0	0	10
Gardner-Webb	02-08-10	37	5-18	1-4	2-2	4-9-13	1	3	0	2	13
Winthrop	02-15-10	20	7-16	1-5	0-0	3-2-5	2	2	0	1	15
Coastal Carolina	02-20-10	31	6-14	0-2	2-5	3-3-6	1	2	0	5	14
Charleston So.	02-22-10	33	7-16	1-6	5-6	4-8-12	2	6	1	2	20

2009-10 Notes/Highlights

-- Earned her second Big South Player of the Week award this season on Feb. 2, after posting 24.5 ppg and 11.0 rpg during Liberty's wins at High Point and Radford. Brown is one of three Big South players (also CSU's Kelsey Wasmer and GWU's Margaret Roundtree) to win the award multiple times this season.

-- Previously named Big South Player of the Week on Nov. 24, becoming the first Liberty freshman to capture the award since Megan Frazee (twice in 2005-06).

-- Ranks in the top 10 of seven different Big South statistical categories, including scoring (1st-16.7 ppg), defensive rebounds (1st-6.2 rpg), rebounding (2nd-8.8 rpg), field goal percentage (4th-.471), free throw percentage (4th-.735), offensive rebounds (6th-2.6 rpg) and steals (8th-2.0 spg).

-- Her 26 points versus Winston-Salem State (Nov. 13) equaled the Lady Rams' point total and were the most points by a Lady Flame in her collegiate debut since Elena Kisseleva scored 30 points versus Bluefield on Nov. 23, 1996.

-- Outscored Navy during the second half of the Navy Classic championship game (Nov. 21), 14-11. She was named the Championship Game All-Star, after tallying 19 points, 11 rebounds and a career-high five steals.

-- Has posted nine double-doubles this season (Nov. 20 vs. Tulane, Nov. 21 at Navy, Jan. 5 vs. North Carolina A&T, Jan. 12 vs. Longwood, Jan. 25 at Coastal Carolina, Jan. 30 at High Point, Feb. 1 at Radford, Feb. 8 vs. Gardner-Webb and Feb. 22 vs. Charleston Southern).

-- Has scored in double figures in 14 consecutive games.

Career Stats

Season	GP	GS	Min	Avg	FG	FGA	Pct	3FG	3FGA	Pct	FT	FTA	Pct	ORB	DRB	TOT	Avg	Asst	TO	Blk	Stl	Pts	Avg
2009-10	25	25	716	28.6	156	331	.471	31	96	.323	75	102	.735	65	155	220	8.8	39	66	15	49	418	16.7



43

Kittery Maine

6-4 Junior Forward

Bonaire, Ga.

Warner Robins HS

Career Highs

Points - 12

vs. Saint Paul's (12-13-08)

FG Made - 5

vs. Saint Paul's (12-13-08)

FG Attempts - 8

vs. Saint Paul's (12-13-08)

3FG Made - 0

None

3FG Attempts - 0

None

FT Made - 3

vs. Charleston So. (02-18-08)

FT Attempts - 4

vs. Charleston So. (02-18-08)

Rebounds - 7

vs. Saint Paul's (12-13-08)

Assists - 1 (Six times)

Most recently, vs. Radford (02-02-09)

Steals - 1 (Five times)

Most recently, vs. Winthrop (02-16-09)

Blocks - 3 (Two times)

Most recently, at W. Carolina (11-22-08)

2009-10 Game-By-Game Statistics

OPPONENT	DATE	MIN	FG-FGA	3FG-FGA	FT-FTA	OFF-DEF-TOT	A	TO	BLK	STL	PTS
Winston-Salem St.	11-13-09										Did not play
UNC Greensboro	11-17-09										Did not play
Tulane	11-20-09										Did not play
Navy	11-21-09										Did not play
Lafayette	11-28-09										Did not play
James Madison	12-01-09										Did not play
Glennville St.	12-05-09										Did not play
Auburn	12-15-09										Did not play
Cornell	12-28-09										Did not play
Virginia	12-29-09										Did not play
Gardner-Webb	01-02-10										Did not play
N.C. A&T	01-05-10										Did not play
Winthrop	01-09-10										Did not play
Longwood	01-12-10										Did not play
Presbyterian	01-16-10										Did not play
UNC Asheville	01-18-10										Did not play
Charleston So.	01-23-10										Did not play
Coastal Carolina	01-25-10										Did not play
High Point	01-30-10										Did not play
Radford	02-01-10										Did not play
N.C. Central	02-04-10										Did not play
Gardner-Webb	02-08-10										Did not play
Winthrop	02-15-10										Did not play
Coastal Carolina	02-20-10										Did not play
Charleston So.	02-22-10										Did not play

2009-10 Notes/Highlights

-- Has missed the first 25 games of the 2009-10 season, due to a knee injury.

Career Stats

Season	GP	GS	Min	Avg	FG	FGA	Pct	3FG	3FGA	Pct	FT	FTA	Pct	ORB	DRB	TOT	Avg	Asst	TO	Blk	Stl	Pts	Avg
2007-08	28	0	202	7.2	22	30	.733	0	0	.000	10	18	.556	13	28	41	1.5	3	18	6	3	54	1.9
2008-09	24	0	197	8.2	20	41	.488	0	0	.000	2	4	.500	17	30	47	2.0	3	12	7	2	42	1.8
TOTAL	52	0	399	7.7	42	71	.592	0	0	.000	12	22	.545	30	58	88	1.7	6	30	13	5	96	1.8



54

Carra Coy

*6-6 Freshman Forward
Summerville, S.C.
Northwood Academy*

Season/Career Highs

Points - 3 (Three times)

Most recently, vs. Coastal (02-20-10)

FG Made - 1 (Eight times)

Most recently, vs. Coastal (02-20-10)

FG Attempts - 4 (Two times)

at Winthrop (02-15-10)

3FG Made - 0

None

3FG Attempts - 0

None

FT Made - 2

vs. Glensville State (12-05-09)

FT Attempts - 2 (Five times)

Most recently, vs. Coastal (02-20-10)

Rebounds - 4 (Three times)

Most recently, at Winthrop (02-15-10)

Assists - 1

vs. Coastal (02-20-10)

Steals - 1 (Two times)

Most recently, vs. NCCU (02-04-10)

Blocks - 2

vs. UNC Greensboro (11-17-09)

2009-10 Game-By-Game Statistics

OPPONENT	DATE	MIN	FG-FGA	3FG-FGA	FT-FTA	OFF-DEF-TOT	A	TO	BLK	STL	PTS
Winston-Salem St.	11-13-09	19	1-3	0-0	1-2	0-1-1	0	2	1	0	3
UNC Greensboro	11-17-09	14	1-2	0-0	0-0	1-3-4	0	0	2	0	2
Tulane	11-20-09					Did not play					
Navy	11-21-09					Did not play					
Lafayette	11-28-09	17	1-1	0-0	0-0	0-1-1	0	1	0	1	2
James Madison	12-01-09	7	0-0	0-0	0-0	1-0-1	0	1	0	0	0
Glensville St.	12-05-09	15	0-1	0-0	2-2	1-3-4	0	3	1	0	2
Auburn	12-15-09					Did not play					
Cornell	12-28-09	15	1-2	0-0	1-2	0-2-2	0	1	1	0	3
Virginia	12-29-09					Did not play					
Gardner-Webb	01-02-10	5	0-0	0-0	0-0	0-1-1	0	1	0	0	0
N.C. A&T	01-05-10	4	1-1	0-0	0-0	0-0-0	0	0	0	0	2
Winthrop	01-09-10	9	0-4	0-0	0-0	2-1-3	0	0	1	0	0
Longwood	01-12-10	5	0-0	0-0	0-1	1-0-1	0	0	0	0	0
Presbyterian	01-16-10	15	0-1	0-0	0-1	1-1-2	0	1	1	0	0
UNC Asheville	01-18-10	10	1-1	0-0	0-0	1-0-1	0	1	1	0	2
Charleston So.	01-23-10	4	0-0	0-0	0-0	0-1-1	0	1	0	0	0
Coastal Carolina	01-25-10					Did not play					
High Point	01-30-10	1	0-0	0-0	0-0	0-0-0	0	0	0	0	0
Radford	02-01-10	6	0-0	0-0	0-2	1-0-1	0	0	0	0	0
N.C. Central	02-04-10	6	0-1	0-0	0-0	0-0-0	0	0	0	1	0
Gardner-Webb	02-08-10					Did not play					
Winthrop	02-15-10	14	1-4	0-0	0-0	3-1-4	0	0	0	0	2
Coastal Carolina	02-20-10	8	1-1	0-0	1-2	3-0-3	1	1	0	0	3
Charleston So.	02-22-10	2	0-0	0-0	0-0	0-0-0	0	0	0	0	0

2009-10 Notes/Highlights

Career Stats

Season	GP	GS	Min	Avg	FG	FGA	Pct	3FG	3FGA	Pct	FT	FTA	Pct	ORB	DRB	TOT	Avg	Asst	TO	Blk	Stl	Pts	Avg
2009-10	19	0	176	9.3	8	22	.364	0	0	.000	5	12	.417	15	15	30	1.6	1	13	8	2	21	1.1

Official Basketball Box Score -- Game Totals -- Final Statistics

Charleston Southern vs Liberty

02-22-10 7:05 p.m. at Lynchburg, Va. (Vines Center)

VISITORS: Charleston Southern 15-11, 7-6 BSC

##	Player Name	TOT-FG	3-PT	FG-FGA	FT-FTA	REBOUNDS			PF	TP	A	TO	BLK	S	MIN
						OF	DE	TOT							
44	RUSH, LeChell.....	f	4-7	0-0	1-3	1	3	4	4	9	1	1	0	1	28
22	WASMER, Kelsey.....	g	6-11	4-8	3-4	1	2	3	5	19	1	5	0	1	35
25	TULL, Katie.....	g	0-5	0-3	0-0	0	0	0	1	0	7	2	0	0	35
32	JONES, Shay.....	g	0-0	0-0	2-2	0	0	0	2	2	0	3	0	0	10
45	DECARVALHO, Tina....	g	2-3	2-3	2-3	1	1	2	1	8	2	2	0	0	18
12	TERRY, Helen.....		5-12	4-9	2-2	0	2	2	2	16	1	2	0	1	31
15	PENICK, Kori.....		0-0	0-0	0-2	1	1	2	4	0	0	0	0	0	14
24	ALSTON, Lakeitha....		1-3	0-2	0-0	0	0	0	2	2	1	3	0	0	20
42	GIBSON, Danielle....		0-0	0-0	0-0	0	0	0	1	0	0	3	0	0	9
	TEAM.....					1	2	3				1			
	Totals.....		18-41	10-25	10-16	5	11	16	22	56	13	22	0	3	200

TOTAL FG% 1st Half: 9-20 45.0% 2nd Half: 9-21 42.9% Game: 43.9% DEADB
 3-Pt. FG% 1st Half: 7-13 53.8% 2nd Half: 3-12 25.0% Game: 40.0% REBS
 F Throw % 1st Half: 4-7 57.1% 2nd Half: 6-9 66.7% Game: 62.5% 3

HOME TEAM: Liberty 20-5, 10-2 BSC

##	Player Name	TOT-FG	3-PT	FG-FGA	FT-FTA	REBOUNDS			PF	TP	A	TO	BLK	S	MIN
						OF	DE	TOT							
15	BEECHER, Kylee.....	f	0-3	0-1	4-4	1	1	2	1	4	1	1	0	0	28
23	WARLEY, Avery.....	f	9-9	0-0	4-9	6	4	10	3	22	1	2	0	3	34
21	MAYS, Amber.....	g	2-3	0-0	2-4	0	0	0	4	6	0	5	0	1	20
32	McLEOD, Rachel.....	g	2-4	0-0	0-0	1	1	2	0	4	1	0	0	1	27
40	BROWN, Devon.....	g	7-16	1-6	5-6	4	8	12	3	20	2	6	1	2	33
01	WASHINGTON, LaKendra		0-0	0-0	0-0	1	0	1	1	0	0	1	0	0	5
11	ANTIC, Jelena.....		2-4	0-0	0-2	2	4	6	3	4	3	3	0	1	19
12	DALE, Danika.....		0-0	0-0	1-2	0	0	0	0	1	0	0	0	0	9
25	MORGAN, Dymond.....		2-5	0-1	1-2	0	1	1	3	5	2	3	0	3	23
54	COY, Carra.....		0-0	0-0	0-0	0	0	0	1	0	0	0	0	0	2
	TEAM.....					2	2	4				1			
	Totals.....		24-44	1-8	17-29	17	21	38	19	66	10	22	1	11	200

TOTAL FG% 1st Half: 13-24 54.2% 2nd Half: 11-20 55.0% Game: 54.5% DEADB
 3-Pt. FG% 1st Half: 1-5 20.0% 2nd Half: 0-3 0.0% Game: 12.5% REBS
 F Throw % 1st Half: 7-15 46.7% 2nd Half: 10-14 71.4% Game: 58.6% 4

Officials: Tony Lippa (R), John Almarode, Kristina Denson

Technical fouls: Charleston Southern-None. Liberty-None.

Attendance: 781

Score by Periods	1st	2nd	Total
Charleston Southern.....	29	27	56
Liberty.....	34	32	66

Fouled Out:

CSU - #22 (2:17, 2nd)

Points in the paint-CSU 16,LIBERTY 44. Points off turnovers-CSU 23,LIBERTY 29.

2nd chance points-CSU 6,LIBERTY 22. Fast break points-CSU 2,LIBERTY 8.

Bench points-CSU 18,LIBERTY 10. Score tied-4 times. Lead changed-6 times.

Last FG-CSU 2nd-00:20, LIBERTY 2nd-02:13.

Largest lead-CSU by 2 1st-09:22, LIBERTY by 17 2nd-02:13.

Official Basketball Box Score -- Game Totals -- Final Statistics

UNC Asheville vs Liberty

01-18-10 7:05 p.m. at Lynchburg, Va. (Vines Center)

VISITORS: UNC Asheville 5-13, 1-5 BSC

##	Player Name	TOT-FG			3-PT			REBOUNDS			PF	TP	A	TO	BLK	S	MIN
		FG	FGA	FGA	FT	FTA	OF	DE	TOT								
21	MONTGOMERY, Lindsey. f	2	7	0	0	6	8	1	7	8	3	10	1	4	1	0	31
35	RAINEY, Kiana..... f	1	5	0	0	0	0	2	1	3	2	2	1	1	0	0	21
04	SHEPARD, Kendall.... g	4	9	1	2	0	0	1	1	2	2	9	4	7	0	5	37
05	OKOLI, Chioma..... g	1	7	0	0	0	0	1	1	2	0	2	0	0	0	0	17
12	THOMPSON, Lindsey... g	2	3	2	3	0	0	1	0	1	1	6	1	4	0	0	19
13	RILES, Kelli.....	1	5	0	0	1	4	1	0	1	5	3	0	1	0	0	20
14	BARKSDALE, Breaira..	0	0	0	0	0	0	0	0	0	0	0	0	2	0	0	3
20	WAGNER, Dana.....	1	4	1	2	0	0	0	0	0	0	3	0	1	0	1	8
22	AUGHBURNS, Linda....	0	4	0	0	0	0	2	1	3	1	0	0	1	0	2	25
24	BLAYLOCK, Grace....	1	5	1	4	0	0	0	1	1	1	3	1	2	0	0	10
32	WISE, Katie.....	1	1	0	0	0	0	0	0	0	4	2	0	1	0	0	2
44	WHEATON, Mackenzie..	0	1	0	1	0	0	0	1	1	0	0	1	0	0	1	7
	TEAM.....							4	1	5				1			
	Totals.....	14	51	5	12	7	12	13	14	27	19	40	9	25	1	9	200

TOTAL FG% 1st Half: 7-28 25.0% 2nd Half: 7-23 30.4% Game: 27.5% DEADB
 3-Pt. FG% 1st Half: 2-5 40.0% 2nd Half: 3-7 42.9% Game: 41.7% REBS
 F Throw % 1st Half: 1-4 25.0% 2nd Half: 6-8 75.0% Game: 58.3% 4

HOME TEAM: Liberty 12-4, 3-1 BSC

##	Player Name	TOT-FG			3-PT			REBOUNDS			PF	TP	A	TO	BLK	S	MIN
		FG	FGA	FGA	FT	FTA	OF	DE	TOT								
11	ANTIC, Jelena..... f	3	5	1	1	0	0	4	0	4	2	7	0	3	0	0	18
23	WARLEY, Avery..... f	2	8	0	0	2	6	4	6	10	0	6	2	2	3	0	24
21	MAYS, Amber..... g	5	8	2	2	2	2	1	0	1	0	14	5	0	0	3	23
32	McLEOD, Rachel..... g	3	7	2	3	2	2	1	4	5	1	10	3	0	0	4	23
40	BROWN, Devon..... g	5	10	2	4	0	0	2	6	8	2	12	2	4	1	0	25
01	WASHINGTON, LaKendra	2	6	2	4	0	3	1	0	1	2	6	0	2	0	4	16
12	DALE, Danika.....	2	4	0	1	1	1	2	1	3	0	5	1	2	1	1	12
15	BEECHER, Kylee.....	3	8	0	0	8	10	2	3	5	2	14	2	2	0	2	27
25	MORGAN, Dymond.....	3	6	0	2	0	0	0	2	2	2	6	6	2	0	4	22
54	COY, Carra.....	1	1	0	0	0	0	1	0	1	0	2	0	1	1	0	10
	TEAM.....							6	3	9							
	Totals.....	29	63	9	17	15	24	24	25	49	11	82	21	18	6	18	200

TOTAL FG% 1st Half: 15-34 44.1% 2nd Half: 14-29 48.3% Game: 46.0% DEADB
 3-Pt. FG% 1st Half: 4-7 57.1% 2nd Half: 5-10 50.0% Game: 52.9% REBS
 F Throw % 1st Half: 7-11 63.6% 2nd Half: 8-13 61.5% Game: 62.5% 5

Officials: Karen Gruca (R), Tom Baldinelli, Clark Bennett

Technical fouls: UNC Asheville-None. Liberty-None.

Attendance: 826

Score by Periods	1st	2nd	Total
UNC Asheville.....	17	23	40
Liberty.....	41	41	82

Fouled Out: #13 (1:23, 2nd)

Points in the paint-UNCA 12,LIBERTY 38. Points off turnovers-UNCA 12,LIBERTY 33.

2nd chance points-UNCA 11,LIBERTY 23. Fast break points-UNCA 6,LIBERTY 6.

Bench points-UNCA 11,LIBERTY 33. Score tied-2 times. Lead changed-0 times.

Last FG-UNCA 2nd-01:11, LIBERTY 2nd-00:47.

Largest lead-UNCA None, LIBERTY by 46 2nd-05:14.

2009-10 Liberty Women's Basketball
 Liberty Game-by-Game Highs (as of Feb 25, 2010)
 All games

Opponent	Date	Score	WL	POINTS	REBOUNDS	ASSISTS	STEALS	BLOCKED SHOTS
WINSTON-SALEM STATE	11-13-09	71-26	W	26-BROWN, Devon	9-WARLEY, Avery	6-MAYS, Amber	5-WASHINGTON, L	2-DALE, Danika
UNC GREENSBORO	11-17-09	60-42	W	26-BROWN, Devon	9-BROWN, Devon	4-MAYS, Amber	4-MAYS, Amber	2-COY, Carra DALE, Danika
vs Tulane	11-20-09	63-52	W	18-BROWN, Devon	12-BROWN, Devon	3-MAYS, Amber	4-MAYS, Amber	2-BROWN, Devon
at Navy	11-21-09	55-43	W	19-BROWN, Devon	11-BROWN, Devon	5-MAYS, Amber	5-BROWN, Devon	None
at Lafayette	11-28-09	90-55	W	21-WASHINGTON, L	11-WARLEY, Avery	4-BROWN, Devon MAYS, Amber	4-WASHINGTON, L MAYS, Amber	1-BEECHER, Kyle
JAMES MADISON	12-01-09	50-60	L	14-MAYS, Amber	13-BROWN, Devon	2-MAYS, Amber WARLEY, Avery	2-BEECHER, Kyle	2-DALE, Danika
GLENVILLE STATE	12-05-09	86-45	W	20-BROWN, Devon	10-ANTIC, Jelena	7-MCLEOD, Rache MORGAN, Dymon	3-DALE, Danika	1-WARLEY, Avery COY, Carra
at Auburn	12-15-09	64-70	L	19-BROWN, Devon	8-BROWN, Devon	3-MAYS, Amber	4-MAYS, Amber	1-BROWN, Devon
vs Cornell	12-28-09	70-40	W	18-BROWN, Devon	8-ANTIC, Jelena	8-MAYS, Amber	4-MAYS, Amber	1-COY, Carra WARLEY, Avery BROWN, Devon WASHINGTON, L
at Virginia	12-29-09	54-63	L	12-WARLEY, Avery	8-WARLEY, Avery	3-ANTIC, Jelena MAYS, Amber	3-BROWN, Devon MAYS, Amber	2-BROWN, Devon
at Gardner-Webb	01-02-10	65-70	L	10-DALE, Danika ANTIC, Jelena MAYS, Amber WARLEY, Avery	11-BROWN, Devon	6-MAYS, Amber	3-BROWN, Devon WARLEY, Avery	1-WARLEY, Avery
NORTH CAROLINA A&T	01-05-10	57-51	W	17-BROWN, Devon	13-BROWN, Devon	4-ANTIC, Jelena	3-MORGAN, Dymon	1-BEECHER, Kyle BROWN, Devon ANTIC, Jelena
WINTHROP	01-09-10	67-38	W	21-BROWN, Devon	6-BROWN, Devon ANTIC, Jelena	10-MAYS, Amber	3-WASHINGTON, L	1-WARLEY, Avery BEECHER, Kyle COY, Carra
LONGWOOD	01-12-10	78-55	W	19-ANTIC, Jelena	13-BROWN, Devon	4-MCLEOD, Rache	5-MAYS, Amber	2-BROWN, Devon
PRESBYTERIAN COLLEGE	01-16-10	73-27	W	14-ANTIC, Jelena	5-BROWN, Devon DALE, Danika	6-MAYS, Amber	5-MORGAN, Dymon	1-BROWN, Devon COY, Carra
UNC ASHEVILLE	01-18-10	82-40	W	14-BEECHER, Kyle MAYS, Amber	10-WARLEY, Avery	6-MORGAN, Dymon	4-WASHINGTON, L McLEOD, Rache MORGAN, Dymon	3-WARLEY, Avery
at Charleston Southern	01-23-10	65-52	W	18-WARLEY, Avery	16-WARLEY, Avery	4-BROWN, Devon	3-BROWN, Devon	1-MAYS, Amber
at Coastal Carolina	01-25-10	57-38	W	17-BROWN, Devon	12-WARLEY, Avery	2-MCLEOD, Rache MAYS, Amber DALE, Danika	4-BROWN, Devon	1-WARLEY, Avery BROWN, Devon DALE, Danika
at High Point	01-30-10	75-62	W	29-BROWN, Devon	14-WARLEY, Avery	2-MAYS, Amber BEECHER, Kyle McLEOD, Rache BROWN, Devon	3-MORGAN, Dymon	2-BROWN, Devon
at Radford	02-01-10	63-45	W	20-BROWN, Devon	11-BROWN, Devon	7-MAYS, Amber	3-BROWN, Devon MAYS, Amber BEECHER, Kyle MORGAN, Dymon	2-WARLEY, Avery DALE, Danika
N.C. CENTRAL	02-04-10	64-44	W	16-WARLEY, Avery	11-WARLEY, Avery	8-MAYS, Amber	3-WASHINGTON, L	1-WASHINGTON, L WARLEY, Avery DALE, Danika
GARDNER-WEBB	02-08-10	56-59	L	15-WARLEY, Avery	13-BROWN, Devon	3-MAYS, Amber McLEOD, Rache	2-MCLEOD, Rache BROWN, Devon MAYS, Amber	2-WARLEY, Avery
at Winthrop	02-15-10	52-18	W	15-BROWN, Devon	8-WARLEY, Avery	2-BROWN, Devon	3-WASHINGTON, L	3-WARLEY, Avery

2009-10 Liberty Women's Basketball
 Liberty Game-by-Game Highs (as of Feb 25, 2010)
 All games

Opponent	Date	Score	WL	POINTS	REBOUNDS	ASSISTS	STEALS	BLOCKED SHOTS
							McLEOD, Rache	
COASTAL CAROLINA	02-20-10	57-55	W	14-BROWN, Devon	8-WARLEY, Avery	3-McLEOD, Rache	5-BROWN, Devon	1-WARLEY, Avery
CHARLESTON SOUTHERN	02-22-10	66-56	W	22-WARLEY, Avery	12-BROWN, Devon	3-ANTIC, Jelena	3-WARLEY, Avery	1-BROWN, Devon
							MORGAN, Dymon	

2009-10 Liberty Women's Basketball
 Liberty Game-by-Game Points-Rebounds-Assists (as of Feb 25, 2010)
 All games

Opponent	Date	Score	WL	01	11	12	15	21	23	25	32	40
				WASHINGTO	ANTIC,JEL	DALE,DANI	BEECHER,K	MAYS,AMBE	WARLEY,AV	MORGAN,DY	MCLEOD,RA	BROWN,DEV
WINSTON-SALEM STATE	11-13-09	71-26	W	9- 2- 1	DNP	6- 7- 3	8- 2- 2	7- 0- 6	4- 9- 2	0- 4- 1	8- 1- 2	26- 7- 1
UNC GREENSBORO	11-17-09	60-42	W	2- 0- 0	DNP	0- 4- 0	11- 5- 0	11- 1- 4	0- 7- 0	6- 5- 2	2- 1- 2	26- 9- 2
vs Tulane	11-20-09	63-52	W	2- 1- 0	DNP	0- 1- 1	6- 3- 2	10- 2- 3	9-11- 1	9- 2- 0	9- 2- 2	18-12- 1
at Navy	11-21-09	55-43	W	6- 4- 0	0- 5- 3	0- 2- 1	4- 2- 0	8- 2- 5	10- 6- 0	2- 3- 0	6- 2- 0	19-11- 2
at Lafayette	11-28-09	90-55	W	21- 0- 2	4- 4- 2	6- 4- 1	5- 3- 2	11- 4- 4	19-11- 0	1- 0- 0	4- 1- 0	17- 3- 4
JAMES MADISON	12-01-09	50-60	L	2- 1- 0	1- 4- 0	3- 5- 1	4- 6- 1	14- 2- 2	9- 7- 2	0- 0- 0	8- 1- 0	9-13- 0
GLENVILLE STATE	12-05-09	86-45	W	8- 5- 2	12-10- 0	6- 9- 3	14- 6- 0	5- 2- 4	7- 6- 0	6- 7- 7	6- 2- 7	20- 9- 2
at Auburn	12-15-09	64-70	L	2- 1- 0	4- 3- 1	0- 0- 0	7- 0- 1	18- 1- 3	10- 6- 0	2- 2- 0	2- 1- 1	19- 8- 0
vs Cornell	12-28-09	70-40	W	9- 5- 2	11- 8- 2	5- 7- 2	5- 3- 0	4- 2- 8	10- 7- 0	2- 1- 1	3- 0- 0	18- 6- 1
at Virginia	12-29-09	54-63	L	5- 5- 1	5- 3- 3	3- 4- 0	6- 2- 0	7- 0- 3	12- 8- 0	2- 1- 0	5- 2- 0	9- 6- 0
at Gardner-Webb	01-02-10	65-70	L	0- 0- 0	10- 5- 1	10- 0- 1	4- 3- 0	10- 5- 6	10- 6- 0	6- 1- 1	6- 8- 2	9-11- 0
NORTH CAROLINA A&T	01-05-10	57-51	W	0- 2- 0	14- 4- 4	2- 2- 1	0- 3- 0	4- 2- 3	9-11- 0	5- 0- 1	4- 2- 1	17-13- 3
WINTHROP	01-09-10	67-38	W	5- 1- 1	9- 6- 1	4- 5- 3	5- 2- 2	3- 0-10	5- 5- 1	11- 1- 1	4- 3- 2	21- 6- 1
LONGWOOD	01-12-10	78-55	W	1- 2- 1	19-10- 2	2- 4- 1	10- 6- 1	7- 0- 3	12- 5- 1	6- 3- 3	5- 2- 4	16-13- 3
PRESBYTERIAN COLLEGE	01-16-10	73-27	W	6- 3- 0	14- 3- 1	5- 5- 1	5- 3- 1	8- 2- 6	6- 2- 0	5- 0- 4	11- 3- 1	13- 5- 3
UNC ASHEVILLE	01-18-10	82-40	W	6- 1- 0	7- 4- 0	5- 3- 1	14- 5- 2	14- 1- 5	6-10- 2	6- 2- 6	10- 5- 3	12- 8- 2
at Charleston Southern	01-23-10	65-52	W	4- 1- 0	DNP	3- 4- 2	10- 9- 0	14- 0- 3	18-16- 0	2- 1- 0	3- 2- 1	11- 6- 4
at Coastal Carolina	01-25-10	57-38	W	7- 1- 0	DNP	0- 4- 2	6- 9- 1	8- 2- 2	15-12- 0	2- 0- 1	2- 3- 2	17-10- 1
at High Point	01-30-10	75-62	W	0- 0- 0	DNP	2- 2- 0	3- 4- 2	7- 5- 2	26-14- 0	6- 0- 1	2- 1- 2	29-11- 2
at Radford	02-01-10	63-45	W	0- 0- 1	DNP	2- 1- 0	13- 9- 0	10- 1- 7	4- 5- 0	5- 3- 1	9- 1- 2	20-11- 1
N.C. CENTRAL	02-04-10	64-44	W	6- 2- 2	DNP	15- 3- 2	3- 2- 4	8- 2- 8	16-11- 0	0- 1- 1	6- 4- 1	10- 6- 0
GARDNER-WEBB	02-08-10	56-59	L	0- 0- 1	DNP	6- 0- 0	4- 4- 2	6- 1- 3	15-10- 0	3- 0- 1	9- 2- 3	13-13- 1
at Winthrop	02-15-10	52-18	W	2- 2- 1	DNP	11- 5- 0	9- 5- 1	1- 1- 1	4- 8- 1	5- 1- 1	3- 4- 1	15- 5- 2
COASTAL CAROLINA	02-20-10	57-55	W	4- 1- 0	2- 3- 1	5- 0- 0	9- 1- 0	12- 3- 2	5- 8- 1	3- 1- 1	0- 2- 3	14- 6- 1
CHARLESTON SOUTHERN	02-22-10	66-56	W	0- 1- 0	4- 6- 3	1- 0- 0	4- 2- 1	6- 0- 0	22-10- 1	5- 1- 2	4- 2- 1	20-12- 2

54

Opponent	Date	Score	WL	54
				COY,CARRA
WINSTON-SALEM STATE	11-13-09	71-26	W	3- 1- 0
UNC GREENSBORO	11-17-09	60-42	W	2- 4- 0
vs Tulane	11-20-09	63-52	W	DNP
at Navy	11-21-09	55-43	W	DNP
at Lafayette	11-28-09	90-55	W	2- 1- 0
JAMES MADISON	12-01-09	50-60	L	0- 1- 0
GLENVILLE STATE	12-05-09	86-45	W	2- 4- 0
at Auburn	12-15-09	64-70	L	DNP
vs Cornell	12-28-09	70-40	W	3- 2- 0
at Virginia	12-29-09	54-63	L	DNP
at Gardner-Webb	01-02-10	65-70	L	0- 1- 0
NORTH CAROLINA A&T	01-05-10	57-51	W	2- 0- 0
WINTHROP	01-09-10	67-38	W	0- 3- 0
LONGWOOD	01-12-10	78-55	W	0- 1- 0
PRESBYTERIAN COLLEGE	01-16-10	73-27	W	0- 2- 0
UNC ASHEVILLE	01-18-10	82-40	W	2- 1- 0
at Charleston Southern	01-23-10	65-52	W	0- 1- 0
at Coastal Carolina	01-25-10	57-38	W	DNP
at High Point	01-30-10	75-62	W	0- 0- 0
at Radford	02-01-10	63-45	W	0- 1- 0
N.C. CENTRAL	02-04-10	64-44	W	0- 0- 0
GARDNER-WEBB	02-08-10	56-59	L	DNP
at Winthrop	02-15-10	52-18	W	2- 4- 0
COASTAL CAROLINA	02-20-10	57-55	W	3- 3- 1
CHARLESTON SOUTHERN	02-22-10	66-56	W	0- 0- 0

2009-10 Liberty Women's Basketball
 Liberty Player High/Low Analysis (as of Feb 25, 2010)
 All games

Liberty - INDIVIDUAL GAME HIGHS

Points.....	29	BROWN, Devon at High Point (01-30-10)
	26	WARLEY, Avery at High Point (01-30-10)
	26	BROWN, Devon vs UNC Greensboro (11-17-09)
	26	BROWN, Devon vs Winston-Salem State (11-13-09)
	22	WARLEY, Avery vs Charleston Southern (02-22-10)
Field Goals Made.....	12	BROWN, Devon at High Point (01-30-10)
	11	BROWN, Devon vs UNC Greensboro (11-17-09)
	11	BROWN, Devon vs Winston-Salem State (11-13-09)
Field Goal Att.....	18	BROWN, Devon vs Gardner-Webb (02-08-10)
	17	BROWN, Devon at High Point (01-30-10)
	17	BROWN, Devon vs Longwood (01-12-10)
FG Pct (min 5 made).....	1.000 (9-9)	WARLEY, Avery vs Charleston Southern (02-22-10)
	1.000 (7-7)	ANTIC, Jelena vs Presbyterian College (01-16-10)
3-Point FG Made.....	3	BROWN, Devon vs Presbyterian College (01-16-10)
	3	BROWN, Devon at Navy (11-21-09)
	3	BROWN, Devon vs Tulane (11-20-09)
	3	BROWN, Devon vs Winston-Salem State (11-13-09)
3-Point FG Att.....	6	BROWN, Devon vs Charleston Southern (02-22-10)
	6	BROWN, Devon vs Winthrop (01-09-10)
	6	BROWN, Devon at Virginia (12-29-09)
	6	WASHINGTON, LaKendra vs Winston-Salem State (11-13-09)
3-Pt FG Pct (min 2 made).....	1.000 (2-2)	WASHINGTON, LaKendra at Coastal Carolina (01-25-10)
	1.000 (2-2)	MAYS, Amber vs UNC Asheville (01-18-10)
	1.000 (2-2)	ANTIC, Jelena at Gardner-Webb (01-02-10)
Free Throws Made.....	8	BROWN, Devon at Radford (02-01-10)
	8	WARLEY, Avery at High Point (01-30-10)
	8	BEECHER, Kylee vs UNC Asheville (01-18-10)
	8	BROWN, Devon at Navy (11-21-09)
Free Throw Att.....	11	WARLEY, Avery at High Point (01-30-10)
	10	BEECHER, Kylee vs UNC Asheville (01-18-10)
FT Pct (min 3 made).....	1.000 (6-6)	BROWN, Devon vs Longwood (01-12-10)
	1.000 (4-4)	BEECHER, Kylee vs Charleston Southern (02-22-10)
	1.000 (4-4)	BROWN, Devon at Coastal Carolina (01-25-10)
	1.000 (4-4)	BROWN, Devon at Gardner-Webb (01-02-10)
	1.000 (4-4)	DALE, Danika vs Winston-Salem State (11-13-09)
	1.000 (4-4)	BEECHER, Kylee vs Winston-Salem State (11-13-09)
	1.000 (3-3)	DALE, Danika at Winthrop (02-15-10)
	1.000 (3-3)	BROWN, Devon vs Winthrop (01-09-10)
	1.000 (3-3)	BROWN, Devon at Auburn (12-15-09)
	1.000 (3-3)	WARLEY, Avery at Lafayette (11-28-09)
Rebounds.....	16	WARLEY, Avery at Charleston Southern (01-23-10)
	14	WARLEY, Avery at High Point (01-30-10)
Assists.....	10	MAYS, Amber vs Winthrop (01-09-10)
	8	MAYS, Amber vs N.C. Central (02-04-10)
	8	MAYS, Amber vs Cornell (12-28-09)
Steals.....	5	BROWN, Devon vs Coastal Carolina (02-20-10)
	5	MORGAN, Dymond vs Presbyterian College (01-16-10)
	5	MAYS, Amber vs Longwood (01-12-10)
	5	BROWN, Devon at Navy (11-21-09)
	5	WASHINGTON, LaKendra vs Winston-Salem State (11-13-09)
Blocked Shots.....	3	WARLEY, Avery at Winthrop (02-15-10)
	3	WARLEY, Avery vs UNC Asheville (01-18-10)
Turnovers.....	8	MORGAN, Dymond vs Glenville State (12-05-09)

2009-10 Liberty Women's Basketball
 Liberty High/Low Analysis (as of Feb 25, 2010)
 All games

OPPONENT INDIVIDUAL GAME HIGHS

Points.....	22	Jackson, Lauren at Lafayette (11-28-09)
	20	MOSS, Sydnei at Coastal Carolina (01-25-10)
	19	WASMER, Kelsey vs Charleston Southern (02-22-10)
	19	MOSS, Sydnei vs Coastal Carolina (02-20-10)
	19	STULL, Amanda vs Coastal Carolina (02-20-10)
	19	Wright, Monica at Virginia (12-29-09)
Field Goals Made.....	7	MOSS, Sydnei vs Coastal Carolina (02-20-10)
	7	Wright, Monica at Virginia (12-29-09)
Field Goal Att.....	20	MILLER, Joanna vs N.C. Central (02-04-10)
	17	MOSS, Sydnei at Coastal Carolina (01-25-10)
FG Pct (min 5 made).....	.833 (5-6)	BROWN, Shamia at High Point (01-30-10)
	.833 (5-6)	SAMS,Jaleesa vs North Carolina A&T (01-05-10)
	.833 (5-6)	McCall, Telia at Virginia (12-29-09)
3-Point FG Made.....	5	STULL, Amanda vs Coastal Carolina (02-20-10)
	4	TERRY, Helen vs Charleston Southern (02-22-10)
	4	WASMER, Kelsey vs Charleston Southern (02-22-10)
	4	MOSS, Sydnei at Coastal Carolina (01-25-10)
	4	Smalley, Alli at Auburn (12-15-09)
	4	KALJO, Indira vs Tulane (11-20-09)
3-Point FG Att.....	12	KALJO, Indira vs Tulane (11-20-09)
	11	Autumn Davis vs Glenville State (12-05-09)
3-Pt FG Pct (min 2 made).....	1.000 (3-3)	HUDSON, Dominique vs Gardner-Webb (02-08-10)
	1.000 (2-2)	BLANKS, Shanise vs N.C. Central (02-04-10)
Free Throws Made.....	7	HUDSON, Monique at Gardner-Webb (01-02-10)
	7	Greenleaf, Jordan at Auburn (12-15-09)
	7	Hislop, Tarik vs James Madison (12-01-09)
	7	Jackson, Lauren at Lafayette (11-28-09)
Free Throw Att.....	9	Hislop, Tarik vs James Madison (12-01-09)
	8	FIELDS, Frances at High Point (01-30-10)
	8	TERRY, Helen at Charleston Southern (01-23-10)
	8	MONTGOMERY, Lindsey vs UNC Asheville (01-18-10)
	8	HUDSON, Monique at Gardner-Webb (01-02-10)
	8	Greenleaf, Jordan at Auburn (12-15-09)
	8	Jackson, Lauren at Lafayette (11-28-09)
FT Pct (min 3 made).....	1.000 (6-6)	ERWINSPENCER, Da'Nar at Radford (02-01-10)
	1.000 (4-4)	STULL, Amanda vs Coastal Carolina (02-20-10)
	1.000 (4-4)	MOSS, Sydnei at Coastal Carolina (01-25-10)
	1.000 (4-4)	SCHWAGMEYER, Ali at Charleston Southern (01-23-10)
	1.000 (4-4)	HUDSON, Dominique at Gardner-Webb (01-02-10)
	1.000 (3-3)	RYSKA, Kathi at Winthrop (02-15-10)
Rebounds.....	9	Consedine, Cassie at Navy (11-21-09)
	8	MOSS, Sydnei at Coastal Carolina (01-25-10)
	8	MONTGOMERY, Lindsey vs UNC Asheville (01-18-10)
Assists.....	9	HUDSON, Dominique at Gardner-Webb (01-02-10)
	7	TULL, Katie vs Charleston Southern (02-22-10)
Steals.....	10	Wright, Monica at Virginia (12-29-09)
	5	SHEPARD, Kendall vs UNC Asheville (01-18-10)
	5	Kellum, Paulisha at Virginia (12-29-09)
Blocked Shots.....	3	WHITE, Katie at Coastal Carolina (01-25-10)
	3	POPE, LaTroya at Gardner-Webb (01-02-10)
Turnovers.....	9	MILLER, Joanna vs N.C. Central (02-04-10)
	9	ERWINSPENCER, Da'Nar at Radford (02-01-10)
	9	Becky Fernandes vs Longwood (01-12-10)
	9	Benson, Lauren vs Cornell (12-28-09)
Fouls.....	5	WASMER, Kelsey vs Charleston Southern (02-22-10)

2009-10 Liberty Women's Basketball
 Liberty Team High/Low Analysis (as of Feb 25, 2010)
 All games

Liberty - TEAM GAME HIGHS

POINTS.....	90	at Lafayette (11-28-09)
	86	GLENVILLE STATE (12-05-09)
	82	UNC ASHEVILLE (01-18-10)
	78	LONGWOOD (01-12-10)
	75	at High Point (01-30-10)
FIELD GOALS MADE.....	37	at Lafayette (11-28-09)
	35	GLENVILLE STATE (12-05-09)
FIELD GOAL ATTEMPTS.....	63	UNC ASHEVILLE (01-18-10)
	61	LONGWOOD (01-12-10)
FIELD GOAL PERCENTAGE.....	.644 (29-45)	PRESBYTERIAN COLLEGE (01-16-10)
	.617 (37-60)	at Lafayette (11-28-09)
3 PT FIELD GOALS MADE.....	9	UNC ASHEVILLE (01-18-10)
	5	PRESBYTERIAN COLLEGE (01-16-10)
	5	WINTHROP (01-09-10)
3 PT FG ATTEMPTS.....	17	UNC ASHEVILLE (01-18-10)
	14	WINSTON-SALEM STATE (11-13-09)
3 PT FG PERCENTAGE.....	.667 (4-6)	vs Tulane (11-20-09)
	.529 (9-17)	UNC ASHEVILLE (01-18-10)
FREE THROWS MADE.....	26	at High Point (01-30-10)
	21	at Radford (02-01-10)
FREE THROW ATTEMPTS.....	35	at High Point (01-30-10)
	29	CHARLESTON SOUTHERN (02-22-10)
	29	at Radford (02-01-10)
FREE THROW PERCENTAGE.....	.923 (12-13)	at Auburn (12-15-09)
	.800 (8-10)	at Virginia (12-29-09)
REBOUNDS.....	67	GLENVILLE STATE (12-05-09)
	54	LONGWOOD (01-12-10)
ASSISTS.....	25	GLENVILLE STATE (12-05-09)
	22	WINTHROP (01-09-10)
STEALS.....	19	PRESBYTERIAN COLLEGE (01-16-10)
	18	UNC ASHEVILLE (01-18-10)
BLOCKED SHOTS.....	6	UNC ASHEVILLE (01-18-10)
	5	at Winthrop (02-15-10)
TURNOVERS.....	33	GLENVILLE STATE (12-05-09)
	30	at Virginia (12-29-09)
FOULS.....	27	at Gardner-Webb (01-02-10)
	23	JAMES MADISON (12-01-09)
	23	at Lafayette (11-28-09)

2009-10 Liberty Women's Basketball
 Liberty High/Low Analysis (as of Feb 25, 2010)
 All games

Opponent - GAME HIGHS

POINTS.....	70	at Gardner-Webb (01-02-10)
	70	at Auburn (12-15-09)
	63	at Virginia (12-29-09)
	62	at High Point (01-30-10)
	60	JAMES MADISON (12-01-09)
FIELD GOALS MADE.....	24	at Auburn (12-15-09)
	23	GARDNER-WEBB (02-08-10)
FIELD GOAL ATTEMPTS.....	78	GLENVILLE STATE (12-05-09)
	54	JAMES MADISON (12-01-09)
FIELD GOAL PERCENTAGE.....	.523 (23-44)	GARDNER-WEBB (02-08-10)
	.480 (24-50)	at Auburn (12-15-09)
3 PT FIELD GOALS MADE.....	10	CHARLESTON SOUTHERN (02-22-10)
	9	COASTAL CAROLINA (02-20-10)
3 PT FG ATTEMPTS.....	49	GLENVILLE STATE (12-05-09)
	30	at Charleston Southern (01-23-10)
3 PT FG PERCENTAGE.....	.600 (3-5)	at Lafayette (11-28-09)
	.500 (9-18)	COASTAL CAROLINA (02-20-10)
FREE THROWS MADE.....	26	at Gardner-Webb (01-02-10)
	20	at Lafayette (11-28-09)
FREE THROW ATTEMPTS.....	36	at Gardner-Webb (01-02-10)
	32	JAMES MADISON (12-01-09)
FREE THROW PERCENTAGE.....	1.000 (6-6)	at Coastal Carolina (01-25-10)
	.818 (18-22)	at Charleston Southern (01-23-10)
REBOUNDS.....	41	JAMES MADISON (12-01-09)
	35	UNC GREENSBORO (11-17-09)
ASSISTS.....	17	at Gardner-Webb (01-02-10)
	16	vs Tulane (11-20-09)
STEALS.....	19	at Virginia (12-29-09)
	15	GLENVILLE STATE (12-05-09)
BLOCKED SHOTS.....	5	at Coastal Carolina (01-25-10)
	4	at High Point (01-30-10)
TURNOVERS.....	32	WINSTON-SALEM STATE (11-13-09)
	30	PRESBYTERIAN COLLEGE (01-16-10)
FOULS.....	25	at High Point (01-30-10)
	24	LONGWOOD (01-12-10)
	24	at Gardner-Webb (01-02-10)
	24	GLENVILLE STATE (12-05-09)

2009-10 Liberty Women's Basketball
 Liberty High/Low Analysis (as of Feb 25, 2010)
 All games

Liberty - GAME LOWS

POINTS.....	50	JAMES MADISON (12-01-09)
	52	at Winthrop (02-15-10)
	54	at Virginia (12-29-09)
	55	at Navy (11-21-09)
	56	GARDNER-WEBB (02-08-10)
FIELD GOALS MADE.....	18	JAMES MADISON (12-01-09)
	19	at Navy (11-21-09)
FIELD GOAL ATTEMPTS.....	41	at Radford (02-01-10)
	44	CHARLESTON SOUTHERN (02-22-10)
FIELD GOAL PERCENTAGE.....	.305 (18-59)	JAMES MADISON (12-01-09)
	.385 (20-52)	at Coastal Carolina (01-25-10)
3 PT FIELD GOALS MADE.....	0	GLENVILLE STATE (12-05-09)
	0	at Radford (02-01-10)
	0	COASTAL CAROLINA (02-20-10)
3 PT FG ATTEMPTS.....	1	GLENVILLE STATE (12-05-09)
	3	at Radford (02-01-10)
3 PT FG PERCENTAGE.....	.000 (0-1)	GLENVILLE STATE (12-05-09)
	.000 (0-3)	at Radford (02-01-10)
	.000 (0-5)	COASTAL CAROLINA (02-20-10)
FREE THROWS MADE.....	8	at Virginia (12-29-09)
	8	WINTHROP (01-09-10)
	8	N.C. CENTRAL (02-04-10)
FREE THROW ATTEMPTS.....	10	at Virginia (12-29-09)
	11	WINTHROP (01-09-10)
FREE THROW PERCENTAGE.....	.455 (10-22)	UNC GREENSBORO (11-17-09)
	.524 (11-21)	vs Cornell (12-28-09)
REBOUNDS.....	23	at Auburn (12-15-09)
	28	COASTAL CAROLINA (02-20-10)
ASSISTS.....	6	JAMES MADISON (12-01-09)
	6	at Auburn (12-15-09)
STEALS.....	6	JAMES MADISON (12-01-09)
	6	N.C. CENTRAL (02-04-10)
BLOCKED SHOTS.....	0	at Navy (11-21-09)
	1	at Lafayette (11-28-09)
	1	at Auburn (12-15-09)
	1	at Gardner-Webb (01-02-10)
	1	at Charleston Southern (01-23-10)
	1	COASTAL CAROLINA (02-20-10)
	1	CHARLESTON SOUTHERN (02-22-10)
TURNOVERS.....	13	at Coastal Carolina (01-25-10)
	14	at Lafayette (11-28-09)
	14	at High Point (01-30-10)
	14	COASTAL CAROLINA (02-20-10)
FOULS.....	10	PRESBYTERIAN COLLEGE (01-16-10)
	11	UNC ASHEVILLE (01-18-10)

2009-10 Liberty Women's Basketball
 Liberty High/Low Analysis (as of Feb 25, 2010)
 All games

Opponent - GAME LOWS

POINTS.....	18	at Winthrop (02-15-10)
	26	WINSTON-SALEM STATE (11-13-09)
	27	PRESBYTERIAN COLLEGE (01-16-10)
	38	WINTHROP (01-09-10)
	38	at Coastal Carolina (01-25-10)
FIELD GOALS MADE.....	5	at Winthrop (02-15-10)
	10	PRESBYTERIAN COLLEGE (01-16-10)
FIELD GOAL ATTEMPTS.....	36	PRESBYTERIAN COLLEGE (01-16-10)
	39	at Lafayette (11-28-09)
FIELD GOAL PERCENTAGE.....	.119 (5-42)	at Winthrop (02-15-10)
	.192 (15-78)	GLENVILLE STATE (12-05-09)
3 PT FIELD GOALS MADE.....	0	at Winthrop (02-15-10)
	1	WINSTON-SALEM STATE (11-13-09)
	1	PRESBYTERIAN COLLEGE (01-16-10)
3 PT FG ATTEMPTS.....	5	at Lafayette (11-28-09)
	7	at Virginia (12-29-09)
3 PT FG PERCENTAGE.....	.000 (0-14)	at Winthrop (02-15-10)
	.056 (1-18)	PRESBYTERIAN COLLEGE (01-16-10)
FREE THROWS MADE.....	3	WINSTON-SALEM STATE (11-13-09)
	5	vs Tulane (11-20-09)
FREE THROW ATTEMPTS.....	5	WINSTON-SALEM STATE (11-13-09)
	6	at Coastal Carolina (01-25-10)
FREE THROW PERCENTAGE.....	.421 (8-19)	UNC GREENSBORO (11-17-09)
	.500 (5-10)	vs Tulane (11-20-09)
	.500 (8-16)	NORTH CAROLINA A&T (01-05-10)
REBOUNDS.....	16	CHARLESTON SOUTHERN (02-22-10)
	18	PRESBYTERIAN COLLEGE (01-16-10)
ASSISTS.....	2	at Winthrop (02-15-10)
	5	WINSTON-SALEM STATE (11-13-09)
STEALS.....	2	at Lafayette (11-28-09)
	2	at High Point (01-30-10)
BLOCKED SHOTS.....	0	WINSTON-SALEM STATE (11-13-09)
	0	at Navy (11-21-09)
	0	vs Cornell (12-28-09)
	0	WINTHROP (01-09-10)
	0	COASTAL CAROLINA (02-20-10)
	0	CHARLESTON SOUTHERN (02-22-10)
TURNOVERS.....	13	at Gardner-Webb (01-02-10)
	15	JAMES MADISON (12-01-09)
	15	at Charleston Southern (01-23-10)
FOULS.....	13	WINSTON-SALEM STATE (11-13-09)
	13	at Auburn (12-15-09)
	13	N.C. CENTRAL (02-04-10)

2009-10 Liberty Women's Basketball
 Liberty Team Game-by-Game (as of Feb 25, 2010)
 All games

TEAM STATISTICS

Opponent	Date	Score	W/L	---TOTAL---		--3-PTRS--		---REBOUNDS---				Pts---Avg								
				FG-FGA	Pct	3FG-FGA	Pct	FT-FTA	Pct	Off	Def	Tot	Avg	PF	A	TO	Blk	Stl	Pts	Avg
WINSTON-SALEM STATE	11-13-09	71-26	W	27-57	.474	4-14	.286	13-17	.765	16	23	39	39.0	15	18	19	4	15	71	71.0
UNC GREENSBORO	11-17-09	60-42	W	24-49	.490	2-9	.222	10-22	.455	13	27	40	39.5	17	10	19	4	14	60	65.5
vs Tulane	11-20-09	63-52	W	24-47	.511	4-6	.667	11-19	.579	15	23	38	39.0	16	10	24	3	11	63	64.7
at Navy	11-21-09	55-43	W	19-48	.396	3-8	.375	14-21	.667	17	23	40	39.2	14	11	18	0	7	55	62.2
at Lafayette	11-28-09	90-55	W	37-60	.617	3-6	.500	13-20	.650	15	18	33	38.0	23	15	14	1	14	90	67.8
JAMES MADISON	12-01-09	50-60	L	18-59	.305	1-9	.111	13-17	.765	14	32	46	39.3	23	6	20	3	6	50	64.8
GLENVILLE STATE	12-05-09	86-45	W	35-57	.614	0-1	.000	16-28	.571	18	49	67	43.3	17	25	33	2	11	86	67.9
at Auburn	12-15-09	64-70	L	25-51	.490	2-7	.286	12-13	.923	6	17	23	40.8	18	6	16	1	8	64	67.4
vs Cornell	12-28-09	70-40	W	28-53	.528	3-11	.273	11-21	.524	16	27	43	41.0	18	16	22	4	12	70	67.7
at Virginia	12-29-09	54-63	L	22-54	.407	2-11	.182	8-10	.800	16	18	34	40.3	20	7	30	3	10	54	66.3
at Gardner-Webb	01-02-10	65-70	L	23-52	.442	4-9	.444	15-25	.600	16	30	46	40.8	27	11	23	1	10	65	66.2
NORTH CAROLINA A&T	01-05-10	57-51	W	21-54	.389	1-6	.167	14-23	.609	19	26	45	41.2	16	13	23	3	11	57	65.4
WINTHROP	01-09-10	67-38	W	27-53	.509	5-13	.385	8-11	.727	12	25	37	40.8	15	22	16	3	14	67	65.5
LONGWOOD	01-12-10	78-55	W	30-61	.492	1-9	.111	17-24	.708	26	28	54	41.8	19	19	28	3	12	78	66.4
PRESBYTERIAN COLLEGE	01-16-10	73-27	W	29-45	.644	5-11	.455	10-17	.588	11	21	32	41.1	10	17	21	2	19	73	66.9
UNC ASHEVILLE	01-18-10	82-40	W	29-63	.460	9-17	.529	15-24	.625	24	25	49	41.6	11	21	18	6	18	82	67.8
at Charleston Souther	01-23-10	65-52	W	25-49	.510	1-6	.167	14-25	.560	15	29	44	41.8	17	10	17	1	8	65	67.6
at Coastal Carolina	01-25-10	57-38	W	20-52	.385	3-8	.375	14-23	.609	22	23	45	41.9	15	9	13	3	10	57	67.1
at High Point	01-30-10	75-62	W	24-50	.480	1-6	.167	26-35	.743	12	30	42	41.9	19	9	14	3	8	75	67.5
at Radford	02-01-10	63-45	W	21-41	.512	0-3	.000	21-29	.724	13	23	36	41.7	15	12	24	4	15	63	67.2
N.C. CENTRAL	02-04-10	64-44	W	26-52	.500	4-9	.444	8-13	.615	21	17	38	41.5	15	18	21	3	6	64	67.1
GARDNER-WEBB	02-08-10	56-59	L	21-53	.396	3-11	.273	11-18	.611	14	19	33	41.1	19	11	15	2	8	56	66.6
at Winthrop	02-15-10	52-18	W	20-51	.392	3-12	.250	9-14	.643	18	24	42	41.1	15	8	20	5	12	52	66.0
COASTAL CAROLINA	02-20-10	57-55	W	23-48	.479	0-5	.000	11-20	.550	13	15	28	40.6	16	10	14	1	12	57	65.6
CHARLESTON SOUTHERN	02-22-10	66-56	W	24-44	.545	1-8	.125	17-29	.586	17	21	38	40.5	19	10	22	1	11	66	65.6
Liberty		1640		622-1303	.477	65-215	.302	331-518	.639	399	613	1012	40.5	429	324	504	66	282	1640	65.6
Opponents		1206		404-1185	.341	119-434	.274	279-426	.655	246	397	643	25.7	465	273	525	46	191	1206	48.2

Games played: 25
 Points/game: 65.6
 FG Pct: 47.7
 3FG Pct: 30.2
 FT Pct: 63.9

Rebounds/game: 40.5
 Assists/game: 13.0
 Turnovers/game: 20.2
 Assist/turnover ratio: 0.6
 Steals/game: 11.3
 Blocks/game: 2.6

2009-10 Liberty Women's Basketball
 Liberty Team Game-by-Game Comparison (as of Feb 25, 2010)
 All games

Opponent	1st	2nd	Score	Mar	Total FG	FG Pct	3-Pointers	3FG Pct	Free Throws	FT Pct	Rebounds	Assist	Turnover	Block	Steal	Fouls	
WINSTON-SALEM STATE.....	30/12	41/14	71-26	+45	27-57/11-42	.474/.262	4-14/ 1-12	.286/.083	13-17/ 3-5	.765/.600	39/25	+14	18/5	19/32	4/0	15/4	15/13
UNC GREENSBORO.....	32/21	28/21	60-42	+18	24-49/15-52	.490/.288	2-9/ 4-24	.222/.167	10-22/ 8-19	.455/.421	40/35	+5	10/10	19/21	4/1	14/11	17/21
Tulane.....	32/19	31/33	63-52	+11	24-47/20-48	.511/.417	4-6/ 7-21	.667/.333	11-19/ 5-10	.579/.500	38/22	+16	10/16	24/22	3/2	11/8	16/19
Navy.....	24/32	31/11	55-43	+12	19-48/15-44	.396/.341	3-8/ 4-20	.375/.200	14-21/ 9-15	.667/.600	40/26	+14	11/11	18/17	0/0	7/8	14/19
Lafayette.....	42/28	48/27	90-55	+35	37-60/16-39	.617/.410	3-6/ 3-5	.500/.600	13-20/20-26	.650/.769	33/20	+13	15/8	14/24	1/2	14/2	23/20
JAMES MADISON.....	16/28	34/32	50-60	(10)	18-59/18-54	.305/.333	1-9/ 5-18	.111/.278	13-17/19-32	.765/.594	46/41	+5	6/13	20/15	3/3	6/4	23/15
GLENVILLE STATE.....	39/23	47/22	86-45	+41	35-57/15-78	.614/.192	0-1/ 7-49	.000/.143	16-28/ 8-11	.571/.727	67/29	+38	25/12	33/20	2/1	11/15	17/24
Auburn.....	19/33	45/37	64-70	(6)	25-51/24-50	.490/.480	2-7/ 6-17	.286/.353	12-13/16-23	.923/.696	23/34	(11)	6/14	16/19	1/3	8/6	18/13
Cornell.....	31/14	39/26	70-40	+30	28-53/13-48	.528/.271	3-11/ 4-16	.273/.250	11-21/10-18	.524/.556	43/25	+18	16/9	22/22	4/0	12/6	18/17
Virginia.....	29/33	25/30	54-63	(9)	22-54/21-49	.407/.429	2-11/ 2-7	.182/.286	8-10/19-26	.800/.731	34/26	+8	7/13	30/20	3/2	10/19	20/15
Gardner-Webb.....	29/29	36/41	65-70	(5)	23-52/19-51	.442/.373	4-9/ 6-16	.444/.375	15-25/26-36	.600/.722	46/27	+19	11/17	23/13	1/3	10/9	27/24
NORTH CAROLINA A&T.....	33/27	24/24	57-51	+6	21-54/19-48	.389/.396	1-6/ 5-17	.167/.294	14-23/ 8-16	.609/.500	45/28	+17	13/13	23/19	3/3	11/9	16/18
WINTHROP.....	24/16	43/22	67-38	+29	27-53/13-41	.509/.317	5-13/ 3-9	.385/.333	8-11/ 9-13	.727/.692	37/21	+16	22/10	16/20	3/0	14/4	15/15
LONGWOOD.....	38/25	40/30	78-55	+23	30-61/18-52	.492/.346	1-9/ 7-22	.111/.318	17-24/12-18	.708/.667	54/19	+35	19/13	28/24	3/3	12/12	19/24
PRESBYTERIAN COLLEGE.....	36/10	37/17	73-27	+46	29-45/10-36	.644/.278	5-11/ 1-18	.455/.056	10-17/ 6-10	.588/.600	32/18	+14	17/7	21/30	2/1	19/10	10/16
UNC ASHEVILLE.....	41/17	41/23	82-40	+42	29-63/14-51	.460/.275	9-17/ 5-12	.529/.417	15-24/ 7-12	.625/.583	49/27	+22	21/9	18/25	6/1	18/9	11/19
Charleston Southern.....	37/24	28/28	65-52	+13	25-49/13-47	.510/.277	1-6/ 8-30	.167/.267	14-25/18-22	.560/.818	44/26	+18	10/10	17/15	1/2	8/6	17/23
Coastal Carolina.....	16/21	41/17	57-38	+19	20-52/13-41	.385/.317	3-8/ 6-14	.375/.429	14-23/ 6-6	.609/1.000	45/21	+24	9/7	13/20	3/5	10/7	15/19
High Point.....	34/41	41/21	75-62	+13	24-50/20-49	.480/.408	1-6/ 5-14	.167/.357	26-35/17-27	.743/.630	42/25	+17	9/15	14/16	3/4	8/2	19/25
Radford.....	30/15	33/30	63-45	+18	21-41/15-51	.512/.294	0-3/ 3-12	.000/.250	21-29/12-17	.724/.706	36/26	+10	12/8	24/23	4/3	15/7	15/21
N.C. CENTRAL.....	30/20	34/24	64-44	+20	26-52/17-45	.500/.378	4-9/ 2-11	.444/.182	8-13/ 8-12	.615/.667	38/21	+17	18/12	21/21	3/3	6/11	15/13
GARDNER-WEBB.....	27/25	29/34	56-59	(3)	21-53/23-44	.396/.523	3-11/ 6-13	.273/.462	11-18/ 7-12	.611/.583	33/27	+6	11/13	15/17	2/1	8/4	19/19
Winthrop.....	23/10	29/ 8	52-18	+34	20-51/ 5-42	.392/.119	3-12/ 0-14	.250/.000	9-14/ 8-11	.643/.727	42/32	+10	8/2	20/28	5/3	12/9	15/17
COASTAL CAROLINA.....	33/29	24/26	57-55	+2	23-48/19-42	.479/.452	0-5/ 9-18	.000/.500	11-20/ 8-13	.550/.615	28/26	+2	10/13	14/20	1/0	12/6	16/14
CHARLESTON SOUTHERN.....	34/29	32/27	66-56	+10	24-44/18-41	.545/.439	1-8/ 10-25	.125/.400	17-29/10-16	.586/.625	38/16	+22	10/13	22/22	1/0	11/3	19/22

Note: Game totals are displayed in the format TEAM/OPPONENT for each category

2009-10 Liberty Women's Basketball
 Liberty Combined Team Statistics (as of Feb 25, 2010)
 Conference games

RECORD:	OVERALL	HOME	AWAY	NEUTRAL
ALL GAMES.....	(10-2)	(5-1)	(5-1)	(0-0)
CONFERENCE.....	(10-2)	(5-1)	(5-1)	(0-0)
NON-CONFERENCE.....	(0-0)	(0-0)	(0-0)	(0-0)

## Player	GP-GS	Min--Avg	---TOTAL---		---3-PTS---		FT-FTA	Pct	----REBOUNDS----				PF	FO	A	TO	Blk	Stl	Pts	Avg
			FG-FGA	Pct	3FG-FGA	Pct			Off	Def	Tot	Avg								
40 BROWN, Devon.....	12-12	353 29.4	73-161	.453	13-48	.271	35-46	.761	29	75	104	8.7	23	0	20	32	6	28	194	16.2
23 WARLEY, Avery.....	12-12	330 27.5	52-86	.605	0-0	.000	32-61	.525	44	62	106	8.8	39	2	6	30	15	17	136	11.3
21 MAYS, Amber.....	12-12	315 26.3	38-74	.514	2-4	.500	21-42	.500	8	13	21	1.8	29	1	47	35	1	19	99	8.3
11 ANTIC, Jelena.....	6-4	133 22.2	20-31	.645	3-5	.600	3-7	.429	14	13	27	4.5	14	1	7	15	0	7	46	7.7
15 BEECHER, Kylee.....	12-8	316 26.3	26-65	.400	1-8	.125	33-43	.767	25	31	56	4.7	22	0	12	17	3	13	86	7.2
32 McLEOD, Rachel.....	12-12	319 26.6	21-52	.404	4-9	.444	17-20	.850	14	22	36	3.0	8	0	23	15	0	15	63	5.3
25 MORGAN, Dymond.....	12-0	205 17.1	20-53	.377	4-14	.286	15-23	.652	1	10	11	0.9	26	0	20	23	0	24	59	4.9
12 DALE, Danika.....	12-0	211 17.6	19-40	.475	3-9	.333	13-17	.765	10	19	29	2.4	14	0	10	19	4	8	54	4.5
01 WASHINGTON, LaKendr	12-0	144 12.0	14-28	.500	5-12	.417	1-6	.167	5	6	11	0.9	15	0	4	14	0	14	34	2.8
54 COY, Carra.....	10-0	74 7.4	3-11	.273	0-0	.000	1-5	.200	11	5	16	1.6	8	0	1	5	3	0	7	0.7
TEAM.....																				
Total.....	12	2400	286-601	.476	35-109	.321	171-270	.633	187	285	472	39.3	198	4	150	217	32	145	778	64.8
Opponents.....	12	2400	182-536	.340	62-195	.318	134-195	.687	105	187	292	24.3	234	-	124	249	23	76	560	46.7

TEAM STATISTICS	LIBERTY	OPP	DATE	OPPONENT	W/L	SCORE	ATTEND
SCORING.....	778	560	*01-02-10	at Gardner-Webb	L	65-70	249
Points per game.....	64.8	46.7	*01-09-10	WINTHROP	W	67-38	557
Scoring margin.....	+18.2	-	*01-16-10	PRESBYTERIAN COLLEGE	W	73-27	688
FIELD GOALS-ATT.....	286-601	182-536	*01-18-10	UNC ASHEVILLE	W	82-40	826
Field goal pct.....	.476	.340	*01-23-10	at Charleston Southern	W	65-52	881
3 POINT FG-ATT.....	35-109	62-195	*01-25-10	at Coastal Carolina	W	57-38	687
3-point FG pct.....	.321	.318	*01-30-10	at High Point	W	75-62	439
3-pt FG made per game.	2.9	5.2	*02-01-10	at Radford	W	63-45	384
FREE THROWS-ATT.....	171-270	134-195	*02-08-10	GARDNER-WEBB	L	56-59	833
Free throw pct.....	.633	.687	*02-15-10	at Winthrop	W	52-18	560
F-Throws made per game	14.3	11.2	*02-20-10	COASTAL CAROLINA	W	57-55	3387
REBOUNDS.....	472	292	*02-22-10	CHARLESTON SOUTHERN	W	66-56	781
Rebounds per game....	39.3	24.3	% = Navy Classic (Annapolis, Md.)				
Rebounding margin....	+15.0	-	# = Marriott Cavalier Classic (Charlottesville, Va.)				
ASSISTS.....	150	124	* = Big South Conference game				
Assists per game.....	12.5	10.3					
TURNOVERS.....	217	249					
Turnovers per game....	18.1	20.8					
Turnover margin.....	+2.7	-					
Assist/turnover ratio.	0.7	0.5					
STEALS.....	145	76					
Steals per game.....	12.1	6.3					
BLOCKS.....	32	23					
Blocks per game.....	2.7	1.9					
ATTENDANCE.....	7072	3200					
Home games-Avg/Game...	6-1179	6-533					
Neutral site-Avg/Game.	-	0-0					

SCORE BY PERIODS:	1st	2nd	Total
Liberty.....	364	414	- 778
Opponents.....	266	294	- 560

2009-10 Liberty Women's Basketball
 Liberty Extended Season Box Score (as of Feb 25, 2010)
 All games

RECORD:	OVERALL	HOME	AWAY	NEUTRAL
ALL GAMES.....	(20-5)	(11-2)	(7-3)	(2-0)
CONFERENCE.....	(10-2)	(5-1)	(5-1)	(0-0)
NON-CONFERENCE.....	(10-3)	(6-1)	(2-2)	(2-0)

# Player	GP-GS	Min--Avg	-----TOTAL-----			-----3-PTS-----			-----REBOUNDS-----			PF	FO	A	APG	TO	TOPG	A/TO	Blk	BRG	Stl	SPG	Pts	Avg			
			FG-FGA	Pct	3FG-FGA	Pct	3FG/G	FT-FTA	Pct	Off	Def														Tot	Avg	
40 BROWN, Devon.....	25-25	716 28.6	156-331	.471	31-96	.323	1.24	75-102	.735	65	155	220	8.8	47	0	39	1.56	66	2.64	0.59	15	0.60	49	1.96	418	16.7	
23 WARLEY, Avery.....	25-25	687 27.5	109-184	.592	0-0	.000	0.00	45-90	.500	95	116	211	8.4	76	4	12	0.48	67	2.68	0.18	18	0.72	26	1.04	263	10.5	
21 MAYS, Amber.....	25-25	676 27.0	85-156	.545	4-7	.571	0.16	39-72	.542	11	30	41	1.6	66	2	103	4.12	82	3.28	1.26	1	0.04	57	2.28	213	8.5	
11 ANTTIC, Jelena.....	15-8	347 23.1	47-90	.522	5-11	.455	0.33	17-29	.586	37	41	78	5.2	27	1	24	1.60	39	2.60	0.62	2	0.13	15	1.00	116	7.7	
15 BECHER, Kylee.....	25-17	648 25.9	57-130	.438	1-12	.083	0.04	54-73	.740	46	53	99	4.0	42	0	25	1.00	43	1.72	0.58	7	0.28	20	0.80	169	6.8	
32 McLEOD, Rachel.....	25-25	609 24.4	46-120	.383	5-17	.294	0.20	34-44	.773	21	36	57	2.3	26	0	43	1.72	37	1.48	1.16	1	0.04	24	0.96	131	5.2	
01 WASHINGTON, Lakendr	25-0	344 13.8	44-98	.449	9-33	.273	0.36	10-21	.476	15	26	41	1.6	38	1	15	0.60	42	1.68	0.36	3	0.12	33	1.32	107	4.3	
12 DALE, Danika.....	25-0	398 15.9	35-83	.422	5-20	.250	0.20	27-39	.692	24	57	81	3.2	29	0	26	1.04	41	1.64	0.63	11	0.44	19	0.76	102	4.1	
25 MORGAN, Dymond.....	25-0	399 16.0	35-89	.393	5-19	.263	0.20	25-36	.694	7	33	40	1.6	51	0	36	1.44	55	2.20	0.65	0	0.00	37	1.48	100	4.0	
54 COY, Carra.....	19-0	176 9.3	8-22	.364	0-0	.000	0.00	5-12	.417	15	15	30	1.6	27	0	1	0.05	13	0.68	0.08	8	0.42	2	0.11	21	1.1	
TEAM.....										63	51	114	4.6	0				19									

Total.....	25	5000	622-1303	.477	65-215	.302	2.60	331-518	.639	399	613	1012	40.5	429	8	324	12.96	504	20.16	0.64	66	2.64	282	11.28	1640	65.6
Opponents.....	25	5000	404-1185	.341	119-434	.274	4.76	279-426	.655	246	397	643	25.7	465	-	273	10.92	525	21.00	0.52	46	1.84	191	7.64	1206	48.2

SCORE BY PERIODS:	1st	2nd	Total	DEADBALL	REBOUNDS:	OFF	DEF	TOTAL
Liberty.....	759	881	- 1640			73	1	74
Opponents.....	581	625	- 1206			69	0	69

2009-10 Liberty Women's Basketball
 Liberty Combined Team Statistics (as of Feb 25, 2010)
 All games

RECORD:	OVERALL	HOME	AWAY	NEUTRAL
ALL GAMES.....	(20-5)	(11-2)	(7-3)	(2-0)
CONFERENCE.....	(10-2)	(5-1)	(5-1)	(0-0)
NON-CONFERENCE.....	(10-3)	(6-1)	(2-2)	(2-0)

## Player	GP-GS	Min--Avg	---TOTAL---		---3-PTS---		FT-FTA	Pct	----REBOUNDS----				PF	FO	A	TO	Blk	Stl	Pts	Avg
			FG-FGA	Pct	3FG-FGA	Pct			Off	Def	Tot	Avg								
40 BROWN, Devon.....	25-25	716 28.6	156-331	.471	31-96	.323	75-102	.735	65	155	220	8.8	47	0	39	66	15	49	418	16.7
23 WARLEY, Avery.....	25-25	687 27.5	109-184	.592	0-0	.000	45-90	.500	95	116	211	8.4	76	4	12	67	18	26	263	10.5
21 MAYS, Amber.....	25-25	676 27.0	85-156	.545	4-7	.571	39-72	.542	11	30	41	1.6	66	2	103	82	1	57	213	8.5
11 ANTIC, Jelena.....	15-8	347 23.1	47-90	.522	5-11	.455	17-29	.586	37	41	78	5.2	27	1	24	39	2	15	116	7.7
15 BEECHER, Kylee.....	25-17	648 25.9	57-130	.438	1-12	.083	54-73	.740	46	53	99	4.0	42	0	25	43	7	20	169	6.8
32 McLEOD, Rachel.....	25-25	609 24.4	46-120	.383	5-17	.294	34-44	.773	21	36	57	2.3	26	0	43	37	1	24	131	5.2
01 WASHINGTON, LaKendr	25-0	344 13.8	44-98	.449	9-33	.273	10-21	.476	15	26	41	1.6	38	1	15	42	3	33	107	4.3
12 DALE, Danika.....	25-0	398 15.9	35-83	.422	5-20	.250	27-39	.692	24	57	81	3.2	29	0	26	41	11	19	102	4.1
25 MORGAN, Dymond.....	25-0	399 16.0	35-89	.393	5-19	.263	25-36	.694	7	33	40	1.6	51	0	36	55	0	37	100	4.0
54 COY, Carra.....	19-0	176 9.3	8-22	.364	0-0	.000	5-12	.417	15	15	30	1.6	27	0	1	13	8	2	21	1.1
TEAM.....									63	51	114	4.6	0		19					
Total.....	25	5000	622-1303	.477	65-215	.302	331-518	.639	399	613	1012	40.5	429	8	324	504	66	282	1640	65.6
Opponents.....	25	5000	404-1185	.341	119-434	.274	279-426	.655	246	397	643	25.7	465	-	273	525	46	191	1206	48.2

TEAM STATISTICS	LIBERTY	OPP	DATE	OPPONENT	W/L	SCORE	ATTEND
SCORING.....	1640	1206	11-13-09	WINSTON-SALEM STATE	W	71-26	1192
Points per game.....	65.6	48.2	11-17-09	UNC GREENSBORO	W	60-42	786
Scoring margin.....	+17.4	-	*11-20-09	vs Tulane	W	63-52	207
FIELD GOALS-ATT.....	622-1303	404-1185	*11-21-09	at Navy	W	55-43	852
Field goal pct.....	.477	.341	11-28-09	at Lafayette	W	90-55	324
3 POINT FG-ATT.....	65-215	119-434	12-01-09	JAMES MADISON	L	50-60	1209
3-point FG pct.....	.302	.274	12-05-09	GLENVILLE STATE	W	86-45	611
3-pt FG made per game.	2.6	4.8	12-15-09	at Auburn	L	64-70	1566
FREE THROWS-ATT.....	331-518	279-426	#12-28-09	vs Cornell	W	70-40	452
Free throw pct.....	.639	.655	#12-29-09	at Virginia	L	54-63	3096
F-Throws made per game	13.2	11.2	*01-02-10	at Gardner-Webb	L	65-70	249
REBOUNDS.....	1012	643	01-05-10	NORTH CAROLINA A&T	W	57-51	365
Rebounds per game....	40.5	25.7	*01-09-10	WINTHROP	W	67-38	557
Rebounding margin....	+14.8	-	01-12-10	LONGWOOD	W	78-55	460
ASSISTS.....	324	273	*01-16-10	PRESBYTERIAN COLLEGE	W	73-27	688
Assists per game.....	13.0	10.9	*01-18-10	UNC ASHEVILLE	W	82-40	826
TURNOVERS.....	504	525	*01-23-10	at Charleston Southern	W	65-52	881
Turnovers per game....	20.2	21.0	*01-25-10	at Coastal Carolina	W	57-38	687
Turnover margin.....	+0.8	-	*01-30-10	at High Point	W	75-62	439
Assist/turnover ratio.	0.6	0.5	*02-01-10	at Radford	W	63-45	384
STEALS.....	282	191	02-04-10	N.C. CENTRAL	W	64-44	781
Steals per game.....	11.3	7.6	*02-08-10	GARDNER-WEBB	L	56-59	833
BLOCKS.....	66	46	*02-15-10	at Winthrop	W	52-18	560
Blocks per game.....	2.6	1.8	*02-20-10	COASTAL CAROLINA	W	57-55	3387
ATTENDANCE.....	12476	9697	*02-22-10	CHARLESTON SOUTHERN	W	66-56	781
Home games-Avg/Game...	13-960	10-904	% = Navy Classic (Annapolis, Md.)				
Neutral site-Avg/Game.	-	2-330	# = Marriott Cavalier Classic (Charlottesville, Va.)				
			* = Big South Conference game				

SCORE BY PERIODS:	1st	2nd	Total
Liberty.....	759	881	- 1640
Opponents.....	581	625	- 1206