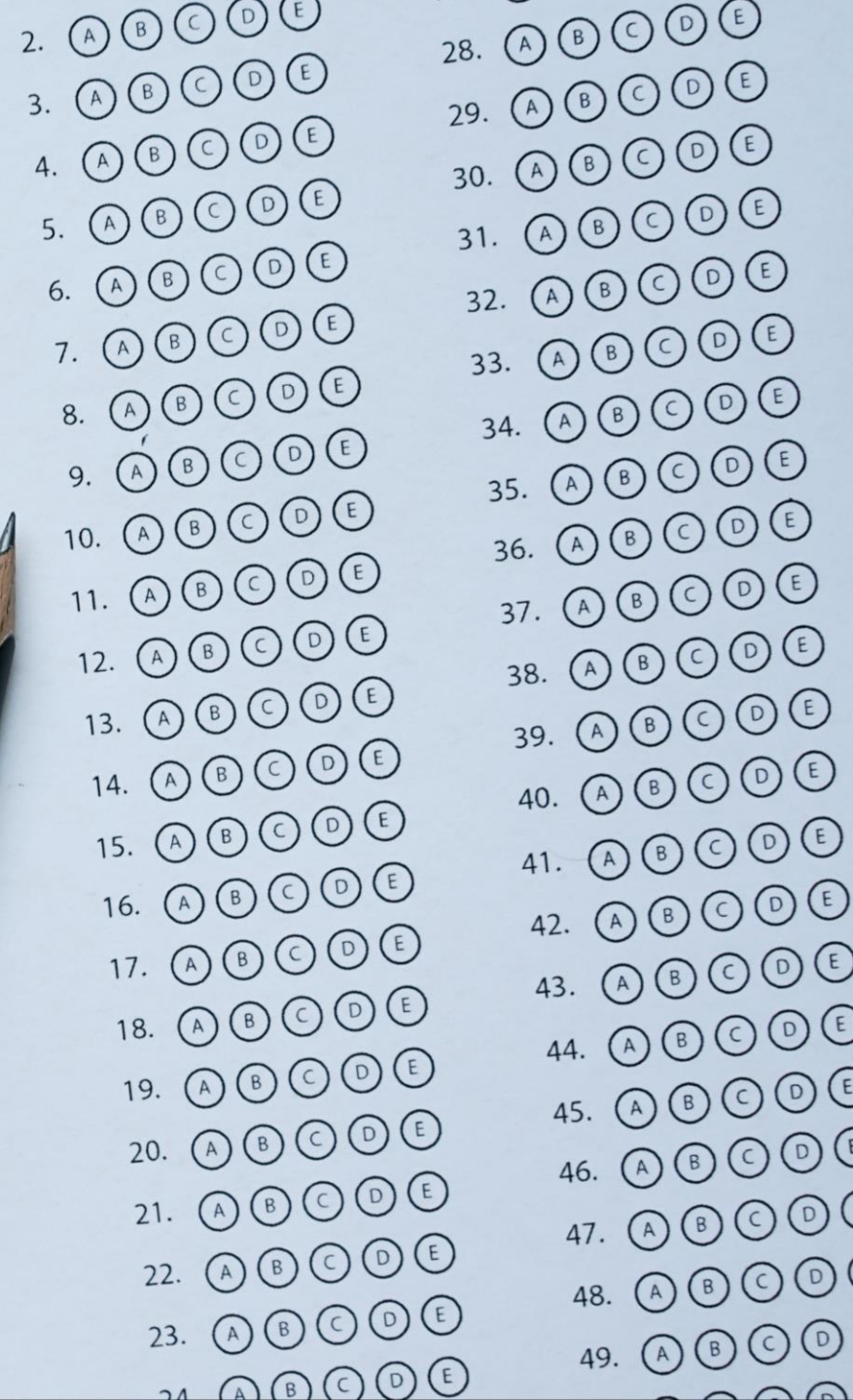


COUNSELING COMPREHENSIVE EXAMS

Liberty University



TWO SEPARATE EXAMS

CPCE

- Published by the CCE
- 160 multiple choice questions
- 4 hours
- Taken at a Pearson testing center or at home
- Costs \$150

Integration Exam

- Specific to Liberty University
- 20 multiple choice questions
- 40 minutes
- Taken on Canvas
- Free of charge

8 CORE CONTENT AREAS OF THE CPCE

1. Professional Counseling Orientation & Ethical Practice
2. Social & Cultural Diversity
3. Human Growth & Development
4. Career Development
5. Counseling & Helping Relationships
6. Group Counseling & Group Work
7. Assessment & Testing
8. Research & Program Evaluation

INTEGRATION EXAM VERSIONS

Version 1

- For students who took COUC 506 in summer 2020 or earlier
- Based on books by McMinn and Entwistle

Version 2

- For students who took COUC 506 in fall 2020 or later
- Based on books by Entwistle and Neff & McMinn

Version 3

- For students who took COUC 506 in summer 2024 or later
- Based on books by King & Ford and Neff & McMinn

Study guides available on webpage

REGISTRATION PROCESS

- 1 • Email exam coordinator for instructions
- 2 • Register through CCE and Pearson
- 3 • Forward CPCE receipt to coordinator
- 4 • Coordinator will register you for CEFS 670/671

BEFORE YOU TEST



Complete all
prerequisites (listed on
webpage)



Good standing in the
program



3.0 minimum GPA



THINGS TO KNOW

- Must pass both exams to graduate
- 3 attempts total per exam
 - CPCE: one attempt per semester
 - Integration Exam: one attempt per subterm
 - Must wait one term between second and third attempt
- Both exams must be taken during the same subterm
- Disability accommodations must be set up in advance
- Exams are closed book, closed note

EXAM SCORES

CPCE

- Scores will be sent to exam coordinator during the middle of the month following students' exams
- Graded out of 136
- Passing score changes for each version
 - Ex: version 100221 is 62/136
 - Ex: version 100122 is 75/136
- CCE releases new version every 6 months

Integration Exam

- You will see your score on Canvas after completing the exam
- Passing score: 14/20

DON'T
FORGET



Email exam coordinator at counselingcompexam@liberty.edu to start registration or ask questions



Go to our webpage to review study materials and exam policies



Include your student ID in all correspondence with our office



THANK YOU!