

**2009-10 Liberty
Women's Basketball
Quick Facts**

General Information

Name of School..... Liberty University
City/Zip Lynchburg, Va. 24502
Founded 1971
Enrollment 11,928
Nickname Lady Flames
School Colors Red, White & Blue
Home Arena..... Vines Center
Capacity..... 8,085
Affiliation NCAA Division I
Conference Big South
Founder Dr. Jerry Falwell
Chancellor Jerry Falwell, Jr.
Director of Athletics..... Jeff Barber
Athletics Dept. Phone..... (434) 582-2100

Women's Basketball Information

Head Coach..... Carey Green
Alma Mater Coastal Carolina, '79
Record at School 264-82 (11th Year)
Career Record..... Same
Assistant Coaches
..... Alexis Sherard (St. Michael's, '93)
..... Heather Stephens (Wyoming, '03)
..... Andy Bloodworth (Calvin, '98)
Certified Athletic Trainer
..... Madeline Bosek

History

First Season of Basketball..... 1975-76
All-Time Record 535-410
NCAA Tournament Appearances..... 12
Last NCAA Appearance..... 2009
Opponent..... Louisville
Result L/42-62 (First Round)
Final/Highest Ranking N/A
Final 2008-09 Record 24-9
Conference Record/Finish..... 15-1/First
Starters Returning/Lost..... 2/3
Letterwinners Returning/Lost..... 7/7
Newcomers..... 6

Athletics Communications Info.

Asst. AD - Communications
..... Todd Wetmore
SID Office Phone (434) 582-2292
Cell Phone (434) 841-8974
Email Address..... twetmore@liberty.edu
Assoc. Director Ryan Bomberger
Cell Phone (434) 221-5576
Email Address... rbomberger@liberty.edu
Asst. Director Paul Carmany
Cell Phone (434) 221-5575
Email Address..... pjcarmany@liberty.edu
Asst. Director Eric Brown
Cell Phone (434) 221-8817
Email Address..... eqbrown@liberty.edu
Grad. Assistant Jennifer Shelton
Cell Phone (828) 638-3876
Email Address..... jbshelton2@liberty.edu
WBB Contact..... Paul Carmany
Ath. Comm. Fax..... (434) 582-2076
Website..... LibertyFlames.com

Media Information

Radio

Station WWMC "The Light" (90.9 FM)
Play-By-Play Jamie Hall
Color Josh Wood

Television

Station ESPN2
Play-By-Play Justin Kutcher
Color Rebecca Lobo

Game No. 33 - March 20, 2010



**No. 13 seed Liberty LADY FLAMES
(27-5, 14-2 Big South)**

vs.



**No. 4 seed Kentucky WILDCATS
(25-7, 11-5 SEC)**

Louisville, Ky. - Freedom Hall - 2:30 p.m. (NCAA 1st Round)

The Game

No. 13 seed Liberty (27-5, 14-2 Big South) will open its 13th NCAA Division I Women's Basketball Championship appearance with a Saturday contest against No. 4 seed Kentucky (25-7, 11-5 SEC), within the Kansas City Region. Tipoff is slated for approximately 2:30 p.m. at venerable Freedom Hall in Louisville, Ky., for the third all-time meeting between the Lady Flames and Wildcats and the first since 1999.

Last Time Out

Liberty won its 13th Big South Championship title in the last 14 seasons in dramatic fashion, Sunday at the Millis Center in High Point, N.C. Tournament MVP Devon Brown banked in the game-winning shot with 4.2 seconds remaining, giving the No. 2-seeded Lady Flames a 68-66 victory over No. 1 seed Gardner-Webb. Liberty led by 20 points with less than 10 minutes remaining, before the Bulldogs stormed back with a 24-2 run.

A Look Ahead

If Liberty defeats Kentucky, the Lady Flames will advance to Monday's second-round tilt at Freedom Hall. Liberty's opponent would be the victor of Saturday's first-round match-up between No. 5 seed Michigan State and No. 12 seed Bowling Green.

Lady Flames On The Air

All Lady Flames basketball games may be heard LIVE on WWMC 90.9 FM "The Light." Jamie Hall, in the midst of his 16th year of broadcasting Lady Flames basketball, is once again handling the courtside play-by-play duties for road games. He will be joined on the NCAA Tournament broadcasts by color analyst Josh Wood and statistician Joey Allen.

Lady Flames On TV

Saturday's game will be televised by ESPN2 and videostreamed on ESPN360.com. The announcing team will feature Justin Kutcher (play-by-play) and Rebecca Lobo (color analyst).

Liberty's Probable Starters

No.	Name	Pos.	Ht.	Yr.	PPG	RPG	Other Stats
21	Amber Mays	G	5-6	Sr.	8.5	1.7	3.8 apg
32	Rachel McLeod	G	5-10	Jr.	4.8	2.4	1.7 apg
40	Devon Brown	G	5-10	R-Fr.	16.9	8.4	2.0 spg
15	Kylee Beecher	F	6-4	So.	6.4	4.1	74.7 FT%
23	Avery Warley	F	6-3	R-So.	10.8	8.4	59.7 FG%

Reserves

1	LaKendra Washington	G	5-8	Fr.	4.4	1.5	1.3 spg
11	Jelena Antic	F	6-2	Fr.	8.3	5.0	1.6 apg
12	Danika Dale	G	6-1	So.	4.3	3.3	1.1 apg
25	Dymond Morgan	G	5-7	Jr.	4.1	1.6	1.5 spg
54	Carra Coy	F	6-6	Fr.	1.0	1.6	0.4 bpg

2009-10 Liberty Women's Basketball Schedule/Results

Overall: 27-5
Big South: 14-2

11/13 WINSTON-SALEM ST.* W, 71-26
11/17 UNC GREENSBORO^ W, 60-42

Navy Classic (Annapolis, Md.)

11/20 vs. Tulane W, 63-52
11/21 at Navy W, 55-43

11/28 at Lafayette W, 90-55

12/1 JAMES MADISON^ L, 50-60
12/5 GLENVILLE STATE^ W, 86-45
12/15 at Auburn L, 64-70

Marriott Cavalier Classic (Charlottesville, Va.)

12/28 vs. Cornell W, 70-40
12/29 at No. 21/23 Virginia L, 54-63

1/2 at Gardner-Webb* L, 65-70
1/5 N.C. A&T^ W, 57-51
1/9 WINTHROP*^ W, 67-38
1/12 LONGWOOD^ W, 78-55
1/16 PRESBYTERIAN*^ W, 73-27
1/18 UNC ASHEVILLE*^ W, 82-40
1/23 at Charleston So.* W, 65-52
1/25 at Coastal Carolina* W, 57-38
1/30 at High Point* W, 75-62

2/1 at Radford* W, 63-45
2/4 N.C. CENTRAL^ W, 64-44
2/8 GARDNER-WEBB*& L, 56-59
2/15 at Winthrop* W, 52-18
2/20 COASTAL CAR.*^ W, 57-55
2/22 CHARLESTON SO.*^ W, 66-56
2/27 at UNC Asheville* W, 94-66

3/1 at Presbyterian* W, 55-40
3/5 RADFORD*^ W, 66-33
3/8 HIGH POINT*^ W, 73-48

*Big South WBB Championship
(High Point, N.C.)*

3/12 No. 7 seed Radford W, 70-52
3/13 No. 3 seed High Point& W, 73-55
3/14 No. 1 seed G.-Webb& W, 68-66

NCAA Tournament

3/20 No. 4 seed Kentucky# 2:30 p.m.
3/22 Second Round# TBA

Home Games in BOLD CAPS

* - Big South Conference Game
All times are Eastern Standard Time
^ - Broadcast on
Flames Sports Network
& - Broadcast on SportSouth/MASN
- Broadcast on ESPN/ESPN2

Team Statistical Leaders

Total Points

Devon Brown - 542/16.9 ppg
Avery Warley - 347/10.8 ppg

Total Rebounds

Devon Brown - 268/8.4 rpg
Avery Warley - 268/8.4 rpg

Total Assists

Amber Mays - 121/3.8 apg
Rachel McLeod - 55/1.7 apg

Total Steals

Amber Mays - 75/2.3 spg
Devon Brown - 63/2.0 spg

Head Coach Carey Green

Record at Liberty: 264-82 (11th Year)
Career Record: Same

10 Big South Championships: 2000, 2001, 2002, 2003, 2004, 2005, 2006, 2008, 2009, 2010

10 NCAA Appearances: 2000, 2001, 2002, 2003, 2004, 2005, 2006, 2008, 2009, 2010

5-time Big South Coach of the Year: 2000, 2003, 2006, 2008, 2009

3-time VaSID State Coach of the Year: 2003, 2005, 2006

Liberty head women's basketball coach Carey Green, in his 11th season with the Lady Flames, has instilled quite a winning tradition during his tenure at the institution. His teams have averaged 24 victories per year, putting his name alongside the nation's premier women's basketball coaches.

Green has accumulated a 264-82 record on the Liberty bench, good for a winning percentage of .763. He currently ranks ninth all-time among NCAA Division I women's basketball coaches in winning percentage, ahead of renowned coaching names like Rutgers' Vivian Stringer, LSU's Van Chancellor and North Carolina's Sylvia Hatchell.

More importantly, Liberty has won the Big South Tournament title and advanced to the NCAA Tournament 10 times with Green as head coach. Liberty has totaled 23 or more victories during nine of those years, including the 2004-05 season, which saw the Lady Flames reach the Sweet 16 for the first time in program history.

Green has actually been to the postseason on 22 occasions as a women's basketball coach, a span which includes a dozen years as an assistant coach at Clemson. In all but one of the 22 appearances, he has experienced the NCAA Tournament.

Last season, Green earned his unprecedented fifth Big South Coach of the Year award, after guiding a team decimated by ACL injuries to a 24-9 record and its 12th NCAA Tournament appearance in the last 13 years. The Lady Flames also won the Hokie Hardwood Classic, claiming their first-ever victory over Virginia Tech in the tournament championship game.

At season's end, Green saw his second player selected in the WNBA Draft, as Megan Frazee was taken in the second round by the San Antonio Silver Stars. She then played part of her rookie season alongside 2005 Liberty alum Katie (Feenstra) Mattera in San Antonio.

Rebounding and defense have always been staples of Green-coached teams, and the 2008-09 Lady Flames were no exception. Liberty outrebounded opponents by an average of 12.7 caroms per game, ranking second nationally. The Lady Flames have now been listed among the nation's top five teams in rebounding margin for six straight years. Liberty led the nation in the category in 2003-04 and 2004-05. The Lady Flames also ended the season ranked in the top 10 nationally for scoring defense (second, 52.6 ppg) and field goal percentage defense (sixth, .345).

A key late-season conference victory over High Point in 2006 made Green the winningest coach in Big South Conference history. He is also Liberty's career wins leader.

The 2004-05 year was a special one on Liberty Mountain, for many reasons. A senior-laden Lady Flames team recorded upset wins over No. 4 seed Penn State (78-70) and No. 5 seed DePaul (88-79) in the first two rounds of the NCAA Tournament, becoming just the second team ever to advance to the Sweet 16 as a No. 13 seed. The Lady Flames ended the season with their highest national ranking to date, No. 21 (USA Today/ESPN).

Green's track record shows he has the ability to meet those challenges. The Lady Flames have recorded two wins over UNLV, Virginia and West Virginia and solo victories over No. 19 DePaul, No. 17 Kansas State, No. 25 Penn State, Virginia Tech and Wake Forest during Green's tenure. The upset victory over No. 25 Virginia in 2003 marked Liberty's first win over a Top 25 team.

His record against conference foes is equally impressive. He led the Lady Flames on a Big South record 47-game winning streak and currently owns a .914 (171-16) winning percentage against conference teams. Green has marched through conference play with one or fewer setbacks seven times, while guiding the Lady Flames to two undefeated conference seasons.

Big South Conference Update

(Records Updated Through 3/14)

Overall Standings

	W	L	Pct.
Gardner-Webb	28	4	.875
Liberty	27	5	.844
Charleston So.	17	13	.567
Coastal Carolina	17	13	.567
High Point	17	14	.548
Winthrop	13	18	.419
UNC Asheville	8	22	.267
Radford	6	22	.214
Presbyterian	5	25	.167

Conference Standings

	W	L	Pct.
#1 Gardner-Webb	15	1	.938
#2 Liberty	14	2	.875
#3 High Point	9	7	.563
#4 Charleston So.	9	7	.563
#5 Coastal Carolina	7	9	.438
#6 Winthrop	7	9	.438
#7 Radford	5	11	.313
#8 UNC Asheville	3	13	.188
Presbyterian	3	13	.188

Big South Conference Award Winners

First-Team All-Conference

Margaret Roundtree, Gardner-Webb

Dominique Hudson, Gardner-Webb

Devon Brown, Liberty

Avery Warley, Liberty

Shanice Cole, Winthrop

Second-Team All-Conference

Katie Tull, Charleston Southern

Kelsey Wasmer, Charleston Southern

Sydnei Moss, Coastal Carolina

Courtney Epps, Gardner-Webb

Kymesha Alston, Radford

Amanda Stull, Coastal Carolina

All-Freshman Team

Mariah Pietrowski, Presbyterian College

Da'Naria Erwin Spencer, Radford

Helen Terry, Charleston Southern

Dria David, Presbyterian College

Jelena Antic, Liberty

Player of the Year

Margaret Roundtree, Gardner-Webb

Defensive Player of the Year

Amanda Stull, Coastal Carolina

Freshman of the Year

Mariah Pietrowski, Presbyterian College

Coach of the Year

Rick Reeves, Gardner-Webb

Scholar-Athlete of the Year

Amanda Stull, Coastal Carolina



Scouting Kentucky

The Kentucky Wildcats are making their seventh NCAA Tournament appearance in program history and first since 2006, during one of the best seasons in program history. Kentucky has tied its school record with 25 wins and posted a team-record 11 SEC victories. The Wildcats, who finished as runners-up behind No. 3 Tennessee in the SEC Tournament, are ranked No. 15 nationally in the ESPN/USA Today Coaches Top 25 Poll and No. 19 in the AP poll.

Kentucky went 17-0 at home this season, featuring wins over nationally-ranked conference foes Georgia and Vanderbilt. However, the Wildcats were just 8-7 away from Lexington.

Liberty and Kentucky have one 2009-10 opponent in common, Auburn. The Lady Flames lost a 70-64 contest at Auburn on Dec. 15. The Wildcats were 2-1 against the Tigers, posting a 68-50 home win on Jan. 24, losing at Auburn by a 65-53 count on Feb. 28 and winning the rubber match, 65-54, March 5 in the SEC Tournament.

The Wildcats swept all three major SEC awards, including Player of the Year (6-1 junior forward Victoria Dunlap), Freshman of the Year (5-9 guard A'dia Mathies) and Coach of the Year (Matthew Mitchell). Dunlap leads the team in both points (17.7 ppg) and rebounds (8.3 rpg), but defense may be her most impressive attribute.

Dunlap ranks No. 14 nationally in steals per game (3.1) and No. 34 in blocked shots per game (2.1). Her efforts contribute to a Kentucky defense which sits No. 14 in the nation with 11.4 spg and forces 23.3 turnovers per outing.

The Coaching Matchup

Liberty Head Coach Carey Green is in his 11th season with the Lady Flames, and has led his team to nine Big South titles. A five-time Big South Coach of the Year, Green owns a 264-82 career record and is the all-time wins leader at Liberty and among Big South women's basketball coaches. His career winning percentage (.763) ranked ninth all-time among NCAA Division I women's basketball coaches at the season's outset. Green is 0-1 all-time against Kentucky.

Matthew Mitchell, the 2010 SEC Coach of the Year, is 58-39 in his third season at Kentucky and 88-68 in five total years as a head coach, which also includes two campaigns at Morehead State. He is making his NCAA Tournament debut as a head coach but previously tasted the Big Dance as a graduate assistant at Tennessee (2000) and as an assistant at Florida (2001 & 2002).

Liberty-Kentucky Series Notes

Liberty is 1-1 all-time against Kentucky, with the road team winning both games of the head-to-head series.

The Lady Flames erased an 18-point first-half deficit on Jan. 12, 1998 in Lexington, Ky., to post their first-ever win over a SEC foe, 80-76. Elena Kisseleva (22 points), Sarah Wilkerson (21) and Sharon Wilkerson (21) led Liberty's attack.

Kentucky gained a measure of revenge on Dec. 11, 1999 at the Vines Center, posting a 69-57 win in Carey Green's eighth game as head coach. Erica Jackson's 22 points paced the Wildcats, while Sharon Wilkerson notched a game-high 26 for Liberty.

Liberty.....Statistical Comparison.....Kentucky

27-5	Record	25-7
48.1	Field Goal Percentage	41.4
34.9	Opponent Field Goal Percentage	37.8
31.2	Three-Point Field Goal Percentage	31.5
2.6	Three-Pointers Made Per Game	5.2
64.2	Free Throw Percentage	70.9
40.0	Rebound Average	38.5
26.0	Opponent Rebound Average	37.8
+14.0	Rebound Differential	+0.7
66.8	Points Per Game	73.9
48.9	Points Allowed Per Game	58.1
+17.9	Point Differential	+15.8

Liberty in the NCAA Tournament

- 1997 (No. 16 seed, at Norfolk, Va.)**
1st Round
Lost to No. 1 seed Old Dominion, 102-52
- 1998 (No. 16 seed, at Knoxville, Tenn.)**
1st Round
Lost to No. 1 seed Tennessee, 102-58
- 1999 (No. 14 seed, at Athens, Ga.)**
1st Round
Lost to No. 3 seed Georgia, 73-52
- 2000 (No. 14 seed, at Baton Rouge, La.)**
1st Round
Lost to No. 3 seed LSU, 77-54
- 2001 (No. 15 seed, at Athens, Ga.)**
1st Round
Lost to No. 2 seed Georgia, 77-48
- 2002 (No. 13 seed, at Columbia, S.C.)**
1st Round
Lost to No. 4 seed South Carolina, 69-61
- 2003 (No. 13 seed, at Nashville, Tenn.)**
1st Round
Lost to No. 4 seed Vanderbilt, 54-44
- 2004 (No. 14 seed, at Philadelphia, Pa.)**
1st Round
Lost to No. 3 seed Georgia, 78-53
- 2005 (No. 13 seed, at College Park, Md.)**
1st Round
Beat No. 4 seed Penn State, 78-70
2nd Round
Beat No. 5 seed DePaul, 88-79
3rd Round (at Chattanooga, Tenn.)
Lost to No. 1 seed LSU, 90-48
- 2006 (No. 13 seed, at Chicago, Ill.)**
1st Round
Lost to No. 4 seed DePaul, 68-43
- 2008 (No. 12 seed, at Norfolk, Va.)**
1st Round
Lost to No. 5 seed Old Dominion, 82-62
- 2009 (No. 14 seed, at Baton Rouge, La.)**
1st Round
Lost to No. 3 seed Louisville, 62-42

Liberty's All-Time NCAA Tournament Leaders

Total Points

- | | |
|----------------------------|----|
| 1) Katie Feenstra..... | 81 |
| 2) Kristal Tharp..... | 70 |
| 3T) Elena Kisseleva..... | 60 |
| 3T) Sharon Wilkerson..... | 60 |
| 5) Daina Staugaitiene..... | 45 |
| Active Leader: | |
| Rachel McLeod..... | 14 |

Total Rebounds

- | | |
|----------------------------|----|
| 1) Katie Feenstra..... | 64 |
| 2) Kristal Tharp..... | 33 |
| 3) Daina Staugaitiene..... | 29 |
| 4) Rima Margeviciute..... | 26 |
| 5) Elena Kisseleva..... | 24 |
| Active Leader: | |
| Avery Warley..... | 9 |

A Look Back

Last season, Liberty traveled to Baton Rouge, La., to play its NCAA Division I Women's Basketball Championship first-round tilt at the Pete Maravich Assembly Center as the No. 14 seed for the second time in program history. The Lady Flames got a tough draw, meeting No. 3 seed and eventual national runner-up Louisville on March 22.

The Cardinals forced 27 turnovers and featured balanced scoring in their 62-42 victory. Liberty's leaders included Amber Mays (team-high 11 points and game-high five assists) and Avery Warley (game-high nine rebounds).

13s are Wild

Hopefully head coach Carey Green and the Lady Flames are not superstitious, because the number 13 abounds in reference to this year's NCAA Division I Women's Basketball Championship appearance.

Liberty is making its 13th trip to the NCAA Tournament in the last 14 years. The Lady Flames' 13 NCAA appearances are tied with Oklahoma for 18th-most among the 64 teams in this year's field.

The Lady Flames earned the No. 13 seed in the Kansas City Region, marking the fifth time Liberty has been seeded 13th. The Lady Flames have received more No. 13 seeds than any other seed in program history.

The No. 13 seed worked out well for Liberty in 2005. That year, the Lady Flames upset No. 4 seed Penn State (78-70) and No. 5 seed DePaul (88-79), reaching the Sweet 16.

Seeing a Lot of the SEC

Eight out of Liberty's 14 NCAA Division I Women's Basketball Championship contests have been played against SEC opponents. The Lady Flames met a SEC foe for eight consecutive seasons, between 1998 and 2005. Liberty's most recent tournament tilt versus a SEC opponent was a 90-48 setback to No. 1 seed LSU in the 2005 Sweet 16.

A Few Liberty-Kentucky Connections

-- Liberty redshirt sophomore forward Avery Warley and Kentucky freshman guard Bernisha Pinkett teamed up to help H.D. Woodson High School win the D.C. Interscholastic Athletic Association title in 2005-06. Warley was a senior and Pinkett a freshman on that squad.

-- Kentucky assistant coach Shyra Elzy played for the 1997-98 national champion Tennessee squad which ended Liberty's unbeaten season (28-1) in the first round of the NCAA Division I Women's Basketball Championship.

-- Blaire Barnhart, the daughter of Kentucky Director of Athletics Mitch Barnhart, is a freshman goalkeeper on Liberty's inaugural women's lacrosse team.

-- Juniors Rachel McLeod and Kittery Maine, along with the rest of their teammates, watched the Liberty men's basketball team lose an 80-54 decision to Kentucky at Rupp Arena on Nov. 21, 2007, on their way to the National City Xavier Invitational.

-- UK sophomore Rebecca Gray scored seven points off the bench for North Carolina as a freshman, in the Tar Heels' 88-67 win over Liberty in Chapel Hill, N.C., Dec. 30, 2007.

Successful Tournament Debuts

Several current Lady Flames enjoyed strong NCAA Tournament debuts. Junior Rachel McLeod tallied 11 points at Old Dominion as a freshman in 2008. Senior Amber Mays posted a team-high 11 points and a game-high five assists versus Louisville last year. Meanwhile, redshirt sophomore Avery Warley paced all players with nine rebounds against the Cardinals a year ago.

2010 Tournament Debutantes

Five Liberty players could see their first NCAA Division I Women's Basketball Championship action on Saturday. The list includes junior Dymond Morgan, redshirt freshman Devon Brown and freshmen Jelena Antic, Carra Coy and LaKendra Washington.

Liberty Players In The NCAA Tournament

#12 Danika Dale	
Games.....	1
PPG.....	0.0
RPG.....	0.0
#15 Kylee Beecher	
Games.....	1
PPG.....	4.0
RPG.....	1.0
#21 Amber Mays	
Games.....	1
PPG.....	11.0
RPG.....	0.0
#22 Tolu Omotola (Redshirting in 09-10)	
2008-09 at TCU	
Games.....	1
PPG.....	0.0
RPG.....	0.0
#23 Avery Warley	
Games.....	1
PPG.....	4.0
RPG.....	9.0
#32 Rachel McLeod	
Games.....	2
PPG.....	7.0
RPG.....	1.5
#43 Kittery Maine	
Games.....	2
PPG.....	0.0
RPG.....	1.0

Liberty's NCAA Tournament Record vs. Conferences

Big 10.....	1-0
BIG EAST.....	1-2
CAA.....	0-2
SEC.....	0-8
Total.....	2-12

Liberty's NCAA Tournament Record By Seed

#12.....	0-1
#13.....	2-4
#14.....	0-4
#15.....	0-1
#16.....	0-2
Total.....	2-12

Liberty's NCAA Tournament Record vs. Seeds

#1.....	0-3
#2.....	0-1
#3.....	0-4
#4.....	1-3
#5.....	1-1
Total.....	2-12

Liberty's NCAA Tournament Record By Location

Neutral Games.....	2-3
Road Games.....	0-9
Total.....	2-12



Liberty Versus the 2010 NCAA Tournament Field

Liberty played three NCAA Tournament teams this season, during its non-conference schedule. The Lady Flames went 1-2 versus teams which qualified for March Madness, including a 63-52 win over Conference USA champion Tulane on Nov. 20 at the Navy Classic. Liberty fell to CAA champion James Madison, 60-50, Dec. 1 at the Vines Center and was also defeated by ACC at-large selection Virginia, 63-54, Dec. 29 in the championship game of the Marriott Cavalier Classic.

Louisville Looks Familiar

Liberty has not played at Freedom Hall before, but the Lady Flames have played at Louisville. Liberty finished second in the 1996 Seelbach Classic (Dec. 28-29) at Cardinal Arena. The Lady Flames handled Long Beach State, 66-55, before losing to the host Cardinals in the championship game, 82-60.

Deja Vu?

Numerous similarities exist between the 2009-10 Lady Flames and the 1996-97 Liberty squad, the first NCAA qualifier in program history.

Both teams were led in scoring by freshmen who earned first team All-Big South honors and the Big South Championship MVP award. Elena Kisseleva (21.6 ppg) paced the 1996-97 squad, while Devon Brown (16.9 ppg) leads the way for this year's Lady Flames.

Both squads were seeded No. 2 in the Big South Women's Basketball Championship, the only two teams in program history to garner that seed.

Both times, the Lady Flames won the title game of the Big South Championship against the No. 1 seed, a team which had prevailed in both regular-season meetings. The 1996-97 Lady Flames upset UNC Greensboro, 89-82, in the championship clash. This year's team beat No. 1 seed Gardner-Webb, 68-66.

Fortunately for the 2009-10 Lady Flames, they received a more favorable NCAA Tournament seeding. The 1996-97 team was seeded No. 16 and made its tournament debut on the road against Old Dominion, ranked No. 2/3 nationally. This time around, the Lady Flames were issued a No. 13 seed and a neutral-site contest against No. 15/19 Kentucky.

Who's Going to Score the Points?

Liberty's active players have combined to score only 33 points in the NCAA Division I Women's Basketball Championship, paced by Rachel McLeod's 14 markers.

Meanwhile, no current Kentucky player has scored an NCAA point. Rebecca Gray went scoreless in four NCAA appearances for North Carolina in 2008.

Possible Second-Round Opponents

No. 5 Seed Michigan State Spartans (22-9, 12-6 Big 10)

How They Got Here: At-large selection

Head Coach: Suzy Merchant

Career Record: 268-154 (15 seasons)

Record at Michigan State: 67-34 (Three seasons)

Leading Scorer: Allyssa DeHaan, 10.9 ppg

Leading Rebounder: Lykendra Johnson, 7.6 rpg

Best NCAA Tournament Finish: National runner-up in 2005

Last NCAA Appearance/Result: 2009/Lost to Iowa State in Sweet 16

All-Time Series Record vs. Liberty: 0-0

No. 12 Seed Bowling Green Falcons (27-6, 14-2 MAC)

How They Got Here: Won Mid-American Conference (MAC) Tournament title

Head Coach: Curt Miller

Career Record: 206-79 (Nine seasons)

Record at Bowling Green: Same

Leading Scorer: Lauren Prochaska, 17.9 ppg

Leading Rebounder: Lauren Prochaska, 5.7 rpg

Best NCAA Tournament Finish: Sweet 16 in 2007

Last NCAA Appearance/Result: 2007/Lost to Arizona State in Sweet 16

All-Time Series Record vs. Liberty: 0-0

NCAA Top 25 Polls

AP Top 25

1) Connecticut (33-0).....	1,000 pts.
2) Stanford (31-1)	960
3) Tennessee (30-2)	911
4) Nebraska (30-1)	880
5) Xavier (27-3).....	807
6) Duke (27-5)	775
7) Notre Dame (27-5)	755
8) Ohio State (30-4).....	728
9) Texas A&M (25-7).....	704
10) West Virginia (28-5).....	639
11) Florida State (26-5).....	605
12) Oklahoma (23-10)	565
13) Georgetown (25-6)	466
14) Baylor (23-9).....	393
15) St. John's (24-6).....	383
16) Iowa State (23-7).....	381
17) Texas (22-10)	369
18) Gonzaga (27-4)	339
19) Kentucky (25-7).....	328
20) Oklahoma State (23-10).....	266
21) LSU (20-9).....	143
22) UCLA (24-8)	126
23) Georgia (23-8).....	109
24) Michigan State (22-9).....	82
25) Hartford (27-4).....	60

2009-10 Opponents in Bold

ESPN/USA Today Coaches Top 25

1) Connecticut (33-0).....	775 pts.
2) Stanford (31-1)	744
3) Tennessee (30-2)	701
4) Nebraska (30-1)	678
5) Xavier (27-3).....	648
6) Duke (27-5)	604
7) Notre Dame (27-5)	568
8) Ohio State (30-4).....	550
9) Texas A&M (25-7).....	524
10) West Virginia (28-5).....	522
11) Florida State (26-5).....	472
12) Oklahoma (23-10)	426
13) Georgetown (25-6)	409
14) Gonzaga (27-4)	326
15) Kentucky (25-7).....	322
16) Iowa State (23-7).....	309
17) St. John's (24-6).....	285
18) Baylor (23-9).....	227
19) Oklahoma State (23-10).....	197
20) Texas (22-10)	167
21) Virginia (21-9).....	127
22) UCLA (24-8)	119
23) Hartford (27-4).....	101
24) Middle Tennessee (25-5).....	76
25) Michigan State (22-9).....	60

2009-10 Opponents in Bold

Liberty Versus the Southeastern Conference (SEC)

The Lady Flames are 1-14 versus the current Southeastern Conference (SEC) members, including 0-1 this season and 0-8 in the NCAA Tournament. Liberty is 0-1 against Alabama, 0-2 against Auburn, 0-1 against Florida, 0-3 against Georgia, 1-1 against Kentucky, 0-2 against LSU, 0-1 against South Carolina, 0-1 against Tennessee and 0-2 against Vanderbilt.

Liberty's only win versus a SEC opponent was an 80-76 triumph at Kentucky on Dec. 12, 1998. The Lady Flames became the first Big South team ever to beat a SEC squad. Elena Kisseleva tallied 22 points, while Sarah and Sharon Wilkerson had 21 apiece.

The Lady Flames played at Auburn on Dec. 15, dropping a 70-64 decision. Devon Brown led all players in both points (19) and rebounds (8) and sparked a second-half comeback which trimmed Liberty's deficit from 14 to three. However, Jordan Greenleaf helped the Tigers hang on to win with 17 points and seven caroms.

The Lady Flames Versus Nationally-Ranked Opponents

Kentucky enters the NCAA Division I Women's Basketball Championship ranked No. 15 in the ESPN/USA Today Coaches Top 25 poll and No. 19 by the AP. The Wildcats are the 34th nationally-ranked Division I foe the Lady Flames have faced in program history.

Liberty is 4-29 all-time versus ranked foes, with two of the victories coming in the NCAA Tournament. Here is a look at the Lady Flames' upsets of ranked opponents:

Nov. 26, 2002 - 77-69 (OT) win over No. 23 Virginia in Lynchburg, Va.

Dec. 4, 2004 - 77-56 win over No. 17/19 Kansas State in Manhattan, Kan.

March 20, 2005 - 78-70 win over No. 22/25 Penn State in College Park, Md. (NCAA)

March 22, 2005 - 88-79 win over No. 17 DePaul in College Park, Md. (NCAA)

Down to the Wire

Devon Brown's bank shot with 4.2 seconds remaining on Sunday gave Liberty a thrilling, 68-66 win over top-seeded Gardner-Webb in the title game of the Big South Championship. Tight finishes are nothing new for the Lady Flames in the Big South championship contest in recent years. Liberty's last four victories in the conference title tilt (2006, 2008, 2009 & 2010) have come by a combined seven points.

Marvelous in March

Liberty has gone 42-12 during the month of March under Carey Green, with nine of the setbacks coming in the NCAA Tournament. The Lady Flames are 12-2 in the regular season, 28-1 in the Big South Championship and 2-9 in the "Big Dance" during the year's third month, under his direction. This season, the Lady Flames are 6-0 to start the calendar year's third month.

The Lady Flames are 50-37 all-time in March contests and did not pick up their first victory in the month until the program's 13th season. Liberty's initial March triumph was an 82-69 win over Randolph-Macon on March 3, 1988.

Making Their Point

Point guards Amber Mays and Dymond Morgan combined for 34 points during Liberty's 73-55 Big South Championship semifinal win over High Point on March 13, both setting career highs in the process. Mays' 21 points were the most by a Lady Flames floor general since Irene Sloof finished with 20 points at Winthrop on Feb. 3, 2001.

Stealing a Win

Liberty's aggressive, trapping defense has produced a Big South-leading 369 steals this season, giving the Lady Flames a chance to break the program record of 377 steals, set in 1979-80.

The Lady Flames' magic number for steals is 11. Liberty is 20-0 when tallying at least 11 steals in a game this season, but only 7-5 when recording 10 or fewer thefts.

Bench Bunch

Since Jelena Antic returned from injury on Feb. 20, the Liberty bench is posting 22.1 ppg. The Lady Flames are 16-1 when scoring more bench points than their opponent.

**Liberty in the
Big South Stats**
(Through Games of 3/14)

Team

Scoring Offense (2nd)	66.8 ppg
Scoring Defense (1st)	48.9 ppg
Scoring Margin (1st)	+17.9 ppg
Free Throw Pct. (6th)642
Field Goal Pct. (1st)481
Field Goal Pct. Defense (2nd) ..	.349
3-Pt. FG Pct. (5th)312
3-Pt. FG Pct. Defense (1st)276
3-Pt. FG Made (9th)	2.6/game
Rebounds (1st)	40.0 rpg
Opp. Rebounds (1st)	26.0 rpg
Rebounding Margin (1st) ..	+14.0 rpg
Offensive Rebounds (1st) ..	15.9 rpg
Defensive Rebounds (6th) ..	24.1 rpg
Blocked Shots (7th)	2.5 bpg
Assists (3rd)	12.5 apg
Steals (1st)	11.5 spg
Turnover Margin (6th)	+1.28
Asst./TO Ratio (4th)	0.64

Individual

Scoring

Devon Brown (1st)	16.9 ppg
Avery Warley (11th)	10.8 ppg
Amber Mays (22nd)	8.5 ppg

Rebounding

Devon Brown (T-2nd)	8.4 rpg
Avery Warley (T-2nd)	8.4 rpg

Offensive Rebounds

Avery Warley (2nd)	3.8 rpg
Devon Brown (7th)	2.6 rpg
Kylee Beecher (15th)	1.9 rpg

Defensive Rebounds

Devon Brown (2nd)	5.8 rpg
Avery Warley (6th)	4.6 rpg

Field Goal Pct.

Avery Warley (1st)597
Devon Brown (3rd)489

Assists

Amber Mays (3rd)	3.8 apg
------------------------	---------

Free Throw Pct.

Devon Brown (5th)739
-------------------------	------

Steals

Amber Mays (3rd)	2.3 spg
Devon Brown (5th)	2.0 spg

Three-Point FG Made

Devon Brown (10th)	1.2/game
--------------------------	----------

Blocked Shots

Avery Warley (9th)	0.8 bpg
Devon Brown (14th)	0.5 bpg

Liberty Not an NCAA Novelty

The women's basketball team is not Liberty's only squad competing with the NCAA's best this year.

This weekend, the Flames are sending six wrestlers to Omaha, Neb., for the NCAA Division I Wrestling Championships. Only 14 schools in the nation qualified more wrestlers for the national championship than the NCAA East Region champion Flames.

Sam Chelanga became Liberty's third NCAA Division I national champion in November, claiming top honors at the NCAA Division I Cross Country Championships. He was joined as a cross country All-American by teammate Evans Kigen, who crossed the line in 20th place.

Chelanga was at it again March 12, at the NCAA Division I Indoor Track & Field Championships. His second consecutive national runner-up finish in the 5K garnered his seventh All-America honor and helped the Flames tie for 26th place in the final team standings.

10-Game Winning Streak

Liberty has won 10 straight games, marking its second 10-game winning skein and third winning streak of at least five games this season. The streak got started with a 52-18 victory at Winthrop on Feb. 15.

First Team Facts

Devon Brown and Avery Warley were both voted to the first team All-Big South roster, giving Liberty a pair first team honorees in the same year for the eighth time and extending the Lady Flames' streak to 14 straight seasons with at least one first team selection.

The Game is Decided by the Opening Tip

Liberty is a perfect 20-0 when Avery Warley wins the opening tip this season.

Climbing the Freshman Charts

Devon Brown is fashioning one of the best freshman seasons in program history. She ranks among Liberty's top two in both freshman points and freshman rebounds.

Brown's Big South-high 542 points are the second-most ever scored by a Lady Flames rookie. Elena Kisseleva tops the list, with her 648 points in 1996-97.

The Waynesboro, Va., native broke Cheri Yates' freshman rebounding record during Liberty's Big South Championship victory over Gardner-Webb on Sunday. Brown has tracked down 268 rebounds this season.

First-Half Defense

Points have come at a premium for Liberty's opponents during the first half this season. The Lady Flames limited Radford to 17 first-half markers on March 5, the 10th time Liberty has held its opponent under 20 points in the opening period. The Lady Flames have gone on to win all 10 contests.

Only five of Liberty's first 32 opponents have scored 30 points or more during the opening 20 minutes of play. The Lady Flames are yielding an average of just 23.4 points in the first half of games in 2009-10.

No Triples? No Problem

Liberty drained a single three-pointer during its championship game triumph over Gardner-Webb on Sunday, shooting 1-6 from behind the arc. It was the 12th time this season that the Lady Flames have connected on one or fewer triples in a contest. Liberty is 11-1 in those games, despite its lack of three-point shooting.

70 is the Magic Number

Liberty is 12-0 this season when scoring at least 70 points in a game, extending a lengthy streak. The Lady Flames have now won 94 consecutive games when reaching the 70-point plateau offensively.

No. 24 Boston College was the most recent team to defeat Liberty when the Lady Flames tallied 70 points. The Eagles dealt the Lady Flames a 74-70 overtime loss, Dec. 6, 2003 at the Brown Classic.

Miscellaneous Stats For the 2009-10 Lady Flames

Team Scoring Leaders

Devon Brown	18 times
Avery Warley	8 times
Amber Mays	4 times
Jelena Antic	3 times
Kylee Beecher	1 time
Danika Dale	1 time
LaKendra Washington	1 time

20-Point Games

Devon Brown	10 times
Avery Warley	3 times
Amber Mays	1 time
LaKendra Washington	1 time

Team Rebounding Leaders

Devon Brown	16 times
Avery Warley	14 times
Jelena Antic	4 times
Kylee Beecher	1 time
Danika Dale	1 time

10-Rebound Games

Avery Warley	13 times
Devon Brown	11 times
Jelena Antic	2 times

Team Assist Leaders

Amber Mays	21 times
Rachel McLeod	7 times
Jelena Antic	5 times
Devon Brown	4 times
Dymond Morgan	4 times
Kylee Beecher	2 times
Danika Dale	2 times
Avery Warley	1 time

5-Assist Games

Amber Mays	10 times
Dymond Morgan	3 times
Rachel McLeod	1 time

Team Steal Leaders

Amber Mays	13 times
Devon Brown	12 times
LaKendra Washington	8 times
Dymond Morgan	7 times
Kylee Beecher	3 times
Danika Dale	3 times
Rachel McLeod	3 times
Avery Warley	3 times
Jelena Antic	1 time

3-Steal Games

Amber Mays	14 times
Devon Brown	13 times
Dymond Morgan	9 times
LaKendra Washington	8 times
Jelena Antic	3 times
Danika Dale	3 times
Avery Warley	3 times
Rachel McLeod	2 times
Kylee Beecher	1 time

Team Blocked Shot Leaders

Avery Warley	15 times
Devon Brown	11 times
Danika Dale	7 times
Carra Coy	5 times
Kylee Beecher	3 times
Jelena Antic	2 times
LaKendra Washington	2 times
Amber Mays	1 time
Dymond Morgan	1 time

3-Block Games

Avery Warley	3 times
--------------	---------

Including Ties

National Leader

Liberty, which has outrebounded 31 of its 32 opponents this season, ranks as the nation's No. 1 team in rebound margin, including games played through March 14. The Lady Flames, who own a +14.0 rebound margin, have ranked among the nation's top five rebounding squads for six consecutive seasons. Liberty led the nation in rebound margin in back-to-back years, 2003-04 and 2004-05.

One Win Away from History

Liberty's 27-5 record is one win shy of the program standard for victories in a season. The 1997-98 Lady Flames went 28-1 and the 2007-08 squad finished 28-4, equaling the record.

Gardner-Webb entered the WNIT with a 28-4 mark, after having matched Liberty's Big South Conference wins record during the Big South Championship.

Dominating Defensive Effort

The Lady Flames enjoyed a record-setting defensive performance Feb. 15 at Winthrop. Liberty established new program records for fewest points allowed (18) and lowest opponent field goal percentage (.119) during its 52-18 triumph.

Liberty also came just two points away from equaling the fewest points ever allowed in a game between two Division I women's basketball teams.

Big Wins, Tight Losses

The Lady Flames' 27 victories this season have come by an average of 22.4 points. Liberty's tightest wins were a 57-55 home victory over Coastal Carolina on Feb. 20 and a 68-66 squeaker over Gardner-Webb in the Big South title contest on Sunday.

Meanwhile, Liberty has lost its five games by a total of 33 points. James Madison posted the widest margin of victory over the Lady Flames, defeating Liberty 60-50, Dec. 1 at the Vines Center.

Double-Double x 2

Before Jan. 12, the Lady Flames had not seen a pair of players record double-doubles in the same game since Nov. 24, 2007. However, Liberty has accomplished the feat five times in its last 19 games.

Longwood (Jan. 12): Jelena Antic (19 pts., 10 rebs.) & Devon Brown (16 pts., 13 rebs.)
Coastal Carolina (Jan. 25): D. Brown (17 pts., 10 rebs.) & A. Warley (15 pts., 12 rebs.)
High Point (Jan. 30): Devon Brown (29 pts., 11 rebs.) & Avery Warley (26 pts., 14 rebs.)
Gardner-Webb (Feb. 8): D. Brown (13 pts., 13 rebs.) & A. Warley (15 pts., 10 rebs.)
Charleston So. (Feb. 22): D. Brown (20 pts., 12 rebs.) & A. Warley (22 pts., 10 rebs.)

The Container is Half Full

This season, the Lady Flames are 14-0, when shooting 50 percent or higher from the field. Liberty is now 73-0 under head coach Carey Green, when the Lady Flames sink at least half of their field goals.

Painting a Masterpiece

Last season, Liberty regularly controlled the area around the basket, outscoring 29 of 33 opponents in the "points in the paint" statistical category.

This year, the Lady Flames have been outstanding in racking up "points in the paint" once again. Liberty has outscored all 32 opponents inside the paint in 2009-10, by an average margin of 24.3 points (40.3 to 16.0).

21 x 10 for No. 40

Redshirt freshman Devon Brown scored a game-high 24 points during Sunday's game versus Gardner-Webb, putting her in double figures for the 21st straight game. Gardner-Webb was the last opponent to hold the Big South's leading scorer under 10 points, limiting Brown to nine tallies on Jan. 2.

2009 graduate Megan Frazee set the school record by scoring in double figures 68 straight times (Jan. 27, 2007 through March 15, 2009).

Liberty's Record ...

When Liberty controls the tip	20-0
When opponent controls the tip.....	7-5
Played at home.....	13-2
Played on the road	10-3
Played at a neutral site.....	4-0
Played a team with a .500+ record.....	13-5
Played a team with a .500 record.....	2-0
Played a team with a below .500 record.....	12-0
When Liberty leads at the half	24-1
When opponent leads at the half.....	3-3
When there is a tie at the half.....	0-1
When Liberty leads with 5:00 left.....	27-1
When opponent leads with 5:00 left	0-4
When there is a tie with 5:00 left	0-0
When Liberty leads with 1:00 left.....	26-0
When opponent leads with 1:00 left	0-4
When there is a tie with 1:00 left	1-1
When Liberty outrebounds opponent	27-4
When opponent outrebounds Liberty	0-1
When the teams' rebound totals are equal...	0-0
When Liberty shoots 50% or better (FG)....	14-0
When Liberty shoots less than 50% (FG)...	13-5
When Liberty outshoots its opponents	24-2
When opponents outshoot Liberty	3-3
When the teams shoot the same pct.....	0-0
When Liberty shoots more 3-pointers.....	4-1
When opponent shoots more 3-pointers	22-4
When same amount of 3-pointers shot.....	1-0
When Liberty shoots more free throws.....	23-1
When opponent shoots more free throws.....	3-4
When same number of free throws taken.....	1-0
When opponent shoots 50% or better (FG)...	0-1
When opponent shoots less than 50% (FG)...	27-4
When Liberty has more turnovers	8-3
When opponent has more turnovers	15-2
When turnovers are the same	4-0
When Liberty blocks more shots	14-2
When opponent blocks more shots	6-2
When blocks are the same	7-1
When Liberty has more steals	23-4
When opponent has more steals.....	3-1
When steals are the same.....	1-0
When Liberty bench outscores opponent...	16-1
When opponent bench outscores Liberty...	11-4
When both benches score the same	0-0
When Liberty scores 50 or fewer points	0-1
When Liberty scores 51-60 points	7-2
When Liberty scores 61-70 points	10-2
When Liberty scores 71-80 points	6-0
When Liberty scores 81 or more points.....	4-0
When the game is decided by 1-5 points	2-2
When the game is decided by 6-10 points	2-3
When the game is decided by 11+ points.....	23-0
November Games	5-0
December Games	2-3
January Games	8-1
February Games.....	6-1
March Games	6-0
Sunday	1-0
Monday	8-1
Tuesday.....	3-3
Wednesday.....	0-0
Thursday.....	1-0
Friday.....	4-0
Saturday	10-1
When wearing white uniforms	17-2
When wearing red uniforms.....	2-0
When wearing blue uniforms.....	8-3

All-Time Winningest Coaches

Through 10 seasons at Liberty, head coach Carey Green remains in elite company. He ranks as the ninth-winningest NCAA Division I women's basketball coach of all time, entering the 2009-10 campaign with a .755 career winning percentage. Here is a look at the top 15 coaches on the all-time list.

Coach, Team(s)	Yrs.	Won	Lost	Pct.
1) Leon Barmore, Louisiana Tech	20	576	87	.867
2) Geno Auriemma, Connecticut	24	696	122	.851
3) Pat Summitt, Tennessee	35	1,005	193	.839
4) Tara VanDerveer, Idaho, Ohio St., Stanford	30	757	193	.797
5) Bill Sheahan, Mt. St. Mary's	17	372	104	.782
6) Robin Selvig, Montana	31	725	204	.780
7) Gail Goestenkors, Duke, Texas	17	439	124	.780
8) Wes Moore, Maryville, F. Marion, Chattanooga	20	466	132	.779
9) Carey Green, Liberty	10	237	77	.755
10) Andy Landers, Georgia	30	725	239	.752
11) Marsha Sharp, Texas Tech	24	571	189	.751
12) C. Vivian Stringer, Cheyney, Iowa, Rutgers	38	825	280	.747
13) Jody Conradt, Sam Houston St., UTA, Texas	38	900	309	.744
14) Sylvia Hatchell, F. Marion, North Carolina	34	812	282	.742
15) Van Chancellor, Mississippi, LSU	21	489	171	.741

Longest-Tenured Assistant Coaches

The 2009-10 season is Heather Stephens' seventh campaign as an assistant coach on Carey Green's coaching staff. This season, she snapped a tie with Jeri (Wiley) Porter as the longest-tenured assistant coach in Liberty women's basketball history. Porter is now the head coach at George Mason.

The Lady Flames have gone 173-50 and won five Big South titles during Stephens' tenure and made the "Sweet 16" of the 2005 NCAA Tournament.

Same Number, New Face

A new Lady Flame is wearing No. 40 this year, after Megan Frazee donned the number for the last four seasons. Among many other accomplishments and accolades, Frazee graduated as the No. 2 scorer (1,883 points) and No. 3 rebounder (951 rebounds) in program history, leaving some very big shoes to fill.

Liberty's new No. 40, Devon Brown, has worn the number proudly so far. The redshirt freshman from Waynesboro, Va. is averaging a Big South-high 16.9 ppg and 8.4 rpg. No freshman has finished the year as the conference's leading scorer since Liberty's Elena Kisseleva in 1996-97.

Tallest Since Feenstra

Carra Coy, one of three new freshmen on this year's team, stands 6-6. That makes the Summerville, S.C., native the tallest Lady Flame since 6-8 Katie Feenstra graduated after the 2004-05 campaign.

International Flavor

Freshman Jelena Antic hails from Skopje, Macedonia and sophomore Tolu Omotola was born in London, England, giving Liberty international players on its roster for the 16th consecutive season. The last time the Lady Flames' roster consisted solely of American-born players was the 1993-94 campaign. Every Carey Green-coached team at Liberty has featured at least one international player.

Local Flavor

Even though Jelena Antic was born in Macedonia, she played high school basketball at Liberty Christian Academy in Lynchburg, Va. She is one of four current Lady Flames who attended high school within 70 miles of the Liberty campus, joining Kylee Beecher (Hidden Valley), Devon Brown (Waynesboro) and Brittany Campbell (Brookville).

Top 50 Scorers in Liberty History

1. Elena Kisseleva	2,154
2. Megan Frazee	1,883
3. Katie Feenstra	1,845
4. Sharon Wilkerson	1,733
5. Sarah Wilkerson	1,331
6. Ginny Holloway	1,180
7. Sharon Snodgrass	1,169
8. Kristal Tharp	1,161
9. Moriah Frazee	1,147
10. Pam Wilder	1,120
11. Brenda Gunsallus	1,078
12. Cynthia Thomson	1,055
13. Dawn Coleman	908
14. Daina Staugaitiene	846
15. Sandra Bridges	822
16. Reggie Gomes	810
17. Kristi Mercer	809
18. Lil Cooper	808
19. Michelle Fricke	803
20. Stacey White	801
21. Malynda Keck	792
22. Sheila Ford	761
23. Pam Stanfield	752
24. Michelle Wyrms	748
25. Sharon Freet	727
26. Jeri Wiley	717
27. Annetta Paraham	705
28. Trish Harris	697
29. Allyson Fasnacht	672
30. Courtney Watkins	669
31. Rachel Hammond	663
32. Harriett Blair	651
33. Meribeth Feenstra	628
34. Monique Leonard	624
35. Avery Warley	613
36. Rachel Young	610
37. Kristina Palaimaite	600
38. Carla Weaver	594
39. Theresa Bream	589
40. Anna Barrington	579
41. Molly Frazee	571
42. Missy Roberts	560
43. Erin Wall	551
44T. Beth Ralph	547
44T. Irene Sloof	547
46. Angie Johnson	545
47. Kathy Wooten	543
48. Devon Brown	542
49. Stephanie Walker	524
50. Amber Mays	518
Other Current Players:	
Rachel McLeod	413
Kylee Beecher	343

Tournament Tested

Liberty played in a pair of regular-season tournaments this season, the Navy Classic (Nov. 20-21) and the Marriott Cavalier Classic (Dec. 28-29). The Lady Flames won the Navy Classic, while finishing second at the Marriott Cavalier Classic.

Liberty has won four regular-season tournament championships during the last three years, a list which also includes the 2008 National City Xavier Invitational, the 2008 UNLV Lady Rebel Christmas Classic and the 2009 Hokie Hardwood Classic.

Gaining Some National Recognition

Liberty earned a single vote in the ESPN/USA Today Coaches Top 25 Poll, released on Dec. 8, marking the second straight week the Lady Flames received a vote.

Liberty also collected one vote in the AP Top 25 Poll, released on Nov. 30.

Lack of Overtime

Liberty has played only one overtime game in its last 211 outings, a 64-62 setback at High Point on Jan. 20, 2007. Since that contest at the Millis Center, the Lady Flames have played 110 consecutive games without needing extra time. No players on Liberty's current roster have competed in an overtime game with the Lady Flames.

The Lady Flames' most recent overtime victory came on Jan. 6, 2004, when Liberty defeated American, 76-72, on the road in double overtime.

Liberty's most recent overtime contest at the Vines Center was a memorable one. The Lady Flames defeated Virginia, 77-69, in overtime on Nov. 26, 2002, to claim their first-ever win over the Cavaliers. It also marked Liberty's first win over a ranked opponent, as Virginia entered the game with a No. 25 national ranking.

Big Shoes to Fill

Seven seniors graduated from last year's Liberty team, which went 24-9 and won its second consecutive Big South title. Alexandria Bream, Megan Frazee, Molly Frazee, Moriah Frazee, Rachel Hammond, Rebecca Lightfoot and Jessica Nelson accounted for 57.0 percent of the Lady Flames' points and 41.7 percent of the team's rebounds in 2008-09.

Headlining the group was Megan Frazee, who claimed the Big South Player of the Year and Big South Championship MVP awards.

Youth will be Served

Underclassmen have stepped up to fill the void left by the seven seniors who graduated from the 2008-09 Liberty roster. Through the first 32 games of the 2009-10 campaign, the Lady Flames' freshmen and sophomores are accounting for 73.9 percent of the team's points and 75.6 percent of Liberty's rebounds.

The Lady Flames' top five rebounders are all either freshmen or sophomores, as are four of their top five scorers.

There is Only One

Starting point guard Amber Mays is the only senior on this year's team roster. Liberty has not had so few seniors since the 2005-06 Lady Flames played the season without a single senior.

Mays has played well during her final collegiate campaign, leading the Lady Flames in assists (3.8 apg) and steals (2.3 apg), while ranking third in scoring (8.5 ppg). Most recently, she made the Big South Championship all-tournament team.

20/20 Vision

Devon Brown (29 points) and Avery Warley (26 points) both set new career highs for points during a Jan. 30, 75-62 victory at High Point. In the process, the duo became the first pair of Lady Flames to score 20 points in the same game since Megan Frazee had 22 points and sister Moriah Frazee added 20 in a 76-57 triumph over High Point on Jan. 29, 2008.

Brown and Warley were at it again, Feb. 22 against Charleston Southern. Warley paced all players with 22 points, while Brown added 20 markers of her own against the Buccaneers.

Top 50 Rebounders in Liberty History

1. Katie Feenstra	1,033
2. Sharon Snodgrass	1,026
3. Megan Frazee	951
4. Elena Kisseleva	876
5. Carla Weaver	859
6. Sharon Wilkerson	625
7. Moriah Frazee	601
8. Sharon Freet	590
9. Kristina Palaimaite	586
10. Pam Stanfield	583
11. Lil Cooper	578
12. Annetta Paraham	556
13. Meribeth Feenstra	547
14. Theresa Bream	536
15. Jennifer Fairfax	533
16T. Wendy Johnson	532
16T. Malynda Keck	532
18. Pam Wilder	529
19. Avery Warley	524
20. Kathy Wooten	504
21. Michelle Fricke	500
22. Helen Gomes	493
23. Trish Harris	484
24. Flori Willie	478
25. Michelle Wyrms	472
26. Kristal Tharp	466
27. Stacey White	456
28. Lynn Beardslee	450
29. Karolina Piotrkiewicz	445
30. Sarah Wilkerson	442
31. Erin Wall	423
32T. Ginny Holloway	420
32T. Daina Staugaitiene	420
34. Dawn Coleman	405
35. Jayne Mottershead	401
36. Sheila Ford	395
37. Angie Johnson	389
38. Trena Criss	370
39. Erma Williams	357
40. Rebecca Lightfoot	351
41. Courtney Watkins	327
42. Crystal Peace	320
43. Molly Frazee	319
44. Monique Leonard	315
45. Harriett Blair	310
46. Reggie Gomes	308
47. Jamie Feagin	303
48. Rachel Young	301
49. Roli-Ann Nikagbatse	296
50T. Rachel Hammond	287
50T. Beth Ralph	287

Other Current Players:

Kylee Beecher	270
Devon Brown	268
Rachel McLeod	203

Keeping Good Company

Through games played on March 14, Liberty is ranked in the top 10 nationally in four statistical categories: rebound margin (No. 1), scoring defense (No. 2), field goal percentage (No. 3) and scoring margin (No. 6).

The only other team in the country to rank among the nation's top 10 in all four of those categories is undefeated, No. 1 Connecticut.

Furious Comeback

The Lady Flames fell behind Navy, 20-4, 7:56 into the Navy Classic championship game on Nov. 21. Liberty then outscored the host Midshipmen, 51-23, during the remainder of the game to claim an improbable 55-43 victory.

It was the Lady Flames' largest comeback since Nov. 27, 2001, in a matchup with VCU at the Vines Center. The Rams owned a 38-22 advantage with 18:41 remaining in the second half, before the Lady Flames rallied for a 65-60 victory.

Furious Comeback, The Sequel

Liberty trailed host Coastal Carolina, 28-18, with 17 minutes remaining in their game on Jan. 25. The Lady Flames then outscored the Chanticleers by a 39-10 count the rest of the way, closing out their 57-38 with a game-ending 24-2 run.

Closing the Season in Style

Liberty swept the season's final Big South Conference weekly honors on March 9, with Avery Warley earning Big South Player of the Week laurels and Jelena Antic taking home Big South Freshman of the Week honors.

Warley became the fourth Big South player to capture the Player of the Week award multiple times this season, while Antic was one of two conference players to win three Freshman of the Week honors in 2009-10. Antic is Liberty's first three-time Freshman of the Week honoree since Kristal Tharp in 2001-02.

Bravo to Brown

Devon Brown won the Big South Player of the Week award on Feb. 9, for the second time this season. She averaged 24.5 ppg and 11.0 rpg during the Lady Flames' road wins at High Point and Radford.

Brown was one of four conference players to capture a pair of Big South Player of the Week awards in 2009-10. It also marked the fourth consecutive week a Liberty player received a conference award. Jelena Antic captured back-to-back Big South Freshman of the Week plaudits on Jan. 12 and 19, while Avery Warley was recognized as Big South Player of the Week on Jan. 26.

Warley Wins

Redshirt sophomore forward Avery Warley averaged 16.5 ppg and 14.0 rpg as Liberty went 2-0 on its annual South Carolina "Beach Trip." As a result, she earned the first Big South Player of the Week award of her career on Jan. 26.

Antic Repeats

Jelena Antic claimed her second consecutive Big South Freshman of the Week certificate on Jan. 19, after averaging 13.3 ppg and 5.7 rpg in a trio of Liberty victories.

Freshman of the Week

LaKendra Washington's 21-point, four-steal performance at Lafayette on Nov. 28 was recognized by the Big South Conference on Dec. 1. The freshman guard was named the Big South Freshman of the Week, marking the second consecutive week a Liberty rookie was honored by the Big South.

First Since Frazee

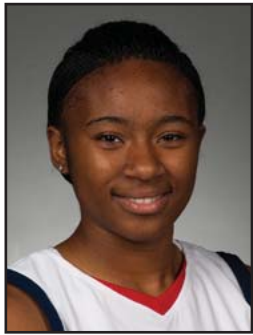
After averaging 21.0 ppg and 10.7 rpg during Liberty's 3-0 week, Devon Brown was honored as Big South Player of the Week on Nov. 24. She became the first Lady Flames freshman to win the award since Megan Frazee captured it twice during her rookie season (Dec. 5, 2005 & Jan. 16, 2006).

Liberty's 2009-10 Starting Lineups

Game	Date	Opponent	Result	Guard	Guard	Guard	Forward	Forward	Record
1	Nov. 13	WSSU	W, 71-26	Mays	McLeod	Brown	Beecher	Warley	1-0
2	Nov. 17	UNCG	W, 60-42	Mays	McLeod	Brown	Beecher	Warley	2-0
3	Nov. 20	Tulane	W, 63-52	Mays	McLeod	Brown	Beecher	Warley	3-0
4	Nov. 21	Navy	W, 55-43	Mays	McLeod	Brown	Beecher	Warley	4-0
5	Nov. 28	Lafayette	W, 90-55	Mays	McLeod	Brown	Beecher	Warley	5-0
6	Dec. 1	JMU	L, 50-60	Mays	McLeod	Brown	Beecher	Warley	5-1
7	Dec. 5	Glennville St.	W, 86-45	Mays	McLeod	Brown	Beecher	Warley	6-1
8	Dec. 15	Auburn	L, 64-70	Mays	McLeod	Brown	Beecher	Warley	6-2
9	Dec. 28	Cornell	W, 70-40	Mays	McLeod	Brown	Antic	Warley	1-0
10	Dec. 29	Virginia	L, 54-63	Mays	McLeod	Brown	Antic	Warley	1-1
11	Jan. 2	G.-Webb	L, 65-70	Mays	McLeod	Brown	Antic	Warley	1-2
12	Jan. 5	N.C. A&T	W, 57-51	Mays	McLeod	Brown	Antic	Warley	2-2
13	Jan. 9	Winthrop	W, 67-38	Mays	McLeod	Brown	Antic	Warley	3-2
14	Jan. 12	Longwood	W, 78-55	Mays	McLeod	Brown	Antic	Warley	4-2
15	Jan. 16	Presbyterian	W, 73-27	Mays	McLeod	Brown	Antic	Warley	5-2
16	Jan. 18	UNCA	W, 82-40	Mays	McLeod	Brown	Antic	Warley	6-2
17	Jan. 23	CSU	W, 65-52	Mays	McLeod	Brown	Beecher	Warley	7-2
18	Jan. 25	Coastal Car.	W, 57-38	Mays	McLeod	Brown	Beecher	Warley	8-2
19	Jan. 30	High Point	W, 75-62	Mays	McLeod	Brown	Beecher	Warley	9-2
20	Feb. 1	Radford	W, 63-45	Mays	McLeod	Brown	Beecher	Warley	10-2
21	Feb. 4	N.C. Central	W, 64-44	Mays	McLeod	Brown	Beecher	Warley	11-2
22	Feb. 8	G.-Webb	L, 56-59	Mays	McLeod	Brown	Beecher	Warley	11-3
23	Feb. 15	Winthrop	W, 52-18	Mays	McLeod	Brown	Beecher	Warley	12-3
24	Feb. 20	Coastal Car.	W, 57-55	Mays	McLeod	Brown	Beecher	Warley	13-3
25	Feb. 22	CSU	W, 66-56	Mays	McLeod	Brown	Beecher	Warley	14-3
26	Feb. 27	UNCA	W, 94-66	Mays	McLeod	Brown	Beecher	Warley	15-3
27	Mar. 1	Presbyterian	W, 55-40	Mays	McLeod	Brown	Beecher	Warley	16-3
28	Mar. 5	Radford	W, 66-33	Mays	McLeod	Brown	Beecher	Warley	17-3
29	Mar. 8	High Point	W, 73-48	Mays	McLeod	Brown	Beecher	Warley	18-3
30	Mar. 12	Radford	W, 70-52	Mays	McLeod	Brown	Beecher	Warley	19-3
31	Mar. 13	High Point	W, 73-55	Mays	McLeod	Brown	Beecher	Warley	20-3
32	Mar. 14	G.-Webb	W, 68-66	Mays	McLeod	Brown	Beecher	Warley	21-3

Miscellaneous Stats

Date	Opponent	LU Result	LU Big				LU in			Paint		Off TOs		2nd Ch		Bench	
			Lead	Opp Lead	Ties	LC	Lead	Opp in Lead	Tied	LU	Opp	LU	Opp	LU	Opp	LU	Opp
Nov. 13	Winston-Salem State	W, 71-26	45	0	0	0	38:11	0:00	1:49	38	12	35	10	13	7	18	15
Nov. 17	UNC Greensboro	W, 60-42	19	2	1	1	35:17	0:18	4:25	40	10	18	14	9	9	10	17
Nov. 20	Tulane	W, 63-52	20	2	1	1	37:33	1:16	1:11	34	18	23	18	9	2	11	9
Nov. 21	Navy	W, 55-43	12	16	0	1	12:24	26:56	0:40	26	12	16	12	16	6	8	11
Nov. 28	Lafayette	W, 90-55	36	0	0	0	39:41	0:00	0:19	64	16	38	22	23	6	34	10
Dec. 1	James Madison	L, 50-60	2	15	1	1	1:53	35:58	2:09	30	24	10	12	13	12	6	19
Dec. 5	Glennville State	W, 86-45	42	0	0	0	39:56	0:00	0:04	64	10	19	17	15	16	34	20
Dec. 15	Auburn	L, 64-70	2	14	2	4	0:54	37:50	1:16	42	20	16	11	6	16	8	25
Dec. 28	Cornell	W, 70-40	36	0	0	0	39:48	0:00	0:12	44	6	22	12	15	6	24	9
Dec. 29	No. 21/23 Virginia	L, 54-63	6	11	6	17	15:09	21:19	3:32	36	28	14	35	14	7	16	21
Jan. 2	Gardner-Webb	L, 65-70	0	13	4	0	0:00	37:52	2:08	34	20	13	21	10	5	20	17
Jan. 5	North Carolina A&T	W, 57-51	14	2	1	2	37:12	1:21	1:27	32	18	21	20	17	0	9	7
Jan. 9	Winthrop	W, 67-38	35	7	2	3	30:52	5:41	3:27	34	12	29	8	10	2	25	21
Jan. 12	Longwood	W, 78-55	24	0	0	0	39:24	0:00	0:36	54	18	27	24	19	11	19	26
Jan. 16	Presbyterian	W, 73-27	49	0	0	0	39:45	0:00	0:15	38	12	39	6	7	4	21	12
Jan. 18	UNC Asheville	W, 82-40	46	0	2	0	37:08	0:00	2:52	38	12	33	12	23	11	33	11
Jan. 23	Charleston Southern	W, 65-52	18	0	0	0	39:56	0:00	0:04	48	6	13	19	16	7	9	18
Jan. 25	Coastal Carolina	W, 57-38	19	10	5	7	17:01	17:44	5:15	20	8	25	6	18	5	9	6
Jan. 30	High Point	W, 75-62	13	9	10	11	13:29	20:16	6:15	42	22	16	9	16	2	8	21
Feb. 1	Radford	W, 63-45	18	2	2	1	36:57	1:12	1:51	36	12	27	13	10	14	7	17
Feb. 4	N.C. Central	W, 64-44	20	0	0	0	39:08	0:00	0:52	42	22	17	13	20	8	21	17
Feb. 8	Gardner-Webb	L, 56-59	9	6	2	8	26:46	10:47	2:27	34	30	18	15	15	5	9	11
Feb. 15	Winthrop	W, 52-18	34	0	0	0	38:42	0:00	1:18	30	8	19	7	11	0	20	13
Feb. 20	Coastal Carolina	W, 57-55	12	5	2	2	35:46	2:33	1:41	44	12	16	19	5	5	17	5
Feb. 22	Charleston Southern	W, 66-56	17	2	4	6	33:59	3:55	2:06	44	16	29	23	22	6	10	18
Feb. 27	UNC Asheville	W, 94-66	33	1	2	4	38:39	0:26	0:55	50	23	42	15	22	4	40	24
Mar. 1	Presbyterian	W, 55-40	21	0	0	0	39:42	0:00	0:18	30	8	17	19	15	4	17	19
Mar. 5	Radford	W, 66-33	34	0	1	0	39:35	0:00	0:25	48	8	25	13	18	8	31	10
Mar. 8	High Point	W, 73-48	25	2	3	3	35:48	1:11	3:01	48	16	25	10	16	12	20	22
Mar. 12	Radford	W, 70-52	24	0	0	0	39:57	0:00	0:03	42	20	25	9	11	7	25	10
Mar. 13	High Point	W, 73-55	20	8	3	4	22:54	14:33	2:33	38	26	19	13	11	0	24	25
Mar. 14	Gardner-Webb	W, 68-66	20	2	5	4	37:02	0:51	2:07	44	28	21	24	16	21	15	17



1

**LaKendra
Washington**

*5-8 Freshman Guard
Milwaukee, Wis.
The Hope School*

Season/Career Highs

Points - 21

at Lafayette (11-28-09)

FG Made - 9

at Lafayette (11-28-09)

FG Attempts - 12 (Two times)

Most recently, at Lafayette (11-28-09)

3FG Made - 2 (Three times)

Most recently, vs. NCCU (02-04-10)

3FG Attempts - 6

vs. Winston-Salem State (11-13-09)

FT Made - 4

vs. Radford (03-05-10)

FT Attempts - 6

vs. Radford (03-05-10)

Rebounds - 5 (Three times)

Most recently, at Virginia (12-29-09)

Assists - 4

at UNC Asheville (02-27-10)

Steals - 5

vs. Winston-Salem State (11-13-09)

Blocks - 1 (Three times)

Most recently, vs. NCCU (02-04-10)

2009-10 Game-By-Game Statistics

OPPONENT	DATE	MIN	FG-FGA	3FG-FGA	FT-FTA	OFF-DEF-TOT	A	TO	BLK	STL	PTS
Winston-Salem St.	11-13-09	22	4-12	1-6	0-0	0-2-2	1	3	0	5	9
UNC Greensboro	11-17-09	9	0-2	0-2	2-2	0-0-0	0	0	0	1	2
Tulane	11-20-09	10	1-2	0-1	0-0	0-1-1	0	2	1	0	2
Navy	11-21-09	15	2-3	0-0	2-4	0-4-4	0	1	0	0	6
Lafayette	11-28-09	26	9-12	1-2	2-4	0-0-0	2	1	0	4	21
James Madison	12-01-09	8	1-4	0-0	0-0	1-0-1	0	0	0	0	2
Glenville St.	12-05-09	20	4-9	0-0	0-0	1-4-5	2	5	0	2	8
Auburn	12-15-09	11	1-3	0-1	0-0	0-1-1	0	0	0	0	2
Cornell	12-28-09	21	4-10	0-3	1-2	1-4-5	2	3	1	2	9
Virginia	12-29-09	15	2-4	0-0	1-1	3-2-5	1	3	0	2	5
Gardner-Webb	01-02-10	7	0-2	0-0	0-0	0-0-0	0	0	0	1	0
N.C. A&T	01-05-10	14	0-4	0-1	0-0	1-1-2	0	2	0	0	0
Winthrop	01-09-10	17	2-5	1-2	0-0	1-0-1	1	1	0	3	5
Longwood	01-12-10	8	0-2	0-2	1-2	2-0-2	1	4	0	0	1
Presbyterian	01-16-10	20	3-5	0-2	0-0	1-2-3	0	5	0	2	6
UNC Asheville	01-18-10	16	2-6	2-4	0-3	1-0-1	0	2	0	4	6
Charleston So.	01-23-10	13	2-3	0-1	0-0	0-1-1	0	0	0	1	4
Coastal Carolina	01-25-10	12	2-3	2-2	1-2	0-1-1	0	0	0	0	7
High Point	01-30-10	3	0-0	0-0	0-0	0-0-0	0	0	0	0	0
Radford	02-01-10	18	0-0	0-0	0-0	0-0-0	1	3	0	0	0
N.C. Central	02-04-10	21	2-3	2-3	0-0	1-1-2	2	4	1	3	6
Gardner-Webb	02-08-10	4	0-0	0-0	0-0	0-0-0	1	0	0	0	0
Winthrop	02-15-10	17	1-1	0-0	0-1	1-1-2	1	2	0	3	2
Coastal Carolina	02-20-10	12	2-3	0-1	0-0	0-1-1	0	0	0	0	4
Charleston So.	02-22-10	5	0-0	0-0	0-0	1-0-1	0	1	0	0	0
UNC Asheville	02-27-10	23	5-9	1-3	1-2	0-0-0	4	0	0	3	12
Presbyterian	03-01-10	23	1-2	0-1	0-1	1-1-2	0	5	0	0	2
Radford	03-05-10	27	5-5	0-0	4-6	0-1-1	1	3	0	3	14
High Point	03-08-10	18	1-5	0-2	0-0	0-0-0	1	1	0	2	2
Radford	03-12-10	21	1-6	0-0	0-2	1-2-3	0	2	0	1	2
High Point	03-13-10	9	1-2	0-1	0-0	0-0-0	1	0	0	1	2
Gardner-Webb	03-14-10	4	0-0	0-0	0-0	0-0-0	0	1	0	0	0

2009-10 Notes/Highlights

-- Tabbed Big South Freshman of the Week on Dec. 1.

-- Became Liberty's first true freshman to score 20 points in a game since Megan Frazee during the 2005-06 season, when she exploded for 21 points at Lafayette on Nov. 28.

Career Stats

Season	GP	GS	Min	Avg	FG	FGA	Pct	3FG	3FGA	Pct	FT	FTA	Pct	ORB	DRB	TOT	Avg	Asst	TO	Blk	Stl	Pts	Avg
2009-10	32	0	469	14.7	58	127	.457	10	40	.250	15	32	.469	17	30	47	1.5	22	54	3	43	141	4.4



11

Jelena Antic

6-2 Freshman G/F

Skopje, Macedonia

Liberty Christian Academy

Season/Career Highs

Points - 19

vs. Longwood (01-12-10)

FG Made - 8

vs. Longwood (01-12-10)

FG Attempts - 11

vs. Longwood (01-12-10)

3FG Made - 2

at Gardner-Webb (01-02-10)

3FG Attempts - 3 (Two times)

Most recently, vs. G.-Webb (03-14-10)

FT Made - 6

vs. North Carolina A&T (01-05-10)

FT Attempts - 7

vs. North Carolina A&T (01-05-10)

Rebounds - 10 (Two times)

Most recently, vs. Longwood (01-12-10)

Assists - 4

vs. North Carolina A&T (01-05-10)

Steals - 3 (Three times)

Most recently, at Presby. (03-01-10)

Blocks - 1 (Three times)

Most recently, vs. Radford (03-05-10)

2009-10 Game-By-Game Statistics

OPPONENT	DATE	MIN	FG-FGA	3FG-FGA	FT-FTA	OFF-DEF-TOT	A	TO	BLK	STL	PTS
Winston-Salem St.	11-13-09					Did not play					
UNC Greensboro	11-17-09					Did not play					
Tulane	11-20-09					Did not play					
Navy	11-21-09	18	0-4	0-0	0-1	4-1-5	3	1	0	0	0
Lafayette	11-28-09	23	2-5	0-0	0-1	2-2-4	2	2	0	3	4
James Madison	12-01-09	12	0-3	0-1	1-2	0-4-4	0	2	0	0	1
Glenville St.	12-05-09	24	5-8	0-0	2-4	2-8-10	0	6	0	1	12
Auburn	12-15-09	23	2-8	0-3	0-0	2-1-3	1	3	0	1	4
Cornell	12-28-09	21	4-5	1-1	2-2	4-4-8	2	1	0	0	11
Virginia	12-29-09	34	2-7	1-1	0-0	3-0-3	3	1	1	0	5
Gardner-Webb	01-02-10	25	4-6	2-2	0-0	3-2-5	1	1	0	0	10
N.C. A&T	01-05-10	29	4-8	0-0	6-7	1-3-4	4	3	1	1	14
Winthrop	01-09-10	27	4-7	0-1	1-1	3-3-6	1	3	0	1	9
Longwood	01-12-10	30	8-11	0-0	3-5	5-5-10	2	5	0	2	19
Presbyterian	01-16-10	24	7-7	0-0	0-0	1-2-3	1	3	0	3	14
UNC Asheville	01-18-10	18	3-5	1-1	0-0	4-0-4	0	3	0	0	7
Charleston So.	01-23-10					Did not play					
Coastal Carolina	01-25-10					Did not play					
High Point	01-30-10					Did not play					
Radford	02-01-10					Did not play					
N.C. Central	02-04-10					Did not play					
Gardner-Webb	02-08-10					Did not play					
Winthrop	02-15-10					Did not play					
Coastal Carolina	02-20-10	20	0-2	0-1	2-4	1-2-3	1	2	0	2	2
Charleston So.	02-22-10	19	2-4	0-0	0-2	2-4-6	3	3	0	1	4
UNC Asheville	02-27-10	24	6-8	1-1	0-0	4-1-5	2	1	0	1	13
Presbyterian	03-01-10	20	2-5	0-2	2-2	2-1-3	3	1	0	3	6
Radford	03-05-10	22	4-9	0-0	4-6	5-3-8	2	1	1	0	12
High Point	03-08-10	22	6-6	0-0	1-2	1-1-2	1	2	0	1	13
Radford	03-12-10	19	2-8	0-0	3-4	2-2-4	0	2	0	1	7
High Point	03-13-10	23	3-5	1-1	0-0	3-4-7	0	0	0	0	7
Gardner-Webb	03-14-10	27	4-8	1-3	0-0	2-1-3	2	2	0	1	9

2009-10 Notes/Highlights

- Made the Big South All-Freshman team.
- Liberty's first three-time Big South Freshman of the Week since Kristal Tharp in 2001-02, capturing the honor on Jan. 12, Jan. 19 and March 9. One of only two conference players to win a trio of Big South Freshman of the Week awards this season.
- Returned to action versus Coastal Carolina on Feb. 20, after missing seven games due to a leg injury.
- Made her first appearance in the starting lineup, Dec. 28 versus Cornell.
- Has connected on eight of her last 14 three-pointers (.571), dating back to a Dec. 28 victory over Cornell.

Career Stats

Season	GP	GS	Min	Avg	FG	FGA	Pct	3FG	3FGA	Pct	FT	FTA	Pct	ORB	DRB	TOT	Avg	Asst	TO	Blk	Stl	Pts	Avg
2009-10	22	8	504	22.9	74	139	.532	8	18	.444	27	43	.628	56	54	110	5.0	34	48	3	22	183	8.3



12

Danika Dale

*6-1 Sophomore G/F
Fort Hood, Texas
Shoemaker HS*

Season Highs

Points - 15

vs. N.C. Central (02-04-10)

FG Made - 5

vs. N.C. Central (02-04-10)

FG Attempts - 8

at Winthrop (02-15-10)

3FG Made - 2

at UNC Asheville (02-27-10)

3FG Attempts - 3 (Three times)

Most recently, at UNCA (02-27-10)

FT Made - 5

vs. N.C. Central (02-04-10)

FT Attempts - 10

vs. Radford (03-12-10)

Rebounds - 9

vs. Glenville State (12-05-09)

Assists - 3 (Four times)

Most recently, at UNCA (02-27-10)

Steals - 5

vs. Radford (03-05-10)

Blocks - 2 (Four times)

Most recently, at Radford (02-01-10)

Career Highs

Points - 15

vs. N.C. Central (02-04-10)

FG Made - 5

vs. N.C. Central (02-04-10)

FG Attempts - 8

at Winthrop (02-15-10)

3FG Made - 2 (Two times)

Most recently, at UNCA (02-27-10)

3FG Attempts - 3 (Five times)

Most recently, at UNCA (02-27-10)

FT Made - 5

vs. N.C. Central (02-04-10)

FT Attempts - 10

vs. Radford (03-12-10)

Rebounds - 9

vs. Glenville State (12-05-09)

Assists - 6

vs. Presbyterian (03-02-09)

Steals - 5

vs. Radford (03-05-10)

Blocks - 2 (Four times)

Most recently, at Radford (02-01-10)

2009-10 Game-By-Game Statistics

OPPONENT	DATE	MIN	FG-FGA	3FG-FGA	FT-FTA	OFF-DEF-TOT	A	TO	BLK	STL	PTS
Winston-Salem St.	11-13-09	23	1-5	0-2	4-4	2-5-7	3	3	2	3	6
UNC Greensboro	11-17-09	16	0-3	0-0	0-0	1-3-4	0	1	2	2	0
Tulane	11-20-09	11	0-1	0-0	0-0	1-0-1	1	1	0	2	0
Navy	11-21-09	3	0-2	0-2	0-0	1-1-2	1	0	0	0	0
Lafayette	11-28-09	15	2-2	1-1	1-2	0-4-4	1	0	0	0	6
James Madison	12-01-09	21	1-4	1-1	0-0	0-5-5	1	2	2	0	3
Glenville St.	12-05-09	19	2-3	0-0	2-3	1-8-9	3	4	0	3	6
Auburn	12-15-09	4	0-1	0-0	0-0	0-0-0	0	1	0	0	0
Cornell	12-28-09	19	2-4	0-1	1-2	3-4-7	2	0	0	0	5
Virginia	12-29-09	14	1-6	0-3	1-2	1-3-4	0	4	0	0	3
Gardner-Webb	01-02-10	12	4-5	1-2	1-2	0-0-0	1	2	0	0	10
N.C. A&T	01-05-10	10	1-2	0-0	0-1	0-2-2	1	2	0	0	2
Winthrop	01-09-10	20	2-3	0-1	0-0	2-3-5	3	1	0	1	4
Longwood	01-12-10	9	1-3	0-1	0-0	2-2-4	1	1	0	1	2
Presbyterian	01-16-10	18	2-6	1-3	0-0	2-3-5	1	3	0	1	5
UNC Asheville	01-18-10	12	2-4	0-1	1-1	2-1-3	1	2	1	1	5
Charleston So.	01-23-10	19	1-4	0-1	1-2	2-2-4	2	3	0	1	3
Coastal Carolina	01-25-10	24	0-2	0-0	0-0	0-4-4	2	1	1	2	0
High Point	01-30-10	21	0-2	0-0	2-2	1-1-2	0	0	0	1	2
Radford	02-01-10	20	1-2	0-0	0-0	0-1-1	0	1	2	1	2
N.C. Central	02-04-10	23	5-7	0-0	5-8	2-1-3	2	3	1	0	15
Gardner-Webb	02-08-10	21	2-3	1-1	1-1	0-0-0	0	1	0	0	6
Winthrop	02-15-10	23	4-8	0-0	3-3	1-4-5	0	5	0	0	11
Coastal Carolina	02-20-10	12	1-1	0-0	3-4	0-0-0	0	0	0	0	5
Charleston So.	02-22-10	9	0-0	0-0	1-2	0-0-0	0	0	0	0	1
UNC Asheville	02-27-10	19	3-6	2-3	2-7	1-3-4	3	3	0	1	10
Presbyterian	03-01-10	17	1-6	0-0	0-0	1-2-3	0	0	0	0	2
Radford	03-05-10	24	2-5	0-1	0-0	1-3-4	2	4	0	5	4
High Point	03-08-10	21	1-2	0-0	2-2	1-6-7	1	2	0	1	4
Radford	03-12-10	18	3-7	0-0	4-10	1-3-4	2	2	1	2	10
High Point	03-13-10	16	1-4	0-0	0-0	0-2-2	0	1	0	1	2
Gardner-Webb	03-14-10	10	1-1	0-0	1-1	0-0-0	0	2	0	1	3

2009-10 Notes/Highlights

Career Stats

Season	GP	GS	Min	Avg	FG	FGA	Pct	3FG	3FGA	Pct	FT	FTA	Pct	ORB	DRB	TOT	Avg	Asst	TO	Blk	Stl	Pts	Avg
2008-09	26	0	254	9.8	16	45	.356	3	15	.200	8	18	.444	10	33	43	1.7	21	27	2	12	43	1.7
2009-10	32	0	523	16.3	47	114	.412	7	24	.292	36	59	.610	29	76	105	3.3	34	55	12	30	137	4.3
TOTAL	58	0	777	13.4	63	159	.396	10	39	.256	44	77	.571	39	109	148	2.6	55	82	14	42	180	3.1



15

Kylee Beecher
6-4 Sophomore F
Roanoke, Va.
Hidden Valley HS

Season Highs

Points - 14 (Two times)

Most recently, vs. UNCA (01-18-10)

FG Made - 7

vs. Glenville State (12-05-09)

FG Attempts - 9

at Charleston So. (01-23-10)

3FG Made - 1

at Winthrop (02-15-10)

3FG Attempts - 2 (Three times)

Most recently, at Winthrop (02-15-10)

FT Made - 8

vs. UNC Asheville (01-18-10)

FT Attempts - 10

vs. UNC Asheville (01-18-10)

Rebounds - 9 (Four times)

Most recently, at UNCA (02-27-10)

Assists - 4

vs. N.C. Central (02-04-10)

Steals - 3

at Radford (02-01-10)

Blocks - 2

at Winthrop (02-15-10)

Career Highs

Points - 18

vs. Saint Paul's (12-13-08)

FG Made - 7

vs. Glenville State (12-05-09)

FG Attempts - 10

vs. Saint Paul's (12-13-08)

3FG Made - 1 (Three times)

Most recently, at Winthrop (02-15-10)

3FG Attempts - 2 (Five times)

Most recently, at Winthrop (02-15-10)

FT Made - 8

vs. UNC Asheville (01-18-10)

FT Attempts - 10

vs. UNC Asheville (01-18-10)

Rebounds - 10 (Three times)

Most recently, vs. High Point (01-31-09)

Assists - 5

vs. Saint Paul's (12-13-08)

Steals - 3 (Three times)

Most recently, at Radford (02-01-10)

Blocks - 2

at Winthrop (02-15-10)

2009-10 Game-By-Game Statistics

OPPONENT	DATE	MIN	FG-FGA	3FG-FGA	FT-FTA	OFF-DEF-TOT	A	TO	BLK	STL	PTS
Winston-Salem St.	11-13-09	23	2-3	0-0	4-4	1-1-2	2	0	1	0	8
UNC Greensboro	11-17-09	37	4-8	0-0	3-7	2-3-5	0	4	0	0	11
Tulane	11-20-09	36	3-5	0-0	0-0	3-0-3	2	4	0	1	6
Navy	11-21-09	36	2-8	0-1	0-0	0-2-2	0	2	0	1	4
Lafayette	11-28-09	25	2-2	0-0	1-2	1-2-3	2	0	1	0	5
James Madison	12-01-09	26	2-4	0-0	0-0	3-3-6	1	1	1	2	4
Glenville St.	12-05-09	21	7-8	0-0	0-0	4-2-6	0	1	0	0	14
Auburn	12-15-09	25	1-4	0-0	5-6	0-0-0	1	0	0	2	7
Cornell	12-28-09	20	2-6	0-2	1-2	3-0-3	0	4	0	0	5
Virginia	12-29-09	21	2-4	0-1	2-2	2-0-2	0	0	0	0	6
Gardner-Webb	01-02-10	16	1-3	0-1	2-3	0-3-3	0	1	0	0	4
N.C. A&T	01-05-10	18	0-1	0-0	0-0	0-3-3	0	4	1	1	0
Winthrop	01-09-10	19	2-3	0-0	1-1	0-2-2	2	1	1	1	5
Longwood	01-12-10	25	3-5	0-0	4-5	1-5-6	1	3	0	0	10
Presbyterian	01-16-10	18	1-1	0-0	3-6	0-3-3	1	2	0	1	5
UNC Asheville	01-18-10	27	3-8	0-0	8-10	2-3-5	2	2	0	2	14
Charleston So.	01-23-10	33	4-9	0-0	2-2	4-5-9	0	2	0	2	10
Coastal Carolina	01-25-10	32	2-6	0-0	2-2	8-1-9	1	2	0	1	6
High Point	01-30-10	21	0-4	0-1	3-4	2-2-4	2	0	0	0	3
Radford	02-01-10	38	5-8	0-0	3-4	3-6-9	0	4	0	3	13
N.C. Central	02-04-10	19	1-7	0-0	1-2	1-1-2	4	3	0	0	3
Gardner-Webb	02-08-10	30	2-6	0-2	0-0	3-1-4	2	0	0	1	4
Winthrop	02-15-10	29	2-7	1-2	4-6	1-4-5	1	0	2	1	9
Coastal Carolina	02-20-10	25	4-7	0-1	1-1	1-0-1	0	2	0	1	9
Charleston So.	02-22-10	28	0-3	0-1	4-4	1-1-2	1	1	0	0	4
UNC Asheville	02-27-10	17	3-7	0-0	6-7	6-3-9	0	3	0	0	12
Presbyterian	03-01-10	18	1-2	0-0	0-0	2-1-3	0	2	0	0	2
Radford	03-05-10	24	1-5	0-0	2-2	0-2-2	1	2	0	0	4
High Point	03-08-10	24	2-5	0-0	0-0	2-1-3	1	2	0	0	4
Radford	03-12-10	22	1-2	0-0	0-0	3-3-6	3	1	0	0	2
High Point	03-13-10	34	1-4	0-0	2-4	2-5-7	1	1	0	2	4
Gardner-Webb	03-14-10	19	4-4	0-0	1-1	0-1-1	0	4	0	2	9

2009-10 Notes/Highlights

-- Ranks No. 15 in the Big South with 1.9 offensive rebounds per game.

-- Needs 18 boards to become one of the top 50 rebounders in program history.

Career Stats

Season	GP	GS	Min	Avg	FG	FGA	Pct	3FG	3FGA	Pct	FT	FTA	Pct	ORB	DRB	TOT	Avg	Asst	TO	Blk	Stl	Pts	Avg
2008-09	31	4	664	21.4	54	118	.458	2	7	.286	27	38	.711	43	97	140	4.5	19	45	2	18	137	4.4
2009-10	32	24	806	25.2	70	159	.440	1	12	.083	65	87	.747	61	69	130	4.1	31	58	7	24	206	6.4
TOTAL	63	28	1470	23.3	124	277	.448	3	19	.158	92	125	.736	104	166	270	4.3	50	103	9	42	343	5.4



21

Amber Mays
5-6 Senior Guard
Pasadena, Calif.
Pasadena HS
(State Fair CC)

Season Highs

Points - 21

at High Point (03-13-10)

FG Made - 9

at Auburn (12-15-09)

FG Attempts - 15

vs. James Madison (12-01-09)

3FG Made - 2

vs. UNC Asheville (01-18-10)

3FG Attempts - 2

vs. UNC Asheville (01-18-10)

FT Made - 4 (Three times)

Most recently, at High Point (03-13-10)

FT Attempts - 7

at Coastal Carolina (01-25-10)

Rebounds - 5 (Two times)

Most recently, at High Point (01-30-10)

Assists - 10

vs. Winthrop (01-09-10)

Steals - 5

vs. Longwood (01-12-10)

Blocks - 1 (Two times)

Most recently, at High Point (03-13-10)

Career Highs

Points - 21

at High Point (03-13-10)

FG Made - 9

at Auburn (12-15-09)

FG Attempts - 15

vs. James Madison (12-01-09)

3FG Made - 2 (Two times)

Most recently, vs. UNCA (01-18-10)

3FG Attempts - 3

at Vanderbilt (12-22-08)

FT Made - 6

at UNC Asheville (01-19-09)

FT Attempts - 8

vs. UC Riverside (11-21-08)

Rebounds - 6 (Two times)

Most recently, vs. Radford (02-02-09)

Assists - 10

vs. Winthrop (01-09-10)

Steals - 8

vs. East Tennessee St. (01-13-09)

Blocks - 1 (Four times)

Most recently, at High Point (03-13-10)

2009-10 Game-By-Game Statistics

OPPONENT	DATE	MIN	FG-FGA	3FG-FGA	FT-FTA	OFF-DEF-TOT	A	TO	BLK	STL	PTS
Winston-Salem St.	11-13-09	24	3-7	0-0	1-2	0-0-0	6	1	0	4	7
UNC Greensboro	11-17-09	26	4-7	1-1	2-6	0-1-1	4	5	0	4	11
Tulane	11-20-09	33	4-6	0-0	2-4	0-2-2	3	4	0	4	10
Navy	11-21-09	30	2-5	0-0	4-5	2-0-2	5	3	0	1	8
Lafayette	11-28-09	31	4-6	0-0	3-4	1-3-4	4	5	0	4	11
James Madison	12-01-09	33	7-15	0-1	0-1	0-2-2	2	1	0	1	14
Glenville St.	12-05-09	18	2-3	0-0	1-2	0-2-2	4	2	0	2	5
Auburn	12-15-09	35	9-13	0-0	0-0	0-1-1	3	6	0	4	18
Cornell	12-28-09	20	2-2	0-0	0-0	0-2-2	8	2	0	4	4
Virginia	12-29-09	28	2-4	0-0	3-4	0-0-0	3	7	0	3	7
Gardner-Webb	01-02-10	33	4-9	0-0	2-6	3-2-5	6	4	0	1	10
N.C. A&T	01-05-10	25	2-4	0-0	0-0	0-2-2	3	2	0	1	4
Winthrop	01-09-10	22	1-3	0-0	1-2	0-0-0	10	2	0	2	3
Longwood	01-12-10	30	3-4	1-1	0-0	0-0-0	3	5	0	5	7
Presbyterian	01-16-10	21	4-6	0-0	0-0	0-2-2	6	1	0	2	8
UNC Asheville	01-18-10	23	5-8	2-2	2-2	1-0-1	5	0	0	3	14
Charleston So.	01-23-10	27	6-9	0-0	2-5	0-0-0	3	1	1	1	14
Coastal Carolina	01-25-10	31	2-6	0-1	4-7	1-1-2	2	4	0	2	8
High Point	01-30-10	26	2-6	0-0	3-4	0-5-5	2	6	0	1	7
Radford	02-01-10	24	4-6	0-0	2-4	1-0-1	7	5	0	3	10
N.C. Central	02-04-10	28	3-6	0-0	2-2	0-2-2	8	4	0	1	8
Gardner-Webb	02-08-10	34	2-7	0-1	2-6	1-0-1	3	2	0	2	6
Winthrop	02-15-10	20	0-1	0-0	1-2	0-1-1	1	4	0	0	1
Coastal Carolina	02-20-10	34	6-10	0-0	0-0	1-2-3	2	1	0	1	12
Charleston So.	02-22-10	20	2-3	0-0	2-4	0-0-0	0	5	0	1	6
UNC Asheville	02-27-10	19	2-6	0-0	2-4	0-2-2	2	2	0	3	6
Presbyterian	03-01-10	25	2-4	0-0	1-1	0-1-1	1	3	0	3	5
Radford	03-05-10	16	2-5	0-0	0-0	1-1-2	2	1	0	2	4
High Point	03-08-10	26	4-7	0-1	2-2	0-0-0	5	3	0	2	10
Radford	03-12-10	20	2-4	0-0	2-4	0-3-3	2	2	0	1	6
High Point	03-13-10	27	8-9	1-1	4-5	0-3-3	3	3	1	4	21
Gardner-Webb	03-14-10	31	3-6	0-0	2-4	0-3-3	3	8	0	3	8

2009-10 Notes/Highlights

- Voted to the Big South All-Tournament team.
- The only senior on Liberty's 2009-10 roster.
- Ranks No. 3 in the Big South in assist-to-turnover ratio (1.16), assists (3.8 apg) and steals (2.3 spg).
- Her career-high 21 points versus High Point (March 13) in the Big South Championship semifinals made her the first Liberty point guard to score 20 points in a game since Irene Sloof tallied 20 points at Winthrop on Feb. 3, 2001.
- Distributed a career-high 10 assists against Winthrop (Jan. 9), the most by a Lady Flame since Daina Staugaitiene's 10 assists versus Morgan State on Nov. 22, 2002.
- Had recorded a steal in 24 consecutive games, prior to the Feb. 15 game at Winthrop. Has notched a steal in 41 of her last 43 outings.
- First Lady Flame to distribute 100 assists and come up with 50 steals in back-to-back seasons since Sarah Wilkerson did so three straight years (1996-97, 1997-98 and 1998-99).
- Went over the 500-point mark for her two-year career at Liberty during the Lady Flames' Big South semifinal win over High Point on March 13.

Career Stats

Season	GP	GS	Min	Avg	FG	FGA	Pct	3FG	3FGA	Pct	FT	FTA	Pct	ORB	DRB	TOT	Avg	Asst	TO	Blk	Stl	Pts	Avg
2008-09	33	31	1002	30.4	92	201	.458	5	15	.333	56	86	.651	11	75	86	2.6	126	114	2	68	245	7.4
2009-10	32	32	840	26.3	108	197	.548	5	9	.556	52	92	.565	12	43	55	1.7	121	104	2	75	273	8.5
TOTAL	65	63	1842	28.3	200	398	.503	10	24	.417	108	178	.607	23	118	141	2.2	247	218	4	143	518	8.0



23

Avery Warley
 6-3 R-Sophomore F
 Washington, D.C.
 H.D. Woodson HS

Season Highs

Points - 26
 at High Point (01-30-10)
FG Made - 9 (Two times)
 Most recently, vs. CSU (02-22-10)
FG Attempts - 14
 at UNC Asheville (02-27-10)
3FG Made - 0
 None
3FG Attempts - 1
 at UNC Asheville (02-27-10)
FT Made - 8
 at High Point (01-30-10)
FT Attempts - 11
 at High Point (01-30-10)
Rebounds - 16
 at Charleston So. (01-23-10)
Assists - 2 (Three times)
 Most recently, vs. UNCA (01-18-10)
Steals - 3 (Three times)
 Most recently, vs. CSU (02-22-10)
Blocks - 3 (Three times)
 Most recently, vs. High Point (03-08-10)

Career Highs

Points - 26
 at High Point (01-30-10)
FG Made - 9 (Two times)
 Most recently, vs. CSU (02-22-10)
FG Attempts - 14
 at UNC Asheville (02-27-10)
3FG Made - 0
 None
3FG Attempts - 1
 at UNC Asheville (02-27-10)
FT Made - 8
 at High Point (01-30-10)
FT Attempts - 11
 at High Point (01-30-10)
Rebounds - 18
 at Virginia Tech (12-30-08)
Assists - 3
 vs. Saint Paul's (12-13-08)
Steals - 3 (Five times)
 Most recently, vs. CSU (02-22-10)
Blocks - 4 (Two times)
 Most recently, vs. Winthrop (02-16-09)

2009-10 Game-By-Game Statistics

OPPONENT	DATE	MIN	FG-FGA	3FG-FGA	FT-FTA	OFF-DEF-TOT	A	TO	BLK	STL	PTS
Winston-Salem St.	11-13-09	26	2-6	0-0	0-2	4-5-9	2	5	0	0	4
UNC Greensboro	11-17-09	19	0-0	0-0	0-0	2-5-7	0	1	0	1	0
Tulane	11-20-09	37	4-10	0-0	1-2	6-5-11	1	4	0	1	9
Navy	11-21-09	32	5-7	0-0	0-0	3-3-6	0	6	0	0	10
Lafayette	11-28-09	21	8-13	0-0	3-3	8-3-11	0	1	0	0	19
James Madison	12-01-09	29	3-7	0-0	3-4	3-4-7	2	2	0	1	9
Glenville St.	12-05-09	25	3-6	0-0	1-4	2-4-6	0	1	1	0	7
Auburn	12-15-09	33	4-6	0-0	2-2	3-3-6	0	2	0	0	10
Cornell	12-28-09	22	4-5	0-0	2-6	2-5-7	0	2	1	1	10
Virginia	12-29-09	32	6-12	0-0	0-0	3-5-8	0	5	0	2	12
Gardner-Webb	01-02-10	26	4-8	0-0	2-5	3-3-6	0	5	1	3	10
N.C. A&T	01-05-10	26	4-8	0-0	1-4	6-5-11	0	5	0	2	9
Winthrop	01-09-10	23	2-2	0-0	1-2	1-4-5	1	5	1	1	5
Longwood	01-12-10	21	6-7	0-0	0-1	3-2-5	1	1	0	0	12
Presbyterian	01-16-10	25	1-2	0-0	4-7	2-0-2	0	3	0	1	6
UNC Asheville	01-18-10	24	2-8	0-0	2-6	4-6-10	2	2	3	0	6
Charleston So.	01-23-10	30	8-12	0-0	2-4	5-11-16	0	2	0	0	18
Coastal Carolina	01-25-10	28	6-9	0-0	3-8	7-5-12	0	2	1	0	15
High Point	01-30-10	38	9-13	0-0	8-11	5-9-14	0	0	1	2	26
Radford	02-01-10	24	2-4	0-0	0-0	1-4-5	0	1	2	1	4
N.C. Central	02-04-10	34	8-11	0-0	0-1	6-5-11	0	2	1	1	16
Gardner-Webb	02-08-10	32	5-10	0-0	5-7	3-7-10	0	3	2	1	15
Winthrop	02-15-10	26	2-3	0-0	0-0	3-5-8	1	1	3	2	4
Coastal Carolina	02-20-10	20	2-6	0-0	1-2	4-4-8	1	4	1	3	5
Charleston So.	02-22-10	34	9-9	0-0	4-9	6-4-10	1	2	0	3	22
UNC Asheville	02-27-10	20	8-14	0-1	6-9	7-3-10	0	1	0	2	22
Presbyterian	03-01-10	26	3-3	0-0	7-7	5-6-11	0	5	1	2	13
Radford	03-05-10	22	7-9	0-0	3-4	6-6-12	0	2	1	0	17
High Point	03-08-10	27	6-13	0-0	1-1	3-5-8	1	1	3	2	13
Radford	03-12-10	20	3-3	0-0	3-4	0-3-3	0	1	0	0	9
High Point	03-13-10	15	2-4	0-0	0-0	1-3-4	0	2	1	0	4
Gardner-Webb	03-14-10	29	3-6	0-0	0-0	4-5-9	0	2	1	0	6

2009-10 Notes/Highlights

- First team All-Big South selection.
- Two-time Big South Player of the Week (Jan. 26 and March 9).
- Set the Vines Center single-game field goal percentage record Feb. 22 versus Charleston Southern, connecting on all nine of her attempts. Made 11 consecutive field goals overall, including her first two shots at UNC Asheville on Feb. 27.
- Shot 7-7 from the free throw line, March 1 at Presbyterian, as part of a career-best string of 15 straight made foul shots (Feb. 27-March 5). Has made 19 of her last 21 free throw attempts.
- Leads the Big South in field goal percentage (.597) and ranks No. 2 in offensive rebounds (3.8 rpg), tied for No. 2 in total rebounds (8.4 rpg), No. 6 in defensive rebounds (4.6 rpg) and No. 9 in blocked shots (0.8 bpg).
- Named to the Marriott Cavalier Classic all-tournament team, after averaging 11.0 ppg and 7.5 rpg in two games.
- Has notched 10 double-doubles this season and 12 in her career.

Career Stats

Season	GP	GS	Min	Avg	FG	FGA	Pct	3FG	3FGA	Pct	FT	FTA	Pct	ORB	DRB	TOT	Avg	Asst	TO	Blk	Stl	Pts	Avg
2008-09	33	33	832	25.2	112	179	.626	0	0	.000	42	81	.519	85	171	256	7.8	11	76	47	23	266	8.1
2009-10	32	32	846	26.4	141	236	.597	0	1	.000	65	115	.565	121	147	268	8.4	13	81	25	32	347	10.8
TOTAL	65	65	1678	25.8	253	415	.610	0	1	.000	107	196	.546	206	318	524	8.1	24	157	72	55	613	9.4



25
Dymond Morgan
5-7 Junior Guard
Lynwood, Calif.
Lynwood HS
(Midland College)

Season/Career Highs

Points - 13
at High Point (03-13-10)
FG Made - 5
at High Point (03-13-10)
FG Attempts - 7 (Three times)
Most recently, at High Point (03-13-10)
3FG Made - 2
vs. Winthrop (01-09-10)
3FG Attempts - 3 (Two times)
Most recently, at Winthrop (02-15-10)
FT Made - 4
at Presbyterian (03-01-10)
FT Attempts - 5
at High Point (03-13-10)
Rebounds - 7
vs. Glenville State (12-05-09)
Assists - 7
vs. Glenville State (12-05-09)
Steals - 5
vs. Presbyterian (01-16-10)
Blocks - 1
vs. Gardner-Webb (03-14-10)

2009-10 Game-By-Game Statistics

OPPONENT	DATE	MIN	FG-FGA	3FG-FGA	FT-FTA	OFF-DEF-TOT	A	TO	BLK	STL	PTS
Winston-Salem St.	11-13-09	16	0-2	0-0	0-0	1-3-4	1	2	0	1	0
UNC Greensboro	11-17-09	24	3-5	0-1	0-0	1-4-5	2	2	0	1	6
Tulane	11-20-09	18	3-6	1-1	2-2	0-2-2	0	4	0	2	9
Navy	11-21-09	15	1-2	0-0	0-0	1-2-3	0	2	0	0	2
Lafayette	11-28-09	4	0-1	0-0	1-2	0-0-0	0	1	0	0	1
James Madison	12-01-09	7	0-0	0-0	0-0	0-0-0	0	1	0	0	0
Glenville St.	12-05-09	22	2-2	0-0	2-3	0-7-7	7	8	0	1	6
Auburn	12-15-09	10	1-1	0-0	0-0	0-2-2	0	0	0	1	2
Cornell	12-28-09	22	0-3	0-0	2-2	1-0-1	1	5	0	3	2
Virginia	12-29-09	12	1-2	0-0	0-0	1-0-1	0	3	0	0	2
Gardner-Webb	01-02-10	13	2-4	0-0	2-3	0-1-1	1	0	0	2	6
N.C. A&T	01-05-10	17	2-3	0-0	1-2	0-0-0	1	1	0	3	5
Winthrop	01-09-10	20	4-7	2-3	1-2	0-1-1	1	1	0	2	11
Longwood	01-12-10	15	2-6	0-1	2-2	0-3-3	3	2	0	1	6
Presbyterian	01-16-10	18	2-3	0-0	1-1	0-0-0	4	2	0	5	5
UNC Asheville	01-18-10	22	3-6	0-2	0-0	0-2-2	6	2	0	4	6
Charleston So.	01-23-10	13	0-2	0-1	2-3	0-1-1	0	3	0	0	2
Coastal Carolina	01-25-10	14	1-5	0-2	0-0	0-0-0	1	1	0	0	2
High Point	01-30-10	19	1-5	1-1	3-4	0-0-0	1	1	0	3	6
Radford	02-01-10	17	1-5	0-0	3-4	1-2-3	1	3	0	3	5
N.C. Central	02-04-10	12	0-3	0-2	0-0	1-0-1	1	1	0	0	0
Gardner-Webb	02-08-10	9	1-2	0-1	1-2	0-0-0	1	0	0	0	3
Winthrop	02-15-10	23	2-7	1-3	0-0	0-1-1	1	5	0	2	5
Coastal Carolina	02-20-10	14	1-2	0-0	1-2	0-1-1	1	1	0	0	3
Charleston So.	02-22-10	23	2-5	0-1	1-2	0-1-1	2	3	0	3	5
UNC Asheville	02-27-10	20	1-6	0-1	0-2	0-0-0	5	2	0	1	2
Presbyterian	03-01-10	15	1-5	0-0	4-4	0-0-0	0	2	0	3	6
Radford	03-05-10	21	0-4	0-0	1-2	0-1-1	2	3	0	4	1
High Point	03-08-10	14	0-4	0-0	1-3	2-0-2	0	1	0	1	1
Radford	03-12-10	20	3-6	0-1	0-0	1-1-2	0	0	0	0	6
High Point	03-13-10	20	5-7	1-1	2-5	1-2-3	0	2	0	0	13
Gardner-Webb	03-14-10	11	1-3	0-0	1-2	2-0-2	2	0	1	1	3

2009-10 Notes/Highlights

Career Stats

Season	GP	GS	Min	Avg	FG	FGA	Pct	3FG	3FGA	Pct	FT	FTA	Pct	ORB	DRB	TOT	Avg	Asst	TO	Blk	Stl	Pts	Avg
2009-10	32	0	520	16.3	46	124	.371	6	22	.273	34	54	.630	13	37	50	1.6	45	65	1	47	132	4.1



30

Brittany Campbell
6-0 R-Freshman Guard
Rustburg, Va.
Brookville HS

Career Highs

Points - 11
vs. Hartford (11-28-08)
FG Made - 4
vs. Hartford (11-28-08)
FG Attempts - 12
at James Madison (12-02-08)
3FG Made - 3
at James Madison (12-02-08)
3FG Attempts - 7
at James Madison (12-02-08)
FT Made - 3
vs. South Alabama (11-29-08)
FT Attempts - 3 (Two times)
Most recently, vs. S. Alabama (11-29-08)
Rebounds - 3 (Three times)
Most recently, at JMU (12-02-08)
Assists - 1
vs. Hartford (11-28-08)
Steals - 2
vs. South Alabama (11-29-08)
Blocks - 1
vs. South Alabama (11-29-08)

2009-10 Game-By-Game Statistics

OPPONENT	DATE	MIN	FG-FGA	3FG-FGA	FT-FTA	OFF-DEF-TOT	A	TO	BLK	STL	PTS
Winston-Salem St.	11-13-09										Did not play
UNC Greensboro	11-17-09										Did not play
Tulane	11-20-09										Did not play
Navy	11-21-09										Did not play
Lafayette	11-28-09										Did not play
James Madison	12-01-09										Did not play
Glenville St.	12-05-09										Did not play
Auburn	12-15-09										Did not play
Cornell	12-28-09										Did not play
Virginia	12-29-09										Did not play
Gardner-Webb	01-02-10										Did not play
N.C. A&T	01-05-10										Did not play
Winthrop	01-09-10										Did not play
Longwood	01-12-10										Did not play
Presbyterian	01-16-10										Did not play
UNC Asheville	01-18-10										Did not play
Charleston So.	01-23-10										Did not play
Coastal Carolina	01-25-10										Did not play
High Point	01-30-10										Did not play
Radford	02-01-10										Did not play
N.C. Central	02-04-10										Did not play
Gardner-Webb	02-08-10										Did not play
Winthrop	02-15-10										Did not play
Coastal Carolina	02-20-10										Did not play
Charleston So.	02-22-10										Did not play
UNC Asheville	02-27-10										Did not play
Presbyterian	03-01-10										Did not play
Radford	03-05-10										Did not play
High Point	03-08-10										Did not play
Radford	03-12-10										Did not play
High Point	03-13-10										Did not play
Gardner-Webb	03-14-10										Did not play

2009-10 Notes/Highlights

-- Has missed the first 32 games of the 2009-10 season, due to a knee injury.

Career Stats

Season	GP	GS	Min	Avg	FG	FGA	Pct	3FG	3FGA	Pct	FT	FTA	Pct	ORB	DRB	TOT	Avg	Asst	TO	Blk	Stl	Pts	Avg
2008-09	5	1	104	20.8	11	31	.355	6	18	.333	7	9	.778	5	6	11	2.2	1	6	1	4	35	7.0



32

Rachel McLeod
5-10 Junior Guard
Houston, Texas
Home Schooled

Season Highs

Points - 11

vs. Presbyterian (01-16-10)

FG Made - 4 (Two times)

Most recently, vs. G.-Webb (02-08-10)

FG Attempts - 8 (Two times)

Most recently, vs. NCCU (02-04-10)

3FG Made - 2

vs. UNC Asheville (01-18-10)

3FG Attempts - 3 (Three times)

Most recently, vs. UNCA (01-18-10)

FT Made - 5

at Radford (02-01-10)

FT Attempts - 6

at Radford (02-01-10)

Rebounds - 8

at Gardner-Webb (01-02-10)

Assists - 7

vs. Glenville State (12-05-09)

Steals - 4

vs. UNC Asheville (01-18-10)

Blocks - 1

vs. Longwood (01-12-10)

Career Highs

Points - 13

at Coastal Carolina (02-21-09)

FG Made - 4 (Six times)

Most recently, vs. G.-Webb (02-08-10)

FG Attempts - 13

at Old Dominion (03-23-08)

3FG Made - 2 (Four times)

Most recently, vs. UNCA (01-18-10)

3FG Attempts - 5

at Old Dominion (03-23-08)

FT Made - 5 (Two times)

Most recently, at Radford (02-01-10)

FT Attempts - 6 (Two times)

Most recently, at Radford (02-01-10)

Rebounds - 8 (Two times)

Most recently, at G.-Webb (01-02-10)

Assists - 8

vs. High Point (03-15-08)

Steals - 4 (Two times)

Most recently, vs. UNCA (01-18-10)

Blocks - 1 (Eight times)

Most recently, vs. Longwood (01-12-10)

2009-10 Game-By-Game Statistics

OPPONENT	DATE	MIN	FG-FGA	3FG-FGA	FT-FTA	OFF-DEF-TOT	A	TO	BLK	STL	PTS
Winston-Salem St.	11-13-09	25	3-5	0-1	2-2	1-0-1	2	0	0	2	8
UNC Greensboro	11-17-09	25	1-7	0-3	0-0	0-1-1	2	3	0	2	2
Tulane	11-20-09	23	3-4	0-0	3-5	0-2-2	2	2	0	0	9
Navy	11-21-09	18	3-4	0-0	0-2	1-1-2	0	1	0	0	6
Lafayette	11-28-09	18	1-4	0-0	2-2	0-1-1	0	1	0	1	4
James Madison	12-01-09	23	3-6	0-3	2-2	0-1-1	0	4	0	1	8
Glenville St.	12-05-09	18	2-6	0-0	2-4	1-1-2	7	2	0	2	6
Auburn	12-15-09	22	0-6	0-0	2-2	0-1-1	1	1	0	0	2
Cornell	12-28-09	17	1-2	1-1	0-0	0-0-0	0	2	0	0	3
Virginia	12-29-09	19	2-2	0-0	1-1	0-2-2	0	3	0	0	5
Gardner-Webb	01-02-10	32	2-4	0-0	2-2	2-6-8	2	4	0	0	6
N.C. A&T	01-05-10	25	1-8	0-0	2-2	2-0-2	1	0	0	1	4
Winthrop	01-09-10	20	2-3	0-0	0-0	1-2-3	2	0	0	1	4
Longwood	01-12-10	27	2-6	0-0	1-2	0-2-2	4	2	1	0	5
Presbyterian	01-16-10	20	4-6	1-1	2-2	1-2-3	1	0	0	2	11
UNC Asheville	01-18-10	23	3-7	2-3	2-2	1-4-5	3	0	0	4	10
Charleston So.	01-23-10	29	0-3	0-0	3-4	1-1-2	1	1	0	0	3
Coastal Carolina	01-25-10	30	1-5	0-0	0-0	2-1-3	2	2	0	1	2
High Point	01-30-10	32	0-3	0-1	2-2	1-0-1	2	3	0	0	2
Radford	02-01-10	21	2-4	0-0	5-6	0-1-1	2	1	0	1	9
N.C. Central	02-04-10	30	3-8	0-0	0-0	2-2-4	1	1	0	0	6
Gardner-Webb	02-08-10	33	4-7	1-2	0-0	2-0-2	3	2	0	2	9
Winthrop	02-15-10	28	1-4	0-2	1-2	2-2-4	1	1	0	3	3
Coastal Carolina	02-20-10	24	0-2	0-0	0-0	0-2-2	3	1	0	0	0
Charleston So.	02-22-10	27	2-4	0-0	0-0	1-1-2	1	0	0	1	4
UNC Asheville	02-27-10	19	0-4	0-0	2-2	1-0-1	4	0	0	2	2
Presbyterian	03-01-10	26	1-6	1-1	0-0	2-1-3	0	2	0	2	3
Radford	03-05-10	17	0-2	0-1	0-0	1-1-2	2	3	0	1	0
High Point	03-08-10	19	1-3	0-0	1-2	0-2-2	2	1	0	0	3
Radford	03-12-10	26	2-3	0-0	1-2	0-3-3	1	1	0	0	5
High Point	03-13-10	28	1-3	0-0	1-2	3-1-4	2	1	0	1	3
Gardner-Webb	03-14-10	33	3-4	0-1	0-0	0-4-4	1	4	0	1	6

2009-10 Notes/Highlights

-- Scored in double figures in back-to-back games for the first time in her career, Jan. 16 vs. Presbyterian and Jan. 18 vs. UNC Asheville.

Career Stats

Season	GP	GS	Min	Avg	FG	FGA	Pct	3FG	3FGA	Pct	FT	FTA	Pct	ORB	DRB	TOT	Avg	Asst	TO	Blk	Stl	Pts	Avg
2007-08	32	0	531	16.6	50	108	.463	12	33	.364	27	41	.659	10	46	56	1.8	66	60	4	25	139	4.3
2008-09	30	5	622	20.7	39	120	.325	9	34	.265	34	45	.756	11	60	71	2.4	73	82	3	29	121	4.0
2009-10	32	32	777	24.3	54	145	.372	6	20	.300	39	52	.750	28	48	76	2.4	55	49	1	31	153	4.8
TOTAL	94	37	1930	20.5	143	373	.383	27	87	.310	100	138	.725	49	154	203	2.2	194	191	8	85	413	4.4



40

Devon Brown

*5-10 R-Freshman G
Waynesboro, Va.
Waynesboro HS*

Season/Career Highs

Points - 29

at High Point (01-30-10)

FG Made - 12

at High Point (01-30-10)

FG Attempts - 18

vs. Gardner-Webb (02-08-10)

3FG Made - 3 (Five times)

Most recently, vs. High Point (03-08-10)

3FG Attempts - 6 (Four times)

Most recently, at High Point (03-13-10)

FT Made - 8 (Two times)

Most recently, at Radford (02-01-10)

FT Attempts - 9 (Three times)

Most recently, at Presby. (03-01-10)

Rebounds - 13 (Four times)

Most recently, vs. G.-Webb (02-08-10)

Assists - 4 (Two times)

Most recently, at CSU (01-23-10)

Steals - 5 (Two times)

Most recently, vs. Coastal (02-20-10)

Blocks - 2 (Five times)

Most recently, at High Point (03-13-10)

2009-10 Game-By-Game Statistics

OPPONENT	DATE	MIN	FG-FGA	3FG-FGA	FT-FTA	OFF-DEF-TOT	A	TO	BLK	STL	PTS
Winston-Salem St.	11-13-09	22	11-14	3-5	1-1	4-3-7	1	2	0	0	26
UNC Greensboro	11-17-09	30	11-15	1-2	3-7	4-5-9	2	3	0	3	26
Tulane	11-20-09	32	6-13	3-4	3-6	3-9-12	1	2	2	1	18
Navy	11-21-09	33	4-13	3-5	8-9	3-8-11	2	1	0	5	19
Lafayette	11-28-09	20	8-14	1-3	0-0	2-1-3	4	2	0	1	17
James Madison	12-01-09	34	1-16	0-3	7-8	4-9-13	0	6	0	1	9
Glenville St.	12-05-09	18	8-11	0-1	4-6	2-7-9	2	1	0	0	20
Auburn	12-15-09	37	7-9	2-3	3-3	0-8-8	0	3	1	0	19
Cornell	12-28-09	23	8-14	1-3	1-3	1-5-6	1	2	1	2	18
Virginia	12-29-09	25	4-13	1-6	0-0	1-5-6	0	4	2	3	9
Gardner-Webb	01-02-10	31	2-11	1-4	4-4	3-8-11	0	2	0	3	9
N.C. A&T	01-05-10	32	6-15	1-5	4-7	4-9-13	3	3	1	2	17
Winthrop	01-09-10	23	8-16	2-6	3-3	1-5-6	1	1	0	2	21
Longwood	01-12-10	30	5-17	0-4	6-6	6-7-13	3	4	2	3	16
Presbyterian	01-16-10	21	5-8	3-5	0-0	1-4-5	3	1	1	2	13
UNC Asheville	01-18-10	25	5-10	2-4	0-0	2-6-8	2	4	1	0	12
Charleston So.	01-23-10	32	4-7	1-3	2-5	2-4-6	4	4	0	3	11
Coastal Carolina	01-25-10	29	6-16	1-3	4-4	2-8-10	1	1	1	4	17
High Point	01-30-10	39	12-17	0-3	5-8	1-10-11	2	4	2	1	29
Radford	02-01-10	32	6-12	0-3	8-9	3-8-11	1	2	0	3	20
N.C. Central	02-04-10	27	4-6	2-4	0-0	2-4-6	0	1	0	0	10
Gardner-Webb	02-08-10	37	5-18	1-4	2-2	4-9-13	1	3	0	2	13
Winthrop	02-15-10	20	7-16	1-5	0-0	3-2-5	2	2	0	1	15
Coastal Carolina	02-20-10	31	6-14	0-2	2-5	3-3-6	1	2	0	5	14
Charleston So.	02-22-10	33	7-16	1-6	5-6	4-8-12	2	6	1	2	20
UNC Asheville	02-27-10	22	5-9	2-2	0-3	3-2-5	2	2	0	3	12
Presbyterian	03-01-10	24	4-8	0-1	7-9	2-3-5	0	0	0	3	15
Radford	03-05-10	16	5-7	0-2	0-0	1-5-6	0	3	0	0	10
High Point	03-08-10	24	8-10	3-4	4-6	4-5-9	1	1	0	0	23
Radford	03-12-10	24	7-11	2-4	7-7	2-6-8	1	1	0	1	23
High Point	03-13-10	26	5-16	1-6	6-7	2-5-7	1	1	2	3	17
Gardner-Webb	03-14-10	36	9-15	0-2	6-8	3-5-8	1	3	0	4	24

2009-10 Notes/Highlights

- Tabbed Big South Championship MVP, after scoring 21.3 ppg during Liberty's trio of victories and sinking the game-winning shot with 4.2 seconds left in the championship tilt.
- First team All-Big South honoree, becoming the first conference freshman to earn first team All-Big South distinction since the 1996-97 season.
- Two-time Big South Player of the Week (Nov. 24 and Feb. 2).
- Ranks in the top 10 of eight different Big South statistical categories, including scoring (1st-16.9 ppg), defensive rebounds (2nd-5.8 rpg), rebounding (T-2nd-8.4 rpg), field goal percentage (3rd-.489), free throw percentage (5th-.739), steals (5th-2.0 spg), offensive rebounds (7th-2.6 rpg) and three-point field goals made (1.2/game).
- Voted the Championship Game All-Star at the Navy Classic.
- Has posted nine double-doubles this season.
- Has scored in double figures in 21 consecutive games.
- Has grabbed five or more rebounds in 27 straight games.
- Her 268 rebounds are the most by any freshman in program history, and Brown is only the second Liberty freshman ever to post at least 500 points.

Career Stats

Season	GP	GS	Min	Avg	FG	FGA	Pct	3FG	3FGA	Pct	FT	FTA	Pct	ORB	DRB	TOT	Avg	Asst	TO	Blk	Stl	Pts	Avg
2009-10	32	32	888	27.8	199	407	.489	39	117	.333	105	142	.739	82	186	268	8.4	45	77	17	63	542	16.9



43

Kittery Maine

6-4 Junior Forward

Bonaire, Ga.

Warner Robins HS

Career Highs

Points - 12

vs. Saint Paul's (12-13-08)

FG Made - 5

vs. Saint Paul's (12-13-08)

FG Attempts - 8

vs. Saint Paul's (12-13-08)

3FG Made - 0

None

3FG Attempts - 0

None

FT Made - 3

vs. Charleston So. (02-18-08)

FT Attempts - 4

vs. Charleston So. (02-18-08)

Rebounds - 7

vs. Saint Paul's (12-13-08)

Assists - 1 (Six times)

Most recently, vs. Radford (02-02-09)

Steals - 1 (Five times)

Most recently, vs. Winthrop (02-16-09)

Blocks - 3 (Two times)

Most recently, at W. Carolina (11-22-08)

2009-10 Game-By-Game Statistics

OPPONENT	DATE	MIN	FG-FGA	3FG-FGA	FT-FTA	OFF-DEF-TOT	A	TO	BLK	STL	PTS
Winston-Salem St.	11-13-09										Did not play
UNC Greensboro	11-17-09										Did not play
Tulane	11-20-09										Did not play
Navy	11-21-09										Did not play
Lafayette	11-28-09										Did not play
James Madison	12-01-09										Did not play
Glenville St.	12-05-09										Did not play
Auburn	12-15-09										Did not play
Cornell	12-28-09										Did not play
Virginia	12-29-09										Did not play
Gardner-Webb	01-02-10										Did not play
N.C. A&T	01-05-10										Did not play
Winthrop	01-09-10										Did not play
Longwood	01-12-10										Did not play
Presbyterian	01-16-10										Did not play
UNC Asheville	01-18-10										Did not play
Charleston So.	01-23-10										Did not play
Coastal Carolina	01-25-10										Did not play
High Point	01-30-10										Did not play
Radford	02-01-10										Did not play
N.C. Central	02-04-10										Did not play
Gardner-Webb	02-08-10										Did not play
Winthrop	02-15-10										Did not play
Coastal Carolina	02-20-10										Did not play
Charleston So.	02-22-10										Did not play
UNC Asheville	02-27-10										Did not play
Presbyterian	03-01-10										Did not play
Radford	03-05-10										Did not play
High Point	03-08-10										Did not play
Radford	03-12-10										Did not play
High Point	03-13-10										Did not play
Gardner-Webb	03-14-10										Did not play

2009-10 Notes/Highlights

-- Has missed the first 32 games of the 2009-10 season, due to a knee injury.

Career Stats

Season	GP	GS	Min	Avg	FG	FGA	Pct	3FG	3FGA	Pct	FT	FTA	Pct	ORB	DRB	TOT	Avg	Asst	TO	Blk	Stl	Pts	Avg
2007-08	28	0	202	7.2	22	30	.733	0	0	.000	10	18	.556	13	28	41	1.5	3	18	6	3	54	1.9
2008-09	24	0	197	8.2	20	41	.488	0	0	.000	2	4	.500	17	30	47	2.0	3	12	7	2	42	1.8
TOTAL	52	0	399	7.7	42	71	.592	0	0	.000	12	22	.545	30	58	88	1.7	6	30	13	5	96	1.8



54

Carra Coy

*6-6 Freshman Forward
Summerville, S.C.
Northwood Academy*

Season/Career Highs

Points - 3 (Four times)

Most recently, at UNCA (02-27-10)

FG Made - 1 (Eight times)

Most recently, vs. Coastal (02-20-10)

FG Attempts - 4 (Two times)

at Winthrop (02-15-10)

3FG Made - 0

None

3FG Attempts - 0

None

FT Made - 3

at UNC Asheville (02-27-10)

FT Attempts - 4

at UNC Asheville (02-27-10)

Rebounds - 4 (Four times)

Most recently, at UNCA (02-27-10)

Assists - 1

vs. Coastal (02-20-10)

Steals - 1 (Two times)

Most recently, vs. NCCU (02-04-10)

Blocks - 2

vs. UNC Greensboro (11-17-09)

2009-10 Game-By-Game Statistics

OPPONENT	DATE	MIN	FG-FGA	3FG-FGA	FT-FTA	OFF-DEF-TOT	A	TO	BLK	STL	PTS
Winston-Salem St.	11-13-09	19	1-3	0-0	1-2	0-1-1	0	2	1	0	3
UNC Greensboro	11-17-09	14	1-2	0-0	0-0	1-3-4	0	0	2	0	2
Tulane	11-20-09					Did not play					
Navy	11-21-09					Did not play					
Lafayette	11-28-09	17	1-1	0-0	0-0	0-1-1	0	1	0	1	2
James Madison	12-01-09	7	0-0	0-0	0-0	1-0-1	0	1	0	0	0
Glenville St.	12-05-09	15	0-1	0-0	2-2	1-3-4	0	3	1	0	2
Auburn	12-15-09					Did not play					
Cornell	12-28-09	15	1-2	0-0	1-2	0-2-2	0	1	1	0	3
Virginia	12-29-09					Did not play					
Gardner-Webb	01-02-10	5	0-0	0-0	0-0	0-1-1	0	1	0	0	0
N.C. A&T	01-05-10	4	1-1	0-0	0-0	0-0-0	0	0	0	0	2
Winthrop	01-09-10	9	0-4	0-0	0-0	2-1-3	0	0	1	0	0
Longwood	01-12-10	5	0-0	0-0	0-1	1-0-1	0	0	0	0	0
Presbyterian	01-16-10	15	0-1	0-0	0-1	1-1-2	0	1	1	0	0
UNC Asheville	01-18-10	10	1-1	0-0	0-0	1-0-1	0	1	1	0	2
Charleston So.	01-23-10	4	0-0	0-0	0-0	0-1-1	0	1	0	0	0
Coastal Carolina	01-25-10					Did not play					
High Point	01-30-10	1	0-0	0-0	0-0	0-0-0	0	0	0	0	0
Radford	02-01-10	6	0-0	0-0	0-2	1-0-1	0	0	0	0	0
N.C. Central	02-04-10	6	0-1	0-0	0-0	0-0-0	0	0	0	1	0
Gardner-Webb	02-08-10					Did not play					
Winthrop	02-15-10	14	1-4	0-0	0-0	3-1-4	0	0	0	0	2
Coastal Carolina	02-20-10	8	1-1	0-0	1-2	3-0-3	1	1	0	0	3
Charleston So.	02-22-10	2	0-0	0-0	0-0	0-0-0	0	0	0	0	0
UNC Asheville	02-27-10	17	0-2	0-0	3-4	3-1-4	0	0	0	0	3
Presbyterian	03-01-10	6	0-1	0-0	1-2	1-1-2	0	0	0	0	1
Radford	03-05-10	11	0-0	0-0	0-0	0-1-1	0	1	0	0	0
High Point	03-08-10	5	0-0	0-0	0-0	0-1-1	0	0	0	0	0
Radford	03-12-10	10	0-0	0-0	0-0	1-0-1	0	0	0	0	0
High Point	03-13-10	2	0-0	0-0	0-2	0-1-1	0	0	1	0	0
Gardner-Webb						Did not play					

2009-10 Notes/Highlights

Career Stats

Season	GP	GS	Min	Avg	FG	FGA	Pct	3FG	3FGA	Pct	FT	FTA	Pct	ORB	DRB	TOT	Avg	Asst	TO	Blk	Stl	Pts	Avg
2009-10	25	0	227	9.1	8	25	.320	0	0	.000	9	20	.450	20	20	40	1.6	1	14	9	2	25	1.0

[Contact Us](#)

Liberty (27-5)
Women's Basketball National Ranking Summary
Thru Games 03/14/2010

[Back to team selections](#)
[Big South - All Teams](#)

Category	Rank	Actual	National Leader	Actual
Scoring Offense (332 ranked)	96	66.8	Oral Roberts	86.1
Scoring Defense (332 ranked)	2	48.9	Connecticut	46.8
Scoring Margin (332 ranked)	6	17.9	Connecticut	34.8
Field-Goal Percentage (332 ranked)	3	48.1	Connecticut	51.6
Field-Goal Percentage Defense (332 ranked)	14	34.9	Connecticut	30.5
Free-Throw Percentage (332 ranked)	283	64.2	Drexel	80.7
Rebound Margin (332 ranked)	1	14.0	Liberty	14.0
Three-Point Field Goals Per Game (332 ranked)	327	2.6	Morehead St.	10.3
Three-Point Field-Goal Percentage (265 ranked)			Ohio St.	39.6
Won-Lost Percentage (332 ranked)	14	84.4	Connecticut	100.0
Assists Per Game (332 ranked)	171	12.5	Connecticut	19.7
Blocked Shots Per Game (332 ranked)	239	2.5	Baylor	7.3
Steals Per Game (332 ranked)	12	11.5	Oral Roberts	15.8
Turnovers Per Game (332 ranked)	260	19.6	UALR	12.3
Personal Fouls Per Game (332 ranked)	163	17.2	Connecticut	12.4
Assist Turnover Ratio (332 ranked)	225	0.64	Connecticut	1.34
Turnover Margin (332 ranked)	106	1.28	Georgetown	8.32
Three Pt FG Defense (332 ranked)	11	27.6	Savannah St.	24.1

Category	Player	Rank	Actual	National Leader	Actual
Points Per Game (250 ranked)	Devon Brown	68	16.9	Alysha Clark, MidTen	28.7
Rebounds Per Game (250 ranked)	Avery Warley	81	8.4	Judie Lomax, Clmbia	14.2
	Devon Brown	81	8.4		
Assists Per Game (250 ranked)	Amber Mays	144	3.8	Courtney Vandersloot, Gonzga	9.3
Blocked Shots Per Game (250 ranked)				Louella Tomlinson, StMary	6.3
Steals Per Game (250 ranked)	Amber Mays	82	2.3	Kevi Luper, ORobt	4.5
	Devon Brown	177	2.0		
Field-Goal Percentage (250 ranked)	Devon Brown	56	48.9	Carolyn Swords, BC	66.4
Free-Throw Percentage (250 ranked)	Devon Brown	232	73.9	Kelsey Luna, Ind.St	93.3
Three-Point Field-Goal Percentage (250 ranked)				Brigid Mulroy, Dtroit	50.5
Three-Point Field Goals Per Game (250 ranked)				Chynna Bozeman, Morehd	3.7
Double Doubles (30 ranked)				Shanavia Dowdell, LaTech	21.0
				Saadia Doyle, Howard	21.0
				Siarre Evans, E.Tenn	21.0
Triple Doubles (30 ranked)				Brittney Griner, Baylor	3.0
Double Doubles (30 ranked)				Judie Lomax, Clmbia	21.0
				Pauline Love, S.Miss	21.0
Assist Turnover Ratio (250 ranked)	Amber Mays	176	1.16	Asriel Rolfe, Ark-LR	3.3
Triple Doubles (30 ranked)				Louella Tomlinson, StMary	3.0



Official Basketball Box Score -- Game Totals -- Final Statistics
Liberty vs Gardner-Webb
03-14-10 2:00 p.m. at Millis Center (High Point, N.C.)



Liberty 68 • 27-5, 14-2 BSC

#	Player	f	Total			3-Ptr			Rebounds			PF	TP	A	TO	Blk	Stl	Min
			FG-FGA	FG-FGA	FT-FTA	FG-FGA	FG-FGA	FT-FTA	Off	Def	Tot							
15	BEECHER, Kylee	f	4-4	0-0	1-1	0	1	1	4	9	0	4	0	4	0	2	19	
40	BROWN, Devon	f	9-15	0-2	6-8	3	5	8	1	24	1	3	0	4	0	4	36	
23	WARLEY, Avery	c	3-6	0-0	0-0	4	5	9	3	6	0	2	1	0	0	29		
21	MAYS, Amber	g	3-6	0-0	2-4	0	3	3	5	8	3	8	0	3	0	31		
32	McLEOD, Rachel	g	3-4	0-1	0-0	0	4	4	3	6	1	4	0	1	0	33		
01	WASHINGTON, LaKendra		0-0	0-0	0-0	0	0	0	0	0	0	1	0	0	0	4		
11	ANTIC, Jelena		4-8	1-3	0-0	2	1	3	2	9	2	2	0	1	0	27		
12	DALE, Danika		1-1	0-0	1-1	0	0	0	1	3	0	2	0	1	0	10		
25	MORGAN, Dymond		1-3	0-0	1-2	2	0	2	3	3	2	0	1	1	0	11		
Team						0	0	0										
Totals			28-47	1-6	11-16	11	19	30	22	68	9	26	2	13	2	13	200	

FG % 1st Half: 14-23 60.9% 2nd half: 14-24 58.3% Game: 28-47 59.6% Deadball Rebounds 3
 3FG % 1st Half: 1-2 50.0% 2nd half: 0-4 0.0% Game: 1-6 16.7%
 FT % 1st Half: 9-13 69.2% 2nd half: 2-3 66.7% Game: 11-16 68.8%

Gardner-Webb 66 • 28-4, 15-1 BSC

#	Player	f	Total			3-Ptr			Rebounds			PF	TP	A	TO	Blk	Stl	Min
			FG-FGA	FG-FGA	FT-FTA	FG-FGA	FG-FGA	FT-FTA	Off	Def	Tot							
11	VAITKUTE, Sandra	f	2-2	0-0	0-1	2	2	4	2	4	1	2	0	1	0	1	13	
23	POPE, LaTroya	f	2-3	0-1	0-0	1	3	4	2	4	1	1	0	3	0	3	31	
24	ROUNDTREE, Margaret	c	6-16	0-0	1-2	4	3	7	2	13	2	3	1	1	0	4	40	
12	HUDSON, Dominique	g	3-8	1-4	10-11	2	0	2	4	17	3	2	0	4	0	4	31	
32	EPPS, Courtney	g	4-11	1-6	2-2	5	1	6	3	11	1	2	1	1	0	34		
04	BURNETT, Meranda		0-0	0-0	2-2	0	0	0	1	2	0	0	0	0	0	7		
05	DILLARD, Brianna		0-2	0-0	2-2	1	1	2	2	2	1	2	0	0	0	12		
15	HUDSON, Monique		5-15	2-7	1-1	0	0	0	4	13	4	6	0	1	0	32		
Team						4	0	4										
Totals			22-57	4-18	18-21	19	10	29	20	66	13	18	2	11	2	11	200	

FG % 1st Half: 7-29 24.1% 2nd half: 15-28 53.6% Game: 22-57 38.6% Deadball Rebounds 0
 3FG % 1st Half: 0-6 0.0% 2nd half: 4-12 33.3% Game: 4-18 22.2%
 FT % 1st Half: 10-11 90.9% 2nd half: 8-10 80.0% Game: 18-21 85.7%

Officials: Joe Cunningham, Dan Outlaw, Jennifer Rezac
 Technical fouls: Liberty-None. Gardner-Webb-EPPS, Courtney.
 Attendance: 698
 Fouled out: LU #21 (1:58, 2nd half)
 LU wins Big South Conference Tournament, advances to NCAA Tournament

Score by periods	1st	2nd	Total
Liberty	38	30	68
Gardner-Webb	24	42	66

	In Paint	Off T/O	2nd Chance	Fast Break	Bench
Points LIBERTY	44	21	16	10	15
GWU	28	24	21	4	17

Last FG - LIBERTY 2nd-00:05, GWU 2nd-00:12.
 Largest lead - LIBERTY by 20 2nd-11:49, GWU by 2 2nd-02:32.

Score tied - 5 times.
 Lead changed - 4 times.



2009-10 Liberty Women's Basketball
Liberty Combined Team Statistics (as of Mar 16, 2010)
Big South Tourney



RECORD:	OVERALL	HOME	AWAY	NEUTRAL
ALL GAMES	3-0	0-0	1-0	2-0
CONFERENCE	0-0	0-0	0-0	0-0
NON-CONFERENCE	3-0	0-0	1-0	2-0

#	Player	gp-gs	min	avg	Total		3-Point		F-Throw		Rebounds				pf	dq	a	to	blk	stl	pts	avg
					fg-fga	fg%	3fg-fga	3fg%	ft-fa	ft%	off	def	tot	avg								
40	BROWN, Devon	3-3	86	28.7	21-42	.500	3-12	.250	19-22	.864	7	16	23	7.7	4	0	3	5	2	8	64	21.3
21	MAYS, Amber	3-3	78	26.0	13-19	.684	1-1	1.000	8-13	.615	0	9	9	3.0	7	1	8	13	1	8	35	11.7
11	ANTIC, Jelena	3-0	69	23.0	9-21	.429	2-4	.500	3-4	.750	7	7	14	4.7	6	0	2	4	0	2	23	7.7
25	MORGAN, Dymond	3-0	51	17.0	9-16	.563	1-2	.500	3-7	.429	4	3	7	2.3	7	0	2	2	1	1	22	7.3
23	WARLEY, Avery	3-3	64	21.3	8-13	.615	0-0	.000	3-4	.750	5	11	16	5.3	11	0	0	5	2	0	19	6.3
15	BEECHER, Kylee	3-3	75	25.0	6-10	.600	0-0	.000	3-5	.600	5	9	14	4.7	11	0	4	6	0	4	15	5.0
12	DALE, Danika	3-0	44	14.7	5-12	.417	0-0	.000	5-11	.455	1	5	6	2.0	4	0	2	5	1	4	15	5.0
32	McLEOD, Rachel	3-3	87	29.0	6-10	.600	0-1	.000	2-4	.500	3	8	11	3.7	3	0	4	6	0	2	14	4.7
01	WASHINGTON, LaKen	3-0	34	11.3	2-8	.250	0-1	.000	0-2	.000	1	2	3	1.0	2	0	1	3	0	2	4	1.3
54	COY, Carra	2-0	12	6.0	0-0	.000	0-0	.000	0-2	.000	1	1	2	1.0	0	0	0	0	1	0	0	0.0
Team											2	1	3				2					
Total.....		3	600		79-151	.523	7-21	.333	46-74	.622	36	72	108	36.0	55	1	26	51	8	31	211	70.3
Opponents.....		3	600		63-159	.396	11-41	.268	36-52	.692	36	53	89	29.7	61	-	33	49	2	20	173	57.7

TEAM STATISTICS	LIBERTY	OPP	Date	Opponent	Score	Att.
SCORING	211	173	& 03-12-10	vs Radford	w 70-52	602
Points per game	70.3	57.7	& 03-13-10	at High Point	w 73-55	752
Scoring margin	+12.7	-	& 03-14-10	vs Gardner-Webb	w 68-66	698
FIELD GOALS-ATT	79-151	63-159	% = Navy Classic (Annapolis, Md.)			
Field goal pct	.523	.396	# = Marriott Cavalier Classic (Charlottesville, Va.)			
3 POINT FG-ATT	7-21	11-41	& = Advance Auto Parts Big South Championship (High Point, N.C.)			
3-point FG pct	.333	.268	* = Big South Conference game			
3-pt FG made per game	2.3	3.7				
FREE THROWS-ATT	46-74	36-52				
Free throw pct	.622	.692				
F-Throws made per game	15.3	12.0				
REBOUNDS	108	89				
Rebounds per game	36.0	29.7				
Rebounding margin	+6.3	-				
ASSISTS	26	33				
Assists per game	8.7	11.0				
TURNOVERS	51	49				
Turnovers per game	17.0	16.3				
Turnover margin	-0.7	-				
Assist/turnover ratio	0.5	0.7				
STEALS	31	20				
Steals per game	10.3	6.7				
BLOCKS	8	2				
Blocks per game	2.7	0.7				
ATTENDANCE	0	2052				
Home games-Avg/Game	0-0	1-752				
Neutral site-Avg/Game	-	2-650				

Score by Periods	1st	2nd	Totals
Liberty	104	107	211
Opponents	77	96	173



Official Basketball Box Score -- Game Totals -- Final Statistics
Liberty vs Louisville
03-22-09 8:30 p.m. at Baton Rouge, La. (Maravich Center)



Liberty 42 • 24-9

#	Player	f	Total			3-Ptr			Rebounds			PF	TP	A	TO	Blk	Stl	Min
			FG-FGA	FG-FGA	FT-FTA	FG-FGA	FG-FGA	FT-FTA	Off	Def	Tot							
23	WARLEY, Avery	f	2-2	0-0	0-1	0-0	0-0	2	7	9	3	4	0	3	1	2	34	
42	FRAZEE, Moriah	f	0-3	0-0	1-3	0-0	0-0	1	2	3	1	1	2	3	1	1	27	
21	MAYS, Amber	g	3-8	1-2	4-6	1-2	1-2	0	0	0	2	11	5	4	0	2	37	
22	HAMMOND, Rachel	g	2-8	1-4	0-0	1-4	1-4	0	3	3	1	5	1	8	0	1	20	
40	FRAZEE, Megan	g	3-14	0-3	2-2	0-3	0-3	1	7	8	4	8	0	4	1	3	34	
12	DALE, Danika		0-0	0-0	0-0	0-0	0-0	0	0	0	0	0	0	0	0	0	3	
15	BEECHER, Kylee		2-3	0-0	0-0	0-0	0-0	0	1	1	3	4	0	0	0	0	12	
25	LIGHTFOOT, Rebecca		2-4	2-2	0-0	2-2	2-2	1	0	1	1	6	0	0	0	0	14	
32	McLEOD, Rachel		1-2	1-1	0-0	1-1	1-1	0	1	1	0	3	2	5	0	1	17	
43	MAINE, Kittery		0-0	0-0	0-0	0-0	0-0	0	1	1	0	0	0	0	0	0	2	
Team								1	2	3								
Totals			15-44	5-12	7-12	5-12	5-12	6	24	30	15	42	10	27	3	10	200	

FG % 1st Half: 7-23 30.4% 2nd half: 8-21 38.1% Game: 15-44 34.1% Deadball Rebounds 2
 3FG % 1st Half: 1-5 20.0% 2nd half: 4-7 57.1% Game: 5-12 41.7%
 FT % 1st Half: 2-4 50.0% 2nd half: 5-8 62.5% Game: 7-12 58.3%

Louisville 62 • 30-4

#	Player	f	Total			3-Ptr			Rebounds			PF	TP	A	TO	Blk	Stl	Min
			FG-FGA	FG-FGA	FT-FTA	FG-FGA	FG-FGA	FT-FTA	Off	Def	Tot							
04	RUCKER, Gwen	f	0-0	0-0	0-0	0-0	0-0	1	0	1	0	0	0	1	0	2	8	
13	BINGHAM, Candyce	f	5-10	0-1	2-2	0-1	0-1	0	4	4	2	12	3	1	0	4	26	
35	McCOUGHTRY, Angel	f	5-14	1-4	1-2	1-4	1-2	1	5	6	3	12	1	1	2	4	25	
15	STEPHEN, Tiera	g	1-1	0-0	2-2	0-0	0-0	0	1	1	2	4	3	1	0	1	15	
50	BYRD, Deseree'	g	2-3	1-1	0-0	1-1	0-0	1	0	1	2	5	4	3	0	1	25	
11	BURKE, Becky		3-8	2-6	3-4	2-6	3-4	1	3	4	1	11	2	2	0	1	30	
14	HOWARD, Janae		2-6	2-3	0-2	2-3	0-2	0	3	3	1	6	0	1	0	0	12	
23	JACKSON, Mary		0-1	0-0	0-0	0-0	0-0	0	1	1	1	0	0	2	0	0	11	
24	TERRY, Laura		0-1	0-0	0-0	0-0	0-0	0	0	0	3	0	0	2	0	0	9	
33	REID, Monique		1-3	0-0	2-5	0-0	2-5	1	1	2	1	4	1	2	0	2	18	
45	HINES, Keshia		4-7	0-0	0-0	0-0	0-0	2	4	6	1	8	2	3	0	1	21	
Team								4	4	8								
Totals			23-54	6-15	10-17	6-15	6-15	11	26	37	17	62	16	19	2	16	200	

FG % 1st Half: 13-30 43.3% 2nd half: 10-24 41.7% Game: 23-54 42.6% Deadball Rebounds 3
 3FG % 1st Half: 4-10 40.0% 2nd half: 2-5 40.0% Game: 6-15 40.0%
 FT % 1st Half: 5-7 71.4% 2nd half: 5-10 50.0% Game: 10-17 58.8%

Officials: Dennis DeMayo, Joe Vaszily, Karen Preato
 Technical fouls: Liberty-None. Louisville-None.
 Attendance: 3610
 NCAA Raleigh Regional - 1st Round

Score by periods	1st	2nd	Total
Liberty	17	25	42
Louisville	35	27	62

	In Paint	Off T/O	2nd Chance	Fast Break	Bench
Points LIBERTY	18	15	2	0	13
UL	24	29	4	0	29

Last FG - LIBERTY 2nd-04:05, UL 2nd-07:04.
 Largest lead - LIBERTY by 3 1st-18:34, UL by 31 2nd-11:17.

Score tied - 0 times.
 Lead changed - 1 time.



2009-10 Liberty Women's Basketball
Liberty Game-by-Game Highs (as of Mar 16, 2010)
All games



Opponent	Date	Score	Points	Rebounds	Assists	Steals	Blocked shots
WINSTON-SALEM STATE	11-13-09	71-26	26-BROWN, Devon	9-WARLEY, Avery	6-MAYS, Amber	5-WASHINGTON, La	2-DALE, Danika
UNC GREENSBORO	11-17-09	60-42	26-BROWN, Devon	9-BROWN, Devon	4-MAYS, Amber	4-MAYS, Amber	2-COY, Carra DALE, Danika
vs Tulane	11-20-09	63-52	18-BROWN, Devon	12-BROWN, Devon	3-MAYS, Amber	4-MAYS, Amber	2-BROWN, Devon
at Navy	11-21-09	55-43	19-BROWN, Devon	11-BROWN, Devon	5-MAYS, Amber	5-BROWN, Devon	None
at Lafayette	11-28-09	90-55	21-WASHINGTON, La	11-WARLEY, Avery	4-BROWN, Devon MAYS, Amber	4-WASHINGTON, La MAYS, Amber	1-BEECHER, Kylee
JAMES MADISON	12-01-09	50-60	14-MAYS, Amber	13-BROWN, Devon	2-MAYS, Amber WARLEY, Avery	2-BEECHER, Kylee	2-DALE, Danika
GLENVILLE STATE	12-05-09	86-45	20-BROWN, Devon	10-ANTIC, Jelena	7-McLEOD, Rachel MORGAN, Dymond	3-DALE, Danika	1-WARLEY, Avery COY, Carra
at Auburn	12-15-09	64-70	19-BROWN, Devon	8-BROWN, Devon	3-MAYS, Amber	4-MAYS, Amber	1-BROWN, Devon
vs Cornell	12-28-09	70-40	18-BROWN, Devon	8-ANTIC, Jelena	8-MAYS, Amber	4-MAYS, Amber	1-COY, Carra WARLEY, Avery BROWN, Devon WASHINGTON, LaK
at Virginia	12-29-09	54-63	12-WARLEY, Avery	8-WARLEY, Avery	3-ANTIC, Jelena MAYS, Amber	3-BROWN, Devon MAYS, Amber	2-BROWN, Devon
at Gardner-Webb	01-02-10	65-70	10-DALE, Danika ANTIC, Jelena MAYS, Amber WARLEY, Avery	11-BROWN, Devon	6-MAYS, Amber	3-BROWN, Devon WARLEY, Avery	1-WARLEY, Avery
NORTH CAROLINA A&T	01-05-10	57-51	17-BROWN, Devon	13-BROWN, Devon	4-ANTIC, Jelena	3-MORGAN, Dymond	1-BEECHER, Kylee BROWN, Devon ANTIC, Jelena
WINTHROP	01-09-10	67-38	21-BROWN, Devon	6-BROWN, Devon ANTIC, Jelena	10-MAYS, Amber	3-WASHINGTON, La	1-WARLEY, Avery BEECHER, Kylee COY, Carra
LONGWOOD	01-12-10	78-55	19-ANTIC, Jelena	13-BROWN, Devon	4-McLEOD, Rachel	5-MAYS, Amber	2-BROWN, Devon
PRESBYTERIAN COLLEGE	01-16-10	73-27	14-ANTIC, Jelena	5-BROWN, Devon DALE, Danika	6-MAYS, Amber	5-MORGAN, Dymond	1-BROWN, Devon COY, Carra
UNC ASHEVILLE	01-18-10	82-40	14-BEECHER, Kylee MAYS, Amber	10-WARLEY, Avery	6-MORGAN, Dymond	4-WASHINGTON, La McLEOD, Rachel MORGAN, Dymond	3-WARLEY, Avery
at Charleston Southern	01-23-10	65-52	18-WARLEY, Avery	16-WARLEY, Avery	4-BROWN, Devon	3-BROWN, Devon	1-MAYS, Amber
at Coastal Carolina	01-25-10	57-38	17-BROWN, Devon	12-WARLEY, Avery	2-McLEOD, Rachel MAYS, Amber DALE, Danika	4-BROWN, Devon	1-WARLEY, Avery BROWN, Devon DALE, Danika
at High Point	01-30-10	75-62	29-BROWN, Devon	14-WARLEY, Avery	2-MAYS, Amber BEECHER, Kylee McLEOD, Rachel BROWN, Devon	3-MORGAN, Dymond	2-BROWN, Devon
at Radford	02-01-10	63-45	20-BROWN, Devon	11-BROWN, Devon	7-MAYS, Amber	3-BROWN, Devon MAYS, Amber BEECHER, Kylee MORGAN, Dymond	2-WARLEY, Avery DALE, Danika
N.C. CENTRAL	02-04-10	64-44	16-WARLEY, Avery	11-WARLEY, Avery	8-MAYS, Amber	3-WASHINGTON, La	1-WASHINGTON, La WARLEY, Avery DALE, Danika
GARDNER-WEBB	02-08-10	56-59	15-WARLEY, Avery	13-BROWN, Devon	3-MAYS, Amber McLEOD, Rachel	2-McLEOD, Rachel BROWN, Devon MAYS, Amber	2-WARLEY, Avery
at Winthrop	02-15-10	52-18	15-BROWN, Devon	8-WARLEY, Avery	2-BROWN, Devon	3-WASHINGTON, La	3-WARLEY, Avery



2009-10 Liberty Women's Basketball
 Liberty Game-by-Game Highs (as of Mar 16, 2010)
 All games



Opponent	Date	Score	Points	Rebounds	Assists	Steals	Blocked shots
COASTAL CAROLINA	02-20-10	57-55	14-BROWN, Devon	8-WARLEY, Avery	3-McLEOD, Rachel	5-BROWN, Devon	1-WARLEY, Avery
CHARLESTON SOUTHERN	02-22-10	66-56	22-WARLEY, Avery	12-BROWN, Devon	3-ANTIC, Jelena	3-WARLEY, Avery	1-BROWN, Devon
at UNC Asheville	02-27-10	94-66	22-WARLEY, Avery	10-WARLEY, Avery	5-MORGAN, Dymond	MORGAN, Dymond 3-WASHINGTON, La	None
at Presbyterian College	03-01-10	55-40	15-BROWN, Devon	11-WARLEY, Avery	3-ANTIC, Jelena	MAYS, Amber BROWN, Devon 3-MORGAN, Dymond	1-WARLEY, Avery
RADFORD	03-05-10	66-33	17-WARLEY, Avery	12-WARLEY, Avery	2-MAYS, Amber McLEOD, Rachel DALE, Danika ANTIC, Jelena MORGAN, Dymond	5-DALE, Danika	1-ANTIC, Jelena WARLEY, Avery
HIGH POINT	03-08-10	73-48	23-BROWN, Devon	9-BROWN, Devon	5-MAYS, Amber	2-WASHINGTON, La MAYS, Amber WARLEY, Avery	3-WARLEY, Avery
vs Radford	03-12-10	70-52	23-BROWN, Devon	8-BROWN, Devon	3-BEECHER, Kylee	2-DALE, Danika	1-DALE, Danika
at High Point	03-13-10	73-55	21-MAYS, Amber	7-BROWN, Devon BEECHER, Kylee ANTIC, Jelena	3-MAYS, Amber	4-MAYS, Amber	2-BROWN, Devon
vs Gardner-Webb	03-14-10	68-66	24-BROWN, Devon	9-WARLEY, Avery	3-MAYS, Amber	4-BROWN, Devon	1-WARLEY, Avery MORGAN, Dymond



2009-10 Liberty Women's Basketball
Liberty Points-Rebounds-Assists (as of Mar 16, 2010)
All games



Opponent	Date	Score		01	11	12	15	21	23	25
				WASHINGTON	ANTIC,JELE	DALE,DANIK	BEECHER,KY	MAYS,AMBER	WARLEY,AVE	MORGAN,DYM
WINSTON-SALEM STATE	11-13-09	71-26	w	9-2-1	DNP	6-7-3	8-2-2	7-0-6	4-9-2	0-4-1
UNC GREENSBORO	11-17-09	60-42	w	2-0-0	DNP	0-4-0	11-5-0	11-1-4	0-7-0	6-5-2
vs Tulane	11-20-09	63-52	w	2-1-0	DNP	0-1-1	6-3-2	10-2-3	9-11-1	9-2-0
at Navy	11-21-09	55-43	w	6-4-0	0-5-3	0-2-1	4-2-0	8-2-5	10-6-0	2-3-0
at Lafayette	11-28-09	90-55	w	21-0-2	4-4-2	6-4-1	5-3-2	11-4-4	19-11-0	1-0-0
JAMES MADISON	12-01-09	50-60	L	2-1-0	1-4-0	3-5-1	4-6-1	14-2-2	9-7-2	0-0-0
GLENVILLE STATE	12-05-09	86-45	w	8-5-2	12-10-0	6-9-3	14-6-0	5-2-4	7-6-0	6-7-7
at Auburn	12-15-09	64-70	L	2-1-0	4-3-1	0-0-0	7-0-1	18-1-3	10-6-0	2-2-0
vs Cornell	12-28-09	70-40	w	9-5-2	11-8-2	5-7-2	5-3-0	4-2-8	10-7-0	2-1-1
at Virginia	12-29-09	54-63	L	5-5-1	5-3-3	3-4-0	6-2-0	7-0-3	12-8-0	2-1-0
at Gardner-Webb	01-02-10	65-70	L	0-0-0	10-5-1	10-0-1	4-3-0	10-5-6	10-6-0	6-1-1
NORTH CAROLINA A&T	01-05-10	57-51	w	0-2-0	14-4-4	2-2-1	0-3-0	4-2-3	9-11-0	5-0-1
WINTHROP	01-09-10	67-38	w	5-1-1	9-6-1	4-5-3	5-2-2	3-0-10	5-5-1	11-1-1
LONGWOOD	01-12-10	78-55	w	1-2-1	19-10-2	2-4-1	10-6-1	7-0-3	12-5-1	6-3-3
PRESBYTERIAN COLLEGE	01-16-10	73-27	w	6-3-0	14-3-1	5-5-1	5-3-1	8-2-6	6-2-0	5-0-4
UNC ASHEVILLE	01-18-10	82-40	w	6-1-0	7-4-0	5-3-1	14-5-2	14-1-5	6-10-2	6-2-6
at Charleston Southern	01-23-10	65-52	w	4-1-0	DNP	3-4-2	10-9-0	14-0-3	18-16-0	2-1-0
at Coastal Carolina	01-25-10	57-38	w	7-1-0	DNP	0-4-2	6-9-1	8-2-2	15-12-0	2-0-1
at High Point	01-30-10	75-62	w	0-0-0	DNP	2-2-0	3-4-2	7-5-2	26-14-0	6-0-1
at Radford	02-01-10	63-45	w	0-0-1	DNP	2-1-0	13-9-0	10-1-7	4-5-0	5-3-1
N.C. CENTRAL	02-04-10	64-44	w	6-2-2	DNP	15-3-2	3-2-4	8-2-8	16-11-0	0-1-1
GARDNER-WEBB	02-08-10	56-59	L	0-0-1	DNP	6-0-0	4-4-2	6-1-3	15-10-0	3-0-1
at Winthrop	02-15-10	52-18	w	2-2-1	DNP	11-5-0	9-5-1	1-1-1	4-8-1	5-1-1
COASTAL CAROLINA	02-20-10	57-55	w	4-1-0	2-3-1	5-0-0	9-1-0	12-3-2	5-8-1	3-1-1
CHARLESTON SOUTHERN	02-22-10	66-56	w	0-1-0	4-6-3	1-0-0	4-2-1	6-0-0	22-10-1	5-1-2
at UNC Asheville	02-27-10	94-66	w	12-0-4	13-5-2	10-4-3	12-9-0	6-2-2	22-10-0	2-0-5
at Presbyterian College	03-01-10	55-40	w	2-2-0	6-3-3	2-3-0	2-3-0	5-1-1	13-11-0	6-0-0
RADFORD	03-05-10	66-33	w	14-1-1	12-8-2	4-4-2	4-2-1	4-2-2	17-12-0	1-1-2
HIGH POINT	03-08-10	73-48	w	2-0-1	13-2-1	4-7-1	4-3-1	10-0-5	13-8-1	1-2-0
vs Radford	03-12-10	70-52	w	2-3-0	7-4-0	10-4-2	2-6-3	6-3-2	9-3-0	6-2-0
at High Point	03-13-10	73-55	w	2-0-1	7-7-0	2-2-0	4-7-1	21-3-3	4-4-0	13-3-0
vs Gardner-Webb	03-14-10	68-66	w	0-0-0	9-3-2	3-0-0	9-1-0	8-3-3	6-9-0	3-2-2

Opponent	Date	Score		32	40	54
				MCLEOD,RAC	BROWN,DEVO	COY,CARRA
WINSTON-SALEM STATE	11-13-09	71-26	w	8-1-2	26-7-1	3-1-0
UNC GREENSBORO	11-17-09	60-42	w	2-1-2	26-9-2	2-4-0
vs Tulane	11-20-09	63-52	w	9-2-2	18-12-1	DNP
at Navy	11-21-09	55-43	w	6-2-0	19-11-2	DNP
at Lafayette	11-28-09	90-55	w	4-1-0	17-3-4	2-1-0
JAMES MADISON	12-01-09	50-60	L	8-1-0	9-13-0	0-1-0
GLENVILLE STATE	12-05-09	86-45	w	6-2-7	20-9-2	2-4-0
at Auburn	12-15-09	64-70	L	2-1-1	19-8-0	DNP
vs Cornell	12-28-09	70-40	w	3-0-0	18-6-1	3-2-0
at Virginia	12-29-09	54-63	L	5-2-0	9-6-0	DNP
at Gardner-Webb	01-02-10	65-70	L	6-8-2	9-11-0	0-1-0
NORTH CAROLINA A&T	01-05-10	57-51	w	4-2-1	17-13-3	2-0-0
WINTHROP	01-09-10	67-38	w	4-3-2	21-6-1	0-3-0
LONGWOOD	01-12-10	78-55	w	5-2-4	16-13-3	0-1-0
PRESBYTERIAN COLLEGE	01-16-10	73-27	w	11-3-1	13-5-3	0-2-0
UNC ASHEVILLE	01-18-10	82-40	w	10-5-3	12-8-2	2-1-0
at Charleston Southern	01-23-10	65-52	w	3-2-1	11-6-4	0-1-0
at Coastal Carolina	01-25-10	57-38	w	2-3-2	17-10-1	DNP
at High Point	01-30-10	75-62	w	2-1-2	29-11-2	0-0-0
at Radford	02-01-10	63-45	w	9-1-2	20-11-1	0-1-0
N.C. CENTRAL	02-04-10	64-44	w	6-4-1	10-6-0	0-0-0
GARDNER-WEBB	02-08-10	56-59	L	9-2-3	13-13-1	DNP
at Winthrop	02-15-10	52-18	w	3-4-1	15-5-2	2-4-0
COASTAL CAROLINA	02-20-10	57-55	w	0-2-3	14-6-1	3-3-1
CHARLESTON SOUTHERN	02-22-10	66-56	w	4-2-1	20-12-2	0-0-0
at UNC Asheville	02-27-10	94-66	w	2-1-4	12-5-2	3-4-0
at Presbyterian College	03-01-10	55-40	w	3-3-0	15-5-0	1-2-0
RADFORD	03-05-10	66-33	w	0-2-2	10-6-0	0-1-0
HIGH POINT	03-08-10	73-48	w	3-2-2	23-9-1	0-1-0
vs Radford	03-12-10	70-52	w	5-3-1	23-8-1	0-1-0
at High Point	03-13-10	73-55	w	3-4-2	17-7-1	0-1-0
vs Gardner-Webb	03-14-10	68-66	w	6-4-1	24-8-1	DNP



2009-10 Liberty Women's Basketball
Liberty Player High/Low Analysis (as of Mar 16, 2010)
All games



Liberty - INDIVIDUAL GAME HIGHS

Points	29		BROWN, Devon at High Point (01-30-10)
	26		WARLEY, Avery at High Point (01-30-10)
	26		BROWN, Devon vs UNC Greensboro (11-17-09)
	26		BROWN, Devon vs Winston-Salem State (11-13-09)
	24		BROWN, Devon vs Gardner-Webb (03-14-10)
Field Goals Made	12		BROWN, Devon at High Point (01-30-10)
	11		BROWN, Devon vs UNC Greensboro (11-17-09)
Field Goal Att.	11		BROWN, Devon vs Winston-Salem State (11-13-09)
	18		BROWN, Devon vs Gardner-Webb (02-08-10)
	17		BROWN, Devon at High Point (01-30-10)
FG Pct (min 5 made)	17		BROWN, Devon vs Longwood (01-12-10)
	1.000	(9-9)	WARLEY, Avery vs Charleston Southern (02-22-10)
	1.000	(7-7)	ANTIC, Jelena vs Presbyterian College (01-16-10)
	1.000	(6-6)	ANTIC, Jelena vs High Point (03-08-10)
3-Point FG Made	1.000	(5-5)	WASHINGTON, LaKendra vs Radford (03-05-10)
	3		BROWN, Devon vs High Point (03-08-10)
	3		BROWN, Devon vs Presbyterian College (01-16-10)
	3		BROWN, Devon at Navy (11-21-09)
	3		BROWN, Devon vs Tulane (11-20-09)
3-Point FG Att.	3		BROWN, Devon vs Winston-Salem State (11-13-09)
	6		BROWN, Devon at High Point (03-13-10)
	6		BROWN, Devon vs Charleston Southern (02-22-10)
	6		BROWN, Devon vs Winthrop (01-09-10)
	6		BROWN, Devon at Virginia (12-29-09)
3-Pt FG Pct (min 2 made)	6		WASHINGTON, LaKendra vs Winston-Salem State (11-13-09)
	1.000	(2-2)	BROWN, Devon at UNC Asheville (02-27-10)
	1.000	(2-2)	WASHINGTON, LaKendra at Coastal Carolina (01-25-10)
	1.000	(2-2)	MAYS, Amber vs UNC Asheville (01-18-10)
Free Throws Made	1.000	(2-2)	ANTIC, Jelena at Gardner-Webb (01-02-10)
	8		BROWN, Devon at Radford (02-01-10)
	8		WARLEY, Avery at High Point (01-30-10)
	8		BEECHER, Kylee vs UNC Asheville (01-18-10)
Free Throw Att.	8		BROWN, Devon at Navy (11-21-09)
	11		WARLEY, Avery at High Point (01-30-10)
	10		DALE, Danika vs Radford (03-12-10)
FT Pct (min 3 made)	10		BEECHER, Kylee vs UNC Asheville (01-18-10)
	1.000	(7-7)	BROWN, Devon vs Radford (03-12-10)
	1.000	(7-7)	WARLEY, Avery at Presbyterian College (03-01-10)
	1.000	(6-6)	BROWN, Devon vs Longwood (01-12-10)
	1.000	(4-4)	MORGAN, Dymond at Presbyterian College (03-01-10)
	1.000	(4-4)	BEECHER, Kylee vs Charleston Southern (02-22-10)
	1.000	(4-4)	BROWN, Devon at Coastal Carolina (01-25-10)
	1.000	(4-4)	BROWN, Devon at Gardner-Webb (01-02-10)
	1.000	(4-4)	BEECHER, Kylee vs Winston-Salem State (11-13-09)
	1.000	(4-4)	DALE, Danika vs Winston-Salem State (11-13-09)
	1.000	(3-3)	DALE, Danika at Winthrop (02-15-10)
	1.000	(3-3)	BROWN, Devon vs Winthrop (01-09-10)
	1.000	(3-3)	BROWN, Devon at Auburn (12-15-09)
1.000	(3-3)	WARLEY, Avery at Lafayette (11-28-09)	
Rebounds	16		WARLEY, Avery at Charleston Southern (01-23-10)
	14		WARLEY, Avery at High Point (01-30-10)
Assists	10		MAYS, Amber vs Winthrop (01-09-10)
	8		MAYS, Amber vs N.C. Central (02-04-10)

	8	MAYS, Amber vs Cornell (12-28-09)
Steals	5	DALE, Danika vs Radford (03-05-10)
	5	BROWN, Devon vs Coastal Carolina (02-20-10)
	5	MORGAN, Dymond vs Presbyterian College (01-16-10)
	5	MAYS, Amber vs Longwood (01-12-10)
	5	BROWN, Devon at Navy (11-21-09)
	5	WASHINGTON, LaKendra vs Winston-Salem State (11-13-09)
Blocked Shots	3	WARLEY, Avery vs High Point (03-08-10)
	3	WARLEY, Avery at Winthrop (02-15-10)
	3	WARLEY, Avery vs UNC Asheville (01-18-10)
Turnovers	8	MAYS, Amber vs Gardner-Webb (03-14-10)
	8	MORGAN, Dymond vs Glenville State (12-05-09)
Fouls	5	MAYS, Amber vs Gardner-Webb (03-14-10)
	5	WARLEY, Avery vs Gardner-Webb (02-08-10)
	5	MAYS, Amber at High Point (01-30-10)
	5	WARLEY, Avery vs Longwood (01-12-10)
	5	WARLEY, Avery at Gardner-Webb (01-02-10)
	5	ANTIC, Jelena at Gardner-Webb (01-02-10)
	5	MAYS, Amber at Virginia (12-29-09)
	5	WARLEY, Avery vs James Madison (12-01-09)
	5	WASHINGTON, LaKendra vs UNC Greensboro (11-17-09)



2009-10 Liberty Women's Basketball
Liberty Opponent High/Low Analysis (as of Mar 16, 2010)
All games



OPPONENT INDIVIDUAL GAME HIGHS

Points	22		Jackson, Lauren at Lafayette (11-28-09)
	20		MOSS, Sydnei at Coastal Carolina (01-25-10)
	19		WASMER, Kelsey vs Charleston Southern (02-22-10)
	19		STULL, Amanda vs Coastal Carolina (02-20-10)
	19		MOSS, Sydnei vs Coastal Carolina (02-20-10)
	19		Wright, Monica at Virginia (12-29-09)
Field Goals Made	7		MOSS, Sydnei vs Coastal Carolina (02-20-10)
	7		Wright, Monica at Virginia (12-29-09)
Field Goal Att.	20		MILLER, Joanna vs N.C. Central (02-04-10)
	17		MOSS, Sydnei at Coastal Carolina (01-25-10)
FG Pct (min 5 made)	.833	(5-6)	BROWN, Shamia at High Point (01-30-10)
	.833	(5-6)	SAMS, Jaleesa vs North Carolina A&T (01-05-10)
	.833	(5-6)	McCall, Telia at Virginia (12-29-09)
3-Point FG Made	5		STULL, Amanda vs Coastal Carolina (02-20-10)
	4		TERRY, Helen vs Charleston Southern (02-22-10)
	4		WASMER, Kelsey vs Charleston Southern (02-22-10)
	4		MOSS, Sydnei at Coastal Carolina (01-25-10)
	4		Smalley, Alli at Auburn (12-15-09)
	4		KALJO, Indira vs Tulane (11-20-09)
3-Point FG Att.	12		KALJO, Indira vs Tulane (11-20-09)
	11		Autumn Davis vs Glensville State (12-05-09)
3-Pt FG Pct (min 2 made)	1.000	(3-3)	HUDSON, Dominique vs Gardner-Webb (02-08-10)
	1.000	(2-2)	WOOD, Denay vs Radford (03-05-10)
	1.000	(2-2)	BLANKS, Shanise vs N.C. Central (02-04-10)
Free Throws Made	10		HUDSON, Dominique vs Gardner-Webb (03-14-10)
	7		HUDSON, Monique at Gardner-Webb (01-02-10)
	7		Greenleaf, Jordan at Auburn (12-15-09)
	7		Hislop, Tarik vs James Madison (12-01-09)
	7		Jackson, Lauren at Lafayette (11-28-09)
Free Throw Att.	11		HUDSON, Dominique vs Gardner-Webb (03-14-10)
	9		Hislop, Tarik vs James Madison (12-01-09)
FT Pct (min 3 made)	1.000	(6-6)	ERWINSPENCER, Da'Nar at Radford (02-01-10)
	1.000	(4-4)	MONTGOMERY, Lindsey at UNC Asheville (02-27-10)
	1.000	(4-4)	STULL, Amanda vs Coastal Carolina (02-20-10)
	1.000	(4-4)	MOSS, Sydnei at Coastal Carolina (01-25-10)
	1.000	(4-4)	SCHWAGMEYER, Ali at Charleston Southern (01-23-10)
	1.000	(4-4)	HUDSON, Dominique at Gardner-Webb (01-02-10)
	1.000	(3-3)	RYSKA, Kathi at Winthrop (02-15-10)
Rebounds	10		MONTGOMERY, Lindsey at UNC Asheville (02-27-10)
	9		Consedine, Cassie at Navy (11-21-09)
Assists	9		HUDSON, Dominique at Gardner-Webb (01-02-10)
	8		SHEPARD, Kendall at UNC Asheville (02-27-10)
Steals	10		Wright, Monica at Virginia (12-29-09)
	5		SHEPARD, Kendall vs UNC Asheville (01-18-10)
	5		Kellum, Paulisha at Virginia (12-29-09)
Blocked Shots	4		MONTGOMERY, Lindsey at UNC Asheville (02-27-10)
	3		WHITE, Katie at Coastal Carolina (01-25-10)
	3		POPE, LaTroya at Gardner-Webb (01-02-10)
Turnovers	9		MILLER, Joanna vs N.C. Central (02-04-10)
	9		ERWINSPENCER, Da'Nar at Radford (02-01-10)
	9		Becky Fernandes vs Longwood (01-12-10)
	9		Benson, Lauren vs Cornell (12-28-09)
Fouls	5		MONTGOMERY, Lindsey at UNC Asheville (02-27-10)

5 RILES, Kelli at UNC Asheville (02-27-10)
5 WASMER, Kelsey vs Charleston Southern (02-22-10)
5 WHITE, Chanel at Winthrop (02-15-10)
5 RILES, Kelli vs UNC Asheville (01-18-10)
5 Morgan Smith vs Longwood (01-12-10)
5 HUDSON, Dominique at Gardner-Webb (01-02-10)
5 POPE, LaTroya at Gardner-Webb (01-02-10)
5 Myers, Angela at Navy (11-21-09)
5 BROWN, Chassity vs Tulane (11-20-09)
5 RECTOR, Rene vs Winston-Salem State (11-13-09)



2009-10 Liberty Women's Basketball
Liberty Team High/Low Analysis (as of Mar 16, 2010)
All games



Liberty - TEAM GAME HIGHS

POINTS	94	at UNC Asheville (02-27-10)
	90	at Lafayette (11-28-09)
	86	GLENVILLE STATE (12-05-09)
	82	UNC ASHEVILLE (01-18-10)
	78	LONGWOOD (01-12-10)
FIELD GOALS MADE	37	at Lafayette (11-28-09)
	35	GLENVILLE STATE (12-05-09)
FIELD GOAL ATTEMPTS	71	at UNC Asheville (02-27-10)
	63	UNC ASHEVILLE (01-18-10)
FIELD GOAL PERCENTAGE	.644 (29-45)	PRESBYTERIAN COLLEGE (01-16-10)
	.617 (37-60)	at Lafayette (11-28-09)
3 PT FIELD GOALS MADE	9	UNC ASHEVILLE (01-18-10)
	6	at UNC Asheville (02-27-10)
3 PT FG ATTEMPTS	17	UNC ASHEVILLE (01-18-10)
	14	WINSTON-SALEM STATE (11-13-09)
3 PT FG PERCENTAGE	.667 (4-6)	vs Tulane (11-20-09)
	.545 (6-11)	at UNC Asheville (02-27-10)
FREE THROWS MADE	26	at High Point (01-30-10)
	22	at Presbyterian College (03-01-10)
	22	at UNC Asheville (02-27-10)
FREE THROW ATTEMPTS	40	at UNC Asheville (02-27-10)
	35	at High Point (01-30-10)
	35	at Auburn (12-15-09)
FREE THROW PERCENTAGE	.923 (12-13)	at Auburn (12-15-09)
	.846 (22-26)	at Presbyterian College (03-01-10)
REBOUNDS	67	GLENVILLE STATE (12-05-09)
	54	LONGWOOD (01-12-10)
ASSISTS	25	GLENVILLE STATE (12-05-09)
	22	at UNC Asheville (02-27-10)
	22	WINTHROP (01-09-10)
STEALS	19	PRESBYTERIAN COLLEGE (01-16-10)
	18	UNC ASHEVILLE (01-18-10)
BLOCKED SHOTS	6	UNC ASHEVILLE (01-18-10)
	5	at High Point (03-13-10)
	5	at Winthrop (02-15-10)
TURNOVERS	33	GLENVILLE STATE (12-05-09)
	30	at Virginia (12-29-09)
FOULS	27	at Gardner-Webb (01-02-10)
	23	JAMES MADISON (12-01-09)
	23	at Lafayette (11-28-09)



2009-10 Liberty Women's Basketball
Liberty High/Low Analysis (as of Mar 16, 2010)
All games



Opponent - GAME HIGHS

POINTS	70		at Gardner-Webb (01-02-10)
	70		at Auburn (12-15-09)
	66		vs Gardner-Webb (03-14-10)
	66		at UNC Asheville (02-27-10)
	63		at Virginia (12-29-09)
FIELD GOALS MADE	24		at Auburn (12-15-09)
	23		at High Point (03-13-10)
	23		GARDNER-WEBB (02-08-10)
FIELD GOAL ATTEMPTS	78		GLENVILLE STATE (12-05-09)
	57		vs Gardner-Webb (03-14-10)
FIELD GOAL PERCENTAGE	.523	(23-44)	GARDNER-WEBB (02-08-10)
	.480	(24-50)	at Auburn (12-15-09)
3 PT FIELD GOALS MADE	10		CHARLESTON SOUTHERN (02-22-10)
	9		COASTAL CAROLINA (02-20-10)
3 PT FG ATTEMPTS	49		GLENVILLE STATE (12-05-09)
	30		at Charleston Southern (01-23-10)
3 PT FG PERCENTAGE	.600	(3-5)	at Lafayette (11-28-09)
	.500	(9-18)	COASTAL CAROLINA (02-20-10)
FREE THROWS MADE	26		at Gardner-Webb (01-02-10)
	20		at Lafayette (11-28-09)
FREE THROW ATTEMPTS	36		at Gardner-Webb (01-02-10)
	32		JAMES MADISON (12-01-09)
FREE THROW PERCENTAGE	1.000	(6-6)	at Coastal Carolina (01-25-10)
	.857	(18-21)	vs Gardner-Webb (03-14-10)
REBOUNDS	41		JAMES MADISON (12-01-09)
	35		UNC GREENSBORO (11-17-09)
ASSISTS	17		at Gardner-Webb (01-02-10)
	16		vs Tulane (11-20-09)
STEALS	19		at Virginia (12-29-09)
	15		GLENVILLE STATE (12-05-09)
BLOCKED SHOTS	5		at UNC Asheville (02-27-10)
	5		at Coastal Carolina (01-25-10)
TURNOVERS	32		WINSTON-SALEM STATE (11-13-09)
	30		PRESBYTERIAN COLLEGE (01-16-10)
FOULS	27		at UNC Asheville (02-27-10)
	25		at High Point (01-30-10)



**2009-10 Liberty Women's Basketball
Liberty High/Low Analysis (as of Mar 16, 2010)
All games**



Liberty - GAME LOWS

POINTS	50		JAMES MADISON (12-01-09)
	52		at Winthrop (02-15-10)
	54		at Virginia (12-29-09)
	55		at Navy (11-21-09)
	55		at Presbyterian College (03-01-10)
FIELD GOALS MADE	16		at Presbyterian College (03-01-10)
	18		JAMES MADISON (12-01-09)
FIELD GOAL ATTEMPTS	41		at Radford (02-01-10)
	42		at Presbyterian College (03-01-10)
FIELD GOAL PERCENTAGE	.305	(18-59)	JAMES MADISON (12-01-09)
	.381	(16-42)	at Presbyterian College (03-01-10)
3 PT FIELD GOALS MADE	0		GLENVILLE STATE (12-05-09)
	0		at Radford (02-01-10)
	0		COASTAL CAROLINA (02-20-10)
	0		RADFORD (03-05-10)
3 PT FG ATTEMPTS	1		GLENVILLE STATE (12-05-09)
	3		at Radford (02-01-10)
3 PT FG PERCENTAGE	.000	(0-1)	GLENVILLE STATE (12-05-09)
	.000	(0-3)	at Radford (02-01-10)
	.000	(0-5)	COASTAL CAROLINA (02-20-10)
	.000	(0-4)	RADFORD (03-05-10)
FREE THROWS MADE	8		at Virginia (12-29-09)
	8		WINTHROP (01-09-10)
	8		N.C. CENTRAL (02-04-10)
FREE THROW ATTEMPTS	10		at Virginia (12-29-09)
	11		WINTHROP (01-09-10)
FREE THROW PERCENTAGE	.455	(10-22)	UNC GREENSBORO (11-17-09)
	.524	(11-21)	vs Cornell (12-28-09)
REBOUNDS	23		at Auburn (12-15-09)
	28		COASTAL CAROLINA (02-20-10)
ASSISTS	4		at Presbyterian College (03-01-10)
	6		JAMES MADISON (12-01-09)
STEALS	6		at Auburn (12-15-09)
	6		JAMES MADISON (12-01-09)
	6		N.C. CENTRAL (02-04-10)
	6		vs Radford (03-12-10)
BLOCKED SHOTS	0		at Navy (11-21-09)
	0		at UNC Asheville (02-27-10)
TURNOVERS	12		vs Radford (03-12-10)
	13		at Coastal Carolina (01-25-10)
FOULS	13		at High Point (03-13-10)
	10		PRESBYTERIAN COLLEGE (01-16-10)
	11		UNC ASHEVILLE (01-18-10)



**2009-10 Liberty Women's Basketball
Liberty High/Low Analysis (as of Mar 16, 2010)
All games**



Opponent - GAME LOWS

POINTS	18		at Winthrop (02-15-10)
	26		WINSTON-SALEM STATE (11-13-09)
	27		PRESBYTERIAN COLLEGE (01-16-10)
	33		RADFORD (03-05-10)
	38		WINTHROP (01-09-10)
FIELD GOALS MADE	38		at Coastal Carolina (01-25-10)
	5		at Winthrop (02-15-10)
FIELD GOAL ATTEMPTS	10		PRESBYTERIAN COLLEGE (01-16-10)
	33		at Presbyterian College (03-01-10)
FIELD GOAL PERCENTAGE	36		PRESBYTERIAN COLLEGE (01-16-10)
	.119	(5-42)	at Winthrop (02-15-10)
3 PT FIELD GOALS MADE	.192	(15-78)	GLENVILLE STATE (12-05-09)
	0		at Winthrop (02-15-10)
3 PT FG ATTEMPTS	1		WINSTON-SALEM STATE (11-13-09)
	1		PRESBYTERIAN COLLEGE (01-16-10)
3 PT FG PERCENTAGE	5		at Lafayette (11-28-09)
	7		at Virginia (12-29-09)
FREE THROWS MADE	.000	(0-14)	at Winthrop (02-15-10)
	.056	(1-18)	PRESBYTERIAN COLLEGE (01-16-10)
FREE THROW ATTEMPTS	3		WINSTON-SALEM STATE (11-13-09)
	5		vs Tulane (11-20-09)
	5		RADFORD (03-05-10)
FREE THROW PERCENTAGE	5		at High Point (03-13-10)
	5		WINSTON-SALEM STATE (11-13-09)
REBOUNDS	6		at Coastal Carolina (01-25-10)
	.421	(8-19)	UNC GREENSBORO (11-17-09)
	.500	(5-10)	vs Tulane (11-20-09)
	.500	(5-10)	at High Point (03-13-10)
ASSISTS	.500	(8-16)	NORTH CAROLINA A&T (01-05-10)
	16		CHARLESTON SOUTHERN (02-22-10)
STEALS	17		at Presbyterian College (03-01-10)
	2		at Winthrop (02-15-10)
BLOCKED SHOTS	5		WINSTON-SALEM STATE (11-13-09)
	2		at Lafayette (11-28-09)
TURNOVERS	2		at High Point (01-30-10)
	0		WINSTON-SALEM STATE (11-13-09)
	0		at Navy (11-21-09)
	0		vs Cornell (12-28-09)
	0		WINTHROP (01-09-10)
	0		COASTAL CAROLINA (02-20-10)
	0		CHARLESTON SOUTHERN (02-22-10)
	0		vs Radford (03-12-10)
FOULS	0		at High Point (03-13-10)
	13		at Gardner-Webb (01-02-10)
	15		JAMES MADISON (12-01-09)
FOULS	15		at Charleston Southern (01-23-10)
	15		at High Point (03-13-10)
	13		WINSTON-SALEM STATE (11-13-09)
FOULS	13		at Auburn (12-15-09)
	13		N.C. CENTRAL (02-04-10)



2009-10 Liberty Women's Basketball
Liberty Team Game-by-Game (as of Mar 16, 2010)
All games



TEAM STATISTICS

Opponent	Date	Score		Total		3-Pointers		Free throws		Rebounds				pf	a	t/o	blk	stl	pts	avg
				fg-fga	pct	3fg-fga	pct	ft-fa	pct	off	def	tot	avg							
WINSTON-SALEM STATE	11-13-09	71-26	W	27-57	.474	4-14	.286	13-17	.765	16	23	39	39.0	15	18	19	4	15	71	71.0
UNC GREENSBORO	11-17-09	60-42	W	24-49	.490	2-9	.222	10-22	.455	13	27	40	39.5	17	10	19	4	14	60	65.5
vs Tulane	11-20-09	63-52	W	24-47	.511	4-6	.667	11-19	.579	15	23	38	39.0	16	10	24	3	11	63	64.7
at Navy	11-21-09	55-43	W	19-48	.396	3-8	.375	14-21	.667	17	23	40	39.2	14	11	18	0	7	55	62.2
at Lafayette	11-28-09	90-55	W	37-60	.617	3-6	.500	13-20	.650	15	18	33	38.0	23	15	14	1	14	90	67.8
JAMES MADISON	12-01-09	50-60	L	18-59	.305	1-9	.111	13-17	.765	14	32	46	39.3	23	6	20	3	6	50	64.8
GLENVILLE STATE	12-05-09	86-45	W	35-57	.614	0-1	.000	16-28	.571	18	49	67	43.3	17	25	33	2	11	86	67.9
at Auburn	12-15-09	64-70	L	25-51	.490	2-7	.286	12-13	.923	6	17	23	40.8	18	6	16	1	8	64	67.4
vs Cornell	12-28-09	70-40	W	28-53	.528	3-11	.273	11-21	.524	16	27	43	41.0	18	16	22	4	12	70	67.7
at Virginia	12-29-09	54-63	L	22-54	.407	2-11	.182	8-10	.800	16	18	34	40.3	20	7	30	3	10	54	66.3
at Gardner-Webb	01-02-10	65-70	L	23-52	.442	4-9	.444	15-25	.600	16	30	46	40.8	27	11	23	1	10	65	66.2
NORTH CAROLINA A&T	01-05-10	57-51	W	21-54	.389	1-6	.167	14-23	.609	19	26	45	41.2	16	13	23	3	11	57	65.4
WINTHROP	01-09-10	67-38	W	27-53	.509	5-13	.385	8-11	.727	12	25	37	40.8	15	22	16	3	14	67	65.5
LONGWOOD	01-12-10	78-55	W	30-61	.492	1-9	.111	17-24	.708	26	28	54	41.8	19	19	28	3	12	78	66.4
PRESBYTERIAN COLLEG	01-16-10	73-27	W	29-45	.644	5-11	.455	10-17	.588	11	21	32	41.1	10	17	21	2	19	73	66.9
UNC ASHEVILLE	01-18-10	82-40	W	29-63	.460	9-17	.529	15-24	.625	24	25	49	41.6	11	21	18	6	18	82	67.8
at Charleston Southern	01-23-10	65-52	W	25-49	.510	1-6	.167	14-25	.560	15	29	44	41.8	17	10	17	1	8	65	67.6
at Coastal Carolina	01-25-10	57-38	W	20-52	.385	3-8	.375	14-23	.609	22	23	45	41.9	15	9	13	3	10	57	67.1
at High Point	01-30-10	75-62	W	24-50	.480	1-6	.167	26-35	.743	12	30	42	41.9	19	9	14	3	8	75	67.5
at Radford	02-01-10	63-45	W	21-41	.512	0-3	.000	21-29	.724	13	23	36	41.7	15	12	24	4	15	63	67.2
N.C. CENTRAL	02-04-10	64-44	W	26-52	.500	4-9	.444	8-13	.615	21	17	38	41.5	15	18	21	3	6	64	67.1
GARDNER-WEBB	02-08-10	56-59	L	21-53	.396	3-11	.273	11-18	.611	14	19	33	41.1	19	11	15	2	8	56	66.6
at Winthrop	02-15-10	52-18	W	20-51	.392	3-12	.250	9-14	.643	18	24	42	41.1	15	8	20	5	12	52	66.0
COASTAL CAROLINA	02-20-10	57-55	W	23-48	.479	0-5	.000	11-20	.550	13	15	28	40.6	16	10	14	1	12	57	65.6
CHARLESTON SOUTHER	02-22-10	66-56	W	24-44	.545	1-8	.125	17-29	.586	17	21	38	40.5	19	10	22	1	11	66	65.6
at UNC Asheville	02-27-10	94-66	W	33-71	.465	6-11	.545	22-40	.550	27	16	43	40.6	18	22	14	0	16	94	66.7
at Presbyterian College	03-01-10	55-40	W	16-42	.381	1-5	.200	22-26	.846	16	20	36	40.4	20	4	21	1	16	55	66.3
RADFORD	03-05-10	66-33	W	26-51	.510	0-4	.000	14-20	.700	19	27	46	40.6	14	12	23	2	15	66	66.2
HIGH POINT	03-08-10	73-48	W	29-55	.527	3-7	.429	12-18	.667	13	22	35	40.4	14	13	14	3	9	73	66.5
vs Radford	03-12-10	70-52	W	24-50	.480	2-5	.400	20-33	.606	13	26	39	40.4	19	9	12	1	6	70	66.6
at High Point	03-13-10	73-55	W	27-54	.500	4-10	.400	15-25	.600	12	27	39	40.3	14	8	13	5	12	73	66.8
vs Gardner-Webb	03-14-10	68-66	W	28-47	.596	1-6	.167	11-16	.688	11	19	30	40.0	22	9	26	2	13	68	66.8
Liberty		2139		805-1673	.481	82-263	.312	447-696	.642	510	770	1280	40.0	550	401	627	80	369	2139	66.8
Opponents		1566		530-1519	.349	147-532	.276	359-544	.660	322	511	833	26.0	605	341	668	61	250	1566	48.9

Games played: 32
Points/game: 66.8
FG Pct: 48.1
3FG Pct: 31.2
FT Pct: 64.2

Rebounds/game: 40.0
Assists/game: 12.5
Turnovers/game: 19.6
Assist/turnover ratio: 0.6
Steals/game: 11.5
Blocks/game: 2.5



2009-10 Liberty Women's Basketball Liberty Team Game-by-Game Comparison (as of Mar 16, 2010) All games



Opponent	1st	2nd	Score	Mar	Total FG	FG Pct	3-Pointers	3FG Pct	Free Throws	FT Pct	Rebounds	Assist	T/Over	Block	Steal	Fouls	
WINSTON-SALEM STATE	30/12	41/14	71-26	+45	27-57/11-42	.474/.262	4-14/1-12	.286/.083	13-17/3-5	.765/.600	39/25	+14	185	19/32	4/0	15/4	15/13
UNC GREENSBORO	32/21	28/21	60-42	+18	24-49/15-52	.490/.288	2-9/4-24	.222/.167	10-22/8-19	.455/.421	40/35	+5	10/10	19/21	4/1	14/11	17/21
Tulane	32/19	31/33	63-52	+11	24-47/20-48	.511/.417	4-6/7-21	.667/.333	11-19/5-10	.579/.500	38/22	+16	10/16	24/22	3/2	11/8	16/19
Navy	24/32	31/11	55-43	+12	19-48/15-44	.396/.341	3-8/4-20	.375/.200	14-21/9-15	.667/.600	40/26	+14	11/11	18/17	0/0	7/8	14/19
Lafayette	42/28	48/27	90-55	+35	37-60/16-39	.617/.410	3-6/3-5	.500/.600	13-20/20-26	.650/.769	33/20	+13	15/8	14/24	1/2	14/2	23/20
JAMES MADISON	16/28	34/32	50-60	+10	18-59/18-54	.305/.333	1-9/5-18	.111/.278	13-17/19-32	.765/.594	46/41	+5	6/3	20/15	3/3	6/4	23/15
GLENVILLE STATE	39/23	47/22	86-45	+41	35-57/15-78	.614/.192	0-1/7-49	.000/.143	16-28/8-11	.571/.727	67/29	+38	25/12	33/20	2/1	11/15	17/24
Auburn	19/33	45/37	64-70	+4	25-51/24-50	.490/.480	2-7/6-17	.286/.353	12-13/16-23	.923/.696	23/34	(11)	6/14	16/19	1/3	8/6	18/13
Cornell	31/14	39/26	70-40	+30	28-53/13-48	.528/.271	3-11/4-16	.273/.250	11-21/10-18	.524/.556	43/25	+18	16/9	22/22	4/0	12/6	18/17
Virginia	29/33	25/30	54-63	(9)	22-54/21-49	.407/.429	2-11/2-7	.182/.286	8-10/19-26	.800/.731	34/26	+8	7/3	30/20	3/2	10/19	20/15
Gardner-Webb	29/29	36/41	65-70	(5)	23-52/19-51	.442/.373	4-9/6-16	.444/.375	15-25/26-36	.600/.722	46/27	+19	11/17	23/13	1/3	10/9	27/24
NORTH CAROLINA A&T	33/27	24/24	57-51	+6	21-54/19-48	.389/.396	1-6/5-17	.167/.294	14-23/8-16	.609/.500	45/28	+17	13/13	23/19	3/3	11/9	16/18
WINTHROP	24/16	43/22	67-38	+29	27-53/13-41	.509/.317	5-13/3-9	.385/.333	8-11/9-13	.727/.692	37/21	+16	22/10	16/20	3/0	14/4	15/15
LONGWOOD	38/25	40/30	78-55	+23	30-61/18-52	.492/.346	1-9/7-22	.111/.318	17-24/12-18	.708/.667	54/19	+35	19/13	28/24	3/3	12/12	19/24
PRESBYTERIAN COLLEGE	36/10	37/17	73-27	+46	29-45/10-36	.644/.278	5-11/1-18	.455/.056	10-17/16-10	.588/.600	32/18	+14	17/7	21/30	2/1	19/10	10/16
UNC ASHEVILLE	41/17	41/23	82-40	+42	29-63/14-51	.460/.275	9-17/5-12	.529/.417	15-24/7-12	.625/.583	49/27	+22	21/9	18/25	6/1	18/9	11/19
Charleston Southern	37/24	28/28	65-52	+13	25-49/13-47	.510/.277	1-6/8-30	.167/.267	14-25/18-22	.560/.818	44/26	+18	10/10	17/15	1/2	8/6	17/23
Coastal Carolina	16/21	41/17	57-38	+19	20-52/13-41	.385/.317	3-8/6-14	.375/.429	14-23/6-6	.609/.000	45/21	+24	9/7	13/20	3/5	10/7	15/19
High Point	34/41	41/21	75-62	+13	24-50/20-49	.480/.408	1-6/5-14	.167/.357	26-35/17-27	.743/.630	42/25	+17	9/15	14/16	3/4	8/2	19/25
Radford	30/15	33/30	63-45	+18	21-41/15-51	.512/.294	0-3/3-12	.000/.250	21-29/12-17	.724/.706	36/26	+10	12/8	24/23	4/3	15/7	15/21
N.C. CENTRAL	30/20	34/24	64-44	+20	26-52/17-45	.500/.378	4-9/2-11	.444/.182	8-13/8-12	.615/.667	38/21	+17	18/12	21/21	3/3	6/11	15/13
GARDNER-WEBB	27/25	29/34	56-59	(3)	21-53/23-44	.396/.523	3-11/6-13	.273/.462	11-18/7-12	.611/.583	33/27	+6	11/13	15/17	2/1	8/4	19/19
Winthrop	23/10	29/8	52-18	+34	20-51/5-42	.392/.119	3-12/0-14	.250/.000	9-14/8-11	.643/.727	42/32	+10	8/2	20/28	5/3	12/9	15/17
COASTAL CAROLINA	33/29	24/26	57-55	+2	23-48/19-42	.479/.452	0-5/9-18	.000/.500	11-20/8-13	.550/.615	28/26	+2	10/13	14/20	1/0	12/6	16/14
CHARLESTON SOUTHERN	34/29	32/27	66-56	+10	24-44/18-41	.545/.439	1-8/10-25	.125/.400	17-29/10-16	.586/.625	38/16	+22	10/13	22/22	1/0	11/3	19/22
UNC Asheville	54/33	40/33	94-66	+28	33-71/21-44	.465/.477	6-11/6-16	.545/.375	22-40/18-24	.550/.750	43/33	+10	22/15	14/28	0/5	16/9	18/27
Presbyterian College	33/16	22/24	55-40	+15	16-42/14-33	.381/.424	1-5/2-9	.200/.222	22-26/10-16	.846/.625	36/17	+19	4/6	21/22	1/3	16/10	20/21
RADFORD	29/17	37/16	66-33	+33	26-51/12-51	.510/.235	0-4/4-16	.000/.250	14-20/5-8	.700/.625	46/23	+23	12/6	23/23	2/2	15/12	14/14
HIGH POINT	33/25	40/23	73-48	+25	29-55/16-47	.527/.340	3-7/5-16	.429/.313	12-18/11-18	.667/.611	35/28	+7	13/8	14/21	3/3	9/8	14/17
Radford	33/21	37/31	70-52	+18	24-50/18-50	.480/.360	2-5/3-13	.400/.231	20-33/13-21	.606/.619	39/32	+7	9/9	12/16	1/0	6/4	19/20
High Point	33/32	40/23	73-55	+18	27-54/23-52	.500/.442	4-10/4-10	.400/.400	15-25/5-10	.600/.500	39/28	+11	8/11	13/15	5/0	12/5	14/21
Gardner-Webb	38/24	30/42	68-66	+2	28-47/22-57	.596/.386	1-6/4-18	.167/.222	11-16/18-21	.688/.857	30/29	+1	9/13	26/18	2/2	13/11	22/20

Note: Game totals are displayed in the format TEAM/OPPONENT for each category



2009-10 Liberty Women's Basketball
Liberty Combined Team Statistics (as of Mar 16, 2010)
Conference games



RECORD:	OVERALL	HOME	AWAY	NEUTRAL
ALL GAMES	14-2	7-1	7-1	0-0
CONFERENCE	14-2	7-1	7-1	0-0
NON-CONFERENCE	0-0	0-0	0-0	0-0

#	Player	gp-gs	min	avg	Total		3-Point		F-Throw		Rebounds				pf	dq	a	to	blk	stl	pts	avg
					fg-fga	fg%	3fg-fga	3fg%	ft-fa	ft%	off	def	tot	avg								
40	BROWN, Devon	16-16	439	27.4	95-195	.487	18-57	.316	46-64	.719	39	90	129	8.1	33	0	23	38	6	34	254	15.9
23	WARLEY, Avery	16-16	425	26.6	76-125	.608	0-1	.000	49-82	.598	65	82	147	9.2	43	2	7	39	20	23	201	12.6
11	ANTIC, Jelena	10-4	221	22.1	38-59	.644	4-8	.500	10-17	.588	26	19	45	4.5	25	1	15	20	1	12	90	9.0
21	MAYS, Amber	16-16	401	25.1	48-96	.500	2-5	.400	26-49	.531	9	17	26	1.6	37	1	57	44	1	29	124	7.8
15	BEECHER, Kylee	16-12	399	24.9	33-84	.393	1-8	.125	41-52	.788	35	38	73	4.6	28	0	14	26	3	13	108	6.8
12	DALE, Danika	16-0	292	18.3	26-59	.441	5-13	.385	17-26	.654	14	33	47	2.9	20	0	16	28	4	15	74	4.6
32	McLEOD, Rachel	16-16	400	25.0	23-67	.343	5-11	.455	20-24	.833	18	26	44	2.8	11	0	31	21	0	20	71	4.4
25	MORGAN, Dymond	16-0	275	17.2	22-72	.306	4-15	.267	21-34	.618	3	11	14	0.9	32	0	27	31	0	33	69	4.3
01	WASHINGTON, LaKen	16-0	235	14.7	26-49	.531	6-18	.333	6-15	.400	6	8	14	0.9	21	0	10	23	0	22	64	4.0
54	COY, Carra	14-0	113	8.1	3-14	.214	0-0	.000	5-11	.455	15	9	24	1.7	14	0	1	6	3	0	11	0.8
Team											32	37	69				13					
Total.....		16	3200		390-820	.476	45-136	.331	241-374	.644	262	370	632	39.5	264	4	201	289	38	201	1066	66.6
Opponents.....		16	3200		245-711	.345	79-252	.313	178-261	.682	145	248	393	24.6	313	-	159	343	36	115	747	46.7

TEAM STATISTICS	LIBERTY	OPP	Date	Opponent	Score	Att.
SCORING	1066	747	* 01-02-10	at Gardner-Webb	L 65-70	249
Points per game	66.6	46.7	* 01-09-10	WINTHROP	w 67-38	557
Scoring margin	+19.9	-	* 01-16-10	PRESBYTERIAN COLLEGE	w 73-27	688
FIELD GOALS-ATT	390-820	245-711	* 01-18-10	UNC ASHEVILLE	w 82-40	826
Field goal pct	.476	.345	* 01-23-10	at Charleston Southern	w 65-52	881
3 POINT FG-ATT	45-136	79-252	* 01-25-10	at Coastal Carolina	w 57-38	687
3-point FG pct	.331	.313	* 01-30-10	at High Point	w 75-62	439
3-pt FG made per game	2.8	4.9	* 02-01-10	at Radford	w 63-45	384
FREE THROWS-ATT	241-374	178-261	* 02-08-10	GARDNER-WEBB	L 56-59	833
Free throw pct	.644	.682	* 02-15-10	at Winthrop	w 52-18	560
F-Throws made per game	15.1	11.1	* 02-20-10	COASTAL CAROLINA	w 57-55	3387
REBOUNDS	632	393	* 02-22-10	CHARLESTON SOUTHERN	w 66-56	781
Rebounds per game	39.5	24.6	* 02-27-10	at UNC Asheville	w 94-66	986
Rebounding margin	+14.9	-	* 03-01-10	at Presbyterian College	w 55-40	336
ASSISTS	201	159	* 03-05-10	RADFORD	w 66-33	1136
Assists per game	12.6	9.9	* 03-08-10	HIGH POINT	w 73-48	809
TURNOVERS	289	343				
Turnovers per game	18.1	21.4				
Turnover margin	+3.4	-				
Assist/turnover ratio	0.7	0.5				
STEALS	201	115				
Steals per game	12.6	7.2				
BLOCKS	38	36				
Blocks per game	2.4	2.3				
ATTENDANCE	9017	4522				
Home games-Avg/Game	8-1127	8-565				
Neutral site-Avg/Game	-	0-0				

% = Navy Classic (Annapolis, Md.)
= Marriott Cavalier Classic (Charlottesville, Va.)
& = Advance Auto Parts Big South Championship (High Point, N.C.)
* = Big South Conference game

Score by Periods	1st	2nd	Totals
Liberty	513	553	1066
Opponents	357	390	747



2009-10 Liberty Women's Basketball
Liberty Extended Season Box Score (as of Mar 16, 2010)
All games



RECORD:	OVERALL			HOME			AWAY			NEUTRAL		
	ALL GAMES	CONFERENCE	NON-CONFERENCE	13-2	7-1	6-1	10-3	7-1	3-2	4-0	0-0	4-0

#	Player	gp-gs	min	avg	Total										pts	avg											
					fg-pts	fg%	3fg-pts	3fg%	ft-pts	ft%	reb	ast	blk	stl													
40	BROWN, Devon	32-32	888	27.8	199-407	.489	39-117	.333	105-142	.739	82	186	268	84	61	0	45	1.41	77	2.41	0.58	17	0.53	63	1.97	542	16.9
23	WARLEY, Avery	32-32	846	26.4	141-236	.597	0-1	.000	65-115	.565	121	147	268	84	91	4	13	0.41	81	2.53	0.16	25	0.78	32	1.00	347	10.8
21	MAYES, Amber	32-32	840	26.3	108-197	.548	5-9	.556	52-92	.565	12	43	55	1.7	81	3	121	3.78	104	3.25	1.16	2	0.06	75	2.34	273	8.5
11	ANTIC, Jelena	22-8	504	22.9	74-139	.532	8-18	.444	27-43	.628	56	54	110	5.0	44	1	34	1.55	48	2.18	0.71	3	0.14	22	1.00	183	8.3
15	BEECHER, Kylee	32-24	806	25.2	70-159	.440	1-12	.083	65-87	.747	61	69	130	4.1	59	0	31	0.97	58	1.81	0.53	7	0.22	24	0.75	206	6.4
32	MCLEOD, Rachel	32-32	777	24.3	54-145	.372	6-20	.300	39-52	.750	28	48	76	2.4	32	0	55	1.72	49	1.53	1.12	1	0.03	31	0.97	153	4.8
01	WASHINGTON, Lakendr	32-0	469	14.7	58-127	.457	10-40	.250	15-32	.469	17	30	47	1.5	46	1	22	0.69	54	1.69	0.41	3	0.09	43	1.34	141	4.4
12	DALE, Danika	32-0	523	16.3	47-114	.412	7-24	.292	36-59	.610	29	76	105	3.3	39	0	34	1.06	55	1.72	0.62	12	0.38	30	0.94	137	4.3
25	MORGAN, Dymond	32-0	520	16.3	46-124	.371	6-22	.273	34-54	.630	13	37	50	1.6	64	0	45	1.41	65	2.03	0.69	1	0.03	47	1.47	132	4.1
54	COY, Carra	25-0	227	9.1	8-25	.320	0-0	.000	9-20	.450	20	20	40	1.6	33	0	1	0.04	14	0.56	0.07	9	0.36	2	0.08	25	1.0
Total.....		32	6400	805-1673	.481	82-263	.312	447-696	.642	510	770	1280	400	550	9	401	12.53	627	19.59	0.64	80	2.50	369	11.53	2139	66.8	
Opponents.....		32	6400	530-1519	.349	147-532	.276	359-544	.660	322	511	833	260	605	-	341	10.66	668	20.88	0.51	61	1.91	250	7.81	1566	48.9	

Score by Periods	1st		2nd		Totals
	Liberty	Opponents	1st	2nd	
Liberty	1012	1127	2139		
Opponents	749	817	1566		



2009-10 Liberty Women's Basketball
Liberty Combined Team Statistics (as of Mar 16, 2010)
All games



RECORD:	OVERALL	HOME	AWAY	NEUTRAL
ALL GAMES	27-5	13-2	10-3	4-0
CONFERENCE	14-2	7-1	7-1	0-0
NON-CONFERENCE	13-3	6-1	3-2	4-0

#	Player	gp-gs	min	avg	Total		3-Point		F-Throw		Rebounds			pf	dq	a	to	blk	stl	pts	avg	
					fg-fga	fg%	3fg-fga	3fg%	ft-fa	ft%	off	def	tot									avg
40	BROWN, Devon	32-32	888	27.8	199-407	.489	39-117	.333	105-142	.739	82	186	268	8.4	61	0	45	77	17	63	542	16.9
23	WARLEY, Avery	32-32	846	26.4	141-236	.597	0-1	.000	65-115	.565	121	147	268	8.4	91	4	13	81	25	32	347	10.8
21	MAYS, Amber	32-32	840	26.3	108-197	.548	5-9	.556	52-92	.565	12	43	55	1.7	81	3	121	104	2	75	273	8.5
11	ANTIC, Jelena	22-8	504	22.9	74-139	.532	8-18	.444	27-43	.628	56	54	110	5.0	44	1	34	48	3	22	183	8.3
15	BEECHER, Kylee	32-24	806	25.2	70-159	.440	1-12	.083	65-87	.747	61	69	130	4.1	59	0	31	58	7	24	206	6.4
32	McLEOD, Rachel	32-32	777	24.3	54-145	.372	6-20	.300	39-52	.750	28	48	76	2.4	32	0	55	49	1	31	153	4.8
01	WASHINGTON, LaKen	32-0	469	14.7	58-127	.457	10-40	.250	15-32	.469	17	30	47	1.5	46	1	22	54	3	43	141	4.4
12	DALE, Danika	32-0	523	16.3	47-114	.412	7-24	.292	36-59	.610	29	76	105	3.3	39	0	34	55	12	30	137	4.3
25	MORGAN, Dymond	32-0	520	16.3	46-124	.371	6-22	.273	34-54	.630	13	37	50	1.6	64	0	45	65	1	47	132	4.1
54	COY, Carra	25-0	227	9.1	8-25	.320	0-0	.000	9-20	.450	20	20	40	1.6	33	0	1	14	9	2	25	1.0
Team											71	60	131									
Total.....		32	6400		805-1673	.481	82-263	.312	447-696	.642	510	770	1280	40.0	550	9	401	627	80	369	2139	66.8
Opponents.....		32	6400		530-1519	.349	147-532	.276	359-544	.660	322	511	833	26.0	605	-	341	668	61	250	1566	48.9

TEAM STATISTICS	LIBERTY	OPP	Date	Opponent	Score	Att.
SCORING	2139	1566	11-13-09	WINSTON-SALEM STATE	w 71-26	1192
Points per game	66.8	48.9	11-17-09	UNC GREENSBORO	w 60-42	786
Scoring margin	+17.9	-	% 11-20-09	vs Tulane	w 63-52	207
FIELD GOALS-ATT	805-1673	530-1519	% 11-21-09	at Navy	w 55-43	852
Field goal pct	.481	.349	11-28-09	at Lafayette	w 90-55	324
3 POINT FG-ATT	82-263	147-532	12-01-09	JAMES MADISON	L 50-60	1209
3-point FG pct	.312	.276	12-05-09	GLENVILLE STATE	w 86-45	611
3-pt FG made per game	2.6	4.6	12-15-09	at Auburn	L 64-70	1566
FREE THROWS-ATT	447-696	359-544	# 12-28-09	vs Cornell	w 70-40	452
Free throw pct	.642	.660	# 12-29-09	at Virginia	L 54-63	3096
F-Throws made per game	14.0	11.2	* 01-02-10	at Gardner-Webb	L 65-70	249
REBOUNDS	1280	833	01-05-10	NORTH CAROLINA A&T	w 57-51	365
Rebounds per game	40.0	26.0	* 01-09-10	WINTHROP	w 67-38	557
Rebounding margin	+14.0	-	01-12-10	LONGWOOD	w 78-55	460
ASSISTS	401	341	* 01-16-10	PRESBYTERIAN COLLEGE	w 73-27	688
Assists per game	12.5	10.7	* 01-18-10	UNC ASHEVILLE	w 82-40	826
TURNOVERS	627	668	* 01-23-10	at Charleston Southern	w 65-52	881
Turnovers per game	19.6	20.9	* 01-25-10	at Coastal Carolina	w 57-38	687
Turnover margin	+1.3	-	* 01-30-10	at High Point	w 75-62	439
Assist/turnover ratio	0.6	0.5	* 02-01-10	at Radford	w 63-45	384
STEALS	369	250	02-04-10	N.C. CENTRAL	w 64-44	781
Steals per game	11.5	7.8	* 02-08-10	GARDNER-WEBB	L 56-59	833
BLOCKS	80	61	* 02-15-10	at Winthrop	w 52-18	560
Blocks per game	2.5	1.9	* 02-20-10	COASTAL CAROLINA	w 57-55	3387
ATTENDANCE	14421	13071	* 02-22-10	CHARLESTON SOUTHERN	w 66-56	781
Home games-Avg/Game	15-961	13-855	* 02-27-10	at UNC Asheville	w 94-66	986
Neutral site-Avg/Game	-	4-490	* 03-01-10	at Presbyterian College	w 55-40	336
Score by Periods	1st 2nd Totals		* 03-05-10	RADFORD	w 66-33	1136
Liberty	1012 1127 2139		* 03-08-10	HIGH POINT	w 73-48	809
Opponents	749 817 1566		& 03-12-10	vs Radford	w 70-52	602
			& 03-13-10	at High Point	w 73-55	752
			& 03-14-10	vs Gardner-Webb	w 68-66	698

% = Navy Classic (Annapolis, Md.)
= Marriott Cavalier Classic (Charlottesville, Va.)
& = Advance Auto Parts Big South Championship (High Point, N.C.)
* = Big South Conference game