

**2009-10 Liberty  
Women's Basketball  
Quick Facts**

**General Information**

Name of School..... Liberty University  
City/Zip ..... Lynchburg, Va. 24502  
Founded ..... 1971  
Enrollment ..... 11,928  
Nickname ..... Lady Flames  
School Colors ..... Red, White & Blue  
Home Arena..... Vines Center  
Capacity..... 8,085  
Affiliation ..... NCAA Division I  
Conference ..... Big South  
Founder ..... Dr. Jerry Falwell  
Chancellor ..... Jerry Falwell, Jr.  
Director of Athletics..... Jeff Barber  
Athletics Dept. Phone..... (434) 582-2100

**Women's Basketball Information**

Head Coach..... Carey Green  
Alma Mater ..... Coastal Carolina, '79  
Record at School ..... 261-82 (11th Year)  
Career Record..... Same  
Assistant Coaches  
..... Alexis Sherard (St. Michael's, '93)  
..... Heather Stephens (Wyoming, '03)  
..... Andy Bloodworth (Calvin, '98)  
Certified Athletic Trainer  
..... Madeline Bosek

**History**

First Season of Basketball..... 1975-76  
All-Time Record ..... 532-410  
NCAA Tournament Appearances..... 12  
Last NCAA Appearance..... 2009  
Opponent..... Louisville  
Result ..... L/42-62 (First Round)  
Final/Highest Ranking ..... N/A  
Final 2008-09 Record ..... 24-9  
Conference Record/Finish..... 15-1/First  
Starters Returning/Lost..... 2/3  
Letterwinners Returning/Lost..... 7/7  
Newcomers..... 6

**Athletics Communications Info.**

Asst. AD - Communications  
..... Todd Wetmore  
SID Office Phone..... (434) 582-2292  
Cell Phone..... (434) 841-8974  
Email Address..... twetmore@liberty.edu  
Assoc. Director ..... Ryan Bomberger  
Cell Phone ..... (434) 221-5576  
Email Address... rbomberger@liberty.edu  
Asst. Director ..... Paul Carmany  
Cell Phone ..... (434) 221-5575  
Email Address... pjcarmany@liberty.edu  
Asst. Director ..... Eric Brown  
Cell Phone ..... (434) 221-8817  
Email Address..... eqbrown@liberty.edu  
Grad. Assistant ..... Jennifer Shelton  
Cell Phone ..... (828) 638-3876  
Email Address... jbshelton2@liberty.edu  
WBB Contact..... Paul Carmany  
Ath. Comm. Fax..... (434) 582-2076  
Website..... LibertyFlames.com

**Media Information**

**Radio**

Station ..... WWMC "The Light" (90.9 FM)  
Play-By-Play ..... Jamie Hall  
Color ..... Josh Wood

**Television**

Station ..... N/A  
Play-By-Play ..... N/A  
Color ..... N/A

**Game No. 30 - March 12, 2010**



**No. 2 seed Liberty LADY FLAMES  
(24-5, 14-2 Big South)**

**vs.**



**No. 7 seed Radford HIGHLANDERS  
(6-21, 5-11 Big South)**

**High Point, N.C. - Millis Center - 5:30 p.m. (BSC Quarterfinals)**

**The Game**

No. 2 seed Liberty (24-5, 14-2 Big South) will begin its quest for its 13th Big South title in the past 14 seasons Friday at 5:30 p.m., when the Lady Flames square off with Commonwealth rival and No. 7 seed Radford (6-21, 5-11 Big South) in the Advance Auto Parts Big South Women's Basketball Championship quarterfinals, at the Millis Center in High Point, N.C.

**Last Time Out**

Liberty closed the regular season with an impressive 73-48 victory over High Point, Monday at the Vines Center. Devon Brown led all players in both points (23) and rebounds (9), while teammate Amber Mays posted 10 points, five assists and a pair of steals on Senior Night. The Lady Flames scored 48 points in the paint and held the Panthers to 34.0 percent shooting from the field, completing a regular-season sweep of High Point.

**A Look Ahead**

If Liberty defeats Radford, the Lady Flames will advance to Saturday's semifinal round. The 3 p.m. contest would pit Liberty against the winner of Friday's fourth and final quarterfinal tilt, between No. 3 seed High Point and No. 6 seed Winthrop.

The Advance Auto Parts Big South Women's Basketball Championship title game is set for 2 p.m. on Sunday. The tournament champion will earn the Big South Conference's automatic bid to the NCAA Division I Women's Basketball Championship.

**Lady Flames On The Air**

All Lady Flames basketball games may be heard LIVE on WWMC 90.9 FM "The Light." Jamie Hall, in the midst of his 16th year of broadcasting Lady Flames basketball, is once again handling the courtside play-by-play duties for road games. Nick Pierce and Josh Wood serve as the primary commentators for home contests.

**Liberty's Probable Starters**

No.	Name	Pos.	Ht.	Yr.	PPG	RPG	Other Stats
21	Amber Mays	G	5-6	Sr.	8.2	1.6	3.9 apg
32	Rachel McLeod	G	5-10	Jr.	4.8	2.2	1.8 apg
40	Devon Brown	G	5-10	R-Fr.	16.5	8.4	1.9 spg
15	Kylee Beecher	F	6-4	So.	6.6	4.0	75.6 FT%
23	Avery Warley	F	6-3	R-So.	11.3	8.7	59.6 FG%

**Reserves**

1	LaKendra Washington	G	5-8	Fr.	4.7	1.5	1.4 spg
11	Jelena Antic	F	6-2	Fr.	8.4	5.1	1.7 apg
12	Danika Dale	G	6-1	So.	4.2	3.4	1.1 apg
25	Dymond Morgan	G	5-7	Jr.	3.8	1.5	1.6 spg
30	Brittany Campbell	G	6-0	R-Fr.	--	--	--
43	Kittery Maine	F	6-4	Jr.	--	--	--
54	Carra Coy	F	6-6	Fr.	1.1	1.7	0.4 bpg

## 2009-10 Liberty Women's Basketball Schedule/Results

**Overall: 24-5**  
**Big South: 14-2**

11/13 WINSTON-SALEM ST.\* W, 71-26  
11/17 UNC GREENSBORO^ W, 60-42

*Navy Classic (Annapolis, Md.)*

11/20 vs. Tulane W, 63-52  
11/21 at Navy W, 55-43

11/28 at Lafayette W, 90-55

12/1 JAMES MADISON^ L, 50-60  
12/5 GLENVILLE STATE^ W, 86-45  
12/15 at Auburn L, 64-70

*Marriott Cavalier Classic (Charlottesville, Va.)*

12/28 vs. Cornell W, 70-40  
12/29 at No. 21/23 Virginia L, 54-63

1/2 at Gardner-Webb\* L, 65-70  
1/5 N.C. A&T^ W, 57-51  
1/9 WINTHROP\*^ W, 67-38  
1/12 LONGWOOD^ W, 78-55  
1/16 PRESBYTERIAN\*^ W, 73-27  
1/18 UNC ASHEVILLE\*^ W, 82-40  
1/23 at Charleston So.\* W, 65-52  
1/25 at Coastal Carolina\* W, 57-38  
1/30 at High Point\* W, 75-62

2/1 at Radford\* W, 63-45  
2/4 N.C. CENTRAL^ W, 64-44  
2/8 GARDNER-WEBB\* & L, 56-59  
2/15 at Winthrop\* W, 52-18  
2/20 COASTAL CAR.\*^ W, 57-55  
2/22 CHARLESTON SO.\*^ W, 66-56  
2/27 at UNC Asheville\* W, 94-66

3/1 at Presbyterian\* W, 55-40  
3/5 RADFORD\*^ W, 66-33  
3/8 HIGH POINT\*^ W, 73-48

*Big South WBB Championship  
(High Point, N.C.)*

3/12 No. 7 seed Radford 5:30 p.m.  
3/13 Semifinals& 3 p.m.  
3/14 Championship Game& 2 p.m.

*NCAA Tournament*

3/20-21 First Round TBA  
3/22-23 Second Round TBA

**Home Games in BOLD CAPS**

\* - Big South Conference Game  
All times are Eastern Standard Time  
^ - Broadcast on  
Flames Sports Network  
& - Broadcast on SportSouth/MASN

### Team Statistical Leaders

**Total Points**

Devon Brown - 478/16.5 ppg  
Avery Warley - 328/11.3 ppg

**Total Rebounds**

Avery Warley - 252/8.7 rpg  
Devon Brown - 245/8.4 rpg

**Total Assists**

Amber Mays - 113/3.9 apg  
Rachel McLeod - 51/1.8 apg

**Total Steals**

Amber Mays - 67/2.3 spg  
Devon Brown - 55/1.9 spg

## Head Coach Carey Green

**Record at Liberty:** 261-82 (11th Year)  
**Career Record:** Same

**9 Big South Championships:** 2000, 2001, 2002, 2003, 2004, 2005, 2006, 2008, 2009  
**8 NCAA Appearances:** 2000, 2001, 2002, 2003, 2004, 2005 (Sweet 16), 2006, 2008, 2009  
**5-time Big South Coach of the Year:** 2000, 2003, 2006, 2008, 2009  
**3-time VaSID State Coach of the Year:** 2003, 2005, 2006

Liberty head women's basketball coach Carey Green, in his 11th season with the Lady Flames, has instilled quite a winning tradition during his tenure at the institution. His teams have averaged more than 23 victories per year, putting his name alongside the nation's premier women's basketball coaches.

Green has accumulated a 261-82 record on the Liberty bench, good for a winning percentage of .761. He currently ranks ninth all-time among NCAA Division I women's basketball coaches in winning percentage, ahead of renowned coaching names like Rutgers' Vivian Stringer, LSU's Van Chancellor and North Carolina's Sylvia Hatchell.

More importantly, Liberty has won the Big South Tournament title and advanced to the NCAA Tournament nine times with Green as head coach. Liberty has totaled 23 or more victories during eight of those years, including the 2004-05 season, which saw the Lady Flames reach the Sweet 16 for the first time in program history.

Green has actually been to the postseason on 21 occasions as a women's basketball coach, a span which includes a dozen years as an assistant coach at Clemson. In all but one of the 21 appearances, he has experienced the NCAA Tournament.

Last season, Green earned his unprecedented fifth Big South Coach of the Year award, after guiding a team decimated by ACL injuries to a 24-9 record and its 12th NCAA Tournament appearance in the last 13 years. The Lady Flames also won the Hokie Hardwood Classic, claiming their first-ever victory over Virginia Tech in the tournament championship game.

At season's end, Green saw his second player selected in the WNBA Draft, as Megan Frazee was taken in the second round by the San Antonio Silver Stars. She then played part of her rookie season alongside 2005 Liberty alum Katie (Feenstra) Mattera in San Antonio.

Rebounding and defense have always been staples of Green-coached teams, and the 2008-09 Lady Flames were no exception. Liberty outrebounded opponents by an average of 12.7 caroms per game, ranking second nationally. The Lady Flames have now been listed among the nation's top five teams in rebounding margin for six straight years. Liberty led the nation in the category in 2003-04 and 2004-05. The Lady Flames also ended the season ranked in the top 10 nationally for scoring defense (second, 52.6 ppg) and field goal percentage defense (sixth, .345).

A key late-season conference victory over High Point in 2006 made Green the winningest coach in Big South Conference history. He is also Liberty's career wins leader.

The 2004-05 year was a special one on Liberty Mountain, for many reasons. A senior-laden Lady Flames team recorded upset wins over No. 4 seed Penn State (78-70) and No. 5 seed DePaul (88-79) in the first two rounds of the NCAA Tournament, becoming just the second team ever to advance to the Sweet 16 as a No. 13 seed. The Lady Flames ended the season with their highest national ranking to date, No. 21 (USA Today/ESPN).

Green's track record shows he has the ability to meet those challenges. The Lady Flames have recorded two wins over UNLV, Virginia and West Virginia and solo victories over No. 19 DePaul, No. 17 Kansas State, No. 25 Penn State, Virginia Tech and Wake Forest during Green's tenure. The upset victory over No. 25 Virginia in 2003 marked Liberty's first win over a Top 25 team.

His record against conference foes is equally impressive. He led the Lady Flames on a Big South record 47-game winning streak and currently owns a .913 (168-16) winning percentage against conference teams. Green has marched through conference play with one or fewer setbacks seven times, while guiding the Lady Flames to two undefeated conference seasons.

## Big South Conference Update

(Records Updated Through 3/8)

### Overall Standings

	W	L	Pct.
Gardner-Webb	26	3	.897
<b>Liberty</b>	<b>24</b>	<b>5</b>	<b>.828</b>
Charleston So.	17	12	.586
Coastal Carolina	16	12	.571
High Point	16	13	.552
Winthrop	13	17	.433
UNC Asheville	8	21	.276
Radford	6	21	.222
Presbyterian	5	25	.167

### Conference Standings

	W	L	Pct.
#1 Gardner-Webb	15	1	.938
<b>#2 Liberty</b>	<b>14</b>	<b>2</b>	<b>.875</b>
#3 High Point	9	7	.563
#4 Charleston So.	9	7	.563
#5 Coastal Carolina	7	9	.438
#6 Winthrop	7	9	.438
#7 Radford	5	11	.313
#8 UNC Asheville	3	13	.188
Presbyterian	3	13	.188

### Upcoming Schedule

#### Big South WBB Championship All Games at High Point

#### Friday, March 12 - Quarterfinals

G1: #1 GWU vs. #8 UNCA	Noon
G2: #4 CSU vs. #5 CCU	2 p.m.
G3: #2 LU vs. #7 RU	5:30 p.m.
G4: #3 HPU vs. #6 WU	7:30 p.m.

#### Saturday, March 13 - Semifinals

G5: G1 winner vs. G2 winner	1 p.m.
G6: G3 winner vs. G4 winner	3 p.m.

#### Sunday, March 14 - Championship

G7: G5 winner vs. G6 winner	2 p.m.
-----------------------------	--------

## Scouting Radford

Radford and Liberty should be familiar with one another, after meeting on the hardwood on March 5. The Lady Flames' 66-33 victory in that contest at the Vines Center dropped the Highlanders' record to 2-13 in games played away from the Dedmon Center, their home arena, this season.

Kymesha Alston, a 6-0 forward, is the only senior on Radford's roster. She leads the Highlanders in both scoring (12.3 ppg) and rebounding (6.0 rpg) and is one of seven Big South players to rank among the conference's top 10 performers in both categories.

Denay Wood, a 5-10 junior guard, returned from injury to play in the Highlanders' season finale at Liberty. She is the team's third-leading scorer at 8.6 and leads Radford's aggressive defense with 46 steals.

The Highlanders trail only Liberty among Big South teams in steals, averaging 11.0 spg. Radford recorded a dozen thefts against the Lady Flames on March 5.

## The Coaching Matchup

Liberty Head Coach Carey Green is in his 11th season with the Lady Flames, and has led his team to nine Big South titles. A five-time Big South Coach of the Year, Green owns a 261-82 career record and is the all-time wins leader at Liberty and among Big South women's basketball coaches. His career winning percentage (.761) ranked ninth all-time among NCAA Division I women's basketball coaches at the season's outset. Green is 22-3 all-time against Radford.

Tajama Ngongba is 16-39 in her second season as a collegiate head coach. An All-American player at George Washington, Ngongba served four seasons as an assistant coach at her alma mater, prior to taking the reins at Radford a season ago. Ngongba is 0-4 all-time versus Liberty.

## Liberty-Radford Series Notes

Liberty has played Radford more often than any other opponent in program history and leads the head-to-head series, 29-23. The Lady Flames have won seven consecutive games against the Highlanders and are 28-3 in the teams' last 31 meetings.

The Lady Flames won both regular-season matchups with Radford, claiming a 63-45 decision at the Dedmon Center on Feb. 1 and doubling up the Highlanders, 66-33, March 5 at the Vines Center. Devon Brown averaged 15.0 ppg and 8.5 rpg against Radford, while Liberty outrebounded the Highlanders by an average of 16.5 boards per game and totaled 30 steals.

Radford, the only current conference member which has ever defeated Liberty in the Big South Women's Basketball Championship, is 3-2 all-time against the Lady Flames in conference tournament games.

The teams' two most recent matchups at the Big South Championship have both been decided at the final buzzer. Radford's Kelli Darden banked in the game-winning shot to defeat Liberty, 57-55, in the 2007 Big South semifinals, halting the Lady Flames' run of 10 straight conference titles.

The next year, Megan Frazee's shot with 0.3 seconds left gave Liberty a dramatic 66-65 championship game victory over the Highlanders.

## Liberty.....Statistical Comparison..... Radford

24-5 .....	Record .....	6-21
47.7 .....	Field Goal Percentage .....	36.2
34.3 .....	Opponent Field Goal Percentage .....	41.6
31.0 .....	Three-Point Field Goal Percentage .....	30.0
2.6 .....	Three-Pointers Made Per Game .....	3.3
64.5 .....	Free Throw Percentage .....	63.3
40.4 .....	Rebound Average .....	35.1
25.7 .....	Opponent Rebound Average .....	40.7
+14.8 .....	Rebound Differential .....	-5.6
66.5 .....	Points Per Game .....	55.6
48.0 .....	Points Allowed Per Game .....	63.9
+18.4 .....	Point Differential .....	-8.3





## Liberty in the Big South Championship

### 1992 (No. 3 seed)

QF - Def. #6 Coastal Carolina, 78-65  
SF - Lost to #2 Campbell, 68-73

### 1993 (No. 6 seed)

QF - Def. #3 Campbell, 66-57  
SF - Lost to #2 Radford, 62-70

### 1994 (No. 6 seed)

QF - Lost to #3 Radford, 70-80

### 1995 (No. 7 seed)

QF - Lost to #2 Towson, 69-77

### 1996 (No. 8 seed)

QF - Lost to #1 UNC Greensboro, 40-84

### 1997 (No. 2 seed)

QF - Def. #7 Coastal Carolina, 71-61  
SF - Def. #6 Winthrop, 63-50  
F - Def. #1 UNC Greensboro, 89-82

### 1998 (No. 1 seed)

SF - Def. #4 Charleston Southern, 64-54  
F - Def. #6 UNC Asheville, 65-53

### 1999 (No. 1 seed)

SF - Def. #4 Charleston Southern, 70-55  
F - Def. #2 Coastal Carolina, 68-55

### 2000 (No. 1 seed)

QF - Def. #8 High Point, 67-49  
SF - Def. #5 Elon, 66-51  
F - Def. #3 Coastal Carolina, 74-64

### 2001 (No. 1 seed)

QF - Def. #8 UNC Asheville, 57-49  
SF - Def. #4 High Point, 74-55  
F - Def. #2 Elon, 52-47

### 2002 (No. 1 seed)

QF - Def. #8 UNC Asheville, 76-52  
SF - Def. #5 Charleston Southern, 54-41  
F - Def. #7 Coastal Carolina, 57-33

### 2003 (No. 1 seed)

QF - Def. #8 UNC Asheville, 70-39  
SF - Def. #5 Coastal Carolina, 78-68  
F - Def. #3 High Point, 84-71

### 2004 (No. 1 seed)

QF - Def. #8 Winthrop, 81-47  
SF - Def. #5 Radford, 82-59  
F - Def. #7 Birmingham-Southern, 54-41

### 2005 (No. 1 seed)

QF - Def. #8 Winthrop, 83-36  
SF - Def. #4 Birmingham-So., 80-44  
F - Def. #3 UNC Asheville, 88-41

### 2006 (No. 1 seed)

QF - Def. #8 Charleston Southern, 62-46  
SF - Def. #4 Winthrop, 53-45  
F - Def. #2 High Point, 53-50

### 2007 (No. 3 seed)

QF - Def. #6 Birmingham-So., 70-58  
SF - Lost to #2 Radford, 55-57

### 2008 (No. 1 seed)

SF - Def. #4 High Point, 80-43  
F - Def. #2 Radford, 66-65

### 2009 (No. 1 seed)

QF - Def. #8 Charleston Southern, 74-64  
SF - Def. #4 Winthrop, 61-42  
F - Def. #6 Gardner-Webb, 51-50

**All-Time Tournament Record:** 36-6

### Liberty Versus ...

Charleston Southern.....	5-0
Coastal Carolina.....	6-0
Gardner-Webb.....	1-0
High Point.....	5-0
Radford.....	2-3
UNC Asheville.....	5-0
Winthrop.....	5-0

## How's This For Openers?

Liberty is 15-3 all-time in its opening game of the Big South Championship. The Lady Flames have won 13 straight openers, since losing to UNC Greensboro, 84-40, in the first round of the 1996 tournament.

## Breaking it Down by Location

Liberty is 17-0 in Big South Championship contests played at home, 0-1 on the road and 19-5 when games are played at neutral sites. The Lady Flames' lone road contest was a 70-62 setback at Radford in the 1993 semifinal round.

## This Brings Back Memories

Liberty enters the Big South Championship as the No. 2 seed for only the second time in program history. The last time the Lady Flames were seeded No. 2, they captured their first-ever Big South Championship title in 1997, upsetting top seed UNC Greensboro in the championship game.

All-time, Liberty has been seeded No. 1 11 times, No. 2 twice, No. 3 twice, No. 6 twice, No. 7 once and No. 8 once. The Lady Flames have never won the tournament championship when seeded No. 3 or lower.

## Success Versus Current Big South Teams

Liberty is 29-3 in Big South Championship games against the seven other teams currently eligible for the tournament. Radford is the only current conference member which has ever defeated the Lady Flames in the tournament, doing so in 1993, 1994 and 2007.

## Avoiding the Upset

The Lady Flames own a 34-0 record all-time in the Big South Championship, when the Lady Flames are seeded higher than their opponents.

## Commonwealth Teams in the Championship Game

Either Liberty or Radford has appeared in all 23 Big South Championship title games in conference history. However, 2008 is the only time the Lady Flames and Highlanders have ever faced each other in the championship game.

## A Positive Omen?

Liberty's 73-48 home win over High Point on Monday marked the 11th time in the last 13 seasons, the Lady Flames have closed the regular season with a victory. Liberty has gone on to capture the Big South Championship crown each of the last 10 times it won its final regular-season tilt.

## Lack of Overtime

None of Liberty's 42 Big South Championship contests have gone to overtime. Most of the time, the games have been decided by a wide margin, as 30 of the Lady Flames' tournament tilts have featured a double-digit spread between the two teams.

## A Look Back

Liberty, the No. 1 seed for the 2009 Big South Women's Basketball Championship at the Millis Center, defeated No. 8 seed Charleston Southern, 74-64, in the quarterfinals. Megan Frazee's 26 points and 11 rebounds helped the Lady Flames stave off a furious second-half comeback attempt by the Buccaneers.

Megan Frazee starred again the following day, contributing 28 points and 13 caroms to the Lady Flames' 61-42 semifinal triumph over No. 3 seed Winthrop. The Lady Flames won the rebounding battle, 41-15, and limited the Eagles to 34.1 percent shooting from the field.

For the second straight year, the championship game went down to the wire. Liberty led No. 6 seed Gardner-Webb by 10 points in the second half, but hung on for a 51-50 victory when Dominique Hudson's shot careened off the rim in the closing seconds. Megan Frazee wrapped up tournament MVP honors with 12 points and seven rebounds, but received major support from Rachel Hammond (team-high 13 points) and Avery Warley (game-high 17 rebounds) in the championship tilt.

**Liberty Players In The Big South Championship**

**#12 Danika Dale**  
 Games.....2  
 PPG.....1.0  
 RPG.....0.0

**#15 Kylee Beecher**  
 Games.....1  
 PPG.....0.0  
 RPG.....2.0

**#21 Amber Mays**  
 Games.....3  
 PPG.....4.3  
 RPG.....4.0

**#23 Avery Warley**  
 Games.....3  
 PPG.....6.3  
 RPG.....12.0

**#32 Rachel McLeod**  
 Games.....5  
 PPG.....4.4  
 RPG.....1.4

**#43 Kittery Maine**  
 Games.....4  
 PPG.....2.5  
 RPG.....1.5

**Liberty's All-Tournament Selections**

Ginny Coleman.....1993  
 Allyson Fasnacht.....2006  
 Katie Feenstra ..2002, 2003, 2004, 2005  
 Megan Frazee .....2007, 2008, 2009  
 Molly Frazee .....2008  
 Moriah Frazee .....2009  
 Michelle Fricke.....2001  
 Rachel Hammond.....2006  
 Wendy Johnson.....1992  
 Elena Kisseleva 1997, 1998, 1999, 2000  
 Rima Margeviciute.....2005  
 Kristina Palaimaite.....2001, 2004  
 Daina Staugaitiene .....2005  
 Kristal Tharp .....2002, 2003  
 Jeri Wiley.....1992  
 Sarah Wilkerson1997, 1998, 1999, 2000  
 Sharon Wilkerson .....1997, 1998, 1999  
 Rachel Young .....2001

**Liberty's Tournament MVPs**

Allyson Fasnacht .....2006  
 Katie Feenstra .....2003, 2004, 2005  
 Megan Frazee .....2008, 2009  
 Michelle Fricke.....2001  
 Elena Kisseleva .....1997, 1999, 2000

**Liberty's All-Time Tournament Record as the ...**

No. 1 seed .....30-0  
 No. 2 seed .....3-0  
 No. 3 seed .....2-2  
 No. 4 seed .....0-0  
 No. 5 seed .....0-0  
 No. 6 seed .....1-2  
 No. 7 seed .....0-1  
 No. 8 seed .....0-1  
 Favorite (by seed).....34-0  
 Underdog (by seed).....2-6  
 Quarterfinals .....12-3  
 Semifinals .....12-3  
 Championship Game.....12-0  
 Games Decided by 1-5 pts.....4-2  
 Games Decided by 6-10 pts.....9-3  
 Games Decided by 11+ pts.....23-1

**Big South Championship Participant Capsules**

**#1 Gardner-Webb Bulldogs (26-3, 15-1 Big South)**  
**Coach (Record at GWU/Career Record):** Rick Reeves (87-87/360-325)  
**Leading Scorer:** Courtney Epps, 12.8 ppg  
**Leading Rebounder:** Margaret Roundtree, 6.7 rpg  
**Big South Championship Record/Best Finish:** 2-1/2nd (2009)  
**Last Year's Result:** Lost to Liberty in championship game, 51-50  
**All-Time Record Vs. Liberty (Big South Championship):** 2-3 (0-1)

**#3 High Point Panthers (16-13, 9-7 Big South)**  
**Coach (Record at HPU/Career Record):** Tooley Loy (146-114/Same)  
**Leading Scorer:** Shamia Brown, 10.1 ppg  
**Leading Rebounder:** Ashlee' Samuels, 6.8 rpg  
**Big South Championship Record/Best Finish:** 8-10/2nd (2003, 2006)  
**Last Year's Result:** Lost to Gardner-Webb in semifinals, 78-76  
**All-Time Record Vs. Liberty (Big South Championship):** 9-25 (0-5)

**#4 Charleston Southern Buccaneers (17-12, 9-7 Big South)**  
**Coach (Record at CSU/Career Record):** Julie Goodenough (47-72/257-187)  
**Leading Scorer:** Katie Tull, 14.8 ppg  
**Leading Rebounder:** Ali Schwagmeyer, 7.3 rpg  
**Big South Championship Record/Best Finish:** 9-23/Semis (Eight times)  
**Last Year's Result:** Lost to Liberty in first round, 74-64  
**All-Time Record Vs. Liberty (Big South Championship):** 5-42 (0-5)

**#5 Coastal Carolina Chanticleers (16-12, 7-9 Big South)**  
**Coach (Record at CCU/Career Record):** Alan LeForce (191-176/431-352)  
**Leading Scorer:** Sydnei Moss, 14.9 ppg  
**Leading Rebounder:** Sydnei Moss, 6.2 rpg  
**Big South Championship Record/Best Finish:** 13-23/2nd (1999, 2000, 2002)  
**Last Year's Result:** Lost to Winthrop in quarterfinals, 67-48  
**All-Time Record Vs. Liberty (Big South Championship):** 7-43 (0-6)

**#6 Winthrop Eagles (13-17, 7-9 Big South)**  
**Coach (Record at WU/Career Record):** Bud Childers (71-112/446-351)  
**Leading Scorer:** Shanice Cole, 12.2 ppg  
**Leading Rebounder:** Shanice Cole, 6.9 rpg  
**Big South Championship Record/Best Finish:** 11-23/2nd (1996)  
**Last Year's Result:** Lost to Liberty in semifinals, 61-42  
**All-Time Record Vs. Liberty (Big South Championship):** 7-39 (0-5)

**#7 Radford Highlanders (6-21, 5-11 Big South)**  
**Coach (Record at RU/Career Record):** Tajama Ngongba (16-39/Same)  
**Leading Scorer:** Kymesha Alston, 12.3 ppg  
**Leading Rebounder:** Kymesha Alston, 6.0 rpg  
**Big South Championship Record/Best Finish:** 32-14/1st (Nine times)  
**Last Year's Result:** Lost to Gardner-Webb in quarterfinals, 61-50  
**All-Time Record Vs. Liberty (Big South Championship):** 23-29 (3-2)

**#8 UNC Asheville Bulldogs (8-21, 3-13 Big South)**  
**Coach (Record at UNCA/Career Record):** Betsy Blose (106-130/220-207)  
**Leading Scorer:** Lindsey Montgomery, 12.3 ppg  
**Leading Rebounder:** Lindsey Montgomery, 10.1 rpg  
**Big South Championship Record/Best Finish:** 9-22/1st (2007)  
**Last Year's Result:** Lost to High Point in quarterfinals, 72-67  
**All-Time Record Vs. Liberty (Big South Championship):** 7-40 (0-5)

## NCAA Top 25 Polls

### AP Top 25

1) Connecticut (31-0).....	1,000 pts.
2) Stanford (28-1) .....	959
3) Nebraska (29-0) .....	920
4) Tennessee (30-2) .....	880
5) Xavier (26-3).....	821
6) Notre Dame (27-4) .....	770
7) Duke (27-5) .....	764
8) Ohio State (30-4).....	734
9) West Virginia (27-4).....	669
10) Florida State (26-5) .....	616
11) Texas A&M (22-7) .....	588
12) Oklahoma (21-9) .....	553
13) Georgetown (25-6) .....	457
14) Iowa State (23-6).....	431
15) Texas (21-9) .....	415
16) Baylor (22-8).....	382
17) St. John's (24-6).....	373
18) Gonzaga (26-4) .....	346
19) Kentucky (25-7).....	324
20) Oklahoma State (21-9).....	203
21) Hartford (27-3).....	187
22) LSU (20-9).....	113
23) UCLA (22-7) .....	107
24) Georgia (23-8).....	86
25) Michigan State (22-9).....	44

### 2009-10 Opponents in Bold

### ESPN/USA Today Coaches Top 25

1) Connecticut (32-0).....	750 pts.
2) Stanford (28-1) .....	716
3) Nebraska (29-0) .....	694
4) Tennessee (30-2) .....	659
5) Xavier (27-3).....	628
6) Duke (27-5) .....	584
7) Notre Dame (27-5) .....	566
8) West Virginia (28-4).....	528
9) Ohio State (30-4).....	520
10) Florida State (26-5) .....	444
11) Texas A&M (22-7) .....	421
12) Oklahoma (21-9) .....	396
13) Georgetown (25-6) .....	387
14) Iowa State (23-6).....	359
15) Gonzaga (27-4) .....	298
16) Kentucky (25-7) .....	276
17) St. John's (24-6).....	272
18) Baylor (22-8).....	252
19) Hartford (27-3).....	192
20) Texas (21-9) .....	181
21) Oklahoma State (21-9).....	176
<b>22) Virginia (21-9).....</b>	<b>115</b>
23) UCLA (22-7) .....	95
24) Michigan State (22-9).....	50
25) Middle Tennessee (24-5).....	24

### 2009-10 Opponents in Bold

## Liberty Versus the Big South Conference

Liberty has enjoyed a considerable amount of success versus Big South Conference opposition, since joining the league for the 1991-92 season. The Lady Flames have won the conference tournament 12 times and captured 11 regular-season championships.

Liberty is 241-69 (.777) all-time against Big South opponents, including 205-63 in regular-season matchups and 36-6 in Big South Championship tilts. During Carey Green's tenure as head coach, the Lady Flames are 168-16 (.913) when facing Big South foes.

### Marvelous in March

Liberty has gone 39-12 during the month of March under Carey Green, with nine of the setbacks coming in the NCAA Tournament. The Lady Flames are 12-2 in the regular season, 25-1 in the Big South Championship and 2-9 in the "Big Dance" during the year's third month, under his direction. This season, the Lady Flames are 3-0 to start the calendar year's third month.

The Lady Flames are 47-37 all-time in March contests and did not pick up their first victory in the month until the program's 13th season. Liberty's initial March triumph was an 82-69 win over Randolph-Macon on March 3, 1988.

### Tearing it Up in Tournaments

Avery Warley has excelled in tournament games during her career, collecting 144 rebounds in 15 tournament tilts, for an average of 9.6 rpg. She grabbed a career-high 18 boards against Virginia Tech in the championship game of the 2008 Hokie Hardwood Classic and posted 12.0 rpg during the 2009 Big South Championship.

Warley has earned all-tournament honors at the 2008 Hokie Hardwood Classic and the 2009 Marriott Cavalier Classic.

### Who Will Get There First?

Senior Amber Mays and redshirt freshman Devon Brown are both approaching the 500-point milestone for their respective careers. Earlier this season, Avery Warley became the 50th Lady Flame ever to tally 500 career points.

Mays enters the Big South Championship with 483 points, while Brown has posted 478 points in her rookie season, the second-most points ever scored by a Liberty freshman.

### T.G.I.F.

Liberty is 3-0 in Friday games this season, winning the contests over Winston-Salem State (Nov. 13), Tulane (Nov. 20) and Radford (March 5) by an average of 29.7 ppg. The victory over Tulane at the Navy Classic was one of the Lady Flames' most impressive wins of the Year. The Green Wave went on to capture the Conference USA regular-season championship.

### Stealing a Win

Liberty's aggressive, trapping defense has produced a Big South-leading 338 steals this season, giving the Lady Flames a chance to break the program record of 377 steals, set in 1979-80.

The Lady Flames' magic number for steals is 11. Liberty is 18-0 when tallying at least 11 steals in a game this season, but only 6-5 when recording 10 or fewer thefts.

### Bench Bunch

Since Jelena Antic returned from injury on Feb. 20, the Liberty bench is posting 22.5 ppg. The Lady Flames are 15-1 this year when scoring the most bench points in a game.

### Scoring Outburst

Liberty's 94 points scored at UNC Asheville on Feb. 27 were a season high and marked the 11th time in head coach Carey Green's 11 seasons at the helm that the Lady Flames have tallied at least 90 points.

The Lady Flames' point total was their second-highest output ever in a Big South Conference game. Liberty's all-time high against a Big South foe came in a 99-42 home win over Charleston Southern on Feb. 18, 2008.



**Liberty in the  
Big South Stats**  
(Through Games of 3/8)

**Team**

Scoring Offense (4th) .....	66.5 ppg
Scoring Defense (1st) .....	48.0 ppg
Scoring Margin (1st) .....	+18.4 ppg
Free Throw Pct. (6th) .....	.645
Field Goal Pct. (1st) .....	.477
Field Goal Pct. Defense (1st) ..	.343
3-Pt. FG Pct. (5th) .....	.310
3-Pt. FG Pct. Defense (1st) .....	.277
3-Pt. FG Made (9th) .....	2.6/game
Rebounds (1st) .....	40.4 rpg
Opp. Rebounds (1st) .....	25.7 rpg
Rebounding Margin (1st) .....	+14.8 rpg
Offensive Rebounds (1st) ..	16.3 rpg
Defensive Rebounds (6th) ..	24.1 rpg
Blocked Shots (7th) .....	2.5 bpg
Assists (3rd) .....	12.9 apg
Steals (1st) .....	11.7 spg
Turnover Margin (5th) .....	+1.48
Asst./TO Ratio (3rd) .....	0.65

**Individual**

**Scoring**

Devon Brown (1st) .....	16.5 ppg
Avery Warley (10th) .....	11.3 ppg
Amber Mays (25th) .....	8.2 ppg

**Rebounding**

Avery Warley (2nd) .....	8.7 rpg
Devon Brown (3rd) .....	8.4 rpg

**Offensive Rebounds**

Avery Warley (2nd) .....	4.0 rpg
Devon Brown (7th) .....	2.6 rpg
Kylee Beecher (14th) .....	1.9 rpg

**Defensive Rebounds**

Devon Brown (1st) .....	5.9 rpg
Avery Warley (4th) .....	4.7 rpg

**Field Goal Pct.**

Avery Warley (1st) .....	.596
Devon Brown (4th) .....	.488

**Assists**

Amber Mays (3rd) .....	3.9 apg
------------------------	---------

**Free Throw Pct.**

Devon Brown (7th) .....	.717
-------------------------	------

**Steals**

Amber Mays (3rd) .....	2.3 spg
Devon Brown (9th) .....	1.9 spg
Dymond Morgan (14th) .....	1.6 spg

**Three-Point FG Made**

Devon Brown (T-10th) .....	1.2/game
----------------------------	----------

**Blocked Shots**

Avery Warley (8th) .....	0.8 bpg
Devon Brown (15th) .....	0.5 bpg

**Closing the Season in Style**

Liberty swept the season's final Big South Conference weekly honors on Monday, with Avery Warley earning Big South Player of the Week laurels and Jelena Antic taking home Big South Freshman of the Week honors.

Warley is the fourth Big South player to capture the Player of the Week award multiple times this season, while Antic is the second conference player to win three Freshman of the Week honors in 2009-10. Antic is also Liberty's first three-time Freshman of the Week honoree since Kristal Tharp in 2001-02.

**The Game is Decided by the Opening Tip**

In a bit of a statistical oddity, Liberty is a perfect 18-0 when Avery Warley wins the opening tip this season.

**Climbing the Freshman Charts**

Devon Brown is fashioning one of the best freshman seasons in program history. She ranks among Liberty's top five in both freshman points and freshman rebounds.

Brown's Big South-high 478 points are the second-most ever scored by a Lady Flames rookie. Elena Kisseleva tops the list, with her 648 points in 1996-97.

The Waynesboro, Va., native also sits fourth in rebounds among Liberty freshmen, with 245 caroms. The top three spots are occupied by Cheri Yates (267 rebounds in 1988-89), teammate Avery Warley (256 in 2008-09) and Elena Kisseleva (248 in 1996-97).

**Halfway to 1,000/1,000**

Avery Warley reached a career milestone during the Feb. 15 game at Winthrop. With her putback hoop 13:42 before halftime, Warley became the 50th player in program to score 500 career points.

Warley then became the 21st Lady Flame ever to grab 500 career rebounds, with her defensive board with 9:31 left in a March 5 win over Radford. The redshirt sophomore is now more than halfway to becoming Liberty's third member of the 1,000/1,000 club.

**National Leader**

Liberty, which has outrebounded 28 of its 29 opponents this season, ranks as the nation's No. 1 team in rebound margin, including games played through March 7. The Lady Flames, who own a +14.8 rebound margin, have ranked among the nation's top five rebounding squads for six consecutive seasons. Liberty led the nation in rebound margin in back-to-back years, 2003-04 and 2004-05.

**First-Half Defense**

Points have come at a premium for Liberty's opponents during the first half this season. The Lady Flames limited Radford to 17 first-half markers on March 5, the 10th time Liberty has held its opponent under 20 points in the opening period. The Lady Flames have gone on to win all 10 contests.

Only four of Liberty's first 29 opponents have scored 30 points or more during the opening 20 minutes of play. The Lady Flames are yielding an average of just 23.2 points in the first half of games in 2009-10.

**No Triples? No Problem**

Liberty did not make a three-pointer during its win over Radford on March 5, shooting 0-4 from behind the arc. It was the 11th time this season that the Lady Flames have connected on one or fewer triples in a contest. Liberty is 10-1 in those games, despite its lack of three-point shooting.

**70 is the Magic Number**

Liberty is 10-0 this season when scoring at least 70 points in a game, extending a lengthy streak. The Lady Flames have now won 92 consecutive games when reaching the 70-point plateau offensively.

No. 24 Boston College was the most recent team to defeat Liberty when the Lady Flames tallied 70 points. The Eagles dealt the Lady Flames a 74-70 overtime loss, Dec. 6, 2003 at the Brown Classic.

## Miscellaneous Stats For the 2009-10 Lady Flames

### Team Scoring Leaders

Devon Brown	16 times
Avery Warley	8 times
Jelena Antic	3 times
Amber Mays	3 times
Kylee Beecher	1 time
Danika Dale	1 time
LaKendra Washington	1 time

### 20-Point Games

Devon Brown	8 times
Avery Warley	3 times
LaKendra Washington	1 time

### Team Rebounding Leaders

Devon Brown	14 times
Avery Warley	13 times
Jelena Antic	3 times
Danika Dale	1 time

### 10-Rebound Games

Avery Warley	13 times
Devon Brown	11 times
Jelena Antic	2 times

### Team Assist Leaders

Amber Mays	19 times
Rachel McLeod	7 times
Jelena Antic	5 times
Devon Brown	4 times
Dymond Morgan	4 times
Danika Dale	2 times
Kylee Beecher	1 time
Avery Warley	1 time

### 5-Assist Games

Amber Mays	10 times
Dymond Morgan	3 times
Rachel McLeod	1 time

### Team Steal Leaders

Amber Mays	12 times
Devon Brown	11 times
LaKendra Washington	8 times
Dymond Morgan	7 times
Kylee Beecher	3 times
Rachel McLeod	3 times
Avery Warley	3 times
Danika Dale	2 times
Jelena Antic	1 time

### 3-Steal Games

Amber Mays	12 times
Devon Brown	11 times
Dymond Morgan	9 times
LaKendra Washington	8 times
Jelena Antic	3 times
Danika Dale	3 times
Avery Warley	3 times
Rachel McLeod	2 times
Kylee Beecher	1 time

### Team Blocked Shot Leaders

Avery Warley	14 times
Devon Brown	10 times
Danika Dale	6 times
Carra Coy	5 times
Kylee Beecher	3 times
Jelena Antic	2 times
LaKendra Washington	2 times
Amber Mays	1 time

### 3-Block Games

Avery Warley	3 times
--------------	---------

*Including Ties*

## Seven-Game Winning Streak

Liberty has won seven straight games, marking its third winning streak of at least five games this season. The Lady Flames have only trailed for a total of 8:05 during the streak.

Defense has keyed the winning streak, as evidenced by Liberty's 45.1 ppg allowed. The Lady Flames have also averaged 13.0 steals per contest.

Individually, Avery Warley is shooting 64.9 percent from the field, with 13.7 ppg and 9.6 rpg during the six-game winning skein.

## Dominating Defensive Effort

The Lady Flames enjoyed a record-setting defensive performance Feb. 15 at Winthrop. Liberty established new program records for fewest points allowed (18) and lowest opponent field goal percentage (.119) during its 52-18 triumph.

Liberty also came just two points away from equaling the fewest points ever allowed in a game between two Division I women's basketball teams.

## Big Wins, Tight Losses

The Lady Flames' 24 victories this season have come by an average of 23.7 points. Liberty's tightest win was a 57-55 home victory over Coastal Carolina on Feb. 20.

Meanwhile, Liberty has lost its five games by a total of 33 points. James Madison posted the widest margin of victory over the Lady Flames, defeating Liberty 60-50, Dec. 1 at the Vines Center.

## Double-Double x 2

Before Jan. 12, the Lady Flames had not seen a pair of players record double-doubles in the same game since Nov. 24, 2007. However, Liberty has accomplished the feat five times in its last 16 games.

**Longwood (Jan. 12):** Jelena Antic (19 pts., 10 rebs.) & Devon Brown (16 pts., 13 rebs.)  
**Coastal Carolina (Jan. 25):** D. Brown (17 pts., 10 rebs.) & A. Warley (15 pts., 12 rebs.)  
**High Point (Jan. 30):** Devon Brown (29 pts., 11 rebs.) & Avery Warley (26 pts., 14 rebs.)  
**Gardner-Webb (Feb. 8):** D. Brown (13 pts., 13 rebs.) & A. Warley (15 pts., 10 rebs.)  
**Charleston So. (Feb. 22):** D. Brown (20 pts., 12 rebs.) & A. Warley (22 pts., 10 rebs.)

## Wanted for Theft

Liberty has employed an aggressive, trapping defense this season, helping the Lady Flames pace the Big South with 11.7 steals per contest. Liberty has tallied double-digit steals 21 times in its first 29 games of the year, after doing so only nine times during the entire 2008-09 campaign. Leading the way is senior Amber Mays, who has accounted for 67 of the Lady Flames' 338 thefts.

## The Container is Half Full

This season, the Lady Flames are 12-0, when shooting 50 percent or higher from the field. Liberty is now 71-0 under head coach Carey Green, when the Lady Flames sink at least half of their field goals.

## Painting a Masterpiece

Last season, Liberty regularly controlled the area around the basket, outscoring 29 of 33 opponents in the "points in the paint" statistical category.

This year, the Lady Flames are off to an outstanding start in racking up "points in the paint" once again. Liberty has outscored all 29 opponents inside the paint in 2009-10, by an average margin of 25 points (40.1 to 15.1).

## 18 x 10 for No. 40

Redshirt freshman Devon Brown scored a game-high 23 points during Monday's game versus High Point, putting her in double figures for the 18th straight game. Gardner-Webb was the last opponent to hold the Big South's leading scorer under 10 points, limiting Brown to nine tallies on Jan. 2.

2009 graduate Megan Frazee set the school record by scoring in double figures 68 straight times (Jan. 27, 2007 through March 15, 2009).



## Liberty's Record ...

When Liberty controls the tip .....	18-0
When opponent controls the tip.....	6-5
Played at home.....	13-2
Played on the road .....	9-3
Played at a neutral site.....	2-0
Played a team with a .500+ record.....	11-5
Played a team with a .500 record.....	2-0
Played a team with a below .500 record.....	11-0
When Liberty leads at the half.....	21-1
When opponent leads at the half.....	3-3
When there is a tie at the half.....	0-1
When Liberty leads with 5:00 left.....	24-1
When opponent leads with 5:00 left .....	0-4
When there is a tie with 5:00 left .....	0-0
When Liberty leads with 1:00 left.....	24-0
When opponent leads with 1:00 left .....	0-4
When there is a tie with 1:00 left .....	0-1
When Liberty outrebounds opponent .....	24-4
When opponent outrebounds Liberty .....	0-1
When the teams' rebound totals are equal...	0-0
When Liberty shoots 50% or better (FG)....	12-0
When Liberty shoots less than 50% (FG)...	12-5
When Liberty outshoots its opponents .....	21-2
When opponents outshoot Liberty .....	3-3
When the teams shoot the same pct.....	0-0
When Liberty shoots more 3-pointers.....	4-1
When opponent shoots more 3-pointers .....	20-4
When same amount of 3-pointers shot.....	0-0
When Liberty shoots more free throws.....	21-1
When opponent shoots more free throws.....	2-4
When same number of free throws taken.....	1-0
When opponent shoots 50% or better (FG)...	0-1
When opponent shoots less than 50% (FG)...	24-4
When Liberty has more turnovers .....	7-3
When opponent has more turnovers .....	13-2
When turnovers are the same .....	4-0
When Liberty blocks more shots .....	12-2
When opponent blocks more shots .....	6-2
When blocks are the same .....	6-1
When Liberty has more steals .....	20-4
When opponent has more steals.....	3-1
When steals are the same.....	1-0
When Liberty bench outscores opponent...	15-1
When opponent bench outscores Liberty .....	9-4
When both benches score the same.....	0-0
When Liberty scores 50 or fewer points .....	0-1
When Liberty scores 51-60 points.....	7-2
When Liberty scores 61-70 points .....	8-2
When Liberty scores 71-80 points .....	5-0
When Liberty scores 81 or more points.....	4-0
When the game is decided by 1-5 points .....	1-2
When the game is decided by 6-10 points .....	2-3
When the game is decided by 11+ points.....	21-0
November Games .....	5-0
December Games .....	2-3
January Games .....	8-1
February Games.....	6-1
March Games .....	3-0
Sunday .....	0-0
Monday .....	8-1
Tuesday.....	3-3
Wednesday.....	0-0
Thursday.....	1-0
Friday.....	3-0
Saturday .....	9-1
When wearing white uniforms .....	15-2
When wearing red uniforms.....	2-0
When wearing blue uniforms.....	7-3

## All-Time Winningest Coaches

Through 10 seasons at Liberty, head coach Carey Green remains in elite company. He ranks as the ninth-winningest NCAA Division I women's basketball coach of all time, entering the 2009-10 campaign with a .755 career winning percentage. Here is a look at the top 15 coaches on the all-time list.

Coach, Team(s)	Yrs.	Won	Lost	Pct.
1) Leon Barmore, Louisiana Tech	20	576	87	.867
2) Geno Auriemma, Connecticut	24	696	122	.851
3) Pat Summitt, Tennessee	35	1,005	193	.839
4) Tara VanDerveer, Idaho, Ohio St., Stanford	30	757	193	.797
5) Bill Sheahan, Mt. St. Mary's	17	372	104	.782
6) Robin Selvig, Montana	31	725	204	.780
7) Gail Goestenkors, Duke, Texas	17	439	124	.780
8) Wes Moore, Maryville, F. Marion, Chattanooga	20	466	132	.779
<b>9) Carey Green, Liberty</b>	<b>10</b>	<b>237</b>	<b>77</b>	<b>.755</b>
10) Andy Landers, Georgia	30	725	239	.752
11) Marsha Sharp, Texas Tech	24	571	189	.751
12) C. Vivian Stringer, Cheyney, Iowa, Rutgers	38	825	280	.747
13) Jody Conradt, Sam Houston St., UTA, Texas	38	900	309	.744
14) Sylvia Hatchell, F. Marion, North Carolina	34	812	282	.742
15) Van Chancellor, Mississippi, LSU	21	489	171	.741

## Longest-Tenured Assistant Coaches

The 2009-10 season is Heather Stephens' seventh campaign as an assistant coach on Carey Green's coaching staff. This season, she snapped a tie with Jeri (Wiley) Porter as the longest-tenured assistant coach in Liberty women's basketball history. Porter is now the head coach at George Mason.

The Lady Flames have gone 170-50 and won five Big South titles during Stephens' tenure and made the "Sweet 16" of the 2005 NCAA Tournament.

## Same Number, New Face

A new Lady Flame is wearing No. 40 this year, after Megan Frazee donned the number for the last four seasons. Among many other accomplishments and accolades, Frazee graduated as the No. 2 scorer (1,883 points) and No. 3 rebounder (951 rebounds) in program history, leaving some very big shoes to fill.

Liberty's new No. 40, Devon Brown, has worn the number proudly so far. The redshirt freshman from Waynesboro, Va. is averaging a Big South-high 16.5 ppg and 8.4 rpg. No freshman has finished the year as the conference's leading scorer since Liberty's Elena Kisseleva in 1996-97.

## Tallest Since Feenstra

Carra Coy, one of three new freshmen on this year's team, stands 6-6. That makes the Summerville, S.C., native the tallest Lady Flame since 6-8 Katie Feenstra graduated after the 2004-05 campaign.

## International Flavor

Freshman Jelena Antic hails from Skopje, Macedonia and sophomore Tolu Omotola was born in London, England, giving Liberty international players on its roster for the 16th consecutive season. The last time the Lady Flames' roster consisted solely of American-born players was the 1993-94 campaign. Every Carey Green-coached team at Liberty has featured at least one international player.

## Local Flavor

Even though Jelena Antic was born in Macedonia, she played high school basketball at Liberty Christian Academy in Lynchburg, Va. She is one of four current Lady Flames who attended high school within 70 miles of the Liberty campus, joining Kylee Beecher (Hidden Valley), Devon Brown (Waynesboro) and Brittany Campbell (Brookville).

## Top 50 Scorers in Liberty History

1. Elena Kisseleva	2,154
2. Megan Frazee	1,883
3. Katie Feenstra	1,845
4. Sharon Wilkerson	1,733
5. Sarah Wilkerson	1,331
6. Ginny Holloway	1,180
7. Sharon Snodgrass	1,169
8. Kristal Tharp	1,161
9. Moriah Frazee	1,147
10. Pam Wilder	1,120
11. Brenda Gunsallus	1,078
12. Cynthia Thomson	1,055
13. Dawn Coleman	908
14. Daina Staugaitiene	846
15. Sandra Bridges	822
16. Reggie Gomes	810
17. Kristi Mercer	809
18. Lil Cooper	808
19. Michelle Fricke	803
20. Stacey White	801
21. Malynda Keck	792
22. Sheila Ford	761
23. Pam Stanfield	752
24. Michelle Wyms	748
25. Sharon Freet	727
26. Jeri Wiley	717
27. Annetta Paraham	705
28. Trish Harris	697
29. Allyson Fasnacht	672
30. Courtney Watkins	669
31. Rachel Hammond	663
32. Harriett Blair	651
33. Meribeth Feenstra	628
34. Monique Leonard	624
35. Rachel Young	610
36. Kristina Palaimaite	600
<b>37T. Avery Warley</b>	<b>594</b>
37T. Carla Weaver	594
39. Theresa Bream	589
40. Anna Barrington	579
41. Molly Frazee	571
42. Missy Roberts	560
43. Erin Wall	551
44T. Beth Ralph	547
44T. Irene Sloof	547
46. Angie Johnson	545
47. Kathy Wooten	543
48. Stephanie Walker	524
49. Jennifer Fairfax	513
50. Trena Criss	509

### Other Current Players:

Amber Mays	483
Devon Brown	478
Rachel McLeod	399

## Tournament Tested

Liberty has played in a pair of tournaments this season, the Navy Classic (Nov. 20-21) and the Marriott Cavalier Classic (Dec. 28-29). The Lady Flames won the Navy Classic, while finishing second at this week's Marriott Cavalier Classic.

Liberty has won four regular-season tournament championships during the last three years, a list which also includes the 2008 National City Xavier Invitational, the 2008 UNLV Lady Rebel Christmas Classic and the 2009 Hokie Hardwood Classic.

## Gaining Some National Recognition

Liberty earned a single vote in the most recent ESPN/USA Today Coaches Top 25 Poll, released on Dec. 8, marking the second straight week the Lady Flames received a vote.

Liberty also collected one vote in the AP Top 25 Poll, released on Nov. 30.

## Lack of Overtime

Liberty has played only one overtime game in its last 208 outings, a 64-62 setback at High Point on Jan. 20, 2007. Since that contest at the Millis Center, the Lady Flames have played 107 consecutive games without needing extra time. No players on Liberty's current roster have competed in an overtime game with the Lady Flames.

The Lady Flames' most recent overtime victory came on Jan. 6, 2004, when Liberty defeated American, 76-72, on the road in double overtime.

Liberty's most recent overtime contest at the Vines Center was a memorable one. The Lady Flames defeated Virginia, 77-69, in overtime on Nov. 26, 2002, to claim their first-ever win over the Cavaliers. It also marked Liberty's first win over a ranked opponent, as Virginia entered the game with a No. 25 national ranking.

## Big Shoes to Fill

Seven seniors graduated from last year's Liberty team, which went 24-9 and won its second consecutive Big South title. Alexandria Bream, Megan Frazee, Molly Frazee, Moriah Frazee, Rachel Hammond, Rebecca Lightfoot and Jessica Nelson accounted for 57.0 percent of the Lady Flames' points and 41.7 percent of the team's rebounds in 2008-09.

Headlining the group was Megan Frazee, who claimed the Big South Player of the Year and Big South Championship MVP awards.

## Youth will be Served

Underclassmen have stepped up to fill the void left by the seven seniors who graduated from the 2008-09 Liberty roster. Through the first 29 games of the 2009-10 campaign, the Lady Flames' freshmen and sophomores are accounting for 74.7 percent of the team's points and 75.9 percent of Liberty's rebounds.

The Lady Flames' top five rebounders are all either freshmen or sophomores, as are four of their top five scorers.

## There is Only One

Starting point guard Amber Mays is the only senior on this year's team roster. Liberty has not had so few seniors since the 2005-06 Lady Flames played the season without a single senior.

Mays has played well during her final collegiate campaign, leading the Lady Flames in assists (3.9 apg) and steals (2.3 apg), while ranking third in field goal percentage (.534) and fourth in scoring (8.2 ppg).

## 20/20 Vision

Devon Brown (29 points) and Avery Warley (26 points) both set new career highs for points during a Jan. 30, 75-62 victory at High Point. In the process, the duo became the first pair of Lady Flames to score 20 points in the same game since Megan Frazee had 22 points and sister Moriah Frazee added 20 in a 76-57 triumph over High Point on Jan. 29, 2008.

Brown and Warley were at it again, Feb. 22 against Charleston Southern. Warley paced all players with 22 points, while Brown added 20 markers of her own against the Buccaneers.

## Top 50 Rebounders in Liberty History

1. Katie Feenstra	1,033
2. Sharon Snodgrass	1,026
3. Megan Frazee	951
4. Elena Kisseleva	876
5. Carla Weaver	859
6. Sharon Wilkerson	625
7. Moriah Frazee	601
8. Sharon Freet	590
9. Kristina Palaimaite	586
10. Pam Stanfield	583
11. Lil Cooper	578
12. Annetta Paraham	556
13. Meribeth Feenstra	547
14. Theresa Bream	536
15. Jennifer Fairfax	533
16T. Wendy Johnson	532
16T. Malynda Keck	532
18. Pam Wilder	529
<b>19. Avery Warley</b>	<b>508</b>
20. Kathy Wooten	504
21. Michelle Fricke	500
22. Helen Gomes	493
23. Trish Harris	484
24. Flori Willie	478
25. Michelle Wyrms	472
26. Kristal Tharp	466
27. Stacey White	456
28. Lynn Beardslee	450
29. Karolina Piotrkiewicz	445
30. Sarah Wilkerson	442
31. Erin Wall	423
32T. Ginny Holloway	420
32T. Daina Staugaitiene	420
34. Dawn Coleman	405
35. Jayne Mottershead	401
36. Sheila Ford	395
37. Angie Johnson	389
38. Trena Criss	370
39. Erma Williams	357
40. Rebecca Lightfoot	351
41. Courtney Watkins	327
42. Crystal Peace	320
43. Molly Frazee	319
44. Monique Leonard	315
45. Harriett Blair	310
46. Reggie Gomes	308
47. Jamie Feagin	303
48. Rachel Young	301
49. Roli-Ann Nikagbatse	296
50T. Rachel Hammond	287
50T. Beth Ralph	287

### Other Current Players:

Kylee Beecher	256
Devon Brown	245
Rachel McLeod	192

## A Tale of Two Halves

Liberty has regularly stepped up its level of play during the second half this season. The Lady Flames are outscoring opponents by an average score of 35.2-24.9 during the final 20 minutes of play, thus far this season.

Liberty is shooting .497 from the field after halftime, while limiting opponents to a .333 second-half field goal percentage.

## Furious Comeback

The Lady Flames fell behind Navy, 20-4, 7:56 into the Navy Classic championship game on Nov. 21. Liberty then outscored the host Midshipmen, 51-23, during the remainder of the game to claim an improbable 55-43 victory.

It was the Lady Flames' largest comeback since Nov. 27, 2001, in a matchup with VCU at the Vines Center. The Rams owned a 38-22 advantage with 18:41 remaining in the second half, before the Lady Flames rallied for a 65-60 victory.

## Furious Comeback, The Sequel

Liberty trailed host Coastal Carolina, 28-18, with 17 minutes remaining in their game on Jan. 25. The Lady Flames then outscored the Chanticleers by a 39-10 count the rest of the way, closing out their 57-38 with a game-ending 24-2 run.

## Bravo to Brown

Devon Brown won the Big South Player of the Week award on Feb. 9, for the second time this season. She averaged 24.5 ppg and 11.0 rpg during the Lady Flames' road wins at High Point and Radford.

Brown was one of four conference players to capture a pair of Big South Player of the Week awards in 2009-10. It also marked the fourth consecutive week a Liberty player received a conference award. Jelena Antic captured back-to-back Big South Freshman of the Week plaudits on Jan. 12 and 19, while Avery Warley was recognized as Big South Player of the Week on Jan. 26.

## Warley Wins

Redshirt sophomore forward Avery Warley averaged 16.5 ppg and 14.0 rpg as Liberty went 2-0 on its annual South Carolina "Beach Trip." As a result, she earned the first Big South Player of the Week award of her career on Jan. 26.

## Antic Repeats

Jelena Antic claimed her second consecutive Big South Freshman of the Week certificate on Jan. 19, after averaging 13.3 ppg and 5.7 rpg in a trio of Liberty victories.

She is the first Lady Flame to win back-to-back Big South Freshman of the Week honors since Feb. 12 and 19, 2002, when Kristal Tharp accomplished the feat.

## Freshman of the Week

LaKendra Washington's 21-point, four-steal performance at Lafayette on Nov. 28 was recognized by the Big South Conference on Dec. 1. The freshman guard was named the Big South Freshman of the Week, marking the second consecutive week a Liberty rookie was honored by the Big South.

## First Since Frazee

After averaging 21.0 ppg and 10.7 rpg during Liberty's 3-0 week, Devon Brown was honored as Big South Player of the Week on Nov. 24. She became the first Lady Flames freshman to win the award since Megan Frazee captured it twice during her rookie season (Dec. 5, 2005 & Jan. 16, 2006).

## National Statistical Rankings

Through the contests of March 7, the Lady Flames were ranked among the NCAA's top 15 teams in seven statistical categories. At that juncture, Liberty sat No. 1 in rebound margin (+15.0), No. 2 in scoring defense (48.0 ppg), No. 5 in field goal percentage (.475), No. 6 in both scoring margin (+18.2) and field goal percentage defense (.343), No. 10 in steals (11.8 spg) and No. 15 in three-point field goal percentage defense (.276).



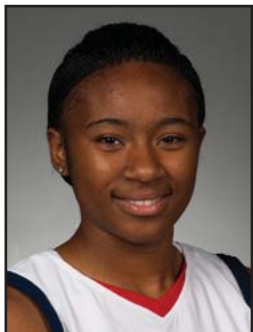
## Liberty's 2009-10 Starting Lineups

Game	Date	Opponent	Result	Guard	Guard	Guard	Forward	Forward	Record
1	Nov. 13	WSSU	W, 71-26	Mays	McLeod	Brown	Beecher	Warley	1-0
2	Nov. 17	UNCG	W, 60-42	Mays	McLeod	Brown	Beecher	Warley	2-0
3	Nov. 20	Tulane	W, 63-52	Mays	McLeod	Brown	Beecher	Warley	3-0
4	Nov. 21	Navy	W, 55-43	Mays	McLeod	Brown	Beecher	Warley	4-0
5	Nov. 28	Lafayette	W, 90-55	Mays	McLeod	Brown	Beecher	Warley	5-0
6	Dec. 1	JMU	L, 50-60	Mays	McLeod	Brown	Beecher	Warley	5-1
7	Dec. 5	Glennville St.	W, 86-45	Mays	McLeod	Brown	Beecher	Warley	6-1
8	Dec. 15	Auburn	L, 64-70	Mays	McLeod	Brown	Beecher	Warley	6-2
9	Dec. 28	Cornell	W, 70-40	Mays	McLeod	Brown	Antic	Warley	1-0
10	Dec. 29	Virginia	L, 54-63	Mays	McLeod	Brown	Antic	Warley	1-1
11	Jan. 2	G.-Webb	L, 65-70	Mays	McLeod	Brown	Antic	Warley	1-2
12	Jan. 5	N.C. A&T	W, 57-51	Mays	McLeod	Brown	Antic	Warley	2-2
13	Jan. 9	Winthrop	W, 67-38	Mays	McLeod	Brown	Antic	Warley	3-2
14	Jan. 12	Longwood	W, 78-55	Mays	McLeod	Brown	Antic	Warley	4-2
15	Jan. 16	Presbyterian	W, 73-27	Mays	McLeod	Brown	Antic	Warley	5-2
16	Jan. 18	UNCA	W, 82-40	Mays	McLeod	Brown	Antic	Warley	6-2
17	Jan. 23	CSU	W, 65-52	Mays	McLeod	Brown	Beecher	Warley	7-2
18	Jan. 25	Coastal Car.	W, 57-38	Mays	McLeod	Brown	Beecher	Warley	8-2
19	Jan. 30	High Point	W, 75-62	Mays	McLeod	Brown	Beecher	Warley	9-2
20	Feb. 1	Radford	W, 63-45	Mays	McLeod	Brown	Beecher	Warley	10-2
21	Feb. 4	N.C. Central	W, 64-44	Mays	McLeod	Brown	Beecher	Warley	11-2
22	Feb. 8	G.-Webb	L, 56-59	Mays	McLeod	Brown	Beecher	Warley	11-3
23	Feb. 15	Winthrop	W, 52-18	Mays	McLeod	Brown	Beecher	Warley	12-3
24	Feb. 20	Coastal Car.	W, 57-55	Mays	McLeod	Brown	Beecher	Warley	13-3
25	Feb. 22	CSU	W, 66-56	Mays	McLeod	Brown	Beecher	Warley	14-3
26	Feb. 27	UNCA	W, 94-66	Mays	McLeod	Brown	Beecher	Warley	15-3
27	Mar. 1	Presbyterian	W, 55-40	Mays	McLeod	Brown	Beecher	Warley	16-3
28	Mar. 5	Radford	W, 66-33	Mays	McLeod	Brown	Beecher	Warley	17-3
29	Mar. 8	High Point	W, 73-48	Mays	McLeod	Brown	Beecher	Warley	18-3

## Miscellaneous Stats

Date	Opponent	LU Result	LU Big				Opp Big			LU in			Opp in		Paint		Off TOs		2nd Ch		Bench	
			Lead	Lead	Ties	LC	Lead	Lead	Tied	Lead	Lead	Tied	LU	Opp	LU	Opp	LU	Opp	LU	Opp	LU	Opp
Nov. 13	Winston-Salem State	W, 71-26	45	0	0	0	38:11	0:00	1:49	38	12	35	10	13	7	18	15					
Nov. 17	UNC Greensboro	W, 60-42	19	2	1	1	35:17	0:18	4:25	40	10	18	14	9	9	10	17					
Nov. 20	Tulane	W, 63-52	20	2	1	1	37:33	1:16	1:11	34	18	23	18	9	2	11	9					
Nov. 21	Navy	W, 55-43	12	16	0	1	12:24	26:56	0:40	26	12	16	12	16	6	8	11					
Nov. 28	Lafayette	W, 90-55	36	0	0	0	39:41	0:00	0:19	64	16	38	22	23	6	34	10					
Dec. 1	James Madison	L, 50-60	2	15	1	1	1:53	35:58	2:09	30	24	10	12	13	12	6	19					
Dec. 5	Glennville State	W, 86-45	42	0	0	0	39:56	0:00	0:04	64	10	19	17	15	16	34	20					
Dec. 15	Auburn	L, 64-70	2	14	2	4	0:54	37:50	1:16	42	20	16	11	6	16	8	25					
Dec. 28	Cornell	W, 70-40	36	0	0	0	39:48	0:00	0:12	44	6	22	12	15	6	24	9					
Dec. 29	No. 21/23 Virginia	L, 54-63	6	11	6	17	15:09	21:19	3:32	36	28	14	35	14	7	16	21					
Jan. 2	Gardner-Webb	L, 65-70	0	13	4	0	0:00	37:52	2:08	34	20	13	21	10	5	20	17					
Jan. 5	North Carolina A&T	W, 57-51	14	2	1	2	37:12	1:21	1:27	32	18	21	20	17	0	9	7					
Jan. 9	Winthrop	W, 67-38	35	7	2	3	30:52	5:41	3:27	34	12	29	8	10	2	25	21					
Jan. 12	Longwood	W, 78-55	24	0	0	0	39:24	0:00	0:36	54	18	27	24	19	11	19	26					
Jan. 16	Presbyterian	W, 73-27	49	0	0	0	39:45	0:00	0:15	38	12	39	6	7	4	21	12					
Jan. 18	UNC Asheville	W, 82-40	46	0	2	0	37:08	0:00	2:52	38	12	33	12	23	11	33	11					
Jan. 23	Charleston Southern	W, 65-52	18	0	0	0	39:56	0:00	0:04	48	6	13	19	16	7	9	18					
Jan. 25	Coastal Carolina	W, 57-38	19	10	5	7	17:01	17:44	5:15	20	8	25	6	18	5	9	6					
Jan. 30	High Point	W, 75-62	13	9	10	11	13:29	20:16	6:15	42	22	16	9	16	2	8	21					
Feb. 1	Radford	W, 63-45	18	2	2	1	36:57	1:12	1:51	36	12	27	13	10	14	7	17					
Feb. 4	N.C. Central	W, 64-44	20	0	0	0	39:08	0:00	0:52	42	22	17	13	20	8	21	17					
Feb. 8	Gardner-Webb	L, 56-59	9	6	2	8	26:46	10:47	2:27	34	30	18	15	15	5	9	11					
Feb. 15	Winthrop	W, 52-18	34	0	0	0	38:42	0:00	1:18	30	8	19	7	11	0	20	13					
Feb. 20	Coastal Carolina	W, 57-55	12	5	2	2	35:46	2:33	1:41	44	12	16	19	5	5	17	5					
Feb. 22	Charleston Southern	W, 66-56	17	2	4	6	33:59	3:55	2:06	44	16	29	23	22	6	10	18					
Feb. 27	UNC Asheville	W, 94-66	33	1	2	4	38:39	0:26	0:55	50	23	42	15	22	4	40	24					
Mar. 1	Presbyterian	W, 55-40	21	0	0	0	39:42	0:00	0:18	30	8	17	19	15	4	17	19					
Mar. 5	Radford	W, 66-33	34	0	1	0	39:35	0:00	0:25	48	8	25	13	18	8	31	10					
Mar. 8	High Point	W, 73-48	25	2	2	3	35:48	1:11	3:01	48	16	25	10	16	12	20	22					

## 2009-10 Game-By-Game Statistics



**# 1**

**LaKendra  
Washington**

*5-8 Freshman Guard*

*Milwaukee, Wis.*

*The Hope School*

**Season/Career Highs**

**Points - 21**

*at Lafayette (11-28-09)*

**FG Made - 9**

*at Lafayette (11-28-09)*

**FG Attempts - 12 (Two times)**

*Most recently, at Lafayette (11-28-09)*

**3FG Made - 2 (Three times)**

*Most recently, vs. NCCU (02-04-10)*

**3FG Attempts - 6**

*vs. Winston-Salem State (11-13-09)*

**FT Made - 4**

*vs. Radford (03-05-10)*

**FT Attempts - 6**

*vs. Radford (03-05-10)*

**Rebounds - 5 (Three times)**

*Most recently, at Virginia (12-29-09)*

**Assists - 4**

*at UNC Asheville (02-27-10)*

**Steals - 5**

*vs. Winston-Salem State (11-13-09)*

**Blocks - 1 (Three times)**

*Most recently, vs. NCCU (02-04-10)*

OPPONENT	DATE	MIN	FG-FGA	3FG-FGA	FT-FTA	OFF-DEF-TOT	A	TO	BLK	STL	PTS
Winston-Salem St.	11-13-09	22	4-12	1-6	0-0	0-2-2	1	3	0	5	9
UNC Greensboro	11-17-09	9	0-2	0-2	2-2	0-0-0	0	0	0	1	2
Tulane	11-20-09	10	1-2	0-1	0-0	0-1-1	0	2	1	0	2
Navy	11-21-09	15	2-3	0-0	2-4	0-4-4	0	1	0	0	6
Lafayette	11-28-09	26	9-12	1-2	2-4	0-0-0	2	1	0	4	21
James Madison	12-01-09	8	1-4	0-0	0-0	1-0-1	0	0	0	0	2
Glenville St.	12-05-09	20	4-9	0-0	0-0	1-4-5	2	5	0	2	8
Auburn	12-15-09	11	1-3	0-1	0-0	0-1-1	0	0	0	0	2
Cornell	12-28-09	21	4-10	0-3	1-2	1-4-5	2	3	1	2	9
Virginia	12-29-09	15	2-4	0-0	1-1	3-2-5	1	3	0	2	5
Gardner-Webb	01-02-10	7	0-2	0-0	0-0	0-0-0	0	0	0	1	0
N.C. A&T	01-05-10	14	0-4	0-1	0-0	1-1-2	0	2	0	0	0
Winthrop	01-09-10	17	2-5	1-2	0-0	1-0-1	1	1	0	3	5
Longwood	01-12-10	8	0-2	0-2	1-2	2-0-2	1	4	0	0	1
Presbyterian	01-16-10	20	3-5	0-2	0-0	1-2-3	0	5	0	2	6
UNC Asheville	01-18-10	16	2-6	2-4	0-3	1-0-1	0	2	0	4	6
Charleston So.	01-23-10	13	2-3	0-1	0-0	0-1-1	0	0	0	1	4
Coastal Carolina	01-25-10	12	2-3	2-2	1-2	0-1-1	0	0	0	0	7
High Point	01-30-10	3	0-0	0-0	0-0	0-0-0	0	0	0	0	0
Radford	02-01-10	18	0-0	0-0	0-0	0-0-0	1	3	0	0	0
N.C. Central	02-04-10	21	2-3	2-3	0-0	1-1-2	2	4	1	3	6
Gardner-Webb	02-08-10	4	0-0	0-0	0-0	0-0-0	1	0	0	0	0
Winthrop	02-15-10	17	1-1	0-0	0-1	1-1-2	1	2	0	3	2
Coastal Carolina	02-20-10	12	2-3	0-1	0-0	0-1-1	0	0	0	0	4
Charleston So.	02-22-10	5	0-0	0-0	0-0	1-0-1	0	1	0	0	0
UNC Asheville	02-27-10	23	5-9	1-3	1-2	0-0-0	4	0	0	3	12
Presbyterian	03-01-10	23	1-2	0-1	0-1	1-1-2	0	5	0	0	2
Radford	03-05-10	27	5-5	0-0	4-6	0-1-1	1	3	0	3	14
High Point	03-08-10	18	1-5	0-2	0-0	0-0-0	1	1	0	2	2

### 2009-10 Notes/Highlights

-- Tabbed Big South Freshman of the Week on Dec. 1.

-- Became Liberty's first true freshman to score 20 points in a game since Megan Frazee during the 2005-06 season, when she exploded for 21 points at Lafayette on Nov. 28.

### Career Stats

Season	GP	GS	Min	Avg	FG	FGA	Pct	3FG	3FGA	Pct	FT	FTA	Pct	ORB	DRB	TOT	Avg	Asst	TO	Blk	Stl	Pts	Avg
2009-10	29	0	435	15.0	56	119	.471	10	39	.256	15	30	.500	16	28	44	1.5	21	51	3	41	137	4.7



**# 11**

**Jelena Antic**

*6-2 Freshman G/F*

*Skopje, Macedonia*

*Liberty Christian Academy*

**Season/Career Highs**

**Points - 19**

*vs. Longwood (01-12-10)*

**FG Made - 8**

*vs. Longwood (01-12-10)*

**FG Attempts - 11**

*vs. Longwood (01-12-10)*

**3FG Made - 2**

*at Gardner-Webb (01-02-10)*

**3FG Attempts - 3**

*at Auburn (12-15-09)*

**FT Made - 6**

*vs. North Carolina A&T (01-05-10)*

**FT Attempts - 7**

*vs. North Carolina A&T (01-05-10)*

**Rebounds - 10 (Two times)**

*Most recently, vs. Longwood (01-12-10)*

**Assists - 4**

*vs. North Carolina A&T (01-05-10)*

**Steals - 3 (Three times)**

*Most recently, at Presby. (03-01-10)*

**Blocks - 1 (Three times)**

*Most recently, vs. Radford (03-05-10)*

**2009-10 Game-By-Game Statistics**

OPPONENT	DATE	MIN	FG-FGA	3FG-FGA	FT-FTA	OFF-DEF-TOT	A	TO	BLK	STL	PTS
Winston-Salem St.	11-13-09					Did not play					
UNC Greensboro	11-17-09					Did not play					
Tulane	11-20-09					Did not play					
Navy	11-21-09	18	0-4	0-0	0-1	4-1-5	3	1	0	0	0
Lafayette	11-28-09	23	2-5	0-0	0-1	2-2-4	2	2	0	3	4
James Madison	12-01-09	12	0-3	0-1	1-2	0-4-4	0	2	0	0	1
Glenville St.	12-05-09	24	5-8	0-0	2-4	2-8-10	0	6	0	1	12
Auburn	12-15-09	23	2-8	0-3	0-0	2-1-3	1	3	0	1	4
Cornell	12-28-09	21	4-5	1-1	2-2	4-4-8	2	1	0	0	11
Virginia	12-29-09	34	2-7	1-1	0-0	3-0-3	3	1	1	0	5
Gardner-Webb	01-02-10	25	4-6	2-2	0-0	3-2-5	1	1	0	0	10
N.C. A&T	01-05-10	29	4-8	0-0	6-7	1-3-4	4	3	1	1	14
Winthrop	01-09-10	27	4-7	0-1	1-1	3-3-6	1	3	0	1	9
Longwood	01-12-10	30	8-11	0-0	3-5	5-5-10	2	5	0	2	19
Presbyterian	01-16-10	24	7-7	0-0	0-0	1-2-3	1	3	0	3	14
UNC Asheville	01-18-10	18	3-5	1-1	0-0	4-0-4	0	3	0	0	7
Charleston So.	01-23-10					Did not play					
Coastal Carolina	01-25-10					Did not play					
High Point	01-30-10					Did not play					
Radford	02-01-10					Did not play					
N.C. Central	02-04-10					Did not play					
Gardner-Webb	02-08-10					Did not play					
Winthrop	02-15-10					Did not play					
Coastal Carolina	02-20-10	20	0-2	0-1	2-4	1-2-3	1	2	0	2	2
Charleston So.	02-22-10	19	2-4	0-0	0-2	2-4-6	3	3	0	1	4
UNC Asheville	02-27-10	24	6-8	1-1	0-0	4-1-5	2	1	0	1	13
Presbyterian	03-01-10	20	2-5	0-2	2-2	2-1-3	3	1	0	3	6
Radford	03-05-10	22	4-9	0-0	4-6	5-3-8	2	1	1	0	12
High Point	03-08-10	22	6-6	0-0	1-2	1-1-2	1	2	0	1	13

**2009-10 Notes/Highlights**

- Tabbed Big South Freshman of the Week on Tuesday, after posting 12.5 ppg and 5.0 rpg during the final two games of the regular season.
- Liberty's first three-time Big South Freshman of the Week since Kristal Tharp in 2001-02.
- Previously won Big South Freshman of the Week on back-to-back weeks (Jan. 12 & 19).
- Liberty's first player to win consecutive Big South Freshman of the Week honors since Kristal Tharp did so Feb. 12 and 19, 2002.
- Returned to action versus Coastal Carolina on Feb. 20, after missing seven games due to a leg injury.
- Made her first appearance in the starting lineup, Dec. 28 versus Cornell.
- Has made 33 of her last 49 field goal attempts (.673), dating back to the second half of the Longwood game (Jan. 12). Shot 6-for-6 during Monday's win over High Point.
- Has connected on six of her last 10 three-pointers (.600), dating back to a Dec. 28 victory over Cornell.

**Career Stats**

Season	GP	GS	Min	Avg	FG	FGA	Pct	3FG	3FGA	Pct	FT	FTA	Pct	ORB	DRB	TOT	Avg	Asst	TO	Blk	Stl	Pts	Avg
2009-10	19	8	435	22.9	65	118	.551	6	14	.429	24	39	.615	49	47	96	5.1	32	44	3	20	160	8.4





**# 12**

**Danika Dale**

*6-1 Sophomore G/F  
Fort Hood, Texas  
Shoemaker HS*

**Season Highs**

**Points - 15**

*vs. N.C. Central (02-04-10)*

**FG Made - 5**

*vs. N.C. Central (02-04-10)*

**FG Attempts - 8**

*at Winthrop (02-15-10)*

**3FG Made - 2**

*at UNC Asheville (02-27-10)*

**3FG Attempts - 3 (Three times)**

*Most recently, at UNCA (02-27-10)*

**FT Made - 5**

*vs. N.C. Central (02-04-10)*

**FT Attempts - 8**

*vs. N.C. Central (02-04-10)*

**Rebounds - 9**

*vs. Glenville State (12-05-09)*

**Assists - 3 (Four times)**

*Most recently, at UNCA (02-27-10)*

**Steals - 5**

*vs. Radford (03-05-10)*

**Blocks - 2 (Four times)**

*Most recently, at Radford (02-01-10)*

**Career Highs**

**Points - 15**

*vs. N.C. Central (02-04-10)*

**FG Made - 5**

*vs. N.C. Central (02-04-10)*

**FG Attempts - 8**

*at Winthrop (02-15-10)*

**3FG Made - 2 (Two times)**

*Most recently, at UNCA (02-27-10)*

**3FG Attempts - 3 (Five times)**

*Most recently, at UNCA (02-27-10)*

**FT Made - 5**

*vs. N.C. Central (02-04-10)*

**FT Attempts - 9**

*vs. Saint Paul's (12-13-08)*

**Rebounds - 9**

*vs. Glenville State (12-05-09)*

**Assists - 6**

*vs. Presbyterian (03-02-09)*

**Steals - 5**

*vs. Radford (03-05-10)*

**Blocks - 2 (Four times)**

*Most recently, at Radford (02-01-10)*

**2009-10 Game-By-Game Statistics**

OPPONENT	DATE	MIN	FG-FGA	3FG-FGA	FT-FTA	OFF-DEF-TOT	A	TO	BLK	STL	PTS
Winston-Salem St.	11-13-09	23	1-5	0-2	4-4	2-5-7	3	3	2	3	6
UNC Greensboro	11-17-09	16	0-3	0-0	0-0	1-3-4	0	1	2	2	0
Tulane	11-20-09	11	0-1	0-0	0-0	1-0-1	1	1	0	2	0
Navy	11-21-09	3	0-2	0-2	0-0	1-1-2	1	0	0	0	0
Lafayette	11-28-09	15	2-2	1-1	1-2	0-4-4	1	0	0	0	6
James Madison	12-01-09	21	1-4	1-1	0-0	0-5-5	1	2	2	0	3
Glenville St.	12-05-09	19	2-3	0-0	2-3	1-8-9	3	4	0	3	6
Auburn	12-15-09	4	0-1	0-0	0-0	0-0-0	0	1	0	0	0
Cornell	12-28-09	19	2-4	0-1	1-2	3-4-7	2	0	0	0	5
Virginia	12-29-09	14	1-6	0-3	1-2	1-3-4	0	4	0	0	3
Gardner-Webb	01-02-10	12	4-5	1-2	1-2	0-0-0	1	2	0	0	10
N.C. A&T	01-05-10	10	1-2	0-0	0-1	0-2-2	1	2	0	0	2
Winthrop	01-09-10	20	2-3	0-1	0-0	2-3-5	3	1	0	1	4
Longwood	01-12-10	9	1-3	0-1	0-0	2-2-4	1	1	0	1	2
Presbyterian	01-16-10	18	2-6	1-3	0-0	2-3-5	1	3	0	1	5
UNC Asheville	01-18-10	12	2-4	0-1	1-1	2-1-3	1	2	1	1	5
Charleston So.	01-23-10	19	1-4	0-1	1-2	2-2-4	2	3	0	1	3
Coastal Carolina	01-25-10	24	0-2	0-0	0-0	0-4-4	2	1	1	2	0
High Point	01-30-10	21	0-2	0-0	2-2	1-1-2	0	0	0	1	2
Radford	02-01-10	20	1-2	0-0	0-0	0-1-1	0	1	2	1	2
N.C. Central	02-04-10	23	5-7	0-0	5-8	2-1-3	2	3	1	0	15
Gardner-Webb	02-08-10	21	2-3	1-1	1-1	0-0-0	0	1	0	0	6
Winthrop	02-15-10	23	4-8	0-0	3-3	1-4-5	0	5	0	0	11
Coastal Carolina	02-20-10	12	1-1	0-0	3-4	0-0-0	0	0	0	0	5
Charleston So.	02-22-10	9	0-0	0-0	1-2	0-0-0	0	0	0	0	1
UNC Asheville	02-27-10	19	3-6	2-3	2-7	1-3-4	3	3	0	1	10
Presbyterian	03-01-10	17	1-6	0-0	0-0	1-2-3	0	0	0	0	2
Radford	03-05-10	24	2-5	0-1	0-0	1-3-4	2	4	0	5	4
High Point	03-08-10	21	1-2	0-0	2-2	1-6-7	1	2	0	1	4

**2009-10 Notes/Highlights**

**Career Stats**

Season	GP	GS	Min	Avg	FG	FGA	Pct	3FG	3FGA	Pct	FT	FTA	Pct	ORB	DRB	TOT	Avg	Asst	TO	Blk	Stl	Pts	Avg
2008-09	26	0	254	9.8	16	45	.356	3	15	.200	8	18	.444	10	33	43	1.7	21	27	2	12	43	1.7
2009-10	29	0	479	16.5	42	102	.412	7	24	.292	31	48	.646	28	71	99	3.4	32	50	11	26	122	4.2
<b>TOTAL</b>	<b>55</b>	<b>0</b>	<b>733</b>	<b>13.3</b>	<b>58</b>	<b>147</b>	<b>.395</b>	<b>10</b>	<b>39</b>	<b>.256</b>	<b>39</b>	<b>66</b>	<b>.591</b>	<b>38</b>	<b>104</b>	<b>142</b>	<b>2.6</b>	<b>53</b>	<b>77</b>	<b>13</b>	<b>38</b>	<b>165</b>	<b>3.0</b>



**# 15**

**Kylee Beecher**  
*6-4 Sophomore F*  
*Roanoke, Va.*  
*Hidden Valley HS*

**Season Highs**

**Points - 14 (Two times)**

*Most recently, vs. UNCA (01-18-10)*

**FG Made - 7**

*vs. Glenville State (12-05-09)*

**FG Attempts - 9**

*at Charleston So. (01-23-10)*

**3FG Made - 1**

*at Winthrop (02-15-10)*

**3FG Attempts - 2 (Three times)**

*Most recently, at Winthrop (02-15-10)*

**FT Made - 8**

*vs. UNC Asheville (01-18-10)*

**FT Attempts - 10**

*vs. UNC Asheville (01-18-10)*

**Rebounds - 9 (Four times)**

*Most recently, at UNCA (02-27-10)*

**Assists - 4**

*vs. N.C. Central (02-04-10)*

**Steals - 3**

*at Radford (02-01-10)*

**Blocks - 2**

*at Winthrop (02-15-10)*

**Career Highs**

**Points - 18**

*vs. Saint Paul's (12-13-08)*

**FG Made - 7**

*vs. Glenville State (12-05-09)*

**FG Attempts - 10**

*vs. Saint Paul's (12-13-08)*

**3FG Made - 1 (Three times)**

*Most recently, at Winthrop (02-15-10)*

**3FG Attempts - 2 (Five times)**

*Most recently, at Winthrop (02-15-10)*

**FT Made - 8**

*vs. UNC Asheville (01-18-10)*

**FT Attempts - 10**

*vs. UNC Asheville (01-18-10)*

**Rebounds - 10 (Three times)**

*Most recently, vs. High Point (01-31-09)*

**Assists - 5**

*vs. Saint Paul's (12-13-08)*

**Steals - 3 (Three times)**

*Most recently, at Radford (02-01-10)*

**Blocks - 2**

*at Winthrop (02-15-10)*

**2009-10 Game-By-Game Statistics**

OPPONENT	DATE	MIN	FG-FGA	3FG-FGA	FT-FTA	OFF-DEF-TOT	A	TO	BLK	STL	PTS
Winston-Salem St.	11-13-09	23	2-3	0-0	4-4	1-1-2	2	0	1	0	8
UNC Greensboro	11-17-09	37	4-8	0-0	3-7	2-3-5	0	4	0	0	11
Tulane	11-20-09	36	3-5	0-0	0-0	3-0-3	2	4	0	1	6
Navy	11-21-09	36	2-8	0-1	0-0	0-2-2	0	2	0	1	4
Lafayette	11-28-09	25	2-2	0-0	1-2	1-2-3	2	0	1	0	5
James Madison	12-01-09	26	2-4	0-0	0-0	3-3-6	1	1	1	2	4
Glenville St.	12-05-09	21	7-8	0-0	0-0	4-2-6	0	1	0	0	14
Auburn	12-15-09	25	1-4	0-0	5-6	0-0-0	1	0	0	2	7
Cornell	12-28-09	20	2-6	0-2	1-2	3-0-3	0	4	0	0	5
Virginia	12-29-09	21	2-4	0-1	2-2	2-0-2	0	0	0	0	6
Gardner-Webb	01-02-10	16	1-3	0-1	2-3	0-3-3	0	1	0	0	4
N.C. A&T	01-05-10	18	0-1	0-0	0-0	0-3-3	0	4	1	1	0
Winthrop	01-09-10	19	2-3	0-0	1-1	0-2-2	2	1	1	1	5
Longwood	01-12-10	25	3-5	0-0	4-5	1-5-6	1	3	0	0	10
Presbyterian	01-16-10	18	1-1	0-0	3-6	0-3-3	1	2	0	1	5
UNC Asheville	01-18-10	27	3-8	0-0	8-10	2-3-5	2	2	0	2	14
Charleston So.	01-23-10	33	4-9	0-0	2-2	4-5-9	0	2	0	2	10
Coastal Carolina	01-25-10	32	2-6	0-0	2-2	8-1-9	1	2	0	1	6
High Point	01-30-10	21	0-4	0-1	3-4	2-2-4	2	0	0	0	3
Radford	02-01-10	38	5-8	0-0	3-4	3-6-9	0	4	0	3	13
N.C. Central	02-04-10	19	1-7	0-0	1-2	1-1-2	4	3	0	0	3
Gardner-Webb	02-08-10	30	2-6	0-2	0-0	3-1-4	2	0	0	1	4
Winthrop	02-15-10	29	2-7	1-2	4-6	1-4-5	1	0	2	1	9
Coastal Carolina	02-20-10	25	4-7	0-1	1-1	1-0-1	0	2	0	1	9
Charleston So.	02-22-10	28	0-3	0-1	4-4	1-1-2	1	1	0	0	4
UNC Asheville	02-27-10	17	3-7	0-0	6-7	6-3-9	0	3	0	0	12
Presbyterian	03-01-10	18	1-2	0-0	0-0	2-1-3	0	2	0	0	2
Radford	03-05-10	24	1-5	0-0	2-2	0-2-2	1	2	0	0	4
High Point	03-08-10	24	2-5	0-0	0-0	2-1-3	1	2	0	0	4

**2009-10 Notes/Highlights**

-- Ranks No. 14 in the Big South with 1.9 offensive rebounds per game.

-- Has hit eight straight free throw attempts, dating back to the first half of the UNC Asheville game on Feb. 27.

**Career Stats**

Season	GP	GS	Min	Avg	FG	FGA	Pct	3FG	3FGA	Pct	FT	FTA	Pct	ORB	DRB	TOT	Avg	Asst	TO	Blk	Stl	Pts	Avg
2008-09	31	4	664	21.4	54	118	.458	2	7	.286	27	38	.711	43	97	140	4.5	19	45	2	18	137	4.4
2009-10	29	21	731	25.2	64	149	.430	1	12	.083	62	82	.756	56	60	116	4.0	27	52	7	20	191	6.6
<b>TOTAL</b>	<b>60</b>	<b>25</b>	<b>1395</b>	<b>23.3</b>	<b>118</b>	<b>267</b>	<b>.442</b>	<b>3</b>	<b>19</b>	<b>.158</b>	<b>89</b>	<b>120</b>	<b>.742</b>	<b>99</b>	<b>157</b>	<b>256</b>	<b>4.3</b>	<b>46</b>	<b>97</b>	<b>9</b>	<b>38</b>	<b>328</b>	<b>5.5</b>



**# 21**

**Amber Mays**  
*5-6 Senior Guard*  
*Pasadena, Calif.*  
*Pasadena HS*  
*(State Fair CC)*

**Season Highs**

**Points - 18**

*at Auburn (12-15-09)*

**FG Made - 9**

*at Auburn (12-15-09)*

**FG Attempts - 15**

*vs. James Madison (12-01-09)*

**3FG Made - 2**

*vs. UNC Asheville (01-18-10)*

**3FG Attempts - 2**

*vs. UNC Asheville (01-18-10)*

**FT Made - 4 (Two times)**

*Most recently, at Coastal (01-25-10)*

**FT Attempts - 7**

*at Coastal Carolina (01-25-10)*

**Rebounds - 5 (Two times)**

*Most recently, at High Point (01-30-10)*

**Assists - 10**

*vs. Winthrop (01-09-10)*

**Steals - 5**

*vs. Longwood (01-12-10)*

**Blocks - 1**

*at Charleston So. (01-23-10)*

**Career Highs**

**Points - 18**

*at Auburn (12-15-09)*

**FG Made - 9**

*at Auburn (12-15-09)*

**FG Attempts - 15**

*vs. James Madison (12-01-09)*

**3FG Made - 2 (Two times)**

*Most recently, vs. UNCA (01-18-10)*

**3FG Attempts - 3**

*at Vanderbilt (12-22-08)*

**FT Made - 6**

*at UNC Asheville (01-19-09)*

**FT Attempts - 8**

*vs. UC Riverside (11-21-08)*

**Rebounds - 6 (Two times)**

*Most recently, vs. Radford (02-02-09)*

**Assists - 10**

*vs. Winthrop (01-09-10)*

**Steals - 8**

*vs. East Tennessee St. (01-13-09)*

**Blocks - 1 (Three times)**

*Most recently, at CSU (01-23-10)*

**2009-10 Game-By-Game Statistics**

OPPONENT	DATE	MIN	FG-FGA	3FG-FGA	FT-FTA	OFF-DEF-TOT	A	TO	BLK	STL	PTS
Winston-Salem St.	11-13-09	24	3-7	0-0	1-2	0-0-0	6	1	0	4	7
UNC Greensboro	11-17-09	26	4-7	1-1	2-6	0-1-1	4	5	0	4	11
Tulane	11-20-09	33	4-6	0-0	2-4	0-2-2	3	4	0	4	10
Navy	11-21-09	30	2-5	0-0	4-5	2-0-2	5	3	0	1	8
Lafayette	11-28-09	31	4-6	0-0	3-4	1-3-4	4	5	0	4	11
James Madison	12-01-09	33	7-15	0-1	0-1	0-2-2	2	1	0	1	14
Glenville St.	12-05-09	18	2-3	0-0	1-2	0-2-2	4	2	0	2	5
Auburn	12-15-09	35	9-13	0-0	0-0	0-1-1	3	6	0	4	18
Cornell	12-28-09	20	2-2	0-0	0-0	0-2-2	8	2	0	4	4
Virginia	12-29-09	28	2-4	0-0	3-4	0-0-0	3	7	0	3	7
Gardner-Webb	01-02-10	33	4-9	0-0	2-6	3-2-5	6	4	0	1	10
N.C. A&T	01-05-10	25	2-4	0-0	0-0	0-2-2	3	2	0	1	4
Winthrop	01-09-10	22	1-3	0-0	1-2	0-0-0	10	2	0	2	3
Longwood	01-12-10	30	3-4	1-1	0-0	0-0-0	3	5	0	5	7
Presbyterian	01-16-10	21	4-6	0-0	0-0	0-2-2	6	1	0	2	8
UNC Asheville	01-18-10	23	5-8	2-2	2-2	1-0-1	5	0	0	3	14
Charleston So.	01-23-10	27	6-9	0-0	2-5	0-0-0	3	1	1	1	14
Coastal Carolina	01-25-10	31	2-6	0-1	4-7	1-1-2	2	4	0	2	8
High Point	01-30-10	26	2-6	0-0	3-4	0-5-5	2	6	0	1	7
Radford	02-01-10	24	4-6	0-0	2-4	1-0-1	7	5	0	3	10
N.C. Central	02-04-10	28	3-6	0-0	2-2	0-2-2	8	4	0	1	8
Gardner-Webb	02-08-10	34	2-7	0-1	2-6	1-0-1	3	2	0	2	6
Winthrop	02-15-10	20	0-1	0-0	1-2	0-1-1	1	4	0	0	1
Coastal Carolina	02-20-10	34	6-10	0-0	0-0	1-2-3	2	1	0	1	12
Charleston So.	02-22-10	20	2-3	0-0	2-4	0-0-0	0	5	0	1	6
UNC Asheville	02-27-10	19	2-6	0-0	2-4	0-2-2	2	2	0	3	6
Presbyterian	03-01-10	25	2-4	0-0	1-1	0-1-1	1	3	0	3	5
Radford	03-05-10	16	2-5	0-0	0-0	1-1-2	2	1	0	2	4
High Point	03-08-10	26	4-7	0-1	2-2	0-0-0	5	3	0	2	10

**2009-10 Notes/Highlights**

- The only senior on Liberty's 2009-10 roster.
- Leads the Big South in assist-to-turnover ratio (1.24), while ranking No. 3 in both assists (3.9 apg) and steals (2.3 spg).
- Distributed a career-high 10 assists against Winthrop (Jan. 9), the most by a Lady Flame since Daina Staugaitiene's 10 assists versus Morgan State on Nov. 22, 2002.
- Had recorded a steal in 24 consecutive games, prior to the Feb. 15 game at Winthrop. Has notched a steal in 38 of her last 40 outings.
- First Lady Flame to distribute 100 assists and come up with 50 steals in back-to-back seasons since Sarah Wilkerson did so three straight years (1996-97, 1997-98 and 1998-99).
- Needs 17 points to become the 51st player in program history to score 500 career points.

**Career Stats**

Season	GP	GS	Min	Avg	FG	FGA	Pct	3FG	3FGA	Pct	FT	FTA	Pct	ORB	DRB	TOT	Avg	Asst	TO	Blk	Stl	Pts	Avg
2008-09	33	31	1002	30.4	92	201	.458	5	15	.333	56	86	.651	11	75	86	2.6	126	114	2	68	245	7.4
2009-10	29	29	762	26.3	95	178	.534	4	8	.500	44	79	.557	12	34	46	1.6	113	91	1	67	238	8.2
<b>TOTAL</b>	<b>62</b>	<b>60</b>	<b>1764</b>	<b>28.5</b>	<b>187</b>	<b>379</b>	<b>.493</b>	<b>9</b>	<b>23</b>	<b>.391</b>	<b>100</b>	<b>165</b>	<b>.606</b>	<b>23</b>	<b>109</b>	<b>132</b>	<b>2.1</b>	<b>239</b>	<b>205</b>	<b>3</b>	<b>135</b>	<b>483</b>	<b>7.8</b>





**# 23**

**Avery Warley**  
 6-3 R-Sophomore F  
 Washington, D.C.  
 H.D. Woodson HS

**Season Highs**

**Points - 26**  
*at High Point (01-30-10)*  
**FG Made - 9 (Two times)**  
*Most recently, vs. CSU (02-22-10)*  
**FG Attempts - 14**  
*at UNC Asheville (02-27-10)*  
**3FG Made - 0**  
*None*  
**3FG Attempts - 1**  
*at UNC Asheville (02-27-10)*  
**FT Made - 8**  
*at High Point (01-30-10)*  
**FT Attempts - 11**  
*at High Point (01-30-10)*  
**Rebounds - 16**  
*at Charleston So. (01-23-10)*  
**Assists - 2 (Three times)**  
*Most recently, vs. UNCA (01-18-10)*  
**Steals - 3 (Three times)**  
*Most recently, vs. CSU (02-22-10)*  
**Blocks - 3 (Three times)**  
*Most recently, vs. High Point (03-08-10)*

**Career Highs**

**Points - 26**  
*at High Point (01-30-10)*  
**FG Made - 9 (Two times)**  
*Most recently, vs. CSU (02-22-10)*  
**FG Attempts - 14**  
*at UNC Asheville (02-27-10)*  
**3FG Made - 0**  
*None*  
**3FG Attempts - 1**  
*at UNC Asheville (02-27-10)*  
**FT Made - 8**  
*at High Point (01-30-10)*  
**FT Attempts - 11**  
*at High Point (01-30-10)*  
**Rebounds - 18**  
*at Virginia Tech (12-30-08)*  
**Assists - 3**  
*vs. Saint Paul's (12-13-08)*  
**Steals - 3 (Five times)**  
*Most recently, vs. CSU (02-22-10)*  
**Blocks - 4 (Two times)**  
*Most recently, vs. Winthrop (02-16-09)*

**2009-10 Game-By-Game Statistics**

OPPONENT	DATE	MIN	FG-FGA	3FG-FGA	FT-FTA	OFF-DEF-TOT	A	TO	BLK	STL	PTS
Winston-Salem St.	11-13-09	26	2-6	0-0	0-2	4-5-9	2	5	0	0	4
UNC Greensboro	11-17-09	19	0-0	0-0	0-0	2-5-7	0	1	0	1	0
Tulane	11-20-09	37	4-10	0-0	1-2	6-5-11	1	4	0	1	9
Navy	11-21-09	32	5-7	0-0	0-0	3-3-6	0	6	0	0	10
Lafayette	11-28-09	21	8-13	0-0	3-3	8-3-11	0	1	0	0	19
James Madison	12-01-09	29	3-7	0-0	3-4	3-4-7	2	2	0	1	9
Glenville St.	12-05-09	25	3-6	0-0	1-4	2-4-6	0	1	1	0	7
Auburn	12-15-09	33	4-6	0-0	2-2	3-3-6	0	2	0	0	10
Cornell	12-28-09	22	4-5	0-0	2-6	2-5-7	0	2	1	1	10
Virginia	12-29-09	32	6-12	0-0	0-0	3-5-8	0	5	0	2	12
Gardner-Webb	01-02-10	26	4-8	0-0	2-5	3-3-6	0	5	1	3	10
N.C. A&T	01-05-10	26	4-8	0-0	1-4	6-5-11	0	5	0	2	9
Winthrop	01-09-10	23	2-2	0-0	1-2	1-4-5	1	5	1	1	5
Longwood	01-12-10	21	6-7	0-0	0-1	3-2-5	1	1	0	0	12
Presbyterian	01-16-10	25	1-2	0-0	4-7	2-0-2	0	3	0	1	6
UNC Asheville	01-18-10	24	2-8	0-0	2-6	4-6-10	2	2	3	0	6
Charleston So.	01-23-10	30	8-12	0-0	2-4	5-11-16	0	2	0	0	18
Coastal Carolina	01-25-10	28	6-9	0-0	3-8	7-5-12	0	2	1	0	15
High Point	01-30-10	38	9-13	0-0	8-11	5-9-14	0	0	1	2	26
Radford	02-01-10	24	2-4	0-0	0-0	1-4-5	0	1	2	1	4
N.C. Central	02-04-10	34	8-11	0-0	0-1	6-5-11	0	2	1	1	16
Gardner-Webb	02-08-10	32	5-10	0-0	5-7	3-7-10	0	3	2	1	15
Winthrop	02-15-10	26	2-3	0-0	0-0	3-5-8	1	1	3	2	4
Coastal Carolina	02-20-10	20	2-6	0-0	1-2	4-4-8	1	4	1	3	5
Charleston So.	02-22-10	34	9-9	0-0	4-9	6-4-10	1	2	0	3	22
UNC Asheville	02-27-10	20	8-14	0-1	6-9	7-3-10	0	1	0	2	22
Presbyterian	03-01-10	26	3-3	0-0	7-7	5-6-11	0	5	1	2	13
Radford	03-05-10	22	7-9	0-0	3-4	6-6-12	0	2	1	0	17
High Point	03-08-10	27	6-13	0-0	1-1	3-5-8	1	1	3	2	13

**2009-10 Notes/Highlights**

- Tabbed Big South Player of the Week on Tuesday, after posting 15.0 ppg and 10.0 rpg during the Lady Flames' 2-0 final weekend of the regular season.
- Previously named Big South Player of the Week on Jan. 26, after averaging 16.5 ppg and 14.0 rpg during Liberty's 2-0 South Carolina "Beach Trip."
- Set the Vines Center single-game field goal percentage record Feb. 22 versus Charleston Southern, connecting on all nine of her attempts. Made 11 consecutive field goals overall, including her first two shots at UNC Asheville on Feb. 27.
- Shot 7-7 from the free throw line, March 1 at Presbyterian, as part of a career-best string of 15 straight made foul shots (Feb. 27-March 5).
- Leads the Big South in field goal percentage (.596) and ranks No. 2 in both offensive rebounds (4.0 rpg) and total rebounds (8.7 rpg), No. 4 in defensive rebounds (4.7 rpg), No. 8 in blocked shots (0.8 bpg) and No. 10 in scoring (11.3 ppg).
- Named to the Marriott Cavalier Classic all-tournament team, after averaging 11.0 ppg and 7.5 rpg in two games.
- Has tallied 508 career boards, putting her in 19th place in program history.
- Has scored 594 career points, putting her in a tie for 37th place in program history.
- Has notched 10 double-doubles this season and 12 in her career.

**Career Stats**

Season	GP	GS	Min	Avg	FG	FGA	Pct	3FG	3FGA	Pct	FT	FTA	Pct	ORB	DRB	TOT	Avg	Asst	TO	Blk	Stl	Pts	Avg
2008-09	33	33	832	25.2	112	179	.626	0	0	.000	42	81	.519	85	171	256	7.8	11	76	47	23	266	8.1
2009-10	29	29	782	27.0	133	223	.596	0	1	.000	62	111	.559	116	136	252	8.7	13	76	23	32	328	11.3
<b>TOTAL</b>	<b>62</b>	<b>62</b>	<b>1614</b>	<b>26.0</b>	<b>245</b>	<b>402</b>	<b>.609</b>	<b>0</b>	<b>1</b>	<b>.000</b>	<b>104</b>	<b>192</b>	<b>.542</b>	<b>201</b>	<b>308</b>	<b>508</b>	<b>8.2</b>	<b>24</b>	<b>152</b>	<b>70</b>	<b>55</b>	<b>594</b>	<b>9.6</b>



**# 25**

**Dymond Morgan**

*5-7 Junior Guard*

*Lynwood, Calif.*

*Lynwood HS*

*(Midland College)*

**Season/Career Highs**

**Points - 11**

*vs. Winthrop (01-09-10)*

**FG Made - 4**

*vs. Winthrop (01-09-10)*

**FG Attempts - 7 (Two times)**

*Most recently, at Winthrop (02-15-10)*

**3FG Made - 2**

*vs. Winthrop (01-09-10)*

**3FG Attempts - 3 (Two times)**

*Most recently, at Winthrop (02-15-10)*

**FT Made - 4**

*at Presbyterian (03-01-10)*

**FT Attempts - 4 (Three times)**

*Most recently, at Presby. (03-01-10)*

**Rebounds - 7**

*vs. Glenville State (12-05-09)*

**Assists - 7**

*vs. Glenville State (12-05-09)*

**Steals - 5**

*vs. Presbyterian (01-16-10)*

**Blocks - 0**

*None*

## 2009-10 Game-By-Game Statistics

OPPONENT	DATE	MIN	FG-FGA	3FG-FGA	FT-FTA	OFF-DEF-TOT	A	TO	BLK	STL	PTS
Winston-Salem St.	11-13-09	16	0-2	0-0	0-0	1-3-4	1	2	0	1	0
UNC Greensboro	11-17-09	24	3-5	0-1	0-0	1-4-5	2	2	0	1	6
Tulane	11-20-09	18	3-6	1-1	2-2	0-2-2	0	4	0	2	9
Navy	11-21-09	15	1-2	0-0	0-0	1-2-3	0	2	0	0	2
Lafayette	11-28-09	4	0-1	0-0	1-2	0-0-0	0	1	0	0	1
James Madison	12-01-09	7	0-0	0-0	0-0	0-0-0	0	1	0	0	0
Glenville St.	12-05-09	22	2-2	0-0	2-3	0-7-7	7	8	0	1	6
Auburn	12-15-09	10	1-1	0-0	0-0	0-2-2	0	0	0	1	2
Cornell	12-28-09	22	0-3	0-0	2-2	1-0-1	1	5	0	3	2
Virginia	12-29-09	12	1-2	0-0	0-0	1-0-1	0	3	0	0	2
Gardner-Webb	01-02-10	13	2-4	0-0	2-3	0-1-1	1	0	0	2	6
N.C. A&T	01-05-10	17	2-3	0-0	1-2	0-0-0	1	1	0	3	5
Winthrop	01-09-10	20	4-7	2-3	1-2	0-1-1	1	1	0	2	11
Longwood	01-12-10	15	2-6	0-1	2-2	0-3-3	3	2	0	1	6
Presbyterian	01-16-10	18	2-3	0-0	1-1	0-0-0	4	2	0	5	5
UNC Asheville	01-18-10	22	3-6	0-2	0-0	0-2-2	6	2	0	4	6
Charleston So.	01-23-10	13	0-2	0-1	2-3	0-1-1	0	3	0	0	2
Coastal Carolina	01-25-10	14	1-5	0-2	0-0	0-0-0	1	1	0	0	2
High Point	01-30-10	19	1-5	1-1	3-4	0-0-0	1	1	0	3	6
Radford	02-01-10	17	1-5	0-0	3-4	1-2-3	1	3	0	3	5
N.C. Central	02-04-10	12	0-3	0-2	0-0	1-0-1	1	1	0	0	0
Gardner-Webb	02-08-10	9	1-2	0-1	1-2	0-0-0	1	0	0	0	3
Winthrop	02-15-10	23	2-7	1-3	0-0	0-1-1	1	5	0	2	5
Coastal Carolina	02-20-10	14	1-2	0-0	1-2	0-1-1	1	1	0	0	3
Charleston So.	02-22-10	23	2-5	0-1	1-2	0-1-1	2	3	0	3	5
UNC Asheville	02-27-10	20	1-6	0-1	0-2	0-0-0	5	2	0	1	2
Presbyterian	03-01-10	15	1-5	0-0	4-4	0-0-0	0	2	0	3	6
Radford	03-05-10	21	0-4	0-0	1-2	0-1-1	2	3	0	4	1
High Point	03-08-10	14	0-4	0-0	1-3	2-0-2	0	1	0	1	1

## 2009-10 Notes/Highlights

## Career Stats

Season	GP	GS	Min	Avg	FG	FGA	Pct	3FG	3FGA	Pct	FT	FTA	Pct	ORB	DRB	TOT	Avg	Asst	TO	Blk	Stl	Pts	Avg
2009-10	29	0	469	16.2	37	108	.343	5	20	.250	31	47	.660	9	34	43	1.5	43	63	0	46	110	3.8



**# 30**

**Brittany Campbell**  
*6-0 R-Freshman Guard*  
*Rustburg, Va.*  
*Brookville HS*

**Career Highs**

**Points - 11**

*vs. Hartford (11-28-08)*

**FG Made - 4**

*vs. Hartford (11-28-08)*

**FG Attempts - 12**

*at James Madison (12-02-08)*

**3FG Made - 3**

*at James Madison (12-02-08)*

**3FG Attempts - 7**

*at James Madison (12-02-08)*

**FT Made - 3**

*vs. South Alabama (11-29-08)*

**FT Attempts - 3 (Two times)**

*Most recently, vs. S. Alabama (11-29-08)*

**Rebounds - 3 (Three times)**

*Most recently, at JMU (12-02-08)*

**Assists - 1**

*vs. Hartford (11-28-08)*

**Steals - 2**

*vs. South Alabama (11-29-08)*

**Blocks - 1**

*vs. South Alabama (11-29-08)*

## 2009-10 Game-By-Game Statistics

OPPONENT	DATE	MIN	FG-FGA	3FG-FGA	FT-FTA	OFF-DEF-TOT	A	TO	BLK	STL	PTS
Winston-Salem St.	11-13-09										Did not play
UNC Greensboro	11-17-09										Did not play
Tulane	11-20-09										Did not play
Navy	11-21-09										Did not play
Lafayette	11-28-09										Did not play
James Madison	12-01-09										Did not play
Glenville St.	12-05-09										Did not play
Auburn	12-15-09										Did not play
Cornell	12-28-09										Did not play
Virginia	12-29-09										Did not play
Gardner-Webb	01-02-10										Did not play
N.C. A&T	01-05-10										Did not play
Winthrop	01-09-10										Did not play
Longwood	01-12-10										Did not play
Presbyterian	01-16-10										Did not play
UNC Asheville	01-18-10										Did not play
Charleston So.	01-23-10										Did not play
Coastal Carolina	01-25-10										Did not play
High Point	01-30-10										Did not play
Radford	02-01-10										Did not play
N.C. Central	02-04-10										Did not play
Gardner-Webb	02-08-10										Did not play
Winthrop	02-15-10										Did not play
Coastal Carolina	02-20-10										Did not play
Charleston So.	02-22-10										Did not play
UNC Asheville	02-27-10										Did not play
Presbyterian	03-01-10										Did not play
Radford	03-05-10										Did not play
High Point	03-08-10										Did not play

## 2009-10 Notes/Highlights

-- Has missed the first 29 games of the 2009-10 season, due to a knee injury.

## Career Stats

Season	GP	GS	Min	Avg	FG	FGA	Pct	3FG	3FGA	Pct	FT	FTA	Pct	ORB	DRB	TOT	Avg	Asst	TO	Blk	Stl	Pts	Avg
2008-09	5	1	104	20.8	11	31	.355	6	18	.333	7	9	.778	5	6	11	2.2	1	6	1	4	35	7.0





**# 32**

**Rachel McLeod**  
*5-10 Junior Guard*  
*Houston, Texas*  
*Home Schooled*

**Season Highs**

**Points - 11**

*vs. Presbyterian (01-16-10)*

**FG Made - 4 (Two times)**

*Most recently, vs. G.-Webb (02-08-10)*

**FG Attempts - 8 (Two times)**

*Most recently, vs. NCCU (02-04-10)*

**3FG Made - 2**

*vs. UNC Asheville (01-18-10)*

**3FG Attempts - 3 (Three times)**

*Most recently, vs. UNCA (01-18-10)*

**FT Made - 5**

*at Radford (02-01-10)*

**FT Attempts - 6**

*at Radford (02-01-10)*

**Rebounds - 8**

*at Gardner-Webb (01-02-10)*

**Assists - 7**

*vs. Glensville State (12-05-09)*

**Steals - 4**

*vs. UNC Asheville (01-18-10)*

**Blocks - 1**

*vs. Longwood (01-12-10)*

**Career Highs**

**Points - 13**

*at Coastal Carolina (02-21-09)*

**FG Made - 4 (Six times)**

*Most recently, vs. G.-Webb (02-08-10)*

**FG Attempts - 13**

*at Old Dominion (03-23-08)*

**3FG Made - 2 (Four times)**

*Most recently, vs. UNCA (01-18-10)*

**3FG Attempts - 5**

*at Old Dominion (03-23-08)*

**FT Made - 5 (Two times)**

*Most recently, at Radford (02-01-10)*

**FT Attempts - 6 (Two times)**

*Most recently, at Radford (02-01-10)*

**Rebounds - 8 (Two times)**

*Most recently, at G.-Webb (01-02-10)*

**Assists - 8**

*vs. High Point (03-15-08)*

**Steals - 4 (Two times)**

*Most recently, vs. UNCA (01-18-10)*

**Blocks - 1 (Eight times)**

*Most recently, vs. Longwood (01-12-10)*

**2009-10 Game-By-Game Statistics**

OPPONENT	DATE	MIN	FG-FGA	3FG-FGA	FT-FTA	OFF-DEF-TOT	A	TO	BLK	STL	PTS
Winston-Salem St.	11-13-09	25	3-5	0-1	2-2	1-0-1	2	0	0	2	8
UNC Greensboro	11-17-09	25	1-7	0-3	0-0	0-1-1	2	3	0	2	2
Tulane	11-20-09	23	3-4	0-0	3-5	0-2-2	2	2	0	0	9
Navy	11-21-09	18	3-4	0-0	0-2	1-1-2	0	1	0	0	6
Lafayette	11-28-09	18	1-4	0-0	2-2	0-1-1	0	1	0	1	4
James Madison	12-01-09	23	3-6	0-3	2-2	0-1-1	0	4	0	1	8
Glensville St.	12-05-09	18	2-6	0-0	2-4	1-1-2	7	2	0	2	6
Auburn	12-15-09	22	0-6	0-0	2-2	0-1-1	1	1	0	0	2
Cornell	12-28-09	17	1-2	1-1	0-0	0-0-0	0	2	0	0	3
Virginia	12-29-09	19	2-2	0-0	1-1	0-2-2	0	3	0	0	5
Gardner-Webb	01-02-10	32	2-4	0-0	2-2	2-6-8	2	4	0	0	6
N.C. A&T	01-05-10	25	1-8	0-0	2-2	2-0-2	1	0	0	1	4
Winthrop	01-09-10	20	2-3	0-0	0-0	1-2-3	2	0	0	1	4
Longwood	01-12-10	27	2-6	0-0	1-2	0-2-2	4	2	1	0	5
Presbyterian	01-16-10	20	4-6	1-1	2-2	1-2-3	1	0	0	2	11
UNC Asheville	01-18-10	23	3-7	2-3	2-2	1-4-5	3	0	0	4	10
Charleston So.	01-23-10	29	0-3	0-0	3-4	1-1-2	1	1	0	0	3
Coastal Carolina	01-25-10	30	1-5	0-0	0-0	2-1-3	2	2	0	1	2
High Point	01-30-10	32	0-3	0-1	2-2	1-0-1	2	3	0	0	2
Radford	02-01-10	21	2-4	0-0	5-6	0-1-1	2	1	0	1	9
N.C. Central	02-04-10	30	3-8	0-0	0-0	2-2-4	1	1	0	0	6
Gardner-Webb	02-08-10	33	4-7	1-2	0-0	2-0-2	3	2	0	2	9
Winthrop	02-15-10	28	1-4	0-2	1-2	2-2-4	1	1	0	3	3
Coastal Carolina	02-20-10	24	0-2	0-0	0-0	0-2-2	3	1	0	0	0
Charleston So.	02-22-10	27	2-4	0-0	0-0	1-1-2	1	0	0	1	4
UNC Asheville	02-27-10	19	0-4	0-0	2-2	1-0-1	4	0	0	2	2
Presbyterian	03-01-10	26	1-6	1-1	0-0	2-1-3	0	2	0	2	3
Radford	03-05-10	17	0-2	0-1	0-0	1-1-2	2	3	0	1	0
High Point	03-08-10	19	1-3	0-0	1-2	0-2-2	2	1	0	0	3

**2009-10 Notes/Highlights**

-- Scored in double figures in back-to-back games for the first time in her career, Jan. 16 vs. Presbyterian and Jan. 18 vs. UNC Asheville.

**Career Stats**

Season	GP	GS	Min	Avg	FG	FGA	Pct	3FG	3FGA	Pct	FT	FTA	Pct	ORB	DRB	TOT	Avg	Asst	TO	Blk	Stl	Pts	Avg
2007-08	32	0	531	16.6	50	108	.463	12	33	.364	27	41	.659	10	46	56	1.8	66	60	4	25	139	4.3
2008-09	30	5	622	20.7	39	120	.325	9	34	.265	34	45	.756	11	60	71	2.4	73	82	3	29	121	4.0
2009-10	29	29	690	23.8	48	135	.356	6	19	.316	37	48	.771	25	40	65	2.2	51	43	1	29	139	4.8
<b>TOTAL</b>	<b>91</b>	<b>34</b>	<b>1843</b>	<b>20.3</b>	<b>137</b>	<b>363</b>	<b>.377</b>	<b>27</b>	<b>86</b>	<b>.314</b>	<b>98</b>	<b>134</b>	<b>.731</b>	<b>46</b>	<b>146</b>	<b>192</b>	<b>2.1</b>	<b>190</b>	<b>185</b>	<b>8</b>	<b>83</b>	<b>399</b>	<b>4.4</b>



**# 40**

**Devon Brown**

*5-10 R-Freshman G  
Waynesboro, Va.  
Waynesboro HS*

**Season/Career Highs**

*Points - 29*

*at High Point (01-30-10)*

*FG Made - 12*

*at High Point (01-30-10)*

*FG Attempts - 18*

*vs. Gardner-Webb (02-08-10)*

*3FG Made - 3 (Five times)*

*Most recently, vs. High Point (03-08-10)*

*3FG Attempts - 6 (Three times)*

*Most recently, vs. CSU (02-22-10)*

*FT Made - 8 (Two times)*

*Most recently, at Radford (02-01-10)*

*FT Attempts - 9 (Three times)*

*Most recently, at Presby. (03-01-10)*

*Rebounds - 13 (Four times)*

*Most recently, vs. G.-Webb (02-08-10)*

*Assists - 4 (Two times)*

*Most recently, at CSU (01-23-10)*

*Steals - 5 (Two times)*

*Most recently, vs. Coastal (02-20-10)*

*Blocks - 2 (Four times)*

*Most recently, at High Point (01-30-10)*

**2009-10 Game-By-Game Statistics**

OPPONENT	DATE	MIN	FG-FGA	3FG-FGA	FT-FTA	OFF-DEF-TOT	A	TO	BLK	STL	PTS
Winston-Salem St.	11-13-09	22	11-14	3-5	1-1	4-3-7	1	2	0	0	26
UNC Greensboro	11-17-09	30	11-15	1-2	3-7	4-5-9	2	3	0	3	26
Tulane	11-20-09	32	6-13	3-4	3-6	3-9-12	1	2	2	1	18
Navy	11-21-09	33	4-13	3-5	8-9	3-8-11	2	1	0	5	19
Lafayette	11-28-09	20	8-14	1-3	0-0	2-1-3	4	2	0	1	17
James Madison	12-01-09	34	1-16	0-3	7-8	4-9-13	0	6	0	1	9
Glenville St.	12-05-09	18	8-11	0-1	4-6	2-7-9	2	1	0	0	20
Auburn	12-15-09	37	7-9	2-3	3-3	0-8-8	0	3	1	0	19
Cornell	12-28-09	23	8-14	1-3	1-3	1-5-6	1	2	1	2	18
Virginia	12-29-09	25	4-13	1-6	0-0	1-5-6	0	4	2	3	9
Gardner-Webb	01-02-10	31	2-11	1-4	4-4	3-8-11	0	2	0	3	9
N.C. A&T	01-05-10	32	6-15	1-5	4-7	4-9-13	3	3	1	2	17
Winthrop	01-09-10	23	8-16	2-6	3-3	1-5-6	1	1	0	2	21
Longwood	01-12-10	30	5-17	0-4	6-6	6-7-13	3	4	2	3	16
Presbyterian	01-16-10	21	5-8	3-5	0-0	1-4-5	3	1	1	2	13
UNC Asheville	01-18-10	25	5-10	2-4	0-0	2-6-8	2	4	1	0	12
Charleston So.	01-23-10	32	4-7	1-3	2-5	2-4-6	4	4	0	3	11
Coastal Carolina	01-25-10	29	6-16	1-3	4-4	2-8-10	1	1	1	4	17
High Point	01-30-10	39	12-17	0-3	5-8	1-10-11	2	4	2	1	29
Radford	02-01-10	32	6-12	0-3	8-9	3-8-11	1	2	0	3	20
N.C. Central	02-04-10	27	4-6	2-4	0-0	2-4-6	0	1	0	0	10
Gardner-Webb	02-08-10	37	5-18	1-4	2-2	4-9-13	1	3	0	2	13
Winthrop	02-15-10	20	7-16	1-5	0-0	3-2-5	2	2	0	1	15
Coastal Carolina	02-20-10	31	6-14	0-2	2-5	3-3-6	1	2	0	5	14
Charleston So.	02-22-10	33	7-16	1-6	5-6	4-8-12	2	6	1	2	20
UNC Asheville	02-27-10	22	5-9	2-2	0-3	3-2-5	2	2	0	3	12
Presbyterian	03-01-10	24	4-8	0-1	7-9	2-3-5	0	0	0	3	15
Radford	03-05-10	16	5-7	0-2	0-0	1-5-6	0	3	0	0	10
High Point	03-08-10	24	8-10	3-4	4-6	4-5-9	1	1	0	0	23

**2009-10 Notes/Highlights**

-- Earned her second Big South Player of the Week award this season on Feb. 2, after posting 24.5 ppg and 11.0 rpg during Liberty's wins at High Point and Radford.

-- Previously named Big South Player of the Week on Nov. 24, becoming the first Liberty freshman to capture the award since Megan Frazee (twice in 2005-06).

-- Ranks in the top 10 of seven different Big South statistical categories, including scoring (1st-16.5 ppg), defensive rebounds (1st-5.9 rpg), rebounding (3rd-8.4 rpg), field goal percentage (4th-.488), free throw percentage (7th-.717), offensive rebounds (7th-2.6 rpg) and steals (9th-1.9 spg).

-- Her 26 points versus Winston-Salem State (Nov. 13) equaled the Lady Rams' point total and were the most points by a Lady Flame in her collegiate debut since Elena Kisseleva scored 30 points versus Bluefield on Nov. 23, 1996.

-- Outscored Navy during the second half of the Navy Classic championship game (Nov. 21), 14-11. She was named the Championship Game All-Star, after tallying 19 points, 11 rebounds and a career-high five steals.

-- Has posted nine double-doubles this season.

-- Has scored in double figures in 18 consecutive games.

-- Has grabbed five or more rebounds in 24 straight games.

**Career Stats**

Season	GP	GS	Min	Avg	FG	FGA	Pct	3FG	3FGA	Pct	FT	FTA	Pct	ORB	DRB	TOT	Avg	Asst	TO	Blk	Stl	Pts	Avg
2009-10	29	29	802	27.7	178	365	.488	36	105	.343	86	120	.717	75	170	245	8.4	42	72	15	55	478	16.5



**# 43**

**Kittery Maine**

*6-4 Junior Forward*

*Bonaire, Ga.*

*Warner Robins HS*

**Career Highs**

**Points - 12**

*vs. Saint Paul's (12-13-08)*

**FG Made - 5**

*vs. Saint Paul's (12-13-08)*

**FG Attempts - 8**

*vs. Saint Paul's (12-13-08)*

**3FG Made - 0**

*None*

**3FG Attempts - 0**

*None*

**FT Made - 3**

*vs. Charleston So. (02-18-08)*

**FT Attempts - 4**

*vs. Charleston So. (02-18-08)*

**Rebounds - 7**

*vs. Saint Paul's (12-13-08)*

**Assists - 1 (Six times)**

*Most recently, vs. Radford (02-02-09)*

**Steals - 1 (Five times)**

*Most recently, vs. Winthrop (02-16-09)*

**Blocks - 3 (Two times)**

*Most recently, at W. Carolina (11-22-08)*

## 2009-10 Game-By-Game Statistics

OPPONENT	DATE	MIN	FG-FGA	3FG-FGA	FT-FTA	OFF-DEF-TOT	A	TO	BLK	STL	PTS
Winston-Salem St.	11-13-09										Did not play
UNC Greensboro	11-17-09										Did not play
Tulane	11-20-09										Did not play
Navy	11-21-09										Did not play
Lafayette	11-28-09										Did not play
James Madison	12-01-09										Did not play
Glenville St.	12-05-09										Did not play
Auburn	12-15-09										Did not play
Cornell	12-28-09										Did not play
Virginia	12-29-09										Did not play
Gardner-Webb	01-02-10										Did not play
N.C. A&T	01-05-10										Did not play
Winthrop	01-09-10										Did not play
Longwood	01-12-10										Did not play
Presbyterian	01-16-10										Did not play
UNC Asheville	01-18-10										Did not play
Charleston So.	01-23-10										Did not play
Coastal Carolina	01-25-10										Did not play
High Point	01-30-10										Did not play
Radford	02-01-10										Did not play
N.C. Central	02-04-10										Did not play
Gardner-Webb	02-08-10										Did not play
Winthrop	02-15-10										Did not play
Coastal Carolina	02-20-10										Did not play
Charleston So.	02-22-10										Did not play
UNC Asheville	02-27-10										Did not play
Presbyterian	03-01-10										Did not play
Radford	03-05-10										Did not play
High Point	03-08-10										Did not play

## 2009-10 Notes/Highlights

-- Has missed the first 29 games of the 2009-10 season, due to a knee injury.

## Career Stats

Season	GP	GS	Min	Avg	FG	FGA	Pct	3FG	3FGA	Pct	FT	FTA	Pct	ORB	DRB	TOT	Avg	Asst	TO	Blk	Stl	Pts	Avg
2007-08	28	0	202	7.2	22	30	.733	0	0	.000	10	18	.556	13	28	41	1.5	3	18	6	3	54	1.9
2008-09	24	0	197	8.2	20	41	.488	0	0	.000	2	4	.500	17	30	47	2.0	3	12	7	2	42	1.8
<b>TOTAL</b>	<b>52</b>	<b>0</b>	<b>399</b>	<b>7.7</b>	<b>42</b>	<b>71</b>	<b>.592</b>	<b>0</b>	<b>0</b>	<b>.000</b>	<b>12</b>	<b>22</b>	<b>.545</b>	<b>30</b>	<b>58</b>	<b>88</b>	<b>1.7</b>	<b>6</b>	<b>30</b>	<b>13</b>	<b>5</b>	<b>96</b>	<b>1.8</b>



**# 54**

**Carra Coy**

*6-6 Freshman Forward  
Summerville, S.C.  
Northwood Academy*

**Season/Career Highs**

**Points - 3 (Four times)**

*Most recently, at UNCA (02-27-10)*

**FG Made - 1 (Eight times)**

*Most recently, vs. Coastal (02-20-10)*

**FG Attempts - 4 (Two times)**

*at Winthrop (02-15-10)*

**3FG Made - 0**

*None*

**3FG Attempts - 0**

*None*

**FT Made - 3**

*at UNC Asheville (02-27-10)*

**FT Attempts - 4**

*at UNC Asheville (02-27-10)*

**Rebounds - 4 (Four times)**

*Most recently, at UNCA (02-27-10)*

**Assists - 1**

*vs. Coastal (02-20-10)*

**Steals - 1 (Two times)**

*Most recently, vs. NCCU (02-04-10)*

**Blocks - 2**

*vs. UNC Greensboro (11-17-09)*

**2009-10 Game-By-Game Statistics**

OPPONENT	DATE	MIN	FG-FGA	3FG-FGA	FT-FTA	OFF-DEF-TOT	A	TO	BLK	STL	PTS
Winston-Salem St.	11-13-09	19	1-3	0-0	1-2	0-1-1	0	2	1	0	3
UNC Greensboro	11-17-09	14	1-2	0-0	0-0	1-3-4	0	0	2	0	2
Tulane	11-20-09					Did not play					
Navy	11-21-09					Did not play					
Lafayette	11-28-09	17	1-1	0-0	0-0	0-1-1	0	1	0	1	2
James Madison	12-01-09	7	0-0	0-0	0-0	1-0-1	0	1	0	0	0
Glenville St.	12-05-09	15	0-1	0-0	2-2	1-3-4	0	3	1	0	2
Auburn	12-15-09					Did not play					
Cornell	12-28-09	15	1-2	0-0	1-2	0-2-2	0	1	1	0	3
Virginia	12-29-09					Did not play					
Gardner-Webb	01-02-10	5	0-0	0-0	0-0	0-1-1	0	1	0	0	0
N.C. A&T	01-05-10	4	1-1	0-0	0-0	0-0-0	0	0	0	0	2
Winthrop	01-09-10	9	0-4	0-0	0-0	2-1-3	0	0	1	0	0
Longwood	01-12-10	5	0-0	0-0	0-1	1-0-1	0	0	0	0	0
Presbyterian	01-16-10	15	0-1	0-0	0-1	1-1-2	0	1	1	0	0
UNC Asheville	01-18-10	10	1-1	0-0	0-0	1-0-1	0	1	1	0	2
Charleston So.	01-23-10	4	0-0	0-0	0-0	0-1-1	0	1	0	0	0
Coastal Carolina	01-25-10					Did not play					
High Point	01-30-10	1	0-0	0-0	0-0	0-0-0	0	0	0	0	0
Radford	02-01-10	6	0-0	0-0	0-2	1-0-1	0	0	0	0	0
N.C. Central	02-04-10	6	0-1	0-0	0-0	0-0-0	0	0	0	1	0
Gardner-Webb	02-08-10					Did not play					
Winthrop	02-15-10	14	1-4	0-0	0-0	3-1-4	0	0	0	0	2
Coastal Carolina	02-20-10	8	1-1	0-0	1-2	3-0-3	1	1	0	0	3
Charleston So.	02-22-10	2	0-0	0-0	0-0	0-0-0	0	0	0	0	0
UNC Asheville	02-27-10	17	0-2	0-0	3-4	3-1-4	0	0	0	0	3
Presbyterian	03-01-10	6	0-1	0-0	1-2	1-1-2	0	0	0	0	1
Radford	03-05-10	11	0-0	0-0	0-0	0-1-1	0	1	0	0	0
High Point	03-08-10	5	0-0	0-0	0-0	0-1-1	0	0	0	0	0

**2009-10 Notes/Highlights**

**Career Stats**

Season	GP	GS	Min	Avg	FG	FGA	Pct	3FG	3FGA	Pct	FT	FTA	Pct	ORB	DRB	TOT	Avg	Asst	TO	Blk	Stl	Pts	Avg
2009-10	23	0	215	9.3	8	25	.320	0	0	.000	9	18	.500	19	19	38	1.7	1	14	8	2	25	1.1



[Contact Us](#)

**Liberty (23-5)**  
**Women's Basketball National Ranking Summary**  
**Thru Games 03/07/2010**

[Back to team selections](#)[Big South - All Teams](#)

Category	Rank	Actual	National Leader	Actual
Scoring Offense (332 ranked)	106	66.3	<a href="#">Oral Roberts</a>	86.7
Scoring Defense (332 ranked)	2	48.0	<a href="#">Connecticut</a>	47.3
Scoring Margin (332 ranked)	6	18.2	<a href="#">Connecticut</a>	35.6
Field-Goal Percentage (332 ranked)	5	47.5	<a href="#">Connecticut</a>	52.1
Field-Goal Percentage Defense (332 ranked)	6	34.3	<a href="#">Connecticut</a>	30.6
Free-Throw Percentage (332 ranked)	279	64.4	<a href="#">Drexel</a>	80.6
Rebound Margin (332 ranked)	1	15.0	<a href="#">Liberty</a>	15.0
Three-Point Field Goals Per Game (332 ranked)	326	2.6	<a href="#">Middle Tenn.</a>	10.3
Three-Point Field-Goal Percentage (265 ranked)			<a href="#">Ohio St.</a>	39.6
Won-Lost Percentage (332 ranked)	19	82.1	<a href="#">Connecticut</a> <a href="#">Nebraska</a>	100.0 100.0
Assists Per Game (332 ranked)	149	12.9	<a href="#">Connecticut</a>	20.0
Blocked Shots Per Game (332 ranked)	245	2.5	<a href="#">Baylor</a>	7.3
Steals Per Game (332 ranked)	10	11.8	<a href="#">Oral Roberts</a>	15.8
Turnovers Per Game (332 ranked)	275	20.1	<a href="#">UALR</a>	12.3
Personal Fouls Per Game (332 ranked)	163	17.2	<a href="#">Connecticut</a>	12.6
Assist Turnover Ratio (332 ranked)	222	0.64	<a href="#">Connecticut</a>	1.37
Turnover Margin (332 ranked)	108	1.29	<a href="#">Georgetown</a>	8.32
Three Pt FG Defense (332 ranked)	15	27.6	<a href="#">Savannah St.</a>	24.1

Category	Player	Rank	Actual	National Leader	Actual
Points Per Game (250 ranked)	<a href="#">Devon Brown</a>	94	16.3	<a href="#">Alysha Clark, MidTen</a>	27.4
Rebounds Per Game (250 ranked)	<a href="#">Avery Warley</a> <a href="#">Devon Brown</a>	66 79	8.7 8.4	<a href="#">Judie Lomax, Clmbia</a>	14.2
Assists Per Game (250 ranked)	<a href="#">Amber Mays</a>	134	3.9	<a href="#">Courtney Vandersloot, Gonzga</a>	9.4
Blocked Shots Per Game (250 ranked)				<a href="#">Louella Tomlinson, StMary</a>	6.3
Steals Per Game (250 ranked)	<a href="#">Amber Mays</a> <a href="#">Devon Brown</a>	85 187	2.3 2.0	<a href="#">Kevi Luper, ORobt</a>	4.5
Field-Goal Percentage (250 ranked)	<a href="#">Devon Brown</a>	67	47.9	<a href="#">Carolyn Swords, BC</a>	66.4
Free-Throw Percentage (250 ranked)				<a href="#">Kelsey Luna, Ind.St</a>	92.5
Three-Point Field-Goal Percentage (250 ranked)				<a href="#">Brigid Mulroy, Dtroit</a>	52.4
Three-Point Field Goals Per Game (250 ranked)				<a href="#">Dawn Evans, JMU</a>	3.9
Double Doubles (30 ranked)				<a href="#">Siarre Evans, E.Tenn</a>	21.0
Triple Doubles (30 ranked)				<a href="#">Brittney Griner, Baylor</a>	3.0
Assist Turnover Ratio (250 ranked)	<a href="#">Amber Mays</a>	161	1.23	<a href="#">Alison Lacey, IowaSt</a>	3.21
Double Doubles (30 ranked)				<a href="#">Judie Lomax, Clmbia</a>	21.0
Triple Doubles (30 ranked)				<a href="#">Louella Tomlinson, StMary</a>	3.0



Official Basketball Box Score -- Game Totals -- Final Statistics  
**High Point vs Liberty**  
 03-08-10 7:05 p.m. at Lynchburg, Va. (Vines Center)



**High Point 48 • 16-13, 9-7 BSC**

#	Player	f/c/g	Total			3-Ptr			Rebounds			PF	TP	A	TO	Blk	Stl	Min
			FG-FGA	FG-FGA	FT-FTA	FG-FGA	FG-FGA	FT-FTA	Off	Def	Tot							
44	MAIER, Mackenzie	f	1-10	0-4	2-2	1	2	3	2	4	0	2	0	0	0	22		
54	SAMUELS, Ashlee'	c	1-2	0-0	0-2	2	1	3	2	2	0	1	2	0	23			
02	DEAN, LaTeisha	g	3-5	1-1	1-2	1	0	1	1	8	1	4	0	1	21			
13	FIELDS, Frances	g	2-10	0-0	5-6	1	3	4	4	9	3	2	0	2	26			
24	DODD, Amy	g	1-5	1-3	0-0	1	1	2	2	3	2	5	0	3	26			
03	REYNOLDS, Erin		2-3	1-2	0-0	1	2	3	1	5	0	0	0	0	14			
04	HARGRAVES, Jurica		1-6	1-5	2-2	0	0	0	1	5	1	1	0	0	20			
20	WHITT, Laura		1-1	1-1	0-0	0	0	0	2	3	1	5	0	1	14			
22	CROMARTIE, Jazmin		0-1	0-0	0-2	0	0	0	0	0	0	0	0	0	10			
31	BROWN, Shamia		4-4	0-0	1-2	3	1	4	2	9	0	0	1	1	24			
Team						2	6	8				1						
Totals			16-47	5-16	11-18	12	16	28	17	48	8	21	3	8	200			

FG % 1st Half: 9-24 37.5% 2nd half: 7-23 30.4% Game: 16-47 34.0% Deadball Rebounds 3  
 3FG % 1st Half: 3-8 37.5% 2nd half: 2-8 25.0% Game: 5-16 31.3%  
 FT % 1st Half: 4-6 66.7% 2nd half: 7-12 58.3% Game: 11-18 61.1%

**Liberty 73 • 24-5, 14-2 BSC**

#	Player	f/c/g	Total			3-Ptr			Rebounds			PF	TP	A	TO	Blk	Stl	Min
			FG-FGA	FG-FGA	FT-FTA	FG-FGA	FG-FGA	FT-FTA	Off	Def	Tot							
15	BEECHER, Kylee	f	2-5	0-0	0-0	2	1	3	1	4	1	2	0	0	24			
23	WARLEY, Avery	f	6-13	0-0	1-1	3	5	8	1	13	1	1	3	2	27			
21	MAYS, Amber	g	4-7	0-1	2-2	0	0	0	3	10	5	3	0	2	26			
32	McLEOD, Rachel	g	1-3	0-0	1-2	0	2	2	0	3	2	1	0	0	19			
40	BROWN, Devon	g	8-10	3-4	4-6	4	5	9	1	23	1	1	0	0	24			
01	WASHINGTON, LaKendra		1-5	0-2	0-0	0	0	0	1	2	1	1	0	2	18			
11	ANTIC, Jelena		6-6	0-0	1-2	1	1	2	3	13	1	2	0	1	22			
12	DALE, Danika		1-2	0-0	2-2	1	6	7	1	4	1	2	0	1	21			
25	MORGAN, Dymond		0-4	0-0	1-3	2	0	2	1	1	0	1	0	1	14			
54	COY, Carra		0-0	0-0	0-0	0	1	1	2	0	0	0	0	5				
Team						0	1	1										
Totals			29-55	3-7	12-18	13	22	35	14	73	13	14	3	9	200			

FG % 1st Half: 13-25 52.0% 2nd half: 16-30 53.3% Game: 29-55 52.7% Deadball Rebounds 3,1  
 3FG % 1st Half: 2-4 50.0% 2nd half: 1-3 33.3% Game: 3-7 42.9%  
 FT % 1st Half: 5-9 55.6% 2nd half: 7-9 77.8% Game: 12-18 66.7%

Officials: Susan Blauch (R), Tony Lippa, Karl Gildner  
 Technical fouls: High Point-TEAM. Liberty-None.  
 Attendance: 809

Score by periods	1st	2nd	Total
High Point	25	23	48
Liberty	33	40	73

	In Paint	Off T/O	2nd Chance	Fast Break	Bench
Points					
HPU	16	10	12	6	22
LIBERTY	48	25	16	2	20

Last FG - HPU 2nd-04:51, LIBERTY 2nd-00:29.  
 Largest lead - HPU by 2 1st-19:22, LIBERTY by 25 2nd-00:29.

Score tied - 2 times.  
 Lead changed - 3 times.



Official Basketball Box Score -- Game Totals -- Final Statistics  
**Liberty vs Radford**  
 02-01-10 7:00 pm at Dedmon Center (Radford, Va.)



**Liberty 63 • 16-4, 7-1 BSC**

#	Player	f/g	Total			3-Ptr			Rebounds			PF	TP	A	TO	Blk	Stl	Min
			FG-FGA	FG-FGA	FT-FTA	FG-FGA	FG-FGA	FT-FTA	Off	Def	Tot							
15	BEECHER, Kylee	f	5-8	0-0	3-4	0-0	0-0	3	6	9	2	13	0	4	0	3	38	
23	WARLEY, Avery	f	2-4	0-0	0-0	0-0	0-0	1	4	5	4	4	0	1	2	1	24	
40	BROWN, Devon	f	6-12	0-3	8-9	0-3	0-3	3	8	11	1	20	1	2	0	3	32	
21	MAYS, Amber	g	4-6	0-0	2-4	0-0	0-0	1	0	1	3	10	7	5	0	3	24	
32	McLEOD, Rachel	g	2-4	0-0	5-6	0-0	0-0	0	1	1	1	9	2	1	0	1	21	
01	WASHINGTON, LaKendra		0-0	0-0	0-0	0-0	0-0	0	0	0	1	0	1	3	0	0	18	
12	DALE, Danika		1-2	0-0	0-0	0-0	0-0	0	1	1	0	2	0	1	2	1	20	
25	MORGAN, Dymond		1-5	0-0	3-4	0-0	0-0	1	2	3	2	5	1	3	0	3	17	
54	COY, Carra		0-0	0-0	0-2	0-0	0-0	1	0	1	1	0	0	0	0	0	6	
Team								3	1	4				4				
Totals			21-41	0-3	21-29	0-3	0-3	13	23	36	15	63	12	24	4	15	200	

FG % 1st Half: 12-21 57.1% 2nd half: 9-20 45.0% Game: 21-41 51.2% Deadball Rebounds 5  
 3FG % 1st Half: 0-0 0.0% 2nd half: 0-3 0.0% Game: 0-3 0.0%  
 FT % 1st Half: 6-7 85.7% 2nd half: 15-22 68.2% Game: 21-29 72.4%

**Radford 45 • 5-14, 4-4 BSC**

#	Player	f/g	Total			3-Ptr			Rebounds			PF	TP	A	TO	Blk	Stl	Min
			FG-FGA	FG-FGA	FT-FTA	FG-FGA	FG-FGA	FT-FTA	Off	Def	Tot							
23	ALSTON, Kymesha	f	2-8	0-0	3-6	0-0	0-0	1	1	2	4	7	0	1	0	0	25	
32	VICK, Kahealani	f	0-1	0-0	1-2	0-0	0-0	2	1	3	4	1	0	1	1	2	18	
11	WOOD, Denay	g	3-10	1-5	0-0	1-5	0-0	3	2	5	4	7	1	3	0	1	32	
14	HAMILTON, Victoria	g	1-4	0-0	1-1	0-0	0-0	2	0	2	1	3	1	6	0	2	23	
22	ERWINSPENCER, Da'Nar	g	2-8	0-0	6-6	0-0	0-0	0	1	1	0	10	3	9	1	0	27	
15	BUCKHANNON, Ashley		4-11	1-6	0-0	1-6	0-0	2	0	2	2	9	2	0	0	2	28	
21	TABB, Sarah		0-0	0-0	0-0	0-0	0-0	0	0	0	0	0	0	0	0	0	2	
25	KINLAW, Jewell		1-3	0-0	1-2	0-0	0-0	3	2	5	2	3	1	1	0	0	15	
30	BROCKETT, Katherine		1-1	1-1	0-0	1-1	0-0	0	0	0	1	3	0	1	0	0	3	
31	CROSIER, Kaylyn		1-2	0-0	0-0	0-0	0-0	0	0	0	2	2	0	0	0	0	9	
42	RESKOSKA, Ema		0-3	0-0	0-0	0-0	0-0	1	1	2	1	0	0	1	1	0	18	
Team								2	2	4								
Totals			15-51	3-12	12-17	3-12	3-12	16	10	26	21	45	8	23	3	7	200	

FG % 1st Half: 6-24 25.0% 2nd half: 9-27 33.3% Game: 15-51 29.4% Deadball Rebounds 2  
 3FG % 1st Half: 1-5 20.0% 2nd half: 2-7 28.6% Game: 3-12 25.0%  
 FT % 1st Half: 2-6 33.3% 2nd half: 10-11 90.9% Game: 12-17 70.6%

Officials: Jen Rezak, Dan Outlaw, Margo Riddle  
 Technical fouls: Liberty-None. Radford-None.  
 Attendance: 384

Score by periods	1st	2nd	Total
Liberty	30	33	63
Radford	15	30	45

	In	Off	2nd	Fast	
Points	Paint	T/O	Chance	Break	Bench
LIBERTY	36	27	10	10	7
RADFORD	12	13	14	4	17

Last FG - LIBERTY 2nd-00:39, RADFORD 2nd-01:20.  
 Largest lead - LIBERTY by 18 2nd-07:09, RADFORD by 2 1st-19:08.

Score tied - 2 times.  
 Lead changed - 1 time.



Official Basketball Box Score -- Game Totals -- Final Statistics  
**Radford vs Liberty**  
 03-05-10 7:05 p.m. at Lynchburg, Va. (Vines Center)



**Radford 33 • 6-21, 5-11 BSC**

#	Player	f/c/g	Total			3-Ptr			Rebounds			PF	TP	A	TO	Blk	Stl	Min
			FG-FGA	FG-FGA	FT-FTA	FG-FGA	FG-FGA	FT-FTA	Off	Def	Tot							
23	ALSTON, Kymesha	f	1-6	0-0	2-3	0-0	0-0	2	0	2	0	4	1	4	0	1	28	
42	RESKOSKA, Ema	c	2-6	0-0	1-2	0-0	0-0	5	0	5	3	5	0	5	2	4	27	
14	HAMILTON, Victoria	g	0-7	0-2	0-0	0-0	0-0	2	4	6	1	0	1	2	0	3	33	
15	BUCKHANNON, Ashley	g	2-8	0-2	2-2	0-0	0-0	1	0	1	0	6	0	3	0	0	23	
31	CROSIER, Kaylyn	g	3-12	2-7	0-1	0-0	0-0	0	2	2	4	8	2	5	0	1	36	
11	WOOD, Denay		3-4	2-2	0-0	0-0	0-0	0	0	0	3	8	0	1	0	0	14	
21	TABB, Sarah		0-3	0-0	0-0	0-0	0-0	1	1	2	1	0	0	1	0	2	13	
25	KINLAW, Jewell		0-0	0-0	0-0	0-0	0-0	0	0	0	2	0	1	1	0	0	8	
30	BROCKETT, Katherine		1-5	0-3	0-0	0-0	0-0	0	0	0	0	2	1	1	0	0	14	
32	VICK, Kahealani		0-0	0-0	0-0	0-0	0-0	0	0	0	0	0	0	0	0	1	4	
Team								3	2	5								
Totals			12-51	4-16	5-8			14	9	23	14	33	6	23	2	12	200	

FG % 1st Half: 7-31 22.6% 2nd half: 5-20 25.0% Game: 12-51 23.5% Deadball Rebounds  
 3FG % 1st Half: 3-10 30.0% 2nd half: 1-6 16.7% Game: 4-16 25.0% 1  
 FT % 1st Half: 0-2 0.0% 2nd half: 5-6 83.3% Game: 5-8 62.5%

**Liberty 66 • 23-5, 13-2 BSC**

#	Player	f/c/g	Total			3-Ptr			Rebounds			PF	TP	A	TO	Blk	Stl	Min
			FG-FGA	FG-FGA	FT-FTA	FG-FGA	FG-FGA	FT-FTA	Off	Def	Tot							
15	BEECHER, Kylee	f	1-5	0-0	2-2	0-0	0-0	0	2	2	1	4	1	2	0	0	24	
23	WARLEY, Avery	f	7-9	0-0	3-4	0-0	0-0	6	6	12	0	17	0	2	1	0	22	
21	MAYS, Amber	g	2-5	0-0	0-0	0-0	0-0	1	1	2	2	4	2	1	0	2	16	
32	McLEOD, Rachel	g	0-2	0-1	0-0	0-0	0-0	1	1	2	0	0	2	3	0	1	17	
40	BROWN, Devon	g	5-7	0-2	0-0	0-0	0-0	1	5	6	4	10	0	3	0	0	16	
01	WASHINGTON, LaKendra		5-5	0-0	4-6	0-0	0-0	0	1	1	1	14	1	3	0	3	27	
11	ANTIC, Jelena		4-9	0-0	4-6	0-0	0-0	5	3	8	2	12	2	1	1	0	22	
12	DALE, Danika		2-5	0-1	0-0	0-0	0-0	1	3	4	0	4	2	4	0	5	24	
25	MORGAN, Dymond		0-4	0-0	1-2	0-0	0-0	0	1	1	3	1	2	3	0	4	21	
54	COY, Carra		0-0	0-0	0-0	0-0	0-0	0	1	1	1	0	0	1	0	0	11	
Team								4	3	7								
Totals			26-51	0-4	14-20			19	27	46	14	66	12	23	2	15	200	

FG % 1st Half: 11-25 44.0% 2nd half: 15-26 57.7% Game: 26-51 51.0% Deadball Rebounds  
 3FG % 1st Half: 0-2 0.0% 2nd half: 0-2 0.0% Game: 0-4 0.0% 3  
 FT % 1st Half: 7-8 87.5% 2nd half: 7-12 58.3% Game: 14-20 70.0%

Officials: John Almarode (R), Tom Baldinelli, Scott Whitt  
 Technical fouls: Radford-None. Liberty-None.  
 Attendance: 1136

Score by periods	1st	2nd	Total
Radford	17	16	33
Liberty	29	37	66

	In	Off	2nd	Fast	
Points	Paint	T/O	Chance	Break	Bench
RADFORD	8	13	8	0	10
LIBERTY	48	25	18	6	31

Last FG - RADFORD 2nd-04:34, LIBERTY 2nd-02:06.  
 Largest lead - RADFORD None, LIBERTY by 34 2nd-01:48.

Score tied - 1 time.  
 Lead changed - 0 times.





**2009-10 Liberty Women's Basketball**  
**Liberty Game-by-Game Highs (as of Mar 10, 2010)**  
**All games**



Opponent	Date	Score	Points	Rebounds	Assists	Steals	Blocked shots
WINSTON-SALEM STATE	11-13-09	71-26	26-BROWN, Devon	9-WARLEY, Avery	6-MAYS, Amber	5-WASHINGTON, La	2-DALE, Danika
UNC GREENSBORO	11-17-09	60-42	26-BROWN, Devon	9-BROWN, Devon	4-MAYS, Amber	4-MAYS, Amber	2-COY, Carra DALE, Danika
vs Tulane	11-20-09	63-52	18-BROWN, Devon	12-BROWN, Devon	3-MAYS, Amber	4-MAYS, Amber	2-BROWN, Devon
at Navy	11-21-09	55-43	19-BROWN, Devon	11-BROWN, Devon	5-MAYS, Amber	5-BROWN, Devon	None
at Lafayette	11-28-09	90-55	21-WASHINGTON, La	11-WARLEY, Avery	4-BROWN, Devon MAYS, Amber	4-WASHINGTON, La MAYS, Amber	1-BEECHER, Kylee
JAMES MADISON	12-01-09	50-60	14-MAYS, Amber	13-BROWN, Devon	2-MAYS, Amber WARLEY, Avery	2-BEECHER, Kylee	2-DALE, Danika
GLENVILLE STATE	12-05-09	86-45	20-BROWN, Devon	10-ANTIC, Jelena	7-McLEOD, Rachel MORGAN, Dymond	3-DALE, Danika	1-WARLEY, Avery COY, Carra
at Auburn	12-15-09	64-70	19-BROWN, Devon	8-BROWN, Devon	3-MAYS, Amber	4-MAYS, Amber	1-BROWN, Devon
vs Cornell	12-28-09	70-40	18-BROWN, Devon	8-ANTIC, Jelena	8-MAYS, Amber	4-MAYS, Amber	1-COY, Carra WARLEY, Avery BROWN, Devon WASHINGTON, LaK
at Virginia	12-29-09	54-63	12-WARLEY, Avery	8-WARLEY, Avery	3-ANTIC, Jelena MAYS, Amber	3-BROWN, Devon MAYS, Amber	2-BROWN, Devon
at Gardner-Webb	01-02-10	65-70	10-DALE, Danika ANTIC, Jelena MAYS, Amber WARLEY, Avery	11-BROWN, Devon	6-MAYS, Amber	3-BROWN, Devon WARLEY, Avery	1-WARLEY, Avery
NORTH CAROLINA A&T	01-05-10	57-51	17-BROWN, Devon	13-BROWN, Devon	4-ANTIC, Jelena	3-MORGAN, Dymond	1-BEECHER, Kylee BROWN, Devon ANTIC, Jelena
WINTHROP	01-09-10	67-38	21-BROWN, Devon	6-BROWN, Devon ANTIC, Jelena	10-MAYS, Amber	3-WASHINGTON, La	1-WARLEY, Avery BEECHER, Kylee COY, Carra
LONGWOOD	01-12-10	78-55	19-ANTIC, Jelena	13-BROWN, Devon	4-McLEOD, Rachel	5-MAYS, Amber	2-BROWN, Devon
PRESBYTERIAN COLLEGE	01-16-10	73-27	14-ANTIC, Jelena	5-BROWN, Devon DALE, Danika	6-MAYS, Amber	5-MORGAN, Dymond	1-BROWN, Devon COY, Carra
UNC ASHEVILLE	01-18-10	82-40	14-BEECHER, Kylee MAYS, Amber	10-WARLEY, Avery	6-MORGAN, Dymond	4-WASHINGTON, La McLEOD, Rachel MORGAN, Dymond	3-WARLEY, Avery
at Charleston Southern	01-23-10	65-52	18-WARLEY, Avery	16-WARLEY, Avery	4-BROWN, Devon	3-BROWN, Devon	1-MAYS, Amber
at Coastal Carolina	01-25-10	57-38	17-BROWN, Devon	12-WARLEY, Avery	2-McLEOD, Rachel MAYS, Amber DALE, Danika	4-BROWN, Devon	1-WARLEY, Avery BROWN, Devon DALE, Danika
at High Point	01-30-10	75-62	29-BROWN, Devon	14-WARLEY, Avery	2-MAYS, Amber BEECHER, Kylee McLEOD, Rachel BROWN, Devon	3-MORGAN, Dymond	2-BROWN, Devon
at Radford	02-01-10	63-45	20-BROWN, Devon	11-BROWN, Devon	7-MAYS, Amber	3-BROWN, Devon MAYS, Amber BEECHER, Kylee MORGAN, Dymond	2-WARLEY, Avery DALE, Danika
N.C. CENTRAL	02-04-10	64-44	16-WARLEY, Avery	11-WARLEY, Avery	8-MAYS, Amber	3-WASHINGTON, La	1-WASHINGTON, La WARLEY, Avery DALE, Danika
GARDNER-WEBB	02-08-10	56-59	15-WARLEY, Avery	13-BROWN, Devon	3-MAYS, Amber McLEOD, Rachel	2-McLEOD, Rachel BROWN, Devon MAYS, Amber	2-WARLEY, Avery
at Winthrop	02-15-10	52-18	15-BROWN, Devon	8-WARLEY, Avery	2-BROWN, Devon	3-WASHINGTON, La	3-WARLEY, Avery



2009-10 Liberty Women's Basketball  
 Liberty Game-by-Game Highs (as of Mar 10, 2010)  
 All games



Opponent	Date	Score	Points	Rebounds	Assists	Steals	Blocked shots
COASTAL CAROLINA	02-20-10	57-55	14-BROWN, Devon	8-WARLEY, Avery	3-McLEOD, Rachel	McLEOD, Rachel 5-BROWN, Devon	1-WARLEY, Avery
CHARLESTON SOUTHERN	02-22-10	66-56	22-WARLEY, Avery	12-BROWN, Devon	3-ANTIC, Jelena	3-WARLEY, Avery MORGAN, Dymond	1-BROWN, Devon
at UNC Asheville	02-27-10	94-66	22-WARLEY, Avery	10-WARLEY, Avery	5-MORGAN, Dymond	3-WASHINGTON, La MAYS, Amber BROWN, Devon	None
at Presbyterian College	03-01-10	55-40	15-BROWN, Devon	11-WARLEY, Avery	3-ANTIC, Jelena	3-MORGAN, Dymond BROWN, Devon MAYS, Amber ANTIC, Jelena	1-WARLEY, Avery
RADFORD	03-05-10	66-33	17-WARLEY, Avery	12-WARLEY, Avery	2-MAYS, Amber McLEOD, Rachel DALE, Danika ANTIC, Jelena MORGAN, Dymond	5-DALE, Danika	1-ANTIC, Jelena WARLEY, Avery
HIGH POINT	03-08-10	73-48	23-BROWN, Devon	9-BROWN, Devon	5-MAYS, Amber	2-WASHINGTON, La MAYS, Amber WARLEY, Avery	3-WARLEY, Avery



**2009-10 Liberty Women's Basketball**  
**Liberty Points-Rebounds-Assists (as of Mar 10, 2010)**  
**All games**



Opponent	Date	Score	01 WASHINGTON	11 ANTIC,JELE	12 DALE,DANIK	15 BEECHER,KY	21 MAYS,AMBER	23 WARLEY,AVE	25 MORGAN,DYM
WINSTON-SALEM STATE	11-13-09	71-26 w	9-2-1	DNP	6-7-3	8-2-2	7-0-6	4-9-2	0-4-1
UNC GREENSBORO	11-17-09	60-42 w	2-0-0	DNP	0-4-0	11-5-0	11-1-4	0-7-0	6-5-2
vs Tulane	11-20-09	63-52 w	2-1-0	DNP	0-1-1	6-3-2	10-2-3	9-11-1	9-2-0
at Navy	11-21-09	55-43 w	6-4-0	0-5-3	0-2-1	4-2-0	8-2-5	10-6-0	2-3-0
at Lafayette	11-28-09	90-55 w	21-0-2	4-4-2	6-4-1	5-3-2	11-4-4	19-11-0	1-0-0
JAMES MADISON	12-01-09	50-60 L	2-1-0	1-4-0	3-5-1	4-6-1	14-2-2	9-7-2	0-0-0
GLENVILLE STATE	12-05-09	86-45 w	8-5-2	12-10-0	6-9-3	14-6-0	5-2-4	7-6-0	6-7-7
at Auburn	12-15-09	64-70 L	2-1-0	4-3-1	0-0-0	7-0-1	18-1-3	10-6-0	2-2-0
vs Cornell	12-28-09	70-40 w	9-5-2	11-8-2	5-7-2	5-3-0	4-2-8	10-7-0	2-1-1
at Virginia	12-29-09	54-63 L	5-5-1	5-3-3	3-4-0	6-2-0	7-0-3	12-8-0	2-1-0
at Gardner-Webb	01-02-10	65-70 L	0-0-0	10-5-1	10-0-1	4-3-0	10-5-6	10-6-0	6-1-1
NORTH CAROLINA A&T	01-05-10	57-51 w	0-2-0	14-4-4	2-2-1	0-3-0	4-2-3	9-11-0	5-0-1
WINTHROP	01-09-10	67-38 w	5-1-1	9-6-1	4-5-3	5-2-2	3-0-10	5-5-1	11-1-1
LONGWOOD	01-12-10	78-55 w	1-2-1	19-10-2	2-4-1	10-6-1	7-0-3	12-5-1	6-3-3
PRESBYTERIAN COLLEGE	01-16-10	73-27 w	6-3-0	14-3-1	5-5-1	5-3-1	8-2-6	6-2-0	5-0-4
UNC ASHEVILLE	01-18-10	82-40 w	6-1-0	7-4-0	5-3-1	14-5-2	14-1-5	6-10-2	6-2-6
at Charleston Southern	01-23-10	65-52 w	4-1-0	DNP	3-4-2	10-9-0	14-0-3	18-16-0	2-1-0
at Coastal Carolina	01-25-10	57-38 w	7-1-0	DNP	0-4-2	6-9-1	8-2-2	15-12-0	2-0-1
at High Point	01-30-10	75-62 w	0-0-0	DNP	2-2-0	3-4-2	7-5-2	26-14-0	6-0-1
at Radford	02-01-10	63-45 w	0-0-1	DNP	2-1-0	13-9-0	10-1-7	4-5-0	5-3-1
N.C. CENTRAL	02-04-10	64-44 w	6-2-2	DNP	15-3-2	3-2-4	8-2-8	16-11-0	0-1-1
GARDNER-WEBB	02-08-10	56-59 L	0-0-1	DNP	6-0-0	4-4-2	6-1-3	15-10-0	3-0-1
at Winthrop	02-15-10	52-18 w	2-2-1	DNP	11-5-0	9-5-1	1-1-1	4-8-1	5-1-1
COASTAL CAROLINA	02-20-10	57-55 w	4-1-0	2-3-1	5-0-0	9-1-0	12-3-2	5-8-1	3-1-1
CHARLESTON SOUTHERN	02-22-10	66-56 w	0-1-0	4-6-3	1-0-0	4-2-1	6-0-0	22-10-1	5-1-2
at UNC Asheville	02-27-10	94-66 w	12-0-4	13-5-2	10-4-3	12-9-0	6-2-2	22-10-0	2-0-5
at Presbyterian College	03-01-10	55-40 w	2-2-0	6-3-3	2-3-0	2-3-0	5-1-1	13-11-0	6-0-0
RADFORD	03-05-10	66-33 w	14-1-1	12-8-2	4-4-2	4-2-1	4-2-2	17-12-0	1-1-2
HIGH POINT	03-08-10	73-48 w	2-0-1	13-2-1	4-7-1	4-3-1	10-0-5	13-8-1	1-2-0

Opponent	Date	Score	32 MCLEOD,RAC	40 BROWN,DEVO	54 COY,CARRA
WINSTON-SALEM STATE	11-13-09	71-26 w	8-1-2	26-7-1	3-1-0
UNC GREENSBORO	11-17-09	60-42 w	2-1-2	26-9-2	2-4-0
vs Tulane	11-20-09	63-52 w	9-2-2	18-12-1	DNP
at Navy	11-21-09	55-43 w	6-2-0	19-11-2	DNP
at Lafayette	11-28-09	90-55 w	4-1-0	17-3-4	2-1-0
JAMES MADISON	12-01-09	50-60 L	8-1-0	9-13-0	0-1-0
GLENVILLE STATE	12-05-09	86-45 w	6-2-7	20-9-2	2-4-0
at Auburn	12-15-09	64-70 L	2-1-1	19-8-0	DNP
vs Cornell	12-28-09	70-40 w	3-0-0	18-6-1	3-2-0
at Virginia	12-29-09	54-63 L	5-2-0	9-6-0	DNP
at Gardner-Webb	01-02-10	65-70 L	6-8-2	9-11-0	0-1-0
NORTH CAROLINA A&T	01-05-10	57-51 w	4-2-1	17-13-3	2-0-0
WINTHROP	01-09-10	67-38 w	4-3-2	21-6-1	0-3-0
LONGWOOD	01-12-10	78-55 w	5-2-4	16-13-3	0-1-0
PRESBYTERIAN COLLEGE	01-16-10	73-27 w	11-3-1	13-5-3	0-2-0
UNC ASHEVILLE	01-18-10	82-40 w	10-5-3	12-8-2	2-1-0
at Charleston Southern	01-23-10	65-52 w	3-2-1	11-6-4	0-1-0
at Coastal Carolina	01-25-10	57-38 w	2-3-2	17-10-1	DNP
at High Point	01-30-10	75-62 w	2-1-2	29-11-2	0-0-0
at Radford	02-01-10	63-45 w	9-1-2	20-11-1	0-1-0
N.C. CENTRAL	02-04-10	64-44 w	6-4-1	10-6-0	0-0-0
GARDNER-WEBB	02-08-10	56-59 L	9-2-3	13-13-1	DNP
at Winthrop	02-15-10	52-18 w	3-4-1	15-5-2	2-4-0
COASTAL CAROLINA	02-20-10	57-55 w	0-2-3	14-6-1	3-3-1
CHARLESTON SOUTHERN	02-22-10	66-56 w	4-2-1	20-12-2	0-0-0
at UNC Asheville	02-27-10	94-66 w	2-1-4	12-5-2	3-4-0
at Presbyterian College	03-01-10	55-40 w	3-3-0	15-5-0	1-2-0
RADFORD	03-05-10	66-33 w	0-2-2	10-6-0	0-1-0
HIGH POINT	03-08-10	73-48 w	3-2-2	23-9-1	0-1-0



**2009-10 Liberty Women's Basketball**  
**Liberty Player High/Low Analysis (as of Mar 10, 2010)**  
**All games**



**Liberty - INDIVIDUAL GAME HIGHS**

Points	29		BROWN, Devon at High Point (01-30-10)
	26		WARLEY, Avery at High Point (01-30-10)
	26		BROWN, Devon vs UNC Greensboro (11-17-09)
	26		BROWN, Devon vs Winston-Salem State (11-13-09)
Field Goals Made	23		BROWN, Devon vs High Point (03-08-10)
	12		BROWN, Devon at High Point (01-30-10)
	11		BROWN, Devon vs UNC Greensboro (11-17-09)
Field Goal Att.	11		BROWN, Devon vs Winston-Salem State (11-13-09)
	18		BROWN, Devon vs Gardner-Webb (02-08-10)
	17		BROWN, Devon at High Point (01-30-10)
FG Pct (min 5 made)	17		BROWN, Devon vs Longwood (01-12-10)
	1.000	(9-9)	WARLEY, Avery vs Charleston Southern (02-22-10)
	1.000	(7-7)	ANTIC, Jelena vs Presbyterian College (01-16-10)
	1.000	(6-6)	ANTIC, Jelena vs High Point (03-08-10)
3-Point FG Made	1.000	(5-5)	WASHINGTON, LaKendra vs Radford (03-05-10)
	3		BROWN, Devon vs High Point (03-08-10)
	3		BROWN, Devon vs Presbyterian College (01-16-10)
	3		BROWN, Devon at Navy (11-21-09)
3-Point FG Att.	3		BROWN, Devon vs Tulane (11-20-09)
	3		BROWN, Devon vs Winston-Salem State (11-13-09)
	6		BROWN, Devon vs Charleston Southern (02-22-10)
	6		BROWN, Devon vs Winthrop (01-09-10)
3-Pt FG Pct (min 2 made)	6		BROWN, Devon at Virginia (12-29-09)
	6		WASHINGTON, LaKendra vs Winston-Salem State (11-13-09)
	1.000	(2-2)	BROWN, Devon at UNC Asheville (02-27-10)
	1.000	(2-2)	WASHINGTON, LaKendra at Coastal Carolina (01-25-10)
Free Throws Made	1.000	(2-2)	MAYS, Amber vs UNC Asheville (01-18-10)
	1.000	(2-2)	ANTIC, Jelena at Gardner-Webb (01-02-10)
	8		BROWN, Devon at Radford (02-01-10)
	8		WARLEY, Avery at High Point (01-30-10)
Free Throw Att.	8		BEECHER, Kylee vs UNC Asheville (01-18-10)
	8		BROWN, Devon at Navy (11-21-09)
	11		WARLEY, Avery at High Point (01-30-10)
	10		BEECHER, Kylee vs UNC Asheville (01-18-10)
FT Pct (min 3 made)	1.000	(7-7)	WARLEY, Avery at Presbyterian College (03-01-10)
	1.000	(6-6)	BROWN, Devon vs Longwood (01-12-10)
	1.000	(4-4)	MORGAN, Dymond at Presbyterian College (03-01-10)
	1.000	(4-4)	BEECHER, Kylee vs Charleston Southern (02-22-10)
	1.000	(4-4)	BROWN, Devon at Coastal Carolina (01-25-10)
	1.000	(4-4)	BROWN, Devon at Gardner-Webb (01-02-10)
	1.000	(4-4)	DALE, Danika vs Winston-Salem State (11-13-09)
	1.000	(4-4)	BEECHER, Kylee vs Winston-Salem State (11-13-09)
	1.000	(3-3)	DALE, Danika at Winthrop (02-15-10)
	1.000	(3-3)	BROWN, Devon vs Winthrop (01-09-10)
	1.000	(3-3)	BROWN, Devon at Auburn (12-15-09)
	1.000	(3-3)	WARLEY, Avery at Lafayette (11-28-09)
Rebounds	16		WARLEY, Avery at Charleston Southern (01-23-10)
	14		WARLEY, Avery at High Point (01-30-10)
Assists	10		MAYS, Amber vs Winthrop (01-09-10)
	8		MAYS, Amber vs N.C. Central (02-04-10)
	8		MAYS, Amber vs Cornell (12-28-09)
Steals	5		DALE, Danika vs Radford (03-05-10)
	5		BROWN, Devon vs Coastal Carolina (02-20-10)



	5	MORGAN, Dymond vs Presbyterian College (01-16-10)
	5	MAYS, Amber vs Longwood (01-12-10)
	5	BROWN, Devon at Navy (11-21-09)
	5	WASHINGTON, LaKendra vs Winston-Salem State (11-13-09)
Blocked Shots	3	WARLEY, Avery vs High Point (03-08-10)
	3	WARLEY, Avery at Winthrop (02-15-10)
	3	WARLEY, Avery vs UNC Asheville (01-18-10)
Turnovers	8	MORGAN, Dymond vs Glenville State (12-05-09)
	7	MAYS, Amber at Virginia (12-29-09)
Fouls	5	WARLEY, Avery vs Gardner-Webb (02-08-10)
	5	MAYS, Amber at High Point (01-30-10)
	5	WARLEY, Avery vs Longwood (01-12-10)
	5	WARLEY, Avery at Gardner-Webb (01-02-10)
	5	ANTIC, Jelena at Gardner-Webb (01-02-10)
	5	MAYS, Amber at Virginia (12-29-09)
	5	WARLEY, Avery vs James Madison (12-01-09)
	5	WASHINGTON, LaKendra vs UNC Greensboro (11-17-09)



**2009-10 Liberty Women's Basketball**  
**Liberty Opponent High/Low Analysis (as of Mar 10, 2010)**  
**All games**



**OPPONENT INDIVIDUAL GAME HIGHS**

Points	22		Jackson, Lauren at Lafayette (11-28-09)
	20		MOSS, Sydnei at Coastal Carolina (01-25-10)
	19		WASMER, Kelsey vs Charleston Southern (02-22-10)
	19		MOSS, Sydnei vs Coastal Carolina (02-20-10)
	19		STULL, Amanda vs Coastal Carolina (02-20-10)
	19		Wright, Monica at Virginia (12-29-09)
Field Goals Made	7		MOSS, Sydnei vs Coastal Carolina (02-20-10)
	7		Wright, Monica at Virginia (12-29-09)
Field Goal Att.	20		MILLER, Joanna vs N.C. Central (02-04-10)
	17		MOSS, Sydnei at Coastal Carolina (01-25-10)
FG Pct (min 5 made)	.833	(5-6)	BROWN, Shamia at High Point (01-30-10)
	.833	(5-6)	SAMS, Jaleesa vs North Carolina A&T (01-05-10)
	.833	(5-6)	McCall, Telia at Virginia (12-29-09)
3-Point FG Made	5		STULL, Amanda vs Coastal Carolina (02-20-10)
	4		WASMER, Kelsey vs Charleston Southern (02-22-10)
	4		TERRY, Helen vs Charleston Southern (02-22-10)
	4		MOSS, Sydnei at Coastal Carolina (01-25-10)
	4		Smalley, Alli at Auburn (12-15-09)
	4		KALJO, Indira vs Tulane (11-20-09)
3-Point FG Att.	12		KALJO, Indira vs Tulane (11-20-09)
	11		Autumn Davis vs Glenville State (12-05-09)
3-Pt FG Pct (min 2 made)	1.000	(3-3)	HUDSON, Dominique vs Gardner-Webb (02-08-10)
	1.000	(2-2)	WOOD, Denay vs Radford (03-05-10)
	1.000	(2-2)	BLANKS, Shanise vs N.C. Central (02-04-10)
Free Throws Made	7		HUDSON, Monique at Gardner-Webb (01-02-10)
	7		Greenleaf, Jordan at Auburn (12-15-09)
	7		Hislop, Tarik vs James Madison (12-01-09)
	7		Jackson, Lauren at Lafayette (11-28-09)
Free Throw Att.	9		Hislop, Tarik vs James Madison (12-01-09)
	8		FIELDS, Frances at High Point (01-30-10)
	8		TERRY, Helen at Charleston Southern (01-23-10)
	8		MONTGOMERY, Lindsey vs UNC Asheville (01-18-10)
	8		HUDSON, Monique at Gardner-Webb (01-02-10)
	8		Greenleaf, Jordan at Auburn (12-15-09)
	8		Jackson, Lauren at Lafayette (11-28-09)
FT Pct (min 3 made)	1.000	(6-6)	ERWINSPENCER, Da'Nar at Radford (02-01-10)
	1.000	(4-4)	MONTGOMERY, Lindsey at UNC Asheville (02-27-10)
	1.000	(4-4)	STULL, Amanda vs Coastal Carolina (02-20-10)
	1.000	(4-4)	MOSS, Sydnei at Coastal Carolina (01-25-10)
	1.000	(4-4)	SCHWAGMEYER, Ali at Charleston Southern (01-23-10)
	1.000	(4-4)	HUDSON, Dominique at Gardner-Webb (01-02-10)
	1.000	(3-3)	RYSKA, Kathi at Winthrop (02-15-10)
Rebounds	10		MONTGOMERY, Lindsey at UNC Asheville (02-27-10)
	9		Consedine, Cassie at Navy (11-21-09)
Assists	9		HUDSON, Dominique at Gardner-Webb (01-02-10)
	8		SHEPARD, Kendall at UNC Asheville (02-27-10)
Steals	10		Wright, Monica at Virginia (12-29-09)
	5		SHEPARD, Kendall vs UNC Asheville (01-18-10)
	5		Kellum, Paulisha at Virginia (12-29-09)
Blocked Shots	4		MONTGOMERY, Lindsey at UNC Asheville (02-27-10)
	3		WHITE, Katie at Coastal Carolina (01-25-10)
	3		POPE, LaTroya at Gardner-Webb (01-02-10)
Turnovers	9		MILLER, Joanna vs N.C. Central (02-04-10)

Fouls

9 ERWINSPENCER, Da'Nar at Radford (02-01-10)  
9 Becky Fernandes vs Longwood (01-12-10)  
9 Benson, Lauren vs Cornell (12-28-09)  
5 RILES, Kelli at UNC Asheville (02-27-10)  
5 MONTGOMERY, Lindsey at UNC Asheville (02-27-10)  
5 WASMER, Kelsey vs Charleston Southern (02-22-10)  
5 WHITE, Chanel at Winthrop (02-15-10)  
5 RILES, Kelli vs UNC Asheville (01-18-10)  
5 Morgan Smith vs Longwood (01-12-10)  
5 POPE, LaTroya at Gardner-Webb (01-02-10)  
5 HUDSON, Dominique at Gardner-Webb (01-02-10)  
5 Myers, Angela at Navy (11-21-09)  
5 BROWN, Chassity vs Tulane (11-20-09)  
5 RECTOR, Rene vs Winston-Salem State (11-13-09)



2009-10 Liberty Women's Basketball  
Liberty Team High/Low Analysis (as of Mar 10, 2010)  
All games



Liberty - TEAM GAME HIGHS

POINTS	94	at UNC Asheville (02-27-10)
	90	at Lafayette (11-28-09)
	86	GLENVILLE STATE (12-05-09)
	82	UNC ASHEVILLE (01-18-10)
	78	LONGWOOD (01-12-10)
FIELD GOALS MADE	37	at Lafayette (11-28-09)
	35	GLENVILLE STATE (12-05-09)
FIELD GOAL ATTEMPTS	71	at UNC Asheville (02-27-10)
	63	UNC ASHEVILLE (01-18-10)
FIELD GOAL PERCENTAGE	.644 (29-45)	PRESBYTERIAN COLLEGE (01-16-10)
	.617 (37-60)	at Lafayette (11-28-09)
3 PT FIELD GOALS MADE	9	UNC ASHEVILLE (01-18-10)
	6	at UNC Asheville (02-27-10)
3 PT FG ATTEMPTS	17	UNC ASHEVILLE (01-18-10)
	14	WINSTON-SALEM STATE (11-13-09)
3 PT FG PERCENTAGE	.667 (4-6)	vs Tulane (11-20-09)
	.545 (6-11)	at UNC Asheville (02-27-10)
FREE THROWS MADE	26	at High Point (01-30-10)
	22	at Presbyterian College (03-01-10)
	22	at UNC Asheville (02-27-10)
FREE THROW ATTEMPTS	40	at UNC Asheville (02-27-10)
	35	at High Point (01-30-10)
	35	at Auburn (12-15-09)
FREE THROW PERCENTAGE	.923 (12-13)	at Auburn (12-15-09)
	.846 (22-26)	at Presbyterian College (03-01-10)
REBOUNDS	67	GLENVILLE STATE (12-05-09)
	54	LONGWOOD (01-12-10)
ASSISTS	25	GLENVILLE STATE (12-05-09)
	22	at UNC Asheville (02-27-10)
	22	WINTHROP (01-09-10)
STEALS	19	PRESBYTERIAN COLLEGE (01-16-10)
	18	UNC ASHEVILLE (01-18-10)
BLOCKED SHOTS	6	UNC ASHEVILLE (01-18-10)
	5	at Winthrop (02-15-10)
TURNOVERS	33	GLENVILLE STATE (12-05-09)
	30	at Virginia (12-29-09)
FOULS	27	at Gardner-Webb (01-02-10)
	23	JAMES MADISON (12-01-09)
	23	at Lafayette (11-28-09)





2009-10 Liberty Women's Basketball  
Liberty High/Low Analysis (as of Mar 10, 2010)  
All games



Opponent - GAME HIGHS

POINTS	70		at Gardner-Webb (01-02-10)
	70		at Auburn (12-15-09)
	66		at UNC Asheville (02-27-10)
	63		at Virginia (12-29-09)
	62		at High Point (01-30-10)
FIELD GOALS MADE	24		at Auburn (12-15-09)
	23		GARDNER-WEBB (02-08-10)
FIELD GOAL ATTEMPTS	78		GLENVILLE STATE (12-05-09)
	54		JAMES MADISON (12-01-09)
FIELD GOAL PERCENTAGE	.523	(23-44)	GARDNER-WEBB (02-08-10)
	.480	(24-50)	at Auburn (12-15-09)
3 PT FIELD GOALS MADE	10		CHARLESTON SOUTHERN (02-22-10)
	9		COASTAL CAROLINA (02-20-10)
3 PT FG ATTEMPTS	49		GLENVILLE STATE (12-05-09)
	30		at Charleston Southern (01-23-10)
3 PT FG PERCENTAGE	.600	(3-5)	at Lafayette (11-28-09)
	.500	(9-18)	COASTAL CAROLINA (02-20-10)
FREE THROWS MADE	26		at Gardner-Webb (01-02-10)
	20		at Lafayette (11-28-09)
FREE THROW ATTEMPTS	36		at Gardner-Webb (01-02-10)
	32		JAMES MADISON (12-01-09)
FREE THROW PERCENTAGE	1.000	(6-6)	at Coastal Carolina (01-25-10)
	.818	(18-22)	at Charleston Southern (01-23-10)
REBOUNDS	41		JAMES MADISON (12-01-09)
	35		UNC GREENSBORO (11-17-09)
ASSISTS	17		at Gardner-Webb (01-02-10)
	16		vs Tulane (11-20-09)
STEALS	19		at Virginia (12-29-09)
	15		GLENVILLE STATE (12-05-09)
BLOCKED SHOTS	5		at UNC Asheville (02-27-10)
	5		at Coastal Carolina (01-25-10)
TURNOVERS	32		WINSTON-SALEM STATE (11-13-09)
	30		PRESBYTERIAN COLLEGE (01-16-10)
FOULS	27		at UNC Asheville (02-27-10)
	25		at High Point (01-30-10)



**2009-10 Liberty Women's Basketball  
Liberty High/Low Analysis (as of Mar 10, 2010)  
All games**



**Liberty - GAME LOWS**

POINTS	50		JAMES MADISON (12-01-09)
	52		at Winthrop (02-15-10)
	54		at Virginia (12-29-09)
	55		at Navy (11-21-09)
	55		at Presbyterian College (03-01-10)
FIELD GOALS MADE	16		at Presbyterian College (03-01-10)
	18		JAMES MADISON (12-01-09)
FIELD GOAL ATTEMPTS	41		at Radford (02-01-10)
	42		at Presbyterian College (03-01-10)
FIELD GOAL PERCENTAGE	.305	(18-59)	JAMES MADISON (12-01-09)
	.381	(16-42)	at Presbyterian College (03-01-10)
3 PT FIELD GOALS MADE	0		GLENVILLE STATE (12-05-09)
	0		at Radford (02-01-10)
	0		COASTAL CAROLINA (02-20-10)
	0		RADFORD (03-05-10)
3 PT FG ATTEMPTS	1		GLENVILLE STATE (12-05-09)
	3		at Radford (02-01-10)
3 PT FG PERCENTAGE	.000	(0-1)	GLENVILLE STATE (12-05-09)
	.000	(0-3)	at Radford (02-01-10)
	.000	(0-5)	COASTAL CAROLINA (02-20-10)
	.000	(0-4)	RADFORD (03-05-10)
FREE THROWS MADE	8		at Virginia (12-29-09)
	8		WINTHROP (01-09-10)
	8		N.C. CENTRAL (02-04-10)
FREE THROW ATTEMPTS	10		at Virginia (12-29-09)
	11		WINTHROP (01-09-10)
FREE THROW PERCENTAGE	.455	(10-22)	UNC GREENSBORO (11-17-09)
	.524	(11-21)	vs Cornell (12-28-09)
REBOUNDS	23		at Auburn (12-15-09)
	28		COASTAL CAROLINA (02-20-10)
ASSISTS	4		at Presbyterian College (03-01-10)
	6		JAMES MADISON (12-01-09)
STEALS	6		at Auburn (12-15-09)
	6		JAMES MADISON (12-01-09)
BLOCKED SHOTS	6		N.C. CENTRAL (02-04-10)
	0		at Navy (11-21-09)
TURNOVERS	0		at UNC Asheville (02-27-10)
	13		at Coastal Carolina (01-25-10)
	14		at Lafayette (11-28-09)
	14		at High Point (01-30-10)
	14		COASTAL CAROLINA (02-20-10)
FOULS	14		at UNC Asheville (02-27-10)
	14		HIGH POINT (03-08-10)
	10		PRESBYTERIAN COLLEGE (01-16-10)
	11		UNC ASHEVILLE (01-18-10)



**2009-10 Liberty Women's Basketball  
Liberty High/Low Analysis (as of Mar 10, 2010)  
All games**



**Opponent - GAME LOWS**

POINTS	18		at Winthrop (02-15-10)
	26		WINSTON-SALEM STATE (11-13-09)
	27		PRESBYTERIAN COLLEGE (01-16-10)
	33		RADFORD (03-05-10)
	38		WINTHROP (01-09-10)
FIELD GOALS MADE	38		at Coastal Carolina (01-25-10)
	5		at Winthrop (02-15-10)
FIELD GOAL ATTEMPTS	10		PRESBYTERIAN COLLEGE (01-16-10)
	33		at Presbyterian College (03-01-10)
FIELD GOAL PERCENTAGE	36		PRESBYTERIAN COLLEGE (01-16-10)
	.119	(5-42)	at Winthrop (02-15-10)
3 PT FIELD GOALS MADE	.192	(15-78)	GLENVILLE STATE (12-05-09)
	0		at Winthrop (02-15-10)
3 PT FG ATTEMPTS	1		WINSTON-SALEM STATE (11-13-09)
	1		PRESBYTERIAN COLLEGE (01-16-10)
3 PT FG PERCENTAGE	5		at Lafayette (11-28-09)
	7		at Virginia (12-29-09)
FREE THROWS MADE	.000	(0-14)	at Winthrop (02-15-10)
	.056	(1-18)	PRESBYTERIAN COLLEGE (01-16-10)
FREE THROW ATTEMPTS	3		WINSTON-SALEM STATE (11-13-09)
	5		vs Tulane (11-20-09)
	5		RADFORD (03-05-10)
FREE THROW PERCENTAGE	5		WINSTON-SALEM STATE (11-13-09)
	6		at Coastal Carolina (01-25-10)
	.421	(8-19)	UNC GREENSBORO (11-17-09)
REBOUNDS	.500	(5-10)	vs Tulane (11-20-09)
	.500	(8-16)	NORTH CAROLINA A&T (01-05-10)
ASSISTS	16		CHARLESTON SOUTHERN (02-22-10)
	17		at Presbyterian College (03-01-10)
STEALS	2		at Winthrop (02-15-10)
	5		WINSTON-SALEM STATE (11-13-09)
BLOCKED SHOTS	2		at Lafayette (11-28-09)
	2		at High Point (01-30-10)
TURNOVERS	0		WINSTON-SALEM STATE (11-13-09)
	0		at Navy (11-21-09)
	0		vs Cornell (12-28-09)
	0		WINTHROP (01-09-10)
	0		COASTAL CAROLINA (02-20-10)
	0		CHARLESTON SOUTHERN (02-22-10)
FOULS	13		at Gardner-Webb (01-02-10)
	15		JAMES MADISON (12-01-09)
FOULS	15		at Charleston Southern (01-23-10)
	13		WINSTON-SALEM STATE (11-13-09)
	13		at Auburn (12-15-09)
	13		N.C. CENTRAL (02-04-10)



**2009-10 Liberty Women's Basketball**  
**Liberty Team Game-by-Game (as of Mar 10, 2010)**  
**All games**



TEAM STATISTICS

Opponent	Date	Score		Total		3-Pointers		Free throws		Rebounds				pf	a	t/o	blk	stl	pts	avg
				fg-fga	pct	3fg-fga	pct	ft-fa	pct	off	def	tot	avg							
WINSTON-SALEM STATE	11-13-09	71-26	W	27-57	.474	4-14	.286	13-17	.765	16	23	39	39.0	15	18	19	4	15	71	71.0
UNC GREENSBORO	11-17-09	60-42	W	24-49	.490	2-9	.222	10-22	.455	13	27	40	39.5	17	10	19	4	14	60	65.5
vs Tulane	11-20-09	63-52	W	24-47	.511	4-6	.667	11-19	.579	15	23	38	39.0	16	10	24	3	11	63	64.7
at Navy	11-21-09	55-43	W	19-48	.396	3-8	.375	14-21	.667	17	23	40	39.2	14	11	18	0	7	55	62.2
at Lafayette	11-28-09	90-55	W	37-60	.617	3-6	.500	13-20	.650	15	18	33	38.0	23	15	14	1	14	90	67.8
JAMES MADISON	12-01-09	50-60	L	18-59	.305	1-9	.111	13-17	.765	14	32	46	39.3	23	6	20	3	6	50	64.8
GLENVILLE STATE	12-05-09	86-45	W	35-57	.614	0-1	.000	16-28	.571	18	49	67	43.3	17	25	33	2	11	86	67.9
at Auburn	12-15-09	64-70	L	25-51	.490	2-7	.286	12-13	.923	6	17	23	40.8	18	6	16	1	8	64	67.4
vs Cornell	12-28-09	70-40	W	28-53	.528	3-11	.273	11-21	.524	16	27	43	41.0	18	16	22	4	12	70	67.7
at Virginia	12-29-09	54-63	L	22-54	.407	2-11	.182	8-10	.800	16	18	34	40.3	20	7	30	3	10	54	66.3
at Gardner-Webb	01-02-10	65-70	L	23-52	.442	4-9	.444	15-25	.600	16	30	46	40.8	27	11	23	1	10	65	66.2
NORTH CAROLINA A&T	01-05-10	57-51	W	21-54	.389	1-6	.167	14-23	.609	19	26	45	41.2	16	13	23	3	11	57	65.4
WINTHROP	01-09-10	67-38	W	27-53	.509	5-13	.385	8-11	.727	12	25	37	40.8	15	22	16	3	14	67	65.5
LONGWOOD	01-12-10	78-55	W	30-61	.492	1-9	.111	17-24	.708	26	28	54	41.8	19	19	28	3	12	78	66.4
PRESBYTERIAN COLLEGE	01-16-10	73-27	W	29-45	.644	5-11	.455	10-17	.588	11	21	32	41.1	10	17	21	2	19	73	66.9
UNC ASHEVILLE	01-18-10	82-40	W	29-63	.460	9-17	.529	15-24	.625	24	25	49	41.6	11	21	18	6	18	82	67.8
at Charleston Southern	01-23-10	65-52	W	25-49	.510	1-6	.167	14-25	.560	15	29	44	41.8	17	10	17	1	8	65	67.6
at Coastal Carolina	01-25-10	57-38	W	20-52	.385	3-8	.375	14-23	.609	22	23	45	41.9	15	9	13	3	10	57	67.1
at High Point	01-30-10	75-62	W	24-50	.480	1-6	.167	26-35	.743	12	30	42	41.9	19	9	14	3	8	75	67.5
at Radford	02-01-10	63-45	W	21-41	.512	0-3	.000	21-29	.724	13	23	36	41.7	15	12	24	4	15	63	67.2
N.C. CENTRAL	02-04-10	64-44	W	26-52	.500	4-9	.444	8-13	.615	21	17	38	41.5	15	18	21	3	6	64	67.1
GARDNER-WEBB	02-08-10	56-59	L	21-53	.396	3-11	.273	11-18	.611	14	19	33	41.1	19	11	15	2	8	56	66.6
at Winthrop	02-15-10	52-18	W	20-51	.392	3-12	.250	9-14	.643	18	24	42	41.1	15	8	20	5	12	52	66.0
COASTAL CAROLINA	02-20-10	57-55	W	23-48	.479	0-5	.000	11-20	.550	13	15	28	40.6	16	10	14	1	12	57	65.6
CHARLESTON SOUTHER	02-22-10	66-56	W	24-44	.545	1-8	.125	17-29	.586	17	21	38	40.5	19	10	22	1	11	66	65.6
at UNC Asheville	02-27-10	94-66	W	33-71	.465	6-11	.545	22-40	.550	27	16	43	40.6	18	22	14	0	16	94	66.7
at Presbyterian College	03-01-10	55-40	W	16-42	.381	1-5	.200	22-26	.846	16	20	36	40.4	20	4	21	1	16	55	66.3
RADFORD	03-05-10	66-33	W	26-51	.510	0-4	.000	14-20	.700	19	27	46	40.6	14	12	23	2	15	66	66.2
HIGH POINT	03-08-10	73-48	W	29-55	.527	3-7	.429	12-18	.667	13	22	35	40.4	14	13	14	3	9	73	66.5
Liberty		1928		726-1522	.477	75-242	.310	401-622	.645	474	698	1172	40.4	495	375	576	72	338	1928	66.5
Opponents		1393		467-1360	.343	136-491	.277	323-492	.657	286	458	744	25.7	544	308	619	59	230	1393	48.0

Games played: 29  
Points/game: 66.5  
FG Pct: 47.7  
3FG Pct: 31.0  
FT Pct: 64.5

Rebounds/game: 40.4  
Assists/game: 12.9  
Turnovers/game: 19.9  
Assist/turnover ratio: 0.7  
Steals/game: 11.7  
Blocks/game: 2.5



**2009-10 Liberty Women's Basketball**  
**Liberty Team Game-by-Game Comparison (as of Mar 10, 2010)**  
**All games**



Opponent	1st	2nd	Score	Mar	Total FG	FG Pct	3-Pointers	3FG Pct	Free Throws	FT Pct	Rebounds	Assist	T/Over	Block	Steal	Fouls	
WINSTON-SALEM STATE	30/12	41/14	71-26	+45	27-57/11-42	.474/.262	4-14/1-12	.286/.083	13-17/3-5	.765/.600	39/25	+14	185	19/32	4/0	15/4	15/13
UNC GREENSBORO	32/21	28/21	60-42	+18	24-49/15-52	.490/.288	2-9/4-24	.222/.167	10-22/8-19	.455/.421	40/35	+5	10/10	19/21	4/1	14/11	17/21
Tulane	32/19	31/33	63-52	+11	24-47/20-48	.511/.417	4-6/7-21	.667/.333	11-19/5-10	.579/.500	38/22	+16	10/16	24/22	3/2	11/8	16/19
Navy	24/32	31/11	55-43	+12	19-48/15-44	.396/.341	3-8/4-20	.375/.200	14-21/9-15	.667/.600	40/26	+14	11/11	18/17	0/0	7/8	14/19
Lafayette	42/28	48/27	90-55	+35	37-60/16-39	.617/.410	3-6/3-5	.500/.600	13-20/20-26	.650/.769	33/20	+13	15/8	14/24	1/2	14/2	23/20
JAMES MADISON	16/28	34/32	50-60	(10)	18-59/18-54	.305/.333	1-9/5-18	.111/.278	13-17/19-32	.765/.594	46/41	+5	6/3	20/15	3/3	6/4	23/15
GLENVILLE STATE	39/23	47/22	86-45	+41	35-57/15-78	.614/.192	0-1/7-49	.000/.143	16-28/8-11	.571/.727	67/29	+38	25/12	33/20	2/1	11/15	17/24
Auburn	19/33	45/37	64-70	(6)	25-51/24-50	.490/.480	2-7/6-17	.286/.353	12-13/16-23	.923/.696	23/34	(11)	6/4	16/19	1/3	8/6	18/13
Cornell	31/14	39/26	70-40	+30	28-53/13-48	.528/.271	3-11/4-16	.273/.250	11-21/10-18	.524/.556	43/25	+18	16/9	22/22	4/0	12/6	18/17
Virginia	29/33	25/30	54-63	(9)	22-54/21-49	.407/.429	2-11/2-7	.182/.286	8-10/19-26	.800/.731	34/26	+8	7/3	30/20	3/2	10/19	20/15
Gardner-Webb	29/29	36/41	65-70	(5)	23-52/19-51	.442/.373	4-9/6-16	.444/.375	15-25/26-36	.600/.722	46/27	+19	11/17	23/13	1/3	10/9	27/24
NORTH CAROLINA A&T	33/27	24/24	57-51	+6	21-54/19-48	.389/.396	1-6/5-17	.167/.294	14-23/8-16	.609/.500	45/28	+17	13/13	23/19	3/3	11/9	16/18
WINTHROP	24/16	43/22	67-38	+29	27-53/13-41	.509/.317	5-13/3-9	.385/.333	8-11/9-13	.727/.692	37/21	+16	22/10	16/20	3/0	14/4	15/15
LONGWOOD	38/25	40/30	78-55	+23	30-61/18-52	.492/.346	1-9/7-22	.111/.318	17-24/12-18	.708/.667	54/19	+35	19/13	28/24	3/3	12/12	19/24
PRESBYTERIAN COLLEGE	36/10	37/17	73-27	+46	29-45/10-36	.644/.278	5-11/1-18	.455/.056	10-17/16-10	.588/.600	32/18	+14	17/7	21/30	2/1	19/10	10/16
UNC ASHEVILLE	41/17	41/23	82-40	+42	29-63/14-51	.460/.275	9-17/5-12	.529/.417	15-24/7-12	.625/.583	49/27	+22	21/9	18/25	6/1	18/9	11/19
Charleston Southern	37/24	28/28	65-52	+13	25-49/13-47	.510/.277	1-6/8-30	.167/.267	14-25/18-22	.560/.818	44/26	+18	10/10	17/15	1/2	8/6	17/23
Coastal Carolina	16/21	41/17	57-38	+19	20-52/13-41	.385/.317	3-8/6-14	.375/.429	14-23/6-6	.609/.000	45/21	+24	9/7	13/20	3/5	10/7	15/19
High Point	34/41	41/21	75-62	+13	24-50/20-49	.512/.294	1-6/5-14	.167/.357	26-35/17-27	.743/.630	42/25	+17	9/15	14/16	3/4	8/2	19/25
Radford	30/15	33/30	63-45	+18	21-41/15-51	.500/.378	0-3/3-12	.000/.250	21-29/12-17	.724/.706	36/26	+10	12/8	24/23	4/3	15/7	15/21
N.C. CENTRAL	30/20	34/24	64-44	+20	26-52/17-45	.500/.378	4-9/2-11	.444/.182	8-13/8-12	.615/.667	38/21	+17	18/12	21/21	3/3	6/11	15/13
GARDNER-WEEB	27/25	29/34	56-59	(3)	21-53/23-44	.396/.523	3-11/6-13	.273/.462	11-18/7-12	.611/.583	33/27	+6	11/13	15/17	2/1	8/4	19/19
Winthrop	23/10	29/8	52-18	+34	20-51/5-42	.392/.119	3-12/0-14	.250/.000	9-14/8-11	.643/.727	42/32	+10	8/2	20/28	5/3	12/9	15/17
COASTAL CAROLINA	33/29	24/26	57-55	+2	23-48/19-42	.479/.452	0-5/9-18	.000/.500	11-20/8-13	.550/.615	28/26	+2	10/13	14/20	1/0	12/6	16/14
CHARLESTON SOUTHERN	34/29	32/27	66-56	+10	24-44/18-41	.545/.439	1-8/10-25	.125/.400	17-29/10-16	.586/.625	38/16	+22	10/13	22/22	1/0	11/3	19/22
UNC Asheville	54/33	40/33	94-66	+28	33-71/21-44	.465/.477	6-11/6-16	.545/.375	22-40/18-24	.550/.750	43/33	+10	22/15	14/28	0/5	16/9	18/27
Presbyterian College	33/16	22/24	55-40	+15	16-42/14-33	.381/.424	1-5/2-9	.200/.222	22-26/10-16	.846/.625	36/17	+19	4/6	21/22	1/3	16/10	20/21
RADFORD	29/17	37/16	66-33	+33	26-51/12-51	.510/.235	0-4/4-16	.000/.250	14-20/5-8	.700/.625	46/23	+23	12/6	23/23	2/2	15/12	14/14
HIGH POINT	33/25	40/23	73-48	+25	29-55/16-47	.527/.340	3-7/5-16	.429/.313	12-18/11-18	.667/.611	35/28	+7	13/8	14/21	3/3	9/8	14/17

Note: Game totals are displayed in the format TEAM/OPPONENT for each category





**2009-10 Liberty Women's Basketball**  
**Liberty Combined Team Statistics (as of Mar 10, 2010)**  
**Conference games**



<b>RECORD:</b>	<b>OVERALL</b>	<b>HOME</b>	<b>AWAY</b>	<b>NEUTRAL</b>
ALL GAMES	14-2	7-1	7-1	0-0
CONFERENCE	14-2	7-1	7-1	0-0
NON-CONFERENCE	0-0	0-0	0-0	0-0

#	Player	gp-gs	min	avg	Total		3-Point		F-Throw		Rebounds				pf	dq	a	to	blk	stl	pts	avg
					fg-fga	fg%	3fg-fga	3fg%	ft-fa	ft%	off	def	tot	avg								
40	BROWN, Devon	16-16	439	27.4	95-195	.487	18-57	.316	46-64	.719	39	90	129	8.1	33	0	23	38	6	34	254	15.9
23	WARLEY, Avery	16-16	425	26.6	76-125	.608	0-1	.000	49-82	.598	65	82	147	9.2	43	2	7	39	20	23	201	12.6
11	ANTIC, Jelena	10-4	221	22.1	38-59	.644	4-8	.500	10-17	.588	26	19	45	4.5	25	1	15	20	1	12	90	9.0
21	MAYS, Amber	16-16	401	25.1	48-96	.500	2-5	.400	26-49	.531	9	17	26	1.6	37	1	57	44	1	29	124	7.8
15	BEECHER, Kylee	16-12	399	24.9	33-84	.393	1-8	.125	41-52	.788	35	38	73	4.6	28	0	14	26	3	13	108	6.8
12	DALE, Danika	16-0	292	18.3	26-59	.441	5-13	.385	17-26	.654	14	33	47	2.9	20	0	16	28	4	15	74	4.6
32	McLEOD, Rachel	16-16	400	25.0	23-67	.343	5-11	.455	20-24	.833	18	26	44	2.8	11	0	31	21	0	20	71	4.4
25	MORGAN, Dymond	16-0	275	17.2	22-72	.306	4-15	.267	21-34	.618	3	11	14	0.9	32	0	27	31	0	33	69	4.3
01	WASHINGTON, LaKen	16-0	235	14.7	26-49	.531	6-18	.333	6-15	.400	6	8	14	0.9	21	0	10	23	0	22	64	4.0
54	COY, Carra	14-0	113	8.1	3-14	.214	0-0	.000	5-11	.455	15	9	24	1.7	14	0	1	6	3	0	11	0.8
Team											32	37	69				13					
Total.....		16	3200		390-820	.476	45-136	.331	241-374	.644	262	370	632	39.5	264	4	201	289	38	201	1066	66.6
Opponents.....		16	3200		245-711	.345	79-252	.313	178-261	.682	145	248	393	24.6	313	-	159	343	36	115	747	46.7

<b>TEAM STATISTICS</b>	<b>LIBERTY</b>	<b>OPP</b>	<b>Date</b>	<b>Opponent</b>	<b>Score</b>	<b>Att.</b>
SCORING	1066	747	* 01-02-10	at Gardner-Webb	L 65-70	249
Points per game	66.6	46.7	* 01-09-10	WINTHROP	w 67-38	557
Scoring margin	+19.9	-	* 01-16-10	PRESBYTERIAN COLLEGE	w 73-27	688
FIELD GOALS-ATT	390-820	245-711	* 01-18-10	UNC ASHEVILLE	w 82-40	826
Field goal pct	.476	.345	* 01-23-10	at Charleston Southern	w 65-52	881
3 POINT FG-ATT	45-136	79-252	* 01-25-10	at Coastal Carolina	w 57-38	687
3-point FG pct	.331	.313	* 01-30-10	at High Point	w 75-62	439
3-pt FG made per game	2.8	4.9	* 02-01-10	at Radford	w 63-45	384
FREE THROWS-ATT	241-374	178-261	* 02-08-10	GARDNER-WEBB	L 56-59	833
Free throw pct	.644	.682	* 02-15-10	at Winthrop	w 52-18	560
F-Throws made per game	15.1	11.1	* 02-20-10	COASTAL CAROLINA	w 57-55	3387
REBOUNDS	632	393	* 02-22-10	CHARLESTON SOUTHERN	w 66-56	781
Rebounds per game	39.5	24.6	* 02-27-10	at UNC Asheville	w 94-66	986
Rebounding margin	+14.9	-	* 03-01-10	at Presbyterian College	w 55-40	336
ASSISTS	201	159	* 03-05-10	RADFORD	w 66-33	1136
Assists per game	12.6	9.9	* 03-08-10	HIGH POINT	w 73-48	809
TURNOVERS	289	343				
Turnovers per game	18.1	21.4				
Turnover margin	+3.4	-				
Assist/turnover ratio	0.7	0.5				
STEALS	201	115				
Steals per game	12.6	7.2				
BLOCKS	38	36				
Blocks per game	2.4	2.3				
ATTENDANCE	9017	4522				
Home games-Avg/Game	8-1127	8-565				
Neutral site-Avg/Game	-	0-0				

% = Navy Classic (Annapolis, Md.)  
 # = Marriott Cavalier Classic (Charlottesville, Va.)  
 \* = Big South Conference game

<b>Score by Periods</b>	<b>1st</b>	<b>2nd</b>	<b>Totals</b>
Liberty	513	553	1066
Opponents	357	390	747



**2009-10 Liberty Women's Basketball**  
**Liberty Extended Season Box Score (as of Mar 10, 2010)**  
**All games**



RECORD:	OVERALL	HOME	AWAY	NEUTRAL
ALL GAMES	24-5	13-2	9-3	2-0
CONFERENCE	14-2	7-1	7-1	0-0
NON-CONFERENCE	10-3	6-1	2-2	2-0

#	Player	gp-gs	min	avg	Total										pts	avg											
					fg	fg%	3fg	3fg%	ft	ft%	off	def	tot	avg			pf	dq	a	alg	to	tolg	alto	bk	bkg	stl	stl/g
40	BROWN, Devon	29-29	802	27.7	178-365	.488	36-105	.343	86-120	.717	75	170	245	8.4	57	0	42	1.45	72	2.48	0.58	15	0.52	55	1.90	478	16.5
23	WARLEY, Avery	29-29	782	27.0	133-223	.596	0-1	.000	62-111	.559	116	136	252	8.7	80	4	13	0.45	76	2.62	0.17	23	0.79	32	1.10	328	11.3
11	ANTIC, Jelena	19-8	435	22.9	65-118	.551	6-14	.429	24-39	.615	49	47	96	5.1	38	1	32	1.68	44	2.32	0.73	3	0.16	20	1.05	160	8.4
21	MAYYS, Amber	29-29	762	26.3	95-178	.534	4-8	.500	44-79	.557	12	34	46	1.6	74	2	113	3.90	91	3.14	1.24	1	0.03	67	2.31	238	8.2
15	BEECHER, Kylee	29-21	731	25.2	64-149	.430	1-12	.083	62-82	.756	56	60	116	4.0	48	0	27	0.93	52	1.79	0.52	7	0.24	20	0.69	191	6.6
32	MCLEOD, Rachel	29-29	690	23.8	48-135	.356	6-19	.316	37-48	.771	25	40	65	2.2	29	0	51	1.76	43	1.48	1.19	1	0.03	29	1.00	139	4.8
01	WASHINGTON, Lakendr	29-0	435	15.0	56-119	.471	10-39	.256	15-30	.500	16	28	44	1.5	44	1	21	0.72	51	1.76	0.41	3	0.10	41	1.41	137	4.7
12	DALE, Danika	29-0	479	16.5	42-102	.412	7-24	.292	31-48	.646	28	71	99	3.4	35	0	32	1.10	50	1.72	0.64	11	0.38	26	0.90	122	4.2
25	MORGAN, Dymond	29-0	469	16.2	37-108	.343	5-20	.250	31-47	.660	9	34	43	1.5	57	0	43	1.48	63	2.17	0.68	0	0.00	46	1.59	110	3.8
54	COY, Carra	23-0	215	9.3	8-25	.320	0-0	.000	9-18	.500	19	19	38	1.7	33	0	1	0.04	14	0.61	0.07	8	0.35	2	0.09	25	1.1
Total.....		29	5800		726-1522	.477	75-242	.310	401-622	.645	474	698	1172	40.4	495	8	375	12.93	576	19.86	0.65	72	2.48	338	11.66	1928	66.5
Opponents.....		29	5800		467-1360	.343	136-491	.277	323-492	.657	286	458	744	25.7	544	-	308	10.62	619	21.34	0.50	59	2.03	230	7.93	1393	48.0

Score by Periods	1st	2nd	Totals
Liberty	908	1020	1928
Opponents	672	721	1393



**2009-10 Liberty Women's Basketball**  
**Liberty Combined Team Statistics (as of Mar 10, 2010)**  
**All games**



RECORD:	OVERALL	HOME	AWAY	NEUTRAL
ALL GAMES	24-5	13-2	9-3	2-0
CONFERENCE	14-2	7-1	7-1	0-0
NON-CONFERENCE	10-3	6-1	2-2	2-0

#	Player	gp-gs	min	avg	Total		3-Point		F-Throw		Rebounds			pf	dq	a	to	blk	stl	pts	avg	
					fg-fga	fg%	3fg-fga	3fg%	ft-fa	ft%	off	def	tot									avg
40	BROWN, Devon	29-29	802	27.7	178-365	.488	36-105	.343	86-120	.717	75	170	245	8.4	57	0	42	72	15	55	478	16.5
23	WARLEY, Avery	29-29	782	27.0	133-223	.596	0-1	.000	62-111	.559	116	136	252	8.7	80	4	13	76	23	32	328	11.3
11	ANTIC, Jelena	19-8	435	22.9	65-118	.551	6-14	.429	24-39	.615	49	47	96	5.1	38	1	32	44	3	20	160	8.4
21	MAYS, Amber	29-29	762	26.3	95-178	.534	4-8	.500	44-79	.557	12	34	46	1.6	74	2	113	91	1	67	238	8.2
15	BEECHER, Kylee	29-21	731	25.2	64-149	.430	1-12	.083	62-82	.756	56	60	116	4.0	48	0	27	52	7	20	191	6.6
32	McLEOD, Rachel	29-29	690	23.8	48-135	.356	6-19	.316	37-48	.771	25	40	65	2.2	29	0	51	43	1	29	139	4.8
01	WASHINGTON, LaKen	29-0	435	15.0	56-119	.471	10-39	.256	15-30	.500	16	28	44	1.5	44	1	21	51	3	41	137	4.7
12	DALE, Danika	29-0	479	16.5	42-102	.412	7-24	.292	31-48	.646	28	71	99	3.4	35	0	32	50	11	26	122	4.2
25	MORGAN, Dymond	29-0	469	16.2	37-108	.343	5-20	.250	31-47	.660	9	34	43	1.5	57	0	43	63	0	46	110	3.8
54	COY, Carra	23-0	215	9.3	8-25	.320	0-0	.000	9-18	.500	19	19	38	1.7	33	0	1	14	8	2	25	1.1
Team											69	59	128				20					
Total.....		29	5800		726-1522	.477	75-242	.310	401-622	.645	474	698	1172	40.4	495	8	375	576	72	338	1928	66.5
Opponents.....		29	5800		467-1360	.343	136-491	.277	323-492	.657	286	458	744	25.7	544	-	308	619	59	230	1393	48.0

TEAM STATISTICS	LIBERTY	OPP	Date	Opponent	Score	Att.	
SCORING	1928	1393	11-13-09	WINSTON-SALEM STATE	w 71-26	1192	
Points per game	66.5	48.0	11-17-09	UNC GREENSBORO	w 60-42	786	
Scoring margin	+18.4	-	% 11-20-09	vs Tulane	w 63-52	207	
FIELD GOALS-ATT	726-1522	467-1360	% 11-21-09	at Navy	w 55-43	852	
Field goal pct	.477	.343	11-28-09	at Lafayette	w 90-55	324	
3 POINT FG-ATT	75-242	136-491	12-01-09	JAMES MADISON	L 50-60	1209	
3-point FG pct	.310	.277	12-05-09	GLENVILLE STATE	w 86-45	611	
3-pt FG made per game	2.6	4.7	12-15-09	at Auburn	L 64-70	1566	
FREE THROWS-ATT	401-622	323-492	# 12-28-09	vs Cornell	w 70-40	452	
Free throw pct	.645	.657	# 12-29-09	at Virginia	L 54-63	3096	
F-Throws made per game	13.8	11.1	* 01-02-10	at Gardner-Webb	L 65-70	249	
REBOUNDS	1172	744	01-05-10	NORTH CAROLINA A&T	w 57-51	365	
Rebounds per game	40.4	25.7	* 01-09-10	WINTHROP	w 67-38	557	
Rebounding margin	+14.8	-	01-12-10	LONGWOOD	w 78-55	460	
ASSISTS	375	308	* 01-16-10	PRESBYTERIAN COLLEGE	w 73-27	688	
Assists per game	12.9	10.6	* 01-18-10	UNC ASHEVILLE	w 82-40	826	
TURNOVERS	576	619	* 01-23-10	at Charleston Southern	w 65-52	881	
Turnovers per game	19.9	21.3	* 01-25-10	at Coastal Carolina	w 57-38	687	
Turnover margin	+1.5	-	* 01-30-10	at High Point	w 75-62	439	
Assist/turnover ratio	0.7	0.5	* 02-01-10	at Radford	w 63-45	384	
STEALS	338	230	02-04-10	N.C. CENTRAL	w 64-44	781	
Steals per game	11.7	7.9	* 02-08-10	GARDNER-WEBB	L 56-59	833	
BLOCKS	72	59	* 02-15-10	at Winthrop	w 52-18	560	
Blocks per game	2.5	2.0	* 02-20-10	COASTAL CAROLINA	w 57-55	3387	
ATTENDANCE	14421	11019	* 02-22-10	CHARLESTON SOUTHERN	w 66-56	781	
Home games-Avg/Game	15-961	12-863	* 02-27-10	at UNC Asheville	w 94-66	986	
Neutral site-Avg/Game	-	2-330	* 03-01-10	at Presbyterian College	w 55-40	336	
Score by Periods	1st	2nd	Totals	* 03-05-10	RADFORD	w 66-33	1136
Liberty	908	1020	1928	* 03-08-10	HIGH POINT	w 73-48	809
Opponents	672	721	1393				

% = Navy Classic (Annapolis, Md.)  
# = Marriott Cavalier Classic (Charlottesville, Va.)  
\* = Big South Conference game