

**2009-10 Liberty
Women's Basketball
Quick Facts**

General Information

Name of School..... Liberty University
City/Zip Lynchburg, Va. 24502
Founded 1971
Enrollment 11,311
Nickname..... Lady Flames
School Colors Red, White & Blue
Home Arena..... Vines Center
Capacity..... 8,085
Affiliation..... NCAA Division I
Conference..... Big South
Founder..... Dr. Jerry Falwell
Chancellor..... Jerry Falwell, Jr.
Director of Athletics..... Jeff Barber
Athletics Dept. Phone..... (434) 582-2100

Women's Basketball Information

Head Coach..... Carey Green
Alma Mater Coastal Carolina, '79
Record at School 259-82 (11th Year)
Career Record..... Same
Assistant Coaches
..... Alexis Sherard (St. Michael's, '93)
..... Heather Stephens (Wyoming, '03)
..... Andy Bloodworth (Calvin, '98)
Certified Athletic Trainer
..... Madeline Bosek

History

First Season of Basketball..... 1975-76
All-Time Record..... 530-410
NCAA Tournament Appearances..... 12
Last NCAA Appearance..... 2009
Opponent..... Louisville
Result..... L/42-62 (First Round)
Final/Highest Ranking N/A
Final 2008-09 Record..... 24-9
Conference Record/Finish..... 15-1/First
Starters Returning/Lost..... 2/3
Letterwinners Returning/Lost..... 7/7
Newcomers..... 6

Athletics Communications Info.

Asst. AD - Communications
..... Todd Wetmore
SID Office Phone..... (434) 582-2292
Cell Phone..... (434) 841-8974
Email Address..... twetmore@liberty.edu
Assoc. Director..... Ryan Bomberger
Cell Phone..... (434) 221-5576
Email Address... rbomberger@liberty.edu
Asst. Director..... Paul Carmany
Cell Phone..... (434) 221-5575
Email Address..... pjcarmany@liberty.edu
Asst. Director..... Eric Brown
Cell Phone..... (434) 221-8817
Email Address..... eqbrown@liberty.edu
Grad. Assistant..... Jennifer Shelton
Cell Phone..... (828) 638-3876
Email Address..... jbshelton2@liberty.edu
WBB Contact..... Paul Carmany
Ath. Comm. Fax..... (434) 582-2076
Website..... LibertyFlames.com

Media Information

Radio

Station..... WWMC "The Light" (90.9 FM)
Play-By-Play..... Nick Pierce
Color..... Josh Wood

Television

Station..... Flames Sports Network
Play-By-Play..... Ray Jones
Color..... Jamie Hall

Game No. 28 - March 5, 2010



**Radford HIGHLANDERS
(6-20, 5-10 Big South)**

at



**Liberty LADY FLAMES
(22-5, 12-2 Big South)**

Lynchburg, Va. - Vines Center - 7 p.m.

The Game

Liberty (22-5, 12-2 Big South) will open its final homestand of the 2009-10 regular season Friday, when Commonwealth foe Radford (6-20, 5-10 Big South) visits the Vines Center for a possible preview of the Big South Championship quarterfinals. Tipoff is scheduled for 7 p.m. for the 52nd all-time meeting between the two programs.

Last Time Out

A 16-0 first-half run and stellar free throw shooting helped the Lady Flames capture their seventh consecutive road victory, Monday evening at Presbyterian College. Liberty shot 84.6 percent (22-of-26) from the charity stripe in its 55-40 win over the Blue Hose, improving to 5-0 all-time against Presbyterian College.

On Deck

Liberty will close out the regular season Monday at 7 p.m., when it plays host to High Point in a matchup between the Big South Conference's preseason co-favorites. Point guard Amber Mays will be honored as part of the Lady Flames' Senior Night festivities.

Lady Flames On The Air

All Lady Flames basketball games may be heard LIVE on WWMC 90.9 FM "The Light." Jamie Hall, in the midst of his 16th year of broadcasting Lady Flames basketball, is once again handling the courtside play-by-play duties for road games. Nick Pierce and Josh Wood serve as the primary commentators for home contests.

Lady Flames On TV

All 15 of Liberty's home women's basketball games will be televised in 2009-10, including 14 on the Flames Sports Network (FSN) and one on SportSouth/MASN. The FSN broadcasting team consists of Ray Jones on play-by-play and Jamie Hall on color.

Liberty's Probable Starters

No.	Name	Pos.	Ht.	Yr.	PPG	RPG	Other Stats
21	Amber Mays	G	5-6	Sr.	8.3	1.6	3.9 apg
32	Rachel McLeod	G	5-10	Jr.	5.0	2.3	1.7 apg
40	Devon Brown	G	5-10	R-Fr.	16.5	8.5	2.0 spg
15	Kylee Beecher	F	6-4	So.	6.8	4.1	75.0 FT%
23	Avery Warley	F	6-3	R-So.	11.0	8.6	59.7 FG%

Reserves

1	LaKendra Washington	G	5-8	Fr.	4.5	1.6	1.3 spg
11	Jelena Antic	F	6-2	Fr.	7.9	5.1	1.7 apg
12	Danika Dale	G	6-1	So.	4.2	3.3	1.1 apg
25	Dymond Morgan	G	5-7	Jr.	4.0	1.5	1.5 spg
30	Brittany Campbell	G	6-0	R-Fr.	--	--	--
43	Kittery Maine	F	6-4	Jr.	--	--	--
54	Carra Coy	F	6-6	Fr.	1.2	1.7	0.4 bpg

2009-10 Liberty Women's Basketball Schedule/Results

Overall: 22-5
Big South: 12-2

11/13 WINSTON-SALEM ST.* W, 71-26
11/17 UNC GREENSBORO^ W, 60-42

Navy Classic (Annapolis, Md.)

11/20 vs. Tulane W, 63-52
11/21 at Navy W, 55-43

11/28 at Lafayette W, 90-55

12/1 JAMES MADISON^ L, 50-60
12/5 GLENVILLE STATE^ W, 86-45
12/15 at Auburn L, 64-70

Marriott Cavalier Classic (Charlottesville, Va.)

12/28 vs. Cornell W, 70-40
12/29 at No. 21/23 Virginia L, 54-63

1/2 at Gardner-Webb* L, 65-70
1/5 N.C. A&T^ W, 57-51
1/9 WINTHROP*^ W, 67-38
1/12 LONGWOOD^ W, 78-55
1/16 PRESBYTERIAN*^ W, 73-27
1/18 UNC ASHEVILLE*^ W, 82-40
1/23 at Charleston So.* W, 65-52
1/25 at Coastal Carolina* W, 57-38
1/30 at High Point* W, 75-62

2/1 at Radford* W, 63-45
2/4 N.C. CENTRAL^ W, 64-44
2/8 GARDNER-WEBB* & L, 56-59
2/15 at Winthrop* W, 52-18
2/20 COASTAL CAR.*^ W, 57-55
2/22 CHARLESTON SO.*^ W, 66-56
2/27 at UNC Asheville* W, 94-66

3/1 at Presbyterian* W, 55-40
3/5 RADFORD*^ 7 p.m.
3/8 HIGH POINT*^ 7 p.m.

*Big South WBB Championship
(High Point, N.C.)*

3/12 Quarterfinals TBA
3/13 Semifinals# 1/3 p.m.
3/14 Championship Game# 2 p.m.

NCAA Tournament

3/20-21 First Round TBA
3/22-23 Second Round TBA

Home Games in BOLD CAPS

* - Big South Conference Game
All times are Eastern Standard Time
^ - Broadcast on
Flames Sports Network
& - Broadcast on SportSouth/MASN

Team Statistical Leaders

Total Points

Devon Brown - 445/16.5 ppg
Avery Warley - 298/11.0 ppg

Total Rebounds

Avery Warley - 232/8.6 rpg
Devon Brown - 230/8.5 rpg

Total Assists

Amber Mays - 106/3.9 apg
Rachel McLeod - 47/1.7 apg

Total Steals

Amber Mays - 63/2.3 spg
Devon Brown - 55/2.0 spg

Head Coach Carey Green

Record at Liberty: 259-82 (11th Year)
Career Record: Same

9 Big South Championships: 2000, 2001, 2002, 2003, 2004, 2005, 2006, 2008, 2009
8 NCAA Appearances: 2000, 2001, 2002, 2003, 2004, 2005 (Sweet 16), 2006, 2008, 2009
5-time Big South Coach of the Year: 2000, 2003, 2006, 2008, 2009
3-time VaSID State Coach of the Year: 2003, 2005, 2006

Liberty head women's basketball coach Carey Green, in his 11th season with the Lady Flames, has instilled quite a winning tradition during his tenure at the institution. His teams have averaged more than 23 victories per year, putting his name alongside the nation's premier women's basketball coaches.

Green has accumulated a 259-82 record on the Liberty bench, good for a winning percentage of .760. He currently ranks ninth all-time among NCAA Division I women's basketball coaches in winning percentage, ahead of renowned coaching names like Rutgers' Vivian Stringer, LSU's Van Chancellor and North Carolina's Sylvia Hatchell.

More importantly, Liberty has won the Big South Tournament title and advanced to the NCAA Tournament nine times with Green as head coach. Liberty has totaled 23 or more victories during eight of those years, including the 2004-05 season, which saw the Lady Flames reach the Sweet 16 for the first time in program history.

Green has actually been to the postseason on 21 occasions as a women's basketball coach, a span which includes a dozen years as an assistant coach at Clemson. In all but one of the 21 appearances, he has experienced the NCAA Tournament.

Last season, Green earned his unprecedented fifth Big South Coach of the Year award, after guiding a team decimated by ACL injuries to a 24-9 record and its 12th NCAA Tournament appearance in the last 13 years. The Lady Flames also won the Hokie Hardwood Classic, claiming their first-ever victory over Virginia Tech in the tournament championship game.

At season's end, Green saw his second player selected in the WNBA Draft, as Megan Frazee was taken in the second round by the San Antonio Silver Stars. She then played part of her rookie season alongside 2005 Liberty alum Katie (Feenstra) Mattera in San Antonio.

Rebounding and defense have always been staples of Green-coached teams, and the 2008-09 Lady Flames were no exception. Liberty outrebounded opponents by an average of 12.7 caroms per game, ranking second nationally. The Lady Flames have now been listed among the nation's top five teams in rebounding margin for six straight years. Liberty led the nation in the category in 2003-04 and 2004-05. The Lady Flames also ended the season ranked in the top 10 nationally for scoring defense (second, 52.6 ppg) and field goal percentage defense (sixth, .345).

A key late-season conference victory over High Point in 2006 made Green the winningest coach in Big South Conference history. He is also Liberty's career wins leader.

The 2004-05 year was a special one on Liberty Mountain, for many reasons. A senior-laden Lady Flames team recorded upset wins over No. 4 seed Penn State (78-70) and No. 5 seed DePaul (88-79) in the first two rounds of the NCAA Tournament, becoming just the second team ever to advance to the Sweet 16 as a No. 13 seed. The Lady Flames ended the season with their highest national ranking to date, No. 21 (USA Today/ESPN).

Green's track record shows he has the ability to meet those challenges. The Lady Flames have recorded two wins over UNLV, Virginia and West Virginia and solo victories over No. 19 DePaul, No. 17 Kansas State, No. 25 Penn State, Virginia Tech and Wake Forest during Green's tenure. The upset victory over No. 25 Virginia in 2003 marked Liberty's first win over a Top 25 team.

His record against conference foes is equally impressive. He led the Lady Flames on a Big South record 47-game winning streak and currently owns a .912 (166-16) winning percentage against conference teams. Green has marched through conference play with one or fewer setbacks seven times, while guiding the Lady Flames to two undefeated conference seasons.

Big South Conference Update

(Records Updated Through 3/1)

Overall Standings

	W	L	Pct.
Gardner-Webb	25	3	.893
Liberty	22	5	.815
Coastal Carolina	15	11	.577
High Point	16	12	.571
Charleston So.	15	12	.556
Winthrop	12	16	.429
UNC Asheville	8	20	.286
Radford	6	20	.231
Presbyterian	5	23	.179

Conference Standings

	W	L	Pct.
Gardner-Webb	14	1	.933
Liberty	12	2	.857
High Point	9	6	.600
Charleston So.	7	7	.500
Coastal Carolina	6	8	.429
Winthrop	6	8	.429
Radford	5	10	.333
Presbyterian	3	11	.214
UNC Asheville	3	12	.200

Upcoming Schedule

Friday, March 5

Gardner-Webb at Coastal Car.	7 p.m.
Winthrop at UNC Asheville	7 p.m.
Presbyterian at Charleston So.	7 p.m.
Radford at Liberty	7 p.m.

Monday, March 8

Winthrop at Charleston So.	7 p.m.
High Point at Liberty	7 p.m.
Presbyterian at Coastal Car.	7 p.m.

End Regular Season

Big South WBB Championship All Games at High Point

Friday, March 12 - Quarterfinals

G1: No. 1 seed vs. No. 8 seed	Noon
G2: No. 4 seed vs. No. 5 seed	2 p.m.
G3: No. 2 seed vs. No. 7 seed	5:30 p.m.
G4: No. 3 seed vs. No. 6 seed	7:30 p.m.

Saturday, March 13 - Semifinals

G5: G1 winner vs. G2 winner	1 p.m.
G6: G3 winner vs. G4 winner	3 p.m.

Sunday, March 14 - Championship

G7: G5 winner vs. G6 winner	2 p.m.
-----------------------------	--------

Scouting Radford

Friday's game marks the regular-season finale for Radford, which is trying to build momentum for the Big South Championship. After winning four of their first five conference games, including a 68-53 victory at Gardner-Webb on Jan. 4, Radford is 1-9 in its last 10 Big South tilts.

The Highlanders are just 2-12 away from the Dedmon Center this year, with one of those victories being the previously mentioned Gardner-Webb game.

With Radford currently ranked seventh in the Big South standings and Liberty in second place, Friday's contest could be a preview of the Big South Championship quarterfinals, slated for March 12 at High Point's Millis Center.

Kymesha Alston, a 6-0 forward, is the only senior on Radford's roster. She leads the Highlanders in both points (12.6 ppg) and rebounds (6.2 rpg), while sitting fifth in the Big South in points and 10th in caroms.

Radford's second and third-leading scorers on the year, Da'Naria Erwin-Spencer (9.3 ppg) and Denay Wood (8.6 ppg), did not play during the Highlanders' weekend swing to Presbyterian College and UNC Asheville. In their absence, 5-9 freshman guard Ashley Buckhannon stepped up. She averaged 16 points per contest, earning Big South Freshman of the Week laurels for the second time this season.

The Coaching Matchup

Liberty Head Coach Carey Green is in his 11th season with the Lady Flames, and has led his team to nine Big South titles. A five-time Big South Coach of the Year, Green owns a 259-82 career record and is the all-time wins leader at Liberty and among Big South women's basketball coaches. His career winning percentage (.760) ranked ninth all-time among NCAA Division I women's basketball coaches at the season's outset. Green is 21-3 all-time against Radford.

Tajama Ngongba is 16-38 in her second season as a collegiate head coach. An All-American player at George Washington, Ngongba served four seasons as an assistant coach at her alma mater, prior to taking the reins at Radford a season ago. Ngongba is 0-3 all-time versus Liberty.

Liberty-Radford Series Notes

Liberty has played Radford more often than any other opponent in program history and leads the head-to-head series, 28-23. The Lady Flames have won six consecutive games against the Highlanders and are 27-3 in the teams' last 30 meetings.

The Lady Flames have won 14 straight home games against Radford. The Highlanders' most recent victory at the Vines Center was a 73-54 decision on Feb. 3, 1996.

Last year, Liberty rolled to an 80-38 home win over Radford on Feb. 2, 2009. Megan Frazee's 21 points and 10 rebounds led the Lady Flames to their second-largest margin of victory ever against their Commonwealth rival. Kymesha Alston paced the visitors with 16 points and six boards.

Liberty broke open this year's first matchup against the Highlanders with an 11-2 run to close the first half, Feb. 1, 2010 at the Dedmon Center. Devon Brown had 20 points and 11 rebounds in the Lady Flames' 63-45 triumph.

Liberty.....Statistical Comparison..... Radford

22-5	Record	6-20
47.4	Field Goal Percentage	36.6
34.8	Opponent Field Goal Percentage	41.3
31.2	Three-Point Field Goal Percentage	30.2
2.7	Three-Pointers Made Per Game	3.3
64.2	Free Throw Percentage	63.3
40.4	Rebound Average	35.6
25.7	Opponent Rebound Average	40.5
+14.7	Rebound Differential	-4.9
66.3	Points Per Game	56.5
48.6	Points Allowed Per Game	63.8
+17.7	Point Differential	-7.3



NCAA Top 25 Polls

AP Top 25

1) Connecticut (29-0).....	1,000 pts.
2) Stanford (27-1)	959
3) Nebraska (27-0)	920
4) Tennessee (27-2)	880
5) Xavier (24-3).....	822
6) Notre Dame (25-3)	764
7) West Virginia (26-3).....	726
8) Florida State (26-4)	708
9) Duke (24-5)	692
10) Ohio State (27-4).....	683
11) Oklahoma (20-8).....	582
12) Georgetown (24-5)	533
13) Iowa State (22-5).....	509
14) Baylor (21-7).....	494
15) Texas A&M (20-7).....	443
16) St. John's (23-5)	385
17) Gonzaga (25-4)	286
18) Texas (19-9)	274
19) Kentucky (23-6).....	248
20) Oklahoma State (20-8).....	214
21) LSU (20-8).....	189
22) Georgia (22-7)	174
23) Hartford (25-3).....	135
24) Virginia (21-8).....	96
25) Michigan State (21-8)	77

2009-10 Opponents in Bold

ESPN/USA Today Coaches Top 25

1) Connecticut (30-0).....	775 pts.
2) Stanford (27-1)	737
3) Nebraska (27-0)	720
4) Tennessee (27-2)	681
5) Xavier (24-3).....	652
6) Florida State (26-4)	595
7) Notre Dame (25-4)	569
8) Duke (24-5)	534
9) West Virginia (26-4).....	508
10) Ohio State (27-4).....	486
11) Georgetown (25-5)	485
12) Oklahoma (20-8)	462
13) Iowa State (22-5).....	422
14) Texas A&M (20-7).....	355
15) Baylor (21-7).....	326
16) St. John's (24-5).....	291
17) Gonzaga (25-4)	237
18) Kentucky (23-6).....	234
19) Virginia (21-8).....	201
20) Oklahoma State (20-8).....	160
21) Hartford (25-3).....	137
22) Texas (19-9)	124
23) Michigan State (21-8)	79
24) Georgia (22-7)	68
25) UCLA (20-7)	38

2009-10 Opponents in Bold

Turning Up the Heat in the Furnace

The 2009-10 campaign is the 18th season the Liberty women's basketball team has called the Vines Center its full-time home. The "Furnace" has served as a favorable venue for the Lady Flames over the years. Liberty is **199-53** (.790) all-time at the Vines Center, including 10-2 last season.

The Lady Flames are 11-2 to start this year's 15-game home schedule and are 107-11 in their last 118 home games, dating back to the 2001-02 season.

Liberty Versus the Big South Conference

Liberty has enjoyed a considerable amount of success versus Big South Conference opposition, since joining the league for the 1991-92 season. The Lady Flames have won the conference tournament 12 times and captured 11 regular-season championships.

Liberty is 239-69 (.776) all-time against Big South opponents, including 203-63 in regular-season matchups and 36-6 in Big South Championship tilts. During Carey Green's tenure as head coach, the Lady Flames are 166-16 (.912) when facing Big South foes.

Marvelous in March

Liberty has gone 37-12 during the month of March under Carey Green, with nine of the setbacks coming in the NCAA Tournament. The Lady Flames are 10-2 in the regular season, 25-1 in the Big South Championship and 2-9 in the "Big Dance" during the year's third month, under his direction. This season, the Lady Flames are 1-0 to start the calendar year's third month.

The Lady Flames are 45-37 all-time in March contests and did not pick up their first victory in the month until the program's 13th season. Liberty's initial March triumph was an 82-69 win over Randolph-Macon on March 3, 1988.

T.G.I.F.

The Lady Flames are 2-0 in Friday contests this season, both of which took place in November. Liberty tipped off the year with a 71-26 rout of Winston-Salem State, Nov. 13 at the Vines Center. One week later, the Lady Flames defeated current Conference USA leader Tulane by a 63-52 count to reach the championship game of the Navy Classic.

Liberty got off to a fast start in both Friday outings, starting the Winston-Salem State game with a 24-6 lead and opening the Tulane contest with a 24-4 advantage. Devon Brown also seems to enjoy Friday games, averaging 22.0 ppg and 9.5 rpg in the two tilts.

Competing with the Commonwealth

Liberty is 2-2 versus Commonwealth opponents this season, entering Friday's game. The Lady Flames picked up victories over Longwood (78-55 on Jan. 12) and Radford (63-45 on Feb. 1), while losing to James Madison (60-50 on Dec. 1) and Virginia (63-54 on Dec. 29).

Feasting at the Foul Line

The Lady Flames entered Monday's game at Presbyterian College ranked No. 9 in the Big South and No. 299 nationally with a 63.3 percent mark at the free throw line. However, proficient foul shooting propelled Liberty to a 55-40 victory over the Blue Hose. The visiting Lady Flames made 14 consecutive charity tosses to start the game and ended up at 84.6 percent (22-of-26) from the line on the evening.

Leading the way was redshirt sophomore Avery Warley. She entered the contest as a 51.7 percent career free throw shooter. However, she made all seven of her foul shots versus Presbyterian College. Warley has now connected on a career-high 12 straight free throws, dating back to the second half of the Feb. 27 game at UNC Asheville.

Scoring Outburst

Liberty's 94 points scored at UNC Asheville on Feb. 27 were a season high and marked the 11th time in head coach Carey Green's 11 seasons at the helm that the Lady Flames have tallied at least 90 points.

The Lady Flames' point total was their second-highest output ever in a Big South Conference game. Liberty's all-time high against a Big South foe came in a 99-42 home win over Charleston Southern on Feb. 18, 2008.

**Liberty in the
Big South Stats**
(Through Games of 3/1)

Team

Scoring Offense (4th)	66.3 ppg
Scoring Defense (1st).....	48.6 ppg
Scoring Margin (1st)	+17.7 ppg
Free Throw Pct. (7th).....	.642
Field Goal Pct. (1st).....	.474
Field Goal Pct. Defense (3rd) ..	.348
3-Pt. FG Pct. (5th)312
3-Pt. FG Pct. Defense (1st).....	.277
3-Pt. FG Made (9th).....	2.7/game
Rebounds (1st).....	40.4 rpg
Opp. Rebounds (1st)	25.7 rpg
Rebounding Margin (1st).....	+14.7 rpg
Offensive Rebounds (1st).....	16.4 rpg
Defensive Rebounds (6th).....	24.0 rpg
Blocked Shots (7th)	2.5 bpg
Assists (3rd).....	13.0 apg
Steals (1st)	11.6 spg
Turnover Margin (5th)	+1.33
Asst./TO Ratio (4th).....	0.65

Individual

Scoring

Devon Brown (1st).....	16.5 ppg
Avery Warley (10th).....	11.0 ppg
Amber Mays (25th).....	8.3 ppg

Rebounding

Avery Warley (2nd).....	8.6 rpg
Devon Brown (3rd)	8.5 rpg

Offensive Rebounds

Avery Warley (2nd).....	4.0 rpg
Devon Brown (7th).....	2.6 rpg
Kylee Beecher (T-12th).....	2.0 rpg

Defensive Rebounds

Devon Brown (T-1st).....	5.9 rpg
Avery Warley (5th).....	4.6 rpg

Field Goal Pct.

Avery Warley (1st)597
Devon Brown (4th).....	.474

Assists

Amber Mays (3rd).....	3.9 apg
-----------------------	---------

Free Throw Pct.

Devon Brown (6th).....	.719
------------------------	------

Steals

Amber Mays (3rd).....	2.3 spg
Devon Brown (5th).....	2.0 spg

Three-Point FG Made

Devon Brown (12th).....	1.2/game
-------------------------	----------

Blocked Shots

Avery Warley (8th).....	0.7 bpg
Devon Brown (13th).....	0.6 bpg

The Game is Decided by the Opening Tip

In a bit of a statistical oddity, Liberty is a perfect 17-0 when Avery Warley wins the opening tip this season.

Spreading the Wealth

Six Lady Flames scored in double figures Feb. 27 at UNC Asheville, including Avery Warley (22 points), Jelena Antic (13), Kylee Beecher (12), Devon Brown (12), LaKendra Washington (12) and Danika Dale (10). This is the second consecutive year Liberty has recorded a game with six double-digit scorers, after also accomplishing the feat versus St. Paul's in a 92-68 win on Dec. 13, 2008. Warley, Beecher and Dale were also part of the double-digit parade in that contest.

Prior to last season, Liberty had not tallied six double-digit scorers in a game since Jan. 19, 1987 against Ferrum.

Accurate Avery

Redshirt sophomore Avery Warley shot a perfect 9-for-9 from the field, Feb. 22 against Charleston Southern, setting a new Vines Center record for single-game field goal percentage. Former Lady Flame Moriah Frazee previously held the record, after shooting 8-for-8 versus Virginia Union on Nov. 30, 2007.

Warley also made her first two field goals at UNC Asheville on Feb. 27, tying her career-long streak of 11 consecutive made field goals before misfiring on her next attempt.

One Milestone Down, One to Go

Avery Warley reached a career milestone during the Feb. 15 game at Winthrop. With her putback hoop 13:42 before halftime, Warley became the 50th player in program to score 500 career points.

Warley is also closing in on the 500-rebound milestone, as she has collected 488 boards during the first 60 games of her career. Only 20 Lady Flames have ever tallied 500 career rebounds.

National Leader

Liberty, which has outrebounded 26 of its 27 opponents this season, ranks as the nation's No. 1 team in rebound margin, including games played through Feb. 28. The Lady Flames, who own a +14.7 rebound margin, have ranked among the nation's top five rebounding squads for six consecutive seasons. Liberty led the nation in rebound margin in back-to-back years, 2003-04 and 2004-05.

First-Half Defense

Points have come at a premium for Liberty's opponents during the first half this season. The Lady Flames limited Presbyterian College to 16 first-half markers on Monday, the ninth time Liberty has held its opponent under 20 points in the opening period. The Lady Flames have gone on to win all nine contests.

Only four of Liberty's first 27 opponents have managed to score 30 points during the opening 20 minutes of play. The Lady Flames are yielding an average of just 23.3 points in the first half of games in 2009-10.

No Triples? No Problem

Liberty only made one three-pointer during its win over Presbyterian College on Monday, shooting 1-5 from behind the arc. It was the 10th time this season that the Lady Flames have connected on either zero or one triples in a contest. Liberty is 9-1 in those games, despite its lack of three-point shooting.

70 is the Magic Number

Liberty is 9-0 this season when scoring at least 70 points in a game, extending a lengthy streak. The Lady Flames have now won 91 consecutive games when reaching the 70-point plateau offensively.

No. 24 Boston College was the most recent team to defeat Liberty when the Lady Flames tallied 70 points. The Eagles dealt the Lady Flames a 74-70 overtime loss, Dec. 6, 2003 at the Brown Classic.

Miscellaneous Stats For the 2009-10 Lady Flames

Team Scoring Leaders

Devon Brown	15 times
Avery Warley	7 times
Jelena Antic	3 times
Amber Mays	3 times
Kylee Beecher	1 time
Danika Dale	1 time
LaKendra Washington	1 time

20-Point Games

Devon Brown	7 times
Avery Warley	3 times
LaKendra Washington	1 time

Team Rebounding Leaders

Devon Brown	13 times
Avery Warley	12 times
Jelena Antic	3 times
Danika Dale	1 time

10-Rebound Games

Avery Warley	12 times
Devon Brown	11 times
Jelena Antic	2 times

Team Assist Leaders

Amber Mays	17 times
Rachel McLeod	6 times
Jelena Antic	4 times
Devon Brown	4 times
Dymond Morgan	3 times
Kylee Beecher	1 time
Danika Dale	1 time
Avery Warley	1 time

5-Assist Games

Amber Mays	9 times
Dymond Morgan	3 times
Rachel McLeod	1 time

Team Steal Leaders

Devon Brown	11 times
Amber Mays	11 times
Dymond Morgan	7 times
LaKendra Washington	7 times
Kylee Beecher	3 times
Rachel McLeod	3 times
Avery Warley	2 times
Jelena Antic	1 time
Danika Dale	1 time

3-Steal Games

Amber Mays	12 times
Devon Brown	11 times
Dymond Morgan	8 times
LaKendra Washington	7 times
Jelena Antic	3 times
Avery Warley	3 times
Danika Dale	2 times
Rachel McLeod	2 times
Kylee Beecher	1 time

Team Blocked Shot Leaders

Avery Warley	12 times
Devon Brown	10 times
Danika Dale	6 times
Carra Coy	5 times
Kylee Beecher	3 times
LaKendra Washington	2 times
Jelena Antic	1 time
Amber Mays	1 time

3-Block Games

Avery Warley	2 times
--------------	---------

Including Ties

Dominating Defensive Effort

The Lady Flames enjoyed a record-setting defensive performance Feb. 15 at Winthrop. Liberty established new program records for fewest points allowed (18) and lowest opponent field goal percentage (.119) during its 52-18 triumph.

Liberty also came just two points away from equaling the fewest points ever allowed in a game between two Division I women's basketball teams.

Road Winning Streak

Liberty is currently on a seven-game road winning streak. The Lady Flames have not lost a game away from the Vines Center since Jan. 2, when they lost, 70-65, at Gardner-Webb.

During the streak, Liberty has outscored its opponents by an average of 20.0 points per game and Avery Warley is averaging a double-double (14.6 ppg, 10.9 rpg).

Big Wins, Tight Losses

The Lady Flames' 22 victories this season have come by an average of 23.2 points. Liberty's tightest win was a 57-55 home victory over Coastal Carolina on Feb. 20.

Meanwhile, Liberty has lost its five games by a total of 33 points. James Madison posted the widest margin of victory over the Lady Flames, defeating Liberty 60-50, Dec. 1 at the Vines Center.

Double-Double x 2

Before Jan. 12, the Lady Flames had not seen a pair of players record double-doubles in the same game since Nov. 24, 2007. However, Liberty has accomplished the feat five times in its last 14 games.

Longwood (Jan. 12): Jelena Antic (19 pts., 10 rebs.) & Devon Brown (16 pts., 13 rebs.)
Coastal Carolina (Jan. 25): D. Brown (17 pts., 10 rebs.) & A. Warley (15 pts., 12 rebs.)
High Point (Jan. 30): Devon Brown (29 pts., 11 rebs.) & Avery Warley (26 pts., 14 rebs.)
Gardner-Webb (Feb. 8): D. Brown (13 pts., 13 rebs.) & A. Warley (15 pts., 10 rebs.)
Charleston So. (Feb. 22): D. Brown (20 pts., 12 rebs.) & A. Warley (22 pts., 10 rebs.)

Wanted for Theft

Liberty has employed an aggressive, trapping defense this season, helping the Lady Flames pace the Big South with 11.6 steals per contest. Liberty has tallied double-digit steals 20 times in its first 27 games of the year, after doing so only nine times during the entire 2008-09 campaign. Leading the way is senior Amber Mays, who has accounted for 63 of the Lady Flames' 314 thefts.

The Container is Half Full

This season, the Lady Flames are 10-0, when shooting 50 percent or higher from the field. Liberty is now 69-0 under head coach Carey Green, when the Lady Flames sink at least half of their field goals.

Painting a Masterpiece

Last season, Liberty regularly controlled the area around the basket, outscoring 29 of 33 opponents in the "points in the paint" statistical category.

This year, the Lady Flames are off to an outstanding start in racking up "points in the paint" once again. Liberty has outscored all 27 opponents inside the paint in 2009-10, by an average margin of 24.1 points (39.5 to 15.4).

16 x 10 for No. 40

Redshirt freshman Devon Brown scored a game-high 15 points during Monday's game at Presbyterian College, putting her in double figures for the 16th straight game. Gardner-Webb was the last opponent to hold the Big South's leading scorer under 10 points, limiting Brown to nine tallies on Jan. 2.

2009 graduate Megan Frazee set the school record by scoring in double figures 68 straight times (Jan. 27, 2007 through March 15, 2009).

Liberty's Record ...

When Liberty controls the tip	17-0
When opponent controls the tip.....	5-5
Played at home.....	11-2
Played on the road	9-3
Played at a neutral site	2-0
Played a team with a .500+ record.....	10-5
Played a team with a .500 record.....	2-0
Played a team with a below .500 record.....	10-0
When Liberty leads at the half	19-1
When opponent leads at the half.....	3-3
When there is a tie at the half.....	0-1
When Liberty leads with 5:00 left.....	22-1
When opponent leads with 5:00 left	0-4
When there is a tie with 5:00 left	0-0
When Liberty leads with 1:00 left.....	22-0
When opponent leads with 1:00 left	0-4
When there is a tie with 1:00 left	0-1
When Liberty outrebounds opponent	22-4
When opponent outrebounds Liberty	0-1
When the teams' rebound totals are equal...	0-0
When Liberty shoots 50% or better (FG)....	10-0
When Liberty shoots less than 50% (FG)...	12-5
When Liberty outshoots its opponents	19-2
When opponents outshoot Liberty	3-3
When the teams shoot the same pct	0-0
When Liberty shoots more 3-pointers.....	4-1
When opponent shoots more 3-pointers	18-4
When same amount of 3-pointers shot.....	0-0
When Liberty shoots more free throws.....	20-1
When opponent shoots more free throws.....	2-4
When same number of free throws taken.....	0-0
When opponent shoots 50% or better (FG)...	0-1
When opponent shoots less than 50% (FG)...	22-4
When Liberty has more turnovers	7-3
When opponent has more turnovers	12-2
When turnovers are the same	3-0
When Liberty blocks more shots	12-2
When opponent blocks more shots	6-2
When blocks are the same	4-1
When Liberty has more steals	18-4
When opponent has more steals.....	3-1
When steals are the same.....	1-0
When Liberty bench outscores opponent... 14-1	
When opponent bench outscores Liberty	8-4
When both benches score the same	0-0
When Liberty scores 50 or fewer points	0-1
When Liberty scores 51-60 points	7-2
When Liberty scores 61-70 points	7-2
When Liberty scores 71-80 points	4-0
When Liberty scores 81 or more points.....	4-0
When the game is decided by 1-5 points	1-2
When the game is decided by 6-10 points	2-3
When the game is decided by 11+ points... 19-0	
November Games	5-0
December Games	2-3
January Games	8-1
February Games.....	6-1
March Games	1-0
Sunday	0-0
Monday	7-1
Tuesday.....	3-3
Wednesday.....	0-0
Thursday.....	1-0
Friday.....	2-0
Saturday	9-1
When wearing white uniforms	13-2
When wearing red uniforms.....	2-0
When wearing blue uniforms.....	7-3

All-Time Winningest Coaches

Through 10 seasons at Liberty, head coach Carey Green remains in elite company. He ranks as the ninth-winningest NCAA Division I women's basketball coach of all time, entering the 2009-10 campaign with a .755 career winning percentage. Here is a look at the top 15 coaches on the all-time list.

Coach, Team(s)	Yrs.	Won	Lost	Pct.
1) Leon Barmore, Louisiana Tech	20	576	87	.867
2) Geno Auriemma, Connecticut	24	696	122	.851
3) Pat Summitt, Tennessee	35	1,005	193	.839
4) Tara VanDerveer, Idaho, Ohio St., Stanford	30	757	193	.797
5) Bill Sheahan, Mt. St. Mary's	17	372	104	.782
6) Robin Selvig, Montana	31	725	204	.780
7) Gail Goestenkors, Duke, Texas	17	439	124	.780
8) Wes Moore, Maryville, F. Marion, Chattanooga	20	466	132	.779
9) Carey Green, Liberty	10	237	77	.755
10) Andy Landers, Georgia	30	725	239	.752
11) Marsha Sharp, Texas Tech	24	571	189	.751
12) C. Vivian Stringer, Cheyney, Iowa, Rutgers	38	825	280	.747
13) Jody Conradt, Sam Houston St., UTA, Texas	38	900	309	.744
14) Sylvia Hatchell, F. Marion, North Carolina	34	812	282	.742
15) Van Chancellor, Mississippi, LSU	21	489	171	.741

Longest-Tenured Assistant Coaches

The 2009-10 season is Heather Stephens' seventh campaign as an assistant coach on Carey Green's coaching staff. This season, she snapped a tie with Jeri (Wiley) Porter as the longest-tenured assistant coach in Liberty women's basketball history. Porter is now the head coach at George Mason.

The Lady Flames have gone 168-50 and won five Big South titles during Stephens' tenure and made the "Sweet 16" of the 2005 NCAA Tournament.

Same Number, New Face

A new Lady Flame is wearing No. 40 this year, after Megan Frazee donned the number for the last four seasons. Among many other accomplishments and accolades, Frazee graduated as the No. 2 scorer (1,883 points) and No. 3 rebounder (951 rebounds) in program history, leaving some very big shoes to fill.

Liberty's new No. 40, Devon Brown, has worn the number proudly so far. The redshirt freshman from Waynesboro, Va. is averaging a Big South-high 16.5 ppg and 8.5 rpg. No freshman has finished the year as the conference's leading scorer since Liberty's Elena Kisseleva in 1996-97.

Tallest Since Feenstra

Carra Coy, one of three new freshmen on this year's team, stands 6-6. That makes the Summerville, S.C., native the tallest Lady Flame since 6-8 Katie Feenstra graduated after the 2004-05 campaign.

International Flavor

Freshman Jelena Antic hails from Skopje, Macedonia and sophomore Tolu Omotola was born in London, England, giving Liberty international players on its roster for the 16th consecutive season. The last time the Lady Flames' roster consisted solely of American-born players was the 1993-94 campaign. Every Carey Green-coached team at Liberty has featured at least one international player.

Local Flavor

Even though Jelena Antic was born in Macedonia, she played high school basketball at Liberty Christian Academy in Lynchburg, Va. She is one of four current Lady Flames who attended high school within 70 miles of the Liberty campus, joining Kylee Beecher (Hidden Valley), Devon Brown (Waynesboro) and Brittany Campbell (Brookville).

Top 50 Scorers in Liberty History

1. Elena Kisseleva	2,154
2. Megan Frazee	1,883
3. Katie Feenstra	1,845
4. Sharon Wilkerson	1,733
5. Sarah Wilkerson	1,331
6. Ginny Holloway	1,180
7. Sharon Snodgrass	1,169
8. Kristal Tharp	1,161
9. Moriah Frazee	1,147
10. Pam Wilder	1,120
11. Brenda Gunsallus	1,078
12. Cynthia Thomson	1,055
13. Dawn Coleman	908
14. Daina Staugaitiene	846
15. Sandra Bridges	822
16. Reggie Gomes	810
17. Kristi Mercer	809
18. Lil Cooper	808
19. Michelle Fricke	803
20. Stacey White	801
21. Malynda Keck	792
22. Sheila Ford	761
23. Pam Stanfield	752
24. Michelle Wyms	748
25. Sharon Freet	727
26. Jeri Wiley	717
27. Annetta Paraham	705
28. Trish Harris	697
29. Allyson Fasnacht	672
30. Courtney Watkins	669
31. Rachel Hammond	663
32. Harriett Blair	651
33. Meribeth Feenstra	628
34. Monique Leonard	624
35. Rachel Young	610
36. Kristina Palaimaite	600
37. Carla Weaver	594
38. Theresa Bream	589
39. Anna Barrington	579
40. Molly Frazee	571
41. Avery Warley	564
42. Missy Roberts	560
43. Erin Wall	551
44T. Beth Ralph	547
44T. Irene Sloof	547
46. Angie Johnson	545
47. Kathy Wooten	543
48. Stephanie Walker	524
49. Jennifer Fairfax	513
50. Trena Criss	509

Other Current Players:

Amber Mays	469
Devon Brown	445
Rachel McLeod	396

Tournament Tested

Liberty has played in a pair of tournaments this season, the Navy Classic (Nov. 20-21) and the Marriott Cavalier Classic (Dec. 28-29). The Lady Flames won the Navy Classic, while finishing second at this week's Marriott Cavalier Classic.

Liberty has won four regular-season tournament championships during the last three years, a list which also includes the 2008 National City Xavier Invitational, the 2008 UNLV Lady Rebel Christmas Classic and the 2009 Hokie Hardwood Classic.

Gaining Some National Recognition

Liberty earned a single vote in the most recent ESPN/USA Today Coaches Top 25 Poll, released on Dec. 8, marking the second straight week the Lady Flames received a vote.

Liberty also collected one vote in the AP Top 25 Poll, released on Nov. 30.

Lack of Overtime

Liberty has played only one overtime game in its last 206 outings, a 64-62 setback at High Point on Jan. 20, 2007. Since that contest at the Millis Center, the Lady Flames have played 105 consecutive games without needing extra time. No players on Liberty's current roster have competed in an overtime game with the Lady Flames.

The Lady Flames' most recent overtime victory came on Jan. 6, 2004, when Liberty defeated American, 76-72, on the road in double overtime.

Liberty's most recent overtime contest at the Vines Center was a memorable one. The Lady Flames defeated Virginia, 77-69, in overtime on Nov. 26, 2002, to claim their first-ever win over the Cavaliers. It also marked Liberty's first win over a ranked opponent, as Virginia entered the game with a No. 25 national ranking.

Big Shoes to Fill

Seven seniors graduated from last year's Liberty team, which went 24-9 and won its second consecutive Big South title. Alexandria Bream, Megan Frazee, Molly Frazee, Moriah Frazee, Rachel Hammond, Rebecca Lightfoot and Jessica Nelson accounted for 57.0 percent of the Lady Flames' points and 41.7 percent of the team's rebounds in 2008-09.

Headlining the group was Megan Frazee, who claimed the Big South Player of the Year and Big South Championship MVP awards.

Youth will be Served

Underclassmen have stepped up to fill the void left by the seven seniors who graduated from the 2008-09 Liberty roster. Through the first 27 games of the 2009-10 campaign, the Lady Flames' freshmen and sophomores are accounting for 73.8 percent of the team's points and 75.7 percent of Liberty's rebounds.

The Lady Flames' top five rebounders are all either freshmen or sophomores, as are four of their top five scorers.

There is Only One

Starting point guard Amber Mays is the only senior on this year's team roster. Liberty has not had so few seniors since the 2005-06 Lady Flames played the season without a single senior.

Mays has played well during her final collegiate campaign, leading the Lady Flames in assists (3.9 apg) and steals (2.3 apg), while ranking second in field goal percentage (.536) and third in scoring (8.3 ppg).

20/20 Vision

Devon Brown (29 points) and Avery Warley (26 points) both set new career highs for points during a Jan. 30, 75-62 victory at High Point. In the process, the duo became the first pair of Lady Flames to score 20 points in the same game since Megan Frazee had 22 points and sister Moriah Frazee added 20 in a 76-57 triumph over High Point on Jan. 29, 2008.

Brown and Warley were at it again, Feb. 22 against Charleston Southern. Warley paced all players with 22 points, while Brown added 20 markers of her own against the Buccaneers.

Top 50 Rebounders in Liberty History

1. Katie Feenstra	1,033
2. Sharon Snodgrass	1,026
3. Megan Frazee	951
4. Elena Kisseleva	876
5. Carla Weaver	859
6. Sharon Wilkerson	625
7. Moriah Frazee	601
8. Sharon Freet	590
9. Kristina Palaimaite	586
10. Pam Stanfield	583
11. Lil Cooper	578
12. Annetta Paraham	556
13. Meribeth Feenstra	547
14. Theresa Bream	536
15. Jennifer Fairfax	533
16T. Wendy Johnson	532
16T. Malynda Keck	532
18. Pam Wilder	529
19. Kathy Wooten	504
20. Michelle Fricke	500
21. Helen Gomes	493
22. Avery Warley	488
23. Trish Harris	484
24. Flori Willie	478
25. Michelle Wyrms	472
26. Kristal Tharp	466
27. Stacey White	456
28. Lynn Beardslee	450
29. Karolina Piotrkiewicz	445
30. Sarah Wilkerson	442
31. Erin Wall	423
32T. Ginny Holloway	420
32T. Daina Staugaitiene	420
34. Dawn Coleman	405
35. Jayne Mottershead	401
36. Sheila Ford	395
37. Angie Johnson	389
38. Trena Criss	370
39. Erma Williams	357
40. Rebecca Lightfoot	351
41. Courtney Watkins	327
42. Crystal Peace	320
43. Molly Frazee	319
44. Monique Leonard	315
45. Harriett Blair	310
46. Reggie Gomes	308
47. Jamie Feagin	303
48. Rachel Young	301
49. Roli-Ann Nikagbatse	296
50T. Rachel Hammond	287
50T. Beth Ralph	287

Other Current Players:

Kylee Beecher	251
Devon Brown	230
Rachel McLeod	188

A Tale of Two Halves

Liberty has regularly stepped up its level of play during the second half this season. The Lady Flames are outscoring opponents by an average score of 34.9-25.3 during the final 20 minutes of play, thus far this season.

Liberty is shooting .493 from the field after halftime, while limiting opponents to a .336 second-half field goal percentage.

Furious Comeback

The Lady Flames fell behind Navy, 20-4, 7:56 into the Navy Classic championship game on Nov. 21. Liberty then outscored the host Midshipmen, 51-23, during the remainder of the game to claim an improbable 55-43 victory.

It was the Lady Flames' largest comeback since Nov. 27, 2001, in a matchup with VCU at the Vines Center. The Rams owned a 38-22 advantage with 18:41 remaining in the second half, before the Lady Flames rallied for a 65-60 victory.

Furious Comeback, The Sequel

Liberty trailed host Coastal Carolina, 28-18, with 17 minutes remaining in their game on Jan. 25. The Lady Flames then outscored the Chanticleers by a 39-10 count the rest of the way, closing out their 57-38 with a game-ending 24-2 run.

Bravo to Brown

Devon Brown won the Big South Player of the Week award on Feb. 9, for the second time this season. She averaged 24.5 ppg and 11.0 rpg during the Lady Flames' road wins at High Point and Radford.

Brown is one of three conference players to capture a pair of Big South Player of the Week awards so far in 2009-10. It also marked the fourth consecutive week a Liberty player received a conference award. Jelena Antic captured back-to-back Big South Freshman of the Week plaudits on Jan. 12 and 19, while Avery Warley was recognized as Big South Player of the Week on Jan. 26.

Warley Wins

Redshirt sophomore forward Avery Warley averaged 16.5 ppg and 14.0 rpg as Liberty went 2-0 on its annual South Carolina "Beach Trip." As a result, she earned the first Big South Player of the Week award of her career on Jan. 26.

Antic Repeats

Jelena Antic claimed her second consecutive Big South Freshman of the Week certificate on Jan. 19, after averaging 13.3 ppg and 5.7 rpg in a trio of Liberty victories.

She is the first Lady Flame to win back-to-back Big South Freshman of the Week honors since Feb. 12 and 19, 2002, when Kristal Tharp accomplished the feat.

Freshman of the Week

LaKendra Washington's 21-point, four-steal performance at Lafayette on Nov. 28 was recognized by the Big South Conference on Dec. 1. The freshman guard was named the Big South Freshman of the Week, marking the second consecutive week a Liberty rookie was honored by the Big South.

First Since Frazee

After averaging 21.0 ppg and 10.7 rpg during Liberty's 3-0 week, Devon Brown was honored as Big South Player of the Week on Nov. 24. She became the first Lady Flames freshman to win the award since Megan Frazee captured it twice during her rookie season (Dec. 5, 2005 & Jan. 16, 2006).

National Statistical Rankings

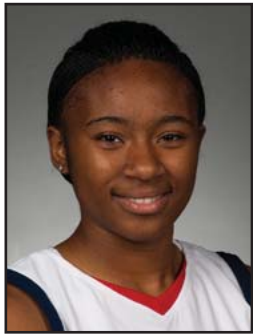
Through the contests of Feb. 28, the Lady Flames were ranked among the NCAA's top 20 teams in seven statistical categories. At that juncture, Liberty sat No. 1 in rebound margin (+14.6), No. 2 in scoring defense (48.9 ppg), No. 5 in field goal percentage (.477), No. 7 in scoring margin (+17.8), No. 8 in field goal percentage defense (.346), No. 14 in steals (11.5 spg) and No. 18 in three-point field goal percentage defense (.278).

Liberty's 2009-10 Starting Lineups

Game	Date	Opponent	Result	Guard	Guard	Guard	Forward	Forward	Record
1	Nov. 13	WSSU	W, 71-26	Mays	McLeod	Brown	Beecher	Warley	1-0
2	Nov. 17	UNCG	W, 60-42	Mays	McLeod	Brown	Beecher	Warley	2-0
3	Nov. 20	Tulane	W, 63-52	Mays	McLeod	Brown	Beecher	Warley	3-0
4	Nov. 21	Navy	W, 55-43	Mays	McLeod	Brown	Beecher	Warley	4-0
5	Nov. 28	Lafayette	W, 90-55	Mays	McLeod	Brown	Beecher	Warley	5-0
6	Dec. 1	JMU	L, 50-60	Mays	McLeod	Brown	Beecher	Warley	5-1
7	Dec. 5	Glennville St.	W, 86-45	Mays	McLeod	Brown	Beecher	Warley	6-1
8	Dec. 15	Auburn	L, 64-70	Mays	McLeod	Brown	Beecher	Warley	6-2
9	Dec. 28	Cornell	W, 70-40	Mays	McLeod	Brown	Antic	Warley	1-0
10	Dec. 29	Virginia	L, 54-63	Mays	McLeod	Brown	Antic	Warley	1-1
11	Jan. 2	G.-Webb	L, 65-70	Mays	McLeod	Brown	Antic	Warley	1-2
12	Jan. 5	N.C. A&T	W, 57-51	Mays	McLeod	Brown	Antic	Warley	2-2
13	Jan. 9	Winthrop	W, 67-38	Mays	McLeod	Brown	Antic	Warley	3-2
14	Jan. 12	Longwood	W, 78-55	Mays	McLeod	Brown	Antic	Warley	4-2
15	Jan. 16	Presbyterian	W, 73-27	Mays	McLeod	Brown	Antic	Warley	5-2
16	Jan. 18	UNCA	W, 82-40	Mays	McLeod	Brown	Antic	Warley	6-2
17	Jan. 23	CSU	W, 65-52	Mays	McLeod	Brown	Beecher	Warley	7-2
18	Jan. 25	Coastal Car.	W, 57-38	Mays	McLeod	Brown	Beecher	Warley	8-2
19	Jan. 30	High Point	W, 75-62	Mays	McLeod	Brown	Beecher	Warley	9-2
20	Feb. 1	Radford	W, 63-45	Mays	McLeod	Brown	Beecher	Warley	10-2
21	Feb. 4	N.C. Central	W, 64-44	Mays	McLeod	Brown	Beecher	Warley	11-2
22	Feb. 8	G.-Webb	L, 56-59	Mays	McLeod	Brown	Beecher	Warley	11-3
23	Feb. 15	Winthrop	W, 52-18	Mays	McLeod	Brown	Beecher	Warley	12-3
24	Feb. 20	Coastal Car.	W, 57-55	Mays	McLeod	Brown	Beecher	Warley	13-3
25	Feb. 22	CSU	W, 66-56	Mays	McLeod	Brown	Beecher	Warley	14-3
26	Feb. 27	UNCA	W, 94-66	Mays	McLeod	Brown	Beecher	Warley	15-3
27	Mar. 1	Presbyterian	W, 55-40	Mays	McLeod	Brown	Beecher	Warley	16-3

Miscellaneous Stats

Date	Opponent	LU Result	LU Big			Opp Big			LC	LU in			Opp in		Paint		Off TOs		2nd Ch		Bench	
			Lead	Lead	Ties	Lead	Lead	Tied		Lead	Lead	Tied	LU	Opp	LU	Opp	LU	Opp	LU	Opp	LU	Opp
Nov. 13	Winston-Salem State	W, 71-26	45	0	0	0	0	38:11	0:00	1:49	38	12	35	10	13	7	18	15				
Nov. 17	UNC Greensboro	W, 60-42	19	2	1	1	35:17	0:18	4:25	40	10	18	14	9	9	10	17					
Nov. 20	Tulane	W, 63-52	20	2	1	1	37:33	1:16	1:11	34	18	23	18	9	2	11	9					
Nov. 21	Navy	W, 55-43	12	16	0	1	12:24	26:56	0:40	26	12	16	12	16	6	8	11					
Nov. 28	Lafayette	W, 90-55	36	0	0	0	39:41	0:00	0:19	64	16	38	22	23	6	34	10					
Dec. 1	James Madison	L, 50-60	2	15	1	1	1:53	35:58	2:09	30	24	10	12	13	12	6	19					
Dec. 5	Glennville State	W, 86-45	42	0	0	0	39:56	0:00	0:04	64	10	19	17	15	16	34	20					
Dec. 15	Auburn	L, 64-70	2	14	2	4	0:54	37:50	1:16	42	20	16	11	6	16	8	25					
Dec. 28	Cornell	W, 70-40	36	0	0	0	39:48	0:00	0:12	44	6	22	12	15	6	24	9					
Dec. 29	No. 21/23 Virginia	L, 54-63	6	11	6	17	15:09	21:19	3:32	36	28	14	35	14	7	16	21					
Jan. 2	Gardner-Webb	L, 65-70	0	13	4	0	0:00	37:52	2:08	34	20	13	21	10	5	20	17					
Jan. 5	North Carolina A&T	W, 57-51	14	2	1	2	37:12	1:21	1:27	32	18	21	20	17	0	9	7					
Jan. 9	Winthrop	W, 67-38	35	7	2	3	30:52	5:41	3:27	34	12	29	8	10	2	25	21					
Jan. 12	Longwood	W, 78-55	24	0	0	0	39:24	0:00	0:36	54	18	27	24	19	11	19	26					
Jan. 16	Presbyterian	W, 73-27	49	0	0	0	39:45	0:00	0:15	38	12	39	6	7	4	21	12					
Jan. 18	UNC Asheville	W, 82-40	46	0	2	0	37:08	0:00	2:52	38	12	33	12	23	11	33	11					
Jan. 23	Charleston Southern	W, 65-52	18	0	0	0	39:56	0:00	0:04	48	6	13	19	16	7	9	18					
Jan. 25	Coastal Carolina	W, 57-38	19	10	5	7	17:01	17:44	5:15	20	8	25	6	18	5	9	6					
Jan. 30	High Point	W, 75-62	13	9	10	11	13:29	20:16	6:15	42	22	16	9	16	2	8	21					
Feb. 1	Radford	W, 63-45	18	2	2	1	36:57	1:12	1:51	36	12	27	13	10	14	7	17					
Feb. 4	N.C. Central	W, 64-44	20	0	0	0	39:08	0:00	0:52	42	22	17	13	20	8	21	17					
Feb. 8	Gardner-Webb	L, 56-59	9	6	2	8	26:46	10:47	2:27	34	30	18	15	15	5	9	11					
Feb. 15	Winthrop	W, 52-18	34	0	0	0	38:42	0:00	1:18	30	8	19	7	11	0	20	13					
Feb. 20	Coastal Carolina	W, 57-55	12	5	2	2	35:46	2:33	1:41	44	12	16	19	5	5	17	5					
Feb. 22	Charleston Southern	W, 66-56	17	2	4	6	33:59	3:55	2:06	44	16	29	23	22	6	10	18					
Feb. 27	UNC Asheville	W, 94-66	33	1	2	4	38:39	0:26	0:55	50	23	42	15	22	4	40	24					
Mar. 1	Presbyterian	W, 55-40	21	0	0	0	39:42	0:00	0:18	30	8	17	19	15	4	17	19					



1

**LaKendra
Washington**

*5-8 Freshman Guard
Milwaukee, Wis.
The Hope School*

Season/Career Highs

Points - 21

at Lafayette (11-28-09)

FG Made - 9

at Lafayette (11-28-09)

FG Attempts - 12 (Two times)

Most recently, at Lafayette (11-28-09)

3FG Made - 2 (Three times)

Most recently, vs. NCCU (02-04-10)

3FG Attempts - 6

vs. Winston-Salem State (11-13-09)

FT Made - 2 (Three times)

Most recently, at Lafayette (11-28-09)

FT Attempts - 4 (Two times)

Most recently, at Lafayette (11-28-09)

Rebounds - 5 (Three times)

Most recently, at Virginia (12-29-09)

Assists - 4

at UNC Asheville (02-27-10)

Steals - 5

vs. Winston-Salem State (11-13-09)

Blocks - 1 (Three times)

Most recently, vs. NCCU (02-04-10)

2009-10 Game-By-Game Statistics

OPPONENT	DATE	MIN	FG-FGA	3FG-FGA	FT-FTA	OFF-DEF-TOT	A	TO	BLK	STL	PTS
Winston-Salem St.	11-13-09	22	4-12	1-6	0-0	0-2-2	1	3	0	5	9
UNC Greensboro	11-17-09	9	0-2	0-2	2-2	0-0-0	0	0	0	1	2
Tulane	11-20-09	10	1-2	0-1	0-0	0-1-1	0	2	1	0	2
Navy	11-21-09	15	2-3	0-0	2-4	0-4-4	0	1	0	0	6
Lafayette	11-28-09	26	9-12	1-2	2-4	0-0-0	2	1	0	4	21
James Madison	12-01-09	8	1-4	0-0	0-0	1-0-1	0	0	0	0	2
Glenville St.	12-05-09	20	4-9	0-0	0-0	1-4-5	2	5	0	2	8
Auburn	12-15-09	11	1-3	0-1	0-0	0-1-1	0	0	0	0	2
Cornell	12-28-09	21	4-10	0-3	1-2	1-4-5	2	3	1	2	9
Virginia	12-29-09	15	2-4	0-0	1-1	3-2-5	1	3	0	2	5
Gardner-Webb	01-02-10	7	0-2	0-0	0-0	0-0-0	0	0	0	1	0
N.C. A&T	01-05-10	14	0-4	0-1	0-0	1-1-2	0	2	0	0	0
Winthrop	01-09-10	17	2-5	1-2	0-0	1-0-1	1	1	0	3	5
Longwood	01-12-10	8	0-2	0-2	1-2	2-0-2	1	4	0	0	1
Presbyterian	01-16-10	20	3-5	0-2	0-0	1-2-3	0	5	0	2	6
UNC Asheville	01-18-10	16	2-6	2-4	0-3	1-0-1	0	2	0	4	6
Charleston So.	01-23-10	13	2-3	0-1	0-0	0-1-1	0	0	0	1	4
Coastal Carolina	01-25-10	12	2-3	2-2	1-2	0-1-1	0	0	0	0	7
High Point	01-30-10	3	0-0	0-0	0-0	0-0-0	0	0	0	0	0
Radford	02-01-10	18	0-0	0-0	0-0	0-0-0	1	3	0	0	0
N.C. Central	02-04-10	21	2-3	2-3	0-0	1-1-2	2	4	1	3	6
Gardner-Webb	02-08-10	4	0-0	0-0	0-0	0-0-0	1	0	0	0	0
Winthrop	02-15-10	17	1-1	0-0	0-1	1-1-2	1	2	0	3	2
Coastal Carolina	02-20-10	12	2-3	0-1	0-0	0-1-1	0	0	0	0	4
Charleston So.	02-22-10	5	0-0	0-0	0-0	1-0-1	0	1	0	0	0
UNC Asheville	02-27-10	23	5-9	1-3	1-2	0-0-0	4	0	0	3	12
Presbyterian	03-01-10	23	1-2	0-1	0-1	1-1-2	0	5	0	0	2

2009-10 Notes/Highlights

- Tabbed Big South Freshman of the Week on Dec. 1.
- Became Liberty's first true freshman to score 20 points in a game since Megan Frazee during the 2005-06 season, when she exploded for 21 points at Lafayette on Nov. 28.
- Has made seven of her last 15 triples, after making only three of 22 three-point attempts during the season's first 15 games.
- Liberty has scored 90 or more points both times she has tallied double-digit points this season.

Career Stats

Season	GP	GS	Min	Avg	FG	FGA	Pct	3FG	3FGA	Pct	FT	FTA	Pct	ORB	DRB	TOT	Avg	Asst	TO	Blk	Stl	Pts	Avg
2009-10	27	0	390	14.4	50	109	.459	10	37	.270	11	24	.458	16	27	43	1.6	19	47	3	36	121	4.5



11

Jelena Antic

*6-2 Freshman G/F
Skopje, Macedonia
Liberty Christian Academy*

Season/Career Highs

Points - 19

vs. Longwood (01-12-10)

FG Made - 8

vs. Longwood (01-12-10)

FG Attempts - 11

vs. Longwood (01-12-10)

3FG Made - 2

at Gardner-Webb (01-02-10)

3FG Attempts - 3

at Auburn (12-15-09)

FT Made - 6

vs. North Carolina A&T (01-05-10)

FT Attempts - 7

vs. North Carolina A&T (01-05-10)

Rebounds - 10 (Two times)

Most recently, vs. Longwood (01-12-10)

Assists - 4

vs. North Carolina A&T (01-05-10)

Steals - 3 (Three times)

Most recently, at Presby. (03-01-10)

Blocks - 1 (Two times)

Most recently, vs. N.C. A&T (01-05-10)

2009-10 Game-By-Game Statistics

OPPONENT	DATE	MIN	FG-FGA	3FG-FGA	FT-FTA	OFF-DEF-TOT	A	TO	BLK	STL	PTS
Winston-Salem St.	11-13-09										
UNC Greensboro	11-17-09										
Tulane	11-20-09										
Navy	11-21-09	18	0-4	0-0	0-1	4-1-5	3	1	0	0	0
Lafayette	11-28-09	23	2-5	0-0	0-1	2-2-4	2	2	0	3	4
James Madison	12-01-09	12	0-3	0-1	1-2	0-4-4	0	2	0	0	1
Glenville St.	12-05-09	24	5-8	0-0	2-4	2-8-10	0	6	0	1	12
Auburn	12-15-09	23	2-8	0-3	0-0	2-1-3	1	3	0	1	4
Cornell	12-28-09	21	4-5	1-1	2-2	4-4-8	2	1	0	0	11
Virginia	12-29-09	34	2-7	1-1	0-0	3-0-3	3	1	1	0	5
Gardner-Webb	01-02-10	25	4-6	2-2	0-0	3-2-5	1	1	0	0	10
N.C. A&T	01-05-10	29	4-8	0-0	6-7	1-3-4	4	3	1	1	14
Winthrop	01-09-10	27	4-7	0-1	1-1	3-3-6	1	3	0	1	9
Longwood	01-12-10	30	8-11	0-0	3-5	5-5-10	2	5	0	2	19
Presbyterian	01-16-10	24	7-7	0-0	0-0	1-2-3	1	3	0	3	14
UNC Asheville	01-18-10	18	3-5	1-1	0-0	4-0-4	0	3	0	0	7
Charleston So.	01-23-10										
Coastal Carolina	01-25-10										
High Point	01-30-10										
Radford	02-01-10										
N.C. Central	02-04-10										
Gardner-Webb	02-08-10										
Winthrop	02-15-10										
Coastal Carolina	02-20-10	20	0-2	0-1	2-4	1-2-3	1	2	0	2	2
Charleston So.	02-22-10	19	2-4	0-0	0-2	2-4-6	3	3	0	1	4
UNC Asheville	02-27-10	24	6-8	1-1	0-0	4-1-5	2	1	0	1	13
Presbyterian	03-01-10	20	2-5	0-2	2-2	2-1-3	3	1	0	3	6

2009-10 Notes/Highlights

-- Returned to action versus Coastal Carolina on Feb. 20, after missing seven games due to a leg injury.

-- Won her second consecutive Big South Freshman of the Week award on Jan. 19, after contributing 13.3 ppg and 5.7 rpg, while shooting 78.3 percent (18-of-23) from the field, during Liberty's 3-0 week.

-- Liberty's first player to win consecutive Big South Freshman of the Week honors since Kristal Tharp did so Feb. 12 and 19, 2002.

-- Previously named Big South Freshman of the Week on Jan. 12, after posting 11.0 ppg, 5.0 rpg and 2.5 apg during wins over North Carolina A&T and Winthrop.

-- Made her first appearance in the starting lineup, Dec. 28 versus Cornell.

-- Has made 23 of her last 34 field goal attempts (.676), dating back to the second half of the Longwood game (Jan. 12).

-- Has connected on six of her last 10 three-pointers (.600), dating back to a Dec. 28 victory over Cornell.

Career Stats

Season	GP	GS	Min	Avg	FG	FGA	Pct	3FG	3FGA	Pct	FT	FTA	Pct	ORB	DRB	TOT	Avg	Asst	TO	Blk	Stl	Pts	Avg
2009-10	17	8	391	23.0	55	103	.534	6	14	.429	19	31	.613	43	43	86	5.1	29	41	2	19	135	7.9



12

Danika Dale

*6-1 Sophomore G/F
Fort Hood, Texas
Shoemaker HS*

Season Highs

Points - 15
vs. N.C. Central (02-04-10)
FG Made - 5
vs. N.C. Central (02-04-10)
FG Attempts - 8
at Winthrop (02-15-10)
3FG Made - 2
at UNC Asheville (02-27-10)
3FG Attempts - 3 (Three times)
Most recently, at UNCA (02-27-10)
FT Made - 5
vs. N.C. Central (02-04-10)
FT Attempts - 8
vs. N.C. Central (02-04-10)
Rebounds - 9
vs. Glenville State (12-05-09)
Assists - 3 (Four times)
Most recently, at UNCA (02-27-10)
Steals - 3 (Two times)
Most recently, vs. Glen. St. (12-05-09)
Blocks - 2 (Four times)
Most recently, at Radford (02-01-10)

Career Highs

Points - 15
vs. N.C. Central (02-04-10)
FG Made - 5
vs. N.C. Central (02-04-10)
FG Attempts - 8
at Winthrop (02-15-10)
3FG Made - 2 (Two times)
Most recently, at UNCA (02-27-10)
3FG Attempts - 3 (Five times)
Most recently, at UNCA (02-27-10)
FT Made - 5
vs. N.C. Central (02-04-10)
FT Attempts - 9
vs. Saint Paul's (12-13-08)
Rebounds - 9
vs. Glenville State (12-05-09)
Assists - 6
vs. Presbyterian (03-02-09)
Steals - 4
vs. Saint Paul's (12-13-08)
Blocks - 2 (Four times)
Most recently, at Radford (02-01-10)

2009-10 Game-By-Game Statistics

OPPONENT	DATE	MIN	FG-FGA	3FG-FGA	FT-FTA	OFF-DEF-TOT	A	TO	BLK	STL	PTS
Winston-Salem St.	11-13-09	23	1-5	0-2	4-4	2-5-7	3	3	2	3	6
UNC Greensboro	11-17-09	16	0-3	0-0	0-0	1-3-4	0	1	2	2	0
Tulane	11-20-09	11	0-1	0-0	0-0	1-0-1	1	1	0	2	0
Navy	11-21-09	3	0-2	0-2	0-0	1-1-2	1	0	0	0	0
Lafayette	11-28-09	15	2-2	1-1	1-2	0-4-4	1	0	0	0	6
James Madison	12-01-09	21	1-4	1-1	0-0	0-5-5	1	2	2	0	3
Glenville St.	12-05-09	19	2-3	0-0	2-3	1-8-9	3	4	0	3	6
Auburn	12-15-09	4	0-1	0-0	0-0	0-0-0	0	1	0	0	0
Cornell	12-28-09	19	2-4	0-1	1-2	3-4-7	2	0	0	0	5
Virginia	12-29-09	14	1-6	0-3	1-2	1-3-4	0	4	0	0	3
Gardner-Webb	01-02-10	12	4-5	1-2	1-2	0-0-0	1	2	0	0	10
N.C. A&T	01-05-10	10	1-2	0-0	0-1	0-2-2	1	2	0	0	2
Winthrop	01-09-10	20	2-3	0-1	0-0	2-3-5	3	1	0	1	4
Longwood	01-12-10	9	1-3	0-1	0-0	2-2-4	1	1	0	1	2
Presbyterian	01-16-10	18	2-6	1-3	0-0	2-3-5	1	3	0	1	5
UNC Asheville	01-18-10	12	2-4	0-1	1-1	2-1-3	1	2	1	1	5
Charleston So.	01-23-10	19	1-4	0-1	1-2	2-2-4	2	3	0	1	3
Coastal Carolina	01-25-10	24	0-2	0-0	0-0	0-4-4	2	1	1	2	0
High Point	01-30-10	21	0-2	0-0	2-2	1-1-2	0	0	0	1	2
Radford	02-01-10	20	1-2	0-0	0-0	0-1-1	0	1	2	1	2
N.C. Central	02-04-10	23	5-7	0-0	5-8	2-1-3	2	3	1	0	15
Gardner-Webb	02-08-10	21	2-3	1-1	1-1	0-0-0	0	1	0	0	6
Winthrop	02-15-10	23	4-8	0-0	3-3	1-4-5	0	5	0	0	11
Coastal Carolina	02-20-10	12	1-1	0-0	3-4	0-0-0	0	0	0	0	5
Charleston So.	02-22-10	9	0-0	0-0	1-2	0-0-0	0	0	0	0	1
UNC Asheville	02-27-10	19	3-6	2-3	2-7	1-3-4	3	3	0	1	10
Presbyterian	03-01-10	17	1-6	0-0	0-0	1-2-3	0	0	0	0	2

2009-10 Notes/Highlights

Career Stats

Season	GP	GS	Min	Avg	FG	FGA	Pct	3FG	3FGA	Pct	FT	FTA	Pct	ORB	DRB	TOT	Avg	Asst	TO	Blk	Stl	Pts	Avg
2008-09	26	0	254	9.8	16	45	.356	3	15	.200	8	18	.444	10	33	43	1.7	21	27	2	12	43	1.7
2009-10	27	0	434	16.1	39	95	.411	7	23	.304	29	46	.630	26	62	88	3.3	29	44	11	20	114	4.2
TOTAL	53	0	688	13.0	55	140	.393	10	38	.263	37	64	.578	36	95	131	2.5	50	71	13	32	157	3.0



15

Kylee Beecher
6-4 Sophomore F
Roanoke, Va.
Hidden Valley HS

Season Highs

Points - 14 (Two times)

Most recently, vs. UNCA (01-18-10)

FG Made - 7

vs. Glenville State (12-05-09)

FG Attempts - 9

at Charleston So. (01-23-10)

3FG Made - 1

at Winthrop (02-15-10)

3FG Attempts - 2 (Three times)

Most recently, at Winthrop (02-15-10)

FT Made - 8

vs. UNC Asheville (01-18-10)

FT Attempts - 10

vs. UNC Asheville (01-18-10)

Rebounds - 9 (Four times)

Most recently, at UNCA (02-27-10)

Assists - 4

vs. N.C. Central (02-04-10)

Steals - 3

at Radford (02-01-10)

Blocks - 2

at Winthrop (02-15-10)

Career Highs

Points - 18

vs. Saint Paul's (12-13-08)

FG Made - 7

vs. Glenville State (12-05-09)

FG Attempts - 10

vs. Saint Paul's (12-13-08)

3FG Made - 1 (Three times)

Most recently, at Winthrop (02-15-10)

3FG Attempts - 2 (Five times)

Most recently, at Winthrop (02-15-10)

FT Made - 8

vs. UNC Asheville (01-18-10)

FT Attempts - 10

vs. UNC Asheville (01-18-10)

Rebounds - 10 (Three times)

Most recently, vs. High Point (01-31-09)

Assists - 5

vs. Saint Paul's (12-13-08)

Steals - 3 (Three times)

Most recently, at Radford (02-01-10)

Blocks - 2

at Winthrop (02-15-10)

2009-10 Game-By-Game Statistics

OPPONENT	DATE	MIN	FG-FGA	3FG-FGA	FT-FTA	OFF-DEF-TOT	A	TO	BLK	STL	PTS
Winston-Salem St.	11-13-09	23	2-3	0-0	4-4	1-1-2	2	0	1	0	8
UNC Greensboro	11-17-09	37	4-8	0-0	3-7	2-3-5	0	4	0	0	11
Tulane	11-20-09	36	3-5	0-0	0-0	3-0-3	2	4	0	1	6
Navy	11-21-09	36	2-8	0-1	0-0	0-2-2	0	2	0	1	4
Lafayette	11-28-09	25	2-2	0-0	1-2	1-2-3	2	0	1	0	5
James Madison	12-01-09	26	2-4	0-0	0-0	3-3-6	1	1	1	2	4
Glenville St.	12-05-09	21	7-8	0-0	0-0	4-2-6	0	1	0	0	14
Auburn	12-15-09	25	1-4	0-0	5-6	0-0-0	1	0	0	2	7
Cornell	12-28-09	20	2-6	0-2	1-2	3-0-3	0	4	0	0	5
Virginia	12-29-09	21	2-4	0-1	2-2	2-0-2	0	0	0	0	6
Gardner-Webb	01-02-10	16	1-3	0-1	2-3	0-3-3	0	1	0	0	4
N.C. A&T	01-05-10	18	0-1	0-0	0-0	0-3-3	0	4	1	1	0
Winthrop	01-09-10	19	2-3	0-0	1-1	0-2-2	2	1	1	1	5
Longwood	01-12-10	25	3-5	0-0	4-5	1-5-6	1	3	0	0	10
Presbyterian	01-16-10	18	1-1	0-0	3-6	0-3-3	1	2	0	1	5
UNC Asheville	01-18-10	27	3-8	0-0	8-10	2-3-5	2	2	0	2	14
Charleston So.	01-23-10	33	4-9	0-0	2-2	4-5-9	0	2	0	2	10
Coastal Carolina	01-25-10	32	2-6	0-0	2-2	8-1-9	1	2	0	1	6
High Point	01-30-10	21	0-4	0-1	3-4	2-2-4	2	0	0	0	3
Radford	02-01-10	38	5-8	0-0	3-4	3-6-9	0	4	0	3	13
N.C. Central	02-04-10	19	1-7	0-0	1-2	1-1-2	4	3	0	0	3
Gardner-Webb	02-08-10	30	2-6	0-2	0-0	3-1-4	2	0	0	1	4
Winthrop	02-15-10	29	2-7	1-2	4-6	1-4-5	1	0	2	1	9
Coastal Carolina	02-20-10	25	4-7	0-1	1-1	1-0-1	0	2	0	1	9
Charleston So.	02-22-10	28	0-3	0-1	4-4	1-1-2	1	1	0	0	4
UNC Asheville	02-27-10	17	3-7	0-0	6-7	6-3-9	0	3	0	0	12
Presbyterian	03-01-10	18	1-2	0-0	0-0	2-1-3	0	2	0	0	2

2009-10 Notes/Highlights

-- Tied for No. 12 in the Big South with 2.0 offensive rebounds per game.

Career Stats

Season	GP	GS	Min	Avg	FG	FGA	Pct	3FG	3FGA	Pct	FT	FTA	Pct	ORB	DRB	TOT	Avg	Asst	TO	Blk	Stl	Pts	Avg
2008-09	31	4	664	21.4	54	118	.458	2	7	.286	27	38	.711	43	97	140	4.5	19	45	2	18	137	4.4
2009-10	27	19	683	25.3	61	139	.439	1	12	.083	60	80	.750	54	57	111	4.1	25	48	7	20	183	6.8
TOTAL	58	23	1347	23.2	115	257	.447	3	19	.158	87	118	.737	97	154	251	4.3	44	93	9	38	320	5.5



21
Amber Mays
5-6 Senior Guard
Pasadena, Calif.
Pasadena HS
(State Fair CC)

Season Highs

Points - 18
at Auburn (12-15-09)
FG Made - 9
at Auburn (12-15-09)
FG Attempts - 15
vs. James Madison (12-01-09)
3FG Made - 2
vs. UNC Asheville (01-18-10)
3FG Attempts - 2
vs. UNC Asheville (01-18-10)
FT Made - 4 (Two times)
Most recently, at Coastal (01-25-10)
FT Attempts - 7
at Coastal Carolina (01-25-10)
Rebounds - 5 (Two times)
Most recently, at High Point (01-30-10)
Assists - 10
vs. Winthrop (01-09-10)
Steals - 5
vs. Longwood (01-12-10)
Blocks - 1
at Charleston So. (01-23-10)

Career Highs

Points - 18
at Auburn (12-15-09)
FG Made - 9
at Auburn (12-15-09)
FG Attempts - 15
vs. James Madison (12-01-09)
3FG Made - 2 (Two times)
Most recently, vs. UNCA (01-18-10)
3FG Attempts - 3
at Vanderbilt (12-22-08)
FT Made - 6
at UNC Asheville (01-19-09)
FT Attempts - 8
vs. UC Riverside (11-21-08)
Rebounds - 6 (Two times)
Most recently, vs. Radford (02-02-09)
Assists - 10
vs. Winthrop (01-09-10)
Steals - 8
vs. East Tennessee St. (01-13-09)
Blocks - 1 (Three times)
Most recently, at CSU (01-23-10)

2009-10 Game-By-Game Statistics

OPPONENT	DATE	MIN	FG-FGA	3FG-FGA	FT-FTA	OFF-DEF-TOT	A	TO	BLK	STL	PTS
Winston-Salem St.	11-13-09	24	3-7	0-0	1-2	0-0-0	6	1	0	4	7
UNC Greensboro	11-17-09	26	4-7	1-1	2-6	0-1-1	4	5	0	4	11
Tulane	11-20-09	33	4-6	0-0	2-4	0-2-2	3	4	0	4	10
Navy	11-21-09	30	2-5	0-0	4-5	2-0-2	5	3	0	1	8
Lafayette	11-28-09	31	4-6	0-0	3-4	1-3-4	4	5	0	4	11
James Madison	12-01-09	33	7-15	0-1	0-1	0-2-2	2	1	0	1	14
Glenville St.	12-05-09	18	2-3	0-0	1-2	0-2-2	4	2	0	2	5
Auburn	12-15-09	35	9-13	0-0	0-0	0-1-1	3	6	0	4	18
Cornell	12-28-09	20	2-2	0-0	0-0	0-2-2	8	2	0	4	4
Virginia	12-29-09	28	2-4	0-0	3-4	0-0-0	3	7	0	3	7
Gardner-Webb	01-02-10	33	4-9	0-0	2-6	3-2-5	6	4	0	1	10
N.C. A&T	01-05-10	25	2-4	0-0	0-0	0-2-2	3	2	0	1	4
Winthrop	01-09-10	22	1-3	0-0	1-2	0-0-0	10	2	0	2	3
Longwood	01-12-10	30	3-4	1-1	0-0	0-0-0	3	5	0	5	7
Presbyterian	01-16-10	21	4-6	0-0	0-0	0-2-2	6	1	0	2	8
UNC Asheville	01-18-10	23	5-8	2-2	2-2	1-0-1	5	0	0	3	14
Charleston So.	01-23-10	27	6-9	0-0	2-5	0-0-0	3	1	1	1	14
Coastal Carolina	01-25-10	31	2-6	0-1	4-7	1-1-2	2	4	0	2	8
High Point	01-30-10	26	2-6	0-0	3-4	0-5-5	2	6	0	1	7
Radford	02-01-10	24	4-6	0-0	2-4	1-0-1	7	5	0	3	10
N.C. Central	02-04-10	28	3-6	0-0	2-2	0-2-2	8	4	0	1	8
Gardner-Webb	02-08-10	34	2-7	0-1	2-6	1-0-1	3	2	0	2	6
Winthrop	02-15-10	20	0-1	0-0	1-2	0-1-1	1	4	0	0	1
Coastal Carolina	02-20-10	34	6-10	0-0	0-0	1-2-3	2	1	0	1	12
Charleston So.	02-22-10	20	2-3	0-0	2-4	0-0-0	0	5	0	1	6
UNC Asheville	02-27-10	19	2-6	0-0	2-4	0-2-2	2	2	0	3	6
Presbyterian	03-01-10	25	2-4	0-0	1-1	0-1-1	1	3	0	3	5

2009-10 Notes/Highlights

- The only senior on Liberty's 2009-10 roster.
- Leads the Big South in assist-to-turnover ratio (1.22), while ranking No. 3 in both assists (3.9 apg) and steals (2.3 spg).
- Distributed a career-high 10 assists against Winthrop (Jan. 9), the most by a Lady Flame since Daina Staugaitiene's 10 assists versus Morgan State on Nov. 22, 2002.
- Had recorded a steal in 24 consecutive games, prior to the Feb. 15 game at Winthrop. Has notched a steal in 36 of her last 38 outings.
- First Lady Flame to distribute 100 assists and come up with 50 steals in back-to-back seasons since Sarah Wilkerson did so three straight years (1996-97, 1997-98 and 1998-99).
- Needs 31 points to become the 51st player in program history to score 500 career points.

Career Stats

Season	GP	GS	Min	Avg	FG	FGA	Pct	3FG	3FGA	Pct	FT	FTA	Pct	ORB	DRB	TOT	Avg	Asst	TO	Blk	Stl	Pts	Avg
2008-09	33	31	1002	30.4	92	201	.458	5	15	.333	56	86	.651	11	75	86	2.6	126	114	2	68	245	7.4
2009-10	27	27	720	26.7	89	166	.536	4	7	.571	42	77	.545	11	33	44	1.6	106	87	1	63	224	8.3
TOTAL	60	58	1722	28.7	181	367	.493	9	22	.409	98	163	.601	22	108	130	2.2	232	201	3	131	469	7.8



23

Avery Warley
6-3 R-Sophomore F
Washington, D.C.
H.D. Woodson HS

Season Highs

Points - 26
at High Point (01-30-10)
FG Made - 9 (Two times)
Most recently, vs. CSU (02-22-10)
FG Attempts - 14
at UNC Asheville (02-27-10)
3FG Made - 0
None
3FG Attempts - 1
at UNC Asheville (02-27-10)
FT Made - 8
at High Point (01-30-10)
FT Attempts - 11
at High Point (01-30-10)
Rebounds - 16
at Charleston So. (01-23-10)
Assists - 2 (Three times)
Most recently, vs. UNCA (01-18-10)
Steals - 3 (Three times)
Most recently, vs. CSU (02-22-10)
Blocks - 3 (Two times)
Most recently, at Winthrop (02-15-10)

Career Highs

Points - 26
at High Point (01-30-10)
FG Made - 9 (Two times)
Most recently, vs. CSU (02-22-10)
FG Attempts - 14
at UNC Asheville (02-27-10)
3FG Made - 0
None
3FG Attempts - 1
at UNC Asheville (02-27-10)
FT Made - 8
at High Point (01-30-10)
FT Attempts - 11
at High Point (01-30-10)
Rebounds - 18
at Virginia Tech (12-30-08)
Assists - 3
vs. Saint Paul's (12-13-08)
Steals - 3 (Five times)
Most recently, vs. CSU (02-22-10)
Blocks - 4 (Two times)
Most recently, vs. Winthrop (02-16-09)

2009-10 Game-By-Game Statistics

OPPONENT	DATE	MIN	FG-FGA	3FG-FGA	FT-FTA	OFF-DEF-TOT	A	TO	BLK	STL	PTS
Winston-Salem St.	11-13-09	26	2-6	0-0	0-2	4-5-9	2	5	0	0	4
UNC Greensboro	11-17-09	19	0-0	0-0	0-0	2-5-7	0	1	0	1	0
Tulane	11-20-09	37	4-10	0-0	1-2	6-5-11	1	4	0	1	9
Navy	11-21-09	32	5-7	0-0	0-0	3-3-6	0	6	0	0	10
Lafayette	11-28-09	21	8-13	0-0	3-3	8-3-11	0	1	0	0	19
James Madison	12-01-09	29	3-7	0-0	3-4	3-4-7	2	2	0	1	9
Glenville St.	12-05-09	25	3-6	0-0	1-4	2-4-6	0	1	1	0	7
Auburn	12-15-09	33	4-6	0-0	2-2	3-3-6	0	2	0	0	10
Cornell	12-28-09	22	4-5	0-0	2-6	2-5-7	0	2	1	1	10
Virginia	12-29-09	32	6-12	0-0	0-0	3-5-8	0	5	0	2	12
Gardner-Webb	01-02-10	26	4-8	0-0	2-5	3-3-6	0	5	1	3	10
N.C. A&T	01-05-10	26	4-8	0-0	1-4	6-5-11	0	5	0	2	9
Winthrop	01-09-10	23	2-2	0-0	1-2	1-4-5	1	5	1	1	5
Longwood	01-12-10	21	6-7	0-0	0-1	3-2-5	1	1	0	0	12
Presbyterian	01-16-10	25	1-2	0-0	4-7	2-0-2	0	3	0	1	6
UNC Asheville	01-18-10	24	2-8	0-0	2-6	4-6-10	2	2	3	0	6
Charleston So.	01-23-10	30	8-12	0-0	2-4	5-11-16	0	2	0	0	18
Coastal Carolina	01-25-10	28	6-9	0-0	3-8	7-5-12	0	2	1	0	15
High Point	01-30-10	38	9-13	0-0	8-11	5-9-14	0	0	1	2	26
Radford	02-01-10	24	2-4	0-0	0-0	1-4-5	0	1	2	1	4
N.C. Central	02-04-10	34	8-11	0-0	0-1	6-5-11	0	2	1	1	16
Gardner-Webb	02-08-10	32	5-10	0-0	5-7	3-7-10	0	3	2	1	15
Winthrop	02-15-10	26	2-3	0-0	0-0	3-5-8	1	1	3	2	4
Coastal Carolina	02-20-10	20	2-6	0-0	1-2	4-4-8	1	4	1	3	5
Charleston So.	02-22-10	34	9-9	0-0	4-9	6-4-10	1	2	0	3	22
UNC Asheville	02-27-10	20	8-14	0-1	6-9	7-3-10	0	1	0	2	22
Presbyterian	03-01-10	26	3-3	0-0	7-7	5-6-11	0	5	1	2	13

2009-10 Notes/Highlights

- Set the Vines Center single-game field goal percentage record Feb. 22 versus Charleston Southern, connecting on all nine of her attempts. Made 11 consecutive field goals overall, including her first two shots at UNC Asheville on Feb. 27.
- Shot 7-7 from the free throw line, Monday at Presbyterian. Has now hit a career-best 12 consecutive foul shots, since the second half of the UNC Asheville game on Feb. 27.
- Named Big South Player of the Week on Jan. 26, after averaging 16.5 ppg and 14.0 rpg during Liberty's 2-0 South Carolina "Beach Trip."
- Leads the Big South in field goal percentage (.597) and ranks No. 2 in both offensive rebounds (4.0 rpg) and total rebounds (8.6 rpg), No. 5 in defensive rebounds (4.6 rpg), No. 8 in blocked shots (0.7 bpg) and No. 10 in scoring (11.0 ppg).
- Named to the Marriott Cavalier Classic all-tournament team, after averaging 11.0 ppg and 7.5 rpg in two games.
- Has tallied 488 career boards, putting her in 22nd place in program history. Needs 12 rebounds to become the 21st Lady Flame ever to tally 500 caroms.
- Has scored 564 career points, putting her in 41st place in program history.
- Has notched nine double-doubles this season (at Lafayette on Nov. 28; at Charleston Southern on Jan. 23; at Coastal Carolina on Jan. 25; at High Point on Jan. 30; vs. N.C. Central on Feb. 4; vs. Gardner-Webb on Feb. 8; vs. Charleston Southern on Feb. 22; at UNC Asheville on Feb. 27; at Presbyterian on March 1) and 11 in her career.

Career Stats

Season	GP	GS	Min	Avg	FG	FGA	Pct	3FG	3FGA	Pct	FT	FTA	Pct	ORB	DRB	TOT	Avg	Asst	TO	Blk	Stl	Pts	Avg
2008-09	33	33	832	25.2	112	179	.626	0	0	.000	42	81	.519	85	171	256	7.8	11	76	47	23	266	8.1
2009-10	27	27	733	27.1	120	201	.597	0	1	.000	58	106	.547	107	125	232	8.6	12	73	19	30	298	11.0
TOTAL	60	60	1565	26.1	232	380	.611	0	1	.000	100	187	.535	192	296	488	8.1	23	149	66	53	564	9.4



25

Dymond Morgan

5-7 Junior Guard

Lynwood, Calif.

Lynwood HS

(Midland College)

Season/Career Highs

Points - 11

vs. Winthrop (01-09-10)

FG Made - 4

vs. Winthrop (01-09-10)

FG Attempts - 7 (Two times)

Most recently, at Winthrop (02-15-10)

3FG Made - 2

vs. Winthrop (01-09-10)

3FG Attempts - 3 (Two times)

Most recently, at Winthrop (02-15-10)

FT Made - 4

at Presbyterian (03-01-10)

FT Attempts - 4 (Three times)

Most recently, at Presby. (03-01-10)

Rebounds - 7

vs. Glenville State (12-05-09)

Assists - 7

vs. Glenville State (12-05-09)

Steals - 5

vs. Presbyterian (01-16-10)

Blocks - 0

None

2009-10 Game-By-Game Statistics

OPPONENT	DATE	MIN	FG-FGA	3FG-FGA	FT-FTA	OFF-DEF-TOT	A	TO	BLK	STL	PTS
Winston-Salem St.	11-13-09	16	0-2	0-0	0-0	1-3-4	1	2	0	1	0
UNC Greensboro	11-17-09	24	3-5	0-1	0-0	1-4-5	2	2	0	1	6
Tulane	11-20-09	18	3-6	1-1	2-2	0-2-2	0	4	0	2	9
Navy	11-21-09	15	1-2	0-0	0-0	1-2-3	0	2	0	0	2
Lafayette	11-28-09	4	0-1	0-0	1-2	0-0-0	0	1	0	0	1
James Madison	12-01-09	7	0-0	0-0	0-0	0-0-0	0	1	0	0	0
Glenville St.	12-05-09	22	2-2	0-0	2-3	0-7-7	7	8	0	1	6
Auburn	12-15-09	10	1-1	0-0	0-0	0-2-2	0	0	0	1	2
Cornell	12-28-09	22	0-3	0-0	2-2	1-0-1	1	5	0	3	2
Virginia	12-29-09	12	1-2	0-0	0-0	1-0-1	0	3	0	0	2
Gardner-Webb	01-02-10	13	2-4	0-0	2-3	0-1-1	1	0	0	2	6
N.C. A&T	01-05-10	17	2-3	0-0	1-2	0-0-0	1	1	0	3	5
Winthrop	01-09-10	20	4-7	2-3	1-2	0-1-1	1	1	0	2	11
Longwood	01-12-10	15	2-6	0-1	2-2	0-3-3	3	2	0	1	6
Presbyterian	01-16-10	18	2-3	0-0	1-1	0-0-0	4	2	0	5	5
UNC Asheville	01-18-10	22	3-6	0-2	0-0	0-2-2	6	2	0	4	6
Charleston So.	01-23-10	13	0-2	0-1	2-3	0-1-1	0	3	0	0	2
Coastal Carolina	01-25-10	14	1-5	0-2	0-0	0-0-0	1	1	0	0	2
High Point	01-30-10	19	1-5	1-1	3-4	0-0-0	1	1	0	3	6
Radford	02-01-10	17	1-5	0-0	3-4	1-2-3	1	3	0	3	5
N.C. Central	02-04-10	12	0-3	0-2	0-0	1-0-1	1	1	0	0	0
Gardner-Webb	02-08-10	9	1-2	0-1	1-2	0-0-0	1	0	0	0	3
Winthrop	02-15-10	23	2-7	1-3	0-0	0-1-1	1	5	0	2	5
Coastal Carolina	02-20-10	14	1-2	0-0	1-2	0-1-1	1	1	0	0	3
Charleston So.	02-22-10	23	2-5	0-1	1-2	0-1-1	2	3	0	3	5
UNC Asheville	02-27-10	20	1-6	0-1	0-2	0-0-0	5	2	0	1	2
Presbyterian	03-01-10	15	1-5	0-0	4-4	0-0-0	0	2	0	3	6

2009-10 Notes/Highlights

Career Stats

Season	GP	GS	Min	Avg	FG	FGA	Pct	3FG	3FGA	Pct	FT	FTA	Pct	ORB	DRB	TOT	Avg	Asst	TO	Blk	Stl	Pts	Avg
2009-10	27	0	434	16.1	37	100	.370	5	20	.250	29	42	.690	7	33	40	1.5	41	59	0	41	108	4.0



30

Brittany Campbell
6-0 R-Freshman Guard
Rustburg, Va.
Brookville HS

Career Highs

Points - 11

vs. Hartford (11-28-08)

FG Made - 4

vs. Hartford (11-28-08)

FG Attempts - 12

at James Madison (12-02-08)

3FG Made - 3

at James Madison (12-02-08)

3FG Attempts - 7

at James Madison (12-02-08)

FT Made - 3

vs. South Alabama (11-29-08)

FT Attempts - 3 (Two times)

Most recently, vs. S. Alabama (11-29-08)

Rebounds - 3 (Three times)

Most recently, at JMU (12-02-08)

Assists - 1

vs. Hartford (11-28-08)

Steals - 2

vs. South Alabama (11-29-08)

Blocks - 1

vs. South Alabama (11-29-08)

2009-10 Game-By-Game Statistics

OPPONENT	DATE	MIN	FG-FGA	3FG-FGA	FT-FTA	OFF-DEF-TOT	A	TO	BLK	STL	PTS
Winston-Salem St.	11-13-09										Did not play
UNC Greensboro	11-17-09										Did not play
Tulane	11-20-09										Did not play
Navy	11-21-09										Did not play
Lafayette	11-28-09										Did not play
James Madison	12-01-09										Did not play
Glenville St.	12-05-09										Did not play
Auburn	12-15-09										Did not play
Cornell	12-28-09										Did not play
Virginia	12-29-09										Did not play
Gardner-Webb	01-02-10										Did not play
N.C. A&T	01-05-10										Did not play
Winthrop	01-09-10										Did not play
Longwood	01-12-10										Did not play
Presbyterian	01-16-10										Did not play
UNC Asheville	01-18-10										Did not play
Charleston So.	01-23-10										Did not play
Coastal Carolina	01-25-10										Did not play
High Point	01-30-10										Did not play
Radford	02-01-10										Did not play
N.C. Central	02-04-10										Did not play
Gardner-Webb	02-08-10										Did not play
Winthrop	02-15-10										Did not play
Coastal Carolina	02-20-10										Did not play
Charleston So.	02-22-10										Did not play
UNC Asheville	02-27-10										Did not play
Presbyterian	03-01-10										Did not play

2009-10 Notes/Highlights

-- Has missed the first 27 games of the 2009-10 season, due to a knee injury.

Career Stats

Season	GP	GS	Min	Avg	FG	FGA	Pct	3FG	3FGA	Pct	FT	FTA	Pct	ORB	DRB	TOT	Avg	Asst	TO	Blk	Stl	Pts	Avg
2008-09	5	1	104	20.8	11	31	.355	6	18	.333	7	9	.778	5	6	11	2.2	1	6	1	4	35	7.0



32

Rachel McLeod
5-10 Junior Guard
Houston, Texas
Home Schooled

Season Highs

Points - 11

vs. Presbyterian (01-16-10)

FG Made - 4 (Two times)

Most recently, vs. G.-Webb (02-08-10)

FG Attempts - 8 (Two times)

Most recently, vs. NCCU (02-04-10)

3FG Made - 2

vs. UNC Asheville (01-18-10)

3FG Attempts - 3 (Three times)

Most recently, vs. UNCA (01-18-10)

FT Made - 5

at Radford (02-01-10)

FT Attempts - 6

at Radford (02-01-10)

Rebounds - 8

at Gardner-Webb (01-02-10)

Assists - 7

vs. Glenville State (12-05-09)

Steals - 4

vs. UNC Asheville (01-18-10)

Blocks - 1

vs. Longwood (01-12-10)

Career Highs

Points - 13

at Coastal Carolina (02-21-09)

FG Made - 4 (Six times)

Most recently, vs. G.-Webb (02-08-10)

FG Attempts - 13

at Old Dominion (03-23-08)

3FG Made - 2 (Four times)

Most recently, vs. UNCA (01-18-10)

3FG Attempts - 5

at Old Dominion (03-23-08)

FT Made - 5 (Two times)

Most recently, at Radford (02-01-10)

FT Attempts - 6 (Two times)

Most recently, at Radford (02-01-10)

Rebounds - 8 (Two times)

Most recently, at G.-Webb (01-02-10)

Assists - 8

vs. High Point (03-15-08)

Steals - 4 (Two times)

Most recently, vs. UNCA (01-18-10)

Blocks - 1 (Eight times)

Most recently, vs. Longwood (01-12-10)

2009-10 Game-By-Game Statistics

OPPONENT	DATE	MIN	FG-FGA	3FG-FGA	FT-FTA	OFF-DEF-TOT	A	TO	BLK	STL	PTS
Winston-Salem St.	11-13-09	25	3-5	0-1	2-2	1-0-1	2	0	0	2	8
UNC Greensboro	11-17-09	25	1-7	0-3	0-0	0-1-1	2	3	0	2	2
Tulane	11-20-09	23	3-4	0-0	3-5	0-2-2	2	2	0	0	9
Navy	11-21-09	18	3-4	0-0	0-2	1-1-2	0	1	0	0	6
Lafayette	11-28-09	18	1-4	0-0	2-2	0-1-1	0	1	0	1	4
James Madison	12-01-09	23	3-6	0-3	2-2	0-1-1	0	4	0	1	8
Glenville St.	12-05-09	18	2-6	0-0	2-4	1-1-2	7	2	0	2	6
Auburn	12-15-09	22	0-6	0-0	2-2	0-1-1	1	1	0	0	2
Cornell	12-28-09	17	1-2	1-1	0-0	0-0-0	0	2	0	0	3
Virginia	12-29-09	19	2-2	0-0	1-1	0-2-2	0	3	0	0	5
Gardner-Webb	01-02-10	32	2-4	0-0	2-2	2-6-8	2	4	0	0	6
N.C. A&T	01-05-10	25	1-8	0-0	2-2	2-0-2	1	0	0	1	4
Winthrop	01-09-10	20	2-3	0-0	0-0	1-2-3	2	0	0	1	4
Longwood	01-12-10	27	2-6	0-0	1-2	0-2-2	4	2	1	0	5
Presbyterian	01-16-10	20	4-6	1-1	2-2	1-2-3	1	0	0	2	11
UNC Asheville	01-18-10	23	3-7	2-3	2-2	1-4-5	3	0	0	4	10
Charleston So.	01-23-10	29	0-3	0-0	3-4	1-1-2	1	1	0	0	3
Coastal Carolina	01-25-10	30	1-5	0-0	0-0	2-1-3	2	2	0	1	2
High Point	01-30-10	32	0-3	0-1	2-2	1-0-1	2	3	0	0	2
Radford	02-01-10	21	2-4	0-0	5-6	0-1-1	2	1	0	1	9
N.C. Central	02-04-10	30	3-8	0-0	0-0	2-2-4	1	1	0	0	6
Gardner-Webb	02-08-10	33	4-7	1-2	0-0	2-0-2	3	2	0	2	9
Winthrop	02-15-10	28	1-4	0-2	1-2	2-2-4	1	1	0	3	3
Coastal Carolina	02-20-10	24	0-2	0-0	0-0	0-2-2	3	1	0	0	0
Charleston So.	02-22-10	27	2-4	0-0	0-0	1-1-2	1	0	0	1	4
UNC Asheville	02-27-10	19	0-4	0-0	2-2	1-0-1	4	0	0	2	2
Presbyterian	03-01-10	26	1-6	1-1	0-0	2-1-3	0	2	0	2	3

2009-10 Notes/Highlights

-- Scored in double figures in back-to-back games for the first time in her career, Jan. 16 vs. Presbyterian and Jan. 18 vs. UNC Asheville.

Career Stats

Season	GP	GS	Min	Avg	FG	FGA	Pct	3FG	3FGA	Pct	FT	FTA	Pct	ORB	DRB	TOT	Avg	Asst	TO	Blk	Stl	Pts	Avg
2007-08	32	0	531	16.6	50	108	.463	12	33	.364	27	41	.659	10	46	56	1.8	66	60	4	25	139	4.3
2008-09	30	5	622	20.7	39	120	.325	9	34	.265	34	45	.756	11	60	71	2.4	73	82	3	29	121	4.0
2009-10	27	27	654	24.2	47	130	.362	6	18	.333	36	46	.783	24	37	61	2.3	47	39	1	28	136	5.0
TOTAL	89	32	1807	20.3	136	358	.380	27	85	.318	97	132	.735	45	143	188	2.1	186	181	8	82	396	4.4



40

Devon Brown

*5-10 R-Freshman G
Waynesboro, Va.
Waynesboro HS*

Season/Career Highs

Points - 29

at High Point (01-30-10)

FG Made - 12

at High Point (01-30-10)

FG Attempts - 18

vs. Gardner-Webb (02-08-10)

3FG Made - 3 (Four times)

Most recently, vs. Presby. (01-16-10)

3FG Attempts - 6 (Three times)

Most recently, vs. CSU (02-22-10)

FT Made - 8 (Two times)

Most recently, at Radford (02-01-10)

FT Attempts - 9 (Three times)

Most recently, at Presby. (03-01-10)

Rebounds - 13 (Four times)

Most recently, vs. G.-Webb (02-08-10)

Assists - 4 (Two times)

Most recently, at CSU (01-23-10)

Steals - 5 (Two times)

Most recently, vs. Coastal (02-20-10)

Blocks - 2 (Four times)

Most recently, at High Point (01-30-10)

2009-10 Game-By-Game Statistics

OPPONENT	DATE	MIN	FG-FGA	3FG-FGA	FT-FTA	OFF-DEF-TOT	A	TO	BLK	STL	PTS
Winston-Salem St.	11-13-09	22	11-14	3-5	1-1	4-3-7	1	2	0	0	26
UNC Greensboro	11-17-09	30	11-15	1-2	3-7	4-5-9	2	3	0	3	26
Tulane	11-20-09	32	6-13	3-4	3-6	3-9-12	1	2	2	1	18
Navy	11-21-09	33	4-13	3-5	8-9	3-8-11	2	1	0	5	19
Lafayette	11-28-09	20	8-14	1-3	0-0	2-1-3	4	2	0	1	17
James Madison	12-01-09	34	1-16	0-3	7-8	4-9-13	0	6	0	1	9
Glenville St.	12-05-09	18	8-11	0-1	4-6	2-7-9	2	1	0	0	20
Auburn	12-15-09	37	7-9	2-3	3-3	0-8-8	0	3	1	0	19
Cornell	12-28-09	23	8-14	1-3	1-3	1-5-6	1	2	1	2	18
Virginia	12-29-09	25	4-13	1-6	0-0	1-5-6	0	4	2	3	9
Gardner-Webb	01-02-10	31	2-11	1-4	4-4	3-8-11	0	2	0	3	9
N.C. A&T	01-05-10	32	6-15	1-5	4-7	4-9-13	3	3	1	2	17
Winthrop	01-09-10	23	8-16	2-6	3-3	1-5-6	1	1	0	2	21
Longwood	01-12-10	30	5-17	0-4	6-6	6-7-13	3	4	2	3	16
Presbyterian	01-16-10	21	5-8	3-5	0-0	1-4-5	3	1	1	2	13
UNC Asheville	01-18-10	25	5-10	2-4	0-0	2-6-8	2	4	1	0	12
Charleston So.	01-23-10	32	4-7	1-3	2-5	2-4-6	4	4	0	3	11
Coastal Carolina	01-25-10	29	6-16	1-3	4-4	2-8-10	1	1	1	4	17
High Point	01-30-10	39	12-17	0-3	5-8	1-10-11	2	4	2	1	29
Radford	02-01-10	32	6-12	0-3	8-9	3-8-11	1	2	0	3	20
N.C. Central	02-04-10	27	4-6	2-4	0-0	2-4-6	0	1	0	0	10
Gardner-Webb	02-08-10	37	5-18	1-4	2-2	4-9-13	1	3	0	2	13
Winthrop	02-15-10	20	7-16	1-5	0-0	3-2-5	2	2	0	1	15
Coastal Carolina	02-20-10	31	6-14	0-2	2-5	3-3-6	1	2	0	5	14
Charleston So.	02-22-10	33	7-16	1-6	5-6	4-8-12	2	6	1	2	20
UNC Asheville	02-27-10	22	5-9	2-2	0-3	3-2-5	2	2	0	3	12
Presbyterian	03-01-10	24	4-8	0-1	7-9	2-3-5	0	0	0	3	15

2009-10 Notes/Highlights

-- Earned her second Big South Player of the Week award this season on Feb. 2, after posting 24.5 ppg and 11.0 rpg during Liberty's wins at High Point and Radford. Brown is one of three Big South players (also CSU's Kelsey Wasmer and GWU's Margaret Roundtree) to win the award multiple times this season.

-- Previously named Big South Player of the Week on Nov. 24, becoming the first Liberty freshman to capture the award since Megan Frazee (twice in 2005-06).

-- Ranks in the top 10 of seven different Big South statistical categories, including scoring (1st-16.5 ppg), defensive rebounds (T-1st-5.9 rpg), rebounding (3rd-8.5 rpg), field goal percentage (4th-.474), steals (5th, 2.0 spg), free throw percentage (6th-.719) and offensive rebounds (7th-2.6 rpg).

-- Her 26 points versus Winston-Salem State (Nov. 13) equaled the Lady Rams' point total and were the most points by a Lady Flame in her collegiate debut since Elena Kisseleva scored 30 points versus Bluefield on Nov. 23, 1996.

-- Outscored Navy during the second half of the Navy Classic championship game (Nov. 21), 14-11. She was named the Championship Game All-Star, after tallying 19 points, 11 rebounds and a career-high five steals.

-- Has posted nine double-doubles this season (Nov. 20 vs. Tulane, Nov. 21 at Navy, Jan. 5 vs. North Carolina A&T, Jan. 12 vs. Longwood, Jan. 25 at Coastal Carolina, Jan. 30 at High Point, Feb. 1 at Radford, Feb. 8 vs. Gardner-Webb and Feb. 22 vs. Charleston Southern).

-- Has scored in double figures in 16 consecutive games.

Career Stats

Season	GP	GS	Min	Avg	FG	FGA	Pct	3FG	3FGA	Pct	FT	FTA	Pct	ORB	DRB	TOT	Avg	Asst	TO	Blk	Stl	Pts	Avg
2009-10	27	27	762	28.2	165	348	.474	33	99	.333	82	114	.719	70	160	230	8.5	41	68	15	55	445	16.5



43

Kittery Maine

6-4 Junior Forward

Bonaire, Ga.

Warner Robins HS

Career Highs

Points - 12

vs. Saint Paul's (12-13-08)

FG Made - 5

vs. Saint Paul's (12-13-08)

FG Attempts - 8

vs. Saint Paul's (12-13-08)

3FG Made - 0

None

3FG Attempts - 0

None

FT Made - 3

vs. Charleston So. (02-18-08)

FT Attempts - 4

vs. Charleston So. (02-18-08)

Rebounds - 7

vs. Saint Paul's (12-13-08)

Assists - 1 (Six times)

Most recently, vs. Radford (02-02-09)

Steals - 1 (Five times)

Most recently, vs. Winthrop (02-16-09)

Blocks - 3 (Two times)

Most recently, at W. Carolina (11-22-08)

2009-10 Game-By-Game Statistics

OPPONENT	DATE	MIN	FG-FGA	3FG-FGA	FT-FTA	OFF-DEF-TOT	A	TO	BLK	STL	PTS
Winston-Salem St.	11-13-09										Did not play
UNC Greensboro	11-17-09										Did not play
Tulane	11-20-09										Did not play
Navy	11-21-09										Did not play
Lafayette	11-28-09										Did not play
James Madison	12-01-09										Did not play
Glenville St.	12-05-09										Did not play
Auburn	12-15-09										Did not play
Cornell	12-28-09										Did not play
Virginia	12-29-09										Did not play
Gardner-Webb	01-02-10										Did not play
N.C. A&T	01-05-10										Did not play
Winthrop	01-09-10										Did not play
Longwood	01-12-10										Did not play
Presbyterian	01-16-10										Did not play
UNC Asheville	01-18-10										Did not play
Charleston So.	01-23-10										Did not play
Coastal Carolina	01-25-10										Did not play
High Point	01-30-10										Did not play
Radford	02-01-10										Did not play
N.C. Central	02-04-10										Did not play
Gardner-Webb	02-08-10										Did not play
Winthrop	02-15-10										Did not play
Coastal Carolina	02-20-10										Did not play
Charleston So.	02-22-10										Did not play
UNC Asheville	02-27-10										Did not play
Presbyterian	03-01-10										Did not play

2009-10 Notes/Highlights

-- Has missed the first 27 games of the 2009-10 season, due to a knee injury.

Career Stats

Season	GP	GS	Min	Avg	FG	FGA	Pct	3FG	3FGA	Pct	FT	FTA	Pct	ORB	DRB	TOT	Avg	Asst	TO	Blk	Stl	Pts	Avg
2007-08	28	0	202	7.2	22	30	.733	0	0	.000	10	18	.556	13	28	41	1.5	3	18	6	3	54	1.9
2008-09	24	0	197	8.2	20	41	.488	0	0	.000	2	4	.500	17	30	47	2.0	3	12	7	2	42	1.8
TOTAL	52	0	399	7.7	42	71	.592	0	0	.000	12	22	.545	30	58	88	1.7	6	30	13	5	96	1.8



54

Carra Coy

*6-6 Freshman Forward
Summerville, S.C.
Northwood Academy*

Season/Career Highs

Points - 3 (Four times)

Most recently, at UNCA (02-27-10)

FG Made - 1 (Eight times)

Most recently, vs. Coastal (02-20-10)

FG Attempts - 4 (Two times)

at Winthrop (02-15-10)

3FG Made - 0

None

3FG Attempts - 0

None

FT Made - 3

at UNC Asheville (02-27-10)

FT Attempts - 4

at UNC Asheville (02-27-10)

Rebounds - 4 (Four times)

Most recently, at UNCA (02-27-10)

Assists - 1

vs. Coastal (02-20-10)

Steals - 1 (Two times)

Most recently, vs. NCCU (02-04-10)

Blocks - 2

vs. UNC Greensboro (11-17-09)

2009-10 Game-By-Game Statistics

OPPONENT	DATE	MIN	FG-FGA	3FG-FGA	FT-FTA	OFF-DEF-TOT	A	TO	BLK	STL	PTS
Winston-Salem St.	11-13-09	19	1-3	0-0	1-2	0-1-1	0	2	1	0	3
UNC Greensboro	11-17-09	14	1-2	0-0	0-0	1-3-4	0	0	2	0	2
Tulane	11-20-09					Did not play					
Navy	11-21-09					Did not play					
Lafayette	11-28-09	17	1-1	0-0	0-0	0-1-1	0	1	0	1	2
James Madison	12-01-09	7	0-0	0-0	0-0	1-0-1	0	1	0	0	0
Glenville St.	12-05-09	15	0-1	0-0	2-2	1-3-4	0	3	1	0	2
Auburn	12-15-09					Did not play					
Cornell	12-28-09	15	1-2	0-0	1-2	0-2-2	0	1	1	0	3
Virginia	12-29-09					Did not play					
Gardner-Webb	01-02-10	5	0-0	0-0	0-0	0-1-1	0	1	0	0	0
N.C. A&T	01-05-10	4	1-1	0-0	0-0	0-0-0	0	0	0	0	2
Winthrop	01-09-10	9	0-4	0-0	0-0	2-1-3	0	0	1	0	0
Longwood	01-12-10	5	0-0	0-0	0-1	1-0-1	0	0	0	0	0
Presbyterian	01-16-10	15	0-1	0-0	0-1	1-1-2	0	1	1	0	0
UNC Asheville	01-18-10	10	1-1	0-0	0-0	1-0-1	0	1	1	0	2
Charleston So.	01-23-10	4	0-0	0-0	0-0	0-1-1	0	1	0	0	0
Coastal Carolina	01-25-10					Did not play					
High Point	01-30-10	1	0-0	0-0	0-0	0-0-0	0	0	0	0	0
Radford	02-01-10	6	0-0	0-0	0-2	1-0-1	0	0	0	0	0
N.C. Central	02-04-10	6	0-1	0-0	0-0	0-0-0	0	0	0	1	0
Gardner-Webb	02-08-10					Did not play					
Winthrop	02-15-10	14	1-4	0-0	0-0	3-1-4	0	0	0	0	2
Coastal Carolina	02-20-10	8	1-1	0-0	1-2	3-0-3	1	1	0	0	3
Charleston So.	02-22-10	2	0-0	0-0	0-0	0-0-0	0	0	0	0	0
UNC Asheville	02-27-10	17	0-2	0-0	3-4	3-1-4	0	0	0	0	3
Presbyterian	03-01-10	6	0-1	0-0	1-2	1-1-2	0	0	0	0	1

2009-10 Notes/Highlights

Career Stats

Season	GP	GS	Min	Avg	FG	FGA	Pct	3FG	3FGA	Pct	FT	FTA	Pct	ORB	DRB	TOT	Avg	Asst	TO	Blk	Stl	Pts	Avg
2009-10	21	0	199	9.5	8	25	.320	0	0	.000	9	18	.500	19	17	36	1.7	1	13	8	2	25	1.2

Official Basketball Box Score -- Game Totals -- Final Statistics

Liberty vs Presbyterian College

03-01-10 7:00 p.m. at Templeton Center (Clinton, S.C.)

VISITORS: Liberty 22-5, 12-2 BSC

##	Player Name	TOT-FG		3-PT	REBOUNDS			PF	TP	A	TO	BLK	S	MIN
		FG	FGA	FG	FT	FTA	OF							
15	BEECHER, Kylee.....	f	1-2	0-0	0-0	2	1	3	3	2	0	2	0	18
23	WARLEY, Avery.....	f	3-3	0-0	7-7	5	6	11	1	13	0	5	1	26
21	MAYS, Amber.....	g	2-4	0-0	1-1	0	1	1	1	5	1	3	0	25
32	McLEOD, Rachel.....	g	1-6	1-1	0-0	2	1	3	1	3	0	2	0	26
40	BROWN, Devon.....	g	4-8	0-1	7-9	2	3	5	2	15	0	0	0	24
01	WASHINGTON, LaKendra		1-2	0-1	0-1	1	1	2	2	2	0	5	0	23
11	ANTIC, Jelena.....		2-5	0-2	2-2	2	1	3	4	6	3	1	0	20
12	DALE, Danika.....		1-6	0-0	0-0	1	2	3	2	2	0	0	0	17
25	MORGAN, Dymond.....		1-5	0-0	4-4	0	0	0	2	6	0	2	0	15
54	COY, Carra.....		0-1	0-0	1-2	1	1	2	2	1	0	0	0	6
	TEAM.....							3						
	Totals.....		16-42	1-5	22-26	16	20	36	20	55	4	21	1	16

TOTAL FG% 1st Half: 10-27 37.0% 2nd Half: 6-15 40.0% Game: 38.1% DEADB
 3-Pt. FG% 1st Half: 0-2 0.0% 2nd Half: 1-3 33.3% Game: 20.0% REBS
 F Throw % 1st Half: 13-13 100 % 2nd Half: 9-13 69.2% Game: 84.6% 1

HOME TEAM: Presbyterian College 5-23, 3-11 BSC

##	Player Name	TOT-FG		3-PT	REBOUNDS			PF	TP	A	TO	BLK	S	MIN
		FG	FGA	FG	FT	FTA	OF							
23	SMITH, Lea.....	f	3-3	0-0	0-0	0	2	2	3	6	0	2	1	18
51	PIETROWSKI, Mariah..	c	2-4	0-0	3-5	1	2	3	3	7	0	0	0	23
05	DAVID, Dria.....	g	2-4	1-1	1-3	1	2	3	4	6	1	7	1	30
20	FOTHERGILL, Devin... g		1-3	0-1	0-0	0	0	0	1	2	0	4	0	24
24	STEVENS, Kristen... g		0-3	0-2	0-0	0	0	0	0	0	2	4	0	23
11	PARKER, Chelsea.....		1-2	0-1	2-2	1	0	1	1	4	1	0	0	20
12	MILLS, Amanda.....		2-5	1-4	3-4	0	1	1	2	8	1	3	0	23
14	BROWN, Brittany.....		0-1	0-0	0-0	0	0	0	0	0	0	0	0	3
21	WRIGHT, Chelsea.....		0-2	0-0	0-0	0	1	1	3	0	0	0	0	18
22	BURNSIDE, Shonda....		3-6	0-0	1-2	1	3	4	4	7	1	0	1	18
	TEAM.....							2						
	Totals.....		14-33	2-9	10-16	4	13	17	21	40	6	22	3	10

TOTAL FG% 1st Half: 6-16 37.5% 2nd Half: 8-17 47.1% Game: 42.4% DEADB
 3-Pt. FG% 1st Half: 1-5 20.0% 2nd Half: 1-4 25.0% Game: 22.2% REBS
 F Throw % 1st Half: 3-6 50.0% 2nd Half: 7-10 70.0% Game: 62.5% 1

Officials: Billy Smith, Mark Hardcastle, Kim Thebo
 Technical fouls: Liberty-None. Presbyterian College-None.
 Attendance: 336

Score by Periods	1st	2nd	Total
Liberty.....	33	22	55
Presbyterian College.....	16	24	40

Points in the paint-LIBERTY 30,PC 8. Points off turnovers-LIBERTY 17,PC 19.
 2nd chance points-LIBERTY 15,PC 4. Fast break points-LIBERTY 6,PC 2.
 Bench points-LIBERTY 17,PC 19. Score tied-0 times. Lead changed-0 times.
 Last FG-LIBERTY 2nd-01:44, PC 2nd-00:37.
 Largest lead-LIBERTY by 21 2nd-09:44, PC None.

Official Basketball Box Score -- Game Totals -- Final Statistics

Liberty vs Radford

02-01-10 7:00 pm at Dedmon Center (Radford, Va.)

VISITORS: Liberty 16-4, 7-1 BSC

##	Player Name	FG-FGA	3-PT FG-FGA	FT-FTA	REBOUNDS			PF	TP	A	TO	BLK	S	MIN
					OF	DE	TOT							
15	BEECHER, Kylee.....	f 5-8	0-0	3-4	3	6	9	2	13	0	4	0	3	38
23	WARLEY, Avery.....	f 2-4	0-0	0-0	1	4	5	4	4	0	1	2	1	24
40	BROWN, Devon.....	f 6-12	0-3	8-9	3	8	11	1	20	1	2	0	3	32
21	MAYS, Amber.....	g 4-6	0-0	2-4	1	0	1	3	10	7	5	0	3	24
32	McLEOD, Rachel.....	g 2-4	0-0	5-6	0	1	1	1	9	2	1	0	1	21
01	WASHINGTON, LaKendra	0-0	0-0	0-0	0	0	0	1	0	1	3	0	0	18
12	DALE, Danika.....	1-2	0-0	0-0	0	1	1	0	2	0	1	2	1	20
25	MORGAN, Dymond.....	1-5	0-0	3-4	1	2	3	2	5	1	3	0	3	17
54	COY, Carra.....	0-0	0-0	0-2	1	0	1	1	0	0	0	0	0	6
	TEAM.....				3	1	4				4			
	Totals.....	21-41	0-3	21-29	13	23	36	15	63	12	24	4	15	200

TOTAL FG% 1st Half: 12-21 57.1% 2nd Half: 9-20 45.0% Game: 51.2% DEADB
 3-Pt. FG% 1st Half: 0-0 0.0% 2nd Half: 0-3 0.0% Game: 0.0% REBS
 F Throw % 1st Half: 6-7 85.7% 2nd Half: 15-22 68.2% Game: 72.4% 5

HOME TEAM: Radford 5-14, 4-4 BSC

##	Player Name	FG-FGA	3-PT FG-FGA	FT-FTA	REBOUNDS			PF	TP	A	TO	BLK	S	MIN
					OF	DE	TOT							
23	ALSTON, Kymesha.....	f 2-8	0-0	3-6	1	1	2	4	7	0	1	0	0	25
32	VICK, Kahealani.....	f 0-1	0-0	1-2	2	1	3	4	1	0	1	1	2	18
11	WOOD, Denay.....	g 3-10	1-5	0-0	3	2	5	4	7	1	3	0	1	32
14	HAMILTON, Victoria..	g 1-4	0-0	1-1	2	0	2	1	3	1	6	0	2	23
22	ERWINSPENCER, Da'Nar	g 2-8	0-0	6-6	0	1	1	0	10	3	9	1	0	27
15	BUCKHANNON, Ashley..	4-11	1-6	0-0	2	0	2	2	9	2	0	0	2	28
21	TABB, Sarah.....	0-0	0-0	0-0	0	0	0	0	0	0	0	0	0	2
25	KINLAW, Jewell.....	1-3	0-0	1-2	3	2	5	2	3	1	1	0	0	15
30	BROCKETT, Katherine..	1-1	1-1	0-0	0	0	0	1	3	0	1	0	0	3
31	CROSIER, Kaylyn.....	1-2	0-0	0-0	0	0	0	2	2	0	0	0	0	9
42	RESKOSKA, Ema.....	0-3	0-0	0-0	1	1	2	1	0	0	1	1	0	18
	TEAM.....				2	2	4							
	Totals.....	15-51	3-12	12-17	16	10	26	21	45	8	23	3	7	200

TOTAL FG% 1st Half: 6-24 25.0% 2nd Half: 9-27 33.3% Game: 29.4% DEADB
 3-Pt. FG% 1st Half: 1-5 20.0% 2nd Half: 2-7 28.6% Game: 25.0% REBS
 F Throw % 1st Half: 2-6 33.3% 2nd Half: 10-11 90.9% Game: 70.6% 2

Officials: Jen Rezak, Dan Outlaw, Margo Riddle

Technical fouls: Liberty-None. Radford-None.

Attendance: 384

Score by Periods	1st	2nd	Total
Liberty.....	30	33	- 63
Radford.....	15	30	- 45

Points in the paint-LIBERTY 36,RADFORD 12. Points off turnovers-LIBERTY 27,RADFORD 13.

2nd chance points-LIBERTY 10,RADFORD 14. Fast break points-LIBERTY 10,RADFORD 4.

Bench points-LIBERTY 7,RADFORD 17. Score tied-2 times. Lead changed-1 time.

Last FG-LIBERTY 2nd-00:39, RADFORD 2nd-01:20.

Largest lead-LIBERTY by 18 2nd-07:09, RADFORD by 2 1st-19:08.

2009-10 Liberty Women's Basketball
 Liberty Game-by-Game Highs (as of Mar 03, 2010)
 All games

Opponent	Date	Score	WL	POINTS	REBOUNDS	ASSISTS	STEALS	BLOCKED SHOTS
WINSTON-SALEM STATE	11-13-09	71-26	W	26-BROWN, Devon	9-WARLEY, Avery	6-MAYS, Amber	5-WASHINGTON, L	2-DALE, Danika
UNC GREENSBORO	11-17-09	60-42	W	26-BROWN, Devon	9-BROWN, Devon	4-MAYS, Amber	4-MAYS, Amber	2-COY, Carra DALE, Danika
vs Tulane	11-20-09	63-52	W	18-BROWN, Devon	12-BROWN, Devon	3-MAYS, Amber	4-MAYS, Amber	2-BROWN, Devon
at Navy	11-21-09	55-43	W	19-BROWN, Devon	11-BROWN, Devon	5-MAYS, Amber	5-BROWN, Devon	None
at Lafayette	11-28-09	90-55	W	21-WASHINGTON, L	11-WARLEY, Avery	4-BROWN, Devon MAYS, Amber	4-WASHINGTON, L MAYS, Amber	1-BEECHER, Kyle
JAMES MADISON	12-01-09	50-60	L	14-MAYS, Amber	13-BROWN, Devon	2-MAYS, Amber WARLEY, Avery	2-BEECHER, Kyle	2-DALE, Danika
GLENVILLE STATE	12-05-09	86-45	W	20-BROWN, Devon	10-ANTIC, Jelena	7-MCLEOD, Rache MORGAN, Dymon	3-DALE, Danika	1-WARLEY, Avery COY, Carra
at Auburn	12-15-09	64-70	L	19-BROWN, Devon	8-BROWN, Devon	3-MAYS, Amber	4-MAYS, Amber	1-BROWN, Devon
vs Cornell	12-28-09	70-40	W	18-BROWN, Devon	8-ANTIC, Jelena	8-MAYS, Amber	4-MAYS, Amber	1-COY, Carra WARLEY, Avery BROWN, Devon WASHINGTON, L
at Virginia	12-29-09	54-63	L	12-WARLEY, Avery	8-WARLEY, Avery	3-ANTIC, Jelena MAYS, Amber	3-BROWN, Devon MAYS, Amber	2-BROWN, Devon
at Gardner-Webb	01-02-10	65-70	L	10-DALE, Danika ANTIC, Jelena MAYS, Amber WARLEY, Avery	11-BROWN, Devon	6-MAYS, Amber	3-BROWN, Devon WARLEY, Avery	1-WARLEY, Avery
NORTH CAROLINA A&T	01-05-10	57-51	W	17-BROWN, Devon	13-BROWN, Devon	4-ANTIC, Jelena	3-MORGAN, Dymon	1-BEECHER, Kyle BROWN, Devon ANTIC, Jelena
WINTHROP	01-09-10	67-38	W	21-BROWN, Devon	6-BROWN, Devon ANTIC, Jelena	10-MAYS, Amber	3-WASHINGTON, L	1-WARLEY, Avery BEECHER, Kyle COY, Carra
LONGWOOD	01-12-10	78-55	W	19-ANTIC, Jelena	13-BROWN, Devon	4-MCLEOD, Rache	5-MAYS, Amber	2-BROWN, Devon
PRESBYTERIAN COLLEGE	01-16-10	73-27	W	14-ANTIC, Jelena	5-BROWN, Devon DALE, Danika	6-MAYS, Amber	5-MORGAN, Dymon	1-BROWN, Devon COY, Carra
UNC ASHEVILLE	01-18-10	82-40	W	14-BEECHER, Kyle MAYS, Amber	10-WARLEY, Avery	6-MORGAN, Dymon	4-WASHINGTON, L McLEOD, Rache MORGAN, Dymon	3-WARLEY, Avery
at Charleston Southern	01-23-10	65-52	W	18-WARLEY, Avery	16-WARLEY, Avery	4-BROWN, Devon	3-BROWN, Devon	1-MAYS, Amber
at Coastal Carolina	01-25-10	57-38	W	17-BROWN, Devon	12-WARLEY, Avery	2-MCLEOD, Rache MAYS, Amber DALE, Danika	4-BROWN, Devon	1-WARLEY, Avery BROWN, Devon DALE, Danika
at High Point	01-30-10	75-62	W	29-BROWN, Devon	14-WARLEY, Avery	2-MAYS, Amber BEECHER, Kyle McLEOD, Rache BROWN, Devon	3-MORGAN, Dymon	2-BROWN, Devon
at Radford	02-01-10	63-45	W	20-BROWN, Devon	11-BROWN, Devon	7-MAYS, Amber	3-BROWN, Devon MAYS, Amber BEECHER, Kyle MORGAN, Dymon	2-WARLEY, Avery DALE, Danika
N.C. CENTRAL	02-04-10	64-44	W	16-WARLEY, Avery	11-WARLEY, Avery	8-MAYS, Amber	3-WASHINGTON, L	1-WASHINGTON, L WARLEY, Avery DALE, Danika
GARDNER-WEBB	02-08-10	56-59	L	15-WARLEY, Avery	13-BROWN, Devon	3-MAYS, Amber McLEOD, Rache	2-MCLEOD, Rache BROWN, Devon MAYS, Amber	2-WARLEY, Avery
at Winthrop	02-15-10	52-18	W	15-BROWN, Devon	8-WARLEY, Avery	2-BROWN, Devon	3-WASHINGTON, L	3-WARLEY, Avery

2009-10 Liberty Women's Basketball
 Liberty Game-by-Game Highs (as of Mar 03, 2010)
 All games

Opponent	Date	Score	WL	POINTS	REBOUNDS	ASSISTS	STEALS	BLOCKED SHOTS

							McLEOD, Rache	
COASTAL CAROLINA	02-20-10	57-55	W	14-BROWN, Devon	8-WARLEY, Avery	3-McLEOD, Rache	5-BROWN, Devon	1-WARLEY, Avery
CHARLESTON SOUTHERN	02-22-10	66-56	W	22-WARLEY, Avery	12-BROWN, Devon	3-ANTIC, Jelena	3-WARLEY, Avery	1-BROWN, Devon
							MORGAN, Dymon	
at UNC Asheville	02-27-10	94-66	W	22-WARLEY, Avery	10-WARLEY, Avery	5-MORGAN, Dymon	3-WASHINGTON, L	None
							MAYS, Amber	
							BROWN, Devon	
at Presbyterian College	03-01-10	55-40	W	15-BROWN, Devon	11-WARLEY, Avery	3-ANTIC, Jelena	3-MORGAN, Dymon	1-WARLEY, Avery
							BROWN, Devon	
							MAYS, Amber	
							ANTIC, Jelena	

2009-10 Liberty Women's Basketball
 Liberty Game-by-Game Points-Rebounds-Assists (as of Mar 03, 2010)
 All games

Opponent	Date	Score	WL	01 WASHINGTON	11 ANTIC,JEL	12 DALE,DANI	15 BEECHER,K	21 MAYS,AMBE	23 WARLEY,AV	25 MORGAN,DY	32 MCLEOD,RA	40 BROWN,DEV
WINSTON-SALEM STATE	11-13-09	71-26	W	9- 2- 1	DNP	6- 7- 3	8- 2- 2	7- 0- 6	4- 9- 2	0- 4- 1	8- 1- 2	26- 7- 1
UNC GREENSBORO	11-17-09	60-42	W	2- 0- 0	DNP	0- 4- 0	11- 5- 0	11- 1- 4	0- 7- 0	6- 5- 2	2- 1- 2	26- 9- 2
vs Tulane	11-20-09	63-52	W	2- 1- 0	DNP	0- 1- 1	6- 3- 2	10- 2- 3	9-11- 1	9- 2- 0	9- 2- 2	18-12- 1
at Navy	11-21-09	55-43	W	6- 4- 0	0- 5- 3	0- 2- 1	4- 2- 0	8- 2- 5	10- 6- 0	2- 3- 0	6- 2- 0	19-11- 2
at Lafayette	11-28-09	90-55	W	21- 0- 2	4- 4- 2	6- 4- 1	5- 3- 2	11- 4- 4	19-11- 0	1- 0- 0	4- 1- 0	17- 3- 4
JAMES MADISON	12-01-09	50-60	L	2- 1- 0	1- 4- 0	3- 5- 1	4- 6- 1	14- 2- 2	9- 7- 2	0- 0- 0	8- 1- 0	9-13- 0
GLENVILLE STATE	12-05-09	86-45	W	8- 5- 2	12-10- 0	6- 9- 3	14- 6- 0	5- 2- 4	7- 6- 0	6- 7- 7	6- 2- 7	20- 9- 2
at Auburn	12-15-09	64-70	L	2- 1- 0	4- 3- 1	0- 0- 0	7- 0- 1	18- 1- 3	10- 6- 0	2- 2- 0	2- 1- 1	19- 8- 0
vs Cornell	12-28-09	70-40	W	9- 5- 2	11- 8- 2	5- 7- 2	5- 3- 0	4- 2- 8	10- 7- 0	2- 1- 1	3- 0- 0	18- 6- 1
at Virginia	12-29-09	54-63	L	5- 5- 1	5- 3- 3	3- 4- 0	6- 2- 0	7- 0- 3	12- 8- 0	2- 1- 0	5- 2- 0	9- 6- 0
at Gardner-Webb	01-02-10	65-70	L	0- 0- 0	10- 5- 1	10- 0- 1	4- 3- 0	10- 5- 6	10- 6- 0	6- 1- 1	6- 8- 2	9-11- 0
NORTH CAROLINA A&T	01-05-10	57-51	W	0- 2- 0	14- 4- 4	2- 2- 1	0- 3- 0	4- 2- 3	9-11- 0	5- 0- 1	4- 2- 1	17-13- 3
WINTHROP	01-09-10	67-38	W	5- 1- 1	9- 6- 1	4- 5- 3	5- 2- 2	3- 0-10	5- 5- 1	11- 1- 1	4- 3- 2	21- 6- 1
LONGWOOD	01-12-10	78-55	W	1- 2- 1	19-10- 2	2- 4- 1	10- 6- 1	7- 0- 3	12- 5- 1	6- 3- 3	5- 2- 4	16-13- 3
PRESBYTERIAN COLLEGE	01-16-10	73-27	W	6- 3- 0	14- 3- 1	5- 5- 1	5- 3- 1	8- 2- 6	6- 2- 0	5- 0- 4	11- 3- 1	13- 5- 3
UNC ASHEVILLE	01-18-10	82-40	W	6- 1- 0	7- 4- 0	5- 3- 1	14- 5- 2	14- 1- 5	6-10- 2	6- 2- 6	10- 5- 3	12- 8- 2
at Charleston Southern	01-23-10	65-52	W	4- 1- 0	DNP	3- 4- 2	10- 9- 0	14- 0- 3	18-16- 0	2- 1- 0	3- 2- 1	11- 6- 4
at Coastal Carolina	01-25-10	57-38	W	7- 1- 0	DNP	0- 4- 2	6- 9- 1	8- 2- 2	15-12- 0	2- 0- 1	2- 3- 2	17-10- 1
at High Point	01-30-10	75-62	W	0- 0- 0	DNP	2- 2- 0	3- 4- 2	7- 5- 2	26-14- 0	6- 0- 1	2- 1- 2	29-11- 2
at Radford	02-01-10	63-45	W	0- 0- 1	DNP	2- 1- 0	13- 9- 0	10- 1- 7	4- 5- 0	5- 3- 1	9- 1- 2	20-11- 1
N.C. CENTRAL	02-04-10	64-44	W	6- 2- 2	DNP	15- 3- 2	3- 2- 4	8- 2- 8	16-11- 0	0- 1- 1	6- 4- 1	10- 6- 0
GARDNER-WEBB	02-08-10	56-59	L	0- 0- 1	DNP	6- 0- 0	4- 4- 2	6- 1- 3	15-10- 0	3- 0- 1	9- 2- 3	13-13- 1
at Winthrop	02-15-10	52-18	W	2- 2- 1	DNP	11- 5- 0	9- 5- 1	1- 1- 1	4- 8- 1	5- 1- 1	3- 4- 1	15- 5- 2
COASTAL CAROLINA	02-20-10	57-55	W	4- 1- 0	2- 3- 1	5- 0- 0	9- 1- 0	12- 3- 2	5- 8- 1	3- 1- 1	0- 2- 3	14- 6- 1
CHARLESTON SOUTHERN	02-22-10	66-56	W	0- 1- 0	4- 6- 3	1- 0- 0	4- 2- 1	6- 0- 0	22-10- 1	5- 1- 2	4- 2- 1	20-12- 2
at UNC Asheville	02-27-10	94-66	W	12- 0- 4	13- 5- 2	10- 4- 3	12- 9- 0	6- 2- 2	22-10- 0	2- 0- 5	2- 1- 4	12- 5- 2
at Presbyterian College	03-01-10	55-40	W	2- 2- 0	6- 3- 3	2- 3- 0	2- 3- 0	5- 1- 1	13-11- 0	6- 0- 0	3- 3- 0	15- 5- 0

Opponent	Date	Score	WL	54 COY,CARRA
WINSTON-SALEM STATE	11-13-09	71-26	W	3- 1- 0
UNC GREENSBORO	11-17-09	60-42	W	2- 4- 0
vs Tulane	11-20-09	63-52	W	DNP
at Navy	11-21-09	55-43	W	DNP
at Lafayette	11-28-09	90-55	W	2- 1- 0
JAMES MADISON	12-01-09	50-60	L	0- 1- 0
GLENVILLE STATE	12-05-09	86-45	W	2- 4- 0
at Auburn	12-15-09	64-70	L	DNP
vs Cornell	12-28-09	70-40	W	3- 2- 0
at Virginia	12-29-09	54-63	L	DNP
at Gardner-Webb	01-02-10	65-70	L	0- 1- 0
NORTH CAROLINA A&T	01-05-10	57-51	W	2- 0- 0
WINTHROP	01-09-10	67-38	W	0- 3- 0
LONGWOOD	01-12-10	78-55	W	0- 1- 0
PRESBYTERIAN COLLEGE	01-16-10	73-27	W	0- 2- 0
UNC ASHEVILLE	01-18-10	82-40	W	2- 1- 0
at Charleston Southern	01-23-10	65-52	W	0- 1- 0
at Coastal Carolina	01-25-10	57-38	W	DNP
at High Point	01-30-10	75-62	W	0- 0- 0
at Radford	02-01-10	63-45	W	0- 1- 0
N.C. CENTRAL	02-04-10	64-44	W	0- 0- 0
GARDNER-WEBB	02-08-10	56-59	L	DNP
at Winthrop	02-15-10	52-18	W	2- 4- 0
COASTAL CAROLINA	02-20-10	57-55	W	3- 3- 1
CHARLESTON SOUTHERN	02-22-10	66-56	W	0- 0- 0
at UNC Asheville	02-27-10	94-66	W	3- 4- 0
at Presbyterian College	03-01-10	55-40	W	1- 2- 0

2009-10 Liberty Women's Basketball
 Liberty Player High/Low Analysis (as of Mar 03, 2010)
 All games

Liberty - INDIVIDUAL GAME HIGHS

Points.....	29	BROWN, Devon at High Point (01-30-10)
	26	WARLEY, Avery at High Point (01-30-10)
	26	BROWN, Devon vs UNC Greensboro (11-17-09)
	26	BROWN, Devon vs Winston-Salem State (11-13-09)
	22	WARLEY, Avery at UNC Asheville (02-27-10)
	22	WARLEY, Avery vs Charleston Southern (02-22-10)
Field Goals Made.....	12	BROWN, Devon at High Point (01-30-10)
	11	BROWN, Devon vs UNC Greensboro (11-17-09)
	11	BROWN, Devon vs Winston-Salem State (11-13-09)
Field Goal Att.....	18	BROWN, Devon vs Gardner-Webb (02-08-10)
	17	BROWN, Devon at High Point (01-30-10)
	17	BROWN, Devon vs Longwood (01-12-10)
FG Pct (min 5 made).....	1.000 (9-9)	WARLEY, Avery vs Charleston Southern (02-22-10)
	1.000 (7-7)	ANTIC, Jelena vs Presbyterian College (01-16-10)
3-Point FG Made.....	3	BROWN, Devon vs Presbyterian College (01-16-10)
	3	BROWN, Devon at Navy (11-21-09)
	3	BROWN, Devon vs Tulane (11-20-09)
	3	BROWN, Devon vs Winston-Salem State (11-13-09)
3-Point FG Att.....	6	BROWN, Devon vs Charleston Southern (02-22-10)
	6	BROWN, Devon vs Winthrop (01-09-10)
	6	BROWN, Devon at Virginia (12-29-09)
	6	WASHINGTON, LaKendra vs Winston-Salem State (11-13-09)
3-Pt FG Pct (min 2 made).....	1.000 (2-2)	BROWN, Devon at UNC Asheville (02-27-10)
	1.000 (2-2)	WASHINGTON, LaKendra at Coastal Carolina (01-25-10)
	1.000 (2-2)	MAYS, Amber vs UNC Asheville (01-18-10)
	1.000 (2-2)	ANTIC, Jelena at Gardner-Webb (01-02-10)
Free Throws Made.....	8	BROWN, Devon at Radford (02-01-10)
	8	WARLEY, Avery at High Point (01-30-10)
	8	BEECHER, Kylee vs UNC Asheville (01-18-10)
	8	BROWN, Devon at Navy (11-21-09)
Free Throw Att.....	11	WARLEY, Avery at High Point (01-30-10)
	10	BEECHER, Kylee vs UNC Asheville (01-18-10)
FT Pct (min 3 made).....	1.000 (7-7)	WARLEY, Avery at Presbyterian College (03-01-10)
	1.000 (6-6)	BROWN, Devon vs Longwood (01-12-10)
	1.000 (4-4)	MORGAN, Dymond at Presbyterian College (03-01-10)
	1.000 (4-4)	BEECHER, Kylee vs Charleston Southern (02-22-10)
	1.000 (4-4)	BROWN, Devon at Coastal Carolina (01-25-10)
	1.000 (4-4)	BROWN, Devon at Gardner-Webb (01-02-10)
	1.000 (4-4)	BEECHER, Kylee vs Winston-Salem State (11-13-09)
	1.000 (4-4)	DALE, Danika vs Winston-Salem State (11-13-09)
	1.000 (3-3)	DALE, Danika at Winthrop (02-15-10)
	1.000 (3-3)	BROWN, Devon vs Winthrop (01-09-10)
	1.000 (3-3)	BROWN, Devon at Auburn (12-15-09)
	1.000 (3-3)	WARLEY, Avery at Lafayette (11-28-09)
Rebounds.....	16	WARLEY, Avery at Charleston Southern (01-23-10)
	14	WARLEY, Avery at High Point (01-30-10)
Assists.....	10	MAYS, Amber vs Winthrop (01-09-10)
	8	MAYS, Amber vs N.C. Central (02-04-10)
	8	MAYS, Amber vs Cornell (12-28-09)
Steals.....	5	BROWN, Devon vs Coastal Carolina (02-20-10)
	5	MORGAN, Dymond vs Presbyterian College (01-16-10)
	5	MAYS, Amber vs Longwood (01-12-10)
	5	BROWN, Devon at Navy (11-21-09)

	5	WASHINGTON, LaKendra vs Winston-Salem State (11-13-09)
Blocked Shots.....	3	WARLEY, Avery at Winthrop (02-15-10)
	3	WARLEY, Avery vs UNC Asheville (01-18-10)
Turnovers.....	8	MORGAN, Dymond vs Glenville State (12-05-09)
	7	MAYS, Amber at Virginia (12-29-09)
Fouls.....	5	WARLEY, Avery vs Gardner-Webb (02-08-10)
	5	MAYS, Amber at High Point (01-30-10)
	5	WARLEY, Avery vs Longwood (01-12-10)
	5	WARLEY, Avery at Gardner-Webb (01-02-10)
	5	ANTIC, Jelena at Gardner-Webb (01-02-10)
	5	MAYS, Amber at Virginia (12-29-09)
	5	WARLEY, Avery vs James Madison (12-01-09)
	5	WASHINGTON, LaKendra vs UNC Greensboro (11-17-09)

2009-10 Liberty Women's Basketball
 Liberty High/Low Analysis (as of Mar 03, 2010)
 All games

OPPONENT INDIVIDUAL GAME HIGHS

Points.....	22	Jackson, Lauren at Lafayette (11-28-09)
	20	MOSS, Sydnei at Coastal Carolina (01-25-10)
	19	WASMER, Kelsey vs Charleston Southern (02-22-10)
	19	MOSS, Sydnei vs Coastal Carolina (02-20-10)
	19	STULL, Amanda vs Coastal Carolina (02-20-10)
	19	Wright, Monica at Virginia (12-29-09)
Field Goals Made.....	7	MOSS, Sydnei vs Coastal Carolina (02-20-10)
	7	Wright, Monica at Virginia (12-29-09)
Field Goal Att.....	20	MILLER, Joanna vs N.C. Central (02-04-10)
	17	MOSS, Sydnei at Coastal Carolina (01-25-10)
FG Pct (min 5 made).....	.833 (5-6)	BROWN, Shamia at High Point (01-30-10)
	.833 (5-6)	SAMS,Jaleesa vs North Carolina A&T (01-05-10)
	.833 (5-6)	McCall, Telia at Virginia (12-29-09)
3-Point FG Made.....	5	STULL, Amanda vs Coastal Carolina (02-20-10)
	4	TERRY, Helen vs Charleston Southern (02-22-10)
	4	WASMER, Kelsey vs Charleston Southern (02-22-10)
	4	MOSS, Sydnei at Coastal Carolina (01-25-10)
	4	Smalley, Alli at Auburn (12-15-09)
	4	KALJO, Indira vs Tulane (11-20-09)
3-Point FG Att.....	12	KALJO, Indira vs Tulane (11-20-09)
	11	Autumn Davis vs Glenville State (12-05-09)
3-Pt FG Pct (min 2 made).....	1.000 (3-3)	HUDSON, Dominique vs Gardner-Webb (02-08-10)
	1.000 (2-2)	BLANKS, Shanise vs N.C. Central (02-04-10)
Free Throws Made.....	7	HUDSON, Monique at Gardner-Webb (01-02-10)
	7	Greenleaf, Jordan at Auburn (12-15-09)
	7	Hislop, Tarik vs James Madison (12-01-09)
	7	Jackson, Lauren at Lafayette (11-28-09)
Free Throw Att.....	9	Hislop, Tarik vs James Madison (12-01-09)
	8	FIELDS, Frances at High Point (01-30-10)
	8	TERRY, Helen at Charleston Southern (01-23-10)
	8	MONTGOMERY, Lindsey vs UNC Asheville (01-18-10)
	8	HUDSON, Monique at Gardner-Webb (01-02-10)
	8	Greenleaf, Jordan at Auburn (12-15-09)
	8	Jackson, Lauren at Lafayette (11-28-09)
FT Pct (min 3 made).....	1.000 (6-6)	ERWINSPENCER, Da'Nar at Radford (02-01-10)
	1.000 (4-4)	MONTGOMERY, Lindsey at UNC Asheville (02-27-10)
	1.000 (4-4)	STULL, Amanda vs Coastal Carolina (02-20-10)
	1.000 (4-4)	MOSS, Sydnei at Coastal Carolina (01-25-10)
	1.000 (4-4)	SCHWAGMEYER, Ali at Charleston Southern (01-23-10)
	1.000 (4-4)	HUDSON, Dominique at Gardner-Webb (01-02-10)
	1.000 (3-3)	RYSKA, Kathi at Winthrop (02-15-10)
Rebounds.....	10	MONTGOMERY, Lindsey at UNC Asheville (02-27-10)
	9	Consedine, Cassie at Navy (11-21-09)
Assists.....	9	HUDSON, Dominique at Gardner-Webb (01-02-10)
	8	SHEPARD, Kendall at UNC Asheville (02-27-10)
Steals.....	10	Wright, Monica at Virginia (12-29-09)
	5	SHEPARD, Kendall vs UNC Asheville (01-18-10)
	5	Kellum, Paulisha at Virginia (12-29-09)
Blocked Shots.....	4	MONTGOMERY, Lindsey at UNC Asheville (02-27-10)
	3	WHITE, Katie at Coastal Carolina (01-25-10)
	3	POPE, LaTroya at Gardner-Webb (01-02-10)
Turnovers.....	9	MILLER, Joanna vs N.C. Central (02-04-10)
	9	ERWINSPENCER, Da'Nar at Radford (02-01-10)
	9	Becky Fernandes vs Longwood (01-12-10)
	9	Benson, Lauren vs Cornell (12-28-09)

Fouls.....	5	MONTGOMERY, Lindsey at UNC Asheville (02-27-10)
	5	RILES, Kelli at UNC Asheville (02-27-10)
	5	WASMER, Kelsey vs Charleston Southern (02-22-10)
	5	WHITE, Chanel at Winthrop (02-15-10)
	5	RILES, Kelli vs UNC Asheville (01-18-10)
	5	Morgan Smith vs Longwood (01-12-10)
	5	HUDSON, Dominique at Gardner-Webb (01-02-10)
	5	POPE, LaTroya at Gardner-Webb (01-02-10)
	5	Myers, Angela at Navy (11-21-09)
	5	BROWN, Chassity vs Tulane (11-20-09)
	5	RECTOR, Rene vs Winston-Salem State (11-13-09)

2009-10 Liberty Women's Basketball
 Liberty Team High/Low Analysis (as of Mar 03, 2010)
 All games

Liberty - TEAM GAME HIGHS

POINTS.....	94	at UNC Asheville (02-27-10)
	90	at Lafayette (11-28-09)
	86	GLENVILLE STATE (12-05-09)
	82	UNC ASHEVILLE (01-18-10)
	78	LONGWOOD (01-12-10)
FIELD GOALS MADE.....	37	at Lafayette (11-28-09)
	35	GLENVILLE STATE (12-05-09)
FIELD GOAL ATTEMPTS.....	71	at UNC Asheville (02-27-10)
	63	UNC ASHEVILLE (01-18-10)
FIELD GOAL PERCENTAGE.....	.644 (29-45)	PRESBYTERIAN COLLEGE (01-16-10)
	.617 (37-60)	at Lafayette (11-28-09)
3 PT FIELD GOALS MADE.....	9	UNC ASHEVILLE (01-18-10)
	6	at UNC Asheville (02-27-10)
3 PT FG ATTEMPTS.....	17	UNC ASHEVILLE (01-18-10)
	14	WINSTON-SALEM STATE (11-13-09)
3 PT FG PERCENTAGE.....	.667 (4-6)	vs Tulane (11-20-09)
	.545 (6-11)	at UNC Asheville (02-27-10)
FREE THROWS MADE.....	26	at High Point (01-30-10)
	22	at Presbyterian College (03-01-10)
	22	at UNC Asheville (02-27-10)
FREE THROW ATTEMPTS.....	40	at UNC Asheville (02-27-10)
	35	at High Point (01-30-10)
FREE THROW PERCENTAGE.....	.923 (12-13)	at Auburn (12-15-09)
	.846 (22-26)	at Presbyterian College (03-01-10)
REBOUNDS.....	67	GLENVILLE STATE (12-05-09)
	54	LONGWOOD (01-12-10)
ASSISTS.....	25	GLENVILLE STATE (12-05-09)
	22	at UNC Asheville (02-27-10)
	22	WINTHROP (01-09-10)
STEALS.....	19	PRESBYTERIAN COLLEGE (01-16-10)
	18	UNC ASHEVILLE (01-18-10)
BLOCKED SHOTS.....	6	UNC ASHEVILLE (01-18-10)
	5	at Winthrop (02-15-10)
TURNOVERS.....	33	GLENVILLE STATE (12-05-09)
	30	at Virginia (12-29-09)
FOULS.....	27	at Gardner-Webb (01-02-10)
	23	JAMES MADISON (12-01-09)
	23	at Lafayette (11-28-09)

2009-10 Liberty Women's Basketball
 Liberty High/Low Analysis (as of Mar 03, 2010)
 All games

Opponent - GAME HIGHS

POINTS.....	70	at Gardner-Webb (01-02-10)
	70	at Auburn (12-15-09)
	66	at UNC Asheville (02-27-10)
	63	at Virginia (12-29-09)
	62	at High Point (01-30-10)
FIELD GOALS MADE.....	24	at Auburn (12-15-09)
	23	GARDNER-WEBB (02-08-10)
FIELD GOAL ATTEMPTS.....	78	GLENVILLE STATE (12-05-09)
	54	JAMES MADISON (12-01-09)
FIELD GOAL PERCENTAGE.....	.523 (23-44)	GARDNER-WEBB (02-08-10)
	.480 (24-50)	at Auburn (12-15-09)
3 PT FIELD GOALS MADE.....	10	CHARLESTON SOUTHERN (02-22-10)
	9	COASTAL CAROLINA (02-20-10)
3 PT FG ATTEMPTS.....	49	GLENVILLE STATE (12-05-09)
	30	at Charleston Southern (01-23-10)
3 PT FG PERCENTAGE.....	.600 (3-5)	at Lafayette (11-28-09)
	.500 (9-18)	COASTAL CAROLINA (02-20-10)
FREE THROWS MADE.....	26	at Gardner-Webb (01-02-10)
	20	at Lafayette (11-28-09)
FREE THROW ATTEMPTS.....	36	at Gardner-Webb (01-02-10)
	32	JAMES MADISON (12-01-09)
FREE THROW PERCENTAGE.....	1.000 (6-6)	at Coastal Carolina (01-25-10)
	.818 (18-22)	at Charleston Southern (01-23-10)
REBOUNDS.....	41	JAMES MADISON (12-01-09)
	35	UNC GREENSBORO (11-17-09)
ASSISTS.....	17	at Gardner-Webb (01-02-10)
	16	vs Tulane (11-20-09)
STEALS.....	19	at Virginia (12-29-09)
	15	GLENVILLE STATE (12-05-09)
BLOCKED SHOTS.....	5	at UNC Asheville (02-27-10)
	5	at Coastal Carolina (01-25-10)
TURNOVERS.....	32	WINSTON-SALEM STATE (11-13-09)
	30	PRESBYTERIAN COLLEGE (01-16-10)
FOULS.....	27	at UNC Asheville (02-27-10)
	25	at High Point (01-30-10)

2009-10 Liberty Women's Basketball
 Liberty High/Low Analysis (as of Mar 03, 2010)
 All games

Liberty - GAME LOWS

POINTS.....	50	JAMES MADISON (12-01-09)
	52	at Winthrop (02-15-10)
	54	at Virginia (12-29-09)
	55	at Navy (11-21-09)
	55	at Presbyterian College (03-01-10)
FIELD GOALS MADE.....	16	at Presbyterian College (03-01-10)
	18	JAMES MADISON (12-01-09)
FIELD GOAL ATTEMPTS.....	41	at Radford (02-01-10)
	42	at Presbyterian College (03-01-10)
FIELD GOAL PERCENTAGE.....	.305 (18-59)	JAMES MADISON (12-01-09)
	.381 (16-42)	at Presbyterian College (03-01-10)
3 PT FIELD GOALS MADE.....	0	GLENVILLE STATE (12-05-09)
	0	at Radford (02-01-10)
	0	COASTAL CAROLINA (02-20-10)
3 PT FG ATTEMPTS.....	1	GLENVILLE STATE (12-05-09)
	3	at Radford (02-01-10)
3 PT FG PERCENTAGE.....	.000 (0-1)	GLENVILLE STATE (12-05-09)
	.000 (0-3)	at Radford (02-01-10)
	.000 (0-5)	COASTAL CAROLINA (02-20-10)
FREE THROWS MADE.....	8	at Virginia (12-29-09)
	8	WINTHROP (01-09-10)
	8	N.C. CENTRAL (02-04-10)
FREE THROW ATTEMPTS.....	10	at Virginia (12-29-09)
	11	WINTHROP (01-09-10)
FREE THROW PERCENTAGE.....	.455 (10-22)	UNC GREENSBORO (11-17-09)
	.524 (11-21)	vs Cornell (12-28-09)
REBOUNDS.....	23	at Auburn (12-15-09)
	28	COASTAL CAROLINA (02-20-10)
ASSISTS.....	4	at Presbyterian College (03-01-10)
	6	JAMES MADISON (12-01-09)
	6	at Auburn (12-15-09)
STEALS.....	6	JAMES MADISON (12-01-09)
	6	N.C. CENTRAL (02-04-10)
BLOCKED SHOTS.....	0	at Navy (11-21-09)
	0	at UNC Asheville (02-27-10)
TURNOVERS.....	13	at Coastal Carolina (01-25-10)
	14	at Lafayette (11-28-09)
	14	at High Point (01-30-10)
	14	COASTAL CAROLINA (02-20-10)
	14	at UNC Asheville (02-27-10)
FOULS.....	10	PRESBYTERIAN COLLEGE (01-16-10)
	11	UNC ASHEVILLE (01-18-10)

2009-10 Liberty Women's Basketball
 Liberty High/Low Analysis (as of Mar 03, 2010)
 All games

Opponent - GAME LOWS

POINTS.....	18	at Winthrop (02-15-10)
	26	WINSTON-SALEM STATE (11-13-09)
	27	PRESBYTERIAN COLLEGE (01-16-10)
	38	WINTHROP (01-09-10)
	38	at Coastal Carolina (01-25-10)
FIELD GOALS MADE.....	5	at Winthrop (02-15-10)
	10	PRESBYTERIAN COLLEGE (01-16-10)
FIELD GOAL ATTEMPTS.....	33	at Presbyterian College (03-01-10)
	36	PRESBYTERIAN COLLEGE (01-16-10)
FIELD GOAL PERCENTAGE.....	.119 (5-42)	at Winthrop (02-15-10)
	.192 (15-78)	GLENVILLE STATE (12-05-09)
3 PT FIELD GOALS MADE.....	0	at Winthrop (02-15-10)
	1	WINSTON-SALEM STATE (11-13-09)
	1	PRESBYTERIAN COLLEGE (01-16-10)
3 PT FG ATTEMPTS.....	5	at Lafayette (11-28-09)
	7	at Virginia (12-29-09)
3 PT FG PERCENTAGE.....	.000 (0-14)	at Winthrop (02-15-10)
	.056 (1-18)	PRESBYTERIAN COLLEGE (01-16-10)
FREE THROWS MADE.....	3	WINSTON-SALEM STATE (11-13-09)
	5	vs Tulane (11-20-09)
FREE THROW ATTEMPTS.....	5	WINSTON-SALEM STATE (11-13-09)
	6	at Coastal Carolina (01-25-10)
FREE THROW PERCENTAGE.....	.421 (8-19)	UNC GREENSBORO (11-17-09)
	.500 (5-10)	vs Tulane (11-20-09)
	.500 (8-16)	NORTH CAROLINA A&T (01-05-10)
REBOUNDS.....	16	CHARLESTON SOUTHERN (02-22-10)
	17	at Presbyterian College (03-01-10)
ASSISTS.....	2	at Winthrop (02-15-10)
	5	WINSTON-SALEM STATE (11-13-09)
STEALS.....	2	at Lafayette (11-28-09)
	2	at High Point (01-30-10)
BLOCKED SHOTS.....	0	WINSTON-SALEM STATE (11-13-09)
	0	at Navy (11-21-09)
	0	vs Cornell (12-28-09)
	0	WINTHROP (01-09-10)
	0	COASTAL CAROLINA (02-20-10)
	0	CHARLESTON SOUTHERN (02-22-10)
TURNOVERS.....	13	at Gardner-Webb (01-02-10)
	15	JAMES MADISON (12-01-09)
	15	at Charleston Southern (01-23-10)
FOULS.....	13	WINSTON-SALEM STATE (11-13-09)
	13	at Auburn (12-15-09)
	13	N.C. CENTRAL (02-04-10)

2009-10 Liberty Women's Basketball
 Liberty Team Game-by-Game (as of Mar 03, 2010)
 All games

TEAM STATISTICS

Opponent	Date	Score	W/L	---TOTAL---		--3-PTS--		FT-FTA		---REBOUNDS---				PF	A	TO	Blk	Stl	Pts---Avg	
				FG-FGA	Pct	3FG-FGA	Pct	Pct	Pct	Off	Def	Tot	Avg							
WINSTON-SALEM STATE	11-13-09	71-26	W	27-57	.474	4-14	.286	13-17	.765	16	23	39	39.0	15	18	19	4	15	71	71.0
UNC GREENSBORO	11-17-09	60-42	W	24-49	.490	2-9	.222	10-22	.455	13	27	40	39.5	17	10	19	4	14	60	65.5
vs Tulane	11-20-09	63-52	W	24-47	.511	4-6	.667	11-19	.579	15	23	38	39.0	16	10	24	3	11	63	64.7
at Navy	11-21-09	55-43	W	19-48	.396	3-8	.375	14-21	.667	17	23	40	39.2	14	11	18	0	7	55	62.2
at Lafayette	11-28-09	90-55	W	37-60	.617	3-6	.500	13-20	.650	15	18	33	38.0	23	15	14	1	14	90	67.8
JAMES MADISON	12-01-09	50-60	L	18-59	.305	1-9	.111	13-17	.765	14	32	46	39.3	23	6	20	3	6	50	64.8
GLENVILLE STATE	12-05-09	86-45	W	35-57	.614	0-1	.000	16-28	.571	18	49	67	43.3	17	25	33	2	11	86	67.9
at Auburn	12-15-09	64-70	L	25-51	.490	2-7	.286	12-13	.923	6	17	23	40.8	18	6	16	1	8	64	67.4
vs Cornell	12-28-09	70-40	W	28-53	.528	3-11	.273	11-21	.524	16	27	43	41.0	18	16	22	4	12	70	67.7
at Virginia	12-29-09	54-63	L	22-54	.407	2-11	.182	8-10	.800	16	18	34	40.3	20	7	30	3	10	54	66.3
at Gardner-Webb	01-02-10	65-70	L	23-52	.442	4-9	.444	15-25	.600	16	30	46	40.8	27	11	23	1	10	65	66.2
NORTH CAROLINA A&T	01-05-10	57-51	W	21-54	.389	1-6	.167	14-23	.609	19	26	45	41.2	16	13	23	3	11	57	65.4
WINTHROP	01-09-10	67-38	W	27-53	.509	5-13	.385	8-11	.727	12	25	37	40.8	15	22	16	3	14	67	65.5
LONGWOOD	01-12-10	78-55	W	30-61	.492	1-9	.111	17-24	.708	26	28	54	41.8	19	19	28	3	12	78	66.4
PRESBYTERIAN COLLEGE	01-16-10	73-27	W	29-45	.644	5-11	.455	10-17	.588	11	21	32	41.1	10	17	21	2	19	73	66.9
UNC ASHEVILLE	01-18-10	82-40	W	29-63	.460	9-17	.529	15-24	.625	24	25	49	41.6	11	21	18	6	18	82	67.8
at Charleston Souther	01-23-10	65-52	W	25-49	.510	1-6	.167	14-25	.560	15	29	44	41.8	17	10	17	1	8	65	67.6
at Coastal Carolina	01-25-10	57-38	W	20-52	.385	3-8	.375	14-23	.609	22	23	45	41.9	15	9	13	3	10	57	67.1
at High Point	01-30-10	75-62	W	24-50	.480	1-6	.167	26-35	.743	12	30	42	41.9	19	9	14	3	8	75	67.5
at Radford	02-01-10	63-45	W	21-41	.512	0-3	.000	21-29	.724	13	23	36	41.7	15	12	24	4	15	63	67.2
N.C. CENTRAL	02-04-10	64-44	W	26-52	.500	4-9	.444	8-13	.615	21	17	38	41.5	15	18	21	3	6	64	67.1
GARDNER-WEBB	02-08-10	56-59	L	21-53	.396	3-11	.273	11-18	.611	14	19	33	41.1	19	11	15	2	8	56	66.6
at Winthrop	02-15-10	52-18	W	20-51	.392	3-12	.250	9-14	.643	18	24	42	41.1	15	8	20	5	12	52	66.0
COASTAL CAROLINA	02-20-10	57-55	W	23-48	.479	0-5	.000	11-20	.550	13	15	28	40.6	16	10	14	1	12	57	65.6
CHARLESTON SOUTHERN	02-22-10	66-56	W	24-44	.545	1-8	.125	17-29	.586	17	21	38	40.5	19	10	22	1	11	66	65.6
at UNC Asheville	02-27-10	94-66	W	33-71	.465	6-11	.545	22-40	.550	27	16	43	40.6	18	22	14	0	16	94	66.7
at Presbyterian Colle	03-01-10	55-40	W	16-42	.381	1-5	.200	22-26	.846	16	20	36	40.4	20	4	21	1	16	55	66.3
Liberty		1789		671-1416	.474	72-231	.312	375-584	.642	442	649	1091	40.4	467	350	539	67	314	1789	66.3
Opponents		1312		439-1262	.348	127-459	.277	307-466	.659	260	433	693	25.7	513	294	575	54	210	1312	48.6

Games played: 27
 Points/game: 66.3
 FG Pct: 47.4
 3FG Pct: 31.2
 FT Pct: 64.2

Rebounds/game: 40.4
 Assists/game: 13.0
 Turnovers/game: 20.0
 Assist/turnover ratio: 0.6
 Steals/game: 11.6
 Blocks/game: 2.5

2009-10 Liberty Women's Basketball
 Liberty Team Game-by-Game Comparison (as of Mar 03, 2010)
 All games

Opponent	1st	2nd	Score	Mar	Total FG	FG Pct	3-Pointers	3FG Pct	Free Throws	FT Pct	Rebounds	Assist	Turnover	Block	Steal	Fouls	
WINSTON-SALEM STATE.....	30/12	41/14	71-26	+45	27-57/11-42	.474/.262	4-14/ 1-12	.286/.083	13-17/ 3-5	.765/.600	39/25	+14	18/5	19/32	4/0	15/4	15/13
UNC GREENSBORO.....	32/21	28/21	60-42	+18	24-49/15-52	.490/.288	2-9/ 4-24	.222/.167	10-22/ 8-19	.455/.421	40/35	+5	10/10	19/21	4/1	14/11	17/21
Tulane.....	32/19	31/33	63-52	+11	24-47/20-48	.511/.417	4-6/ 7-21	.667/.333	11-19/ 5-10	.579/.500	38/22	+16	10/16	24/22	3/2	11/8	16/19
Navy.....	24/32	31/11	55-43	+12	19-48/15-44	.396/.341	3-8/ 4-20	.375/.200	14-21/ 9-15	.667/.600	40/26	+14	11/11	18/17	0/0	7/8	14/19
Lafayette.....	42/28	48/27	90-55	+35	37-60/16-39	.617/.410	3-6/ 3-5	.500/.600	13-20/20-26	.650/.769	33/20	+13	15/8	14/24	1/2	14/2	23/20
JAMES MADISON.....	16/28	34/32	50-60	(10)	18-59/18-54	.305/.333	1-9/ 5-18	.111/.278	13-17/19-32	.765/.594	46/41	+5	6/13	20/15	3/3	6/4	23/15
GLENVILLE STATE.....	39/23	47/22	86-45	+41	35-57/15-78	.614/.192	0-1/ 7-49	.000/.143	16-28/ 8-11	.571/.727	67/29	+38	25/12	33/20	2/1	11/15	17/24
Auburn.....	19/33	45/37	64-70	(6)	25-51/24-50	.490/.480	2-7/ 6-17	.286/.353	12-13/16-23	.923/.696	23/34	(11)	6/14	16/19	1/3	8/6	18/13
Cornell.....	31/14	39/26	70-40	+30	28-53/13-48	.528/.271	3-11/ 4-16	.273/.250	11-21/10-18	.524/.556	43/25	+18	16/9	22/22	4/0	12/6	18/17
Virginia.....	29/33	25/30	54-63	(9)	22-54/21-49	.407/.429	2-11/ 2-7	.182/.286	8-10/19-26	.800/.731	34/26	+8	7/13	30/20	3/2	10/19	20/15
Gardner-Webb.....	29/29	36/41	65-70	(5)	23-52/19-51	.442/.373	4-9/ 6-16	.444/.375	15-25/26-36	.600/.722	46/27	+19	11/17	23/13	1/3	10/9	27/24
NORTH CAROLINA A&T.....	33/27	24/24	57-51	+6	21-54/19-48	.389/.396	1-6/ 5-17	.167/.294	14-23/ 8-16	.609/.500	45/28	+17	13/13	23/19	3/3	11/9	16/18
WINTHROP.....	24/16	43/22	67-38	+29	27-53/13-41	.509/.317	5-13/ 3-9	.385/.333	8-11/ 9-13	.727/.692	37/21	+16	22/10	16/20	3/0	14/4	15/15
LONGWOOD.....	38/25	40/30	78-55	+23	30-61/18-52	.492/.346	1-9/ 7-22	.111/.318	17-24/12-18	.708/.667	54/19	+35	19/13	28/24	3/3	12/12	19/24
PRESBYTERIAN COLLEGE.....	36/10	37/17	73-27	+46	29-45/10-36	.644/.278	5-11/ 1-18	.455/.056	10-17/ 6-10	.588/.600	32/18	+14	17/7	21/30	2/1	19/10	10/16
UNC ASHEVILLE.....	41/17	41/23	82-40	+42	29-63/14-51	.460/.275	9-17/ 5-12	.529/.417	15-24/ 7-12	.625/.583	49/27	+22	21/9	18/25	6/1	18/9	11/19
Charleston Southern.....	37/24	28/28	65-52	+13	25-49/13-47	.510/.277	1-6/ 8-30	.167/.267	14-25/18-22	.560/.818	44/26	+18	10/10	17/15	1/2	8/6	17/23
Coastal Carolina.....	16/21	41/17	57-38	+19	20-52/13-41	.385/.317	3-8/ 6-14	.375/.429	14-23/ 6-6	.609/1.000	45/21	+24	9/7	13/20	3/5	10/7	15/19
High Point.....	34/41	41/21	75-62	+13	24-50/20-49	.480/.408	1-6/ 5-14	.167/.357	26-35/17-27	.743/.630	42/25	+17	9/15	14/16	3/4	8/2	19/25
Radford.....	30/15	33/30	63-45	+18	21-41/15-51	.512/.294	0-3/ 3-12	.000/.250	21-29/12-17	.724/.706	36/26	+10	12/8	24/23	4/3	15/7	15/21
N.C. CENTRAL.....	30/20	34/24	64-44	+20	26-52/17-45	.500/.378	4-9/ 2-11	.444/.182	8-13/ 8-12	.615/.667	38/21	+17	18/12	21/21	3/3	6/11	15/13
GARDNER-WEBB.....	27/25	29/34	56-59	(3)	21-53/23-44	.396/.523	3-11/ 6-13	.273/.462	11-18/ 7-12	.611/.583	33/27	+6	11/13	15/17	2/1	8/4	19/19
Winthrop.....	23/10	29/ 8	52-18	+34	20-51/ 5-42	.392/.119	3-12/ 0-14	.250/.000	9-14/ 8-11	.643/.727	42/32	+10	8/2	20/28	5/3	12/9	15/17
COASTAL CAROLINA.....	33/29	24/26	57-55	+2	23-48/19-42	.479/.452	0-5/ 9-18	.000/.500	11-20/ 8-13	.550/.615	28/26	+2	10/13	14/20	1/0	12/6	16/14
CHARLESTON SOUTHERN.....	34/29	32/27	66-56	+10	24-44/18-41	.545/.439	1-8/ 10-25	.125/.400	17-29/10-16	.586/.625	38/16	+22	10/13	22/22	1/0	11/3	19/22
UNC Asheville.....	54/33	40/33	94-66	+28	33-71/21-44	.465/.477	6-11/ 6-16	.545/.375	22-40/18-24	.550/.750	43/33	+10	22/15	14/28	0/5	16/9	18/27
Presbyterian College.....	33/16	22/24	55-40	+15	16-42/14-33	.381/.424	1-5/ 2-9	.200/.222	22-26/10-16	.846/.625	36/17	+19	4/6	21/22	1/3	16/10	20/21

Note: Game totals are displayed in the format TEAM/OPPONENT for each category

2009-10 Liberty Women's Basketball
 Liberty Combined Team Statistics (as of Mar 03, 2010)
 Conference games

RECORD:	OVERALL	HOME	AWAY	NEUTRAL
ALL GAMES.....	(12-2)	(5-1)	(7-1)	(0-0)
CONFERENCE.....	(12-2)	(5-1)	(7-1)	(0-0)
NON-CONFERENCE.....	(0-0)	(0-0)	(0-0)	(0-0)

## Player	GP-GS	Min--Avg	---TOTAL---		---3-PTS---		FT-FTA	Pct	---REBOUNDS---				PF	FO	A	TO	Blk	Stl	Pts	Avg
			FG-FGA	Pct	3FG-FGA	Pct			Off	Def	Tot	Avg								
40 BROWN, Devon.....	14-14	399 28.5	82-178	.461	15-51	.294	42-58	.724	34	80	114	8.1	28	0	22	34	6	34	221	15.8
23 WARLEY, Avery.....	14-14	376 26.9	63-103	.612	0-1	.000	45-77	.584	56	71	127	9.1	42	2	6	36	16	21	171	12.2
11 ANTIC, Jelena.....	8-4	177 22.1	28-44	.636	4-8	.500	5-9	.556	20	15	35	4.4	20	1	12	17	0	11	65	8.1
21 MAYS, Amber.....	14-14	359 25.6	42-84	.500	2-4	.500	24-47	.511	8	16	24	1.7	32	1	50	40	1	25	110	7.9
15 BEECHER, Kylee.....	14-10	351 25.1	30-74	.405	1-8	.125	39-50	.780	33	35	68	4.9	26	0	12	22	3	13	100	7.1
32 McLEOD, Rachel.....	14-14	364 26.0	22-62	.355	5-10	.500	19-22	.864	17	23	40	2.9	11	0	27	17	0	19	68	4.9
25 MORGAN, Dymond.....	14-0	240 17.1	22-64	.344	4-15	.267	19-29	.655	1	10	11	0.8	28	0	25	27	0	28	67	4.8
12 DALE, Danika.....	14-0	247 17.6	23-52	.442	5-12	.417	15-24	.625	12	24	36	2.6	19	0	13	22	4	9	66	4.7
01 WASHINGTON, LaKendr	14-0	190 13.6	20-39	.513	6-16	.375	2-9	.222	6	7	13	0.9	19	0	8	19	0	17	48	3.4
54 COY, Carra.....	12-0	97 8.1	3-14	.214	0-0	.000	5-11	.455	15	7	22	1.8	11	0	1	5	3	0	11	0.9
TEAM.....									28	33	61	4.4	0		13					
Total.....	14	2800	335-714	.469	42-125	.336	215-336	.640	230	321	551	39.4	236	4	176	252	33	177	927	66.2
Opponents.....	14	2800	217-613	.354	70-220	.318	162-235	.689	119	223	342	24.4	282	-	145	299	31	95	666	47.6

TEAM STATISTICS	LIBERTY	OPP	DATE	OPPONENT	W/L	SCORE	ATTEND
SCORING.....	927	666	*01-02-10	at Gardner-Webb	L	65-70	249
Points per game.....	66.2	47.6	*01-09-10	WINTHROP	W	67-38	557
Scoring margin.....	+18.6	-	*01-16-10	PRESBYTERIAN COLLEGE	W	73-27	688
FIELD GOALS-ATT.....	335-714	217-613	*01-18-10	UNC ASHEVILLE	W	82-40	826
Field goal pct.....	.469	.354	*01-23-10	at Charleston Southern	W	65-52	881
3 POINT FG-ATT.....	42-125	70-220	*01-25-10	at Coastal Carolina	W	57-38	687
3-point FG pct.....	.336	.318	*01-30-10	at High Point	W	75-62	439
3-pt FG made per game.	3.0	5.0	*02-01-10	at Radford	W	63-45	384
FREE THROWS-ATT.....	215-336	162-235	*02-08-10	GARDNER-WEBB	L	56-59	833
Free throw pct.....	.640	.689	*02-15-10	at Winthrop	W	52-18	560
F-Throws made per game	15.4	11.6	*02-20-10	COASTAL CAROLINA	W	57-55	3387
REBOUNDS.....	551	342	*02-22-10	CHARLESTON SOUTHERN	W	66-56	781
Rebounds per game....	39.4	24.4	*02-27-10	at UNC Asheville	W	94-66	986
Rebounding margin....	+14.9	-	*03-01-10	at Presbyterian College	W	55-40	336
ASSISTS.....	176	145	% = Navy Classic (Annapolis, Md.)				
Assists per game.....	12.6	10.4	# = Marriott Cavalier Classic (Charlottesville, Va.)				
TURNOVERS.....	252	299	* = Big South Conference game				
Turnovers per game....	18.0	21.4					
Turnover margin.....	+3.4	-					
Assist/turnover ratio.	0.7	0.5					
STEALS.....	177	95					
Steals per game.....	12.6	6.8					
BLOCKS.....	33	31					
Blocks per game.....	2.4	2.2					
ATTENDANCE.....	7072	4522					
Home games-Avg/Game...	6-1179	8-565					
Neutral site-Avg/Game.	-	0-0					

SCORE BY PERIODS:	1st	2nd	Total
Liberty.....	451	476	- 927
Opponents.....	315	351	- 666

2009-10 Liberty Women's Basketball
 Liberty Extended Season Box Score (as of Mar 03, 2010)
 All games

RECORD:	OVERALL	HOME	AWAY	NEUTRAL
ALL GAMES.....	(22-5)	(11-2)	(9-3)	(2-0)
CONFERENCE.....	(12-2)	(5-1)	(7-1)	(0-0)
NON-CONFERENCE.....	(10-3)	(6-1)	(2-2)	(2-0)

# Player	GP-GS	Min--Avg	-----TOTAL-----			-----3-PTS-----			-----REBOUNDS-----										SPG	Pts Avg							
			FG-FGA	Pct	3FG-FGA	Pct	3FG/G	FT-FTA	Pct	Off	Def	Tot	Avg	PF	FO	A	APG	TO			TOPG	A/TO	Blk	BRG	Stl		
40 BROWN, Devon.....	27-27	762 28.2	165-348	.474	33-99	.333	1.22	82-114	.719	70	160	230	8.5	52	0	41	1.52	68	2.52	0.60	15	0.56	55	2.04	445	16.5	
23 WARLEY, Avery.....	27-27	733 27.1	120-201	.597	0-1	.000	0.00	58-106	.547	107	125	232	8.6	79	4	12	0.44	73	2.70	0.16	19	0.70	30	1.11	298	11.0	
21 MAYS, Amber.....	27-27	720 26.7	89-166	.536	4-7	.571	0.15	42-77	.545	11	33	44	1.6	69	2	106	3.93	87	3.22	1.22	1	0.04	63	2.33	224	8.3	
11 ANTTIC, Jelena.....	17-8	391 23.0	55-103	.534	6-14	.429	0.35	19-31	.613	43	43	86	5.1	33	1	29	1.71	41	2.41	0.71	2	0.12	19	1.12	135	7.9	
15 BEECHER, Kylee.....	27-19	683 25.3	61-139	.439	1-12	.083	0.04	60-80	.750	54	57	111	4.1	46	0	25	0.93	48	1.78	0.52	7	0.26	20	0.74	183	6.8	
32 McLEOD, Rachel.....	27-27	654 24.2	47-130	.362	6-18	.333	0.22	36-46	.783	24	37	61	2.3	29	0	47	1.74	39	1.44	1.21	1	0.04	28	1.04	136	5.0	
01 WASHINGTON, Lakendr	27-0	390 14.4	50-109	.459	10-37	.270	0.37	11-24	.458	16	27	43	1.6	42	1	19	0.70	47	1.74	0.40	3	0.11	36	1.33	121	4.5	
12 DALE, Danika.....	27-0	434 16.1	39-95	.411	7-23	.304	0.26	29-46	.630	26	62	88	3.3	34	0	29	1.07	44	1.63	0.66	11	0.41	20	0.74	114	4.2	
25 MORGAN, Dymond.....	27-0	434 16.1	37-100	.370	5-20	.250	0.19	29-42	.690	7	33	40	1.5	53	0	41	1.52	59	2.19	0.69	0	0.00	41	1.52	108	4.0	
54 COY, Carra.....	21-0	199 9.5	8-25	.320	0-0	.000	0.00	9-18	.500	19	17	36	1.7	30	0	1	0.05	13	0.62	0.08	8	0.38	2	0.10	25	1.2	
TEAM.....										65	55	120	4.4	0													20

Total.....	27	5400	671-1416	.474	72-231	.312	2.67	375-584	.642	442	649	1091	40.4	467	8	350	12.96	539	19.96	0.65	67	2.48	314	11.63	1789	66.3
Opponents.....	27	5400	439-1262	.348	127-459	.277	4.70	307-466	.659	260	433	693	25.7	513	-	294	10.89	575	21.30	0.51	54	2.00	210	7.78	1312	48.6

SCORE BY PERIODS:	1st	2nd	Total	DEADBALL	REBOUNDS:	OFF	DEF	TOTAL
Liberty.....	846	943	-	1789		80	1	81
Opponents.....	630	682	-	1312		73	0	73

2009-10 Liberty Women's Basketball
 Liberty Combined Team Statistics (as of Mar 03, 2010)
 All games

RECORD:	OVERALL	HOME	AWAY	NEUTRAL
ALL GAMES.....	(22-5)	(11-2)	(9-3)	(2-0)
CONFERENCE.....	(12-2)	(5-1)	(7-1)	(0-0)
NON-CONFERENCE.....	(10-3)	(6-1)	(2-2)	(2-0)

## Player	GP-GS	Min--Avg	---TOTAL---		---3-PTS---		FT-FTA	Pct	---REBOUNDS---				PF	FO	A	TO	Blk	Stl	Pts	Avg
			FG-FGA	Pct	3FG-FGA	Pct			Off	Def	Tot	Avg								
40 BROWN, Devon.....	27-27	762 28.2	165-348	.474	33-99	.333	82-114	.719	70	160	230	8.5	52	0	41	68	15	55	445	16.5
23 WARLEY, Avery.....	27-27	733 27.1	120-201	.597	0-1	.000	58-106	.547	107	125	232	8.6	79	4	12	73	19	30	298	11.0
21 MAYS, Amber.....	27-27	720 26.7	89-166	.536	4-7	.571	42-77	.545	11	33	44	1.6	69	2	106	87	1	63	224	8.3
11 ANTIC, Jelena.....	17-8	391 23.0	55-103	.534	6-14	.429	19-31	.613	43	43	86	5.1	33	1	29	41	2	19	135	7.9
15 BEECHER, Kylee.....	27-19	683 25.3	61-139	.439	1-12	.083	60-80	.750	54	57	111	4.1	46	0	25	48	7	20	183	6.8
32 McLEOD, Rachel.....	27-27	654 24.2	47-130	.362	6-18	.333	36-46	.783	24	37	61	2.3	29	0	47	39	1	28	136	5.0
01 WASHINGTON, LaKendr	27-0	390 14.4	50-109	.459	10-37	.270	11-24	.458	16	27	43	1.6	42	1	19	47	3	36	121	4.5
12 DALE, Danika.....	27-0	434 16.1	39-95	.411	7-23	.304	29-46	.630	26	62	88	3.3	34	0	29	44	11	20	114	4.2
25 MORGAN, Dymond.....	27-0	434 16.1	37-100	.370	5-20	.250	29-42	.690	7	33	40	1.5	53	0	41	59	0	41	108	4.0
54 COY, Carra.....	21-0	199 9.5	8-25	.320	0-0	.000	9-18	.500	19	17	36	1.7	30	0	1	13	8	2	25	1.2
TEAM.....									65	55	120	4.4	0		20					

Total.....	27	5400	671-1416	.474	72-231	.312	375-584	.642	442	649	1091	40.4	467	8	350	539	67	314	1789	66.3
Opponents.....	27	5400	439-1262	.348	127-459	.277	307-466	.659	260	433	693	25.7	513	-	294	575	54	210	1312	48.6

TEAM STATISTICS	LIBERTY	OPP	DATE	OPPONENT	W/L	SCORE	ATTEND

SCORING.....	1789	1312	11-13-09	WINSTON-SALEM STATE	W	71-26	1192
Points per game.....	66.3	48.6	11-17-09	UNC GREENSBORO	W	60-42	786
Scoring margin.....	+17.7	-	%11-20-09	vs Tulane	W	63-52	207
FIELD GOALS-ATT.....	671-1416	439-1262	%11-21-09	at Navy	W	55-43	852
Field goal pct.....	.474	.348	11-28-09	at Lafayette	W	90-55	324
3 POINT FG-ATT.....	72-231	127-459	12-01-09	JAMES MADISON	L	50-60	1209
3-point FG pct.....	.312	.277	12-05-09	GLENNVILLE STATE	W	86-45	611
3-pt FG made per game.	2.7	4.7	12-15-09	at Auburn	L	64-70	1566
FREE THROWS-ATT.....	375-584	307-466	#12-28-09	vs Cornell	W	70-40	452
Free throw pct.....	.642	.659	#12-29-09	at Virginia	L	54-63	3096
F-Throws made per game	13.9	11.4	*01-02-10	at Gardner-Webb	L	65-70	249
REBOUNDS.....	1091	693	01-05-10	NORTH CAROLINA A&T	W	57-51	365
Rebounds per game....	40.4	25.7	*01-09-10	WINTHROP	W	67-38	557
Rebounding margin....	+14.7	-	01-12-10	LONGWOOD	W	78-55	460
ASSISTS.....	350	294	*01-16-10	PRESBYTERIAN COLLEGE	W	73-27	688
Assists per game.....	13.0	10.9	*01-18-10	UNC ASHEVILLE	W	82-40	826
TURNOVERS.....	539	575	*01-23-10	at Charleston Southern	W	65-52	881
Turnovers per game....	20.0	21.3	*01-25-10	at Coastal Carolina	W	57-38	687
Turnover margin.....	+1.3	-	*01-30-10	at High Point	W	75-62	439
Assist/turnover ratio.	0.6	0.5	*02-01-10	at Radford	W	63-45	384
STEALS.....	314	210	02-04-10	N.C. CENTRAL	W	64-44	781
Steals per game.....	11.6	7.8	*02-08-10	GARDNER-WEBB	L	56-59	833
BLOCKS.....	67	54	*02-15-10	at Winthrop	W	52-18	560
Blocks per game.....	2.5	2.0	*02-20-10	COASTAL CAROLINA	W	57-55	3387
ATTENDANCE.....	12476	11019	*02-22-10	CHARLESTON SOUTHERN	W	66-56	781
Home games-Avg/Game...	13-960	12-863	*02-27-10	at UNC Asheville	W	94-66	986
Neutral site-Avg/Game.	-	2-330	*03-01-10	at Presbyterian College	W	55-40	336

% = Navy Classic (Annapolis, Md.)
 # = Marriott Cavalier Classic (Charlottesville, Va.)
 * = Big South Conference game

SCORE BY PERIODS:	1st	2nd	Total

Liberty.....	846	943	- 1789
Opponents.....	630	682	- 1312