

**2009-10 Liberty  
Women's Basketball  
Quick Facts**

**General Information**

Name of School..... Liberty University  
City/Zip ..... Lynchburg, Va. 24502  
Founded ..... 1971  
Enrollment ..... 11,311  
Nickname ..... Lady Flames  
School Colors ..... Red, White & Blue  
Home Arena..... Vines Center  
Capacity..... 8,085  
Affiliation ..... NCAA Division I  
Conference ..... Big South  
Founder ..... Dr. Jerry Falwell  
Chancellor ..... Jerry Falwell, Jr.  
Director of Athletics..... Jeff Barber  
Athletics Dept. Phone..... (434) 582-2100

**Women's Basketball Information**

Head Coach..... Carey Green  
Alma Mater ..... Coastal Carolina, '79  
Record at School ..... 258-82 (11th Year)  
Career Record..... Same  
Assistant Coaches  
..... Alexis Sherard (St. Michael's, '93)  
..... Heather Stephens (Wyoming, '03)  
..... Andy Bloodworth (Calvin, '98)  
Certified Athletic Trainer  
..... Madeline Bosek

**History**

First Season of Basketball..... 1975-76  
All-Time Record ..... 529-410  
NCAA Tournament Appearances..... 12  
Last NCAA Appearance..... 2009  
Opponent..... Louisville  
Result ..... L/42-62 (First Round)  
Final/Highest Ranking ..... N/A  
Final 2008-09 Record..... 24-9  
Conference Record/Finish..... 15-1/First  
Starters Returning/Lost..... 2/3  
Letterwinners Returning/Lost..... 7/7  
Newcomers..... 6

**Athletics Communications Info.**

Asst. AD - Communications  
..... Todd Wetmore  
SID Office Phone..... (434) 582-2292  
Cell Phone..... (434) 841-8974  
Email Address..... twetmore@liberty.edu  
Assoc. Director ..... Ryan Bomberger  
Cell Phone ..... (434) 221-5576  
Email Address... rbomberger@liberty.edu  
Asst. Director ..... Paul Carmany  
Cell Phone ..... (434) 221-5575  
Email Address... pjcarmany@liberty.edu  
Asst. Director ..... Eric Brown  
Cell Phone ..... (434) 221-8817  
Email Address..... eqbrown@liberty.edu  
Grad. Assistant ..... Jennifer Shelton  
Cell Phone ..... (828) 638-3876  
Email Address... jbshelton2@liberty.edu  
WBB Contact..... Paul Carmany  
Ath. Comm. Fax..... (434) 582-2076  
Website..... LibertyFlames.com

**Media Information**

**Radio**

Station ..... WWMC "The Light" (90.9 FM)  
Play-By-Play ..... Jamie Hall  
Color ..... Josh Wood

**Television**

Station ..... None  
Play-By-Play ..... N/A  
Color ..... N/A

**Game No. 27 - March 1, 2010**



**Liberty LADY FLAMES  
(21-5, 11-2 Big South)**

at



**Presbyterian College BLUE HOSE  
(5-22, 3-10 Big South)**

**Clinton, S.C. - Templeton Center - 7 p.m.**

**The Game**

Liberty (21-5, 11-2 Big South) will play its final road game of the 2009-10 regular season at Presbyterian College (5-22, 3-10 Big South), Monday evening. Tipoff is slated for 7 p.m. at the Templeton Center, as the Lady Flames seek their seventh consecutive road win and a sweep of their season series with the Blue Hose.

The Lady Flames are 4-0 all-time versus the Blue Hose, in a head-to-head series which just began on Jan. 26, 2008. Liberty was victorious in its only previous trip to Clinton, S.C.

**Last Time Out**

Six Lady Flames scored in double figures, led by Avery Warley's 22 points, helping Liberty record a season-high point total in its 94-66 victory at UNC Asheville, Saturday afternoon. Liberty forced 28 Bulldog turnovers and converted the miscues into 42 points, as the Lady Flames completed a season sweep of UNC Asheville. The 94 points were the second most Liberty has ever scored in a Big South Conference game.

**On Deck**

Liberty will return home for its final two contests of the regular season, beginning with a Friday contest versus Commonwealth rival Radford at the Vines Center. Tipoff is scheduled for 7 p.m. for the 52nd all-time meeting between the Lady Flames and Highlanders. Liberty owns a 28-23 edge in the head-to-head series.

**Lady Flames On The Air**

All Lady Flames basketball games may be heard LIVE on WWMC 90.9 FM "The Light." Jamie Hall, in the midst of his 16th year of broadcasting Lady Flames basketball, is once again handling the courtside play-by-play duties for road games. Nick Pierce and Josh Wood serve as the primary commentators for home contests.

**Liberty's Probable Starters**

No.	Name	Pos.	Ht.	Yr.	PPG	RPG	Other Stats
21	Amber Mays	G	5-6	Sr.	8.4	1.7	4.0 apg
32	Rachel McLeod	G	5-10	Jr.	5.1	2.2	1.8 apg
40	Devon Brown	G	5-10	R-Fr.	16.5	8.7	2.0 spg
15	Kylee Beecher	F	6-4	So.	7.0	4.2	75.0 FT%
23	Avery Warley	F	6-3	R-So.	11.0	8.5	59.1 FG%

**Reserves**

1	LaKendra Washington	G	5-8	Fr.	4.6	1.6	1.4 spg
11	Jelena Antic	F	6-2	Fr.	8.1	5.2	1.6 apg
12	Danika Dale	G	6-1	So.	4.3	3.3	1.1 apg
25	Dymond Morgan	G	5-7	Jr.	3.9	1.5	1.5 spg
30	Brittany Campbell	G	6-0	R-Fr.	--	--	--
43	Kittery Maine	F	6-4	Jr.	--	--	--
54	Carra Coy	F	6-6	Fr.	1.2	1.7	0.4 bpg

## 2009-10 Liberty Women's Basketball Schedule/Results

**Overall: 21-5**  
**Big South: 11-2**

11/13 WINSTON-SALEM ST.\* W, 71-26  
11/17 UNC GREENSBORO^ W, 60-42

*Navy Classic (Annapolis, Md.)*

11/20 vs. Tulane W, 63-52  
11/21 at Navy W, 55-43

11/28 at Lafayette W, 90-55

12/1 JAMES MADISON^ L, 50-60  
12/5 GLENVILLE STATE^ W, 86-45  
12/15 at Auburn L, 64-70

*Marriott Cavalier Classic (Charlottesville, Va.)*

12/28 vs. Cornell W, 70-40  
12/29 at No. 21/23 Virginia L, 54-63

1/2 at Gardner-Webb\* L, 65-70  
1/5 N.C. A&T^ W, 57-51  
1/9 WINTHROP\*^ W, 67-38  
1/12 LONGWOOD^ W, 78-55  
1/16 PRESBYTERIAN\*^ W, 73-27  
1/18 UNC ASHEVILLE\*^ W, 82-40  
1/23 at Charleston So.\* W, 65-52  
1/25 at Coastal Carolina\* W, 57-38  
1/30 at High Point\* W, 75-62

2/1 at Radford\* W, 63-45  
2/4 N.C. CENTRAL^ W, 64-44  
2/8 GARDNER-WEBB\* & L, 56-59  
2/15 at Winthrop\* W, 52-18  
2/20 COASTAL CAR.\*^ W, 57-55  
2/22 CHARLESTON SO.\*^ W, 66-56  
2/27 at UNC Asheville\* W, 94-66

3/1 at Presbyterian\* 7 p.m.  
3/5 RADFORD\*^ 7 p.m.  
3/8 HIGH POINT\*^ 7 p.m.

*Big South WBB Championship  
(High Point, N.C.)*

3/12 Quarterfinals TBA  
3/13 Semifinals# 1/3 p.m.  
3/14 Championship Game# 2 p.m.

*NCAA Tournament*

3/20-21 First Round TBA  
3/22-23 Second Round TBA

**Home Games in BOLD CAPS**

\* - Big South Conference Game  
All times are Eastern Standard Time  
^ - Broadcast on  
Flames Sports Network  
& - Broadcast on SportSouth/MASN

### Team Statistical Leaders

**Total Points**

Devon Brown - 430/16.5 ppg  
Avery Warley - 285/11.0 ppg

**Total Rebounds**

Devon Brown - 225/8.7 rpg  
Avery Warley - 221/8.5 rpg

**Total Assists**

Amber Mays - 105/4.0 apg  
Rachel McLeod - 47/1.8 apg

**Total Steals**

Amber Mays - 60/2.3 spg  
Devon Brown - 52/2.0 spg

## Head Coach Carey Green

**Record at Liberty:** 258-82 (11th Year)  
**Career Record:** Same

**9 Big South Championships:** 2000, 2001, 2002, 2003, 2004, 2005, 2006, 2008, 2009  
**8 NCAA Appearances:** 2000, 2001, 2002, 2003, 2004, 2005 (Sweet 16), 2006, 2008, 2009  
**5-time Big South Coach of the Year:** 2000, 2003, 2006, 2008, 2009  
**3-time VaSID State Coach of the Year:** 2003, 2005, 2006

Liberty head women's basketball coach Carey Green, in his 11th season with the Lady Flames, has instilled quite a winning tradition during his tenure at the institution. His teams have averaged more than 23 victories per year, putting his name alongside the nation's premier women's basketball coaches.

Green has accumulated a 258-82 record on the Liberty bench, good for a winning percentage of .759. He currently ranks ninth all-time among NCAA Division I women's basketball coaches in winning percentage, ahead of renowned coaching names like Rutgers' Vivian Stringer, LSU's Van Chancellor and North Carolina's Sylvia Hatchell.

More importantly, Liberty has won the Big South Tournament title and advanced to the NCAA Tournament nine times with Green as head coach. Liberty has totaled 23 or more victories during eight of those years, including the 2004-05 season, which saw the Lady Flames reach the Sweet 16 for the first time in program history.

Green has actually been to the postseason on 21 occasions as a women's basketball coach, a span which includes a dozen years as an assistant coach at Clemson. In all but one of the 21 appearances, he has experienced the NCAA Tournament.

Last season, Green earned his unprecedented fifth Big South Coach of the Year award, after guiding a team decimated by ACL injuries to a 24-9 record and its 12th NCAA Tournament appearance in the last 13 years. The Lady Flames also won the Hokie Hardwood Classic, claiming their first-ever victory over Virginia Tech in the tournament championship game.

At season's end, Green saw his second player selected in the WNBA Draft, as Megan Frazee was taken in the second round by the San Antonio Silver Stars. She then played part of her rookie season alongside 2005 Liberty alum Katie (Feenstra) Mattera in San Antonio.

Rebounding and defense have always been staples of Green-coached teams, and the 2008-09 Lady Flames were no exception. Liberty outrebounded opponents by an average of 12.7 caroms per game, ranking second nationally. The Lady Flames have now been listed among the nation's top five teams in rebounding margin for six straight years. Liberty led the nation in the category in 2003-04 and 2004-05. The Lady Flames also ended the season ranked in the top 10 nationally for scoring defense (second, 52.6 ppg) and field goal percentage defense (sixth, .345).

A key late-season conference victory over High Point in 2006 made Green the winningest coach in Big South Conference history. He is also Liberty's career wins leader.

The 2004-05 year was a special one on Liberty Mountain, for many reasons. A senior-laden Lady Flames team recorded upset wins over No. 4 seed Penn State (78-70) and No. 5 seed DePaul (88-79) in the first two rounds of the NCAA Tournament, becoming just the second team ever to advance to the Sweet 16 as a No. 13 seed. The Lady Flames ended the season with their highest national ranking to date, No. 21 (USA Today/ESPN).

Green's track record shows he has the ability to meet those challenges. The Lady Flames have recorded two wins over UNLV, Virginia and West Virginia and solo victories over No. 19 DePaul, No. 17 Kansas State, No. 25 Penn State, Virginia Tech and Wake Forest during Green's tenure. The upset victory over No. 25 Virginia in 2003 marked Liberty's first win over a Top 25 team.

His record against conference foes is equally impressive. He led the Lady Flames on a Big South record 47-game winning streak and currently owns a .912 (165-16) winning percentage against conference teams. Green has marched through conference play with one or fewer setbacks seven times, while guiding the Lady Flames to two undefeated conference seasons.

## Big South Conference Update

(Records Updated Through 2/27)

### Overall Standings

	W	L	Pct.
Gardner-Webb	25	3	.893
<b>Liberty</b>	<b>21</b>	<b>5</b>	<b>.808</b>
Coastal Carolina	15	10	.600
High Point	16	12	.571
Charleston So.	15	12	.556
Winthrop	11	16	.407
UNC Asheville	7	20	.259
Radford	6	19	.240
Presbyterian	5	22	.185

### Conference Standings

	W	L	Pct.
Gardner-Webb	14	1	.933
<b>Liberty</b>	<b>11</b>	<b>2</b>	<b>.846</b>
High Point	9	6	.600
Charleston So.	7	7	.500
Coastal Carolina	6	7	.462
Winthrop	5	8	.385
Radford	5	9	.357
Presbyterian	3	10	.231
UNC Asheville	2	12	.143

### Upcoming Schedule

#### Monday, March 1

Coastal Carolina at Winthrop	7 p.m.
Radford at UNC Asheville	7 p.m.
<b>Liberty at Presbyterian</b>	<b>7 p.m.</b>

#### Friday, March 5

Gardner-Webb at Coastal Car.	7 p.m.
Winthrop at UNC Asheville	7 p.m.
Presbyterian at Charleston So.	7 p.m.
<b>Radford at Liberty</b>	<b>7 p.m.</b>

#### Monday, March 8

Winthrop at Charleston So.	7 p.m.
<b>High Point at Liberty</b>	<b>7 p.m.</b>
Presbyterian at Coastal Car.	7 p.m.

#### End Regular Season

## Scouting Presbyterian College

Monday evening's contest is the final home game of the year for Presbyterian College at the Templeton Center. The Blue Hose have gone 0-16 in games played away from Clinton, S.C., but have played well at home, winning five of their 11 home contests this season. However, Presbyterian College has dropped its last two home tilts as part of a current five-game losing skid.

A trio of players stand out on the Blue Hose season stat sheet, led by Mariah Pietrowski, a 6-2 freshman center. She ranks just behind the Lady Flames' Avery Warley on the Big South field goal percentage list at .589 and posts a team-high 10.8 ppg.

Next on Presbyterian College's scoring list is Amanda Mills. The 5-6 junior sharpshooter from Oregon City, Ore., has canned a team-high 44 triples and averages 8.3 ppg.

Dria David, a 5-8 freshman guard, does a little bit of everything for the Blue Hose. For example, she had 12 points, 16 rebounds and six assists in Saturday's loss to Radford. On the year, David leads the team in rebounds (5.4 rpg), assists (2.6 apg) and steals (2.2 spg).

### The Coaching Matchup

Liberty Head Coach Carey Green is in his 11th season with the Lady Flames, and has led his team to nine Big South titles. A five-time Big South Coach of the Year, Green owns a 258-82 career record and is the all-time wins leader at Liberty and among Big South women's basketball coaches. His career winning percentage (.759) ranked ninth all-time among NCAA Division I women's basketball coaches at the season's outset. Green is 4-0 all-time against Presbyterian College.

Ronny Fisher is 9-47 in his second year as Presbyterian's head coach. He previously spent 10 years as an assistant coach for the Blue Hose men's basketball team. A 1990 graduate of Furman, Fisher is 0-3 coaching against Liberty.

### Liberty-Presbyterian College Series Notes

Liberty is 4-0 all-time versus Presbyterian College, including 1-0 at the Templeton Center.

The Lady Flames have won each of their three home matchups with the Blue Hose by at least 38 points. However, they had a more difficult time in their first-ever trip to the Templeton Center, Jan. 17, 2009. Liberty took a slim, 20-19 edge into the locker room at halftime, before finally gaining some breathing room with a 15-2 run to open the second half. The Lady Flames went on to claim a 59-49 victory, paced by Megan Frazee's 14 points and five rebounds. Amanda Mills led all players with 21 points for Presbyterian College, including four triples.

Big runs played a key role in the first Liberty-Presbyterian College contest this season as well, played on Jan. 16 at the Vines Center. The Lady Flames fashioned a pair of 15-0 surges in the opening stanza, building a 36-10 lead at the break on their way to a 73-27 triumph. Three Lady Flames scored in double figures, led by Jelena Antic with 14 points. Mariah Pietrowski's six tallies paced the visitors.

Liberty has scored an average of 72.8 points per contest all-time against the Blue Hose, but a Lady Flame has never finished with more than 15 points individually.

### Liberty.....Statistical Comparison..... Presbyterian College

21-5 .....	Record .....	5-22
47.7 .....	Field Goal Percentage .....	36.3
34.6 .....	Opponent Field Goal Percentage .....	41.3
31.4 .....	Three-Point Field Goal Percentage .....	26.1
2.7 .....	Three-Pointers Made Per Game .....	3.9
63.3 .....	Free Throw Percentage .....	64.7
40.6 .....	Rebound Average .....	34.0
26.0 .....	Opponent Rebound Average .....	35.3
+14.6 .....	Rebound Differential .....	-1.3
66.7 .....	Points Per Game .....	49.6
48.9 .....	Points Allowed Per Game .....	63.3
+17.8 .....	Point Differential .....	-13.7





## NCAA Top 25 Polls

### AP Top 25

1) Connecticut (27-0).....	1,000 pts.
2) Stanford (25-1) .....	959
3) Nebraska (25-0) .....	918
4) Tennessee (24-2) .....	882
5) Xavier (22-3).....	809
6) Duke (23-4) .....	791
7) Notre Dame (23-3) .....	724
8) West Virginia (24-3).....	706
9) Florida State (23-4).....	676
10) Ohio State (26-4).....	663
11) Oklahoma (19-7).....	592
12) Texas A&M (19-6).....	514
13) Georgetown (22-4) .....	493
14) Texas (19-7) .....	457
15) Iowa State (20-5).....	438
16) Kentucky (23-4).....	422
17) Baylor (19-7).....	372
18) St. John's (21-5).....	309
19) Gonzaga (23-4) .....	236
20) LSU (18-7).....	185
<b>21) Virginia (20-6).....</b>	<b>176</b>
22) Georgia Tech (21-7) .....	129
23) Oklahoma State (18-8).....	118
24T) Georgia (20-7).....	114
24T) Hartford (23-3).....	114

### 2009-10 Opponents in Bold

### ESPN/USA Today Coaches Top 25

1) Connecticut (27-0).....	775 pts.
2) Stanford (25-1) .....	742
3) Nebraska (25-0) .....	715
4) Tennessee (25-2) .....	679
5) Xavier (22-3).....	646
6) Duke (23-4) .....	608
7) West Virginia (24-3).....	580
8) Notre Dame (23-3) .....	558
9) Florida State (24-4) .....	533
10) Oklahoma (19-7) .....	467
11) Georgetown (22-4) .....	460
12) Ohio State (26-4).....	441
13) Iowa State (20-5).....	373
14) Kentucky (23-4).....	367
15) Texas A&M (19-7).....	304
16) Texas (19-7) .....	293
17) Baylor (20-7).....	289
<b>18) Virginia (20-7).....</b>	<b>222</b>
19) St. John's (21-5).....	201
20) Gonzaga (23-4) .....	188
21) Oklahoma State (18-8).....	140
22) Vanderbilt (19-8).....	120
23) Hartford (23-3).....	119
24) Georgia (20-7).....	64
25) Michigan State (19-8).....	26

### 2009-10 Opponents in Bold

## Liberty Versus the Big South Conference

Liberty has enjoyed a considerable amount of success versus Big South Conference opposition, since joining the league for the 1991-92 season. The Lady Flames have won the conference tournament 12 times and captured 11 regular-season championships.

Liberty is 238-69 (.775) all-time against Big South opponents, including 202-63 in regular-season matchups and 36-6 in Big South Championship tilts. During Carey Green's tenure as head coach, the Lady Flames are 165-16 (.912) when facing Big South foes.

### Marvelous in March

Liberty has gone 36-12 during the month of March under Carey Green, with nine of the setbacks coming in the NCAA Tournament. The Lady Flames are 9-2 in the regular season, 25-1 in the Big South Championship and 2-9 in the "Big Dance" during the year's third month, under his direction. Last season, the Lady Flames went 5-2 during the calendar year's third month.

The Lady Flames are 44-37 all-time in March contests and did not pick up their first victory in the month until the program's 13th season. Liberty's initial March triumph was an 82-69 win over Randolph-Macon on March 3, 1988.

### Scoring Outburst

Liberty's 94 points scored at UNC Asheville on Saturday were a season high and marked the 11th time in head coach Carey Green's 11 seasons at the helm that the Lady Flames have tallied at least 90 points.

The Lady Flames' point total was their second-highest output ever in a Big South Conference game. Liberty's all-time high against a Big South foe came in a 99-42 home win over Charleston Southern on Feb. 18, 2008.

### Spreading the Wealth

Six Lady Flames scored in double figures Saturday at UNC Asheville, including Avery Warley (22 points), Jelena Antic (13), Kylee Beecher (12), Devon Brown (12), LaKendra Washington (12) and Danika Dale (10). This is the second consecutive year Liberty has recorded a game with six double-digit scorers, after also accomplishing the feat versus St. Paul's in a 92-68 win on Dec. 13, 2008. Warley, Beecher and Dale were also part of the double-digit parade in that contest.

Prior to last season, Liberty had not tallied six double-digit scorers in a game since Jan. 19, 1987 against Ferrum.

### Accurate Avery

Redshirt sophomore Avery Warley shot a perfect 9-for-9 from the field, Feb. 22 against Charleston Southern, setting a new Vines Center record for single-game field goal percentage. Former Lady Flame Moriah Frazee previously held the record, after shooting 8-for-8 versus Virginia Union on Nov. 30, 2007.

Warley also made her first two field goals at UNC Asheville on Saturday, tying her career-long streak of 11 consecutive made field goals before misfiring on her next attempt.

### Coming Through in the Close Ones

Liberty had lost five of its first six close contests this year. The Lady Flames have now won back-to-back games decided by 10 or fewer points, though, defeating Coastal Carolina 57-55 on Feb. 20 and taking down Charleston Southern by a 66-56 score on Feb. 22.

### The Game is Decided by the Opening Tip

In a bit of a statistical oddity, Liberty is a perfect 16-0 when Avery Warley wins the opening tip this season.

### Dominating Defensive Effort

The Lady Flames enjoyed a record-setting defensive performance Feb. 15 at Winthrop. Liberty established new program records for fewest points allowed (18) and lowest opponent field goal percentage (.119) during its 52-18 triumph.

Liberty also came just two points away from equaling the fewest points ever allowed in a game between two Division I women's basketball teams.

**Liberty in the  
Big South Stats**  
(Through Games of 2/27)

**Team**

Scoring Offense (4th) .....	66.7 ppg
Scoring Defense (1st).....	48.9 ppg
Scoring Margin (1st) .....	+17.8 ppg
Free Throw Pct. (9th).....	.633
Field Goal Pct. (1st).....	.477
Field Goal Pct. Defense (1st) ..	.346
3-Pt. FG Pct. (5th) .....	.314
3-Pt. FG Pct. Defense (1st).....	.278
3-Pt. FG Made (9th).....	2.7/game
Rebounds (1st).....	40.6 rpg
Opp. Rebounds (1st) .....	26.0 rpg
Rebounding Margin (1st).....	+14.6 rpg
Offensive Rebounds (1st).....	16.4 rpg
Defensive Rebounds (6th).....	24.2 rpg
Blocked Shots (7th) .....	2.5 bpg
Assists (3rd).....	13.3 apg
Steals (1st) .....	11.5 spg
Turnover Margin (3rd).....	+1.35
Asst./TO Ratio (4th).....	0.67

**Individual**

**Scoring**

Devon Brown (1st).....	16.5 ppg
Avery Warley (10th).....	11.0 ppg
Amber Mays (24th) .....	8.4 ppg

**Rebounding**

Devon Brown (2nd).....	8.7 rpg
Avery Warley (3rd).....	8.5 rpg

**Offensive Rebounds**

Avery Warley (2nd).....	3.9 rpg
Devon Brown (6th).....	2.6 rpg
Kylee Beecher (13th).....	2.0 rpg

**Defensive Rebounds**

Devon Brown (1st).....	6.0 rpg
Avery Warley (5th).....	4.6 rpg

**Field Goal Pct.**

Avery Warley (1st) .....	.591
Devon Brown (4th).....	.474

**Assists**

Amber Mays (2nd).....	4.0 apg
-----------------------	---------

**Free Throw Pct.**

Devon Brown (6th).....	.714
------------------------	------

**Steals**

Amber Mays (3rd).....	2.3 spg
Devon Brown (T-5th) .....	2.0 spg

**Three-Point FG Made**

Devon Brown (12th).....	1.3/game
-------------------------	----------

**Blocked Shots**

Avery Warley (8th).....	0.7 bpg
Devon Brown (12th).....	0.6 bpg

**One Milestone Down, One to Go**

Redshirt sophomore Avery Warley reached a career milestone during the Feb. 15 game at Winthrop. With her putback hoop 13:42 before halftime, Warley became the 50th player in program to score 500 career points.

Warley is also closing in on the 500-rebound milestone, as she has collected 477 boards during the first 59 games of her career. Only 20 Lady Flames have ever tallied 500 career rebounds.

**Bravo to Brown**

Devon Brown won the Big South Player of the Week award on Feb. 9, for the second time this season. She averaged 24.5 ppg and 11.0 rpg during the Lady Flames' road wins at High Point and Radford.

Brown is one of three conference players to capture a pair of Big South Player of the Week awards so far in 2009-10. It also marked the fourth consecutive week a Liberty player received a conference award. Jelena Antic captured back-to-back Big South Freshman of the Week plaudits on Jan. 12 and 19, while Avery Warley was recognized as Big South Player of the Week on Jan. 26.

**20/20 Vision**

Devon Brown (29 points) and Avery Warley (26 points) both set new career highs for points during a Jan. 30, 75-62 victory at High Point. In the process, the duo became the first pair of Lady Flames to score 20 points in the same game since Megan Frazee had 22 points and sister Moriah Frazee added 20 in a 76-57 triumph over High Point on Jan. 29, 2008.

Brown and Warley were at it again, Feb. 22 against Charleston Southern. Warley paced all players with 22 points, while Brown added 20 markers of her own against the Buccaneers.

**National Leader**

Liberty, which has outrebounded 25 of its 26 opponents this season, ranks as the nation's No. 1 team in rebound margin, including games played through Feb. 25. The Lady Flames, who own a +14.6 rebound margin, have ranked among the nation's top five rebounding squads for six consecutive seasons. Liberty led the nation in rebound margin in back-to-back years, 2003-04 and 2004-05.

**First-Half Defense**

Points have come at a premium for Liberty's opponents during the first half this season. The Lady Flames limited Winthrop to 10 first-half markers on Feb. 15, the eighth time Liberty has held its opponent under 20 points in the opening period. The Lady Flames have gone on to win all eight contests.

Only four of Liberty's first 26 opponents have managed to score 30 points during the opening 20 minutes of play. The Lady Flames are yielding an average of just 23.6 points in the first half of games in 2009-10.

**No Triples? No Problem**

Liberty only made one three-pointer during its win over Charleston Southern on Feb. 22, shooting 1-8 from behind the arc. It was the ninth time this season that the Lady Flames have connected on either zero or one triples in a contest. Liberty is 8-1 in those games, despite its lack of three-point shooting.

**70 is the Magic Number**

Liberty is 9-0 this season when scoring at least 70 points in a game, extending a lengthy streak. The Lady Flames have now won 91 consecutive games when reaching the 70-point plateau offensively.

No. 24 Boston College was the most recent team to defeat Liberty when the Lady Flames tallied 70 points. The Eagles dealt the Lady Flames a 74-70 overtime loss, Dec. 6, 2003 at the Brown Classic.

Liberty has not dropped a game when scoring 70 points in regulation since Dec. 4, 2002. That day, the Lady Flames fell at Richmond by an 88-74 count.

## Miscellaneous Stats For the 2009-10 Lady Flames

### Team Scoring Leaders

Devon Brown	14 times
Avery Warley	7 times
Jelena Antic	3 times
Amber Mays	3 times
Kylee Beecher	1 time
Danika Dale	1 time
LaKendra Washington	1 time

### 20-Point Games

Devon Brown	7 times
Avery Warley	3 times
LaKendra Washington	1 time

### Team Rebounding Leaders

Devon Brown	13 times
Avery Warley	11 times
Jelena Antic	3 times
Danika Dale	1 time

### 10-Rebound Games

Devon Brown	11 times
Avery Warley	11 times
Jelena Antic	2 times

### Team Assist Leaders

Amber Mays	17 times
Rachel McLeod	6 times
Devon Brown	4 times
Jelena Antic	3 times
Dymond Morgan	3 times
Kylee Beecher	1 time
Danika Dale	1 time
Avery Warley	1 time

### 5-Assist Games

Amber Mays	9 times
Dymond Morgan	3 times
Rachel McLeod	1 time

### Team Steal Leaders

Devon Brown	10 times
Amber Mays	10 times
LaKendra Washington	7 times
Dymond Morgan	6 times
Kylee Beecher	3 times
Rachel McLeod	3 times
Avery Warley	2 times
Danika Dale	1 time

### 3-Steal Games

Amber Mays	11 times
Devon Brown	10 times
Dymond Morgan	7 times
LaKendra Washington	7 times
Avery Warley	3 times
Jelena Antic	2 times
Danika Dale	2 times
Rachel McLeod	2 times
Kylee Beecher	1 time

### Team Blocked Shot Leaders

Avery Warley	11 times
Devon Brown	10 times
Danika Dale	6 times
Carra Coy	5 times
Kylee Beecher	3 times
LaKendra Washington	2 times
Jelena Antic	1 time
Amber Mays	1 time

### 3-Block Games

Avery Warley	2 times
--------------	---------

*Including Ties*

## Road Winning Streak

Liberty enters Monday's tilt on a six-game road winning streak. The Lady Flames have not lost a game away from the Vines Center since Jan. 2, when they lost, 70-65, at Gardner-Webb.

During the streak, Liberty has outscored its opponents by an average of 20.8 points per game and Avery Warley is averaging a double-double (14.8 ppg, 10.8 rpg).

## Big Wins, Tight Losses

The Lady Flames' 21 victories this season have come by an average of 23.6 points. Liberty's tightest win was a 57-55 home victory over Coastal Carolina on Feb. 20.

Meanwhile, Liberty has lost its five games by a total of 33 points. James Madison posted the widest margin of victory over the Lady Flames, defeating Liberty 60-50, Dec. 1 at the Vines Center.

## Double-Double x 2

Before Jan. 12, the Lady Flames had not seen a pair of players record double-doubles in the same game since Nov. 24, 2007. However, Liberty has accomplished the feat five times in its last 13 games.

**Longwood (Jan. 12):** Jelena Antic (19 pts., 10 rebs.) & Devon Brown (16 pts., 13 rebs.)  
**Coastal Carolina (Jan. 25):** D. Brown (17 pts., 10 rebs.) & A. Warley (15 pts., 12 rebs.)  
**High Point (Jan. 30):** Devon Brown (29 pts., 11 rebs.) & Avery Warley (26 pts., 14 rebs.)  
**Gardner-Webb (Feb. 8):** D. Brown (13 pts., 13 rebs.) & A. Warley (15 pts., 10 rebs.)  
**Charleston So. (Feb. 22):** D. Brown (20 pts., 12 rebs.) & A. Warley (22 pts., 10 rebs.)

## Tournament Tested

Liberty has played in a pair of tournaments this season, the Navy Classic (Nov. 20-21) and the Marriott Cavalier Classic (Dec. 28-29). The Lady Flames won the Navy Classic, while finishing second at this week's Marriott Cavalier Classic.

Liberty has won four regular-season tournament championships during the last three years, a list which also includes the 2008 National City Xavier Invitational, the 2008 UNLV Lady Rebel Christmas Classic and the 2009 Hokie Hardwood Classic.

## Wanted for Theft

Liberty has employed an aggressive, trapping defense this season, helping the Lady Flames pace the Big South with 11.5 steals per contest. Liberty has tallied double-digit steals 19 times in its first 26 games of the year, after doing so only nine times during the entire 2008-09 campaign. Leading the way is senior Amber Mays, who has accounted for 60 of the Lady Flames' 298 thefts.

## The Container is Half Full

This season, the Lady Flames are 10-0, when shooting 50 percent or higher from the field. Liberty is now 69-0 under head coach Carey Green, when the Lady Flames sink at least half of their field goals.

## Painting a Masterpiece

Last season, Liberty regularly controlled the area around the basket, outscoring 29 of 33 opponents in the "points in the paint" statistical category.

This year, the Lady Flames are off to an outstanding start in racking up "points in the paint" once again. Liberty has outscored all 26 opponents inside the paint in 2009-10, by an average margin of 24.2 points (39.9 to 15.7).

## 15 x 10 for No. 40

Redshirt freshman Devon Brown scored 12 points during Saturday's game at UNC Asheville, putting her in double figures for the 15th straight game. Gardner-Webb was the last opponent to hold the Big South's leading scorer under 10 points, limiting Brown to nine tallies on Jan. 2.

2009 graduate Megan Frazee set the school record by scoring in double figures 68 straight times (Jan. 27, 2007 through March 15, 2009).



## Liberty's Record ...

When Liberty controls the tip .....	16-0
When opponent controls the tip.....	5-5
Played at home.....	11-2
Played on the road .....	8-3
Played at a neutral site .....	2-0
Played a team with a .500+ record.....	10-5
Played a team with a .500 record.....	2-0
Played a team with a below .500 record.....	9-0
When Liberty leads at the half .....	18-1
When opponent leads at the half.....	3-3
When there is a tie at the half.....	0-1
When Liberty leads with 5:00 left.....	21-1
When opponent leads with 5:00 left .....	0-4
When there is a tie with 5:00 left .....	0-0
When Liberty leads with 1:00 left.....	21-0
When opponent leads with 1:00 left .....	0-4
When there is a tie with 1:00 left .....	0-1
When Liberty outrebounds opponent .....	21-4
When opponent outrebounds Liberty .....	0-1
When the teams' rebound totals are equal...	0-0
When Liberty shoots 50% or better (FG)....	10-0
When Liberty shoots less than 50% (FG)...	11-5
When Liberty outshoots its opponents .....	19-2
When opponents outshoot Liberty .....	2-3
When the teams shoot the same pct .....	0-0
When Liberty shoots more 3-pointers.....	4-1
When opponent shoots more 3-pointers .....	17-4
When same amount of 3-pointers shot.....	0-0
When Liberty shoots more free throws.....	19-1
When opponent shoots more free throws.....	2-4
When same number of free throws taken.....	0-0
When opponent shoots 50% or better (FG)...	0-1
When opponent shoots less than 50% (FG)...	21-4
When Liberty has more turnovers .....	7-3
When opponent has more turnovers .....	11-2
When turnovers are the same .....	3-0
When Liberty blocks more shots .....	12-2
When opponent blocks more shots .....	5-2
When blocks are the same .....	4-1
When Liberty has more steals .....	17-4
When opponent has more steals.....	3-1
When steals are the same.....	1-0
When Liberty bench outscores opponent...	14-1
When opponent bench outscores Liberty .....	7-4
When both benches score the same .....	0-0
When Liberty scores 50 or fewer points .....	0-1
When Liberty scores 51-60 points .....	6-2
When Liberty scores 61-70 points .....	7-2
When Liberty scores 71-80 points .....	4-0
When Liberty scores 81 or more points.....	4-0
When the game is decided by 1-5 points .....	1-2
When the game is decided by 6-10 points .....	2-3
When the game is decided by 11+ points...	18-0
November Games .....	5-0
December Games .....	2-3
January Games .....	8-1
February Games.....	6-1
March Games .....	0-0
Sunday .....	0-0
Monday .....	6-1
Tuesday.....	3-3
Wednesday.....	0-0
Thursday.....	1-0
Friday.....	2-0
Saturday .....	9-1
When wearing white uniforms .....	13-2
When wearing red uniforms.....	2-0
When wearing blue uniforms.....	6-3

## All-Time Winningest Coaches

Through 10 seasons at Liberty, head coach Carey Green remains in elite company. He ranks as the ninth-winningest NCAA Division I women's basketball coach of all time, entering the 2009-10 campaign with a .755 career winning percentage. Here is a look at the top 15 coaches on the all-time list.

Coach, Team(s)	Yrs.	Won	Lost	Pct.
1) Leon Barmore, Louisiana Tech	20	576	87	.867
2) Geno Auriemma, Connecticut	24	696	122	.851
3) Pat Summitt, Tennessee	35	1,005	193	.839
4) Tara VanDerveer, Idaho, Ohio St., Stanford	30	757	193	.797
5) Bill Sheahan, Mt. St. Mary's	17	372	104	.782
6) Robin Selvig, Montana	31	725	204	.780
7) Gail Goestenkors, Duke, Texas	17	439	124	.780
8) Wes Moore, Maryville, F. Marion, Chattanooga	20	466	132	.779
<b>9) Carey Green, Liberty</b>	<b>10</b>	<b>237</b>	<b>77</b>	<b>.755</b>
10) Andy Landers, Georgia	30	725	239	.752
11) Marsha Sharp, Texas Tech	24	571	189	.751
12) C. Vivian Stringer, Cheyney, Iowa, Rutgers	38	825	280	.747
13) Jody Conradt, Sam Houston St., UTA, Texas	38	900	309	.744
14) Sylvia Hatchell, F. Marion, North Carolina	34	812	282	.742
15) Van Chancellor, Mississippi, LSU	21	489	171	.741

## Longest-Tenured Assistant Coaches

The 2009-10 season is Heather Stephens' seventh campaign as an assistant coach on Carey Green's coaching staff. This season, she snapped a tie with Jeri (Wiley) Porter as the longest-tenured assistant coach in Liberty women's basketball history. Porter is now the head coach at George Mason.

The Lady Flames have gone 167-50 and won five Big South titles during Stephens' tenure and made the "Sweet 16" of the 2005 NCAA Tournament.

## Same Number, New Face

A new Lady Flame is wearing No. 40 this year, after Megan Frazee donned the number for the last four seasons. Among many other accomplishments and accolades, Frazee graduated as the No. 2 scorer (1,883 points) and No. 3 rebounder (951 rebounds) in program history, leaving some very big shoes to fill.

Liberty's new No. 40, Devon Brown, has worn the number proudly so far. The redshirt freshman from Waynesboro, Va. is averaging a Big South-high 16.5 ppg and 8.7 rpg, pacing the Lady Flames in both categories. No freshman has finished the year as the conference's leading scorer since Liberty's Elena Kisseleva in 1996-97.

## Tallest Since Feenstra

Carra Coy, one of three new freshmen on this year's team, stands 6-6. That makes the Summerville, S.C., native the tallest Lady Flame since 6-8 Katie Feenstra graduated after the 2004-05 campaign.

## International Flavor

Freshman Jelena Antic hails from Skopje, Macedonia and sophomore Tolu Omotola was born in London, England, giving Liberty international players on its roster for the 16th consecutive season. The last time the Lady Flames' roster consisted solely of American-born players was the 1993-94 campaign. Every Carey Green-coached team at Liberty has featured at least one international player.

## Local Flavor

Even though Jelena Antic was born in Macedonia, she played high school basketball at Liberty Christian Academy in Lynchburg, Va. She is one of four current Lady Flames who attended high school within 70 miles of the Liberty campus, joining Kylee Beecher (Hidden Valley), Devon Brown (Waynesboro) and Brittany Campbell (Brookville).

## Top 50 Scorers in Liberty History

1. Elena Kisseleva	2,154
2. Megan Frazee	1,883
3. Katie Feenstra	1,845
4. Sharon Wilkerson	1,733
5. Sarah Wilkerson	1,331
6. Ginny Holloway	1,180
7. Sharon Snodgrass	1,169
8. Kristal Tharp	1,161
9. Moriah Frazee	1,147
10. Pam Wilder	1,120
11. Brenda Gunsallus	1,078
12. Cynthia Thomson	1,055
13. Dawn Coleman	908
14. Daina Staugaitiene	846
15. Sandra Bridges	822
16. Reggie Gomes	810
17. Kristi Mercer	809
18. Lil Cooper	808
19. Michelle Fricke	803
20. Stacey White	801
21. Malynda Keck	792
22. Sheila Ford	761
23. Pam Stanfield	752
24. Michelle Wyms	748
25. Sharon Freet	727
26. Jeri Wiley	717
27. Annetta Paraham	705
28. Trish Harris	697
29. Allyson Fasnacht	672
30. Courtney Watkins	669
31. Rachel Hammond	663
32. Harriett Blair	651
33. Meribeth Feenstra	628
34. Monique Leonard	624
35. Rachel Young	610
36. Kristina Palaimaite	600
37. Carla Weaver	594
38. Theresa Bream	589
39. Anna Barrington	579
40. Molly Frazee	571
41. Missy Roberts	560
42T. Erin Wall	551
<b>42T. Avery Warley</b>	<b>551</b>
44T. Beth Ralph	547
44T. Irene Sloof	547
46. Angie Johnson	545
47. Kathy Wooten	543
48. Stephanie Walker	524
49. Jennifer Fairfax	513
50. Trena Criss	509

### Other Current Players:

Amber Mays	464
Devon Brown	430
Rachel McLeod	393

## Gaining Some National Recognition

Liberty earned a single vote in the most recent ESPN/USA Today Coaches Top 25 Poll, released on Dec. 8, marking the second straight week the Lady Flames received a vote.

Liberty also collected one vote in the AP Top 25 Poll, released on Nov. 30.

## Turning Up the Heat in the Furnace

The 2009-10 campaign is the 18th season the Liberty women's basketball team has called the Vines Center its full-time home. The "Furnace" has served as a favorable venue for the Lady Flames over the years. Liberty is 199-53 (.790) all-time at the Vines Center, including 10-2 last season.

The Lady Flames are 11-2 to start this year's 15-game home schedule and are 107-11 in their last 118 home games, dating back to the 2001-02 season.

## Corralling the Caroms

Liberty has ranked among the nation's top five teams in rebounding margin for six consecutive seasons, including a No. 2 listing in 2008-09. Even though two of the top three rebounders from last year's squad graduated, the Lady Flames have hit the boards hard again this season.

Liberty has won the rebounding battle in 25 of its first 26 games this season, by a nation-high average of 14.6 boards per contest. Leading the way are redshirt freshman Devon Brown (8.7 rpg) and redshirt sophomore Avery Warley (8.5 rpg).

## Lack of Overtime

Liberty has played only one overtime game in its last 205 outings, a 64-62 setback at High Point on Jan. 20, 2007. Since that contest at the Millis Center, the Lady Flames have played 104 consecutive games without needing extra time. No players on Liberty's current roster have competed in an overtime game with the Lady Flames.

The Lady Flames' most recent overtime victory came on Jan. 6, 2004, when Liberty defeated American, 76-72, on the road in double overtime.

Liberty's most recent overtime contest at the Vines Center was a memorable one. The Lady Flames defeated Virginia, 77-69, in overtime on Nov. 26, 2002, to claim their first-ever win over the Cavaliers. It also marked Liberty's first win over a ranked opponent, as Virginia entered the game with a No. 25 national ranking.

## Big Shoes to Fill

Seven seniors graduated from last year's Liberty team, which went 24-9 and won its second consecutive Big South title. Alexandria Bream, Megan Frazee, Molly Frazee, Moriah Frazee, Rachel Hammond, Rebecca Lightfoot and Jessica Nelson accounted for 57.0 percent of the Lady Flames' points and 41.7 percent of the team's rebounds in 2008-09.

Headlining the group was Megan Frazee, who claimed the Big South Player of the Year and Big South Championship MVP awards.

## Youth will be Served

Underclassmen have stepped up to fill the void left by the seven seniors who graduated from the 2008-09 Liberty roster. Through the first 26 games of the 2009-10 campaign, the Lady Flames' freshmen and sophomores are accounting for 73.8 percent of the team's points and 75.5 percent of Liberty's rebounds.

The Lady Flames' top five rebounders are all either freshmen or sophomores, as are four of their top five scorers.

## There is Only One

Starting point guard Amber Mays is the only senior on this year's team roster. Liberty has not had so few seniors since the 2005-06 Lady Flames played the season without a single senior.

Mays has played well during her final collegiate campaign, leading the Lady Flames in assists (4.0 apg) and steals (2.3 apg), while ranking third in both field goal percentage (.537) and scoring (8.4 ppg).



## Top 50 Rebounders in Liberty History

1. Katie Feenstra	1,033
2. Sharon Snodgrass	1,026
3. Megan Frazee	951
4. Elena Kisseleva	876
5. Carla Weaver	859
6. Sharon Wilkerson	625
7. Moriah Frazee	601
8. Sharon Freet	590
9. Kristina Palaimaite	586
10. Pam Stanfield	583
11. Lil Cooper	578
12. Annetta Paraham	556
13. Meribeth Feenstra	547
14. Theresa Bream	536
15. Jennifer Fairfax	533
16T. Wendy Johnson	532
16T. Malynda Keck	532
18. Pam Wilder	529
19. Kathy Wooten	504
20. Michelle Fricke	500
21. Helen Gomes	493
22. Trish Harris	484
23. Flori Willie	478
<b>24. Avery Warley</b>	<b>477</b>
25. Michelle Wyrms	472
26. Kristal Tharp	466
27. Stacey White	456
28. Lynn Beardslee	450
29. Karolina Piotrkiewicz	445
30. Sarah Wilkerson	442
31. Erin Wall	423
32T. Ginny Holloway	420
32T. Daina Staugaitiene	420
34. Dawn Coleman	405
35. Jayne Mottershead	401
36. Sheila Ford	395
37. Angie Johnson	389
38. Trena Criss	370
39. Erma Williams	357
40. Rebecca Lightfoot	351
41. Courtney Watkins	327
42. Crystal Peace	320
43. Molly Frazee	319
44. Monique Leonard	315
45. Harriett Blair	310
46. Reggie Gomes	308
47. Jamie Feagin	303
48. Rachel Young	301
49. Roli-Ann Nikagbatse	296
50T. Rachel Hammond	287
50T. Beth Ralph	287

### Other Current Players:

Kylee Beecher	248
Devon Brown	225
Rachel McLeod	185

## A Tale of Two Halves

Liberty has regularly stepped up its level of play during the second half this season. The Lady Flames are outscoring opponents by an average score of 35.4-25.3 during the final 20 minutes of play, thus far this season.

Liberty is shooting .495 from the field after halftime, while limiting opponents to a .333 second-half field goal percentage.

## Furious Comeback

The Lady Flames fell behind Navy, 20-4, 7:56 into the Navy Classic championship game on Nov. 21. Liberty then outscored the host Midshipmen, 51-23, during the remainder of the game to claim an improbable 55-43 victory.

It was the Lady Flames' largest comeback since Nov. 27, 2001, in a matchup with VCU at the Vines Center. The Rams owned a 38-22 advantage with 18:41 remaining in the second half, before the Lady Flames rallied for a 65-60 victory.

## Furious Comeback, The Sequel

Liberty trailed host Coastal Carolina, 28-18, with 17 minutes remaining in their game on Jan. 25. The Lady Flames then outscored the Chanticleers by a 39-10 count the rest of the way, closing out their 57-38 with a game-ending 24-2 run.

## Darlings of Defense

Strong defense has been a staple of all Carey Green-coached teams at Liberty, but this year's team has been one of his best defensive squads. Below is a comparison between the 2009-10 Lady Flames' defensive statistics and the existing school records.

*Statistic: 2009-10 average (school record)*

*Opponent Points per Game: 48.9 ppg (52.6 ppg in 2008-09)*

*Opponent Field Goal Percentage: .346 (.328 in 2004-05)*

*Steals: 298/11.5 per game (347/11.2 per game in 1999-2000)*

## Warley Wins

Redshirt sophomore forward Avery Warley averaged 16.5 ppg and 14.0 rpg as Liberty went 2-0 on its annual South Carolina "Beach Trip." As a result, she earned the first Big South Player of the Week award of her career on Jan. 26.

## Antic Repeats

Jelena Antic claimed her second consecutive Big South Freshman of the Week certificate on Jan. 19, after averaging 13.3 ppg and 5.7 rpg in a trio of Liberty victories.

She is the first Lady Flame to win back-to-back Big South Freshman of the Week honors since Feb. 12 and 19, 2002, when Kristal Tharp accomplished the feat.

## Freshman of the Week

LaKendra Washington's 21-point, four-steal performance at Lafayette on Nov. 28 was recognized by the Big South Conference on Dec. 1. The freshman guard was named the Big South Freshman of the Week, marking the second consecutive week a Liberty rookie was honored by the Big South.

## First Since Frazee

After averaging 21.0 ppg and 10.7 rpg during Liberty's 3-0 week, Devon Brown was honored as Big South Player of the Week on Nov. 24. She became the first Lady Flames freshman to win the award since Megan Frazee captured it twice during her rookie season (Dec. 5, 2005 & Jan. 16, 2006).

## National Statistical Rankings

Through the contests of Feb. 25, the Lady Flames were ranked among the NCAA's top 15 teams in seven statistical categories. At that juncture, Liberty sat No. 1 in rebound margin (+14.8), No. 2 in scoring defense (48.2 ppg), No. 4 in field goal percentage (.477), No. 5 in field goal percentage defense (.341), No. 9 in three-point field goal percentage defense (.274), No. 11 in scoring margin (+17.4) and No. 14 in steals per game (11.3 spg).

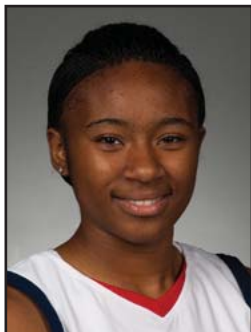
## Liberty's 2009-10 Starting Lineups

Game	Date	Opponent	Result	Guard	Guard	Guard	Forward	Forward	Record
1	Nov. 13	WSSU	W, 71-26	Mays	McLeod	Brown	Beecher	Warley	1-0
2	Nov. 17	UNCG	W, 60-42	Mays	McLeod	Brown	Beecher	Warley	2-0
3	Nov. 20	Tulane	W, 63-52	Mays	McLeod	Brown	Beecher	Warley	3-0
4	Nov. 21	Navy	W, 55-43	Mays	McLeod	Brown	Beecher	Warley	4-0
5	Nov. 28	Lafayette	W, 90-55	Mays	McLeod	Brown	Beecher	Warley	5-0
6	Dec. 1	JMU	L, 50-60	Mays	McLeod	Brown	Beecher	Warley	5-1
7	Dec. 5	Glennville St.	W, 86-45	Mays	McLeod	Brown	Beecher	Warley	6-1
8	Dec. 15	Auburn	L, 64-70	Mays	McLeod	Brown	Beecher	Warley	6-2
9	Dec. 28	Cornell	W, 70-40	Mays	McLeod	Brown	Antic	Warley	1-0
10	Dec. 29	Virginia	L, 54-63	Mays	McLeod	Brown	Antic	Warley	1-1
11	Jan. 2	G.-Webb	L, 65-70	Mays	McLeod	Brown	Antic	Warley	1-2
12	Jan. 5	N.C. A&T	W, 57-51	Mays	McLeod	Brown	Antic	Warley	2-2
13	Jan. 9	Winthrop	W, 67-38	Mays	McLeod	Brown	Antic	Warley	3-2
14	Jan. 12	Longwood	W, 78-55	Mays	McLeod	Brown	Antic	Warley	4-2
15	Jan. 16	Presbyterian	W, 73-27	Mays	McLeod	Brown	Antic	Warley	5-2
16	Jan. 18	UNCA	W, 82-40	Mays	McLeod	Brown	Antic	Warley	6-2
17	Jan. 23	CSU	W, 65-52	Mays	McLeod	Brown	Beecher	Warley	7-2
18	Jan. 25	Coastal Car.	W, 57-38	Mays	McLeod	Brown	Beecher	Warley	8-2
19	Jan. 30	High Point	W, 75-62	Mays	McLeod	Brown	Beecher	Warley	9-2
20	Feb. 1	Radford	W, 63-45	Mays	McLeod	Brown	Beecher	Warley	10-2
21	Feb. 4	N.C. Central	W, 64-44	Mays	McLeod	Brown	Beecher	Warley	11-2
22	Feb. 8	G.-Webb	L, 56-59	Mays	McLeod	Brown	Beecher	Warley	11-3
23	Feb. 15	Winthrop	W, 52-18	Mays	McLeod	Brown	Beecher	Warley	12-3
24	Feb. 20	Coastal Car.	W, 57-55	Mays	McLeod	Brown	Beecher	Warley	13-3
25	Feb. 22	CSU	W, 66-56	Mays	McLeod	Brown	Beecher	Warley	14-3
26	Feb. 27	UNCA	W, 94-66	Mays	McLeod	Brown	Beecher	Warley	15-3

## Miscellaneous Stats

Date	Opponent	LU Result	LU Big				Opp Big			LC	LU in			Opp in		Paint		Off TOs		2nd Ch		Bench	
			Lead	Lead	Ties	LC	Lead	Lead	Tied		Lead	Lead	Tied	LU	Opp	LU	Opp	LU	Opp	LU	Opp		
Nov. 13	Winston-Salem State	W, 71-26	45	0	0	0	38:11	0:00	1:49	38	12	35	10	13	7	18	15						
Nov. 17	UNC Greensboro	W, 60-42	19	2	1	1	35:17	0:18	4:25	40	10	18	14	9	9	10	17						
Nov. 20	Tulane	W, 63-52	20	2	1	1	37:33	1:16	1:11	34	18	23	18	9	2	11	9						
Nov. 21	Navy	W, 55-43	12	16	0	1	12:24	26:56	0:40	26	12	16	12	16	6	8	11						
Nov. 28	Lafayette	W, 90-55	36	0	0	0	39:41	0:00	0:19	64	16	38	22	23	6	34	10						
Dec. 1	James Madison	L, 50-60	2	15	1	1	1:53	35:58	2:09	30	24	10	12	13	12	6	19						
Dec. 5	Glennville State	W, 86-45	42	0	0	0	39:56	0:00	0:04	64	10	19	17	15	16	34	20						
Dec. 15	Auburn	L, 64-70	2	14	2	4	0:54	37:50	1:16	42	20	16	11	6	16	8	25						
Dec. 28	Cornell	W, 70-40	36	0	0	0	39:48	0:00	0:12	44	6	22	12	15	6	24	9						
Dec. 29	No. 21/23 Virginia	L, 54-63	6	11	6	17	15:09	21:19	3:32	36	28	14	35	14	7	16	21						
Jan. 2	Gardner-Webb	L, 65-70	0	13	4	0	0:00	37:52	2:08	34	20	13	21	10	5	20	17						
Jan. 5	North Carolina A&T	W, 57-51	14	2	1	2	37:12	1:21	1:27	32	18	21	20	17	0	9	7						
Jan. 9	Winthrop	W, 67-38	35	7	2	3	30:52	5:41	3:27	34	12	29	8	10	2	25	21						
Jan. 12	Longwood	W, 78-55	24	0	0	0	39:24	0:00	0:36	54	18	27	24	19	11	19	26						
Jan. 16	Presbyterian	W, 73-27	49	0	0	0	39:45	0:00	0:15	38	12	39	6	7	4	21	12						
Jan. 18	UNC Asheville	W, 82-40	46	0	2	0	37:08	0:00	2:52	38	12	33	12	23	11	33	11						
Jan. 23	Charleston Southern	W, 65-52	18	0	0	0	39:56	0:00	0:04	48	6	13	19	16	7	9	18						
Jan. 25	Coastal Carolina	W, 57-38	19	10	5	7	17:01	17:44	5:15	20	8	25	6	18	5	9	6						
Jan. 30	High Point	W, 75-62	13	9	10	11	13:29	20:16	6:15	42	22	16	9	16	2	8	21						
Feb. 1	Radford	W, 63-45	18	2	2	1	36:57	1:12	1:51	36	12	27	13	10	14	7	17						
Feb. 4	N.C. Central	W, 64-44	20	0	0	0	39:08	0:00	0:52	42	22	17	13	20	8	21	17						
Feb. 8	Gardner-Webb	L, 56-59	9	6	2	8	26:46	10:47	2:27	34	30	18	15	15	5	9	11						
Feb. 15	Winthrop	W, 52-18	34	0	0	0	38:42	0:00	1:18	30	8	19	7	11	0	20	13						
Feb. 20	Coastal Carolina	W, 57-55	12	5	2	2	35:46	2:33	1:41	44	12	16	19	5	5	17	5						
Feb. 22	Charleston Southern	W, 66-56	17	2	4	6	33:59	3:55	2:06	44	16	29	23	22	6	10	18						
Feb. 27	UNC Asheville	W, 94-66	33	1	2	4	38:39	0:26	0:55	50	23	42	15	22	4	40	24						

## 2009-10 Game-By-Game Statistics



**# 1**  
**LaKendra**  
**Washington**  
*5-8 Freshman Guard*  
*Milwaukee, Wis.*  
*The Hope School*

### Season/Career Highs

**Points - 21**  
*at Lafayette (11-28-09)*  
**FG Made - 9**  
*at Lafayette (11-28-09)*  
**FG Attempts - 12 (Two times)**  
*Most recently, at Lafayette (11-28-09)*  
**3FG Made - 2 (Three times)**  
*Most recently, vs. NCCU (02-04-10)*  
**3FG Attempts - 6**  
*vs. Winston-Salem State (11-13-09)*  
**FT Made - 2 (Three times)**  
*Most recently, at Lafayette (11-28-09)*  
**FT Attempts - 4 (Two times)**  
*Most recently, at Lafayette (11-28-09)*  
**Rebounds - 5 (Three times)**  
*Most recently, at Virginia (12-29-09)*  
**Assists - 4**  
*at UNC Asheville (02-27-10)*  
**Steals - 5**  
*vs. Winston-Salem State (11-13-09)*  
**Blocks - 1 (Three times)**  
*Most recently, vs. NCCU (02-04-10)*

OPPONENT	DATE	MIN	FG-FGA	3FG-FGA	FT-FTA	OFF-DEF-TOT	A	TO	BLK	STL	PTS
Winston-Salem St.	11-13-09	22	4-12	1-6	0-0	0-2-2	1	3	0	5	9
UNC Greensboro	11-17-09	9	0-2	0-2	2-2	0-0-0	0	0	0	1	2
Tulane	11-20-09	10	1-2	0-1	0-0	0-1-1	0	2	1	0	2
Navy	11-21-09	15	2-3	0-0	2-4	0-4-4	0	1	0	0	6
Lafayette	11-28-09	26	9-12	1-2	2-4	0-0-0	2	1	0	4	21
James Madison	12-01-09	8	1-4	0-0	0-0	1-0-1	0	0	0	0	2
Glenville St.	12-05-09	20	4-9	0-0	0-0	1-4-5	2	5	0	2	8
Auburn	12-15-09	11	1-3	0-1	0-0	0-1-1	0	0	0	0	2
Cornell	12-28-09	21	4-10	0-3	1-2	1-4-5	2	3	1	2	9
Virginia	12-29-09	15	2-4	0-0	1-1	3-2-5	1	3	0	2	5
Gardner-Webb	01-02-10	7	0-2	0-0	0-0	0-0-0	0	0	0	1	0
N.C. A&T	01-05-10	14	0-4	0-1	0-0	1-1-2	0	2	0	0	0
Winthrop	01-09-10	17	2-5	1-2	0-0	1-0-1	1	1	0	3	5
Longwood	01-12-10	8	0-2	0-2	1-2	2-0-2	1	4	0	0	1
Presbyterian	01-16-10	20	3-5	0-2	0-0	1-2-3	0	5	0	2	6
UNC Asheville	01-18-10	16	2-6	2-4	0-3	1-0-1	0	2	0	4	6
Charleston So.	01-23-10	13	2-3	0-1	0-0	0-1-1	0	0	0	1	4
Coastal Carolina	01-25-10	12	2-3	2-2	1-2	0-1-1	0	0	0	0	7
High Point	01-30-10	3	0-0	0-0	0-0	0-0-0	0	0	0	0	0
Radford	02-01-10	18	0-0	0-0	0-0	0-0-0	1	3	0	0	0
N.C. Central	02-04-10	21	2-3	2-3	0-0	1-1-2	2	4	1	3	6
Gardner-Webb	02-08-10	4	0-0	0-0	0-0	0-0-0	1	0	0	0	0
Winthrop	02-15-10	17	1-1	0-0	0-1	1-1-2	1	2	0	3	2
Coastal Carolina	02-20-10	12	2-3	0-1	0-0	0-1-1	0	0	0	0	4
Charleston So.	02-22-10	5	0-0	0-0	0-0	1-0-1	0	1	0	0	0
UNC Asheville	02-27-10	23	5-9	1-3	1-2	0-0-0	4	0	0	3	12

## 2009-10 Notes/Highlights

- Tabbed Big South Freshman of the Week on Dec. 1.
- Became Liberty's first true freshman to score 20 points in a game since Megan Frazee during the 2005-06 season, when she exploded for 21 points at Lafayette on Nov. 28.
- Has made seven of her last 14 triples, after making only three of 22 three-point attempts during the season's first 15 games.
- Liberty has scored 90 or more points both times she has tallied double-digit points this season.

## Career Stats

Season	GP	GS	Min	Avg	FG	FGA	Pct	3FG	3FGA	Pct	FT	FTA	Pct	ORB	DRB	TOT	Avg	Asst	TO	Blk	Stl	Pts	Avg
2009-10	26	0	367	14.1	49	107	.458	10	36	.278	11	23	.478	15	26	41	1.6	19	42	3	36	119	4.6





**# 11**

**Jelena Antic**

*6-2 Freshman G/F*

*Skopje, Macedonia*

*Liberty Christian Academy*

**Season/Career Highs**

**Points - 19**

*vs. Longwood (01-12-10)*

**FG Made - 8**

*vs. Longwood (01-12-10)*

**FG Attempts - 11**

*vs. Longwood (01-12-10)*

**3FG Made - 2**

*at Gardner-Webb (01-02-10)*

**3FG Attempts - 3**

*at Auburn (12-15-09)*

**FT Made - 6**

*vs. North Carolina A&T (01-05-10)*

**FT Attempts - 7**

*vs. North Carolina A&T (01-05-10)*

**Rebounds - 10 (Two times)**

*Most recently, vs. Longwood (01-12-10)*

**Assists - 4**

*vs. North Carolina A&T (01-05-10)*

**Steals - 3 (Two times)**

*Most recently, vs. Presby. (01-16-10)*

**Blocks - 1 (Two times)**

*Most recently, vs. N.C. A&T (01-05-10)*

**2009-10 Game-By-Game Statistics**

OPPONENT	DATE	MIN	FG-FGA	3FG-FGA	FT-FTA	OFF-DEF-TOT	A	TO	BLK	STL	PTS
Winston-Salem St.	11-13-09					Did not play					
UNC Greensboro	11-17-09					Did not play					
Tulane	11-20-09					Did not play					
Navy	11-21-09	18	0-4	0-0	0-1	4-1-5	3	1	0	0	0
Lafayette	11-28-09	23	2-5	0-0	0-1	2-2-4	2	2	0	3	4
James Madison	12-01-09	12	0-3	0-1	1-2	0-4-4	0	2	0	0	1
Glenville St.	12-05-09	24	5-8	0-0	2-4	2-8-10	0	6	0	1	12
Auburn	12-15-09	23	2-8	0-3	0-0	2-1-3	1	3	0	1	4
Cornell	12-28-09	21	4-5	1-1	2-2	4-4-8	2	1	0	0	11
Virginia	12-29-09	34	2-7	1-1	0-0	3-0-3	3	1	1	0	5
Gardner-Webb	01-02-10	25	4-6	2-2	0-0	3-2-5	1	1	0	0	10
N.C. A&T	01-05-10	29	4-8	0-0	6-7	1-3-4	4	3	1	1	14
Winthrop	01-09-10	27	4-7	0-1	1-1	3-3-6	1	3	0	1	9
Longwood	01-12-10	30	8-11	0-0	3-5	5-5-10	2	5	0	2	19
Presbyterian	01-16-10	24	7-7	0-0	0-0	1-2-3	1	3	0	3	14
UNC Asheville	01-18-10	18	3-5	1-1	0-0	4-0-4	0	3	0	0	7
Charleston So.	01-23-10					Did not play					
Coastal Carolina	01-25-10					Did not play					
High Point	01-30-10					Did not play					
Radford	02-01-10					Did not play					
N.C. Central	02-04-10					Did not play					
Gardner-Webb	02-08-10					Did not play					
Winthrop	02-15-10					Did not play					
Coastal Carolina	02-20-10	20	0-2	0-1	2-4	1-2-3	1	2	0	2	2
Charleston So.	02-22-10	19	2-4	0-0	0-2	2-4-6	3	3	0	1	4
UNC Asheville	02-27-10	24	6-8	1-1	0-0	4-1-5	2	1	0	1	13

**2009-10 Notes/Highlights**

-- Returned to action versus Coastal Carolina on Feb. 20, after missing seven games due to a leg injury.

-- Won her second consecutive Big South Freshman of the Week award on Jan. 19, after contributing 13.3 ppg and 5.7 rpg, while shooting 78.3 percent (18-of-23) from the field, during Liberty's 3-0 week.

-- Liberty's first player to win consecutive Big South Freshman of the Week honors since Kristal Tharp did so Feb. 12 and 19, 2002.

-- Previously named Big South Freshman of the Week on Jan. 12, after posting 11.0 ppg, 5.0 rpg and 2.5 apg during wins over North Carolina A&T and Winthrop.

-- Made her first appearance in the starting lineup, Dec. 28 versus Cornell.

-- Has made 21 of her last 29 field goal attempts (.724), dating back to the second half of the Longwood game (Jan. 12).

-- Has connected on six of her last eight three-pointers (.750), dating back to a Dec. 28 victory over Cornell.

**Career Stats**

Season	GP	GS	Min	Avg	FG	FGA	Pct	3FG	3FGA	Pct	FT	FTA	Pct	ORB	DRB	TOT	Avg	Asst	TO	Blk	Stl	Pts	Avg
2009-10	16	8	371	23.2	53	98	.541	6	12	.500	17	29	.586	41	42	83	5.2	26	40	2	16	129	8.1



**# 12**

**Danika Dale**

*6-1 Sophomore G/F  
Fort Hood, Texas  
Shoemaker HS*

**Season Highs**

**Points - 15**  
vs. N.C. Central (02-04-10)  
**FG Made - 5**  
vs. N.C. Central (02-04-10)  
**FG Attempts - 8**  
at Winthrop (02-15-10)  
**3FG Made - 2**  
at UNC Asheville (02-27-10)  
**3FG Attempts - 3 (Three times)**  
Most recently, at UNCA (02-27-10)  
**FT Made - 5**  
vs. N.C. Central (02-04-10)  
**FT Attempts - 8**  
vs. N.C. Central (02-04-10)  
**Rebounds - 9**  
vs. Glenville State (12-05-09)  
**Assists - 3 (Four times)**  
Most recently, at UNCA (02-27-10)  
**Steals - 3 (Two times)**  
Most recently, vs. Glen. St. (12-05-09)  
**Blocks - 2 (Four times)**  
Most recently, at Radford (02-01-10)

**Career Highs**

**Points - 15**  
vs. N.C. Central (02-04-10)  
**FG Made - 5**  
vs. N.C. Central (02-04-10)  
**FG Attempts - 8**  
at Winthrop (02-15-10)  
**3FG Made - 2 (Two times)**  
Most recently, at UNCA (02-27-10)  
**3FG Attempts - 3 (Five times)**  
Most recently, at UNCA (02-27-10)  
**FT Made - 5**  
vs. N.C. Central (02-04-10)  
**FT Attempts - 9**  
vs. Saint Paul's (12-13-08)  
**Rebounds - 9**  
vs. Glenville State (12-05-09)  
**Assists - 6**  
vs. Presbyterian (03-02-09)  
**Steals - 4**  
vs. Saint Paul's (12-13-08)  
**Blocks - 2 (Four times)**  
Most recently, at Radford (02-01-10)

**2009-10 Game-By-Game Statistics**

OPPONENT	DATE	MIN	FG-FGA	3FG-FGA	FT-FTA	OFF-DEF-TOT	A	TO	BLK	STL	PTS
Winston-Salem St.	11-13-09	23	1-5	0-2	4-4	2-5-7	3	3	2	3	6
UNC Greensboro	11-17-09	16	0-3	0-0	0-0	1-3-4	0	1	2	2	0
Tulane	11-20-09	11	0-1	0-0	0-0	1-0-1	1	1	0	2	0
Navy	11-21-09	3	0-2	0-2	0-0	1-1-2	1	0	0	0	0
Lafayette	11-28-09	15	2-2	1-1	1-2	0-4-4	1	0	0	0	6
James Madison	12-01-09	21	1-4	1-1	0-0	0-5-5	1	2	2	0	3
Glenville St.	12-05-09	19	2-3	0-0	2-3	1-8-9	3	4	0	3	6
Auburn	12-15-09	4	0-1	0-0	0-0	0-0-0	0	1	0	0	0
Cornell	12-28-09	19	2-4	0-1	1-2	3-4-7	2	0	0	0	5
Virginia	12-29-09	14	1-6	0-3	1-2	1-3-4	0	4	0	0	3
Gardner-Webb	01-02-10	12	4-5	1-2	1-2	0-0-0	1	2	0	0	10
N.C. A&T	01-05-10	10	1-2	0-0	0-1	0-2-2	1	2	0	0	2
Winthrop	01-09-10	20	2-3	0-1	0-0	2-3-5	3	1	0	1	4
Longwood	01-12-10	9	1-3	0-1	0-0	2-2-4	1	1	0	1	2
Presbyterian	01-16-10	18	2-6	1-3	0-0	2-3-5	1	3	0	1	5
UNC Asheville	01-18-10	12	2-4	0-1	1-1	2-1-3	1	2	1	1	5
Charleston So.	01-23-10	19	1-4	0-1	1-2	2-2-4	2	3	0	1	3
Coastal Carolina	01-25-10	24	0-2	0-0	0-0	0-4-4	2	1	1	2	0
High Point	01-30-10	21	0-2	0-0	2-2	1-1-2	0	0	0	1	2
Radford	02-01-10	20	1-2	0-0	0-0	0-1-1	0	1	2	1	2
N.C. Central	02-04-10	23	5-7	0-0	5-8	2-1-3	2	3	1	0	15
Gardner-Webb	02-08-10	21	2-3	1-1	1-1	0-0-0	0	1	0	0	6
Winthrop	02-15-10	23	4-8	0-0	3-3	1-4-5	0	5	0	0	11
Coastal Carolina	02-20-10	12	1-1	0-0	3-4	0-0-0	0	0	0	0	5
Charleston So.	02-22-10	9	0-0	0-0	1-2	0-0-0	0	0	0	0	1
UNC Asheville	02-27-10	19	3-6	2-3	2-7	1-3-4	3	3	0	1	10

**2009-10 Notes/Highlights**

**Career Stats**

Season	GP	GS	Min	Avg	FG	FGA	Pct	3FG	3FGA	Pct	FT	FTA	Pct	ORB	DRB	TOT	Avg	Asst	TO	Blk	Stl	Pts	Avg
2008-09	26	0	254	9.8	16	45	.356	3	15	.200	8	18	.444	10	33	43	1.7	21	27	2	12	43	1.7
2009-10	26	0	417	16.0	38	89	.427	7	23	.304	29	46	.630	25	60	85	3.3	29	44	11	20	112	4.3
TOTAL	52	0	671	12.9	54	134	.403	10	38	.263	37	64	.578	35	93	128	2.5	50	71	13	32	155	3.0



**# 15**

**Kylee Beecher**  
*6-4 Sophomore F*  
*Roanoke, Va.*  
*Hidden Valley HS*

**Season Highs**

**Points - 14 (Two times)**

*Most recently, vs. UNCA (01-18-10)*

**FG Made - 7**

*vs. Glenville State (12-05-09)*

**FG Attempts - 9**

*at Charleston So. (01-23-10)*

**3FG Made - 1**

*at Winthrop (02-15-10)*

**3FG Attempts - 2 (Three times)**

*Most recently, at Winthrop (02-15-10)*

**FT Made - 8**

*vs. UNC Asheville (01-18-10)*

**FT Attempts - 10**

*vs. UNC Asheville (01-18-10)*

**Rebounds - 9 (Four times)**

*Most recently, at UNCA (02-27-10)*

**Assists - 4**

*vs. N.C. Central (02-04-10)*

**Steals - 3**

*at Radford (02-01-10)*

**Blocks - 2**

*at Winthrop (02-15-10)*

**Career Highs**

**Points - 18**

*vs. Saint Paul's (12-13-08)*

**FG Made - 7**

*vs. Glenville State (12-05-09)*

**FG Attempts - 10**

*vs. Saint Paul's (12-13-08)*

**3FG Made - 1 (Three times)**

*Most recently, at Winthrop (02-15-10)*

**3FG Attempts - 2 (Five times)**

*Most recently, at Winthrop (02-15-10)*

**FT Made - 8**

*vs. UNC Asheville (01-18-10)*

**FT Attempts - 10**

*vs. UNC Asheville (01-18-10)*

**Rebounds - 10 (Three times)**

*Most recently, vs. High Point (01-31-09)*

**Assists - 5**

*vs. Saint Paul's (12-13-08)*

**Steals - 3 (Three times)**

*Most recently, at Radford (02-01-10)*

**Blocks - 2**

*at Winthrop (02-15-10)*

**2009-10 Game-By-Game Statistics**

OPPONENT	DATE	MIN	FG-FGA	3FG-FGA	FT-FTA	OFF-DEF-TOT	A	TO	BLK	STL	PTS
Winston-Salem St.	11-13-09	23	2-3	0-0	4-4	1-1-2	2	0	1	0	8
UNC Greensboro	11-17-09	37	4-8	0-0	3-7	2-3-5	0	4	0	0	11
Tulane	11-20-09	36	3-5	0-0	0-0	3-0-3	2	4	0	1	6
Navy	11-21-09	36	2-8	0-1	0-0	0-2-2	0	2	0	1	4
Lafayette	11-28-09	25	2-2	0-0	1-2	1-2-3	2	0	1	0	5
James Madison	12-01-09	26	2-4	0-0	0-0	3-3-6	1	1	1	2	4
Glenville St.	12-05-09	21	7-8	0-0	0-0	4-2-6	0	1	0	0	14
Auburn	12-15-09	25	1-4	0-0	5-6	0-0-0	1	0	0	2	7
Cornell	12-28-09	20	2-6	0-2	1-2	3-0-3	0	4	0	0	5
Virginia	12-29-09	21	2-4	0-1	2-2	2-0-2	0	0	0	0	6
Gardner-Webb	01-02-10	16	1-3	0-1	2-3	0-3-3	0	1	0	0	4
N.C. A&T	01-05-10	18	0-1	0-0	0-0	0-3-3	0	4	1	1	0
Winthrop	01-09-10	19	2-3	0-0	1-1	0-2-2	2	1	1	1	5
Longwood	01-12-10	25	3-5	0-0	4-5	1-5-6	1	3	0	0	10
Presbyterian	01-16-10	18	1-1	0-0	3-6	0-3-3	1	2	0	1	5
UNC Asheville	01-18-10	27	3-8	0-0	8-10	2-3-5	2	2	0	2	14
Charleston So.	01-23-10	33	4-9	0-0	2-2	4-5-9	0	2	0	2	10
Coastal Carolina	01-25-10	32	2-6	0-0	2-2	8-1-9	1	2	0	1	6
High Point	01-30-10	21	0-4	0-1	3-4	2-2-4	2	0	0	0	3
Radford	02-01-10	38	5-8	0-0	3-4	3-6-9	0	4	0	3	13
N.C. Central	02-04-10	19	1-7	0-0	1-2	1-1-2	4	3	0	0	3
Gardner-Webb	02-08-10	30	2-6	0-2	0-0	3-1-4	2	0	0	1	4
Winthrop	02-15-10	29	2-7	1-2	4-6	1-4-5	1	0	2	1	9
Coastal Carolina	02-20-10	25	4-7	0-1	1-1	1-0-1	0	2	0	1	9
Charleston So.	02-22-10	28	0-3	0-1	4-4	1-1-2	1	1	0	0	4
UNC Asheville	02-27-10	17	3-7	0-0	6-7	6-3-9	0	3	0	0	12

**2009-10 Notes/Highlights**

-- Ranks No. 13 in the Big South with 2.0 offensive rebounds per game.

**Career Stats**

Season	GP	GS	Min	Avg	FG	FGA	Pct	3FG	3FGA	Pct	FT	FTA	Pct	ORB	DRB	TOT	Avg	Asst	TO	Blk	Stl	Pts	Avg
2008-09	31	4	664	21.4	54	118	.458	2	7	.286	27	38	.711	43	97	140	4.5	19	45	2	18	137	4.4
2009-10	26	18	665	25.6	60	137	.438	1	12	.083	60	80	.750	52	56	108	4.2	25	46	7	20	181	7.0
<b>TOTAL</b>	<b>57</b>	<b>22</b>	<b>1329</b>	<b>23.3</b>	<b>114</b>	<b>255</b>	<b>.447</b>	<b>3</b>	<b>19</b>	<b>.158</b>	<b>87</b>	<b>118</b>	<b>.737</b>	<b>95</b>	<b>153</b>	<b>248</b>	<b>4.4</b>	<b>44</b>	<b>91</b>	<b>9</b>	<b>38</b>	<b>318</b>	<b>5.6</b>





**# 21**  
**Amber Mays**  
*5-6 Senior Guard*  
*Pasadena, Calif.*  
*Pasadena HS*  
*(State Fair CC)*

**Season Highs**

**Points - 18**  
*at Auburn (12-15-09)*  
**FG Made - 9**  
*at Auburn (12-15-09)*  
**FG Attempts - 15**  
*vs. James Madison (12-01-09)*  
**3FG Made - 2**  
*vs. UNC Asheville (01-18-10)*  
**3FG Attempts - 2**  
*vs. UNC Asheville (01-18-10)*  
**FT Made - 4 (Two times)**  
*Most recently, at Coastal (01-25-10)*  
**FT Attempts - 7**  
*at Coastal Carolina (01-25-10)*  
**Rebounds - 5 (Two times)**  
*Most recently, at High Point (01-30-10)*  
**Assists - 10**  
*vs. Winthrop (01-09-10)*  
**Steals - 5**  
*vs. Longwood (01-12-10)*  
**Blocks - 1**  
*at Charleston So. (01-23-10)*

**Career Highs**

**Points - 18**  
*at Auburn (12-15-09)*  
**FG Made - 9**  
*at Auburn (12-15-09)*  
**FG Attempts - 15**  
*vs. James Madison (12-01-09)*  
**3FG Made - 2 (Two times)**  
*Most recently, vs. UNCA (01-18-10)*  
**3FG Attempts - 3**  
*at Vanderbilt (12-22-08)*  
**FT Made - 6**  
*at UNC Asheville (01-19-09)*  
**FT Attempts - 8**  
*vs. UC Riverside (11-21-08)*  
**Rebounds - 6 (Two times)**  
*Most recently, vs. Radford (02-02-09)*  
**Assists - 10**  
*vs. Winthrop (01-09-10)*  
**Steals - 8**  
*vs. East Tennessee St. (01-13-09)*  
**Blocks - 1 (Three times)**  
*Most recently, at CSU (01-23-10)*

**2009-10 Game-By-Game Statistics**

OPPONENT	DATE	MIN	FG-FGA	3FG-FGA	FT-FTA	OFF-DEF-TOT	A	TO	BLK	STL	PTS
Winston-Salem St.	11-13-09	24	3-7	0-0	1-2	0-0-0	6	1	0	4	7
UNC Greensboro	11-17-09	26	4-7	1-1	2-6	0-1-1	4	5	0	4	11
Tulane	11-20-09	33	4-6	0-0	2-4	0-2-2	3	4	0	4	10
Navy	11-21-09	30	2-5	0-0	4-5	2-0-2	5	3	0	1	8
Lafayette	11-28-09	31	4-6	0-0	3-4	1-3-4	4	5	0	4	11
James Madison	12-01-09	33	7-15	0-1	0-1	0-2-2	2	1	0	1	14
Glenville St.	12-05-09	18	2-3	0-0	1-2	0-2-2	4	2	0	2	5
Auburn	12-15-09	35	9-13	0-0	0-0	0-1-1	3	6	0	4	18
Cornell	12-28-09	20	2-2	0-0	0-0	0-2-2	8	2	0	4	4
Virginia	12-29-09	28	2-4	0-0	3-4	0-0-0	3	7	0	3	7
Gardner-Webb	01-02-10	33	4-9	0-0	2-6	3-2-5	6	4	0	1	10
N.C. A&T	01-05-10	25	2-4	0-0	0-0	0-2-2	3	2	0	1	4
Winthrop	01-09-10	22	1-3	0-0	1-2	0-0-0	10	2	0	2	3
Longwood	01-12-10	30	3-4	1-1	0-0	0-0-0	3	5	0	5	7
Presbyterian	01-16-10	21	4-6	0-0	0-0	0-2-2	6	1	0	2	8
UNC Asheville	01-18-10	23	5-8	2-2	2-2	1-0-1	5	0	0	3	14
Charleston So.	01-23-10	27	6-9	0-0	2-5	0-0-0	3	1	1	1	14
Coastal Carolina	01-25-10	31	2-6	0-1	4-7	1-1-2	2	4	0	2	8
High Point	01-30-10	26	2-6	0-0	3-4	0-5-5	2	6	0	1	7
Radford	02-01-10	24	4-6	0-0	2-4	1-0-1	7	5	0	3	10
N.C. Central	02-04-10	28	3-6	0-0	2-2	0-2-2	8	4	0	1	8
Gardner-Webb	02-08-10	34	2-7	0-1	2-6	1-0-1	3	2	0	2	6
Winthrop	02-15-10	20	0-1	0-0	1-2	0-1-1	1	4	0	0	1
Coastal Carolina	02-20-10	34	6-10	0-0	0-0	1-2-3	2	1	0	1	12
Charleston So.	02-22-10	20	2-3	0-0	2-4	0-0-0	0	5	0	1	6
UNC Asheville	02-27-10	19	2-6	0-0	2-4	0-2-2	2	2	0	3	6

**2009-10 Notes/Highlights**

- The only senior on Liberty's 2009-10 roster.
- Leads the Big South in assist-to-turnover ratio (1.25), while ranking No. 2 in assists (4.0 apg) and No. 3 in steals (2.3 spg).
- Distributed a career-high 10 assists against Winthrop (Jan. 9), the most by a Lady Flame since Daina Staugaitiene's 10 assists versus Morgan State on Nov. 22, 2002.
- Had recorded a steal in 24 consecutive games, prior to the Feb. 15 game at Winthrop. Has notched a steal in 35 of her last 37 outings.
- First Lady Flame to distribute 100 assists in back-to-back seasons since Daina Staugaitiene did so three straight years (2002-03, 2003-04 and 2004-05).

**Career Stats**

Season	GP	GS	Min	Avg	FG	FGA	Pct	3FG	3FGA	Pct	FT	FTA	Pct	ORB	DRB	TOT	Avg	Asst	TO	Blk	Stl	Pts	Avg
2008-09	33	31	1002	30.4	92	201	.458	5	15	.333	56	86	.651	11	75	86	2.6	126	114	2	68	245	7.4
2009-10	26	26	695	26.7	87	162	.537	4	7	.571	41	76	.539	11	32	43	1.7	105	84	1	60	219	8.4
<b>TOTAL</b>	<b>59</b>	<b>57</b>	<b>1697</b>	<b>28.8</b>	<b>179</b>	<b>363</b>	<b>.493</b>	<b>9</b>	<b>22</b>	<b>.409</b>	<b>97</b>	<b>162</b>	<b>.599</b>	<b>22</b>	<b>107</b>	<b>129</b>	<b>2.2</b>	<b>231</b>	<b>198</b>	<b>3</b>	<b>128</b>	<b>464</b>	<b>7.9</b>



**# 23**

**Avery Warley**  
 6-3 R-Sophomore F  
 Washington, D.C.  
 H.D. Woodson HS

**Season Highs**

**Points - 26**  
 at High Point (01-30-10)  
**FG Made - 9 (Two times)**  
 Most recently, vs. CSU (02-22-10)  
**FG Attempts - 14**  
 at UNC Asheville (02-27-10)  
**3FG Made - 0**  
 None  
**3FG Attempts - 1**  
 at UNC Asheville (02-27-10)  
**FT Made - 8**  
 at High Point (01-30-10)  
**FT Attempts - 11**  
 at High Point (01-30-10)  
**Rebounds - 16**  
 at Charleston So. (01-23-10)  
**Assists - 2 (Three times)**  
 Most recently, vs. UNCA (01-18-10)  
**Steals - 3 (Three times)**  
 Most recently, vs. CSU (02-22-10)  
**Blocks - 3 (Two times)**  
 Most recently, at Winthrop (02-15-10)

**Career Highs**

**Points - 26**  
 at High Point (01-30-10)  
**FG Made - 9 (Two times)**  
 Most recently, vs. CSU (02-22-10)  
**FG Attempts - 14**  
 at UNC Asheville (02-27-10)  
**3FG Made - 0**  
 None  
**3FG Attempts - 1**  
 at UNC Asheville (02-27-10)  
**FT Made - 8**  
 at High Point (01-30-10)  
**FT Attempts - 11**  
 at High Point (01-30-10)  
**Rebounds - 18**  
 at Virginia Tech (12-30-08)  
**Assists - 3**  
 vs. Saint Paul's (12-13-08)  
**Steals - 3 (Five times)**  
 Most recently, vs. CSU (02-22-10)  
**Blocks - 4 (Two times)**  
 Most recently, vs. Winthrop (02-16-09)

**2009-10 Game-By-Game Statistics**

OPPONENT	DATE	MIN	FG-FGA	3FG-FGA	FT-FTA	OFF-DEF-TOT	A	TO	BLK	STL	PTS
Winston-Salem St.	11-13-09	26	2-6	0-0	0-2	4-5-9	2	5	0	0	4
UNC Greensboro	11-17-09	19	0-0	0-0	0-0	2-5-7	0	1	0	1	0
Tulane	11-20-09	37	4-10	0-0	1-2	6-5-11	1	4	0	1	9
Navy	11-21-09	32	5-7	0-0	0-0	3-3-6	0	6	0	0	10
Lafayette	11-28-09	21	8-13	0-0	3-3	8-3-11	0	1	0	0	19
James Madison	12-01-09	29	3-7	0-0	3-4	3-4-7	2	2	0	1	9
Glenville St.	12-05-09	25	3-6	0-0	1-4	2-4-6	0	1	1	0	7
Auburn	12-15-09	33	4-6	0-0	2-2	3-3-6	0	2	0	0	10
Cornell	12-28-09	22	4-5	0-0	2-6	2-5-7	0	2	1	1	10
Virginia	12-29-09	32	6-12	0-0	0-0	3-5-8	0	5	0	2	12
Gardner-Webb	01-02-10	26	4-8	0-0	2-5	3-3-6	0	5	1	3	10
N.C. A&T	01-05-10	26	4-8	0-0	1-4	6-5-11	0	5	0	2	9
Winthrop	01-09-10	23	2-2	0-0	1-2	1-4-5	1	5	1	1	5
Longwood	01-12-10	21	6-7	0-0	0-1	3-2-5	1	1	0	0	12
Presbyterian	01-16-10	25	1-2	0-0	4-7	2-0-2	0	3	0	1	6
UNC Asheville	01-18-10	24	2-8	0-0	2-6	4-6-10	2	2	3	0	6
Charleston So.	01-23-10	30	8-12	0-0	2-4	5-11-16	0	2	0	0	18
Coastal Carolina	01-25-10	28	6-9	0-0	3-8	7-5-12	0	2	1	0	15
High Point	01-30-10	38	9-13	0-0	8-11	5-9-14	0	0	1	2	26
Radford	02-01-10	24	2-4	0-0	0-0	1-4-5	0	1	2	1	4
N.C. Central	02-04-10	34	8-11	0-0	0-1	6-5-11	0	2	1	1	16
Gardner-Webb	02-08-10	32	5-10	0-0	5-7	3-7-10	0	3	2	1	15
Winthrop	02-15-10	26	2-3	0-0	0-0	3-5-8	1	1	3	2	4
Coastal Carolina	02-20-10	20	2-6	0-0	1-2	4-4-8	1	4	1	3	5
Charleston So.	02-22-10	34	9-9	0-0	4-9	6-4-10	1	2	0	3	22
UNC Asheville	02-27-10	20	8-14	0-1	6-9	7-3-10	0	1	0	2	22

**2009-10 Notes/Highlights**

- Set the Vines Center single-game field goal percentage record Feb. 22 versus Charleston Southern, connecting on all nine of her attempts. Made 11 consecutive field goals overall, including her first two shots at UNC Asheville on Saturday.
- Named Big South Player of the Week on Jan. 26, after averaging 16.5 ppg and 14.0 rpg during Liberty's 2-0 South Carolina "Beach Trip."
- Leads the Big South in field goal percentage (.591) and ranks No. 2 in offensive rebounds (3.9 rpg), No. 3 in total rebounds (8.5 rpg), No. 5 in defensive rebounds (4.6 rpg), No. 8 in blocked shots (0.7 bpg) and No. 10 in scoring (11.0 ppg).
- Tabbed a "Rising Star" by the Richmond Times-Dispatch.
- Named to the Marriott Cavalier Classic all-tournament team, after averaging 11.0 ppg and 7.5 rpg in two games.
- Has tallied 477 career boards, putting her in 24th place in program history.
- Has scored 551 career points, putting her in a tie for 42nd place in program history.
- Became the 50th Lady Flame ever to reach the 500-point milestone Feb. 15 at Winthrop, with a putback hoop, 13:42 before halftime.
- Has notched eight double-doubles this season (at Lafayette on Nov. 28; at Charleston Southern on Jan. 23; at Coastal Carolina on Jan. 25; at High Point on Jan. 30; vs. N.C. Central on Feb. 4; vs. Gardner-Webb on Feb. 8; vs. Charleston Southern on Feb. 22; at UNC Asheville on Feb. 27) and 10 in her career.

**Career Stats**

Season	GP	GS	Min	Avg	FG	FGA	Pct	3FG	3FGA	Pct	FT	FTA	Pct	ORB	DRB	TOT	Avg	Asst	TO	Blk	Stl	Pts	Avg
2008-09	33	33	832	25.2	112	179	.626	0	0	.000	42	81	.519	85	171	256	7.8	11	76	47	23	266	8.1
2009-10	26	26	707	27.2	117	198	.591	0	1	.000	51	99	.515	102	119	221	8.5	12	68	18	28	285	11.0
<b>TOTAL</b>	<b>59</b>	<b>59</b>	<b>1539</b>	<b>26.1</b>	<b>229</b>	<b>377</b>	<b>.607</b>	<b>0</b>	<b>1</b>	<b>.000</b>	<b>93</b>	<b>180</b>	<b>.517</b>	<b>187</b>	<b>290</b>	<b>477</b>	<b>8.1</b>	<b>23</b>	<b>144</b>	<b>65</b>	<b>51</b>	<b>551</b>	<b>9.3</b>



**# 25**  
**Dymond Morgan**  
*5-7 Junior Guard*  
*Lynwood, Calif.*  
*Lynwood HS*  
*(Midland College)*

**Season/Career Highs**

**Points - 11**  
*vs. Winthrop (01-09-10)*  
**FG Made - 4**  
*vs. Winthrop (01-09-10)*  
**FG Attempts - 7 (Two times)**  
*Most recently, at Winthrop (02-15-10)*  
**3FG Made - 2**  
*vs. Winthrop (01-09-10)*  
**3FG Attempts - 3 (Two times)**  
*Most recently, at Winthrop (02-15-10)*  
**FT Made - 3 (Two times)**  
*Most recently, at Radford (02-01-10)*  
**FT Attempts - 4 (Two times)**  
*Most recently, at Radford (02-01-10)*  
**Rebounds - 7**  
*vs. Glenville State (12-05-09)*  
**Assists - 7**  
*vs. Glenville State (12-05-09)*  
**Steals - 5**  
*vs. Presbyterian (01-16-10)*  
**Blocks - 0**  
*None*

**2009-10 Game-By-Game Statistics**

OPPONENT	DATE	MIN	FG-FGA	3FG-FGA	FT-FTA	OFF-DEF-TOT	A	TO	BLK	STL	PTS
Winston-Salem St.	11-13-09	16	0-2	0-0	0-0	1-3-4	1	2	0	1	0
UNC Greensboro	11-17-09	24	3-5	0-1	0-0	1-4-5	2	2	0	1	6
Tulane	11-20-09	18	3-6	1-1	2-2	0-2-2	0	4	0	2	9
Navy	11-21-09	15	1-2	0-0	0-0	1-2-3	0	2	0	0	2
Lafayette	11-28-09	4	0-1	0-0	1-2	0-0-0	0	1	0	0	1
James Madison	12-01-09	7	0-0	0-0	0-0	0-0-0	0	1	0	0	0
Glenville St.	12-05-09	22	2-2	0-0	2-3	0-7-7	7	8	0	1	6
Auburn	12-15-09	10	1-1	0-0	0-0	0-2-2	0	0	0	1	2
Cornell	12-28-09	22	0-3	0-0	2-2	1-0-1	1	5	0	3	2
Virginia	12-29-09	12	1-2	0-0	0-0	1-0-1	0	3	0	0	2
Gardner-Webb	01-02-10	13	2-4	0-0	2-3	0-1-1	1	0	0	2	6
N.C. A&T	01-05-10	17	2-3	0-0	1-2	0-0-0	1	1	0	3	5
Winthrop	01-09-10	20	4-7	2-3	1-2	0-1-1	1	1	0	2	11
Longwood	01-12-10	15	2-6	0-1	2-2	0-3-3	3	2	0	1	6
Presbyterian	01-16-10	18	2-3	0-0	1-1	0-0-0	4	2	0	5	5
UNC Asheville	01-18-10	22	3-6	0-2	0-0	0-2-2	6	2	0	4	6
Charleston So.	01-23-10	13	0-2	0-1	2-3	0-1-1	0	3	0	0	2
Coastal Carolina	01-25-10	14	1-5	0-2	0-0	0-0-0	1	1	0	0	2
High Point	01-30-10	19	1-5	1-1	3-4	0-0-0	1	1	0	3	6
Radford	02-01-10	17	1-5	0-0	3-4	1-2-3	1	3	0	3	5
N.C. Central	02-04-10	12	0-3	0-2	0-0	1-0-1	1	1	0	0	0
Gardner-Webb	02-08-10	9	1-2	0-1	1-2	0-0-0	1	0	0	0	3
Winthrop	02-15-10	23	2-7	1-3	0-0	0-1-1	1	5	0	2	5
Coastal Carolina	02-20-10	14	1-2	0-0	1-2	0-1-1	1	1	0	0	3
Charleston So.	02-22-10	23	2-5	0-1	1-2	0-1-1	2	3	0	3	5
UNC Asheville	02-27-10	20	1-6	0-1	0-2	0-0-0	5	2	0	1	2

**2009-10 Notes/Highlights**

**Career Stats**

Season	GP	GS	Min	Avg	FG	FGA	Pct	3FG	3FGA	Pct	FT	FTA	Pct	ORB	DRB	TOT	Avg	Asst	TO	Blk	Stl	Pts	Avg
2009-10	26	0	419	16.1	36	95	.379	5	20	.250	25	38	.658	7	33	40	1.5	41	57	0	38	102	3.9





**# 30**

**Brittany Campbell**  
*6-0 R-Freshman Guard*  
*Rustburg, Va.*  
*Brookville HS*

**Career Highs**

**Points - 11**

*vs. Hartford (11-28-08)*

**FG Made - 4**

*vs. Hartford (11-28-08)*

**FG Attempts - 12**

*at James Madison (12-02-08)*

**3FG Made - 3**

*at James Madison (12-02-08)*

**3FG Attempts - 7**

*at James Madison (12-02-08)*

**FT Made - 3**

*vs. South Alabama (11-29-08)*

**FT Attempts - 3 (Two times)**

*Most recently, vs. S. Alabama (11-29-08)*

**Rebounds - 3 (Three times)**

*Most recently, at JMU (12-02-08)*

**Assists - 1**

*vs. Hartford (11-28-08)*

**Steals - 2**

*vs. South Alabama (11-29-08)*

**Blocks - 1**

*vs. South Alabama (11-29-08)*

## 2009-10 Game-By-Game Statistics

OPPONENT	DATE	MIN	FG-FGA	3FG-FGA	FT-FTA	OFF-DEF-TOT	A	TO	BLK	STL	PTS
Winston-Salem St.	11-13-09										Did not play
UNC Greensboro	11-17-09										Did not play
Tulane	11-20-09										Did not play
Navy	11-21-09										Did not play
Lafayette	11-28-09										Did not play
James Madison	12-01-09										Did not play
Glenville St.	12-05-09										Did not play
Auburn	12-15-09										Did not play
Cornell	12-28-09										Did not play
Virginia	12-29-09										Did not play
Gardner-Webb	01-02-10										Did not play
N.C. A&T	01-05-10										Did not play
Winthrop	01-09-10										Did not play
Longwood	01-12-10										Did not play
Presbyterian	01-16-10										Did not play
UNC Asheville	01-18-10										Did not play
Charleston So.	01-23-10										Did not play
Coastal Carolina	01-25-10										Did not play
High Point	01-30-10										Did not play
Radford	02-01-10										Did not play
N.C. Central	02-04-10										Did not play
Gardner-Webb	02-08-10										Did not play
Winthrop	02-15-10										Did not play
Coastal Carolina	02-20-10										Did not play
Charleston So.	02-22-10										Did not play
UNC Asheville	02-27-10										Did not play

## 2009-10 Notes/Highlights

-- Has missed the first 26 games of the 2009-10 season, due to a knee injury.

## Career Stats

Season	GP	GS	Min	Avg	FG	FGA	Pct	3FG	3FGA	Pct	FT	FTA	Pct	ORB	DRB	TOT	Avg	Asst	TO	Blk	Stl	Pts	Avg
2008-09	5	1	104	20.8	11	31	.355	6	18	.333	7	9	.778	5	6	11	2.2	1	6	1	4	35	7.0



**# 32**

**Rachel McLeod**  
*5-10 Junior Guard*  
*Houston, Texas*  
*Home Schooled*

**Season Highs**

**Points - 11**

vs. Presbyterian (01-16-10)

**FG Made - 4 (Two times)**

Most recently, vs. G.-Webb (02-08-10)

**FG Attempts - 8 (Two times)**

Most recently, vs. NCCU (02-04-10)

**3FG Made - 2**

vs. UNC Asheville (01-18-10)

**3FG Attempts - 3 (Three times)**

Most recently, vs. UNCA (01-18-10)

**FT Made - 5**

at Radford (02-01-10)

**FT Attempts - 6**

at Radford (02-01-10)

**Rebounds - 8**

at Gardner-Webb (01-02-10)

**Assists - 7**

vs. Glenville State (12-05-09)

**Steals - 4**

vs. UNC Asheville (01-18-10)

**Blocks - 1**

vs. Longwood (01-12-10)

**Career Highs**

**Points - 13**

at Coastal Carolina (02-21-09)

**FG Made - 4 (Six times)**

Most recently, vs. G.-Webb (02-08-10)

**FG Attempts - 13**

at Old Dominion (03-23-08)

**3FG Made - 2 (Four times)**

Most recently, vs. UNCA (01-18-10)

**3FG Attempts - 5**

at Old Dominion (03-23-08)

**FT Made - 5 (Two times)**

Most recently, at Radford (02-01-10)

**FT Attempts - 6 (Two times)**

Most recently, at Radford (02-01-10)

**Rebounds - 8 (Two times)**

Most recently, at G.-Webb (01-02-10)

**Assists - 8**

vs. High Point (03-15-08)

**Steals - 4 (Two times)**

Most recently, vs. UNCA (01-18-10)

**Blocks - 1 (Eight times)**

Most recently, vs. Longwood (01-12-10)

**2009-10 Game-By-Game Statistics**

OPPONENT	DATE	MIN	FG-FGA	3FG-FGA	FT-FTA	OFF-DEF-TOT	A	TO	BLK	STL	PTS
Winston-Salem St.	11-13-09	25	3-5	0-1	2-2	1-0-1	2	0	0	2	8
UNC Greensboro	11-17-09	25	1-7	0-3	0-0	0-1-1	2	3	0	2	2
Tulane	11-20-09	23	3-4	0-0	3-5	0-2-2	2	2	0	0	9
Navy	11-21-09	18	3-4	0-0	0-2	1-1-2	0	1	0	0	6
Lafayette	11-28-09	18	1-4	0-0	2-2	0-1-1	0	1	0	1	4
James Madison	12-01-09	23	3-6	0-3	2-2	0-1-1	0	4	0	1	8
Glenville St.	12-05-09	18	2-6	0-0	2-4	1-1-2	7	2	0	2	6
Auburn	12-15-09	22	0-6	0-0	2-2	0-1-1	1	1	0	0	2
Cornell	12-28-09	17	1-2	1-1	0-0	0-0-0	0	2	0	0	3
Virginia	12-29-09	19	2-2	0-0	1-1	0-2-2	0	3	0	0	5
Gardner-Webb	01-02-10	32	2-4	0-0	2-2	2-6-8	2	4	0	0	6
N.C. A&T	01-05-10	25	1-8	0-0	2-2	2-0-2	1	0	0	1	4
Winthrop	01-09-10	20	2-3	0-0	0-0	1-2-3	2	0	0	1	4
Longwood	01-12-10	27	2-6	0-0	1-2	0-2-2	4	2	1	0	5
Presbyterian	01-16-10	20	4-6	1-1	2-2	1-2-3	1	0	0	2	11
UNC Asheville	01-18-10	23	3-7	2-3	2-2	1-4-5	3	0	0	4	10
Charleston So.	01-23-10	29	0-3	0-0	3-4	1-1-2	1	1	0	0	3
Coastal Carolina	01-25-10	30	1-5	0-0	0-0	2-1-3	2	2	0	1	2
High Point	01-30-10	32	0-3	0-1	2-2	1-0-1	2	3	0	0	2
Radford	02-01-10	21	2-4	0-0	5-6	0-1-1	2	1	0	1	9
N.C. Central	02-04-10	30	3-8	0-0	0-0	2-2-4	1	1	0	0	6
Gardner-Webb	02-08-10	33	4-7	1-2	0-0	2-0-2	3	2	0	2	9
Winthrop	02-15-10	28	1-4	0-2	1-2	2-2-4	1	1	0	3	3
Coastal Carolina	02-20-10	24	0-2	0-0	0-0	0-2-2	3	1	0	0	0
Charleston So.	02-22-10	27	2-4	0-0	0-0	1-1-2	1	0	0	1	4
UNC Asheville	02-27-10	19	0-4	0-0	2-2	1-0-1	4	0	0	2	2

**2009-10 Notes/Highlights**

-- Scored in double figures in back-to-back games for the first time in her career, Jan. 16 vs. Presbyterian and Jan. 18 vs. UNC Asheville.

**Career Stats**

Season	GP	GS	Min	Avg	FG	FGA	Pct	3FG	3FGA	Pct	FT	FTA	Pct	ORB	DRB	TOT	Avg	Asst	TO	Blk	Stl	Pts	Avg
2007-08	32	0	531	16.6	50	108	.463	12	33	.364	27	41	.659	10	46	56	1.8	66	60	4	25	139	4.3
2008-09	30	5	622	20.7	39	120	.325	9	34	.265	34	45	.756	11	60	71	2.4	73	82	3	29	121	4.0
2009-10	26	26	628	24.2	46	124	.371	5	17	.294	36	46	.783	22	36	58	2.2	47	37	1	26	133	5.1
<b>TOTAL</b>	<b>88</b>	<b>31</b>	<b>1781</b>	<b>20.2</b>	<b>135</b>	<b>352</b>	<b>.384</b>	<b>26</b>	<b>84</b>	<b>.310</b>	<b>97</b>	<b>132</b>	<b>.735</b>	<b>43</b>	<b>142</b>	<b>185</b>	<b>2.1</b>	<b>186</b>	<b>179</b>	<b>8</b>	<b>80</b>	<b>393</b>	<b>4.5</b>



**# 40**

**Devon Brown**

*5-10 R-Freshman G  
Waynesboro, Va.  
Waynesboro HS*

**Season/Career Highs**

**Points - 29**

*at High Point (01-30-10)*

**FG Made - 12**

*at High Point (01-30-10)*

**FG Attempts - 18**

*vs. Gardner-Webb (02-08-10)*

**3FG Made - 3 (Four times)**

*Most recently, vs. Presby. (01-16-10)*

**3FG Attempts - 6 (Three times)**

*Most recently, vs. CSU (02-22-10)*

**FT Made - 8 (Two times)**

*Most recently, at Radford (02-01-10)*

**FT Attempts - 9 (Two times)**

*Most recently, at Radford (02-01-10)*

**Rebounds - 13 (Four times)**

*Most recently, vs. G.-Webb (02-08-10)*

**Assists - 4 (Two times)**

*Most recently, at CSU (01-23-10)*

**Steals - 5 (Two times)**

*Most recently, vs. Coastal (02-20-10)*

**Blocks - 2 (Four times)**

*Most recently, at High Point (01-30-10)*

**2009-10 Game-By-Game Statistics**

OPPONENT	DATE	MIN	FG-FGA	3FG-FGA	FT-FTA	OFF-DEF-TOT	A	TO	BLK	STL	PTS
Winston-Salem St.	11-13-09	22	11-14	3-5	1-1	4-3-7	1	2	0	0	26
UNC Greensboro	11-17-09	30	11-15	1-2	3-7	4-5-9	2	3	0	3	26
Tulane	11-20-09	32	6-13	3-4	3-6	3-9-12	1	2	2	1	18
Navy	11-21-09	33	4-13	3-5	8-9	3-8-11	2	1	0	5	19
Lafayette	11-28-09	20	8-14	1-3	0-0	2-1-3	4	2	0	1	17
James Madison	12-01-09	34	1-16	0-3	7-8	4-9-13	0	6	0	1	9
Glenville St.	12-05-09	18	8-11	0-1	4-6	2-7-9	2	1	0	0	20
Auburn	12-15-09	37	7-9	2-3	3-3	0-8-8	0	3	1	0	19
Cornell	12-28-09	23	8-14	1-3	1-3	1-5-6	1	2	1	2	18
Virginia	12-29-09	25	4-13	1-6	0-0	1-5-6	0	4	2	3	9
Gardner-Webb	01-02-10	31	2-11	1-4	4-4	3-8-11	0	2	0	3	9
N.C. A&T	01-05-10	32	6-15	1-5	4-7	4-9-13	3	3	1	2	17
Winthrop	01-09-10	23	8-16	2-6	3-3	1-5-6	1	1	0	2	21
Longwood	01-12-10	30	5-17	0-4	6-6	6-7-13	3	4	2	3	16
Presbyterian	01-16-10	21	5-8	3-5	0-0	1-4-5	3	1	1	2	13
UNC Asheville	01-18-10	25	5-10	2-4	0-0	2-6-8	2	4	1	0	12
Charleston So.	01-23-10	32	4-7	1-3	2-5	2-4-6	4	4	0	3	11
Coastal Carolina	01-25-10	29	6-16	1-3	4-4	2-8-10	1	1	1	4	17
High Point	01-30-10	39	12-17	0-3	5-8	1-10-11	2	4	2	1	29
Radford	02-01-10	32	6-12	0-3	8-9	3-8-11	1	2	0	3	20
N.C. Central	02-04-10	27	4-6	2-4	0-0	2-4-6	0	1	0	0	10
Gardner-Webb	02-08-10	37	5-18	1-4	2-2	4-9-13	1	3	0	2	13
Winthrop	02-15-10	20	7-16	1-5	0-0	3-2-5	2	2	0	1	15
Coastal Carolina	02-20-10	31	6-14	0-2	2-5	3-3-6	1	2	0	5	14
Charleston So.	02-22-10	33	7-16	1-6	5-6	4-8-12	2	6	1	2	20
UNC Asheville	02-27-10	22	5-9	2-2	0-3	3-2-5	2	2	0	3	12

**2009-10 Notes/Highlights**

-- Earned her second Big South Player of the Week award this season on Feb. 2, after posting 24.5 ppg and 11.0 rpg during Liberty's wins at High Point and Radford. Brown is one of three Big South players (also CSU's Kelsey Wasmer and GWU's Margaret Roundtree) to win the award multiple times this season.

-- Previously named Big South Player of the Week on Nov. 24, becoming the first Liberty freshman to capture the award since Megan Frazee (twice in 2005-06).

-- Ranks in the top 10 of seven different Big South statistical categories, including scoring (1st-16.5 ppg), defensive rebounds (1st-6.0 rpg), rebounding (2nd-8.7 rpg), field goal percentage (4th-.474), steals (T-5th, 2.0 spg), free throw percentage (6th-.714) and offensive rebounds (6th-2.6 rpg).

-- Her 26 points versus Winston-Salem State (Nov. 13) equaled the Lady Rams' point total and were the most points by a Lady Flame in her collegiate debut since Elena Kisseleva scored 30 points versus Bluefield on Nov. 23, 1996.

-- Outscored Navy during the second half of the Navy Classic championship game (Nov. 21), 14-11. She was named the Championship Game All-Star, after tallying 19 points, 11 rebounds and a career-high five steals.

-- Has posted nine double-doubles this season (Nov. 20 vs. Tulane, Nov. 21 at Navy, Jan. 5 vs. North Carolina A&T, Jan. 12 vs. Longwood, Jan. 25 at Coastal Carolina, Jan. 30 at High Point, Feb. 1 at Radford, Feb. 8 vs. Gardner-Webb and Feb. 22 vs. Charleston Southern).

-- Has scored in double figures in 15 consecutive games.

**Career Stats**

Season	GP	GS	Min	Avg	FG	FGA	Pct	3FG	3FGA	Pct	FT	FTA	Pct	ORB	DRB	TOT	Avg	Asst	TO	Blk	Stl	Pts	Avg
2009-10	26	26	738	28.4	161	340	.474	33	98	.337	75	105	.714	68	157	225	8.7	41	68	15	52	430	16.5



**# 43**

**Kittery Maine**

*6-4 Junior Forward*

*Bonaire, Ga.*

*Warner Robins HS*

**Career Highs**

**Points - 12**

*vs. Saint Paul's (12-13-08)*

**FG Made - 5**

*vs. Saint Paul's (12-13-08)*

**FG Attempts - 8**

*vs. Saint Paul's (12-13-08)*

**3FG Made - 0**

*None*

**3FG Attempts - 0**

*None*

**FT Made - 3**

*vs. Charleston So. (02-18-08)*

**FT Attempts - 4**

*vs. Charleston So. (02-18-08)*

**Rebounds - 7**

*vs. Saint Paul's (12-13-08)*

**Assists - 1 (Six times)**

*Most recently, vs. Radford (02-02-09)*

**Steals - 1 (Five times)**

*Most recently, vs. Winthrop (02-16-09)*

**Blocks - 3 (Two times)**

*Most recently, at W. Carolina (11-22-08)*

## 2009-10 Game-By-Game Statistics

OPPONENT	DATE	MIN	FG-FGA	3FG-FGA	FT-FTA	OFF-DEF-TOT	A	TO	BLK	STL	PTS
Winston-Salem St.	11-13-09										Did not play
UNC Greensboro	11-17-09										Did not play
Tulane	11-20-09										Did not play
Navy	11-21-09										Did not play
Lafayette	11-28-09										Did not play
James Madison	12-01-09										Did not play
Glenville St.	12-05-09										Did not play
Auburn	12-15-09										Did not play
Cornell	12-28-09										Did not play
Virginia	12-29-09										Did not play
Gardner-Webb	01-02-10										Did not play
N.C. A&T	01-05-10										Did not play
Winthrop	01-09-10										Did not play
Longwood	01-12-10										Did not play
Presbyterian	01-16-10										Did not play
UNC Asheville	01-18-10										Did not play
Charleston So.	01-23-10										Did not play
Coastal Carolina	01-25-10										Did not play
High Point	01-30-10										Did not play
Radford	02-01-10										Did not play
N.C. Central	02-04-10										Did not play
Gardner-Webb	02-08-10										Did not play
Winthrop	02-15-10										Did not play
Coastal Carolina	02-20-10										Did not play
Charleston So.	02-22-10										Did not play
UNC Asheville	02-27-10										Did not play

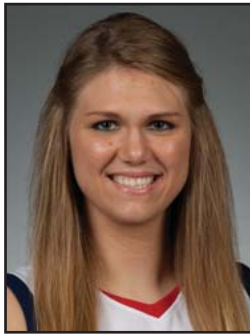
## 2009-10 Notes/Highlights

-- Has missed the first 26 games of the 2009-10 season, due to a knee injury.

## Career Stats

Season	GP	GS	Min	Avg	FG	FGA	Pct	3FG	3FGA	Pct	FT	FTA	Pct	ORB	DRB	TOT	Avg	Asst	TO	Blk	Stl	Pts	Avg
2007-08	28	0	202	7.2	22	30	.733	0	0	.000	10	18	.556	13	28	41	1.5	3	18	6	3	54	1.9
2008-09	24	0	197	8.2	20	41	.488	0	0	.000	2	4	.500	17	30	47	2.0	3	12	7	2	42	1.8
<b>TOTAL</b>	<b>52</b>	<b>0</b>	<b>399</b>	<b>7.7</b>	<b>42</b>	<b>71</b>	<b>.592</b>	<b>0</b>	<b>0</b>	<b>.000</b>	<b>12</b>	<b>22</b>	<b>.545</b>	<b>30</b>	<b>58</b>	<b>88</b>	<b>1.7</b>	<b>6</b>	<b>30</b>	<b>13</b>	<b>5</b>	<b>96</b>	<b>1.8</b>





**# 54**

**Carra Coy**

*6-6 Freshman Forward  
Summerville, S.C.  
Northwood Academy*

**Season/Career Highs**

**Points - 3 (Four times)**

*Most recently, at UNCA (02-27-10)*

**FG Made - 1 (Eight times)**

*Most recently, vs. Coastal (02-20-10)*

**FG Attempts - 4 (Two times)**

*at Winthrop (02-15-10)*

**3FG Made - 0**

*None*

**3FG Attempts - 0**

*None*

**FT Made - 3**

*at UNC Asheville (02-27-10)*

**FT Attempts - 4**

*at UNC Asheville (02-27-10)*

**Rebounds - 4 (Four times)**

*Most recently, at UNCA (02-27-10)*

**Assists - 1**

*vs. Coastal (02-20-10)*

**Steals - 1 (Two times)**

*Most recently, vs. NCCU (02-04-10)*

**Blocks - 2**

*vs. UNC Greensboro (11-17-09)*

**2009-10 Game-By-Game Statistics**

OPPONENT	DATE	MIN	FG-FGA	3FG-FGA	FT-FTA	OFF-DEF-TOT	A	TO	BLK	STL	PTS
Winston-Salem St.	11-13-09	19	1-3	0-0	1-2	0-1-1	0	2	1	0	3
UNC Greensboro	11-17-09	14	1-2	0-0	0-0	1-3-4	0	0	2	0	2
Tulane	11-20-09					Did not play					
Navy	11-21-09					Did not play					
Lafayette	11-28-09	17	1-1	0-0	0-0	0-1-1	0	1	0	1	2
James Madison	12-01-09	7	0-0	0-0	0-0	1-0-1	0	1	0	0	0
Glenville St.	12-05-09	15	0-1	0-0	2-2	1-3-4	0	3	1	0	2
Auburn	12-15-09					Did not play					
Cornell	12-28-09	15	1-2	0-0	1-2	0-2-2	0	1	1	0	3
Virginia	12-29-09					Did not play					
Gardner-Webb	01-02-10	5	0-0	0-0	0-0	0-1-1	0	1	0	0	0
N.C. A&T	01-05-10	4	1-1	0-0	0-0	0-0-0	0	0	0	0	2
Winthrop	01-09-10	9	0-4	0-0	0-0	2-1-3	0	0	1	0	0
Longwood	01-12-10	5	0-0	0-0	0-1	1-0-1	0	0	0	0	0
Presbyterian	01-16-10	15	0-1	0-0	0-1	1-1-2	0	1	1	0	0
UNC Asheville	01-18-10	10	1-1	0-0	0-0	1-0-1	0	1	1	0	2
Charleston So.	01-23-10	4	0-0	0-0	0-0	0-1-1	0	1	0	0	0
Coastal Carolina	01-25-10					Did not play					
High Point	01-30-10	1	0-0	0-0	0-0	0-0-0	0	0	0	0	0
Radford	02-01-10	6	0-0	0-0	0-2	1-0-1	0	0	0	0	0
N.C. Central	02-04-10	6	0-1	0-0	0-0	0-0-0	0	0	0	1	0
Gardner-Webb	02-08-10					Did not play					
Winthrop	02-15-10	14	1-4	0-0	0-0	3-1-4	0	0	0	0	2
Coastal Carolina	02-20-10	8	1-1	0-0	1-2	3-0-3	1	1	0	0	3
Charleston So.	02-22-10	2	0-0	0-0	0-0	0-0-0	0	0	0	0	0
UNC Asheville	02-27-10	17	0-2	0-0	3-4	3-1-4	0	0	0	0	3

**2009-10 Notes/Highlights**

**Career Stats**

Season	GP	GS	Min	Avg	FG	FGA	Pct	3FG	3FGA	Pct	FT	FTA	Pct	ORB	DRB	TOT	Avg	Asst	TO	Blk	Stl	Pts	Avg
2009-10	20	0	193	9.7	8	24	.333	0	0	.000	8	16	.500	18	16	34	1.7	1	13	8	2	24	1.2



Official Basketball Box Score -- Game Totals -- Final Statistics  
**Liberty vs UNC Asheville**  
**02-27-10 2 p.m. at Asheville, N.C./Justice Center**



**Liberty 94 • 21-5, 11-2 BSC**

#	Player	f	Total			3-Ptr			Rebounds			PF	TP	A	TO	Blk	Stl	Min
			FG-FGA	FG-FGA	FT-FTA	FG-FGA	FG-FGA	FT-FTA	Off	Def	Tot							
15	BEECHER, Kylee	f	3-7	0-0	6-7	6	3	9	1	12	0	3	0	0	17			
23	WARLEY, Avery	f	8-14	0-1	6-9	7	3	10	2	22	0	1	0	2	20			
21	MAYS, Amber	g	2-6	0-0	2-4	0	2	2	2	6	2	2	0	3	19			
32	McLEOD, Rachel	g	0-4	0-0	2-2	1	0	1	2	2	4	0	0	2	19			
40	BROWN, Devon	g	5-9	2-2	0-3	3	2	5	3	12	2	2	0	3	22			
01	WASHINGTON, LaKendra		5-9	1-3	1-2	0	0	0	2	12	4	0	0	3	23			
11	ANTIC, Jelena		6-8	1-1	0-0	4	1	5	2	13	2	1	0	1	24			
12	DALE, Danika		3-6	2-3	2-7	1	3	4	3	10	3	3	0	1	19			
25	MORGAN, Dymond		1-6	0-1	0-2	0	0	0	0	2	5	2	0	1	20			
54	COY, Carra		0-2	0-0	3-4	3	1	4	1	3	0	0	0	0	17			
Team						2	1	3										
Totals			33-71	6-11	22-40	27	16	43	18	94	22	14	0	16	200			

FG % 1st Half: 20-38 52.6% 2nd half: 13-33 39.4% Game: 33-71 46.5% Deadball Rebounds 6  
 3FG % 1st Half: 5-7 71.4% 2nd half: 1-4 25.0% Game: 6-11 54.5%  
 FT % 1st Half: 9-17 52.9% 2nd half: 13-23 56.5% Game: 22-40 55.0%

**UNC Asheville 66 • 7-20, 2-12 BSC**

#	Player	f	Total			3-Ptr			Rebounds			PF	TP	A	TO	Blk	Stl	Min
			FG-FGA	FG-FGA	FT-FTA	FG-FGA	FG-FGA	FT-FTA	Off	Def	Tot							
13	RILES, Kelli	f	3-4	0-0	3-5	2	3	5	5	9	1	3	0	1	22			
21	MONTGOMERY, Lindsey	c	3-6	1-1	4-4	3	7	10	5	11	1	4	4	0	21			
04	SHEPARD, Kendall	g	2-6	0-2	0-0	1	3	4	2	4	8	6	0	3	32			
12	THOMPSON, Lindsey	g	3-11	1-6	2-2	2	2	4	3	9	5	5	0	2	38			
24	BLAYLOCK, Grace	g	3-7	2-5	1-1	1	0	1	3	9	0	3	1	0	30			
05	OKOLI, Chioma		1-1	0-0	3-4	0	1	1	3	5	0	1	0	1	11			
14	BARKSDALE, Breaira		0-1	0-0	0-0	0	0	0	0	0	0	2	0	0	3			
20	WAGNER, Dana		1-1	1-1	0-0	0	2	2	0	3	0	0	0	0	5			
32	WISE, Katie		1-3	0-0	1-2	1	0	1	2	3	0	1	0	2	14			
35	RAINEY, Kiana		4-4	1-1	4-6	0	5	5	4	13	0	3	0	0	22			
44	WHEATON, Mackenzie		0-0	0-0	0-0	0	0	0	0	0	0	0	0	0	2			
Team						0	0	0										
Totals			21-44	6-16	18-24	10	23	33	27	66	15	28	5	9	200			

FG % 1st Half: 11-18 61.1% 2nd half: 10-26 38.5% Game: 21-44 47.7% Deadball Rebounds 3  
 3FG % 1st Half: 2-5 40.0% 2nd half: 4-11 36.4% Game: 6-16 37.5%  
 FT % 1st Half: 9-12 75.0% 2nd half: 9-12 75.0% Game: 18-24 75.0%

Officials: Jeffery McNicol, Bill Keaton, Marissa Whaley  
 Technical fouls: Liberty-None. UNC Asheville-None.  
 Attendance: 986

Score by periods	1st	2nd	Total
Liberty	54	40	94
UNC Asheville	33	33	66

	In	Off	2nd	Fast	
Points	Paint	T/O	Chance	Break	Bench
LIBERTY	50	42	22	10	40
UNCA	23	15	4	5	24

Last FG - LIBERTY 2nd-01:56, UNCA 2nd-01:05.  
 Largest lead - LIBERTY by 33 2nd-14:04, UNCA by 1 1st-15:07.

Score tied - 2 times.  
 Lead changed - 4 times.



Official Basketball Box Score -- Game Totals -- Final Statistics  
**Presbyterian College vs Liberty**  
 01-16-10 4:05 p.m. at Lynchburg, Va. (Vines Center)



**Presbyterian College 27 • 2-13, 1-2 BSC**

#	Player		Total			3-Ptr			Rebounds			PF	TP	A	TO	Blk	Stl	Min
			FG-FGA	FG-FGA	FT-FTA	FG-FGA	FG-FGA	FT-FTA	Off	Def	Tot							
21	WRIGHT, Chelsea	f	0-0	0-0	0-0	0-0	0-0	2	1	3	2	0	0	2	0	0	15	
51	PIETROWSKI, Mariah	c	2-2	0-0	2-4	0-0	0-0	2	0	2	1	6	1	1	0	2	23	
05	DAVID, Dria	g	0-2	0-1	0-0	0-0	0-0	0	0	0	1	0	0	3	0	0	11	
20	FOTHERGILL, Devin	g	2-5	1-3	0-0	0-0	0-0	0	1	1	1	5	0	7	0	0	27	
24	STEVENS, Kristen	g	2-8	0-4	0-0	0-0	0-0	0	0	0	1	4	1	4	0	4	32	
11	PARKER, Chelsea		0-4	0-3	2-2	0-0	0-0	0	0	0	2	2	0	5	0	1	23	
12	MILLS, Amanda		1-8	0-7	0-0	0-0	0-0	0	1	1	0	2	5	2	0	1	26	
14	BROWN, Brittany		1-1	0-0	0-0	0-0	0-0	0	2	2	3	2	0	2	1	0	13	
22	BURNSIDE, Shonda		2-4	0-0	1-2	0-0	0-0	1	2	3	1	5	0	2	0	0	11	
23	SMITH, Lea		0-2	0-0	1-2	0-0	0-0	0	1	1	4	1	0	0	0	2	19	
Team								3	2	5				2				
Totals			10-36	1-18	6-10	0-0	0-0	8	10	18	16	27	7	30	1	10	200	

FG % 1st Half: 5-17 29.4% 2nd half: 5-19 26.3% Game: 10-36 27.8% Deadball Rebounds  
 3FG % 1st Half: 0-9 0.0% 2nd half: 1-9 11.1% Game: 1-18 5.6%  
 FT % 1st Half: 0-2 0.0% 2nd half: 6-8 75.0% Game: 6-10 60.0% 1

**Liberty 73 • 11-4, 2-1 BSC**

#	Player		Total			3-Ptr			Rebounds			PF	TP	A	TO	Blk	Stl	Min
			FG-FGA	FG-FGA	FT-FTA	FG-FGA	FG-FGA	FT-FTA	Off	Def	Tot							
11	ANTIC, Jelena	f	7-7	0-0	0-0	0-0	0-0	1	2	3	1	14	1	3	0	3	24	
23	WARLEY, Avery	f	1-2	0-0	4-7	0-0	0-0	2	0	2	2	6	0	3	0	1	25	
21	MAYS, Amber	g	4-6	0-0	0-0	0-0	0-0	0	2	2	1	8	6	1	0	2	21	
32	McLEOD, Rachel	g	4-6	1-1	2-2	0-0	0-0	1	2	3	1	11	1	0	0	2	20	
40	BROWN, Devon	g	5-8	3-5	0-0	0-0	0-0	1	4	5	1	13	3	1	1	2	21	
01	WASHINGTON, LaKendra		3-5	0-2	0-0	0-0	0-0	1	2	3	1	6	0	5	0	2	20	
12	DALE, Danika		2-6	1-3	0-0	0-0	0-0	2	3	5	2	5	1	3	0	1	18	
15	BEECHER, Kylee		1-1	0-0	3-6	0-0	0-0	0	3	3	0	5	1	2	0	1	18	
25	MORGAN, Dymond		2-3	0-0	1-1	0-0	0-0	0	0	0	0	5	4	2	0	5	18	
54	COY, Carra		0-1	0-0	0-1	0-0	0-0	1	1	2	1	0	0	1	1	0	15	
Team								2	2	4								
Totals			29-45	5-11	10-17	0-0	0-0	11	21	32	10	73	17	21	2	19	200	

FG % 1st Half: 15-23 65.2% 2nd half: 14-22 63.6% Game: 29-45 64.4% Deadball Rebounds  
 3FG % 1st Half: 3-5 60.0% 2nd half: 2-6 33.3% Game: 5-11 45.5%  
 FT % 1st Half: 3-4 75.0% 2nd half: 7-13 53.8% Game: 10-17 58.8% 2

Officials: Dan Outlaw (R), Kristi Vera, Margo Riddle  
 Technical fouls: Presbyterian College-None. Liberty-None.  
 Attendance: 688

Score by periods	1st	2nd	Total
Presbyterian College	10	17	27
Liberty	36	37	73

	In	Off	2nd	Fast	
Points	Paint	T/O	Chance	Break	Bench
PC	12	6	4	0	12
LIBERTY	38	39	7	18	21

Last FG - PC 2nd-02:42, LIBERTY 2nd-02:12.  
 Largest lead - PC None, LIBERTY by 49 2nd-03:15.

Score tied - 0 times.  
 Lead changed - 0 times.



**2009-10 Liberty Women's Basketball**  
**Liberty Game-by-Game Highs (as of Mar 01, 2010)**  
**All games**



Opponent	Date	Score	Points	Rebounds	Assists	Steals	Blocked shots
WINSTON-SALEM STATE	11-13-09	71-26	26-BROWN, Devon	9-WARLEY, Avery	6-MAYS, Amber	5-WASHINGTON, La	2-DALE, Danika
UNC GREENSBORO	11-17-09	60-42	26-BROWN, Devon	9-BROWN, Devon	4-MAYS, Amber	4-MAYS, Amber	2-COY, Carra DALE, Danika
vs Tulane	11-20-09	63-52	18-BROWN, Devon	12-BROWN, Devon	3-MAYS, Amber	4-MAYS, Amber	2-BROWN, Devon
at Navy	11-21-09	55-43	19-BROWN, Devon	11-BROWN, Devon	5-MAYS, Amber	5-BROWN, Devon	None
at Lafayette	11-28-09	90-55	21-WASHINGTON, La	11-WARLEY, Avery	4-BROWN, Devon MAYS, Amber	4-WASHINGTON, La MAYS, Amber	1-BEECHER, Kylee
JAMES MADISON	12-01-09	50-60	14-MAYS, Amber	13-BROWN, Devon	2-MAYS, Amber WARLEY, Avery	2-BEECHER, Kylee	2-DALE, Danika
GLENVILLE STATE	12-05-09	86-45	20-BROWN, Devon	10-ANTIC, Jelena	7-McLEOD, Rachel MORGAN, Dymond	3-DALE, Danika	1-WARLEY, Avery COY, Carra
at Auburn	12-15-09	64-70	19-BROWN, Devon	8-BROWN, Devon	3-MAYS, Amber	4-MAYS, Amber	1-BROWN, Devon
vs Cornell	12-28-09	70-40	18-BROWN, Devon	8-ANTIC, Jelena	8-MAYS, Amber	4-MAYS, Amber	1-COY, Carra WARLEY, Avery BROWN, Devon WASHINGTON, LaK
at Virginia	12-29-09	54-63	12-WARLEY, Avery	8-WARLEY, Avery	3-ANTIC, Jelena MAYS, Amber	3-BROWN, Devon MAYS, Amber	2-BROWN, Devon
at Gardner-Webb	01-02-10	65-70	10-DALE, Danika ANTIC, Jelena MAYS, Amber WARLEY, Avery	11-BROWN, Devon	6-MAYS, Amber	3-BROWN, Devon WARLEY, Avery	1-WARLEY, Avery
NORTH CAROLINA A&T	01-05-10	57-51	17-BROWN, Devon	13-BROWN, Devon	4-ANTIC, Jelena	3-MORGAN, Dymond	1-BEECHER, Kylee BROWN, Devon ANTIC, Jelena
WINTHROP	01-09-10	67-38	21-BROWN, Devon	6-BROWN, Devon ANTIC, Jelena	10-MAYS, Amber	3-WASHINGTON, La	1-WARLEY, Avery BEECHER, Kylee COY, Carra
LONGWOOD	01-12-10	78-55	19-ANTIC, Jelena	13-BROWN, Devon	4-McLEOD, Rachel	5-MAYS, Amber	2-BROWN, Devon
PRESBYTERIAN COLLEGE	01-16-10	73-27	14-ANTIC, Jelena	5-BROWN, Devon DALE, Danika	6-MAYS, Amber	5-MORGAN, Dymond	1-BROWN, Devon COY, Carra
UNC ASHEVILLE	01-18-10	82-40	14-BEECHER, Kylee MAYS, Amber	10-WARLEY, Avery	6-MORGAN, Dymond	4-WASHINGTON, La McLEOD, Rachel MORGAN, Dymond	3-WARLEY, Avery
at Charleston Southern	01-23-10	65-52	18-WARLEY, Avery	16-WARLEY, Avery	4-BROWN, Devon	3-BROWN, Devon	1-MAYS, Amber
at Coastal Carolina	01-25-10	57-38	17-BROWN, Devon	12-WARLEY, Avery	2-McLEOD, Rachel MAYS, Amber DALE, Danika	4-BROWN, Devon	1-WARLEY, Avery BROWN, Devon DALE, Danika
at High Point	01-30-10	75-62	29-BROWN, Devon	14-WARLEY, Avery	2-MAYS, Amber BEECHER, Kylee McLEOD, Rachel BROWN, Devon	3-MORGAN, Dymond	2-BROWN, Devon
at Radford	02-01-10	63-45	20-BROWN, Devon	11-BROWN, Devon	7-MAYS, Amber	3-BROWN, Devon MAYS, Amber BEECHER, Kylee MORGAN, Dymond	2-WARLEY, Avery DALE, Danika
N.C. CENTRAL	02-04-10	64-44	16-WARLEY, Avery	11-WARLEY, Avery	8-MAYS, Amber	3-WASHINGTON, La	1-WASHINGTON, La WARLEY, Avery DALE, Danika
GARDNER-WEBB	02-08-10	56-59	15-WARLEY, Avery	13-BROWN, Devon	3-MAYS, Amber McLEOD, Rachel	2-McLEOD, Rachel BROWN, Devon MAYS, Amber	2-WARLEY, Avery
at Winthrop	02-15-10	52-18	15-BROWN, Devon	8-WARLEY, Avery	2-BROWN, Devon	3-WASHINGTON, La	3-WARLEY, Avery





2009-10 Liberty Women's Basketball  
Liberty Game-by-Game Highs (as of Mar 01, 2010)  
All games



Opponent	Date	Score	Points	Rebounds	Assists	Steals	Blocked shots
COASTAL CAROLINA	02-20-10	57-55	14-BROWN, Devon	8-WARLEY, Avery	3-McLEOD, Rachel	McLEOD, Rachel 5-BROWN, Devon	1-WARLEY, Avery
CHARLESTON SOUTHERN	02-22-10	66-56	22-WARLEY, Avery	12-BROWN, Devon	3-ANTIC, Jelena	3-WARLEY, Avery MORGAN, Dymond	1-BROWN, Devon
at UNC Asheville	02-27-10	94-66	22-WARLEY, Avery	10-WARLEY, Avery	5-MORGAN, Dymond	3-WASHINGTON, La MAYS, Amber BROWN, Devon	None



**2009-10 Liberty Women's Basketball**  
**Liberty Points-Rebounds-Assists (as of Mar 01, 2010)**  
**All games**



Opponent	Date	Score		01	11	12	15	21	23	25
				WASHINGTON	ANTIC,JELE	DALE,DANIK	BEECHER,KY	MAYS,AMBER	WARLEY,AVE	MORGAN,DYM
WINSTON-SALEM STATE	11-13-09	71-26	w	9-2-1	DNP	6-7-3	8-2-2	7-0-6	4-9-2	0-4-1
UNC GREENSBORO	11-17-09	60-42	w	2-0-0	DNP	0-4-0	11-5-0	11-1-4	0-7-0	6-5-2
vs Tulane	11-20-09	63-52	w	2-1-0	DNP	0-1-1	6-3-2	10-2-3	9-11-1	9-2-0
at Navy	11-21-09	55-43	w	6-4-0	0-5-3	0-2-1	4-2-0	8-2-5	10-6-0	2-3-0
at Lafayette	11-28-09	90-55	w	21-0-2	4-4-2	6-4-1	5-3-2	11-4-4	19-11-0	1-0-0
JAMES MADISON	12-01-09	50-60	L	2-1-0	1-4-0	3-5-1	4-6-1	14-2-2	9-7-2	0-0-0
GLENVILLE STATE	12-05-09	86-45	w	8-5-2	12-10-0	6-9-3	14-6-0	5-2-4	7-6-0	6-7-7
at Auburn	12-15-09	64-70	L	2-1-0	4-3-1	0-0-0	7-0-1	18-1-3	10-6-0	2-2-0
vs Cornell	12-28-09	70-40	w	9-5-2	11-8-2	5-7-2	5-3-0	4-2-8	10-7-0	2-1-1
at Virginia	12-29-09	54-63	L	5-5-1	5-3-3	3-4-0	6-2-0	7-0-3	12-8-0	2-1-0
at Gardner-Webb	01-02-10	65-70	L	0-0-0	10-5-1	10-0-1	4-3-0	10-5-6	10-6-0	6-1-1
NORTH CAROLINA A&T	01-05-10	57-51	w	0-2-0	14-4-4	2-2-1	0-3-0	4-2-3	9-11-0	5-0-1
WINTHROP	01-09-10	67-38	w	5-1-1	9-6-1	4-5-3	5-2-2	3-0-10	5-5-1	11-1-1
LONGWOOD	01-12-10	78-55	w	1-2-1	19-10-2	2-4-1	10-6-1	7-0-3	12-5-1	6-3-3
PRESBYTERIAN COLLEGE	01-16-10	73-27	w	6-3-0	14-3-1	5-5-1	5-3-1	8-2-6	6-2-0	5-0-4
UNC ASHEVILLE	01-18-10	82-40	w	6-1-0	7-4-0	5-3-1	14-5-2	14-1-5	6-10-2	6-2-6
at Charleston Southern	01-23-10	65-52	w	4-1-0	DNP	3-4-2	10-9-0	14-0-3	18-16-0	2-1-0
at Coastal Carolina	01-25-10	57-38	w	7-1-0	DNP	0-4-2	6-9-1	8-2-2	15-12-0	2-0-1
at High Point	01-30-10	75-62	w	0-0-0	DNP	2-2-0	3-4-2	7-5-2	26-14-0	6-0-1
at Radford	02-01-10	63-45	w	0-0-1	DNP	2-1-0	13-9-0	10-1-7	4-5-0	5-3-1
N.C. CENTRAL	02-04-10	64-44	w	6-2-2	DNP	15-3-2	3-2-4	8-2-8	16-11-0	0-1-1
GARDNER-WEBB	02-08-10	56-59	L	0-0-1	DNP	6-0-0	4-4-2	6-1-3	15-10-0	3-0-1
at Winthrop	02-15-10	52-18	w	2-2-1	DNP	11-5-0	9-5-1	1-1-1	4-8-1	5-1-1
COASTAL CAROLINA	02-20-10	57-55	w	4-1-0	2-3-1	5-0-0	9-1-0	12-3-2	5-8-1	3-1-1
CHARLESTON SOUTHERN	02-22-10	66-56	w	0-1-0	4-6-3	1-0-0	4-2-1	6-0-0	22-10-1	5-1-2
at UNC Asheville	02-27-10	94-66	w	12-0-4	13-5-2	10-4-3	12-9-0	6-2-2	22-10-0	2-0-5

Opponent	Date	Score		32	40	54
				MCLEOD,RAC	BROWN,DEVO	COY,CARRA
WINSTON-SALEM STATE	11-13-09	71-26	w	8-1-2	26-7-1	3-1-0
UNC GREENSBORO	11-17-09	60-42	w	2-1-2	26-9-2	2-4-0
vs Tulane	11-20-09	63-52	w	9-2-2	18-12-1	DNP
at Navy	11-21-09	55-43	w	6-2-0	19-11-2	DNP
at Lafayette	11-28-09	90-55	w	4-1-0	17-3-4	2-1-0
JAMES MADISON	12-01-09	50-60	L	8-1-0	9-13-0	0-1-0
GLENVILLE STATE	12-05-09	86-45	w	6-2-7	20-9-2	2-4-0
at Auburn	12-15-09	64-70	L	2-1-1	19-8-0	DNP
vs Cornell	12-28-09	70-40	w	3-0-0	18-6-1	3-2-0
at Virginia	12-29-09	54-63	L	5-2-0	9-6-0	DNP
at Gardner-Webb	01-02-10	65-70	L	6-8-2	9-11-0	0-1-0
NORTH CAROLINA A&T	01-05-10	57-51	w	4-2-1	17-13-3	2-0-0
WINTHROP	01-09-10	67-38	w	4-3-2	21-6-1	0-3-0
LONGWOOD	01-12-10	78-55	w	5-2-4	16-13-3	0-1-0
PRESBYTERIAN COLLEGE	01-16-10	73-27	w	11-3-1	13-5-3	0-2-0
UNC ASHEVILLE	01-18-10	82-40	w	10-5-3	12-8-2	2-1-0
at Charleston Southern	01-23-10	65-52	w	3-2-1	11-6-4	0-1-0
at Coastal Carolina	01-25-10	57-38	w	2-3-2	17-10-1	DNP
at High Point	01-30-10	75-62	w	2-1-2	29-11-2	0-0-0
at Radford	02-01-10	63-45	w	9-1-2	20-11-1	0-1-0
N.C. CENTRAL	02-04-10	64-44	w	6-4-1	10-6-0	0-0-0
GARDNER-WEBB	02-08-10	56-59	L	9-2-3	13-13-1	DNP
at Winthrop	02-15-10	52-18	w	3-4-1	15-5-2	2-4-0
COASTAL CAROLINA	02-20-10	57-55	w	0-2-3	14-6-1	3-3-1
CHARLESTON SOUTHERN	02-22-10	66-56	w	4-2-1	20-12-2	0-0-0
at UNC Asheville	02-27-10	94-66	w	2-1-4	12-5-2	3-4-0



2009-10 Liberty Women's Basketball  
Liberty Player High/Low Analysis (as of Mar 01, 2010)  
All games



Liberty - INDIVIDUAL GAME HIGHS

Points	29		BROWN, Devon at High Point (01-30-10)
	26		WARLEY, Avery at High Point (01-30-10)
	26		BROWN, Devon vs UNC Greensboro (11-17-09)
	26		BROWN, Devon vs Winston-Salem State (11-13-09)
	22		WARLEY, Avery at UNC Asheville (02-27-10)
	22		WARLEY, Avery vs Charleston Southern (02-22-10)
Field Goals Made	12		BROWN, Devon at High Point (01-30-10)
	11		BROWN, Devon vs UNC Greensboro (11-17-09)
Field Goal Att.	11		BROWN, Devon vs Winston-Salem State (11-13-09)
	18		BROWN, Devon vs Gardner-Webb (02-08-10)
	17		BROWN, Devon at High Point (01-30-10)
FG Pct (min 5 made)	17		BROWN, Devon vs Longwood (01-12-10)
	1.000	(9-9)	WARLEY, Avery vs Charleston Southern (02-22-10)
	1.000	(7-7)	ANTIC, Jelena vs Presbyterian College (01-16-10)
3-Point FG Made	3		BROWN, Devon vs Presbyterian College (01-16-10)
	3		BROWN, Devon at Navy (11-21-09)
	3		BROWN, Devon vs Tulane (11-20-09)
	3		BROWN, Devon vs Winston-Salem State (11-13-09)
3-Point FG Att.	6		BROWN, Devon vs Charleston Southern (02-22-10)
	6		BROWN, Devon vs Winthrop (01-09-10)
	6		BROWN, Devon at Virginia (12-29-09)
	6		WASHINGTON, LaKendra vs Winston-Salem State (11-13-09)
3-Pt FG Pct (min 2 made)	1.000	(2-2)	BROWN, Devon at UNC Asheville (02-27-10)
	1.000	(2-2)	WASHINGTON, LaKendra at Coastal Carolina (01-25-10)
	1.000	(2-2)	MAYS, Amber vs UNC Asheville (01-18-10)
	1.000	(2-2)	ANTIC, Jelena at Gardner-Webb (01-02-10)
Free Throws Made	8		BROWN, Devon at Radford (02-01-10)
	8		WARLEY, Avery at High Point (01-30-10)
	8		BEECHER, Kylee vs UNC Asheville (01-18-10)
	8		BROWN, Devon at Navy (11-21-09)
Free Throw Att.	11		WARLEY, Avery at High Point (01-30-10)
	10		BEECHER, Kylee vs UNC Asheville (01-18-10)
FT Pct (min 3 made)	1.000	(6-6)	BROWN, Devon vs Longwood (01-12-10)
	1.000	(4-4)	BEECHER, Kylee vs Charleston Southern (02-22-10)
	1.000	(4-4)	BROWN, Devon at Coastal Carolina (01-25-10)
	1.000	(4-4)	BROWN, Devon at Gardner-Webb (01-02-10)
	1.000	(4-4)	DALE, Danika vs Winston-Salem State (11-13-09)
	1.000	(4-4)	BEECHER, Kylee vs Winston-Salem State (11-13-09)
	1.000	(3-3)	DALE, Danika at Winthrop (02-15-10)
	1.000	(3-3)	BROWN, Devon vs Winthrop (01-09-10)
	1.000	(3-3)	BROWN, Devon at Auburn (12-15-09)
1.000	(3-3)	WARLEY, Avery at Lafayette (11-28-09)	
Rebounds	16		WARLEY, Avery at Charleston Southern (01-23-10)
	14		WARLEY, Avery at High Point (01-30-10)
Assists	10		MAYS, Amber vs Winthrop (01-09-10)
	8		MAYS, Amber vs N.C. Central (02-04-10)
	8		MAYS, Amber vs Cornell (12-28-09)
Steals	5		BROWN, Devon vs Coastal Carolina (02-20-10)
	5		MORGAN, Dymond vs Presbyterian College (01-16-10)
	5		MAYS, Amber vs Longwood (01-12-10)
	5		BROWN, Devon at Navy (11-21-09)
	5		WASHINGTON, LaKendra vs Winston-Salem State (11-13-09)
Blocked Shots	3		WARLEY, Avery at Winthrop (02-15-10)

	3	WARLEY, Avery vs UNC Asheville (01-18-10)
Turnovers	8	MORGAN, Dymond vs Glenville State (12-05-09)
	7	MAYS, Amber at Virginia (12-29-09)
Fouls	5	WARLEY, Avery vs Gardner-Webb (02-08-10)
	5	MAYS, Amber at High Point (01-30-10)
	5	WARLEY, Avery vs Longwood (01-12-10)
	5	ANTIC, Jelena at Gardner-Webb (01-02-10)
	5	WARLEY, Avery at Gardner-Webb (01-02-10)
	5	MAYS, Amber at Virginia (12-29-09)
	5	WARLEY, Avery vs James Madison (12-01-09)
	5	WASHINGTON, LaKendra vs UNC Greensboro (11-17-09)





2009-10 Liberty Women's Basketball  
Liberty Opponent High/Low Analysis (as of Mar 01, 2010)  
All games



OPPONENT INDIVIDUAL GAME HIGHS

Points	22		Jackson, Lauren at Lafayette (11-28-09)
	20		MOSS, Sydnei at Coastal Carolina (01-25-10)
	19		WASMER, Kelsey vs Charleston Southern (02-22-10)
	19		MOSS, Sydnei vs Coastal Carolina (02-20-10)
	19		STULL, Amanda vs Coastal Carolina (02-20-10)
	19		Wright, Monica at Virginia (12-29-09)
Field Goals Made	7		MOSS, Sydnei vs Coastal Carolina (02-20-10)
	7		Wright, Monica at Virginia (12-29-09)
Field Goal Att.	20		MILLER, Joanna vs N.C. Central (02-04-10)
	17		MOSS, Sydnei at Coastal Carolina (01-25-10)
FG Pct (min 5 made)	.833	(5-6)	BROWN, Shamia at High Point (01-30-10)
	.833	(5-6)	SAMS, Jaleesa vs North Carolina A&T (01-05-10)
	.833	(5-6)	McCall, Telia at Virginia (12-29-09)
3-Point FG Made	5		STULL, Amanda vs Coastal Carolina (02-20-10)
	4		WASMER, Kelsey vs Charleston Southern (02-22-10)
	4		TERRY, Helen vs Charleston Southern (02-22-10)
	4		MOSS, Sydnei at Coastal Carolina (01-25-10)
	4		Smalley, Alli at Auburn (12-15-09)
	4		KALJO, Indira vs Tulane (11-20-09)
3-Point FG Att.	12		KALJO, Indira vs Tulane (11-20-09)
	11		Autumn Davis vs Glenville State (12-05-09)
3-Pt FG Pct (min 2 made)	1.000	(3-3)	HUDSON, Dominique vs Gardner-Webb (02-08-10)
	1.000	(2-2)	BLANKS, Shanise vs N.C. Central (02-04-10)
Free Throws Made	7		HUDSON, Monique at Gardner-Webb (01-02-10)
	7		Greenleaf, Jordan at Auburn (12-15-09)
	7		Hislop, Tarik vs James Madison (12-01-09)
	7		Jackson, Lauren at Lafayette (11-28-09)
Free Throw Att.	9		Hislop, Tarik vs James Madison (12-01-09)
	8		FIELDS, Frances at High Point (01-30-10)
	8		TERRY, Helen at Charleston Southern (01-23-10)
	8		MONTGOMERY, Lindsey vs UNC Asheville (01-18-10)
	8		HUDSON, Monique at Gardner-Webb (01-02-10)
	8		Greenleaf, Jordan at Auburn (12-15-09)
	8		Jackson, Lauren at Lafayette (11-28-09)
FT Pct (min 3 made)	1.000	(6-6)	ERWINSPENCER, Da'Nar at Radford (02-01-10)
	1.000	(4-4)	MONTGOMERY, Lindsey at UNC Asheville (02-27-10)
	1.000	(4-4)	STULL, Amanda vs Coastal Carolina (02-20-10)
	1.000	(4-4)	MOSS, Sydnei at Coastal Carolina (01-25-10)
	1.000	(4-4)	SCHWAGMEYER, Ali at Charleston Southern (01-23-10)
	1.000	(4-4)	HUDSON, Dominique at Gardner-Webb (01-02-10)
	1.000	(3-3)	RYSKA, Kathi at Winthrop (02-15-10)
Rebounds	10		MONTGOMERY, Lindsey at UNC Asheville (02-27-10)
	9		Consedine, Cassie at Navy (11-21-09)
Assists	9		HUDSON, Dominique at Gardner-Webb (01-02-10)
	8		SHEPARD, Kendall at UNC Asheville (02-27-10)
Steals	10		Wright, Monica at Virginia (12-29-09)
	5		SHEPARD, Kendall vs UNC Asheville (01-18-10)
	5		Kellum, Paulisha at Virginia (12-29-09)
Blocked Shots	4		MONTGOMERY, Lindsey at UNC Asheville (02-27-10)
	3		WHITE, Katie at Coastal Carolina (01-25-10)
	3		POPE, LaTroya at Gardner-Webb (01-02-10)
Turnovers	9		MILLER, Joanna vs N.C. Central (02-04-10)
	9		ERWINSPENCER, Da'Nar at Radford (02-01-10)

Fouls

9 Becky Fernandes vs Longwood (01-12-10)  
9 Benson, Lauren vs Cornell (12-28-09)  
5 MONTGOMERY, Lindsey at UNC Asheville (02-27-10)  
5 RILES, Kelli at UNC Asheville (02-27-10)  
5 WASMER, Kelsey vs Charleston Southern (02-22-10)  
5 WHITE, Chanel at Winthrop (02-15-10)  
5 RILES, Kelli vs UNC Asheville (01-18-10)  
5 Morgan Smith vs Longwood (01-12-10)  
5 HUDSON, Dominique at Gardner-Webb (01-02-10)  
5 POPE, LaTroya at Gardner-Webb (01-02-10)  
5 Myers, Angela at Navy (11-21-09)  
5 BROWN, Chassity vs Tulane (11-20-09)  
5 RECTOR,Rene vs Winston-Salem State (11-13-09)



2009-10 Liberty Women's Basketball  
Liberty Team High/Low Analysis (as of Mar 01, 2010)  
All games



Liberty - TEAM GAME HIGHS

POINTS	94	at UNC Asheville (02-27-10)
	90	at Lafayette (11-28-09)
	86	GLENVILLE STATE (12-05-09)
	82	UNC ASHEVILLE (01-18-10)
	78	LONGWOOD (01-12-10)
FIELD GOALS MADE	37	at Lafayette (11-28-09)
	35	GLENVILLE STATE (12-05-09)
FIELD GOAL ATTEMPTS	71	at UNC Asheville (02-27-10)
	63	UNC ASHEVILLE (01-18-10)
FIELD GOAL PERCENTAGE	.644 (29-45)	PRESBYTERIAN COLLEGE (01-16-10)
	.617 (37-60)	at Lafayette (11-28-09)
3 PT FIELD GOALS MADE	9	UNC ASHEVILLE (01-18-10)
	6	at UNC Asheville (02-27-10)
3 PT FG ATTEMPTS	17	UNC ASHEVILLE (01-18-10)
	14	WINSTON-SALEM STATE (11-13-09)
3 PT FG PERCENTAGE	.667 (4-6)	vs Tulane (11-20-09)
	.545 (6-11)	at UNC Asheville (02-27-10)
FREE THROWS MADE	26	at High Point (01-30-10)
	22	at UNC Asheville (02-27-10)
FREE THROW ATTEMPTS	40	at UNC Asheville (02-27-10)
	35	at High Point (01-30-10)
FREE THROW PERCENTAGE	.923 (12-13)	at Auburn (12-15-09)
	.800 (8-10)	at Virginia (12-29-09)
REBOUNDS	67	GLENVILLE STATE (12-05-09)
	54	LONGWOOD (01-12-10)
ASSISTS	25	GLENVILLE STATE (12-05-09)
	22	at UNC Asheville (02-27-10)
STEALS	22	WINTHROP (01-09-10)
	19	PRESBYTERIAN COLLEGE (01-16-10)
BLOCKED SHOTS	18	UNC ASHEVILLE (01-18-10)
	6	UNC ASHEVILLE (01-18-10)
TURNOVERS	5	at Winthrop (02-15-10)
	33	GLENVILLE STATE (12-05-09)
FOULS	30	at Virginia (12-29-09)
	27	at Gardner-Webb (01-02-10)
	23	JAMES MADISON (12-01-09)
	23	at Lafayette (11-28-09)



2009-10 Liberty Women's Basketball  
Liberty High/Low Analysis (as of Mar 01, 2010)  
All games



Opponent - GAME HIGHS

POINTS	70		at Gardner-Webb (01-02-10)
	70		at Auburn (12-15-09)
	66		at UNC Asheville (02-27-10)
	63		at Virginia (12-29-09)
	62		at High Point (01-30-10)
FIELD GOALS MADE	24		at Auburn (12-15-09)
	23		GARDNER-WEBB (02-08-10)
FIELD GOAL ATTEMPTS	78		GLENVILLE STATE (12-05-09)
	54		JAMES MADISON (12-01-09)
FIELD GOAL PERCENTAGE	.523	(23-44)	GARDNER-WEBB (02-08-10)
	.480	(24-50)	at Auburn (12-15-09)
3 PT FIELD GOALS MADE	10		CHARLESTON SOUTHERN (02-22-10)
	9		COASTAL CAROLINA (02-20-10)
3 PT FG ATTEMPTS	49		GLENVILLE STATE (12-05-09)
	30		at Charleston Southern (01-23-10)
3 PT FG PERCENTAGE	.600	(3-5)	at Lafayette (11-28-09)
	.500	(9-18)	COASTAL CAROLINA (02-20-10)
FREE THROWS MADE	26		at Gardner-Webb (01-02-10)
	20		at Lafayette (11-28-09)
FREE THROW ATTEMPTS	36		at Gardner-Webb (01-02-10)
	32		JAMES MADISON (12-01-09)
FREE THROW PERCENTAGE	1.000	(6-6)	at Coastal Carolina (01-25-10)
	.818	(18-22)	at Charleston Southern (01-23-10)
REBOUNDS	41		JAMES MADISON (12-01-09)
	35		UNC GREENSBORO (11-17-09)
ASSISTS	17		at Gardner-Webb (01-02-10)
	16		vs Tulane (11-20-09)
STEALS	19		at Virginia (12-29-09)
	15		GLENVILLE STATE (12-05-09)
BLOCKED SHOTS	5		at UNC Asheville (02-27-10)
	5		at Coastal Carolina (01-25-10)
TURNOVERS	32		WINSTON-SALEM STATE (11-13-09)
	30		PRESBYTERIAN COLLEGE (01-16-10)
FOULS	27		at UNC Asheville (02-27-10)
	25		at High Point (01-30-10)





2009-10 Liberty Women's Basketball  
Liberty High/Low Analysis (as of Mar 01, 2010)  
All games



Liberty - GAME LOWS

POINTS	50	JAMES MADISON (12-01-09)
	52	at Winthrop (02-15-10)
	54	at Virginia (12-29-09)
	55	at Navy (11-21-09)
	56	GARDNER-WEBB (02-08-10)
FIELD GOALS MADE	18	JAMES MADISON (12-01-09)
	19	at Navy (11-21-09)
FIELD GOAL ATTEMPTS	41	at Radford (02-01-10)
	44	CHARLESTON SOUTHERN (02-22-10)
FIELD GOAL PERCENTAGE	.305 (18-59)	JAMES MADISON (12-01-09)
	.385 (20-52)	at Coastal Carolina (01-25-10)
3 PT FIELD GOALS MADE	0	GLENVILLE STATE (12-05-09)
	0	at Radford (02-01-10)
	0	COASTAL CAROLINA (02-20-10)
3 PT FG ATTEMPTS	1	GLENVILLE STATE (12-05-09)
	3	at Radford (02-01-10)
3 PT FG PERCENTAGE	.000 (0-1)	GLENVILLE STATE (12-05-09)
	.000 (0-3)	at Radford (02-01-10)
	.000 (0-5)	COASTAL CAROLINA (02-20-10)
FREE THROWS MADE	8	at Virginia (12-29-09)
	8	WINTHROP (01-09-10)
	8	N.C. CENTRAL (02-04-10)
FREE THROW ATTEMPTS	10	at Virginia (12-29-09)
	11	WINTHROP (01-09-10)
FREE THROW PERCENTAGE	.455 (10-22)	UNC GREENSBORO (11-17-09)
	.524 (11-21)	vs Cornell (12-28-09)
REBOUNDS	23	at Auburn (12-15-09)
	28	COASTAL CAROLINA (02-20-10)
ASSISTS	6	JAMES MADISON (12-01-09)
	6	at Auburn (12-15-09)
STEALS	6	JAMES MADISON (12-01-09)
	6	N.C. CENTRAL (02-04-10)
BLOCKED SHOTS	0	at Navy (11-21-09)
	0	at UNC Asheville (02-27-10)
TURNOVERS	13	at Coastal Carolina (01-25-10)
	14	at Lafayette (11-28-09)
	14	at High Point (01-30-10)
	14	COASTAL CAROLINA (02-20-10)
	14	at UNC Asheville (02-27-10)
FOULS	10	PRESBYTERIAN COLLEGE (01-16-10)
	11	UNC ASHEVILLE (01-18-10)



**2009-10 Liberty Women's Basketball**  
**Liberty High/Low Analysis (as of Mar 01, 2010)**  
**All games**



**Opponent - GAME LOWS**

POINTS	18		at Winthrop (02-15-10)
	26		WINSTON-SALEM STATE (11-13-09)
	27		PRESBYTERIAN COLLEGE (01-16-10)
	38		WINTHROP (01-09-10)
	38		at Coastal Carolina (01-25-10)
FIELD GOALS MADE	5		at Winthrop (02-15-10)
	10		PRESBYTERIAN COLLEGE (01-16-10)
FIELD GOAL ATTEMPTS	36		PRESBYTERIAN COLLEGE (01-16-10)
	39		at Lafayette (11-28-09)
FIELD GOAL PERCENTAGE	.119	(5-42)	at Winthrop (02-15-10)
	.192	(15-78)	GLENVILLE STATE (12-05-09)
3 PT FIELD GOALS MADE	0		at Winthrop (02-15-10)
	1		WINSTON-SALEM STATE (11-13-09)
	1		PRESBYTERIAN COLLEGE (01-16-10)
3 PT FG ATTEMPTS	5		at Lafayette (11-28-09)
	7		at Virginia (12-29-09)
3 PT FG PERCENTAGE	.000	(0-14)	at Winthrop (02-15-10)
	.056	(1-18)	PRESBYTERIAN COLLEGE (01-16-10)
FREE THROWS MADE	3		WINSTON-SALEM STATE (11-13-09)
	5		vs Tulane (11-20-09)
FREE THROW ATTEMPTS	5		WINSTON-SALEM STATE (11-13-09)
	6		at Coastal Carolina (01-25-10)
FREE THROW PERCENTAGE	.421	(8-19)	UNC GREENSBORO (11-17-09)
	.500	(5-10)	vs Tulane (11-20-09)
	.500	(8-16)	NORTH CAROLINA A&T (01-05-10)
REBOUNDS	16		CHARLESTON SOUTHERN (02-22-10)
	18		PRESBYTERIAN COLLEGE (01-16-10)
ASSISTS	2		at Winthrop (02-15-10)
	5		WINSTON-SALEM STATE (11-13-09)
STEALS	2		at Lafayette (11-28-09)
	2		at High Point (01-30-10)
BLOCKED SHOTS	0		WINSTON-SALEM STATE (11-13-09)
	0		at Navy (11-21-09)
	0		vs Cornell (12-28-09)
	0		WINTHROP (01-09-10)
	0		COASTAL CAROLINA (02-20-10)
	0		CHARLESTON SOUTHERN (02-22-10)
TURNOVERS	13		at Gardner-Webb (01-02-10)
	15		JAMES MADISON (12-01-09)
	15		at Charleston Southern (01-23-10)
FOULS	13		WINSTON-SALEM STATE (11-13-09)
	13		at Auburn (12-15-09)
	13		N.C. CENTRAL (02-04-10)



**2009-10 Liberty Women's Basketball**  
**Liberty Team Game-by-Game (as of Mar 01, 2010)**  
**All games**



TEAM STATISTICS

Opponent	Date	Score		Total		3-Pointers		Free throws		Rebounds				pf	a	t/o	blk	stl	pts	avg
				fg-fga	pct	3fg-fga	pct	ft-fa	pct	off	def	tot	avg							
WINSTON-SALEM STATE	11-13-09	71-26	W	27-57	.474	4-14	.286	13-17	.765	16	23	39	39.0	15	18	19	4	15	71	71.0
UNC GREENSBORO	11-17-09	60-42	W	24-49	.490	2-9	.222	10-22	.455	13	27	40	39.5	17	10	19	4	14	60	65.5
vs Tulane	11-20-09	63-52	W	24-47	.511	4-6	.667	11-19	.579	15	23	38	39.0	16	10	24	3	11	63	64.7
at Navy	11-21-09	55-43	W	19-48	.396	3-8	.375	14-21	.667	17	23	40	39.2	14	11	18	0	7	55	62.2
at Lafayette	11-28-09	90-55	W	37-60	.617	3-6	.500	13-20	.650	15	18	33	38.0	23	15	14	1	14	90	67.8
JAMES MADISON	12-01-09	50-60	L	18-59	.305	1-9	.111	13-17	.765	14	32	46	39.3	23	6	20	3	6	50	64.8
GLENVILLE STATE	12-05-09	86-45	W	35-57	.614	0-1	.000	16-28	.571	18	49	67	43.3	17	25	33	2	11	86	67.9
at Auburn	12-15-09	64-70	L	25-51	.490	2-7	.286	12-13	.923	6	17	23	40.8	18	6	16	1	8	64	67.4
vs Cornell	12-28-09	70-40	W	28-53	.528	3-11	.273	11-21	.524	16	27	43	41.0	18	16	22	4	12	70	67.7
at Virginia	12-29-09	54-63	L	22-54	.407	2-11	.182	8-10	.800	16	18	34	40.3	20	7	30	3	10	54	66.3
at Gardner-Webb	01-02-10	65-70	L	23-52	.442	4-9	.444	15-25	.600	16	30	46	40.8	27	11	23	1	10	65	66.2
NORTH CAROLINA A&T	01-05-10	57-51	W	21-54	.389	1-6	.167	14-23	.609	19	26	45	41.2	16	13	23	3	11	57	65.4
WINTHROP	01-09-10	67-38	W	27-53	.509	5-13	.385	8-11	.727	12	25	37	40.8	15	22	16	3	14	67	65.5
LONGWOOD	01-12-10	78-55	W	30-61	.492	1-9	.111	17-24	.708	26	28	54	41.8	19	19	28	3	12	78	66.4
PRESBYTERIAN COLLEGE	01-16-10	73-27	W	29-45	.644	5-11	.455	10-17	.588	11	21	32	41.1	10	17	21	2	19	73	66.9
UNC ASHEVILLE	01-18-10	82-40	W	29-63	.460	9-17	.529	15-24	.625	24	25	49	41.6	11	21	18	6	18	82	67.8
at Charleston Southern	01-23-10	65-52	W	25-49	.510	1-6	.167	14-25	.560	15	29	44	41.8	17	10	17	1	8	65	67.6
at Coastal Carolina	01-25-10	57-38	W	20-52	.385	3-8	.375	14-23	.609	22	23	45	41.9	15	9	13	3	10	57	67.1
at High Point	01-30-10	75-62	W	24-50	.480	1-6	.167	26-35	.743	12	30	42	41.9	19	9	14	3	8	75	67.5
at Radford	02-01-10	63-45	W	21-41	.512	0-3	.000	21-29	.724	13	23	36	41.7	15	12	24	4	15	63	67.2
N.C. CENTRAL	02-04-10	64-44	W	26-52	.500	4-9	.444	8-13	.615	21	17	38	41.5	15	18	21	3	6	64	67.1
GARDNER-WEBB	02-08-10	56-59	L	21-53	.396	3-11	.273	11-18	.611	14	19	33	41.1	19	11	15	2	8	56	66.6
at Winthrop	02-15-10	52-18	W	20-51	.392	3-12	.250	9-14	.643	18	24	42	41.1	15	8	20	5	12	52	66.0
COASTAL CAROLINA	02-20-10	57-55	W	23-48	.479	0-5	.000	11-20	.550	13	15	28	40.6	16	10	14	1	12	57	65.6
CHARLESTON SOUTHER	02-22-10	66-56	W	24-44	.545	1-8	.125	17-29	.586	17	21	38	40.5	19	10	22	1	11	66	65.6
at UNC Asheville	02-27-10	94-66	W	33-71	.465	6-11	.545	22-40	.550	27	16	43	40.6	18	22	14	0	16	94	66.7
Liberty		1734		655-1374	.477	71-226	.314	353-558	.633	426	629	1055	40.6	447	346	518	66	298	1734	66.7
Opponents		1272		425-1229	.346	125-450	.278	297-450	.660	256	420	676	26.0	492	288	553	51	200	1272	48.9

Games played: 26  
Points/game: 66.7  
FG Pct: 47.7  
3FG Pct: 31.4  
FT Pct: 63.3

Rebounds/game: 40.6  
Assists/game: 13.3  
Turnovers/game: 19.9  
Assist/turnover ratio: 0.7  
Steals/game: 11.5  
Blocks/game: 2.5



**2009-10 Liberty Women's Basketball**  
**Liberty Team Game-by-Game Comparison (as of Mar 01, 2010)**  
**All games**



Opponent	1st	2nd	Score	Mar	Total FG	FG Pct	3-Pointers	3FG Pct	Free Throws	FT Pct	Rebounds	Assist	T/Over	Block	Steal	Fouls	
WINSTON-SALEM STATE	30/12	41/14	71-26	+45	27-57/11-42	.474/.262	4-14/1-12	.286/.083	13-17/3-5	.765/.600	39/25	+14	185	19/32	4/0	15/4	15/13
UNC GREENSBORO	32/21	28/21	60-42	+18	24-49/15-52	.490/.288	2-9/4-24	.222/.167	10-22/8-19	.455/.421	40/35	+5	10/10	19/21	4/1	14/11	17/21
Tulane	32/19	31/33	63-52	+11	24-47/20-48	.511/.417	4-6/7-21	.667/.333	11-19/5-10	.579/.500	38/22	+16	10/16	24/22	3/2	11/8	16/19
Navy	24/32	31/11	55-43	+12	19-48/15-44	.396/.341	3-8/4-20	.375/.200	14-21/9-15	.667/.600	40/26	+14	11/11	18/17	0/0	7/8	14/19
Lafayette	42/28	48/27	90-55	+35	37-60/16-39	.617/.410	3-6/3-5	.500/.600	13-20/20-26	.650/.769	33/20	+13	15/8	14/24	1/2	14/2	23/20
JAMES MADISON	16/28	34/32	50-60	(10)	18-59/18-54	.305/.333	1-9/5-18	.111/.278	13-17/19-32	.765/.594	46/41	+5	6/3	20/15	3/3	6/4	23/15
GLENVILLE STATE	39/23	47/22	86-45	+41	35-57/15-78	.614/.192	0-1/7-49	.000/.143	16-28/8-11	.571/.727	67/29	+38	25/12	33/20	2/1	11/15	17/24
Auburn	19/33	45/37	64-70	(6)	25-51/24-50	.490/.480	2-7/6-17	.286/.353	12-13/16-23	.923/.696	23/34	(11)	6/4	16/19	1/3	8/6	18/13
Cornell	31/14	39/26	70-40	+30	28-53/13-48	.528/.271	3-11/4-16	.273/.250	11-21/10-18	.524/.556	43/25	+18	16/9	22/22	4/0	12/6	18/17
Virginia	29/33	25/30	54-63	(9)	22-54/21-49	.407/.429	2-11/2-7	.182/.286	8-10/19-26	.800/.731	34/26	+8	7/3	30/20	3/2	10/19	20/15
Gardner-Webb	29/29	36/41	65-70	(5)	23-52/19-51	.442/.373	4-9/6-16	.444/.375	15-25/26-36	.600/.722	46/27	+19	11/17	23/13	1/3	10/9	27/24
NORTH CAROLINA A&T	33/27	24/24	57-51	+6	21-54/19-48	.389/.396	1-6/5-17	.167/.294	14-23/8-16	.609/.500	45/28	+17	13/13	23/19	3/3	11/9	16/18
WINTHROP	24/16	43/22	67-38	+29	27-53/13-41	.509/.317	5-13/3-9	.385/.333	8-11/9-13	.727/.692	37/21	+16	22/10	16/20	3/0	14/4	15/15
LONGWOOD	38/25	40/30	78-55	+23	30-61/18-52	.492/.346	1-9/7-22	.111/.318	17-24/12-18	.708/.667	54/19	+35	19/13	28/24	3/3	12/12	19/24
PRESBYTERIAN COLLEGE	36/10	37/17	73-27	+46	29-45/10-36	.644/.278	5-11/1-18	.455/.056	10-17/16-10	.588/.600	32/18	+14	17/7	21/30	2/1	19/10	10/16
UNC ASHEVILLE	41/17	41/23	82-40	+42	29-63/14-51	.460/.275	9-17/5-12	.529/.417	15-24/7-12	.625/.583	49/27	+22	21/9	18/25	6/1	18/9	11/19
Charleston Southern	37/24	28/28	65-52	+13	25-49/13-47	.510/.277	1-6/8-30	.167/.267	14-25/18-22	.560/.818	44/26	+18	10/10	17/15	1/2	8/6	17/23
Coastal Carolina	16/21	41/17	57-38	+19	20-52/13-41	.385/.317	3-8/6-14	.375/.429	14-23/6-6	.609/.000	45/21	+24	9/7	13/20	3/5	10/7	15/19
High Point	34/41	41/21	75-62	+13	24-50/20-49	.480/.408	1-6/5-14	.167/.357	26-35/17-27	.743/.630	42/25	+17	9/15	14/16	3/4	8/2	19/25
Radford	30/15	33/30	63-45	+18	21-41/15-51	.512/.294	0-3/3-12	.000/.250	21-29/12-17	.724/.706	36/26	+10	12/8	24/23	4/3	15/7	15/21
N.C. CENTRAL	30/20	34/24	64-44	+20	26-52/17-45	.500/.378	4-9/2-11	.444/.182	8-13/8-12	.615/.667	38/21	+17	18/12	21/21	3/3	6/11	15/13
GARDNER-WEEB	27/25	29/34	56-59	(3)	21-53/23-44	.396/.523	3-11/6-13	.273/.462	11-18/7-12	.611/.583	33/27	+6	11/13	15/17	2/1	8/4	19/19
Winthrop	23/10	29/8	52-18	+34	20-51/5-42	.392/.119	3-12/0-14	.250/.000	9-14/8-11	.643/.727	42/32	+10	8/2	20/28	5/3	12/9	15/17
COASTAL CAROLINA	33/29	24/26	57-55	+2	23-48/19-42	.479/.452	0-5/9-18	.000/.500	11-20/8-13	.550/.615	28/26	+2	10/13	14/20	1/0	12/6	16/14
CHARLESTON SOUTHERN	34/29	32/27	66-56	+10	24-44/18-41	.545/.439	1-8/10-25	.125/.400	17-29/10-16	.586/.625	38/16	+22	10/13	22/22	1/0	11/3	19/22
UNC Asheville	54/33	40/33	94-66	+28	33-71/21-44	.465/.477	6-11/6-16	.545/.375	22-40/18-24	.550/.750	43/33	+10	22/15	14/28	0/5	16/9	18/27

Note: Game totals are displayed in the format TEAM/OPPONENT for each category



**2009-10 Liberty Women's Basketball**  
**Liberty Combined Team Statistics (as of Mar 01, 2010)**  
**Conference games**



<b>RECORD:</b>	<b>OVERALL</b>	<b>HOME</b>	<b>AWAY</b>	<b>NEUTRAL</b>
ALL GAMES	11-2	5-1	6-1	0-0
CONFERENCE	11-2	5-1	6-1	0-0
NON-CONFERENCE	0-0	0-0	0-0	0-0

#	Player	gp-gs	min	avg	Total		3-Point		F-Throw		Rebounds			pf	dq	a	to	blk	stl	pts	avg	
					fg-fga	fg%	3fg-fga	3fg%	ft-fa	ft%	off	def	tot									avg
40	BROWN, Devon	13-13	375	28.8	78-170	.459	15-50	.300	35-49	.714	32	77	109	8.4	26	0	22	34	6	31	206	15.8
23	WARLEY, Avery	13-13	350	26.9	60-100	.600	0-1	.000	38-70	.543	51	65	116	8.9	41	2	6	31	15	19	158	12.2
11	ANTIC, Jelena	7-4	157	22.4	26-39	.667	4-6	.667	3-7	.429	18	14	32	4.6	16	1	9	16	0	8	59	8.4
21	MAYS, Amber	13-13	334	25.7	40-80	.500	2-4	.500	23-46	.500	8	15	23	1.8	31	1	49	37	1	22	105	8.1
15	BEECHER, Kylee	13-9	333	25.6	29-72	.403	1-8	.125	39-50	.780	31	34	65	5.0	23	0	12	20	3	13	98	7.5
32	McLEOD, Rachel	13-13	338	26.0	21-56	.375	4-9	.444	19-22	.864	15	22	37	2.8	10	0	27	15	0	17	65	5.0
12	DALE, Danika	13-0	230	17.7	22-46	.478	5-12	.417	15-24	.625	11	22	33	2.5	17	0	13	22	4	9	64	4.9
25	MORGAN, Dymond	13-0	225	17.3	21-59	.356	4-15	.267	15-25	.600	1	10	11	0.8	26	0	25	25	0	25	61	4.7
01	WASHINGTON, LaKen	13-0	167	12.8	19-37	.514	6-15	.400	2-8	.250	5	6	11	0.8	17	0	8	14	0	17	46	3.5
54	COY, Carra	11-0	91	8.3	3-13	.231	0-0	.000	4-9	.444	14	6	20	1.8	9	0	1	5	3	0	10	0.9
Team											28	30	58				12					
Total.....		13	2600		319-672	.475	41-120	.342	193-310	.623	214	301	515	39.6	216	4	172	231	32	161	872	67.1
Opponents.....		13	2600		203-580	.350	68-211	.322	152-219	.694	115	210	325	25.0	261	-	139	277	28	85	626	48.2

<b>TEAM STATISTICS</b>	<b>LIBERTY</b>	<b>OPP</b>	<b>Date</b>	<b>Opponent</b>	<b>Score</b>	<b>Att.</b>
SCORING	872	626	* 01-02-10	at Gardner-Webb	L 65-70	249
Points per game	67.1	48.2	* 01-09-10	WINTHROP	w 67-38	557
Scoring margin	+18.9	-	* 01-16-10	PRESBYTERIAN COLLEGE	w 73-27	688
FIELD GOALS-ATT	319-672	203-580	* 01-18-10	UNC ASHEVILLE	w 82-40	826
Field goal pct	.475	.350	* 01-23-10	at Charleston Southern	w 65-52	881
3 POINT FG-ATT	41-120	68-211	* 01-25-10	at Coastal Carolina	w 57-38	687
3-point FG pct	.342	.322	* 01-30-10	at High Point	w 75-62	439
3-pt FG made per game	3.2	5.2	* 02-01-10	at Radford	w 63-45	384
FREE THROWS-ATT	193-310	152-219	* 02-08-10	GARDNER-WEBB	L 56-59	833
Free throw pct	.623	.694	* 02-15-10	at Winthrop	w 52-18	560
F-Throws made per game	14.8	11.7	* 02-20-10	COASTAL CAROLINA	w 57-55	3387
REBOUNDS	515	325	* 02-22-10	CHARLESTON SOUTHERN	w 66-56	781
Rebounds per game	39.6	25.0	* 02-27-10	at UNC Asheville	w 94-66	986
Rebounding margin	+14.6	-				
ASSISTS	172	139				
Assists per game	13.2	10.7				
TURNOVERS	231	277				
Turnovers per game	17.8	21.3				
Turnover margin	+3.5	-				
Assist/turnover ratio	0.7	0.5				
STEALS	161	85				
Steals per game	12.4	6.5				
BLOCKS	32	28				
Blocks per game	2.5	2.2				
ATTENDANCE	7072	4186				
Home games-Avg/Game	6-1179	7-598				
Neutral site-Avg/Game	-	0-0				

% = Navy Classic (Annapolis, Md.)  
 # = Marriott Cavalier Classic (Charlottesville, Va.)  
 \* = Big South Conference game

<b>Score by Periods</b>	<b>1st</b>	<b>2nd</b>	<b>Totals</b>
Liberty	418	454	872
Opponents	299	327	626





**2009-10 Liberty Women's Basketball  
Liberty Extended Season Box Score (as of Mar 01, 2010)  
All games**



RECORD:	OVERALL	HOME	AWAY	NEUTRAL
ALL GAMES	21-5	11-2	8-3	2-0
CONFERENCE	11-2	5-1	6-1	0-0
NON-CONFERENCE	10-3	6-1	2-2	2-0

#	Player	gp-gs	min	avg	Total			3-Point			F-Throw			Rebounds			avg										
					fg	fga	fg%	3fg	3fga	3fg%	ft	fta	ft%	off	def	tot		avg	pf	dq	a	alg	to	tolg	alto	bk	bkg
40	BROWN, Devon	26-26	738	28.4	161-340	.474	33-98	.337	75-105	.714	68	157	225	8.7	50	0	41	1.58	68	2.62	0.60	15	0.58	52	2.00	430	16.5
23	WARLEY, Avery	26-26	707	27.2	117-198	.591	0-1	.000	51-99	.515	102	119	221	8.5	78	4	12	0.46	68	2.62	0.18	18	0.69	28	1.08	285	11.0
21	MAY'S, Amber	26-26	695	26.7	87-162	.537	4-7	.571	41-76	.539	11	32	43	1.7	68	2	105	4.04	84	3.23	1.25	1	0.04	60	2.31	219	8.4
11	ANTIC, Jelena	16-8	371	23.2	53-98	.541	6-12	.500	17-29	.586	41	42	83	5.2	29	1	26	1.63	40	2.50	0.65	2	0.13	16	1.00	129	8.1
15	BEECHER, Kilee	26-18	665	25.6	60-137	.438	1-12	.083	60-80	.750	52	56	108	4.2	43	0	25	0.96	46	1.77	0.54	7	0.27	20	0.77	181	7.0
32	MCLEOD, Rachel	26-26	628	24.2	46-124	.371	5-17	.294	36-46	.783	22	36	58	2.2	28	0	47	1.81	37	1.42	1.27	1	0.04	26	1.00	133	5.1
01	WASHINGTON, Lakendr	26-0	367	14.1	49-107	.458	10-36	.278	11-23	.478	15	26	41	1.6	40	1	19	0.73	42	1.62	0.45	3	0.12	36	1.38	119	4.6
12	DALE, Danika	26-0	417	16.0	38-89	.427	7-23	.304	29-46	.630	25	60	85	3.3	32	0	29	1.12	44	1.69	0.66	11	0.42	20	0.77	112	4.3
25	MORGAN, Dymond	26-0	419	16.1	36-95	.379	5-20	.250	25-38	.658	7	33	40	1.5	51	0	41	1.58	57	2.19	0.72	0	0.00	38	1.46	102	3.9
54	COY, Carra	20-0	193	9.7	8-24	.333	0-0	.000	8-16	.500	18	16	34	1.7	28	0	1	0.05	13	0.65	0.08	8	0.40	2	0.10	24	1.2
Total.....		26	5200		655-1374	.477	71-226	.314	353-558	.633	426	629	1055	40.6	447	8	346	13.31	518	19.92	0.67	66	2.54	298	11.46	1734	66.7
Opponents.....		26	5200		425-1229	.346	125-450	.278	297-450	.660	256	420	676	26.0	492	-	288	11.08	553	21.27	0.52	51	1.96	200	7.69	1272	48.9

Score by Periods	1st	2nd	Totals
Liberty	813	921	1734
Opponents	614	658	1272



**2009-10 Liberty Women's Basketball**  
**Liberty Combined Team Statistics (as of Mar 01, 2010)**  
**All games**



<b>RECORD:</b>	<b>OVERALL</b>	<b>HOME</b>	<b>AWAY</b>	<b>NEUTRAL</b>
ALL GAMES	21-5	11-2	8-3	2-0
CONFERENCE	11-2	5-1	6-1	0-0
NON-CONFERENCE	10-3	6-1	2-2	2-0

#	Player	gp-gs	min	avg	Total		3-Point		F-Throw		Rebounds			pf	dq	a	to	blk	stl	pts	avg	
					fg-fga	fg%	3fg-fga	3fg%	ft-fta	ft%	off	def	tot									avg
40	BROWN, Devon	26-26	738	28.4	161-340	.474	33-98	.337	75-105	.714	68	157	225	8.7	50	0	41	68	15	52	430	16.5
23	WARLEY, Avery	26-26	707	27.2	117-198	.591	0-1	.000	51-99	.515	102	119	221	8.5	78	4	12	68	18	28	285	11.0
21	MAYS, Amber	26-26	695	26.7	87-162	.537	4-7	.571	41-76	.539	11	32	43	1.7	68	2	105	84	1	60	219	8.4
11	ANTIC, Jelena	16-8	371	23.2	53-98	.541	6-12	.500	17-29	.586	41	42	83	5.2	29	1	26	40	2	16	129	8.1
15	BEECHER, Kylee	26-18	665	25.6	60-137	.438	1-12	.083	60-80	.750	52	56	108	4.2	43	0	25	46	7	20	181	7.0
32	McLEOD, Rachel	26-26	628	24.2	46-124	.371	5-17	.294	36-46	.783	22	36	58	2.2	28	0	47	37	1	26	133	5.1
01	WASHINGTON, LaKen	26-0	367	14.1	49-107	.458	10-36	.278	11-23	.478	15	26	41	1.6	40	1	19	42	3	36	119	4.6
12	DALE, Danika	26-0	417	16.0	38-89	.427	7-23	.304	29-46	.630	25	60	85	3.3	32	0	29	44	11	20	112	4.3
25	MORGAN, Dymond	26-0	419	16.1	36-95	.379	5-20	.250	25-38	.658	7	33	40	1.5	51	0	41	57	0	38	102	3.9
54	COY, Carra	20-0	193	9.7	8-24	.333	0-0	.000	8-16	.500	18	16	34	1.7	28	0	1	13	8	2	24	1.2
Team											65	52	117				19					
Total.....		26	5200		655-1374	.477	71-226	.314	353-558	.633	426	629	1055	40.6	447	8	346	518	66	298	1734	66.7
Opponents.....		26	5200		425-1229	.346	125-450	.278	297-450	.660	256	420	676	26.0	492	-	288	553	51	200	1272	48.9

<b>TEAM STATISTICS</b>	<b>LIBERTY</b>	<b>OPP</b>	<b>Date</b>	<b>Opponent</b>	<b>Score</b>	<b>Att.</b>
SCORING	1734	1272	11-13-09	WINSTON-SALEM STATE	w 71-26	1192
Points per game	66.7	48.9	11-17-09	UNC GREENSBORO	w 60-42	786
Scoring margin	+17.8	-	% 11-20-09	vs Tulane	w 63-52	207
FIELD GOALS-ATT	655-1374	425-1229	% 11-21-09	at Navy	w 55-43	852
Field goal pct	.477	.346	11-28-09	at Lafayette	w 90-55	324
3 POINT FG-ATT	71-226	125-450	12-01-09	JAMES MADISON	L 50-60	1209
3-point FG pct	.314	.278	12-05-09	GLENVILLE STATE	w 86-45	611
3-pt FG made per game	2.7	4.8	12-15-09	at Auburn	L 64-70	1566
FREE THROWS-ATT	353-558	297-450	# 12-28-09	vs Cornell	w 70-40	452
Free throw pct	.633	.660	# 12-29-09	at Virginia	L 54-63	3096
F-Throws made per game	13.6	11.4	* 01-02-10	at Gardner-Webb	L 65-70	249
REBOUNDS	1055	676	01-05-10	NORTH CAROLINA A&T	w 57-51	365
Rebounds per game	40.6	26.0	* 01-09-10	WINTHROP	w 67-38	557
Rebounding margin	+14.6	-	01-12-10	LONGWOOD	w 78-55	460
ASSISTS	346	288	* 01-16-10	PRESBYTERIAN COLLEGE	w 73-27	688
Assists per game	13.3	11.1	* 01-18-10	UNC ASHEVILLE	w 82-40	826
TURNOVERS	518	553	* 01-23-10	at Charleston Southern	w 65-52	881
Turnovers per game	19.9	21.3	* 01-25-10	at Coastal Carolina	w 57-38	687
Turnover margin	+1.3	-	* 01-30-10	at High Point	w 75-62	439
Assist/turnover ratio	0.7	0.5	* 02-01-10	at Radford	w 63-45	384
STEALS	298	200	02-04-10	N.C. CENTRAL	w 64-44	781
Steals per game	11.5	7.7	* 02-08-10	GARDNER-WEBB	L 56-59	833
BLOCKS	66	51	* 02-15-10	at Winthrop	w 52-18	560
Blocks per game	2.5	2.0	* 02-20-10	COASTAL CAROLINA	w 57-55	3387
ATTENDANCE	12476	10683	* 02-22-10	CHARLESTON SOUTHERN	w 66-56	781
Home games-Avg/Game	13-960	11-911	* 02-27-10	at UNC Asheville	w 94-66	986
Neutral site-Avg/Game	-	2-330				

<b>Score by Periods</b>	<b>1st</b>	<b>2nd</b>	<b>Totals</b>
Liberty	813	921	1734
Opponents	614	658	1272

% = Navy Classic (Annapolis, Md.)  
# = Marriott Cavalier Classic (Charlottesville, Va.)  
\* = Big South Conference game