

**2009-10 Liberty
Women's Basketball
Quick Facts**

General Information

Name of School..... Liberty University
City/Zip Lynchburg, Va. 24502
Founded 1971
Enrollment 11,311
Nickname..... Lady Flames
School Colors Red, White & Blue
Home Arena..... Vines Center
Capacity..... 8,085
Affiliation..... NCAA Division I
Conference..... Big South
Founder..... Dr. Jerry Falwell
Chancellor Jerry Falwell, Jr.
Director of Athletics..... Jeff Barber
Athletics Dept. Phone..... (434) 582-2100

Women's Basketball Information

Head Coach..... Carey Green
Alma Mater Coastal Carolina, '79
Record at School 256-82 (11th Year)
Career Record..... Same
Assistant Coaches
..... Alexis Sherard (St. Michael's, '93)
..... Heather Stephens (Wyoming, '03)
..... Andy Bloodworth (Calvin, '98)
Certified Athletic Trainer
..... Madeline Bosek

History

First Season of Basketball..... 1975-76
All-Time Record..... 527-410
NCAA Tournament Appearances..... 12
Last NCAA Appearance..... 2009
Opponent..... Louisville
Result..... L/42-62 (First Round)
Final/Highest Ranking N/A
Final 2008-09 Record..... 24-9
Conference Record/Finish..... 15-1/First
Starters Returning/Lost..... 2/3
Letterwinners Returning/Lost..... 7/7
Newcomers..... 6

Athletics Communications Info.

Asst. AD - Communications
..... Todd Wetmore
SID Office Phone..... (434) 582-2292
Cell Phone..... (434) 841-8974
Email Address..... twetmore@liberty.edu
Assoc. Director Ryan Bomberger
Cell Phone (434) 221-5576
Email Address... rbomberger@liberty.edu
Asst. Director Paul Carmany
Cell Phone (434) 221-5575
Email Address..... pjcarmany@liberty.edu
Asst. Director Eric Brown
Cell Phone (434) 221-8817
Email Address..... eqbrown@liberty.edu
Grad. Assistant Jennifer Shelton
Cell Phone (828) 638-3876
Email Address..... jbshelton2@liberty.edu
WBB Contact..... Paul Carmany
Ath. Comm. Fax..... (434) 582-2076
Website..... LibertyFlames.com

Media Information

Radio

Station WWMC "The Light" (90.9 FM)
Play-By-Play Nick Pierce
Color Josh Wood

Television

Station Flames Sports Network
Play-By-Play Ray Jones
Color Jamie Hall

Game No. 25 - Feb. 22, 2010



**Charleston Southern BUCCANEERS
(15-10, 7-5 Big South)**

at



**Liberty LADY FLAMES
(19-5, 9-2 Big South)**

Lynchburg, Va. - Vines Center - 7 p.m.

The Game

Liberty (19-5, 9-2 Big South) will play host to Charleston Southern (15-10, 7-5 Big South) in a battle between two of the Big South Conference's hottest teams, Monday at 7 p.m. at the Vines Center. The Lady Flames have won 12 of their last 13 games, while the Buccaneers are 6-1 in their last seven outings.

Last Time Out

Liberty won its 33th consecutive meeting with Coastal Carolina, Saturday at the Vines Center, but had to withstand a late comeback attempt by the Chanticleers. Coastal Carolina trimmed the Lady Flames' 11-point lead to two, but Liberty came up with a defensive stop on the game's final possession to preserve a 57-55 victory.

On Deck

The Lady Flames will begin their final road trip of the regular season Saturday at 2 p.m., when they visit UNC Asheville. Liberty has defeated the Bulldogs 12 straight times at the Justice Center.

Lady Flames On The Air

All Lady Flames basketball games may be heard LIVE on WWMC 90.9 FM "The Light." Jamie Hall, in the midst of his 16th year of broadcasting Lady Flames basketball, is once again handling the courtside play-by-play duties for road games. Nick Pierce and Josh Wood serve as the primary commentators for home contests.

Lady Flames On TV

All 15 of Liberty's home women's basketball games will be televised in 2009-10, including 14 on the Flames Sports Network (FSN) and one on SportSouth/MASN. The FSN broadcasting team consists of Ray Jones on play-by-play and Jamie Hall on color.

Liberty's Probable Starters

No.	Name	Pos.	Ht.	Yr.	PPG	RPG	Other Stats
21	Amber Mays	G	5-6	Sr.	8.6	1.7	4.3 apg
32	Rachel McLeod	G	5-10	Jr.	5.3	2.3	1.8 apg
40	Devon Brown	G	5-10	R-Fr.	16.6	8.7	2.0 spg
15	Kylee Beecher	F	6-4	So.	6.9	4.0	44.9 FG%
23	Avery Warley	F	6-3	R-So.	10.0	8.4	57.1 FG%

Reserves

1	LaKendra Washington	G	5-8	Fr.	4.5	1.7	1.4 spg
11	Jelena Antic	F	6-2	Fr.	8.0	5.1	1.5 apg
12	Danika Dale	G	6-1	So.	4.2	3.4	1.1 apg
25	Dymond Morgan	G	5-7	Jr.	4.0	1.6	1.4 spg
30	Brittany Campbell	G	6-0	R-Fr.	--	--	--
43	Kittery Maine	F	6-4	Jr.	--	--	--
54	Carra Coy	F	6-6	Fr.	1.2	1.7	0.4 bpg

2009-10 Liberty Women's Basketball Schedule/Results

Overall: 19-5
Big South: 9-2

11/13 WINSTON-SALEM ST.* W, 71-26
11/17 UNC GREENSBORO^ W, 60-42

Navy Classic (Annapolis, Md.)

11/20 vs. Tulane W, 63-52
11/21 at Navy W, 55-43

11/28 at Lafayette W, 90-55

12/1 JAMES MADISON^ L, 50-60
12/5 GLENVILLE STATE^ W, 86-45
12/15 at Auburn L, 64-70

Marriott Cavalier Classic (Charlottesville, Va.)

12/28 vs. Cornell W, 70-40
12/29 at No. 21/23 Virginia L, 54-63

1/2 at Gardner-Webb* L, 65-70
1/5 N.C. A&T^ W, 57-51
1/9 WINTHROP*^ W, 67-38
1/12 LONGWOOD^ W, 78-55
1/16 PRESBYTERIAN*^ W, 73-27
1/18 UNC ASHEVILLE*^ W, 82-40
1/23 at Charleston So.* W, 65-52
1/25 at Coastal Carolina* W, 57-38
1/30 at High Point* W, 75-62

2/1 at Radford* W, 63-45
2/4 N.C. CENTRAL^ W, 64-44
2/8 GARDNER-WEBB* & L, 56-59
2/15 at Winthrop* W, 52-18
2/20 COASTAL CAR.*^ W, 57-55
2/22 CHARLESTON SO.*^ 7 p.m.
2/27 at UNC Asheville* 2 p.m.

3/1 at Presbyterian* 7 p.m.
3/5 RADFORD*^ 7 p.m.
3/8 HIGH POINT*^ 7 p.m.

Big South WBB Championship (High Point, N.C.)

3/12 Quarterfinals TBA
3/13 Semifinals# 1/3 p.m.
3/14 Championship Game# 2 p.m.

NCAA Tournament

3/20-21 First Round TBA
3/22-23 Second Round TBA

Home Games in BOLD CAPS

* - Big South Conference Game
All times are Eastern Standard Time
^ - Broadcast on
Flames Sports Network
& - Broadcast on SportSouth/MASN

Team Statistical Leaders

Total Points

Devon Brown - 398/16.6 ppg
Avery Warley - 241/10.0 ppg

Total Rebounds

Devon Brown - 208/8.7 rpg
Avery Warley - 201/8.4 rpg

Total Assists

Amber Mays - 103/4.3 apg
Rachel McLeod - 42/1.8 apg

Total Steals

Amber Mays - 56/2.3 spg
Devon Brown - 47/2.0 spg

Head Coach Carey Green

Record at Liberty: 256-82 (11th Year)

Career Record: Same

9 Big South Championships: 2000, 2001, 2002, 2003, 2004, 2005, 2006, 2008, 2009
8 NCAA Appearances: 2000, 2001, 2002, 2003, 2004, 2005 (Sweet 16), 2006, 2008, 2009
5-time Big South Coach of the Year: 2000, 2003, 2006, 2008, 2009
3-time VaSID State Coach of the Year: 2003, 2005, 2006

Liberty head women's basketball coach Carey Green, in his 11th season with the Lady Flames, has instilled quite a winning tradition during his tenure at the institution. His teams have averaged more than 23 victories per year, putting his name alongside the nation's premier women's basketball coaches.

Green has accumulated a 256-82 record on the Liberty bench, good for a winning percentage of .757. He currently ranks ninth all-time among NCAA Division I women's basketball coaches in winning percentage, ahead of renowned coaching names like Rutgers' Vivian Stringer, LSU's Van Chancellor and North Carolina's Sylvia Hatchell.

More importantly, Liberty has won the Big South Tournament title and advanced to the NCAA Tournament nine times with Green as head coach. Liberty has totaled 23 or more victories during eight of those years, including the 2004-05 season, which saw the Lady Flames reach the Sweet 16 for the first time in program history.

Green has actually been to the postseason on 21 occasions as a women's basketball coach, a span which includes a dozen years as an assistant coach at Clemson. In all but one of the 21 appearances, he has experienced the NCAA Tournament.

Last season, Green earned his unprecedented fifth Big South Coach of the Year award, after guiding a team decimated by ACL injuries to a 24-9 record and its 12th NCAA Tournament appearance in the last 13 years. The Lady Flames also won the Hokie Hardwood Classic, claiming their first-ever victory over Virginia Tech in the tournament championship game.

At season's end, Green saw his second player selected in the WNBA Draft, as Megan Frazee was taken in the second round by the San Antonio Silver Stars. She then played part of her rookie season alongside 2005 Liberty alum Katie (Feenstra) Mattera in San Antonio.

Rebounding and defense have always been staples of Green-coached teams, and the 2008-09 Lady Flames were no exception. Liberty outrebounded opponents by an average of 12.7 caroms per game, ranking second nationally. The Lady Flames have now been listed among the nation's top five teams in rebounding margin for six straight years. Liberty led the nation in the category in 2003-04 and 2004-05. The Lady Flames also ended the season ranked in the top 10 nationally for scoring defense (second, 52.6 ppg) and field goal percentage defense (sixth, .345).

A key late-season conference victory over High Point in 2006 made Green the winningest coach in Big South Conference history. He is also Liberty's career wins leader.

The 2004-05 year was a special one on Liberty Mountain, for many reasons. A senior-laden Lady Flames team recorded upset wins over No. 4 seed Penn State (78-70) and No. 5 seed DePaul (88-79) in the first two rounds of the NCAA Tournament, becoming just the second team ever to advance to the Sweet 16 as a No. 13 seed. The Lady Flames ended the season with their highest national ranking to date, No. 21 (USA Today/ESPN).

Green's track record shows he has the ability to meet those challenges. The Lady Flames have recorded two wins over UNLV, Virginia and West Virginia and solo victories over No. 19 DePaul, No. 17 Kansas State, No. 25 Penn State, Virginia Tech and Wake Forest during Green's tenure. The upset victory over No. 25 Virginia in 2003 marked Liberty's first win over a Top 25 team.

His record against conference foes is equally impressive. He led the Lady Flames on a Big South record 47-game winning streak and currently owns a .911 (163-16) winning percentage against conference teams. Green has marched through conference play with one or fewer setbacks seven times, while guiding the Lady Flames to two undefeated conference seasons.

Big South Conference Update

(Records Updated Through 2/20)

Overall Standings

	W	L	Pct.
Gardner-Webb	23	3	.885
Liberty	19	5	.792
Charleston So.	15	10	.600
Coastal Carolina	14	10	.583
High Point	15	11	.577
Winthrop	10	15	.400
UNC Asheville	7	19	.269
Radford	5	18	.217
Presbyterian	5	20	.200

Conference Standings

	W	L	Pct.
Gardner-Webb	12	1	.923
Liberty	9	2	.818
High Point	8	5	.615
Charleston So.	7	5	.583
Coastal Carolina	5	7	.417
Winthrop	4	7	.364
Radford	4	8	.333
Presbyterian	3	8	.273
UNC Asheville	2	11	.154

Upcoming Schedule

Monday, Feb. 22

Winthrop at Gardner-Webb	7 p.m.
Charleston So. at Liberty	7 p.m.
Presbyterian at High Point	7 p.m.
Coastal Carolina at Radford	7 p.m.

Saturday, Feb. 27

Liberty at UNC Asheville	2 p.m.
Charleston So. at Gardner-Webb	3 p.m.
High Point at Winthrop	4 p.m.
Radford at Presbyterian	5 p.m.

Monday, March 1

Coastal Carolina at Winthrop	7 p.m.
Radford at UNC Asheville	7 p.m.
Liberty at Presbyterian	7 p.m.

Friday, March 5

Gardner-Webb at Coastal Car.	7 p.m.
Winthrop at UNC Asheville	7 p.m.
Presbyterian at Charleston So.	7 p.m.
Radford at Liberty	7 p.m.

Monday, March 8

Winthrop at Charleston So.	7 p.m.
High Point at Liberty	7 p.m.
Presbyterian at Coastal Car.	7 p.m.

End Regular Season

Scouting Charleston Southern

Charleston Southern is enjoying one of its best seasons in program history. The Buccaneers' 15 wins equal their second-highest victory total and their seven Big South wins are just one shy of their most conference triumphs in a single season.

CSU canned 11 three-pointers during its 84-78 win at Radford on Saturday, extending its current winning streak to four. The Buccaneers' prolific outside shooting is nothing new, as Charleston Southern ranks No. 4 nationally with 8.8 made triples per contest. In fact, CSU has made more three-pointers this season (221) than Liberty has attempted (207).

The leaders of the Buccaneers' three-point barrage are 5-9 junior guard Katie Tull and 5-10 redshirt junior guard Kelsey Wasmer. Tull ranks second in the nation with 90 three-pointers and sits second in the Big South with a team-high 16.0 ppg.

Meanwhile, Wasmer averages 12.9 ppg and has connected on 52 trifectas. Wasmer has been the Buccaneers' hottest player of late, averaging 23.4 ppg in her last five outings, including a career-high 33-point outburst at Radford on Saturday.

The Coaching Matchup

Liberty Head Coach Carey Green is in his 11th season with the Lady Flames, and has led his team to nine Big South titles. A five-time Big South Coach of the Year, Green owns a 256-82 career record and is the all-time wins leader at Liberty and among Big South women's basketball coaches. His career winning percentage (.757) ranked ninth all-time among NCAA Division I women's basketball coaches at the season's outset. Green is 24-0 against Charleston Southern.

Julie Goodenough is 45-70 in her fourth season at Charleston Southern and 255-185 in her 16th overall season as a collegiate head coach. Previous to her time with the Lady Buccaneers, Goodenough was Oklahoma State's head coach for three seasons (2003-05). She is 0-8 all-time versus Liberty.

Liberty-Charleston Southern Series Notes

Liberty is 41-5 all-time versus Charleston Southern, after winning its last 26 consecutive meetings with the Buccaneers by an average of 23.8 ppg.

The Lady Flames have recorded 15 straight wins over the Buccaneers at the Vines Center, since a 65-64 CSU victory on Jan. 20, 1996. The Buccaneers' Chrissy Kelly scored four of her seven points in the final 42 seconds, including the game-winning jumper with just five ticks remaining. Michelle Wyms led the Lady Flames with 21 points and eight boards.

Charleston Southern's most recent triumph over Liberty was a 66-60 decision, Jan. 18, 1999 at the CSU Field House. In that game, CSU overcame a 14-point first-half deficit and Sharon Wilkerson's eight triples and 26 points for the Lady Flames.

Liberty won its first matchup with the Buccaneers this season, claiming a 65-52 victory at the CSU Field House. Avery Warley led all players in both points (18) and rebounds (16), helping head coach Carey Green win career game No. 250. Helen Terry paced CSU with 14 points, but the Lady Flames were able to hold the duo of Katie Tull and Kelsey Wasmer in check. The two junior sharpshooters combined for 19 points on 6-of-20 shooting from the floor.

Liberty.....Statistical Comparison..... Charleston So.

19-5	Record	15-10
47.5	Field Goal Percentage	38.6
33.7	Opponent Field Goal Percentage	41.0
30.9	Three-Point Field Goal Percentage	31.4
2.7	Three-Pointers Made Per Game	8.8
64.2	Free Throw Percentage	70.1
40.6	Rebound Average	39.0
26.1	Opponent Rebound Average	40.3
+14.5	Rebound Differential	-1.3
65.6	Points Per Game	68.9
47.9	Points Allowed Per Game	65.2
+17.7	Point Differential	+3.6



NCAA Top 25 Polls

AP Top 25

1) Connecticut (25-0).....	1,000 pts.
2) Stanford (23-1)	959
3) Nebraska (23-0)	901
4) Notre Dame (23-1)	891
5) Tennessee (23-2)	848
6) Xavier (20-3).....	773
7) Ohio State (25-3).....	746
8) Duke (21-4)	726
9) West Virginia (22-3).....	666
10) Florida State (21-4)	633
11) Oklahoma (18-6).....	600
12) Texas (18-6)	568
13) Iowa State (19-4).....	437
14) Georgetown (20-4)	385
15) Texas A&M (17-6).....	380
16) Kentucky (21-4).....	352
17) Oklahoma State (18-6).....	324
18) Baylor (17-7).....	308
19) Georgia Tech (20-5)	263
20) Georgia (20-6).....	217
21) Gonzaga (21-4)	186
22) St. John's (20-5).....	133
23T) TCU (19-5).....	128
23T) LSU (17-7).....	128
25) Vanderbilt (18-7).....	117

2009-10 Opponents in Bold

ESPN/USA Today Coaches Top 25

1) Connecticut (26-0).....	775 pts.
2) Stanford (23-1)	741
3T) Notre Dame (23-1)	696
3T) Nebraska (23-0)	696
5) Tennessee (23-2)	656
6) Xavier (20-3).....	617
7) Duke (21-4)	571
8) West Virginia (22-3).....	559
9) Ohio State (25-3).....	539
10) Florida State (22-4)	503
11) Oklahoma (18-7).....	433
12T) Georgetown (20-4).....	389
12T) Iowa State (19-4).....	389
14) Texas (18-6)	341
15) Texas A&M (17-6).....	336
16) Kentucky (21-4)	275
17) Oklahoma State (18-6).....	239
18) Virginia (19-6).....	211
19) Baylor (17-7).....	200
20T) Georgia (20-6).....	185
20T) Vanderbilt (18-7).....	185
22) Gonzaga (21-4)	142
23) St. John's (20-5).....	120
24) Hartford (21-3).....	82
25) TCU (19-5)	47

2009-10 Opponents in Bold

Liberty Versus the Big South Conference

Liberty has enjoyed a considerable amount of success versus Big South Conference opposition, since joining the league for the 1991-92 season. The Lady Flames have won the conference tournament 12 times and captured 11 regular-season championships.

Liberty is 236-69 (.774) all-time against Big South opponents, including 200-63 in regular-season matchups and 36-6 in Big South Championship tilts. During Carey Green's tenure as head coach, the Lady Flames are 163-16 (.911) when facing Big South foes.

Fabulous in February

Liberty has won 95 of its last 101 games played during the month of February, dating back to the 1997 Big South Championship. The only teams to defeat the Lady Flames in February since then are High Point (three times), Gardner-Webb, UNC Asheville and Winthrop.

The Lady Flames own a 176-122 all-time mark during the year's second month, including a 76-6 record under Carey Green. Liberty, which went 6-0 in February a season ago and is 4-1 this February, has seven games scheduled this month.

Battle of Strengths

Monday's game will match up Charleston Southern, one of the nation's most prolific three-point shooting teams, with Liberty, one of the nation's best at defending the triple. Through games played on Feb. 18, the Buccaneers ranked No. 4 in the NCAA with 8.8 made three-pointers per contest. Meanwhile, the Lady Flames checked in at No. 9 for three-point field goal percentage defense (.265).

In the teams' first meeting of the season on Jan. 23, CSU connected on just eight of its 30 long-distance attempts (.267).

Trying for 20

At 19-5, the Lady Flames need just one more victory to reach the 20-win mark for the 12th time. Prior to the 1996-97 season, Liberty's school record for victories was 16. Since then, the Lady Flames have recorded 20 wins or more 11 times in the last 13 seasons.

Coming Through in a Close One

Liberty's 57-55 victory over Coastal Carolina was only the Lady Flames' second win this season in a game decided by 10 or fewer points. Liberty had lost five of its first six close contests this year.

The win also marked the Lady Flames' first triumph in a game decided by five or fewer points since a 51-50 win over Gardner-Webb in the title game of the 2009 Big South Championship, March 15, 2009 at High Point's Millis Center.

Bench Bunch

The Lady Flames' reserves have outscored their opponents' bench performers in each of the team's last three victories, averaging 19.3 ppg in those contests.

Bolstered by the return of Jelena Antic from injury, Liberty's bench outscored Coastal Carolina's non-starters by a 17-5 margin Saturday, playing a key role in the Lady Flames' 57-55 win.

Danika Dale has provided a spark off the bench recently, averaging 9.3 ppg in her last four outings, including a career-high 15 points against North Carolina Central on Feb. 4.

The Game is Decided by the Opening Tip

In a bit of a statistical oddity, Liberty is a perfect 14-0 when Avery Warley wins the opening tip this season. When the opponent takes the jump ball, however, the Lady Flames are only 5-5.

Dominating Defensive Effort

The Lady Flames enjoyed a record-setting defensive performance Feb. 15 at Winthrop. Liberty established new program records for fewest points allowed (18) and lowest opponent field goal percentage (.119) during its 52-18 triumph.

Liberty also came just two points away from equaling the fewest points ever allowed in a game between two Division I women's basketball teams.

**Liberty in the
Big South Stats**
(Through Games of 2/16)

Team

Scoring Offense (4th)	66.0 ppg
Scoring Defense (1st)	47.6 ppg
Scoring Margin (1st)	+18.3 ppg
Free Throw Pct. (6th)646
Field Goal Pct. (1st)475
Field Goal Pct. Defense (1st) ..	.333
3-Pt. FG Pct. (4th)317
3-Pt. FG Pct. Defense (1st)256
3-Pt. FG Made (9th)	2.8/game
Rebounds (1st)	41.1 rpg
Opp. Rebounds (1st)	26.1 rpg
Rebounding Margin (1st) ..	+15.0 rpg
Offensive Rebounds (1st) ..	16.0 rpg
Defensive Rebounds (5th) ..	25.1 rpg
Blocked Shots (6th)	2.8 bpg
Assists (3rd)	13.2 apg
Steals (1st)	11.3 spg
Turnover Margin (6th)	+0.65
Asst./TO Ratio (4th)	0.65

Individual

Scoring

Devon Brown (1st)	16.7 ppg
Avery Warley (15th)	10.3 ppg
Amber Mays (25th)	8.5 ppg

Rebounding

Devon Brown (2nd)	8.8 rpg
Avery Warley (3rd)	8.4 rpg

Offensive Rebounds

Avery Warley (2nd)	3.7 rpg
Devon Brown (5th)	2.5 rpg
Kylee Beecher (14th)	1.9 rpg

Defensive Rebounds

Devon Brown (1st)	6.3 rpg
Avery Warley (5th)	4.7 rpg

Field Goal Pct.

Avery Warley (2nd)580
Devon Brown (4th)475

Assists

Amber Mays (2nd)	4.4 apg
------------------------	---------

Free Throw Pct.

Devon Brown (6th)747
-------------------------	------

Steals

Amber Mays (2nd)	2.4 spg
Devon Brown (10th)	1.8 spg

Three-Point FG Made

Devon Brown (11th)	1.3/game
--------------------------	----------

Blocked Shots

Avery Warley (7th)	0.7 bpg
Devon Brown (13th)	0.6 bpg

One Milestone Down, One to Go

Redshirt sophomore Avery Warley reached a career milestone during the Feb. 15 game at Winthrop. With her putback hoop 13:42 before halftime, Warley became the 50th player in program to score 500 career points.

Warley is also closing in on the 500-rebound milestone, as she has collected 457 boards during the first 57 games of her career. Only 20 Lady Flames have ever tallied 500 career rebounds.

Bravo to Brown

Devon Brown won the Big South Player of the Week award on Feb. 9, for the second time this season. She averaged 24.5 ppg and 11.0 rpg during the Lady Flames' road wins at High Point and Radford.

Brown is one of two conference players (also Gardner-Webb's Margaret Roundtree) to capture a pair of Big South Player of the Week awards so far in 2009-10. It also marked the fourth consecutive week a Liberty player received a conference award. Jelena Antic captured back-to-back Big South Freshman of the Week plaudits on Jan. 12 and 19, while Avery Warley was recognized as Big South Player of the Week on Jan. 26.

20/20 Vision

Devon Brown (29 points) and Avery Warley (26 points) both set new career highs for points during a Jan. 30, 75-62 victory at High Point. In the process, the duo became the first pair of Lady Flames to score 20 points in the same game since Megan Frazee had 22 points and sister Moriah Frazee added 20 in a 76-57 triumph over High Point on Jan. 29, 2008.

Brown and Warley's 55 combined points are the most by a Liberty duo in the same game since Nov. 25, 1997. That day, Elena Kisseleva (35 points) and Sharon Wilkerson (33 points) teamed up to score 68 points in an 85-77 home win over Campbell.

National Leader

Liberty, which has outrebounded 23 of its 24 opponents this season, ranks as the nation's No. 1 team in rebound margin, including games played through Feb. 18. The Lady Flames, who own a +14.5 rebound margin, have ranked among the nation's top five rebounding squads for six consecutive seasons. Liberty led the nation in rebound margin in back-to-back years, 2003-04 and 2004-05.

First-Half Defense

Points have come at a premium for Liberty's opponents during the first half this season. The Lady Flames limited Winthrop to 10 first-half markers on Feb. 15, the eighth time Liberty has held its opponent under 20 points in the opening period. The Lady Flames have gone on to win all eight contests.

Only three of Liberty's first 24 opponents have managed to score 30 points during the opening 20 minutes of play. The Lady Flames are yielding an average of just 23.0 points in the first half of games in 2009-10.

No Triples? No Problem

Liberty did not make any three-pointers during its win over Coastal Carolina on Saturday, shooting 0-5 from behind the arc. It was the eighth time this season that the Lady Flames have connected on either zero or one triples in a contest. Liberty is 7-1 in those games, despite its lack of three-point shooting.

70 is the Magic Number

Liberty is 8-0 this season when scoring at least 70 points in a game, extending a lengthy streak. The Lady Flames have now won 90 consecutive games when reaching the 70-point plateau offensively.

No. 24 Boston College was the most recent team to defeat Liberty when the Lady Flames tallied 70 points. The Eagles dealt the Lady Flames a 74-70 overtime loss, Dec. 6, 2003 at the Brown Classic.

Liberty has not dropped a game when scoring 70 points in regulation since Dec. 4, 2002. That day, the Lady Flames fell at Richmond by an 88-74 count.

Miscellaneous Stats For the 2009-10 Lady Flames

Team Scoring Leaders

Devon Brown	14 times
Avery Warley	5 times
Jelena Antic	3 times
Amber Mays	3 times
Kylee Beecher	1 time
Danika Dale	1 time
LaKendra Washington	1 time

20-Point Games

Devon Brown	6 times
Avery Warley	1 time
LaKendra Washington	1 time

Team Rebounding Leaders

Devon Brown	12 times
Avery Warley	10 times
Jelena Antic	3 times
Danika Dale	1 time

10-Rebound Games

Devon Brown	10 times
Avery Warley	9 times
Jelena Antic	2 times

Team Assist Leaders

Amber Mays	17 times
Rachel McLeod	6 times
Devon Brown	4 times
Jelena Antic	2 times
Dymond Morgan	2 times
Kylee Beecher	1 time
Danika Dale	1 time
Avery Warley	1 time

5-Assist Games

Amber Mays	9 times
Dymond Morgan	2 times
Rachel McLeod	1 time

Team Steal Leaders

Devon Brown	9 times
Amber Mays	9 times
LaKendra Washington	6 times
Dymond Morgan	5 times
Kylee Beecher	3 times
Rachel McLeod	3 times
Danika Dale	1 time
Avery Warley	1 time

3-Steal Games

Amber Mays	10 times
Devon Brown	9 times
Dymond Morgan	6 times
LaKendra Washington	6 times
Jelena Antic	2 times
Danika Dale	2 times
Rachel McLeod	2 times
Avery Warley	2 times
Kylee Beecher	1 time

Team Blocked Shot Leaders

Avery Warley	11 times
Devon Brown	9 times
Danika Dale	6 times
Carra Coy	5 times
Kylee Beecher	3 times
LaKendra Washington	2 times
Jelena Antic	1 time
Amber Mays	1 time

3-Block Games

Avery Warley	2 times
--------------	---------

Including Ties

Big Wins, Tight Losses

The Lady Flames' 19 victories this season have come by an average of 24.1 points. Liberty's tightest win was a 57-55 home victory over Coastal Carolina on Saturday.

Meanwhile, Liberty has lost its five games by a total of 33 points. James Madison posted the widest margin of victory over the Lady Flames, defeating Liberty 60-50, Dec. 1 at the Vines Center.

Double-Double x 2

Before Jan. 12, the Lady Flames had not seen a pair of players record double-doubles in the same game since Nov. 24, 2007. However, Liberty has accomplished the feat four times in its last 11 games.

Longwood (Jan. 12): Jelena Antic (19 pts., 10 rebs.) & Devon Brown (16 pts., 13 rebs.)
Coastal Carolina (Jan. 25): D. Brown (17 pts., 10 rebs.) & A. Warley (15 pts., 12 rebs.)
High Point (Jan. 30): Devon Brown (29 pts., 11 rebs.) & Avery Warley (26 pts., 14 rebs.)
Gardner-Webb (Feb. 8): D. Brown (13 pts., 13 rebs.) & A. Warley (15 pts., 10 rebs.)

Amber Accumulates Assists

Senior Amber Mays tallied a career-high 10 assists during a Jan. 9, 67-38 victory over Winthrop, the most by a Lady Flame since Nov. 22, 2002. That evening, Daina Staugaitiene dished out 10 helpers in a 90-35 season-opening win over Morgan State.

Mays is currently averaging 4.3 assists per contest on the year. No Liberty point guard has averaged that many assists for an entire season since 1998-99, when Sarah Wilkerson distributed 4.4 apg.

Tournament Tested

Liberty has played in a pair of tournaments this season, the Navy Classic (Nov. 20-21) and the Marriott Cavalier Classic (Dec. 28-29). The Lady Flames won the Navy Classic, while finishing second at this week's Marriott Cavalier Classic.

Liberty has won four regular-season tournament championships during the last three years, a list which also includes the 2008 National City Xavier Invitational, the 2008 UNLV Lady Rebel Christmas Classic and the 2009 Hokie Hardwood Classic.

Wanted for Theft

Liberty has employed an aggressive, trapping defense this season, helping the Lady Flames pace the Big South with 11.3 steals per contest. Liberty has tallied double-digit steals 17 times in its first 24 games of the year, after doing so only nine times during the entire 2008-09 campaign. Leading the way is senior Amber Mays, who has accounted for 56 of the Lady Flames' 271 thefts.

The Container is Half Full

This season, the Lady Flames are 9-0, when shooting 50 percent or higher from the field. Liberty is now 68-0 under head coach Carey Green, when the Lady Flames sink at least half of their field goals.

Painting a Masterpiece

Last season, Liberty regularly controlled the area around the basket, outscoring 29 of 33 opponents in the "points in the paint" statistical category.

This year, the Lady Flames are off to an outstanding start in racking up "points in the paint" once again. Liberty has outscored all 24 opponents inside the paint in 2009-10, by an average margin of 23.9 points (39.3 to 15.4).

13 x 10 for No. 40

Redshirt freshman Devon Brown scored a team-high 14 points during Saturday's game versus Coastal Carolina, putting her in double figures for the 13th straight game. Gardner-Webb was the last opponent to hold the Big South's leading scorer under 10 points, limiting Brown to nine tallies on Jan. 2.

2009 graduate Megan Frazee set the school record by scoring in double figures 68 straight times (Jan. 27, 2007 through March 15, 2009).

Liberty's Record ...

When Liberty controls the tip	14-0
When opponent controls the tip.....	5-5
Played at home.....	10-2
Played on the road	7-3
Played at a neutral site	2-0
Played a team with a .500+ record.....	9-5
Played a team with a .500 record.....	2-0
Played a team with a below .500 record.....	8-0
When Liberty leads at the half	16-1
When opponent leads at the half.....	3-3
When there is a tie at the half.....	0-1
When Liberty leads with 5:00 left.....	19-1
When opponent leads with 5:00 left	0-4
When there is a tie with 5:00 left	0-0
When Liberty leads with 1:00 left.....	19-0
When opponent leads with 1:00 left	0-4
When there is a tie with 1:00 left	0-1
When Liberty outrebounds opponent	19-4
When opponent outrebounds Liberty	0-1
When the teams' rebound totals are equal...	0-0
When Liberty shoots 50% or better (FG).....	9-0
When Liberty shoots less than 50% (FG)...	10-5
When Liberty outshoots its opponents	18-2
When opponents outshoot Liberty	1-3
When the teams shoot the same pct	0-0
When Liberty shoots more 3-pointers.....	4-1
When opponent shoots more 3-pointers	15-4
When same amount of 3-pointers shot.....	0-0
When Liberty shoots more free throws	17-1
When opponent shoots more free throws.....	2-4
When same number of free throws taken.....	0-0
When opponent shoots 50% or better (FG).....	0-1
When opponent shoots less than 50% (FG).....	19-4
When Liberty has more turnovers	7-3
When opponent has more turnovers	10-2
When turnovers are the same	2-0
When Liberty blocks more shots	11-2
When opponent blocks more shots	4-2
When blocks are the same	4-1
When Liberty has more steals	15-4
When opponent has more steals.....	3-1
When steals are the same.....	1-0
When Liberty bench outscores opponent... ..	13-1
When opponent bench outscores Liberty	6-4
When both benches score the same	0-0
When Liberty scores 50 or fewer points	0-1
When Liberty scores 51-60 points	6-2
When Liberty scores 61-70 points	6-2
When Liberty scores 71-80 points	4-0
When Liberty scores 81 or more points.....	3-0
When the game is decided by 1-5 points	1-2
When the game is decided by 6-10 points	1-3
When the game is decided by 11+ points.....	17-0
November Games	5-0
December Games	2-3
January Games	8-1
February Games.....	4-1
March Games	0-0
Sunday	0-0
Monday	5-1
Tuesday.....	3-3
Wednesday.....	0-0
Thursday.....	1-0
Friday.....	2-0
Saturday	8-1
When wearing white uniforms	12-2
When wearing red uniforms.....	2-0
When wearing blue uniforms.....	5-3

All-Time Winningest Coaches

Through 10 seasons at Liberty, head coach Carey Green remains in elite company. He ranks as the ninth-winningest NCAA Division I women's basketball coach of all time, entering the 2009-10 campaign with a .755 career winning percentage. Here is a look at the top 15 coaches on the all-time list.

Coach, Team(s)	Yrs.	Won	Lost	Pct.
1) Leon Barmore, Louisiana Tech	20	576	87	.867
2) Geno Auriemma, Connecticut	24	696	122	.851
3) Pat Summitt, Tennessee	35	1,005	193	.839
4) Tara VanDerveer, Idaho, Ohio St., Stanford	30	757	193	.797
5) Bill Sheahan, Mt. St. Mary's	17	372	104	.782
6) Robin Selvig, Montana	31	725	204	.780
7) Gail Goestenkors, Duke, Texas	17	439	124	.780
8) Wes Moore, Maryville, F. Marion, Chattanooga	20	466	132	.779
9) Carey Green, Liberty	10	237	77	.755
10) Andy Landers, Georgia	30	725	239	.752
11) Marsha Sharp, Texas Tech	24	571	189	.751
12) C. Vivian Stringer, Cheyney, Iowa, Rutgers	38	825	280	.747
13) Jody Conradt, Sam Houston St., UTA, Texas	38	900	309	.744
14) Sylvia Hatchell, F. Marion, North Carolina	34	812	282	.742
15) Van Chancellor, Mississippi, LSU	21	489	171	.741

Longest-Tenured Assistant Coaches

The 2009-10 season is Heather Stephens' seventh campaign as an assistant coach on Carey Green's coaching staff. This season, she snapped a tie with Jeri (Wiley) Porter as the longest-tenured assistant coach in Liberty women's basketball history. Porter is now the head coach at George Mason.

The Lady Flames have gone 165-50 and won five Big South titles during Stephens' tenure and made the "Sweet 16" of the 2005 NCAA Tournament.

Same Number, New Face

A new Lady Flame is wearing No. 40 this year, after Megan Frazee donned the number for the last four seasons. Among many other accomplishments and accolades, Frazee graduated as the No. 2 scorer (1,883 points) and No. 3 rebounder (951 rebounds) in program history, leaving some very big shoes to fill.

Liberty's new No. 40, Devon Brown, has worn the number proudly so far. The redshirt freshman from Waynesboro, Va. is averaging a Big South-high 16.6 ppg and 8.7 rpg, pacing the Lady Flames in both categories. No freshman has finished the year as the conference's leading scorer since Liberty's Elena Kisseleva in 1996-97.

Tallest Since Feenstra

Carra Coy, one of three new freshmen on this year's team, stands 6-6. That makes the Summerville, S.C., native the tallest Lady Flame since 6-8 Katie Feenstra graduated after the 2004-05 campaign.

International Flavor

Freshman Jelena Antic hails from Skopje, Macedonia and sophomore Tolu Omotola was born in London, England, giving Liberty international players on its roster for the 16th consecutive season. The last time the Lady Flames' roster consisted solely of American-born players was the 1993-94 campaign. Every Carey Green-coached team at Liberty has featured at least one international player.

Local Flavor

Even though Jelena Antic was born in Macedonia, she played high school basketball at Liberty Christian Academy in Lynchburg, Va. She is one of four current Lady Flames who attended high school within 70 miles of the Liberty campus, joining Kylee Beecher (Hidden Valley), Devon Brown (Waynesboro) and Brittany Campbell (Brookville).

Top 50 Scorers in Liberty History

1. Elena Kisseleva	2,154
2. Megan Frazee	1,883
3. Katie Feenstra	1,845
4. Sharon Wilkerson	1,733
5. Sarah Wilkerson	1,331
6. Ginny Holloway	1,180
7. Sharon Snodgrass	1,169
8. Kristal Tharp	1,161
9. Moriah Frazee	1,147
10. Pam Wilder	1,120
11. Brenda Gunsallus	1,078
12. Cynthia Thomson	1,055
13. Dawn Coleman	908
14. Daina Staugaitiene	846
15. Sandra Bridges	822
16. Reggie Gomes	810
17. Kristi Mercer	809
18. Lil Cooper	808
19. Michelle Fricke	803
20. Stacey White	801
21. Malynda Keck	792
22. Sheila Ford	761
23. Pam Stanfield	752
24. Michelle Wyms	748
25. Sharon Freet	727
26. Jeri Wiley	717
27. Annetta Paraham	705
28. Trish Harris	697
29. Allyson Fasnacht	672
30. Courtney Watkins	669
31. Rachel Hammond	663
32. Harriett Blair	651
33. Meribeth Feenstra	628
34. Monique Leonard	624
35. Rachel Young	610
36. Kristina Palaimaite	600
37. Carla Weaver	594
38. Theresa Bream	589
39. Anna Barrington	579
40. Molly Frazee	571
41. Missy Roberts	560
42. Erin Wall	551
43T. Beth Ralph	547
43T. Irene Sloof	547
45. Angie Johnson	545
46. Kathy Wooten	543
47. Stephanie Walker	524
48. Jennifer Fairfax	513
49. Trena Criss	509
50. Avery Warley	507
Other Current Players:	
Amber Mays	452
Devon Brown	398
Rachel McLeod	387

Gaining Some National Recognition

Liberty earned a single vote in the most recent ESPN/USA Today Coaches Top 25 Poll, released on Dec. 8, marking the second straight week the Lady Flames received a vote.

Liberty also collected one vote in the AP Top 25 Poll, released on Nov. 30.

Turning Up the Heat in the Furnace

The 2009-10 campaign is the 18th season the Liberty women's basketball team has called the Vines Center its full-time home. The "Furnace" has served as a favorable venue for the Lady Flames over the years. Liberty is 198-53 (.789) all-time at the Vines Center, including 10-2 last season.

The Lady Flames are 10-2 to start this year's 15-game home schedule and are 106-11 in their last 116 home games, dating back to the 2001-02 season.

Corralling the Caroms

Liberty has ranked among the nation's top five teams in rebounding margin for six consecutive seasons, including a No. 2 listing in 2008-09. Even though two of the top three rebounders from last year's squad graduated, the Lady Flames have hit the boards hard again this season.

Liberty has won the rebounding battle in 23 of its first 24 games this season, by a nation-high average of 14.5 boards per contest. Leading the way are redshirt freshman Devon Brown (8.7 rpg) and redshirt sophomore Avery Warley (8.4 rpg).

Lack of Overtime

Liberty has played only one overtime game in its last 203 outings, a 64-62 setback at High Point on Jan. 20, 2007. Since that contest at the Millis Center, the Lady Flames have played 102 consecutive games without needing extra time. No players on Liberty's current roster have competed in an overtime game with the Lady Flames.

The Lady Flames' most recent overtime victory came on Jan. 6, 2004, when Liberty defeated American, 76-72, on the road in double overtime.

Liberty's most recent overtime contest at the Vines Center was a memorable one. The Lady Flames defeated Virginia, 77-69, in overtime on Nov. 26, 2002, to claim their first-ever win over the Cavaliers. It also marked Liberty's first win over a ranked opponent, as Virginia entered the game with a No. 25 national ranking.

Big Shoes to Fill

Seven seniors graduated from last year's Liberty team, which went 24-9 and won its second consecutive Big South title. Alexandria Bream, Megan Frazee, Molly Frazee, Moriah Frazee, Rachel Hammond, Rebecca Lightfoot and Jessica Nelson accounted for 57.0 percent of the Lady Flames' points and 41.7 percent of the team's rebounds in 2008-09.

Headlining the group was Megan Frazee, who claimed the Big South Player of the Year and Big South Championship MVP awards.

Youth will be Served

Underclassmen have stepped up to fill the void left by the seven seniors who graduated from the 2008-09 Liberty roster. Through the first 24 games of the 2009-10 campaign, the Lady Flames' freshmen and sophomores are accounting for 72.7 percent of the team's points and 74.8 percent of Liberty's rebounds.

The Lady Flames' top five rebounders are all either freshmen or sophomores, as are four of their top five scorers.

There is Only One

Starting point guard Amber Mays is the only senior on this year's team roster. Liberty has not had so few seniors since the 2005-06 Lady Flames played the season without a single senior.

Mays has played well during her final collegiate campaign, leading the Lady Flames in assists (4.3 apg) and steals (2.3 apg), while ranking second in field goal percentage (.542) and third in scoring (8.6 ppg).

Top 50 Rebounders in Liberty History

1. Katie Feenstra	1,033
2. Sharon Snodgrass	1,026
3. Megan Frazee	951
4. Elena Kisseleva	876
5. Carla Weaver	859
6. Sharon Wilkerson	625
7. Moriah Frazee	601
8. Sharon Freet	590
9. Kristina Palaimaite	586
10. Pam Stanfield	583
11. Lil Cooper	578
12. Annetta Paraham	556
13. Meribeth Feenstra	547
14. Theresa Bream	536
15. Jennifer Fairfax	533
16T. Wendy Johnson	532
16T. Malynda Keck	532
18. Pam Wilder	529
19. Kathy Wooten	504
20. Michelle Fricke	500
21. Helen Gomes	493
22. Trish Harris	484
23. Flori Willie	478
24. Michelle Wyrms	472
25. Kristal Tharp	466
26. Avery Warley	457
27. Stacey White	456
28. Lynn Beardslee	450
29. Karolina Piotrkiewicz	445
30. Sarah Wilkerson	442
31. Erin Wall	423
32T. Ginny Holloway	420
32T. Daina Staugaitiene	420
34. Dawn Coleman	405
35. Jayne Mottershead	401
36. Sheila Ford	395
37. Angie Johnson	389
38. Trena Criss	370
39. Erma Williams	357
40. Rebecca Lightfoot	351
41. Courtney Watkins	327
42. Crystal Peace	320
43. Molly Frazee	319
44. Monique Leonard	315
45. Harriett Blair	310
46. Reggie Gomes	308
47. Jamie Feagin	303
48. Rachel Young	301
49. Roli-Ann Nikagbatse	296
50T. Rachel Hammond	287
50T. Beth Ralph	287

Other Current Players:

Kylee Beecher	237
Devon Brown	208
Rachel McLeod	182

A Tale of Two Halves

Liberty has regularly stepped up its level of play during the second half this season. The Lady Flames are outscoring opponents by an average score of 35.4-24.9 during the final 20 minutes of play, thus far this season.

Liberty is shooting .498 from the field after halftime, while limiting opponents to a .327 second-half field goal percentage.

Furious Comeback

The Lady Flames fell behind Navy, 20-4, 7:56 into the Navy Classic championship game on Nov. 21. Liberty then outscored the host Midshipmen, 51-23, during the remainder of the game to claim an improbable 55-43 victory.

It was the Lady Flames' largest comeback since Nov. 27, 2001, in a matchup with VCU at the Vines Center. The Rams owned a 38-22 advantage with 18:41 remaining in the second half, before the Lady Flames rallied for a 65-60 victory.

Furious Comeback, The Sequel

Liberty trailed host Coastal Carolina, 28-18, with 17 minutes remaining in their game on Jan. 25. The Lady Flames then outscored the Chanticleers by a 39-10 count the rest of the way, closing out their 57-38 with a game-ending 24-2 run.

Darlings of Defense

Strong defense has been a staple of all Carey Green-coached teams at Liberty, but this year's team has been one of his best defensive squads. Below is a comparison between the 2009-10 Lady Flames' defensive statistics and the existing school records.

Statistic: 2009-10 average (school record)

Opponent Points per Game: 47.9 ppg (52.6 ppg in 2008-09)

Opponent Field Goal Percentage: .337 (.328 in 2004-05)

Steals: 271/11.3 per game (347/11.2 per game in 1999-2000)

Warley Wins

Redshirt sophomore forward Avery Warley averaged 16.5 ppg and 14.0 rpg as Liberty went 2-0 on its annual South Carolina "Beach Trip." As a result, she earned the first Big South Player of the Week award of her career on Jan. 26.

Antic Repeats

Jelena Antic claimed her second consecutive Big South Freshman of the Week certificate on Jan. 19, after averaging 13.3 ppg and 5.7 rpg in a trio of Liberty victories.

She is the first Lady Flame to win back-to-back Big South Freshman of the Week honors since Feb. 12 and 19, 2002, when Kristal Tharp accomplished the feat.

Freshman of the Week

LaKendra Washington's 21-point, four-steal performance at Lafayette on Nov. 28 was recognized by the Big South Conference on Dec. 1. The freshman guard was named the Big South Freshman of the Week, marking the second consecutive week a Liberty rookie was honored by the Big South.

First Since Frazee

After averaging 21.0 ppg and 10.7 rpg during Liberty's 3-0 week, Devon Brown was honored as Big South Player of the Week on Nov. 24. She became the first Lady Flames freshman to win the award since Megan Frazee captured it twice during her rookie season (Dec. 5, 2005 & Jan. 16, 2006).

National Statistical Rankings

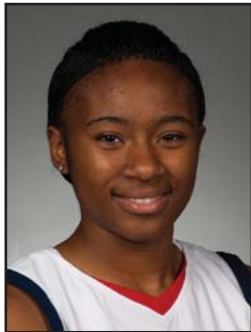
Through the contests of Feb. 18, the Lady Flames were ranked among the NCAA's top 15 teams in seven statistical categories. At that juncture, Liberty sat No. 1 in rebound margin (+15.0), No. 2 in scoring defense (47.6 ppg), No. 3 in field goal percentage (.333), No. 4 in both field goal percentage (.475) and three-point field goal percentage defense (.256), No. 9 in scoring margin (+18.3) and No. 15 in steals per game (11.3 spg).

Liberty's 2009-10 Starting Lineups

Game	Date	Opponent	Result	Guard	Guard	Guard	Forward	Forward	Record
1	Nov. 13	WSSU	W, 71-26	Mays	McLeod	Brown	Beecher	Warley	1-0
2	Nov. 17	UNCG	W, 60-42	Mays	McLeod	Brown	Beecher	Warley	2-0
3	Nov. 20	Tulane	W, 63-52	Mays	McLeod	Brown	Beecher	Warley	3-0
4	Nov. 21	Navy	W, 55-43	Mays	McLeod	Brown	Beecher	Warley	4-0
5	Nov. 28	Lafayette	W, 90-55	Mays	McLeod	Brown	Beecher	Warley	5-0
6	Dec. 1	JMU	L, 50-60	Mays	McLeod	Brown	Beecher	Warley	5-1
7	Dec. 5	Glennville St.	W, 86-45	Mays	McLeod	Brown	Beecher	Warley	6-1
8	Dec. 15	Auburn	L, 64-70	Mays	McLeod	Brown	Beecher	Warley	6-2
9	Dec. 28	Cornell	W, 70-40	Mays	McLeod	Brown	Antic	Warley	1-0
10	Dec. 29	Virginia	L, 54-63	Mays	McLeod	Brown	Antic	Warley	1-1
11	Jan. 2	G.-Webb	L, 65-70	Mays	McLeod	Brown	Antic	Warley	1-2
12	Jan. 5	N.C. A&T	W, 57-51	Mays	McLeod	Brown	Antic	Warley	2-2
13	Jan. 9	Winthrop	W, 67-38	Mays	McLeod	Brown	Antic	Warley	3-2
14	Jan. 12	Longwood	W, 78-55	Mays	McLeod	Brown	Antic	Warley	4-2
15	Jan. 16	Presbyterian	W, 73-27	Mays	McLeod	Brown	Antic	Warley	5-2
16	Jan. 18	UNCA	W, 82-40	Mays	McLeod	Brown	Antic	Warley	6-2
17	Jan. 23	CSU	W, 65-52	Mays	McLeod	Brown	Beecher	Warley	7-2
18	Jan. 25	Coastal Car.	W, 57-38	Mays	McLeod	Brown	Beecher	Warley	8-2
19	Jan. 30	High Point	W, 75-62	Mays	McLeod	Brown	Beecher	Warley	9-2
20	Feb. 1	Radford	W, 63-45	Mays	McLeod	Brown	Beecher	Warley	10-2
21	Feb. 4	N.C. Central	W, 64-44	Mays	McLeod	Brown	Beecher	Warley	11-2
22	Feb. 8	G.-Webb	L, 56-59	Mays	McLeod	Brown	Beecher	Warley	11-3
23	Feb. 15	Winthrop	W, 52-18	Mays	McLeod	Brown	Beecher	Warley	12-3
24	Feb. 20	Coastal Car.	W, 57-55	Mays	McLeod	Brown	Beecher	Warley	13-3

Miscellaneous Stats

Date	Opponent	LU Result	LU Big				Opp Big			LU in			Opp in		Paint		Off TOs		2nd Ch		Bench	
			Lead	Lead	Ties	LC	Lead	Lead	Tied	Lead	Lead	Tied	LU	Opp	LU	Opp	LU	Opp	LU	Opp	LU	Opp
Nov. 13	Winston-Salem State	W, 71-26	45	0	0	0	38:11	0:00	1:49	38	12	35	10	13	7	18	15					
Nov. 17	UNC Greensboro	W, 60-42	19	2	1	1	35:17	0:18	4:25	40	10	18	14	9	9	10	17					
Nov. 20	Tulane	W, 63-52	20	2	1	1	37:33	1:16	1:11	34	18	23	18	9	2	11	9					
Nov. 21	Navy	W, 55-43	12	16	0	1	12:24	26:56	0:40	26	12	16	12	16	6	8	11					
Nov. 28	Lafayette	W, 90-55	36	0	0	0	39:41	0:00	0:19	64	16	38	22	23	6	34	10					
Dec. 1	James Madison	L, 50-60	2	15	1	1	1:53	35:58	2:09	30	24	10	12	13	12	6	19					
Dec. 5	Glennville State	W, 86-45	42	0	0	0	39:56	0:00	0:04	64	10	19	17	15	16	34	20					
Dec. 15	Auburn	L, 64-70	2	14	2	4	0:54	37:50	1:16	42	20	16	11	6	16	8	25					
Dec. 28	Cornell	W, 70-40	36	0	0	0	39:48	0:00	0:12	44	6	22	12	15	6	24	9					
Dec. 29	No. 21/23 Virginia	L, 54-63	6	11	6	17	15:09	21:19	3:32	36	28	14	35	14	7	16	21					
Jan. 2	Gardner-Webb	L, 65-70	0	13	4	0	0:00	37:52	2:08	34	20	13	21	10	5	20	17					
Jan. 5	North Carolina A&T	W, 57-51	14	2	1	2	37:12	1:21	1:27	32	18	21	20	17	0	9	7					
Jan. 9	Winthrop	W, 67-38	35	7	2	3	30:52	5:41	3:27	34	12	29	8	10	2	25	21					
Jan. 12	Longwood	W, 78-55	24	0	0	0	39:24	0:00	0:36	54	18	27	24	19	11	19	26					
Jan. 16	Presbyterian	W, 73-27	49	0	0	0	39:45	0:00	0:15	38	12	39	6	7	4	21	12					
Jan. 18	UNC Asheville	W, 82-40	46	0	2	0	37:08	0:00	2:52	38	12	33	12	23	11	33	11					
Jan. 23	Charleston Southern	W, 65-52	18	0	0	0	39:56	0:00	0:04	48	6	13	19	16	7	9	18					
Jan. 25	Coastal Carolina	W, 57-38	19	10	5	7	17:01	17:44	5:15	20	8	25	6	18	5	9	6					
Jan. 30	High Point	W, 75-62	13	9	10	11	13:29	20:16	6:15	42	22	16	9	16	2	8	21					
Feb. 1	Radford	W, 63-45	18	2	2	1	36:57	1:12	1:51	36	12	27	13	10	14	7	17					
Feb. 4	N.C. Central	W, 64-44	20	0	0	0	39:08	0:00	0:52	42	22	17	13	20	8	21	17					
Feb. 8	Gardner-Webb	L, 56-59	9	6	2	8	26:46	10:47	2:27	34	30	18	15	15	5	9	11					
Feb. 15	Winthrop	W, 52-18	34	0	0	0	38:42	0:00	1:18	30	8	19	7	11	0	20	13					
Feb. 20	Coastal Carolina	W, 57-55	12	5	2	2	35:46	2:33	1:41	44	12	16	19	5	5	17	5					



1
LaKendra
Washington
5-8 Freshman Guard
Milwaukee, Wis.
The Hope School

Season/Career Highs

Points - 21
at Lafayette (11-28-09)
FG Made - 9
at Lafayette (11-28-09)
FG Attempts - 12 (Two times)
Most recently, at Lafayette (11-28-09)
3FG Made - 2 (Three times)
Most recently, vs. NCCU (02-04-10)
3FG Attempts - 6
vs. Winston-Salem State (11-13-09)
FT Made - 2 (Three times)
Most recently, at Lafayette (11-28-09)
FT Attempts - 4 (Two times)
Most recently, at Lafayette (11-28-09)
Rebounds - 5 (Three times)
Most recently, at Virginia (12-29-09)
Assists - 2 (Four times)
Most recently, vs. NCCU (02-04-10)
Steals - 5
vs. Winston-Salem State (11-13-09)
Blocks - 1 (Three times)
Most recently, vs. NCCU (02-04-10)

2009-10 Game-By-Game Statistics

OPPONENT	DATE	MIN	FG-FGA	3FG-FGA	FT-FTA	OFF-DEF-TOT	A	TO	BLK	STL	PTS
Winston-Salem St.	11-13-09	22	4-12	1-6	0-0	0-2-2	1	3	0	5	9
UNC Greensboro	11-17-09	9	0-2	0-2	2-2	0-0-0	0	0	0	1	2
Tulane	11-20-09	10	1-2	0-1	0-0	0-1-1	0	2	1	0	2
Navy	11-21-09	15	2-3	0-0	2-4	0-4-4	0	1	0	0	6
Lafayette	11-28-09	26	9-12	1-2	2-4	0-0-0	2	1	0	4	21
James Madison	12-01-09	8	1-4	0-0	0-0	1-0-1	0	0	0	0	2
Glenville St.	12-05-09	20	4-9	0-0	0-0	1-4-5	2	5	0	2	8
Auburn	12-15-09	11	1-3	0-1	0-0	0-1-1	0	0	0	0	2
Cornell	12-28-09	21	4-10	0-3	1-2	1-4-5	2	3	1	2	9
Virginia	12-29-09	15	2-4	0-0	1-1	3-2-5	1	3	0	2	5
Gardner-Webb	01-02-10	7	0-2	0-0	0-0	0-0-0	0	0	0	1	0
N.C. A&T	01-05-10	14	0-4	0-1	0-0	1-1-2	0	2	0	0	0
Winthrop	01-09-10	17	2-5	1-2	0-0	1-0-1	1	1	0	3	5
Longwood	01-12-10	8	0-2	0-2	1-2	2-0-2	1	4	0	0	1
Presbyterian	01-16-10	20	3-5	0-2	0-0	1-2-3	0	5	0	2	6
UNC Asheville	01-18-10	16	2-6	2-4	0-3	1-0-1	0	2	0	4	6
Charleston So.	01-23-10	13	2-3	0-1	0-0	0-1-1	0	0	0	1	4
Coastal Carolina	01-25-10	12	2-3	2-2	1-2	0-1-1	0	0	0	0	7
High Point	01-30-10	3	0-0	0-0	0-0	0-0-0	0	0	0	0	0
Radford	02-01-10	18	0-0	0-0	0-0	0-0-0	1	3	0	0	0
N.C. Central	02-04-10	21	2-3	2-3	0-0	1-1-2	2	4	1	3	6
Gardner-Webb	02-08-10	4	0-0	0-0	0-0	0-0-0	1	0	0	0	0
Winthrop	02-15-10	17	1-1	0-0	0-1	1-1-2	1	2	0	3	2
Coastal Carolina	02-20-10	12	2-3	0-1	0-0	0-1-1	0	0	0	0	4

2009-10 Notes/Highlights

- Tabbed Big South Freshman of the Week on Dec. 1.
- Became Liberty's first true freshman to score 20 points in a game since Megan Frazee during the 2005-06 season, when she exploded for 21 points at Lafayette on Nov. 28.
- Has made six of her last 11 triples, after making only three of 22 three-point attempts during the season's first 15 games.

Career Stats

Season	GP	GS	Min	Avg	FG	FGA	Pct	3FG	3FGA	Pct	FT	FTA	Pct	ORB	DRB	TOT	Avg	Asst	TO	Blk	Stl	Pts	Avg
2009-10	24	0	339	14.1	44	98	.449	9	33	.273	10	21	.476	14	26	40	1.7	15	41	3	33	107	4.5



11

Jelena Antic

*6-2 Freshman G/F
Skopje, Macedonia
Liberty Christian Academy*

Season/Career Highs

Points - 19
vs. Longwood (01-12-10)
FG Made - 8
vs. Longwood (01-12-10)
FG Attempts - 11
vs. Longwood (01-12-10)
3FG Made - 2
at Gardner-Webb (01-02-10)
3FG Attempts - 3
at Auburn (12-15-09)
FT Made - 6
vs. North Carolina A&T (01-05-10)
FT Attempts - 7
vs. North Carolina A&T (01-05-10)
Rebounds - 10 (Two times)
Most recently, vs. Longwood (01-12-10)
Assists - 4
vs. North Carolina A&T (01-05-10)
Steals - 3 (Two times)
Most recently, vs. Presby. (01-16-10)
Blocks - 1 (Two times)
Most recently, vs. N.C. A&T (01-05-10)

2009-10 Game-By-Game Statistics

OPPONENT	DATE	MIN	FG-FGA	3FG-FGA	FT-FTA	OFF-DEF-TOT	A	TO	BLK	STL	PTS
Winston-Salem St.	11-13-09					Did not play					
UNC Greensboro	11-17-09					Did not play					
Tulane	11-20-09					Did not play					
Navy	11-21-09	18	0-4	0-0	0-1	4-1-5	3	1	0	0	0
Lafayette	11-28-09	23	2-5	0-0	0-1	2-2-4	2	2	0	3	4
James Madison	12-01-09	12	0-3	0-1	1-2	0-4-4	0	2	0	0	1
Glenville St.	12-05-09	24	5-8	0-0	2-4	2-8-10	0	6	0	1	12
Auburn	12-15-09	23	2-8	0-3	0-0	2-1-3	1	3	0	1	4
Cornell	12-28-09	21	4-5	1-1	2-2	4-4-8	2	1	0	0	11
Virginia	12-29-09	34	2-7	1-1	0-0	3-0-3	3	1	1	0	5
Gardner-Webb	01-02-10	25	4-6	2-2	0-0	3-2-5	1	1	0	0	10
N.C. A&T	01-05-10	29	4-8	0-0	6-7	1-3-4	4	3	1	1	14
Winthrop	01-09-10	27	4-7	0-1	1-1	3-3-6	1	3	0	1	9
Longwood	01-12-10	30	8-11	0-0	3-5	5-5-10	2	5	0	2	19
Presbyterian	01-16-10	24	7-7	0-0	0-0	1-2-3	1	3	0	3	14
UNC Asheville	01-18-10	18	3-5	1-1	0-0	4-0-4	0	3	0	0	7
Charleston So.	01-23-10					Did not play					
Coastal Carolina	01-25-10					Did not play					
High Point	01-30-10					Did not play					
Radford	02-01-10					Did not play					
N.C. Central	02-04-10					Did not play					
Gardner-Webb	02-08-10					Did not play					
Winthrop	02-15-10					Did not play					
Coastal Carolina	02-20-10	20	0-2	0-1	2-4	1-2-3	1	2	0	2	2

2009-10 Notes/Highlights

- Returned to action versus Coastal Carolina on Feb. 20, after missing seven games due to a leg injury.
- Won her second consecutive Big South Freshman of the Week award on Jan. 19, after contributing 13.3 ppg and 5.7 rpg, while shooting 78.3 percent (18-of-23) from the field, during Liberty's 3-0 week.
- Liberty's first player to win consecutive Big South Freshman of the Week honors since Kristal Tharp did so Feb. 12 and 19, 2002.
- Previously named Big South Freshman of the Week on Jan. 12, after posting 11.0 ppg, 5.0 rpg and 2.5 apg during wins over North Carolina A&T and Winthrop.
- Made her first appearance in the starting lineup, Dec. 28 versus Cornell.
- Has made 13 of her last 17 field goal attempts, dating back to the second half of the Longwood game (Jan. 12).
- Has connected on five of her last seven three-pointers, dating back to a Dec. 28 victory over Cornell.

Career Stats

Season	GP	GS	Min	Avg	FG	FGA	Pct	3FG	3FGA	Pct	FT	FTA	Pct	ORB	DRB	TOT	Avg	Asst	TO	Blk	Stl	Pts	Avg
2009-10	14	8	328	23.4	45	86	.523	5	11	.455	17	27	.630	35	37	72	5.1	21	36	2	14	112	8.0



12

Danika Dale

6-1 Sophomore G/F
Fort Hood, Texas
Shoemaker HS

Season Highs

Points - 15

vs. N.C. Central (02-04-10)

FG Made - 5

vs. N.C. Central (02-04-10)

FG Attempts - 8

at Winthrop (02-15-10)

3FG Made - 1 (Five times)

Most recently, vs. G.-Webb (02-08-10)

3FG Attempts - 3 (Two times)

Most recently, vs. Presby. (01-16-10)

FT Made - 5

vs. N.C. Central (02-04-10)

FT Attempts - 8

vs. N.C. Central (02-04-10)

Rebounds - 9

vs. Glenville State (12-05-09)

Assists - 3 (Three times)

Most recently, vs. Winthrop (01-09-10)

Steals - 3 (Two times)

Most recently, vs. Glen. St. (12-05-09)

Blocks - 2 (Four times)

Most recently, at Radford (02-01-10)

Career Highs

Points - 15

vs. N.C. Central (02-04-10)

FG Made - 5

vs. N.C. Central (02-04-10)

FG Attempts - 8

at Winthrop (02-15-10)

3FG Made - 2

vs. Auburn (12-07-08)

3FG Attempts - 3 (Four times)

Most recently, vs. Presby. (01-16-10)

FT Made - 5

vs. N.C. Central (02-04-10)

FT Attempts - 9

vs. Saint Paul's (12-13-08)

Rebounds - 9

vs. Glenville State (12-05-09)

Assists - 6

vs. Presbyterian (03-02-09)

Steals - 4

vs. Saint Paul's (12-13-08)

Blocks - 2 (Four times)

Most recently, at Radford (02-01-10)

2009-10 Game-By-Game Statistics

OPPONENT	DATE	MIN	FG-FGA	3FG-FGA	FT-FTA	OFF-DEF-TOT	A	TO	BLK	STL	PTS
Winston-Salem St.	11-13-09	23	1-5	0-2	4-4	2-5-7	3	3	2	3	6
UNC Greensboro	11-17-09	16	0-3	0-0	0-0	1-3-4	0	1	2	2	0
Tulane	11-20-09	11	0-1	0-0	0-0	1-0-1	1	1	0	2	0
Navy	11-21-09	3	0-2	0-2	0-0	1-1-2	1	0	0	0	0
Lafayette	11-28-09	15	2-2	1-1	1-2	0-4-4	1	0	0	0	6
James Madison	12-01-09	21	1-4	1-1	0-0	0-5-5	1	2	2	0	3
Glenville St.	12-05-09	19	2-3	0-0	2-3	1-8-9	3	4	0	3	6
Auburn	12-15-09	4	0-1	0-0	0-0	0-0-0	0	1	0	0	0
Cornell	12-28-09	19	2-4	0-1	1-2	3-4-7	2	0	0	0	5
Virginia	12-29-09	14	1-6	0-3	1-2	1-3-4	0	4	0	0	3
Gardner-Webb	01-02-10	12	4-5	1-2	1-2	0-0-0	1	2	0	0	10
N.C. A&T	01-05-10	10	1-2	0-0	0-1	0-2-2	1	2	0	0	2
Winthrop	01-09-10	20	2-3	0-1	0-0	2-3-5	3	1	0	1	4
Longwood	01-12-10	9	1-3	0-1	0-0	2-2-4	1	1	0	1	2
Presbyterian	01-16-10	18	2-6	1-3	0-0	2-3-5	1	3	0	1	5
UNC Asheville	01-18-10	12	2-4	0-1	1-1	2-1-3	1	2	1	1	5
Charleston So.	01-23-10	19	1-4	0-1	1-2	2-2-4	2	3	0	1	3
Coastal Carolina	01-25-10	24	0-2	0-0	0-0	0-4-4	2	1	1	2	0
High Point	01-30-10	21	0-2	0-0	2-2	1-1-2	0	0	0	1	2
Radford	02-01-10	20	1-2	0-0	0-0	0-1-1	0	1	2	1	2
N.C. Central	02-04-10	23	5-7	0-0	5-8	2-1-3	2	3	1	0	15
Gardner-Webb	02-08-10	21	2-3	1-1	1-1	0-0-0	0	1	0	0	6
Winthrop	02-15-10	23	4-8	0-0	3-3	1-4-5	0	5	0	0	11
Coastal Carolina	02-20-10	12	1-1	0-0	3-4	0-0-0	0	0	0	0	5

2009-10 Notes/Highlights

-- Is averaging 9.3 ppg in her last three contests, more than three times above her career scoring average of 2.9 ppg.

Career Stats

Season	GP	GS	Min	Avg	FG	FGA	Pct	3FG	3FGA	Pct	FT	FTA	Pct	ORB	DRB	TOT	Avg	Asst	TO	Blk	Stl	Pts	Avg
2008-09	26	0	254	9.8	16	45	.356	3	15	.200	8	18	.444	10	33	43	1.7	21	27	2	12	43	1.7
2009-10	24	0	389	16.2	35	83	.422	5	20	.250	26	37	.703	24	57	81	3.4	26	41	11	19	101	4.2
TOTAL	50	0	643	12.9	51	128	.398	8	35	.229	34	55	.618	34	90	124	2.5	47	68	13	31	144	2.9



15

Kylee Beecher
6-4 Sophomore F
Roanoke, Va.
Hidden Valley HS

Season Highs

Points - 14 (Two times)

Most recently, vs. UNCA (01-18-10)

FG Made - 7

vs. Glenville State (12-05-09)

FG Attempts - 9

at Charleston So. (01-23-10)

3FG Made - 1

at Winthrop (02-15-10)

3FG Attempts - 2 (Three times)

Most recently, at Winthrop (02-15-10)

FT Made - 8

vs. UNC Asheville (01-18-10)

FT Attempts - 10

vs. UNC Asheville (01-18-10)

Rebounds - 9 (Three times)

Most recently, at Radford (02-01-10)

Assists - 4

vs. N.C. Central (02-04-10)

Steals - 3

at Radford (02-01-10)

Blocks - 2

at Winthrop (02-15-10)

Career Highs

Points - 18

vs. Saint Paul's (12-13-08)

FG Made - 7

vs. Glenville State (12-05-09)

FG Attempts - 10

vs. Saint Paul's (12-13-08)

3FG Made - 1 (Three times)

Most recently, at Winthrop (02-15-10)

3FG Attempts - 2 (Five times)

Most recently, at Winthrop (02-15-10)

FT Made - 8

vs. UNC Asheville (01-18-10)

FT Attempts - 10

vs. UNC Asheville (01-18-10)

Rebounds - 10 (Three times)

Most recently, vs. High Point (01-31-09)

Assists - 5

vs. Saint Paul's (12-13-08)

Steals - 3 (Three times)

Most recently, at Radford (02-01-10)

Blocks - 2

at Winthrop (02-15-10)

2009-10 Game-By-Game Statistics

OPPONENT	DATE	MIN	FG-FGA	3FG-FGA	FT-FTA	OFF-DEF-TOT	A	TO	BLK	STL	PTS
Winston-Salem St.	11-13-09	23	2-3	0-0	4-4	1-1-2	2	0	1	0	8
UNC Greensboro	11-17-09	37	4-8	0-0	3-7	2-3-5	0	4	0	0	11
Tulane	11-20-09	36	3-5	0-0	0-0	3-0-3	2	4	0	1	6
Navy	11-21-09	36	2-8	0-1	0-0	0-2-2	0	2	0	1	4
Lafayette	11-28-09	25	2-2	0-0	1-2	1-2-3	2	0	1	0	5
James Madison	12-01-09	26	2-4	0-0	0-0	3-3-6	1	1	1	2	4
Glenville St.	12-05-09	21	7-8	0-0	0-0	4-2-6	0	1	0	0	14
Auburn	12-15-09	25	1-4	0-0	5-6	0-0-0	1	0	0	2	7
Cornell	12-28-09	20	2-6	0-2	1-2	3-0-3	0	4	0	0	5
Virginia	12-29-09	21	2-4	0-1	2-2	2-0-2	0	0	0	0	6
Gardner-Webb	01-02-10	16	1-3	0-1	2-3	0-3-3	0	1	0	0	4
N.C. A&T	01-05-10	18	0-1	0-0	0-0	0-3-3	0	4	1	1	0
Winthrop	01-09-10	19	2-3	0-0	1-1	0-2-2	2	1	1	1	5
Longwood	01-12-10	25	3-5	0-0	4-5	1-5-6	1	3	0	0	10
Presbyterian	01-16-10	18	1-1	0-0	3-6	0-3-3	1	2	0	1	5
UNC Asheville	01-18-10	27	3-8	0-0	8-10	2-3-5	2	2	0	2	14
Charleston So.	01-23-10	33	4-9	0-0	2-2	4-5-9	0	2	0	2	10
Coastal Carolina	01-25-10	32	2-6	0-0	2-2	8-1-9	1	2	0	1	6
High Point	01-30-10	21	0-4	0-1	3-4	2-2-4	2	0	0	0	3
Radford	02-01-10	38	5-8	0-0	3-4	3-6-9	0	4	0	3	13
N.C. Central	02-04-10	19	1-7	0-0	1-2	1-1-2	4	3	0	0	3
Gardner-Webb	02-08-10	30	2-6	0-2	0-0	3-1-4	2	0	0	1	4
Winthrop	02-15-10	29	2-7	1-2	4-6	1-4-5	1	0	2	1	9
Coastal Carolina	02-20-10	25	4-7	0-1	1-1	1-0-1	0	2	0	1	9

2009-10 Notes/Highlights

-- Ranks No. 14 in the Big South with 1.9 offensive rebounds per game. (*Through games of 2/16*)

Career Stats

Season	GP	GS	Min	Avg	FG	FGA	Pct	3FG	3FGA	Pct	FT	FTA	Pct	ORB	DRB	TOT	Avg	Asst	TO	Blk	Stl	Pts	Avg
2008-09	31	4	664	21.4	54	118	.458	2	7	.286	27	38	.711	43	97	140	4.5	19	45	2	18	137	4.4
2009-10	24	16	620	25.8	57	127	.449	1	11	.091	50	69	.725	45	52	97	4.0	24	42	7	20	165	6.9
TOTAL	55	20	1284	23.3	111	245	.453	3	18	.167	77	107	.720	88	149	237	4.3	43	87	9	38	302	5.5



21
Amber Mays
5-6 Senior Guard
Pasadena, Calif.
Pasadena HS
(State Fair CC)

Season Highs

Points - 18
at Auburn (12-15-09)
FG Made - 9
at Auburn (12-15-09)
FG Attempts - 15
vs. James Madison (12-01-09)
3FG Made - 2
vs. UNC Asheville (01-18-10)
3FG Attempts - 2
vs. UNC Asheville (01-18-10)
FT Made - 4 (Two times)
Most recently, at Coastal (01-25-10)
FT Attempts - 7
at Coastal Carolina (01-25-10)
Rebounds - 5 (Two times)
Most recently, at High Point (01-30-10)
Assists - 10
vs. Winthrop (01-09-10)
Steals - 5
vs. Longwood (01-12-10)
Blocks - 1
at Charleston So. (01-23-10)

Career Highs

Points - 18
at Auburn (12-15-09)
FG Made - 9
at Auburn (12-15-09)
FG Attempts - 15
vs. James Madison (12-01-09)
3FG Made - 2 (Two times)
Most recently, vs. UNCA (01-18-10)
3FG Attempts - 3
at Vanderbilt (12-22-08)
FT Made - 6
at UNC Asheville (01-19-09)
FT Attempts - 8
vs. UC Riverside (11-21-08)
Rebounds - 6 (Two times)
Most recently, vs. Radford (02-02-09)
Assists - 10
vs. Winthrop (01-09-10)
Steals - 8
vs. East Tennessee St. (01-13-09)
Blocks - 1 (Three times)
Most recently, at CSU (01-23-10)

2009-10 Game-By-Game Statistics

OPPONENT	DATE	MIN	FG-FGA	3FG-FGA	FT-FTA	OFF-DEF-TOT	A	TO	BLK	STL	PTS
Winston-Salem St.	11-13-09	24	3-7	0-0	1-2	0-0-0	6	1	0	4	7
UNC Greensboro	11-17-09	26	4-7	1-1	2-6	0-1-1	4	5	0	4	11
Tulane	11-20-09	33	4-6	0-0	2-4	0-2-2	3	4	0	4	10
Navy	11-21-09	30	2-5	0-0	4-5	2-0-2	5	3	0	1	8
Lafayette	11-28-09	31	4-6	0-0	3-4	1-3-4	4	5	0	4	11
James Madison	12-01-09	33	7-15	0-1	0-1	0-2-2	2	1	0	1	14
Glenville St.	12-05-09	18	2-3	0-0	1-2	0-2-2	4	2	0	2	5
Auburn	12-15-09	35	9-13	0-0	0-0	0-1-1	3	6	0	4	18
Cornell	12-28-09	20	2-2	0-0	0-0	0-2-2	8	2	0	4	4
Virginia	12-29-09	28	2-4	0-0	3-4	0-0-0	3	7	0	3	7
Gardner-Webb	01-02-10	33	4-9	0-0	2-6	3-2-5	6	4	0	1	10
N.C. A&T	01-05-10	25	2-4	0-0	0-0	0-2-2	3	2	0	1	4
Winthrop	01-09-10	22	1-3	0-0	1-2	0-0-0	10	2	0	2	3
Longwood	01-12-10	30	3-4	1-1	0-0	0-0-0	3	5	0	5	7
Presbyterian	01-16-10	21	4-6	0-0	0-0	0-2-2	6	1	0	2	8
UNC Asheville	01-18-10	23	5-8	2-2	2-2	1-0-1	5	0	0	3	14
Charleston So.	01-23-10	27	6-9	0-0	2-5	0-0-0	3	1	1	1	14
Coastal Carolina	01-25-10	31	2-6	0-1	4-7	1-1-2	2	4	0	2	8
High Point	01-30-10	26	2-6	0-0	3-4	0-5-5	2	6	0	1	7
Radford	02-01-10	24	4-6	0-0	2-4	1-0-1	7	5	0	3	10
N.C. Central	02-04-10	28	3-6	0-0	2-2	0-2-2	8	4	0	1	8
Gardner-Webb	02-08-10	34	2-7	0-1	2-6	1-0-1	3	2	0	2	6
Winthrop	02-15-10	20	0-1	0-0	1-2	0-1-1	1	4	0	0	1
Coastal Carolina	02-20-10	34	6-10	0-0	0-0	1-2-3	2	1	0	1	12

2009-10 Notes/Highlights

- The only senior on Liberty's 2009-10 roster.
- Leads the Big South in assist-to-turnover ratio (1.33), while ranking No. 2 in both assists (4.4 apg) and steals (2.4 spg). (*Through games of 2/16*)
- Distributed a career-high 10 assists against Winthrop (Jan. 9), the most by a Lady Flame since Daina Staugaitiene's 10 assists versus Morgan State on Nov. 22, 2002.
- Had recorded a steal in 24 consecutive games, prior to the Feb. 15 game at Winthrop. Has notched a steal in 33 of her last 35 outings.
- In 11 Big South games this season, has totaled 47 assists and only 30 turnovers.
- First Lady Flame to distribute 100 assists in back-to-back seasons since Daina Staugaitiene did so three straight years (2002-03, 2003-04 and 2004-05).

Career Stats

Season	GP	GS	Min	Avg	FG	FGA	Pct	3FG	3FGA	Pct	FT	FTA	Pct	ORB	DRB	TOT	Avg	Asst	TO	Blk	Stl	Pts	Avg
2008-09	33	31	1002	30.4	92	201	.458	5	15	.333	56	86	.651	11	75	86	2.6	126	114	2	68	245	7.4
2009-10	24	24	656	27.3	83	153	.542	4	7	.571	37	68	.544	11	30	41	1.7	103	77	1	56	207	8.6
TOTAL	57	55	1658	29.1	175	354	.494	9	22	.409	93	154	.604	22	105	127	2.2	229	191	3	124	452	7.9



23

Avery Warley
 6-3 R-Sophomore F
 Washington, D.C.
 H.D. Woodson HS

Season Highs

Points - 26
 at High Point (01-30-10)
FG Made - 9
 at High Point (01-30-10)
FG Attempts - 13 (Two times)
 Most recently, at High Point (01-30-10)
3FG Made - 0
 None
3FG Attempts - 0
 None
FT Made - 8
 at High Point (01-30-10)
FT Attempts - 11
 at High Point (01-30-10)
Rebounds - 16
 at Charleston So. (01-23-10)
Assists - 2 (Three times)
 Most recently, vs. UNCA (01-18-10)
Steals - 3 (Two times)
 Most recently, vs. Coastal (02-20-10)
Blocks - 3 (Two times)
 Most recently, at Winthrop (02-15-10)

Career Highs

Points - 26
 at High Point (01-30-10)
FG Made - 9
 at High Point (01-30-10)
FG Attempts - 13 (Two times)
 Most recently, at High Point (01-30-10)
3FG Made - 0
 None
3FG Attempts - 0
 None
FT Made - 8
 at High Point (01-30-10)
FT Attempts - 11
 at High Point (01-30-10)
Rebounds - 18
 at Virginia Tech (12-30-08)
Assists - 3
 vs. Saint Paul's (12-13-08)
Steals - 3 (Four times)
 Most recently, vs. Coastal (02-20-10)
Blocks - 4 (Two times)
 Most recently, vs. Winthrop (02-16-09)

2009-10 Game-By-Game Statistics

OPPONENT	DATE	MIN	FG-FGA	3FG-FGA	FT-FTA	OFF-DEF-TOT	A	TO	BLK	STL	PTS
Winston-Salem St.	11-13-09	26	2-6	0-0	0-2	4-5-9	2	5	0	0	4
UNC Greensboro	11-17-09	19	0-0	0-0	0-0	2-5-7	0	1	0	1	0
Tulane	11-20-09	37	4-10	0-0	1-2	6-5-11	1	4	0	1	9
Navy	11-21-09	32	5-7	0-0	0-0	3-3-6	0	6	0	0	10
Lafayette	11-28-09	21	8-13	0-0	3-3	8-3-11	0	1	0	0	19
James Madison	12-01-09	29	3-7	0-0	3-4	3-4-7	2	2	0	1	9
Glenville St.	12-05-09	25	3-6	0-0	1-4	2-4-6	0	1	1	0	7
Auburn	12-15-09	33	4-6	0-0	2-2	3-3-6	0	2	0	0	10
Cornell	12-28-09	22	4-5	0-0	2-6	2-5-7	0	2	1	1	10
Virginia	12-29-09	32	6-12	0-0	0-0	3-5-8	0	5	0	2	12
Gardner-Webb	01-02-10	26	4-8	0-0	2-5	3-3-6	0	5	1	3	10
N.C. A&T	01-05-10	26	4-8	0-0	1-4	6-5-11	0	5	0	2	9
Winthrop	01-09-10	23	2-2	0-0	1-2	1-4-5	1	5	1	1	5
Longwood	01-12-10	21	6-7	0-0	0-1	3-2-5	1	1	0	0	12
Presbyterian	01-16-10	25	1-2	0-0	4-7	2-0-2	0	3	0	1	6
UNC Asheville	01-18-10	24	2-8	0-0	2-6	4-6-10	2	2	3	0	6
Charleston So.	01-23-10	30	8-12	0-0	2-4	5-11-16	0	2	0	0	18
Coastal Carolina	01-25-10	28	6-9	0-0	3-8	7-5-12	0	2	1	0	15
High Point	01-30-10	38	9-13	0-0	8-11	5-9-14	0	0	1	2	26
Radford	02-01-10	24	2-4	0-0	0-0	1-4-5	0	1	2	1	4
N.C. Central	02-04-10	34	8-11	0-0	0-1	6-5-11	0	2	1	1	16
Gardner-Webb	02-08-10	32	5-10	0-0	5-7	3-7-10	0	3	2	1	15
Winthrop	02-15-10	26	2-3	0-0	0-0	3-5-8	1	1	3	2	4
Coastal Carolina	02-20-10	20	2-6	0-0	1-2	4-4-8	1	4	1	3	5

2009-10 Notes/Highlights

- Named Big South Player of the Week on Jan. 26, after averaging 16.5 ppg and 14.0 rpg during Liberty's 2-0 South Carolina "Beach Trip."
- Ranks No. 2 in the Big South in field goal percentage (.580) and offensive rebounds (3.7 rpg), No. 3 in total rebounds (8.4 rpg), No. 5 in defensive rebounds (4.7 rpg) and No. 7 in blocked shots (0.7 bpg). (*Through games of 2/16*)
- Tabbed a "Rising Star" by the Richmond Times-Dispatch.
- Named to the Marriott Cavalier Classic all-tournament team, after averaging 11.0 ppg and 7.5 rpg in two games.
- Has tallied 457 career boards, putting her in 26th place in program history. Needs 10 rebounds to pass Kristal Tharp and become one of Liberty's top 25 all-time rebounders.
- Has scored 507 career points, putting her in 50th place in program history.
- Became the 50th Lady Flame ever to reach the 500-point milestone Feb. 15 at Winthrop, with a putback hoop, 13:42 before halftime.
- Has notched six double-doubles this season (at Lafayette on Nov. 28; at Charleston Southern on Jan. 23; at Coastal Carolina on Jan. 25; at High Point on Jan. 30; vs. N.C. Central on Feb. 4; vs. Gardner-Webb on Feb. 8) and eight in her career.
- Posted a double-double at High Point (Jan. 30) during the second half alone, recording 10 points and 10 rebounds after intermission.

Career Stats

Season	GP	GS	Min	Avg	FG	FGA	Pct	3FG	3FGA	Pct	FT	FTA	Pct	ORB	DRB	TOT	Avg	Asst	TO	Blk	Stl	Pts	Avg
2008-09	33	33	832	25.2	112	179	.626	0	0	.000	42	81	.519	85	171	256	7.8	11	76	47	23	266	8.1
2009-10	24	24	653	27.2	100	175	.571	0	0	.000	41	81	.506	89	112	201	8.4	11	65	18	23	241	10.0
TOTAL	57	57	1485	26.1	212	354	.599	0	0	.000	83	162	.512	174	283	457	8.0	22	141	65	46	507	8.9



25
Dymond Morgan
5-7 Junior Guard
Lynwood, Calif.
Lynwood HS
(Midland College)

Season/Career Highs

Points - 11
vs. Winthrop (01-09-10)
FG Made - 4
vs. Winthrop (01-09-10)
FG Attempts - 7 (Two times)
Most recently, at Winthrop (02-15-10)
3FG Made - 2
vs. Winthrop (01-09-10)
3FG Attempts - 3 (Two times)
Most recently, at Winthrop (02-15-10)
FT Made - 3 (Two times)
Most recently, at Radford (02-01-10)
FT Attempts - 4 (Two times)
Most recently, at Radford (02-01-10)
Rebounds - 7
vs. Glenville State (12-05-09)
Assists - 7
vs. Glenville State (12-05-09)
Steals - 5
vs. Presbyterian (01-16-10)
Blocks - 0
None

2009-10 Game-By-Game Statistics

OPPONENT	DATE	MIN	FG-FGA	3FG-FGA	FT-FTA	OFF-DEF-TOT	A	TO	BLK	STL	PTS
Winston-Salem St.	11-13-09	16	0-2	0-0	0-0	1-3-4	1	2	0	1	0
UNC Greensboro	11-17-09	24	3-5	0-1	0-0	1-4-5	2	2	0	1	6
Tulane	11-20-09	18	3-6	1-1	2-2	0-2-2	0	4	0	2	9
Navy	11-21-09	15	1-2	0-0	0-0	1-2-3	0	2	0	0	2
Lafayette	11-28-09	4	0-1	0-0	1-2	0-0-0	0	1	0	0	1
James Madison	12-01-09	7	0-0	0-0	0-0	0-0-0	0	1	0	0	0
Glenville St.	12-05-09	22	2-2	0-0	2-3	0-7-7	7	8	0	1	6
Auburn	12-15-09	10	1-1	0-0	0-0	0-2-2	0	0	0	1	2
Cornell	12-28-09	22	0-3	0-0	2-2	1-0-1	1	5	0	3	2
Virginia	12-29-09	12	1-2	0-0	0-0	1-0-1	0	3	0	0	2
Gardner-Webb	01-02-10	13	2-4	0-0	2-3	0-1-1	1	0	0	2	6
N.C. A&T	01-05-10	17	2-3	0-0	1-2	0-0-0	1	1	0	3	5
Winthrop	01-09-10	20	4-7	2-3	1-2	0-1-1	1	1	0	2	11
Longwood	01-12-10	15	2-6	0-1	2-2	0-3-3	3	2	0	1	6
Presbyterian	01-16-10	18	2-3	0-0	1-1	0-0-0	4	2	0	5	5
UNC Asheville	01-18-10	22	3-6	0-2	0-0	0-2-2	6	2	0	4	6
Charleston So.	01-23-10	13	0-2	0-1	2-3	0-1-1	0	3	0	0	2
Coastal Carolina	01-25-10	14	1-5	0-2	0-0	0-0-0	1	1	0	0	2
High Point	01-30-10	19	1-5	1-1	3-4	0-0-0	1	1	0	3	6
Radford	02-01-10	17	1-5	0-0	3-4	1-2-3	1	3	0	3	5
N.C. Central	02-04-10	12	0-3	0-2	0-0	1-0-1	1	1	0	0	0
Gardner-Webb	02-08-10	9	1-2	0-1	1-2	0-0-0	1	0	0	0	3
Winthrop	02-15-10	23	2-7	1-3	0-0	0-1-1	1	5	0	2	5
Coastal Carolina	02-20-10	14	1-2	0-0	1-2	0-1-1	1	1	0	0	3

2009-10 Notes/Highlights

Career Stats

Season	GP	GS	Min	Avg	FG	FGA	Pct	3FG	3FGA	Pct	FT	FTA	Pct	ORB	DRB	TOT	Avg	Asst	TO	Blk	Stl	Pts	Avg
2009-10	24	0	376	15.7	33	84	.393	5	18	.278	24	34	.706	7	32	39	1.6	34	52	0	34	95	4.0



30

Brittany Campbell
6-0 R-Freshman Guard
Rustburg, Va.
Brookville HS

Career Highs

Points - 11
vs. Hartford (11-28-08)
FG Made - 4
vs. Hartford (11-28-08)
FG Attempts - 12
at James Madison (12-02-08)
3FG Made - 3
at James Madison (12-02-08)
3FG Attempts - 7
at James Madison (12-02-08)
FT Made - 3
vs. South Alabama (11-29-08)
FT Attempts - 3 (Two times)
Most recently, vs. S. Alabama (11-29-08)
Rebounds - 3 (Three times)
Most recently, at JMU (12-02-08)
Assists - 1
vs. Hartford (11-28-08)
Steals - 2
vs. South Alabama (11-29-08)
Blocks - 1
vs. South Alabama (11-29-08)

2009-10 Game-By-Game Statistics

OPPONENT	DATE	MIN	FG-FGA	3FG-FGA	FT-FTA	OFF-DEF-TOT	A	TO	BLK	STL	PTS
Winston-Salem St.	11-13-09										Did not play
UNC Greensboro	11-17-09										Did not play
Tulane	11-20-09										Did not play
Navy	11-21-09										Did not play
Lafayette	11-28-09										Did not play
James Madison	12-01-09										Did not play
Glenville St.	12-05-09										Did not play
Auburn	12-15-09										Did not play
Cornell	12-28-09										Did not play
Virginia	12-29-09										Did not play
Gardner-Webb	01-02-10										Did not play
N.C. A&T	01-05-10										Did not play
Winthrop	01-09-10										Did not play
Longwood	01-12-10										Did not play
Presbyterian	01-16-10										Did not play
UNC Asheville	01-18-10										Did not play
Charleston So.	01-23-10										Did not play
Coastal Carolina	01-25-10										Did not play
High Point	01-30-10										Did not play
Radford	02-01-10										Did not play
N.C. Central	02-04-10										Did not play
Gardner-Webb	02-08-10										Did not play
Winthrop	02-15-10										Did not play
Coastal Carolina	02-20-10										Did not play

2009-10 Notes/Highlights

-- Has missed the first 24 games of the 2009-10 season, due to a knee injury.

Career Stats

Season	GP	GS	Min	Avg	FG	FGA	Pct	3FG	3FGA	Pct	FT	FTA	Pct	ORB	DRB	TOT	Avg	Asst	TO	Blk	Stl	Pts	Avg
2008-09	5	1	104	20.8	11	31	.355	6	18	.333	7	9	.778	5	6	11	2.2	1	6	1	4	35	7.0



32

Rachel McLeod
5-10 Junior Guard
Houston, Texas
Home Schooled

Season Highs

Points - 11

vs. Presbyterian (01-16-10)

FG Made - 4 (Two times)

Most recently, vs. G.-Webb (02-08-10)

FG Attempts - 8 (Two times)

Most recently, vs. NCCU (02-04-10)

3FG Made - 2

vs. UNC Asheville (01-18-10)

3FG Attempts - 3 (Three times)

Most recently, vs. UNCA (01-18-10)

FT Made - 5

at Radford (02-01-10)

FT Attempts - 6

at Radford (02-01-10)

Rebounds - 8

at Gardner-Webb (01-02-10)

Assists - 7

vs. Glenville State (12-05-09)

Steals - 4

vs. UNC Asheville (01-18-10)

Blocks - 1

vs. Longwood (01-12-10)

Career Highs

Points - 13

at Coastal Carolina (02-21-09)

FG Made - 4 (Six times)

Most recently, vs. G.-Webb (02-08-10)

FG Attempts - 13

at Old Dominion (03-23-08)

3FG Made - 2 (Four times)

Most recently, vs. UNCA (01-18-10)

3FG Attempts - 5

at Old Dominion (03-23-08)

FT Made - 5 (Two times)

Most recently, at Radford (02-01-10)

FT Attempts - 6 (Two times)

Most recently, at Radford (02-01-10)

Rebounds - 8 (Two times)

Most recently, at G.-Webb (01-02-10)

Assists - 8

vs. High Point (03-15-08)

Steals - 4 (Two times)

Most recently, vs. UNCA (01-18-10)

Blocks - 1 (Eight times)

Most recently, vs. Longwood (01-12-10)

2009-10 Game-By-Game Statistics

OPPONENT	DATE	MIN	FG-FGA	3FG-FGA	FT-FTA	OFF-DEF-TOT	A	TO	BLK	STL	PTS
Winston-Salem St.	11-13-09	25	3-5	0-1	2-2	1-0-1	2	0	0	2	8
UNC Greensboro	11-17-09	25	1-7	0-3	0-0	0-1-1	2	3	0	2	2
Tulane	11-20-09	23	3-4	0-0	3-5	0-2-2	2	2	0	0	9
Navy	11-21-09	18	3-4	0-0	0-2	1-1-2	0	1	0	0	6
Lafayette	11-28-09	18	1-4	0-0	2-2	0-1-1	0	1	0	1	4
James Madison	12-01-09	23	3-6	0-3	2-2	0-1-1	0	4	0	1	8
Glenville St.	12-05-09	18	2-6	0-0	2-4	1-1-2	7	2	0	2	6
Auburn	12-15-09	22	0-6	0-0	2-2	0-1-1	1	1	0	0	2
Cornell	12-28-09	17	1-2	1-1	0-0	0-0-0	0	2	0	0	3
Virginia	12-29-09	19	2-2	0-0	1-1	0-2-2	0	3	0	0	5
Gardner-Webb	01-02-10	32	2-4	0-0	2-2	2-6-8	2	4	0	0	6
N.C. A&T	01-05-10	25	1-8	0-0	2-2	2-0-2	1	0	0	1	4
Winthrop	01-09-10	20	2-3	0-0	0-0	1-2-3	2	0	0	1	4
Longwood	01-12-10	27	2-6	0-0	1-2	0-2-2	4	2	1	0	5
Presbyterian	01-16-10	20	4-6	1-1	2-2	1-2-3	1	0	0	2	11
UNC Asheville	01-18-10	23	3-7	2-3	2-2	1-4-5	3	0	0	4	10
Charleston So.	01-23-10	29	0-3	0-0	3-4	1-1-2	1	1	0	0	3
Coastal Carolina	01-25-10	30	1-5	0-0	0-0	2-1-3	2	2	0	1	2
High Point	01-30-10	32	0-3	0-1	2-2	1-0-1	2	3	0	0	2
Radford	02-01-10	21	2-4	0-0	5-6	0-1-1	2	1	0	1	9
N.C. Central	02-04-10	30	3-8	0-0	0-0	2-2-4	1	1	0	0	6
Gardner-Webb	02-08-10	33	4-7	1-2	0-0	2-0-2	3	2	0	2	9
Winthrop	02-15-10	28	1-4	0-2	1-2	2-2-4	1	1	0	3	3
Coastal Carolina	02-20-10	24	0-2	0-0	0-0	0-2-2	3	1	0	0	0

2009-10 Notes/Highlights

-- Scored in double figures in back-to-back games for the first time in her career, Jan. 16 vs. Presbyterian and Jan. 18 vs. UNC Asheville.

Career Stats

Season	GP	GS	Min	Avg	FG	FGA	Pct	3FG	3FGA	Pct	FT	FTA	Pct	ORB	DRB	TOT	Avg	Asst	TO	Blk	Stl	Pts	Avg
2007-08	32	0	531	16.6	50	108	.463	12	33	.364	27	41	.659	10	46	56	1.8	66	60	4	25	139	4.3
2008-09	30	5	622	20.7	39	120	.325	9	34	.265	34	45	.756	11	60	71	2.4	73	82	3	29	121	4.0
2009-10	24	24	582	24.3	44	116	.379	5	17	.294	34	44	.773	20	35	55	2.3	42	37	1	23	127	5.3
TOTAL	86	29	1735	20.2	133	344	.387	26	84	.310	95	130	.731	41	141	182	2.1	181	179	8	77	387	4.5



40

Devon Brown

5-10 R-Freshman G
Waynesboro, Va.
Waynesboro HS

Season/Career Highs

Points - 29

at High Point (01-30-10)

FG Made - 12

at High Point (01-30-10)

FG Attempts - 18

vs. Gardner-Webb (02-08-10)

3FG Made - 3 (Four times)

Most recently, vs. Presby. (01-16-10)

3FG Attempts - 6 (Two times)

Most recently, vs. Winthrop (01-09-10)

FT Made - 8 (Two times)

Most recently, at Radford (02-01-10)

FT Attempts - 9 (Two times)

Most recently, at Radford (02-01-10)

Rebounds - 13 (Four times)

Most recently, vs. G.-Webb (02-08-10)

Assists - 4 (Two times)

Most recently, at CSU (01-23-10)

Steals - 5 (Two times)

Most recently, vs. Coastal (02-20-10)

Blocks - 2 (Four times)

Most recently, at High Point (01-30-10)

2009-10 Game-By-Game Statistics

OPPONENT	DATE	MIN	FG-FGA	3FG-FGA	FT-FTA	OFF-DEF-TOT	A	TO	BLK	STL	PTS
Winston-Salem St.	11-13-09	22	11-14	3-5	1-1	4-3-7	1	2	0	0	26
UNC Greensboro	11-17-09	30	11-15	1-2	3-7	4-5-9	2	3	0	3	26
Tulane	11-20-09	32	6-13	3-4	3-6	3-9-12	1	2	2	1	18
Navy	11-21-09	33	4-13	3-5	8-9	3-8-11	2	1	0	5	19
Lafayette	11-28-09	20	8-14	1-3	0-0	2-1-3	4	2	0	1	17
James Madison	12-01-09	34	1-16	0-3	7-8	4-9-13	0	6	0	1	9
Glenville St.	12-05-09	18	8-11	0-1	4-6	2-7-9	2	1	0	0	20
Auburn	12-15-09	37	7-9	2-3	3-3	0-8-8	0	3	1	0	19
Cornell	12-28-09	23	8-14	1-3	1-3	1-5-6	1	2	1	2	18
Virginia	12-29-09	25	4-13	1-6	0-0	1-5-6	0	4	2	3	9
Gardner-Webb	01-02-10	31	2-11	1-4	4-4	3-8-11	0	2	0	3	9
N.C. A&T	01-05-10	32	6-15	1-5	4-7	4-9-13	3	3	1	2	17
Winthrop	01-09-10	23	8-16	2-6	3-3	1-5-6	1	1	0	2	21
Longwood	01-12-10	30	5-17	0-4	6-6	6-7-13	3	4	2	3	16
Presbyterian	01-16-10	21	5-8	3-5	0-0	1-4-5	3	1	1	2	13
UNC Asheville	01-18-10	25	5-10	2-4	0-0	2-6-8	2	4	1	0	12
Charleston So.	01-23-10	32	4-7	1-3	2-5	2-4-6	4	4	0	3	11
Coastal Carolina	01-25-10	29	6-16	1-3	4-4	2-8-10	1	1	1	4	17
High Point	01-30-10	39	12-17	0-3	5-8	1-10-11	2	4	2	1	29
Radford	02-01-10	32	6-12	0-3	8-9	3-8-11	1	2	0	3	20
N.C. Central	02-04-10	27	4-6	2-4	0-0	2-4-6	0	1	0	0	10
Gardner-Webb	02-08-10	37	5-18	1-4	2-2	4-9-13	1	3	0	2	13
Winthrop	02-15-10	20	7-16	1-5	0-0	3-2-5	2	2	0	1	15
Coastal Carolina	02-20-10	31	6-14	0-2	2-5	3-3-6	1	2	0	5	14

2009-10 Notes/Highlights

-- Earned her second Big South Player of the Week award this season on Feb. 2, after posting 24.5 ppg and 11.0 rpg during Liberty's wins at High Point and Radford. Brown is one of two Big South players (GWU's Margaret Roundtree) to win the award multiple times this season.

-- Previously named Big South Player of the Week on Nov. 24, becoming the first Liberty freshman to capture the award since Megan Frazee (twice in 2005-06).

-- Ranks in the top 10 of seven different Big South statistical categories, including scoring (1st-16.7 ppg), defensive rebounds (1st-6.3 rpg), rebounding (2nd-8.8 rpg), field goal percentage (4th-.475), offensive rebounds (5th-2.5 rpg), free throw percentage (6th-.747) and steals (10th-1.8 spg). (*Through games of 2/16*)

-- Her 26 points versus Winston-Salem State (Nov. 13) equaled the Lady Rams' point total and were the most points by a Lady Flame in her collegiate debut since Elena Kisseleva scored 30 points versus Bluefield on Nov. 23, 1996.

-- Outscored Navy during the second half of the Navy Classic championship game (Nov. 21), 14-11. She was named the Championship Game All-Star, after tallying 19 points, 11 rebounds and a career-high five steals.

-- Posted 19 points and eight rebounds during the second half at High Point (Jan. 30), nearly matching the Panthers' second-half statistics (21 points, eight rebounds) by herself.

-- Has posted eight double-doubles this season (Nov. 20 vs. Tulane, Nov. 21 at Navy, Jan. 5 vs. North Carolina A&T, Jan. 12 vs. Longwood, Jan. 25 at Coastal Carolina, Jan. 30 at High Point, Feb. 1 at Radford and Feb. 8 vs. Gardner-Webb).

-- Has scored in double figures in 13 consecutive games.

Career Stats

Season	GP	GS	Min	Avg	FG	FGA	Pct	3FG	3FGA	Pct	FT	FTA	Pct	ORB	DRB	TOT	Avg	Asst	TO	Blk	Stl	Pts	Avg
2009-10	24	24	683	28.5	149	315	.473	30	90	.333	70	96	.729	61	147	208	8.7	37	60	14	47	398	16.6



43

Kittery Maine

6-4 Junior Forward

Bonaire, Ga.

Warner Robins HS

Career Highs

Points - 12

vs. Saint Paul's (12-13-08)

FG Made - 5

vs. Saint Paul's (12-13-08)

FG Attempts - 8

vs. Saint Paul's (12-13-08)

3FG Made - 0

None

3FG Attempts - 0

None

FT Made - 3

vs. Charleston So. (02-18-08)

FT Attempts - 4

vs. Charleston So. (02-18-08)

Rebounds - 7

vs. Saint Paul's (12-13-08)

Assists - 1 (Six times)

Most recently, vs. Radford (02-02-09)

Steals - 1 (Five times)

Most recently, vs. Winthrop (02-16-09)

Blocks - 3 (Two times)

Most recently, at W. Carolina (11-22-08)

2009-10 Game-By-Game Statistics

OPPONENT	DATE	MIN	FG-FGA	3FG-FGA	FT-FTA	OFF-DEF-TOT	A	TO	BLK	STL	PTS
Winston-Salem St.	11-13-09										Did not play
UNC Greensboro	11-17-09										Did not play
Tulane	11-20-09										Did not play
Navy	11-21-09										Did not play
Lafayette	11-28-09										Did not play
James Madison	12-01-09										Did not play
Glenville St.	12-05-09										Did not play
Auburn	12-15-09										Did not play
Cornell	12-28-09										Did not play
Virginia	12-29-09										Did not play
Gardner-Webb	01-02-10										Did not play
N.C. A&T	01-05-10										Did not play
Winthrop	01-09-10										Did not play
Longwood	01-12-10										Did not play
Presbyterian	01-16-10										Did not play
UNC Asheville	01-18-10										Did not play
Charleston So.	01-23-10										Did not play
Coastal Carolina	01-25-10										Did not play
High Point	01-30-10										Did not play
Radford	02-01-10										Did not play
N.C. Central	02-04-10										Did not play
Gardner-Webb	02-08-10										Did not play
Winthrop	02-15-10										Did not play
Coastal Carolina	02-20-10										Did not play

2009-10 Notes/Highlights

-- Has missed the first 24 games of the 2009-10 season, due to a knee injury.

Career Stats

Season	GP	GS	Min	Avg	FG	FGA	Pct	3FG	3FGA	Pct	FT	FTA	Pct	ORB	DRB	TOT	Avg	Asst	TO	Blk	Stl	Pts	Avg
2007-08	28	0	202	7.2	22	30	.733	0	0	.000	10	18	.556	13	28	41	1.5	3	18	6	3	54	1.9
2008-09	24	0	197	8.2	20	41	.488	0	0	.000	2	4	.500	17	30	47	2.0	3	12	7	2	42	1.8
TOTAL	52	0	399	7.7	42	71	.592	0	0	.000	12	22	.545	30	58	88	1.7	6	30	13	5	96	1.8



54

Carra Coy

*6-6 Freshman Forward
Summerville, S.C.
Northwood Academy*

Season/Career Highs

Points - 3 (Three times)

Most recently, vs. Coastal (02-20-10)

FG Made - 1 (Eight times)

Most recently, vs. Coastal (02-20-10)

FG Attempts - 4 (Two times)

at Winthrop (02-15-10)

3FG Made - 0

None

3FG Attempts - 0

None

FT Made - 2

vs. Glensville State (12-05-09)

FT Attempts - 2 (Five times)

Most recently, vs. Coastal (02-20-10)

Rebounds - 4 (Three times)

Most recently, at Winthrop (02-15-10)

Assists - 1

vs. Coastal (02-20-10)

Steals - 1 (Two times)

Most recently, vs. NCCU (02-04-10)

Blocks - 2

vs. UNC Greensboro (11-17-09)

2009-10 Game-By-Game Statistics

OPPONENT	DATE	MIN	FG-FGA	3FG-FGA	FT-FTA	OFF-DEF-TOT	A	TO	BLK	STL	PTS
Winston-Salem St.	11-13-09	19	1-3	0-0	1-2	0-1-1	0	2	1	0	3
UNC Greensboro	11-17-09	14	1-2	0-0	0-0	1-3-4	0	0	2	0	2
Tulane	11-20-09					Did not play					
Navy	11-21-09					Did not play					
Lafayette	11-28-09	17	1-1	0-0	0-0	0-1-1	0	1	0	1	2
James Madison	12-01-09	7	0-0	0-0	0-0	1-0-1	0	1	0	0	0
Glensville St.	12-05-09	15	0-1	0-0	2-2	1-3-4	0	3	1	0	2
Auburn	12-15-09					Did not play					
Cornell	12-28-09	15	1-2	0-0	1-2	0-2-2	0	1	1	0	3
Virginia	12-29-09					Did not play					
Gardner-Webb	01-02-10	5	0-0	0-0	0-0	0-1-1	0	1	0	0	0
N.C. A&T	01-05-10	4	1-1	0-0	0-0	0-0-0	0	0	0	0	2
Winthrop	01-09-10	9	0-4	0-0	0-0	2-1-3	0	0	1	0	0
Longwood	01-12-10	5	0-0	0-0	0-1	1-0-1	0	0	0	0	0
Presbyterian	01-16-10	15	0-1	0-0	0-1	1-1-2	0	1	1	0	0
UNC Asheville	01-18-10	10	1-1	0-0	0-0	1-0-1	0	1	1	0	2
Charleston So.	01-23-10	4	0-0	0-0	0-0	0-1-1	0	1	0	0	0
Coastal Carolina	01-25-10					Did not play					
High Point	01-30-10	1	0-0	0-0	0-0	0-0-0	0	0	0	0	0
Radford	02-01-10	6	0-0	0-0	0-2	1-0-1	0	0	0	0	0
N.C. Central	02-04-10	6	0-1	0-0	0-0	0-0-0	0	0	0	1	0
Gardner-Webb	02-08-10					Did not play					
Winthrop	02-15-10	14	1-4	0-0	0-0	3-1-4	0	0	0	0	2
Coastal Carolina	02-20-10	8	1-1	0-0	1-2	3-0-3	1	1	0	0	3

2009-10 Notes/Highlights

Career Stats

Season	GP	GS	Min	Avg	FG	FGA	Pct	3FG	3FGA	Pct	FT	FTA	Pct	ORB	DRB	TOT	Avg	Asst	TO	Blk	Stl	Pts	Avg
2009-10	18	0	174	9.7	8	22	.364	0	0	.000	5	12	.417	15	15	30	1.7	1	13	8	2	21	1.2

Official Basketball Box Score -- Game Totals -- Final Statistics

Coastal Carolina vs Liberty

02-20-10 4:05 p.m. at Lynchburg, Va. (Vines Center)

VISITORS: Coastal Carolina 14-10, 5-7 BSC

##	Player Name	TOT-FG			3-PT			REBOUNDS			PF	TP	A	TO	BLK	S	MIN
		FG	FGA	FGA	FGA	FT	FTA	OF	DE	TOT							
22	RIVERS, Devin.....	f	1-3	0-0	1-2	3	1	4	2	3	2	1	0	2	33		
40	REYNOLDS, Kendra....	f	2-6	0-0	0-0	1	2	3	3	4	1	2	0	0	28		
03	AHAUS, Katie.....	g	2-4	1-2	0-0	0	0	0	1	5	4	4	0	0	26		
12	STULL, Amanda.....	g	5-8	5-8	4-4	1	2	3	2	19	1	2	0	2	38		
21	MOSS, Sydnei.....	g	7-15	2-5	3-6	2	3	5	1	19	2	4	0	2	33		
15	IRICK, Olivia.....		0-0	0-0	0-0	0	1	1	1	0	1	3	0	0	9		
24	WHITE, Katie.....		1-2	0-0	0-1	0	1	1	2	2	1	0	0	0	21		
30	GRAMBLEY, Courtney..		0-1	0-1	0-0	0	1	1	0	0	0	1	0	0	6		
45	WEAVER, Elizabeth...		1-3	1-2	0-0	0	0	0	2	3	0	1	0	0	6		
	TEAM.....					3	5	8				1					
	Totals.....		19-42	9-18	8-13	10	16	26	14	55	13	20	0	6	200		

TOTAL FG% 1st Half: 10-21 47.6% 2nd Half: 9-21 42.9% Game: 45.2% DEADB
 3-Pt. FG% 1st Half: 5-8 62.5% 2nd Half: 4-10 40.0% Game: 50.0% REBS
 F Throw % 1st Half: 4-9 44.4% 2nd Half: 4-4 100 % Game: 61.5% 3

HOME TEAM: Liberty 19-5, 9-2 BSC

##	Player Name	TOT-FG			3-PT			REBOUNDS			PF	TP	A	TO	BLK	S	MIN
		FG	FGA	FGA	FGA	FT	FTA	OF	DE	TOT							
15	BEECHER, Kylee.....	f	4-7	0-1	1-1	1	0	1	2	9	0	2	0	1	25		
23	WARLEY, Avery.....	f	2-6	0-0	1-2	4	4	8	2	5	1	4	1	3	20		
21	MAYS, Amber.....	g	6-10	0-0	0-0	1	2	3	2	12	2	1	0	1	34		
32	McLEOD, Rachel.....	g	0-2	0-0	0-0	0	2	2	2	0	3	1	0	0	24		
40	BROWN, Devon.....	g	6-14	0-2	2-5	3	3	6	2	14	1	2	0	5	31		
01	WASHINGTON, LaKendra		2-3	0-1	0-0	0	1	1	2	4	0	0	0	0	12		
11	ANTIC, Jelena.....		0-2	0-1	2-4	1	2	3	0	2	1	2	0	2	20		
12	DALE, Danika.....		1-1	0-0	3-4	0	0	0	1	5	0	0	0	0	12		
25	MORGAN, Dymond.....		1-2	0-0	1-2	0	1	1	3	3	1	1	0	0	14		
54	COY, Carra.....		1-1	0-0	1-2	3	0	3	0	3	1	1	0	0	8		
	TEAM.....																
	Totals.....		23-48	0-5	11-20	13	15	28	16	57	10	14	1	12	200		

TOTAL FG% 1st Half: 13-21 61.9% 2nd Half: 10-27 37.0% Game: 47.9% DEADB
 3-Pt. FG% 1st Half: 0-1 0.0% 2nd Half: 0-4 0.0% Game: 0.0% REBS
 F Throw % 1st Half: 7-10 70.0% 2nd Half: 4-10 40.0% Game: 55.0% 5

Officials: Jennifer Rezac (R), Brad McMillion, Clark Bennett

Technical fouls: Coastal Carolina-None. Liberty-None.

Attendance: 3387

Score by Periods	1st	2nd	Total
Coastal Carolina.....	29	26	55
Liberty.....	33	24	57

Points in the paint-COASTAL 12,LIBERTY 44. Points off turnovers-COASTAL 19,LIBERTY 16.

2nd chance points-COASTAL 5,LIBERTY 5. Fast break points-COASTAL 2,LIBERTY 14.

Bench points-COASTAL 5,LIBERTY 17. Score tied-2 times. Lead changed-2 times.

Last FG-COASTAL 2nd-01:26, LIBERTY 2nd-00:59.

Largest lead-COASTAL by 4 1st-13:23, LIBERTY by 12 2nd-07:52.

Official Basketball Box Score -- Game Totals -- Final Statistics

Liberty vs Charleston Southern

01-23-10 5:00 p.m. at Charleston, S.C.

VISITORS: Liberty 13-4, 4-1 BSC

##	Player Name	FG-FGA	3-PT FG-FGA	FT-FTA	REBOUNDS			PF	TP	A	TO	BLK	S	MIN
					OF	DE	TOT							
15	BEECHER, Kylee.....	f 4-9	0-0	2-2	4	5	9	1	10	0	2	0	2	33
23	WARLEY, Avery.....	f 8-12	0-0	2-4	5	11	16	4	18	0	2	0	0	30
21	MAYS, Amber.....	g 6-9	0-0	2-5	0	0	0	4	14	3	1	1	1	27
32	McLEOD, Rachel.....	g 0-3	0-0	3-4	1	1	2	2	3	1	1	0	0	29
40	BROWN, Devon.....	g 4-7	1-3	2-5	2	4	6	2	11	4	4	0	3	32
01	WASHINGTON, LaKendra	2-3	0-1	0-0	0	1	1	0	4	0	0	0	1	13
12	DALE, Danika.....	1-4	0-1	1-2	2	2	4	0	3	2	3	0	1	19
25	MORGAN, Dymond.....	0-2	0-1	2-3	0	1	1	3	2	0	3	0	0	13
54	COY, Carra.....	0-0	0-0	0-0	0	1	1	1	0	0	1	0	0	4
	TEAM.....				1	3	4							
	Totals.....	25-49	1-6	14-25	15	29	44	17	65	10	17	1	8	200

TOTAL FG% 1st Half: 15-30 50.0% 2nd Half: 10-19 52.6% Game: 51.0% DEADB
 3-Pt. FG% 1st Half: 1-3 33.3% 2nd Half: 0-3 0.0% Game: 16.7% REBS
 F Throw % 1st Half: 6-13 46.2% 2nd Half: 8-12 66.7% Game: 56.0% 3

HOME TEAM: Charleston Southern 9-9, 1-4 BSC

##	Player Name	FG-FGA	3-PT FG-FGA	FT-FTA	REBOUNDS			PF	TP	A	TO	BLK	S	MIN
					OF	DE	TOT							
33	SCHWAGMEYER, Ali.....	f 1-5	0-1	4-4	0	1	1	3	6	2	2	0	1	25
44	RUSH, LeChell.....	f 1-4	0-1	2-2	2	4	6	4	4	0	1	0	0	28
22	WASMER, Kelsey.....	g 2-7	2-6	2-2	3	2	5	2	8	3	1	0	0	34
25	TULL, Katie.....	g 4-13	3-10	0-0	1	1	2	2	11	2	2	1	0	37
32	JONES, Shay.....	g 1-7	1-5	2-2	2	1	3	4	5	3	3	0	2	24
12	TERRY, Helen.....	3-7	2-5	6-8	1	3	4	4	14	0	5	0	0	17
15	PENICK, Kori.....	0-0	0-0	0-0	0	0	0	1	0	0	0	0	0	4
24	ALSTON, Lakeitha....	1-4	0-2	2-4	0	3	3	3	4	0	1	1	3	22
45	DECARVALHO, Tina....	0-0	0-0	0-0	0	0	0	0	0	0	0	0	0	9
	TEAM.....				2	2								
	Totals.....	13-47	8-30	18-22	9	17	26	23	52	10	15	2	6	200

TOTAL FG% 1st Half: 6-23 26.1% 2nd Half: 7-24 29.2% Game: 27.7% DEADB
 3-Pt. FG% 1st Half: 3-15 20.0% 2nd Half: 5-15 33.3% Game: 26.7% REBS
 F Throw % 1st Half: 9-10 90.0% 2nd Half: 9-12 75.0% Game: 81.8% 1

Officials: Bonnie Pettus, David Pitock, Libya Rentz
 Technical fouls: Liberty-None. Charleston Southern-None.
 Attendance: 881

Score by Periods	1st	2nd	Total
Liberty.....	37	28	- 65
Charleston Southern.....	24	28	- 52

Points in the paint-LIBERTY 48,CSU 6. Points off turnovers-LIBERTY 13,CSU 19.
 2nd chance points-LIBERTY 16,CSU 7. Fast break points-LIBERTY 2,CSU 0.
 Bench points-LIBERTY 9,CSU 18. Score tied-0 times. Lead changed-0 times.
 Last FG-LIBERTY 2nd-03:27, CSU 2nd-02:57.
 Largest lead-LIBERTY by 18 2nd-03:27, CSU None.

2009-10 Liberty Women's Basketball
 Liberty Game-by-Game Highs (as of Feb 21, 2010)
 All games

Opponent	Date	Score	WL	POINTS	REBOUNDS	ASSISTS	STEALS	BLOCKED SHOTS
WINSTON-SALEM STATE	11-13-09	71-26	W	26-BROWN, Devon	9-WARLEY, Avery	6-MAYS, Amber	5-WASHINGTON, L	2-DALE, Danika
UNC GREENSBORO	11-17-09	60-42	W	26-BROWN, Devon	9-BROWN, Devon	4-MAYS, Amber	4-MAYS, Amber	2-COY, Carra DALE, Danika
vs Tulane	11-20-09	63-52	W	18-BROWN, Devon	12-BROWN, Devon	3-MAYS, Amber	4-MAYS, Amber	2-BROWN, Devon
at Navy	11-21-09	55-43	W	19-BROWN, Devon	11-BROWN, Devon	5-MAYS, Amber	5-BROWN, Devon	None
at Lafayette	11-28-09	90-55	W	21-WASHINGTON, L	11-WARLEY, Avery	4-BROWN, Devon MAYS, Amber	4-WASHINGTON, L MAYS, Amber	1-BEECHER, Kyle
JAMES MADISON	12-01-09	50-60	L	14-MAYS, Amber	13-BROWN, Devon	2-MAYS, Amber WARLEY, Avery	2-BEECHER, Kyle	2-DALE, Danika
GLENVILLE STATE	12-05-09	86-45	W	20-BROWN, Devon	10-ANTIC, Jelena	7-McLEOD, Rache MORGAN, Dymon	3-DALE, Danika	1-WARLEY, Avery COY, Carra
at Auburn	12-15-09	64-70	L	19-BROWN, Devon	8-BROWN, Devon	3-MAYS, Amber	4-MAYS, Amber	1-BROWN, Devon
vs Cornell	12-28-09	70-40	W	18-BROWN, Devon	8-ANTIC, Jelena	8-MAYS, Amber	4-MAYS, Amber	1-COY, Carra WARLEY, Avery BROWN, Devon WASHINGTON, L
at Virginia	12-29-09	54-63	L	12-WARLEY, Avery	8-WARLEY, Avery	3-ANTIC, Jelena MAYS, Amber	3-BROWN, Devon MAYS, Amber	2-BROWN, Devon
at Gardner-Webb	01-02-10	65-70	L	10-DALE, Danika ANTIC, Jelena MAYS, Amber WARLEY, Avery	11-BROWN, Devon	6-MAYS, Amber	3-BROWN, Devon WARLEY, Avery	1-WARLEY, Avery
NORTH CAROLINA A&T	01-05-10	57-51	W	17-BROWN, Devon	13-BROWN, Devon	4-ANTIC, Jelena	3-MORGAN, Dymon	1-BEECHER, Kyle BROWN, Devon ANTIC, Jelena
WINTHROP	01-09-10	67-38	W	21-BROWN, Devon	6-BROWN, Devon ANTIC, Jelena	10-MAYS, Amber	3-WASHINGTON, L	1-WARLEY, Avery BEECHER, Kyle COY, Carra
LONGWOOD	01-12-10	78-55	W	19-ANTIC, Jelena	13-BROWN, Devon	4-McLEOD, Rache	5-MAYS, Amber	2-BROWN, Devon
PRESBYTERIAN COLLEGE	01-16-10	73-27	W	14-ANTIC, Jelena	5-BROWN, Devon DALE, Danika	6-MAYS, Amber	5-MORGAN, Dymon	1-BROWN, Devon COY, Carra
UNC ASHEVILLE	01-18-10	82-40	W	14-BEECHER, Kyle MAYS, Amber	10-WARLEY, Avery	6-MORGAN, Dymon	4-WASHINGTON, L McLEOD, Rache MORGAN, Dymon	3-WARLEY, Avery
at Charleston Southern	01-23-10	65-52	W	18-WARLEY, Avery	16-WARLEY, Avery	4-BROWN, Devon	3-BROWN, Devon	1-MAYS, Amber
at Coastal Carolina	01-25-10	57-38	W	17-BROWN, Devon	12-WARLEY, Avery	2-McLEOD, Rache MAYS, Amber DALE, Danika	4-BROWN, Devon	1-WARLEY, Avery BROWN, Devon DALE, Danika
at High Point	01-30-10	75-62	W	29-BROWN, Devon	14-WARLEY, Avery	2-MAYS, Amber BEECHER, Kyle McLEOD, Rache BROWN, Devon	3-MORGAN, Dymon	2-BROWN, Devon
at Radford	02-01-10	63-45	W	20-BROWN, Devon	11-BROWN, Devon	7-MAYS, Amber	3-BROWN, Devon MAYS, Amber BEECHER, Kyle MORGAN, Dymon	2-WARLEY, Avery DALE, Danika
N.C. CENTRAL	02-04-10	64-44	W	16-WARLEY, Avery	11-WARLEY, Avery	8-MAYS, Amber	3-WASHINGTON, L	1-WASHINGTON, L WARLEY, Avery DALE, Danika
GARDNER-WEBB	02-08-10	56-59	L	15-WARLEY, Avery	13-BROWN, Devon	3-MAYS, Amber McLEOD, Rache	2-McLEOD, Rache BROWN, Devon MAYS, Amber	2-WARLEY, Avery
at Winthrop	02-15-10	52-18	W	15-BROWN, Devon	8-WARLEY, Avery	2-BROWN, Devon	3-WASHINGTON, L	3-WARLEY, Avery

2009-10 Liberty Women's Basketball
 Liberty Game-by-Game Highs (as of Feb 21, 2010)
 All games

Opponent	Date	Score	WL	POINTS	REBOUNDS	ASSISTS	STEALS	BLOCKED SHOTS
							McLEOD, Rache	
COASTAL CAROLINA	02-20-10	57-55	W	14-BROWN, Devon	8-WARLEY, Avery	3-McLEOD, Rache	5-BROWN, Devon	1-WARLEY, Avery

2009-10 Liberty Women's Basketball
Liberty Game-by-Game Points-Rebounds-Assists (as of Feb 21, 2010)
All games

Opponent	Date	Score	WL	01	11	12	15	21	23	25	32	40
				WASHINGTON	ANTIC,JEL	DALE,DANI	BEECHER,K	MAYS,AMBE	WARLEY,AV	MORGAN,DY	MCLEOD,RA	BROWN,DEV
WINSTON-SALEM STATE	11-13-09	71-26	W	9- 2- 1	DNP	6- 7- 3	8- 2- 2	7- 0- 6	4- 9- 2	0- 4- 1	8- 1- 2	26- 7- 1
UNC GREENSBORO	11-17-09	60-42	W	2- 0- 0	DNP	0- 4- 0	11- 5- 0	11- 1- 4	0- 7- 0	6- 5- 2	2- 1- 2	26- 9- 2
vs Tulane	11-20-09	63-52	W	2- 1- 0	DNP	0- 1- 1	6- 3- 2	10- 2- 3	9-11- 1	9- 2- 0	9- 2- 2	18-12- 1
at Navy	11-21-09	55-43	W	6- 4- 0	0- 5- 3	0- 2- 1	4- 2- 0	8- 2- 5	10- 6- 0	2- 3- 0	6- 2- 0	19-11- 2
at Lafayette	11-28-09	90-55	W	21- 0- 2	4- 4- 2	6- 4- 1	5- 3- 2	11- 4- 4	19-11- 0	1- 0- 0	4- 1- 0	17- 3- 4
JAMES MADISON	12-01-09	50-60	L	2- 1- 0	1- 4- 0	3- 5- 1	4- 6- 1	14- 2- 2	9- 7- 2	0- 0- 0	8- 1- 0	9-13- 0
GLENVILLE STATE	12-05-09	86-45	W	8- 5- 2	12-10- 0	6- 9- 3	14- 6- 0	5- 2- 4	7- 6- 0	6- 7- 7	6- 2- 7	20- 9- 2
at Auburn	12-15-09	64-70	L	2- 1- 0	4- 3- 1	0- 0- 0	7- 0- 1	18- 1- 3	10- 6- 0	2- 2- 0	2- 1- 1	19- 8- 0
vs Cornell	12-28-09	70-40	W	9- 5- 2	11- 8- 2	5- 7- 2	5- 3- 0	4- 2- 8	10- 7- 0	2- 1- 1	3- 0- 0	18- 6- 1
at Virginia	12-29-09	54-63	L	5- 5- 1	5- 3- 3	3- 4- 0	6- 2- 0	7- 0- 3	12- 8- 0	2- 1- 0	5- 2- 0	9- 6- 0
at Gardner-Webb	01-02-10	65-70	L	0- 0- 0	10- 5- 1	10- 0- 1	4- 3- 0	10- 5- 6	10- 6- 0	6- 1- 1	6- 8- 2	9-11- 0
NORTH CAROLINA A&T	01-05-10	57-51	W	0- 2- 0	14- 4- 4	2- 2- 1	0- 3- 0	4- 2- 3	9-11- 0	5- 0- 1	4- 2- 1	17-13- 3
WINTHROP	01-09-10	67-38	W	5- 1- 1	9- 6- 1	4- 5- 3	5- 2- 2	3- 0-10	5- 5- 1	11- 1- 1	4- 3- 2	21- 6- 1
LONGWOOD	01-12-10	78-55	W	1- 2- 1	19-10- 2	2- 4- 1	10- 6- 1	7- 0- 3	12- 5- 1	6- 3- 3	5- 2- 4	16-13- 3
PRESBYTERIAN COLLEGE	01-16-10	73-27	W	6- 3- 0	14- 3- 1	5- 5- 1	5- 3- 1	8- 2- 6	6- 2- 0	5- 0- 4	11- 3- 1	13- 5- 3
UNC ASHEVILLE	01-18-10	82-40	W	6- 1- 0	7- 4- 0	5- 3- 1	14- 5- 2	14- 1- 5	6-10- 2	6- 2- 6	10- 5- 3	12- 8- 2
at Charleston Southern	01-23-10	65-52	W	4- 1- 0	DNP	3- 4- 2	10- 9- 0	14- 0- 3	18-16- 0	2- 1- 0	3- 2- 1	11- 6- 4
at Coastal Carolina	01-25-10	57-38	W	7- 1- 0	DNP	0- 4- 2	6- 9- 1	8- 2- 2	15-12- 0	2- 0- 1	2- 3- 2	17-10- 1
at High Point	01-30-10	75-62	W	0- 0- 0	DNP	2- 2- 0	3- 4- 2	7- 5- 2	26-14- 0	6- 0- 1	2- 1- 2	29-11- 2
at Radford	02-01-10	63-45	W	0- 0- 1	DNP	2- 1- 0	13- 9- 0	10- 1- 7	4- 5- 0	5- 3- 1	9- 1- 2	20-11- 1
N.C. CENTRAL	02-04-10	64-44	W	6- 2- 2	DNP	15- 3- 2	3- 2- 4	8- 2- 8	16-11- 0	0- 1- 1	6- 4- 1	10- 6- 0
GARDNER-WEBB	02-08-10	56-59	L	0- 0- 1	DNP	6- 0- 0	4- 4- 2	6- 1- 3	15-10- 0	3- 0- 1	9- 2- 3	13-13- 1
at Winthrop	02-15-10	52-18	W	2- 2- 1	DNP	11- 5- 0	9- 5- 1	1- 1- 1	4- 8- 1	5- 1- 1	3- 4- 1	15- 5- 2
COASTAL CAROLINA	02-20-10	57-55	W	4- 1- 0	2- 3- 1	5- 0- 0	9- 1- 0	12- 3- 2	5- 8- 1	3- 1- 1	0- 2- 3	14- 6- 1

54

Opponent	Date	Score	WL	COY,CARRA
WINSTON-SALEM STATE	11-13-09	71-26	W	3- 1- 0
UNC GREENSBORO	11-17-09	60-42	W	2- 4- 0
vs Tulane	11-20-09	63-52	W	DNP
at Navy	11-21-09	55-43	W	DNP
at Lafayette	11-28-09	90-55	W	2- 1- 0
JAMES MADISON	12-01-09	50-60	L	0- 1- 0
GLENVILLE STATE	12-05-09	86-45	W	2- 4- 0
at Auburn	12-15-09	64-70	L	DNP
vs Cornell	12-28-09	70-40	W	3- 2- 0
at Virginia	12-29-09	54-63	L	DNP
at Gardner-Webb	01-02-10	65-70	L	0- 1- 0
NORTH CAROLINA A&T	01-05-10	57-51	W	2- 0- 0
WINTHROP	01-09-10	67-38	W	0- 3- 0
LONGWOOD	01-12-10	78-55	W	0- 1- 0
PRESBYTERIAN COLLEGE	01-16-10	73-27	W	0- 2- 0
UNC ASHEVILLE	01-18-10	82-40	W	2- 1- 0
at Charleston Southern	01-23-10	65-52	W	0- 1- 0
at Coastal Carolina	01-25-10	57-38	W	DNP
at High Point	01-30-10	75-62	W	0- 0- 0
at Radford	02-01-10	63-45	W	0- 1- 0
N.C. CENTRAL	02-04-10	64-44	W	0- 0- 0
GARDNER-WEBB	02-08-10	56-59	L	DNP
at Winthrop	02-15-10	52-18	W	2- 4- 0
COASTAL CAROLINA	02-20-10	57-55	W	3- 3- 1

2009-10 Liberty Women's Basketball
 Liberty Player High/Low Analysis (as of Feb 21, 2010)
 All games

Liberty - INDIVIDUAL GAME HIGHS

Points.....	29	BROWN, Devon at High Point (01-30-10)
	26	WARLEY, Avery at High Point (01-30-10)
	26	BROWN, Devon vs UNC Greensboro (11-17-09)
	26	BROWN, Devon vs Winston-Salem State (11-13-09)
	21	BROWN, Devon vs Winthrop (01-09-10)
	21	WASHINGTON, LaKendra at Lafayette (11-28-09)
Field Goals Made.....	12	BROWN, Devon at High Point (01-30-10)
	11	BROWN, Devon vs UNC Greensboro (11-17-09)
	11	BROWN, Devon vs Winston-Salem State (11-13-09)
Field Goal Att.....	18	BROWN, Devon vs Gardner-Webb (02-08-10)
	17	BROWN, Devon at High Point (01-30-10)
	17	BROWN, Devon vs Longwood (01-12-10)
FG Pct (min 5 made).....	1.000 (7-7)	ANTIC, Jelena vs Presbyterian College (01-16-10)
	.875 (7-8)	BEECHER, Kylee vs Glenville State (12-05-09)
3-Point FG Made.....	3	BROWN, Devon vs Presbyterian College (01-16-10)
	3	BROWN, Devon at Navy (11-21-09)
	3	BROWN, Devon vs Tulane (11-20-09)
	3	BROWN, Devon vs Winston-Salem State (11-13-09)
3-Point FG Att.....	6	BROWN, Devon vs Winthrop (01-09-10)
	6	BROWN, Devon at Virginia (12-29-09)
	6	WASHINGTON, LaKendra vs Winston-Salem State (11-13-09)
3-Pt FG Pct (min 2 made).....	1.000 (2-2)	WASHINGTON, LaKendra at Coastal Carolina (01-25-10)
	1.000 (2-2)	MAYS, Amber vs UNC Asheville (01-18-10)
	1.000 (2-2)	ANTIC, Jelena at Gardner-Webb (01-02-10)
Free Throws Made.....	8	BROWN, Devon at Radford (02-01-10)
	8	WARLEY, Avery at High Point (01-30-10)
	8	BEECHER, Kylee vs UNC Asheville (01-18-10)
	8	BROWN, Devon at Navy (11-21-09)
Free Throw Att.....	11	WARLEY, Avery at High Point (01-30-10)
	10	BEECHER, Kylee vs UNC Asheville (01-18-10)
FT Pct (min 3 made).....	1.000 (6-6)	BROWN, Devon vs Longwood (01-12-10)
	1.000 (4-4)	BROWN, Devon at Coastal Carolina (01-25-10)
	1.000 (4-4)	BROWN, Devon at Gardner-Webb (01-02-10)
	1.000 (4-4)	BEECHER, Kylee vs Winston-Salem State (11-13-09)
	1.000 (4-4)	DALE, Danika vs Winston-Salem State (11-13-09)
	1.000 (3-3)	DALE, Danika at Winthrop (02-15-10)
	1.000 (3-3)	BROWN, Devon vs Winthrop (01-09-10)
	1.000 (3-3)	BROWN, Devon at Auburn (12-15-09)
	1.000 (3-3)	WARLEY, Avery at Lafayette (11-28-09)
Rebounds.....	16	WARLEY, Avery at Charleston Southern (01-23-10)
	14	WARLEY, Avery at High Point (01-30-10)
Assists.....	10	MAYS, Amber vs Winthrop (01-09-10)
	8	MAYS, Amber vs N.C. Central (02-04-10)
	8	MAYS, Amber vs Cornell (12-28-09)
Steals.....	5	BROWN, Devon vs Coastal Carolina (02-20-10)
	5	MORGAN, Dymond vs Presbyterian College (01-16-10)
	5	MAYS, Amber vs Longwood (01-12-10)
	5	BROWN, Devon at Navy (11-21-09)
	5	WASHINGTON, LaKendra vs Winston-Salem State (11-13-09)
Blocked Shots.....	3	WARLEY, Avery at Winthrop (02-15-10)
	3	WARLEY, Avery vs UNC Asheville (01-18-10)
Turnovers.....	8	MORGAN, Dymond vs Glenville State (12-05-09)
	7	MAYS, Amber at Virginia (12-29-09)

2009-10 Liberty Women's Basketball
 Liberty High/Low Analysis (as of Feb 21, 2010)
 All games

OPPONENT INDIVIDUAL GAME HIGHS

Points.....	22	Jackson, Lauren at Lafayette (11-28-09)
	20	MOSS, Sydnei at Coastal Carolina (01-25-10)
	19	STULL, Amanda vs Coastal Carolina (02-20-10)
	19	MOSS, Sydnei vs Coastal Carolina (02-20-10)
	19	Wright, Monica at Virginia (12-29-09)
Field Goals Made.....	7	MOSS, Sydnei vs Coastal Carolina (02-20-10)
	7	Wright, Monica at Virginia (12-29-09)
Field Goal Att.....	20	MILLER, Joanna vs N.C. Central (02-04-10)
	17	MOSS, Sydnei at Coastal Carolina (01-25-10)
FG Pct (min 5 made).....	.833 (5-6)	BROWN, Shamia at High Point (01-30-10)
	.833 (5-6)	SAMS,Jaleesa vs North Carolina A&T (01-05-10)
	.833 (5-6)	McCall, Telia at Virginia (12-29-09)
3-Point FG Made.....	5	STULL, Amanda vs Coastal Carolina (02-20-10)
	4	MOSS, Sydnei at Coastal Carolina (01-25-10)
	4	Smalley, Alli at Auburn (12-15-09)
	4	KALJO, Indira vs Tulane (11-20-09)
3-Point FG Att.....	12	KALJO, Indira vs Tulane (11-20-09)
	11	Autumn Davis vs Glenville State (12-05-09)
3-Pt FG Pct (min 2 made).....	1.000 (3-3)	HUDSON, Dominique vs Gardner-Webb (02-08-10)
	1.000 (2-2)	BLANKS, Shanise vs N.C. Central (02-04-10)
Free Throws Made.....	7	HUDSON, Monique at Gardner-Webb (01-02-10)
	7	Greenleaf, Jordan at Auburn (12-15-09)
	7	Hislop, Tarik vs James Madison (12-01-09)
	7	Jackson, Lauren at Lafayette (11-28-09)
Free Throw Att.....	9	Hislop, Tarik vs James Madison (12-01-09)
	8	FIELDS, Frances at High Point (01-30-10)
	8	TERRY, Helen at Charleston Southern (01-23-10)
	8	MONTGOMERY, Lindsey vs UNC Asheville (01-18-10)
	8	HUDSON, Monique at Gardner-Webb (01-02-10)
	8	Greenleaf, Jordan at Auburn (12-15-09)
	8	Jackson, Lauren at Lafayette (11-28-09)
FT Pct (min 3 made).....	1.000 (6-6)	ERWINSPENCER, Da'Nar at Radford (02-01-10)
	1.000 (4-4)	STULL, Amanda vs Coastal Carolina (02-20-10)
	1.000 (4-4)	MOSS, Sydnei at Coastal Carolina (01-25-10)
	1.000 (4-4)	SCHWAGMEYER, Ali at Charleston Southern (01-23-10)
	1.000 (4-4)	HUDSON, Dominique at Gardner-Webb (01-02-10)
	1.000 (3-3)	RYSKA, Kathi at Winthrop (02-15-10)
Rebounds.....	9	Consedine, Cassie at Navy (11-21-09)
	8	MOSS, Sydnei at Coastal Carolina (01-25-10)
	8	MONTGOMERY, Lindsey vs UNC Asheville (01-18-10)
Assists.....	9	HUDSON, Dominique at Gardner-Webb (01-02-10)
	6	HUDSON, Dominique vs Gardner-Webb (02-08-10)
	6	FIELDS, Frances at High Point (01-30-10)
Steals.....	10	Wright, Monica at Virginia (12-29-09)
	5	SHEPARD, Kendall vs UNC Asheville (01-18-10)
	5	Kellum, Paulisha at Virginia (12-29-09)
Blocked Shots.....	3	WHITE, Katie at Coastal Carolina (01-25-10)
	3	POPE, LaTroya at Gardner-Webb (01-02-10)
Turnovers.....	9	MILLER, Joanna vs N.C. Central (02-04-10)
	9	ERWINSPENCER, Da'Nar at Radford (02-01-10)
	9	Becky Fernandes vs Longwood (01-12-10)
	9	Benson, Lauren vs Cornell (12-28-09)
Fouls.....	5	WHITE, Chanel at Winthrop (02-15-10)
	5	RILES, Kelli vs UNC Asheville (01-18-10)
	5	Morgan Smith vs Longwood (01-12-10)

2009-10 Liberty Women's Basketball
 Liberty Team High/Low Analysis (as of Feb 21, 2010)
 All games

Liberty - TEAM GAME HIGHS

POINTS.....	90	at Lafayette (11-28-09)
	86	GLENVILLE STATE (12-05-09)
	82	UNC ASHEVILLE (01-18-10)
	78	LONGWOOD (01-12-10)
	75	at High Point (01-30-10)
FIELD GOALS MADE.....	37	at Lafayette (11-28-09)
	35	GLENVILLE STATE (12-05-09)
FIELD GOAL ATTEMPTS.....	63	UNC ASHEVILLE (01-18-10)
	61	LONGWOOD (01-12-10)
FIELD GOAL PERCENTAGE.....	.644 (29-45)	PRESBYTERIAN COLLEGE (01-16-10)
	.617 (37-60)	at Lafayette (11-28-09)
3 PT FIELD GOALS MADE.....	9	UNC ASHEVILLE (01-18-10)
	5	PRESBYTERIAN COLLEGE (01-16-10)
	5	WINTHROP (01-09-10)
3 PT FG ATTEMPTS.....	17	UNC ASHEVILLE (01-18-10)
	14	WINSTON-SALEM STATE (11-13-09)
3 PT FG PERCENTAGE.....	.667 (4-6)	vs Tulane (11-20-09)
	.529 (9-17)	UNC ASHEVILLE (01-18-10)
FREE THROWS MADE.....	26	at High Point (01-30-10)
	21	at Radford (02-01-10)
FREE THROW ATTEMPTS.....	35	at High Point (01-30-10)
	29	at Radford (02-01-10)
FREE THROW PERCENTAGE.....	.923 (12-13)	at Auburn (12-15-09)
	.800 (8-10)	at Virginia (12-29-09)
REBOUNDS.....	67	GLENVILLE STATE (12-05-09)
	54	LONGWOOD (01-12-10)
ASSISTS.....	25	GLENVILLE STATE (12-05-09)
	22	WINTHROP (01-09-10)
STEALS.....	19	PRESBYTERIAN COLLEGE (01-16-10)
	18	UNC ASHEVILLE (01-18-10)
BLOCKED SHOTS.....	6	UNC ASHEVILLE (01-18-10)
	5	at Winthrop (02-15-10)
TURNOVERS.....	33	GLENVILLE STATE (12-05-09)
	30	at Virginia (12-29-09)
FOULS.....	27	at Gardner-Webb (01-02-10)
	23	JAMES MADISON (12-01-09)
	23	at Lafayette (11-28-09)

2009-10 Liberty Women's Basketball
 Liberty High/Low Analysis (as of Feb 21, 2010)
 All games

Opponent - GAME HIGHS

POINTS.....	70	at Gardner-Webb (01-02-10)
	70	at Auburn (12-15-09)
	63	at Virginia (12-29-09)
	62	at High Point (01-30-10)
	60	JAMES MADISON (12-01-09)
FIELD GOALS MADE.....	24	at Auburn (12-15-09)
	23	GARDNER-WEBB (02-08-10)
FIELD GOAL ATTEMPTS.....	78	GLENVILLE STATE (12-05-09)
	54	JAMES MADISON (12-01-09)
FIELD GOAL PERCENTAGE.....	.523 (23-44)	GARDNER-WEBB (02-08-10)
	.480 (24-50)	at Auburn (12-15-09)
3 PT FIELD GOALS MADE.....	9	COASTAL CAROLINA (02-20-10)
	8	at Charleston Southern (01-23-10)
3 PT FG ATTEMPTS.....	49	GLENVILLE STATE (12-05-09)
	30	at Charleston Southern (01-23-10)
3 PT FG PERCENTAGE.....	.600 (3-5)	at Lafayette (11-28-09)
	.500 (9-18)	COASTAL CAROLINA (02-20-10)
FREE THROWS MADE.....	26	at Gardner-Webb (01-02-10)
	20	at Lafayette (11-28-09)
FREE THROW ATTEMPTS.....	36	at Gardner-Webb (01-02-10)
	32	JAMES MADISON (12-01-09)
FREE THROW PERCENTAGE.....	1.000 (6-6)	at Coastal Carolina (01-25-10)
	.818 (18-22)	at Charleston Southern (01-23-10)
REBOUNDS.....	41	JAMES MADISON (12-01-09)
	35	UNC GREENSBORO (11-17-09)
ASSISTS.....	17	at Gardner-Webb (01-02-10)
	16	vs Tulane (11-20-09)
STEALS.....	19	at Virginia (12-29-09)
	15	GLENVILLE STATE (12-05-09)
BLOCKED SHOTS.....	5	at Coastal Carolina (01-25-10)
	4	at High Point (01-30-10)
TURNOVERS.....	32	WINSTON-SALEM STATE (11-13-09)
	30	PRESBYTERIAN COLLEGE (01-16-10)
FOULS.....	25	at High Point (01-30-10)
	24	LONGWOOD (01-12-10)
	24	at Gardner-Webb (01-02-10)
	24	GLENVILLE STATE (12-05-09)

2009-10 Liberty Women's Basketball
 Liberty High/Low Analysis (as of Feb 21, 2010)
 All games

Liberty - GAME LOWS

POINTS.....	50	JAMES MADISON (12-01-09)
	52	at Winthrop (02-15-10)
	54	at Virginia (12-29-09)
	55	at Navy (11-21-09)
	56	GARDNER-WEBB (02-08-10)
FIELD GOALS MADE.....	18	JAMES MADISON (12-01-09)
	19	at Navy (11-21-09)
FIELD GOAL ATTEMPTS.....	41	at Radford (02-01-10)
	45	PRESBYTERIAN COLLEGE (01-16-10)
FIELD GOAL PERCENTAGE.....	.305 (18-59)	JAMES MADISON (12-01-09)
	.385 (20-52)	at Coastal Carolina (01-25-10)
3 PT FIELD GOALS MADE.....	0	GLENVILLE STATE (12-05-09)
	0	at Radford (02-01-10)
	0	COASTAL CAROLINA (02-20-10)
3 PT FG ATTEMPTS.....	1	GLENVILLE STATE (12-05-09)
	3	at Radford (02-01-10)
3 PT FG PERCENTAGE.....	.000 (0-1)	GLENVILLE STATE (12-05-09)
	.000 (0-3)	at Radford (02-01-10)
	.000 (0-5)	COASTAL CAROLINA (02-20-10)
FREE THROWS MADE.....	8	at Virginia (12-29-09)
	8	WINTHROP (01-09-10)
	8	N.C. CENTRAL (02-04-10)
FREE THROW ATTEMPTS.....	10	at Virginia (12-29-09)
	11	WINTHROP (01-09-10)
FREE THROW PERCENTAGE.....	.455 (10-22)	UNC GREENSBORO (11-17-09)
	.524 (11-21)	vs Cornell (12-28-09)
REBOUNDS.....	23	at Auburn (12-15-09)
	28	COASTAL CAROLINA (02-20-10)
ASSISTS.....	6	JAMES MADISON (12-01-09)
	6	at Auburn (12-15-09)
STEALS.....	6	JAMES MADISON (12-01-09)
	6	N.C. CENTRAL (02-04-10)
BLOCKED SHOTS.....	0	at Navy (11-21-09)
	1	at Lafayette (11-28-09)
	1	at Auburn (12-15-09)
	1	at Gardner-Webb (01-02-10)
	1	at Charleston Southern (01-23-10)
	1	COASTAL CAROLINA (02-20-10)
TURNOVERS.....	13	at Coastal Carolina (01-25-10)
	14	at Lafayette (11-28-09)
	14	at High Point (01-30-10)
	14	COASTAL CAROLINA (02-20-10)
FOULS.....	10	PRESBYTERIAN COLLEGE (01-16-10)
	11	UNC ASHEVILLE (01-18-10)

2009-10 Liberty Women's Basketball
 Liberty High/Low Analysis (as of Feb 21, 2010)
 All games

Opponent - GAME LOWS

POINTS.....	18	at Winthrop (02-15-10)
	26	WINSTON-SALEM STATE (11-13-09)
	27	PRESBYTERIAN COLLEGE (01-16-10)
	38	WINTHROP (01-09-10)
	38	at Coastal Carolina (01-25-10)
FIELD GOALS MADE.....	5	at Winthrop (02-15-10)
	10	PRESBYTERIAN COLLEGE (01-16-10)
FIELD GOAL ATTEMPTS.....	36	PRESBYTERIAN COLLEGE (01-16-10)
	39	at Lafayette (11-28-09)
FIELD GOAL PERCENTAGE.....	.119 (5-42)	at Winthrop (02-15-10)
	.192 (15-78)	GLENVILLE STATE (12-05-09)
3 PT FIELD GOALS MADE.....	0	at Winthrop (02-15-10)
	1	WINSTON-SALEM STATE (11-13-09)
	1	PRESBYTERIAN COLLEGE (01-16-10)
3 PT FG ATTEMPTS.....	5	at Lafayette (11-28-09)
	7	at Virginia (12-29-09)
3 PT FG PERCENTAGE.....	.000 (0-14)	at Winthrop (02-15-10)
	.056 (1-18)	PRESBYTERIAN COLLEGE (01-16-10)
FREE THROWS MADE.....	3	WINSTON-SALEM STATE (11-13-09)
	5	vs Tulane (11-20-09)
FREE THROW ATTEMPTS.....	5	WINSTON-SALEM STATE (11-13-09)
	6	at Coastal Carolina (01-25-10)
FREE THROW PERCENTAGE.....	.421 (8-19)	UNC GREENSBORO (11-17-09)
	.500 (5-10)	vs Tulane (11-20-09)
	.500 (8-16)	NORTH CAROLINA A&T (01-05-10)
REBOUNDS.....	18	PRESBYTERIAN COLLEGE (01-16-10)
	19	LONGWOOD (01-12-10)
ASSISTS.....	2	at Winthrop (02-15-10)
	5	WINSTON-SALEM STATE (11-13-09)
STEALS.....	2	at Lafayette (11-28-09)
	2	at High Point (01-30-10)
BLOCKED SHOTS.....	0	WINSTON-SALEM STATE (11-13-09)
	0	at Navy (11-21-09)
	0	vs Cornell (12-28-09)
	0	WINTHROP (01-09-10)
	0	COASTAL CAROLINA (02-20-10)
TURNOVERS.....	13	at Gardner-Webb (01-02-10)
	15	JAMES MADISON (12-01-09)
	15	at Charleston Southern (01-23-10)
FOULS.....	13	WINSTON-SALEM STATE (11-13-09)
	13	at Auburn (12-15-09)
	13	N.C. CENTRAL (02-04-10)

2009-10 Liberty Women's Basketball
 Liberty Team Game-by-Game (as of Feb 21, 2010)
 All games

TEAM STATISTICS

Opponent	Date	Score	W/L	---TOTAL---		--3-PTRS--		----REBOUNDS----				Pts---Avg								
				FG-FGA	Pct	3FG-FGA	Pct	FT-FTA	Pct	Off	Def	Tot	Avg	PF	A	TO	Blk	Stl	Pts	Avg
WINSTON-SALEM STATE	11-13-09	71-26	W	27-57	.474	4-14	.286	13-17	.765	16	23	39	39.0	15	18	19	4	15	71	71.0
UNC GREENSBORO	11-17-09	60-42	W	24-49	.490	2-9	.222	10-22	.455	13	27	40	39.5	17	10	19	4	14	60	65.5
vs Tulane	11-20-09	63-52	W	24-47	.511	4-6	.667	11-19	.579	15	23	38	39.0	16	10	24	3	11	63	64.7
at Navy	11-21-09	55-43	W	19-48	.396	3-8	.375	14-21	.667	17	23	40	39.2	14	11	18	0	7	55	62.2
at Lafayette	11-28-09	90-55	W	37-60	.617	3-6	.500	13-20	.650	15	18	33	38.0	23	15	14	1	14	90	67.8
JAMES MADISON	12-01-09	50-60	L	18-59	.305	1-9	.111	13-17	.765	14	32	46	39.3	23	6	20	3	6	50	64.8
GLENVILLE STATE	12-05-09	86-45	W	35-57	.614	0-1	.000	16-28	.571	18	49	67	43.3	17	25	33	2	11	86	67.9
at Auburn	12-15-09	64-70	L	25-51	.490	2-7	.286	12-13	.923	6	17	23	40.8	18	6	16	1	8	64	67.4
vs Cornell	12-28-09	70-40	W	28-53	.528	3-11	.273	11-21	.524	16	27	43	41.0	18	16	22	4	12	70	67.7
at Virginia	12-29-09	54-63	L	22-54	.407	2-11	.182	8-10	.800	16	18	34	40.3	20	7	30	3	10	54	66.3
at Gardner-Webb	01-02-10	65-70	L	23-52	.442	4-9	.444	15-25	.600	16	30	46	40.8	27	11	23	1	10	65	66.2
NORTH CAROLINA A&T	01-05-10	57-51	W	21-54	.389	1-6	.167	14-23	.609	19	26	45	41.2	16	13	23	3	11	57	65.4
WINTHROP	01-09-10	67-38	W	27-53	.509	5-13	.385	8-11	.727	12	25	37	40.8	15	22	16	3	14	67	65.5
LONGWOOD	01-12-10	78-55	W	30-61	.492	1-9	.111	17-24	.708	26	28	54	41.8	19	19	28	3	12	78	66.4
PRESBYTERIAN COLLEGE	01-16-10	73-27	W	29-45	.644	5-11	.455	10-17	.588	11	21	32	41.1	10	17	21	2	19	73	66.9
UNC ASHEVILLE	01-18-10	82-40	W	29-63	.460	9-17	.529	15-24	.625	24	25	49	41.6	11	21	18	6	18	82	67.8
at Charleston Souther	01-23-10	65-52	W	25-49	.510	1-6	.167	14-25	.560	15	29	44	41.8	17	10	17	1	8	65	67.6
at Coastal Carolina	01-25-10	57-38	W	20-52	.385	3-8	.375	14-23	.609	22	23	45	41.9	15	9	13	3	10	57	67.1
at High Point	01-30-10	75-62	W	24-50	.480	1-6	.167	26-35	.743	12	30	42	41.9	19	9	14	3	8	75	67.5
at Radford	02-01-10	63-45	W	21-41	.512	0-3	.000	21-29	.724	13	23	36	41.7	15	12	24	4	15	63	67.2
N.C. CENTRAL	02-04-10	64-44	W	26-52	.500	4-9	.444	8-13	.615	21	17	38	41.5	15	18	21	3	6	64	67.1
GARDNER-WEBB	02-08-10	56-59	L	21-53	.396	3-11	.273	11-18	.611	14	19	33	41.1	19	11	15	2	8	56	66.6
at Winthrop	02-15-10	52-18	W	20-51	.392	3-12	.250	9-14	.643	18	24	42	41.1	15	8	20	5	12	52	66.0
COASTAL CAROLINA	02-20-10	57-55	W	23-48	.479	0-5	.000	11-20	.550	13	15	28	40.6	16	10	14	1	12	57	65.6
Liberty		1574		598-1259	.475	64-207	.309	314-489	.642	382	592	974	40.6	410	314	482	65	271	1574	65.6
Opponents		1150		386-1144	.337	109-409	.267	269-410	.656	241	386	627	26.1	443	260	503	46	188	1150	47.9

Games played: 24
 Points/game: 65.6
 FG Pct: 47.5
 3FG Pct: 30.9
 FT Pct: 64.2

Rebounds/game: 40.6
 Assists/game: 13.1
 Turnovers/game: 20.1
 Assist/turnover ratio: 0.7
 Steals/game: 11.3
 Blocks/game: 2.7

2009-10 Liberty Women's Basketball
 Liberty Team Game-by-Game Comparison (as of Feb 21, 2010)
 All games

Opponent	1st	2nd	Score	Mar	Total FG	FG Pct	3-Pointers	3FG Pct	Free Throws	FT Pct	Rebounds	Assist	Turnover	Block	Steal	Fouls	
WINSTON-SALEM STATE.....	30/12	41/14	71-26	+45	27-57/11-42	.474/.262	4-14/ 1-12	.286/.083	13-17/ 3-5	.765/.600	39/25	+14	18/5	19/32	4/0	15/4	15/13
UNC GREENSBORO.....	32/21	28/21	60-42	+18	24-49/15-52	.490/.288	2-9 / 4-24	.222/.167	10-22/ 8-19	.455/.421	40/35	+5	10/10	19/21	4/1	14/11	17/21
Tulane.....	32/19	31/33	63-52	+11	24-47/20-48	.511/.417	4-6 / 7-21	.667/.333	11-19/ 5-10	.579/.500	38/22	+16	10/16	24/22	3/2	11/8	16/19
Navy.....	24/32	31/11	55-43	+12	19-48/15-44	.396/.341	3-8 / 4-20	.375/.200	14-21/ 9-15	.667/.600	40/26	+14	11/11	18/17	0/0	7/8	14/19
Lafayette.....	42/28	48/27	90-55	+35	37-60/16-39	.617/.410	3-6 / 3-5	.500/.600	13-20/20-26	.650/.769	33/20	+13	15/8	14/24	1/2	14/2	23/20
JAMES MADISON.....	16/28	34/32	50-60	(10)	18-59/18-54	.305/.333	1-9 / 5-18	.111/.278	13-17/19-32	.765/.594	46/41	+5	6/13	20/15	3/3	6/4	23/15
GLENVILLE STATE.....	39/23	47/22	86-45	+41	35-57/15-78	.614/.192	0-1 / 7-49	.000/.143	16-28/ 8-11	.571/.727	67/29	+38	25/12	33/20	2/1	11/15	17/24
Auburn.....	19/33	45/37	64-70	(6)	25-51/24-50	.490/.480	2-7 / 6-17	.286/.353	12-13/16-23	.923/.696	23/34	(11)	6/14	16/19	1/3	8/6	18/13
Cornell.....	31/14	39/26	70-40	+30	28-53/13-48	.528/.271	3-11/ 4-16	.273/.250	11-21/10-18	.524/.556	43/25	+18	16/9	22/22	4/0	12/6	18/17
Virginia.....	29/33	25/30	54-63	(9)	22-54/21-49	.407/.429	2-11/ 2-7	.182/.286	8-10/19-26	.800/.731	34/26	+8	7/13	30/20	3/2	10/19	20/15
Gardner-Webb.....	29/29	36/41	65-70	(5)	23-52/19-51	.442/.373	4-9 / 6-16	.444/.375	15-25/26-36	.600/.722	46/27	+19	11/17	23/13	1/3	10/9	27/24
NORTH CAROLINA A&T.....	33/27	24/24	57-51	+6	21-54/19-48	.389/.396	1-6 / 5-17	.167/.294	14-23/ 8-16	.609/.500	45/28	+17	13/13	23/19	3/3	11/9	16/18
WINTHROP.....	24/16	43/22	67-38	+29	27-53/13-41	.509/.317	5-13/ 3-9	.385/.333	8-11/ 9-13	.727/.692	37/21	+16	22/10	16/20	3/0	14/4	15/15
LONGWOOD.....	38/25	40/30	78-55	+23	30-61/18-52	.492/.346	1-9 / 7-22	.111/.318	17-24/12-18	.708/.667	54/19	+35	19/13	28/24	3/3	12/12	19/24
PRESBYTERIAN COLLEGE.....	36/10	37/17	73-27	+46	29-45/10-36	.644/.278	5-11/ 1-18	.455/.056	10-17/ 6-10	.588/.600	32/18	+14	17/7	21/30	2/1	19/10	10/16
UNC ASHEVILLE.....	41/17	41/23	82-40	+42	29-63/14-51	.460/.275	9-17/ 5-12	.529/.417	15-24/ 7-12	.625/.583	49/27	+22	21/9	18/25	6/1	18/9	11/19
Charleston Southern.....	37/24	28/28	65-52	+13	25-49/13-47	.510/.277	1-6 / 8-30	.167/.267	14-25/18-22	.560/.818	44/26	+18	10/10	17/15	1/2	8/6	17/23
Coastal Carolina.....	16/21	41/17	57-38	+19	20-52/13-41	.385/.317	3-8 / 6-14	.375/.429	14-23/ 6-6	.609/1.000	45/21	+24	9/7	13/20	3/5	10/7	15/19
High Point.....	34/41	41/21	75-62	+13	24-50/20-49	.480/.408	1-6 / 5-14	.167/.357	26-35/17-27	.743/.630	42/25	+17	9/15	14/16	3/4	8/2	19/25
Radford.....	30/15	33/30	63-45	+18	21-41/15-51	.512/.294	0-3 / 3-12	.000/.250	21-29/12-17	.724/.706	36/26	+10	12/8	24/23	4/3	15/7	15/21
N.C. CENTRAL.....	30/20	34/24	64-44	+20	26-52/17-45	.500/.378	4-9 / 2-11	.444/.182	8-13/ 8-12	.615/.667	38/21	+17	18/12	21/21	3/3	6/11	15/13
GARDNER-WEBB.....	27/25	29/34	56-59	(3)	21-53/23-44	.396/.523	3-11/ 6-13	.273/.462	11-18/ 7-12	.611/.583	33/27	+6	11/13	15/17	2/1	8/4	19/19
Winthrop.....	23/10	29/ 8	52-18	+34	20-51/ 5-42	.392/.119	3-12/ 0-14	.250/.000	9-14/ 8-11	.643/.727	42/32	+10	8/2	20/28	5/3	12/9	15/17
COASTAL CAROLINA.....	33/29	24/26	57-55	+2	23-48/19-42	.479/.452	0-5 / 9-18	.000/.500	11-20/ 8-13	.550/.615	28/26	+2	10/13	14/20	1/0	12/6	16/14

Note: Game totals are displayed in the format TEAM/OPPONENT for each category

2009-10 Liberty Women's Basketball
 Liberty Combined Team Statistics (as of Feb 21, 2010)
 Conference games

RECORD:	OVERALL	HOME	AWAY	NEUTRAL
ALL GAMES.....	(9-2)	(4-1)	(5-1)	(0-0)
CONFERENCE.....	(9-2)	(4-1)	(5-1)	(0-0)
NON-CONFERENCE.....	(0-0)	(0-0)	(0-0)	(0-0)

## Player	GP-GS	Min--Avg	---TOTAL---		---3-PTS---		FT-FTA	Pct	---REBOUNDS---				PF	FO	A	TO	Blk	Stl	Pts	Avg
			FG-FGA	Pct	3FG-FGA	Pct			Off	Def	Tot	Avg								
40 BROWN, Devon.....	11-11	320 29.1	66-145	.455	12-42	.286	30-40	.750	25	67	92	8.4	20	0	18	26	5	26	174	15.8
23 WARLEY, Avery.....	11-11	296 26.9	43-77	.558	0-0	.000	28-52	.538	38	58	96	8.7	36	2	5	28	15	14	114	10.4
21 MAYS, Amber.....	11-11	295 26.8	36-71	.507	2-4	.500	19-38	.500	8	13	21	1.9	25	1	47	30	1	18	93	8.5
11 ANTIC, Jelena.....	5-4	114 22.8	18-27	.667	3-5	.600	3-5	.600	12	9	21	4.2	11	1	4	12	0	6	42	8.4
15 BEECHER, Kylee.....	11-7	288 26.2	26-62	.419	1-7	.143	29-39	.744	24	30	54	4.9	21	0	11	16	3	13	82	7.5
32 McLEOD, Rachel.....	11-11	292 26.5	19-48	.396	4-9	.444	17-20	.850	13	21	34	3.1	8	0	22	15	0	14	59	5.4
25 MORGAN, Dymond.....	11-0	182 16.5	18-48	.375	4-13	.308	14-21	.667	1	9	10	0.9	23	0	18	20	0	21	54	4.9
12 DALE, Danika.....	11-0	202 18.4	19-40	.475	3-9	.333	12-15	.800	10	19	29	2.6	14	0	10	19	4	8	53	4.8
01 WASHINGTON, LaKendr	11-0	139 12.6	14-28	.500	5-12	.417	1-6	.167	4	6	10	0.9	14	0	4	13	0	14	34	3.1
54 COY, Carra.....	9-0	72 8.0	3-11	.273	0-0	.000	1-5	.200	11	5	16	1.8	7	0	1	5	3	0	7	0.8
TEAM.....																				
Total.....	11	2200	262-557	.470	34-101	.337	154-241	.639	170	264	434	39.5	179	4	140	195	31	134	712	64.7
Opponents.....	11	2200	164-495	.331	52-170	.306	124-179	.693	100	176	276	25.1	212	-	111	227	23	73	504	45.8

TEAM STATISTICS	LIBERTY	OPP	DATE	OPPONENT	W/L	SCORE	ATTEND
SCORING.....	712	504	*01-02-10	at Gardner-Webb	L	65-70	249
Points per game.....	64.7	45.8	*01-09-10	WINTHROP	W	67-38	557
Scoring margin.....	+18.9	-	*01-16-10	PRESBYTERIAN COLLEGE	W	73-27	688
FIELD GOALS-ATT.....	262-557	164-495	*01-18-10	UNC ASHEVILLE	W	82-40	826
Field goal pct.....	.470	.331	*01-23-10	at Charleston Southern	W	65-52	881
3 POINT FG-ATT.....	34-101	52-170	*01-25-10	at Coastal Carolina	W	57-38	687
3-point FG pct.....	.337	.306	*01-30-10	at High Point	W	75-62	439
3-pt FG made per game.	3.1	4.7	*02-01-10	at Radford	W	63-45	384
FREE THROWS-ATT.....	154-241	124-179	*02-08-10	GARDNER-WEBB	L	56-59	833
Free throw pct.....	.639	.693	*02-15-10	at Winthrop	W	52-18	560
F-Throws made per game	14.0	11.3	*02-20-10	COASTAL CAROLINA	W	57-55	3387
REBOUNDS.....	434	276	% = Navy Classic (Annapolis, Md.)				
Rebounds per game....	39.5	25.1	# = Marriott Cavalier Classic (Charlottesville, Va.)				
Rebounding margin....	+14.4	-	* = Big South Conference game				
ASSISTS.....	140	111					
Assists per game.....	12.7	10.1					
TURNOVERS.....	195	227					
Turnovers per game....	17.7	20.6					
Turnover margin.....	+2.9	-					
Assist/turnover ratio.	0.7	0.5					
STEALS.....	134	73					
Steals per game.....	12.2	6.6					
BLOCKS.....	31	23					
Blocks per game.....	2.8	2.1					
ATTENDANCE.....	6291	3200					
Home games-Avg/Game...	5-1258	6-533					
Neutral site-Avg/Game.	-	0-0					

SCORE BY PERIODS:	1st	2nd	Total
Liberty.....	330	382	- 712
Opponents.....	237	267	- 504

2009-10 Liberty Women's Basketball
 Liberty Extended Season Box Score (as of Feb 21, 2010)
 All games

RECORD:	OVERALL	HOME	AWAY	NEUTRAL
ALL GAMES.....	(19-5)	(10-2)	(7-3)	(2-0)
CONFERENCE.....	(9-2)	(4-1)	(5-1)	(0-0)
NON-CONFERENCE.....	(10-3)	(6-1)	(2-2)	(2-0)

# Player	GP-GS	Min--Avg	-----TOTAL-----			-----3-PTS-----			-----REBOUNDS-----			PF	FO	A	APG	TO	TOPG	A/TO	Blk	BPG	Stl	SPG	Pts	Avg	
			FG-FGA	Pct	3FG-FGA	Pct	3FG/G	FT-FTA	Pct	Off	Def														Tot
40 BROWN, Devon.....	24-24	683 28.5	149-315	.473	30-90	.333	1.25	70-96	.729	61 147	208	8.7	44	0	37	1.54	60	2.50	0.62	14	0.58	47	1.96	398	16.6
23 WARLEY, Avery.....	24-24	653 27.2	100-175	.571	0-0	.000	0.00	41-81	.506	89 112	201	8.4	73	4	11	0.46	65	2.71	0.17	18	0.75	23	0.96	241	10.0
21 MAYS, Amber.....	24-24	656 27.3	83-153	.542	4-7	.571	0.17	37-68	.544	11 30	41	1.7	62	2	103	4.29	77	3.21	1.34	1	0.04	56	2.33	207	8.6
11 ANTTIC, Jelena.....	14-8	328 23.4	45-86	.523	5-11	.455	0.36	17-27	.630	35 37	72	5.1	24	1	21	1.50	36	2.57	0.58	2	0.14	14	1.00	112	8.0
15 BECHER, Kylee.....	24-16	620 25.8	57-127	.449	1-11	.091	0.04	50-69	.725	45 52	97	4.0	41	0	24	1.00	42	1.75	0.57	7	0.29	20	0.83	165	6.9
32 McLEOD, Rachel.....	24-24	582 24.3	44-116	.379	5-17	.294	0.21	34-44	.773	20 35	55	2.3	26	0	42	1.75	37	1.54	1.14	1	0.04	23	0.96	127	5.3
01 WASHINGTON, Lakendr	24-0	339 14.1	44-98	.449	9-33	.273	0.38	10-21	.476	14 26	40	1.7	37	1	15	0.63	41	1.71	0.37	3	0.13	33	1.38	107	4.5
12 DALE, Danika.....	24-0	389 16.2	35-83	.422	5-20	.250	0.21	26-37	.703	24 57	81	3.4	29	0	26	1.08	41	1.71	0.63	11	0.46	19	0.79	101	4.2
25 MORGAN, Dymond.....	24-0	376 15.7	33-84	.393	5-18	.278	0.21	24-34	.706	7 32	39	1.6	48	0	34	1.42	52	2.17	0.65	0	0.00	34	1.42	95	4.0
54 COY, Garra.....	18-0	174 9.7	8-22	.364	0-0	.000	0.00	5-12	.417	15 15	30	1.7	26	0	1	0.06	13	0.72	0.08	8	0.44	2	0.11	21	1.2
TEAM.....										61 49	110	4.6	0				18								

Total.....	24	4800	598-1259	.475	64-207	.309	2.67	314-489	.642	382 592	974	40.6	410	8	314	13.08	482	20.08	0.65	65	2.71	271	11.29	1574	65.6
Opponents.....	24	4800	386-1144	.337	109-409	.267	4.54	269-410	.656	241 386	627	26.1	443	-	260	10.83	503	20.96	0.52	46	1.92	188	7.83	1150	47.9

SCORE BY PERIODS:	1st	2nd	Total	DEADBALL	REBOUNDS:	OFF	DEF	TOTAL
Liberty.....	725	849	- 1574			69	1	70
Opponents.....	552	598	- 1150			66	0	66

2009-10 Liberty Women's Basketball
 Liberty Combined Team Statistics (as of Feb 21, 2010)
 All games

RECORD:	OVERALL	HOME	AWAY	NEUTRAL
ALL GAMES.....	(19-5)	(10-2)	(7-3)	(2-0)
CONFERENCE.....	(9-2)	(4-1)	(5-1)	(0-0)
NON-CONFERENCE.....	(10-3)	(6-1)	(2-2)	(2-0)

## Player	GP-GS	Min--Avg	---TOTAL---		---3-PTS---		FT-FTA	Pct	---REBOUNDS---				PF	FO	A	TO	Blk	Stl	Pts	Avg
			FG-FGA	Pct	3FG-FGA	Pct			Off	Def	Tot	Avg								
40 BROWN, Devon.....	24-24	683 28.5	149-315	.473	30-90	.333	70-96	.729	61	147	208	8.7	44	0	37	60	14	47	398	16.6
23 WARLEY, Avery.....	24-24	653 27.2	100-175	.571	0-0	.000	41-81	.506	89	112	201	8.4	73	4	11	65	18	23	241	10.0
21 MAYS, Amber.....	24-24	656 27.3	83-153	.542	4-7	.571	37-68	.544	11	30	41	1.7	62	2	103	77	1	56	207	8.6
11 ANTIC, Jelena.....	14-8	328 23.4	45-86	.523	5-11	.455	17-27	.630	35	37	72	5.1	24	1	21	36	2	14	112	8.0
15 BEECHER, Kylee.....	24-16	620 25.8	57-127	.449	1-11	.091	50-69	.725	45	52	97	4.0	41	0	24	42	7	20	165	6.9
32 McLEOD, Rachel.....	24-24	582 24.3	44-116	.379	5-17	.294	34-44	.773	20	35	55	2.3	26	0	42	37	1	23	127	5.3
01 WASHINGTON, LaKendr	24-0	339 14.1	44-98	.449	9-33	.273	10-21	.476	14	26	40	1.7	37	1	15	41	3	33	107	4.5
12 DALE, Danika.....	24-0	389 16.2	35-83	.422	5-20	.250	26-37	.703	24	57	81	3.4	29	0	26	41	11	19	101	4.2
25 MORGAN, Dymond.....	24-0	376 15.7	33-84	.393	5-18	.278	24-34	.706	7	32	39	1.6	48	0	34	52	0	34	95	4.0
54 COY, Carra.....	18-0	174 9.7	8-22	.364	0-0	.000	5-12	.417	15	15	30	1.7	26	0	1	13	8	2	21	1.2
TEAM.....										61	49	110	4.6	0		18				

Total.....	24	4800	598-1259	.475	64-207	.309	314-489	.642	382	592	974	40.6	410	8	314	482	65	271	1574	65.6
Opponents.....	24	4800	386-1144	.337	109-409	.267	269-410	.656	241	386	627	26.1	443	-	260	503	46	188	1150	47.9

TEAM STATISTICS	LIBERTY	OPP	DATE	OPPONENT	W/L	SCORE	ATTEND

SCORING.....	1574	1150	11-13-09	WINSTON-SALEM STATE	W	71-26	1192
Points per game.....	65.6	47.9	11-17-09	UNC GREENSBORO	W	60-42	786
Scoring margin.....	+17.7	-	*11-20-09	vs Tulane	W	63-52	207
FIELD GOALS-ATT.....	598-1259	386-1144	*11-21-09	at Navy	W	55-43	852
Field goal pct.....	.475	.337	11-28-09	at Lafayette	W	90-55	324
3 POINT FG-ATT.....	64-207	109-409	12-01-09	JAMES MADISON	L	50-60	1209
3-point FG pct.....	.309	.267	12-05-09	GLENVILLE STATE	W	86-45	611
3-pt FG made per game.	2.7	4.5	12-15-09	at Auburn	L	64-70	1566
FREE THROWS-ATT.....	314-489	269-410	#12-28-09	vs Cornell	W	70-40	452
Free throw pct.....	.642	.656	#12-29-09	at Virginia	L	54-63	3096
F-Throws made per game	13.1	11.2	*01-02-10	at Gardner-Webb	L	65-70	249
REBOUNDS.....	974	627	01-05-10	NORTH CAROLINA A&T	W	57-51	365
Rebounds per game....	40.6	26.1	*01-09-10	WINTHROP	W	67-38	557
Rebounding margin....	+14.5	-	01-12-10	LONGWOOD	W	78-55	460
ASSISTS.....	314	260	*01-16-10	PRESBYTERIAN COLLEGE	W	73-27	688
Assists per game.....	13.1	10.8	*01-18-10	UNC ASHEVILLE	W	82-40	826
TURNOVERS.....	482	503	*01-23-10	at Charleston Southern	W	65-52	881
Turnovers per game....	20.1	21.0	*01-25-10	at Coastal Carolina	W	57-38	687
Turnover margin.....	+0.9	-	*01-30-10	at High Point	W	75-62	439
Assist/turnover ratio.	0.7	0.5	*02-01-10	at Radford	W	63-45	384
STEALS.....	271	188	02-04-10	N.C. CENTRAL	W	64-44	781
Steals per game.....	11.3	7.8	*02-08-10	GARDNER-WEBB	L	56-59	833
BLOCKS.....	65	46	*02-15-10	at Winthrop	W	52-18	560
Blocks per game.....	2.7	1.9	*02-20-10	COASTAL CAROLINA	W	57-55	3387
ATTENDANCE.....	11695	9697	% = Navy Classic (Annapolis, Md.)				
Home games-Avg/Game...	12-975	10-904	# = Marriott Cavalier Classic (Charlottesville, Va.)				
Neutral site-Avg/Game.	-	2-330	* = Big South Conference game				

SCORE BY PERIODS:	1st	2nd	Total

Liberty.....	725	849	- 1574
Opponents.....	552	598	- 1150