

**2009-10 Liberty
Women's Basketball
Quick Facts**

General Information

Name of School..... Liberty University
City/Zip Lynchburg, Va. 24502
Founded 1971
Enrollment 11,311
Nickname..... Lady Flames
School Colors Red, White & Blue
Home Arena..... Vines Center
Capacity..... 8,085
Affiliation..... NCAA Division I
Conference..... Big South
Founder..... Dr. Jerry Falwell
Chancellor..... Jerry Falwell, Jr.
Director of Athletics..... Jeff Barber
Athletics Dept. Phone..... (434) 582-2100

Women's Basketball Information

Head Coach..... Carey Green
Alma Mater Coastal Carolina, '79
Record at School 255-82 (11th Year)
Career Record..... Same
Assistant Coaches
..... Alexis Sherard (St. Michael's, '93)
..... Heather Stephens (Wyoming, '03)
..... Andy Bloodworth (Calvin, '98)
Certified Athletic Trainer
..... Madeline Bosek

History

First Season of Basketball..... 1975-76
All-Time Record..... 526-410
NCAA Tournament Appearances..... 12
Last NCAA Appearance..... 2009
Opponent..... Louisville
Result..... L/42-62 (First Round)
Final/Highest Ranking N/A
Final 2008-09 Record..... 24-9
Conference Record/Finish..... 15-1/First
Starters Returning/Lost..... 2/3
Letterwinners Returning/Lost..... 7/7
Newcomers..... 6

Athletics Communications Info.

Asst. AD - Communications
..... Todd Wetmore
SID Office Phone..... (434) 582-2292
Cell Phone..... (434) 841-8974
Email Address..... twetmore@liberty.edu
Assoc. Director Ryan Bomberger
Cell Phone (434) 221-5576
Email Address... rbomberger@liberty.edu
Asst. Director Paul Carmany
Cell Phone (434) 221-5575
Email Address..... pjcarmany@liberty.edu
Asst. Director Eric Brown
Cell Phone (434) 221-8817
Email Address..... eqbrown@liberty.edu
Grad. Assistant Jennifer Shelton
Cell Phone (828) 638-3876
Email Address..... jbshelton2@liberty.edu
WBB Contact..... Paul Carmany
Ath. Comm. Fax..... (434) 582-2076
Website..... LibertyFlames.com

Media Information

Radio

Station WWMC "The Light" (90.9 FM)
Play-By-Play Nick Pierce
Color..... Josh Wood

Television

Station Flames Sports Network
Play-By-Play..... Ray Jones
Color..... Jamie Hall

Game No. 24 - Feb. 20, 2010



**Coastal Carolina CHANTICLEERS
(14-9, 5-6 Big South)**

at



**Liberty LADY FLAMES
(18-5, 8-2 Big South)**

Lynchburg, Va. - Vines Center - 4 p.m.

The Game

Liberty (18-5, 8-2 Big South) will attempt to complete a season sweep of Coastal Carolina (14-9, 5-6 Big South) Saturday at 4 p.m., in the first half of a basketball double-header at the Vines Center. The game will be Liberty's annual WBCA Pink Zone contest and the Lady Flames' "Barefoot for Bare Feet" promotion for Samaritan's Feet.

Last Time Out

Liberty recorded arguably the best defensive performance in program history, Monday at Winthrop in a 52-18 victory. The Lady Flames set new program records for fewest points allowed and lowest opponent field goal percentage (.119) in the contest. Offensively, Devon Brown paced Liberty's attack with a game-high 15 points.

On Deck

The Lady Flames will conclude their quick homestand Monday at 7 p.m., when they host Charleston Southern. Liberty won its first matchup against the Buccaneers this season, 65-52, Jan. 23 at the CSU Field House.

Lady Flames On The Air

All Lady Flames basketball games may be heard LIVE on WWMC 90.9 FM "The Light." Jamie Hall, in the midst of his 16th year of broadcasting Lady Flames basketball, is once again handling the courtside play-by-play duties for road games. Nick Pierce and Josh Wood serve as the primary commentators for home contests.

Lady Flames On TV

All 15 of Liberty's home women's basketball games will be televised in 2009-10, including 14 on the Flames Sports Network (FSN) and one on SportSouth/MASN. The FSN broadcasting team consists of Ray Jones on play-by-play and Jamie Hall on color.

Liberty's Probable Starters

No.	Name	Pos.	Ht.	Yr.	PPG	RPG	Other Stats
21	Amber Mays	G	5-6	Sr.	8.5	1.7	4.4 apg
32	Rachel McLeod	G	5-10	Jr.	5.5	2.3	1.7 apg
40	Devon Brown	G	5-10	R-Fr.	16.7	8.8	1.8 spg
15	Kylee Beecher	F	6-4	So.	6.8	4.2	44.2 FG%
23	Avery Warley	F	6-3	R-So.	10.3	8.4	58.0 FG%

Reserves

1	LaKendra Washington	G	5-8	Fr.	4.5	1.7	1.4 spg
11	Jelena Antic	F	6-2	Fr.	8.5	5.3	1.5 apg
12	Danika Dale	G	6-1	So.	4.2	3.5	1.1 apg
25	Dymond Morgan	G	5-7	Jr.	4.0	1.7	1.5 spg
30	Brittany Campbell	G	6-0	R-Fr.	--	--	--
43	Kittery Maine	F	6-4	Jr.	--	--	--
54	Carra Coy	F	6-6	Fr.	1.1	1.6	0.5 bpg

2009-10 Liberty Women's Basketball Schedule/Results

Overall: 18-5
Big South: 8-2

11/13 WINSTON-SALEM ST.* W, 71-26
11/17 UNC GREENSBORO^ W, 60-42

Navy Classic (Annapolis, Md.)

11/20 vs. Tulane W, 63-52
11/21 at Navy W, 55-43

11/28 at Lafayette W, 90-55

12/1 JAMES MADISON^ L, 50-60
12/5 GLENVILLE STATE^ W, 86-45
12/15 at Auburn L, 64-70

Marriott Cavalier Classic (Charlottesville, Va.)

12/28 vs. Cornell W, 70-40
12/29 at No. 21/23 Virginia L, 54-63

1/2 at Gardner-Webb* L, 65-70
1/5 N.C. A&T^ W, 57-51
1/9 WINTHROP*^ W, 67-38
1/12 LONGWOOD^ W, 78-55
1/16 PRESBYTERIAN*^ W, 73-27
1/18 UNC ASHEVILLE*^ W, 82-40
1/23 at Charleston So.* W, 65-52
1/25 at Coastal Carolina* W, 57-38
1/30 at High Point* W, 75-62

2/1 at Radford* W, 63-45
2/4 N.C. CENTRAL^ W, 64-44
2/8 GARDNER-WEBB*& L, 56-59
2/15 at Winthrop* W, 52-18
2/20 COASTAL CAROLINA*^ 4 p.m.
2/22 CHARLESTON SO.*^ 7 p.m.
2/27 at UNC Asheville* 2 p.m.

3/1 at Presbyterian* 7 p.m.
3/5 RADFORD*^ 7 p.m.
3/8 HIGH POINT*^ 7 p.m.

*Big South WBB Championship
(High Point, N.C.)*

3/12 Quarterfinals TBA
3/13 Semifinals# 1/3 p.m.
3/14 Championship Game# 2 p.m.

NCAA Tournament

3/20-21 First Round TBA
3/22-23 Second Round TBA

Home Games in BOLD CAPS

* - Big South Conference Game
All times are Eastern Standard Time
^ - Broadcast on
Flames Sports Network
& - Broadcast on SportSouth/MASN

Team Statistical Leaders

Total Points

Devon Brown - 384/16.7 ppg
Avery Warley - 236/10.3 ppg

Total Rebounds

Devon Brown - 202/8.8 rpg
Avery Warley - 193/8.4 rpg

Total Assists

Amber Mays - 101/4.4 apg
Rachel McLeod - 39/1.7 apg

Total Steals

Amber Mays - 55/2.4 spg
Devon Brown - 42/1.8 spg

Head Coach Carey Green

Record at Liberty: 255-82 (11th Year)
Career Record: Same

9 Big South Championships: 2000, 2001, 2002, 2003, 2004, 2005, 2006, 2008, 2009
8 NCAA Appearances: 2000, 2001, 2002, 2003, 2004, 2005 (Sweet 16), 2006, 2008, 2009
5-time Big South Coach of the Year: 2000, 2003, 2006, 2008, 2009
3-time VaSID State Coach of the Year: 2003, 2005, 2006

Liberty head women's basketball coach Carey Green, in his 11th season with the Lady Flames, has instilled quite a winning tradition during his tenure at the institution. His teams have averaged more than 23 victories per year, putting his name alongside the nation's premier women's basketball coaches.

Green has accumulated a 255-82 record on the Liberty bench, good for a winning percentage of .757. He currently ranks ninth all-time among NCAA Division I women's basketball coaches in winning percentage, ahead of renowned coaching names like Rutgers' Vivian Stringer, LSU's Van Chancellor and North Carolina's Sylvia Hatchell.

More importantly, Liberty has won the Big South Tournament title and advanced to the NCAA Tournament nine times with Green as head coach. Liberty has totaled 23 or more victories during eight of those years, including the 2004-05 season, which saw the Lady Flames reach the Sweet 16 for the first time in program history.

Green has actually been to the postseason on 21 occasions as a women's basketball coach, a span which includes a dozen years as an assistant coach at Clemson. In all but one of the 21 appearances, he has experienced the NCAA Tournament.

Last season, Green earned his unprecedented fifth Big South Coach of the Year award, after guiding a team decimated by ACL injuries to a 24-9 record and its 12th NCAA Tournament appearance in the last 13 years. The Lady Flames also won the Hokie Hardwood Classic, claiming their first-ever victory over Virginia Tech in the tournament championship game.

At season's end, Green saw his second player selected in the WNBA Draft, as Megan Frazee was taken in the second round by the San Antonio Silver Stars. She then played part of her rookie season alongside 2005 Liberty alum Katie (Feenstra) Mattera in San Antonio.

Rebounding and defense have always been staples of Green-coached teams, and the 2008-09 Lady Flames were no exception. Liberty outrebounded opponents by an average of 12.7 caroms per game, ranking second nationally. The Lady Flames have now been listed among the nation's top five teams in rebounding margin for six straight years. Liberty led the nation in the category in 2003-04 and 2004-05. The Lady Flames also ended the season ranked in the top 10 nationally for scoring defense (second, 52.6 ppg) and field goal percentage defense (sixth, .345).

A key late-season conference victory over High Point in 2006 made Green the winningest coach in Big South Conference history. He is also Liberty's career wins leader.

The 2004-05 year was a special one on Liberty Mountain, for many reasons. A senior-laden Lady Flames team recorded upset wins over No. 4 seed Penn State (78-70) and No. 5 seed DePaul (88-79) in the first two rounds of the NCAA Tournament, becoming just the second team ever to advance to the Sweet 16 as a No. 13 seed. The Lady Flames ended the season with their highest national ranking to date, No. 21 (USA Today/ESPN).

Green's track record shows he has the ability to meet those challenges. The Lady Flames have recorded two wins over UNLV, Virginia and West Virginia and solo victories over No. 19 DePaul, No. 17 Kansas State, No. 25 Penn State, Virginia Tech and Wake Forest during Green's tenure. The upset victory over No. 25 Virginia in 2003 marked Liberty's first win over a Top 25 team.

His record against conference foes is equally impressive. He led the Lady Flames on a Big South record 47-game winning streak and currently owns a .910 (162-16) winning percentage against conference teams. Green has marched through conference play with one or fewer setbacks seven times, while guiding the Lady Flames to two undefeated conference seasons.

Big South Conference Update

(Records Updated Through 2/16)

Overall Standings

	W	L	Pct.
Gardner-Webb	22	3	.880
Liberty	18	5	.783
Coastal Carolina	14	9	.609
Charleston So.	14	10	.583
High Point	14	11	.560
Winthrop	10	15	.400
UNC Asheville	7	18	.280
Radford	5	17	.227
Presbyterian	5	19	.208

Conference Standings

	W	L	Pct.
Gardner-Webb	11	1	.917
Liberty	8	2	.800
High Point	7	5	.583
Charleston So.	6	5	.545
Coastal Carolina	5	6	.455
Radford	4	7	.364
Winthrop	4	7	.364
Presbyterian	3	7	.300
UNC Asheville	2	10	.167

Upcoming Schedule

Saturday, Feb. 20

Presbyterian at Gardner-Webb	3 p.m.
Charleston So. at Radford	3 p.m.
Coastal Carolina at Liberty	4 p.m.
UNC Asheville at High Point	4 p.m.

Monday, Feb. 22

Winthrop at Gardner-Webb	7 p.m.
Charleston So. at Liberty	7 p.m.
Presbyterian at High Point	7 p.m.
Coastal Carolina at Radford	7 p.m.

Saturday, Feb. 27

Liberty at UNC Asheville	2 p.m.
Charleston So. at Gardner-Webb	3 p.m.
High Point at Winthrop	4 p.m.
Radford at Presbyterian	5 p.m.

Monday, March 1

Coastal Carolina at Winthrop	7 p.m.
Radford at UNC Asheville	7 p.m.
Liberty at Presbyterian	7 p.m.

Friday, March 5

Gardner-Webb at Coastal Car.	7 p.m.
Winthrop at UNC Asheville	7 p.m.
Presbyterian at Charleston So.	7 p.m.
Radford at Liberty	7 p.m.

Monday, March 8

Winthrop at Charleston So.	7 p.m.
High Point at Liberty	7 p.m.
Presbyterian at Coastal Car.	7 p.m.

End Regular Season



Scouting Coastal Carolina

Coastal Carolina enters Saturday's game listed fifth in the Big South Conference standings. However, the Chanticleers are only a game and a half out of third place.

Coastal Carolina is 10-1 at home, with the lone loss coming at the hands of Liberty, but the Chanticleers are only 2-8 in road contests. Coastal Carolina's last road triumph was a 49-35 victory at Savannah State on Dec. 5. Since then, the Chanticleers have dropped six straight decisions away from Conway, S.C.

Sydnei Moss, a 5-10 junior guard/forward, and Amanda Stull, a 5-9 senior guard, combine to score 41.3 percent of the Chanticleers' points. Moss is averaging 14.5 ppg and 6.5 rpg, pacing the team in both categories. In conference play, she has boosted her scoring output to 15.6 ppg. Meanwhile, Stull contributes 10.3 ppg and is shooting 51.4 percent (37-of-72) from behind the three-point arc.

The Coaching Matchup

Liberty Head Coach Carey Green is in his 11th season with the Lady Flames, and has led his team to nine Big South titles. A five-time Big South Coach of the Year, Green owns a 255-82 career record and is the all-time wins leader at Liberty and among Big South women's basketball coaches. His career winning percentage (.757) ranked ninth all-time among NCAA Division I women's basketball coaches at the season's outset. Green is 24-0 against Coastal Carolina, his alma mater.

Alan LeForce, in his 13th season at Coastal Carolina, owns a 189-173 career record with the Chanticleers. His overall record is 429-349, in 28 years as a collegiate head coach. LeForce also coached the East Tennessee State men's basketball team for six seasons, prior to taking the reins at Coastal Carolina. He is 0-29 against Liberty.

Liberty-Coastal Carolina Series Notes

Liberty has won 32 consecutive meetings with Coastal Carolina, increasing its all-time lead in the head-to-head series to 42-7. The Lady Flames' winning streak versus the Chanticleers is the seventh-longest active streak against a single opponent in Division I women's basketball.

Saturday's game will be the 50th all-time meeting between Liberty and Coastal Carolina in women's basketball. The Lady Flames have only faced one opponent more often, playing 51 contests versus Commonwealth foe Radford.

Liberty has won 14 straight home games against the Chanticleers, since a 68-62 victory by Coastal Carolina, Jan. 22, 1996 at the Vines Center. The Lady Flames' last two home triumphs over the Chanticleers have come by an average of 31.0 ppg, including a 65-40 victory on Jan. 26, 2009. In that contest, Moriah Frazee paced Liberty with 19 points and five boards.

Coastal Carolina led Liberty by a 28-18 count with 17:02 remaining, Jan. 25 at Kimbel Arena, before the Lady Flames started to come back. Liberty ended the game on a 24-2 run, claiming a 57-38 road win in the teams' first matchup of the 2009-10 season.

Devon Brown (17 points, 10 rebounds) and Avery Warley (15 points, 12 rebounds) led the way for Liberty. Meanwhile, Sydnei Moss scored a game-high 20 points for the Chanticleers and added eight rebounds.

Liberty.....Statistical Comparison..... Coastal Carolina

18-5	Record	14-9
47.5	Field Goal Percentage	38.7
33.3	Opponent Field Goal Percentage	41.1
31.7	Three-Point Field Goal Percentage	34.3
2.8	Three-Pointers Made Per Game	4.3
64.6	Free Throw Percentage	68.4
41.1	Rebound Average	32.7
26.1	Opponent Rebound Average	37.1
+15.0	Rebound Differential	-4.4
66.0	Points Per Game	57.6
47.6	Points Allowed Per Game	58.1
+18.3	Point Differential	-0.6

NCAA Top 25 Polls

AP Top 25

- 1) Connecticut (25-0)..... 1,000 pts.
- 2) Stanford (23-1)959
- 3) Nebraska (23-0)901
- 4) Notre Dame (23-1)891
- 5) Tennessee (23-2)848
- 6) Xavier (20-3).....773
- 7) Ohio State (25-3).....746
- 8) Duke (21-4)726
- 9) West Virginia (22-3).....666
- 10) Florida State (21-4)633
- 11) Oklahoma (18-6).....600
- 12) Texas (18-6)568
- 13) Iowa State (19-4).....437
- 14) Georgetown (20-4)385
- 15) Texas A&M (17-6).....380
- 16) Kentucky (21-4).....352
- 17) Oklahoma State (18-6).....324
- 18) Baylor (17-7).....308
- 19) Georgia Tech (20-5)263
- 20) Georgia (20-6).....217
- 21) Gonzaga (21-4)186
- 22) St. John's (20-5)133
- 23T) TCU (19-5)128
- 23T) LSU (17-7).....128
- 25) Vanderbilt (18-7)..... 117

2009-10 Opponents in Bold

ESPN/USA Today Coaches Top 25

- 1) Connecticut (26-0)..... 775 pts.
- 2) Stanford (23-1)741
- 3T) Notre Dame (23-1)696
- 3T) Nebraska (23-0)696
- 5) Tennessee (23-2)656
- 6) Xavier (20-3).....617
- 7) Duke (21-4)571
- 8) West Virginia (22-3).....559
- 9) Ohio State (25-3).....539
- 10) Florida State (22-4)503
- 11) Oklahoma (18-7).....433
- 12T) Georgetown (20-4).....389
- 12T) Iowa State (19-4).....389
- 14) Texas (18-6)341
- 15) Texas A&M (17-6).....336
- 16) Kentucky (21-4)275
- 17) Oklahoma State (18-6).....239
- 18) Virginia (19-6).....211**
- 19) Baylor (17-7).....200
- 20T) Georgia (20-6).....185
- 20T) Vanderbilt (18-7).....185
- 22) Gonzaga (21-4)142
- 23) St. John's (20-5)120
- 24) Hartford (21-3).....82
- 25) TCU (19-5)47

2009-10 Opponents in Bold

Barefoot for Bare Feet

Liberty head coach Carey Green and his assistants will coach Saturday's game barefoot, as part of the Lady Flames' "Barefoot for Bare Feet" promotion. The Big South Conference-wide event is designed to raise awareness of the Samaritan's Feet charity. Monetary donations and gently-worn shoes will be collected at the Vines Center, to help the more than 300 million children in the world who lack shoes to wear.

This will be the second time Green has coached barefoot this season. He also took off his shoes for the Lady Flames' Jan. 23 game at Charleston Southern, when Buccaneers head coach Julie Goodenough and her staff had their "Barefoot for Bare Feet" night.

WBCA Pink Zone Recognition

Saturday's game will also mark Liberty's annual participation in the Women's Basketball Coaches Association (WBCA) Pink Zone event. The Lady Flames will wear pink warmups and pink shoelaces, while the coaching staff sports pink outfits as part of the event.

Liberty is one of 1,550 schools and organizations participating in the event to promote breast cancer awareness. The Lady Flames will also raise money for Kay Yow/WBCA Breast Cancer Foundation through their inaugural Awareness Walk, to be held prior to tipoff at the Vines Center.

Among the Nation's Best

The Lady Flames have defeated Coastal Carolina 32 straight times, dating back to Jan. 20, 1997. It marks the seventh-longest active winning streak by a Division I women's basketball squad against a single opponent, through games played on Feb. 17. Below is a look at the other national leaders

- 1) Stanford - 50 straight wins over Washington State
- 2) Old Dominion - 47 straight wins over William & Mary
- 3) Old Dominion - 41 straight wins over UNC Wilmington
- 4) Tennessee - 38 straight wins over South Carolina
- 5) Tennessee - 35 straight wins over Alabama
- 6) UC Santa Barbara - 34 straight wins over Cal State Fullerton
- 7) Liberty - 32 straight wins over Coastal Carolina**

Liberty Versus the Big South Conference

Liberty has enjoyed a considerable amount of success versus Big South Conference opposition, since joining the league for the 1991-92 season. The Lady Flames have won the conference tournament 12 times and captured 11 regular-season championships.

Liberty is 235-69 (.773) all-time against Big South opponents, including **199-63** in regular-season matchups and 36-6 in Big South Championship tilts. During Carey Green's tenure as head coach, the Lady Flames are 162-16 (.910) when facing Big South foes.

Fabulous in February

Liberty has won 94 of its last 100 games played during the month of February, dating back to the 1997 Big South Championship. The only teams to defeat the Lady Flames in February since then are High Point (three times), Gardner-Webb, UNC Asheville and Winthrop.

The Lady Flames own a 175-122 all-time mark during the year's second month, including a 75-6 record under Carey Green. Liberty, which went 6-0 in February a season ago and is 3-1 this February, has seven games scheduled this month.

Dominating Defensive Effort

The Lady Flames enjoyed a record-setting defensive performance Monday at Winthrop. Liberty established new program records for fewest points allowed (18) and lowest opponent field goal percentage (.119) during its 52-18 triumph.

Liberty also came just two points away from equaling the fewest points ever allowed in a game between two Division I women's basketball teams.

Interestingly, the Lady Flames' defensive effort came one game after their 105-game streak of holding opponents below 50 percent shooting from the field was snapped.

**Liberty in the
Big South Stats**
(Through Games of 2/16)

Team

Scoring Offense (4th)	66.0 ppg
Scoring Defense (1st)	47.6 ppg
Scoring Margin (1st)	+18.3 ppg
Free Throw Pct. (6th)646
Field Goal Pct. (1st)475
Field Goal Pct. Defense (1st) ..	.333
3-Pt. FG Pct. (4th)317
3-Pt. FG Pct. Defense (1st)256
3-Pt. FG Made (9th)	2.8/game
Rebounds (1st)	41.1 rpg
Opp. Rebounds (1st)	26.1 rpg
Rebounding Margin (1st)	+15.0 rpg
Offensive Rebounds (1st) ..	16.0 rpg
Defensive Rebounds (5th) ..	25.1 rpg
Blocked Shots (6th)	2.8 bpg
Assists (3rd)	13.2 apg
Steals (1st)	11.3 spg
Turnover Margin (6th)	+0.65
Asst./TO Ratio (4th)	0.65

Individual

Scoring

Devon Brown (1st)	16.7 ppg
Avery Warley (15th)	10.3 ppg
Amber Mays (25th)	8.5 ppg

Rebounding

Devon Brown (2nd)	8.8 rpg
Avery Warley (3rd)	8.4 rpg

Offensive Rebounds

Avery Warley (2nd)	3.7 rpg
Devon Brown (5th)	2.5 rpg
Kylee Beecher (14th)	1.9 rpg

Defensive Rebounds

Devon Brown (1st)	6.3 rpg
Avery Warley (5th)	4.7 rpg

Field Goal Pct.

Avery Warley (2nd)580
Devon Brown (4th)475

Assists

Amber Mays (2nd)	4.4 apg
------------------------	---------

Free Throw Pct.

Devon Brown (6th)747
-------------------------	------

Steals

Amber Mays (2nd)	2.4 spg
Devon Brown (10th)	1.8 spg

Three-Point FG Made

Devon Brown (11th)	1.3/game
--------------------------	----------

Blocked Shots

Avery Warley (7th)	0.7 bpg
Devon Brown (13th)	0.6 bpg

One Milestone Down, One to Go

Redshirt sophomore Avery Warley reached a career milestone during Monday's game at Winthrop. With her putback hoop 13:42 before halftime, Warley became the 50th player in program to score 500 career points.

Warley is also closing in on the 500-rebound milestone, as she has collected 449 boards during the first 56 games of her career. Only 20 Lady Flames have ever tallied 500 career rebounds.

Bravo to Brown

Devon Brown won the Big South Player of the Week award on Feb. 9, for the second time this season. She averaged 24.5 ppg and 11.0 rpg during the Lady Flames' road wins at High Point and Radford.

Brown is one of two conference players (also Gardner-Webb's Margaret Roundtree) to capture a pair of Big South Player of the Week awards so far in 2009-10. It also marked the fourth consecutive week a Liberty player received a conference award. Jelena Antic captured back-to-back Big South Freshman of the Week plaudits on Jan. 12 and 19, while Avery Warley was recognized as Big South Player of the Week on Jan. 26.

20/20 Vision

Devon Brown (29 points) and Avery Warley (26 points) both set new career highs for points during a Jan. 30, 75-62 victory at High Point. In the process, the duo became the first pair of Lady Flames to score 20 points in the same game since Megan Frazee had 22 points and sister Moriah Frazee added 20 in a 76-57 triumph over High Point on Jan. 29, 2008.

Brown and Warley's 55 combined points are the most by a Liberty duo in the same game since Nov. 25, 1997. That day, Elena Kisseleva (35 points) and Sharon Wilkerson (33 points) teamed up to score 68 points in an 85-77 home win over Campbell.

National Leader

Liberty, which has outrebounded 22 of its 23 opponents this season, ranks as the nation's No. 1 team in rebound margin, including games played through Feb. 14. The Lady Flames, who own a +15.0 rebound margin, have ranked among the nation's top five rebounding squads for six consecutive seasons. Liberty led the nation in rebound margin in back-to-back years, 2003-04 and 2004-05.

First-Half Defense

Points have come at a premium for Liberty's opponents during the first half this season. The Lady Flames limited Winthrop to 10 first-half markers on Monday, the eighth time Liberty has held its opponent under 20 points in the opening period. The Lady Flames have gone on to win all eight contests.

Only three of Liberty's first 23 opponents have managed to score 30 points during the opening 20 minutes of play. The Lady Flames are yielding an average of just 22.7 points in the first half of games in 2009-10.

No Triples? No Problem

Liberty did not make any three-pointers during its Feb. 1 win at Radford, shooting 0-3 from behind the arc. It was the seventh time this season that the Lady Flames have connected on either zero or one triples in a contest. Liberty is 6-1 in those games, despite its lack of three-point shooting.

70 is the Magic Number

Liberty is 8-0 this season when scoring at least 70 points in a game, extending a lengthy streak. The Lady Flames have now won 90 consecutive games when reaching the 70-point plateau offensively.

No. 24 Boston College was the most recent team to defeat Liberty when the Lady Flames tallied 70 points. The Eagles dealt the Lady Flames a 74-70 overtime loss, Dec. 6, 2003 at the Brown Classic.

Liberty has not dropped a game when scoring 70 points in regulation since Dec. 4, 2002. That day, the Lady Flames fell at Richmond by an 88-74 count.

Miscellaneous Stats For the 2009-10 Lady Flames

Team Scoring Leaders

Devon Brown	13 times
Avery Warley	5 times
Jelena Antic	3 times
Amber Mays	3 times
Kylee Beecher	1 time
Danika Dale	1 time
LaKendra Washington	1 time

20-Point Games

Devon Brown	6 times
Avery Warley	1 time
LaKendra Washington	1 time

Team Rebounding Leaders

Devon Brown	12 times
Avery Warley	9 times
Jelena Antic	3 times
Danika Dale	1 time

10-Rebound Games

Devon Brown	10 times
Avery Warley	9 times
Jelena Antic	2 times

Team Assist Leaders

Amber Mays	17 times
Rachel McLeod	5 times
Devon Brown	4 times
Jelena Antic	2 times
Dymond Morgan	2 times
Kylee Beecher	1 time
Danika Dale	1 time
Avery Warley	1 time

5-Assist Games

Amber Mays	9 times
Dymond Morgan	2 times
Rachel McLeod	1 time

Team Steal Leaders

Amber Mays	9 times
Devon Brown	8 times
LaKendra Washington	6 times
Dymond Morgan	5 times
Kylee Beecher	3 times
Rachel McLeod	3 times
Danika Dale	1 time
Avery Warley	1 time

3-Steal Games

Amber Mays	10 times
Devon Brown	8 times
Dymond Morgan	6 times
LaKendra Washington	6 times
Jelena Antic	2 times
Danika Dale	2 times
Rachel McLeod	2 times
Kylee Beecher	1 time
Avery Warley	1 time

Team Blocked Shot Leaders

Avery Warley	10 times
Devon Brown	9 times
Danika Dale	6 times
Carra Coy	5 times
Kylee Beecher	3 times
LaKendra Washington	2 times
Jelena Antic	1 time
Amber Mays	1 time

3-Block Games

Avery Warley	2 times
--------------	---------

Including Ties

Big Wins, Tight Losses

The Lady Flames' 18 victories this season have come by an average of 25.3 points. Liberty's tightest win was a 57-51 home victory over North Carolina A&T on Jan. 5.

Meanwhile, Liberty has lost its five games by a total of 33 points. James Madison posted the widest margin of victory over the Lady Flames, defeating Liberty 60-50, Dec. 1 at the Vines Center.

Double-Double x 2

Before Jan. 12, the Lady Flames had not seen a pair of players record double-doubles in the same game since Nov. 24, 2007. However, Liberty has accomplished the feat four times in its last 10 games.

Longwood (Jan. 12): Jelena Antic (19 pts., 10 rebs.) & Devon Brown (16 pts., 13 rebs.)
Coastal Carolina (Jan. 25): D. Brown (17 pts., 10 rebs.) & A. Warley (15 pts., 12 rebs.)
High Point (Jan. 30): Devon Brown (29 pts., 11 rebs.) & Avery Warley (26 pts., 14 rebs.)
Gardner-Webb (Feb. 8): D. Brown (13 pts., 13 rebs.) & A. Warley (15 pts., 10 rebs.)

Amber Accumulates Assists

Senior Amber Mays tallied a career-high 10 assists during a Jan. 9, 67-38 victory over Winthrop, the most by a Lady Flame since Nov. 22, 2002. That evening, Daina Staugaitiene dished out 10 helpers in a 90-35 season-opening win over Morgan State.

Mays is currently averaging 4.4 assists per contest on the year. No Liberty point guard has averaged that many assists for an entire season since 1998-99, when Sarah Wilkerson distributed 4.4 apg.

Tournament Tested

Liberty has played in a pair of tournaments this season, the Navy Classic (Nov. 20-21) and the Marriott Cavalier Classic (Dec. 28-29). The Lady Flames won the Navy Classic, while finishing second at this week's Marriott Cavalier Classic.

Liberty has won four regular-season tournament championships during the last three years, a list which also includes the 2008 National City Xavier Invitational, the 2008 UNLV Lady Rebel Christmas Classic and the 2009 Hokie Hardwood Classic.

Wanted for Theft

Liberty has employed an aggressive, trapping defense this season, helping the Lady Flames pace the Big South with 11.3 steals per contest. Liberty has tallied double-digit steals 16 times in its first 23 games of the year, after doing so only nine times during the entire 2008-09 campaign. Leading the way is senior Amber Mays, who has accounted for 55 of the Lady Flames' 259 thefts.

The Container is Half Full

This season, the Lady Flames are 9-0, when shooting 50 percent or higher from the field. Liberty is now 68-0 under head coach Carey Green, when the Lady Flames sink at least half of their field goals.

Painting a Masterpiece

Last season, Liberty regularly controlled the area around the basket, outscoring 29 of 33 opponents in the "points in the paint" statistical category.

This year, the Lady Flames are off to an outstanding start in racking up "points in the paint" once again. Liberty has outscored all 23 opponents inside the paint in 2009-10, by an average margin of 23.6 points (39.1 to 15.5).

12 x 10 for No. 40

Redshirt freshman Devon Brown scored a game-high 15 points during Monday's game versus Gardner-Webb, putting her in double figures for the 12th straight game. Gardner-Webb was the last opponent to hold the Big South's leading scorer under 10 points, limiting Brown to nine tallies on Jan. 2.

2009 graduate Megan Frazee set the school record by scoring in double figures 68 straight times (Jan. 27, 2007 through March 15, 2009).

Liberty's Record ...

When Liberty controls the tip	13-0
When opponent controls the tip.....	5-5
Played at home.....	9-2
Played on the road	7-3
Played at a neutral site	2-0
Played a team with a .500+ record.....	8-5
Played a team with a .500 record.....	2-0
Played a team with a below .500 record.....	8-0
When Liberty leads at the half	15-1
When opponent leads at the half.....	3-3
When there is a tie at the half.....	0-1
When Liberty leads with 5:00 left.....	18-1
When opponent leads with 5:00 left	0-4
When there is a tie with 5:00 left	0-0
When Liberty leads with 1:00 left.....	18-0
When opponent leads with 1:00 left	0-4
When there is a tie with 1:00 left	0-1
When Liberty outrebounds opponent	18-4
When opponent outrebounds Liberty	0-1
When the teams' rebound totals are equal...	0-0
When Liberty shoots 50% or better (FG).....	9-0
When Liberty shoots less than 50% (FG).....	9-5
When Liberty outshoots its opponents	17-2
When opponents outshoot Liberty	1-3
When the teams shoot the same pct	0-0
When Liberty shoots more 3-pointers.....	4-1
When opponent shoots more 3-pointers	14-4
When same amount of 3-pointers shot.....	0-0
When Liberty shoots more free throws	16-1
When opponent shoots more free throws.....	2-4
When same number of free throws taken.....	0-0
When opponent shoots 50% or better (FG).....	0-1
When opponent shoots less than 50% (FG).....	18-4
When Liberty has more turnovers	7-3
When opponent has more turnovers	9-2
When turnovers are the same	2-0
When Liberty blocks more shots	10-2
When opponent blocks more shots	4-2
When blocks are the same	4-1
When Liberty has more steals	14-4
When opponent has more steals.....	3-1
When steals are the same.....	1-0
When Liberty bench outscores opponent... ..	12-1
When opponent bench outscores Liberty	6-4
When both benches score the same	0-0
When Liberty scores 50 or fewer points	0-1
When Liberty scores 51-60 points	5-2
When Liberty scores 61-70 points	6-2
When Liberty scores 71-80 points	4-0
When Liberty scores 81 or more points.....	3-0
When the game is decided by 1-5 points	0-2
When the game is decided by 6-10 points	1-3
When the game is decided by 11+ points.....	17-0
November Games	5-0
December Games	2-3
January Games	8-1
February Games.....	3-1
March Games	0-0
Sunday	0-0
Monday	5-1
Tuesday.....	3-3
Wednesday.....	0-0
Thursday.....	1-0
Friday.....	2-0
Saturday	7-1
When wearing white uniforms	11-2
When wearing red uniforms.....	2-0
When wearing blue uniforms.....	5-3

All-Time Winningest Coaches

Through 10 seasons at Liberty, head coach Carey Green remains in elite company. He ranks as the ninth-winningest NCAA Division I women's basketball coach of all time, entering the 2009-10 campaign with a .755 career winning percentage. Here is a look at the top 15 coaches on the all-time list.

Coach, Team(s)	Yrs.	Won	Lost	Pct.
1) Leon Barmore, Louisiana Tech	20	576	87	.867
2) Geno Auriemma, Connecticut	24	696	122	.851
3) Pat Summitt, Tennessee	35	1,005	193	.839
4) Tara VanDerveer, Idaho, Ohio St., Stanford	30	757	193	.797
5) Bill Sheahan, Mt. St. Mary's	17	372	104	.782
6) Robin Selvig, Montana	31	725	204	.780
7) Gail Goestenkors, Duke, Texas	17	439	124	.780
8) Wes Moore, Maryville, F. Marion, Chattanooga	20	466	132	.779
9) Carey Green, Liberty	10	237	77	.755
10) Andy Landers, Georgia	30	725	239	.752
11) Marsha Sharp, Texas Tech	24	571	189	.751
12) C. Vivian Stringer, Cheyney, Iowa, Rutgers	38	825	280	.747
13) Jody Conradt, Sam Houston St., UTA, Texas	38	900	309	.744
14) Sylvia Hatchell, F. Marion, North Carolina	34	812	282	.742
15) Van Chancellor, Mississippi, LSU	21	489	171	.741

Longest-Tenured Assistant Coaches

The 2009-10 season is Heather Stephens' seventh campaign as an assistant coach on Carey Green's coaching staff. This season, she snapped a tie with Jeri (Wiley) Porter as the longest-tenured assistant coach in Liberty women's basketball history. Porter is now the head coach at George Mason.

The Lady Flames have gone 164-50 and won five Big South titles during Stephens' tenure and made the "Sweet 16" of the 2005 NCAA Tournament.

Same Number, New Face

A new Lady Flame is wearing No. 40 this year, after Megan Frazee donned the number for the last four seasons. Among many other accomplishments and accolades, Frazee graduated as the No. 2 scorer (1,883 points) and No. 3 rebounder (951 rebounds) in program history, leaving some very big shoes to fill.

Liberty's new No. 40, Devon Brown, has worn the number proudly so far. The redshirt freshman from Waynesboro, Va. is averaging a Big South-high 16.7 ppg and 8.8 rpg, pacing the Lady Flames in both categories. No freshman has finished the year as the conference's leading scorer since Liberty's Elena Kisseleva in 1996-97.

Tallest Since Feenstra

Carra Coy, one of three new freshmen on this year's team, stands 6-6. That makes the Summerville, S.C., native the tallest Lady Flame since 6-8 Katie Feenstra graduated after the 2004-05 campaign.

International Flavor

Freshman Jelena Antic hails from Skopje, Macedonia and sophomore Tolu Omotola was born in London, England, giving Liberty international players on its roster for the 16th consecutive season. The last time the Lady Flames' roster consisted solely of American-born players was the 1993-94 campaign. Every Carey Green-coached team at Liberty has featured at least one international player.

Local Flavor

Even though Jelena Antic was born in Macedonia, she played high school basketball at Liberty Christian Academy in Lynchburg, Va. She is one of four current Lady Flames who attended high school within 70 miles of the Liberty campus, joining Kylee Beecher (Hidden Valley), Devon Brown (Waynesboro) and Brittany Campbell (Brookville).

Top 50 Scorers in Liberty History

1. Elena Kisseleva	2,154
2. Megan Frazee	1,883
3. Katie Feenstra	1,845
4. Sharon Wilkerson	1,733
5. Sarah Wilkerson	1,331
6. Ginny Holloway	1,180
7. Sharon Snodgrass	1,169
8. Kristal Tharp	1,161
9. Moriah Frazee	1,147
10. Pam Wilder	1,120
11. Brenda Gunsallus	1,078
12. Cynthia Thomson	1,055
13. Dawn Coleman	908
14. Daina Staugaitiene	846
15. Sandra Bridges	822
16. Reggie Gomes	810
17. Kristi Mercer	809
18. Lil Cooper	808
19. Michelle Fricke	803
20. Stacey White	801
21. Malynda Keck	792
22. Sheila Ford	761
23. Pam Stanfield	752
24. Michelle Wyms	748
25. Sharon Freet	727
26. Jeri Wiley	717
27. Annetta Paraham	705
28. Trish Harris	697
29. Allyson Fasnacht	672
30. Courtney Watkins	669
31. Rachel Hammond	663
32. Harriett Blair	651
33. Meribeth Feenstra	628
34. Monique Leonard	624
35. Rachel Young	610
36. Kristina Palaimaite	600
37. Carla Weaver	594
38. Theresa Bream	589
39. Anna Barrington	579
40. Molly Frazee	571
41. Missy Roberts	560
42. Erin Wall	551
43T. Beth Ralph	547
43T. Irene Sloof	547
45. Angie Johnson	545
46. Kathy Wooten	543
47. Stephanie Walker	524
48. Jennifer Fairfax	513
49. Trena Criss	509
50. Avery Warley	502
Other Current Players:	
Amber Mays	440
Rachel McLeod	387
Devon Brown	384

Gaining Some National Recognition

Liberty earned a single vote in the most recent ESPN/USA Today Coaches Top 25 Poll, released on Dec. 8, marking the second straight week the Lady Flames received a vote.

Liberty also collected one vote in the AP Top 25 Poll, released on Nov. 30.

Turning Up the Heat in the Furnace

The 2009-10 campaign is the 18th season the Liberty women's basketball team has called the Vines Center its full-time home. The "Furnace" has served as a favorable venue for the Lady Flames over the years. Liberty is 197-53 (.788) all-time at the Vines Center, including 10-2 last season.

The Lady Flames are 9-2 to start this year's 15-game home schedule and are 105-11 in their last 116 home games, dating back to the 2001-02 season.

Corralling the Caroms

Liberty has ranked among the nation's top five teams in rebounding margin for six consecutive seasons, including a No. 2 listing in 2008-09. Even though two of the top three rebounders from last year's squad graduated, the Lady Flames have hit the boards hard again this season.

Liberty has won the rebounding battle in 22 of its first 23 games this season, by a nation-high average of 15.0 boards per contest. Leading the way are redshirt freshman Devon Brown (8.8 rpg) and redshirt sophomore Avery Warley (8.4 rpg).

Lack of Overtime

Liberty has played only one overtime game in its last 202 outings, a 64-62 setback at High Point on Jan. 20, 2007. Since that contest at the Millis Center, the Lady Flames have played 101 consecutive games without needing extra time. No players on Liberty's current roster have competed in an overtime game with the Lady Flames.

The Lady Flames' most recent overtime victory came on Jan. 6, 2004, when Liberty defeated American, 76-72, on the road in double overtime.

Liberty's most recent overtime contest at the Vines Center was a memorable one. The Lady Flames defeated Virginia, 77-69, in overtime on Nov. 26, 2002, to claim their first-ever win over the Cavaliers. It also marked Liberty's first win over a ranked opponent, as Virginia entered the game with a No. 25 national ranking.

Big Shoes to Fill

Seven seniors graduated from last year's Liberty team, which went 24-9 and won its second consecutive Big South title. Alexandria Bream, Megan Frazee, Molly Frazee, Moriah Frazee, Rachel Hammond, Rebecca Lightfoot and Jessica Nelson accounted for 57.0 percent of the Lady Flames' points and 41.7 percent of the team's rebounds in 2008-09.

Headlining the group was Megan Frazee, who claimed the Big South Player of the Year and Big South Championship MVP awards.

Youth will be Served

Underclassmen have stepped up to fill the void left by the seven seniors who graduated from the 2008-09 Liberty roster. Through the first 23 games of the 2009-10 campaign, the Lady Flames' freshmen and sophomores are accounting for 72.7 percent of the team's points and 74.7 percent of Liberty's rebounds.

The Lady Flames' top five rebounders are all either freshmen or sophomores, as are four of their top five scorers.

There is Only One

Starting point guard Amber Mays is the only senior on this year's team roster. Liberty has not had so few seniors since the 2005-06 Lady Flames played the season without a single senior.

Mays has played well during her final collegiate campaign, leading the Lady Flames in assists (4.4 apg) and steals (2.4 apg), while ranking second in field goal percentage (.538) and third in scoring (8.5 ppg).

Top 50 Rebounders in Liberty History

1. Katie Feenstra	1,033
2. Sharon Snodgrass	1,026
3. Megan Frazee	951
4. Elena Kisseleva	876
5. Carla Weaver	859
6. Sharon Wilkerson	625
7. Moriah Frazee	601
8. Sharon Freet	590
9. Kristina Palaimaite	586
10. Pam Stanfield	583
11. Lil Cooper	578
12. Annetta Paraham	556
13. Meribeth Feenstra	547
14. Theresa Bream	536
15. Jennifer Fairfax	533
16T. Wendy Johnson	532
16T. Malynda Keck	532
18. Pam Wilder	529
19. Kathy Wooten	504
20. Michelle Fricke	500
21. Helen Gomes	493
22. Trish Harris	484
23. Flori Willie	478
24. Michelle Wyrms	472
25. Kristal Tharp	466
26. Stacey White	456
27. Lynn Beardslee	450
28. Avery Warley	449
29. Karolina Piotrkiewicz	445
30. Sarah Wilkerson	442
31. Erin Wall	423
32T. Ginny Holloway	420
32T. Daina Staugaitiene	420
34. Dawn Coleman	405
35. Jayne Mottershead	401
36. Sheila Ford	395
37. Angie Johnson	389
38. Trena Criss	370
39. Erma Williams	357
40. Rebecca Lightfoot	351
41. Courtney Watkins	327
42. Crystal Peace	320
43. Molly Frazee	319
44. Monique Leonard	315
45. Harriett Blair	310
46. Reggie Gomes	308
47. Jamie Feagin	303
48. Rachel Young	301
49. Roli-Ann Nikagbatse	296
50T. Rachel Hammond	287
50T. Beth Ralph	287

Other Current Players:

Kylee Beecher	236
Devon Brown	202
Rachel McLeod	180

A Tale of Two Halves

Liberty has regularly stepped up its level of play during the second half this season. The Lady Flames are outscoring opponents by an average score of 35.9-24.9 during the final 20 minutes of play, thus far this season.

Liberty is shooting .504 from the field after halftime, while limiting opponents to a .323 second-half field goal percentage.

Furious Comeback

The Lady Flames fell behind Navy, 20-4, 7:56 into the Navy Classic championship game on Nov. 21. Liberty then outscored the host Midshipmen, 51-23, during the remainder of the game to claim an improbable 55-43 victory.

It was the Lady Flames' largest comeback since Nov. 27, 2001, in a matchup with VCU at the Vines Center. The Rams owned a 38-22 advantage with 18:41 remaining in the second half, before the Lady Flames rallied for a 65-60 victory.

Furious Comeback, The Sequel

Liberty trailed host Coastal Carolina, 28-18, with 17 minutes remaining in their game on Jan. 25. The Lady Flames then outscored the Chanticleers by a 39-10 count the rest of the way, closing out their 57-38 with a game-ending 24-2 run.

Darlings of Defense

Strong defense has been a staple of all Carey Green-coached teams at Liberty, but this year's team has been one of his best defensive squads. Below is a comparison between the 2009-10 Lady Flames' defensive statistics and the existing school records.

Statistic: 2009-10 average (school record)

Opponent Points per Game: 47.6 ppg (52.6 ppg in 2008-09)

Opponent Field Goal Percentage: .333 (.328 in 2004-05)

Steals: 259/11.3 per game (347/11.2 per game in 1999-2000)

Warley Wins

Redshirt sophomore forward Avery Warley averaged 16.5 ppg and 14.0 rpg as Liberty went 2-0 on its annual South Carolina "Beach Trip." As a result, she earned the first Big South Player of the Week award of her career on Jan. 26.

Antic Repeats

Jelena Antic claimed her second consecutive Big South Freshman of the Week certificate on Jan. 19, after averaging 13.3 ppg and 5.7 rpg in a trio of Liberty victories.

She is the first Lady Flame to win back-to-back Big South Freshman of the Week honors since Feb. 12 and 19, 2002, when Kristal Tharp accomplished the feat.

Freshman of the Week

LaKendra Washington's 21-point, four-steal performance at Lafayette on Nov. 28 was recognized by the Big South Conference on Dec. 1. The freshman guard was named the Big South Freshman of the Week, marking the second consecutive week a Liberty rookie was honored by the Big South.

First Since Frazee

After averaging 21.0 ppg and 10.7 rpg during Liberty's 3-0 week, Devon Brown was honored as Big South Player of the Week on Nov. 24. She became the first Lady Flames freshman to win the award since Megan Frazee captured it twice during her rookie season (Dec. 5, 2005 & Jan. 16, 2006).

National Statistical Rankings

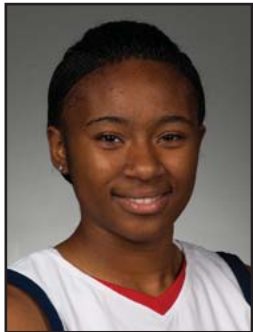
Through the contests of Feb. 14, the Lady Flames were ranked among the NCAA's top 20 teams in seven statistical categories. At that juncture, Liberty sat No. 1 in rebound margin (+15.2), No. 2 in scoring defense (49.0 ppg), No. 4 in field goal percentage (.478), No. 5 in field goal percentage defense (.342), No. 9 in three-point field goal percentage defense (.265), No. 13 in scoring margin (+17.6) and No. 20 in steals per game (11.2 spg).

Liberty's 2009-10 Starting Lineups

Game	Date	Opponent	Result	Guard	Guard	Guard	Forward	Forward	Record
1	Nov. 13	WSSU	W, 71-26	Mays	McLeod	Brown	Beecher	Warley	1-0
2	Nov. 17	UNCG	W, 60-42	Mays	McLeod	Brown	Beecher	Warley	2-0
3	Nov. 20	Tulane	W, 63-52	Mays	McLeod	Brown	Beecher	Warley	3-0
4	Nov. 21	Navy	W, 55-43	Mays	McLeod	Brown	Beecher	Warley	4-0
5	Nov. 28	Lafayette	W, 90-55	Mays	McLeod	Brown	Beecher	Warley	5-0
6	Dec. 1	JMU	L, 50-60	Mays	McLeod	Brown	Beecher	Warley	5-1
7	Dec. 5	Glennville St.	W, 86-45	Mays	McLeod	Brown	Beecher	Warley	6-1
8	Dec. 15	Auburn	L, 64-70	Mays	McLeod	Brown	Beecher	Warley	6-2
9	Dec. 28	Cornell	W, 70-40	Mays	McLeod	Brown	Antic	Warley	1-0
10	Dec. 29	Virginia	L, 54-63	Mays	McLeod	Brown	Antic	Warley	1-1
11	Jan. 2	G.-Webb	L, 65-70	Mays	McLeod	Brown	Antic	Warley	1-2
12	Jan. 5	N.C. A&T	W, 57-51	Mays	McLeod	Brown	Antic	Warley	2-2
13	Jan. 9	Winthrop	W, 67-38	Mays	McLeod	Brown	Antic	Warley	3-2
14	Jan. 12	Longwood	W, 78-55	Mays	McLeod	Brown	Antic	Warley	4-2
15	Jan. 16	Presbyterian	W, 73-27	Mays	McLeod	Brown	Antic	Warley	5-2
16	Jan. 18	UNCA	W, 82-40	Mays	McLeod	Brown	Antic	Warley	6-2
17	Jan. 23	CSU	W, 65-52	Mays	McLeod	Brown	Beecher	Warley	7-2
18	Jan. 25	Coastal Car.	W, 57-38	Mays	McLeod	Brown	Beecher	Warley	8-2
19	Jan. 30	High Point	W, 75-62	Mays	McLeod	Brown	Beecher	Warley	9-2
20	Feb. 1	Radford	W, 63-45	Mays	McLeod	Brown	Beecher	Warley	10-2
21	Feb. 4	N.C. Central	W, 64-44	Mays	McLeod	Brown	Beecher	Warley	11-2
22	Feb. 8	G.-Webb	L, 56-59	Mays	McLeod	Brown	Beecher	Warley	11-3
23	Feb. 15	Winthrop	W, 52-18	Mays	McLeod	Brown	Beecher	Warley	12-3

Miscellaneous Stats

Date	Opponent	LU Result	LU Big				Opp Big			LC	LU in			Opp in		Tied		Paint		Off TOs		2nd Ch		Bench	
			Lead	Lead	Ties	LC	Lead	Lead	Tied		LU	Opp	Tied	LU	Opp	LU	Opp	LU	Opp	LU	Opp	LU	Opp		
Nov. 13	Winston-Salem State	W, 71-26	45	0	0	0	38:11	0:00	1:49	38	12	35	10	13	7	18	15								
Nov. 17	UNC Greensboro	W, 60-42	19	2	1	1	35:17	0:18	4:25	40	10	18	14	9	9	10	17								
Nov. 20	Tulane	W, 63-52	20	2	1	1	37:33	1:16	1:11	34	18	23	18	9	2	11	9								
Nov. 21	Navy	W, 55-43	12	16	0	1	12:24	26:56	0:40	26	12	16	12	16	6	8	11								
Nov. 28	Lafayette	W, 90-55	36	0	0	0	39:41	0:00	0:19	64	16	38	22	23	6	34	10								
Dec. 1	James Madison	L, 50-60	2	15	1	1	1:53	35:58	2:09	30	24	10	12	13	12	6	19								
Dec. 5	Glennville State	W, 86-45	42	0	0	0	39:56	0:00	0:04	64	10	19	17	15	16	34	20								
Dec. 15	Auburn	L, 64-70	2	14	2	4	0:54	37:50	1:16	42	20	16	11	6	16	8	25								
Dec. 28	Cornell	W, 70-40	36	0	0	0	39:48	0:00	0:12	44	6	22	12	15	6	24	9								
Dec. 29	No. 21/23 Virginia	L, 54-63	6	11	6	17	15:09	21:19	3:32	36	28	14	35	14	7	16	21								
Jan. 2	Gardner-Webb	L, 65-70	0	13	4	0	0:00	37:52	2:08	34	20	13	21	10	5	20	17								
Jan. 5	North Carolina A&T	W, 57-51	14	2	1	2	37:12	1:21	1:27	32	18	21	20	17	0	9	7								
Jan. 9	Winthrop	W, 67-38	35	7	2	3	30:52	5:41	3:27	34	12	29	8	10	2	25	21								
Jan. 12	Longwood	W, 78-55	24	0	0	0	39:24	0:00	0:36	54	18	27	24	19	11	19	26								
Jan. 16	Presbyterian	W, 73-27	49	0	0	0	39:45	0:00	0:15	38	12	39	6	7	4	21	12								
Jan. 18	UNC Asheville	W, 82-40	46	0	2	0	37:08	0:00	2:52	38	12	33	12	23	11	33	11								
Jan. 23	Charleston Southern	W, 65-52	18	0	0	0	39:56	0:00	0:04	48	6	13	19	16	7	9	18								
Jan. 25	Coastal Carolina	W, 57-38	19	10	5	7	17:01	17:44	5:15	20	8	25	6	18	5	9	6								
Jan. 30	High Point	W, 75-62	13	9	10	11	13:29	20:16	6:15	42	22	16	9	16	2	8	21								
Feb. 1	Radford	W, 63-45	18	2	2	1	36:57	1:12	1:51	36	12	27	13	10	14	7	17								
Feb. 4	N.C. Central	W, 64-44	20	0	0	0	39:08	0:00	0:52	42	22	17	13	20	8	21	17								
Feb. 8	Gardner-Webb	L, 56-59	9	6	2	8	26:46	10:47	2:27	34	30	18	15	15	5	9	11								
Feb. 15	Winthrop	W, 52-18	34	0	0	0	38:42	0:00	1:18	30	8	19	7	11	0	20	13								



1
LaKendra
Washington
5-8 Freshman Guard
Milwaukee, Wis.
The Hope School

Season/Career Highs

Points - 21
at Lafayette (11-28-09)
FG Made - 9
at Lafayette (11-28-09)
FG Attempts - 12 (Two times)
Most recently, at Lafayette (11-28-09)
3FG Made - 2 (Three times)
Most recently, vs. NCCU (02-04-10)
3FG Attempts - 6
vs. Winston-Salem State (11-13-09)
FT Made - 2 (Three times)
Most recently, at Lafayette (11-28-09)
FT Attempts - 4 (Two times)
Most recently, at Lafayette (11-28-09)
Rebounds - 5 (Three times)
Most recently, at Virginia (12-29-09)
Assists - 2 (Four times)
Most recently, vs. NCCU (02-04-10)
Steals - 5
vs. Winston-Salem State (11-13-09)
Blocks - 1 (Three times)
Most recently, vs. NCCU (02-04-10)

2009-10 Game-By-Game Statistics

OPPONENT	DATE	MIN	FG-FGA	3FG-FGA	FT-FTA	OFF-DEF-TOT	A	TO	BLK	STL	PTS
Winston-Salem St.	11-13-09	22	4-12	1-6	0-0	0-2-2	1	3	0	5	9
UNC Greensboro	11-17-09	9	0-2	0-2	2-2	0-0-0	0	0	0	1	2
Tulane	11-20-09	10	1-2	0-1	0-0	0-1-1	0	2	1	0	2
Navy	11-21-09	15	2-3	0-0	2-4	0-4-4	0	1	0	0	6
Lafayette	11-28-09	26	9-12	1-2	2-4	0-0-0	2	1	0	4	21
James Madison	12-01-09	8	1-4	0-0	0-0	1-0-1	0	0	0	0	2
Glenville St.	12-05-09	20	4-9	0-0	0-0	1-4-5	2	5	0	2	8
Auburn	12-15-09	11	1-3	0-1	0-0	0-1-1	0	0	0	0	2
Cornell	12-28-09	21	4-10	0-3	1-2	1-4-5	2	3	1	2	9
Virginia	12-29-09	15	2-4	0-0	1-1	3-2-5	1	3	0	2	5
Gardner-Webb	01-02-10	7	0-2	0-0	0-0	0-0-0	0	0	0	1	0
N.C. A&T	01-05-10	14	0-4	0-1	0-0	1-1-2	0	2	0	0	0
Winthrop	01-09-10	17	2-5	1-2	0-0	1-0-1	1	1	0	3	5
Longwood	01-12-10	8	0-2	0-2	1-2	2-0-2	1	4	0	0	1
Presbyterian	01-16-10	20	3-5	0-2	0-0	1-2-3	0	5	0	2	6
UNC Asheville	01-18-10	16	2-6	2-4	0-3	1-0-1	0	2	0	4	6
Charleston So.	01-23-10	13	2-3	0-1	0-0	0-1-1	0	0	0	1	4
Coastal Carolina	01-25-10	12	2-3	2-2	1-2	0-1-1	0	0	0	0	7
High Point	01-30-10	3	0-0	0-0	0-0	0-0-0	0	0	0	0	0
Radford	02-01-10	18	0-0	0-0	0-0	0-0-0	1	3	0	0	0
N.C. Central	02-04-10	21	2-3	2-3	0-0	1-1-2	2	4	1	3	6
Gardner-Webb	02-08-10	4	0-0	0-0	0-0	0-0-0	1	0	0	0	0
Winthrop	02-15-10	17	1-1	0-0	0-1	1-1-2	1	2	0	3	2

2009-10 Notes/Highlights

- Tabbed Big South Freshman of the Week on Dec. 1.
- Became Liberty's first true freshman to score 20 points in a game since Megan Frazee during the 2005-06 season, when she exploded for 21 points at Lafayette on Nov. 28.
- Has made six of her last 10 triples, after making only three of 22 three-point attempts during the season's first 15 games.

Career Stats

Season	GP	GS	Min	Avg	FG	FGA	Pct	3FG	3FGA	Pct	FT	FTA	Pct	ORB	DRB	TOT	Avg	Asst	TO	Blk	Stl	Pts	Avg
2009-10	23	0	327	14.2	42	95	.442	9	32	.281	10	21	.476	14	25	39	1.7	15	41	3	33	103	4.5



11

Jelena Antic

*6-2 Freshman G/F
Skopje, Macedonia
Liberty Christian Academy*

Season/Career Highs

Points - 19
vs. Longwood (01-12-10)
FG Made - 8
vs. Longwood (01-12-10)
FG Attempts - 11
vs. Longwood (01-12-10)
3FG Made - 2
at Gardner-Webb (01-02-10)
3FG Attempts - 3
at Auburn (12-15-09)
FT Made - 6
vs. North Carolina A&T (01-05-10)
FT Attempts - 7
vs. North Carolina A&T (01-05-10)
Rebounds - 10 (Two times)
Most recently, vs. Longwood (01-12-10)
Assists - 4
vs. North Carolina A&T (01-05-10)
Steals - 3 (Two times)
Most recently, vs. Presby. (01-16-10)
Blocks - 1 (Two times)
Most recently, vs. N.C. A&T (01-05-10)

2009-10 Game-By-Game Statistics

OPPONENT	DATE	MIN	FG-FGA	3FG-FGA	FT-FTA	OFF-DEF-TOT	A	TO	BLK	STL	PTS
Winston-Salem St.	11-13-09					Did not play					
UNC Greensboro	11-17-09					Did not play					
Tulane	11-20-09					Did not play					
Navy	11-21-09	18	0-4	0-0	0-1	4-1-5	3	1	0	0	0
Lafayette	11-28-09	23	2-5	0-0	0-1	2-2-4	2	2	0	3	4
James Madison	12-01-09	12	0-3	0-1	1-2	0-4-4	0	2	0	0	1
Glenville St.	12-05-09	24	5-8	0-0	2-4	2-8-10	0	6	0	1	12
Auburn	12-15-09	23	2-8	0-3	0-0	2-1-3	1	3	0	1	4
Cornell	12-28-09	21	4-5	1-1	2-2	4-4-8	2	1	0	0	11
Virginia	12-29-09	34	2-7	1-1	0-0	3-0-3	3	1	1	0	5
Gardner-Webb	01-02-10	25	4-6	2-2	0-0	3-2-5	1	1	0	0	10
N.C. A&T	01-05-10	29	4-8	0-0	6-7	1-3-4	4	3	1	1	14
Winthrop	01-09-10	27	4-7	0-1	1-1	3-3-6	1	3	0	1	9
Longwood	01-12-10	30	8-11	0-0	3-5	5-5-10	2	5	0	2	19
Presbyterian	01-16-10	24	7-7	0-0	0-0	1-2-3	1	3	0	3	14
UNC Asheville	01-18-10	18	3-5	1-1	0-0	4-0-4	0	3	0	0	7
Charleston So.	01-23-10					Did not play					
Coastal Carolina	01-25-10					Did not play					
High Point	01-30-10					Did not play					
Radford	02-01-10					Did not play					
N.C. Central	02-04-10					Did not play					
Gardner-Webb	02-08-10					Did not play					
Winthrop	02-15-10					Did not play					

2009-10 Notes/Highlights

- Won her second consecutive Big South Freshman of the Week award on Jan. 19, after contributing 13.3 ppg and 5.7 rpg, while shooting 78.3 percent (18-of-23) from the field, during Liberty's 3-0 week.
- Liberty's first player to win consecutive Big South Freshman of the Week honors since Kristal Tharp did so Feb. 12 and 19, 2002.
- Previously named Big South Freshman of the Week on Jan. 12, after posting 11.0 ppg, 5.0 rpg and 2.5 apg during wins over North Carolina A&T and Winthrop.
- Made her first appearance in the starting lineup, Dec. 28 versus Cornell.
- Has made 13 of her last 15 field goal attempts, dating back to the second half of the Longwood game (Jan. 12).
- Has connected on five of her last six three-pointers, dating back to a Dec. 28 victory over Cornell.

Career Stats

Season	GP	GS	Min	Avg	FG	FGA	Pct	3FG	3FGA	Pct	FT	FTA	Pct	ORB	DRB	TOT	Avg	Asst	TO	Blk	Stl	Pts	Avg
2009-10	13	8	308	23.7	45	84	.536	5	10	.500	15	23	.652	34	35	69	5.3	20	34	2	12	110	8.5



12

Danika Dale

*6-1 Sophomore G/F
Fort Hood, Texas
Shoemaker HS*

Season Highs

Points - 15

vs. N.C. Central (02-04-10)

FG Made - 5

vs. N.C. Central (02-04-10)

FG Attempts - 8

at Winthrop (02-15-10)

3FG Made - 1 (Five times)

Most recently, vs. G.-Webb (02-08-10)

3FG Attempts - 3 (Two times)

Most recently, vs. Presby. (01-16-10)

FT Made - 5

vs. N.C. Central (02-04-10)

FT Attempts - 8

vs. N.C. Central (02-04-10)

Rebounds - 9

vs. Glenville State (12-05-09)

Assists - 3 (Three times)

Most recently, vs. Winthrop (01-09-10)

Steals - 3 (Two times)

Most recently, vs. Glen. St. (12-05-09)

Blocks - 2 (Four times)

Most recently, at Radford (02-01-10)

Career Highs

Points - 15

vs. N.C. Central (02-04-10)

FG Made - 5

vs. N.C. Central (02-04-10)

FG Attempts - 8

at Winthrop (02-15-10)

3FG Made - 2

vs. Auburn (12-07-08)

3FG Attempts - 3 (Four times)

Most recently, vs. Presby. (01-16-10)

FT Made - 5

vs. N.C. Central (02-04-10)

FT Attempts - 9

vs. Saint Paul's (12-13-08)

Rebounds - 9

vs. Glenville State (12-05-09)

Assists - 6

vs. Presbyterian (03-02-09)

Steals - 4

vs. Saint Paul's (12-13-08)

Blocks - 2 (Four times)

Most recently, at Radford (02-01-10)

2009-10 Game-By-Game Statistics

OPPONENT	DATE	MIN	FG-FGA	3FG-FGA	FT-FTA	OFF-DEF-TOT	A	TO	BLK	STL	PTS
Winston-Salem St.	11-13-09	23	1-5	0-2	4-4	2-5-7	3	3	2	3	6
UNC Greensboro	11-17-09	16	0-3	0-0	0-0	1-3-4	0	1	2	2	0
Tulane	11-20-09	11	0-1	0-0	0-0	1-0-1	1	1	0	2	0
Navy	11-21-09	3	0-2	0-2	0-0	1-1-2	1	0	0	0	0
Lafayette	11-28-09	15	2-2	1-1	1-2	0-4-4	1	0	0	0	6
James Madison	12-01-09	21	1-4	1-1	0-0	0-5-5	1	2	2	0	3
Glenville St.	12-05-09	19	2-3	0-0	2-3	1-8-9	3	4	0	3	6
Auburn	12-15-09	4	0-1	0-0	0-0	0-0-0	0	1	0	0	0
Cornell	12-28-09	19	2-4	0-1	1-2	3-4-7	2	0	0	0	5
Virginia	12-29-09	14	1-6	0-3	1-2	1-3-4	0	4	0	0	3
Gardner-Webb	01-02-10	12	4-5	1-2	1-2	0-0-0	1	2	0	0	10
N.C. A&T	01-05-10	10	1-2	0-0	0-1	0-2-2	1	2	0	0	2
Winthrop	01-09-10	20	2-3	0-1	0-0	2-3-5	3	1	0	1	4
Longwood	01-12-10	9	1-3	0-1	0-0	2-2-4	1	1	0	1	2
Presbyterian	01-16-10	18	2-6	1-3	0-0	2-3-5	1	3	0	1	5
UNC Asheville	01-18-10	12	2-4	0-1	1-1	2-1-3	1	2	1	1	5
Charleston So.	01-23-10	19	1-4	0-1	1-2	2-2-4	2	3	0	1	3
Coastal Carolina	01-25-10	24	0-2	0-0	0-0	0-4-4	2	1	1	2	0
High Point	01-30-10	21	0-2	0-0	2-2	1-1-2	0	0	0	1	2
Radford	02-01-10	20	1-2	0-0	0-0	0-1-1	0	1	2	1	2
N.C. Central	02-04-10	23	5-7	0-0	5-8	2-1-3	2	3	1	0	15
Gardner-Webb	02-08-10	21	2-3	1-1	1-1	0-0-0	0	1	0	0	6
Winthrop	02-15-10	23	4-8	0-0	3-3	1-4-5	0	5	0	0	11

2009-10 Notes/Highlights

-- Is averaging 10.7 ppg in her last three contests, nearly four times more than her career scoring average of 2.8 ppg.

Career Stats

Season	GP	GS	Min	Avg	FG	FGA	Pct	3FG	3FGA	Pct	FT	FTA	Pct	ORB	DRB	TOT	Avg	Asst	TO	Blk	Stl	Pts	Avg
2008-09	26	0	254	9.8	16	45	.356	3	15	.200	8	18	.444	10	33	43	1.7	21	27	2	12	43	1.7
2009-10	23	0	377	16.4	34	82	.415	5	20	.250	23	33	.697	24	57	81	3.5	26	41	11	19	96	4.2
TOTAL	49	0	631	12.9	50	127	.394	8	35	.229	31	51	.608	34	90	124	2.5	47	68	13	31	139	2.8



15

Kylee Beecher
6-4 Sophomore F
Roanoke, Va.
Hidden Valley HS

Season Highs

Points - 14 (Two times)

Most recently, vs. UNCA (01-18-10)

FG Made - 7

vs. Glenville State (12-05-09)

FG Attempts - 9

at Charleston So. (01-23-10)

3FG Made - 1

at Winthrop (02-15-10)

3FG Attempts - 2 (Three times)

Most recently, at Winthrop (02-15-10)

FT Made - 8

vs. UNC Asheville (01-18-10)

FT Attempts - 10

vs. UNC Asheville (01-18-10)

Rebounds - 9 (Three times)

Most recently, at Radford (02-01-10)

Assists - 4

vs. N.C. Central (02-04-10)

Steals - 3

at Radford (02-01-10)

Blocks - 2

at Winthrop (02-15-10)

Career Highs

Points - 18

vs. Saint Paul's (12-13-08)

FG Made - 7

vs. Glenville State (12-05-09)

FG Attempts - 10

vs. Saint Paul's (12-13-08)

3FG Made - 1 (Three times)

Most recently, at Winthrop (02-15-10)

3FG Attempts - 2 (Five times)

Most recently, at Winthrop (02-15-10)

FT Made - 8

vs. UNC Asheville (01-18-10)

FT Attempts - 10

vs. UNC Asheville (01-18-10)

Rebounds - 10 (Three times)

Most recently, vs. High Point (01-31-09)

Assists - 5

vs. Saint Paul's (12-13-08)

Steals - 3 (Three times)

Most recently, at Radford (02-01-10)

Blocks - 2

at Winthrop (02-15-10)

2009-10 Game-By-Game Statistics

OPPONENT	DATE	MIN	FG-FGA	3FG-FGA	FT-FTA	OFF-DEF-TOT	A	TO	BLK	STL	PTS
Winston-Salem St.	11-13-09	23	2-3	0-0	4-4	1-1-2	2	0	1	0	8
UNC Greensboro	11-17-09	37	4-8	0-0	3-7	2-3-5	0	4	0	0	11
Tulane	11-20-09	36	3-5	0-0	0-0	3-0-3	2	4	0	1	6
Navy	11-21-09	36	2-8	0-1	0-0	0-2-2	0	2	0	1	4
Lafayette	11-28-09	25	2-2	0-0	1-2	1-2-3	2	0	1	0	5
James Madison	12-01-09	26	2-4	0-0	0-0	3-3-6	1	1	1	2	4
Glenville St.	12-05-09	21	7-8	0-0	0-0	4-2-6	0	1	0	0	14
Auburn	12-15-09	25	1-4	0-0	5-6	0-0-0	1	0	0	2	7
Cornell	12-28-09	20	2-6	0-2	1-2	3-0-3	0	4	0	0	5
Virginia	12-29-09	21	2-4	0-1	2-2	2-0-2	0	0	0	0	6
Gardner-Webb	01-02-10	16	1-3	0-1	2-3	0-3-3	0	1	0	0	4
N.C. A&T	01-05-10	18	0-1	0-0	0-0	0-3-3	0	4	1	1	0
Winthrop	01-09-10	19	2-3	0-0	1-1	0-2-2	2	1	1	1	5
Longwood	01-12-10	25	3-5	0-0	4-5	1-5-6	1	3	0	0	10
Presbyterian	01-16-10	18	1-1	0-0	3-6	0-3-3	1	2	0	1	5
UNC Asheville	01-18-10	27	3-8	0-0	8-10	2-3-5	2	2	0	2	14
Charleston So.	01-23-10	33	4-9	0-0	2-2	4-5-9	0	2	0	2	10
Coastal Carolina	01-25-10	32	2-6	0-0	2-2	8-1-9	1	2	0	1	6
High Point	01-30-10	21	0-4	0-1	3-4	2-2-4	2	0	0	0	3
Radford	02-01-10	38	5-8	0-0	3-4	3-6-9	0	4	0	3	13
N.C. Central	02-04-10	19	1-7	0-0	1-2	1-1-2	4	3	0	0	3
Gardner-Webb	02-08-10	30	2-6	0-2	0-0	3-1-4	2	0	0	1	4
Winthrop	02-15-10	29	2-7	1-2	4-6	1-4-5	1	0	2	1	9

2009-10 Notes/Highlights

-- Ranks No. 14 in the Big South with 1.9 offensive rebounds per game.

Career Stats

Season	GP	GS	Min	Avg	FG	FGA	Pct	3FG	3FGA	Pct	FT	FTA	Pct	ORB	DRB	TOT	Avg	Asst	TO	Blk	Stl	Pts	Avg
2008-09	31	4	664	21.4	54	118	.458	2	7	.286	27	38	.711	43	97	140	4.5	19	45	2	18	137	4.4
2009-10	23	15	595	25.9	53	120	.442	1	10	.100	49	68	.721	44	52	96	4.2	24	40	7	19	156	6.8
TOTAL	54	19	1259	23.3	107	238	.450	3	17	.176	76	106	.717	87	149	236	4.4	43	85	9	37	293	5.4



21
Amber Mays
5-6 Senior Guard
Pasadena, Calif.
Pasadena HS
(State Fair CC)

Season Highs

Points - 18
at Auburn (12-15-09)
FG Made - 9
at Auburn (12-15-09)
FG Attempts - 15
vs. James Madison (12-01-09)
3FG Made - 2
vs. UNC Asheville (01-18-10)
3FG Attempts - 2
vs. UNC Asheville (01-18-10)
FT Made - 4 (Two times)
Most recently, at Coastal (01-25-10)
FT Attempts - 7
at Coastal Carolina (01-25-10)
Rebounds - 5 (Two times)
Most recently, at High Point (01-30-10)
Assists - 10
vs. Winthrop (01-09-10)
Steals - 5
vs. Longwood (01-12-10)
Blocks - 1
at Charleston So. (01-23-10)

Career Highs

Points - 18
at Auburn (12-15-09)
FG Made - 9
at Auburn (12-15-09)
FG Attempts - 15
vs. James Madison (12-01-09)
3FG Made - 2 (Two times)
Most recently, vs. UNCA (01-18-10)
3FG Attempts - 3
at Vanderbilt (12-22-08)
FT Made - 6
at UNC Asheville (01-19-09)
FT Attempts - 8
vs. UC Riverside (11-21-08)
Rebounds - 6 (Two times)
Most recently, vs. Radford (02-02-09)
Assists - 10
vs. Winthrop (01-09-10)
Steals - 8
vs. East Tennessee St. (01-13-09)
Blocks - 1 (Three times)
Most recently, at CSU (01-23-10)

2009-10 Game-By-Game Statistics

OPPONENT	DATE	MIN	FG-FGA	3FG-FGA	FT-FTA	OFF-DEF-TOT	A	TO	BLK	STL	PTS
Winston-Salem St.	11-13-09	24	3-7	0-0	1-2	0-0-0	6	1	0	4	7
UNC Greensboro	11-17-09	26	4-7	1-1	2-6	0-1-1	4	5	0	4	11
Tulane	11-20-09	33	4-6	0-0	2-4	0-2-2	3	4	0	4	10
Navy	11-21-09	30	2-5	0-0	4-5	2-0-2	5	3	0	1	8
Lafayette	11-28-09	31	4-6	0-0	3-4	1-3-4	4	5	0	4	11
James Madison	12-01-09	33	7-15	0-1	0-1	0-2-2	2	1	0	1	14
Glenville St.	12-05-09	18	2-3	0-0	1-2	0-2-2	4	2	0	2	5
Auburn	12-15-09	35	9-13	0-0	0-0	0-1-1	3	6	0	4	18
Cornell	12-28-09	20	2-2	0-0	0-0	0-2-2	8	2	0	4	4
Virginia	12-29-09	28	2-4	0-0	3-4	0-0-0	3	7	0	3	7
Gardner-Webb	01-02-10	33	4-9	0-0	2-6	3-2-5	6	4	0	1	10
N.C. A&T	01-05-10	25	2-4	0-0	0-0	0-2-2	3	2	0	1	4
Winthrop	01-09-10	22	1-3	0-0	1-2	0-0-0	10	2	0	2	3
Longwood	01-12-10	30	3-4	1-1	0-0	0-0-0	3	5	0	5	7
Presbyterian	01-16-10	21	4-6	0-0	0-0	0-2-2	6	1	0	2	8
UNC Asheville	01-18-10	23	5-8	2-2	2-2	1-0-1	5	0	0	3	14
Charleston So.	01-23-10	27	6-9	0-0	2-5	0-0-0	3	1	1	1	14
Coastal Carolina	01-25-10	31	2-6	0-1	4-7	1-1-2	2	4	0	2	8
High Point	01-30-10	26	2-6	0-0	3-4	0-5-5	2	6	0	1	7
Radford	02-01-10	24	4-6	0-0	2-4	1-0-1	7	5	0	3	10
N.C. Central	02-04-10	28	3-6	0-0	2-2	0-2-2	8	4	0	1	8
Gardner-Webb	02-08-10	34	2-7	0-1	2-6	1-0-1	3	2	0	2	6
Winthrop	02-15-10	20	0-1	0-0	1-2	0-1-1	1	4	0	0	1

2009-10 Notes/Highlights

- The only senior on Liberty's 2009-10 roster.
- Leads the Big South in assist-to-turnover ratio (1.33), while ranking No. 2 in both assists (4.4 apg) and steals (2.4 spg).
- Distributed a career-high 10 assists against Winthrop (Jan. 9), the most by a Lady Flame since Daina Staugaitiene's 10 assists versus Morgan State on Nov. 22, 2002.
- Had recorded a steal in 24 consecutive games, prior to Monday's game at Winthrop. Has notched a steal in 32 of her last 34 outings.
- In 10 Big South games this season, has totaled 45 assists and only 29 turnovers.
- First Lady Flame to distribute 100 assists in back-to-back seasons since Daina Staugaitiene did so three straight years (2002-03, 2003-04 and 2004-05).

Career Stats

Season	GP	GS	Min	Avg	FG	FGA	Pct	3FG	3FGA	Pct	FT	FTA	Pct	ORB	DRB	TOT	Avg	Asst	TO	Blk	Stl	Pts	Avg
2008-09	33	31	1002	30.4	92	201	.458	5	15	.333	56	86	.651	11	75	86	114	2	68	245	7.4		
2009-10	23	23	622	27.0	77	143	.538	4	7	.571	37	68	.544	10	28	38	1.7	101	76	1	55	195	8.5
TOTAL	56	54	1624	29.0	169	344	.491	9	22	.409	93	154	.604	21	103	124	2.2	227	190	3	123	440	7.9



23

Avery Warley
 6-3 R-Sophomore F
 Washington, D.C.
 H.D. Woodson HS

Season Highs

Points - 26
 at High Point (01-30-10)
FG Made - 9
 at High Point (01-30-10)
FG Attempts - 13 (Two times)
 Most recently, at High Point (01-30-10)
3FG Made - 0
 None
3FG Attempts - 0
 None
FT Made - 8
 at High Point (01-30-10)
FT Attempts - 11
 at High Point (01-30-10)
Rebounds - 16
 at Charleston So. (01-23-10)
Assists - 2 (Three times)
 Most recently, vs. UNCA (01-18-10)
Steals - 3
 at Gardner-Webb (01-02-10)
Blocks - 3 (Two times)
 Most recently, at Winthrop (02-15-10)

Career Highs

Points - 26
 at High Point (01-30-10)
FG Made - 9
 at High Point (01-30-10)
FG Attempts - 13 (Two times)
 Most recently, at High Point (01-30-10)
3FG Made - 0
 None
3FG Attempts - 0
 None
FT Made - 8
 at High Point (01-30-10)
FT Attempts - 11
 at High Point (01-30-10)
Rebounds - 18
 at Virginia Tech (12-30-08)
Assists - 3
 vs. Saint Paul's (12-13-08)
Steals - 3 (Three times)
 Most recently, at G.-Webb (01-02-10)
Blocks - 4 (Two times)
 Most recently, vs. Winthrop (02-16-09)

2009-10 Game-By-Game Statistics

OPPONENT	DATE	MIN	FG-FGA	3FG-FGA	FT-FTA	OFF-DEF-TOT	A	TO	BLK	STL	PTS
Winston-Salem St.	11-13-09	26	2-6	0-0	0-2	4-5-9	2	5	0	0	4
UNC Greensboro	11-17-09	19	0-0	0-0	0-0	2-5-7	0	1	0	1	0
Tulane	11-20-09	37	4-10	0-0	1-2	6-5-11	1	4	0	1	9
Navy	11-21-09	32	5-7	0-0	0-0	3-3-6	0	6	0	0	10
Lafayette	11-28-09	21	8-13	0-0	3-3	8-3-11	0	1	0	0	19
James Madison	12-01-09	29	3-7	0-0	3-4	3-4-7	2	2	0	1	9
Glenville St.	12-05-09	25	3-6	0-0	1-4	2-4-6	0	1	1	0	7
Auburn	12-15-09	33	4-6	0-0	2-2	3-3-6	0	2	0	0	10
Cornell	12-28-09	22	4-5	0-0	2-6	2-5-7	0	2	1	1	10
Virginia	12-29-09	32	6-12	0-0	0-0	3-5-8	0	5	0	2	12
Gardner-Webb	01-02-10	26	4-8	0-0	2-5	3-3-6	0	5	1	3	10
N.C. A&T	01-05-10	26	4-8	0-0	1-4	6-5-11	0	5	0	2	9
Winthrop	01-09-10	23	2-2	0-0	1-2	1-4-5	1	5	1	1	5
Longwood	01-12-10	21	6-7	0-0	0-1	3-2-5	1	1	0	0	12
Presbyterian	01-16-10	25	1-2	0-0	4-7	2-0-2	0	3	0	1	6
UNC Asheville	01-18-10	24	2-8	0-0	2-6	4-6-10	2	2	3	0	6
Charleston So.	01-23-10	30	8-12	0-0	2-4	5-11-16	0	2	0	0	18
Coastal Carolina	01-25-10	28	6-9	0-0	3-8	7-5-12	0	2	1	0	15
High Point	01-30-10	38	9-13	0-0	8-11	5-9-14	0	0	1	2	26
Radford	02-01-10	24	2-4	0-0	0-0	1-4-5	0	1	2	1	4
N.C. Central	02-04-10	34	8-11	0-0	0-1	6-5-11	0	2	1	1	16
Gardner-Webb	02-08-10	32	5-10	0-0	5-7	3-7-10	0	3	2	1	15
Winthrop	02-15-10	26	2-3	0-0	0-0	3-5-8	1	1	3	2	4

2009-10 Notes/Highlights

- Named Big South Player of the Week on Jan. 26, after averaging 16.5 ppg and 14.0 rpg during Liberty's 2-0 South Carolina "Beach Trip."
- Ranks No. 2 in the Big South in field goal percentage (.580) and offensive rebounds (3.7 rpg), No. 3 in total rebounds (8.4 rpg), No. 5 in defensive rebounds (4.7 rpg) and No. 7 in blocked shots (0.7 bpg).
- Tabbed a "Rising Star" by the Richmond Times-Dispatch.
- Named to the Marriott Cavalier Classic all-tournament team, after averaging 11.0 ppg and 7.5 rpg in two games.
- Has tallied 449 career boards, putting her in 28th place in program history.
- Has scored 502 career points, putting her in 50th place in program history.
- Became the 50th Lady Flame ever to reach the 500-point milestone Feb. 15 at Winthrop, with a putback hoop, 13:42 before halftime.
- Has notched six double-doubles this season (at Lafayette on Nov. 28; at Charleston Southern on Jan. 23; at Coastal Carolina on Jan. 25; at High Point on Jan. 30; vs. N.C. Central on Feb. 4; vs. Gardner-Webb on Feb. 8) and eight in her career.
- Has finished with double-doubles in five of her last seven outings, averaging 14.0 ppg and 10.9 rpg during the stretch.
- Posted a double-double at High Point (Jan. 30) during the second half alone, recording 10 points and 10 rebounds after intermission.

Career Stats

Season	GP	GS	Min	Avg	FG	FGA	Pct	3FG	3FGA	Pct	FT	FTA	Pct	ORB	DRB	TOT	Avg	Asst	TO	Blk	Stl	Pts	Avg
2008-09	33	33	832	25.2	112	179	.626	0	0	.000	42	81	.519	85	171	256	7.8	11	76	47	23	266	8.1
2009-10	23	23	633	27.5	98	169	.580	0	0	.000	40	79	.506	85	108	193	8.4	10	61	17	20	236	10.3
TOTAL	56	56	1465	26.2	210	348	.603	0	0	.000	82	160	.513	170	279	449	8.0	21	137	64	43	502	9.0



25
Dymond Morgan
5-7 Junior Guard
Lynwood, Calif.
Lynwood HS
(Midland College)

Season/Career Highs

Points - 11
vs. Winthrop (01-09-10)
FG Made - 4
vs. Winthrop (01-09-10)
FG Attempts - 7 (Two times)
Most recently, at Winthrop (02-15-10)
3FG Made - 2
vs. Winthrop (01-09-10)
3FG Attempts - 3 (Two times)
Most recently, at Winthrop (02-15-10)
FT Made - 3 (Two times)
Most recently, at Radford (02-01-10)
FT Attempts - 4 (Two times)
Most recently, at Radford (02-01-10)
Rebounds - 7
vs. Glenville State (12-05-09)
Assists - 7
vs. Glenville State (12-05-09)
Steals - 5
vs. Presbyterian (01-16-10)
Blocks - 0
None

2009-10 Game-By-Game Statistics

OPPONENT	DATE	MIN	FG-FGA	3FG-FGA	FT-FTA	OFF-DEF-TOT	A	TO	BLK	STL	PTS
Winston-Salem St.	11-13-09	16	0-2	0-0	0-0	1-3-4	1	2	0	1	0
UNC Greensboro	11-17-09	24	3-5	0-1	0-0	1-4-5	2	2	0	1	6
Tulane	11-20-09	18	3-6	1-1	2-2	0-2-2	0	4	0	2	9
Navy	11-21-09	15	1-2	0-0	0-0	1-2-3	0	2	0	0	2
Lafayette	11-28-09	4	0-1	0-0	1-2	0-0-0	0	1	0	0	1
James Madison	12-01-09	7	0-0	0-0	0-0	0-0-0	0	1	0	0	0
Glenville St.	12-05-09	22	2-2	0-0	2-3	0-7-7	7	8	0	1	6
Auburn	12-15-09	10	1-1	0-0	0-0	0-2-2	0	0	0	1	2
Cornell	12-28-09	22	0-3	0-0	2-2	1-0-1	1	5	0	3	2
Virginia	12-29-09	12	1-2	0-0	0-0	1-0-1	0	3	0	0	2
Gardner-Webb	01-02-10	13	2-4	0-0	2-3	0-1-1	1	0	0	2	6
N.C. A&T	01-05-10	17	2-3	0-0	1-2	0-0-0	1	1	0	3	5
Winthrop	01-09-10	20	4-7	2-3	1-2	0-1-1	1	1	0	2	11
Longwood	01-12-10	15	2-6	0-1	2-2	0-3-3	3	2	0	1	6
Presbyterian	01-16-10	18	2-3	0-0	1-1	0-0-0	4	2	0	5	5
UNC Asheville	01-18-10	22	3-6	0-2	0-0	0-2-2	6	2	0	4	6
Charleston So.	01-23-10	13	0-2	0-1	2-3	0-1-1	0	3	0	0	2
Coastal Carolina	01-25-10	14	1-5	0-2	0-0	0-0-0	1	1	0	0	2
High Point	01-30-10	19	1-5	1-1	3-4	0-0-0	1	1	0	3	6
Radford	02-01-10	17	1-5	0-0	3-4	1-2-3	1	3	0	3	5
N.C. Central	02-04-10	12	0-3	0-2	0-0	1-0-1	1	1	0	0	0
Gardner-Webb	02-08-10	9	1-2	0-1	1-2	0-0-0	1	0	0	0	3
Winthrop	02-15-10	23	2-7	1-3	0-0	0-1-1	1	5	0	2	5

2009-10 Notes/Highlights

Career Stats

Season	GP	GS	Min	Avg	FG	FGA	Pct	3FG	3FGA	Pct	FT	FTA	Pct	ORB	DRB	TOT	Avg	Asst	TO	Blk	Stl	Pts	Avg
2009-10	23	0	362	15.7	32	82	.390	5	18	.278	23	32	.719	7	31	38	1.7	33	51	0	34	92	4.0



30

Brittany Campbell
6-0 R-Freshman Guard
Rustburg, Va.
Brookville HS

Career Highs

Points - 11
vs. Hartford (11-28-08)
FG Made - 4
vs. Hartford (11-28-08)
FG Attempts - 12
at James Madison (12-02-08)
3FG Made - 3
at James Madison (12-02-08)
3FG Attempts - 7
at James Madison (12-02-08)
FT Made - 3
vs. South Alabama (11-29-08)
FT Attempts - 3 (Two times)
Most recently, vs. S. Alabama (11-29-08)
Rebounds - 3 (Three times)
Most recently, at JMU (12-02-08)
Assists - 1
vs. Hartford (11-28-08)
Steals - 2
vs. South Alabama (11-29-08)
Blocks - 1
vs. South Alabama (11-29-08)

2009-10 Game-By-Game Statistics

OPPONENT	DATE	MIN	FG-FGA	3FG-FGA	FT-FTA	OFF-DEF-TOT	A	TO	BLK	STL	PTS
Winston-Salem St.	11-13-09										Did not play
UNC Greensboro	11-17-09										Did not play
Tulane	11-20-09										Did not play
Navy	11-21-09										Did not play
Lafayette	11-28-09										Did not play
James Madison	12-01-09										Did not play
Glenville St.	12-05-09										Did not play
Auburn	12-15-09										Did not play
Cornell	12-28-09										Did not play
Virginia	12-29-09										Did not play
Gardner-Webb	01-02-10										Did not play
N.C. A&T	01-05-10										Did not play
Winthrop	01-09-10										Did not play
Longwood	01-12-10										Did not play
Presbyterian	01-16-10										Did not play
UNC Asheville	01-18-10										Did not play
Charleston So.	01-23-10										Did not play
Coastal Carolina	01-25-10										Did not play
High Point	01-30-10										Did not play
Radford	02-01-10										Did not play
N.C. Central	02-04-10										Did not play
Gardner-Webb	02-08-10										Did not play
Winthrop	02-15-10										Did not play

2009-10 Notes/Highlights

-- Has missed the first 23 games of the 2009-10 season, due to a knee injury.

Career Stats

Season	GP	GS	Min	Avg	FG	FGA	Pct	3FG	3FGA	Pct	FT	FTA	Pct	ORB	DRB	TOT	Avg	Asst	TO	Blk	Stl	Pts	Avg
2008-09	5	1	104	20.8	11	31	.355	6	18	.333	7	9	.778	5	6	11	2.2	1	6	1	4	35	7.0



32

Rachel McLeod
5-10 Junior Guard
Houston, Texas
Home Schooled

Season Highs

Points - 11
vs. Presbyterian (01-16-10)
FG Made - 4 (Two times)
Most recently, vs. G.-Webb (02-08-10)
FG Attempts - 8 (Two times)
Most recently, vs. NCCU (02-04-10)
3FG Made - 2
vs. UNC Asheville (01-18-10)
3FG Attempts - 3 (Three times)
Most recently, vs. UNCA (01-18-10)
FT Made - 5
at Radford (02-01-10)
FT Attempts - 6
at Radford (02-01-10)
Rebounds - 8
at Gardner-Webb (01-02-10)
Assists - 7
vs. Glenville State (12-05-09)
Steals - 4
vs. UNC Asheville (01-18-10)
Blocks - 1
vs. Longwood (01-12-10)

Career Highs

Points - 13
at Coastal Carolina (02-21-09)
FG Made - 4 (Six times)
Most recently, vs. G.-Webb (02-08-10)
FG Attempts - 13
at Old Dominion (03-23-08)
3FG Made - 2 (Four times)
Most recently, vs. UNCA (01-18-10)
3FG Attempts - 5
at Old Dominion (03-23-08)
FT Made - 5 (Two times)
Most recently, at Radford (02-01-10)
FT Attempts - 6 (Two times)
Most recently, at Radford (02-01-10)
Rebounds - 8 (Two times)
Most recently, at G.-Webb (01-02-10)
Assists - 8
vs. High Point (03-15-08)
Steals - 4 (Two times)
Most recently, vs. UNCA (01-18-10)
Blocks - 1 (Eight times)
Most recently, vs. Longwood (01-12-10)

2009-10 Game-By-Game Statistics

OPPONENT	DATE	MIN	FG-FGA	3FG-FGA	FT-FTA	OFF-DEF-TOT	A	TO	BLK	STL	PTS
Winston-Salem St.	11-13-09	25	3-5	0-1	2-2	1-0-1	2	0	0	2	8
UNC Greensboro	11-17-09	25	1-7	0-3	0-0	0-1-1	2	3	0	2	2
Tulane	11-20-09	23	3-4	0-0	3-5	0-2-2	2	2	0	0	9
Navy	11-21-09	18	3-4	0-0	0-2	1-1-2	0	1	0	0	6
Lafayette	11-28-09	18	1-4	0-0	2-2	0-1-1	0	1	0	1	4
James Madison	12-01-09	23	3-6	0-3	2-2	0-1-1	0	4	0	1	8
Glenville St.	12-05-09	18	2-6	0-0	2-4	1-1-2	7	2	0	2	6
Auburn	12-15-09	22	0-6	0-0	2-2	0-1-1	1	1	0	0	2
Cornell	12-28-09	17	1-2	1-1	0-0	0-0-0	0	2	0	0	3
Virginia	12-29-09	19	2-2	0-0	1-1	0-2-2	0	3	0	0	5
Gardner-Webb	01-02-10	32	2-4	0-0	2-2	2-6-8	2	4	0	0	6
N.C. A&T	01-05-10	25	1-8	0-0	2-2	2-0-2	1	0	0	1	4
Winthrop	01-09-10	20	2-3	0-0	0-0	1-2-3	2	0	0	1	4
Longwood	01-12-10	27	2-6	0-0	1-2	0-2-2	4	2	1	0	5
Presbyterian	01-16-10	20	4-6	1-1	2-2	1-2-3	1	0	0	2	11
UNC Asheville	01-18-10	23	3-7	2-3	2-2	1-4-5	3	0	0	4	10
Charleston So.	01-23-10	29	0-3	0-0	3-4	1-1-2	1	1	0	0	3
Coastal Carolina	01-25-10	30	1-5	0-0	0-0	2-1-3	2	2	0	1	2
High Point	01-30-10	32	0-3	0-1	2-2	1-0-1	2	3	0	0	2
Radford	02-01-10	21	2-4	0-0	5-6	0-1-1	2	1	0	1	9
N.C. Central	02-04-10	30	3-8	0-0	0-0	2-2-4	1	1	0	0	6
Gardner-Webb	02-08-10	33	4-7	1-2	0-0	2-0-2	3	2	0	2	9
Winthrop	02-15-10	28	1-4	0-2	1-2	2-2-4	1	1	0	3	3

2009-10 Notes/Highlights

-- Scored in double figures in back-to-back games for the first time in her career, Jan. 16 vs. Presbyterian and Jan. 18 vs. UNC Asheville.

Career Stats

Season	GP	GS	Min	Avg	FG	FGA	Pct	3FG	3FGA	Pct	FT	FTA	Pct	ORB	DRB	TOT	Avg	Asst	TO	Blk	Stl	Pts	Avg
2007-08	32	0	531	16.6	50	108	.463	12	33	.364	27	41	.659	10	46	56	1.8	66	60	4	25	139	4.3
2008-09	30	5	622	20.7	39	120	.325	9	34	.265	34	45	.756	11	60	71	2.4	73	82	3	29	121	4.0
2009-10	23	23	558	24.3	44	114	.386	5	17	.294	34	44	.773	20	33	53	2.3	39	36	1	23	127	5.5
TOTAL	85	28	1711	20.1	133	342	.389	26	84	.310	95	130	.731	41	139	180	2.1	178	178	8	77	387	4.6



40

Devon Brown

*5-10 R-Freshman G
Waynesboro, Va.
Waynesboro HS*

Season/Career Highs

Points - 29

at High Point (01-30-10)

FG Made - 12

at High Point (01-30-10)

FG Attempts - 18

vs. Gardner-Webb (02-08-10)

3FG Made - 3 (Four times)

Most recently, vs. Presby. (01-16-10)

3FG Attempts - 6 (Two times)

Most recently, vs. Winthrop (01-09-10)

FT Made - 8 (Two times)

Most recently, at Radford (02-01-10)

FT Attempts - 9 (Two times)

Most recently, at Radford (02-01-10)

Rebounds - 13 (Four times)

Most recently, vs. G.-Webb (02-08-10)

Assists - 4 (Two times)

Most recently, at CSU (01-23-10)

Steals - 5

at Navy (11-21-09)

Blocks - 2 (Four times)

Most recently, at High Point (01-30-10)

2009-10 Game-By-Game Statistics

OPPONENT	DATE	MIN	FG-FGA	3FG-FGA	FT-FTA	OFF-DEF-TOT	A	TO	BLK	STL	PTS
Winston-Salem St.	11-13-09	22	11-14	3-5	1-1	4-3-7	1	2	0	0	26
UNC Greensboro	11-17-09	30	11-15	1-2	3-7	4-5-9	2	3	0	3	26
Tulane	11-20-09	32	6-13	3-4	3-6	3-9-12	1	2	2	1	18
Navy	11-21-09	33	4-13	3-5	8-9	3-8-11	2	1	0	5	19
Lafayette	11-28-09	20	8-14	1-3	0-0	2-1-3	4	2	0	1	17
James Madison	12-01-09	34	1-16	0-3	7-8	4-9-13	0	6	0	1	9
Glenville St.	12-05-09	18	8-11	0-1	4-6	2-7-9	2	1	0	0	20
Auburn	12-15-09	37	7-9	2-3	3-3	0-8-8	0	3	1	0	19
Cornell	12-28-09	23	8-14	1-3	1-3	1-5-6	1	2	1	2	18
Virginia	12-29-09	25	4-13	1-6	0-0	1-5-6	0	4	2	3	9
Gardner-Webb	01-02-10	31	2-11	1-4	4-4	3-8-11	0	2	0	3	9
N.C. A&T	01-05-10	32	6-15	1-5	4-7	4-9-13	3	3	1	2	17
Winthrop	01-09-10	23	8-16	2-6	3-3	1-5-6	1	1	0	2	21
Longwood	01-12-10	30	5-17	0-4	6-6	6-7-13	3	4	2	3	16
Presbyterian	01-16-10	21	5-8	3-5	0-0	1-4-5	3	1	1	2	13
UNC Asheville	01-18-10	25	5-10	2-4	0-0	2-6-8	2	4	1	0	12
Charleston So.	01-23-10	32	4-7	1-3	2-5	2-4-6	4	4	0	3	11
Coastal Carolina	01-25-10	29	6-16	1-3	4-4	2-8-10	1	1	1	4	17
High Point	01-30-10	39	12-17	0-3	5-8	1-10-11	2	4	2	1	29
Radford	02-01-10	32	6-12	0-3	8-9	3-8-11	1	2	0	3	20
N.C. Central	02-04-10	27	4-6	2-4	0-0	2-4-6	0	1	0	0	10
Gardner-Webb	02-08-10	37	5-18	1-4	2-2	4-9-13	1	3	0	2	13
Winthrop	02-15-10	20	7-16	1-5	0-0	3-2-5	2	2	0	1	15

2009-10 Notes/Highlights

-- Earned her second Big South Player of the Week award this season on Feb. 2, after posting 24.5 ppg and 11.0 rpg during Liberty's wins at High Point and Radford. Brown is one of two Big South players (GWU's Margaret Roundtree) to win the award multiple times this season.

-- Previously named Big South Player of the Week on Nov. 24, becoming the first Liberty freshman to capture the award since Megan Frazee (twice in 2005-06).

-- Ranks in the top 10 of seven different Big South statistical categories, including scoring (1st-16.7 ppg), defensive rebounds (1st-6.3 rpg), rebounding (2nd-8.8 rpg), field goal percentage (4th-.475), offensive rebounds (5th-2.5 rpg), free throw percentage (6th-.747) and steals (10th-1.8 spg).

-- Her 26 points versus Winston-Salem State (Nov. 13) equaled the Lady Rams' point total and were the most points by a Lady Flame in her collegiate debut since Elena Kisseleva scored 30 points versus Bluefield on Nov. 23, 1996.

-- Outscored Navy during the second half of the Navy Classic championship game (Nov. 21), 14-11. She was named the Championship Game All-Star, after tallying 19 points, 11 rebounds and a career-high five steals.

-- Posted 19 points and eight rebounds during the second half at High Point (Jan. 30), nearly matching the Panthers' second-half statistics (21 points, eight rebounds) by herself.

-- Has posted eight double-doubles this season (Nov. 20 vs. Tulane, Nov. 21 at Navy, Jan. 5 vs. North Carolina A&T, Jan. 12 vs. Longwood, Jan. 25 at Coastal Carolina, Jan. 30 at High Point, Feb. 1 at Radford and Feb. 8 vs. Gardner-Webb).

-- Has scored in double figures in 12 consecutive games.

Career Stats

Season	GP	GS	Min	Avg	FG	FGA	Pct	3FG	3FGA	Pct	FT	FTA	Pct	ORB	DRB	TOT	Avg	Asst	TO	Blk	Stl	Pts	Avg
2009-10	23	23	652	28.3	143	301	.475	30	88	.341	68	91	.747	58	144	202	8.8	36	58	14	42	384	16.7



43

Kittery Maine

6-4 Junior Forward

Bonaire, Ga.

Warner Robins HS

Career Highs

Points - 12

vs. Saint Paul's (12-13-08)

FG Made - 5

vs. Saint Paul's (12-13-08)

FG Attempts - 8

vs. Saint Paul's (12-13-08)

3FG Made - 0

None

3FG Attempts - 0

None

FT Made - 3

vs. Charleston So. (02-18-08)

FT Attempts - 4

vs. Charleston So. (02-18-08)

Rebounds - 7

vs. Saint Paul's (12-13-08)

Assists - 1 (Six times)

Most recently, vs. Radford (02-02-09)

Steals - 1 (Five times)

Most recently, vs. Winthrop (02-16-09)

Blocks - 3 (Two times)

Most recently, at W. Carolina (11-22-08)

2009-10 Game-By-Game Statistics

OPPONENT	DATE	MIN	FG-FGA	3FG-FGA	FT-FTA	OFF-DEF-TOT	A	TO	BLK	STL	PTS
Winston-Salem St.	11-13-09										Did not play
UNC Greensboro	11-17-09										Did not play
Tulane	11-20-09										Did not play
Navy	11-21-09										Did not play
Lafayette	11-28-09										Did not play
James Madison	12-01-09										Did not play
Glenville St.	12-05-09										Did not play
Auburn	12-15-09										Did not play
Cornell	12-28-09										Did not play
Virginia	12-29-09										Did not play
Gardner-Webb	01-02-10										Did not play
N.C. A&T	01-05-10										Did not play
Winthrop	01-09-10										Did not play
Longwood	01-12-10										Did not play
Presbyterian	01-16-10										Did not play
UNC Asheville	01-18-10										Did not play
Charleston So.	01-23-10										Did not play
Coastal Carolina	01-25-10										Did not play
High Point	01-30-10										Did not play
Radford	02-01-10										Did not play
N.C. Central	02-04-10										Did not play
Gardner-Webb	02-08-10										Did not play
Winthrop	02-15-10										Did not play

2009-10 Notes/Highlights

-- Has missed the first 23 games of the 2009-10 season, due to a knee injury.

Career Stats

Season	GP	GS	Min	Avg	FG	FGA	Pct	3FG	3FGA	Pct	FT	FTA	Pct	ORB	DRB	TOT	Avg	Asst	TO	Blk	Stl	Pts	Avg
2007-08	28	0	202	7.2	22	30	.733	0	0	.000	10	18	.556	13	28	41	1.5	3	18	6	3	54	1.9
2008-09	24	0	197	8.2	20	41	.488	0	0	.000	2	4	.500	17	30	47	2.0	3	12	7	2	42	1.8
TOTAL	52	0	399	7.7	42	71	.592	0	0	.000	12	22	.545	30	58	88	1.7	6	30	13	5	96	1.8



54

Carra Coy

*6-6 Freshman Forward
Summerville, S.C.
Northwood Academy*

Season/Career Highs

Points - 3 (Two times)

Most recently, vs. Cornell (12-28-09)

FG Made - 1 (Seven times)

Most recently, at Winthrop (02-15-10)

FG Attempts - 4 (Two times)

at Winthrop (02-15-10)

3FG Made - 0

None

3FG Attempts - 0

None

FT Made - 2

vs. Glenville State (12-05-09)

FT Attempts - 2 (Four times)

Most recently, at Radford (02-01-10)

Rebounds - 4 (Three times)

Most recently, at Winthrop (02-15-10)

Assists - 0

None

Steals - 1 (Two times)

Most recently, vs. NCCU (02-04-10)

Blocks - 2

vs. UNC Greensboro (11-17-09)

2009-10 Game-By-Game Statistics

OPPONENT	DATE	MIN	FG-FGA	3FG-FGA	FT-FTA	OFF-DEF-TOT	A	TO	BLK	STL	PTS
Winston-Salem St.	11-13-09	19	1-3	0-0	1-2	0-1-1	0	2	1	0	3
UNC Greensboro	11-17-09	14	1-2	0-0	0-0	1-3-4	0	0	2	0	2
Tulane	11-20-09					Did not play					
Navy	11-21-09					Did not play					
Lafayette	11-28-09	17	1-1	0-0	0-0	0-1-1	0	1	0	1	2
James Madison	12-01-09	7	0-0	0-0	0-0	1-0-1	0	1	0	0	0
Glenville St.	12-05-09	15	0-1	0-0	2-2	1-3-4	0	3	1	0	2
Auburn	12-15-09					Did not play					
Cornell	12-28-09	15	1-2	0-0	1-2	0-2-2	0	1	1	0	3
Virginia	12-29-09					Did not play					
Gardner-Webb	01-02-10	5	0-0	0-0	0-0	0-1-1	0	1	0	0	0
N.C. A&T	01-05-10	4	1-1	0-0	0-0	0-0-0	0	0	0	0	2
Winthrop	01-09-10	9	0-4	0-0	0-0	2-1-3	0	0	1	0	0
Longwood	01-12-10	5	0-0	0-0	0-1	1-0-1	0	0	0	0	0
Presbyterian	01-16-10	15	0-1	0-0	0-1	1-1-2	0	1	1	0	0
UNC Asheville	01-18-10	10	1-1	0-0	0-0	1-0-1	0	1	1	0	2
Charleston So.	01-23-10	4	0-0	0-0	0-0	0-1-1	0	1	0	0	0
Coastal Carolina	01-25-10					Did not play					
High Point	01-30-10	1	0-0	0-0	0-0	0-0-0	0	0	0	0	0
Radford	02-01-10	6	0-0	0-0	0-2	1-0-1	0	0	0	0	0
N.C. Central	02-04-10	6	0-1	0-0	0-0	0-0-0	0	0	0	1	0
Gardner-Webb	02-08-10					Did not play					
Winthrop	02-15-10	14	1-4	0-0	0-0	3-1-4	0	0	0	0	2

2009-10 Notes/Highlights

Career Stats

Season	GP	GS	Min	Avg	FG	FGA	Pct	3FG	3FGA	Pct	FT	FTA	Pct	ORB	DRB	TOT	Avg	Asst	TO	Blk	Stl	Pts	Avg
2009-10	17	0	166	9.8	7	21	.333	0	0	.000	4	10	.400	12	15	27	1.6	0	12	8	2	18	1.1

Official Basketball Box Score -- Game Totals -- Final Statistics

Liberty vs Winthrop

02-15-10 7:10 p.m. at Winthrop Coliseum--Rock Hill, SC

VISITORS: Liberty 18-5, 8-2 BSC

##	Player Name	FG-FGA	3-PT FG-FGA	FT-FTA	REBOUNDS			PF	TP	A	TO	BLK	S	MIN
					OF	DE	TOT							
15	BEECHER, Kylee.....	f 2-7	1-2	4-6	1	4	5	1	9	1	0	2	1	29
23	WARLEY, Avery.....	f 2-3	0-0	0-0	3	5	8	4	4	1	1	3	2	26
21	MAYS, Amber.....	g 0-1	0-0	1-2	0	1	1	2	1	1	4	0	0	20
32	McLEOD, Rachel.....	g 1-4	0-2	1-2	2	2	4	0	3	1	1	0	3	28
40	BROWN, Devon.....	g 7-16	1-5	0-0	3	2	5	3	15	2	2	0	1	20
01	WASHINGTON, LaKendra	1-1	0-0	0-1	1	1	2	3	2	1	2	0	3	17
12	DALE, Danika.....	4-8	0-0	3-3	1	4	5	0	11	0	5	0	0	23
25	MORGAN, Dymond.....	2-7	1-3	0-0	0	1	1	1	5	1	5	0	2	23
54	COY, Carra.....	1-4	0-0	0-0	3	1	4	1	2	0	0	0	0	14
	TEAM.....				4	3	7							
	Totals.....	20-51	3-12	9-14	18	24	42	15	52	8	20	5	12	200

TOTAL FG% 1st Half: 9-22 40.9% 2nd Half: 11-29 37.9% Game: 39.2% DEADB
 3-Pt. FG% 1st Half: 2-6 33.3% 2nd Half: 1-6 16.7% Game: 25.0% REBS
 F Throw % 1st Half: 3-3 100 % 2nd Half: 6-11 54.5% Game: 64.3% 1

HOME TEAM: Winthrop 10-15, 4-7 BSC

##	Player Name	FG-FGA	3-PT FG-FGA	FT-FTA	REBOUNDS			PF	TP	A	TO	BLK	S	MIN
					OF	DE	TOT							
03	COX, Ashley.....	f 0-3	0-3	0-0	2	2	4	0	0	0	2	0	1	15
24	RUBINO, Kaitlyn.....	f 0-7	0-2	0-0	2	1	3	1	0	1	4	0	3	23
55	WHITE, Chanel.....	c 0-2	0-0	2-4	3	2	5	5	2	0	1	2	0	17
23	HATHAWAY, Mary.....	g 0-7	0-4	1-2	0	1	1	1	1	0	2	0	0	23
30	COLE, Shanice.....	g 1-3	0-0	0-0	2	2	4	1	2	0	8	1	1	24
04	FANSLER, Jessica....	1-6	0-2	2-2	1	1	2	2	4	1	2	0	0	12
05	RYSKA, Kathi.....	1-2	0-1	3-3	0	1	1	2	5	0	0	0	0	20
13	LYONS, Lacey.....	1-3	0-1	0-0	1	2	3	0	2	0	2	0	0	13
21	FITZGERALD, Katie...	0-3	0-0	0-0	0	2	2	0	0	0	0	0	1	14
32	SCOTT, Sarah.....	0-2	0-0	0-0	0	1	1	0	0	0	3	0	0	4
33	HANKINS, Shelly....	1-3	0-1	0-0	1	0	1	1	2	0	3	0	1	13
50	HAMMICK, TaQuoia....	0-1	0-0	0-0	0	2	2	4	0	0	1	0	2	22
	TEAM.....				1	2	3							
	Totals.....	5-42	0-14	8-11	13	19	32	17	18	2	28	3	9	200

TOTAL FG% 1st Half: 3-25 12.0% 2nd Half: 2-17 11.8% Game: 11.9% DEADB
 3-Pt. FG% 1st Half: 0-7 0.0% 2nd Half: 0-7 0.0% Game: 0.0% REBS
 F Throw % 1st Half: 4-4 100 % 2nd Half: 4-7 57.1% Game: 72.7% 2

Officials: Lawson Newton (R), Kim Crabtree, Ryan Freeman

Technical fouls: Liberty-None. Winthrop-None.

Attendance: 560

Score by Periods	1st	2nd	Total
Liberty.....	23	29	- 52
Winthrop.....	10	8	- 18

Points in the paint-LIBERTY 30, WINTHROP 8. Points off turnovers-LIBERTY 19, WINTHROP 7.

2nd chance points-LIBERTY 11, WINTHROP 0. Fast break points-LIBERTY 0, WINTHROP 0.

Bench points-LIBERTY 20, WINTHROP 13. Score tied-0 times. Lead changed-0 times.

Last FG-LIBERTY 2nd-02:12, WINTHROP 2nd-11:05.

Largest lead-LIBERTY by 34 2nd-00:53, WINTHROP None.

Official Basketball Box Score -- Game Totals -- Final Statistics

Liberty vs Coastal Carolina

01-25-10 7 p.m. at Conway, S.C. (Kimbel Arena)

VISITORS: Liberty 14-4 (5-1)

##	Player Name	TOT-FG			3-PT			REBOUNDS			PF	TP	A	TO	BLK	S	MIN
		FG-FGA	FG-FGA	FT-FTA	OF	DE	TOT										
15	BEECHER, Kylee.....	f	2-6	0-0	2-2	8	1	9	1	6	1	2	0	1	32		
23	WARLEY, Avery.....	f	6-9	0-0	3-8	7	5	12	4	15	0	2	1	0	28		
21	MAYS, Amber.....	g	2-6	0-1	4-7	1	1	2	3	8	2	4	0	2	31		
32	McLEOD, Rachel.....	g	1-5	0-0	0-0	2	1	3	0	2	2	2	0	1	30		
40	BROWN, Devon.....	g	6-16	1-3	4-4	2	8	10	2	17	1	1	1	4	29		
01	WASHINGTON, LaKendra		2-3	2-2	1-2	0	1	1	1	7	0	0	0	0	12		
12	DALE, Danika.....		0-2	0-0	0-0	0	4	4	2	0	2	1	1	2	24		
25	MORGAN, Dymond.....		1-5	0-2	0-0	0	0	0	2	2	1	1	0	0	14		
	TEAM.....					2	2	4									
	Totals.....		20-52	3-8	14-23	22	23	45	15	57	9	13	3	10	200		

TOTAL FG% 1st Half: 6-24 25.0% 2nd Half: 14-28 50.0% Game: 38.5% DEADB
 3-Pt. FG% 1st Half: 1-5 20.0% 2nd Half: 2-3 66.7% Game: 37.5% REBS
 F Throw % 1st Half: 3-8 37.5% 2nd Half: 11-15 73.3% Game: 60.9% 3

HOME TEAM: Coastal Carolina 12-6 (3-3)

##	Player Name	TOT-FG			3-PT			REBOUNDS			PF	TP	A	TO	BLK	S	MIN
		FG-FGA	FG-FGA	FT-FTA	OF	DE	TOT										
40	REYNOLDS, Kendra....	f	1-4	0-1	0-0	1	0	1	1	2	1	1	2	0	21		
24	WHITE, Katie.....	c	1-4	0-0	0-0	1	3	4	3	2	0	0	3	0	30		
03	AHAUS, Katie.....	g	1-2	0-0	0-0	0	1	1	1	2	2	4	0	2	35		
12	STULL, Amanda.....	g	2-5	2-4	0-0	0	2	2	3	6	2	2	0	2	32		
21	MOSS, Sydnei.....	g	6-17	4-6	4-4	2	6	8	2	20	2	4	0	2	37		
11	GROCHOWSKI, Lauren..		0-0	0-0	0-0	0	0	0	1	0	0	0	0	1	4		
15	IRICK, Olivia.....		0-1	0-1	0-0	0	0	0	4	0	0	4	0	0	4		
22	RIVERS, Devin.....		0-1	0-0	2-2	0	3	3	0	2	0	3	0	0	19		
30	GRAMBLEY, Courtney..		1-3	0-2	0-0	0	0	0	1	2	0	0	0	0	10		
42	EPLEY, Taylor.....		0-0	0-0	0-0	0	0	0	1	0	0	1	0	0	3		
45	WEAVER, Elizabeth...		1-4	0-0	0-0	1	0	1	2	2	0	0	0	0	5		
	TEAM.....					1	1					1					
	Totals.....		13-41	6-14	6-6	5	16	21	19	38	7	20	5	7	200		

TOTAL FG% 1st Half: 6-19 31.6% 2nd Half: 7-22 31.8% Game: 31.7% DEADB
 3-Pt. FG% 1st Half: 3-6 50.0% 2nd Half: 3-8 37.5% Game: 42.9% REBS
 F Throw % 1st Half: 6-6 100 % 2nd Half: 0-0 0.0% Game: 100 % 0

Officials: Bryan Burnette, Angel Stanton, Kate Burrell

Technical fouls: Liberty-None. Coastal Carolina-None.

Attendance: 687

Score by Periods	1st	2nd	Total
Liberty.....	16	41	57
Coastal Carolina.....	21	17	38

Points in the paint-LIBERTY 20,COASTAL 8. Points off turnovers-LIBERTY 25,COASTAL 6.

2nd chance points-LIBERTY 18,COASTAL 5. Fast break points-LIBERTY 2,COASTAL 0.

Bench points-LIBERTY 9,COASTAL 6. Score tied-5 times. Lead changed-7 times.

Last FG-LIBERTY 2nd-02:23, COASTAL 2nd-01:29.

Largest lead-LIBERTY by 19 2nd-00:49, COASTAL by 10 2nd-17:06.

2009-10 Liberty Women's Basketball
 Liberty Game-by-Game Highs (as of Feb 17, 2010)
 All games

Opponent	Date	Score	WL	POINTS	REBOUNDS	ASSISTS	STEALS	BLOCKED SHOTS
WINSTON-SALEM STATE	11-13-09	71-26	W	26-BROWN, Devon	9-WARLEY, Avery	6-MAYS, Amber	5-WASHINGTON, L	2-DALE, Danika
UNC GREENSBORO	11-17-09	60-42	W	26-BROWN, Devon	9-BROWN, Devon	4-MAYS, Amber	4-MAYS, Amber	2-COY, Carra DALE, Danika
vs Tulane	11-20-09	63-52	W	18-BROWN, Devon	12-BROWN, Devon	3-MAYS, Amber	4-MAYS, Amber	2-BROWN, Devon
at Navy	11-21-09	55-43	W	19-BROWN, Devon	11-BROWN, Devon	5-MAYS, Amber	5-BROWN, Devon	None
at Lafayette	11-28-09	90-55	W	21-WASHINGTON, L	11-WARLEY, Avery	4-BROWN, Devon MAYS, Amber	4-WASHINGTON, L MAYS, Amber	1-BEECHER, Kyle
JAMES MADISON	12-01-09	50-60	L	14-MAYS, Amber	13-BROWN, Devon	2-MAYS, Amber WARLEY, Avery	2-BEECHER, Kyle	2-DALE, Danika
GLENVILLE STATE	12-05-09	86-45	W	20-BROWN, Devon	10-ANTIC, Jelena	7-MCLEOD, Rache MORGAN, Dymon	3-DALE, Danika	1-WARLEY, Avery COY, Carra
at Auburn	12-15-09	64-70	L	19-BROWN, Devon	8-BROWN, Devon	3-MAYS, Amber	4-MAYS, Amber	1-BROWN, Devon
vs Cornell	12-28-09	70-40	W	18-BROWN, Devon	8-ANTIC, Jelena	8-MAYS, Amber	4-MAYS, Amber	1-COY, Carra WARLEY, Avery BROWN, Devon WASHINGTON, L
at Virginia	12-29-09	54-63	L	12-WARLEY, Avery	8-WARLEY, Avery	3-ANTIC, Jelena MAYS, Amber	3-BROWN, Devon MAYS, Amber	2-BROWN, Devon
at Gardner-Webb	01-02-10	65-70	L	10-DALE, Danika ANTIC, Jelena MAYS, Amber WARLEY, Avery	11-BROWN, Devon	6-MAYS, Amber	3-BROWN, Devon WARLEY, Avery	1-WARLEY, Avery
NORTH CAROLINA A&T	01-05-10	57-51	W	17-BROWN, Devon	13-BROWN, Devon	4-ANTIC, Jelena	3-MORGAN, Dymon	1-BEECHER, Kyle BROWN, Devon ANTIC, Jelena
WINTHROP	01-09-10	67-38	W	21-BROWN, Devon	6-BROWN, Devon ANTIC, Jelena	10-MAYS, Amber	3-WASHINGTON, L	1-WARLEY, Avery BEECHER, Kyle COY, Carra
LONGWOOD	01-12-10	78-55	W	19-ANTIC, Jelena	13-BROWN, Devon	4-MCLEOD, Rache	5-MAYS, Amber	2-BROWN, Devon
PRESBYTERIAN COLLEGE	01-16-10	73-27	W	14-ANTIC, Jelena	5-BROWN, Devon DALE, Danika	6-MAYS, Amber	5-MORGAN, Dymon	1-BROWN, Devon COY, Carra
UNC ASHEVILLE	01-18-10	82-40	W	14-BEECHER, Kyle MAYS, Amber	10-WARLEY, Avery	6-MORGAN, Dymon	4-WASHINGTON, L MCLEOD, Rache MORGAN, Dymon	3-WARLEY, Avery
at Charleston Southern	01-23-10	65-52	W	18-WARLEY, Avery	16-WARLEY, Avery	4-BROWN, Devon	3-BROWN, Devon	1-MAYS, Amber
at Coastal Carolina	01-25-10	57-38	W	17-BROWN, Devon	12-WARLEY, Avery	2-MCLEOD, Rache MAYS, Amber DALE, Danika	4-BROWN, Devon	1-WARLEY, Avery BROWN, Devon DALE, Danika
at High Point	01-30-10	75-62	W	29-BROWN, Devon	14-WARLEY, Avery	2-MAYS, Amber BEECHER, Kyle MCLEOD, Rache BROWN, Devon	3-MORGAN, Dymon	2-BROWN, Devon
at Radford	02-01-10	63-45	W	20-BROWN, Devon	11-BROWN, Devon	7-MAYS, Amber	3-BROWN, Devon MAYS, Amber BEECHER, Kyle MORGAN, Dymon	2-WARLEY, Avery DALE, Danika
N.C. CENTRAL	02-04-10	64-44	W	16-WARLEY, Avery	11-WARLEY, Avery	8-MAYS, Amber	3-WASHINGTON, L	1-WASHINGTON, L WARLEY, Avery DALE, Danika
GARDNER-WEBB	02-08-10	56-59	L	15-WARLEY, Avery	13-BROWN, Devon	3-MAYS, Amber MCLEOD, Rache	2-MCLEOD, Rache BROWN, Devon MAYS, Amber	2-WARLEY, Avery
at Winthrop	02-15-10	52-18	W	15-BROWN, Devon	8-WARLEY, Avery	2-BROWN, Devon	3-WASHINGTON, L	3-WARLEY, Avery

2009-10 Liberty Women's Basketball
Liberty Game-by-Game Highs (as of Feb 17, 2010)
All games

Opponent	Date	Score	WL	POINTS	REBOUNDS	ASSISTS	STEALS	BLOCKED SHOTS
----------	------	-------	----	--------	----------	---------	--------	---------------

McLEOD, Rache

2009-10 Liberty Women's Basketball
Liberty Game-by-Game Points-Rebounds-Assists (as of Feb 17, 2010)
All games

Opponent	Date	Score	WL	01	11	12	15	21	23	25	32	40
				WASHINGTON	ANTIC,JEL	DALE,DANI	BEECHER,K	MAYS,AMBE	WARLEY,AV	MORGAN,DY	MCLEOD,RA	BROWN,DEV
WINSTON-SALEM STATE	11-13-09	71-26	W	9- 2- 1	DNP	6- 7- 3	8- 2- 2	7- 0- 6	4- 9- 2	0- 4- 1	8- 1- 2	26- 7- 1
UNC GREENSBORO	11-17-09	60-42	W	2- 0- 0	DNP	0- 4- 0	11- 5- 0	11- 1- 4	0- 7- 0	6- 5- 2	2- 1- 2	26- 9- 2
vs Tulane	11-20-09	63-52	W	2- 1- 0	DNP	0- 1- 1	6- 3- 2	10- 2- 3	9-11- 1	9- 2- 0	9- 2- 2	18-12- 1
at Navy	11-21-09	55-43	W	6- 4- 0	0- 5- 3	0- 2- 1	4- 2- 0	8- 2- 5	10- 6- 0	2- 3- 0	6- 2- 0	19-11- 2
at Lafayette	11-28-09	90-55	W	21- 0- 2	4- 4- 2	6- 4- 1	5- 3- 2	11- 4- 4	19-11- 0	1- 0- 0	4- 1- 0	17- 3- 4
JAMES MADISON	12-01-09	50-60	L	2- 1- 0	1- 4- 0	3- 5- 1	4- 6- 1	14- 2- 2	9- 7- 2	0- 0- 0	8- 1- 0	9-13- 0
GLENVILLE STATE	12-05-09	86-45	W	8- 5- 2	12-10- 0	6- 9- 3	14- 6- 0	5- 2- 4	7- 6- 0	6- 7- 7	6- 2- 7	20- 9- 2
at Auburn	12-15-09	64-70	L	2- 1- 0	4- 3- 1	0- 0- 0	7- 0- 1	18- 1- 3	10- 6- 0	2- 2- 0	2- 1- 1	19- 8- 0
vs Cornell	12-28-09	70-40	W	9- 5- 2	11- 8- 2	5- 7- 2	5- 3- 0	4- 2- 8	10- 7- 0	2- 1- 1	3- 0- 0	18- 6- 1
at Virginia	12-29-09	54-63	L	5- 5- 1	5- 3- 3	3- 4- 0	6- 2- 0	7- 0- 3	12- 8- 0	2- 1- 0	5- 2- 0	9- 6- 0
at Gardner-Webb	01-02-10	65-70	L	0- 0- 0	10- 5- 1	10- 0- 1	4- 3- 0	10- 5- 6	10- 6- 0	6- 1- 1	6- 8- 2	9-11- 0
NORTH CAROLINA A&T	01-05-10	57-51	W	0- 2- 0	14- 4- 4	2- 2- 1	0- 3- 0	4- 2- 3	9-11- 0	5- 0- 1	4- 2- 1	17-13- 3
WINTHROP	01-09-10	67-38	W	5- 1- 1	9- 6- 1	4- 5- 3	5- 2- 2	3- 0-10	5- 5- 1	11- 1- 1	4- 3- 2	21- 6- 1
LONGWOOD	01-12-10	78-55	W	1- 2- 1	19-10- 2	2- 4- 1	10- 6- 1	7- 0- 3	12- 5- 1	6- 3- 3	5- 2- 4	16-13- 3
PRESBYTERIAN COLLEGE	01-16-10	73-27	W	6- 3- 0	14- 3- 1	5- 5- 1	5- 3- 1	8- 2- 6	6- 2- 0	5- 0- 4	11- 3- 1	13- 5- 3
UNC ASHEVILLE	01-18-10	82-40	W	6- 1- 0	7- 4- 0	5- 3- 1	14- 5- 2	14- 1- 5	6-10- 2	6- 2- 6	10- 5- 3	12- 8- 2
at Charleston Southern	01-23-10	65-52	W	4- 1- 0	DNP	3- 4- 2	10- 9- 0	14- 0- 3	18-16- 0	2- 1- 0	3- 2- 1	11- 6- 4
at Coastal Carolina	01-25-10	57-38	W	7- 1- 0	DNP	0- 4- 2	6- 9- 1	8- 2- 2	15-12- 0	2- 0- 1	2- 3- 2	17-10- 1
at High Point	01-30-10	75-62	W	0- 0- 0	DNP	2- 2- 0	3- 4- 2	7- 5- 2	26-14- 0	6- 0- 1	2- 1- 2	29-11- 2
at Radford	02-01-10	63-45	W	0- 0- 1	DNP	2- 1- 0	13- 9- 0	10- 1- 7	4- 5- 0	5- 3- 1	9- 1- 2	20-11- 1
N.C. CENTRAL	02-04-10	64-44	W	6- 2- 2	DNP	15- 3- 2	3- 2- 4	8- 2- 8	16-11- 0	0- 1- 1	6- 4- 1	10- 6- 0
GARDNER-WEBB	02-08-10	56-59	L	0- 0- 1	DNP	6- 0- 0	4- 4- 2	6- 1- 3	15-10- 0	3- 0- 1	9- 2- 3	13-13- 1
at Winthrop	02-15-10	52-18	W	2- 2- 1	DNP	11- 5- 0	9- 5- 1	1- 1- 1	4- 8- 1	5- 1- 1	3- 4- 1	15- 5- 2

54

Opponent	Date	Score	WL	COY,CARRA
WINSTON-SALEM STATE	11-13-09	71-26	W	3- 1- 0
UNC GREENSBORO	11-17-09	60-42	W	2- 4- 0
vs Tulane	11-20-09	63-52	W	DNP
at Navy	11-21-09	55-43	W	DNP
at Lafayette	11-28-09	90-55	W	2- 1- 0
JAMES MADISON	12-01-09	50-60	L	0- 1- 0
GLENVILLE STATE	12-05-09	86-45	W	2- 4- 0
at Auburn	12-15-09	64-70	L	DNP
vs Cornell	12-28-09	70-40	W	3- 2- 0
at Virginia	12-29-09	54-63	L	DNP
at Gardner-Webb	01-02-10	65-70	L	0- 1- 0
NORTH CAROLINA A&T	01-05-10	57-51	W	2- 0- 0
WINTHROP	01-09-10	67-38	W	0- 3- 0
LONGWOOD	01-12-10	78-55	W	0- 1- 0
PRESBYTERIAN COLLEGE	01-16-10	73-27	W	0- 2- 0
UNC ASHEVILLE	01-18-10	82-40	W	2- 1- 0
at Charleston Southern	01-23-10	65-52	W	0- 1- 0
at Coastal Carolina	01-25-10	57-38	W	DNP
at High Point	01-30-10	75-62	W	0- 0- 0
at Radford	02-01-10	63-45	W	0- 1- 0
N.C. CENTRAL	02-04-10	64-44	W	0- 0- 0
GARDNER-WEBB	02-08-10	56-59	L	DNP
at Winthrop	02-15-10	52-18	W	2- 4- 0

2009-10 Liberty Women's Basketball
 Liberty Player High/Low Analysis (as of Feb 17, 2010)
 All games

Liberty - INDIVIDUAL GAME HIGHS

Points.....	29	BROWN, Devon at High Point (01-30-10)
	26	WARLEY, Avery at High Point (01-30-10)
	26	BROWN, Devon vs UNC Greensboro (11-17-09)
	26	BROWN, Devon vs Winston-Salem State (11-13-09)
	21	BROWN, Devon vs Winthrop (01-09-10)
	21	WASHINGTON, LaKendra at Lafayette (11-28-09)
Field Goals Made.....	12	BROWN, Devon at High Point (01-30-10)
	11	BROWN, Devon vs UNC Greensboro (11-17-09)
	11	BROWN, Devon vs Winston-Salem State (11-13-09)
Field Goal Att.....	18	BROWN, Devon vs Gardner-Webb (02-08-10)
	17	BROWN, Devon at High Point (01-30-10)
	17	BROWN, Devon vs Longwood (01-12-10)
FG Pct (min 5 made).....	1.000 (7-7)	ANTIC, Jelena vs Presbyterian College (01-16-10)
	.875 (7-8)	BEECHER, Kylee vs Glenville State (12-05-09)
3-Point FG Made.....	3	BROWN, Devon vs Presbyterian College (01-16-10)
	3	BROWN, Devon at Navy (11-21-09)
	3	BROWN, Devon vs Tulane (11-20-09)
	3	BROWN, Devon vs Winston-Salem State (11-13-09)
3-Point FG Att.....	6	BROWN, Devon vs Winthrop (01-09-10)
	6	BROWN, Devon at Virginia (12-29-09)
	6	WASHINGTON, LaKendra vs Winston-Salem State (11-13-09)
3-Pt FG Pct (min 2 made).....	1.000 (2-2)	WASHINGTON, LaKendra at Coastal Carolina (01-25-10)
	1.000 (2-2)	MAYS, Amber vs UNC Asheville (01-18-10)
	1.000 (2-2)	ANTIC, Jelena at Gardner-Webb (01-02-10)
Free Throws Made.....	8	BROWN, Devon at Radford (02-01-10)
	8	WARLEY, Avery at High Point (01-30-10)
	8	BEECHER, Kylee vs UNC Asheville (01-18-10)
	8	BROWN, Devon at Navy (11-21-09)
Free Throw Att.....	11	WARLEY, Avery at High Point (01-30-10)
	10	BEECHER, Kylee vs UNC Asheville (01-18-10)
FT Pct (min 3 made).....	1.000 (6-6)	BROWN, Devon vs Longwood (01-12-10)
	1.000 (4-4)	BROWN, Devon at Coastal Carolina (01-25-10)
	1.000 (4-4)	BROWN, Devon at Gardner-Webb (01-02-10)
	1.000 (4-4)	BEECHER, Kylee vs Winston-Salem State (11-13-09)
	1.000 (4-4)	DALE, Danika vs Winston-Salem State (11-13-09)
	1.000 (3-3)	DALE, Danika at Winthrop (02-15-10)
	1.000 (3-3)	BROWN, Devon vs Winthrop (01-09-10)
	1.000 (3-3)	BROWN, Devon at Auburn (12-15-09)
	1.000 (3-3)	WARLEY, Avery at Lafayette (11-28-09)
Rebounds.....	16	WARLEY, Avery at Charleston Southern (01-23-10)
	14	WARLEY, Avery at High Point (01-30-10)
Assists.....	10	MAYS, Amber vs Winthrop (01-09-10)
	8	MAYS, Amber vs N.C. Central (02-04-10)
	8	MAYS, Amber vs Cornell (12-28-09)
Steals.....	5	MORGAN, Dymond vs Presbyterian College (01-16-10)
	5	MAYS, Amber vs Longwood (01-12-10)
	5	BROWN, Devon at Navy (11-21-09)
	5	WASHINGTON, LaKendra vs Winston-Salem State (11-13-09)
Blocked Shots.....	3	WARLEY, Avery at Winthrop (02-15-10)
	3	WARLEY, Avery vs UNC Asheville (01-18-10)
Turnovers.....	8	MORGAN, Dymond vs Glenville State (12-05-09)
	7	MAYS, Amber at Virginia (12-29-09)
Fouls.....	5	WARLEY, Avery vs Gardner-Webb (02-08-10)

5 MAYS, Amber at High Point (01-30-10)
5 WARLEY, Avery vs Longwood (01-12-10)
5 ANTIC, Jelena at Gardner-Webb (01-02-10)
5 WARLEY, Avery at Gardner-Webb (01-02-10)
5 MAYS, Amber at Virginia (12-29-09)
5 WARLEY, Avery vs James Madison (12-01-09)
5 WASHINGTON, LaKendra vs UNC Greensboro (11-17-09)

2009-10 Liberty Women's Basketball
 Liberty High/Low Analysis (as of Feb 17, 2010)
 All games

OPPONENT INDIVIDUAL GAME HIGHS

Points.....	22	Jackson, Lauren at Lafayette (11-28-09)
	20	MOSS, Sydnei at Coastal Carolina (01-25-10)
	19	Wright, Monica at Virginia (12-29-09)
	17	Greenleaf, Jordan at Auburn (12-15-09)
	15	ROUNDTREE, Margaret at Gardner-Webb (01-02-10)
	15	McMunigal, Virginia vs Cornell (12-28-09)
	15	Hislop, Tarik vs James Madison (12-01-09)
Field Goals Made.....	7	Wright, Monica at Virginia (12-29-09)
	6	MOSS, Sydnei at Coastal Carolina (01-25-10)
	6	ROUNDTREE, Margaret at Gardner-Webb (01-02-10)
	6	Hilliard, Chantel at Auburn (12-15-09)
	6	Wright, LaKeisha at Lafayette (11-28-09)
	6	Jackson, Lauren at Lafayette (11-28-09)
Field Goal Att.....	20	MILLER, Joanna vs N.C. Central (02-04-10)
	17	MOSS, Sydnei at Coastal Carolina (01-25-10)
FG Pct (min 5 made).....	.833 (5-6)	BROWN, Shamia at High Point (01-30-10)
	.833 (5-6)	SAMS,Jaleesa vs North Carolina A&T (01-05-10)
	.833 (5-6)	McCall, Telia at Virginia (12-29-09)
3-Point FG Made.....	4	MOSS, Sydnei at Coastal Carolina (01-25-10)
	4	Smalley, Alli at Auburn (12-15-09)
	4	KALJO, Indira vs Tulane (11-20-09)
3-Point FG Att.....	12	KALJO, Indira vs Tulane (11-20-09)
	11	Autumn Davis vs Glenville State (12-05-09)
3-Pt FG Pct (min 2 made).....	1.000 (3-3)	HUDSON, Dominique vs Gardner-Webb (02-08-10)
	1.000 (2-2)	BLANKS, Shanise vs N.C. Central (02-04-10)
Free Throws Made.....	7	HUDSON, Monique at Gardner-Webb (01-02-10)
	7	Greenleaf, Jordan at Auburn (12-15-09)
	7	Hislop, Tarik vs James Madison (12-01-09)
	7	Jackson, Lauren at Lafayette (11-28-09)
Free Throw Att.....	9	Hislop, Tarik vs James Madison (12-01-09)
	8	FIELDS, Frances at High Point (01-30-10)
	8	TERRY, Helen at Charleston Southern (01-23-10)
	8	MONTGOMERY, Lindsey vs UNC Asheville (01-18-10)
	8	HUDSON, Monique at Gardner-Webb (01-02-10)
	8	Greenleaf, Jordan at Auburn (12-15-09)
	8	Jackson, Lauren at Lafayette (11-28-09)
FT Pct (min 3 made).....	1.000 (6-6)	ERWINSPENCER, Da'Nar at Radford (02-01-10)
	1.000 (4-4)	MOSS, Sydnei at Coastal Carolina (01-25-10)
	1.000 (4-4)	SCHWAGMEYER, Ali at Charleston Southern (01-23-10)
	1.000 (4-4)	HUDSON, Dominique at Gardner-Webb (01-02-10)
	1.000 (3-3)	RYSKA, Kathi at Winthrop (02-15-10)
Rebounds.....	9	Consedine, Cassie at Navy (11-21-09)
	8	MOSS, Sydnei at Coastal Carolina (01-25-10)
	8	MONTGOMERY, Lindsey vs UNC Asheville (01-18-10)
Assists.....	9	HUDSON, Dominique at Gardner-Webb (01-02-10)
	6	HUDSON, Dominique vs Gardner-Webb (02-08-10)
	6	FIELDS, Frances at High Point (01-30-10)
Steals.....	10	Wright, Monica at Virginia (12-29-09)
	5	SHEPARD, Kendall vs UNC Asheville (01-18-10)
	5	Kellum, Paulisha at Virginia (12-29-09)
Blocked Shots.....	3	WHITE, Katie at Coastal Carolina (01-25-10)
	3	POPE, LaTroya at Gardner-Webb (01-02-10)
Turnovers.....	9	MILLER, Joanna vs N.C. Central (02-04-10)
	9	ERWINSPENCER, Da'Nar at Radford (02-01-10)
	9	Becky Fernandes vs Longwood (01-12-10)

Fouls.....

9 Benson, Lauren vs Cornell (12-28-09)
5 WHITE, Chanel at Winthrop (02-15-10)
5 RILES, Kelli vs UNC Asheville (01-18-10)
5 Morgan Smith vs Longwood (01-12-10)
5 HUDSON, Dominique at Gardner-Webb (01-02-10)
5 POPE, LaTroya at Gardner-Webb (01-02-10)
5 Myers, Angela at Navy (11-21-09)
5 BROWN, Chassity vs Tulane (11-20-09)
5 RECTOR,Rene vs Winston-Salem State (11-13-09)

2009-10 Liberty Women's Basketball
 Liberty Team High/Low Analysis (as of Feb 17, 2010)
 All games

Liberty - TEAM GAME HIGHS

POINTS.....	90	at Lafayette (11-28-09)
	86	GLENVILLE STATE (12-05-09)
	82	UNC ASHEVILLE (01-18-10)
	78	LONGWOOD (01-12-10)
	75	at High Point (01-30-10)
FIELD GOALS MADE.....	37	at Lafayette (11-28-09)
	35	GLENVILLE STATE (12-05-09)
FIELD GOAL ATTEMPTS.....	63	UNC ASHEVILLE (01-18-10)
	61	LONGWOOD (01-12-10)
FIELD GOAL PERCENTAGE.....	.644 (29-45)	PRESBYTERIAN COLLEGE (01-16-10)
	.617 (37-60)	at Lafayette (11-28-09)
3 PT FIELD GOALS MADE.....	9	UNC ASHEVILLE (01-18-10)
	5	PRESBYTERIAN COLLEGE (01-16-10)
	5	WINTHROP (01-09-10)
3 PT FG ATTEMPTS.....	17	UNC ASHEVILLE (01-18-10)
	14	WINSTON-SALEM STATE (11-13-09)
3 PT FG PERCENTAGE.....	.667 (4-6)	vs Tulane (11-20-09)
	.529 (9-17)	UNC ASHEVILLE (01-18-10)
FREE THROWS MADE.....	26	at High Point (01-30-10)
	21	at Radford (02-01-10)
FREE THROW ATTEMPTS.....	35	at High Point (01-30-10)
	29	at Radford (02-01-10)
FREE THROW PERCENTAGE.....	.923 (12-13)	at Auburn (12-15-09)
	.800 (8-10)	at Virginia (12-29-09)
REBOUNDS.....	67	GLENVILLE STATE (12-05-09)
	54	LONGWOOD (01-12-10)
ASSISTS.....	25	GLENVILLE STATE (12-05-09)
	22	WINTHROP (01-09-10)
STEALS.....	19	PRESBYTERIAN COLLEGE (01-16-10)
	18	UNC ASHEVILLE (01-18-10)
BLOCKED SHOTS.....	6	UNC ASHEVILLE (01-18-10)
	5	at Winthrop (02-15-10)
TURNOVERS.....	33	GLENVILLE STATE (12-05-09)
	30	at Virginia (12-29-09)
FOULS.....	27	at Gardner-Webb (01-02-10)
	23	JAMES MADISON (12-01-09)
	23	at Lafayette (11-28-09)

2009-10 Liberty Women's Basketball
 Liberty High/Low Analysis (as of Feb 17, 2010)
 All games

Opponent - GAME HIGHS

POINTS.....	70	at Gardner-Webb (01-02-10)
	70	at Auburn (12-15-09)
	63	at Virginia (12-29-09)
	62	at High Point (01-30-10)
	60	JAMES MADISON (12-01-09)
FIELD GOALS MADE.....	24	at Auburn (12-15-09)
	23	GARDNER-WEBB (02-08-10)
FIELD GOAL ATTEMPTS.....	78	GLENVILLE STATE (12-05-09)
	54	JAMES MADISON (12-01-09)
FIELD GOAL PERCENTAGE.....	.523 (23-44)	GARDNER-WEBB (02-08-10)
	.480 (24-50)	at Auburn (12-15-09)
3 PT FIELD GOALS MADE.....	8	at Charleston Southern (01-23-10)
	7	LONGWOOD (01-12-10)
	7	GLENVILLE STATE (12-05-09)
	7	vs Tulane (11-20-09)
3 PT FG ATTEMPTS.....	49	GLENVILLE STATE (12-05-09)
	30	at Charleston Southern (01-23-10)
3 PT FG PERCENTAGE.....	.600 (3-5)	at Lafayette (11-28-09)
	.462 (6-13)	GARDNER-WEBB (02-08-10)
FREE THROWS MADE.....	26	at Gardner-Webb (01-02-10)
	20	at Lafayette (11-28-09)
FREE THROW ATTEMPTS.....	36	at Gardner-Webb (01-02-10)
	32	JAMES MADISON (12-01-09)
FREE THROW PERCENTAGE.....	1.000 (6-6)	at Coastal Carolina (01-25-10)
	.818 (18-22)	at Charleston Southern (01-23-10)
REBOUNDS.....	41	JAMES MADISON (12-01-09)
	35	UNC GREENSBORO (11-17-09)
ASSISTS.....	17	at Gardner-Webb (01-02-10)
	16	vs Tulane (11-20-09)
STEALS.....	19	at Virginia (12-29-09)
	15	GLENVILLE STATE (12-05-09)
BLOCKED SHOTS.....	5	at Coastal Carolina (01-25-10)
	4	at High Point (01-30-10)
TURNOVERS.....	32	WINSTON-SALEM STATE (11-13-09)
	30	PRESBYTERIAN COLLEGE (01-16-10)
FOULS.....	25	at High Point (01-30-10)
	24	LONGWOOD (01-12-10)
	24	at Gardner-Webb (01-02-10)
	24	GLENVILLE STATE (12-05-09)

2009-10 Liberty Women's Basketball
 Liberty High/Low Analysis (as of Feb 17, 2010)
 All games

Liberty - GAME LOWS

POINTS.....	50	JAMES MADISON (12-01-09)
	52	at Winthrop (02-15-10)
	54	at Virginia (12-29-09)
	55	at Navy (11-21-09)
	56	GARDNER-WEBB (02-08-10)
FIELD GOALS MADE.....	18	JAMES MADISON (12-01-09)
	19	at Navy (11-21-09)
FIELD GOAL ATTEMPTS.....	41	at Radford (02-01-10)
	45	PRESBYTERIAN COLLEGE (01-16-10)
FIELD GOAL PERCENTAGE.....	.305 (18-59)	JAMES MADISON (12-01-09)
	.385 (20-52)	at Coastal Carolina (01-25-10)
3 PT FIELD GOALS MADE.....	0	GLENVILLE STATE (12-05-09)
	0	at Radford (02-01-10)
3 PT FG ATTEMPTS.....	1	GLENVILLE STATE (12-05-09)
	3	at Radford (02-01-10)
3 PT FG PERCENTAGE.....	.000 (0-1)	GLENVILLE STATE (12-05-09)
	.000 (0-3)	at Radford (02-01-10)
FREE THROWS MADE.....	8	at Virginia (12-29-09)
	8	WINTHROP (01-09-10)
	8	N.C. CENTRAL (02-04-10)
FREE THROW ATTEMPTS.....	10	at Virginia (12-29-09)
	11	WINTHROP (01-09-10)
FREE THROW PERCENTAGE.....	.455 (10-22)	UNC GREENSBORO (11-17-09)
	.524 (11-21)	vs Cornell (12-28-09)
REBOUNDS.....	23	at Auburn (12-15-09)
	32	PRESBYTERIAN COLLEGE (01-16-10)
ASSISTS.....	6	JAMES MADISON (12-01-09)
	6	at Auburn (12-15-09)
STEALS.....	6	JAMES MADISON (12-01-09)
	6	N.C. CENTRAL (02-04-10)
BLOCKED SHOTS.....	0	at Navy (11-21-09)
	1	at Lafayette (11-28-09)
	1	at Auburn (12-15-09)
	1	at Gardner-Webb (01-02-10)
	1	at Charleston Southern (01-23-10)
TURNOVERS.....	13	at Coastal Carolina (01-25-10)
	14	at Lafayette (11-28-09)
	14	at High Point (01-30-10)
FOULS.....	10	PRESBYTERIAN COLLEGE (01-16-10)
	11	UNC ASHEVILLE (01-18-10)

2009-10 Liberty Women's Basketball
 Liberty High/Low Analysis (as of Feb 17, 2010)
 All games

Opponent - GAME LOWS

POINTS.....	18	at Winthrop (02-15-10)
	26	WINSTON-SALEM STATE (11-13-09)
	27	PRESBYTERIAN COLLEGE (01-16-10)
	38	WINTHROP (01-09-10)
	38	at Coastal Carolina (01-25-10)
FIELD GOALS MADE.....	5	at Winthrop (02-15-10)
	10	PRESBYTERIAN COLLEGE (01-16-10)
FIELD GOAL ATTEMPTS.....	36	PRESBYTERIAN COLLEGE (01-16-10)
	39	at Lafayette (11-28-09)
FIELD GOAL PERCENTAGE.....	.119 (5-42)	at Winthrop (02-15-10)
	.192 (15-78)	GLENVILLE STATE (12-05-09)
3 PT FIELD GOALS MADE.....	0	at Winthrop (02-15-10)
	1	WINSTON-SALEM STATE (11-13-09)
	1	PRESBYTERIAN COLLEGE (01-16-10)
3 PT FG ATTEMPTS.....	5	at Lafayette (11-28-09)
	7	at Virginia (12-29-09)
3 PT FG PERCENTAGE.....	.000 (0-14)	at Winthrop (02-15-10)
	.056 (1-18)	PRESBYTERIAN COLLEGE (01-16-10)
FREE THROWS MADE.....	3	WINSTON-SALEM STATE (11-13-09)
	5	vs Tulane (11-20-09)
FREE THROW ATTEMPTS.....	5	WINSTON-SALEM STATE (11-13-09)
	6	at Coastal Carolina (01-25-10)
FREE THROW PERCENTAGE.....	.421 (8-19)	UNC GREENSBORO (11-17-09)
	.500 (5-10)	vs Tulane (11-20-09)
	.500 (8-16)	NORTH CAROLINA A&T (01-05-10)
REBOUNDS.....	18	PRESBYTERIAN COLLEGE (01-16-10)
	19	LONGWOOD (01-12-10)
ASSISTS.....	2	at Winthrop (02-15-10)
	5	WINSTON-SALEM STATE (11-13-09)
STEALS.....	2	at Lafayette (11-28-09)
	2	at High Point (01-30-10)
BLOCKED SHOTS.....	0	WINSTON-SALEM STATE (11-13-09)
	0	at Navy (11-21-09)
	0	vs Cornell (12-28-09)
	0	WINTHROP (01-09-10)
TURNOVERS.....	13	at Gardner-Webb (01-02-10)
	15	JAMES MADISON (12-01-09)
	15	at Charleston Southern (01-23-10)
FOULS.....	13	WINSTON-SALEM STATE (11-13-09)
	13	at Auburn (12-15-09)
	13	N.C. CENTRAL (02-04-10)

2009-10 Liberty Women's Basketball
 Liberty Team Game-by-Game (as of Feb 17, 2010)
 All games

TEAM STATISTICS

Opponent	Date	Score	W/L	---TOTAL---		--3-PTRS--		----REBOUNDS----				Pts---Avg								
				FG-FGA	Pct	3FG-FGA	Pct	FT-FTA	Pct	Off	Def	Tot	Avg	PF	A	TO	Blk	Stl	Pts	Avg
WINSTON-SALEM STATE	11-13-09	71-26	W	27-57	.474	4-14	.286	13-17	.765	16	23	39	39.0	15	18	19	4	15	71	71.0
UNC GREENSBORO	11-17-09	60-42	W	24-49	.490	2-9	.222	10-22	.455	13	27	40	39.5	17	10	19	4	14	60	65.5
vs Tulane	11-20-09	63-52	W	24-47	.511	4-6	.667	11-19	.579	15	23	38	39.0	16	10	24	3	11	63	64.7
at Navy	11-21-09	55-43	W	19-48	.396	3-8	.375	14-21	.667	17	23	40	39.2	14	11	18	0	7	55	62.2
at Lafayette	11-28-09	90-55	W	37-60	.617	3-6	.500	13-20	.650	15	18	33	38.0	23	15	14	1	14	90	67.8
JAMES MADISON	12-01-09	50-60	L	18-59	.305	1-9	.111	13-17	.765	14	32	46	39.3	23	6	20	3	6	50	64.8
GLENVILLE STATE	12-05-09	86-45	W	35-57	.614	0-1	.000	16-28	.571	18	49	67	43.3	17	25	33	2	11	86	67.9
at Auburn	12-15-09	64-70	L	25-51	.490	2-7	.286	12-13	.923	6	17	23	40.8	18	6	16	1	8	64	67.4
vs Cornell	12-28-09	70-40	W	28-53	.528	3-11	.273	11-21	.524	16	27	43	41.0	18	16	22	4	12	70	67.7
at Virginia	12-29-09	54-63	L	22-54	.407	2-11	.182	8-10	.800	16	18	34	40.3	20	7	30	3	10	54	66.3
at Gardner-Webb	01-02-10	65-70	L	23-52	.442	4-9	.444	15-25	.600	16	30	46	40.8	27	11	23	1	10	65	66.2
NORTH CAROLINA A&T	01-05-10	57-51	W	21-54	.389	1-6	.167	14-23	.609	19	26	45	41.2	16	13	23	3	11	57	65.4
WINTHROP	01-09-10	67-38	W	27-53	.509	5-13	.385	8-11	.727	12	25	37	40.8	15	22	16	3	14	67	65.5
LONGWOOD	01-12-10	78-55	W	30-61	.492	1-9	.111	17-24	.708	26	28	54	41.8	19	19	28	3	12	78	66.4
PRESBYTERIAN COLLEGE	01-16-10	73-27	W	29-45	.644	5-11	.455	10-17	.588	11	21	32	41.1	10	17	21	2	19	73	66.9
UNC ASHEVILLE	01-18-10	82-40	W	29-63	.460	9-17	.529	15-24	.625	24	25	49	41.6	11	21	18	6	18	82	67.8
at Charleston Souther	01-23-10	65-52	W	25-49	.510	1-6	.167	14-25	.560	15	29	44	41.8	17	10	17	1	8	65	67.6
at Coastal Carolina	01-25-10	57-38	W	20-52	.385	3-8	.375	14-23	.609	22	23	45	41.9	15	9	13	3	10	57	67.1
at High Point	01-30-10	75-62	W	24-50	.480	1-6	.167	26-35	.743	12	30	42	41.9	19	9	14	3	8	75	67.5
at Radford	02-01-10	63-45	W	21-41	.512	0-3	.000	21-29	.724	13	23	36	41.7	15	12	24	4	15	63	67.2
N.C. CENTRAL	02-04-10	64-44	W	26-52	.500	4-9	.444	8-13	.615	21	17	38	41.5	15	18	21	3	6	64	67.1
GARDNER-WEBB	02-08-10	56-59	L	21-53	.396	3-11	.273	11-18	.611	14	19	33	41.1	19	11	15	2	8	56	66.6
at Winthrop	02-15-10	52-18	W	20-51	.392	3-12	.250	9-14	.643	18	24	42	41.1	15	8	20	5	12	52	66.0
Liberty		1517		575-1211	.475	64-202	.317	303-469	.646	369	577	946	41.1	394	304	468	64	259	1517	66.0
Opponents		1095		367-1102	.333	100-391	.256	261-397	.657	231	370	601	26.1	429	247	483	46	182	1095	47.6

Games played: 23
 Points/game: 66.0
 FG Pct: 47.5
 3FG Pct: 31.7
 FT Pct: 64.6

Rebounds/game: 41.1
 Assists/game: 13.2
 Turnovers/game: 20.3
 Assist/turnover ratio: 0.6
 Steals/game: 11.3
 Blocks/game: 2.8

2009-10 Liberty Women's Basketball
 Liberty Team Game-by-Game Comparison (as of Feb 17, 2010)
 All games

Opponent	1st	2nd	Score	Mar	Total FG	FG Pct	3-Pointers	3FG Pct	Free Throws	FT Pct	Rebounds	Assist	Turnover	Block	Steal	Fouls	
WINSTON-SALEM STATE.....	30/12	41/14	71-26	+45	27-57/11-42	.474/.262	4-14/ 1-12	.286/.083	13-17/ 3-5	.765/.600	39/25	+14	18/5	19/32	4/0	15/4	15/13
UNC GREENSBORO.....	32/21	28/21	60-42	+18	24-49/15-52	.490/.288	2-9/ 4-24	.222/.167	10-22/ 8-19	.455/.421	40/35	+5	10/10	19/21	4/1	14/11	17/21
Tulane.....	32/19	31/33	63-52	+11	24-47/20-48	.511/.417	4-6/ 7-21	.667/.333	11-19/ 5-10	.579/.500	38/22	+16	10/16	24/22	3/2	11/8	16/19
Navy.....	24/32	31/11	55-43	+12	19-48/15-44	.396/.341	3-8/ 4-20	.375/.200	14-21/ 9-15	.667/.600	40/26	+14	11/11	18/17	0/0	7/8	14/19
Lafayette.....	42/28	48/27	90-55	+35	37-60/16-39	.617/.410	3-6/ 3-5	.500/.600	13-20/20-26	.650/.769	33/20	+13	15/8	14/24	1/2	14/2	23/20
JAMES MADISON.....	16/28	34/32	50-60	(10)	18-59/18-54	.305/.333	1-9/ 5-18	.111/.278	13-17/19-32	.765/.594	46/41	+5	6/13	20/15	3/3	6/4	23/15
GLENVILLE STATE.....	39/23	47/22	86-45	+41	35-57/15-78	.614/.192	0-1/ 7-49	.000/.143	16-28/ 8-11	.571/.727	67/29	+38	25/12	33/20	2/1	11/15	17/24
Auburn.....	19/33	45/37	64-70	(6)	25-51/24-50	.490/.480	2-7/ 6-17	.286/.353	12-13/16-23	.923/.696	23/34	(11)	6/14	16/19	1/3	8/6	18/13
Cornell.....	31/14	39/26	70-40	+30	28-53/13-48	.528/.271	3-11/ 4-16	.273/.250	11-21/10-18	.524/.556	43/25	+18	16/9	22/22	4/0	12/6	18/17
Virginia.....	29/33	25/30	54-63	(9)	22-54/21-49	.407/.429	2-11/ 2-7	.182/.286	8-10/19-26	.800/.731	34/26	+8	7/13	30/20	3/2	10/19	20/15
Gardner-Webb.....	29/29	36/41	65-70	(5)	23-52/19-51	.442/.373	4-9/ 6-16	.444/.375	15-25/26-36	.600/.722	46/27	+19	11/17	23/13	1/3	10/9	27/24
NORTH CAROLINA A&T.....	33/27	24/24	57-51	+6	21-54/19-48	.389/.396	1-6/ 5-17	.167/.294	14-23/ 8-16	.609/.500	45/28	+17	13/13	23/19	3/3	11/9	16/18
WINTHROP.....	24/16	43/22	67-38	+29	27-53/13-41	.509/.317	5-13/ 3-9	.385/.333	8-11/ 9-13	.727/.692	37/21	+16	22/10	16/20	3/0	14/4	15/15
LONGWOOD.....	38/25	40/30	78-55	+23	30-61/18-52	.492/.346	1-9/ 7-22	.111/.318	17-24/12-18	.708/.667	54/19	+35	19/13	28/24	3/3	12/12	19/24
PRESBYTERIAN COLLEGE.....	36/10	37/17	73-27	+46	29-45/10-36	.644/.278	5-11/ 1-18	.455/.056	10-17/ 6-10	.588/.600	32/18	+14	17/7	21/30	2/1	19/10	10/16
UNC ASHEVILLE.....	41/17	41/23	82-40	+42	29-63/14-51	.460/.275	9-17/ 5-12	.529/.417	15-24/ 7-12	.625/.583	49/27	+22	21/9	18/25	6/1	18/9	11/19
Charleston Southern.....	37/24	28/28	65-52	+13	25-49/13-47	.510/.277	1-6/ 8-30	.167/.267	14-25/18-22	.560/.818	44/26	+18	10/10	17/15	1/2	8/6	17/23
Coastal Carolina.....	16/21	41/17	57-38	+19	20-52/13-41	.385/.317	3-8/ 6-14	.375/.429	14-23/ 6-6	.609/1.000	45/21	+24	9/7	13/20	3/5	10/7	15/19
High Point.....	34/41	41/21	75-62	+13	24-50/20-49	.480/.408	1-6/ 5-14	.167/.357	26-35/17-27	.743/.630	42/25	+17	9/15	14/16	3/4	8/2	19/25
Radford.....	30/15	33/30	63-45	+18	21-41/15-51	.512/.294	0-3/ 3-12	.000/.250	21-29/12-17	.724/.706	36/26	+10	12/8	24/23	4/3	15/7	15/21
N.C. CENTRAL.....	30/20	34/24	64-44	+20	26-52/17-45	.500/.378	4-9/ 2-11	.444/.182	8-13/ 8-12	.615/.667	38/21	+17	18/12	21/21	3/3	6/11	15/13
GARDNER-WEBB.....	27/25	29/34	56-59	(3)	21-53/23-44	.396/.523	3-11/ 6-13	.273/.462	11-18/ 7-12	.611/.583	33/27	+6	11/13	15/17	2/1	8/4	19/19
Winthrop.....	23/10	29/ 8	52-18	+34	20-51/ 5-42	.392/.119	3-12/ 0-14	.250/.000	9-14/ 8-11	.643/.727	42/32	+10	8/2	20/28	5/3	12/9	15/17

Note: Game totals are displayed in the format TEAM/OPPONENT for each category

2009-10 Liberty Women's Basketball
 Liberty Combined Team Statistics (as of Feb 17, 2010)
 Conference games

RECORD:	OVERALL	HOME	AWAY	NEUTRAL
ALL GAMES.....	(8-2)	(3-1)	(5-1)	(0-0)
CONFERENCE.....	(8-2)	(3-1)	(5-1)	(0-0)
NON-CONFERENCE.....	(0-0)	(0-0)	(0-0)	(0-0)

## Player	GP-GS	Min--Avg	---TOTAL---		---3-PTS---		FT-FTA	Pct	---REBOUNDS---				PF	FO	A	TO	Blk	Stl	Pts	Avg
			FG-FGA	Pct	3FG-FGA	Pct			Off	Def	Tot	Avg								
40 BROWN, Devon.....	10-10	289 28.9	60-131	.458	12-40	.300	28-35	.800	22	64	86	8.6	18	0	17	24	5	21	160	16.0
23 WARLEY, Avery.....	10-10	276 27.6	41-71	.577	0-0	.000	27-50	.540	34	54	88	8.8	34	2	4	24	14	11	109	10.9
11 ANTIC, Jelena.....	4-4	94 23.5	18-25	.720	3-4	.750	1-1	1.000	11	7	18	4.5	11	1	3	10	0	4	40	10.0
21 MAYS, Amber.....	10-10	261 26.1	30-61	.492	2-4	.500	19-38	.500	7	11	18	1.8	23	1	45	29	1	17	81	8.1
15 BEECHER, Kylee.....	10-6	263 26.3	22-55	.400	1-6	.167	28-38	.737	23	30	53	5.3	19	0	11	14	3	12	73	7.3
32 McLEOD, Rachel.....	10-10	268 26.8	19-46	.413	4-9	.444	17-20	.850	13	19	32	3.2	6	0	19	14	0	14	59	5.9
25 MORGAN, Dymond.....	10-0	168 16.8	17-46	.370	4-13	.308	13-19	.684	1	8	9	0.9	20	0	17	19	0	21	51	5.1
12 DALE, Danika.....	10-0	190 19.0	18-39	.462	3-9	.333	9-11	.818	10	19	29	2.9	13	0	10	19	4	8	48	4.8
01 WASHINGTON, LaKendr	10-0	127 12.7	12-25	.480	5-11	.455	1-6	.167	4	5	9	0.9	12	0	4	13	0	14	30	3.0
54 COY, Carra.....	8-0	64 8.0	2-10	.200	0-0	.000	0-3	.000	8	5	13	1.6	7	0	0	4	3	0	4	0.5
TEAM.....									24	27	51	5.1	0		11					
Total.....	10	2000	239-509	.470	34-96	.354	143-221	.647	157	249	406	40.6	163	4	130	181	30	122	655	65.5
Opponents.....	10	2000	145-453	.320	43-152	.283	116-166	.699	90	160	250	25.0	198	-	98	207	23	67	449	44.9

TEAM STATISTICS	LIBERTY	OPP	DATE	OPPONENT	W/L	SCORE	ATTEND
SCORING.....	655	449	*01-02-10	at Gardner-Webb	L	65-70	249
Points per game.....	65.5	44.9	*01-09-10	WINTHROP	W	67-38	557
Scoring margin.....	+20.6	-	*01-16-10	PRESBYTERIAN COLLEGE	W	73-27	688
FIELD GOALS-ATT.....	239-509	145-453	*01-18-10	UNC ASHEVILLE	W	82-40	826
Field goal pct.....	.470	.320	*01-23-10	at Charleston Southern	W	65-52	881
3 POINT FG-ATT.....	34-96	43-152	*01-25-10	at Coastal Carolina	W	57-38	687
3-point FG pct.....	.354	.283	*01-30-10	at High Point	W	75-62	439
3-pt FG made per game.	3.4	4.3	*02-01-10	at Radford	W	63-45	384
FREE THROWS-ATT.....	143-221	116-166	*02-08-10	GARDNER-WEBB	L	56-59	833
Free throw pct.....	.647	.699	*02-15-10	at Winthrop	W	52-18	560
F-Throws made per game	14.3	11.6	% = Navy Classic (Annapolis, Md.)				
REBOUNDS.....	406	250	# = Marriott Cavalier Classic (Charlottesville, Va.)				
Rebounds per game....	40.6	25.0	* = Big South Conference game				
Rebounding margin....	+15.6	-					
ASSISTS.....	130	98					
Assists per game.....	13.0	9.8					
TURNOVERS.....	181	207					
Turnovers per game....	18.1	20.7					
Turnover margin.....	+2.6	-					
Assist/turnover ratio.	0.7	0.5					
STEALS.....	122	67					
Steals per game.....	12.2	6.7					
BLOCKS.....	30	23					
Blocks per game.....	3.0	2.3					
ATTENDANCE.....	2904	3200					
Home games-Avg/Game...	4-726	6-533					
Neutral site-Avg/Game.	-	0-0					

SCORE BY PERIODS:	1st	2nd	Total
Liberty.....	297	358	- 655
Opponents.....	208	241	- 449

2009-10 Liberty Women's Basketball
 Liberty Extended Season Box Score (as of Feb 17, 2010)
 All games

RECORD:	OVERALL	HOME	AWAY	NEUTRAL
ALL GAMES.....	(18-5)	(9-2)	(7-3)	(2-0)
CONFERENCE.....	(8-2)	(3-1)	(5-1)	(0-0)
NON-CONFERENCE.....	(10-3)	(6-1)	(2-2)	(2-0)

# Player	GP-GS	Min--Avg	-----TOTAL-----			-----3-PTS-----			-----REBOUNDS-----			PF	FO	A	APG	TO	TOPG	A/TO	Blk	BPG	Stl	SPG	Pts	Avg
			FG-FGA	Pct	3FG-FGA	Pct	3FG/G	FT-FTA	Pct	Off	Def													
40 BROWN, Devon.....	23-23	652 28.3	143-301	.475	30-88	.341	1.30	68-91	.747	58 144	202 8.8	42 0	36 1.57	58	2.52	0.62	14	0.61	42	1.83	384	16.7		
23 WARLEY, Avery.....	23-23	633 27.5	98-169	.580	0-0	.000	0.00	40-79	.506	85 108	193 8.4	71 4	10 0.43	61	2.65	0.16	17	0.74	20	0.87	236	10.3		
21 MAVS, Amber.....	23-23	622 27.0	77-143	.538	4-7	.571	0.17	37-68	.544	10 28	38 1.7	60 2 101	4.39	76	3.30	1.33	1	0.04	55	2.39	195	8.5		
11 ANTTIC, Jelena.....	13-8	308 23.7	45-84	.536	5-10	.500	0.38	15-23	.652	34 35	69 5.3	24 1	20 1.54	34	2.62	0.59	2	0.15	12	0.92	110	8.5		
15 BECHER, Kylee.....	23-15	595 25.9	53-120	.442	1-10	.100	0.04	49-68	.721	44 52	96 4.2	39 0	24 1.04	40	1.74	0.60	7	0.30	19	0.83	156	6.8		
32 McLEOD, Rachel.....	23-23	558 24.3	44-114	.386	5-17	.294	0.22	34-44	.773	20 33	53 2.3	24 0	39 1.70	36	1.57	1.08	1	0.04	23	1.00	127	5.5		
01 WASHINGTON, Lakendr	23-0	327 14.2	42-95	.442	9-32	.281	0.39	10-21	.476	14 25	39 1.7	35 1	15 0.65	41	1.78	0.37	3	0.13	33	1.43	103	4.5		
12 DALE, Danika.....	23-0	377 16.4	34-82	.415	5-20	.250	0.22	23-33	.697	24 57	81 3.5	28 0	26 1.13	41	1.78	0.63	11	0.48	19	0.83	96	4.2		
25 MORGAN, Dymond.....	23-0	362 15.7	32-82	.390	5-18	.278	0.22	23-32	.719	7 31	38 1.7	45 0	33 1.43	51	2.22	0.65	0	0.00	34	1.48	92	4.0		
54 COY, Garra.....	17-0	166 9.8	7-21	.333	0-0	.000	0.00	4-10	.400	12 15	27 1.6	26 0	0 0.00	12	0.71	0.00	8	0.47	2	0.12	18	1.1		
TEAM.....										61 49	110 4.8	0		18										

Total.....	23	4600	575-1211	.475	64-202	.317	2.78	303-469	.646	369 577	946 41.1	394 8	304 13.22	468 20.35	0.65	64	2.78	259	11.26	1517	66.0
Opponents.....	23	4600	367-1102	.333	100-391	.256	4.35	261-397	.657	231 370	601 26.1	429 -	247 10.74	483 21.00	0.51	46	2.00	182	7.91	1095	47.6

SCORE BY PERIODS:	1st	2nd	Total	DEADBALL	REBOUNDS:	OFF	DEF	TOTAL
Liberty.....	692	825	- 1517			64	1	65
Opponents.....	523	572	- 1095			63	0	63

2009-10 Liberty Women's Basketball
 Liberty Combined Team Statistics (as of Feb 17, 2010)
 All games

RECORD:	OVERALL	HOME	AWAY	NEUTRAL
ALL GAMES.....	(18-5)	(9-2)	(7-3)	(2-0)
CONFERENCE.....	(8-2)	(3-1)	(5-1)	(0-0)
NON-CONFERENCE.....	(10-3)	(6-1)	(2-2)	(2-0)

## Player	GP-GS	Min--Avg	---TOTAL---		---3-PTS---		---REBOUNDS---				PF	FO	A	TO	Blk	Stl	Pts	Avg			
			FG-FGA	Pct	3FG-FGA	Pct	Off	Def	Tot	Avg											
40 BROWN, Devon.....	23-23	652 28.3	143-301	.475	30-88	.341	68-91	.747	58	144	202	8.8	42	0	36	58	14	42	384	16.7	
23 WARLEY, Avery.....	23-23	633 27.5	98-169	.580	0-0	.000	40-79	.506	85	108	193	8.4	71	4	10	61	17	20	236	10.3	
21 MAYS, Amber.....	23-23	622 27.0	77-143	.538	4-7	.571	37-68	.544	10	28	38	1.7	60	2	101	76	1	55	195	8.5	
11 ANTIC, Jelena.....	13-8	308 23.7	45-84	.536	5-10	.500	15-23	.652	34	35	69	5.3	24	1	20	34	2	12	110	8.5	
15 BEECHER, Kylee.....	23-15	595 25.9	53-120	.442	1-10	.100	49-68	.721	44	52	96	4.2	39	0	24	40	7	19	156	6.8	
32 McLEOD, Rachel.....	23-23	558 24.3	44-114	.386	5-17	.294	34-44	.773	20	33	53	2.3	24	0	39	36	1	23	127	5.5	
01 WASHINGTON, LaKendr	23-0	327 14.2	42-95	.442	9-32	.281	10-21	.476	14	25	39	1.7	35	1	15	41	3	33	103	4.5	
12 DALE, Danika.....	23-0	377 16.4	34-82	.415	5-20	.250	23-33	.697	24	57	81	3.5	28	0	26	41	11	19	96	4.2	
25 MORGAN, Dymond.....	23-0	362 15.7	32-82	.390	5-18	.278	23-32	.719	7	31	38	1.7	45	0	33	51	0	34	92	4.0	
54 COY, Carra.....	17-0	166 9.8	7-21	.333	0-0	.000	4-10	.400	12	15	27	1.6	26	0	0	12	8	2	18	1.1	
TEAM.....									61	49	110	4.8	0		18						

Total.....	23	4600	575-1211	.475	64-202	.317	303-469	.646	369	577	946	41.1	394	8	304	468	64	259	1517	66.0	
Opponents.....	23	4600	367-1102	.333	100-391	.256	261-397	.657	231	370	601	26.1	429	-	247	483	46	182	1095	47.6	

TEAM STATISTICS	LIBERTY	OPP	DATE	OPPONENT	W/L	SCORE	ATTEND	

SCORING.....	1517	1095	11-13-09	WINSTON-SALEM STATE	W	71-26	1192	
Points per game.....	66.0	47.6	11-17-09	UNC GREENSBORO	W	60-42	786	
Scoring margin.....	+18.3	-	%11-20-09	vs Tulane	W	63-52	207	
FIELD GOALS-ATT.....	575-1211	367-1102	%11-21-09	at Navy	W	55-43	852	
Field goal pct.....	.475	.333	11-28-09	at Lafayette	W	90-55	324	
3 POINT FG-ATT.....	64-202	100-391	12-01-09	JAMES MADISON	L	50-60	1209	
3-point FG pct.....	.317	.256	12-05-09	GLENNVILLE STATE	W	86-45	611	
3-pt FG made per game.	2.8	4.3	12-15-09	at Auburn	L	64-70	1566	
FREE THROWS-ATT.....	303-469	261-397	#12-28-09	vs Cornell	W	70-40	452	
Free throw pct.....	.646	.657	#12-29-09	at Virginia	L	54-63	3096	
F-Throws made per game	13.2	11.3	*01-02-10	at Gardner-Webb	L	65-70	249	
REBOUNDS.....	946	601	01-05-10	NORTH CAROLINA A&T	W	57-51	365	
Rebounds per game....	41.1	26.1	*01-09-10	WINTHROP	W	67-38	557	
Rebounding margin.....	+15.0	-	01-12-10	LONGWOOD	W	78-55	460	
ASSISTS.....	304	247	*01-16-10	PRESBYTERIAN COLLEGE	W	73-27	688	
Assists per game.....	13.2	10.7	*01-18-10	UNC ASHEVILLE	W	82-40	826	
TURNOVERS.....	468	483	*01-23-10	at Charleston Southern	W	65-52	881	
Turnovers per game....	20.3	21.0	*01-25-10	at Coastal Carolina	W	57-38	687	
Turnover margin.....	+0.7	-	*01-30-10	at High Point	W	75-62	439	
Assist/turnover ratio.	0.6	0.5	*02-01-10	at Radford	W	63-45	384	
STEALS.....	259	182	02-04-10	N.C. CENTRAL	W	64-44	781	
Steals per game.....	11.3	7.9	*02-08-10	GARDNER-WEBB	L	56-59	833	
BLOCKS.....	64	46	*02-15-10	at Winthrop	W	52-18	560	
Blocks per game.....	2.8	2.0	% = Navy Classic (Annapolis, Md.)					
ATTENDANCE.....	8308	9697	# = Marriott Cavalier Classic (Charlottesville, Va.)					
Home games-Avg/Game...	11-755	10-904	* = Big South Conference game					
Neutral site-Avg/Game.	-	2-330						

SCORE BY PERIODS:	1st	2nd	Total

Liberty.....	692	825	- 1517
Opponents.....	523	572	- 1095