

**2009-10 Liberty
Women's Basketball
Quick Facts**

General Information

Name of School..... Liberty University
City/Zip Lynchburg, Va. 24502
Founded 1971
Enrollment 11,311
Nickname..... Lady Flames
School Colors Red, White & Blue
Home Arena..... Vines Center
Capacity..... 8,085
Affiliation..... NCAA Division I
Conference..... Big South
Founder..... Dr. Jerry Falwell
Chancellor..... Jerry Falwell, Jr.
Director of Athletics..... Jeff Barber
Athletics Dept. Phone..... (434) 582-2100

Women's Basketball Information

Head Coach..... Carey Green
Alma Mater Coastal Carolina, '79
Record at School 249-81 (11th Year)
Career Record..... Same
Assistant Coaches
..... Alexis Sherard (St. Michael's, '93)
..... Heather Stephens (Wyoming, '03)
..... Andy Bloodworth (Calvin, '98)
Certified Athletic Trainer
..... Madeline Bosek

History

First Season of Basketball..... 1975-76
All-Time Record..... 520-409
NCAA Tournament Appearances..... 12
Last NCAA Appearance..... 2009
Opponent..... Louisville
Result..... L/42-62 (First Round)
Final/Highest Ranking N/A
Final 2008-09 Record..... 24-9
Conference Record/Finish..... 15-1/First
Starters Returning/Lost..... 2/3
Letterwinners Returning/Lost..... 7/7
Newcomers..... 6

Athletics Communications Info.

Asst. AD - Communications
..... Todd Wetmore
SID Office Phone..... (434) 582-2292
Cell Phone..... (434) 841-8974
Email Address..... twetmore@liberty.edu
Assoc. Director Ryan Bomberger
Cell Phone (434) 221-5576
Email Address... rbomberger@liberty.edu
Asst. Director..... Paul Carmany
Cell Phone..... (434) 221-5575
Email Address..... pjcarmany@liberty.edu
Asst. Director..... Eric Brown
Cell Phone..... (434) 221-8817
Email Address..... eqbrown@liberty.edu
Grad. Assistant..... Jennifer Shelton
Cell Phone..... (828) 638-3876
Email Address..... jbshelton2@liberty.edu
WBB Contact..... Paul Carmany
Ath. Comm. Fax..... (434) 582-2076
Website..... LibertyFlames.com

Media Information

Radio

Station..... WWMC "The Light" (90.9 FM)
Play-By-Play..... Jamie Hall
Color..... Josh Wood

Television

Station..... N/A
Play-By-Play..... N/A
Color..... N/A

Game No. 17 - Jan. 23, 2010



**Liberty LADY FLAMES
(12-4, 3-1 Big South)**

at



**Charleston So. LADY BUCCANEERS
(9-8, 1-3 Big South)**

Charleston, S.C. - CSU Field House - 5 p.m.

The Game

Liberty (12-4, 3-1 Big South) will begin a stretch of four consecutive road games Saturday at 5 p.m., when the Lady Flames tip off their annual South Carolina "Beach Trip" with a visit to Charleston Southern (9-8, 1-3 Big South). The contest will feature a matchup between the Big South's top two scorers: CSU's Katie Tull and Liberty's Devon Brown.

Last Time Out

The Lady Flames used defense and balanced scoring to key an 82-40 victory over UNC Asheville, Monday evening at the Vines Center. Liberty completed a 5-0 homestand by holding its 100th consecutive opponent to below 50 percent field goal shooting and putting four players in double figures in the scoring column.

On Deck

Liberty will remain in the Palmetto State for a Monday matchup with Coastal Carolina. Tipoff is set for 7 p.m. at Kimbel Arena, as the Lady Flames seek their 32nd consecutive victory in their head-to-head series with the Chanticleers.

Lady Flames On The Air

All Lady Flames basketball games may be heard LIVE on WWMC 90.9 FM "The Light." Jamie Hall, in the midst of his 16th year of broadcasting Lady Flames basketball, is once again handling the courtside play-by-play duties for road games. Nick Pierce and Josh Wood serve as the primary commentators for home contests.

Lady Flames On TV

All 15 of Liberty's home women's basketball games will be televised in 2009-10, including 14 on the Flames Sports Network (FSN) and one on SportSouth/MASN. FSN's regular announcing team consists of Ray Jones on play-by-play and Jamie Hall on color.

Liberty's Probable Starters

No.	Name	Pos.	Ht.	Yr.	PPG	RPG	Other Stats
21	Amber Mays	G	5-6	Sr.	8.8	1.6	4.7 apg
32	Rachel McLeod	G	5-10	Jr.	5.8	2.3	1.7 apg
40	Devon Brown	G	5-10	R-Fr.	16.8	8.8	1.8 spg
11	Jelena Antic	F	6-2	Fr.	8.5	5.3	1.5 apg
23	Avery Warley	F	6-3	R-So.	8.6	7.3	54.2 FG%

Reserves

1	LaKendra Washington	G	5-8	Fr.	5.3	2.1	1.6 spg
12	Danika Dale	G	6-1	So.	3.6	3.9	0.4 bpg
15	Kylee Beecher	F	6-4	So.	6.8	3.4	50.7 FG%
25	Dymond Morgan	G	5-7	Jr.	4.3	2.0	1.6 spg
30	Brittany Campbell	G	6-0	R-Fr.	--	--	--
43	Kittery Maine	F	6-4	Jr.	--	--	--
54	Carra Coy	F	6-6	Fr.	1.3	1.8	0.7 bpg

2009-10 Liberty Women's Basketball Schedule/Results

Overall: 12-4
Big South: 3-1

11/13 WINSTON-SALEM ST.* W, 71-26
11/17 UNC GREENSBORO^ W, 60-42

Navy Classic (Annapolis, Md.)

11/20 vs. Tulane W, 63-52
11/21 at Navy W, 55-43

11/28 at Lafayette W, 90-55

12/1 JAMES MADISON^ L, 50-60
12/5 GLENVILLE STATE^ W, 86-45
12/15 at Auburn L, 64-70

Marriott Cavalier Classic (Charlottesville, Va.)

12/28 vs. Cornell W, 70-40
12/29 at No. 21/23 Virginia L, 54-63

1/2 at Gardner-Webb* L, 65-70
1/5 N.C. A&T^ W, 57-51
1/9 WINTHROP*^ W, 67-38
1/12 LONGWOOD^ W, 78-55
1/16 PRESBYTERIAN*^ W, 73-27
1/18 UNC ASHEVILLE*^ W, 82-40
1/23 at Charleston So.* 5 p.m.
1/25 at Coastal Carolina* 7 p.m.
1/30 at High Point* 4 p.m.

2/1 at Radford* 7 p.m.
2/4 N.C. CENTRAL^ 5 p.m.
2/8 GARDNER-WEBB*^ 7 p.m.
2/15 at Winthrop* 7 p.m.
2/20 COASTAL CAROLINA*^ 4 p.m.
2/22 CHARLESTON SO.*^ 7 p.m.
2/27 at UNC Asheville* 2 p.m.

3/1 at Presbyterian* 7 p.m.
3/5 RADFORD*^ 7 p.m.
3/8 HIGH POINT*^ 7 p.m.

*Big South WBB Championship
(High Point, N.C.)*

3/12 Quarterfinals TBA
3/13 Semifinals# 1/3 p.m.
3/14 Championship Game# 2 p.m.

NCAA Tournament

3/20-21 First Round TBA
3/22-23 Second Round TBA

Home Games in BOLD CAPS

* - Big South Conference Game
All times are Eastern Standard Time
^ - Broadcast on
Flames Sports Network

Team Statistical Leaders

Total Points

Devon Brown - 269/16.8 ppg
Amber Mays - 141/8.8 ppg

Total Rebounds

Devon Brown - 140/8.8 rpg
Avery Warley - 117/7.3 rpg

Total Assists

Amber Mays - 75/4.7 apg
Rachel McLeod - 27/1.7 apg
Dymond Morgan - 27/1.7 apg

Total Steals

Amber Mays - 45/2.8 spg
Devon Brown - 28/1.8 spg

Head Coach Carey Green

Record at Liberty: 249-81 (11th Year)

Career Record: Same

9 Big South Championships: 2000, 2001, 2002, 2003, 2004, 2005, 2006, 2008, 2009
8 NCAA Appearances: 2000, 2001, 2002, 2003, 2004, 2005 (Sweet 16), 2006, 2008, 2009
5-time Big South Coach of the Year: 2000, 2003, 2006, 2008, 2009
3-time VaSID State Coach of the Year: 2003, 2005, 2006

Liberty head women's basketball coach Carey Green, in his 11th season with the Lady Flames, has instilled quite a winning tradition during his tenure at the institution. His teams have averaged more than 23 victories per year, putting his name alongside the nation's premier women's basketball coaches.

Green has accumulated a 249-81 record on the Liberty bench, good for a winning percentage of .755. He currently ranks ninth all-time among NCAA Division I women's basketball coaches in winning percentage, ahead of renowned coaching names like Rutgers' Vivian Stringer, LSU's Van Chancellor and North Carolina's Sylvia Hatchell.

More importantly, Liberty has won the Big South Tournament title and advanced to the NCAA Tournament nine times with Green as head coach. Liberty has totaled 23 or more victories during eight of those years, including the 2004-05 season, which saw the Lady Flames reach the Sweet 16 for the first time in program history.

Green has actually been to the postseason on 21 occasions as a women's basketball coach, a span which includes a dozen years as an assistant coach at Clemson. In all but one of the 21 appearances, he has experienced the NCAA Tournament.

Last season, Green earned his unprecedented fifth Big South Coach of the Year award, after guiding a team decimated by ACL injuries to a 24-9 record and its 12th NCAA Tournament appearance in the last 13 years. The Lady Flames also won the Hokie Hardwood Classic, claiming their first-ever victory over Virginia Tech in the tournament championship game.

At season's end, Green saw his second player selected in the WNBA Draft, as Megan Frazee was taken in the second round by the San Antonio Silver Stars. She then played part of her rookie season alongside 2005 Liberty alum Katie (Feenstra) Mattera in San Antonio.

Rebounding and defense have always been staples of Green-coached teams, and the 2008-09 Lady Flames were no exception. Liberty outrebounded opponents by an average of 12.7 caroms per game, ranking second nationally. The Lady Flames have now been listed among the nation's top five teams in rebounding margin for six straight years. Liberty led the nation in the category in 2003-04 and 2004-05. The Lady Flames also ended the season ranked in the top 10 nationally for scoring defense (second, 52.6 ppg) and field goal percentage defense (sixth, .345).

A key late-season conference victory over High Point in 2006 made Green the winningest coach in Big South Conference history. He is also Liberty's career wins leader.

The 2004-05 year was a special one on Liberty Mountain, for many reasons. A senior-laden Lady Flames team recorded upset wins over No. 4 seed Penn State (78-70) and No. 5 seed DePaul (88-79) in the first two rounds of the NCAA Tournament, becoming just the second team ever to advance to the Sweet 16 as a No. 13 seed. The Lady Flames ended the season with their highest national ranking to date, No. 21 (USA Today/ESPN).

Green's track record shows he has the ability to meet those challenges. The Lady Flames have recorded two wins over UNLV, Virginia and West Virginia and solo victories over No. 19 DePaul, No. 17 Kansas State, No. 25 Penn State, Virginia Tech and Wake Forest during Green's tenure. The upset victory over No. 25 Virginia in 2003 marked Liberty's first win over a Top 25 team.

His record against conference foes is equally impressive. He led the Lady Flames on a Big South record 47-game winning streak and currently owns a .913 (157-15) winning percentage against conference teams. Green has marched through conference play with one or fewer setbacks seven times, while guiding the Lady Flames to two undefeated conference seasons.

Big South Conference Update

(Records Updated Through 1/18)

Overall Standings

	W	L	Pct.
Gardner-Webb	15	3	.833
Liberty	12	4	.750
Coastal Carolina	11	5	.688
High Point	11	7	.611
Charleston So.	9	8	.529
Winthrop	6	11	.353
Radford	5	11	.312
UNC Asheville	5	13	.278
Presbyterian	2	14	.125

Conference Standings

	W	L	Pct.
Gardner-Webb	4	1	.800
High Point	4	1	.800
Radford	4	1	.800
Liberty	3	1	.750
Coastal Carolina	2	2	.500
Charleston So.	1	3	.250
Presbyterian	1	3	.250
Winthrop	1	4	.200
UNC Asheville	1	5	.167

Upcoming Schedule

Saturday, Jan. 23

Radford at Coastal Carolina	2 p.m.
Gardner-Webb at Winthrop	4 p.m.
High Point at Presbyterian	5 p.m.
Liberty at Charleston So.	5 p.m.

Monday, Jan. 25

High Point at UNC Asheville	7 p.m.
Radford at Charleston So.	7 p.m.
Gardner-Webb at Presbyterian	7 p.m.
Liberty at Coastal Carolina	7 p.m.

Tuesday, Jan. 26

Winthrop at Longwood	7 p.m.
----------------------	--------

Saturday, Jan. 30

UNC Asheville at Winthrop	1:30 p.m.
Liberty at High Point	4 p.m.
Coastal Carolina at G.-Webb	4:30 p.m.
Charleston So. at Presbyterian	5 p.m.

Monday, Feb. 1

Coastal Carolina at Presbyterian	7 p.m.
Liberty at Radford	7 p.m.
Charleston So. at Winthrop	7 p.m.

Thursday, Feb. 4

N.C. Central at Liberty	5 p.m.
--------------------------------	---------------

Saturday, Feb. 6

High Point at Coastal Carolina	2 p.m.
Gardner-Webb at Radford	3 p.m.
Winthrop at Presbyterian	5 p.m.
UNC Asheville at Charleston So.	5 p.m.

Monday, Feb. 8

UNC Asheville at Coastal Car.	7 p.m.
High Point at Charleston So.	7 p.m.
Gardner-Webb at Liberty	7 p.m.



Scouting Charleston Southern

The Charleston Southern Lady Buccaneers rely heavily upon the three-point shot, attempting more than 46 percent of their field goals from behind the arc. CSU has made more triples (150) this season than Liberty has attempted (147) and ranks No. 3 nationally in three-pointers made. The Lady Buccaneers made 17 three-pointers against No. 4 North Carolina on Nov. 29, keeping the score close before dropping a 76-67 decision to the Tar Heels.

Leading the outside shooting barrage is Katie Tull, a 5-9 junior guard. She ranks No. 3 nationally with 64 three-pointers and is the Big South's leading scorer at 17.0 ppg. Backcourt mate Kelsey Wasmer, a 5-10 redshirt junior, set Charleston Southern's single-season record with 76 triples in 2008-09. She has hit 31 three-pointers so far this season.

The Buccaneers have also received strong play from Helen Terry, a 5-5 freshman point guard. She ranks No. 5 in the Big South in assists (3.8 apg) and No. 9 in steals (1.8 spg). Ali Schwagmeyer is CSU's top rebounder, pulling down 6.6 boards per contest.

The Coaching Matchup

Liberty Head Coach Carey Green is in his 11th season with the Lady Flames, and has led his team to nine Big South titles. A five-time Big South Coach of the Year, Green owns a 249-81 career record and is the all-time wins leader at Liberty and among Big South women's basketball coaches. His career winning percentage (.755) ranked ninth all-time among NCAA Division I women's basketball coaches at the season's outset. Green is 23-0 all-time versus Charleston Southern.

Julie Goodenough is 39-68 in her fourth season at Charleston Southern and 249-183 in her 16th overall season as a collegiate head coach. Previous to her time with the Lady Buccaneers, Goodenough was Oklahoma State's head coach for three seasons (2003-05). She is 0-7 all-time versus Liberty.

Liberty-Charleston Southern Series Notes

Liberty is 40-5 in the head-to-head series with Charleston Southern, after defeating the Lady Buccaneers three times during the 2008-09 campaign. The Lady Flames have recorded 25 straight wins over CSU, by an average of 24.3 ppg.

Last season, the Lady Flames defeated the Lady Buccaneers by a 76-51 count Jan. 24, 2009 at Liberty, by an 81-59 score Feb. 23, 2009 at CSU and by a 74-64 margin March 13, 2009 in the Big South Championship quarterfinals at High Point.

Liberty shot 61.3 percent from the floor during its three matchups with Charleston Southern last season, highlighted by a school-record 70.2 percent (33-of-47) effort in the meeting at CSU Field House.

Individually, Megan Frazee starred for the Lady Flames, averaging 22.0 ppg, 10.0 rpg and 5.0 apg against Charleston Southern. Fellow 2008-09 seniors Moriah Frazee (12.7 ppg) and Rachel Hammond (10.3 ppg) also averaged double figures versus CSU.

The Lady Buccaneers made 8.7 three-pointers per game versus Liberty a season ago, paced by Katie Tull's 10 triples in the three contests.

Charleston Southern's last win over Liberty was a 66-60 decision at the CSU Field House, Jan. 18, 1999. Katie LaRue paced the Lady Buccaneers with 14 points.

Liberty.....Statistical Comparison..... Charleston So.

12-4	Record	9-8
48.4	Field Goal Percentage	38.4
33.3	Opponent Field Goal Percentage	39.6
33.3	Three-Point Field Goal Percentage	30.7
3.1	Three-Pointers Made Per Game	8.8
64.1	Free Throw Percentage	67.8
41.6	Rebound Average	40.8
26.4	Opponent Rebound Average	41.6
+15.2	Rebound Differential	-0.8
67.8	Points Per Game	69.4
48.6	Points Allowed Per Game	65.2
+19.3	Point Differential	+4.2

NCAA Top 25 Polls

AP Top 25

1) Connecticut (17-0).....	1,000 pts.
2) Stanford (15-1)	960
3) Tennessee (16-1)	912
4) Notre Dame (15-1)	852
5) Ohio State (19-1).....	836
6) Duke (15-2)	794
7) Nebraska (16-0)	784
8) Georgia (17-1).....	677
9) Texas A&M (14-2).....	639
10) Baylor (14-3).....	635
11) Xavier (12-3).....	525
12) Oklahoma State (15-2).....	524
13) Oklahoma (12-4)	511
14) North Carolina (14-3).....	472
15) Florida State (16-3)	449
16) West Virginia (17-1).....	432
17) Green Bay (16-0).....	416
18) LSU (13-3).....	398
19) Georgetown (15-2)	248
20) Texas (12-5)	234
21) Vanderbilt (13-5).....	133
22) Georgia Tech (15-4)	126
23) TCU (13-4)	79
24) Vermont (14-3)	59
25) Virginia (11-5).....	51

2009-10 Opponents in Bold

ESPN/USA Today Coaches Top 25

1) Connecticut (18-0).....	775 pts.
2) Stanford (15-1)	740
3) Tennessee (16-1)	700
4) Ohio State (19-1).....	658
5) Notre Dame (15-1)	655
6) Nebraska (16-0)	614
7) Duke (15-3)	548
8) Georgia (17-1).....	535
9) Texas A&M (14-2).....	499
10) Xavier (12-3).....	472
11) West Virginia (17-1).....	463
12) Baylor (14-3).....	444
13) Oklahoma (12-4)	363
14) Green Bay (16-0).....	344
15) North Carolina (14-3).....	333
16) Florida State (16-3)	332
17) Oklahoma State (15-2).....	304
18) Georgetown (15-2)	304
19) LSU (13-3).....	253
20) Vanderbilt (13-5).....	137
21) Iowa State (13-3).....	116
22) Virginia (12-5).....	100
23) Texas (12-5)	89
24) TCU (13-4)	52
25) Kentucky (14-3).....	46

2009-10 Opponents in Bold

Battle of Strengths

Saturday's game will match up Charleston Southern, which ranks No. 3 nationally in three-pointers made per game (8.8), with Liberty, which is the national leader in three-point field goal percentage defense (.247).

Bombs Away!

Not usually known for its outside shooting ability, Liberty connected on a season-high nine three-pointers during Monday's win over UNC Asheville. The Lady Flames, who shot 52.9 percent from beyond the arc, got two triples apiece from Devon Brown, Amber Mays, Rachel McLeod and LaKendra Washington.

Liberty had not made nine triples in a game since sinking 10 three-pointers in a Feb. 18, 2008 victory over Charleston Southern at the Vines Center.

Liberty Versus the Big South Conference

Liberty has enjoyed a considerable amount of success versus Big South Conference opposition, since joining the league in time for the 1991-92 season. The Lady Flames have won the conference tournament 12 times and captured 11 Big South regular-season championships.

Liberty is 230-68 (.772) all-time against Big South opponents, including 194-62 in regular-season matchups and 36-6 in Big South Championship tilts. During Carey Green's tenure as head coach, the Lady Flames are 157-15 (.913) when facing Big South foes.

New Year's Resolution

Liberty owns a 160-106 all-time record in January contests, including a 76-9 mark under head coach Carey Green. The Lady Flames' 70-65 setback at Gardner-Webb on Jan. 2 snapped a streak of 17 consecutive January wins for the Lady Flames.

Liberty is scheduled to play nine games this January, including five contests at the Vines Center. The Lady Flames, 5-1 so far this month, currently own a 42-game home winning streak during January, since a 77-72 setback versus Elon, Jan. 13, 2000.

100 and Counting

After limiting UNC Asheville to 27.5 percent shooting from the floor Monday evening, the Lady Flames have now held 100 consecutive opponents under 50 percent field goal shooting. The last Liberty foe to sink half of its field goal attempts was Marist, at the Maryland Terrapin Classic on Dec. 29, 2006.

Liberty has held its first 16 opponents to 48.6 ppg and 33.3 percent shooting from the field. The Lady Flames rank in the top 10 nationally in both categories.

Opportunity for a Milestone

Head coach Carey Green's next victory will be No. 250 of his 11-year coaching career, and his first two chances to reach the milestone will come at Charleston Southern and Coastal Carolina, Saturday and Monday.

Interestingly, Green's 100th win came at Coastal Carolina (Jan. 17, 2004), his 150th win happened at home versus Charleston Southern (Jan. 14, 2006) and his 200th victory was achieved at Charleston Southern (Jan. 19, 2008).

A Look Back

Liberty opened play in the decade of the 2010s Jan. 2 at Gardner-Webb, after closing out the most successful decade in program history Dec. 29 at No. 21/23 Virginia.

-- Liberty went 238-75 (.760) during the 2000s, including a 154-14 (.917) mark against Big South Conference opponents.

-- The Lady Flames won nine Big South Conference titles and made nine NCAA Tournament appearances, including a run to the "Sweet 16" in 2005.

-- Three different Lady Flames combined to win six Big South Player of the Year awards: Katie Feenstra (2003, 2004 and 2005), Megan Frazee (2008 and 2009) and Sharon Wilkerson (2000).

Liberty in the Big South Stats
(Through Games of 1/18)

Team

Scoring Offense (2nd)	67.8 ppg
Scoring Defense (1st)	48.6 ppg
Scoring Margin (1st)	+19.2 ppg
Free Throw Pct. (7th)641
Field Goal Pct. (1st)484
Field Goal Pct. Defense (1st) ..	.333
3-Pt. FG Pct. (T-3rd)333
3-Pt. FG Pct. Defense (1st)247
3-Pt. FG Made (8th)	3.1/game
Rebounds (1st)	41.6 rpg
Opp. Rebounds (1st)	26.4 rpg
Rebounding Margin (1st)	+15.2 rpg
Offensive Rebounds (1st) ..	15.9 rpg
Defensive Rebounds (4th) ..	25.8 rpg
Blocked Shots (6th)	2.7 bpg
Assists (2nd)	14.2 apg
Steals (1st)	12.0 spg
Turnover Margin (6th)	-0.06
Asst./TO Ratio (4th)	0.66

Individual

Scoring

Devon Brown (2nd)	16.8 ppg
Amber Mays (20th)	8.8 ppg
Avery Warley (21st)	8.6 ppg
Jelena Antic (22nd)	8.5 ppg

Rebounding

Devon Brown (2nd)	8.8 rpg
Avery Warley (6th)	7.3 rpg
Jelena Antic (18th)	5.3 rpg

Offensive Rebounds

Avery Warley (2nd)	3.4 rpg
Jelena Antic (6th)	2.6 rpg
Devon Brown (7th)	2.6 rpg

Defensive Rebounds

Devon Brown (1st)	6.2 rpg
Avery Warley (T-12th)	3.9 rpg

Field Goal Pct.

Devon Brown (2nd)474
-------------------------	------

Assists

Amber Mays (1st)	4.7 apg
------------------------	---------

Free Throw Pct.

Devon Brown (4th)746
-------------------------	------

Steals

Amber Mays (2nd)	2.8 spg
Devon Brown (10th)	1.8 spg
Dymond Morgan (T-13th) ..	1.6 spg
L. Washington (T-13th)	1.6 spg

Three-Point FG Pct.

Devon Brown (4th)381
-------------------------	------

Three-Point FG Made

Devon Brown (T-7th)	1.5/game
---------------------------	----------

Blocked Shots

Devon Brown (9th)	0.7 bpg
Carra Coy (10th)	0.7 bpg

Homecoming for Coy

Saturday's game will mark a homecoming for Liberty freshman Carra Coy, who hails from Summerville, S.C., and played her high school basketball at Northwood Academy, located just outside Charleston.

National Leader

Liberty, which has outrebounded 15 of its 16 opponents this season, ranks as the nation's No. 1 team in rebound margin, through games of Jan. 17. The Lady Flames, who own a +15.2 rebound margin, have ranked among the nation's top five rebounding squads for six consecutive seasons. Liberty led the nation in rebound margin in back-to-back years, in 2003-04 and 2004-05.

Home Sweet Home(stand)

After not playing a home game in a full month, Liberty thrived during its recent homestand at the Vines Center, which concluded Monday night. The Lady Flames went 5-0 during the homestand, winning their contests by an average of 29.2 ppg and outrebounding foes by 20.8 rpg. Devon Brown averaged 15.8 ppg and 9.0 rpg for the homestand, while fellow freshman Jelena Antic posted 12.6 ppg.

Antic Repeats

Jelena Antic claimed her second consecutive Big South Freshman of the Week certificate on Tuesday, after averaging 13.3 ppg and 5.7 rpg in a trio of Liberty victories. She also shot 78.3 percent (18-of-23) from the field for the week, making 10 consecutive field goals at one point.

She is the first Lady Flame to win back-to-back Big South Freshman of the Week honors since Feb. 12 and 19, 2002, when Kristal Tharp accomplished the feat.

Double-Double x 2

Freshmen Jelena Antic (19 points, 10 rebounds) and Devon Brown (16 points, 13 rebounds) both crafted double-doubles during a Jan. 12 home win over Longwood. It marked the first time multiple Lady Flames have notched a double-double in the same game since Nov. 24, 2007. That day, sisters Megan Frazee (19 points, 12 rebounds) and Moriah Frazee (16 points, 11 rebounds) accomplished the feat in a 70-61 win over Houston, as part of the National City Xavier Invitational.

Cleaning the Glass

The Lady Flames claimed a season-high 26 offensive rebounds versus Longwood on Jan. 12, leading to 19 second-chance points. Remarkably, Liberty racked up its 26 boards in just 36 non-deadball rebounding opportunities at the offensive end.

The last time Liberty grabbed at least 26 offensive caroms in a game was Jan. 29, 2008, in a 76-57 home Big South victory over High Point. Rebecca Lightfoot's seven offensive boards highlighted the Lady Flames' total of 27 offensive boards.

70 is the Magic Number

Liberty is 7-0 this season when scoring at least 70 points in a game, extending a lengthy streak. The Lady Flames have now won 89 consecutive games when reaching the 70-point plateau offensively.

No. 24 Boston College was the most recent team to defeat Liberty when the Lady Flames tallied 70 points. The Eagles dealt the Lady Flames a 74-70 overtime loss, Dec. 6, 2003 at the Brown Classic.

Liberty has not dropped a game when scoring 70 points in regulation since Dec. 4, 2002. That day, the Lady Flames fell at Richmond by an 88-74 count.

Big Wins, Tight Losses

The Lady Flames' 12 victories this season have come by an average of 28.2 points. Liberty's tightest win was a 57-51 home victory over North Carolina A&T on Jan. 5.

Meanwhile, Liberty has lost its four games by a total of 30 points. James Madison posted the widest margin of victory over the Lady Flames, defeating Liberty 60-50, Dec. 1 at the Vines Center.

Miscellaneous Stats For the 2009-10 Lady Flames

Team Scoring Leaders

Devon Brown	9 times
Jelena Antic	3 times
Amber Mays	3 times
Avery Warley	2 times
Kylee Beecher	1 time
Danika Dale	1 time
LaKendra Washington	1 time

20-Point Games

Devon Brown	4 times
LaKendra Washington	1 time

Team Rebounding Leaders

Devon Brown	10 times
Avery Warley	4 times
Jelena Antic	3 times
Danika Dale	1 time

10-Rebound Games

Devon Brown	6 times
Avery Warley	4 times
Jelena Antic	2 times

Team Assist Leaders

Amber Mays	12 times
Jelena Antic	2 times
Rachel McLeod	2 times
Dymond Morgan	2 times
Devon Brown	1 time
Avery Warley	1 time

5-Assist Games

Amber Mays	7 times
Dymond Morgan	2 times
Rachel McLeod	1 time

Team Steal Leaders

Amber Mays	7 times
LaKendra Washington	4 times
Devon Brown	3 times
Dymond Morgan	3 times
Kylee Beecher	2 times
Danika Dale	1 time
Rachel McLeod	1 time
Avery Warley	1 time

3-Steal Games

Amber Mays	9 times
Devon Brown	5 times
Dymond Morgan	4 times
LaKendra Washington	4 times
Jelena Antic	2 times
Danika Dale	2 times
Rachel McLeod	1 time
Avery Warley	1 time

Team Blocked Shot Leaders

Devon Brown	7 times
Carra Coy	5 times
Avery Warley	5 times
Kylee Beecher	3 times
Danika Dale	3 times
Jelena Antic	1 time
LaKendra Washington	1 time

3-Block Games

Avery Warley	1 time
--------------	--------

Including Ties

A Whole Lot of Winning Streaks

The Lady Flames have won five consecutive games, which marks their second five-game winning streak of the 2009-10 season.

Liberty has now enjoyed 18 winning streaks of at least five games during Carey Green's 11 seasons as head coach.

Who Stole My Ball?

Liberty racked up 19 steals during last Saturday's victory over Presbyterian College, as nine Lady Flames recorded a theft, paced by Dymond Morgan's five. It was Liberty's most steals in a game since a 19-steal effort versus Charleston Southern, Jan. 2, 2003.

Amber Accumulates Assists

Senior Amber Mays tallied a career-high 10 assists during a Jan. 9, 67-38 victory over Winthrop, the most by a Lady Flame since Nov. 22, 2002. That evening, Daina Staugaitiene dished out 10 helpers in a 90-35 season-opening win over Morgan State.

Mays is currently averaging a Big South-leading 4.7 assists per contest on the year. No Liberty point guard has averaged that many assists for an entire season since 1997-98, when Sarah Wilkerson distributed 5.1 apg.

Tournament Tested

Liberty has played in a pair of tournaments this season, the Navy Classic (Nov. 20-21) and the Marriott Cavalier Classic (Dec. 28-29). The Lady Flames won the Navy Classic, while finishing second at this week's Marriott Cavalier Classic.

Liberty has won four regular-season tournament championships during the last three years, a list which also includes the 2008 National City Xavier Invitational, the 2008 UNLV Lady Rebel Christmas Classic and the 2009 Hokie Hardwood Classic.

Wanted for Theft

Liberty has employed an aggressive, trapping defense this season, helping the Lady Flames pace the Big South with 12.0 steals per contest. Liberty has tallied double-digit steals 13 times in its first 16 games of the year, after doing so only nine times during the entire 2008-09 campaign. Leading the way is senior Amber Mays, who has accounted for nearly one-quarter (45) of the Lady Flames' 192 thefts.

The Container is Half Full

This season, the Lady Flames are 6-0, when shooting 50 percent or higher from the field. Liberty is now 65-0 under head coach Carey Green, when the Lady Flames sink at least half of their field goals.

Liberty Versus Non-Conference Opposition

Liberty is 9-3 against non-conference opponents this season, boosting its all-time non-conference ledger to 275-296. The Lady Flames have won 16 of their last 19 non-Big South tilts at the Vines Center.

Liberty's best-ever season against non-conference foes came in 1997-98, when the Lady Flames went 14-1 outside the Big South. Liberty's lone non-conference setback that season came to eventual national champion Tennessee in the first round of the NCAA Tournament.

Painting a Masterpiece

Last season, Liberty regularly controlled the area around the basket, outscoring 29 of 33 opponents in the "points in the paint" statistical category.

This year, the Lady Flames are off to an outstanding start in racking up "points in the paint" once again. Liberty has outscored all 16 opponents inside the paint in 2009-10, by an average margin of 25 points (40.5 to 15.5).

There is Only One

Starting point guard Amber Mays is the only senior on this year's team roster. Liberty has not had so few seniors since the 2005-06 Lady Flames played the season without a single senior.

Liberty's Record ...

When Liberty controls the tip	9-0
When opponent controls the tip.....	3-4
Played at home.....	8-1
Played on the road	2-3
Played at a neutral site	2-0
Played a team with a .500+ record.....	5-4
Played a team with a .500 record.....	2-0
Played a team with a below .500 record.....	5-0
When Liberty leads at the half	11-0
When opponent leads at the half.....	1-3
When there is a tie at the half.....	0-1
When Liberty leads with 5:00 left.....	12-0
When opponent leads with 5:00 left	0-4
When there is a tie with 5:00 left	0-0
When Liberty leads with 1:00 left.....	12-0
When opponent leads with 1:00 left	0-4
When there is a tie with 1:00 left	0-0
When Liberty outrebounds opponent	12-3
When opponent outrebounds Liberty	0-1
When the teams' rebound totals are equal.....	0-0
When Liberty shoots 50% or better (FG).....	6-0
When Liberty shoots less than 50% (FG).....	6-4
When Liberty outshoots its opponents	11-2
When opponents outshoot Liberty	1-2
When the teams shoot the same pct	0-0
When Liberty shoots more 3-pointers.....	4-1
When opponent shoots more 3-pointers	8-3
When same amount of 3-pointers shot.....	0-0
When Liberty shoots more free throws.....	10-0
When opponent shoots more free throws.....	2-4
When same number of free throws taken.....	0-0
When opponent shoots 50% or better (FG).....	0-0
When opponent shoots less than 50% (FG).....	12-4
When Liberty has more turnovers	5-3
When opponent has more turnovers	6-1
When turnovers are the same	1-0
When Liberty blocks more shots	8-1
When opponent blocks more shots	1-2
When blocks are the same	3-1
When Liberty has more steals	9-3
When opponent has more steals.....	2-1
When steals are the same.....	1-0
When Liberty bench outscores opponent.....	9-1
When opponent bench outscores Liberty	3-3
When both benches score the same	0-0
When Liberty scores 50 or fewer points	0-1
When Liberty scores 51-60 points	3-1
When Liberty scores 61-70 points	3-2
When Liberty scores 71-80 points	3-0
When Liberty scores 81 or more points.....	3-0
When the game is decided by 1-5 points	0-1
When the game is decided by 6-10 points	1-3
When the game is decided by 11+ points.....	11-0
November Games	5-0
December Games	2-3
January Games	5-1
February Games.....	0-0
March Games	0-0
Sunday	0-0
Monday	2-0
Tuesday.....	3-3
Wednesday.....	0-0
Thursday.....	0-0
Friday.....	2-0
Saturday	5-1
When wearing white uniforms	10-1
When wearing red uniforms.....	2-0
When wearing blue uniforms.....	0-3

All-Time Winningest Coaches

Through 10 seasons at Liberty, head coach Carey Green remains in elite company. He ranks as the ninth-winningest NCAA Division I women's basketball coach of all time, entering the 2009-10 campaign with a .755 career winning percentage. Here is a look at the top 15 coaches on the all-time list.

Coach, Team(s)	Yrs.	Won	Lost	Pct.
1) Leon Barmore, Louisiana Tech	20	576	87	.867
2) Geno Auriemma, Connecticut	24	696	122	.851
3) Pat Summitt, Tennessee	35	1,005	193	.839
4) Tara VanDerveer, Idaho, Ohio St., Stanford	30	757	193	.797
5) Bill Sheahan, Mt. St. Mary's	17	372	104	.782
6) Robin Selvig, Montana	31	725	204	.780
7) Gail Goestenkors, Duke, Texas	17	439	124	.780
8) Wes Moore, Maryville, F. Marion, Chattanooga	20	466	132	.779
9) Carey Green, Liberty	10	237	77	.755
10) Andy Landers, Georgia	30	725	239	.752
11) Marsha Sharp, Texas Tech	24	571	189	.751
12) C. Vivian Stringer, Cheyney, Iowa, Rutgers	38	825	280	.747
13) Jody Conradt, Sam Houston St., UTA, Texas	38	900	309	.744
14) Sylvia Hatchell, F. Marion, North Carolina	34	812	282	.742
15) Van Chancellor, Mississippi, LSU	21	489	171	.741

Longest-Tenured Assistant Coaches

The 2009-10 season is Heather Stephens' seventh campaign as an assistant coach on Carey Green's coaching staff. This season, she snapped a tie with Jeri (Wiley) Porter as the longest-tenured assistant coach in Liberty women's basketball history. Porter is now the head coach at George Mason.

The Lady Flames have gone 158-49 and won five Big South titles during Stephens' tenure and made the "Sweet 16" of the 2005 NCAA Tournament.

Same Number, New Face

A new Lady Flame is wearing No. 40 this year, after Megan Frazee donned the number for the last four seasons. Among many other accomplishments and accolades, Frazee graduated as the No. 2 scorer (1,883 points) and No. 3 rebounder (951 rebounds) in program history, leaving some very big shoes to fill.

Liberty's new No. 40, Devon Brown, has worn the number proudly so far. The red-shirt freshman from Waynesboro, Va. is averaging 16.8 ppg and 8.8 rpg, pacing the Lady Flames in both categories. She also ranks second in the Big South in scoring. No freshman has finished the year as the conference's leading scorer since Liberty's Elena Kisseleva in 1996-97.

Tallest Since Feenstra

Carra Coy, one of three new freshmen on this year's team, stands 6-6. That makes the Summerville, S.C., native the tallest Lady Flame since 6-8 Katie Feenstra graduated after the 2004-05 campaign.

International Flavor

Freshman Jelena Antic hails from Skopje, Macedonia and sophomore Tolu Omotola was born in London, England, giving Liberty international players on its roster for the 16th consecutive season. The last time the Lady Flames' roster consisted solely of American-born players was the 1993-94 campaign. Every Carey Green-coached team at Liberty has featured at least one international player.

Local Flavor

Even though Jelena Antic was born in Macedonia, she played high school basketball at Liberty Christian Academy in Lynchburg, Va. She is one of four current Lady Flames who attended high school within 70 miles of the Liberty campus, joining Kylee Beecher (Hidden Valley), Devon Brown (Waynesboro) and Brittany Campbell (Brookville).

Top 50 Scorers in Liberty History

1. Elena Kisseleva	2,154
2. Megan Frazee	1,883
3. Katie Feenstra	1,845
4. Sharon Wilkerson	1,733
5. Sarah Wilkerson	1,331
6. Ginny Holloway	1,180
7. Sharon Snodgrass	1,169
8. Kristal Tharp	1,161
9. Moriah Frazee	1,147
10. Pam Wilder	1,120
11. Brenda Gunsallus	1,078
12. Cynthia Thomson	1,055
13. Dawn Coleman	908
14. Daina Staugaitiene	846
15. Sandra Bridges	822
16. Reggie Gomes	810
17. Kristi Mercer	809
18. Lil Cooper	808
19. Michelle Fricke	803
20. Stacey White	801
21. Malynda Keck	792
22. Sheila Ford	761
23. Pam Stanfield	752
24. Michelle Wymys	748
25. Sharon Freet	727
26. Jeri Wiley	717
27. Annetta Paraham	705
28. Trish Harris	697
29. Allyson Fasnacht	672
30. Courtney Watkins	669
31. Rachel Hammond	663
32. Harriett Blair	651
33. Meribeth Feenstra	628
34. Monique Leonard	624
35. Rachel Young	610
36. Kristina Palaimaite	600
37. Carla Weaver	594
38. Theresa Bream	589
39. Anna Barrington	579
40. Molly Frazee	571
41. Missy Roberts	560
42. Erin Wall	551
43T. Beth Ralph	547
43T. Irene Sloof	547
45. Angie Johnson	545
46. Kathy Wooten	543
47. Stephanie Walker	524
48. Jennifer Fairfax	513
49. Trena Criss	509
50. Lynn Beardslee	497
Top Current Players:	
Avery Warley	404
Amber Mays	386
Rachel McLeod	353

Gaining Some National Recognition

Liberty earned a single vote in the most recent ESPN/USA Today Coaches Top 25 Poll, released on Dec. 8, marking the second straight week the Lady Flames received a vote.

Liberty also collected one vote in the AP Top 25 Poll, released on Nov. 30.

Turning Up the Heat in the Furnace

The 2009-10 campaign is the 18th season the Liberty women's basketball team has called the Vines Center its full-time home. The "Furnace" has served as a favorable venue for the Lady Flames over the years. Liberty is 196-52 (.790) all-time at the Vines Center, including 10-2 last season.

The Lady Flames are 8-1 to start this year's 15-game home schedule and are 104-10 in their last 114 home games, dating back to the 2001-02 season.

Noting the 90s

The Lady Flames scored a season-high 90 points during their Nov. 28 victory at Lafayette. It was the 10th time Liberty has reached the 90-point plateau under head coach Carey Green.

The Lady Flames' most recent 90-point outburst came during a 92-68 home win over St. Paul's, Dec. 13, 2008.

Liberty had not scored 90 points in a road game since a 94-75 triumph at Richmond, Dec. 4, 1999 in the opening round of the Wachovia Women's Invitational.

Corralling the Caroms

Liberty has ranked among the nation's top five teams in rebounding margin for six consecutive seasons, including a No. 2 listing in 2008-09. Even though two of the top three rebounders from last year's squad graduated, the Lady Flames have hit the boards hard again this season.

Liberty has won the rebounding battle in 15 of its first 16 games this season, by a nation-high average of 15.2 boards per contest. Leading the way are redshirt freshman Devon Brown (8.8 rpg) and redshirt sophomore Avery Warley (7.3 rpg).

Lack of Overtime

Liberty has played only one overtime game in its last 195 outings, a 64-62 setback at High Point on Jan. 20, 2007. Since that contest at the Millis Center, the Lady Flames have played 94 consecutive games without needing extra time.

The Lady Flames' most recent overtime victory came on Jan. 6, 2004, when Liberty defeated American, 76-72, on the road in double overtime. No current Lady Flame has won an overtime contest in college.

Liberty's most recent overtime contest at the Vines Center was a memorable one. The Lady Flames defeated Virginia, 77-69, in overtime on Nov. 26, 2002, to claim their first-ever win over the Cavaliers. It also marked Liberty's first win over a ranked opponent, as Virginia entered the game with a No. 25 national ranking.

Big Shoes to Fill

Seven seniors graduated from last year's Liberty team, which went 24-9 and won its second consecutive Big South title. Alexandria Bream, Megan Frazee, Molly Frazee, Moriah Frazee, Rachel Hammond, Rebecca Lightfoot and Jessica Nelson accounted for 57.0 percent of the Lady Flames' points and 41.7 percent of the team's rebounds in 2008-09.

Headlining the group was Megan Frazee, who claimed the Big South Player of the Year and Big South Championship MVP awards.

Youth will be Served

Underclassmen have stepped up to fill the void left by the seven seniors who graduated from the 2008-09 Liberty roster. Through the first 16 games of the 2009-10 campaign, the Lady Flames' freshmen and sophomores are accounting for 72.1 percent of the team's points and 74.5 percent of Liberty's rebounds.

The Lady Flames' top five rebounders are all either freshmen or sophomores, as are four of the top five scorers.

Top 50 Rebounders in Liberty History

1. Katie Feenstra	1,033
2. Sharon Snodgrass	1,026
3. Megan Frazee	951
4. Elena Kisseleva	876
5. Carla Weaver	859
6. Sharon Wilkerson	625
7. Moriah Frazee	601
8. Sharon Freet	590
9. Kristina Palaimaite	586
10. Pam Stanfield	583
11. Lil Cooper	578
12. Annetta Paraham	556
13. Meribeth Feenstra	547
14. Theresa Bream	536
15. Jennifer Fairfax	533
16T. Wendy Johnson	532
16T. Malynda Keck	532
18. Pam Wilder	529
19. Kathy Wooten	504
20. Michelle Fricke	500
21. Helen Gomes	493
22. Trish Harris	484
23. Flori Willie	478
24. Michelle Wyms	472
25. Kristal Tharp	466
26. Stacey White	456
27. Lynn Beardslee	450
28. Karolina Piotrkiewicz	445
29. Sarah Wilkerson	442
30. Erin Wall	423
31T. Ginny Holloway	420
31T. Daina Staugaitiene	420
33. Dawn Coleman	405
34. Jayne Mottershead	401
35. Sheila Ford	395
36. Angie Johnson	389
37. Avery Warley	373
38. Trena Criss	370
39. Erma Williams	357
40. Rebecca Lightfoot	351
41. Courtney Watkins	327
42. Crystal Peace	320
43. Molly Frazee	319
44. Monique Leonard	315
45. Harriett Blair	310
46. Reggie Gomes	308
47. Jamie Feagin	303
48. Rachel Young	301
49. Roli-Ann Nikagbatse	296
50T. Rachel Hammond	287
50T. Beth Ralph	287

Other Current Players:

Kylee Beecher	194
Rachel McLeod	163
Devon Brown	140

Big South Preseason Favorites

The Lady Flames were tabbed to repeat as Big South Conference champions in the preseason coaches and media poll, with High Point voted a conference co-favorite. Liberty claimed nine of 20 first-place votes and earned 160 total points, which was the same point total the Panthers received.

2009-10 Big South Women's Basketball Preseason All-Conference Team

Jurica Hargraves, High Point, Jr., G - Preseason Player of the Year
 Mackenzie Maier, High Point, Jr., F
 Margaret Roundtree, Gardner-Webb, Sr., F
 Dominique Hudson, Gardner-Webb, Jr., G
 Kymesha Alston, Radford, R-Sr., F

2009-10 Big South Preseason Poll

Team (First-Place Votes)	Total Points
1T) Liberty (9)	160
1T) High Point (7)	160
3) Gardner-Webb (4)	147
4) Coastal Carolina	101
5) Charleston Southern	86
6) Winthrop	84
7) Radford	80
8) UNC Asheville	57
9) Presbyterian	25

Furious Comeback

The Lady Flames fell behind Navy, 20-4, 7:56 into the Navy Classic championship game on Nov. 21. Liberty then outscored the host Midshipmen, 51-23, during the remainder of the game to claim an improbable 55-43 victory.

It was the Lady Flames' largest comeback since Nov. 27, 2001, in a matchup with VCU at the Vines Center. The Rams owned a 38-22 advantage with 18:41 remaining in the second half, before the Lady Flames rallied for a 65-60 victory.

A Tale of Two Halves

Liberty has regularly stepped up its level of play during the second half this season. The Lady Flames are outscoring opponents by an average score of 36.9-25.6 during the final 20 minutes of play, thus far this season.

Liberty is shooting .520 from the field after halftime, while limiting opponents to a .321 second-half field goal percentage.

Freshman of the Week

LaKendra Washington's 21-point, four-steal performance at Lafayette on Nov. 28 was recognized by the Big South Conference on Dec. 1. The freshman guard was named the Big South Freshman of the Week, marking the second consecutive week a Liberty rookie was honored by the Big South.

First Since Frazee

After averaging 21.0 ppg and 10.7 rpg during Liberty's 3-0 week, Devon Brown was honored as Big South Player of the Week on Nov. 24. She became the first Lady Flames freshman to win the award since Megan Frazee captured it twice during her rookie season (Dec. 5, 2005 & Jan. 16, 2006).

National Statistical Rankings

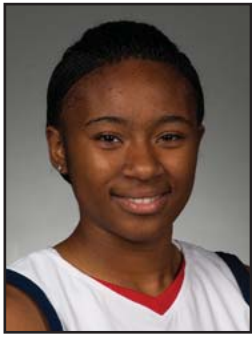
Through the contests of Jan. 17, the Lady Flames were ranked among the NCAA's top 10 teams in five statistical categories. At that juncture, Liberty sat No. 1 in both rebound margin (+14.7) and three-point field goal percentage defense (.240), No. 2 in scoring defense (49.1 ppg), No. 3 in field goal percentage (.486) and No. 6 in field goal percentage defense (.337).

Liberty's 2009-10 Starting Lineups

Game	Date	Opponent	Result	Guard	Guard	Guard	Forward	Forward	Record
1	Nov. 13	WSSU	W, 71-26	Mays	McLeod	Brown	Beecher	Warley	1-0
2	Nov. 17	UNCG	W, 60-42	Mays	McLeod	Brown	Beecher	Warley	2-0
3	Nov. 20	Tulane	W, 63-52	Mays	McLeod	Brown	Beecher	Warley	3-0
4	Nov. 21	Navy	W, 55-43	Mays	McLeod	Brown	Beecher	Warley	4-0
5	Nov. 28	Lafayette	W, 90-55	Mays	McLeod	Brown	Beecher	Warley	5-0
6	Dec. 1	JMU	L, 50-60	Mays	McLeod	Brown	Beecher	Warley	5-1
7	Dec. 5	Glennville St.	W, 86-45	Mays	McLeod	Brown	Beecher	Warley	6-1
8	Dec. 15	Auburn	L, 64-70	Mays	McLeod	Brown	Beecher	Warley	6-2
9	Dec. 28	Cornell	W, 70-40	Mays	McLeod	Brown	Antic	Warley	1-0
10	Dec. 29	Virginia	L, 54-63	Mays	McLeod	Brown	Antic	Warley	1-1
11	Jan. 2	G.-Webb	L, 65-70	Mays	McLeod	Brown	Antic	Warley	1-2
12	Jan. 5	N.C. A&T	W, 57-51	Mays	McLeod	Brown	Antic	Warley	2-2
13	Jan. 9	Winthrop	W, 67-38	Mays	McLeod	Brown	Antic	Warley	3-2
14	Jan. 12	Longwood	W, 78-55	Mays	McLeod	Brown	Antic	Warley	4-2
15	Jan. 16	Presbyterian	W, 73-27	Mays	McLeod	Brown	Antic	Warley	5-2
16	Jan. 18	UNCA	W, 82-40	Mays	McLeod	Brown	Antic	Warley	6-2

Miscellaneous Stats

Date	Opponent	LU Result	LU Big				LU in			Paint		Off TOs		2nd Ch		Bench	
			Lead	Opp Lead	Ties	LC	Lead	Opp Lead	Tied	LU	Opp	LU	Opp	LU	Opp	LU	Opp
Nov. 13	Winston-Salem State	W, 71-26	45	0	0	0	38:11	0:00	1:49	38	12	35	10	13	7	18	15
Nov. 17	UNC Greensboro	W, 60-42	19	2	1	1	35:17	0:18	4:25	40	10	18	14	9	9	10	17
Nov. 20	Tulane	W, 63-52	20	2	1	1	37:33	1:16	1:11	34	18	23	18	9	2	11	9
Nov. 21	Navy	W, 55-43	12	16	0	1	12:24	26:56	0:40	26	12	16	12	16	6	8	11
Nov. 28	Lafayette	W, 90-55	36	0	0	0	39:41	0:00	0:19	64	16	38	22	23	6	34	10
Dec. 1	James Madison	L, 50-60	2	15	1	1	1:53	35:58	2:09	30	24	10	12	13	12	6	19
Dec. 5	Glennville State	W, 86-45	42	0	0	0	39:56	0:00	0:04	64	10	19	17	15	16	34	20
Dec. 15	Auburn	L, 64-70	2	14	2	4	0:54	37:50	1:16	42	20	16	11	6	16	8	25
Dec. 28	Cornell	W, 70-40	36	0	0	0	39:48	0:00	0:12	44	6	22	12	15	6	24	9
Dec. 29	No. 21/23 Virginia	L, 54-63	6	11	6	17	15:09	21:19	3:32	36	28	14	35	14	7	16	21
Jan. 2	Gardner-Webb	L, 65-70	0	13	4	0	0:00	37:52	2:08	34	20	13	21	10	5	20	17
Jan. 5	North Carolina A&T	W, 57-51	14	2	1	2	37:12	1:21	1:27	32	18	21	20	17	0	9	7
Jan. 9	Winthrop	W, 67-38	35	7	2	3	30:52	5:41	3:27	34	12	29	8	10	2	25	21
Jan. 12	Longwood	W, 78-55	24	0	0	0	39:24	0:00	0:36	54	18	27	24	19	11	19	26
Jan. 16	Presbyterian	W, 73-27	49	0	0	0	39:45	0:00	0:15	38	12	39	6	7	4	21	12
Jan. 18	UNC Asheville	W, 82-40	46	0	2	0	37:08	0:00	2:52	38	12	33	12	23	11	33	11



1

LaKendra

Washington

5-8 Freshman Guard

Milwaukee, Wis.

The Hope School

Season/Career Highs

Points - 21

at Lafayette (11-28-09)

FG Made - 9

at Lafayette (11-28-09)

FG Attempts - 12 (Two times)

Most recently, at Lafayette (11-28-09)

3FG Made - 2

vs. UNC Asheville (01-18-10)

3FG Attempts - 6

vs. Winston-Salem State (11-13-09)

FT Made - 2 (Three times)

Most recently, at Lafayette (11-28-09)

FT Attempts - 4 (Two times)

Most recently, at Lafayette (11-28-09)

Rebounds - 5 (Three times)

Most recently, at Virginia (12-29-09)

Assists - 2 (Three times)

Most recently, vs. Cornell (12-28-09)

Steals - 5

vs. Winston-Salem State (11-13-09)

Blocks - 1 (Two times)

Most recently, vs. Cornell (12-28-09)

2009-10 Game-By-Game Statistics

OPPONENT	DATE	MIN	FG-FGA	3FG-FGA	FT-FTA	OFF-DEF-TOT	A	TO	BLK	STL	PTS
Winston-Salem St.	11-13-09	22	4-12	1-6	0-0	0-2-2	1	3	0	5	9
UNC Greensboro	11-17-09	9	0-2	0-2	2-2	0-0-0	0	0	0	1	2
Tulane	11-20-09	10	1-2	0-1	0-0	0-1-1	0	2	1	0	2
Navy	11-21-09	15	2-3	0-0	2-4	0-4-4	0	1	0	0	6
Lafayette	11-28-09	26	9-12	1-2	2-4	0-0-0	2	1	0	4	21
James Madison	12-01-09	8	1-4	0-0	0-0	1-0-1	0	0	0	0	2
Glennville St.	12-05-09	20	4-9	0-0	0-0	1-4-5	2	5	0	2	8
Auburn	12-15-09	11	1-3	0-1	0-0	0-1-1	0	0	0	0	2
Cornell	12-28-09	21	4-10	0-3	1-2	1-4-5	2	3	1	2	9
Virginia	12-29-09	15	2-4	0-0	1-1	3-2-5	1	3	0	2	5
Gardner-Webb	01-02-10	7	0-2	0-0	0-0	0-0-0	0	0	0	1	0
N.C. A&T	01-05-10	14	0-4	0-1	0-0	1-1-2	0	2	0	0	0
Winthrop	01-09-10	17	2-5	1-2	0-0	1-0-1	1	1	0	3	5
Longwood	01-12-10	8	0-2	0-2	1-2	2-0-2	1	4	0	0	1
Presbyterian	01-16-10	20	3-5	0-2	0-0	1-2-3	0	5	0	2	6
UNC Asheville	01-18-10	16	2-6	2-4	0-3	1-0-1	0	2	0	4	6

2009-10 Notes/Highlights

-- Tabbed Big South Freshman of the Week on Dec. 1.

-- Became Liberty's first true freshman to score 20 points in a game since Megan Frazee during the 2005-06 season, when she exploded for 21 points at Lafayette on Nov. 28.

Career Stats

Season	GP	GS	Min	Avg	FG	FGA	Pct	3FG	3FGA	Pct	FT	FTA	Pct	ORB	DRB	TOT	Avg	Asst	TO	Blk	Stl	Pts	Avg
2009-10	16	0	239	14.9	35	85	.412	5	26	.192	9	18	.500	12	21	33	2.1	10	32	2	26	84	5.3



11

Jelena Antic

6-2 Freshman G/F

Skopje, Macedonia

Liberty Christian Academy

Season/Career Highs

Points - 19

vs. Longwood (01-12-10)

FG Made - 8

vs. Longwood (01-12-10)

FG Attempts - 11

vs. Longwood (01-12-10)

3FG Made - 2

at Gardner-Webb (01-02-10)

3FG Attempts - 3

at Auburn (12-15-09)

FT Made - 6

vs. North Carolina A&T (01-05-10)

FT Attempts - 7

vs. North Carolina A&T (01-05-10)

Rebounds - 10 (Two times)

Most recently, vs. Longwood (01-12-10)

Assists - 4

vs. North Carolina A&T (01-05-10)

Steals - 3 (Two times)

Most recently, vs. Presby. (01-16-10)

Blocks - 1 (Two times)

Most recently, vs. N.C. A&T (01-05-10)

2009-10 Game-By-Game Statistics

OPPONENT	DATE	MIN	FG-FGA	3FG-FGA	FT-FTA	OFF-DEF-TOT	A	TO	BLK	STL	PTS
Winston-Salem St.	11-13-09					Did not play					
UNC Greensboro	11-17-09					Did not play					
Tulane	11-20-09					Did not play					
Navy	11-21-09	18	0-4	0-0	0-1	4-1-5	3	1	0	0	0
Lafayette	11-28-09	23	2-5	0-0	0-1	2-2-4	2	2	0	3	4
James Madison	12-01-09	12	0-3	0-1	1-2	0-4-4	0	2	0	0	1
Glenville St.	12-05-09	24	5-8	0-0	2-4	2-8-10	0	6	0	1	12
Auburn	12-15-09	23	2-8	0-3	0-0	2-1-3	1	3	0	1	4
Cornell	12-28-09	21	4-5	1-1	2-2	4-4-8	2	1	0	0	11
Virginia	12-29-09	34	2-7	1-1	0-0	3-0-3	3	1	1	0	5
Gardner-Webb	01-02-10	25	4-6	2-2	0-0	3-2-5	1	1	0	0	10
N.C. A&T	01-05-10	29	4-8	0-0	6-7	1-3-4	4	3	1	1	14
Winthrop	01-09-10	27	4-7	0-1	1-1	3-3-6	1	3	0	1	9
Longwood	01-12-10	30	8-11	0-0	3-5	5-5-10	2	5	0	2	19
Presbyterian	01-16-10	24	7-7	0-0	0-0	1-2-3	1	3	0	3	14
UNC Asheville	01-18-10	18	3-5	1-1	0-0	4-0-4	0	3	0	0	7

2009-10 Notes/Highlights

-- Won her second consecutive Big South Freshman of the Week award on Tuesday, after contributing 13.3 ppg and 5.7 rpg, while shooting 78.3 percent (18-of-23) from the field, during Liberty's 3-0 week.

-- Liberty's first player to win consecutive Big South Freshman of the Week honors since Kristal Tharp did so Feb. 12 and 19, 2002.

-- Previously named Big South Freshman of the Week on Jan. 12, after posting 11.0 ppg, 5.0 rpg and 2.5 apg during wins over North Carolina A&T and Winthrop.

-- Ranks sixth in the Big South in offensive rebounds (2.6 rpg) and first among freshmen.

-- Made her first appearance in the starting lineup, Dec. 28 versus Cornell.

-- Averaging 11.1 ppg and 5.4 rpg since joining the starting lineup.

-- Has made 13 of her last 15 field goal attempts, dating back to the second half of the Longwood game (Jan. 12).

-- Has connected on five of her last six three-pointers, dating back to a Dec. 28 victory over Cornell.

Career Stats

Season	GP	GS	Min	Avg	FG	FGA	Pct	3FG	3FGA	Pct	FT	FTA	Pct	ORB	DRB	TOT	Avg	Asst	TO	Blk	Stl	Pts	Avg
2009-10	13	8	308	23.7	45	84	.536	5	10	.500	15	23	.652	34	35	69	5.3	20	34	2	12	110	8.5



12

Danika Dale

6-1 Sophomore G/F
Fort Hood, Texas
Shoemaker HS

Season Highs

Points - 10

at Gardner-Webb (01-02-10)

FG Made - 4

at Gardner-Webb (01-02-10)

FG Attempts - 6 (Two times)

Most recently, vs. Presby. (01-16-10)

3FG Made - 1 (Four times)

Most recently, vs. Presby. (01-16-10)

3FG Attempts - 3 (Two times)

Most recently, vs. Presby. (01-16-10)

FT Made - 4

vs. Winston-Salem State (11-13-09)

FT Attempts - 4

vs. Winston-Salem State (11-13-09)

Rebounds - 9

vs. Glenville State (12-05-09)

Assists - 3 (Three times)

Most recently, vs. Winthrop (01-09-10)

Steals - 3 (Two times)

Most recently, vs. Glen. St. (12-05-09)

Blocks - 2 (Three times)

Most recently, vs. JMU (12-01-09)

Career Highs

Points - 12

vs. Saint Paul's (12-13-08)

FG Made - 4 (Two times)

Most recently, at G.-Webb (01-02-10)

FG Attempts - 6 (Four times)

Most recently, vs. Presby. (01-16-10)

3FG Made - 2

vs. Auburn (12-07-08)

3FG Attempts - 3 (Four times)

Most recently, vs. Presby. (01-16-10)

FT Made - 4 (Two times)

Most recently, vs. WSSU (11-13-09)

FT Attempts - 9

vs. Saint Paul's (12-13-08)

Rebounds - 9

vs. Glenville State (12-05-09)

Assists - 6

vs. Presbyterian (03-02-09)

Steals - 4

vs. Saint Paul's (12-13-08)

Blocks - 2 (Three times)

Most recently, vs. JMU (12-01-09)

2009-10 Game-By-Game Statistics

OPPONENT	DATE	MIN	FG-FGA	3FG-FGA	FT-FTA	OFF-DEF-TOT	A	TO	BLK	STL	PTS
Winston-Salem St.	11-13-09	23	1-5	0-2	4-4	2-5-7	3	3	2	3	6
UNC Greensboro	11-17-09	16	0-3	0-0	0-0	1-3-4	0	1	2	2	0
Tulane	11-20-09	11	0-1	0-0	0-0	1-0-1	1	1	0	2	0
Navy	11-21-09	3	0-2	0-2	0-0	1-1-2	1	0	0	0	0
Lafayette	11-28-09	15	2-2	1-1	1-2	0-4-4	1	0	0	0	6
James Madison	12-01-09	21	1-4	1-1	0-0	0-5-5	1	2	2	0	3
Glenville St.	12-05-09	19	2-3	0-0	2-3	1-8-9	3	4	0	3	6
Auburn	12-15-09	4	0-1	0-0	0-0	0-0-0	0	1	0	0	0
Cornell	12-28-09	19	2-4	0-1	1-2	3-4-7	2	0	0	0	5
Virginia	12-29-09	14	1-6	0-3	1-2	1-3-4	0	4	0	0	3
Gardner-Webb	01-02-10	12	4-5	1-2	1-2	0-0-0	1	2	0	0	10
N.C. A&T	01-05-10	10	1-2	0-0	0-1	0-2-2	1	2	0	0	2
Winthrop	01-09-10	20	2-3	0-1	0-0	2-3-5	3	1	0	1	4
Longwood	01-12-10	9	1-3	0-1	0-0	2-2-4	1	1	0	1	2
Presbyterian	01-16-10	18	2-6	1-3	0-0	2-3-5	1	3	0	1	5
UNC Asheville	01-18-10	12	2-4	0-1	1-1	2-1-3	1	2	1	1	5

2009-10 Notes/Highlights

-- Has already exceeded her scoring and rebounding totals from her entire freshman season.

Career Stats

Season	GP	GS	Min	Avg	FG	FGA	Pct	3FG	3FGA	Pct	FT	FTA	Pct	ORB	DRB	TOT	Avg	Asst	TO	Blk	Stl	Pts	Avg
2008-09	26	0	254	9.8	16	45	.356	3	15	.200	8	18	.444	10	33	43	1.7	21	27	2	12	43	1.7
2009-10	16	0	226	14.1	21	54	.389	4	18	.222	11	17	.647	18	44	62	3.9	20	27	7	14	57	3.6
TOTAL	42	0	480	11.4	37	99	.374	7	33	.212	19	35	.543	28	77	105	2.5	41	54	9	26	100	2.4



15

Kylee Beecher
 6-4 Sophomore F
 Roanoke, Va.
 Hidden Valley HS

Season Highs

Points - 14 (Two times)

Most recently, vs. UNCA (01-18-10)

FG Made - 7

vs. Glenville State (12-05-09)

FG Attempts - 8 (Four times)

Most recently, vs. UNCA (01-18-10)

3FG Made - 0

None

3FG Attempts - 2

vs. Cornell (12-28-09)

FT Made - 8

vs. UNC Asheville (01-18-10)

FT Attempts - 10

vs. UNC Asheville (01-18-10)

Rebounds - 6 (Three times)

Most recently, vs. Longwood (01-12-10)

Assists - 2 (Five times)

Most recently, vs. UNCA (01-18-10)

Steals - 2 (Three times)

Most recently, vs. UNCA (01-18-10)

Blocks - 1 (Five times)

Most recently, vs. Winthrop (01-09-10)

Career Highs

Points - 18

vs. Saint Paul's (12-13-08)

FG Made - 7

vs. Glenville State (12-05-09)

FG Attempts - 10

vs. Saint Paul's (12-13-08)

3FG Made - 1 (Two times)

Most recently, vs. Coastal (01-26-09)

3FG Attempts - 2 (Three times)

Most recently, vs. Cornell (12-28-09)

FT Made - 8

vs. UNC Asheville (01-18-10)

FT Attempts - 10

vs. UNC Asheville (01-18-10)

Rebounds - 10 (Three times)

Most recently, vs. High Point (01-31-09)

Assists - 5

vs. Saint Paul's (12-13-08)

Steals - 3 (Two times)

Most recently, vs. Presby. (03-02-09)

Blocks - 1 (Seven times)

Most recently, vs. Winthrop (01-09-10)

2009-10 Game-By-Game Statistics

OPPONENT	DATE	MIN	FG-FGA	3FG-FGA	FT-FTA	OFF-DEF-TOT	A	TO	BLK	STL	PTS
Winston-Salem St.	11-13-09	23	2-3	0-0	4-4	1-1-2	2	0	1	0	8
UNC Greensboro	11-17-09	37	4-8	0-0	3-7	2-3-5	0	4	0	0	11
Tulane	11-20-09	36	3-5	0-0	0-0	3-0-3	2	4	0	1	6
Navy	11-21-09	36	2-8	0-1	0-0	0-2-2	0	2	0	1	4
Lafayette	11-28-09	25	2-2	0-0	1-2	1-2-3	2	0	1	0	5
James Madison	12-01-09	26	2-4	0-0	0-0	3-3-6	1	1	1	2	4
Glenville St.	12-05-09	21	7-8	0-0	0-0	4-2-6	0	1	0	0	14
Auburn	12-15-09	25	1-4	0-0	5-6	0-0-0	1	0	0	2	7
Cornell	12-28-09	20	2-6	0-2	1-2	3-0-3	0	4	0	0	5
Virginia	12-29-09	21	2-4	0-1	2-2	2-0-2	0	0	0	0	6
Gardner-Webb	01-02-10	16	1-3	0-1	2-3	0-3-3	0	1	0	0	4
N.C. A&T	01-05-10	18	0-1	0-0	0-0	0-3-3	0	4	1	1	0
Winthrop	01-09-10	19	2-3	0-0	1-1	0-2-2	2	1	1	1	5
Longwood	01-12-10	25	3-5	0-0	4-5	1-5-6	1	3	0	0	10
Presbyterian	01-16-10	18	1-1	0-0	3-6	0-3-3	1	2	0	1	5
UNC Asheville	01-18-10	27	3-8	0-0	8-10	2-3-5	2	2	0	2	14

2009-10 Notes/Highlights

Career Stats

Season	GP	GS	Min	Avg	FG	FGA	Pct	3FG	3FGA	Pct	FT	FTA	Pct	ORB	DRB	TOT	Avg	Asst	TO	Blk	Stl	Pts	Avg
2008-09	31	4	664	21.4	54	118	.458	2	7	.286	27	38	.711	43	97	140	4.5	19	45	2	18	137	4.4
2009-10	16	8	393	24.6	37	73	.507	0	5	.000	34	48	.708	22	32	54	3.4	14	29	5	11	108	6.8
TOTAL	47	12	1057	22.5	91	191	.476	2	12	.167	61	86	.709	65	129	194	4.1	33	74	7	29	245	5.2



21

Amber Mays
 5-6 Senior Guard
 Pasadena, Calif.
 Pasadena HS
 (State Fair CC)

Season Highs

Points - 18
 at Auburn (12-15-09)
FG Made - 9
 at Auburn (12-15-09)
FG Attempts - 15
 vs. James Madison (12-01-09)
3FG Made - 2
 vs. UNC Asheville (01-18-10)
3FG Attempts - 2
 vs. UNC Asheville (01-18-10)
FT Made - 4
 at Navy (11-21-09)
FT Attempts - 6 (Two times)
 Most recently, at G.-Webb (01-02-10)
Rebounds - 5
 at Gardner-Webb (01-02-10)
Assists - 10
 vs. Winthrop (01-09-10)
Steals - 5
 vs. Longwood (01-12-10)
Blocks - 0
 None

Career Highs

Points - 18
 at Auburn (12-15-09)
FG Made - 9
 at Auburn (12-15-09)
FG Attempts - 15
 vs. James Madison (12-01-09)
3FG Made - 2 (Two times)
 Most recently, vs. UNCA (01-18-10)
3FG Attempts - 3
 at Vanderbilt (12-22-08)
FT Made - 6
 at UNC Asheville (01-19-09)
FT Attempts - 8
 vs. UC Riverside (11-21-08)
Rebounds - 6 (Two times)
 Most recently, vs. Radford (02-02-09)
Assists - 10
 vs. Winthrop (01-09-10)
Steals - 8
 vs. East Tennessee St. (01-13-09)
Blocks - 1 (Two times)
 Most recently, vs. Radford (02-02-09)

2009-10 Game-By-Game Statistics

OPPONENT	DATE	MIN	FG-FGA	3FG-FGA	FT-FTA	OFF-DEF-TOT	A	TO	BLK	STL	PTS
Winston-Salem St.	11-13-09	24	3-7	0-0	1-2	0-0-0	6	1	0	4	7
UNC Greensboro	11-17-09	26	4-7	1-1	2-6	0-1-1	4	5	0	4	11
Tulane	11-20-09	33	4-6	0-0	2-4	0-2-2	3	4	0	4	10
Navy	11-21-09	30	2-5	0-0	4-5	2-0-2	5	3	0	1	8
Lafayette	11-28-09	31	4-6	0-0	3-4	1-3-4	4	5	0	4	11
James Madison	12-01-09	33	7-15	0-1	0-1	0-2-2	2	1	0	1	14
Glenville St.	12-05-09	18	2-3	0-0	1-2	0-2-2	4	2	0	2	5
Auburn	12-15-09	35	9-13	0-0	0-0	0-1-1	3	6	0	4	18
Cornell	12-28-09	20	2-2	0-0	0-0	0-2-2	8	2	0	4	4
Virginia	12-29-09	28	2-4	0-0	3-4	0-0-0	3	7	0	3	7
Gardner-Webb	01-02-10	33	4-9	0-0	2-6	3-2-5	6	4	0	1	10
N.C. A&T	01-05-10	25	2-4	0-0	0-0	0-2-2	3	2	0	1	4
Winthrop	01-09-10	22	1-3	0-0	1-2	0-0-0	10	2	0	2	3
Longwood	01-12-10	30	3-4	1-1	0-0	0-0-0	3	5	0	5	7
Presbyterian	01-16-10	21	4-6	0-0	0-0	0-2-2	6	1	0	2	8
UNC Asheville	01-18-10	23	5-8	2-2	2-2	1-0-1	5	0	0	3	14

2009-10 Notes/Highlights

- The only senior on Liberty's 2009-10 roster.
- Leads the Big South in assists (4.7 apg) and assist-to-turnover ratio (1.50), while ranking No. 2 in steals (2.8 spg).
- Distributed a career-high 10 assists against Winthrop (Jan. 9), the most by a Lady Flame since Daina Staugaitiene's 10 assists versus Morgan State on Nov. 22, 2002.
- Has recorded a steal in 18 consecutive games and 26 of her last 27 outings.
- In four Big South games this season, has totaled 27 assists and only seven turnovers.

Career Stats

Season	GP	GS	Min	Avg	FG	FGA	Pct	3FG	3FGA	Pct	FT	FTA	Pct	ORB	DRB	TOT	Avg	Asst	TO	Blk	Stl	Pts	Avg
2008-09	33	31	1002	30.4	92	201	.458	5	15	.333	56	86	.651	11	75	86	2.6	126	114	2	68	245	7.4
2009-10	16	16	432	27.0	58	102	.569	4	5	.800	21	38	.553	7	19	26	1.6	75	50	0	45	141	8.8
TOTAL	49	47	1434	29.3	150	303	.495	9	20	.450	77	124	.621	18	94	112	2.3	201	164	2	113	386	7.9



23

Avery Warley
 6-3 R-Sophomore F
 Washington, D.C.
 H.D. Woodson HS

Season Highs

Points - 19
 at Lafayette (11-28-09)
FG Made - 8
 at Lafayette (11-28-09)
FG Attempts - 13
 at Lafayette (11-28-09)
3FG Made - 0
 None
3FG Attempts - 0
 None
FT Made - 4
 vs. Presbyterian (01-16-10)
FT Attempts - 7
 vs. Presbyterian (01-16-10)
Rebounds - 11 (Three times)
 Most recently, vs. N.C. A&T (01-05-10)
Assists - 2 (Three times)
 Most recently, vs. UNCA (01-18-10)
Steals - 3
 at Gardner-Webb (01-02-10)
Blocks - 3
 vs. UNC Asheville (01-18-10)

Career Highs

Points - 19
 at Lafayette (11-28-09)
FG Made - 8
 at Lafayette (11-28-09)
FG Attempts - 13
 at Lafayette (11-28-09)
3FG Made - 0
 None
3FG Attempts - 0
 None
FT Made - 6
 vs. UNC Asheville (02-28-09)
FT Attempts - 8 (Two times)
 Most recently, vs. UNCA (02-28-09)
Rebounds - 18
 at Virginia Tech (12-30-08)
Assists - 3
 vs. Saint Paul's (12-13-08)
Steals - 3 (Three times)
 Most recently, at G.-Webb (01-02-10)
Blocks - 4 (Two times)
 Most recently, vs. Winthrop (02-16-09)

2009-10 Game-By-Game Statistics

OPPONENT	DATE	MIN	FG-FGA	3FG-FGA	FT-FTA	OFF-DEF-TOT	A	TO	BLK	STL	PTS
Winston-Salem St.	11-13-09	26	2-6	0-0	0-2	4-5-9	2	5	0	0	4
UNC Greensboro	11-17-09	19	0-0	0-0	0-0	2-5-7	0	1	0	1	0
Tulane	11-20-09	37	4-10	0-0	1-2	6-5-11	1	4	0	1	9
Navy	11-21-09	32	5-7	0-0	0-0	3-3-6	0	6	0	0	10
Lafayette	11-28-09	21	8-13	0-0	3-3	8-3-11	0	1	0	0	19
James Madison	12-01-09	29	3-7	0-0	3-4	3-4-7	2	2	0	1	9
Glenville St.	12-05-09	25	3-6	0-0	1-4	2-4-6	0	1	1	0	7
Auburn	12-15-09	33	4-6	0-0	2-2	3-3-6	0	2	0	0	10
Cornell	12-28-09	22	4-5	0-0	2-6	2-5-7	0	2	1	1	10
Virginia	12-29-09	32	6-12	0-0	0-0	3-5-8	0	5	0	2	12
Gardner-Webb	01-02-10	26	4-8	0-0	2-5	3-3-6	0	5	1	3	10
N.C. A&T	01-05-10	26	4-8	0-0	1-4	6-5-11	0	5	0	2	9
Winthrop	01-09-10	23	2-2	0-0	1-2	1-4-5	1	5	1	1	5
Longwood	01-12-10	21	6-7	0-0	0-1	3-2-5	1	1	0	0	12
Presbyterian	01-16-10	25	1-2	0-0	4-7	2-0-2	0	3	0	1	6
UNC Asheville	01-18-10	24	2-8	0-0	2-6	4-6-10	2	2	3	0	6

2009-10 Notes/Highlights

- Ranks No. 6 in the Big South in rebounding (7.3 rpg) and No. 2 in offensive rebounds (3.4 rpg).
- Tabbed a "Rising Star" by the Richmond Times-Dispatch.
- Named to the Marriott Cavalier Classic all-tournament team, after averaging 11.0 ppg and 7.5 rpg in two games.
- Has tallied 373 career boards, ranking 37th on Liberty's all-time list.
- Had grabbed five or more rebounds in 20 consecutive games, prior to the Jan. 16 contest versus Presbyterian College.

Career Stats

Season	GP	GS	Min	Avg	FG	FGA	Pct	3FG	3FGA	Pct	FT	FTA	Pct	ORB	DRB	TOT	Avg	Asst	TO	Blk	Stl	Pts	Avg
2008-09	33	33	832	25.2	112	179	.626	0	0	.000	42	81	.519	85	171	256	7.8	11	76	47	23	266	8.1
2009-10	16	16	421	26.3	58	107	.542	0	0	.000	22	48	.458	55	62	117	7.3	9	50	7	13	138	8.6
TOTAL	49	49	1253	25.6	170	286	.594	0	0	.000	64	129	.496	140	233	373	7.6	20	126	54	36	404	8.2



25

Dymond Morgan

5-7 Junior Guard

Lynwood, Calif.

Lynwood HS

(Midland College)

Season/Career Highs

Points - 11

vs. Winthrop (01-09-10)

FG Made - 4

vs. Winthrop (01-09-10)

FG Attempts - 7

vs. Winthrop (01-09-10)

3FG Made - 2

vs. Winthrop (01-09-10)

3FG Attempts - 3

vs. Winthrop (01-09-10)

FT Made - 2 (Five times)

Most recently, vs. Longwood (01-12-10)

FT Attempts - 3 (Two times)

Most recently, at G.-Webb (01-02-10)

Rebounds - 7

vs. Glenville State (12-05-09)

Assists - 7

vs. Glenville State (12-05-09)

Steals - 5

vs. Presbyterian (01-16-10)

Blocks - 0

None

2009-10 Game-By-Game Statistics

OPPONENT	DATE	MIN	FG-FGA	3FG-FGA	FT-FTA	OFF-DEF-TOT	A	TO	BLK	STL	PTS
Winston-Salem St.	11-13-09	16	0-2	0-0	0-0	1-3-4	1	2	0	1	0
UNC Greensboro	11-17-09	24	3-5	0-1	0-0	1-4-5	2	2	0	1	6
Tulane	11-20-09	18	3-6	1-1	2-2	0-2-2	0	4	0	2	9
Navy	11-21-09	15	1-2	0-0	0-0	1-2-3	0	2	0	0	2
Lafayette	11-28-09	4	0-1	0-0	1-2	0-0-0	0	1	0	0	1
James Madison	12-01-09	7	0-0	0-0	0-0	0-0-0	0	1	0	0	0
Glenville St.	12-05-09	22	2-2	0-0	2-3	0-7-7	7	8	0	1	6
Auburn	12-15-09	10	1-1	0-0	0-0	0-2-2	0	0	0	1	2
Cornell	12-28-09	22	0-3	0-0	2-2	1-0-1	1	5	0	3	2
Virginia	12-29-09	12	1-2	0-0	0-0	1-0-1	0	3	0	0	2
Gardner-Webb	01-02-10	13	2-4	0-0	2-3	0-1-1	1	0	0	2	6
N.C. A&T	01-05-10	17	2-3	0-0	1-2	0-0-0	1	1	0	3	5
Winthrop	01-09-10	20	4-7	2-3	1-2	0-1-1	1	1	0	2	11
Longwood	01-12-10	15	2-6	0-1	2-2	0-3-3	3	2	0	1	6
Presbyterian	01-16-10	18	2-3	0-0	1-1	0-0-0	4	2	0	5	5
UNC Asheville	01-18-10	22	3-6	0-2	0-0	0-2-2	6	2	0	4	6

2009-10 Notes/Highlights

-- Has boosted her production in Big South games, averaging 7.0 ppg, 3.0 apg and 3.3 spg versus conference foes.

Career Stats

Season	GP	GS	Min	Avg	FG	FGA	Pct	3FG	3FGA	Pct	FT	FTA	Pct	ORB	DRB	TOT	Avg	Asst	TO	Blk	Stl	Pts	Avg
2009-10	16	0	255	15.9	26	53	.491	3	8	.375	14	19	.737	5	27	32	2.0	27	36	0	26	69	4.3



30

Brittany Campbell

6-0 R-Freshman Guard

Rustburg, Va.

Brookville HS

Career Highs

Points - 11

vs. Hartford (11-28-08)

FG Made - 4

vs. Hartford (11-28-08)

FG Attempts - 12

at James Madison (12-02-08)

3FG Made - 3

at James Madison (12-02-08)

3FG Attempts - 7

at James Madison (12-02-08)

FT Made - 3

vs. South Alabama (11-29-08)

FT Attempts - 3 (Two times)

Most recently, vs. S. Alabama (11-29-08)

Rebounds - 3 (Three times)

Most recently, at JMU (12-02-08)

Assists - 1

vs. Hartford (11-28-08)

Steals - 2

vs. South Alabama (11-29-08)

Blocks - 1

vs. South Alabama (11-29-08)

2009-10 Game-By-Game Statistics

OPPONENT	DATE	MIN	FG-FGA	3FG-FGA	FT-FTA	OFF-DEF-TOT	A	TO	BLK	STL	PTS
Winston-Salem St.	11-13-09										Did not play
UNC Greensboro	11-17-09										Did not play
Tulane	11-20-09										Did not play
Navy	11-21-09										Did not play
Lafayette	11-28-09										Did not play
James Madison	12-01-09										Did not play
Glenville St.	12-05-09										Did not play
Auburn	12-15-09										Did not play
Cornell	12-28-09										Did not play
Virginia	12-29-09										Did not play
Gardner-Webb	01-02-10										Did not play
N.C. A&T	01-05-10										Did not play
Winthrop	01-09-10										Did not play
Longwood	01-12-10										Did not play
Presbyterian	01-16-10										Did not play
UNC Asheville	01-18-10										Did not play

2009-10 Notes/Highlights

-- Has missed the first 16 games of the 2009-10 season, due to a knee injury.

Career Stats

Season	GP	GS	Min	Avg	FG	FGA	Pct	3FG	3FGA	Pct	FT	FTA	Pct	ORB	DRB	TOT	Avg	Asst	TO	Blk	Stl	Pts	Avg
2008-09	5	1	104	20.8	11	31	.355	6	18	.333	7	9	.778	5	6	11	2.2	1	6	1	4	35	7.0



32

Rachel McLeod
 5-10 Junior Guard
 Houston, Texas
 Home Schooled

Season Highs

Points - 11
 vs. Presbyterian (01-16-10)
FG Made - 4
 vs. Presbyterian (01-16-10)
FG Attempts - 8
 vs. North Carolina A&T (01-05-10)
3FG Made - 2
 vs. UNC Asheville (01-18-10)
3FG Attempts - 3 (Three times)
 Most recently, vs. UNCA (01-18-10)
FT Made - 3
 vs. Tulane (11-20-09)
FT Attempts - 5
 vs. Tulane (11-20-09)
Rebounds - 8
 at Gardner-Webb (01-02-10)
Assists - 7
 vs. Glenville State (12-05-09)
Steals - 4
 vs. UNC Asheville (01-18-10)
Blocks - 1
 vs. Longwood (01-12-10)

Career Highs

Points - 13
 at Coastal Carolina (02-21-09)
FG Made - 4 (Five times)
 Most recently, vs. Presby. (01-16-10)
FG Attempts - 13
 at Old Dominion (03-23-08)
3FG Made - 2 (Four times)
 Most recently, vs. UNCA (01-18-10)
3FG Attempts - 5
 at Old Dominion (03-23-08)
FT Made - 5
 vs. Binghamton (12-08-07)
FT Attempts - 6
 vs. Binghamton (12-08-07)
Rebounds - 8 (Two times)
 Most recently, at G.-Webb (01-02-10)
Assists - 8
 vs. High Point (03-15-08)
Steals - 4 (Two times)
 Most recently, vs. UNCA (01-18-10)
Blocks - 1 (Eight times)
 Most recently, vs. Longwood (01-12-10)

2009-10 Game-By-Game Statistics

OPPONENT	DATE	MIN	FG-FGA	3FG-FGA	FT-FTA	OFF-DEF-TOT	A	TO	BLK	STL	PTS
Winston-Salem St.	11-13-09	25	3-5	0-1	2-2	1-0-1	2	0	0	2	8
UNC Greensboro	11-17-09	25	1-7	0-3	0-0	0-1-1	2	3	0	2	2
Tulane	11-20-09	23	3-4	0-0	3-5	0-2-2	2	2	0	0	9
Navy	11-21-09	18	3-4	0-0	0-2	1-1-2	0	1	0	0	6
Lafayette	11-28-09	18	1-4	0-0	2-2	0-1-1	0	1	0	1	4
James Madison	12-01-09	23	3-6	0-3	2-2	0-1-1	0	4	0	1	8
Glenville St.	12-05-09	18	2-6	0-0	2-4	1-1-2	7	2	0	2	6
Auburn	12-15-09	22	0-6	0-0	2-2	0-1-1	1	1	0	0	2
Cornell	12-28-09	17	1-2	1-1	0-0	0-0-0	0	2	0	0	3
Virginia	12-29-09	19	2-2	0-0	1-1	0-2-2	0	3	0	0	5
Gardner-Webb	01-02-10	32	2-4	0-0	2-2	2-6-8	2	4	0	0	6
N.C. A&T	01-05-10	25	1-8	0-0	2-2	2-0-2	1	0	0	1	4
Winthrop	01-09-10	20	2-3	0-0	0-0	1-2-3	2	0	0	1	4
Longwood	01-12-10	27	2-6	0-0	1-2	0-2-2	4	2	1	0	5
Presbyterian	01-16-10	20	4-6	1-1	2-2	1-2-3	1	0	0	2	11
UNC Asheville	01-18-10	23	3-7	2-3	2-2	1-4-5	3	0	0	4	10

2009-10 Notes/Highlights

-- Has scored in double figures in back-to-back games for the first time in her career.

Career Stats

Season	GP	GS	Min	Avg	FG	FGA	Pct	3FG	3FGA	Pct	FT	FTA	Pct	ORB	DRB	TOT	Avg	Asst	TO	Blk	Stl	Pts	Avg
2007-08	32	0	531	16.6	50	108	.463	12	33	.364	27	41	.659	10	46	56	1.8	66	60	4	25	139	4.3
2008-09	30	5	622	20.7	39	120	.325	9	34	.265	34	45	.756	11	60	71	2.4	73	82	3	29	121	4.0
2009-10	16	16	355	22.2	33	80	.413	4	12	.333	23	30	.767	10	26	36	2.3	27	25	1	16	93	5.8
TOTAL	78	21	1508	19.3	122	308	.396	25	79	.316	84	116	.724	31	132	163	2.1	166	167	8	70	353	4.5



40

Devon Brown

5-10 R-Freshman G
Waynesboro, Va.
Waynesboro HS

Season/Career Highs

Points - 26 (Two times)

Most recently, vs. UNCG (11-17-09)

FG Made - 11 (Two times)

Most recently, vs. UNCG (11-17-09)

FG Attempts - 17

vs. Longwood (01-12-10)

3FG Made - 3 (Four times)

Most recently, vs. Presby. (01-16-10)

3FG Attempts - 6 (Two times)

Most recently, vs. Winthrop (01-09-10)

FT Made - 8

at Navy (11-21-09)

FT Attempts - 9

at Navy (11-21-09)

Rebounds - 13 (Three times)

Most recently, vs. Longwood (01-12-10)

Assists - 4

at Lafayette (11-28-09)

Steals - 5

at Navy (11-21-09)

Blocks - 2 (Three times)

Most recently, vs. Longwood (01-12-10)

2009-10 Game-By-Game Statistics

OPPONENT	DATE	MIN	FG-FGA	3FG-FGA	FT-FTA	OFF-DEF-TOT	A	TO	BLK	STL	PTS
Winston-Salem St.	11-13-09	22	11-14	3-5	1-1	4-3-7	1	2	0	0	26
UNC Greensboro	11-17-09	30	11-15	1-2	3-7	4-5-9	2	3	0	3	26
Tulane	11-20-09	32	6-13	3-4	3-6	3-9-12	1	2	2	1	18
Navy	11-21-09	33	4-13	3-5	8-9	3-8-11	2	1	0	5	19
Lafayette	11-28-09	20	8-14	1-3	0-0	2-1-3	4	2	0	1	17
James Madison	12-01-09	34	1-16	0-3	7-8	4-9-13	0	6	0	1	9
Glenville St.	12-05-09	18	8-11	0-1	4-6	2-7-9	2	1	0	0	20
Auburn	12-15-09	37	7-9	2-3	3-3	0-8-8	0	3	1	0	19
Cornell	12-28-09	23	8-14	1-3	1-3	1-5-6	1	2	1	2	18
Virginia	12-29-09	25	4-13	1-6	0-0	1-5-6	0	4	2	3	9
Gardner-Webb	01-02-10	31	2-11	1-4	4-4	3-8-11	0	2	0	3	9
N.C. A&T	01-05-10	32	6-15	1-5	4-7	4-9-13	3	3	1	2	17
Winthrop	01-09-10	23	8-16	2-6	3-3	1-5-6	1	1	0	2	21
Longwood	01-12-10	30	5-17	0-4	6-6	6-7-13	3	4	2	3	16
Presbyterian	01-16-10	21	5-8	3-5	0-0	1-4-5	3	1	1	2	13
UNC Asheville	01-18-10	25	5-10	2-4	0-0	2-6-8	2	4	1	0	12

2009-10 Notes/Highlights

-- Named Big South Player of the Week on Nov. 24, becoming the first Liberty freshman to capture the award since Megan Frazee (twice in 2005-06).

-- Ranks in the top 10 of 10 different Big South statistical categories, including defensive rebounds (1st-6.2 rpg), scoring (2nd-16.8 ppg), rebounding (2nd-8.8 rpg), field goal percentage (2nd-.474), free throw percentage (4th-.746), three-point field goal percentage (4th-.381), offensive rebounds (7th-2.6 rpg), three-pointers made (T-7th-1.5/game), blocked shots (9th-0.7 bpg) and steals (10th-1.8 spg).

-- Tabbed a "Freshman to Watch" by the Richmond Times-Dispatch prior to the season.

-- Her 26 points versus Winston-Salem State (Nov. 13) equaled the Lady Rams' point total and were the most points by a Lady Flame in her collegiate debut since Elena Kisseleva scored 30 points versus Bluefield on Nov. 23, 1996.

-- Outscored Navy during the second half of the Navy Classic championship game (Nov. 21), 14-11. She was named the Championship Game All-Star, after tallying 19 points, 11 rebounds and a career-high five steals.

-- Scored all 21 of her points during a 17-minute span of a Jan. 9 win over Winthrop, outscoring the Eagles, 21-8, over that stretch.

-- Has posted four double-doubles this season (Nov. 20 vs. Tulane, Nov. 21 at Navy, Jan. 5 vs. North Carolina A&T and Jan. 12 vs. Longwood).

-- Has made nine consecutive free throws during the last four contests.

Career Stats

Season	GP	GS	Min	Avg	FG	FGA	Pct	3FG	3FGA	Pct	FT	FTA	Pct	ORB	DRB	TOT	Avg	Asst	TO	Blk	Stl	Pts	Avg
2009-10	16	16	436	27.3	99	209	.474	24	63	.381	47	63	.746	41	99	140	8.8	25	41	11	28	269	16.8



43

Kittery Maine

6-4 Junior Forward

Bonaire, Ga.

Warner Robins HS

Career Highs

Points - 12

vs. Saint Paul's (12-13-08)

FG Made - 5

vs. Saint Paul's (12-13-08)

FG Attempts - 8

vs. Saint Paul's (12-13-08)

3FG Made - 0

None

3FG Attempts - 0

None

FT Made - 3

vs. Charleston So. (02-18-08)

FT Attempts - 4

vs. Charleston So. (02-18-08)

Rebounds - 7

vs. Saint Paul's (12-13-08)

Assists - 1 (Six times)

Most recently, vs. Radford (02-02-09)

Steals - 1 (Five times)

Most recently, vs. Winthrop (02-16-09)

Blocks - 3 (Two times)

Most recently, at W. Carolina (11-22-08)

2009-10 Game-By-Game Statistics

OPPONENT	DATE	MIN	FG-FGA	3FG-FGA	FT-FTA	OFF-DEF-TOT	A	TO	BLK	STL	PTS
Winston-Salem St.	11-13-09										Did not play
UNC Greensboro	11-17-09										Did not play
Tulane	11-20-09										Did not play
Navy	11-21-09										Did not play
Lafayette	11-28-09										Did not play
James Madison	12-01-09										Did not play
Glenville St.	12-05-09										Did not play
Auburn	12-15-09										Did not play
Cornell	12-28-09										Did not play
Virginia	12-29-09										Did not play
Gardner-Webb	01-02-10										Did not play
N.C. A&T	01-05-10										Did not play
Winthrop	01-09-10										Did not play
Longwood	01-12-10										Did not play
Presbyterian	01-16-10										Did not play
UNC Asheville	01-18-10										Did not play

2009-10 Notes/Highlights

-- Has missed the first 16 games of the 2009-10 season, due to a knee injury.

Career Stats

Season	GP	GS	Min	Avg	FG	FGA	Pct	3FG	3FGA	Pct	FT	FTA	Pct	ORB	DRB	TOT	Avg	Asst	TO	Blk	Stl	Pts	Avg
2007-08	28	0	202	7.2	22	30	.733	0	0	.000	10	18	.556	13	28	41	1.5	3	18	6	3	54	1.9
2008-09	24	0	197	8.2	20	41	.488	0	0	.000	2	4	.500	17	30	47	2.0	3	12	7	2	42	1.8
TOTAL	52	0	399	7.7	42	71	.592	0	0	.000	12	22	.545	30	58	88	1.7	6	30	13	5	96	1.8



54

Carra Coy

6-6 Freshman Forward
Summerville, S.C.
Northwood Academy

Season/Career Highs

Points - 3 (Two times)

Most recently, vs. Cornell (12-28-09)

FG Made - 1 (Six times)

Most recently, vs. UNCA (01-18-10)

FG Attempts - 4

vs. Winthrop (01-09-10)

3FG Made - 0

None

3FG Attempts - 0

None

FT Made - 2

vs. Greenville State (12-05-09)

FT Attempts - 2 (Three times)

Most recently, vs. Cornell (12-28-09)

Rebounds - 4 (Two times)

Most recently, vs. Glen. St. (12-05-09)

Assists - 0

None

Steals - 1

at Lafayette (11-28-09)

Blocks - 2

vs. UNC Greensboro (11-17-09)

2009-10 Game-By-Game Statistics

OPPONENT	DATE	MIN	FG-FGA	3FG-FGA	FT-FTA	OFF-DEF-TOT	A	TO	BLK	STL	PTS
Winston-Salem St.	11-13-09	19	1-3	0-0	1-2	0-1-1	0	2	1	0	3
UNC Greensboro	11-17-09	14	1-2	0-0	0-0	1-3-4	0	0	2	0	2
Tulane	11-20-09				Did not play						
Navy	11-21-09				Did not play						
Lafayette	11-28-09	17	1-1	0-0	0-0	0-1-1	0	1	0	1	2
James Madison	12-01-09	7	0-0	0-0	0-0	1-0-1	0	1	0	0	0
Greenville St.	12-05-09	15	0-1	0-0	2-2	1-3-4	0	3	1	0	2
Auburn	12-15-09				Did not play						
Cornell	12-28-09	15	1-2	0-0	1-2	0-2-2	0	1	1	0	3
Virginia	12-29-09				Did not play						
Gardner-Webb	01-02-10	5	0-0	0-0	0-0	0-1-1	0	1	0	0	0
N.C. A&T	01-05-10	4	1-1	0-0	0-0	0-0-0	0	0	0	0	2
Winthrop	01-09-10	9	0-4	0-0	0-0	2-1-3	0	0	1	0	0
Longwood	01-12-10	5	0-0	0-0	0-1	1-0-1	0	0	0	0	0
Presbyterian	01-16-10	15	0-1	0-0	0-1	1-1-2	0	1	1	0	0
UNC Asheville	01-18-10	10	1-1	0-0	0-0	1-0-1	0	1	1	0	2

2009-10 Notes/Highlights

-- Ranks 10th in the Big South with 0.7 blocked shots per game.

Career Stats

Season	GP	GS	Min	Avg	FG	FGA	Pct	3FG	3FGA	Pct	FT	FTA	Pct	ORB	DRB	TOT	Avg	Asst	TO	Blk	Stl	Pts	Avg
2009-10	12	0	135	11.3	6	16	.375	0	0	.000	4	8	.500	8	13	21	1.8	0	11	8	1	16	1.3

[Contact Us](#)

Liberty (11-4)
Women's Basketball National Ranking Summary
Thru Games 01/17/2010

[Back to team selections](#)[Big South - All Teams](#)

Category	Rank	Actual	National Leader	Actual
Scoring Offense (332 ranked)	120	66.9	Oregon	87.4
Scoring Defense (332 ranked)	2	49.1	Connecticut	44.7
Scoring Margin (332 ranked)	20	17.7	Connecticut	39.7
Field-Goal Percentage (332 ranked)	3	48.6	Connecticut	52.5
Field-Goal Percentage Defense (332 ranked)	6	33.7	Connecticut	30.0
Free-Throw Percentage (332 ranked)	259	64.2	Drexel	81.2
Rebound Margin (332 ranked)	1	14.7	Liberty	14.7
Three-Point Field Goals Per Game (332 ranked)	319	2.7	Morehead St.	10.3
Three-Point Field-Goal Percentage (265 ranked)			Kansas St.	42.0
Won-Lost Percentage (332 ranked)	52	73.3	Connecticut Green Bay Nebraska	100.0 100.0 100.0
Assists Per Game (332 ranked)	113	13.7	Connecticut	20.8
Blocked Shots Per Game (332 ranked)	247	2.5	Baylor	8.1
Steals Per Game (332 ranked)	21	11.6	Georgetown	15.1
Turnovers Per Game (332 ranked)	299	21.7	New Mexico	12.3
Personal Fouls Per Game (332 ranked)	190	17.9	Dartmouth	12.1
Assist Turnover Ratio (332 ranked)	216	0.63	Connecticut	1.39
Turnover Margin (332 ranked)	202	-0.53	Georgetown	10.53
Three Pt FG Defense (332 ranked)	1	24.0	Liberty	24.0

Category	Player	Rank	Actual	National Leader	Actual
Points Per Game (250 ranked)	Devon Brown	63	17.1	Dawn Evans, JMU	26.7
Rebounds Per Game (250 ranked)	Devon Brown Avery Warley	72 202	8.8 7.1	Judie Lomax, Clmbia	14.7
Assists Per Game (250 ranked)	Amber Mays	62	4.7	Courtney Vandersloot, Gonzga	9.0
Blocked Shots Per Game (250 ranked)				Louella Tomlinson, StMary	6.9
Steals Per Game (250 ranked)	Amber Mays Devon Brown	38 250	2.8 1.9	Kevi Luper, ORobt	4.6
Field-Goal Percentage (250 ranked)	Devon Brown	87	47.2	Carolyn Swords, BC	66.9
Free-Throw Percentage (250 ranked)	Devon Brown	220	74.6	Kelsey Luna, Ind.St	95.5
Three-Point Field-Goal Percentage (250 ranked)				Emily London, Samfrd	52.9
Three-Point Field Goals Per Game (250 ranked)				Dawn Evans, JMU	4.1
Assist Turnover Ratio (250 ranked)	Amber Mays	122	1.4	Alison Lacey, IowaSt	3.59
Double Doubles (30 ranked)				Judie Lomax, Clmbia	13.0
Triple Doubles (30 ranked)				Louella Tomlinson, StMary	3.0

Official Basketball Box Score -- Game Totals -- Final Statistics

UNC Asheville vs Liberty

01-18-10 7:05 p.m. at Lynchburg, Va. (Vines Center)

VISITORS: UNC Asheville 5-13, 1-5 BSC

##	Player Name	TOT-FG			3-PT			REBOUNDS			PF	TP	A	TO	BLK	S	MIN
		FG-FGA	FG-FGA	FT-FTA	OF	DE	TOT										
21	MONTGOMERY, Lindsey. f	2-7	0-0	6-8	1	7	8	3	10	1	4	1	0	31			
35	RAINEY, Kiana..... f	1-5	0-0	0-0	2	1	3	2	2	1	1	0	0	21			
04	SHEPARD, Kendall.... g	4-9	1-2	0-0	1	1	2	2	9	4	7	0	5	37			
05	OKOLI, Chioma..... g	1-7	0-0	0-0	1	1	2	0	2	0	0	0	0	17			
12	THOMPSON, Lindsey... g	2-3	2-3	0-0	1	0	1	1	6	1	4	0	0	19			
13	RILES, Kelli.....	1-5	0-0	1-4	1	0	1	5	3	0	1	0	0	20			
14	BARKSDALE, Breaira..	0-0	0-0	0-0	0	0	0	0	0	0	2	0	0	3			
20	WAGNER, Dana.....	1-4	1-2	0-0	0	0	0	0	3	0	1	0	1	8			
22	AUGHBURNS, Linda....	0-4	0-0	0-0	2	1	3	1	0	0	1	0	2	25			
24	BLAYLOCK, Grace.....	1-5	1-4	0-0	0	1	1	1	3	1	2	0	0	10			
32	WISE, Katie.....	1-1	0-0	0-0	0	0	0	4	2	0	1	0	0	2			
44	WHEATON, Mackenzie..	0-1	0-1	0-0	0	1	1	0	0	1	0	0	1	7			
	TEAM.....				4	1	5				1						
	Totals.....	14-51	5-12	7-12	13	14	27	19	40	9	25	1	9	200			

TOTAL FG% 1st Half: 7-28 25.0% 2nd Half: 7-23 30.4% Game: 27.5% DEADB
 3-Pt. FG% 1st Half: 2-5 40.0% 2nd Half: 3-7 42.9% Game: 41.7% REBS
 F Throw % 1st Half: 1-4 25.0% 2nd Half: 6-8 75.0% Game: 58.3% 4

HOME TEAM: Liberty 12-4, 3-1 BSC

##	Player Name	TOT-FG			3-PT			REBOUNDS			PF	TP	A	TO	BLK	S	MIN
		FG-FGA	FG-FGA	FT-FTA	OF	DE	TOT										
11	ANTIC, Jelena..... f	3-5	1-1	0-0	4	0	4	2	7	0	3	0	0	18			
23	WARLEY, Avery..... f	2-8	0-0	2-6	4	6	10	0	6	2	2	3	0	24			
21	MAYS, Amber..... g	5-8	2-2	2-2	1	0	1	0	14	5	0	0	3	23			
32	McLEOD, Rachel..... g	3-7	2-3	2-2	1	4	5	1	10	3	0	0	4	23			
40	BROWN, Devon..... g	5-10	2-4	0-0	2	6	8	2	12	2	4	1	0	25			
01	WASHINGTON, LaKendra	2-6	2-4	0-3	1	0	1	2	6	0	2	0	4	16			
12	DALE, Danika.....	2-4	0-1	1-1	2	1	3	0	5	1	2	1	1	12			
15	BEECHER, Kylee.....	3-8	0-0	8-10	2	3	5	2	14	2	2	0	2	27			
25	MORGAN, Dymond.....	3-6	0-2	0-0	0	2	2	2	6	6	2	0	4	22			
54	COY, Carra.....	1-1	0-0	0-0	1	0	1	0	2	0	1	1	0	10			
	TEAM.....				6	3	9										
	Totals.....	29-63	9-17	15-24	24	25	49	11	82	21	18	6	18	200			

TOTAL FG% 1st Half: 15-34 44.1% 2nd Half: 14-29 48.3% Game: 46.0% DEADB
 3-Pt. FG% 1st Half: 4-7 57.1% 2nd Half: 5-10 50.0% Game: 52.9% REBS
 F Throw % 1st Half: 7-11 63.6% 2nd Half: 8-13 61.5% Game: 62.5% 5

Officials: Karen Gruca (R), Tom Baldinelli, Clark Bennett

Technical fouls: UNC Asheville-None. Liberty-None.

Attendance: 826

Score by Periods	1st	2nd	Total
UNC Asheville.....	17	23	- 40
Liberty.....	41	41	- 82

Fouled Out: #13 (1:23, 2nd)

Points in the paint-UNCA 12,LIBERTY 38. Points off turnovers-UNCA 12,LIBERTY 33.

2nd chance points-UNCA 11,LIBERTY 23. Fast break points-UNCA 6,LIBERTY 6.

Bench points-UNCA 11,LIBERTY 33. Score tied-2 times. Lead changed-0 times.

Last FG-UNCA 2nd-01:11, LIBERTY 2nd-00:47.

Largest lead-UNCA None, LIBERTY by 46 2nd-05:14.

Official Basketball Box Score -- Game Totals -- Final Statistics
 Charleston Southern vs Liberty
 03-13-09 12:00 p.m. at High Point, N.C. (Millis Athletic Ctr.)

VISITORS: Charleston Southern 12-18

##	Player Name	TOT-FG			3-PT			REBOUNDS			PF	TP	A	TO	BLK	S	MIN
		FG	FGA	FG%	FG	FGA	FG%	OF	DE	TOT							
33	SCHWAGMEYER, Ali....	f	2-6	0-1	0-0	1	3	4	3	4	1	2	0	0	0	25	
30	JOHNSON, Lydia.....	c	0-1	0-0	0-0	0	1	1	0	0	0	0	0	0	0	11	
22	WASMER, Kelsey.....	g	4-8	1-5	0-0	0	3	3	1	9	1	4	0	1	21		
25	TULL, Katie.....	g	6-15	5-12	0-0	1	2	3	1	17	0	1	0	3	39		
32	TOLBERT, Pam.....	g	8-17	1-10	2-2	1	1	2	0	19	4	0	0	0	29		
03	RUTLEDGE, Kiki.....		1-4	0-0	0-0	3	1	4	1	2	3	3	0	0	15		
15	ROBINSON, Crystal...		0-0	0-0	0-0	0	0	0	0	0	0	2	0	0	3		
42	GIBSON, Danielle....		1-1	1-1	0-0	0	0	0	0	3	0	0	0	1	13		
44	RUSH, Lechell.....		2-5	0-0	0-0	3	1	4	4	4	0	0	0	1	28		
45	DECARVALHO, Tina....		2-4	2-4	0-0	0	0	0	1	6	1	1	0	0	16		
	TEAM.....											1					
	Totals.....		26-61	10-33	2-2	9	12	21	11	64	10	14	0	6	200		

TOTAL FG% 1st Half: 9-32 28.1% 2nd Half: 17-29 58.6% Game: 42.6% DEADB
 3-Pt. FG% 1st Half: 2-16 12.5% 2nd Half: 8-17 47.1% Game: 30.3% REBS
 F Throw % 1st Half: 0-0 0.0% 2nd Half: 2-2 100 % Game: 100 % 0

HOME TEAM: Liberty 22-8

##	Player Name	TOT-FG			3-PT			REBOUNDS			PF	TP	A	TO	BLK	S	MIN
		FG	FGA	FG%	FG	FGA	FG%	OF	DE	TOT							
23	WARLEY, Avery.....	f	4-7	0-0	0-2	1	8	9	1	8	0	0	0	0	0	28	
40	FRAZEE, Megan.....	f	12-17	0-0	2-2	6	5	11	2	26	3	5	1	1	32		
42	FRAZEE, Moriah.....	f	6-11	0-0	3-6	4	5	9	2	15	2	2	2	1	29		
21	MAYS, Amber.....	g	2-8	0-0	0-0	0	4	4	0	4	2	3	0	2	29		
22	HAMMOND, Rachel.....	g	4-5	1-2	0-0	0	1	1	0	9	5	1	0	2	23		
12	DALE, Danika.....		1-2	0-0	0-0	0	0	0	1	2	0	1	0	1	12		
25	LIGHTFOOT, Rebecca..		2-2	0-0	2-2	1	1	2	1	6	0	1	0	2	16		
32	McLEOD, Rachel.....		2-2	0-0	0-0	0	0	0	2	4	2	3	0	2	15		
43	MAINE, Kittery.....		0-1	0-0	0-0	0	1	1	1	0	0	0	1	0	16		
	TEAM.....					1	1					1					
	Totals.....		33-55	1-2	7-12	12	26	38	10	74	14	17	4	11	200		

TOTAL FG% 1st Half: 17-30 56.7% 2nd Half: 16-25 64.0% Game: 60.0% DEADB
 3-Pt. FG% 1st Half: 0-1 0.0% 2nd Half: 1-1 100 % Game: 50.0% REBS
 F Throw % 1st Half: 6-8 75.0% 2nd Half: 1-4 25.0% Game: 58.3% 3

Officials: Dan Outlaw, Bonnie Pettus, Lori Jones
 Technical fouls: Charleston Southern-None. Liberty-None.

Attendance:

Score by Periods	1st	2nd	Total
Charleston Southern.....	20	44	- 64
Liberty.....	40	34	- 74

Advance Auto Parts Big South Women's Basketball Championship

Quarterfinal #1: No. 1 seed Liberty v. No. 8 seed Charleston Southern

Points in the paint-CSU 24,LIBERTY 62. Points off turnovers-CSU 18,LIBERTY 21.

2nd chance points-CSU 9,LIBERTY 12. Fast break points-CSU 12,LIBERTY 8.

Bench points-CSU 15,LIBERTY 12. Score tied-0 times. Lead changed-0 times.

Last FG-CSU 2nd-00:02, LIBERTY 2nd-00:13.

Largest lead-CSU None, LIBERTY by 24 2nd-18:38.

2009-10 Liberty Women's Basketball
 Liberty Game-by-Game Highs (as of Jan 20, 2010)
 All games

Opponent	Date	Score	WL	POINTS	REBOUNDS	ASSISTS	STEALS	BLOCKED SHOTS
WINSTON-SALEM STATE	11-13-09	71-26	W	26-BROWN, Devon	9-WARLEY, Avery	6-MAYS, Amber	5-WASHINGTON, L	2-DALE, Danika
UNC GREENSBORO	11-17-09	60-42	W	26-BROWN, Devon	9-BROWN, Devon	4-MAYS, Amber	4-MAYS, Amber	2-COY, Carra DALE, Danika
vs Tulane	11-20-09	63-52	W	18-BROWN, Devon	12-BROWN, Devon	3-MAYS, Amber	4-MAYS, Amber	2-BROWN, Devon
at Navy	11-21-09	55-43	W	19-BROWN, Devon	11-BROWN, Devon	5-MAYS, Amber	5-BROWN, Devon	None
at Lafayette	11-28-09	90-55	W	21-WASHINGTON, L	11-WARLEY, Avery	4-BROWN, Devon MAYS, Amber	4-WASHINGTON, L MAYS, Amber	1-BEECHER, Kyle
JAMES MADISON	12-01-09	50-60	L	14-MAYS, Amber	13-BROWN, Devon	2-MAYS, Amber WARLEY, Avery	2-BEECHER, Kyle	2-DALE, Danika
GLENVILLE STATE	12-05-09	86-45	W	20-BROWN, Devon	10-ANTIC, Jelena	7-McLEOD, Rache MORGAN, Dymon	3-DALE, Danika	1-WARLEY, Avery COY, Carra
at Auburn	12-15-09	64-70	L	19-BROWN, Devon	8-BROWN, Devon	3-MAYS, Amber	4-MAYS, Amber	1-BROWN, Devon
vs Cornell	12-28-09	70-40	W	18-BROWN, Devon	8-ANTIC, Jelena	8-MAYS, Amber	4-MAYS, Amber	1-COY, Carra WARLEY, Avery BROWN, Devon WASHINGTON, L
at Virginia	12-29-09	54-63	L	12-WARLEY, Avery	8-WARLEY, Avery	3-ANTIC, Jelena MAYS, Amber	3-BROWN, Devon MAYS, Amber	2-BROWN, Devon
at Gardner-Webb Universit	01-02-10	65-70	L	10-DALE, Danika ANTIC, Jelena MAYS, Amber WARLEY, Avery	11-BROWN, Devon	6-MAYS, Amber	3-BROWN, Devon WARLEY, Avery	1-WARLEY, Avery
NORTH CAROLINA A&T	01-05-10	57-51	W	17-BROWN, Devon	13-BROWN, Devon	4-ANTIC, Jelena	3-MORGAN, Dymon	1-BEECHER, Kyle BROWN, Devon ANTIC, Jelena
WINTHROP	01-09-10	67-38	W	21-BROWN, Devon	6-BROWN, Devon ANTIC, Jelena	10-MAYS, Amber	3-WASHINGTON, L	1-WARLEY, Avery BEECHER, Kyle COY, Carra
LONGWOOD	01-12-10	78-55	W	19-ANTIC, Jelena	13-BROWN, Devon	4-McLEOD, Rache	5-MAYS, Amber	2-BROWN, Devon
PRESBYTERIAN COLLEGE	01-16-10	73-27	W	14-ANTIC, Jelena	5-BROWN, Devon DALE, Danika	6-MAYS, Amber	5-MORGAN, Dymon	1-BROWN, Devon COY, Carra
UNC ASHEVILLE	01-18-10	82-40	W	14-BEECHER, Kyle MAYS, Amber	10-WARLEY, Avery	6-MORGAN, Dymon	4-WASHINGTON, L McLEOD, Rache MORGAN, Dymon	3-WARLEY, Avery

2009-10 Liberty Women's Basketball
 Liberty Game-by-Game Points-Rebounds-Assists (as of Jan 20, 2010)
 All games

Opponent	Date	Score	WL	01	11	12	15	21	23	25	32	40
				WASHINGTON	ANTIC,JEL	DALE,DANI	BEECHER,K	MAYS,AMBE	WARLEY,AV	MORGAN,DY	MCLEOD,RA	BROWN,DEV
WINSTON-SALEM STATE	11-13-09	71-26	W	9- 2- 1	DNP	6- 7- 3	8- 2- 2	7- 0- 6	4- 9- 2	0- 4- 1	8- 1- 2	26- 7- 1
UNC GREENSBORO	11-17-09	60-42	W	2- 0- 0	DNP	0- 4- 0	11- 5- 0	11- 1- 4	0- 7- 0	6- 5- 2	2- 1- 2	26- 9- 2
vs Tulane	11-20-09	63-52	W	2- 1- 0	DNP	0- 1- 1	6- 3- 2	10- 2- 3	9-11- 1	9- 2- 0	9- 2- 2	18-12- 1
at Navy	11-21-09	55-43	W	6- 4- 0	0- 5- 3	0- 2- 1	4- 2- 0	8- 2- 5	10- 6- 0	2- 3- 0	6- 2- 0	19-11- 2
at Lafayette	11-28-09	90-55	W	21- 0- 2	4- 4- 2	6- 4- 1	5- 3- 2	11- 4- 4	19-11- 0	1- 0- 0	4- 1- 0	17- 3- 4
JAMES MADISON	12-01-09	50-60	L	2- 1- 0	1- 4- 0	3- 5- 1	4- 6- 1	14- 2- 2	9- 7- 2	0- 0- 0	8- 1- 0	9-13- 0
GLENVILLE STATE	12-05-09	86-45	W	8- 5- 2	12-10- 0	6- 9- 3	14- 6- 0	5- 2- 4	7- 6- 0	6- 7- 7	6- 2- 7	20- 9- 2
at Auburn	12-15-09	64-70	L	2- 1- 0	4- 3- 1	0- 0- 0	7- 0- 1	18- 1- 3	10- 6- 0	2- 2- 0	2- 1- 1	19- 8- 0
vs Cornell	12-28-09	70-40	W	9- 5- 2	11- 8- 2	5- 7- 2	5- 3- 0	4- 2- 8	10- 7- 0	2- 1- 1	3- 0- 0	18- 6- 1
at Virginia	12-29-09	54-63	L	5- 5- 1	5- 3- 3	3- 4- 0	6- 2- 0	7- 0- 3	12- 8- 0	2- 1- 0	5- 2- 0	9- 6- 0
at Gardner-Webb Univers	01-02-10	65-70	L	0- 0- 0	10- 5- 1	10- 0- 1	4- 3- 0	10- 5- 6	10- 6- 0	6- 1- 1	6- 8- 2	9-11- 0
NORTH CAROLINA A&T	01-05-10	57-51	W	0- 2- 0	14- 4- 4	2- 2- 1	0- 3- 0	4- 2- 3	9-11- 0	5- 0- 1	4- 2- 1	17-13- 3
WINTHROP	01-09-10	67-38	W	5- 1- 1	9- 6- 1	4- 5- 3	5- 2- 2	3- 0-10	5- 5- 1	11- 1- 1	4- 3- 2	21- 6- 1
LONGWOOD	01-12-10	78-55	W	1- 2- 1	19-10- 2	2- 4- 1	10- 6- 1	7- 0- 3	12- 5- 1	6- 3- 3	5- 2- 4	16-13- 3
PRESBYTERIAN COLLEGE	01-16-10	73-27	W	6- 3- 0	14- 3- 1	5- 5- 1	5- 3- 1	8- 2- 6	6- 2- 0	5- 0- 4	11- 3- 1	13- 5- 3
UNC ASHEVILLE	01-18-10	82-40	W	6- 1- 0	7- 4- 0	5- 3- 1	14- 5- 2	14- 1- 5	6-10- 2	6- 2- 6	10- 5- 3	12- 8- 2

54

Opponent	Date	Score	WL	COY,CARRA
WINSTON-SALEM STATE	11-13-09	71-26	W	3- 1- 0
UNC GREENSBORO	11-17-09	60-42	W	2- 4- 0
vs Tulane	11-20-09	63-52	W	DNP
at Navy	11-21-09	55-43	W	DNP
at Lafayette	11-28-09	90-55	W	2- 1- 0
JAMES MADISON	12-01-09	50-60	L	0- 1- 0
GLENVILLE STATE	12-05-09	86-45	W	2- 4- 0
at Auburn	12-15-09	64-70	L	DNP
vs Cornell	12-28-09	70-40	W	3- 2- 0
at Virginia	12-29-09	54-63	L	DNP
at Gardner-Webb Univers	01-02-10	65-70	L	0- 1- 0
NORTH CAROLINA A&T	01-05-10	57-51	W	2- 0- 0
WINTHROP	01-09-10	67-38	W	0- 3- 0
LONGWOOD	01-12-10	78-55	W	0- 1- 0
PRESBYTERIAN COLLEGE	01-16-10	73-27	W	0- 2- 0
UNC ASHEVILLE	01-18-10	82-40	W	2- 1- 0

2009-10 Liberty Women's Basketball
 Liberty Player High/Low Analysis (as of Jan 20, 2010)
 All games

Liberty - INDIVIDUAL GAME HIGHS

Points.....	26	BROWN, Devon vs UNC Greensboro (11-17-09)
	26	BROWN, Devon vs Winston-Salem State (11-13-09)
	21	BROWN, Devon vs Winthrop (01-09-10)
	21	WASHINGTON, LaKendra at Lafayette (11-28-09)
	20	BROWN, Devon vs Glenville State (12-05-09)
Field Goals Made.....	11	BROWN, Devon vs UNC Greensboro (11-17-09)
	11	BROWN, Devon vs Winston-Salem State (11-13-09)
Field Goal Att.....	17	BROWN, Devon vs Longwood (01-12-10)
	16	BROWN, Devon vs Winthrop (01-09-10)
	16	BROWN, Devon vs James Madison (12-01-09)
FG Pct (min 5 made).....	1.000 (7-7)	ANTIC, Jelena vs Presbyterian College (01-16-10)
	.875 (7-8)	BEECHER, Kylee vs Glenville State (12-05-09)
3-Point FG Made.....	3	BROWN, Devon vs Presbyterian College (01-16-10)
	3	BROWN, Devon at Navy (11-21-09)
	3	BROWN, Devon vs Tulane (11-20-09)
	3	BROWN, Devon vs Winston-Salem State (11-13-09)
3-Point FG Att.....	6	BROWN, Devon vs Winthrop (01-09-10)
	6	BROWN, Devon at Virginia (12-29-09)
	6	WASHINGTON, LaKendra vs Winston-Salem State (11-13-09)
3-Pt FG Pct (min 2 made).....	1.000 (2-2)	MAYS, Amber vs UNC Asheville (01-18-10)
	1.000 (2-2)	ANTIC, Jelena at Gardner-Webb University (01-02-10)
Free Throws Made.....	8	BEECHER, Kylee vs UNC Asheville (01-18-10)
	8	BROWN, Devon at Navy (11-21-09)
Free Throw Att.....	10	BEECHER, Kylee vs UNC Asheville (01-18-10)
	9	BROWN, Devon at Navy (11-21-09)
FT Pct (min 3 made).....	1.000 (6-6)	BROWN, Devon vs Longwood (01-12-10)
	1.000 (4-4)	BROWN, Devon at Gardner-Webb University (01-02-10)
	1.000 (4-4)	DALE, Danika vs Winston-Salem State (11-13-09)
	1.000 (4-4)	BEECHER, Kylee vs Winston-Salem State (11-13-09)
	1.000 (3-3)	BROWN, Devon vs Winthrop (01-09-10)
	1.000 (3-3)	BROWN, Devon at Auburn (12-15-09)
	1.000 (3-3)	WARLEY, Avery at Lafayette (11-28-09)
Rebounds.....	13	BROWN, Devon vs Longwood (01-12-10)
	13	BROWN, Devon vs North Carolina A&T (01-05-10)
	13	BROWN, Devon vs James Madison (12-01-09)
Assists.....	10	MAYS, Amber vs Winthrop (01-09-10)
	8	MAYS, Amber vs Cornell (12-28-09)
Steals.....	5	MORGAN, Dymond vs Presbyterian College (01-16-10)
	5	MAYS, Amber vs Longwood (01-12-10)
	5	BROWN, Devon at Navy (11-21-09)
	5	WASHINGTON, LaKendra vs Winston-Salem State (11-13-09)
Blocked Shots.....	3	WARLEY, Avery vs UNC Asheville (01-18-10)
	2	BROWN, Devon vs Longwood (01-12-10)
	2	BROWN, Devon at Virginia (12-29-09)
	2	DALE, Danika vs James Madison (12-01-09)
	2	BROWN, Devon vs Tulane (11-20-09)
	2	DALE, Danika vs UNC Greensboro (11-17-09)
	2	COY, Carra vs UNC Greensboro (11-17-09)
	2	DALE, Danika vs Winston-Salem State (11-13-09)
Turnovers.....	8	MORGAN, Dymond vs Glenville State (12-05-09)
	7	MAYS, Amber at Virginia (12-29-09)
Fouls.....	5	WARLEY, Avery vs Longwood (01-12-10)
	5	WARLEY, Avery at Gardner-Webb University (01-02-10)

2009-10 Liberty Women's Basketball
 Liberty High/Low Analysis (as of Jan 20, 2010)
 All games

OPPONENT INDIVIDUAL GAME HIGHS

Points.....	22	Jackson, Lauren at Lafayette (11-28-09)
	19	Wright, Monica at Virginia (12-29-09)
	17	Greenleaf, Jordan at Auburn (12-15-09)
	15	ROUNDTREE, Margaret at Gardner-Webb University (01-02-10)
	15	McMunigal, Virginia vs Cornell (12-28-09)
	15	Hislop, Tarik vs James Madison (12-01-09)
Field Goals Made.....	7	Wright, Monica at Virginia (12-29-09)
	6	ROUNDTREE, Margaret at Gardner-Webb University (01-02-10)
	6	Hilliard, Chantel at Auburn (12-15-09)
	6	Jackson, Lauren at Lafayette (11-28-09)
	6	Wright, LaKeisha at Lafayette (11-28-09)
Field Goal Att.....	16	Wright, Monica at Virginia (12-29-09)
	16	Autumn Davis vs Glenville State (12-05-09)
	16	Evans, Dawn vs James Madison (12-01-09)
FG Pct (min 5 made).....	.833 (5-6)	SAMS,Jaleesa vs North Carolina A&T (01-05-10)
	.833 (5-6)	McCall, Telia at Virginia (12-29-09)
3-Point FG Made.....	4	Smalley, Alli at Auburn (12-15-09)
	4	KALJO, Indira vs Tulane (11-20-09)
3-Point FG Att.....	12	KALJO, Indira vs Tulane (11-20-09)
	11	Autumn Davis vs Glenville State (12-05-09)
3-Pt FG Pct (min 2 made).....	.750 (3-4)	Jackson, Lauren at Lafayette (11-28-09)
	.667 (2-3)	THOMPSON, Lindsey vs UNC Asheville (01-18-10)
	.667 (2-3)	HUDSON, Dominique at Gardner-Webb University (01-02-10)
	.667 (2-3)	Hislop, Tarik vs James Madison (12-01-09)
Free Throws Made.....	7	HUDSON, Monique at Gardner-Webb University (01-02-10)
	7	Greenleaf, Jordan at Auburn (12-15-09)
	7	Hislop, Tarik vs James Madison (12-01-09)
	7	Jackson, Lauren at Lafayette (11-28-09)
Free Throw Att.....	9	Hislop, Tarik vs James Madison (12-01-09)
	8	MONTGOMERY, Lindsey vs UNC Asheville (01-18-10)
	8	HUDSON, Monique at Gardner-Webb University (01-02-10)
	8	Greenleaf, Jordan at Auburn (12-15-09)
	8	Jackson, Lauren at Lafayette (11-28-09)
FT Pct (min 3 made).....	1.000 (4-4)	HUDSON, Dominique at Gardner-Webb University (01-02-10)
	.875 (7-8)	HUDSON, Monique at Gardner-Webb University (01-02-10)
	.875 (7-8)	Greenleaf, Jordan at Auburn (12-15-09)
	.875 (7-8)	Jackson, Lauren at Lafayette (11-28-09)
Rebounds.....	9	Consedine, Cassie at Navy (11-21-09)
	8	MONTGOMERY, Lindsey vs UNC Asheville (01-18-10)
Assists.....	9	HUDSON, Dominique at Gardner-Webb University (01-02-10)
	5	MILLS, Amanda vs Presbyterian College (01-16-10)
	5	Crystal Smith vs Longwood (01-12-10)
	5	Wright, Monica at Virginia (12-29-09)
	5	Evans, Dawn vs James Madison (12-01-09)
	5	Myers, Angela at Navy (11-21-09)
	5	BARNES, Roshaunda vs Tulane (11-20-09)
	5	BROWN, Chassity vs Tulane (11-20-09)
Steals.....	10	Wright, Monica at Virginia (12-29-09)
	5	SHEPARD, Kendall vs UNC Asheville (01-18-10)
	5	Kellum, Paulisha at Virginia (12-29-09)
Blocked Shots.....	3	POPE, LaTroya at Gardner-Webb University (01-02-10)
	1	MONTGOMERY, Lindsey vs UNC Asheville (01-18-10)
	1	BROWN, Brittany vs Presbyterian College (01-16-10)
	1	Becky Fernandes vs Longwood (01-12-10)
	1	Brittanni Billups vs Longwood (01-12-10)

	1	Chelsea Coward vs Longwood (01-12-10)
	1	SAMS,Jaleesa vs North Carolina A&T (01-05-10)
	1	SMALLEY,Lamona vs North Carolina A&T (01-05-10)
	1	GORHAM,Nikia vs North Carolina A&T (01-05-10)
	1	McCall, Telia at Virginia (12-29-09)
	1	Egwu, Simone at Virginia (12-29-09)
	1	Hilliard, Chantel at Auburn (12-15-09)
	1	Alverson, Blanche at Auburn (12-15-09)
	1	Carrier, KeKe at Auburn (12-15-09)
	1	Suzi Harvey vs Glenville State (12-05-09)
	1	Shepherd, Kanita vs James Madison (12-01-09)
	1	Glover, Nichelle vs James Madison (12-01-09)
	1	Newman,Nikki vs James Madison (12-01-09)
	1	Serowoky, Alexandra at Lafayette (11-28-09)
	1	Jordan, Samantha at Lafayette (11-28-09)
	1	LINDSEY, Brittany vs Tulane (11-20-09)
	1	BENZIO, Brett vs Tulane (11-20-09)
	1	GIRSTAUTAITE, Agne vs UNC Greensboro (11-17-09)
Turnovers.....	9	Becky Fernandes vs Longwood (01-12-10)
	9	Benson, Lauren vs Cornell (12-28-09)
Fouls.....	5	RILES, Kelli vs UNC Asheville (01-18-10)
	5	Morgan Smith vs Longwood (01-12-10)
	5	POPE, LaTroya at Gardner-Webb University (01-02-10)
	5	HUDSON, Dominique at Gardner-Webb University (01-02-10)
	5	Myers, Angela at Navy (11-21-09)
	5	BROWN, Chassity vs Tulane (11-20-09)
	5	RECTOR,Rene vs Winston-Salem State (11-13-09)

2009-10 Liberty Women's Basketball
 Liberty Team High/Low Analysis (as of Jan 20, 2010)
 All games

Liberty - TEAM GAME HIGHS

POINTS.....	90	at Lafayette (11-28-09)
	86	GLENVILLE STATE (12-05-09)
	82	UNC ASHEVILLE (01-18-10)
	78	LONGWOOD (01-12-10)
	73	PRESBYTERIAN COLLEGE (01-16-10)
FIELD GOALS MADE.....	37	at Lafayette (11-28-09)
	35	GLENVILLE STATE (12-05-09)
FIELD GOAL ATTEMPTS.....	63	UNC ASHEVILLE (01-18-10)
	61	LONGWOOD (01-12-10)
FIELD GOAL PERCENTAGE.....	.644 (29-45)	PRESBYTERIAN COLLEGE (01-16-10)
	.617 (37-60)	at Lafayette (11-28-09)
3 PT FIELD GOALS MADE.....	9	UNC ASHEVILLE (01-18-10)
	5	PRESBYTERIAN COLLEGE (01-16-10)
	5	WINTHROP (01-09-10)
3 PT FG ATTEMPTS.....	17	UNC ASHEVILLE (01-18-10)
	14	WINSTON-SALEM STATE (11-13-09)
3 PT FG PERCENTAGE.....	.667 (4-6)	vs Tulane (11-20-09)
	.529 (9-17)	UNC ASHEVILLE (01-18-10)
FREE THROWS MADE.....	17	LONGWOOD (01-12-10)
	16	GLENVILLE STATE (12-05-09)
FREE THROW ATTEMPTS.....	28	GLENVILLE STATE (12-05-09)
	25	at Gardner-Webb University (01-02-10)
FREE THROW PERCENTAGE.....	.923 (12-13)	at Auburn (12-15-09)
	.800 (8-10)	at Virginia (12-29-09)
REBOUNDS.....	67	GLENVILLE STATE (12-05-09)
	54	LONGWOOD (01-12-10)
ASSISTS.....	25	GLENVILLE STATE (12-05-09)
	22	WINTHROP (01-09-10)
STEALS.....	19	PRESBYTERIAN COLLEGE (01-16-10)
	18	UNC ASHEVILLE (01-18-10)
BLOCKED SHOTS.....	6	UNC ASHEVILLE (01-18-10)
	4	vs Cornell (12-28-09)
	4	UNC GREENSBORO (11-17-09)
	4	WINSTON-SALEM STATE (11-13-09)
TURNOVERS.....	33	GLENVILLE STATE (12-05-09)
	30	at Virginia (12-29-09)
FOULS.....	27	at Gardner-Webb University (01-02-10)
	23	JAMES MADISON (12-01-09)
	23	at Lafayette (11-28-09)

2009-10 Liberty Women's Basketball
 Liberty High/Low Analysis (as of Jan 20, 2010)
 All games

Opponent - GAME HIGHS

POINTS.....	70	at Gardner-Webb University (01-02-10)
	70	at Auburn (12-15-09)
	63	at Virginia (12-29-09)
	60	JAMES MADISON (12-01-09)
	55	LONGWOOD (01-12-10)
	55	at Lafayette (11-28-09)
FIELD GOALS MADE.....	24	at Auburn (12-15-09)
	21	at Virginia (12-29-09)
FIELD GOAL ATTEMPTS.....	78	GLENVILLE STATE (12-05-09)
	54	JAMES MADISON (12-01-09)
FIELD GOAL PERCENTAGE.....	.480 (24-50)	at Auburn (12-15-09)
	.429 (21-49)	at Virginia (12-29-09)
3 PT FIELD GOALS MADE.....	7	LONGWOOD (01-12-10)
	7	GLENVILLE STATE (12-05-09)
	7	vs Tulane (11-20-09)
3 PT FG ATTEMPTS.....	49	GLENVILLE STATE (12-05-09)
	24	UNC GREENSBORO (11-17-09)
3 PT FG PERCENTAGE.....	.600 (3-5)	at Lafayette (11-28-09)
	.417 (5-12)	UNC ASHEVILLE (01-18-10)
FREE THROWS MADE.....	26	at Gardner-Webb University (01-02-10)
	20	at Lafayette (11-28-09)
FREE THROW ATTEMPTS.....	36	at Gardner-Webb University (01-02-10)
	32	JAMES MADISON (12-01-09)
FREE THROW PERCENTAGE.....	.769 (20-26)	at Lafayette (11-28-09)
	.731 (19-26)	at Virginia (12-29-09)
REBOUNDS.....	41	JAMES MADISON (12-01-09)
	35	UNC GREENSBORO (11-17-09)
ASSISTS.....	17	at Gardner-Webb University (01-02-10)
	16	vs Tulane (11-20-09)
STEALS.....	19	at Virginia (12-29-09)
	15	GLENVILLE STATE (12-05-09)
BLOCKED SHOTS.....	3	LONGWOOD (01-12-10)
	3	NORTH CAROLINA A&T (01-05-10)
	3	at Gardner-Webb University (01-02-10)
	3	at Auburn (12-15-09)
	3	JAMES MADISON (12-01-09)
TURNOVERS.....	32	WINSTON-SALEM STATE (11-13-09)
	30	PRESBYTERIAN COLLEGE (01-16-10)
FOULS.....	24	LONGWOOD (01-12-10)
	24	at Gardner-Webb University (01-02-10)
	24	GLENVILLE STATE (12-05-09)

2009-10 Liberty Women's Basketball
 Liberty High/Low Analysis (as of Jan 20, 2010)
 All games

Liberty - GAME LOWS

POINTS.....	50	JAMES MADISON (12-01-09)
	54	at Virginia (12-29-09)
	55	at Navy (11-21-09)
	57	NORTH CAROLINA A&T (01-05-10)
	60	UNC GREENSBORO (11-17-09)
FIELD GOALS MADE.....	18	JAMES MADISON (12-01-09)
	19	at Navy (11-21-09)
FIELD GOAL ATTEMPTS.....	45	PRESBYTERIAN COLLEGE (01-16-10)
	47	vs Tulane (11-20-09)
FIELD GOAL PERCENTAGE.....	.305 (18-59)	JAMES MADISON (12-01-09)
	.389 (21-54)	NORTH CAROLINA A&T (01-05-10)
3 PT FIELD GOALS MADE.....	0	GLENVILLE STATE (12-05-09)
	1	JAMES MADISON (12-01-09)
	1	NORTH CAROLINA A&T (01-05-10)
	1	LONGWOOD (01-12-10)
3 PT FG ATTEMPTS.....	1	GLENVILLE STATE (12-05-09)
	6	vs Tulane (11-20-09)
	6	at Lafayette (11-28-09)
	6	NORTH CAROLINA A&T (01-05-10)
3 PT FG PERCENTAGE.....	.000 (0-1)	GLENVILLE STATE (12-05-09)
	.111 (1-9)	JAMES MADISON (12-01-09)
	.111 (1-9)	LONGWOOD (01-12-10)
FREE THROWS MADE.....	8	at Virginia (12-29-09)
	8	WINTHROP (01-09-10)
FREE THROW ATTEMPTS.....	10	at Virginia (12-29-09)
	11	WINTHROP (01-09-10)
FREE THROW PERCENTAGE.....	.455 (10-22)	UNC GREENSBORO (11-17-09)
	.524 (11-21)	vs Cornell (12-28-09)
REBOUNDS.....	23	at Auburn (12-15-09)
	32	PRESBYTERIAN COLLEGE (01-16-10)
ASSISTS.....	6	JAMES MADISON (12-01-09)
	6	at Auburn (12-15-09)
STEALS.....	6	JAMES MADISON (12-01-09)
	7	at Navy (11-21-09)
BLOCKED SHOTS.....	0	at Navy (11-21-09)
	1	at Lafayette (11-28-09)
	1	at Auburn (12-15-09)
	1	at Gardner-Webb University (01-02-10)
TURNOVERS.....	14	at Lafayette (11-28-09)
	16	at Auburn (12-15-09)
	16	WINTHROP (01-09-10)
FOULS.....	10	PRESBYTERIAN COLLEGE (01-16-10)
	11	UNC ASHEVILLE (01-18-10)

2009-10 Liberty Women's Basketball
 Liberty High/Low Analysis (as of Jan 20, 2010)
 All games

Opponent - GAME LOWS

POINTS.....	26	WINSTON-SALEM STATE (11-13-09)
	27	PRESBYTERIAN COLLEGE (01-16-10)
	38	WINTHROP (01-09-10)
	40	vs Cornell (12-28-09)
	40	UNC ASHEVILLE (01-18-10)
FIELD GOALS MADE.....	10	PRESBYTERIAN COLLEGE (01-16-10)
	11	WINSTON-SALEM STATE (11-13-09)
FIELD GOAL ATTEMPTS.....	36	PRESBYTERIAN COLLEGE (01-16-10)
	39	at Lafayette (11-28-09)
FIELD GOAL PERCENTAGE.....	.192 (15-78)	GLENVILLE STATE (12-05-09)
	.262 (11-42)	WINSTON-SALEM STATE (11-13-09)
3 PT FIELD GOALS MADE.....	1	WINSTON-SALEM STATE (11-13-09)
	1	PRESBYTERIAN COLLEGE (01-16-10)
3 PT FG ATTEMPTS.....	5	at Lafayette (11-28-09)
	7	at Virginia (12-29-09)
3 PT FG PERCENTAGE.....	.056 (1-18)	PRESBYTERIAN COLLEGE (01-16-10)
	.083 (1-12)	WINSTON-SALEM STATE (11-13-09)
FREE THROWS MADE.....	3	WINSTON-SALEM STATE (11-13-09)
	5	vs Tulane (11-20-09)
FREE THROW ATTEMPTS.....	5	WINSTON-SALEM STATE (11-13-09)
	10	vs Tulane (11-20-09)
	10	PRESBYTERIAN COLLEGE (01-16-10)
FREE THROW PERCENTAGE.....	.421 (8-19)	UNC GREENSBORO (11-17-09)
	.500 (5-10)	vs Tulane (11-20-09)
	.500 (8-16)	NORTH CAROLINA A&T (01-05-10)
REBOUNDS.....	18	PRESBYTERIAN COLLEGE (01-16-10)
	19	LONGWOOD (01-12-10)
ASSISTS.....	5	WINSTON-SALEM STATE (11-13-09)
	7	PRESBYTERIAN COLLEGE (01-16-10)
STEALS.....	2	at Lafayette (11-28-09)
	4	WINSTON-SALEM STATE (11-13-09)
	4	JAMES MADISON (12-01-09)
	4	WINTHROP (01-09-10)
BLOCKED SHOTS.....	0	WINSTON-SALEM STATE (11-13-09)
	0	at Navy (11-21-09)
	0	vs Cornell (12-28-09)
	0	WINTHROP (01-09-10)
TURNOVERS.....	13	at Gardner-Webb University (01-02-10)
	15	JAMES MADISON (12-01-09)
FOULS.....	13	WINSTON-SALEM STATE (11-13-09)
	13	at Auburn (12-15-09)

2009-10 Liberty Women's Basketball
 Liberty Team Game-by-Game (as of Jan 20, 2010)
 All games

TEAM STATISTICS

Opponent	Date	Score	W/L	---TOTAL---		--3-PTRS--		FT-FTA		---REBOUNDS---				PF	A	TO	Blk	Stl	Pts---Avg	
				FG-FGA	Pct	3FG-FGA	Pct	Pct	Pct	Off	Def	Tot	Avg							
WINSTON-SALEM STATE	11-13-09	71-26	W	27-57	.474	4-14	.286	13-17	.765	16	23	39	39.0	15	18	19	4	15	71	71.0
UNC GREENSBORO	11-17-09	60-42	W	24-49	.490	2-9	.222	10-22	.455	13	27	40	39.5	17	10	19	4	14	60	65.5
vs Tulane	11-20-09	63-52	W	24-47	.511	4-6	.667	11-19	.579	15	23	38	39.0	16	10	24	3	11	63	64.7
at Navy	11-21-09	55-43	W	19-48	.396	3-8	.375	14-21	.667	17	23	40	39.2	14	11	18	0	7	55	62.2
at Lafayette	11-28-09	90-55	W	37-60	.617	3-6	.500	13-20	.650	15	18	33	38.0	23	15	14	1	14	90	67.8
JAMES MADISON	12-01-09	50-60	L	18-59	.305	1-9	.111	13-17	.765	14	32	46	39.3	23	6	20	3	6	50	64.8
GLENVILLE STATE	12-05-09	86-45	W	35-57	.614	0-1	.000	16-28	.571	18	49	67	43.3	17	25	33	2	11	86	67.9
at Auburn	12-15-09	64-70	L	25-51	.490	2-7	.286	12-13	.923	6	17	23	40.8	18	6	16	1	8	64	67.4
vs Cornell	12-28-09	70-40	W	28-53	.528	3-11	.273	11-21	.524	16	27	43	41.0	18	16	22	4	12	70	67.7
at Virginia	12-29-09	54-63	L	22-54	.407	2-11	.182	8-10	.800	16	18	34	40.3	20	7	30	3	10	54	66.3
at Gardner-Webb Unive	01-02-10	65-70	L	23-52	.442	4-9	.444	15-25	.600	16	30	46	40.8	27	11	23	1	10	65	66.2
NORTH CAROLINA A&T	01-05-10	57-51	W	21-54	.389	1-6	.167	14-23	.609	19	26	45	41.2	16	13	23	3	11	57	65.4
WINTHROP	01-09-10	67-38	W	27-53	.509	5-13	.385	8-11	.727	12	25	37	40.8	15	22	16	3	14	67	65.5
LONGWOOD	01-12-10	78-55	W	30-61	.492	1-9	.111	17-24	.708	26	28	54	41.8	19	19	28	3	12	78	66.4
PRESBYTERIAN COLLEGE	01-16-10	73-27	W	29-45	.644	5-11	.455	10-17	.588	11	21	32	41.1	10	17	21	2	19	73	66.9
UNC ASHEVILLE	01-18-10	82-40	W	29-63	.460	9-17	.529	15-24	.625	24	25	49	41.6	11	21	18	6	18	82	67.8
Liberty		1085		418-863	.484	49-147	.333	200-312	.641	254	412	666	41.6	279	227	344	43	192	1085	67.8
Opponents		777		261-783	.333	70-283	.247	185-290	.638	163	260	423	26.4	292	180	343	25	136	777	48.6

Games played: 16
 Points/game: 67.8
 FG Pct: 48.4
 3FG Pct: 33.3
 FT Pct: 64.1

Rebounds/game: 41.6
 Assists/game: 14.2
 Turnovers/game: 21.5
 Assist/turnover ratio: 0.7
 Steals/game: 12.0
 Blocks/game: 2.7

2009-10 Liberty Women's Basketball
 Liberty Team Game-by-Game Comparison (as of Jan 20, 2010)
 All games

Opponent	1st	2nd	Score	Mar	Total FG	FG Pct	3-Pointers	3FG Pct	Free Throws	FT Pct	Rebounds	Assist	TOver	Block	Steal	Fouls	
WINSTON-SALEM STATE.....	30/12	41/14	71-26	+45	27-57/11-42	.474/.262	4-14/ 1-12	.286/.083	13-17/ 3-5	.765/.600	39/25	+14	18/5	19/32	4/0	15/4	15/13
UNC GREENSBORO.....	32/21	28/21	60-42	+18	24-49/15-52	.490/.288	2-9 / 4-24	.222/.167	10-22/ 8-19	.455/.421	40/35	+5	10/10	19/21	4/1	14/11	17/21
Tulane.....	32/19	31/33	63-52	+11	24-47/20-48	.511/.417	4-6 / 7-21	.667/.333	11-19/ 5-10	.579/.500	38/22	+16	10/16	24/22	3/2	11/8	16/19
Navy.....	24/32	31/11	55-43	+12	19-48/15-44	.396/.341	3-8 / 4-20	.375/.200	14-21/ 9-15	.667/.600	40/26	+14	11/11	18/17	0/0	7/8	14/19
Lafayette.....	42/28	48/27	90-55	+35	37-60/16-39	.617/.410	3-6 / 3-5	.500/.600	13-20/20-26	.650/.769	33/20	+13	15/8	14/24	1/2	14/2	23/20
JAMES MADISON.....	16/28	34/32	50-60	(10)	18-59/18-54	.305/.333	1-9 / 5-18	.111/.278	13-17/19-32	.765/.594	46/41	+5	6/13	20/15	3/3	6/4	23/15
GLENVILLE STATE.....	39/23	47/22	86-45	+41	35-57/15-78	.614/.192	0-1 / 7-49	.000/.143	16-28/ 8-11	.571/.727	67/29	+38	25/12	33/20	2/1	11/15	17/24
Auburn.....	19/33	45/37	64-70	(6)	25-51/24-50	.490/.480	2-7 / 6-17	.286/.353	12-13/16-23	.923/.696	23/34	(11)	6/14	16/19	1/3	8/6	18/13
Cornell.....	31/14	39/26	70-40	+30	28-53/13-48	.528/.271	3-11/ 4-16	.273/.250	11-21/10-18	.524/.556	43/25	+18	16/9	22/22	4/0	12/6	18/17
Virginia.....	29/33	25/30	54-63	(9)	22-54/21-49	.407/.429	2-11/ 2-7	.182/.286	8-10/19-26	.800/.731	34/26	+8	7/13	30/20	3/2	10/19	20/15
Gardner-Webb University.....	29/29	36/41	65-70	(5)	23-52/19-51	.442/.373	4-9 / 6-16	.444/.375	15-25/26-36	.600/.722	46/27	+19	11/17	23/13	1/3	10/9	27/24
NORTH CAROLINA A&T.....	33/27	24/24	57-51	+6	21-54/19-48	.389/.396	1-6 / 5-17	.167/.294	14-23/ 8-16	.609/.500	45/28	+17	13/13	23/19	3/3	11/9	16/18
WINTHROP.....	24/16	43/22	67-38	+29	27-53/13-41	.509/.317	5-13/ 3-9	.385/.333	8-11/ 9-13	.727/.692	37/21	+16	22/10	16/20	3/0	14/4	15/15
LONGWOOD.....	38/25	40/30	78-55	+23	30-61/18-52	.492/.346	1-9 / 7-22	.111/.318	17-24/12-18	.708/.667	54/19	+35	19/13	28/24	3/3	12/12	19/24
PRESBYTERIAN COLLEGE.....	36/10	37/17	73-27	+46	29-45/10-36	.644/.278	5-11/ 1-18	.455/.056	10-17/ 6-10	.588/.600	32/18	+14	17/7	21/30	2/1	19/10	10/16
UNC ASHEVILLE.....	41/17	41/23	82-40	+42	29-63/14-51	.460/.275	9-17/ 5-12	.529/.417	15-24/ 7-12	.625/.583	49/27	+22	21/9	18/25	6/1	18/9	11/19

Note: Game totals are displayed in the format TEAM/OPPONENT for each category

2009-10 Liberty Women's Basketball
 Liberty Extended Season Box Score (as of Jan 20, 2010)
 All games

RECORD:		OVERALL	HOME	AWAY	NEUTRAL
ALL GAMES.....		(12-4)	(8-1)	(2-3)	(2-0)
CONFERENCE.....		(3-1)	(3-0)	(0-1)	(0-0)
NON-CONFERENCE.....		(9-3)	(5-1)	(2-2)	(2-0)

# Player	GP-GS	Min--Avg	-----TOTAL-----			-----3-PTS-----			-----REBOUNDS-----			PF	FO	A	APG	TO	TOPG	A/TO	Blk	BPG	Stl	SPG	Pts	Avg			
			FG-FGA	Pct	3FG-FGA	Pct	3FG/G	FT-FTA	Pct	Off	Def														Tot	Avg	
40 BROWN, Devon.....	16-16	436 27.3	99-209	.474	24-63	.381	1.50	47-63	.746	41	99	140	8.8	28	0	25	1.56	41	2.56	0.61	11	0.69	28	1.75	269	16.8	
21 MAYS, Amber.....	16-16	432 27.0	58-102	.569	4-5	.800	0.25	21-38	.553	7	19	26	1.6	37	1	75	4.69	50	3.13	1.50	0	0.00	45	2.81	141	8.8	
23 WARLEY, Avery.....	16-16	421 26.3	58-107	.542	0-0	.000	0.00	22-48	.458	55	62	117	7.3	45	3	9	0.56	50	3.13	0.18	7	0.44	13	0.81	138	8.6	
11 ANTTIC, Jelena.....	13-8	308 23.7	45-84	.536	5-10	.500	0.38	15-23	.652	34	35	69	5.3	24	1	20	1.54	34	2.62	0.59	2	0.15	12	0.92	110	8.5	
15 BEECHER, Kylee.....	16-8	393 24.6	37-73	.507	0-5	.000	0.00	34-48	.708	22	32	54	3.4	26	0	14	0.88	29	1.81	0.48	5	0.31	11	0.69	108	6.8	
32 McLEOD, Rachel.....	16-16	355 22.2	33-80	.413	4-12	.333	0.25	23-30	.767	10	26	36	2.3	20	0	27	1.69	25	1.56	1.08	1	0.06	16	1.00	93	5.8	
01 WASHINGTON, Lakendr	16-0	239 14.9	35-85	.412	5-26	.192	0.31	9-18	.500	12	21	33	2.1	29	1	10	0.63	32	2.00	0.31	2	0.13	26	1.63	84	5.3	
25 MORGAN, Dymond.....	16-0	255 15.9	26-53	.491	3-8	.375	0.19	14-19	.737	5	27	32	2.0	30	0	27	1.69	36	2.25	0.75	0	0.00	26	1.63	69	4.3	
12 DALE, Danika.....	16-0	226 14.1	21-54	.389	4-18	.222	0.25	11-17	.647	18	44	62	3.9	18	0	20	1.25	27	1.69	0.74	7	0.44	14	0.88	57	3.6	
54 COY, Garra.....	12-0	135 11.3	6-16	.375	0-0	.000	0.00	4-8	.500	8	13	21	1.8	22	0	0	0.00	11	0.92	0.00	8	0.67	1	0.08	16	1.3	
TEAM.....										42	34	76	4.8	0													

Total.....	16	3200	418-863	.484	49-147	.333	3.06	200-312	.641	254	412	666	41.6	279	6	227	14.19	344	21.50	0.66	43	2.69	192	12.00	1085	67.8
Opponents.....	16	3200	261-783	.333	70-283	.247	4.38	185-290	.638	163	260	423	26.4	292	-	180	11.25	343	21.44	0.52	25	1.56	136	8.50	777	48.6

SCORE BY PERIODS:		1st	2nd	Total	DEADBALL	REBOUNDS:	OFF	DEF	TOTAL
Liberty.....		495	590	1085			43	1	44
Opponents.....		367	410	777			51	0	51

2009-10 Liberty Women's Basketball
 Liberty Combined Team Statistics (as of Jan 20, 2010)
 All games

RECORD:	OVERALL	HOME	AWAY	NEUTRAL
ALL GAMES.....	(12-4)	(8-1)	(2-3)	(2-0)
CONFERENCE.....	(3-1)	(3-0)	(0-1)	(0-0)
NON-CONFERENCE.....	(9-3)	(5-1)	(2-2)	(2-0)

## Player	GP-GS	Min--Avg	---TOTAL---		---3-PTS---		FT-FTA	Pct	---REBOUNDS---				PF	FO	A	TO	Blk	Stl	Pts	Avg
			FG-FGA	Pct	3FG-FGA	Pct			Off	Def	Tot	Avg								
40 BROWN, Devon.....	16-16	436 27.3	99-209	.474	24-63	.381	47-63	.746	41	99	140	8.8	28	0	25	41	11	28	269	16.8
21 MAYS, Amber.....	16-16	432 27.0	58-102	.569	4-5	.800	21-38	.553	7	19	26	1.6	37	1	75	50	0	45	141	8.8
23 WARLEY, Avery.....	16-16	421 26.3	58-107	.542	0-0	.000	22-48	.458	55	62	117	7.3	45	3	9	50	7	13	138	8.6
11 ANTIC, Jelena.....	13-8	308 23.7	45-84	.536	5-10	.500	15-23	.652	34	35	69	5.3	24	1	20	34	2	12	110	8.5
15 BEECHER, Kylee.....	16-8	393 24.6	37-73	.507	0-5	.000	34-48	.708	22	32	54	3.4	26	0	14	29	5	11	108	6.8
32 McLEOD, Rachel.....	16-16	355 22.2	33-80	.413	4-12	.333	23-30	.767	10	26	36	2.3	20	0	27	25	1	16	93	5.8
01 WASHINGTON, LaKendr	16-0	239 14.9	35-85	.412	5-26	.192	9-18	.500	12	21	33	2.1	29	1	10	32	2	26	84	5.3
25 MORGAN, Dymond.....	16-0	255 15.9	26-53	.491	3-8	.375	14-19	.737	5	27	32	2.0	30	0	27	36	0	26	69	4.3
12 DALE, Danika.....	16-0	226 14.1	21-54	.389	4-18	.222	11-17	.647	18	44	62	3.9	18	0	20	27	7	14	57	3.6
54 COY, Carra.....	12-0	135 11.3	6-16	.375	0-0	.000	4-8	.500	8	13	21	1.8	22	0	0	11	8	1	16	1.3
TEAM.....										42	34	76	4.8	0		9				

Total.....	16	3200	418-863	.484	49-147	.333	200-312	.641	254	412	666	41.6	279	6	227	344	43	192	1085	67.8
Opponents.....	16	3200	261-783	.333	70-283	.247	185-290	.638	163	260	423	26.4	292	-	180	343	25	136	777	48.6

TEAM STATISTICS	LIBERTY	OPP	DATE	OPPONENT	W/L	SCORE	ATTEND

SCORING.....	1085	777	11-13-09	WINSTON-SALEM STATE	W	71-26	1192
Points per game.....	67.8	48.6	11-17-09	UNC GREENSBORO	W	60-42	786
Scoring margin.....	+19.3	-	%11-20-09	vs Tulane	W	63-52	207
FIELD GOALS-ATT.....	418-863	261-783	%11-21-09	at Navy	W	55-43	852
Field goal pct.....	.484	.333	11-28-09	at Lafayette	W	90-55	324
3 POINT FG-ATT.....	49-147	70-283	12-01-09	JAMES MADISON	L	50-60	1209
3-point FG pct.....	.333	.247	12-05-09	GLENVILLE STATE	W	86-45	611
3-pt FG made per game.	3.1	4.4	12-15-09	at Auburn	L	64-70	1566
FREE THROWS-ATT.....	200-312	185-290	#12-28-09	vs Cornell	W	70-40	452
Free throw pct.....	.641	.638	#12-29-09	at Virginia	L	54-63	3096
F-Throws made per game	12.5	11.6	*01-02-10	at Gardner-Webb University	L	65-70	249
REBOUNDS.....	666	423	01-05-10	NORTH CAROLINA A&T	W	57-51	365
Rebounds per game....	41.6	26.4	*01-09-10	WINTHROP	W	67-38	557
Rebounding margin.....	+15.2	-	01-12-10	LONGWOOD	W	78-55	460
ASSISTS.....	227	180	*01-16-10	PRESBYTERIAN COLLEGE	W	73-27	688
Assists per game.....	14.2	11.3	*01-18-10	UNC ASHEVILLE	W	82-40	826
TURNOVERS.....	344	343	% = Navy Classic (Annapolis, Md.)				
Turnovers per game....	21.5	21.4	# = Marriott Cavalier Classic (Charlottesville, Va.)				
Turnover margin.....	-0.1	-	* = Big South Conference game				
Assist/turnover ratio.	0.7	0.5					
STEALS.....	192	136					
Steals per game.....	12.0	8.5					
BLOCKS.....	43	25					
Blocks per game.....	2.7	1.6					
ATTENDANCE.....	6694	6746					
Home games-Avg/Game...	9-744	5-1217					
Neutral site-Avg/Game.	-	2-330					

SCORE BY PERIODS:	1st	2nd	Total

Liberty.....	495	590	- 1085
Opponents.....	367	410	- 777