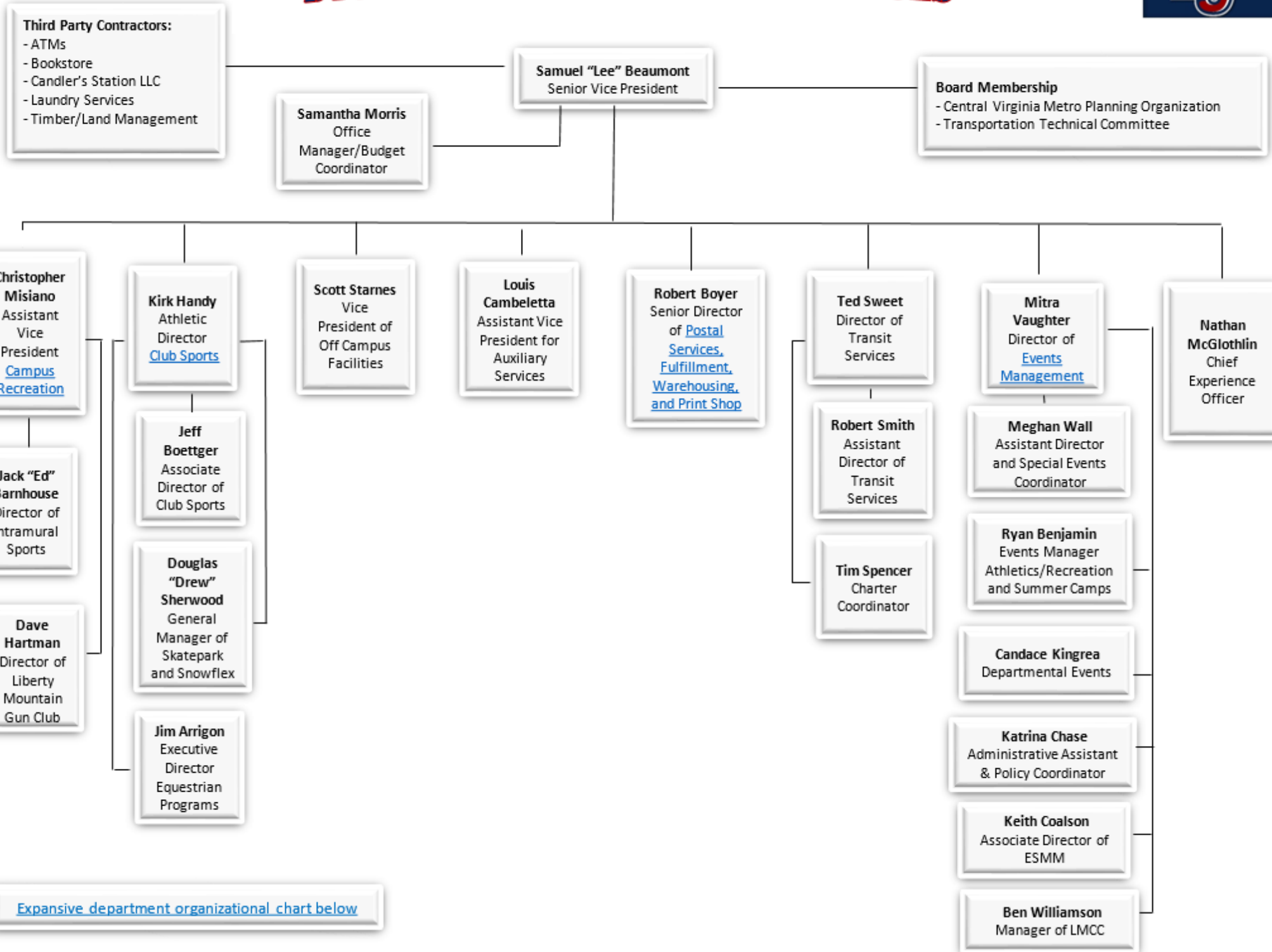
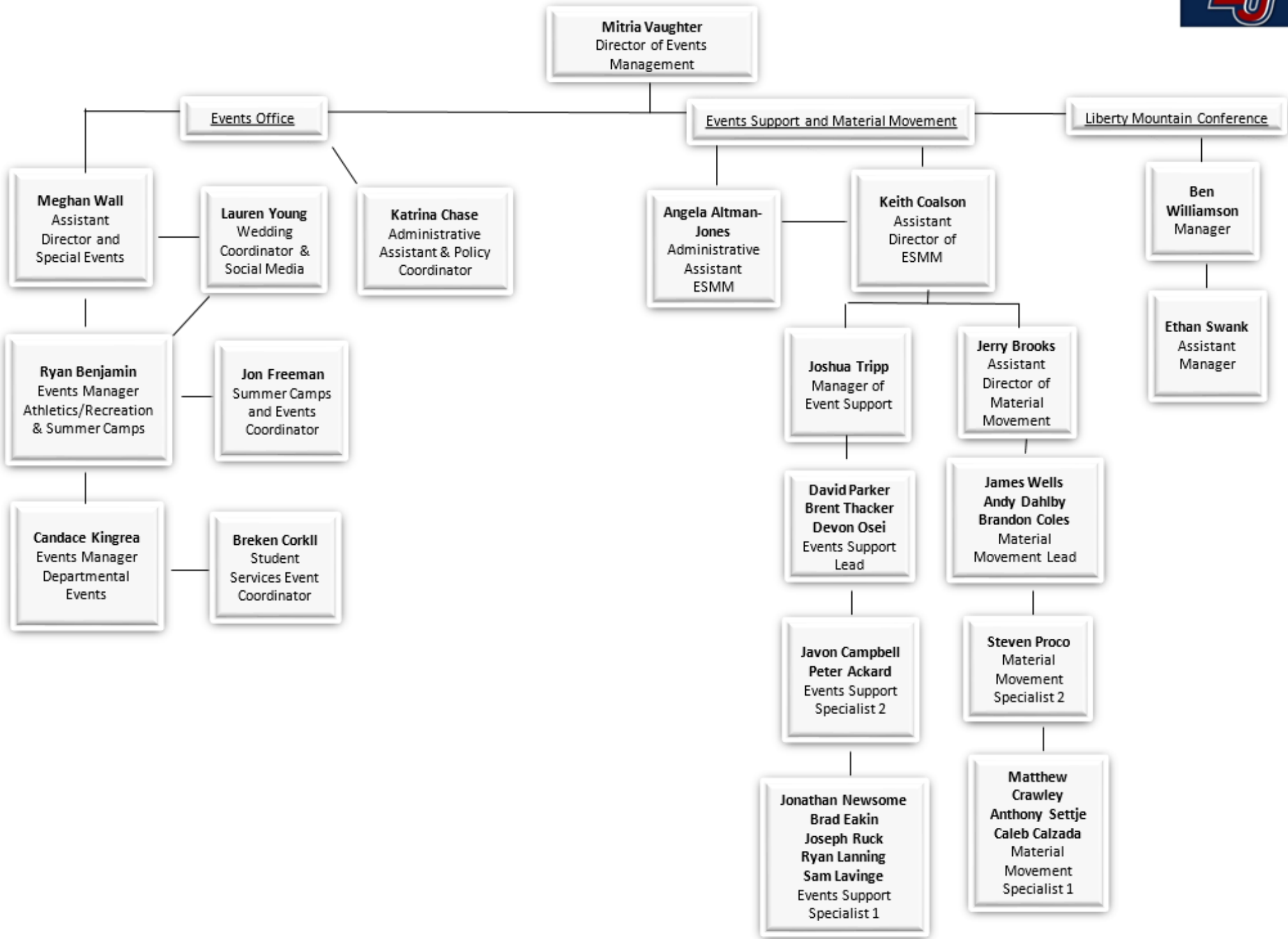


# DIVISION OF AUXILIARY SERVICES

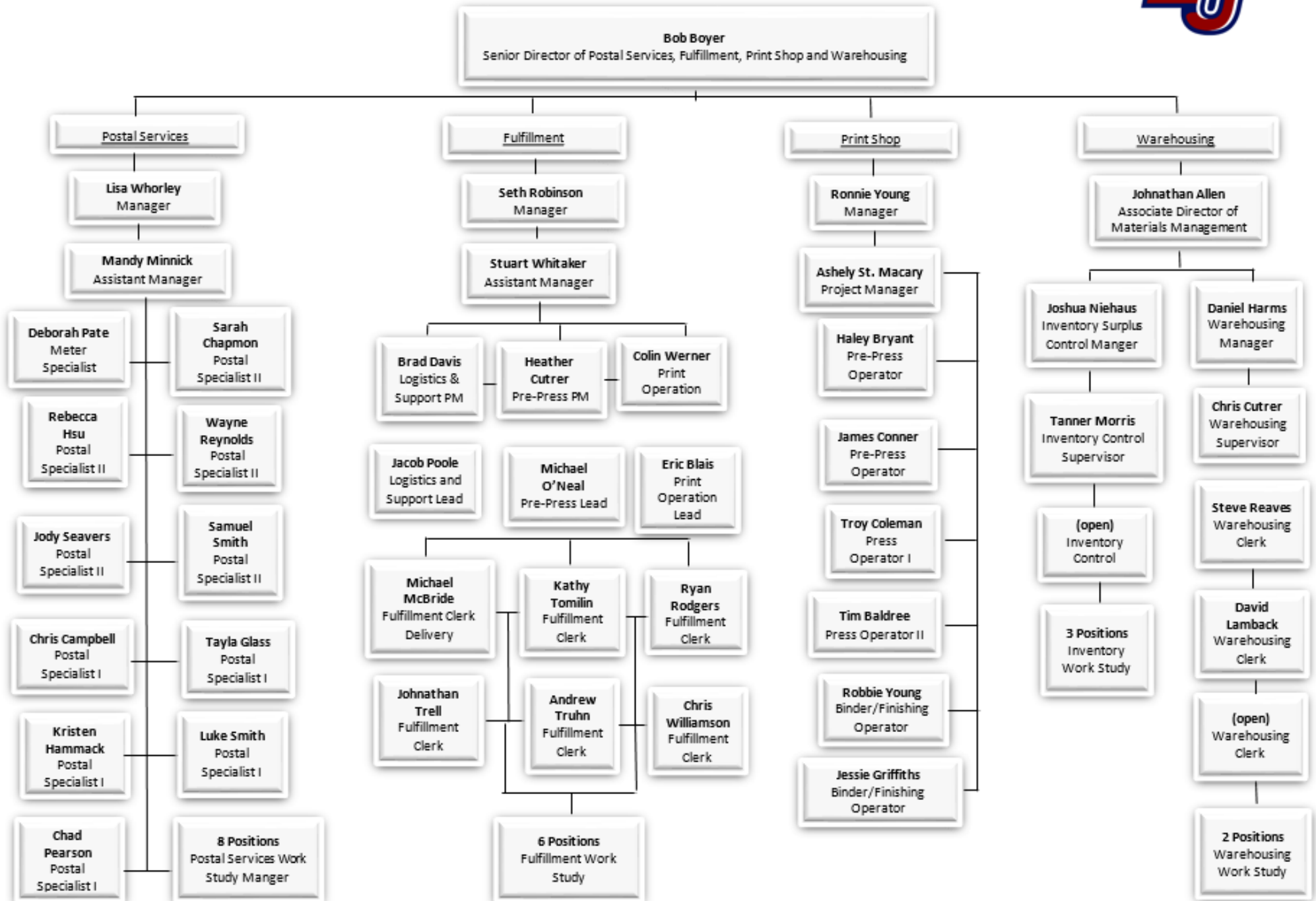


[Expansive department organizational chart below](#)

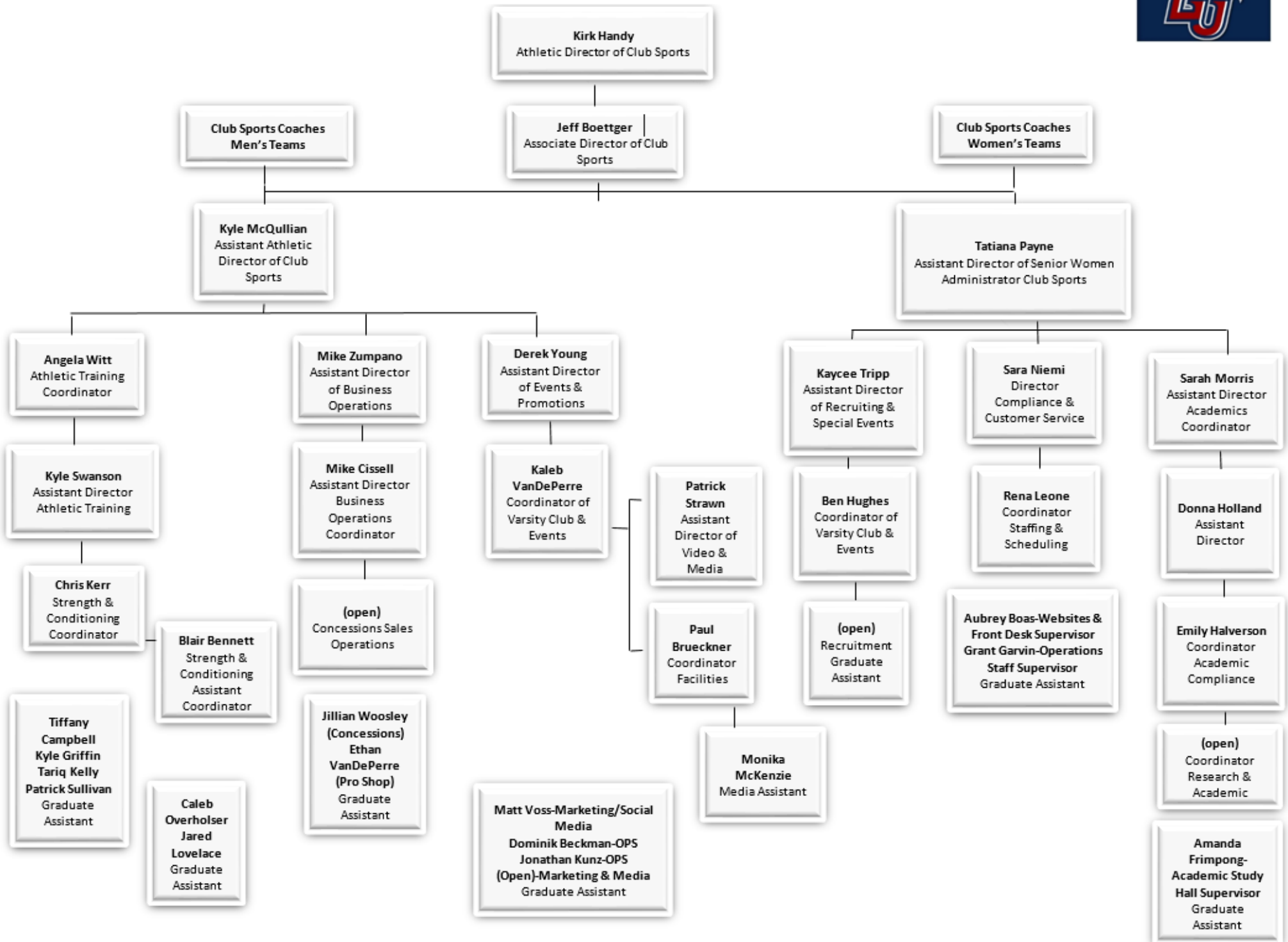
# DIVISION OF EVENTS MANAGEMENT



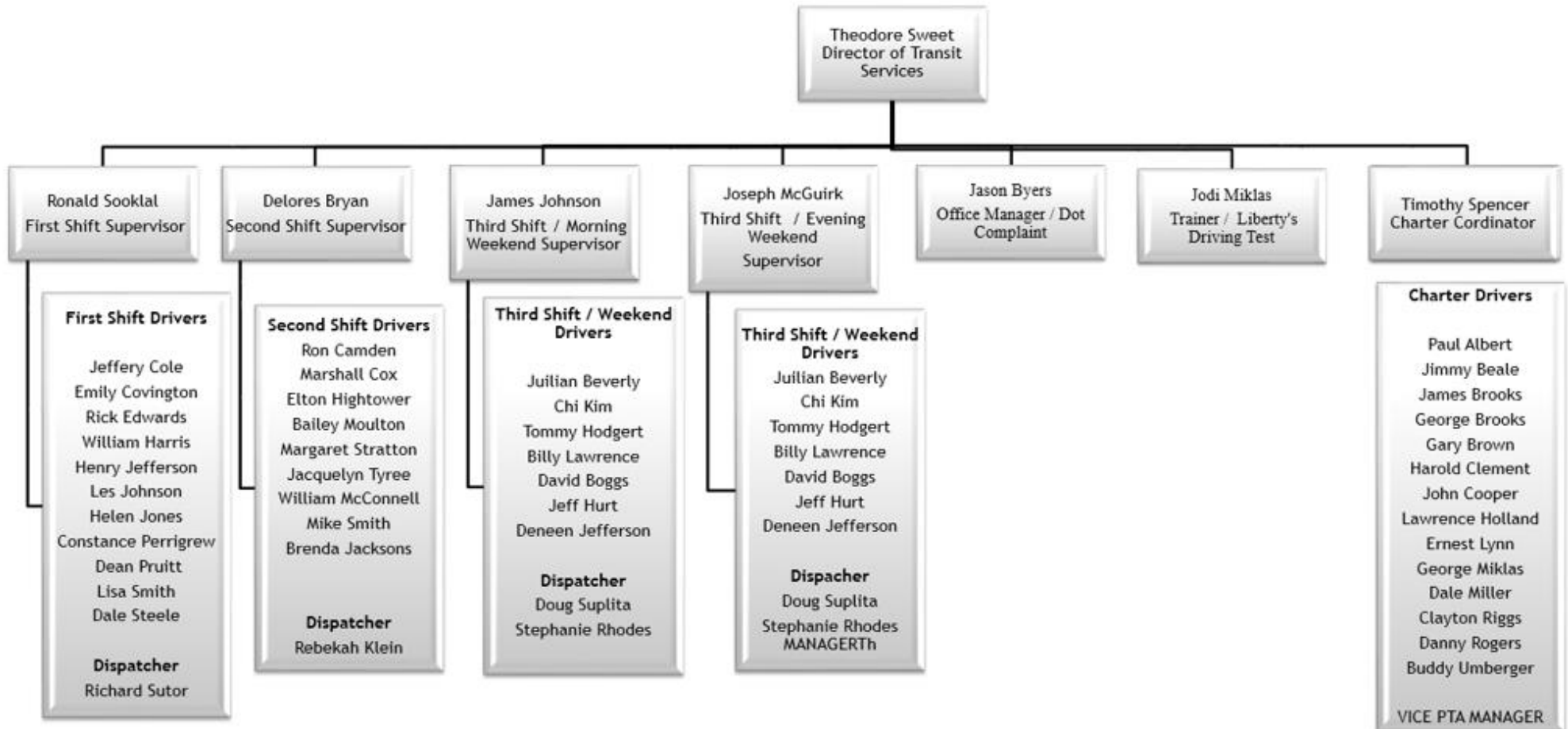
# DIVISION OF POSTAL SERVICES, FULFILLMENT, PRINT SHOP, AND WAREHOUSING



# DIVISION OF CLUB SPORTS



# DIVISION OF TRANSIT SERVICES





**Chris Misiano**

*Vice President of Campus Recreation*

**Linda Galvez**  
*Administrative Assistant*

**Outdoor Rec**

**Mike Ellsworth**  
*Director*

**Tim Lewis**  
*Assistant Director*

**Chris Marvel**  
*Assistant Director*

**Student Activities**

**Stephanie Ward**  
*Director*

**Erin Diaz**  
*Assistant Director*

**Kari Moye**  
*Assistant Director*

**Drew Snavelly**  
*Events Coord.*

**Intramural Sports**

**Ed Barnhouse**  
*Director*

**Steve Chamberlin**  
*Associate Director*

**Marshall Evans**  
*Coordinator*

**Recreation Centers**

**Jamie Swyers**  
*Director*

**Heather Gaunt**  
*Associate Director of Fitness and Programming*

**Javaz Williams**  
*Fitness Coord.*

**Rylie Culkin**  
*Associate Director of Communications and Marketing*

**Jonathan Husker**  
*Communications Coord.*

**Sean Sealy**  
*Associate Director of Facilities*

**Spencer Mather**  
*Facilities Coord.*

**Sam Seaborn**  
*Associate Director of Operations*

**Jake Weatherholtz**  
*Assistant Director of Operations*

**Kevin Fortier**  
*Athletic Training Coord.*

**Elliot Gaunt**  
*Rock Wall Coord.*

**Nick Belotte**  
*Associate Director of Aquatics and Satellite Facilities*

**Hannah Hornsby**  
*Aquatics Coord.*